

Board ~~of~~ing School Zine



News

Comps

Awards

Go Skate Day



Annual Report 2024

Features

Trips

FS BS

Timeline



The Boarding School

The YOU Foundation was Est in 2005 to benefit young people in Staple Hill through youth clubs, activities, workshops and most recently our Boarding School skatepark Project. The Boarding School has made an impressive impact since it started in 2021. With 8 sessions a week available its not just skateboarding on offer, we are a youth centre first and foremost! So there's always extra activities to enagage, enrich and inspire.

The Team

Our Trustees:

Mike -The chair, keeps us organised
Roger - Treasurer, Keeps an eye on finance
Adele - Health & Safety, Tricky with us lot
Maggie - Line manager, Secretary
Debbie - Runs a youth charity in North Bristol
Laurie - Has years of experience in Youth Work

Our Staff:

Rob Sharp - Youth and Community work manager
Jill Nock - Youth worker, Mondays
Ben Vizor - Youth worker and Skate coach Mondays and Wednesdays
George Davies - Youth worker and Skate coach Sundays
Sophie - Volunteer youth worker, Sunday
Zoe - Admin worker



Contents

Stats and figures	Pg1
Trips	Pg2
Go Skate day recap	Pg4
Lingo Learn your FS from your BS	Pg5
Go Kart Derby	Pg6
Skate Chairs	
Fingerboard Awards night	Pg7

Stats

We've seen sessions really increase in popularity over the last year. We have delivered more sessions, with more hours of face-to-face youth work than any of our previous 19 years. Young people tell us they want more opportunities to visit us and more sessions to get involved with. Thankfully due to some extra funding last year we were able to fulfil that demand and start opening on Sundays. This extra time has enabled us to be more flexible too offering a wider variety of sessions to different user groups and help keep our offer sustainable.

In 2024 we increased the number of sessions on offer by 40% and increased young peoples' attendance by 10%.










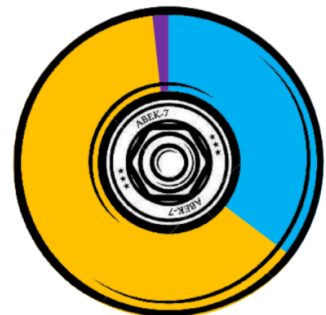
Skateboarding can be a very male dominated activity, so we pay close attention to our demographics to make sure we are as responsive as possible to the needs of young people. A 65/35 gender split can be normal for a youth centre, but this will be an aim for next year to promote our girls only session more. Unfortunately it is in our Girl's only skateboarding session where we've seen a drop in attendance. We feel this is a normal waxing/waning, but have a strategy in place to promote the sessions and encourage any girls that want to start skating.

Predominantly recorded for funders, this data helps show that the majority of people we work with are aged 13-19. Our Jnr sessions make an allowance down to 11 years to allow anyone in Secondary education to attend, and our Snr session can make an allowance over 19 for anyone that has additional needs.

With our new Sunday sessions, we've been able to introduce a time open to the public. This means anyone outside our normal age range can attend and get to skate the park. This has meant families can skate together, and adults just starting to skate can benefit from our great little park.

This is a breakdown of our attendance by session, going clockwise from the top

-  Monday Girls only 269
-  Monday 11-15s 518
-  Monday 15+ 237
-  Weds mixed 441
-  Sunday Youth 355
-  Sunday Public 293
-  Women's Beginners 110



Trips

We love trips, so we try and organise as many as we can through the year. Often young people through the Skate Committee decide where and when, and plan out the budget.

The first of the trips featured here was part of a joint project working with two other youth centres FACE at Kingswood and CYN at Hanham.

By working together young people get great opportunities without it costing too much. They also get to meet and chat with new young people and maybe swap ideas for what works at their youth club.

The venue was the West Country Waterpark, where for the summer they had an amazing inflatable assault course.

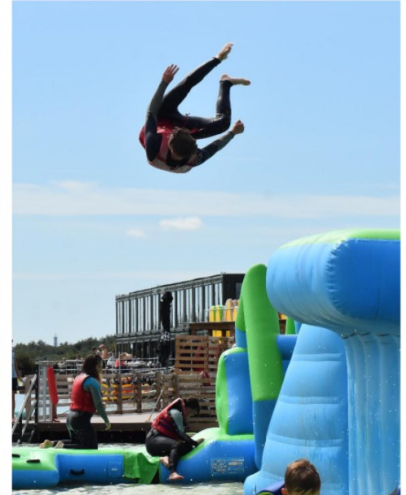
Ruby was very impressive on the day, having taught herself to swim THAT WEEK, just so she could attend. Then having to face: open water (couldn't see the bottom), Slides, Jumps the lot!

When we heard Portishead was throwing a Jam to celebrate their new skatepark opening, we had to go and check it out.

The atmosphere was great, banging sound system, some great BBQ, and comps for all ages running through the day.

I was so impressed that so many skaters on the trip entered in the comps and getting so close to the podium. Some had only been skating a few months and the crowd was BIG!

To encourage a few to enter, Rob signed up and even bagged 3rd place in the over 20s comp skating on our little Truckie!

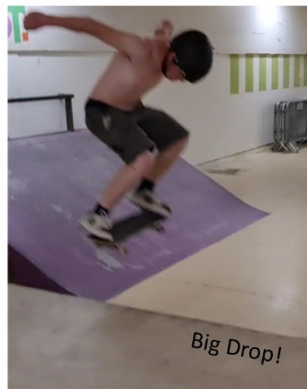
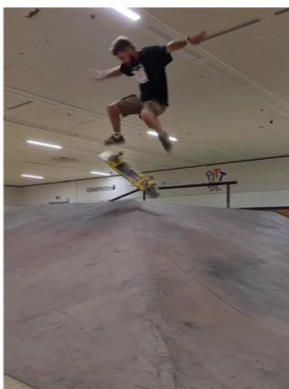
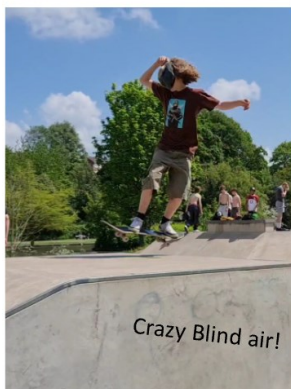


A big trip of the summer was the Skate Committee's visit to Pitt St Skatepark. Pitt St have taken over an abandoned Sainsbury's store in the heart of Portsmouth and created an amazing space for all wheeled sports. With a glassy smooth floor, big wide open spaces, and a fantastic mix of street obstacles, the boarding school skaters were desperate to have a skate somewhere they'd be kicked out of for skating normally.

With it being a 5 hour round trip we decided to stop off at Warminster on the way, for a stretch of the legs and some lunch. The sun was shining, the birds were singing, what more could you ask for?

We arrived in Portsmouth just as the heat became a bit oppressive, so the shelter of an old Sainsbury's roof was welcome! Also the heat had seemed to put any other skaters off, so we had the place to ourselves pretty much!

Dinner in the Pitt St in-house cafe and then a long drive back to Brizzle with tales of tricks and slams from the day.



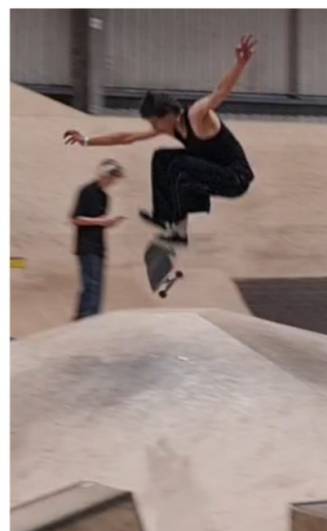
The Skate Committee also planned a residential (two night stay) at the always amazing Camp Hillcrest! We had many planning sessions, looking at all the nearby amazing parks we wanted to visit, and this year with 2 nights we weren't going to be limited... that was until it rained... all day Saturday.

So we got set for the day and headed to Rampworld. The foam pit provided some big thrills. but also some big spills. Just as well they made us wear helmets hey!

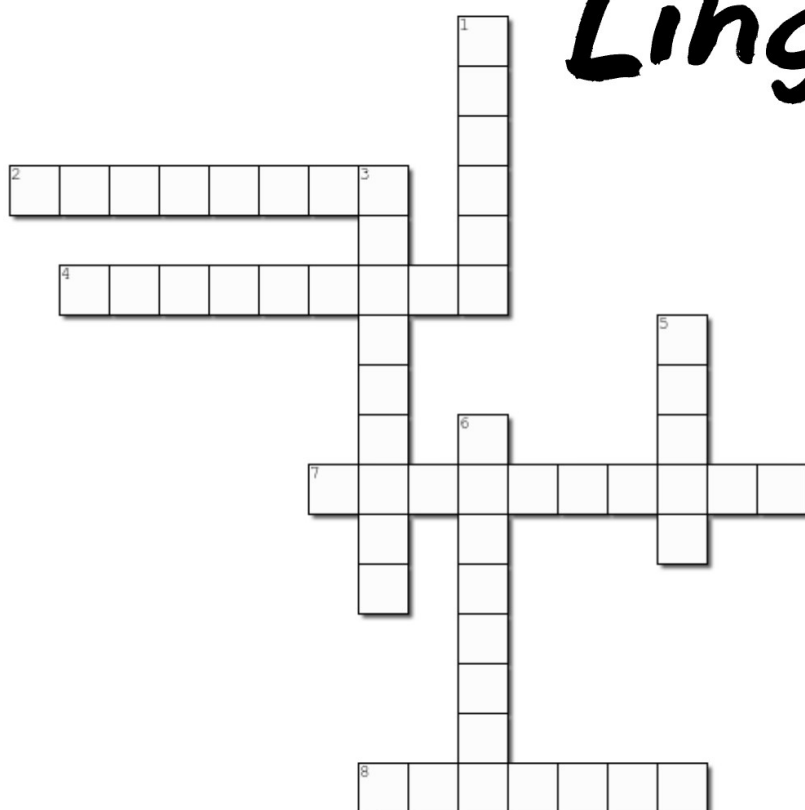
Next stop was Spit & Sawdust after lunch. The group skated till there was nothing left in the tank and we headed back to camp. Thankfully being tired out meant there weren't as many hijynx on night two and there was a bit more sleep.

Day three saw more dodging of showers at Monmouth skatepark. We had to run to the minibus more than once!

It seemed like everyone had fun, and we can't wait for the next one!



Lingo



Across

- 2. Fillet piece / Footplant grab
- 4. Connecting wheels and waiting / Stationary grind
- 7. Even chances / Grinding both trucks
- 8. A normal amount or recurring / Left foot forward

Down

- 1. Instructions or done by hand / Wheelie
- 3. Expired seafood / Back hand heel side grab
- 5. Disney Dog / Right foot forward
- 6. Smelly insect / Back hand toe side grab through the legs

Trick Bingo

Beginner

Push	Stop	Board Flip
Tic Tac	Kick Turn	Revert
Tail Touch	Nose Touch	Manual

Advanced

Drop In	Ollie	Boneless
Rock Fakie	Shuv it	Axel Stall
Fakie Rock	Drop off curb	Slash Grind

Inspired by @poserskateproject and GoodPush.org

Go Skate Day

21st June 2023



Go Skate day is an internationally celebrated day in the northern hemisphere, and takes place on the longest day (the most hours to skate) which is usually late June. In 2023 we celebrated the day by hosting a BBQ at Warmley Skatepark and running some games of S.K.A.T.E with prizes! We ran two heats for beginners and advanced but everyone left with something. It was also a great way to introduce George to the team!



Lingo Fs Vs BS

Frontside and Backside refers to which way round you're turning or spinning on your board. It seems simple, but there are some weird rules and can often confuse new skaters when we're describing tricks. Here we're going to try and get it clear as mud:

Goofy Right foot forward

Regular Left foot forward

The rules for FS : BS mainly come from Vert skating and if the coping is in front of you or behind you but we'll break it down, lets go!

Spins:

So as mentioned before, think about the spin on vert. For the first part of the spin is the coping in front or behind?

Many also like to say "if my back is on the outside of the turn, it's backside" which works.

For Goofy skaters fs= clockwise
bs= anti-clockwise

Rails, Ledges, and Lips:

A simple way to think about the rule here is if the ledge or rail is in front as you pop or behind. if it's in front, its FS! If it's behind it's BS!

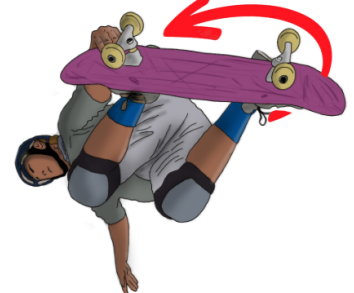
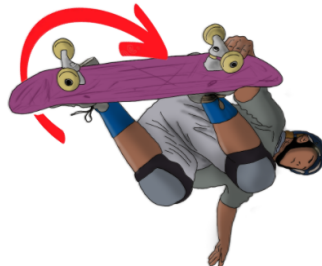
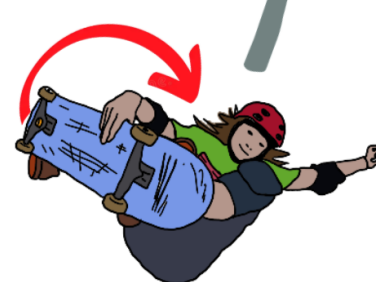
Newer skaters can get confused here as we spin FS 90 degrees to get into a BS boardslide. I know right?! But think back to that first thing, most of the rules came from vert so it might help to think about the rail as a lip rather than spin direction.

Nollie & Fakie:

Here's where things can get pretty confusing even for long time skaters. Fakie FS and BS are exactly as they would be if you were rolling forward, that's fine they look the same anyway.

Nollie FS and BS are as they would be IF you popped the tail. This means they look different and where most ppl get caught out. A Nollie BS 180, looks like we should call it FS, The front of our body is on the outside of the rotation, and the feeling is similar too. Think back to if the trick was on vert though and it makes sense that it's BS, and the anti-clockwise or clockwise direction still works too.

Lots say "Nollie is opposite." which works from an aesthetic pov.



Derby Kart Race

On September 9th the good folks at The Bean Tree cafe in Page Park held the first community Derby Kart race!

Teams had to push their home-made karts in teams of three (1 driver, 2 pushers) round a set course in a shoot out competition. Our young volunteer Nick led the build crew over several months to create our skateboard inspired kart! We learnt lots of new skills and of course, we had to have a go at actually skating it too!

On the day the sun was sweltering, the races were exhausting, and many karts were coming apart at the bolts. We weren't the fastest but very happy with how solid Nick made the kart and to have got involved with this great community event.



Skateboard Chairs

Our youth committee gave us a tall order for lots of trips this year which needed their help to raise funds for. Their answer was to make Skate Chairs!

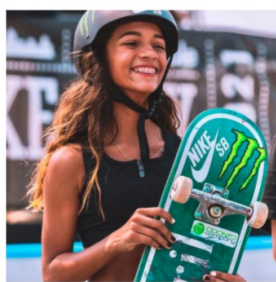
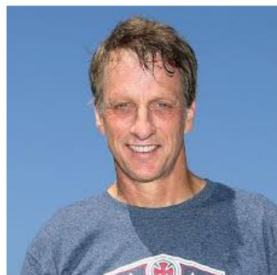
Re-cycling old unwanted skateboards into this years must have home decor, volunteers stripped, modified and created this pair of rad chairs.

They then went up on Facebook and sold for £70! which paid for a minibus to Portsmouth!



Famous Faces

Can you name all of these famous skaters



Awards and Fingerboards



Throughout the year, as young people work on their targets or learn new skills at the youth club, our staff are helping them record and log all of this in their accreditation folders.

Once a young person has completed ten hours of work in their folder, they can complete that section of the South Glos Youth Award.

At the end of the year we invite all young people who've completed a section to attend the South Glos Awards night, where they can collect their awards and celebrate their achievements and the achievements of so many other young people from across the South Glos area. This year our volunteers worked hard on a new fingerboard park which would become our groups table centrepiece on the night. There's always lots of activities on the night too, a huge buffet, live music and performances!

This year we had 7 young people attend the night but 53 young people complete either a section of the SouthGlos Award, DofE award, or SBGB Cruiser award!



2023



Volunteers amking skate chairs to raise money for trips



Trip to Pitt St Portsmouth



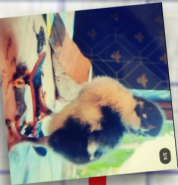
New obstacles and Truckie!



Go Skate Day event at Warmley



Residential!



Winner of Radical pet comp announced

April



Go Kart race day



Trips to Portishead opening and waterparks in August



October

In October we helped run Cabot LV 7 skateparks, and held our annual halloween jam!



Dec

Christmas treasure hunt on our last session



2024

BBA skate club starts



We announced the winners of the design a deck comp and surprise all our finalists with their boards!



March

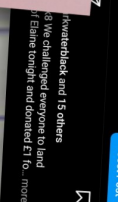
Volunteers skate 11 miles to raise money for Move The Mind charity in Memory of Alfie

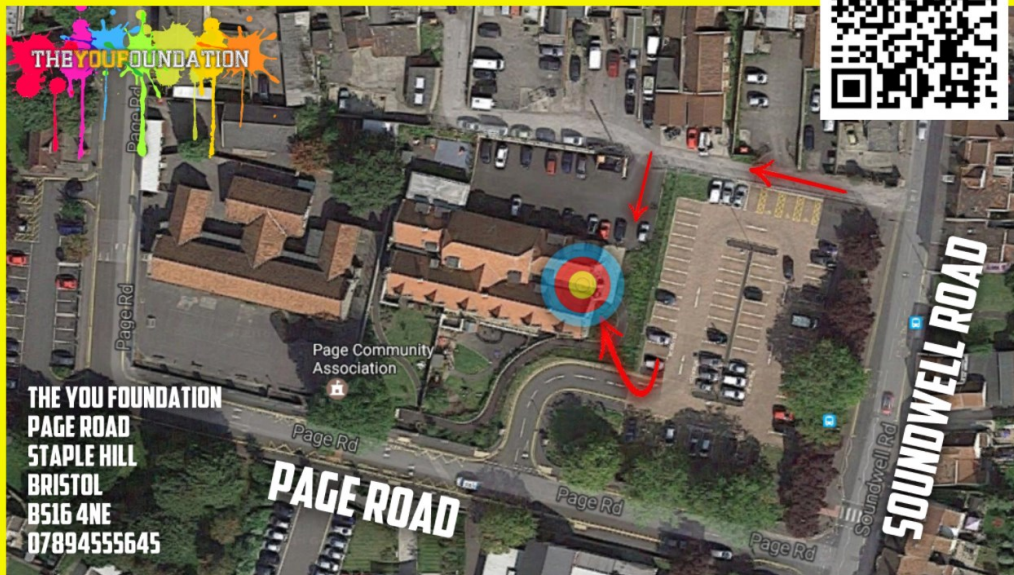


June

Shuv it to Cancer day raised £40!

August





www.TheYouFoundation.org

***Our website is the best place to book sessions,
make enquiries, and find out about all the
projects happening weekly.***

***Check out our Calendar for events
Our shop for members only access bargains
Our Blog for the latest news and updates***



/staplehillyouth -

For all things Charity based



/theboardingschoolsk8 -

For all things Boarding School



01179574634



07894555645





Section A

Independent Examiner's Report

Report to the trustees/
members of

THE YOU FOUNDATION

On accounts for the year
ended

31 MARCH 2024

Charity no
(if any)

1162831

Set out on pages

I report to the trustees on my examination of the accounts of the above charity ("the Trust") for the year ended

Responsibilities and
basis of report

As the charity trustees of the Trust, you are responsible for the preparation of the accounts in accordance with the requirements of the Charities Act 2011 ("the Act").

Independent
examiner's statement

I report in respect of my examination of the Trust's accounts carried out under section 145 of the 2011 Act and in carrying out my examination, I have followed the applicable Directions given by the Charity Commission under section 145(5)(b) of the Act.

I have completed my examination. I confirm that no material matters have come to my attention (~~other than that disclosed below~~*) in connection with the examination which gives me cause to believe that in, any material respect:

- accounting records were not kept in accordance with section 130 of the Act or
- the accounts do not accord with the accounting records

I have no concerns and have come across no other matters in connection with the examination to which attention should be drawn in order to enable a proper understanding of the accounts to be reached.

* Please delete the words in the brackets if they do not apply.

Signed:

Date:

12/5/2024

Name:

RICHARD GREEN

Relevant professional
qualification(s) or body
(if any):

AAT

Address:

3 MEADOW VIEW

FRAMPTON COTTERELL

BRISTOL BS36 2NF



CHARITY COMMISSION
FOR ENGLAND AND WALES

The You Foundation

Receipts and payments accounts

CC16a

For the period
from

1.4.2023

To

31.3.2024

Section A Receipts and payments

	Unrestricted funds to the nearest £	Restricted funds to the nearest £	Endowment funds to the nearest £	Total funds to the nearest £	Last year to the nearest £
A1 Receipts					
Creative Youth Network grant	-	✓ 30,080	-	30,080	30,900
Other grants	-	✓ 14,810	-	14,810	9,788
Rents	✓ 26,846	-	-	26,846	25,828
Tuck and subs	✓ 5,376	-	-	5,376	3,174
Other income	✓ 885	-	-	885	120
Just giving donations	-	✓ 1,028	-	1,028	-
	-	-	-	-	-
	-	-	-	-	-
Sub total (Gross income for AR)	✓ 33,107	✓ 45,918	-	79,025	69,810
A2 Asset and investment sales, (see table).					
	-	-	-	-	-
	-	-	-	-	-
Sub total	-	-	-	-	-
Total receipts	33,107	45,918	-	79,025	69,810
A3 Payments					
Club expenses	-	✓ 65,427	-	65,427	60,593
Music Studio expenses	-	-	-	-	420
Property expenses	✓ 11,081	-	-	11,081	12,552
	-	-	-	-	-
	-	-	-	-	-
	-	-	-	-	-
	-	-	-	-	-
	-	-	-	-	-
Sub total	✓ 11,081	✓ 65,427	-	76,508	73,565
A4 Asset and investment purchases. (see table)					
	-	-	-	-	-
	-	-	-	-	-
Sub total	-	-	-	-	-
Total payments	11,081	65,427	-	76,508	73,565
Net of receipts/(payments)	22,026	- 19,509	-	2,517	- 3,755
A5 Transfers between funds	-	-	-	-	-
A6 Cash funds last year end	-	-	-	-	-
Cash funds this year end	✓ 22,026	- 19,509	-	2,517	3,755

Section B Statement of assets and liabilities at the end of the period

B1 Cash funds

	Unrestricted funds to nearest £	Restricted funds to nearest £	Endowment funds to nearest £
HSBC bank	37,816	-	-
Cash	61	-	-
	-	-	-
Total cash funds	37,877	-	-
(agree balances with receipts and payments account(s))			

B2 Other monetary assets

Details	Unrestricted funds to nearest £	Restricted funds to nearest £	Endowment funds to nearest £
	-	-	-
	-	-	-
	-	-	-
	-	-	-
	-	-	-
	-	-	-

B3 Investment assets

Details	Fund to which asset belongs	Cost (optional)	Current value (optional)
		-	-
		-	-
		-	-
		-	-
		-	-

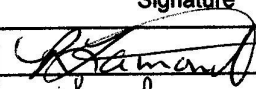
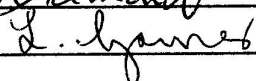
B4 Assets retained for the charity's own use

Details	Fund to which asset belongs	Cost (optional)	Current value (optional)
		-	-
		-	-
		-	-
		-	-
		-	-
		-	-
		-	-
		-	-

B5 Liabilities

Details	Fund to which liability relates	Amount due (optional)	When due (optional)
Move the Mind charity	restricted	1,028	
		-	
		-	
		-	
		-	

Signed by one or two trustees on behalf of all the trustees

Signature	Print Name	Date of approval
	MR R. LAMONT	15-5-24
	MR L. GARNER	15-5-24



Section A

Independent Examiner's Report

Report to the trustees/
members of

THE YOU FOUNDATION

On accounts for the year
ended

31 MARCH 2024

Charity no
(if any)

1162831

Set out on pages

I report to the trustees on my examination of the accounts of the above charity ("the Trust") for the year ended

Responsibilities and
basis of report

As the charity trustees of the Trust, you are responsible for the preparation of the accounts in accordance with the requirements of the Charities Act 2011 ("the Act").

Independent
examiner's statement

I report in respect of my examination of the Trust's accounts carried out under section 145 of the 2011 Act and in carrying out my examination, I have followed the applicable Directions given by the Charity Commission under section 145(5)(b) of the Act.

I have completed my examination. I confirm that no material matters have come to my attention (~~other than that disclosed below~~*) in connection with the examination which gives me cause to believe that in, any material respect:

- accounting records were not kept in accordance with section 130 of the Act or
- the accounts do not accord with the accounting records

I have no concerns and have come across no other matters in connection with the examination to which attention should be drawn in order to enable a proper understanding of the accounts to be reached.

* Please delete the words in the brackets if they do not apply.

Signed:

Date:

12/5/2024

Name:

RICHARD GREEN

Relevant professional
qualification(s) or body
(if any):

AAT

Address:

3 MEADOW VIEW

FRAMPTON COTTERELL

BRISTOL BS36 2NF



CHARITY COMMISSION
FOR ENGLAND AND WALES

The You Foundation

Receipts and payments accounts

CC16a

For the period
from

1.4.2023

To

31.3.2024

Section A Receipts and payments

	Unrestricted funds to the nearest £	Restricted funds to the nearest £	Endowment funds to the nearest £	Total funds to the nearest £	Last year to the nearest £
A1 Receipts					
Creative Youth Network grant	-	✓ 30,080	-	30,080	30,900
Other grants	-	✓ 14,810	-	14,810	9,788
Rents	✓ 26,846	-	-	26,846	25,828
Tuck and subs	✓ 5,376	-	-	5,376	3,174
Other income	✓ 885	-	-	885	120
Just giving donations	-	✓ 1,028	-	1,028	-
	-	-	-	-	-
	-	-	-	-	-
Sub total (Gross income for AR)	✓ 33,107	✓ 45,918	-	79,025	69,810
A2 Asset and investment sales, (see table).					
	-	-	-	-	-
	-	-	-	-	-
Sub total	-	-	-	-	-
Total receipts	33,107	45,918	-	79,025	69,810
A3 Payments					
Club expenses	-	✓ 65,427	-	65,427	60,593
Music Studio expenses	-	-	-	-	420
Property expenses	✓ 11,081	-	-	11,081	12,552
	-	-	-	-	-
	-	-	-	-	-
	-	-	-	-	-
	-	-	-	-	-
	-	-	-	-	-
Sub total	✓ 11,081	✓ 65,427	-	76,508	73,565
A4 Asset and investment purchases. (see table)					
	-	-	-	-	-
	-	-	-	-	-
Sub total	-	-	-	-	-
Total payments	11,081	65,427	-	76,508	73,565
Net of receipts/(payments)	22,026	- 19,509	-	2,517	- 3,755
A5 Transfers between funds	-	-	-	-	-
A6 Cash funds last year end	-	-	-	-	-
Cash funds this year end	✓ 22,026	- 19,509	-	2,517	3,755

Section B Statement of assets and liabilities at the end of the period

B1 Cash funds

	Unrestricted funds to nearest £	Restricted funds to nearest £	Endowment funds to nearest £
HSBC bank	37,816	-	-
Cash	61	-	-
	-	-	-
Total cash funds	37,877	-	-
(agree balances with receipts and payments account(s))			

B2 Other monetary assets

Details	Unrestricted funds to nearest £	Restricted funds to nearest £	Endowment funds to nearest £
	-	-	-
	-	-	-
	-	-	-
	-	-	-
	-	-	-
	-	-	-

B3 Investment assets

Details	Fund to which asset belongs	Cost (optional)	Current value (optional)
		-	-
		-	-
		-	-
		-	-
		-	-

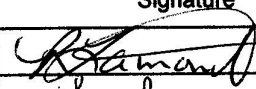
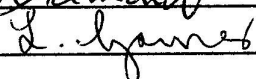
B4 Assets retained for the charity's own use

Details	Fund to which asset belongs	Cost (optional)	Current value (optional)
		-	-
		-	-
		-	-
		-	-
		-	-
		-	-
		-	-
		-	-

B5 Liabilities

Details	Fund to which liability relates	Amount due (optional)	When due (optional)
Move the Mind charity	restricted	1,028	
		-	
		-	
		-	
		-	

Signed by one or two trustees on behalf of all the trustees

Signature	Print Name	Date of approval
	MR R. LAMONT	15-5-24
	MR L. GARNER	15-5-24