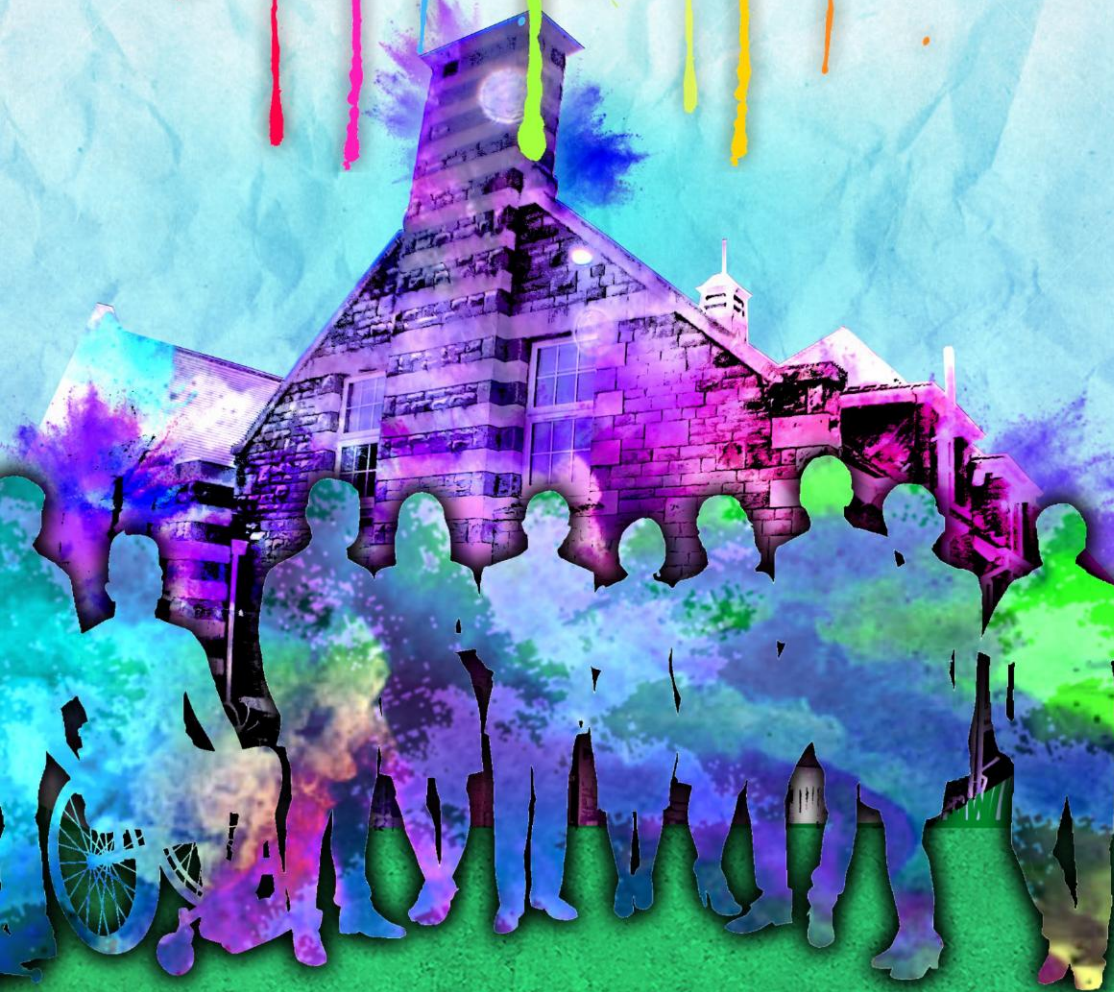


THEYOUFOUNDATION



[www.theyoufoundation.org](http://www.theyoufoundation.org)

Facebook Instagram staplehill youth

[staplehill youth@hotmail.co.uk](mailto:staplehill youth@hotmail.co.uk)



The Boarding School



[www.theyoufoundation.org](http://www.theyoufoundation.org)

Facebook Instagram theboardingschoolsk8

[theboardingschoolsk8@gmail.com](mailto:theboardingschoolsk8@gmail.com)



# Welcome

The last year has really seen the Youf Club return to normal, following Covid-19 and the project taking a new direction. Some of the temporary changes we made following the covid safe measures we've decided to keep, such as multiple separate sessions on an evening. This means more young people can attend and hang out with their friends without it feeling over crowded. Each of these separate sessions has it's own atmosphere and it's been really cool to see groups grow and support each other in different ways.

## Statistics

**109**  
SESSIONS

THAT'S TWO SESSIONS  
A WEEK, FOR 48 WEEKS  
OF THE YEAR PLUS OUR  
SUNDAY SESSIONS!

ON TOP OF THIS WE'VE  
HAD TRIPS, COMMUNITY  
DAYS, WORKSHOPS  
AND MUCH MORE

**2321**  
ATTENDANCES

THAT'S AN AVERAGE OF  
20 YOUNG PEOPLE AT  
EVERY SESSION!

OUR BUSIEST SESSION IS  
USUALLY A MONDAY  
NIGHT, WITH THE  
BUSIEST THIS YEAR  
SEEING 50 YOUNG  
PEOPLE

**287**  
YOUNG  
PEOPLE

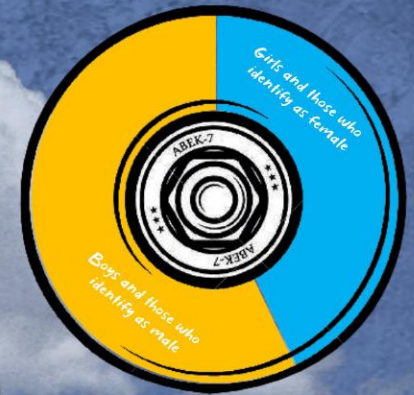
WE'VE SUPPORTED 287  
INDIVIDUAL YOUNG  
PEOPLE IN POSITIVE  
ACTIVITIES AND  
LEARNING NEW SKILLS

**6**  
COMMUNITY  
GROUPS

WE'RE SUPPORTED BY  
SIX AMAZING GROUPS,  
WITH OVER 300  
WEEKLY USERS OF THE  
BUILDING

## Attendance by Gender

Skating can be a very male dominated activity, which can make skateparks quite intimidating places for some. We are thrilled to have a very close gender split, and will continue to champion Girls in skateboarding through weekly girls only session and comps



## Attendance by Age

Primarily for funders, this chart shows the majority of young people we work with are aged 13 - 19.

10-12 in blue

18+ with SEN in yellow



## Attendance by Session

Sunday	: 299
Monday 11to15s	: 696
Monday 15+	: 302
Girls Only	: 412
Weds	: 357
YOUNG Cafe	: 255





# YOUF Cafe

The YOUF cafe is our hangout session. You can grab a milkshake or slice from our youth volunteer run cafe, shoot some pool, or try our retro games arcade.

There's usually other small projects to get involved in too or if you want to try something we don't do, ask us to set it up!



We do trips and events too



# The Boarding School

The Boarding school is the name of our indoor skatepark project. We offer sessions for different age ranges as well as a popular Girl's Only session. We have skate coaches on hand to offer help when needed, and the ramps are all quite small and mellow, perfect for practising tricks, learning new ones and meeting new people.

MONDAY	GIRLS ONLY 11+ 4:30-6PM	11- 15YRS OPEN SKATE 6-7:30PM	15-19YRS OPEN SKATE 7:30-9PM	
WEDNESDAY	11 - 19 YRS OPEN SKATE 4:30-6:30PM			
SUNDAY	11- 15YRS OPEN SKATE 4-6PM	7+YRS PUBLIC SKATE OPEN TO ALL 6-8PM	PRIVATE HIRE 8PM+	



It's all about learning to Skate in a safe, dry, awesome space. There's always other projects on the boil from making ramps to art, Lots of other things to do (check the YOUNG club page), and other ways to get involved like volunteering or with our skate committee



# *Trips*

*We've done some great trips over the last year, but favourite has to be our Camp Hillerest residential. A 2 day 170 mile road trip to skate 4 parks!*

*Other highlights include:*

*Out n About events like Emersons Green skatepark jam*

*Private hire of Spit and sawdust in January*

*Pitt St trip taking in Warminster on the way!*



# *Volunteers*

*We've been blessed with some amazing volunteers this year that have helped the project massively, Thank you!*

*Our skate committee is a voluntary group of young people who meet roughly 4 times a year to discuss the project and plan improvements, trips, and events.*

*This year the volunteer projects have included: making skate chairs, a radical pet photo competition, a tech deck table, new ramps, and expanding the skate cafe menu for Duke Of Edinburgh award*





# 2022

2022 kicks off with volunteers helping to build the spine ramp Voted for by the skate committee.



Young carers action day, 40+ young people taking part in workshops at the YOUNG Centre.



June  
Two busy Jubilee events sharing the stoke of skateboarding to 40+ Young people.

Girls out number boys attending for the first time!

July: We held our first Birthday Comp!  
Girls Comp and mixed had 15+ participants. Lots of games and mini comps too!



## EMERSONS GREEN

August we helped CYN run the Emersons green Jam. With DJ, Graffiti art workshops, BBQ and comps and prizes the wet weather could not stop the shred



September we went on a crazy 170 mile road trip over two days to visit 5 rad skateparks.  
Planned by the skate committee this is the first of many.

## ROAD TRIP



# 2023

2022 closed out with a Secret Santa encouraging young people to make gifts for each other and a stocking filler hunt around the skatepark.



October we threw another legendary halloween jam. The tombstone of terror inspired lots of daring action and the costumes were wicked



The Project now has 3 young volunteers helping out, building ramps and running the show!

## Boarding SCHOOL

PHOTO COMPETITION

Our Wed Eve volunteer Alice ran a radical pets photo competition and we had so many amazing entries we couldn't pick just one winner!



An ongoing project was our tech deck table. Made by young people it uses wood, foam, plaster, paint and resin!



## TECH DECK

SPIT & SAWDUST



In January 2023 we hired Cardiff's best skatepark to ourselves and took a minibus full of young people to shred.





CHARITY COMMISSION  
FOR ENGLAND AND WALES

The You Foundation

## Receipts and payments accounts

CC16a

For the period  
from

1.4.2022

To

31.3.2023

### Section A Receipts and payments

	Unrestricted funds to the nearest £	Restricted funds to the nearest £	Endowment funds to the nearest £	Total funds to the nearest £	Last year to the nearest £
<b>A1 Receipts</b>					
1 Creative Youth Network Grant	-	30,900	-	30,900	39,460
South Gloucestershire Grant	-	-	-	-	5,000
3 other grants	-	9,788	-	9,788	-
4 Rents	25,828	-	-	25,828	23,905
5 Tuck and subs	3,174	-	-	3,174	1,098
6 Other income	120	-	-	120	410
	-	-	-	-	-
	-	-	-	-	-
<b>Sub total (Gross income for AR)</b>	<b>29,122</b>	<b>40,688</b>	<b>-</b>	<b>69,810</b>	<b>69,873</b>
<b>A2 Asset and investment sales, (see table).</b>					
	-	-	-	-	-
	-	-	-	-	-
<b>Sub total</b>	<b>-</b>	<b>-</b>	<b>-</b>	<b>-</b>	<b>-</b>
<b>Total receipts</b>	<b>29,122</b>	<b>40,688</b>	<b>-</b>	<b>69,810</b>	<b>69,873</b>
<b>A3 Payments</b>					
1 Club expenses	-	60,593	-	60,593	47,697
Skate Boarding expenses	-	-	-	-	1,050
3 Music studio expenses	420	-	-	420	3,367
Detached Work expenses	-	-	-	-	98
5 Property expenses	12,552	-	-	12,552	8,840
	-	-	-	-	-
	-	-	-	-	-
	-	-	-	-	-
	-	-	-	-	-
<b>Sub total</b>	<b>12,972</b>	<b>60,593</b>	<b>-</b>	<b>73,565</b>	<b>61,052</b>
<b>A4 Asset and investment purchases, (see table)</b>					
	-	-	-	-	-
	-	-	-	-	-
<b>Sub total</b>	<b>-</b>	<b>-</b>	<b>-</b>	<b>-</b>	<b>-</b>
<b>Total payments</b>	<b>12,972</b>	<b>60,593</b>	<b>-</b>	<b>73,565</b>	<b>61,052</b>
<b>Net of receipts/(payments)</b>	<b>16,150</b>	<b>- 19,905</b>	<b>-</b>	<b>- 3,755</b>	<b>8,821</b>
<b>A5 Transfers between funds</b>	<b>-</b>	<b>-</b>	<b>-</b>	<b>-</b>	<b>-</b>
<b>A6 Cash funds last year end</b>	<b>-</b>	<b>-</b>	<b>-</b>	<b>-</b>	<b>-</b>
<b>Cash funds this year end</b>	<b>16,150</b>	<b>- 19,905</b>	<b>-</b>	<b>- 3,755</b>	<b>8,821</b>

## Section B Statement of assets and liabilities at the end of the period

Categories	Details	Unrestricted funds to nearest £	Restricted funds to nearest £	Endowment funds to nearest £
<b>B1 Cash funds</b>	Hsbc bank	35,070	-	-
	Cash	290	-	-
		-	-	-
	<b>Total cash funds</b>	<b>35,360</b>	<b>-</b>	<b>-</b>
	(agree balances with receipts and payments account(s))			

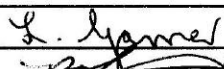
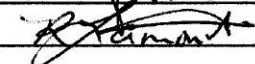
	Details	Unrestricted funds to nearest £	Restricted funds to nearest £	Endowment funds to nearest £
<b>B2 Other monetary assets</b>		-	-	-
		-	-	-
		-	-	-
		-	-	-
		-	-	-
		-	-	-

	Details	Fund to which asset belongs	Cost (optional)	Current value (optional)
<b>B3 Investment assets</b>			-	-
			-	-
			-	-
			-	-
			-	-

	Details	Fund to which asset belongs	Cost (optional)	Current value (optional)
<b>B4 Assets retained for the charity's own use</b>			-	-
			-	-
			-	-
			-	-
			-	-
			-	-
			-	-
			-	-

	Details	Fund to which liability relates	Amount due (optional)	When due (optional)
<b>B5 Liabilities</b>			-	
			-	
			-	
			-	
			-	

Signed by one or two trustees on behalf of all the trustees

Signature	Print Name	Date of approval
	L. GARNER	30.4.2023
	R. LAMONT	30.4.2023





**CHARITY COMMISSION  
FOR ENGLAND AND WALES**

**Independent examiner's  
report on the accounts**

Section A

Independent Examiner's Report

Report to the trustees/  
members of

THE YOU FOUNDATION

On accounts for the year  
ended

31-3-2023

Charity no  
(if any)

1162831

Set out on pages

1

I report to the trustees on my examination of the accounts of the above charity ("the Trust") for the year ended

Responsibilities and  
basis of report

As the charity trustees of the Trust, you are responsible for the preparation of the accounts in accordance with the requirements of the Charities Act 2011 ("the Act").

Independent  
examiner's statement

I report in respect of my examination of the Trust's accounts carried out under section 145 of the 2011 Act and in carrying out my examination, I have followed the applicable Directions given by the Charity Commission under section 145(5)(b) of the Act.

I have completed my examination. I confirm that no material matters have come to my attention (~~other than that disclosed below~~\*) in connection with the examination which gives me cause to believe that in, any material respect:

- accounting records were not kept in accordance with section 130 of the Act or
- the accounts do not accord with the accounting records

I have no concerns and have come across no other matters in connection with the examination to which attention should be drawn in order to enable a proper understanding of the accounts to be reached.

\* Please delete the words in the brackets if they do not apply.

Signed:

Date: 19/6/2023

Name:

RICHARD GREEN

Relevant professional  
qualification(s) or body  
(if any):

AAT

Address:

3 MEADOW VIEW  
FRAMPTON COTTERELL  
BRISTOL BS36 2NF