

BOLTON ADULT AUTISM SUPPORT

England & Wales · Charity number 1162560

Details

Other names BOLTON ADULT ASPERGER SUPPORT, BAAS

Status Registered

Legal form Other

Registered 2015-07-07

Register [View on the Charity Commission register](#)

Contact

Address 1st Floor
Nelson House
Nelson Square
Bolton
Greater Manchester

Phone 01204 968320

Email contact@boltonadultautismsupport.org.uk

Website www.boltonadultautismsupport.org.uk

Activities

Objects: THE OBJECTS OF THE CHARITY ARE:TO SUPPORT ADULTS WHO HAVE AUTISM SPECTRUM CONDITIONS (ASCS) AND THEIR CARERS/PARENTS IN BOLTON AND SURROUNDING AREAS.TO PROVIDE RESOURCES, INFORMATION AND ADVOCACY TO INDIVIDUALS AND FAMILIES AFFECTEDBY AUTISM, INCLUDING THE RELIEF FROM POVERTY AND DISTRESS.TO ADVANCE THE EDUCATION OF THE GENERAL PUBLIC AND ORGANISATIONS FACING THE PUBLIC IN ALL AREAS RELATING TO AUTISM SPECTRUM CONDITIONS

Activities: Bolton Adult Autism Support (BAAS) is a grassroots charity supporting autistic adults and their carers. Our Vision is a society that accepts, involves and understands autistic people. Where all autistic adults and their carers feel they belong. Our service offers a Befriending Service, Group Social & Life Skills Events, Welfare Benefits Advocacy, Carers Only Support & Autism Awareness Training.

Classification

- **How:** Provides Services, Provides Advocacy/advice/information
- **What:** Education/training, The Advancement Of Health Or Saving Of Lives, Disability, The Prevention Or Relief Of Poverty
- **Who:** People With Disabilities, Other Defined Groups

Geography

- Bolton

Finances

Period end	Income	Expenditure	Assets	Employees
2025-12-31	£115,691	£96,112	-	-
2024-10-31	£71,885	£73,080	-	-
2023-10-31	£48,605	£20,380	-	-
2022-10-31	£19,449	£17,634	-	-
2021-10-31	£9,705	£3,111	-	-

Trustees

Name	Role	Appointed
Anita Powley	Chair	2025-01-23
Daniel James Morris		2025-08-14
Hannah Mary Lovatt		2025-01-23
Michelle Grogan		2023-06-26
Nathaniel Akande		2025-09-10
Ralph John Ellerton		2023-04-22
Roselle Gorman		2023-12-11

BOLTON ADULT AUTISM SUPPORT

England & Wales - Charity number 1162560

Accounts



**Trustees' Annual Report
and Financial Statements
for the 14 Month Period Ended
31st December 2025**



Registered Charity No: 1162560



CONTENTS

Legal & Administrative Information	3
Who We Are	4
Achievements & Performance	6
The Difference BAAS Makes	8
Befriending Service	9
Social & Life Skills	10
Welfare Benefits & Advocacy	11
Carers Support	13
Volunteering at BAAS & Training Delivery	14
Community	17
Financial Review & Future Plans	18
Structure, Governance & Management	21
Trustees' Responsibilities in Relation to Financial Management	22
Independent Examiner's Report	23
Statement of Financial Activities	24
Notes to the Financial Statements	26

Legal and Administrative Information

Bolton Adult Autism Support is a registered charity No: 1162560
 The principal office and registered address is
 1st Floor, Nelson House, Nelson Square, Bolton, BL1 1JT

GOVERNING DOCUMENT	Constitution
TRUSTEE BOARD	
Chair	Roselle Gorman
Vice-Chair	Anita Powley
Treasurer	Ralph Ellerton, FCA
Honorary Secretary	Nathaniel Akande
Other Trustees	Michelle Grogan Paul Aldred Hannah Lovatt Sara Kehoe
Co-Opted Trustees	Daniel Morris
Management	Vicky Kenyon, Service Manager
Independent Examiners	Harts Ltd; Westminster House, 10 Westminster Road, Macclesfield, SK12 1BX
Bankers	Lloyds Bank Plc; 25 Gresham Street, London, EC2V 7HN

WHO WE ARE

Bolton Adult Autism Support (BAAS) is an award winning grassroots charity based in Bolton supporting Autistic Adults and their Carers

Our Vision

A society that accepts, involves and understands autistic people. Where all autistic adults and their carers feel they belong.



Our Values go **ACROSS** the Autistic Spectrum:-

- Acceptance
- Connection
- Respect
- Openness
- Sensitivity
- Support

OPERATIONS

As a small charity, the part-time staffing structure of BAAS is as follows:-

Service Manager and Designated Safeguarding Lead

The Board of Trustees delegate the day to day running of BAAS to Vicky, who is responsible for the oversight of all operational matters, including funding procurement. Vicky also provides first tier Tribunal representation during disability welfare benefit appeals.

Volunteer Coordinator

Vivian manages the befriending service, and provides support for all those engaged in the befriending service project. Vivian also manages the recruitment, onboarding and line management of our team of volunteers.

Welfare Benefits Adviser

Zara assists service beneficiaries to apply for disability benefits, as well as helping them to challenge adverse benefit decisions. Zara's role is evolving as she is also about to embark on delivering employment advocacy at BAAS.

Outreach Project Lead

Carol leads our social and life skills events for service beneficiaries. Together with having general oversight of this project, Carol also has direct responsibility for facilitating each of the life skills sessions.

Training & Outreach Facilitator

Jasmine delivers our training modules to volunteers and external organisations. Jasmine also works alongside Carol on the social and life skills project, facilitating each of the arts and crafts workshops.

Junior Administrator

Poppy provides administrative support primarily to the Service Manager and Volunteer Coordinator, but is also available to support the full operational team, when required.

Office Cleaner

Julie looks after our office, ensuring a pleasant environment for all.

ACHIEVEMENTS

To build on the success of the Queen's Award for Voluntary Service, granted to BAAS in June 2020, our governing and operational teams have worked really hard over the last reporting year to gain further recognition for the positive ways in which we perform, and the difference we continue to make within our local community.

In November 2024, we were really proud to be granted **Bolton's Volunteer Charter**, which recognises the high standards of practice we engage in when working alongside our wonderful team of volunteers.

In early summer 2025, we then submitted almost 40 separate pieces of evidence, which were assessed by Bolton CVS in conjunction with Bolton Council, and in August 2025 we were absolutely thrilled to be awarded the **Bolton Quality Mark**, which recognises VCSE organisations who are:-

"complying with all robust operating standards as set by the Bolton Mark Board, deeming the organisation safe, accessible and effective. The accreditation is a mark of high quality for organisations working within communities."



Team BAAS being presented with the **Bolton Quality Mark**, by Dawn Yates-Obe, Chief Executive at Bolton CVS

PERFORMANCE

4 Student
Work
Placements
supported

439
attendances
across **70**
Social & Life
Skills Sessions

65 Training
Modules
Delivered

33 Voluntary
roles
facilitated

"BAAS is great, my confidence has definitely increased. I've learned more about myself & feel welcomed & respected when I come to sessions."

Sana, June 2025

"I really enjoyed spending time with BAAS. It was my first time out of the house in a while. The staff helped by talking to me. I go mute when I get overwhelmed. The staff talking to me really enabled me to relax and enjoy my time with them. I am looking forward to seeing the staff again at the sessions. I was scared of coming to them before but I'm not now."

Kenny, Oct 2025

"The trip to York with BAAS was a really nice chance to go outside and see more of the places I would never have the courage to go to alone. Thank you."

Louisa, Oct 2024

20 Befriending
relationships
supported

39 Disability
Welfare Benefit
Issues
supported

£292,338 in
confirmed
welfare benefit
entitlement
achieved

1,019 hours of
voluntary
Work
undertaken

637 Visitors
welcomed &
supported at
the BAAS office

51 attendances
at **10** Carers
Only Sessions

21 Autism
Discussion
Groups held

746 separate
service
beneficiary
issues
supported

THE DIFFERENCE BAAS MAKES

In June 2025 we circulated a survey on both our social media and via email, asking our Service Beneficiaries to provide feedback on the service they receive at BAAS, with the following results:-

86% of respondents felt they had received good quality support

76% of those engaged with BAAS reported an improvement in their wellbeing

81% were satisfied with the length of time they had waited for support

91% felt as though they had been understood and treated as an individual

86% of respondents felt they had been listened to and treated with respect

Qualitative Feedback

"I think people can be involved with BAAS as little or as much as they want/need, but sometimes I think BAAS needs more staff to give a more tailored approach."

"BAAS staff made me feel seen and validated. Which probably saved my life at the time."

"Amazing group of people. I feel listened to and understood. The support BAAS provides is unmeasurable. I have only experienced BAAS as a carer and through the welfare benefits service, but I cannot thank them enough. I am aware of the service they provide for autistic adults and it is a comfort to know they are there if/when needed."

"I really enjoy being a part of BAAS and being able to talk to people about autism with confidence."

BEFRIENDING SERVICE

Our unique **Autism Specific Adult Focused Befriending Service** continues to be an extremely valuable resource in Bolton, meeting the needs of autistic adults who require more bespoke levels of support. Together with the direct beneficiaries of the Befriending Service, this project also benefits carers whose loved ones are thriving, as well as our fantastic volunteers who achieve great job satisfaction from their voluntary work.

The popularity of the Befriending Service has, however, resulted in there being an extended waiting list for service beneficiaries seeking this support, as the demand in people requesting a befriender has consistently outstripped the rate of volunteer recruitment, and our operational capacity to manage an increasing number of befriending relationships.

BAAS has supported **20** Befriending Relationships within the last reporting year, and the impact of the Befriending Service continues to be a really beneficial one for those engaged in befriending matches. After completion of wellbeing assessments we have found the following:-

Service Beneficiary overall life satisfaction levels at the start of a befriending relationship were an **average of 41%**.

After 12 months engagement with a Volunteer Befriender, these self-reported life satisfaction levels had **risen to 79%**.

Almost doubling the levels of happiness that autistic adults experience!

At the start of the year we matched, Nancy, an autistic adult and unpaid carer, to volunteer as a befriender with Lucy, an autistic adult living in supported accommodation. Nancy and Lucy have the following to say about their experience of being part of a befriending relationship:-

"I struggle to make friendships as an autistic adult, it's really nice to know there is someone out there who will meet up with me for a coffee and chat."

Lucy

"I enjoy meeting the person I befriend, we have really good chats. The person I am matched with is an absolute fountain of knowledge, and I am learning so much from spending time with them."

Nancy

SOCIAL & LIFE SKILLS

We have continued to deliver our Social & Life Skills Project, with **70** sessions being held this reporting year, and **439** attendances across these events. Our fortnightly Autism Discussion Groups continue to be a really valuable resource for service beneficiaries to come together, and share their life experiences in a safe, supportive environment.

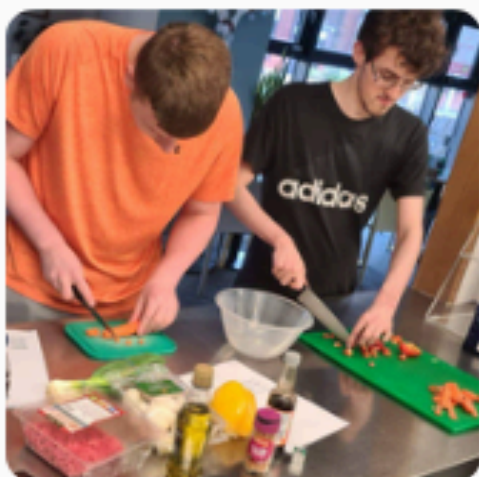
Equally of value has been the community trips, quiz nights, arts and crafts workshops and life skills sessions, such as cooking skills, where we help our service beneficiaries to gain confidence in the kitchen, as well as give tips on healthy eating and economic grocery shopping.



Day Trip to York



A Walk in the Park



**Cooking Skills
Cajun Rice**



**An afternoon at
Crazy Golf**



Lego Building Evening

WELFARE BENEFITS

With formal training and ongoing support from the Service Manager, who has a background in welfare benefits delivery at Citizens Advice, our dedicated Welfare Benefits Adviser has continued to gain valuable experience in her role, providing direct support to Autistic Adults and their Carers, enabling them to achieve the disability welfare benefits to which are entitled.

At BAAS, we support people at every stage of the disability welfare benefit process, from first application all the way through to representation at First Tier Tribunal Appeals. The extensive lived experience of BAAS staff, ensures our team are uniquely placed to offer this type of individualised support where it is needed the most, alleviating poverty and improving the wellbeing of autistic adults and carers alike.

Throughout this reporting year, **32 individuals** have been supported in either the application or appeal of the following **39 benefit issues**:-

12 Personal Independence Payments Applications

10 Personal Independence Payments Renewals

11 Personal Independence Payments Mandatory Reconsiderations

2 Personal Independence Payments First Tier Tribunal Appeals

3 Universal Credit Limited Capability for Work Applications

1 Universal Credit Limited Capability for Work Mandatory Reconsideration

23 outcomes have so far been received for the above benefit issues, with **17 of these 23** receiving a successful result with an **ongoing award of disability welfare benefits**, ranging from a period of **2 to 6 years**, providing our service beneficiaries with **long term financial security**.

In this reporting year, a total of **£292,338** in confirmed welfare benefit entitlement has already been awarded, with a further projected welfare benefit entitlement of **£243,031** expected!

ADVOCACY

A Case Study

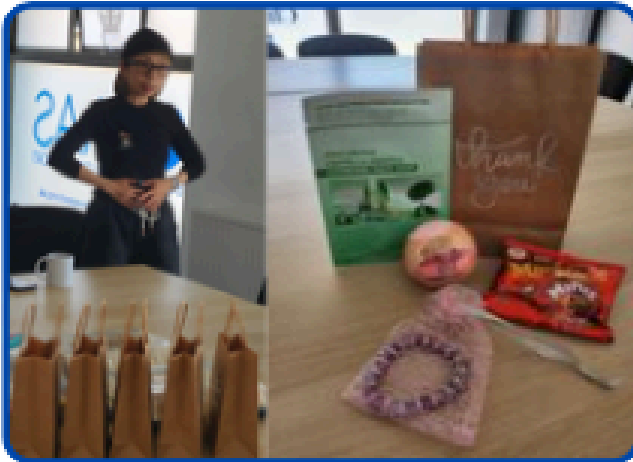
Mary, an unpaid carer in her 60's, lives with and is the only support system for her autistic grandson Joseph, in his early 20's. Mary is the appointee for Joseph and manages all issues on his behalf. Mary came to BAAS seeking support with Joseph's Personal Independence Payments renewal. We supported Mary and Joseph to complete a PIP renewal form and also helped them with advocacy during a PIP telephone medical assessment with the DWP. At reassessment, the DWP unfortunately found Joseph to be ineligible to receive PIP. Mary and Joseph felt defeated by this and were about to give up, when we encouraged them to keep trying as we had assessed Joseph as still meeting the criteria for an award. We went on to support them with a mandatory reconsideration, and after looking at Joseph's application again, the DWP decided to reinstate Joseph's standard daily living component of PIP for a period of 3 years, **totalling £12,474, plus a backpayment of £1,140.**

During the exploration stage of our initial appointment, we also discovered that Joseph had been pressured to sign up for a training course that he was unable to undertake, because of the way he was impacted by Autism and ADHD, and the 80 mile round trip that he would be required to travel each day. Due to a combination of impulsivity caused by ADHD and a social communication disability, Joseph struggled to recognise that he was being unfairly pressured into signing up for the course, or fully consider the implications when making this commitment. When Mary, who had not been present at the time that Joseph signed up for the course, learned of the events and complained to the college, explaining Joseph's circumstances, the college refused to take Joseph's neurodiversity into account, insisting he must still pay for the course, whether he attended or not, as he had signed a contract with them. When the fee remained unpaid, the college then passed the outstanding course fee of **£5,560** onto a debt collector. With Joseph and Mary's consent, we liaised with our colleagues at Bolton Money Skills Service, who advised us of the steps we needed to take to provide effective advocacy, and following this, we wrote to both the college and the debt collector, explaining the reasons why it was not possible for Joseph to undertake the course, the unfair circumstances that were involved when he signed up, along with the significant detrimental impact pursuing the outstanding fee was having on both of our service beneficiaries.

Following our intervention, the college agreed to wipe the course fee, and the **outstanding debt of £5,560 was revoked.**

CARERS SUPPORT

Our monthly Carers Only Support Group, headed in a voluntary capacity by the Chair of Trustees, Roselle, continues to be an extremely valuable resource for unpaid carers of autistic adults in Bolton, providing a safe space, opportunities to chat about shared life experiences and the chance to receive useful information, helping our carers to feel connected within their local community and truly valued in their role.



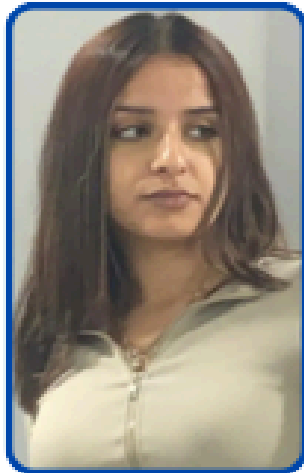
For Carers Week 2025, we held a special event, providing a buffet for carers, a goody bag of wellbeing treats, and we also delivered a wellbeing workshop, helping carers to pause, take time to reflect and connect with their bodies through breathwork and relaxation techniques.

We have also collaborated on two occasions with Stars & Stiches, a local organisation looking after others through the means of art. Our carers have really benefited from the input and expertise of Stars & Stiches, helping them to explore their emotions through their own creativity.



In addition to the pastoral activities described above, we have also facilitated some information sessions, such as Co-op Money Services, Bolton Money Skills and One-Point Counselling Service, equipping our carers with knowledge of local services which may help their circumstances. There have been **51** attendances across **10** Carers events.

VOLUNTEERING AT BAAS



Student Work Placement Provider

"My placement at BAAS has been a very informative experience. Sitting in meetings, I have not only learnt about the way autistic adults live their lives, but also the ways in which their carers do too. BAAS has expanded my interpersonal and professional skills, which I will go on to utilise in the future. I am grateful for my placement to have been at BAAS, and I have learned so much during the weeks I have been here. This placement has helped to point me in the direction for which I would like my future career to be focussed. Thank you!"

Amaani, Psychology and Counselling with Psychotherapy Third Year Student
Manchester Metropolitan University, Oct 2025

Thanks to the dedication and hard work of our Volunteer Coordinator, we have been incredibly fortunate to have worked alongside an invaluable team of **33 Volunteers** this year, who have undertaken the following roles:-

Befriending Volunteers

19 volunteers have been involved in supporting autistic adults through bespoke one to one befriending relationships.

Social Activity Volunteers

8 volunteers have supported our service beneficiaries and outreach team at social activities.

Administrative Volunteers

2 volunteers have worked in the office to help us with ongoing administration, undertaking tasks such as updating our website.

Student Work Placements

We have been really pleased to welcome and support **4** student work placements from Manchester Metropolitan University.

We asked our volunteers why they choose to freely give their valuable time to help BAAS support autistic adults and carers, and you can hear some of their thoughts on the following page!

VOLUNTEER TESTIMONIALS

"I volunteer with BAAS, because I know through personal experience, and believe, that BAAS as a charity can make a difference to the happiness and wellbeing of those who are neurodiverse and their families and carers."

Marion
Befriending Volunteer

Michael,
Admin Volunteer

"I volunteer to give some purpose in my life and use skills that I have learnt in the past. I enjoy doing administration work because I not only learn about new things, but I contribute greatly to the charity."

"I volunteer at BAAS to gain experience in providing one to one support to an autistic adult, helping to reduce their social isolation. I enjoy meeting up each week and having really good conversations."

Samantha
Befriending Volunteer

Kayleigh
Activities Volunteer

"I volunteer because I want to be part of the autistic community. I quickly grew to realise that BAAS is an encouraging, welcoming charity and through volunteering I get to help people who may not find support elsewhere. It makes me feel like I'm doing something truly meaningful."

In the last reporting year **1,019 hours** of voluntary service has taken place at BAAS!!!

TRAINING DELIVERY

At BAAS we have a structured and rigorous in house training program which we deliver to all of our volunteers, enabling them to support our service beneficiaries in the best possible way. We also deliver this training to new staff members, trustees, and when invited, external organisations.

We have three separate modules which people undertake, and the training is delivered by our Training & Outreach Facilitator. The feedback detailed below is from volunteers who have engaged in our training program:-

Autism Awareness Module

"I found the training to be very informative and it has answered questions I had, an excellent presentation. I now feel I have a really good understanding of autism."

"The material is really comprehensive. It was quite educational to come across new things about autism. Those delivering training absolutely had a good understanding of the topic and the explanations which came along with the training were really helpful. The trainer did a good job in making the session engaging."

Befriending Module

"The course materials are very detailed, using explicit examples and instances. The choice of words are also simple and easy to understand. The trainer used relatable examples which really aided my understanding."

"I would recommend BAAS to other organisations for their knowledgeable and well informed training. Thank you, the material is well structured and engaging and it provided valuable knowledge that I can apply in my new voluntary role."

Adult Safeguarding & Confidentiality Module

"I found that the manner in which the subject matter was approached was delivered in a very thoughtful and interactive way."

"The course material was clear and very informative, providing practical insights into safeguarding responsibilities. The trainer demonstrated a very good understanding of the course material, and the course has increased my knowledge and clarified key aspects of safeguarding practice."

In this reporting year we have delivered **65** training modules, with **100%** of those having taken part saying they would recommend our training program to others!

COMMUNITY

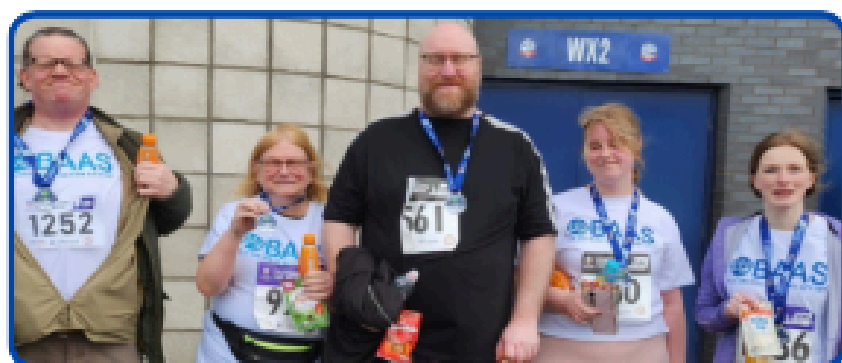
We have continued to build on our community presence this year, and have also benefitted from some fantastic support from those who live in and around Bolton.

We had a great time in April - the month that celebrates World Autism Awareness Day!!



We kicked things off by being invited to appear on **Bolton FM** for an **Autism Awareness special broadcast**.

Our Chair of the Board of Trustees, Roselle, accepted an incredibly generous donation on behalf of BAAS for **£965** from **Phil & Jacqui** of the East Lancashire Masonic Charity, who kindly wished to support our work due to their own personal connection to autism.



Our Vice-Chair, Anita, led a fabulous team of staff, service beneficiaries and volunteers, who all took to the streets to complete **Bolton's 10K**, raising a fantastic **£1,557**.

FINANCIAL REVIEW

Funding Sources

BAAS is totally dependent on the support of grants received from charities and funders who recognise the unique work that we are undertaking with adults who are no longer supported by state resources.

We are now entering the final year of our National Lottery Reaching Communities Fund, which has supported our Befriending Service since 2021.

We are grateful to have the strong support of the Lloyds Foundation via their 'by invitation only' 3 year unrestricted Financial Resilience Fund, reflecting the importance of the work we do to alleviate poverty and distress for vulnerable people.

The CRH Charitable Trust has continued to recognise the importance of the social support and life skills we offer to autistic adults and have awarded us two-year funding to expand this service and employ two members of project staff.

A generous unrestricted grant from Postcode Neighbourhood Trust has strengthened the financial position of the charity.

We have also been supported by The Bolton Fund to deliver our monthly Carers Only Sessions and also part-funds our work alongside Bolton Work Well to deliver employability skills to autistic adults.

Other funders we feel exceptionally fortunate to be funded by include the Sir James and Lady Scott Trust, Eric Wright Charitable Trust, Asda Foundation, Morrisons Foundation, Stagecoach Fund, Peter Kershaw Trust and the Skipton Charitable Foundation.

We have also enjoyed our most successful period of community fundraising to date, through the work of our Fundraising Committee and generous donations from members of the public.

Unrestricted Reserves

At 31st December 2025 the reserves totalled £60,844 (31st October 2024 £22,303). Trustees are aware that the main National Lottery grant will not be renewed in the current year. Confirmed sources of unrestricted Fund Income are less than £57,000, expected operating costs will exceed £149,000. The current level of reserves is considered adequate pending new sources of grant income being identified.

FINANCIAL REVIEW

Statement of Public Benefit

In planning our activities for the period, we kept in mind the Charity Commission's guidance on public benefit at our Trustee meetings. The main activities are to provide social support to adults who are outside the scope of state welfare, and to assist in the process of registration for appropriate benefits.

Reserves Policy

The Trustees review the Charity's reserves policies annually to ensure that they remain appropriate in the light of the Charity's activities, financial commitments and risk profile. The policies are designed to provide financial stability, support the Charity's strategic objectives and ensure the Charity can respond to unforeseen events or changes in income.

Risk Management

Financial forecasts are updated and reviewed at each Trustee meeting. The reserves policy is reappraised against the forecast for future grants approved and applied for.

To manage the risks of compliance breaches, the board conducts annual reviews of safeguarding policies, GDPR compliance, and trustee training. The register of safeguarding incidents is regularly reviewed by senior management and trustees, to ensure safe and effective operations.

Financial Results

Income in the year was £115,691 (2024 £71,885), the increase due to successful fund raising in anticipation of the increase in staff and expansion of our services.

Expenditure on Charitable Activities increased from £33,701 to £57,464 due to the expansion in service and events provided to our beneficiaries.
Administrative Expenses at £37,107 (2024 £37,104).

Resulting deficit/surplus of £19,579 (2024 deficit £1,195) is divided between Restricted funds deficit £18,962 (2024 deficit £3,450) and Unrestricted funds surplus £38,541 (2024 £2,255). At the year end the Unrestricted Fund balance is £60,844 (2024 £22,303), the Restricted Fund £13,068 (2024 £32,030).

FUTURE PLANS

We're really proud at BAAS to have an ethos of total inclusion, and this is something we are determined to continue with, as we grow and prosper further.

5 out of 6 operational staff have direct lived experience of autism, including 3 who have a diagnosis of autism themselves.

In addition, 4 out of 8 trustees have direct lived experience of autism, including 3 who are also diagnosed.

Having decision makers from the very demographics we seek to support is integral to our approach. As we move forward into our next chapter, we will continue to harness this strength within the organisation, listening to autistic adults and carers, ensuring we reach and support even more adults whose lives have been touched by autism.

Our Plans

Over the next 12 months we plan to do the following:-

Explore further sources of funding to provide increased opportunities for us to carry out our charitable aims.

Grow into the new governance structure of our charity, following the amendment of our Constitution to become a Charitable Incorporated Organisation under the Foundation Model, with the new operating name of **BAAS, Befriending & Adult Autism Support**.

Expand the support we offer through the befriending service and welfare benefits advocacy into Bury.

Develop our offer of employment support to autistic adults, working closely alongside our colleagues at Bolton Work Well.

Deliver our Autism Awareness training package to a greater number of external organisations.

STRUCTURE, GOVERNANCE & MANAGEMENT

Organisational Structure

Bolton Adult Autism Support is a registered charity. We are governed by our Constitution. The governing documents instruct the Trustees to act in a way to promote the objects of the charity. The Service Manager is the Designated Safeguarding Lead and the Safeguarding Policy is attached with this report.

Trustees are committed to providing a secure environment for the vulnerable beneficiaries of our service. Staff are DBS checked and receive relevant training on safeguarding procedures.

Decision Making

The board of Trustees delegate the day-to-day operational running of BAAS to the Service Manager and relevant staff.

Trustee Management

Trustee vacancies are advertised publicly and applicants are invited to contact the Chair of Trustees for an informal conversation before applying. Once an application is submitted, following a meeting with the Chair Person and approval from the board they will be invited to attend a meeting. Their formal appointment as either a trustee or co-opted member will be voted on at the next trustee meeting.

Those appointed as a Trustee during the year will have to stand down at the AGM and be formally appointed by members.

Trustee Induction & Training

Once appointed, Trustees will be issued with a welcome pack including their responsibilities as a Trustee and a role description. They will get a tour of the organisation, an overview of services delivered and meet the staff team. They will be allocated a 'buddy' Trustee who will oversee their induction. The Chair Person will make arrangements to support any identified training needs and will be available to discuss the role as required.

Remuneration

The board of Trustees along with the Service Manager, are responsible for directing, controlling, running and operating the charity on a daily basis. All Trustees give their time freely, any expenses related to the duties carried out by Trustees and related party transactions are listed in the notes to the accounts. In this reporting period, no Trustee received remuneration, there were no Trustee expenses or related party transactions. Staff pay is set and reviewed by Trustees, taking advice from external sources.

Trustees' responsibilities in relation to the financial statements.

The Charity Trustees are responsible for preparing a Trustees Annual Report and financial statements in accordance with applicable law and United Kingdom Accounting Standards (United Kingdom Generally Accepted Accounting Practice).

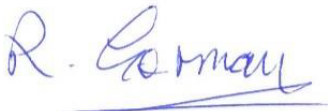
The law applicable to Charities in England and Wales requires Trustees to prepare financial statements for each financial year which give a true and fair view of the state of affairs of the Charity and of the incoming resources and application of resources of the Charity for that period. In preparing the financial statements the Trustees are required to:

- Select suitable accounting policies and then apply them consistently.
- Observe the methods and principles in the applicable Charities SORP.
- Make judgements and estimates that are reasonable and prudent.
- State whether applicable accounting standards have been followed subject to any material departures disclosed in the financial statements, and
- Prepare the financial statements on the going concern basis unless it is inappropriate to presume that the charity will continue in operation.

The Trustees are responsible for keeping proper accounting records which disclose with reasonable accuracy at any time the financial position of the Charity and to enable them to ensure that the financial statements comply with the Charities Act 2016 the applicable Charities (Accounts and Reports) Regulations, and the provisions of the Trust Deed. The Trustees are also responsible for safeguarding the assets of the Charity and for taking reasonable steps for the prevention and detection of fraud and other irregularities.

Approval

The report was approved by the Trustees on 26th of February 2026 and is signed on their behalf by



Signed

Chair

Date

26th February 2026

Bolton Adult Autism Support

Independent Examiner's Report

To the Trustees of Bolton Adult Autism Support

I have examined the accounts of Bolton Adult Autism Support for the 14 months ended 31st December 2025 which comprise the Statement of Financial Activities, Balance Sheet, and related notes. These accounts have been prepared in accordance with the accounting policies set out in Note 1 to the accounts.

Respective Responsibilities of Trustees and Examiner

The charity's trustees are responsible for the preparation of the accounts in accordance with the requirements of the Charities Act 2011 ('the Act') and for being satisfied that the accounts give a true and fair view.

I report in respect of my examination of the charity's accounts carried out under section 145 of the Act and in carrying out my examination I have followed all the applicable Directions given by the Charity Commission under section 145(5)(b) of the Act.

Basis of Opinion

My examination was conducted in accordance with the Directions of the Charity Commission for England and Wales and in compliance with the Code of Practice on the Examination of Charities' Accounts. An examination includes a review of the accounting records kept by the charity and a comparison of the accounts presented with those records. It also includes consideration of any unusual items or disclosures in the accounts and seeking explanations from trustees concerning any such matters. The procedures undertaken do not provide all the evidence that would be required in an audit and consequently, I do not express an audit opinion on the accounts.

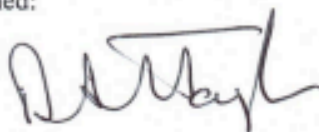
Opinion

I have completed my examination. I have no concerns and have come across no other matters in connection with the examination to which attention should be drawn in this report in order to enable a proper understanding of the accounts to be reached.

Matters on which I am required to report by exception

I have no concerns and have come across no other matters in connection with the examination to which attention should be drawn in this report in order to enable a proper understanding of the accounts to be reached.

Signed:



David Taylor
Senior Statutory Auditor

30 March 2026

Harts Ltd, Westminster House, 10 Westminster Road, Macclesfield, Cheshire SK12 1BX

Bolton Adult Autism Support

Statement of Financial Activities for the 14 months ended 31st December 2025

Receipts & Payments Accounts				2025			2024
	Notes	Unrestricted	Restricted	Total	Unrestricted	Restricted	Total
	£	£	£	£	£	£	£
Income							
Charitable Grants	5	61,849	47,076	108,925	5,126	63,507	68,633
Donations & Fundraising	6	5,934	-	5,934	3,159	-	3,159
Bank Interest Received	7	832	-	832	93	-	93
Total Income		68,615	47,076	115,691	8,378	63,507	71,885
Expenditure							
Charitable Activities	8	15,473	41,991	57,464	839	32,862	33,701
Administrative Expenses	9	13,521	24,227	37,748	5,205	31,899	37,104
Governance Costs	10	900	-	900	-	2,275	2,275
Total Expenditure		29,894	66,218	96,112	6,044	67,036	73,080
Transfer		(180)	180	-	(79)	79	-
Surplus of Income Over Expenditure		38,541	(18,962)	19,579	2,225	(3,450)	(1,195}
Balances brought forward		22,303	32,030	54,333	20,049	35,480	55,529
Balances carried forward		60,844	13,068	73,912	22,303	32,030	54,333

The Statement of Financial Activities includes all gains and losses recognised in the year.
 All income and expenditure derive from continuing activities.
 The notes on pages 26 to 33 form an integral part of these accounts.

Balance Sheet at 31st December 2025

	Notes	2025		2024
		£		£
Current Assets				
Prepayment	13	608		
Bank deposit account		40,905		30,093
Bank current account		32,426		25,979
Petty Cash		8		130
Total Current Assets		73,947		56,072
Current Liabilities				
Creditors	14	(2,035)		(1,738)
Net Current Assets		71,912		54,333
Rent Deposit		2,000		-
Total Assets		73,912		54,333
Represented By				
Unrestricted Funds - general	15	60,844		22,303
Restricted Funds	15	13,068		32,030
Total Funds		73,912		54,333

Signed



Roselle Gorman

Chair

Date 26 February 2026

Ralph Ellerton

Treasurer



All incoming resources are included in the Statement of Financial Activities (SoFA) when the charity is legally entitled to the income after any performance conditions have been met, the amount can be measured reliably, and it is probable that the income will be received.

Notes to the financial statements continued

For donations to be recognised the charity will have been notified of the amounts and the settlement date in writing. If there are conditions attached to the donation and this requires a level of performance before entitlement can be obtained, then income is deferred until these conditions are fully met or the fulfilment of those conditions is within the control of the charity and it is probable that they will be fulfilled.

No amount is included in the financial statements for volunteer time in line with the SORP.

1.5 Expenditure

All expenditure is accounted on an accruals basis and has been classified under headings that aggregate all costs related to the category. Expenditure is recognised where there is a legal or constructive obligation to make payments to third parties, it is probable that the settlement will be required and the amount of the obligation can be measured reliably.

Operating leases

Rentals payable under operating leases are expensed as expenditure is incurred.

Costs are defined as follows:

Charitable expenditure

The costs delivering the charitable activities.

All costs are allocated between expenditure categories of the SoFA on a basis designed to reflect the use of resources. Costs relating to a particular activity are allocated directly and other costs (support costs) are allocated on an appropriate basis to reflect the usage of resources, in line with the Trustees' estimate of core staff time spent on the activities.

Administrative expenses

These are costs associated with the operation of the office, staff and volunteer recruitment.

Governance costs

Expenditure on the independent verification of the accounts and Trustee meetings.

The charity is not registered VAT and therefore all its input tax is irrecoverable. Expenditure is analysed inclusive of VAT where this has been incurred.

1.6 Tangible fixed assets

Assets costing less than £500 and not forming part of a related series are not capitalised but written off to revenue in the year of acquisition. Fixed assets that are funded by grants are expensed when the assets are acquired in the year of acquisition.

Notes to the financial statements continued

1.7 Cash and cash equivalents

Cash and cash equivalents include cash in hand, deposits held at call with and amounts held in bank current accounts.

2. Critical accounting estimates and judgements.

In the application of the charity's accounting policies the Trustees are required to make judgments, estimates and assumptions about the carrying amount of assets and liabilities that are not readily apparent from other sources.

The estimates and associated assumptions are based on historical experience and other factors that are considered to be relevant. Actual results may differ from these estimates.

3. Taxation

The charity is an exempt charity within the meaning of schedule 3 of the Charities Act 2011 and is considered to pass the tests set out in paragraph 1 Schedule 6 of the Finance Act 2010 and therefore it meets the definition of a charitable organisation for UK corporation tax purposes

4. Debtors/creditors receivable/payable within one year

Debtors and creditors with no stated interest rate and receivable or payable within one year are recorded at transaction price. Any losses arising from impairment are recognised in expenditure

Notes to the financial statements continued

5. Charitable Grants Received

	2025	2024
	£	£
Restricted Income		
National Lottery RC	24,076	35,408
National Lottery AWA	-	20,000
CRH Charitable Trust	13,000	-
Bolton Fund	5,000	5,000
Charity Services Grant	3,000	3,000
Bolton Carers Fund	2,000	
Bolton Xmas Fund	-	99
Total Restricted	47,076	63,507
Unrestricted Income		
Lloyds Bank	25,000	-
Postcode Neighborhood Trust	23,500	
Peter Kershaw Trust	3,749	-
Sir James & Lady Bolton	4,000	3,000
Stagecoach	2,500	-
Skipton Building Society	1,500	-
Morrison's	1,000	
ASDA	600	626
Eric Wright	-	1,000
People's Postcode Lottery	-	500
Total Unrestricted	61,849	5,126

6. Donations, Fundraising and gifts received

	2025	2024
	£	£
Fund raising and donations received	5,654	3,159
University of Greater Manchester	150	-
Membership	130	-
Total	5,934	3,159

7. Interest received

	2025	2024
	£	£
Deposit Account	832	93

Notes to the financial statements continued

8. Analysis of expenditure on charitable activities

	Unrestricted	Restricted	Total 2025	Total 2024
	£	£	£	£
Staff costs	12,762	39,966	52,728	31,287
Event costs	1,523	851	2,374	653
Volunteer expenses	1,188	1,174	2,362	1,761
Total	15,473	41,991	57,464	33,701

9. Administrative Costs

	Unrestricted	Restricted	Total 2025	Total 2024
	£	£	£	£
Staff costs	4,755	12,033	16,788	13,891
Building running costs	6,210	7,278	13,488	7,619
Legal costs	-	-	-	4,415
Office costs	2,447	1,950	4,396	5,098
IT & Software	39	1,372	1,411	5,200
Insurance & payroll costs	50	1,104	1,154	781
Advertising & Marketing	-	410	410	20
Website	20	80	100	80
Total	13,521	24,227	37,747	37,104

10. Governance Costs

	Unrestricted	Restricted	2025	Restricted	2024
	£	£	£	£	£
Independent Accountants fee	900	-	900	2,160	2,160
Meeting expenses	-	-	-	115	115
Total	900	-	900	2,275	2,275

Notes to the financial statements continued

11. Employees

The average number of employees during the period was

	2025	2024
Operations Manager	1	1
Service Delivery	3	2
Administration	2	1
Total	6	4
Staff Salaries	£68,429	£44,347
Pension Costs	£1,087	£831

There were no employees whose annual remuneration was more than £60,000 in the period to 31st December 2025 or the previous 12 month period.

The remuneration of key management personnel was £25,982, as adjusted for the equivalent 12 month period (2024 £25,000)

No Trustee received either remuneration or reimbursed expenses in either period.

No related party transactions have been reported to the Board of Trustees.

No grants have been received from UK Government sources.

Notes to the financial statements continued

12. Analysis of Charitable funds

Restricted Funds	As at 1st November 2024 Brought Forward	Income	Expenditure	Transfers	As at 31st December 2025
	£	£	£	£	£
National Lottery RC	14,064	24,076	(35,063)	(604)	2,473
CRH	-	13,000	(9,293)		3,707
Bolton Fund	-	5,000	(859)	-	4,141
Charity Services Grant	2,299	3,000	(5,299)	-	-
Bolton Fund Carers	-	2,000	(213)	-	1,787
National Lottery AWA	11,715	-	(12,319)	604	-
Bolton Fund	2,412	-	(2,494)	82	-
CRH Grant	1,540	-	(580)	-	960
East Lancs Masonic Charity	-	-	(98)	98	-
Restricted Funds	<u>32,030</u>	<u>47,076</u>	<u>(66,218)</u>	<u>180</u>	<u>13,068</u>
Unrestricted Funds					
General	<u>22,303</u>	<u>61,849</u>	<u>(29,894)</u>	<u>(180)</u>	<u>54,078</u>
Total	<u>54,333</u>	<u>108,925</u>	<u>(96,112)</u>	=	<u>67,146</u>

Notes to the financial statements continued

13. Debtors	2025 £	2024 £
Due from successor CIO	608	-
Rent deposit	2,000	-
Total	2,608	-

14. Creditors	2025 £	2024 £
PAYE due	-	369
Pension due	218	169
Credit Card	737	-
Accrued expenses	1080	1,200
Total	2,035	1,738

15. Funds Analysis		2025			2024	
	Unrestricted £	Restricted £	Total £	Unrestricted £	Restricted £	Total £
Current Assets	60,844	13,068	73,912	22,303	32,030	54,333

16. Non-Cancellable Operating Lease	2025 £	2024 £
Within one year	11,048	9,080
Between one and five years	11,960	11,048
After five years	-	-

17. Subsequent events

On 25th September 2025 Trustees passed a resolution to create a Charity Incorporated Organization named Befriending & Adult Autism Support, to take over the operation of Bolton Adult Autism Support. The new charity was registered with the Charity Commission on 19th November 2025 with the number 1215829.

The new charity commenced operations on 1st January 2026 and will acquire the net assets and the office lease of the existing charity from that date. It is estimated that the net assets will be £73,912.

BOLTON ADULT AUTISM SUPPORT

England & Wales - Charity number 1162560

Accounts



Trustees' Annual Report and Financial Statements for the Year Ended 31st October 2024



Registered Charity No: 1162560



Legal and Administrative Information

Bolton Adult Autism Support is a registered charity No: 1162560
The principal office and registered address is
1st Floor, Nelson House, Nelson Square, Bolton, BL1 1JT

GOVERNING DOCUMENT	Constitution
TRUSTEE BOARD	
Honorary Chair	Roselle Gorman
Honorary Vice-Chair	Anita Powley
Honorary Treasurer	Ralph Ellerton, FCA
Honorary Secretary	Sara Kehoe
Other Trustees	Michelle Grogan Paul Ward
Co-Opted Trustees	Paul Aldred Sophie Gastall Rachel Bartlett
Management	Vicky Kenyon, Service Manager
Independent Examiners	Harts Ltd; Westminster House, 10 Westminster Road, Macclesfield, SK12 1BX
Bankers	Lloyds Bank Plc; 25 Gresham Street, London, EC2V 7HN

WHO WE ARE

Bolton Adult Autism Support (BAAS) is an award winning grassroots charity based in Bolton supporting Autistic Adults and their Carers

Our Vision

A society that accepts, involves and understands autistic people. Where all autistic adults and their carers feel they belong.



Our Values go **ACROSS** the Autistic Spectrum:-

- Acceptance
- Connection
- Respect
- Openness
- Sensitivity
- Support

HIGHLIGHTS

● A Year of Expansion

This year has been one of huge progress for BAAS. The uplift in funding received from the National Lottery Reaching Communities Fund in August 2023 was the beginning of our expansion, giving us confidence as a very small charity with one part-time employee to branch out, apply for further funding, employ more staff, procure larger office space and increase our existing service delivery projects.

From 1st June to 31st October we have welcomed and supported 273 visitors to our new office premises!!

● Staff

- As a small charity, all BAAS staff are employed on part-time contracts, however, we have been thrilled to extend our staff team over the last reporting year!
- Our Service Manager increased her working hours to four days per week. Although not all BAAS projects are directly funded by National Lottery Reaching Communities Fund, our Service Manager oversees all service delivery and it is thanks to the uplift in funding that we have been able to not only increase her working hours for the benefit of BAAS as a whole, but also to employ a dedicated Volunteer Coordinator to manage Volunteer recruitment, as well as coordinate our extremely valued Befriending Service.
- Additionally we have employed an Outreach Coordinator to facilitate our weekly group Social and Life Skills Events.
- We have also employed a Welfare Benefits Adviser to assist with welfare benefits advocacy; a Training Facilitator to deliver our training programme to Volunteers and external organisations; and a Junior Administrator to support the Operational Team.

HIGHLIGHTS

● Measuring Our Impact

- With the recruitment of new staff, since 1st November 2023 we have started logging all of our service beneficiary contacts, giving us a much more accurate picture of the charity's work
- In August 2024 we implemented Charity Log, in order to enhance our recording systems, streamline reporting, cut down on admin time and free our staff to focus more on direct service delivery.

● Increased Statistics

- There has been a **116%** increase in attendance at group events compared to the whole of 2022/23.
- There has been a **350%** increase from 6 cases to **27** in the number of welfare benefits issues we have supported, and we have achieved a **100% success rate** for all those we have supported to access disability benefits, from first application through to First Tier Tribunal Appeals!
- We have diversified the range of voluntary roles on offer at BAAS, to reflect the additional projects and staff available to support our wonderful volunteers, and have recorded our highest ever number of volunteer roles facilitated in one reporting year!
- Our Volunteer Recruitment has been larger than ever before with **26** volunteers joining the charity this year to assist us in our work.
- BAAS now supports **156 Autistic Adults and 62 Carers** through one, or more than one, of our Service Delivery Projects!

ACHIEVEMENTS & PERFORMANCE

6 Student Work Placements supported

431 attendances across 43 Social & Life Skills Sessions

34 Training Modules Delivered

28 Voluntary roles facilitated

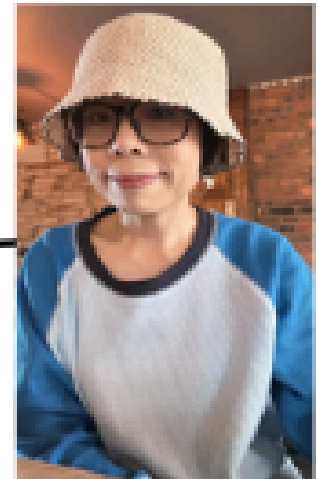
"I enjoy the cooking skills sessions as I'm learning new skills and get to try what I've made. It makes me feel proud of myself and also proud of my peers that they are also learning and giving new foods a try."

Joe, July 2024



"I've volunteered since March 2023 and find this a really rewarding experience. My befriender has become confident in social situations, 2 hours a week does more than expected."

Sheena, May 2024

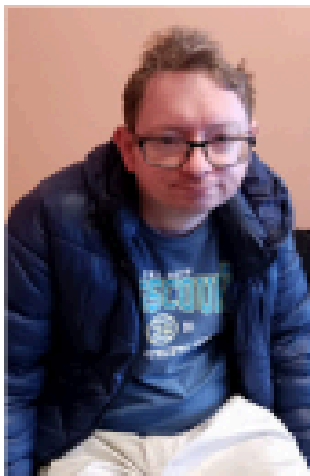


14 Befriending relationships supported

37 attendances at 5 Carers Only Sessions

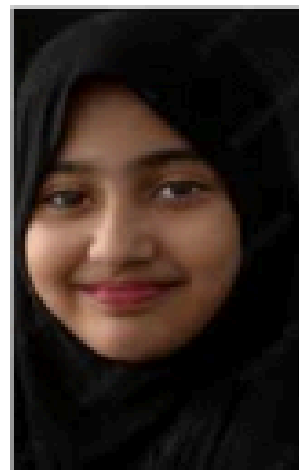
£198,235 In Service Beneficiary welfare benefit entitlement

552 hours of Voluntary Work undertaken



"I look forward to seeing my Befriender every week because we can share interests and activities and we are on the same wavelength."

Tommy, May 2024



"It made such a difference to have someone who not only helped me win my PIP appeal, but who also made me feel understood. I didn't really have that in my life before."

Amida, June 2024

BEFRIENDING SERVICE

Our Autism Specific Adult Focused Befriending Service continues to be an extremely valuable resource in Bolton, meeting the needs of Autistic Adults who require a more bespoke level of support. Together with the direct beneficiaries of the Befriending Service, this Service also benefits Carers whose loved ones are thriving, as well as our fantastic Volunteers who achieve great job satisfaction from their voluntary work.

The popularity of the Befriending Service has, however, resulted in there being an extended waiting list for Service Beneficiaries seeking this support, as the demand has outstripped the rate of Volunteer recruitment.

In October 2023 we employed a Befriending Service Coordinator, to join the BAAS team. After completing their probationary period however, our Befriending Service Coordinator decided that the job wasn't the right one for them. Although we were really sorry to lose them, we're absolutely delighted that they have remained involved with BAAS, and are now serving on our Board as one of our wonderful Trustees!

Recruitment started again, and at exactly halfway through this reporting year, in April 2024 we employed a dedicated Volunteer Coordinator to support both Volunteers and Service Beneficiaries. Our Volunteer Coordinator has been a fantastic addition, and following their efforts we have recorded our most successful year of Volunteer Recruitment to date!

The change in personnel has meant, however, that the majority of our volunteer recruitment has come in the latter part of this reporting year, and has been something we have been focussed on building, especially for our Befriending Service. We have continued to be heartened by witnessing the positive impact the beneficial support of Volunteers has had on all our Service Beneficiaries, but especially those who take part in the Befriending Service and Social & Life Skills Activities program.

Quarter 1
2
Befrienders
Recruited

Quarter 2
3
Befrienders
Recruited

Quarter 3
3
Befrienders
Recruited

Quarter 4
6
Befrienders
Recruited

BEFRIENDING SERVICE - IMPACT

BAAS have supported **14** Befriending Relationships within the last reporting year, with one of our wonderful Volunteers reaching **100 hours** of direct Befriending Voluntary work!

The Impact of the Befriending Service continues to be a really beneficial one for those engaged in Befriending Matches. After completion of Wellbeing Assessments we have found the following:-

Service Beneficiary overall life satisfaction levels at the start of a Befriending Relationship were an average of 28%.

After just 6 months of engagement with a Volunteer Befriender, these life satisfaction levels had risen to 40%.

In August we matched our Volunteer Darren with one of our Service Beneficiaries Mikey. Darren, Mikey and Mikey's mum, Dawn, have the following to say about the time they have been enjoying as part of a Befriending Relationship.

I like going out with my Befriender each week, and finding new places to go with them. I wouldn't otherwise do that if I was just on my own.

Mikey

What a great job Darren is doing with Mikey. They seem to be getting along and Mikey is really enjoying it, so thank you very much for organising.

Dawn

I enjoy being a Befriender because I didn't get support myself in the past, so I know how important it is. I enjoy seeing my Befriender becoming more confident. We enjoy experiencing new things, like tabletop gaming, snooker & crazy golf.

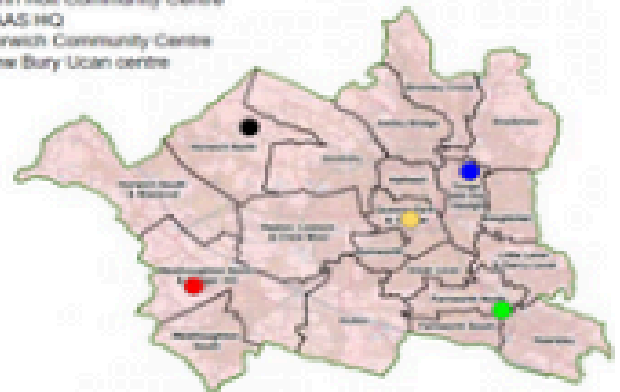
Darren

COMMUNITY PRESENCE

- Our weekly group events situated in various locations throughout the borough have increased our foothold in Bolton, helping BAAS to become an even more widely recognised provider of autistic adult and carer support.
- With more staff we have been able to attend a wider number of community events, and therefore reach and help a greater number of Service Beneficiaries.
- Our new office in a prominent town centre location has cemented our presence in Bolton, making us even more recognisable for those we support.
- We have delivered our Autism Awareness Training to partner organisations, increasing their understanding of the best ways to support autistic adults.
- We continue to be a recognised work placement provider for students from local educational establishments, including Bolton College, Bolton University and Manchester Metropolitan University.

Our Borough Locations

- Thickstall Centre
- John Holt Community Centre
- BAAS HQ
- Horwich Community Centre
- New Bury Uoah centre



Improved Wellbeing

In July 2024 we compared data from October 2023 with attendees of our weekly Social & Life Skills Sessions

100% of those surveyed experienced increased wellbeing

There was a 37% Increase in overall life satisfaction levels

Confidence levels of autistic adults rose by 36%

38% reported Improvement in relationships with others

People felt their social skills had improved by 38%

Those surveyed reported a 27% improvement in their life skills

With a 39% Increase in people feeling they spend time more productively

Scoring for both health & independence was around a 17% Increase

NEW INTERESTS & HOBBIES

Thanks to funding from CRH Charitable Trust we have been able to give our Service Beneficiaries new experiences with a view to enriching their lives, we have introduced a wide selection of craft activities at our Social & Life Skills Events. We know that trying new things can sometimes be challenging for those on the autistic spectrum, but by facilitating these sessions in a relaxed group atmosphere, we have found our Service Beneficiaries to be very enthusiastic about the different activities on offer.

What we feel most proud of, however, is the involvement of Service Beneficiaries in both the design of the Arts & Crafts Program, and how they have shared their own interests by leading some of the sessions themselves, sharing their talents with the rest of the group!

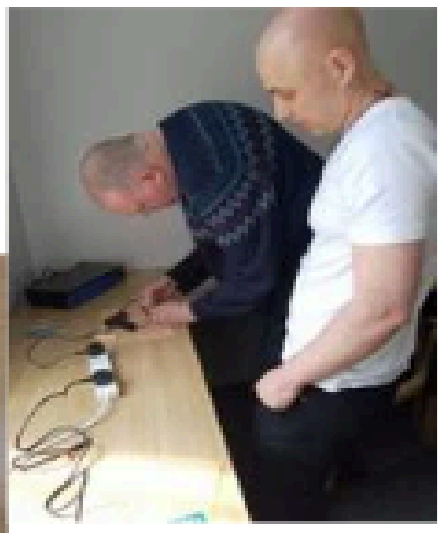
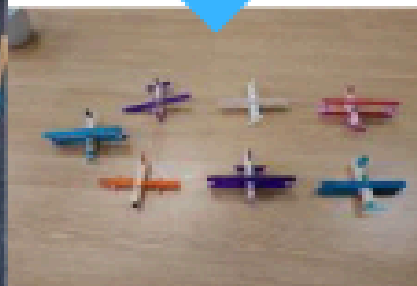
Hobbies at BAAS



NEEDLE FELTING
Facilitated by
Jasmine



PEG PLANES
Facilitated by
Barry



LIFE SKILLS

When it comes to preparing and cooking healthy meals independently, challenges with executive functioning, anxiety and a lack of confidence can have a significant impact on autistic adults.

Not only do we aim to increase the skills our service beneficiaries have in the kitchen for their overall health, but also for their financial wellbeing.

With this in mind, we aim to help them budget for cost-effective meal preparation. We do this by facilitating regular cooking skills sessions, helping autistic adults to gain confidence and learn in the kitchen. After each session we provide all attendees with a shopping list and basic recipe card to encourage them to recreate newly learned dishes at home.

Our Outreach Coordinator obtained a Level 2 Food Hygiene & Safety Certificate in January 2024, and has so far facilitated **14 Cooking Skills Sessions**.

Cooking at BAAS



Spaghetti & Meatballs



**Summer Cous
Cous Salad**



**Veggie Filled
Omelette**



**Corned Beef
Hash**

A SERVICE BENEFICIARY'S VOICE

"My first encounter with BAAS was when I attended a social activities and life skills group.

Everyone made me feel welcome without overwhelming me.

The cooking that day was pumpkin soup - as it was about the time of Halloween 🎃 I'd never made this before...it was fun...very much watching and learning my first time in the kitchen. We made enough for each of the group to have a bowl, sharing in this way was heartwarming in itself!!

Gradually, a bit at a time, I joined in the games. Triominos was one. As I felt included in the group, I began to join in the conversations.

During the cooking sessions, not only did I learn how to prepare and cook new recipes - but also I learnt about things I could buy that I never knew existed e.g chilli noodles.



I tend to need a lot of quiet time. The craft sessions held at BAAS gave me a new way of being quiet. Now I use some of my quiet time crafting. Service beneficiaries share skills in these groups e.g. I've taught how to crochet, and learnt new ways of crafting e.g. needle felting. It's a time when we can all learn, share and help each other."

Dina, August 2024

WELFARE BENEFITS ADVOCACY

A Case Study

*Charlie lives alone and has a diagnosis of autism, a moderate learning disability and PTSD. Despite having previously being in receipt of Personal Independence Payments (PIP) Charlie had been awarded 0 points when it came time for her claim to be reassessed. Charlie's Mum, Laura, had submitted a Mandatory Reconsideration on Charlie's behalf, but again Charlie was assessed as not meeting the criteria to score any points which would entitle her to PIP. It was at this point that Charlie and Laura came to BAAS seeking help. Through BAAS Charlie was supported to submit a written Appeal to the First Tier Tribunal Service, and was also represented by BAAS at the Tribunal Hearing. Following our support, Charlie's PIP was not only reinstated, but she was awarded the enhanced rate for both the Daily Living and Mobility components, and the award given to Charlie was made for a period of 10 years - **the maximum award possible!***

With a background in welfare benefits delivery at Citizens Advice and funding from the National Lottery Awards for All, our Service Manager has recruited and trained a dedicated Welfare Benefits Adviser to provide support to Autistic Adults and their Carers, enabling them to achieve the ongoing disability welfare benefits they are entitled to.

Throughout this reporting year, **25 individuals** have been supported in either the application or appeal of **27 welfare benefits issues**.

100% of those supported who have already received their decision have achieved an award of a disability benefit, from first application through to First Tier Tribunal Appeals!

£132,787 confirmed welfare benefit entitlement has already been awarded, with a further **£65,449** projected benefit entitlement expected - an overall financial benefit of **£198,235!**

GENERAL ADVOCACY

As well as assisting people with welfare benefits advocacy, we also, where we can, help people with other issues they may need support with, such as applying for a disability bus pass or housing issues. In January we assisted Janet to have her autism diagnosis recognised as a medical issue, in order to increase her housing band, so she could apply for suitable housing. Janet said the following about the support she received:-

"I am autistic and diagnosed with a type of blood cancer. I had been up against it with my health deteriorating and terrible anti social behaviour from neighbours in my private rented property, which I was also struggling to afford. I was so overwhelmed I was finding it hard to go on with little or no help. I experience executive dysfunction, and this was now the worst it has ever been as I froze against the obstacles I was facing.

I spent 2 years chasing the authorities for a resolution, but my council's housing department would not recognise my medical needs as an autistic person.

I tried to ask for help but had many doors shut to me because I wasn't in the right area, and sadly found that there is no support available in my Greater Manchester borough for this sort of problem.

Having appealed to BAAS, I received a reply with an offer of help, even though I was out of the catchment area. They wrote to the responsible people in the council and helped me where I wasn't able to act, they listened to me and were able to replicate my situation in an appeal with incredible accuracy. BAAS achieved the clarity I was unable to because of the state I was in. This caused the situation to start moving, but also, more importantly, it empowered me to act and be more assertive. I was placed in Band 2 and for the first time my medical needs were recognised for rehousing, when previously they had been ignored.

I cannot thank BAAS enough for their help and also for their empathy, understanding and kindness.

I read somewhere that "we are only as disabled as our environment makes us," and right now neurodivergents are having to jump through extra hoops to achieve this enablement and recognition of an invisible disability."

RETURNING TO OUR ROOTS

Carers Only Sessions

With increased capacity to offer our services, we have been able to return to our Charity's roots with the reintroduction of monthly Carers Only Sessions, headed by our Chair, Roselle Gorman. These sessions have been really well attended and give our carers a space to share experiences and talk with others who understand the unique highs and lows of caring for an adult on the autistic spectrum.



Day Trips

In December 2023 we visited Bents Garden Centre to enjoy the wonderful Christmas displays on offer.

In July 2024 we enjoyed a day trip to Lancaster, where we had a private guided tour of Lancaster Castle, a group lunch and time to enjoy the historic city centre.

Both day trips were well attended by autistic adults and carers alike, and everyone had a great time!



VOLUNTEERING AT BAAS



Student Work Placement Provider

"My placement experience at BAAS was one I will cherish. The team were so welcoming and their hard work and dedication was evident. BAAS do some amazing work within the community and truly have a positive impact on the lives of others".

Naomi, Psychology Professional Practice Masters Student
Manchester Metropolitan University, June 2024

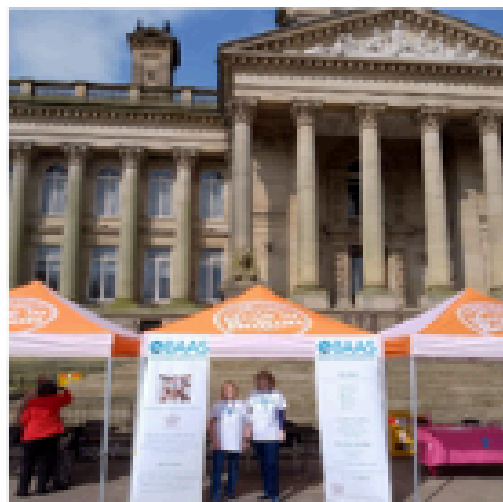
I have been a Befriender for almost a year with BAAS. I have really enjoyed getting to know my Befriender over the past year, we have both gained a lot from the Befriending and I look forward to upcoming exciting befriending trips planned! I am super proud to be a part of the BAAS team and it has been such a positive experience.

Rosie, July 2024

Volunteers Week 2024 Bolton CVS Fair

We teamed up with our friends at Bolton CVS to host a stall at their Volunteer's Fair marking the start of Volunteer's Week 2024. It was fantastic to have so many conversations with Bolton residents!

We even managed to recruit 1 of our wonderful Befriending Volunteers!



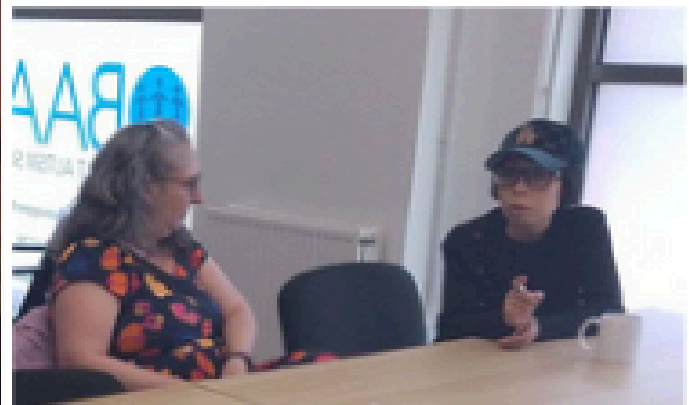
VOLUNTEER HIGHLIGHTS

Recruitment

- All our volunteer interviews are now carried out by our Volunteer Coordinator, and a Service Beneficiary who has been part of a befriending relationship. Having this extra dynamic has enriched the recruitment process, not only for the Charity, but also for the interviewees and helps them to prepare for their new role.
- A Service Beneficiary has for the first time progressed to the role of Volunteer Befriender, after they themselves have benefited from the Befriending Service.
- We have introduced the role of Social Activities Volunteer, giving our Volunteers more choice in how they contribute their time.
- Our Introduction to Autism training module, delivered to all our Volunteers, is now facilitated by an autistic staff member. This not only enriches the training experience for our volunteers, but also adheres to the Greater Manchester Autism Training Standards.
- During the last reporting year, we have recruited **14** Befriending Volunteers, **3** Social Activity Volunteers, **2** Fundraising Volunteers, **1** Admin Volunteer and **6** Student Work Placements.
- Along with Volunteers who have remained with us from the previous reporting year, there are currently **18** wonderful people actively engaged in voluntary roles at BAAS!

Events

We made the most of our new premises by hosting our very first **Volunteer's Week Coffee and Cake Morning**. Giving our volunteers a chance to meet others, and share our appreciation for their efforts.



TRAINING DELIVERY

At BAAS we don't only train our staff and volunteers in Autism Awareness, but also deliver our sessions to external organisations to improve their understanding of autism and to enhance the services they deliver to those on the autistic spectrum and their carers.

We are really pleased to receive positive feedback from some of the external organisations with whom we have collaborated.

The session went really well and was pitched at just the right level

Lisa, Chief Officer
Citizens Advice Wigan
Borough

I felt the training information delivered was 100% credible, as the trainer was autistic themselves

Sarah, Support
Worker, Lifeways

I thought I knew a lot about autism but this course has taught me some new things

Jill, Team Leader
Lifeways

100% of those who took part in our Autism Awareness training would recommend our training program to another organisation.

As well as Autism Awareness Training, we also continue to deliver modules in Befriending and Adult Safeguarding and Confidentiality to all our Volunteers, to better prepare them for their roles.

In this reporting year we have delivered **34** training sessions!

FUNDING

We're so grateful to our funders whose support and generosity allows us to meet the needs of Bolton's autistic adults and their carers.

Our multi-year grant from the National Lottery Reaching Communities Fund, for which we also received an uplift last year, has allowed us to increase our personnel and continue to deliver our Befriending Service and reintroduce Carer's Only Support.

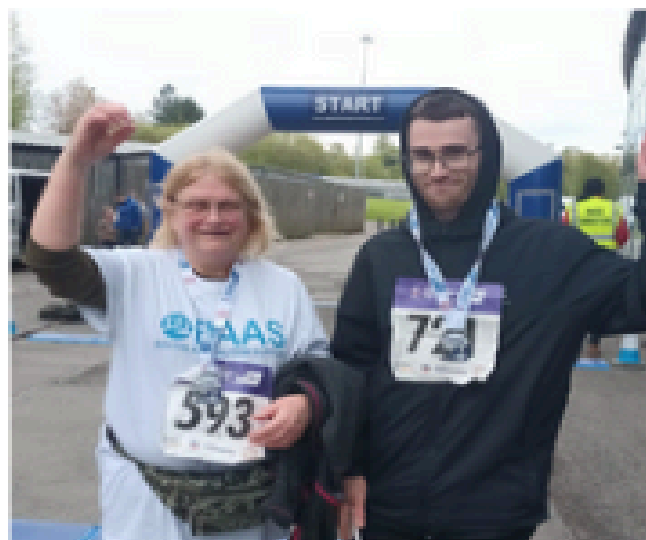
We have also received a grant from the National Lottery Awards for All Fund to deliver our Training Programme and Welfare Benefits Advocacy.

Funding received from CRH Charitable Trust at the end of the last financial year enabled us to run our really successful Social & Life Skills Events Program.

A multi-year grant from the Charity Service Grant has provided security and allowed us to have confidence in procuring larger office space. We have also received grants from both The Bolton Fund and The Sir James and Lady Scott Trust to help us meet the increased rent payments and utility bills.

Unrestricted Funding from The People's Postcode Lottery, Asda, Eric Wright Charitable Foundation, and Aviva match funding for our Crowdfunder has also helped us meet our other overheads, along with the support we've received from our local community in the form of charitable donations.

To all our funders and supporters we wish to extend a very warm and heartfelt **THANK YOU!!**



Service Beneficiaries raising funds on behalf of BAAS by undertaking Bolton's Community 10K!!

FUTURE PLANS

We're really proud at BAAS to have an ethos of total inclusion, and this is something we're determined to continue with as we grow and prosper further.

60% of our staff are Neurodiverse.

Having Co-opted additional Trustees throughout this year, 66% of our Board of Trustees are now also Neurodiverse.

Having decision makers who are from the very demographics we seek to support is integral to our approach. As we move forward into our next chapter, we will continue to harness this strength within the organisation, listening to autistic adults and carers, to ensure we reach and support even more adults whose lives have been touched by autism.

Our Plans

Over the next 12 months we plan to do the following:-

Continue to build on our existing voluntary workforce to facilitate even more befriending relationships, so that individualised support can be offered in greater numbers.

Continue to build on the group support sessions on offer at BAAS, for both Autistic Adults and Carers.

Continue to increase our welfare benefits advocacy, helping autistic adults and their carers to achieve the correct benefit entitlement. We will also deliver welfare benefits training to those who have capacity to manage their own benefit claims when equipped with the knowledge to do so.

Deliver our Autism Awareness training package to greater numbers of external organisations.

We are awaiting the outcome from our application to be awarded Bolton's Volunteer Charter, and once this has been finalised we will prioritise working towards achieving The Bolton Mark with Bolton

Bolton Adult Autism Support Trustees' Annual Report for the Year Ended 31st October 2024

Structure, Governance and management

The Charity is governed by its Constitution, adopted on 26 th November 2014, as amended on 30 th November 2016.

It is a registered charity, as defined by the Charities Act 2005.

Trustees are volunteers from the local community, chosen for their particular skills relative to the objects of the Charity.

The officers meet on a regular basis to progress the objects of the Charity.

Objectives and activities

1. To promote and protect the physical and mental health of people with Autism Spectrum Conditions (ASCs), their families and carers in Bolton and the surrounding areas, through the provision of support, education and practical advice, including the relief of poverty and distress.
2. To advance the education of the general public in all areas relating to Autism Spectrum Conditions (ASCs).

Statement of Public Benefit

In planning our activities for the period, we kept in mind the Charity Commission's guidance on public benefit at our Trustee meetings. The main activities are to improve the social connectedness and wellbeing of autistic adults and their carers through group events, life skills sessions and a befriending service, as well as to assist in the application and appeals of disability welfare benefits.

Reserves Policy

The Charity aims to build up unrestricted and cash reserves to enable it to expand its activities both in Bolton and the surrounding area. We aim to hold free cash reserves equivalent to six months operational expenses, currently £30,000.

Structure, governance and management

Organisational structure

Bolton Adult Autism Support is a registered charity. We are governed by our Constitution. The governing documents instruct the Trustees to act in a way to promote the objects of the charity. The Service Manager is the Designated Safeguarding Lead and the Safeguarding Policy is attached with this report.

Decision making

The board of Trustees delegate the day-to-day operational running of BAAS to the Service Manager and relevant staff.

Trustee recruitment

Trustee vacancies are advertised publicly and applicants are invited to contact the Chair of Trustees for an informal conversation before applying. Once an application is submitted, following a meeting with the chairman and approval from the board they will be invited to attend a meeting. Their formal appointment as either a trustee or co-opted member will be voted on at the next trustee meeting.

Those appointed as a Trustee during the year will have to stand down at the AGM and be formally appointed by members.

Trustee induction and training

Once appointed, Trustees will be issued with a welcome pack including their responsibilities as a Trustee and a role description. They will get a tour of the organisation; an overview of services delivered and meet the staff team. They will be allocated a 'buddy' Trustee who will oversee their induction. The Chairman will make arrangements to support any identified training needs and will be available to discuss the role as required.

Remuneration

The board of Trustees along with the Service Manager, are responsible for directing, controlling, running and operating the charity on a daily basis. All Trustees give their time freely, any expenses related to the duties carried out by Trustees and related party transactions are listed in the notes to the accounts. In this reporting period, no Trustee received remuneration, there were no Trustee expenses or related party transactions. Staff pay is set and reviewed by Trustees, taking advice from external sources.

Financial Results

Income in the year was £71,885 (2023 £48,605), the increase due to successful fund raising in anticipation of the increase in staff, moving office and expansion of our services.

Expenditure on Charitable Activities increased from £13,808 to £33,701 due to the expansion in service and events provided to our beneficiaries.

Administrative Expenses at £37,104 (2023 £5,018) recognise the costs associated with the move to larger premises.

Resulting deficit of (£1,195) (2023 surplus £28,225) is divided between Restricted funds deficit (£3,450) (2023 surplus £26,057) and Unrestricted funds surplus £2,255(2023 £2,168). At the year-end the Unrestricted Fund balance is £22,304 (2023 £20,049), the Restricted Fund £32,030(2023 £35,480).

Bolton Adult Autism Support
Trustees' Annual Report for the Year Ended 31st October 2024

Trustees' responsibilities in relation to the Financial Statements

The Charity Trustees are responsible for preparing a Trustees Annual Report and financial statements in accordance with applicable law and United Kingdom Accounting Standards (United Kingdom Generally Accepted Accounting Practice).

The law applicable to Charities in England and Wales requires Trustees to prepare financial statements for each financial year which give a true and fair view of the state of affairs of the Charity and of the incoming resources and application of resources of the Charity for that period. In preparing the financial statements the trustees are required to;

- Select suitable accounting policies and then apply them consistently
- Observe the methods and principles in the applicable Charities SORP
- Make judgements and estimates that are reasonable and prudent
- State whether applicable accounting standards have been followed subject to any material departures disclosed in the financial statements and
- Prepare the financial statements on the going concern basis unless it is inappropriate to presume that the charity will continue in operation

The Trustees are responsible for keeping proper accounting records which disclose with reasonable accuracy at any time the financial position of the Charity and to enable them to ensure that the financial statements comply with the Charities Act 2016 the applicable Charities (Accounts and Reports) Regulations, and the provisions of the Trust Deed. The Trustees are also responsible for safeguarding the assets of the Charity and for taking reasonable steps for the prevention and detection of fraud and other irregularities.

Approval

The report was approved by the Trustees on 13 January 2025 and is signed on their behalf by

Signed



Chair
Roselle Gorman

Date 23.01.2025

Bolton Adult Autism Support
Trustees' Annual Report for the Year Ended 31st October 2024

Independent Examiner's Report

To the Trustees of Bolton Adult Autism Support

I have examined the accounts of Bolton Adult Autism Support for the year ended 31st October 2024 which comprise the Statement of Financial Activities, Balance Sheet, and related notes. These accounts have been prepared in accordance with the accounting policies set out in Note 1 to the accounts.

Respective Responsibilities of Trustees and Examiner

The charity's trustees are responsible for the preparation of the accounts in accordance with the Charities Statement of Recognised Practice and for being satisfied that the accounts give a true and fair view. My responsibility is to examine the accounts in accordance with the Directions given by the Charity Commission for England and Wales and to report my findings to you.

Basis of Opinion

My examination was conducted in accordance with the Directions of the Charity Commission for England and Wales and in compliance with the Code of Practice on the Examination of Charities Accounts. An examination includes a review of the accounting records kept by the charity and a comparison of the accounts presented with those records. It also includes consideration of any unusual items or disclosures in the accounts and seeking explanations from trustees concerning any such matters. The procedures undertaken do not provide all the evidence that would be required in an audit and consequently, I do not express an audit opinion on the accounts.

Matters on which I am required to report by exception:

I have nothing to report in respect of the matters specified by the Directions of the Charity Commission for England and Wales in respect of reporting by exception.



David Taylor
Senior Statutory Auditor

23.01.2025

Harts Limited, Westminster House, 10 Westminster Road, Macclesfield SK12 1BX

Bolton Adult Autism Support
Trustees' Annual Report for the Year Ended 31st October 2024

Bolton Adult Autism Support
Statement of Financial Activities for the Year Ended 31st October 2024

Receipts & Payment Account	Notes	2024			2023		
		Unrestricted	Restricted	Total	Unrestricted	Restricted	Total
		£	£	£	£	£	£
Income							
Charitable Grants	3	5,126	63,507	68,633	2,130	44,883	47,013
Donations & Fundraising	4	3,159	-	3,159	1,592	-	1,592
Bank Interest Received		93		93			
Total Income		8,378	63,507	71,885	3,722	44,883	48,605
Expenditure							
Charitable Activities	5	839	32,862	33,701	-	13,808	13,808
Administrative Activities	6	5,205	31,899	37,104	1,307	5,018	6,415
Governance Costs	7	-	2,275	2,275	157	-	157
Total Expenditure		6,044	67,036	73,080	1,554	18,826	20,380
Transfer		(79)	79				
Surplus of Income over Expenditure		2,255	(3450)	(1,195)	2,168	26,057	28,225
Balances Brought Forward		20,049	35,480	55,529	17,881	9,423	27,304
Balances Carried Forward		22,304	32,030	54,334	20,049	35,480	55,529

Bolton Adult Autism Support
Trustees' Annual Report for the Year Ended 31st October 2024

Bolton Adult Autism Support
Balance Sheet at 31st October 2024

	Notes	2024	2023
		£	£
Current Assets			
Bank Deposit Account		30,093	
Bank Current Account		25,849	55,529
Petty Cash		130	
Current Liabilities			
Creditors	10	(1,738)	
Net Current Assets			
Total Assets		54,334	55,529
Represented By			
Unrestricted Funds - general	9	22,304	20,049
Restricted Funds	9	32,030	35,480
Total Funds		54,334	55,529

Signed

R. Croft

Chairman

Date

R. Ellen

Treasurer

23.01.2025.

Bolton Adult Autism Support
Trustees' Annual Report for the Year Ended 31st October 2024

Notes to the Financial Statements for the Year Ended 31st October 2024

1. Principal accounting policies

The principal accounting policies are summarised below:-

a) Basis of Preparation

The financial statements have been prepared in accordance with Accounting and Reporting by Charities: Statement of Recommended Practice applicable to charities preparing their accounts in accordance with the Financial Reporting Standard applicable in the UK and Republic of Ireland (FRS 102) (effective 1 January 2015) - (Charities SORP (FRS 102)), the Financial Reporting Standard applicable in the UK and Republic of Ireland (FRS 102) and the Charities Act 2011.

Bolton Adult Autism Support meets the definition of a public benefit entity under FRS 102. Assets and liabilities are initially recognised at historical cost or transaction value unless otherwise stated in the relevant accounting policy note(s).

The financial statements have been prepared to give a 'true and fair' view and have departed from the Charities (Accounts and Reports) Regulations 2008 only to the extent required to provide a 'true and fair view'. This departure has involved following the Accounting and Reporting by Charities: Statement of Recommended Practice applicable to charities preparing their accounts in accordance with the Financial Reporting Standard applicable in the UK and Republic of Ireland (FRS 102) issued on 16 July 2014 rather than the Accounting and Reporting by Charities: Statement of Recommended Practice effective from 1 April 2005 which has since been withdrawn.

General Information

Bolton Adult Autism Support is a registered charity and is non-profit making. It is incorporated in the United Kingdom.

Principal Activity

To promote and protect the physical and mental health of people with Autism Spectrum Conditions (ASCs), their families and carers in Bolton and the surrounding areas, through the provision of support, education and practical advice, including the relief of poverty and distress.

To advance the education of the general public in all areas relating to Autism Spectrum Conditions (ASCs).

Notes to the Financial Statements continued

Bolton Adult Autism Support Trustees' Annual Report for the Year Ended 31st October 2024

b) Fund Accounting

- a. Unrestricted funds are available for use at the discretion of the trustees in furtherance of the general objectives of the charity.
- b. Designated funds are funds set aside by the trustees out of unrestricted general funds for specific future purposes or projects.
- c. Restricted funds are subject to restrictions on their expenditure imposed by the donor or through the terms of an appeal.

c) Preparation of the accounts on a going concern basis

The financial statements have been prepared under the under the historic cost convention and going concern basis. The trustees have carried out a review of the charity's cash flow and resources and are confident that the charity is able to meet its liabilities as they fall due for a period of at least one year from the date of approval of the financial statements.

d) Income

Income is recognised when it is received.

e) Expenditure

All expenditure has been reflected in the Statement of Financial Activities on an accrual basis. Expenditure is recognised where there is a legal or constructive obligation to make payments to third parties, it is probable that the settlement will be required and the amount of the obligation can be measured reliably.

Expenditure is classified under the following activity headings:

- Costs of raising funds comprise fundraising expenses
- Charitable expenditure comprises those costs incurred by the charity in the delivery of its activities and services for its beneficiaries. It includes those costs that can be allocated directly to such activities and those costs of an indirect nature necessary to support them.
- Administrative expense records the costs of supporting the delivery of services.

f) Allocation of support and governance costs

Support costs have been allocated between governance costs and other support costs. Governance costs comprise all costs involving the public accountability of the charity and its compliance with regulation and good practice. These costs include costs related to statutory audit and legal and professional fees together and are included within charitable expenditure.

Notes to the Financial Statements continued

Bolton Adult Autism Support
Trustees' Annual Report for the Year Ended 31st October 2024

g) Fixed Assets

Fixed assets that are funded by grants are expensed when the assets are acquired in the year of acquisition.

h) Cash at bank and in hand

Cash at bank and cash in hand includes cash and short term highly liquid investments with a short maturity of three months or less from the date of acquisition or opening of the deposit or similar account.

i) Financial Instruments

The charity only has financial assets and financial liabilities of a kind that qualify as basic financial instruments. Basic financial instruments are initially recognised at transaction value and subsequently measured at their settlement value.

j) Taxation

The company is a registered charity whose charitable activities are fully exempt from United Kingdom Corporation Tax and Capital Gains Tax.

k) Operating Leases

Rentals payable under operating leases are expensed as expenditure is incurred.

l) Pensions

The charity operates a defined contribution pension scheme. The pension costs charged in the financial statements represent the contributions payable by the company during the year ended 31st October 2024.

m) Donated Goods and Services

- Financial donations are accepted in line with our gift and donation acceptance policies, and recorded when received.

- Gifts in kind, including retail premises, are not included in the financial statements, but where appropriate are mentioned in the Annual Report.

Notes to the Financial Statements continued

Bolton Adult Autism Support
Trustees' Annual Report for the Year Ended 31st October 2024

2. Critical accounting judgements and key sources of estimation uncertainty

In applying the charity's accounting policies, the Trustees are required to make judgements, on the treatment of expenditure. The Trustees' judgements, estimates and assumptions are based on the best and most reliable evidence available at the time when the decisions are made, and are based on historical experience and other factors that are considered to be applicable. Due to the inherent subjectivity involved in making such judgements, estimates and assumptions, the actual results and outcomes may differ.

The estimates and underlying assumptions are reviewed on an ongoing basis. Revisions to accounting estimates are recognised in the period in which the estimate is revised, if the revision affects only that period, or in the period of the revision and future periods, if the revision affects both current and future periods.

Critical accounting judgements

The critical accounting judgements that the Trustees have made in the process of applying the charity's accounting policies that have the most significant effect on the amounts recognised in the statutory financial statements are discussed below.

Notes to the Financial Statements continued

Bolton Adult Autism Support
Trustees' Annual Report for the Year Ended 31st October 2024

3. Charitable Grants Received

	2024	2023
	£	£
Restricted Income		
National Lottery RC	35,408	33,831
National Lottery AWA	20,000	-
Bolton Fund	5,000	-
Charity Services Grant	3,000	3,000
Bolton Xmas Fund	99	-
CRH Charitable Trust	-	6,365
East Lancs Masonic Society	-	1,687
Unrestricted Income		
Sir James & Lady Scott Trust	3,000	-
Eric Wright Charitable Trust	1,000	-
Asda	626	-
PPL	500	-
Manchester Guardian Society	-	2,000
Bolton Community Voluntary Services	-	1,300
Total Unrestricted	5,126	2,130

4. Donations, Fundraising and Gifts Received

	2024	2023
	£	£
Fundraising and Donations Received	3,159	842
Manchester Metropolitan University	-	750
Total	3,159	1,592

Notes to the Financial Statements continued

Bolton Adult Autism Support
Trustees' Annual Report for the Year Ended 31st October 2024

5. Analysis of expenditure on charitable activities

	Unrestricted	Restricted	Total	Total
			2024	2023
	£	£	£	£
Staff Costs	-	31,287	31,287	13,971
Event Costs	545	108	653	-
Volunteer Expenses	294	1,467	1,761	1,054
Total	838	32,862	33,701	15,033

6. Administrative Costs

	Unrestricted	Restricted	Total	Total
			2024	2023
	£	£	£	£
Building Running Costs	2,441	5,178	7,619	3,007
Staff Costs	-	14,295	14,295	1,397
Legal Costs	1,000	3,415	4,415	-
Office Costs	268	4,446	4,714	767
Insurance & Payroll Costs	-	781	781	697
IT & Software	1,496	3,704	5,200	-
Website	-	80	80	547
Total	5,205	31,899	37,104	6,415

7. Governance Costs

	Unrestricted	Restricted	2024	Unrestricted	2023
	£	£	£	£	£
Independent Accountants Fee	-	2,160	2,160	-	-
Meeting Expenses	-	115	115	157	157
Total	-	2,275	2,275	-	157

Bolton Adult Autism Support
Trustees' Annual Report for the Year Ended 31st October 2024

8. Employment Costs

	2024	2023
	£	£
Staff Salaries	44,265	13,971
Pension Costs	1056	-

9. Analysis of Charitable Funds

	At 1st				At 31st
	November 2023				October 2024
Restricted Funds	Brought Forward	Income	Expenditure	Transfers	
	£	£	£	£	£
National Lottery RC	24,298	35,408	(46,272)	-	14,064
CRH Charitable Trust	6,365	-	(4,825)	-	1,540
Charity Services Grant	2,500	3,000	(3,201)	-	2,299
ELMC	1,687	-	(1,766)	79	-
National Lottery AWA	-	20,000	(8,285)	-	11,715
Bolton Fund	-	5,000	(2,588)	-	2,412
Bolton Xmas Fund	-	99	(99)	-	-
Total	35,480	63,507	67,036	79	32,030
Unrestricted Funds					
General	20,049	8,285	(6,044)	(79)	22,211
Total	55,529	71,792	(73,080)	-	54,241

Notes to the Financial Statements continued

Bolton Adult Autism Support
Trustees' Annual Report for the Year Ended 31st October 2024

10. Creditors

	2024	2023
	£	£
PAYE Due	369	-
Pension Due	169	-
Accrued Expenses	1,200	-
Total	1,738	-

11. Fund Analysis

	2024			2023		
	Unrestricted	Restricted	Total	Unrestricted	Restricted	Total
	£	£	£	£	£	£
Current Assets	22,240	32,030	54,270	20,049	35,480	55,529

BOLTON ADULT AUTISM SUPPORT

England & Wales - Charity number 1162560

Accounts



Bolton Adult Autism Support

Trustee's Annual Report and Financial Statements for the year ended

31st October 2023

Bolton Adult Autism Support
1st Floor, The Bolton Hub, Bold Street, Bolton, BL1 1LS
Registered Charity No: 1162560





**Bolton Adult Autism Support
Trustees Annual Report for the year ended 31st October 2023**

Contents

Legal and Administrative Information.	2
Objectives and activities.	3
Structure, governance and management.	5
Financial review.	6
Future plans.	6
Independent Examiners Report.	7
Financial statements.	8
Balance sheet.	9
Notes to the financial statements.	10 to 13

Bolton Adult Autism Support
Trustees Annual Report for the year ended 31st October 2023

Legal and Administrative Information

The Charity is a registered Charity number 1162560

The principal address and registered office is

The Bolton Hub
Bold Street
Bolton
BL1 1LS

Trustees who served during the period

Graham Heywood	to	17th January 2023
Charlotte Horrocks	to	18th September 2023
Barbara Brooks	to	26 th June 2023
Gerri Melling	to	26 th June 2023

Co-opted Members

Ralph Ellerton	from	22 nd April 2023
Rebecca Stokes	from	16 th May 2023
Anita Powley	from	26 th June 2023
Paul Ward	from	26 th June 2023
Michelle Grogan	from	26 th June 2023
Debbie Situ	from	26 th June 2023
Roselle Gorman	from	11 th December 2023

Officers

Chairman	Ralph Ellerton (Acting)
Vice Chairman	Rebecca Stokes (Acting)
Honorary Secretary	Paul Ward to 11 th December
Honorary Treasurer	Vacant

Operations team

Service Manager	Vicky Kenyon
Befriending Service Coordinator	Rachel Bartlett
Social Activities Coordinator	Leanne Joel
Website Manager	Neil Rickaby
Digital/ Marketing Officer	Paul Ward

Bolton Adult Autism Support

Trustees Annual Report for the year ended 31st October 2023

Structure, governance and management

The Charity is governed by its Constitution, adopted on 26th November 2014, as amended on 30th November 2016.

It is a registered charity, as defined by the Charities Act 2011.

Trustees are volunteers from the local community, chosen for their particular skills relative to the objects of the Charity.

The officers meet on a regular basis to progress the objects of the Charity

Objectives and activities

1. To promote and protect the physical and mental health of people with Autism Spectrum Conditions (ASCs), their families and carers in Bolton and the surrounding areas, through the provision of support, education and practical advice, including the relief of poverty and distress.
2. To advance the education of the general public in all areas relating to Autism Spectrum Conditions (ASCs).

Mr Graham Heywood

In January our founder and Chairman died. Graham Heywood set up this charity in 2013, and carried it forward with vision and purpose. He developed the principle of recruiting volunteers and training them to become befrienders to adults on the Autism Spectrum and their carers. This is a unique approach to the social problems of those who use our service, and its success was recognised in 2020 by the granting of the Queens Award for Voluntary Service to this organisation, and personal recognition of the British Empire Medal to both Graham and his wife Eira. We look forward to continuing the work that they started.

Our Mission Statement is as follows

Bolton Adult Autism Support's work will continue until every community understands, supports and embraces neuro-divergence and maintains comprehensive and fully-resourced provisions for those with Autism Spectrum Conditions and their families and carers from the first question to recognition and beyond.

Objectives and Highlights

The new board of Trustees is now building on the framework created by Graham, and are moving the charity forward. We have expanded into providing support to welfare benefit claimants who require assistance with the associated bureaucracy, and recently recruited two more staff members to grow our services into the wider community.

Longer terms objectives

We have plans to increase our services as new volunteers are inducted, and to offer social events in at least three new locations.

Bolton Adult Autism Support Trustees Annual Report for the year ended 31st October 2023

Measuring success

Following the interruption of the Covid pandemic, we have restarted our services and expanded into more premises for our social events. For this reporting year we have achieved the following:-

- Facilitated 5 student work placements from both Bolton and Manchester Metropolitan Universities, providing students with valuable work experience and working to improve awareness of autism with the general public
- Held 19 group social events, with 200 attendances across these events
- Recruited 12 volunteers for our befriending service, and matched them with service beneficiaries to create 12 befriending relationships
- Assisted 7 claimants with 8 disability welfare benefits issues, 4 of whom have so far received their outcome, achieving a combined annual total of £41,167

The Service Manager has given presentations to students at Manchester Metropolitan University, and we have delivered various information days in collaboration with partner organisations, such as Bolton Cares.

Fundraising performance

We are totally dependent on the support of grants received from charities who recognise the unique work that we are doing with adults who are no longer supported by state resources.

We continue to have the strong support of the National Lottery Fund, with a 5-year grant which has been uplifted to recognise both inflation and the charity's expansion of local services.

The Cheadle Royal Hospital Foundation has awarded us three-year funding to develop assistance for benefit claimants.

The Charity Service has awarded us a 3-year grant enabling us to recruit an additional staff member to expand our social activities in the Bolton area.

The Manchester Guardian Society now supports our befriending service and social activities, and East Lancs Masonic Charity has provided funds for office equipment.

Volunteering

Our volunteers are the core to our purpose. They give their time freely to support the adults and their carers who require assistance in their day to day lives, and all volunteers are required to have a clear enhanced DBS along with training in Befriending, Adult Safeguarding and Autism, which is delivered in house. During the year, a further 12 volunteers were recruited, we now have 7 active befrienders supporting 7 users of our unique social support.

Statement of Public Benefit

In planning our activities for the period, we kept in mind the Charity Commission's guidance on public benefit at our trustee meetings. The main activities are to provide social support to adults who are outside the scope of state welfare, and to assist in the process of registration for appropriate benefits.

Bolton Adult Autism Support

Trustees Annual Report for the year ended 31st October 2023

Main Achievements

The recruitment of a new Board of Trustees has brought a new vigour to our purpose. New sources of funding have enabled the charity to recruit two more part time staff to expand our services. Connections have been established with similar organisations. Plans and funding are in place to offer support to state benefit claimants who have difficulty in accessing appropriate services. We are looking to provide social events in a further three local locations.

Reserves Policy

The Charity aims to build up unrestricted and cash reserves to enable it to expand its activities both in Bolton and the surrounding area. We aim to hold free cash reserves equivalent to six months operational expenses, currently £30,000

Structure, governance and management

Organisational structure

Bolton Adult Autism Support is a registered charity. We are governed by our Constitution. The governing documents instruct the trustees to act in a way to promote the objects of the charity. The Service Manager is the Designated Safeguarding Lead and the Safeguarding Policy is attached with this report.

Decision making

The board of trustees delegate the day-to-day operational running of BAAS to the Service Manager and relevant staff.

Trustee recruitment

Trustee vacancies are advertised publicly and applicants are invited to contact the chair of trustees for an informal conversation before applying. Once an application is submitted, following a meeting with the chairman and approval from the board they will be invited to attend a meeting. Their formal appointment as either a trustee or co-opted member will be voted on at the next trustee meeting.

Those appointed as a trustee during the year will have to stand down at the AGM and be formally appointed by members.

Trustee induction and training

Once appointed, trustees will be issued with a welcome pack including their responsibilities as a trustee and a role description. They will get a tour of the organisation; an overview of services delivered and meet the staff team. They will be allocated a 'buddy' trustee who will oversee their induction. The Chairman will make arrangements to support any identified training needs and will be available to discuss the role as required.

Bolton Adult Autism Support
Trustees Annual Report for the year ended 31st October 2023

Remuneration

The board of trustees along with the Service Manager, are responsible for directing, controlling, running and operating the charity on a daily basis. All trustees give their time freely, any expenses related to the duties carried out by trustees and related party transactions are listed in the notes to the accounts. In this reporting period, no trustee received remuneration, there were no trustee expenses or related party transactions. Staff pay is set and reviewed by trustees, taking advice from external sources.

Financial Results

Income in the year was £48,605 (2022 £19,449), the increase due to successful fund raising in anticipation of the increase in staff, moving office and expansion of our services. Expenses at £20,380 (2022 £17,634) recognise the additional work undertaken by the Service Manager. Resulting surplus of £28,225 (2022 £1,815) is divided between Restricted funds £26,057 and Unrestricted funds £2,168. At the year end the Unrestricted Fund balance is £20,049, the Restricted Fund £35,480

Future Activities

We are seeking to amend the Constitution to include reference to supporting the users of our services to include assistance with applying for benefits. This is a major problem for adults who have difficulty in accessing formal procedures, and we will be establishing links to help other organisations who identify with this problem.

We plan to increase the number of locations where we hold social events. Early next year we hope to move to larger office accommodation and to raise our profile for both users and the general public.



Signed

Date 16th January 2024

Ralph John Ellerton

Chairman

Bolton Adult Autism Support
Trustees Annual Report for the year ended 31st October 2023

Independent Examiner's Report

To the Trustees of Bolton Adult Autism Support

I have examined the accounts of Bolton Adult Autism Support for the year ended 31st October 2023 which comprise the Receipts and Payments Statement, Balance Sheet, and related notes. These accounts have been prepared in accordance with the accounting policies set out in Note 1 to the accounts.

Respective Responsibilities of Trustees and Examiner

The charity's trustees are responsible for the preparation of the accounts in accordance with the Charities Statement of Recognised Practice and for being satisfied that the accounts give a true and fair view. My responsibility is to examine the accounts in accordance with the Directions given by the Charity Commission for England and Wales and to report my/our findings to you.

Basis of Opinion

My examination was conducted in accordance with the Directions of the Charity Commission for England and Wales and in compliance with the Code of Practice on the Examination of Charities' Accounts. An examination includes a review of the accounting records kept by the charity and a comparison of the accounts presented with those records. It also includes consideration of any unusual items or disclosures in the accounts and seeking explanations from trustees concerning any such matters. The procedures undertaken do not provide all the evidence that would be required in an audit and consequently, I do not express an audit opinion on the accounts.

Opinion

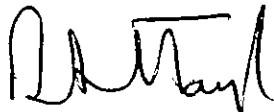
In my opinion, the accounts have been prepared in accordance with the directions of the Charity Commission for England and Wales and give a true and fair view of the financial affairs of the charity at 31st October 2023 and its incoming resources and application of resources for the year then ended.

Matters on which I am required to report by exception:

I note that it has not been possible to establish the allocation of the opening balance between Unrestricted and Restricted funds. A reasonable estimate has been made, and my report is not qualified by this omission.

I have nothing to report in respect of the matters specified by the Directions of the Charity Commission for England and Wales in respect of reporting by exception.

Signed



Date

16.1.24

David Taylor
Senior Statutory Auditor

Harts Limited, Westminster House, 10 Westminster Road, Macclesfield, Cheshire, SK12 1BX

Bolton Adult Autism Support
Trustees Annual Report for the year ended 31st October 2023

Statement of Financial Activities for the year ended 31st October 2023

Receipts & Payments Account	Notes	2023			2022		
		Unrestricted	Restricted	Total	Unrestricted	Restricted	Total
		£	£	£	£	£	£
Income							
Charitable Grants	3	2,130	44,883	47,013		17,528	17,528
Donations & Fundraising	4	1,572	-	1,592	1,921	-	1,921
Total Income		3,722	44,883	48,605	1,921	17,528	19,449
Expenditure							
Charitable Activities	5	-	13,808	13,808			15,033
Administrative Expenses	6	1,307	5,018	6,415			2,601
Governance Costs		157	-	157			
Total Expenditure		1,554	18,826	20,380			17,634
Surplus of Income Over Expenditure		2,168	26,057	28,225	985	830	1,815
Balances brought forward		17,881	9,423	27,304	16,896	8,593	25,489
Balances carried forward		20,049	35,480	55,529	17,881	9,423	27,304

The Statement of Financial Activities includes all gains and losses recognised in the year.

All income and expenditure derive from continuing activities.

The notes on pages 9 to 13 form an integral part of these accounts.

Bolton Adult Autism Support
Trustees Annual Report for the year ended 31st October 2023

Balance Sheet at 31st October 2023

	2023	2022
	£	£
Funds at Lloyds Bank	55,529	27,304
Represented By		
Unrestricted Funds - general	20,049	17,881
Restricted Funds	35,480	9,423
	55,529	27,304

Rf Ellerton

Signed

Date 16th January 2024

Ralph John Ellerton

Chairman

Bolton Adult Autism Support
Trustees Annual Report for the year ended 31st October 2023

Notes to the financial statements
for the year ended 31 October 2023

1. Principal accounting policies

The principal accounting policies are summarised below:

a) Basis of preparation

The financial statements have been prepared in accordance with Accounting and Reporting by Charities: Statement of Recommended Practice applicable to smaller charities preparing their accounts on a Receipts and Payments basis.

Bolton Adult Autism Support meets the definition of a public benefit entity under FRS 102.

General Information

Bolton Adult Autism Support is a registered charity and is non-profit making. It is incorporated in the United Kingdom.

Principal Activity

To promote and protect the physical and mental health of people with Autism Spectrum Conditions (ASCs), their families and carers in Bolton and the surrounding areas, through the provision of support, education and practical advice, including the relief of poverty and distress.

To advance the education of the general public in all areas relating to Autism Spectrum Conditions (ASCs).

b) Fund accounting

- a. Unrestricted funds are available for use at the discretion of the trustees in furtherance of the general objectives of the charity.
- b. Designated funds are funds set aside by the trustees out of unrestricted general funds for specific future purposes or projects.
- c. Restricted funds are subject to restrictions on their expenditure imposed by the donor or through the terms of an appeal.

c) Preparation of the accounts on a going concern basis

The financial statements have been prepared under the going concern basis. The trustees have carried out a review of the charity's cash flow and resources and are confident that the charity is able to meet its liabilities as they fall due for a period of at least one year from the date of approval of the financial statements.

d) Income

Income is recognised when it is received.

Bolton Adult Autism Support
Trustees Annual Report for the year ended 31st October 2023

Notes to the financial statements continued

e) Expenditure

All expenditure has been reflected in the Statement of Financial Activities when payment is settled.

Expenditure is classified under the following activity headings:

- Costs of raising funds comprise fundraising expenses.
- Charitable expenditure comprises those costs incurred by the charity in the delivery of its activities and services for its beneficiaries. It includes those costs that can be allocated directly to such activities and those costs of an indirect nature necessary to support them.
- Administrative expense records the costs of supporting the delivery of services

f) Allocation of support and governance costs

Support costs have been allocated between governance costs and other support costs. Governance costs comprise all costs involving the public accountability of the charity and its compliance with regulation and good practice. These costs include costs related to statutory audit and legal and professional fees together and are included within charitable expenditure.

g) Fixed assets

Fixed assets that are funded by grants are expensed when the assets are acquired in the year of acquisition.

h) Cash at bank and in hand

Cash at bank and cash in hand includes cash and short term highly liquid investments with a short maturity of three months or less from the date of acquisition or opening of the deposit or similar account.

i) Financial instruments

The charity only has financial assets and financial liabilities of a kind that qualify as basic financial instruments. Basic financial instruments are initially recognised at transaction value and subsequently measured at their settlement value.

j) Taxation

The company is a registered charity whose charitable activities are fully exempt from United Kingdom Corporation Tax and Capital Gains Tax.

k) Operating leases

Rentals payable under operating leases are expensed as expenditure is incurred

l) Pensions

The charity operates a defined contribution pension scheme. The pension costs charged in the financial statements represent the contributions payable by the company during the year ended 31st October 2023

Bolton Adult Autism Support
Trustees Annual Report for the year ended 31st October 2023

Notes to the financial statements continued

m) Donated goods and services

- Financial donations are accepted in line with our gift and donation acceptance policies, and recorded when received.
- Gifts in kind, including retail premises, are not included in the financial statements, but where appropriate are mentioned in the Annual Report.

2. Critical accounting judgements and key sources of estimation uncertainty

In applying the charity's accounting policies, the trustees are required to make judgements, on the treatment of expenditure. The trustees' judgements, estimates and assumptions are based on the best and most reliable evidence available at the time when the decisions are made, and are based on historical experience and other factors that are considered to be applicable. Due to the inherent subjectivity involved in making such judgements, estimates and assumptions, the actual results and outcomes may differ.

The estimates and underlying assumptions are reviewed on an ongoing basis. Revisions to accounting estimates are recognised in the period in which the estimate is revised, if the revision affects only that period, or in the period of the revision and future periods, if the revision affects both current and future periods.

Critical accounting judgements

The critical accounting judgements that the trustees have made in the process of applying the charity's accounting policies that have the most significant effect on the amounts recognised in the statutory financial statements are discussed below.

Bolton Adult Autism Support
Trustees Annual Report for the year ended 31st October 2023

Notes to the financial statements continued

3. Charitable Grants Received

	2023	2022
	£	£
Restricted Income		
National Lottery	33,831	17,528
Cheadle Royal Hospital	6,365	-
Charity Services	3,000	-
East Lancs Masonic Charity	1,687	-
Total Restricted	44,883	17,528
Unrestricted Income		
Manchester Guardian Society	2,000	-
Bolton Community Voluntary Services	130	-
Total Unrestricted	2,130	-

4. Donations, Fundraising and gifts received

Unrestricted Income	2023	2022
	£	£
Manchester Metropolitan University	750	750
Fund raising and donations received	842	1,171
Total	1,592	1,921

5. Analysis of expenditure on charitable activities

	Unrestricted	Restricted	Total 2023	Total 2022
	£	£	£	£
Staff costs	-	13,971	13,971	13,648
Event costs	-	-	-	936
Volunteer expenses	-	1,054	1,054	1,814
Total	-	15,025	15,025	15,033

Bolton Adult Autism Support
Trustees Annual Report for the year ended 31st October 2023

Notes to the financial statements continued

6. Administrative Costs

	Unrestricted	Restricted	Total	Total
			2023	2022
	£	£	£	£
Building running costs	-	3,007	3,007	300
Staff costs	1,397	-	1,397	1,365
Office costs	-	767	767	-
Insurance & payroll costs	-	697	697	265
Website	-	547	547	671
Total	1,397	5,018	6,415	2,601

7. Employment Costs

	2023	2022
	£	£
Staff Salaries	13,971	13,225

8.. Analysis of Charitable funds

	At 1st November 2022 Brought forward	Income £	Expenditure £	Transfers £	At 31st October 2023 £
Restricted funds					
National Lottery	9,423	33,831	(18,326)		24,928
CRH Grant	-	6,365	-		6,365
Charity Services Grant	-	3,000	(500)		2,500
East Lincs Masonic Charity	-	1,687	-		1,687
Restricted Funds	<u>9,423</u>	<u>44,883</u>	<u>(18,826)</u>		<u>35,480</u>
Unrestricted funds					
General	<u>17,881</u>	<u>3,722</u>	<u>(1,554)</u>		<u>20,049</u>
Total	<u>27,304</u>	<u>48,605</u>	<u>(20,380)</u>		<u>55,529</u>