



# Annual Report 2022

CHARITY NUMBER: 1162127

Upper Parliament Street, Liverpool



# Table of Contents

<b>1. Objects &amp; Activities</b>	<b>3</b>
<b>1.1 Purpose Statement</b>	<b>3</b>
1. Values	3
2. Missional Priorities	3
<b>1.2 Congregations</b>	<b>4</b>
1. Sunday	4
3. Thursday	5
<b>3.1 STJ Activities</b>	<b>5</b>
1. Student Ministry	5
2. Families Ministry	6
3. Connect Groups	6
4. Alpha Course	6
5. STJ Minis	6
6. Liverpool Next Generation	7
7. University Chaplaincy	7
8. School Chaplaincy	7
9. Youth Work	7
10. Church Holidays	8
11. Baptism and Confirmation Service	8
12. Prayer	8
13. Marriage Course	8
14. Love Your Neighbour	8
15. Community Organising	8
16. Building Project	9
17. Ministry Assistant Programme	10
18. Missional Partners	10
19. Legacy	10
20. Activities undertaken in 2023	11
21. Mission Initiatives	12
<b>3.2 Plans for 2023</b>	<b>12</b>
<b>4. Structure &amp; Management</b>	<b>14</b>
<b>4.1 Parochial Church Council (PCC)</b>	<b>14</b>
<b>4.2 Staff Team</b>	<b>14</b>
<b>4.3 Structure, Management &amp; Governance</b>	<b>15</b>
	<b>1</b>


4.4	Access, Inclusion & Policies	16
5.	Finance	17
5.1	Finance Summary	17
1.	Donations	17
2.	Parish Share	17
3.	St James Charitable Giving	17
4.	Grants	19
6.	Restricted Donations	19
7.	Declaration	19
5.2	St James in the City Accounts	20
1.	Statement of Financial Activity	20
2.	Balance Sheet	21
3.	Note to the Financial Statement	22
4.	Analysis of income and expenditure	25
5.3	Independent Examiners Report	29


## 1. Objects & Activities


### 1.1 Purpose Statement


#### 1. Values


St James has established the following values.

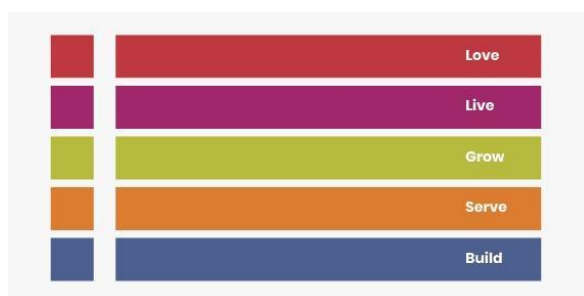
 **LOVE** Love God – Our central focus is meeting together to worship and glorify God

 **LIVE** Live as community – Create strong supportive networks. Provide friendship, family and home to people from many backgrounds and nations

 **GROW** Grow more like Jesus – know more about him, become more like him

 **SERVE** Serve our communities – Work to make a real difference in Liverpool and beyond, especially for the poor

 **BUILD** Build God's Kingdom – Locally, nationally, and globally for those yet to know Jesus. Train, equip, send and resource



## 2. Missional Priorities

As the church has grown it has developed the following priorities:

1. Church Planting: a culture of growing and multiplying out. We have a vision to multiply the good and give it away generously. This includes new expressions of churches and will be costly. We have already planted a new 10.30 service (Sep 2017), STJ minis (baby and toddler congregation– Jan 2019), student congregation (Sep 2019) and are planning a church plant in the coming months.
2. Depth in discipleship: we aim to be something much bigger than just Sunday Church. We are an attractional Church, but discipleship is front and centre. This means we make spiritual growth a priority, we do life together and make sure a mid-week group is available for all demographics. These groups have multiplied in 2022 and further plans are in place to broaden these in 2023. We run Alpha and use it as a tool for missional growth and leadership development.
3. Students: we have been asked by the diocese to be missionally intentional with students, and we have a growing group of about 50 students who regularly attend Church. We have a term time mid-week student group, Mammoth Mondays, comprising of worship, a cooked meal followed by study and ministry in the marquee. We have a new student and young adult congregation which launched Sep 2019 and work closely with the Anglican Student Chaplaincy team.

4. Adults: part of our missional intentionality. This is a growing area committed to deeper discipleship through mid-week groups and socials. The socials are an important and central part of this ministry.
5. Families: are a big part of STJ. All age worship is an important and a valued part of our Sunday worship. In Jan 2019 we launched a baby and toddler congregation and in May 2019 (start July) we appointed a families' worker with a focus on missional outreach. Within our families we are developing a culture of invitation and discipleship. We also hold multiple family events (social and missional) and services throughout the year. 2022 saw a new families connect group and film events launch.
6. Youth: was a huge missional priority in 2022. We relaunched youth in person in September 2021 and a brand new youth floor: the loft, has been created in the building. This is supported by our call to resource the next generation and LNG.
7. Developing leaders: both within the secular world and ordained ministry. Many members have started training for full time ordained ministry. We run a Leadership Development Course and have regular sermon series on enabling and equipping leaders. Our midweek groups also encourage members to be leaders in their work environment. Since 2012 we have run an internship programme, which has included student and worship interns.
8. Generosity: we give an increasing amount of our income away. This includes money to local charities, larger national charities, and missionaries, as well as to our church plants. We aim to invest heavily in everyone who comes to St James, to grow their relationships with Christ, to help them nurture their gifts, and then encourage them to take those gifts to wherever God is calling them. We also encourage members to get involved in ministries run by other churches, and local community organisations and try to resource local churches in Toxteth whenever possible. This is costly for St James but is about building God's Kingdom everywhere.
9. Justice: a key concern of STJ is to ensure that the faith of the congregation is grounded in the realities of - and the need as Christians to speak and act against - social injustice. We partner with the JustLove student charity and have strong links with several local and national charitable groups.
10. Welcome: we prioritise a culture of welcome and hospitality both on a Sunday and throughout the week. Food and hospitality are central to this ministry.
11. LNG: alongside the above, our collaboration within the diocese Liverpool Next Generation (LNG) project is a vital mission priority, focusing some of our activities for people 11-30 years old.

## 1.2 Congregations

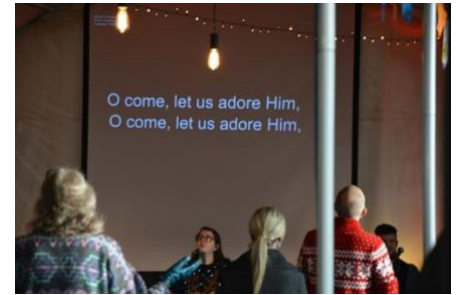
We meet every week to build community and worship God. We meet across 5 congregations Sunday; 10.30am, 4pm and 6:30pm, Wednesday (The Brewery) and Thursday (STJMinis).

Across all our congregations our worship is lively, and spirit filled. We put a high value on the Word of God and take seriously the need to apply the Word to our contemporary situation and the needs around us. The different congregations have different focuses, and their talks and sermons reflect this.

### 1. Sunday

Our Sunday services are informal and relaxed, an opportunity to meet to worship, be challenged and engage with God. We have three Sunday gatherings – 10.30am, 4pm and 6:30pm.

The 10.30am includes 3 children's groups, creche, infants and juniors. 4pm includes a youth group as well as the same 3 groups. The 6:30pm service has no children's provision and is primarily a shared space for relaxed prayer and worship. Our usual Sunday attendance is 125 adults and 33 children.



We have journeyed through sermon series' on the Psalms, Meals with Jesus, Resourcing the Next Generation, Prayer and Advent.

## 2. Thursday

The Brewery has been meeting at The Dispensary Pub weekly this year and 2022 has seen more young adults come along. We've been looking at some of the questions of life and faith that we have, and discussing our own personal experiences together. We've seen 22 new people step into this space this term, and we're looking forward to continuing to delve deeper in the new year.

## 3. Thursday

We've had another great year with Minis! We are still a small (though growing) team with room for more, but one of great calibre with gifts that complement each other! We have also really enjoyed having different members of the staff team come along and serve with us. Our team creates a really welcoming environment and a fun, family atmosphere. We regularly have 12 families; not just mums but some dads, grandparents and great-grandparents. We've had a number of families from other cultures – Romania, Italy, Morocco and Peru. It's been really lovely to see friendships forming and sometimes people meet up in the week. We also love our holiday meet-ups in the park! We have people who attend Minis Extra regularly, some of whom don't have any regular church connections. We have read and discussed scripture together, heard 8 personal testimonies, learnt about parenting and how to raise Godly children and prayed together. This coming year we are looking forward to welcoming new families, having more people from our congregation serve on our team and deepening relationships as we learn more about God's heart for us.

### 3.1 STJ Activities

#### 1. Student Ministry

2022 has been an exciting year for student ministry at StJ with over 50 students attending regularly. We started the year by following the Mental Wellbeing series resources together and in March, we took our Student Leaders on an overnight retreat. We finished our first term with a Spring Ball in church and it was wonderful to see our students dressed to the nines and dancing the night away with our silent disco. In the summer term, we studied the book of James and ended the academic year with a trip to Formby Beach. We said goodbye to John Lisle and Henry Clothier who had led our student community so well. We had the joy of welcoming some new students in the Autumn term. All of our students participated in

the Alpha course which was a great experience as it was the first time for many and they really enjoyed it. Eating together is always a highlight so it was only right to finish the year with a Christmas dinner party in church to celebrate the great year we had together. We have seen 88 new students engage with discipleship this year.

## 2. Families Ministry

It has been really great to see families re-establishing patterns of church life post-pandemic. The fun at StJ kids continued on Sundays! We had a great time at Quinta (despite the last-minute changes due to covid) with our 42 children and young people. We celebrated Easter with our local community with our Easter Egg hunt and had a big party outside church for the Queen's Jubilee. This Summer some families went to Focus and had fun camping together, learning about Jesus and playing loads of games. We have had plenty of community film days in church and have enjoyed days out at different parks. Our Nativity was so much fun this year and featured an all-star cast. There is a lot to give thanks for including our amazing team and volunteers. We are excited about the year ahead, especially with Easter events and Focus. We are prayerful and expectant as we grow together in faith and reach out to the families in our community. A new family connect group started meeting fortnightly on Fridays.

## 3. Connect Groups

We encourage every member of our Church to be part of a Connect Group; it's the primary way we look after each other and strengthen our friendships. Our groups have people from different walks of life all sharing together and learning from each other. We have really enjoyed the 'Church' and 'Resourcing the Next Generation' studies following the sermon series. We hope to have a few more connect groups launching this year for people based in different parts of Liverpool.

## 4. Alpha Course

We ran three Alphas in 2022 - one in February and two in October (adult and youth). Thanks to congregation members we provided a hot meal to share together every week at our adult Alphas. We have been so blessed by Alpha this year and we have seen new faces from across the city. We have welcomed new people into StJ through the connections they made during Alpha.

## 5. STJ Minis

We've had another great year with Minis! We are still a small (though growing) team with room for more, but one of great calibre with gifts that complement each other! We have also really enjoyed having different members of the staff team come along and serve with us. Our team creates a really welcoming environment and a fun, family atmosphere. We've had a number of families from other cultures - Romania, Italy, Morocco and Peru. It's been really lovely to see friendships forming and sometimes people meet up in the week. We also love our holiday meet-ups in the park! We have people who attend Minis Extra regularly, some of whom don't have any regular church connections. We have read and discussed scripture together, heard personal testimonies, learnt about parenting and how to raise Godly children and prayed together. This coming year we are looking forward to welcoming new families, having more people from our congregation serve on our team and deepening relationships as we learn more about God's heart for us. We regularly have 12 families; not just mums but dads, grandparents and great-grandparents.

## 6. Liverpool Next Generation

The Liverpool Diocesan growth strategy, 'asking God for a bigger church to make a bigger difference', applies to all age groups, with our current strength being with older age groups and primary aged children. A distinct and urgent need was recognised to increase our capacity and ability to address the missing generation of 11-29 year olds, as challenged through our Diocesan Peer Review. In September 2020, LNG launched to provide outstanding, focused youth and student ministry that means young people enter the workplace and social space with an everyday faith that is confident in the gospel, filled with the Spirit and with a grasp on their God-given purpose. LNG creates opportunities for young leaders to develop in the church context.

Throughout 2022, Liverpool Next Generation has continued to and developed working with many students and pupils across Liverpool.

## 7. University Chaplaincy

There is much to celebrate as the Chaplaincy Team looks back over 2022. Hannah, Lois, Tiria and John from STJ, along with the other Chaplain Assistants representing three other local Anglican churches, continued engaging with students on campus and accommodation blocks, and building up the student ministries in their churches. Our on-campus highlights were delivering the Alpha Course at our International Students' Café where we saw 15 students attend and starting Mindful Art. We also trialled a Mental Health Kit called 'I'm Not Alright' in an accommodation block and offered 'The Good Grief Café' to students and staff. After making Faith Express feel more like a cafe during the Summer, we were able to open every weekday between 12 and 2pm for Flat White and Faith, Coffee and Chat, Mindful Art and International Students Café. It's now a great place for students to come and work or socialise. We met many new students at Freshers Events who are now engaging with Faith Express and/or our churches. We have seen many students become part of a Christian community, some for whom this is a first. In October we employed Bethan, Gaby and Ellie as Chaplain Assistants from STJ along with a student from Penny Lane church who have helped students transition from campus events to church events. Rebecca and the team have also been amazing with our social media and have seen an increase in followers, so more students have been able to see what we're doing and engage.

## 8. School Chaplaincy

The schools team have enjoyed a fruitful year delivering lots of faith exploration sessions and discipled many in our Christian Union groups. It has been amazing seeing young people grow in faith and confidence as they live out following Jesus. Some of our highlights have been seeing more young people lead in school groups and assemblies, starting new groups such as after school football and seeing school students attending StJ Youth and church!

## 9. Youth Work

This last year at StJ Youth has been the best yet. We have worked really hard with the schools team to bridge the gap between school and church so much so that our youth group has now grown to over 40 young people! We held our Easter Extravaganza which was a pilot bridging event. We had a great Summer



- we took 9 young people to Focus (4 of whom were from our school connections) and each of them had significant encounters with the Holy Spirit. We also took 4 young people to Nefyn. In September we kicked off the academic year with "Nugg Night" (500+ chicken nuggets) and we ran Youth Alpha. The Loft has been put to great use for both social and worship activities and both the youth and leaders absolutely love this space. We can't wait for what 2023 might hold for the youth in this city! We have seen a total of 157 young people engage in weekly Christian discipleship in school and/or church.

## 10. Church Holidays

We loved being able to go on holiday with each other again in 2022. In March, 134 people went on the church weekend away to Quinta for fun, worship, teaching from Mike McGurk, walks and games! And in July, we took 50 people to Focus, the HTB Churches Summer Festival which was a great time of community, worship, teaching, seminars, sports and eating for every age! We are looking forward to Focus 2023 and spending time away together as students, youth and adults!

## 11. Baptism and Confirmation Service

At the end of May we held the Deanery Baptism and Confirmation Service. We had 7 Baptisms and 15 confirmations. Bishop Bev led the baptisms and confirmations, and the service was well-attended by family and friends of candidates.

## 12. Prayer

We felt a strong call to pray in 2022. We continued our regular fortnightly prayer meetings – alternating between morning and evening but on Tuesdays instead of Wednesdays. At the end of September, we held our first half night of prayer and we journeyed through a 4 week sermon series on Pete Grieg's acronym: PRAY followed by a service of prayer.

## 13. Marriage Course

We did not run any Marriage Courses in 2022.

## 14. Love Your Neighbour

Love Your Neighbour food hub provided vitally needed meals to vulnerable people around Liverpool. We have mobilised volunteers. Over 70 local families have continued to be supported including homeless people, vulnerable women, sex workers, refugees and asylum seekers, families struggling with food insecurities and people directly affected through Covid poverty. Since May 2020 we have provided 81,000 meals. Due to lack of funding, Love Your Neighbour came to an end in February 2022.

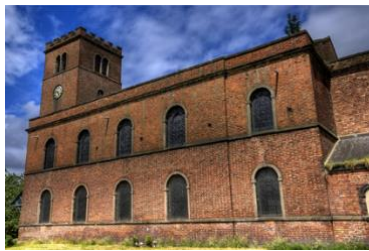
## 15. Community Organising

As part of our commitment to social justice, we have been investing in relationships with larger institutions across Liverpool and with Citizens UK, a national network facilitating Community Organising in different cities across the UK. In 2022 we made significant progress towards establishing the Liverpool Citizens Chapter. We have established good relationships with a diverse range of institutions across the

city and have formed a steering group to guide progress made and feedback key decisions. As Liverpool Citizens begins to take shape, this will present significant volunteering opportunities and enable us to act together as a wider congregation on key issues affecting the city. In November, we participated in the Liverpool Citizen's pre-founding assembly.

## 16. Building Project

It has always been one of our aims to bring St James Church, Toxteth back to life. St James is a building of significant historic, architectural, and cultural importance. The Grade 2\* listed building, derelict since 1972, had been a place of worship for an eclectic mix of Liverpoolians.



The church is situated at a key intersection between Toxteth, the docklands and the city centre, an area which was previously industrial and is currently being developed as a residential district.

Over the years the restoration project has taken various forms and an advance is down to the support and generosity of the congregation and various grants and funders.

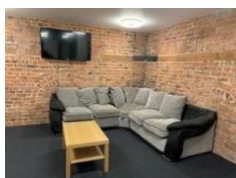
- 2012 emergency works to fully restore the Nave and Chancel roofs at a cost of £600K were completed.
- Multiple unsuccessful applications to National Heritage Lottery Fund and LCC withdrawing 5 acres of land from our regeneration scheme meant our focus moved from the full regeneration project (Heritage and Hope Project) to concentrating on restoring the church.
- 2018 the PCC decided to construct a kitchen, 2 toilets and a small office at the West End of the Nave. This was completed in the Summer of 2018. We also improved the outside and entrance into church with ramps, new doors and the planting of a wildflower meadow.
- In 2019 the tent was further extended to its full potential and a temporary notice board was added to the entrance area.



By the grace of God, in 2021 we were able to undertake a huge building project and we now have a renovated building, with new rooms, central heating and a much bigger and more useful worship space. We could not have done this without several grant funders and the generosity of our congregation.



We've loved using the extra rooms for kids work, Alpha, prayer meetings, small groups, youth and student work and more in 2022! The top floor mezzanine which has been unofficially



named 'The Loft' specifically for our youth ministry. The space includes games consoles, TVs, table tennis tables and a servery with plenty of space and capacity to produce amazing milkshakes!!

In March, we held an official launch service of our new building, with faces old and new attending!

### 17. Ministry Assistant Programme

In 2022, we continued our Ministry Assistant Programme with Titus, Henry, Samuel and John finishing in June. We were pleased to welcome Sophie Fazakerley, Oli Rugg and Josiah Madziwanyika onto the Programme in September. We love having them around and helping them develop as great leaders!

### 18. Missional Partners

StJ is connected with multiple missional partners. The degree to which we work with the partners varies. Some use our building, others we support financially, and they all are part of our regular prayer.

- Chris and Liz continue Church planting in La Zubia near Granada in Spain.
- Jarod and Bexi in Croatia, who have now moved back to the UK.
- Just Love student charity which members from St James are involved with and they regularly use our building.
- Wycliffe Bible Translators
- 4 Wings Charity supports vulnerable woman, they have been using our building
- University CUs regularly use our building
- LNG chaplains in the university and schools.
- Organisations and other churches in our Deanery

### 19. Legacy

St James has always had a focus on a young demographic. Since the re-start of St James, we have the privilege of ministering to over 200 students and over 30 11-18 year olds. With the addition of the LNG chaplaincy teams this has increased to interacting with 800 students and 2600 11-18 year olds.

A key aspect of St James is the development of future leaders, leaders for all spheres of life with a specific focus on full time Christian ministry, including ordination.

We have had members

- Go on to further theological study – year outs in Bible schools and Masters in Christian Leadership
- Vicar has had his book published, A theology of Hopeful Influence
- Members have become Chaplains to the different Universities in Liverpool
- Students have gone to work as UCCF interns
- Members have gone on mission trips Bangladesh, Peru and Uganda
- We continue to invite members to preach

- Members have completed the Worship Central Year
- Our music and worship team continues to grow with new worship leaders.
- Members work for charities, secular and Christian.
- Members have volunteered for the Christian Community e.g., Scargill
- Many members have been supported through the discernment process to ordained ministry. Some are outlined below

- James Harding was ordained in Liverpool and became the university chaplain as well as working within STJ staff team. He went on to be the Principle of St Pauls Theological College in Malaysia, and is currently serving as the Director of St Mellitus College South West.
- Tabitha who completed a year working as an intern at Liverpool Cathedral before training at Cranmer Hall Durham was ordained June 2017. After serving her curacy at St Clement and St Bede's Toxteth, she is currently Interim Associate Priest to Liverpool Our Lady and St Nicholas.
- Danny completed his training at Ridley Hall Cambridge was ordained June 2017 and serves as Curate at St Georges Gateshead.
- Gareth completed his training for ordination at Ridley Hall Cambridge. He was ordained June 2018 and, after serving his curacy in Newton le Willows, is now a vicar in St. Helens.
- Becca worked as assistant student chaplain at Hope University and in Sep 2018 started ordination training at Cranmer Hall Durham.
- Ryan was ordained June 2017, worked as University Chaplain and has now returned to Canada to head up a church.
- Debs Davies, a previous member of staff, completed her ordination training at Trinity College Bristol (started Sep 2018) and is now serving her curacy in St. Helens.
- Jerome, an intern, has started Ordination training in Cambridge (Sep 2019).
- Andrew Bailey a StJ student worker and Anglican chaplain started ordination training at Trinity College Bristol (Sep 2020)
- John Lisle and Kirsty Fazakerley, both on our staff team for many years started ordination training at Emmanuel Theological College in September 2022 and have moved to their placement church with their families.

## 20. Activities undertaken in 2023

There were lots of exciting activities during 2023

- In January we finally had our Nativity service!
- We held an official Launch Service for our newly renovated building in March.
- We've followed sermon series' on Psalms, Meals with Jesus, Resourcing the Next Generation, Prayer and Advent.
- We dedicated 5 children.
- We celebrated John and Tee's wedding!
- We participated in the Church of England's Living inLove and Faith course.
- We took 134 of us to Quinta, our church weekend away in March.
- We hosted the HTB leadership conference.
- We held a Ukraine Clothes Swap Fundraiser.
- In May we held the Deanery Baptism and Confirmation service with 7 baptisms and 15 confirmations.
- We threw a party for the Queen's Platinum Jubilee.



- We attended Jerome's ordination and Michelle's priesting at the Cathedral.
- 50 of us went to Focus in the Summer.
- We prayed out the Fazakerleys and Lises as Kirsty and John started ordination training.
- We held a service of reflection after the passing of The Queen.
- We responded to a fresh call to prayer by continuing our twice monthly prayer meetings and holding a half night of prayer.
- We celebrated our achievement of the bronze Eco Church award!
- We released the Hopeful Influence Podcast in October.
- We hosted a community Fireworks event with over 400 people attending.
- We were deeply saddened at the passing of Andrew McAvoy in November. Andrew was a well-loved member of St James in the City. We celebrated his life with his family, friends and colleagues at the end of November.
- We attended the pre-founding assembly of Liverpool Citizens.
- We enjoyed celebrating Christmas with our Christmas Party, Carol Services and Nativity.

## 21. Mission Initiatives

It was great to have a full year with a new building and less covid restrictions to focus on Mission. In 2022 the Mission initiatives were:

- Staff and congregation members continue to preach at other churches and events, including CU meetings and weekends away
- We have aided other churches in the deanery by providing Sunday worship leading and preaching.
- Family events in various locations
- Multiple Alphas (Youth, online and in person Adult)
- We have focused our Youth group, revamping with new equipment in the loft and focusing on discipling young people to invite their friends – which they have!
- We have continued to livestream our services.
- Midweek connect groups continued and grew.
- Quinta and Focus Church Holidays
- We hosted more events for the local community: fireworks with 400 people in attendance, Queens Jubilee Party, Easter Egg Hunt and regular family film events.
- LNG schools' teams have had a great year, more in person events (assemblies, lunchtime groups etc) than ever before.
- University chaplaincy team were able to do more events, including hosting an activity every day (Mon-Fri) in Faith Express and also at Dwell, Cathedral Campus
- Our social media has developed and grown.
- The youth team continued their own Twitch stream

## 3.2 Plans for 2023

Under God we've outlined some of our key plans for 2023 in our Vision and Giving booklet. In summary, we are asking God to help us achieve the following:

- Growing a bigger church to make a bigger difference: more people knowing Jesus, more justice in the world
- Continue to grow and develop leaders

- Develop Church Grounds
- Termly Alphas
- The Marriage Course
- Growth of both uni and school's chaplaincy
- Multiplication of the connect and Families Connect groups
- More family events and family mission
- Steward resources well and recover some of the financial deficit from 2022
- To continue to grow St James in both quantity and quality. Our aim is to help new people to become members of St James, growing in their faith, discovering their gifts and abilities, reaching out in mission and doing it all for God's glory

## 4. Structure & Management

### 4.1 Parochial Church Council (PCC)

Under the terms of the Synodical Government Measure 1969, it is the duty of the Incumbent and the PCC to consult together on matters of general concern and importance in the parish.

The main function of the PCC is to co-operate with the Vicar in promoting the whole mission of the Church, pastoral, evangelistic, social, and ecumenical.

PCC Membership:

Vicar	Jude Padfield
Curate	Jerome Daniels
Wardens:	Bryan Kernaghan Andy Kidd
Co-opted Treasurer:	Janet Wightman
Secretary:	Sophie McCoid
Deanery Synod Rep:	Andy Kidd
Elected Members:	Sophie McCoid Steve Rowe Charles Woolnough Matthew Harley Josiah Madziwanyika Emma Kane Bethan Asher

### 4.2 Staff Team

Alongside the Vicar and Curates, the PCC employ a staff team. There are full time and part time positions.

Assistant Pastor/Creative Director/Youth Pastor  
Operations Manager  
Student Worker  
Finance Assistant  
Minis Leader (supported by the Joshua Centre)  
The Brewery Leader (supported by the Joshua Centre)

We also had 3 Volunteer Ministry Assistants in 2022.

In 2020 we were awarded funding from church commissioners for the Liverpool Next Generation project which has thrived in 2022. This includes the employment of the following positions

LNG Administrator & Social Media Co-ordinator  
Lead Schools Missional Chaplain  
School Chaplain



## Lead University Chaplain

University Chaplaincy Assistants (we have 4 part time positions based at StJ and 2 part time positions at Penny Lane Church)

Our staff team has seen some changes this year; Jennie left at the end of March to continue the next part of her curacy at St Michael's, Garston. Kirsty returned from maternity leave before Janet took over as full time Operations Manager in August. Michelle moved on as she felt called to serve in a different role with the vocations team in the diocese. Jerome, Bethan and Marcus returned to our StJ family with Jerome starting his curacy. We said goodbye to our ministry assistants, Henry, Titus, Samuel and John. Rebecca joined us as our LNG Admin and Social Media Coordinator and we celebrated three new Ministry Assistants – Sophie, Oli and Josiah. We also welcomed Gaby, Bethan and Ellie to the university chaplaincy team as chaplain assistants. Jude continues as Vicar and Matt Courtney as Associate Pastor and Creative Director. Becky Courtney's role has moved from Families Worker to full time Schools Missional Chaplain. Matty Bentley continues as the Lead Schools Missional Chaplain. Hannah Padfield still heads up our University Chaplaincy and Lois took over from John as our Student Worker and now leads The Brewery. She is still part of the University Chaplaincy and Finance teams. Rachel Harley continues as our Minis group leader.

## 4.3 Structure, Management & Governance

St. James PCC is a body corporate and operates under the Parochial Church Councils (Powers) Measure 1956 and the Church Representation Rules. The PCC is a regulated charity since June 2015, our charity number is 1162127.

It should be noted that the following charities share some common trustees with the PCC: LivServe and LivGrow. Both these charities are not currently in operation.

The method of appointment of PCC members is set out in the church Representation Rules, in that PCC members are elected annually at the APCM by members of the Electoral Roll. All church members are encouraged to register on the Electoral Roll and stand for election to the PCC.

PCC members receive induction training including trustee responsibilities, basic health and safety, risk assessment and management and child protection procedures.

The PCC has considered Risk Assessment to identify any major risks and established systems to mitigate those risks.

Health and Safety requirements are reviewed regularly by a knowledgeable person to enable the PCC to appraise risks and implement necessary compliance requirements. Procedures for recording accidents have been put in place.

The general functions of the PCC are stated within section 2 of the Parochial Church Councils (Powers) Measure 1956.

When planning our activities for the year, the PCC considered the Charity Commission's guidance on public benefit and, in particular, the specific guidance to charities concerned with the advancement of religion.



#### 4.4 Access, Inclusion & Policies

St James in the City is committed to access and inclusion in all its work. Janet Wightman is currently the safeguarding Co-ordinator, the safeguarding officer and vicar attended regular training arranged by Liverpool Diocese. All volunteers with children are also asked to complete online safeguarding training and conduct a DBS check. As well as the policies below StJ has numerous risk assessments which for 2020 included online activity. The following policies and procedures were updated;

- Discipline Procedure
- Environmental
- Equal Opportunities
- Maternity/Paternity
- Financial
- Fire Procedure
- Fire Risk Assessment
- Fire Safety Awareness
- Flu Policy
- Grievance Procedure
- Hazards Inventory
- Complaints
- Health and Safety
- Procurement
- Risk Assessment
- Safeguarding
- Extreme incident
- Flu
- Risk Assessment
- Babysitting
- Lone working
- Youth
- One to one working
- E Policy and Images

## 5. Finance

### 5.1 Finance Summary

#### 1. Donations

Due to the Coronavirus Pandemic and the Cost of Living Crisis, our donations have not increased in the way we would have hoped, when you compare it to the growth of the Church. We did not meet our giving target from Vision 2022 and we felt it was right not to push that due to the financial circumstance of the country.

#### 2. Parish Share

We were able to make a voluntary donation to parish share of £200 in 2007 £1,000 in 2008 £3,000 in 2009, £5,000 in 2010, £9,000 in 2011. In 2022, this has grown to £5,868 towards the curate's housing and £25,403 to parish share.

#### 3. St James Charitable Giving

Each year St James in the City decides to Tithe its income (donated giving). In 2013, the PCC increased their donations from 10 to 11% of donations received. Each successive year the percentage has increased. In 2016, this reached 14%. In 2017, the PCC decided to give 14% away in the usual way and the extra 1% put aside towards our church plant. In 2018, 14% was given away and 2% was given to the Church Plant. The intention is to continue to give both to church plants and other charities. Due to the coronavirus pandemic and stress on church finances, we gave away 14% which included the 2% for the church plant. The list of charities we donate to are below. They are split into International, student, justice, local, leadership and training and other.

##### International:

Chris and Liz White in Spain	£ 1,650
Jarod and Bexi in Croatia	£ 1,200
Wycliff - Kamuku Project	£ 200
Friends International	£ 200
<b>Total</b>	<b>£ 3,250</b>

##### Student:

UCCF Worker	£ 300
Individual Student Mission Trip	£ 100
Fusion	£ 300
<b>Total</b>	<b>£ 700</b>

**Justice:**

IJM	£ 300
Just Love National	£ 150
Just Love Liverpool	£ 150
Tear Fund	£ 300
<b>Total</b>	<b>£ 900</b>

**Local:**

Citizens UK	£ 1,000
4 Wings	£ 100
Victory Outreach	£ 100
Safer Families	£ 100
White Chapel	£ 100
Deanery Contribution	£ 1,000
<b>Total</b>	<b>£ 2,400</b>

**Leadership and Training:**

Past Ordinands	£ 225
UCB Bible Reading Notes	£ 100
<b>Total</b>	<b>£ 325</b>

**Extra 2022 Donations**

Chris & Liz White – Mission partners in Spain	£ 848
Save the Children Ukraine (Clothes Swap)	£ 204.83
Launch Service Collection: Tearfund Ukraine Appeal	£ 177
Church Plant	£ 7,000
<b>Total</b>	<b>£ 8,229.83</b>

**Total Giving in 2022**  
**(2021 tithe and extra 2022)**
**£ 15, 804.83**

Our total missional giving is 14% of our donations received in 2021.

In 2022 our total donated income was £89577.67 (standing orders, other planned giving, collections and one off individual unrestricted gifts) (2021:£108,839). The PCC has decided to give a percentage of this away to the church plant and to other charities. During 2023, at least £5500 will be distribute to charities, locally, nationally, and internationally, and £7000 to church plant fund.

#### 4. Grants

During 2022 the following Grants were either received or awarded to St James in the City. We are very grateful for the continued support.

Grants Received or Awarded		
	Fund	
Joshua Centre	(res) Brewery	£ 3,000
Joshua Centre	(res) Minis for 21/22	£ 4,000
Joshua Centre	(res) Minis for 22/23	£ 3,000
Scripture Readers	(res) Worship Pastor & Raising Leaders	£ 6,000
A J Shone	(res) Youth	£ 3,000
DMGF	(res) Ministry Assistants and Staffing	£ 7,000
LDBF	(res) Curate Housing	£ 5,900
MES	(res) Ministry Assistants	£ 1,000
LDBF	(res) Heating Grant	£ 1,000
LDBF	(res) LNG	£ 129, 410
	Total	£ 163, 310

#### 5. Building Project Grants

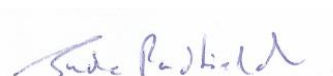
We received a grant for £3,500 from Veolia in 2022. This was in relation to the 2021 Building Project.

#### 6. Restricted Donations

Fund	
Foodbank	£ 10
Building Project	£62.50
The Whites in Spain	£400
STJ Kids	£110

#### 7. Declaration

On behalf of the PCC, this is a true representation of St James in the City



Rev'd Jude Padfield,  
Vicar

Date: 12/03/2023



Miss Janet Wightman  
Treasurer

Date: 12/03/2023

## 5.2 St James in the City Accounts

### 1. Statement of Financial Activity

**St James in the City**  
**Statement of Financial Activities**  
**For the period from 01 January 2022 to 31 December 2022**

	Unrestricted funds	Designated funds	Restricted funds	Endowment funds	Total funds	Prior year total funds
<b>Income and endowments from:</b>						
Donations and legacies	134,940.40	-	143,908.53	-	278,848.93	498,797.84
Income from charitable activities	1,283.19	-	-	-	1,283.19	10.00
Other trading activities	955.24	-	629.48	-	1,584.72	-
Investments	276.96	-	-	-	276.96	-
Other income	-	-	-	-	-	-
<b>Total income</b>	<b>137,455.79</b>	<b>-</b>	<b>144,538.01</b>	<b>-</b>	<b>281,993.80</b>	<b>498,807.84</b>
<b>Expenditure on:</b>						
Raising funds	1.65	-	-	-	1.65	760.73
Expenditure on charitable activities	143,589.43	-	158,697.89	-	302,287.32	485,465.60
Other expenditure	-	-	-	-	-	-
<b>Total expenditure</b>	<b>143,591.08</b>	<b>-</b>	<b>158,697.89</b>	<b>-</b>	<b>302,288.97</b>	<b>486,226.33</b>
<b>Net income / (expenditure) resources before transfer</b>	<b>(6,135.29)</b>	<b>-</b>	<b>(14,159.88)</b>	<b>-</b>	<b>(20,295.17)</b>	<b>12,581.51</b>
<b>Transfers:</b>						
Gross transfers between funds - in	3,860.68	7,000.00	1,624.07	-	12,484.75	-
Gross transfers between funds - out	(8,493.94)	(130.13)	(3,860.68)	-	(12,484.75)	-
<b>Other recognised gains / losses</b>						
Gains/losses on investment assets	-	-	-	-	-	-
Gains on revaluation, fixed assets, charity's own use	-	-	-	-	-	-
<b>Net movement in funds</b>	<b>(10,768.55)</b>	<b>6,869.87</b>	<b>(16,396.49)</b>	<b>-</b>	<b>(20,295.17)</b>	<b>12,581.51</b>
<b>Reconciliation of funds</b>						
<b>Total funds brought forward</b>	<b>25,673.98</b>	<b>43,130.13</b>	<b>70,171.60</b>	<b>-</b>	<b>138,975.71</b>	<b>126,394.20</b>
<b>Total funds carried forward</b>	<b>14,905.43</b>	<b>50,000.00</b>	<b>53,775.11</b>	<b>-</b>	<b>118,680.54</b>	<b>138,975.71</b>
<b>Represented by</b>						
Unrestricted						
General Fund	14,905.43	-	-	-	14,905.43	25,673.98
Designated						
Chaplaincy Other	-	-	-	-	-	130.13
Church Plant	-	35,000.00	-	-	35,000.00	28,000.00
Legal Reserves	-	15,000.00	-	-	15,000.00	15,000.00
Restricted						
Agency collection	-	-	-	-	-	-
Building Fund	-	-	-	-	-	-
Chaplaincy	-	-	1,689.44	-	1,689.44	19,506.51
Food Bank	-	-	-	-	-	1,324.38
Hardship	-	-	-	-	-	68.00
Liverpool Next Generation	-	-	43,781.45	-	43,781.45	42,399.57
Mission Giving	-	-	-	-	-	0.90
Parish Weekend	-	-	-	-	-	341.00
St J Mnis	-	-	3,297.95	-	3,297.95	794.82
The Brewery	-	-	5,006.27	-	5,006.27	5,736.42

## 2. Balance Sheet

St James in the City As at: 31 December 2022

### St James in the City Balance Sheet (Summary)

	As at 31/12/2022	As at 31/12/2021
<b>Fixed assets</b>		
	-	-
<b>Current assets</b>		
Debtors	6,080.00	6,080.00
Cash At Bank And In Hand	112,712.54	132,935.71
	<b>118,792.54</b>	<b>139,015.71</b>
<b>Liabilities</b>		
Creditors: Amounts Falling Due In One Year	112.00	40.00
	<b>112.00</b>	<b>40.00</b>
<b>Net current assets less current liabilities</b>	<b>118,680.54</b>	<b>138,975.71</b>
<b>Total assets less current liabilities</b>	<b>118,680.54</b>	<b>138,975.71</b>
<b>Liabilities</b>		
	-	-
<b>Total net assets less liabilities</b>	<b>118,680.54</b>	<b>138,975.71</b>
<b>Represented by</b>		
<b>Unrestricted</b>		
Unrestricted - General Funds	14,905.43	25,673.98
<b>Designated</b>		
Designated - Chaplaincy Other	-	130.13
Designated - Church Plant	35,000.00	28,000.00
Designated - Legal Reserves	15,000.00	15,000.00
<b>Restricted</b>		
Restricted - Chaplaincy	1,689.44	19,506.51
Restricted - Food Bank	-	1,324.38
Restricted - Hardship	-	68.00
Restricted - Liverpool Next Generation	43,781.45	42,399.57
Restricted - Mission Giving	-	0.90
Restricted - Parish Weekend	-	341.00
Restricted - St J Minis	3,297.95	794.82
Restricted - The Brewery	5,006.27	5,736.42
<b>Fund Totals</b>	<b>118,680.54</b>	<b>138,975.71</b>

### 3. Note to the Financial Statement

#### Note 1:

##### a. Accounting policies

The financial statements have been prepared in accordance with applicable accounting standards; the Statement of Recommended Practice "Accounting by Charities" (the "SORP") issued in 2005 and in accordance with the Church Accounting Regulations 2006.

The financial statements have been prepared under the historical cost convention except for the valuation of assets which are shown at market value. The financial statements include all transactions assets and liabilities for which the PCC is responsible in law.

##### b. Incoming resources

Planned giving, collections and donations are recognised when received. Tax refunds are recognized when the incoming resource to which they relate is received. Grants and legacies are accounted for when the PCC is legally entitled to the amounts due. Dividends are accounted for when receivable, interest is accrued. All other income is recognised when it is receivable. All incoming resources are accounted for gross.

##### c. Resources expended

All costs are allocated between the expenditure categories of the SOFA on a basis designed to reflect the use of that resource. Grants and donations are accounted for when paid over, or when awarded, if that award creates a binding or constructive obligation on the PCC. The diocesan parish share is accounted for when due. Amounts received specifically for mission are dealt with as restricted funds. All other expenditure is generally recognized when it is incurred and is accounted for gross.

##### d. Funds

Restricted Funds – (a) income from trusts or endowments which may be expended only on those restricted objects provided in the terms of the trust or bequest, and (b) donations or grants received for a specific object or invited by the PCC for a specific object. The funds may only be expended on the specific object for which they were given. Any balance remaining unspent at the end of each year must be carried forwards as a balance on that fund. The PCC does not usually invest separately for each fund. Where there is no separate investment, interest is apportioned to individual funds on an average balance basis.

Unrestricted Funds – These are funds which may be used for general PCC purposes without any external restriction.

##### e. Fixed Assets

Restricted Consecrated and benefice property is not included in the accounts in accordance with s.96(2)(a) of the Charities Act 1993. Movable church furnishings held by the vicar and churchwardens

on special trust for the PCC and which require a faculty for disposal are inalienable property, listed in the church's inventory, which can be inspected (at any reasonable time). For anything acquired prior to 2000 there is insufficient cost information available and therefore such assets are not valued in the financial statements. Subsequently no individual item has cost more than £1000 so all such expenditure has been written off when incurred.

## Note 2: Voluntary income

Planned donations from individual via standing orders or other planned giving totalled £87,816.50 (2021:£104,410.25). Other donations (cash donations) from individuals totalled £1,760.17 (2021:£136). Restricted donations totalled £964.33 (2021: £21,878). Gift Aid (from donations in 2021) totalled £21,206 (2021:£24,332.96)

## Note 3: Investment income

There was £276.96 investment income received from our credit union (2021:£0).

## Note 4: Other income generated

There was £1,445 other income generated (2021: £0).

## Note 5: Cost of generating income

Total contracted staffing cost for the year, relating to generating income, amounted to £0 (2021:£755).

## Note 6: Staff Cost

Total staffing costs for the year amounted to £180,828.08 this includes costs towards HMRC and pensions (2021:£181,790). LDBF give us a grant to cover the cost of the Chaplaincy salaries and LNG salaries.

Staff Costs	
St James in the City	£ 65,418.37
Minis	£ 3,770
Brewery	£ 3,822.09
Chaplaincy	£ 9,982.22
LNG	£ 97,427.74

## Note 7: Payment to PCC members

No payments were made to any PCC members.

## Note 8: Liabilities and Debtors

We are still waiting £6080 to come into the account for Chaplaincy from LBDF (2021: £6080)

## Note 9: Funds



The restricted funds comprise of Youth, Chaplaincy, Minis, Brewery, Mission Giving, Hardship, Building, LNG, Church Plant and Foodbank. The Mission Giving Fund represents funds from donations in support of the mission work of The White Family, members of the congregation working in Spain. The Chaplaincy Fund is the money from LDBF to pay for some of the Chaplains.

We have also created a designated fund for our legal reserves.

**Note 10: Loans**

STJ currently have no outstanding loans.

## 4. Analysis of income and expenditure

### St James in the City

#### Analysis of income and expenditure Selected period: 01 January 2022 to 31 December 2022

	General	Designated	Restricted	Endowment	This year	Total Last year
<b>Income and endowments from:</b>						
<b>Donations and legacies</b>						
0101 - Gift Aid - Parish Giving Scheme	-	-	-	-	-	-
0102 - Gift Aid - Bank (Standing Orders)	76,469.78	-	537.50	-	77,007.28	92,807.78
0110 - Gift Aid - Envelopes	100.00	-	-	-	100.00	3,830.00
0201 - Other planned giving - Parish Giving Scheme	-	-	-	-	-	-
0202 - Other planned giving - Bank (Standing Orders)	11,436.72	-	40.00	-	11,476.72	25,047.27
0210 - Other planned giving - Envelopes	142.00	-	45.00	-	187.00	-
0301 - Loose plate collections (GASDS eligible)	1,200.59	-	257.92	-	1,458.51	362.80
0305 - Loose plate collections (not GASDS eligible)	-	-	-	-	-	-
0310 - Retiring collections	-	-	-	-	-	-
0320 - One-off Gift Aid donations (declaration on envelope)	252.22	-	-	-	252.22	-
0401 - Gift days	-	-	-	-	-	-
0405 - Ad-hoc donations: non Gift Aid (GASDS eligible)	28.42	-	-	-	28.42	497.00
0410 - Giving through church boxes	-	-	-	-	-	-
0415 - Ad-hoc donations: non Gift Aid (not GASDS eligible)	-	-	-	-	-	-
0420 - One-off Gift Aid donations	-	-	118.40	-	118.40	15,914.80
0450 - Special or specific appeals etc.	-	-	-	-	-	-
0601 - Tax recoverable on Gift Aid	20,835.76	-	-	-	20,835.76	24,332.96
0610 - GASDS Tax relief	370.08	-	-	-	370.08	-
0701 - Legacies	-	-	-	-	-	-
0801 - Recurring grants	22,900.00	-	103,031.19	-	125,931.19	20,000.00
08A1 - Non-recurring one-off grants	1,000.00	-	39,878.52	-	40,878.52	316,005.23
0901 - Fundraising (general)	204.83	-	-	-	204.83	-
<b>Donations and legacies Totals</b>	<b>134,940.40</b>	<b>-</b>	<b>143,908.53</b>	<b>-</b>	<b>278,848.93</b>	<b>498,797.84</b>
<b>Income from charitable activities</b>						
1101 - Parish fee for wedding or funeral	388.63	-	-	-	388.63	-
1110 - Churchyard maintenance fee	-	-	-	-	-	-
1210 - Bookstall sales to promote objectives	39.56	-	-	-	39.56	-
1230 - Church or Hall lettings - objectives	575.00	-	-	-	575.00	-
1280 - Church event income	280.00	-	-	-	280.00	10.00
1290 - Branch organisations - receipts	-	-	-	-	-	-
<b>Income from charitable activities Totals</b>	<b>1,283.19</b>	<b>-</b>	<b>-</b>	<b>-</b>	<b>1,283.19</b>	<b>10.00</b>
<b>Other trading activities</b>						
0910 - Fundraising (Activities)	-	-	27.20	-	27.20	-
1220 - Bookstall sales - fund raising	-	-	-	-	-	-
1240 - Church or Hall lettings - fund raising	-	-	-	-	-	-
1250 - Magazine income - advertising	-	-	-	-	-	-
1260 - Magazine income - sales	-	-	-	-	-	-
1270 - Other funds generated	955.24	-	602.28	-	1,557.52	-
<b>Other trading activities Totals</b>	<b>955.24</b>	<b>-</b>	<b>629.48</b>	<b>-</b>	<b>1,584.72</b>	<b>-</b>

	General	Designated	Restricted	Endowment	This year	Total Last year
<b>Investments</b>						
1001 - Dividends from shares	276.96	-	-	-	276.96	-
1020 - Bank and building society interest	-	-	-	-	-	-
1025 - CBF Deposit account interest	-	-	-	-	-	-
1030 - Rent from leased lands or buildings	-	-	-	-	-	-
<b>Investments Totals</b>	<b>276.96</b>	<b>-</b>	<b>-</b>	<b>-</b>	<b>276.96</b>	<b>-</b>
<b>Other income</b>						
1310 - Insurance claims	-	-	-	-	-	-
1320 - Surplus - sales of fixed assets	-	-	-	-	-	-
1330 - Refunds from previous year expenditure	-	-	-	-	-	-
<b>Other income Totals</b>	<b>-</b>	<b>-</b>	<b>-</b>	<b>-</b>	<b>-</b>	<b>-</b>
<b>Income and endowments Grand totals</b>	<b>137,455.79</b>	<b>- 144,538.01</b>	<b>-</b>	<b>-</b>	<b>281,993.80</b>	<b>498,807.84</b>

**Expenditure on:****Raising funds**

1701 - Fees paid to fundraisers	-	-	-	-	-	755.35
1710 - Costs of applying for grants	1.65	-	-	-	1.65	5.38
1720 - Costs of giving envelopes and stewardship	-	-	-	-	-	-
1730 - Costs of fundraising events	-	-	-	-	-	-
1740 - Investment management costs	-	-	-	-	-	-
<b>Raising funds Totals</b>	<b>1.65</b>	<b>-</b>	<b>-</b>	<b>-</b>	<b>1.65</b>	<b>760.73</b>

**Expenditure on charitable activities**

1801 - Giving to missionary societies	2,518.00	-	-	-	2,518.00	3,674.00
1830 - Giving to relief and development agencies	-	-	-	-	-	-
1850 - Home mission	6,266.83	-	500.00	-	6,766.83	7,960.00
1870 - Secular charities	-	-	-	-	-	-
1890 - Alms	-	-	44.08	-	44.08	-
1910 - Deanery/Parish Share	25,402.92	-	-	-	25,402.92	25,403.02
2001 - Assistant staff costs (Lay/Youth Workers)	56,758.08	-	101,328.01	-	158,086.09	181,790.45
2010 - Salary of organist/musicians	-	-	-	-	-	-
2050 - Salary of administrator	-	-	-	-	-	-
2055 - PAYE, NI & Pension - Parish Admin & Support	4,404.31	-	13,719.11	-	18,123.42	-
2060 - Cleaner wage (church building)	-	-	-	-	-	-
2101 - Clergy working expenses	309.85	-	-	-	309.85	996.86
2120 - Council tax (clergy housing)	5,662.37	-	4,393.94	-	10,056.31	7,757.77
2130 - Housing expenses (clergy)	11,768.00	-	-	-	11,768.00	10,495.00
2140 - Water rates (clergy housing)	1,647.43	-	29.25	-	1,676.68	1,346.33
2150 - Telephone and broadband (clergy housing)	340.00	-	-	-	340.00	110.00
2160 - Sermon preparation materials and resources	144.70	-	-	-	144.70	-
2170 - Clergy training courses and education material	572.59	-	20.00	-	592.59	1,694.79
2180 - Reader expenses and subscriptions	75.00	-	-	-	75.00	-
2185 - Assistant Staff costs (Ministry)	1,226.65	-	847.02	-	2,073.67	3,300.00
2190 - Visiting speakers / locums	38.50	-	-	-	38.50	-
2201 - Parish mission and evangelism costs	-	-	-	-	-	93.50
2210 - Discipleship course costs (e.g. Alpha, etc.)	233.14	-	-	-	233.14	693.40

					Total	
	General	Designated	Restricted	Endowment	This year	Last year
2215 - Sunday Food	1,826.23	-	1,741.72	-	3,567.95	1,956.74
2220 - Sunday School & Junior Church costs	323.19	-	-	-	323.19	441.09
2225 - Students	734.04	-	326.59	-	1,060.63	1,695.52
2230 - Youth & Confirmation groups/organisations	556.45	-	-	-	556.45	304.18
2245 - Family Events	597.29	-	-	-	597.29	234.16
2250 - General Mission/Support activities <sup>27</sup>	30.00	-	4.95	-	34.95	27.00
2260 - STJ Minis	-	-	985.10	-	985.10	989.30
2270 - Food Bank	-	-	1,334.38	-	1,334.38	17,688.85
2280 - Uni Chaplaincy Events	-	-	6,776.37	-	6,776.37	24.75
2281 - LNG Football Ministry	-	-	2,255.40	-	2,255.40	(113.49)
2290 - LNG-General	-	-	14,805.18	-	14,805.18	33,013.24
2301 - Insurance premiums (church building)	2,591.97	-	-	-	2,591.97	1,800.00
2310 - Telephone (church building/parish office)	268.80	-	-	-	268.80	907.20
2320 - Organ / piano tuning and maintenance	-	-	-	-	-	-
2330 - Church building maintenance (routine)	1,928.77	-	150.00	-	2,078.77	309.52
2331 - Cleaning materials & equipment (church building)	402.47	-	1.32	-	403.79	-
2335 - Church equipment costs	824.92	-	85.71	-	910.63	17,699.38
2340 - Upkeep of services	1,557.21	-	-	-	1,557.21	1,147.71
2345 - Church consumable items	3,115.13	-	436.57	-	3,551.70	6,543.70
2350 - Upkeep of churchyard	511.79	-	-	-	511.79	-
2360 - Administration costs for parish	1,218.60	-	-	-	1,218.60	1,555.01
2361 - Governance costs & examination/audit fee	26.00	-	-	-	26.00	-
2362 - Banking charges	-	-	-	-	-	-
2401 - Church building - electric	8,437.23	-	3,320.36	-	11,757.59	1,002.63
2410 - Church building - gas	-	-	-	-	-	-
2420 - Church building - water	786.91	-	-	-	786.91	85.99
2430 - Church building - oil (heating system)	-	-	-	-	-	-
2501 - Magazine expenses including printing costs	320.07	-	-	-	320.07	-
2510 - Bookstall costs including new stock	53.99	-	-	-	53.99	-
2515 - Other trading expenditure	-	-	1,978.10	-	1,978.10	(330.00)
2520 - Hall/Other building - oil (heating system)	-	-	-	-	-	-
2530 - Hall/Other building - electricity	-	-	-	-	-	-
2540 - Hall/Other building - gas	-	-	-	-	-	-
2550 - Hall/Other building - insurance premiums	-	-	-	-	-	-
2560 - Hall/Other building - maintenance (routine)	-	-	-	-	-	-
2565 - Hall/Other building - equipment costs	-	-	-	-	-	-
2570 - Hall/Other building - telephone and broadband	-	-	-	-	-	-
2580 - Hall/Other building - water rates	-	-	88.76	-	88.76	-
2585 - Hall/Other building - consumables	10.00	-	-	-	10.00	-
2590 - Hall/Other building - cleaning costs	-	-	25.97	-	25.97	-
2595 - PAYE, NI & Pension - Hall/Community centre	-	-	-	-	-	-
2599 - Branch Organisation - payments	-	-	-	-	-	-
2701 - Church building major repairs - structure	-	-	3,500.00	-	3,500.00	153,268.00
2710 - Church building major repairs - installation	100.00	-	-	-	100.00	-
2720 - Church building interior and exterior decoration	-	-	-	-	-	(100.00)
2801 - Hall/Other building major repairs - structure	-	-	-	-	-	-
2820 - Hall/Other building major repairs - installation	-	-	-	-	-	-
2830 - Hall/Other building interior and exterior decoration	-	-	-	-	-	-
2840 - Other PCC property upkeep	-	-	-	-	-	-
2910 - New building - house for clergy	-	-	-	-	-	-
2920 - New building Church	-	-	-	-	-	-
2930 - New building Hall/Other	-	-	-	-	-	-

	General	Designated	Restricted	Endowment	This year	Total Last year
<b>Expenditure on charitable activities Totals</b>	<b>143,589.43</b>	<b>-</b>	<b>158,697.89</b>	<b>-</b>	<b>302,287.32</b>	<b>485,465.60</b>
<b>Other expenditure</b>						
<b>Other expenditure Totals</b>	<b>-</b>	<b>-</b>	<b>-</b>	<b>-</b>	<b>-</b>	<b>-</b>
<b>Expenditure Grand totals</b>	<b>143,591.08</b>	<b>-</b>	<b>158,697.89</b>	<b>-</b>	<b>302,288.97</b>	<b>486,226.33</b>

## 5.3 Independent Examiners Report

Report to the Parochial Church Council (PCC) of St James in the City on the accounts for the year ended 31<sup>st</sup> December 2021, as set out on pages 20–32 of the Annual Report.

### Respective responsibilities of Trustees and Examiner

The PCC are responsible for the preparation of the accounts. They consider that an audit is not required for this year under section 144 of the Charities Act 2011 (The Charities Act) and that an independent examination is needed.

It is my responsibility as examiner to:

- examine the accounts under section 145 of the 2011 Charities Act;
- to follow the procedures laid down in the general Directions given by the Charity Commission under section 145(5)(b) of the 2011 Act; and
- to state whether particular matters have come to my attention.

### Basis of independent examiner's statement

My examination was carried out in accordance with general Directions given by the Charity Commission. An examination includes a review of the accounting records kept by the PCC and a comparison of the accounts presented with those records. It also includes consideration of any unusual items or disclosures in the accounts and seeking explanations from the PCC concerning any such matters. The procedures undertaken do not provide all the evidence that would be required in an audit, and consequently no opinion is given as to whether the accounts present a 'true and fair' view and the report is limited to those matters set out in the statement below.

### Independent examiner's statement

In connection with my examination, no matter has come to my attention:

- 1) which gives me reasonable cause to believe that, in any material respect, the requirements:
  - to keep accounting records in accordance with section 130 of the Charities Act;
  - to prepare accounts which accord with the accounting records and comply with the accounting requirements of the Charities Act have not been met; or
- 2) to which, in my opinion, attention should be drawn in order to enable a proper understanding of the accounts to be reached.

Name of Independent Examiner: Sarah Felton

Date: 12/03/2023

