



Charity Number 1161913

Thomas Theyer Foundation (TTF)

Annual Report for the year ended 31st March 2022

Introduction

This is the Annual report of the Thomas Theyer Foundation for the year ending 31st March 2022.

Trustees

Alan David Theyer

Aimee Frances Theyer

Angela Lucille Crawford

Jill Denardo (appointed during reporting period - July 2021)

Edith Sarah Charlesworth (newly appointed – July 2022)

Registered office

1, London Road, Buxton, Derbyshire. SK17 9PA

Accountants

Kendrew Pine, 29, Park Street, Macclesfield, Cheshire. SK11 6SR

Bankers

Santander, Bridle Road, Bootle, L30 4GB

Introduction

The Thomas Theyer Foundation (TTF) was set up following the death of Thomas Samuel Theyer. Thomas was 18 on June 7th, 2013; he died six weeks later Friday July 19th, 2013. At primary school Thomas was diagnosed as having Dyspraxia and Attention Deficit Disorder (ADD). Dyspraxia affects fine and/or gross motor skills and general coordination additionally people with Dyspraxia may have difficulty with planning and organising, speech, general perception and thought process. TTF was founded by Thomas's family following his death with the aim of supporting other children and young people like Thomas and their families.



The focus of the charity is the **Physical and Mental Health** of its beneficiaries.

- Children and Young People (CYP) with Special Educational Needs (SEN) and those experiencing Difficult Life Circumstances (DLC) and their families.

Our Vision

- Children and Young People (CYP) with Special Educational Needs (SEN) and and/or Difficult Life Circumstances (DLC) are given the opportunity to access outdoor activities to benefit their physical and mental health and wellbeing.
- The families, of these CYP, can enjoy and benefit from respite breaks.
- These families have access to mental health wellbeing support.
- These families are provided with, signposting, help and guidance so they can access appropriate support for their children during compulsory education and thereafter in finding appropriate support and/or employment opportunities.

Our mission is:

To support children and young people with SEN or DLC, their families/carers so that they can develop and maximise their potential, future happiness, and wellbeing.

Public Benefit Statement

The trustees have given careful consideration to the Charity Commission's general guidance on public benefit. The Thomas Theyer Foundation will provide services to children and young people with Special Educational Needs and/or Difficult Life Circumstances, their families and/or carers within the aims and objectives of the charity.

Public Need

During the reporting period the charity has substantially developed its Therapeutic Services, which had been halted by the Covid-19 Pandemic.

The rise in Children and Young Peoples (CYP) mental health difficulties is both nationally and locally recognised. As is the pressure this puts on services. TTF works to support CYP in the High Peak, who otherwise would not be able to access mental health support as their difficulties would not be classed as serious enough. By providing Therapeutic Services, TTFs aim is to provide early intervention and reduce the likelihood of a CYP having further, more serious, mental health difficulties.

National Statistics

- Just under 1.5 million pupils in England have Special Educational Needs (SEN). This is an increase of 77,000 from 2021
Special educational needs in England, Academic Year 2021/22 – Explore education statistics – GOV.UK (explore-education-statistics.service.gov.uk)
- Rates of probable mental disorders have increased from 1 in 9 (6–16-year-olds), to 1 in 6 and in 17 – 19-year-olds from 1 in 10, to 1 in 6.
Mental Health of Children and Young People in England 2021 - wave 2 follow up to the 2017 survey - NHS Digital
- 10.6% of 6 – 16-year-olds missed more than 15 days of schooling (Autumn term 2020). Of these it is estimated that children with a probable mental disorder were twice as likely to have missed this much school.
Mental Health of Children and Young People in England 2021 - wave 2 follow up to the 2017 survey - NHS Digital

Local picture

The most recent data from Derbyshire Healthcare NHS Foundation Trust for the High Peak states the average waiting time for an appointment with Child and Adolescent Mental Health Services (CAHMS) is 18 weeks. We have engaged with the parents, of children in our service, and they tell us that the wait times can be far longer than this. In the High Peak we are aware it can be 8 months or more before a child, with lower levels of CAHMS tier of mental health concerns. Many of the children in our area who miss school or struggle with their mental health, are unlikely to be seen quickly by over stretched services.

By providing this important early intervention and reducing the probability of their problems and worries exoculating we support our local services in reducing longer term more serious referrals.

Constitution and Charity Governing Document

The Thomas Theyer Foundation is a Charitable Incorporated Organisation and was registered on 1st June 2015. The Governing Document prepared for registration has been reviewed in 2019. A copy of the Constitution can be requested from the trustees.

Charitable objects

- A) For the public benefit to relieve the needs of and to promote and protect the good health and well-being of:
- Young people with additional needs such as Attention Deficit Disorder (ADD), Attention Deficit Hyperactivity Disorder (ADHD) and/or Autism Spectrum Disorders (ADD) and their families/carers.
 - Young people who have difficult life circumstances such as but not limited to 'young carers.'
- B) To relieve the needs of children and young people with additional needs and /or difficult life circumstances, in particular but not exclusively, by developing their self-awareness, confidence and improving their health and well-being through fitness and outdoor activities.
- C) To relieve those in need of assistance in particular by providing respite opportunity for families with children with additional needs or other family members who require adapted accommodation facilities.
- D) To promote the social inclusion of children and young people with additional needs and/or difficult life circumstances by such charitable means as the trustees see fit.
- E) To relieve those in need, in particular but not exclusively, by providing information and support for the families/carers of young people with additional needs.
- F) To advance the education of the public in relation to the needs of young people with additional needs particularly, but not exclusively, by providing training, practical advice, and information.
- G) To advance education for the public benefit, in particular but not exclusively, by encouraging and promoting opportunities for young people with additional needs to access employment and training.

OUR MAJOR PROJECTS

1. The Thomas Theyer Support Centre

The charity is looking for premises for a support centre, where families/carers can come for signposting, counselling, and other support. In the interim counselling is available in Buxton and on-line for children and young people with SEN or DLC and their families.

Whilst plans for a permanent support centre remain a long-term objective for the charity, in the interim our focus has been to develop our Therapeutic Services, in the main counselling for our beneficiaries. In 2019, a suitable room to rent, on a daily use basis, was found at a newly build retirement complex and some counselling, with parents, had started. Due to the outbreak of COVID-19 the room was withdrawn, and we were left with no premises to deliver counselling.

In December 2020 we secured use of a ground floor premises to rent at a reduced rental, in Buxton. This provided much needed socially distanced office space and a small counselling room. This lease was renewed for a further 12 months in December 2021 and has been central to the development and expansion of Counselling Services provision.

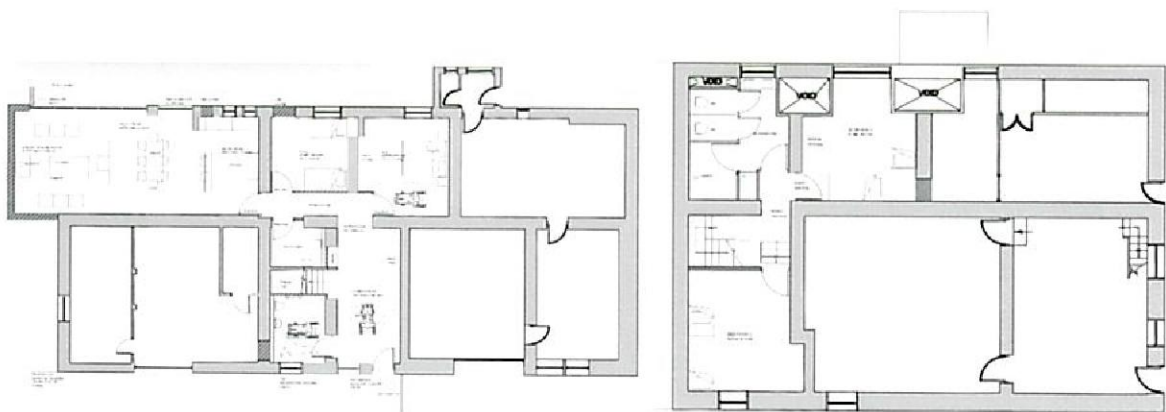
2. The Thomas Theyer Cottage at White Hall Outdoor Education Centre

The charity is working with White Hall Outdoor Education Centre, in Buxton in the Peak District of Derbyshire, to renovate and extend an unused cottage at the centre. This would then provide standalone accommodation suitable for CYP with SEN or DLC to stay, so they can enjoy and benefit from residential outdoor activity breaks. The cottage would also be available to the charity for respite family breaks.



As per a Service Level Agreement between TTF and DCC, TTF is supporting the development of the cottage, which will be named the Thomas Theyer Cottage, and has been designed to accommodate the needs of the charity beneficiaries. The overall responsibility for the fundraising for the work rests with White Hall and its recently formed charity 'The Friends of White Hall'.

Claire Wilde of Slater Wilde Architects, volunteering for the charity, has drawn plans for alterations and extension of the cottage. Submission of planning permission was delayed due to a review, by Derbyshire County Council (DCC), owners of White Hall Centre, of their property portfolio. This will be reviewed in the next financial period.



Operating Review

Therapeutic Services

Following easing of lockdown restrictions, the service moved from an initial emphasis on online counselling to face to face counselling, at the charity's office and in schools. The charity has seen more and more demand for counselling. Many of the children it supports struggle with emotional difficulties, and this has been exacerbated by Covid-19. These CYP are unlikely to be seen quickly by over stretched services in the area with wait lists for CAMHS being as much as 8 months.



A temporary administration role was funded by a government grant as part of the Kickstart programme. This role was essential and the need for a permanent Services Coordinator, a future requirement.

In addition to funded counselling the charity has introduced a subsidised rate for schools, services (such as social services and family support), and for parents who do not wish to wait for a funded place to be available for their child. This subsidised rate is also available for counselling for parents. The charity has also started to offer counselling to the wider community. This contributed a small, first year income from counselling of £1,436.

The charity continually seeks funding for counselling, to ensure on-going provision of this much needed service in the area, and for the development of other Therapeutic Services. The charity operates with a small permanent staff. Funding for personnel is key to the ability of the charity to develop the service in the longer term.

Outdoor Activities



In 2019 we secured funding for Outdoor Activity Days at White Hall Centre in Buxton. This was funded by the South West Peak Landscape Partnership Community Grants (National Lottery Heritage Fund). Due to the Covid-19 restrictions activity was halted whilst the centre was closed. Some groups were able to attend in 2020, and three groups attended during this reporting period. This project was even more significant this year due to the repeated lockdowns and restrictions. CYP with SEN and DLC found themselves separated from their peers and spent more time inside. From the pre activity participant information it was evident that many of these CYP, were feeling 'low' and having what was described as 'emotional needs'.

Access to outdoor activities is not always easily available to our beneficiary groups and this project provided a positive experience for the groups who were able to attend. Feedback includes an increase in the participants communication, resilience and confidence. Further funding for outdoor activities will be again sought for the next financial year.

The Thomas Theyer Foundation Sports and Outdoor Charity Shop



TTF's Sports and Outdoor Charity shop in Buxton re-opened on April 12th, 2021, following the easing of social restrictions. The objective of the shop (opened in December 2017) was to increase awareness of the charity, provide an initial office space and generate a small revenue stream. Prior to this the founders of the charity had provide a small office space at their home at their cost. This was no longer tenable. With the introduction of the TTF counselling service the charity acquired a separate office with counselling room at the end of 2020.

The shop remains key to local awareness, it has become established and promotes recycling, affordable sports and outdoor clothing and equipment in the area. It has developed a partnership with outdoor clothing company Alpkit and is looking to further develop similar partnerships. During lockdowns the charity started to increase on-line sales and this is an area for further development. [Continuum Project](#) | [Creating a Circular Economy](#) | [Alpkit](#)

A short film featuring the shop was made by local outdoor enthusiast and supporter of the charity, Harrison Thom.

[Where to buy BUDGET FRIENDLY gear | Thomas Theyer Sports & Outdoors Charity Shop - Buxton - YouTube](#)

An apprentice was taken on during his financial year and we received a £1,500 incentive payment during the reporting period for this apprenticeship.

Above the shop is a 7 room apartment with a separate side entrance. Initial discussions with the landlord have identified that the purchase of the building would be possible for the charity and this would provide office space and therapy rooms, along with securing tenure of the shop. This is to be further investigated in the next financial year.

Fundraising and Events

Restricted grants received during the reporting period accounted for £14,119 of income.

We held our annual Remembering Thomas campaign for schools in the summer and, in December 2021, we were able to hold our first community event since restrictions had been in place, our Lake of Lights commemorative evening for loved ones lost. Harrison Thom film available on YouTube..

[Buxton 'Lake of Lights' 2021 | The Thomas Theyer Foundation - YouTube](#)



Income from Events and Campaigns accounted for £12,378.

In February 2022 a Fundraising and Events Manager was appointed. The focus for income generation in 2022/2023 is funding grant applications for both CORE and Charitable Activity projects.

REVIEW OF CHARITABLE ACTIVITIES.

During the reporting period £39,528 was spent on Charitable Activities for our beneficiaries.

- 439 counselling sessions were delivered supporting 58 beneficiaries.
- 3 outdoor activity days took place benefitting 35 CYP with SEN/DLC.

This is a significant increase in providing services and support for our beneficiaries, which were restricted the previous year due to Covid-19.

Financial Review

Total income during the year was £90,404

£35,741 from General Donations, Grants and Fundraising Events and Campaigns - £14,119 of this was restricted income.

£11,994 from employment grants/support and furlough final payment, all restricted for wages.

£1,436 from counselling service income

£36,460 from shop trading income, contribution to the main charity (after shop expenditure), £1,479

£4,763 received from the borough council as part of their Covid Grants Scheme.

Nominal bank interest reported £10

Total expenditure during the year was £98,829

Resulting in a deficit of £8,425 (excluding restricted income from 2020/21).

Increased expenditure was incurred due to surge in charitable activities, which had been halted in 2020/21 because of Covid-19 restrictions.

Restricted Funds

£25,520 of unused restricted income at the end of 2020/21 was brought forward and used in 2021/22 for charitable activities.

Balance of restricted income at the end of 2021/22 £5,162

Contribution towards Charitable Activities

Income (less shop trading)	£53,944
Shop contribution to activities after shop expenditure	£ 1,479
Restricted income from 2020/21	£25,520
Total income available for charitable work and other expenditure (excluding the shop)	£80,943

Of the £80,943 available income £39,528 was spent on Charitable Activities – 49% of income.

The Balance Sheet showed total funds of £130,351 of which £5,162 are restricted funds.

Designated Funds

The following funds are designated to projects:

£50,000 for The Thomas Theyer Foundation Support Centre.

£5,000 for Planning Permissions for the Thomas Theyer Foundation Cottage at White Hall.

Reserves Policy

The charities reserves policy is equivalent to six months operating costs - calculated at £29,000

Volunteers and Supporters

The trustees wish to thank all those who helped and supported the charity during the reporting period. Thanks to all those who took part in our Remembering Thomas campaign, helped at our Lake of Lights events, and all those who have fundraised for the charity.

Signed on behalf of the Trustees



Alan Theyer

Date 24/1/23



CHARITY COMMISSION
FOR ENGLAND AND WALES

Charity Name
Thomas Theyer Foundation

No (if any)
1161913

Receipts and payments accounts

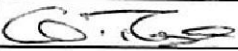
CC16a

For the period from	Period start date	To	Period end date
	01/04/2021		31/03/2022

Section A Receipts and payments

	Unrestricted funds to the nearest £	Restricted funds to the nearest £	Endowment funds to the nearest £	Total funds to the nearest £	Last year to the nearest £
A1 Receipts					
General Donations	9,244		-	9,244	34,603
Events & Campaigns	12,378	-	-	12,378	-
Bank Interest	10	-	-	10	154
Funding Grants		14,119	-	14,119	-
Employment Grants		7,043	-	7,043	-
Shop Income	36,460	-	-	36,460	18,527
Counselling Income	1,436	-	-	1,436	-
Other Income	-	-	-	-	1,350
Job Retention Scheme		4,951	-	4,951	9,978
Council Covid Grant	4,763	-	-	4,763	19,669
	-	-	-	-	-
Sub total (Gross income for AR)	64,291	26,113	-	90,404	84,281
A2 Asset and investment sales, (see table).					
	-	-	-	-	-
	-	-	-	-	-
Sub total	-	-	-	-	-
Total receipts	64,291	26,113	-	90,404	84,281
A3 Payments					
Charitable Activities	18,082	21,446	-	39,528	1,024
Fundraising & Events	2,125	-	-	2,125	2,714
Marketing	-	625	-	625	-
Admin Expenses & Stationery	3,796	2,293	-	6,089	1,227
Salaries & Wages	21,680	16,594	-	38,274	37,323
Professional Fees	1,476	-	-	1,476	2,018
Trading Expenses	-	-	-	-	1,989
Rent, Utilities & Insurance	2,243	4,400	-	6,643	6,052
Other Expenses	3,009	1,060	-	4,069	2,044
	-	-	-	-	-
Sub total	52,411	46,418	-	98,829	54,391
A4 Asset and investment purchases, (see table)					
Furniture & Equipment	-	-	-	-	918
	-	-	-	-	-
Sub total	-	-	-	-	918
Total payments	52,411	46,418	-	98,829	55,309
Net of receipts/(payments)	11,880	- 20,305	-	- 8,425	28,972
A5 Transfers between funds	-	-	-	-	-
A6 Cash funds last year end	113,756	25,020	-	138,776	-
Cash funds this year end	125,189	5,162	-	130,351	28,972

Section B Statement of assets and liabilities at the end of the period

Categories	Details	Unrestricted funds to nearest £	Restricted funds to nearest £	Endowment funds to nearest £
B1 Cash funds	Current Account	19,043	5,162	-
	Deposit Accounts	102,020	-	-
	Shop Account	4,126	-	-
	Total cash funds	125,189	5,162	-
	(agree balances with receipts and payments account(s))	OK	OK	OK
B2 Other monetary assets	Details	Unrestricted funds to nearest £	Restricted funds to nearest £	Endowment funds to nearest £
		-	-	-
		-	-	-
		-	-	-
		-	-	-
		-	-	-
		-	-	-
B3 Investment assets	Details	Fund to which asset belongs	Cost (optional)	Current value (optional)
			-	-
			-	-
			-	-
			-	-
			-	-
B4 Assets retained for the charity's own use	Details	Fund to which asset belongs	Cost (optional)	Current value (optional)
			-	-
			-	-
			-	-
			-	-
			-	-
			-	-
			-	-
			-	-
			-	-
B5 Liabilities	Details	Fund to which liability relates	Amount due (optional)	When due (optional)
	PAYE		-	
			-	
			-	
			-	
			-	
Signed by one or two trustees on behalf of all the trustees		Signature	Print Name	Date of approval
			ALAN THYER	24/1/23



Section A

Independent Examiner's Report

**Report to the trustees/
members of**

Charity Name

The Thomas Theyer Foundation

**On accounts for the year
ended**

31st March 2022

**Charity no
(if any)**

1161193

Set out on pages

1-2

(remember to include the page numbers of additional sheets)

I report to the trustees on my examination of the accounts of the above charity ("the Trust") for the year ended

**Responsibilities and
basis of report**

As the charity trustees of the Trust, you are responsible for the preparation of the accounts in accordance with the requirements of the Charities Act 2011 ("the Act").

I report in respect of my examination of the Trust's accounts carried out under section 145 of the 2011 Act and in carrying out my examination, I have followed the applicable Directions given by the Charity Commission under section 145(5)(b) of the Act.

**Independent
examiner's statement**

I have completed my examination. I confirm that no material matters have come to my attention (other than that disclosed below *) in connection with the examination which gives me cause to believe that in, any material respect:

- accounting records were not kept in accordance with section 130 of the Act or
- the accounts do not accord with the accounting records

I have no concerns and have come across no other matters in connection with the examination to which attention should be drawn in order to enable a proper understanding of the accounts to be reached.

** Please delete the words in the brackets if they do not apply.*

Signed:

Date:

24/01/2023

Name:

Liam McCarthy

**Relevant professional
qualification(s) or body
(if any):**

CIFPA - 1985

Address:

9, Bowden Lane, Chapel-en-le-Frith, High Peak, Derbyshire.

SK23 0JQ

Only complete if the examiner needs to highlight matters of concern (see CC32, Independent examination of charity accounts: directions and guidance for examiners).

Give here brief details of any items that the examiner wishes to disclose.

Nothing to report