



**Additional Needs and Disabilities**  
Information - Advice - Support - Empowerment

# ANNUAL REPORT 2022-23



**'Small Charity - Huge Impact'**



# CHAIRPERSON'S STATEMENT

Welcome to POINT's annual report for 2022-23!

This year has seen us all continue to face challenges with the rising cost of living and this intense pressure is also felt in the charity sector.

I am however, delighted to report that our continued focus on re-shaping POINT to ensure we can continue to deliver excellent service provision, has seen growth in the services we provide for families of children and young people aged 0-25 who have or may have additional needs and/or disabilities in Oldham.

I am particularly proud that POINT have been commissioned to deliver the SEND Mediation & Disagreement Resolution Service in Oldham, which we are reporting on for the first time. This is part of our long term ambition for POINT to be a "One Front Door" for SEND (Special Educational Needs and/or Disabilities) Services for families to access.

POINT have expanded outside of Oldham in 2022-23. I am delighted to share that we are now delivering the Special Educational Needs/Disabilities Independent, Advice, and Support Service (SENDIASS) in Blackpool.

When you read our annual report and the charity's outcomes, this is only achievable through the commitment, drive, enthusiasm, and tenacity of our teams, who continue to be wholly motivated through working with our members and representing their voice and their lived experience. They continue to passionately champion the rights of families, to drive change and shape better services to improve the lives and outcomes of children and young people with additional needs and/or disabilities aged 0-25.

On behalf of the Board of Trustees, I would like to thank you for your continued support and trust and I look forward to seeing you soon.

**DEREK RHODEN**

*Chair of the board of Trustees*



# OLDHAM PARENT CARER FORUM

## am's Coproduction Values

is sensitive to power imbalances, respectful and valuing of all contributions; it demands successful from all parties and a shared willingness to listen, understand and work towards common goals.

The infographic is titled 'am's Coproduction Values' and features a green header. Below the header, there are four main sections, each with a title and a list of bullet points. The sections are: 'Communicate' (with an icon of two people talking), 'Be Transparent' (with an icon of a person with a speech bubble), 'Be Accountable' (with an icon of two people standing), and 'Value Contributions' (with an icon of a person with a speech bubble). The bottom of the infographic has a green banner with the text 'together delivers better outcomes. We need each other to achieve'.

- Communicate**
  - Give me the time and information I need to prepare.
  - Inform me of what support is available to enable me to contribute.
  - Choose your language carefully and avoid abbreviations and jargon.
  - Involve me in the planning, design and delivery of support and take my views seriously.
  - Implement, maintain and update support.
  - Keep me involved & informed about outcomes and next steps.
- Be Transparent**
  - No surprises and No shocks.
  - Be open and honest.
  - Keep me updated.
  - Prepare me for meetings. An agenda is always useful.
  - No conversations behind closed doors.
  - Be clear about the level of engagement we are working at.
- Be Accountable**
  - Take ownership.
  - Be clear who is responsible & accountable for actions for actions.
  - Be clear about timesframes.
  - Be honest if something cannot be done.
  - Don't give false hopes.
  - Commit to participation and where things arise have a Plan B.
  - Ensure appropriate people relevant to the conversation are represented.
- Value Contributions**
  - Give my response.
  - I can't You.
  - My word that.
  - Exp app
  - Cher

together delivers better outcomes. We need each other to achieve

Oldham Parent Carer Forum has continued to represent parent/carer voice through different opportunities, which we have offered across Oldham. We have continued to listen to your feedback to ensure that families voices are heard in shaping the delivery of services and initiatives throughout 2022 – 2023.

As we recover from the global health pandemic, where our children and young people missed so much of their face-to-face education and development, we find ourselves in a cost-of-living crisis. Families living with special educational needs and disabilities were disproportionately affected and we wanted to help where we could. We successful received

grant funding to enable us to support families, offering shopping vouchers and were delighted to have supported well over 310 families during this phase.

"Always there to turn to whether it be a shoulder to cry on, someone to listen or to seek advice" - Parent

Families have had a wide range of opportunities to co-produce and participate through a variety of consultations and listening events this year. Families have coproduced the Short Breaks Play and Leisure Offer, the SEND & Inclusion Strategy and the Residents Charter. Our families have also had access to meet with Education, Health and Social Care Partners on a monthly basis at our cuppa and chat sessions.

We were also delighted to be able to open our Sensory Toy Lending Library which has been a huge success, enabling families to borrow sensory toys at no cost to support their child and young person.

The Forum has been involved again in various projects ensuring co-design, family feedback and voice being represented and delivery. These included the Autism in Schools project (where the forum is a strategic lead) which began its second phase, working with three mainstream primary schools in Oldham. The Forum is also working with partners looking at a project led by RSA to reduce exclusions which is a collaborative made up of several different services that work to support families. The Forum has also co-designed and delivered an Asthma Workshops to Health Professionals across the Northwest, ensuring the voice of children and young people and their families living with both asthma and special educational needs and/or disabilities were represented within this delivery.

## Sensory Toy Lending Library

Opens Monday 21st November 2022

Oldham Parent Carer Forum are delighted to announce the launch of their sensory toy lending library, with thanks to fledglings, who have provided all of the toys.

Our toy lending library has been created to provide an opportunity to loan toys free of charge to families within our forum.

These toys can be borrowed and enjoyed at home, just like books from a "regular" library for a maximum of 14 days

For more information and how to book...

# Impact and Outcomes

Oldham Parent Carer Forum staff and volunteers have continued to ensure that your voice continues to be heard and attend a variety of local, regional and national strategic workstreams.

*Bring people together and give people  
a voice - Parent*

We have continued to secure funding to support our most vulnerable in our community. A successful bid through action together enabled us to support families with ever increasing living costs with winter clothing and support with food. Over 310 families were supported through this time. Our Sensory Toy Lending Library has also removed barriers enabling families to borrow equipment from us.

*Allow people to talk, allow people to be  
listened to - Parent*

Our online events have continued to cover a range of supportive topics. This year we focused on SEN Law, empowering parents and carers across a range of themes from understanding SEN Support to Mental Capacity Act and Post 16, offering peer to peer support as well as reducing a feeling of isolation.

*Put together support of a lifetime  
- Parent*

**3173**

## MEMBERS

an increase of 17.4% in 2022-23

**2123**

## ENGAGEMENT OPPORTUNITIES

No of people attending online  
and face to face sessions

**108,968**

## FORUM NEWSLETTER

emails sent over the course of  
2022-23



# SENDIAS SERVICES



During this year, POINT have expanded our operation of SENDIAS Service delivery and whilst continuing to deliver the Oldham SENDIAS Service, we have also been successful in securing the contract to deliver the Blackpool SENDIAS Service.

POINT have taken the opportunity to review service funding and revise our structures to ensure that we can make deploy suitable resources to meet an ever increasing demand for Information, Advice and Support from Parents, Carers and Young People.

As a result of these changes, POINT now employ 6 SENDIASS officers across the Oldham and Blackpool services and the locality based teams are supported

by a Strategic SENDIASS lead, giving expert supervision, line management and strategic support to our service teams. This ensures we can continue to meet the National IASS Network minimum standards, which in turn support the delivery of a comprehensive Information, Advise and Support offer to our service user families.

" Very grateful to the help we have received and are still receiving. This has made a massive difference to my child within school"... parent carer

Our Oldham and Blackpool SENDIASS Teams have continued to benefit from a wide range of professional development opportunities, through the National SEND Law Conference, access to and attendance at IASS Network courses and through the strong commitment to the North West SENDIASS Consortium, which provides opportunities to share best practice with other providers and continually develop our service delivery models to reflect need and demand. from extensive training opportunities to support their role and are all qualified to the highest available standards for SEND Law.

Once again, POINT have invested in empowerment of families, offering a range of training opportunities to parents, carers, young people and practitioners, to ensure that children and young people can take up opportunities that are meaningful, provide the best outcomes and support the achievement of their aspirations and life chances.



# Impact and Outcomes

94% of service users said we had a good understanding of their needs offering appropriate support

Both the Oldham and Blackpool services have continued to see rising demand in 2022-23. In Blackpool service referrals increased by 169% and in Oldham by 69%.

This continued to evidence both the importance of having an accessible SEND Information, Advice and Support Service, and the high levels of trust and confidence in accessing SENDIASS provision provided by POINT.

98% of respondents said we offered them fair, neutral and unbiased information, advice and support

Our team continue to place co-production at the heart of developing and improving service provision. Regular reviews of service user feedback alongside a continued focus on the SENDIASS Minimum Standards ensures we identify and celebrate the strengths of the service as well as finding solutions to address and improvements identified by our service users. This has resulted in a 30% increase in service capacity in 2022-23 to ensure parents, carers and young people receive the right support at the earliest opportunity

93% of respondents said it was easy to contact the SENDIAS Service

2443

**REFERRALS**

96.5%

**WOULD RECOMMEND**  
our SENDIASS services

94%

**SATISFACTION**  
rating YOU gave our SENDIASS services

# POINT ACTIVITIES



During 2022-23 the Activities Team again delivered multiple activity sessions, Ability Wheelz cycling and special events such as the Accessible Colour Blast, Easter Egg Hunt and Halloween special. The team also carried out 4 trips to Blackpool; Chester Zoo; Gulliver's World and Drayton Manor. A total of 626 children, young people, parents and siblings were able to enjoy the trips as family units.

Ability Wheelz saw an increase in users and included a high number of groups from specialist provisions and adult social care.

The team has increased during this year and now employs 3 members of staff as well as welcoming 2 new volunteers.

*The young people have gained so much confidence and biking skills due to this inclusive centre which provides a safe environment where no one is discriminated against and are able to enjoy all the benefits of bike riding.*

The team had again been successful in securing further funding from the Angling Trust to secure the Accessible Fishing sessions and these will carry on into 2023/24. Well done to the team!

POINT Activities have been working in partnership with Oldham Parent Carer Forum delivering the Autism in Schools Project at Holy Cross Primary School. A 6-week package of child led activities was successfully delivered that included the children creating 1-page profiles, creative activities, Lego, challenge sessions and working together as a team. Due to the success of the project, phase 2 has been agreed and will be delivered later in the year.

The team worked with the Rocksteady Foundation to bring our children and young people together for a fun based musical event. They each had the opportunity to play instruments and sing. The team are hoping to be able to hold another musical extravaganza with the Foundation next year.





# Impact and Outcomes

The centre reopened in July 2022 following the successful completion of the planned refurbishment. Families and professionals have all commented on the difference this has made, enabling the centre to be more accessible to all users. Individual user hours increased during this period as well as 1,746 of group hours.

*94% of you said that our activities are excellent*

The team again delivered a range of child/young person led arts and craft activities attended by 150 children/young people. Many of those had never attended sessions without their parents / carers. The team worked hard to ensure that everybody attending felt comfortable, safe and enjoyed themselves. The activities delivered ranged from lego club, arts & crafts, clay modelling and necklace/bracelet making.

*"It was fabulous riding the bikes in a lovely park, will definitely do this often."*

Our famous Accessible Colour Blast returned in 2022 (following postponement due to the pandemic). 80 children and young people plus family members took part and what a blast it was. Everybody taking part said how much they enjoyed the messy and noisy event and having the opportunity to take part as a whole family.

*"All students enjoyed themselves and had a really good day, the staff were very helpful and supported us throughout."*

**1940**

## INDIVIDUAL HOURS OF CYCLING ACTIVITY

delivered in 2022-23

**189**

## EVENT ATTENDANCE

no of users attending special events

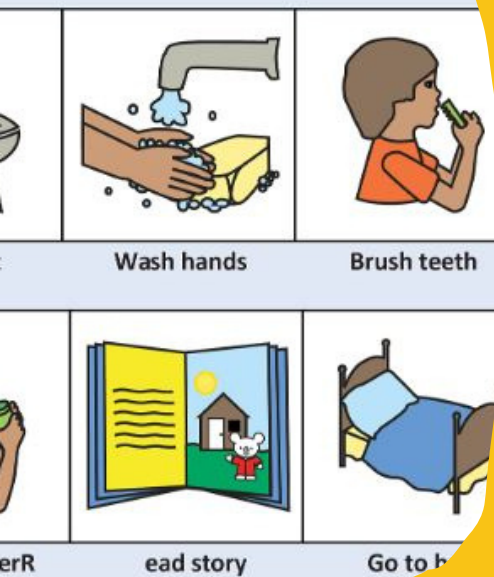
**81**

## ACCESSIBLE FISHING

no of children and young people attending the activity

# SEND TRAINING & WORKSHOPS

## The Bedtime Routine & Visual Schedule



The Workshops and Training Service have continued to deliver support to parents and carers through the Autism Post-diagnosis and the Self-Support Pathway training programmes during 2022-23. Themed workshops have included Introduction to Autism, Behaviour, Communication, Sleep and Transitions.

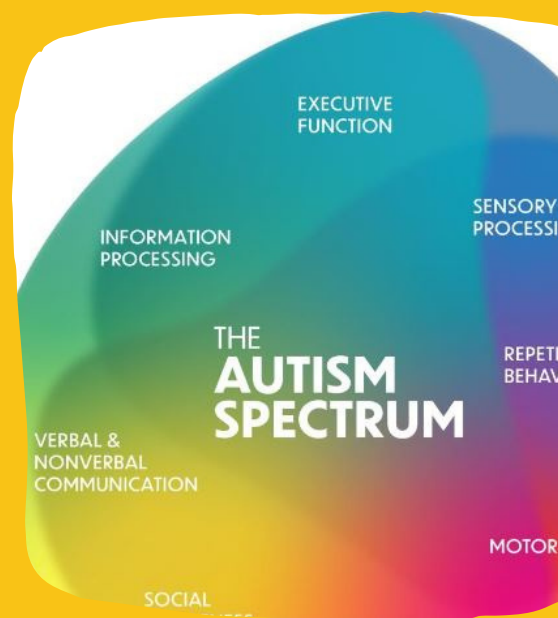
Following restrictions being lifted after the pandemic, the service moved back to in-person delivery of the workshops. However, taking on board parent/carer feedback some sessions were still delivered virtually in the evenings, offering continued flexibility and inclusivity.

The team still offers telephone and email consultation on specific queries or issues the parent / carer may have in relation to themes covered in the workshops and also deliver more bespoke 1-1 sessions if there is an identified need for this as well as interpreted group sessions. Our Urdu speaking co-ordinator has been able to deliver sessions directly to Urdu speaking families which has increased the opportunity for those family members to meet and offer each other support.

"The suggestions mainly for our family in session I was very helpful and I have already put some strategies into place. Very happy I come to the workshop. A lovely group to come to"... Parent/Carer

Working with the Oldham Parent Carer Forum, the workshops service was involved in the Early Identification of Need pilot project within Oldham, which aimed to upskill schools and parents. The team successfully delivered themed workshops to parents/carers and shared this information with the schools to promote a consistent and joined up approach. Due to the success of the project these workshops will be rolled out in 2024 to other mainstream schools.

"Very personal session. Felt at ease and relaxed. Comfortable to share openly about my own personal experiences."... Parent/Carer



# Impact and Outcomes

In addition to the main English speaking sessions, the team have been able to deliver interpreted sessions in Portuguese, Polish, Bangla, Urdu and Mandarin. This has ensured that more families are able to access the right support needed at the right time.

"I feel it has opened my eyes to what communication techniques I can implement at home to help my child." ...Parent/Carer

The geographical and ethnicity profiles increased during this year in the overall ethnic minorities representation. There has been a positive uptake in engagement from those families who had not previously engaged with the service and the hope is that this will increase in the following year.

"A very informative session with useful information. Delivered in a fun way with lots of chance for discussion about experiences etc. Questions were answered really well."... Parent/Carer

2022-23 has seen an increase in Self-Support Pathway referrals. This has increased the support given to those parents and carers of children with social communication difficulties who do not meet the threshold for an ASD diagnosis, or who have not yet had their assessments concluded. Giving these families earlier access to information and training during the assessment process.

"Good to be more informed on how my autistic child mind work & understanding them better."... Parent/Carer

141

## NEW REFERRALS

made in 2022-23

126

## WORKSHOPS DELIVERED

enabling access to the right support at the right time.

98%

## SATISFACTION

that they found the information relevant and can use what they have learnt to help them meet their child's needs



# DRS & MEDIATION SERVICE



POINT were successful in our tender for the delivery of the Oldham SEND Mediation and Disagreement Resolution Service and commenced delivery in October 2022.

Mediation and Disagreement Resolution provides a vital service to parents and carers of children and young people with SEND and young people in their own right, enabling them to work through disagreements about their Education, Health and or Social Care provision. It was therefore important to POINT that in establishing this service, we consulted with families, children and young people to provide a Mediation model where all

participants felt they had a safe space, an opportunity to discuss disagreements effectively with the opportunities to reach mutually agreeable decisions.

POINT invested in the employment, training and professional development of 5 mediators to ensure we had a breadth of suitable subject experts to meet the needs of referring service users.

"Very impressed with the mediator, she explained everything in detail. Very helpful to resolve everything. Very happy with the outcome"... Parent Carer

The service is already proving to be highly regarded and the demand for Mediation and Disagreements, whilst significant, demonstrates the willingness to resolve disagreements locally and the service has already evidenced success in negating the need for SEND disagreements to be escalated to the SEND Tribunal.

POINT fully support and advocate that parents, carers and young people should exercise their rights related to decisions about their own, or their child's special educational needs and or disabilities and are privileged to deliver this vital early intervention support, avoiding crisis and supporting the best possible outcomes for children and young people.



# Impact and Outcomes

Mediator was really good and deserves acknowledgement for dually running mediation and interpreting in such a calm and professional manner...Parent Carer

The service was commissioned to support 50 Mediation sessions per annum. The service however has seen significant demand meaning this has been exceeded in the first 6 months of the new contract.

Despite this exceptional demand, the Mediation and Disagreement Resolution Service has met all requirements, ensuring that parents, carers and young people can refer to and access Mediation and Disagreement Resolution within the statutory 30 day timeframe.

"The mediation required flexibility due to the range of issues. This was handled very well"...

Local Authority Practitioner

The experience of children, young people, parents, carers and practitioner participants at Mediation sessions, evidences that the service delivery model is fair, unbiased, accessible and most importantly provides a supportive platforms to discuss differences and reach suitable outcomes.

POINT are looking forward to what plans to be a very busy time for this new service in 2023-24.

"Amazing, so helpful, very thorough, explained the whole procedure thank you"... Parent Carer

88

**REFERRALS**  
to Mediation and DRS in 2022-23

73%

**PERCENTATGE OF  
SESSIONS**  
which resulted in a change of  
outcome or decision

92.5%

**SATISFACTION**  
rating from aparticipants

# FINANCIAL STATEMENT

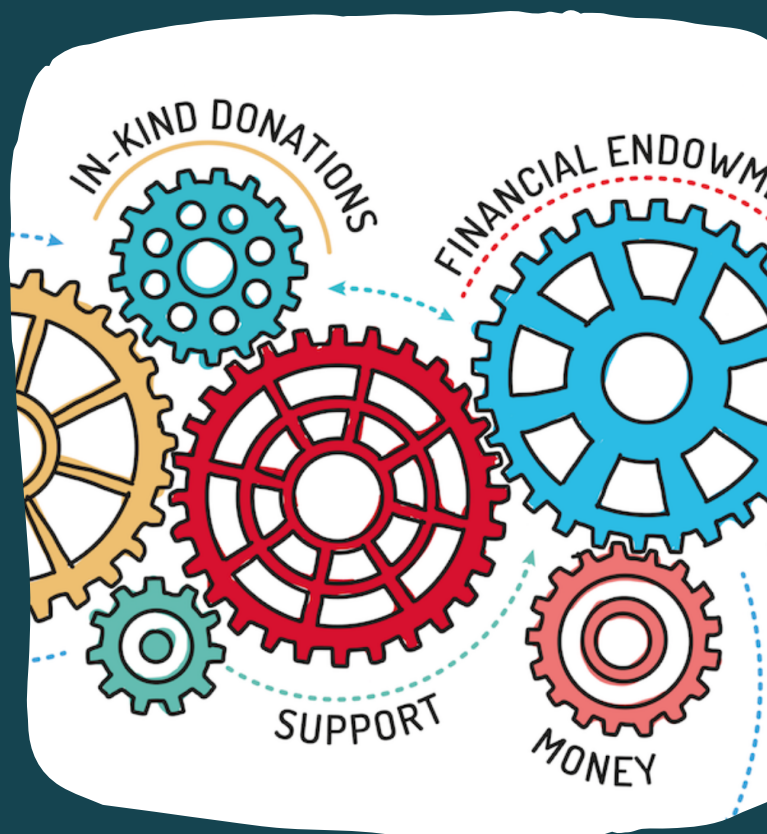


In line with transparent reporting and good governance, POINT are pleased to present our financial accounts for the year 2021-22 which are attached in this section of our annual report.

POINT continue to undertake short, medium and long term financial planning using our governing documents to ensure that we react, respond and fulfil our mission to grow the charity in areas of work which align to our mission statement and objectives.

Following an Independent audit of our accounts, POINT are once again able to report that our accounts are fully compliant with no remedial actions identified.

We remain committed to openness and transparency in all governing matters and you can view our fully published 2021-22 accounts in the following pages.





**Charity Registration Number: 1161596**

**Parents of Oldham in Touch (POINT)**  
**(A Charitable Incorporated Organisation)**  
**TRUSTEES' ANNUAL REPORT AND**  
**FINANCIAL STATEMENTS**  
**For The Year Ended 31 March 2023**

## **Parents of Oldham in Touch (POINT)**

### **CONTENTS**

---

Members of the Board and Professional Advisers	2
Trustees' Annual Report	Inserted
Independent Examiner's Report	3
Statement of Financial Activities (incorporating the income and expenditure account)	4
Balance Sheet	5
Statement of Cash Flows	6
Notes to the Financial Statements	7 to 11

## **Parents of Oldham in Touch (POINT)**

### **MEMBERS OF THE BOARD AND PROFESSIONAL ADVISORS**

---

<b>Registered Charity Name</b>	Parents of Oldham in Touch (POINT)
<b>Charity Number</b>	1161596
<b>Registered Office</b>	Chadderton Court 451 Middleton Road Chadderton Oldham OL9 9LB
<b>Trustees</b>	Elizabeth Mary Lang Derek Rhoden Emma Louise Atkinson Richard William Scarborough Janet Wray (appointed 11/05/2022) Fiona Southall (resigned 30/11/2022)
<b>Accountants</b>	Community Accounting Lancashire C.I.C. Foxfields 9 Norley Close Chadderton Oldham OL1 2RA
<b>Bankers</b>	Virgin Money 47 Market Place Oldham OL1 3AD



## **Parents of Oldham in Touch (POINT)**

### **REPORT TO THE MEMBERS ON THE UNAUDITED FINANCIAL STATEMENTS OF Parents of Oldham in Touch (POINT)**

**YEAR ENDED 31 MARCH 2023**

---

I report on the accounts for the year ended 31 March 2023 set out on pages 4 to 11.

#### **Respective Responsibilities of Trustees and Examiner**

As the charity's trustees you are responsible for the preparation of the accounts in accordance with the requirements of the Charities Act 2011 ("the Act").

The charity's trustees consider an audit is not required for this year under section 144 of the 2011 Act, and that an independent examination is needed.

It is my responsibility as independent examiner to:

- ~ examine the accounts under section 145 of the 2011 Act
- ~ follow the applicable Directions given by the Charity Commissioners under section 145(5)(b) of the 2011 Act, and;
- ~ to state whether particular matters have come to my attention

#### **Basis of Independent Examiners Report**

My examination was carried out in accordance with the Directions given by the Charity commission.

An examination includes a review of the accounting records kept by the charity and a comparison of the accounts presented with those records. It also includes consideration of any unusual items of disclosures in the accounts, and seeking explanations from the trustees concerning any such matters.

The procedures undertaken do not provide all the evidence that would be required in an audit, and consequently I do not express an audit opinion on the accounts.

#### **Independent Examiners Statement**

I have completed my examination for the year ended 31 March 2023.

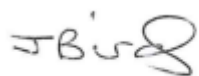
I can confirm that no material matters have come to my attention in connection with the examination which gives me cause to believe that in, any material respect:

- ~ accounting records were not kept in accordance with section 130 of the 2011 Act or
- ~ the accounts do not accord with the accounting records to comply with the accounting requirements of the 2011 Act
- ~ the accounts have not been prepared in accordance with the methods and principles of the Statement of Recommended Practice for accounting and reporting by charities [applicable to charities preparing their accounts in accordance with the Financial Reporting Standard applicable in the UK and Republic of Ireland (FRS102)].

I have no concerns and have come across no other matters in connection with the examination to which attention should be drawn in order to enable a proper understanding of the accounts to be reached.

#### **Independent Examiners Qualification**

Since the charity's gross income exceeded £250,000 your examiner must be a member of a body listed in section 145 of the 2011 Act. I confirm that I am qualified to undertake the examination, being a Fellow Member of the Association of Accounting Technicians, which is one of the listed bodies.



22<sup>nd</sup> November 2023

**Miss Jacqueline Bird F.M.A.A.T.**

*Practising Licence Number: 1003659*

**Community Accounting Lancashire C.I.C.**

Foxfields, 9 Norley Close, Chadderton, Oldham, OL1 2RA

**Parents of Oldham in Touch (POINT)**

**STATEMENT OF FINANCIAL ACTIVITIES  
(INCORPORATING THE INCOME AND EXPENDITURE ACCOUNT)**

**YEAR ENDED 31 MARCH 2023**

		Unrestricted Funds 2023 £	Restricted Funds 2023 £	Total Funds 2023 £	Total Funds 2022 £
	<i>Notes</i>				
<b>Income from:</b>					
Grants and donations	<b>2</b>	370,777	117,332	488,109	345,261
Charitable activities	<b>3</b>	-	-	-	40
Other Income	<b>4</b>	28,998	-	28,998	20,602
Investments		<u>58</u>	<u>-</u>	<u>58</u>	<u>28</u>
<b>Total</b>		<u><b>399,833</b></u>	<u><b>117,332</b></u>	<u><b>517,165</b></u>	<u><b>365,931</b></u>
<b>Expenditure on:</b>					
Raising funds	<b>5</b>	-	720	720	7,432
Charitable activities	<b>6</b>	351,772	124,109	475,881	336,401
Other expenditure		<u>-</u>	<u>-</u>	<u>-</u>	<u>-</u>
<b>Total</b>		<u><b>351,772</b></u>	<u><b>124,829</b></u>	<u><b>476,601</b></u>	<u><b>343,833</b></u>
<b>Net income/(expenditure)</b>		<u><b>48,061</b></u>	<u><b>(7,497)</b></u>	<u><b>40,564</b></u>	<u><b>22,098</b></u>
<b>Transfers between funds</b>	<b>10</b>	-	-	-	-
<b>Net movement in funds</b>		<u><b>48,061</b></u>	<u><b>(7,497)</b></u>	<u><b>40,564</b></u>	<u><b>22,098</b></u>
<b>Reconciliation of funds:</b>					
Total funds brought forward		<u><b>74,902</b></u>	<u><b>12,441</b></u>	<u><b>87,343</b></u>	<u><b>65,245</b></u>
<b>Total funds carried forward</b>	<b>10</b>	<u><b>122,963</b></u>	<u><b>4,944</b></u>	<u><b>127,907</b></u>	<u><b>87,343</b></u>

The notes on pages 6 to 11 form part of these financial statements.

Note 13 to the accounts shows a comparative Statement of Financial Activities for the year ended 31 March 2022.

# Parents of Oldham in Touch (POINT)

## BALANCE SHEET

AS AT 31 MARCH 2023

	<i>Notes</i>	<b>2023</b>		<b>2022</b>	
		£	£	£	£
<b>CURRENT ASSETS</b>					
Debtors	<b>8</b>	25,039		45,091	
Cash at Bank and in Hand		<u>104,787</u>		<u>48,751</u>	
		129,826		93,842	
<b>CREDITORS: Amounts falling due within one year</b>	<b>9</b>	1,919		6,499	
<b>NET CURRENT ASSETS</b>			127,907		87,343
<b>CREDITORS: Amounts falling due after one year</b>			<u>-</u>		<u>-</u>
<b>NET ASSETS</b>			<u>127,907</u>		<u>87,343</u>
<b>FUNDS OF THE CHARITY</b>					
Unrestricted Funds			122,963		74,902
Restricted Funds			<u>4,944</u>		<u>12,441</u>
<b>TOTAL FUNDS</b>	<b>10</b>		<u>127,907</u>		<u>87,343</u>

The financial statements were approved by the Board of Trustees on the 22nd of November 2023 and signed on their behalf:

Signed:



Name: Derek Rhoden, Chair  
Trustee

**Parents of Oldham in Touch (POINT)**

**STATEMENT OF CASH FLOWS**

**YEAR ENDED 31 MARCH 2023**

---

	<i>Notes</i>	<b>2023</b>		<b>2022</b>	
		£	£	£	£
<b>Cash flows from operating activities</b>					
Cash generated/(absorbed by) from activities	<i>12</i>		56,036		10,296
<b>Investing activities</b>					
Investment income received		-		-	
<b>Net cash generated from investing activities</b>			-		-
<b>Net cash used in financing activities</b>			<u>-</u>		<u>-</u>
<b>Net increase/(decrease) in cash and cash equivalents</b>			<u>56,036</u>		<u>10,296</u>
 Cash and cash equivalents at beginning of year			<u>48,751</u>		<u>38,455</u>
 Cash and cash equivalents at end of year			<u>104,787</u>		<u>48,751</u>

---

## **Parents of Oldham in Touch (POINT)**

### **NOTES TO THE FINANCIAL STATEMENTS for the year ended 31 March 2023**

---

#### **1. ACCOUNTING POLICIES**

##### **Basis of accounting**

The financial statements have been prepared in accordance with Accounting and Reporting by Charities: Statement of Recommended Practice applicable to charities preparing their accounts in accordance with the Financial Reporting Standard applicable in the UK and Republic of Ireland (FRS102) issued on 16 July 2014 [as updated through Update Bulletin 1 published on 2 February 2016 and also Update Bulletin 2 published on 5 October 2018) – (Charities SORP (FRS 102)], the Financial Reporting Standard applicable in the UK and Republic of Ireland (FRS 102) and the Companies Act 2006.

##### **Going Concern**

The trustees are satisfied that there are no material uncertainties about the charity's ability to continue.

##### **Incoming resources**

All income, including grants and donations, is recognised once the charity has entitlement to the income. It is probable that the income will be received, and the amount of income receivable can be measured reliably. Restricted funds are to be used for specified purposes as laid down by the donor.

Expenditure which meets these criteria's is identified to the fund, together with a fair allocation of overheads and support costs. Unrestricted funds are for grants, donations and other incoming resources received or generated for charitable purposes.

##### **Resources expended**

All expenditure is accounted for on an accruals basis. All expenses, including support costs and governance costs, are allocated or apportioned to applicable expenditure headings.

Charitable expenditure shall include all expenditure directly related to the objects of the charity, including the cost of goods and services, that have been incurred in charitable activities.

Liabilities are recognised as expenditure as soon as there is a legal or constructive obligation committing the charity to that expenditure, it is probable that settlement will be required, and the amount for the obligation can be measured reliably.

##### **Governance costs**

Governance costs shall include all expenditure directly related to the administration of the charity including expenditure incurred in the management of the charity's assets, organisational administration and compliance with charitable and statutory requirements.



**Parents of Oldham in Touch (POINT)**

**NOTES TO THE FINANCIAL STATEMENTS**  
**for the year ended 31 March 2023**

**2. INCOME FROM GRANTS & DONATIONS**

	Unrestricted Funds	Restricted Funds	2023 Total Funds	2022 Total Funds
	£	£	£	£
The National Lottery Community Fund	-	63,060	<b>63,060</b>	37,700
Oldham PCF Grant	-	50,716	<b>50,716</b>	37,465
Get Fishing Large Project Fund	-	2,499	<b>2,499</b>	1,135
Pears Foundation/DCMS Grant	-	-	-	6,250
General Unrestricted Grants	360,579	-	<b>360,579</b>	256,595
Donations	10,198	1,057	<b>11,255</b>	6,116
	<u><b>370,777</b></u>	<u><b>117,332</b></u>	<u><b>488,109</b></u>	<u><b>345,261</b></u>

**3. INCOME FROM CHARITABLE ACTIVITIES**

	Unrestricted Funds	Restricted Funds	2023 Total Funds	2022 Total Funds
	£	£	£	£
Fundraising	-	-	-	40
	<u>-</u>	<u>-</u>	<u>-</u>	<u>40</u>

**4. OTHER INCOME**

	Unrestricted Funds	Restricted Funds	2023 Total Funds	2022 Total Funds
	£	£	£	£
Access To Work Grant	28,998	-	<b>28,998</b>	20,602
Sundry Income	-	-	-	-
	<u><b>28,998</b></u>	<u>-</u>	<u><b>28,998</b></u>	<u><b>20,602</b></u>

**5. EXPENDITURE ON RAISING FUNDS**

	Unrestricted Funds	Restricted Funds	2023 Total Funds	2022 Total Funds
	£	£	£	£
Events, Engagement and Activities*	-	-	-	7,432
Max Cards	-	720	<b>720</b>	-
	<u>-</u>	<u><b>720</b></u>	<u><b>720</b></u>	<u><b>7,432</b></u>

*\*Expenditure was previously from fundraising activities, and these costs are now included in 'Expenditure on Charitable Activities' as they are from activities carried out within projects.*

**Parents of Oldham in Touch (POINT)**

**NOTES TO THE FINANCIAL STATEMENTS**  
for the year ended 31 March 2023

**6. EXPENDITURE ON CHARITABLE ACTIVITIES**

	Unrestricted Direct & Governance Costs £	Restricted Direct & Governance Costs £	Unrestricted Support Costs £	Restricted Support Costs £	2023 Total Funds £	2022 Total Funds £
Events & Activities	-	-	16,254	7,302	23,556	-
Salaries	280,070	58,502	-	-	338,572	253,166
Cost of Living Support	-	7,000	-	-	7,000	-
Travel Expenses	-	-	3,567	404	3,971	1,041
Accommodation Costs	-	-	90	-	90	386
Rent	-	-	(988)	30,688	29,700	29,700
Equipment	-	-	10,729	1,826	12,555	1,242
Library Resources	-	-	-	2,181	2,181	-
Storage Costs	-	-	908	-	908	-
Repairs & Maintenance	-	-	1,648	156	1,804	1,765
Security Costs	-	-	270	67	337	-
Light, Power & Heating	-	-	4,398	4,645	9,043	1,660
Water Charges	-	-	534	991	1,525	775
Printing & Stationery	-	-	2,304	283	2,587	432
Telephone & Internet	-	-	5,859	475	6,334	5,025
Training	2,472	508	-	-	2,980	16,421
Recruitment Costs	-	-	1,598	-	1,598	-
Insurance	-	-	4,714	649	5,363	3,341
Professional Fees	-	-	1,975	353	2,328	3,457
Subscriptions	-	-	1,415	29	1,444	1,040
IT Software & Consumables	-	-	9,247	2,231	11,478	7,811
Postage & Freight Costs	-	-	74	(60)	14	238
Cleaning Costs	-	-	2,946	576	3,522	2,130
Clothing	-	-	1,377	191	1,568	-
Volunteer Expenses	-	-	795	-	795	-
Refreshments	-	-	11	104	115	-
General Expenses	-	-	1,762	659	2,421	2,937
Central Support Costs	-	-	(4,000)	4,000	-	-
Unrestricted Grants Returned	-	-	-	-	-	1,634
Accountancy Fees	1,036	259	-	-	1,295	1,445
Payroll Costs	390	29	-	-	419	353
Bank & Service Charges	317	61	-	-	378	402
Miscellaneous	-	-	-	-	-	-
	<u>284,285</u>	<u>66,359</u>	<u>67,487</u>	<u>57,750</u>	<u>475,881</u>	<u>336,401</u>

**Total resources expended are stated after charging:**

	2023 £	2022 £
Independent examination fees	1,295	1,295
Completion of tax work and HMRC tax return	-	150
	<u>1,295</u>	<u>1,445</u>

Donation made by Community Accounting Lancashire C.I.C.

<b>Net Accountancy Costs</b>	<u>-</u>	<u>(120)</u>
	<u>1,295</u>	<u>1,325</u>

# Parents of Oldham in Touch (POINT)

## NOTES TO THE FINANCIAL STATEMENTS for the year ended 31 March 2023

### 7. STAFF COSTS

The movement in the year is after charging:

	2023	2022
	£	£
Wages and Salaries	<u>338,572</u>	<u>253,166</u>

Average number of employees during the year was 14, an average of 10.9 full time equivalent (2021: average of 11, and 9.1 FTE).

No employee received emoluments of £60,000 or above (2022: none).

No Trustees were paid any remuneration or expenses during the course of the year.

### 8. DEBTORS

	2023	2022
	£	£
Debtors	25,039	44,971
Accrued Income	-	120
Prepayments	-	-
	<u>25,039</u>	<u>45,091</u>

### 9. CREDITORS: Amounts falling due within one year

	2023	2022
	£	£
Creditors	624	367
Accruals	<u>1,295</u>	<u>6,132</u>
	<u>1,919</u>	<u>6,499</u>

### 10. FUNDS ANALYSIS

Fund Name	Balance as at 1 April 2022	Receipts	Payments	Balance as at 31 March 2023
<b>Restricted Funds</b>	£	£	£	£
The National Lottery Community Fund	19,099	63,060	(62,134)	20,025
Oldham PCF Grant	(7,793)	50,716	(60,569)	(17,646)
Donations	-	1,057	(1,057)	-
Get Fishing Large Project Fund	<u>1,135</u>	<u>2,499</u>	<u>(1,069)</u>	<u>2,565</u>
	<u>12,441</u>	<u>117,332</u>	<u>(124,829)</u>	<u>4,944</u>
<b>Unrestricted Funds</b>	<u>74,902</u>	<u>399,833</u>	<u>(351,772)</u>	<u>122,963</u>
<b>TOTAL FUNDS</b>	<u>87,343</u>	<u>517,165</u>	<u>(476,601)</u>	<u>127,907</u>

### 11. RELATED PARTY TRANSACTIONS

There were no disclosable related party transactions during the year (2022: none).

**Parents of Oldham in Touch (POINT)**

**NOTES TO THE FINANCIAL STATEMENTS**  
for the year ended 31 March 2023

**12. CASH GENERATED FROM ACTIVITIES**

	2023 £	2022 £
<b>Surplus/(deficit) for the year</b>	<b>40,564</b>	22,098
<b>Adjustments for:</b>		
Investment income recognised in statement of financial activities	-	-
<b>Movements for:</b>		
Increase/(decrease) in debtors	<b>20,052</b>	(11,815)
Increase/(decrease) in creditors	<b><u>(4,580)</u></b>	<u>13</u>
<b>Cash generated/(absorbed by) from activities</b>	<b><u>56,036</u></b>	<u>10,296</u>

**13. COMPARATIVE INFORMATION**

		Unrestricted Funds 2022 (previous year) £	Restricted Funds 2022 (previous year) £	Total Funds 2022 (previous year) £
	<i>Notes</i>			
<b>Income from:</b>				
Grants and donations	2	261,634	83,627	345,261
Charitable activities	3	40	-	40
Other income	4	20,602	-	20,602
		<u>28</u>	<u>-</u>	<u>28</u>
<b>Total</b>		<u>282,304</u>	<u>83,627</u>	<u>365,931</u>
<b>Expenditure on:</b>	5			
Raising funds	6	112	7,320	7,432
Charitable activities		275,485	60,916	336,401
Other expenditure		<u>-</u>	<u>-</u>	<u>-</u>
<b>Total</b>		<u>275,597</u>	<u>68,236</u>	<u>343,833</u>
<b>Net income/(expenditure)</b>		<u>6,707</u>	<u>15,391</u>	<u>22,098</u>
Transfers between funds	10	-	-	-
<b>Net movement in funds</b>		<u>6,707</u>	<u>15,391</u>	<u>22,098</u>
<b>Reconciliation of funds:</b>				
<b>Total funds carried forward</b>	10	<u>74,902</u>	<u>12,441</u>	<u>87,343</u>



# A CLOSING MESSAGE FROM OUR CEO

It remains my absolute pleasure and privilege to be the CEO of such a wonderful, diverse and inclusive charity, that continues to focus on developing services which support children, young people and their families to access support, navigate their rights and importantly secure suitable outcomes which will help them live an ordinary life.

Over the past 14 years, POINT really has established itself as a driving force for change. This is very much a testament to every member, service user, partner and of course the amazing staff and volunteer teams at POINT.

I look forward to sharing more exciting news from POINT in next years annual report but until then, a huge thank you for your continued support and confidence in POINT.



Andrew Robinson  
CEO and Founder, POINT



POINT is a registered charity in England and Wales no: 1161695 who's registered address is Chadderton Court, 451 Middleton Road, Chadderton, Oldham OL9 9LB