



One Vision Media Studios.

Charity Incorporated Organisation
Hope Enterprise Centre Scot Lane, Wigan WN5 0PN
Tel No: 01942 211000
www.onevisionmedia.org
team@onevisionmedia.uk.com
Chief Executive Officer – Kevin Rosental.
Assistant Manager – Natalie Hamilton

Charity Commissions' Annual Report

Completed by: Kevin Rosental. Date: 23.01.2025

SUMMARY OF One Vision and ACTIVITIES

One Vision Media CIO, a Charitable Incorporated Organisation, established in March 2015. Originally, One Vision began as a not-for-profit Organisation started by a free speech group of people with disabilities in October 1998. The original group would meet one day per week to discuss ways in which they could voice their opinions and concerns about the services that they would make contact with on a regular basis. Choosing film as the medium gave everyone the opportunity to have and learn new skills whilst creating powerful messages to share with a wider audience.

With money from Wigan Adult Services, the group were able to secure rent for a room in a building in Wigan before moving to Hope Enterprise Centre the following year.

What started with just a handful of students and two staff members One Vision has now developed into a thriving Organisation. One Vision is proud to welcome in over 80 members across the week. The number in attendance still vary a little, each week. We now have an amazing staff team of 32 and sometimes need to hire Bank Staff too. Each person is dedicated to delivering an excellent activity program and providing the best quality of care for everyone. We also have other attendees (Around 50 plus students and staff) that visit from various schools and colleges during each week.

From renting just one unit for one day per week, the project has grown and grown. With successful applications to Awards for All and the Big Lottery Fund, the project was able to employ staff, buy new camera equipment and rent additional units. A second successful bid the Big Lottery Fund obtained in 2008 giving One Vision an additional 5 years funding.

One Vision Studios is a non-profit group that provides training courses for people with learning disabilities in all aspects of media production. The group was established in October 1998 through a free speech group. One Vision Studios provides practical training courses for people with a learning disability.

It was during this time that we began to redevelop the activities program to cover more areas of learning and began to develop links with other groups and organisations.

You will be amazed at what goes on at One Vision Media Studios. Look at the following information below.

Here at One Vision Studios, we provide an alternative community based training and activities program in film, media, performing Arts, life skills, preparing for adulthood and the working world, Health and Wellbeing and education; taking a person centered, needs led approach to learning and support that will enable individuals to make informed choices about themselves and their education.

The education and training program at One Vision has been updated; we still study through our social setting and through an educational pathway, allowing our members the opportunity to gain a wide range of skills across a varied timetable/ experiences.

Members Session Choices:

These projects run for approximately twelve weeks /24 weeks depending on the subjects aims and objectives.

All departments provide opportunities to make personal progress, in various ways: physical development / communication / making choices / Functional literacy, reading, writing, speaking and listening / Functional numeracy: number, area, space and measure, time, managing money/ Functional I.C.T / Citizenship / PSHE- Personal, Social, Health and Economics. Understanding or awareness of British Values. We also use Individualised Work Mats/targets so that we can stretch and challenge each member celebrating and supporting each individual's dreams and aspirations too.

An example of our timetable is as follows...

The Task Masters – Workshop and Granville's Shed - floristry

(Construction, Gardening, Horticultural, Groundwork, Maintenance Studies, Workshop, Sewing studio, Cinema, Print Room, Floristry, Shop, Laundrette, Costume Room,

Kenny G's Diner (Our dining room) and Rosie's Place (Our house next door)

Hospitality, Independent living skills etc.)

Skills for Independence, Unique Sewing (Made by US)

(Construction, Gardening, Horticultural, Groundwork, Maintenance Studies, Workshop, Sewing studio, Cinema, Print Room, Floristry, Shop, Laundrette, Costume Room, retail / sales etc.)

Bright Sparks

(Media / Technology, Engineering and Design / Theatre tech – sound and lighting)

Film Crew — Movie Makers and

(Filming, Media studies, Information communication and Technology, Photography, Costume Room, Character Creating, Theatre studies, Musical Theatre, Singing, Acting, Dance etc.)

Performing Arts - Theatre Skills

(Costume Room, Character Creating, Theatre studies, Musical Theatre, Music, Recording and music production, Singing, Acting, Dance etc.)

Health and Wellbeing for Body and Mind and ...

(Out doors and in doors Fitness / Fun / Walks / Sports / Mindfulness / Healthy Living / enjoying The Arts/ Bounce back ability etc.)

Sensorial Super Stars

(Sensory exploration, gaining knowledge and understanding from One Vision and the world around us. All of which is linked to the above studies.)

Rosies Place (We rent the house next door to One Vision Studios)

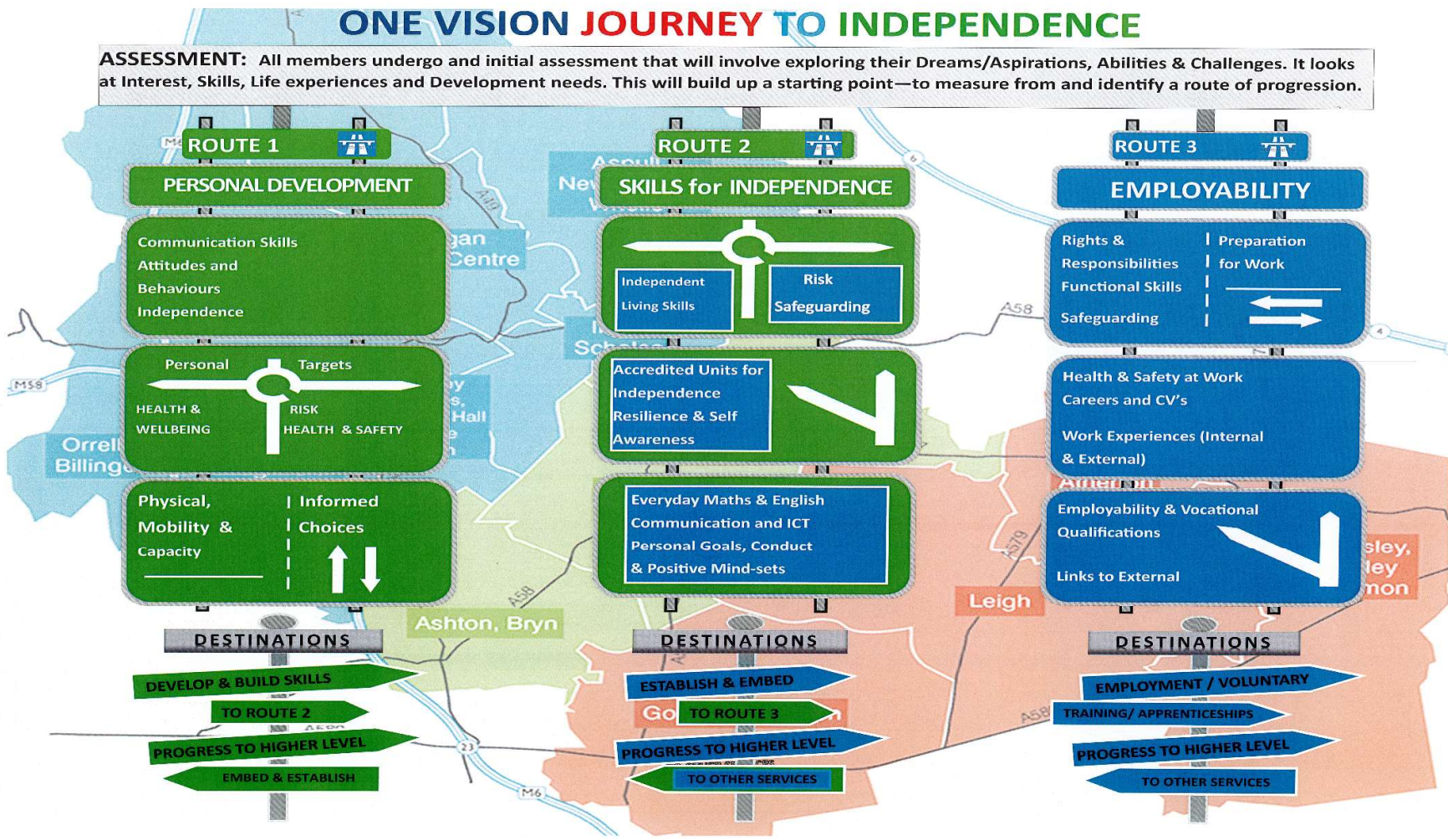
(Skills for life/ Independent living skills to run a home/Social skills/ Functional living skills.)

We sought out work placements through our department 'Vocational Vision' for individuals whose dream is to gain employment in the future (voluntary or paid).

We also link up with Wigan Councils Community Unity Project and supported Employment.

We access our local community for various activities as well as venturing further afield for day trips and holidays.

We in our Fourth year of our 'Vocational Vision' venture. This has been added to our offer to ensure that our members start their experiences at One Vision and / or Vocational Vision and travel on an individualised journey. These are our 'Routes' (see examples below)



- We have regular social link, sessions, activities, meetings and events linked with our community, local services, schools, colleges and organisations.
- We deliver a varied hosting a range of healthy life style activities, educational, vocational training, independent living skills and promoting independence.
- We have a music project that focuses on 1:1 tuition, band practice, choir, song writing and composing. We do this working with Karl Derbyshire from a company called The Music Project; this enables our members to have an introduction to music and enjoy various music genres, instruments etc. They will learn how to explore or play instruments, sing or compose a song/music.
- We also link up with Idyllwild Recording Studio in Leigh. We have recorded tracks here, thus giving our members the immersive experience of a real recording studio and gaining knowledge and understanding of all elements to create a track.
- We used to link up with The Canal and River Trust, 'The Desmond Family Canoe Trail' and The Princes Trust Ground work Team. We were restoring the canal sides as well as learning all about the canal wild life, caring for the countryside and for our local environment, health and safety near water, keeping the canals clean, tidy, and safe etc. The Canal and River Trust lost the funding from The Desmond Family Canoe Trail so this link ceased. We enjoyed this work so much; we now continue to support this wonderful ethos. Now we provide construction workshop for our members, other schools and local groups that link with One Vision of the projects. We are growing our own plants in our poly tunnel. These plants help us to transform our grounds, make donations or have sales in our local community etc. We also focus on maintaining and developing outdoor areas on site. Whilst doing this we have linked with the 'John Muir Award'. Our members have loved learning about John Muir and the great outdoors as well as gaining new skills along the way. At the end of The John Muir Award/project participants are awarded with a certificate on completion.
- We provide educational and vocational experiences for our members, local organisations, local colleges, and schools. These linked schools and Colleges are from the Wigan areas, West Lancashire and Preston areas. We are contacted by OFSTED inspectors who embrace our collaboration as we offer functional education, preparing for adulthood, skills for independence and much, much more.

- We work with ASDA superstore in Wigan, on various activities so that we can learn independent living skills and highlight our community awareness. We also enter their competitions and join in with their fundraising challenges when possible. This promotes our members Citizenship skills and supports British values. We also support various Charities: Macmillan, Alzheimer's Society, Children in Need and Save the Children, British legion and others.
- Our wonderful dance studio has now been converted into a theatre has been a great success for us and beneficial for local groups to hire; dance companies and a cheerleading group as they rent this space when needed. It is also rented out for local council and group meetings too.
- During the past years, we rented rooms out to three other business' at reasonable rates so they could get a good start to their business'. Unfortunately, these businesses have closed due to lock down. These rooms are now used for our New Venture 'Vocational Vision'. We have put plans in place to refurbish this section of the building during the next year. (This was a two-year plan, we have already been working on this plan for 12 months)
- Five years ago, we obtained another building that is attached to One Vision, and all of its grounds. Due to the pandemic, we realised that we need larger spaces to function safely. We started a refurbishment project on this building. This refurbishment was made possible by kind a hearted company 'The Cloth Workers' as well as our own funds (This is reflected in last year's accounts). The dining space contains a pool table, Coffee and drinks bar and a training Kitchen. These rooms are now completed. We have other rooms still to complete but it is all looking grand and is developing into an amazing learning environment as well as a social environment. This space is proving to be a great success, helping our members to gain hospitality and cooking/catering skills as well as learning social skills too.
- We still provide an outreach team that perform shows to other services / charities when possible. We do this from our spectacular show bus. Our Christmas show is a show you would not want to miss.

Due to the pandemic, it has made us work hard to re design the layout and or the location of some workspaces. The reason for this is... If this pandemic or something alike should happen again, would we be ready and safe to stay open?

Our plans for the future –

Studio 5

We would still like to create or update:

Sensorial Exploration Studio or even put in a swim spa – We would like to create a lovely exploration room where our members can enjoy/experience a session in a way that is beneficial to them. This is where the person will gain more knowledge and understanding from an activity such as Art, Cooking, Modelling etc. linked with postural management and physiotherapy.

- **Toilet facilities** – New facilities. These services need an update so that they are accessible for all.
- **Showering facilities** – If a swim spa is fitted, we would need this.
- **Studio 5's gardens** – Seating and groundwork needs landscaping so that it looks nice and is safe for our members to enjoy.

Successes for studio 5 - we have already achieved:

- **The surrounding fences at the Scot Lane entrance of One Vision**, Thus creating a safe space near such a busy road.
- **Character creating studio/Salon** – are rooms that consist of costumes and props store as well as **a fully operating hairdressers and beauty salon**. We now need a larger salon. This salon is to be relocated to another room in this same studio area. The Salon will provide experiences of working in creating characters for our filming projects. We hope that this will operate on some days as a standalone business where our members can gain work placements or enjoy being a customer.
- **Launderette** – To clean our costumes, uniforms etc. It will also provide a service for local sports teams and hairdressers to have their kits, gowns and towels cleaned by the launderette staff and members. This is going really well and the members are extremely proud of themselves.

- **Toilet facilities and personal care suites** – We have created these areas. These services are still in need of a full refurb so that they are accessible for all. The local college students are helping us to address these areas as their college projects.
- **We have created a meeting area** – We have a student council that uses this area. We use it for session planning, meetings, script writing, It has many opportunities.
- **We now have an office for our 5 heads or departments and Senior leadership team.** This has been amazing for them. The feedback from the staff say that this space is calm, quiet etc. so it is a productive place to work.

Studio 3 and4

We would like to create or update:

- **Toilet facilities** – New facilities. These services are in need of an update so that they are accessible for all. The local college students are helping us to address these areas as their college projects.
- **Art room – We would like to make this room more accessible for our sensory students.** This is so that we can promote Health and wellbeing and postural management for all.

Successes for studio 3 and4 - we have already achieved:

- **Print studio** – This business will supply the shop with goods. (Tee shirts, cups, bags, canvases and many more items). Orders from outside customers will be a future vision. We do have this room, but it needs a little updating.
- **Art and Craft studio** – This is a great space, the members study various artists to gain inspiration. They can then create artwork and various stock for seasonal sales and for their own creative development. This area also has its own outdoor teachings area.

Things that are created in the art studio, Floristry studio, Construction workshop will be sold on from our mobile/pop up market stalls.

- **Music and sound recording studio.** Music and singing lessons are available. We will record music and audio for our films and will hire it out to local bands etc. We do have a small music room, but we want to create a recording studio that compliments the experience.
- **Learning and Resource Centre (LRC)** this is an IT suite. This is used for our staff, our members to develop their ICT skills, gain training etc. We had this room in another studio, but it makes more sense to recreate in this other studio.
- **Cinema** – Jeff Barton of Gf Holding recognised this dream. In collaboration with other businesses, they planned, built and donated this cinema. Sharing the cost of £130,000. We have had the official opening (on a quieter scale than we would have liked, due to the pandemic. When safe to do so this will be used for the community, local day care services, residential care homes, schools etc. to enjoy a social day. They will use it without having the added pressures that can occur when companies are low on staffing, people suffering from dementia and similar life changing needs. It is also something that we need as a learning tool and a classroom for our students as well as it being a stepping-stone for some of our students who are learning how to cope with new environments. Our cinema is similar to our local cinema so that we can de sensitise our students so that they can eventually enjoy a trip to the local cinema with family and friends. Some local schools have used the cinema and the feedback is wonderful.
- **Needlework studio (Unique Sewing)** – One Vision, community groups and other organisations, will book out this room when desired. We will be encouraging the community to be involved in sewing clubs, Knit and Natter groups etc. when the pandemic is over. The members of One Vision are enjoying this studio. They are making costumes for our plays etc. and stock for our seasonal sales. We also make quilts for The Linus Project UK.
- **Construction Room, Workshop and Bright Sparks Tech Room** - products made in these rooms are to be sold on at local markets. We also create and recycle furniture, make props for performing arts and films, seasonal items

that we sell on at local pop-up markets. We also make things to enhance the indoor and outdoor spaces at One Vision.

- **Sensory/Therapy Room** – This is an amazing space, enabling staff to promote health and wellbeing, independence and postural management.
- **Health and Wellbeing** – We are proud of our Health Gym and Therapy space. The members are improving their own health and abilities. We have a session room that is attached so that the members can be educated on the importance of staying healthy in body and mind.
- **Costume room and props room** – We use this room promoting vocational skill and independent living skills; we need this room to be re-designed. We would like it to look like a shop where everything will be displayed in relevant areas. Job roles and routines will be put in place.
- **Managers office and reception area** – These rooms are for meetings and for the CEO, Assistant manager and the bursar to use as their work base.
- **Floristry/ plant stall/ Poly tunnel** – This is set up in a different department to create and make the stock, but the stock is then sold on t the local popup markets. The members feel that they are in a real work setting creating seasonal floral tributes and displays. They also learn about seasonal gardening and horticulture skills.
- **We have created an edit suite** – This is so that staff have a quiet productive room where they can edit footage in a purpose-built room.
- **Tool store** for power tools for named staff and caretaker to use.

Studio 2

We would like to create or update:

Performance Studios

- **Toilet facilities** – New facilities. These services are in need of an update so that they are accessible for all.
- **Door/Entrance** – This door way is in desperate need of replacing. This will create a more inviting entrance to this studio area.
- **Update and transform the Green Screen Studio. This room now needs to be bigger, due to popular attendance.**
- **The rehearsal room needs an update but at the moment we are sharing possible ideas for this change.**

Successes for studio 2 we have already achieved:

- **We have removed all bars** from around the doors at the entrance of the building so that it looks more pleasing to the eye. (This still needs a new door).
- **The dance studio is now transformed into a Performing Arts Theatre.** This will benefit One Vision members and the local schools/colleges / community groups and boost confidence throughout our One Vision members. This is used for teaching any of the Arts subjects. We are hoping to open this studio in the evenings or on Saturday, at some point, where we will be delivering various dance classes. We have a ballet bar and some large mirrors fixed to the walls. The stage area is amazing. We have a Tech room where the sound and lighting is operated. We have purchased tiered seating that opens up and closes by remote control. This theatre seats over 110 people.
- **Green Screen Studios and Editing Suites** – we have one Green Screen Studio and now that needs updating. This studio is used for film production, TV production and photography projects. This is also hired out when requested. We have noticed that some editing/computers needing fixing in place so they cannot be moved so we

need to create a framing idea so that they will be protected. **Our photography suite is now merged with the Green screen room**

- **Electrical stores** – This is beneficial to all departments. Most members and all staff know where to book out iPads, cameras, Lighting, extensions etc. These equipment's are monitored, checked and care for in a more efficient way.
- **We have a social room called Studio 24/rehearsal room** – This is so that our members learn how to socialise with their peers. It will help them make choices for themselves in friendships etc. and will also build confidence too. Also when not in social time, this room will be used as an additional rehearsal studio.

Studio 1

We would like to create or update:

Leisure and Recreation Studios' 1:

- **Volunteer group** – This group will be welcomed in to One Vision. We will have planned jobs prepared for this group so that they feel valued. They will also be jobs that will help the development and progress of One Vision. The volunteers will all dine together as a thank you for their kindness. In school holidays, we would encourage families too.
- **Toilets** – has been cleaned up/painted. However, we need to refurbish these areas.
- **We would like to update the tables and chairs within this dining room.** The ones that we have were pre owned, they look nice but we are in need of new ones.

Successes for studio 1 Leisure and Recreation:

We have already achieved...

- **Library /reading space**
- **A Training Kitchen – (It looks amazing)** this venture will be linked to our ‘Task Master’ projects. It will give learners the knowledge and understanding of working in a kitchen and hopefully some will progress into the catering kitchen. Our Members and staff will cater for smaller groups of One Vision members and staff on a daily basis. They will provide foods and drinks for breaks and lunchtime. The Task Masters will grow products, on our grounds, to use in this venture. People / families / groups: who volunteer at One Vision, for the day, will dine with us in a ‘Come Dine with Me’ project. This will be a wonderful experience for all involved.

We have given the outside building a facelift refurbishment, with new windows, wall panelling/fascia boards, guttering etc.

We have created an amazing social building for all our members and staff to dine in style.

Most interior walls and the layout of the building has been re planned.

- **Reception** – For a meet and greet area. The main reception where our quality performance staff are based.
- **Personal care suites**, this has had a full refurb with gorgeous tiles donated by a local shop, ‘Top for Tiles’. We have added a new hoist and a beautiful cloud/ sky effect lighting.
- **Toilets – has been cleaned up/painted**
- **Dining areas.** Wow! This area is gorgeous; it is promoting dining skills and etiquette.
- **Drinks and coffee bar** Promoting functional maths and English.
- **Snooker Zone** promoting social skills and respect for one another.
- **Hospitality and catering Kitchen** - This venture will be linked to our ‘Task Master’ projects. Our Members and staff will cater for all One Vision members and staff on a daily basis. They will provide foods and drinks for breaks and lunchtime. This will also be a standalone business creating jobs and work experiences too. The Task Masters will grow products, on our grounds, to use in this venture. People / families / groups: who volunteer at One Vision, for the day, will dine with us in a ‘Come Dine with Me’ project. This will be a wonderful experience for all involved.
- **First aid room**
- **Staff room and staff kitchen**
- **Cleaning store.**

Plans – we would like to.

We are in plans to see if we can integrate a **swim spa** room within our service. This will promote health and wellbeing as well as promote any physiotherapy needs for relevant members. This idea/plan has got the local NHS/Complex Care Team very excited.

We have ordered all new signage for the site - external and internal. These should be fitted in 2026.

OUTDOOR ACTIVITIES:

Crafts, Groundwork and Maintenance team – this job will cover some of the projects planned for One Vision's TASK MASTERS, volunteer groups' and work placement volunteers.

Examples of jobs will be: Creating craft and garden items for the shop and our grounds / Creating and decorating rooms / Gardening / Maintaining the sensory Garden / Tending to the allotment / working in the café, shop or workshops and there are many more opportunities to get involved.

Health and wellbeing outdoor projects:

At One Vision, we are promoting the great outdoors. We have noticed that more of our members do not get out much when they are at home; some have prescribed Vitamin D tablets. From this, we plan to create various outdoor spaces:

- A sensory garden.
- The Enchanted Wood.
- A performance area.
- A Story / reading space.
- Music space.
- Allotment.
- Outdoor classroom.
- Multi Use Games Area (MUGA Pitch).
- Cycle lanes / running track (This will promote independent travel skills, as members will learn how to drive a mobility scooter / power chair.
- Car parking bays
- **Create a sensory/memory garden in our grounds**
- **Address outdoor classroom/activity spaces within the One Vision grounds.** This will offer more choices, encourage socialising, chill out or learning zones,
- **Outdoor track** – This is next to the Health and Wellbeing department. This is for members to learn road awareness, use as a walking/running track, a bike lane for our tricycles
- **Claytons Garage** – (In memory of our beloved member who sadly passed away in September 2019). We had purchased the garage (Jan 2021). **This was set up but unfortunately, the strong winds demolished it. We are still hoping to fund raise for a better, more robust garage.** This garage offered car washing and valeting service. We also teach our members to carry out basic car maintenance too. We link with Wigan College as part of this experience. We teach cycle maintenance as we have our own Tricycles for our members. (We have

purchased two Trikes and had three more donated) We teaching maintenance for these bikes using our construction room.

Successes for Outdoor activities:

- **‘Granville’s Shed’**. This is now a beautiful floristry workshop called ‘Granville’s Shed’ and also has an outdoor learning/ leisure area attached to it. The local college and a local company, Milliken, has been working on this project change and is now completed. They have been out to volunteer once again this year to update the paintwork and to fill the planters around this building with amazing plants.
- **Rosie’s Place - We have been renting our first One Vision house (Next door to our site) The house and gardens are being renovated so that there are no barriers; it will suit everyone’s needs.** This house is set out just like a home. This house will give our members various skills for independence, job roles of work experience as well as creating jobs for local schools/community groups etc.
- We have our own **poly tunnel** where we grow seasonal plants to donate and sell on to others at pop up markets.
- **We are still linking with the local College** - Wigan and Leigh College/UCLAN University Wigan Campus, St John Rigby College. We provide SEN train to the students and staff their and also provide work placements for various departments/professional courses.
- We have been continuing to clear other areas that was extremely untidy or had not been tended for a while.
- We are renting two storage containers so that we can store furniture, scenery for shows, tech equipment in.
- We have relayed a patio area for outdoor dining and behind the theatre.

Other Successes

Staff have gained additional qualifications

A number of our support staff have gain level 2 and level 3 qualifications in Health and Social Care. We have also signed others up for these qualifications for this new academic year.

Laura Elwick has qualified as a teacher (Certificate in Education, Degree)

- We have been developing even stronger links with other schools, colleges, various organisations and community links; this is ongoing and hoping to build new links. .
- We have provided placements for students from mainstream schools and special schools, The Princes Trust - Ground Work Team, The Live Well Team, Local schools and Colleges, The Leaving Care Team to be educated in our setting focusing on employability skills. This link helps the students and job seekers to develop and make progress to the best of their ability in their life skills, independent living skills, academic skills, social skills and vocational skills.

Projects/Activities

- We have set up seasonal planning table, with approximately 12-week blocks and some 25-week blocks (depending on the project). All members are encouraged to make their own choices to choose which sessions that they want to

take part in, for their course. There are usually seven plus session choices per day. (Examples of the timetable choices can be seen at the beginning of this report) ...

- We also have a football team that enters annual tournaments set up by Wigan Athletic.
- We have just put on four shows now in our very own 'Hopes and Dreams Theatre', which was absolutely amazing and a dream come true. We are in the planning our next summer show. These showcase all that One Vision has to offer. From the showcase we create, DVD's, Tik Toks, Live Stream of it on social media, facebook posts and upload this works on to our website.
- We have even performed externally at various venues, and our biggest performance was at St Helens theatre Royal. This is a theatre that has a seating capacity of 700 people.
- We are promoting Independent Living Skills. We are doing this through a hospitality and catering project 'Come dine with me'. This will encourage healthy life styles and independent choice / skills. Our School and college love to link up with us for this.

We have had new flags laid at the back of Kenny G's diner. This has made the garden more accessible for wheelchair users. They will love this area even more in the nice weather.

Chairpersons' Report

By Naiomi Hamilton:

I am always overwhelmed with how much progress the One Visions team continues to make throughout each year. Whatever barriers are put in their way, they continue to make improvements. They are always coming up with new ideas, setting themselves new goals, new hopes of new dreams. The management then lead their team so that they all collaborate their talents and skills and all go out of their way and achieve.

I am very proud to be chairperson at One Vision Media.

In July 2017, One Vision took over the Hope Enterprise buildings and since then various changes have occurred (e.g. The recent pandemic) which has meant that other businesses no longer rent spaces off One Vision. One Vision have moved into these workspaces bringing vocational opportunities to their members such as Their prestigious Hope Cinema, Printing work shop, Art studio, Unique sewing studio, Music room, Education room, an activity room and a laundrette and a salon. Then the wonderful new theatre, WOW! It is just amazing.

I must take this opportunity to highlight that this progress is due to the strong leadership from **Kevin Rosental, The Chief Executive Officer and Natalie Hamilton the Assistant Manager**. They have an unbelievable passion to take One Vision Media on this incredible journey. They sort out their staff that are of a high standard for promoting caring qualities, education covering all areas of development that is always individualised to each member's level of knowledge, understanding and developmental ability. They take care of their staff by guiding and training staff so that they can follow a career path and also ensure that their members receive the best care and ensure personal progress for all.

The Company Bursar, Jude Baker and the Quality Assurance Officers, Wendy Yates and Angela Hendry strive to develop the business. This is recognised by the local council in the form of recognition on 'The Ethical Framework'. The Council have standards that you have meet in order to achieve this recognition. There are only 11 companies on this framework, who are in LOT 7 – Social Settings.

The amazing staff make the learning and care fun whilst promoting individualised targets and learning for all, with focus on each member's personal progress in Health and Wellbeing, Life Skills, Independent living skills, education or vocational skills. All of these are important but I do like the fact that they focus on each person's dreams and wishes too.

It gives me great pleasure to thank this outstanding team for all that they do to bring smiles and sunshine to everyone day. Their positivity, enthusiasm and hard work makes a difference to the members and their families. The staff are constantly knocking down any barriers that stand in their way, ensuring all members make progress to reach their individual goals, wishes dreams and aspirations. They are diverse in their planning and in their delivery of their sessions. The same ethos is shared throughout the staff team, encouraging all staff to create their own career ladder. The staff encourage and support each other to develop their skills in various training opportunities so that they reach their own dreams and beyond.

I must still reflect on the way that One Vision handled the pandemic so that they could stay open and the fact that they continue to support all post pandemic. They have bought into a company that supports and provides counselling in many areas for their staff and their families so that we then can support our members and their families to the best of their abilities.

The staff have been inspirational, truly selfless. They continue to put the members before themselves, going out of their way to ensure normality for each day. Staff continue to work with a big smile their voices and spirits remain passionate and happy, they are truly inspirational.

The feedback that I hear from Families and visitors to One Vision - The comments I hear and what I read on facebook are always heart-warmingly positive. They constantly highlighting the overwhelming feeling of love, fun, laughter and positivity that radiates throughout this wonderful place. I am so proud to be the chairperson/ Trustee for One Vision.

I would like to thank the companies that support One Vision Media throughout the year. These companies help make One Vision an incredible place.

Milliken Flooring – in the past, for painting more of the corridor walls at One Vision and for donating extra carpet/tiles so that we could carpet additional rooms extra too. This year in November, they held a family Christmas event in which they have stated that some of the profits made from this event will be donated to One Vision. Milliken have chosen One Vision as their chosen charity.

We very grateful for the support from our educational links that use our service:

List of Services, Clubs & Societies

- Hope school and College, Wigan.
- West Lancashire Community High School.
- Applebee Wood Primary School.
- Wigan Councils, Supported employment team. (Work Placement courses)

- The Music Project Wigan.
- Deanery high school. Wigan.
- St John Rigby College. Orrell.
- James Rosental's Dance Company & Co.
- Wigan Council Volunteer/Community group.
- Wigan Council social services.
- Landgate school and College, Wigan
- Oakfield School and College, Hindley, Wigan.
- Wigan and Leigh College, Wigan Campus.
- St Helens College
- The Princes Trust Scheme, Groundwork team.
- The Live well team, Wigan.
- Leaving Care Group
- War grave House School/Leap College
- Miss Sutcliffe's Academy of Dance.

From the last report, the management and their team have developed spaces so that recreational time and wellbeing will be organised in promoting social skills for all as well as vocational skills for some, this is in Kenny G's Diner and its surrounding grounds of our Studio 1 building.

The ongoing plans for the outside spaces are very exciting and I honestly cannot wait to see all the members' faces working in all of these areas when the work is completed. I know that these ideas do take time to achieve but the drive the One Vision team has, I know that these dreams will come true.

Organisational Chart (Insert here who makes up your organisation – names, roles, responsibilities (e.g. treasurer secretary etc.))

Roles:	Responsibilities:	Names:
Chair Person of Trustees	To organise and lead the Trustee meetings. To support the service of One Vision.	Naiomi Hamilton (ASDA)
Trustee	To organise and lead the Trustee meetings. To support the service of One Vision.	Natalie Sweet (Winstanley Primary School)
Trustee	To organise and lead the Trustee meetings. To support the service of One Vision.	Sharon Jeffers Self-employed, Cleaning business)
Trustee	To organise and lead the Trustee meetings. To support the service of One Vision.	Sharon Knight (Hope School)
Trustee	To organise and lead the Trustee meetings. To support the service of One Vision.	Gill Davies (Hope School)
Trustee	To organise and lead the Trustee meetings. To support the service of One Vision.	Jenny Glynn (Swift Training Company)
Trustee	To organise and lead the Trustee meetings. To support the service of One Vision.	Martin Mahoney (St John Rigby College)
Trustee	To organise and lead the Trustee meetings. To support the service of One Vision.	Sandra Gough (Oak field SEN School)
Chef Executive Officer	As CEO of One Vision Studios working closely with the board of trustees, I am responsible for managing, creating,	Kevin Rosental

	<p>planning and implementing the strategic direction vision and growth of the organisation. I am proud to say that along with the help of members of a free speech group back in 1998 I was one of the founders of the organisation. With the input from our amazing students and staff team, along the way we have been on an incredible journey and together have steered One Vision to what it is today. It is such a great organisation to work for and I just wouldn't want to be anywhere else, a dream come true</p>	
Assistant Manager / Teacher	<p>To assist in the management and promote the organisation. To promote the members progress / qualification as curriculum lead. Session planning/ setting new targets. Monitoring and measuring members' progress. Assessing members in various areas ensuring achievement. Reviewing sessions and members progress. Tracking members' performance. Writing reviews. Attend meetings. Deliver and Teach sessions. Support other staff and members within sessions and assist with members personal care, medical needs, with independence and any other needs required. Natalie joined the team in February 2018 after 20 years teaching at Hope School and College. She brings with her</p>	Natalie Hamilton

	<p>a wealth of experience in supporting individuals with additional needs as well as managing behavioural strategies. She joined the senior management team at Hope in 2010 and was transition co-ordinator for the College leavers as well as promoting employability.</p>	
Project Development Officer and Bursa	<p>To carry out all required admin tasks Plan trips and events etc. To support and carry out all company finance</p>	Jude Baker
Teacher and Assistant Quality Officer	<p>To source funding To develop the quality standard To monitor and develop staff and students in training / qualifications (Also see teacher section)</p>	Angela Hendry
Senior Leadership team Heads of Department Teachers	<p>To assist the assistant manager to promote the members progress / qualification as assistant curriculum lead. To lead staff in various departments promoting high standards when delivering sessions to develop our members learning and development. Session planning/ setting new targets. Monitoring and measuring members' progress. Assessing members in various areas ensuring achievement. Reviewing sessions and members progress. Tracking members' performance. Writing reviews. Attend meetings. Deliver and Teach sessions.</p>	<p>SLT/ HofD/ Teachers Lynne Harrison Louise Carter Joanna Sweet</p> <p>HofD/ Teachers Danielle Banks Megan Bibby</p>

	Support other staff and members within sessions and assist with members personal care, medical needs, with independence and any other needs required.	
Teachers Tutors Pre Teachers	<p>To assist the assistant manager to promote the members progress / qualification as assistant curriculum lead.</p> <p>Session planning/ setting new targets.</p> <p>Monitoring and measuring members' progress.</p> <p>Assessing members in various areas ensuring achievement.</p> <p>Reviewing sessions and members progress.</p> <p>Tracking members' performance.</p> <p>Writing reviews.</p> <p>Attend meetings.</p> <p>Deliver and Teach sessions.</p> <p>Support other staff and members within sessions and assist with members personal care, medical needs, with independence and any other needs required.</p>	<p>Angela Hendry Stuart Naylor Laura Elwick Bethan Mason Joanne Taberner Rachel Jones Angela Charnock</p>
Session Leader – Level 3	<p>To study qualified teachers (above) to complete their teaching role...</p> <p>To promote the members progress / qualification as assistant curriculum lead.</p> <p>Session planning/ setting new targets.</p>	<p>Emma Case Katie Winnard Kath Phelan Stacey Rigby (Apprentice level 3) Amanda Moore</p>

	<p>Monitoring and measuring members' progress.</p> <p>Assessing members in various areas ensuring achievement.</p> <p>Reviewing sessions and members progress.</p> <p>Tracking members' performance.</p> <p>Writing reviews.</p> <p>Attend meetings.</p> <p>Deliver and Teach sessions.</p> <p>Support other staff and members within sessions and assist with members personal care, medical needs, with independence and any other needs required.</p>	
Session Worker – Level 2	<p>Session planning.</p> <p>Monitoring and measuring members' progress.</p> <p>Assessing members in various areas ensuring achievement.</p> <p>Reviewing sessions and members progress.</p> <p>Tracking members' performance.</p> <p>Deliver and Teach sessions.</p> <p>Support other staff and members within sessions and assist with members personal care, medical needs, with independence and any other needs required.</p>	<p>Cassandra Hammond Jack Bamber Kleo Loporcher</p>

Session Support worker – Level 1	<p>Assessing members in various areas ensuring achievement.</p> <p>Reviewing sessions and members progress.</p> <p>To support staff and members within sessions, personal care, medical needs with independence and any other needs required.</p> <p>Carry out cleaning/Domestic duties.</p>	<p>Rita Carletti Tamzin Taylor Lara Boland Zara Ince Amy Causey Kimberley Bolton Chloe Lawrence Jessice Green-Howard Mia Elwick</p>
Apprentice ‘Session support worker’.	To support staff and members within sessions, personal care, medical needs with independence and any other needs required.	Becca Jones (Apprentice)
Apprentice Site care take and Session support worker.	To look after the site and buildings whilst supporting staff and members within sessions, personal care, medical needs with independence and any other needs required.	
Apprentice Office Admin	To work with the admin, vocation and management to carry out various tasks.	
College/Uni students on work placements linked to a qualification / Apprenticeship / T-Level / Degree etc.	To support staff and members within sessions - if applicable to their course or Qual... to support also with... personal care medical needs with independence and any other needs required.	<p>St John Rigby College x 4 students (Health & Social care, level 3)</p> <p>Wigan & Leigh College x 2 students (T – Levels)</p> <p>Wigan & Leigh College x 6 students (Health & Social Care, level 2 & 3)</p> <p>Wigan & Leigh College x 1 students (Teacher)</p>

		Winstanley College – 2 T Level students.
Volunteer (or covering bank staff when needed for Session Support worker – Level 1)	Support in various job roles as a Session Support worker – Level 1	Ella Guest Millie Gallagher Shannon Woosey Thomas Baxendale
Volunteer/s	Support in various job roles as a Session Support workers on college placements etc.	Marsh Green Chaplaincy Team Miss Sutcliffe's Academy of Dance (Teacher and students) Lisa Burgess – clerical volunteer

Building Management – Kevin Rosental.

- **Please look at our Plans for the future under the heading ‘Plans - We would like to’. These are the plans that management will be project managing over the next year onwards.**
- As we are a service for people with severe disabilities, we are continuing to create new pathways and easy access ramps so that independence in traveling around the site is safer and achievable.
- We have created a beautiful social and dining area last year but extended this to an outdoor dining space/outdoor learning space this year.
- We have updated and created new risk assessments for all rooms and areas, created systems etc. to cover all healthy and safety aspects since the COVID – 19 Pandemic changes/updates. (This is still ongoing as we are continually being updated from ‘Public Health England’ of changes)
- The grounds are continually being cleared, tended to and developed to create new outdoor spaces. We have linked up with Wigan & Leigh College Horticulture / Groundwork / Hard landscaping and Joinery courses to work on the grounds. Together we can make our dream a reality. We have also started a project to add new walls and fencing to the Scot Lane side of our site so that the site and the people using our site are in a safer space.
- We are renting the house next door, and a refurb project is now completed This refurb has made this house accessible for all who attend our service. This refurb work better for our members, promoting independent living skills etc. This also provides this same service for any students who link with us from other schools and colleges.

Concerns

Our concerns for the future are mainly, as always, the upkeep of the building as it is an old building and needs repairs and refurbishments. The focus is to update the toilets so that they are accessible for all and our members can be as

independent as possible. However, we and the help of the local college construction/plumbing department have helped to brighten them up, but they still are in need of the refurbishment. Some of the ceilings are leaking in a couple of units, the doorframes and windows need addressing too.

The toilets will need specialist contractors as the floors in some areas hold asbestos.

We are pleased to say that the local council has promised to donate some volunteer days to our charity. This is where various trades will come in to carry out work needed throughout their volunteer project week. Our fingers and toes are all crossed that this will happen.

Users Comments: One-Vision Members.

“It’s a very special place full of so much love, fun and laughter”. Sandra Lawton.

“You are absolutely amazing, well done everyone; you are all so kind and thoughtful”. Sandra Gough.

“Fantastic, You all work so Hard.” Carol Huber.

“Natalie and Kevin, What an amazing duo you are!! Lots of hard work pays off and your One Vision family will absolutely love the opportunities that the cinema will bring them.” Samantha Swan (Teacher at Bryn, St Peters Primary)

“Well done to all involved, you should be so proud of yourself.” Joan Grundy

“Fantastic place with fantastic people who go out of their way to make sure all members are looked after and most of all have fun making life worthwhile, thank you to everyone who looks after my daughter, she is so happy.” Diane Brown.

“Carry on with all the amazing work you do. So proud and grateful that my grandson has the privilege of being part of your team.” Kath Lisle.

“Every day I wake up and feel so proud to be part of the One Vision team. Our members and staff are amazing and there’s no place I’d rather be.” Stacy Rigby (One Vision Staff)

Just wanted to let you know how much my daughter is enjoying herself at One Vision. She really loves coming. She had a fab time trampolining. It is great that she is taking part in so many activities. She is living the dream! Thanks – Cathy, parent.

Members at One Vision are the core element of the organisation; everyone is unique, with their own personality, character, fears and dreams. Many often have hidden assets and strengths that help them to cope with the challenges that life has set them - strengths that can easily be overlooked or unrecognised. Genuinely, trying to view the world through the eyes of the member, gives great insight into the behaviours, difficulties, emotions, anxieties and the daily struggles that they are faced with. Before we can fully understand the issues faced and feelings of another person, perhaps we must first see the world as he or she does – then we can really start to have an impact/make a difference’. This methodology, which identifies true understanding, creates real empathy and nurtures creative and innovative ways of working, which generates positive, reliable outcomes that have an impact on lives by focusing on what they can do and upskilling people to develop independence, confidence to have hope for the future and a pathway of choice and for all areas of their lives. ‘Quote from a Social Worker’

I wrote this the other week whilst having a bit of reflection on my change of 'career' so to speak and putting together things for my review - Joanna Sweet, Head of Performing Arts



One Vision

Being Happy

This is a peaceful place,

I feel relaxed.

This is a happy place,

I feel wanted.

This is a fun place,

I feel excited.

This is a safe place,

I feel cared for.

This is an encouraging place,

I feel brave.

This is a creative place,

I feel interest.

Getting My Personality Back

This is a reflective place,

I feel constant.

This is new opportunities place,

I feel a voyage of discovery.

This is a new chances place,

I feel if gives me hope.

This is a dreams place,

I feel I'm always looking forward.

This is a fascinating place,

I feel positive.

This is a new thoughts place,

I feel new dimensions of myself.

Progression of the New Soul

This is a perceptive place,

I feel confident.

This is a Tomorrow Land,

I feel strong.

This is a moving place,

I feel like I'm not looking back.

This is a comfortable place,

I feel passionate.

This is an interactive place,

I feel together as one.

This is a powerful place,

I feel stronger...

By Chris Parker – One Vision Member

One Vision

The reason behind

This is an invigorating place,
I feel a tide of energy.

This is a rich and positive place,
I feel a rush of contentment and peace.

This is a friendly place,
I feel connections.

This is a creative place,
I feel cleverer.

This is an elaborative place,
I feel myself bewildering.

Getting My Personality Explored

This is an excellent and perspicacious place,
I feel intelligent and exceptional.

This is an aspiring place,
I feel my ambition fuels the enterprise of my dreams.

This is a good place for faculty,
I feel my imagination, like a reflection.

This is a supportive place,
I feel the assistance making me updated.

This is a comfortable place,
I feel born ready.

This is a strong place,
I feel everyone gathering together.

The Exploration of Self

This an understanding place,
I feel traversed.

This is a talented place,
I feel validated.

This is a determined place,
I feel hungry for my dreams.

This is an inspiring place,
I feel transmitted.

This is a detailed place,
I feel respected.

This is an independent place,
I feel myself...

By Ethan Kelly - One Vision Member

I feel very fortunate to be able to work in partnership with One Vision from a social care perspective. The staff team work tirelessly to ensure that their attendees have the best experience possible, are made to feel valuable and included members within their local communities, have ample opportunities made readily available to them and most importantly always have smiles on their faces. The staff here are the most committed and passionate group of people I have had the good fortune to work alongside in many years and it is evident that they have the best interests of their attendee's at the forefront of their minds at all times.

Quote from a Social Care Officer.

Staff comments - blue
Members comments - green



"I just think they are brilliant, and I love them!" – Social Care Officer Supervisor

The Friends Bus was created during the Covid-19 pandemic for members who needed to self isolate, were unable to come to the center and were missing their friends

The bus visits each member's house to entertain and perform for them making lockdown life just that bit easier

INSERT COMMENTS/PHOTOS

FRIENDS



Following on from the wonderful success of the Friends Bus.....we are pleased to announce the Games Show Bus

"I have been a social worker in Wigan for 11 years now – I think that One Vision is the best of the community enterprises and is the one I would recommend for anyone of my family or friends" – Social worker.

Group Comments

Hope school and college: This is a great place to be a part of. The students gain a range of experiences through their timetabled sessions every week. They are part of an annual show that builds confidence in both students and staff self-esteem. It is so good I would like to work here.

Oak Field School and college: We use One Vision for taster days and school/college links. We appreciate that One Vision always supports our students to develop their work experiences through regular work placements.

Hawks cheer leading team: The dance studio is ideal for us. It is a good dance space with a great floor. The site has good car parking space too. The staff are friendly and nothing is ever a problem.

Desmond Family Canoe Trail / Canal and River Trust: This is a fantastic place with great facilities. We do not have these facilities in the Hub 'our venue'. One Vision have kindly agreed to get involved in our projects and we have started to use this venue for our construction projects. This is where we bring other schools, clubs or colleges to One Vision to produce the items that we need to support The Canal Trusts projects.

James Rosental & Co Dance Company: This is just perfect for what we need so that we can rehearse for my company's projects. We have recently choreographed a project at One Vision and used it as a base for a whole week. In this week we produced a Wigan funded project called 'Wigan Born and Bread'.

'Social care officer'

One Vision have always been renowned locally for their innovative thinking and the creative approach they take to supporting their attendee's. Due to recent circumstances, accessing services has obviously been increasingly difficult for individuals with learning disabilities, physical disabilities, and associated health needs due to Covid- 19 but this has not deterred One Vision. They have remained dedicated throughout to providing a service to their attendee's and families to ensure everyone has support in place where it is required.

I have had the pleasure of supporting many individuals to attend One Vision over the years and have only ever seen positive results. Individuals thrive at One Vision, they become more independent and we tend to see an increase in their confidence because of the work they undertake. Attendees are given unbelievable opportunities such as viewing their own short films on the local cinema screen with loved ones and professionals viewing together alongside ongoing work to develop independent skills, make and develop friendships and relationships and to have increased community access.

I know that One Vision is appreciated, loved, and respected by all those who attend, but also by the families, carers and professionals who support all the attendees. The ongoing support is so greatly appreciated by all of the above and as a whole we can't wait to see this fantastic provision go from strength to strength, expanding their offer wherever possible to meet the needs of individuals in borough that would benefit from their input and support.

Parents comments – purple
Social Worker comments – orange

"I just think they are brilliant, and I love them!!" – Social Care Officer Supervisor.

Our son thoroughly enjoys the wide array of social and learning opportunities offered to him by the excellent staff team there and we are not aware of any such flexibility and understanding being offered elsewhere – parents of TC

I have a young gentleman and at the present time One Vision are picking him up 3 days a week due to the situation with COVID and he is doing well. Mum said that if he didn't have this he would just be sitting in his room.

*You all work miracles there. Fantastic. It just goes to show you members feel so at home. They relax look at the results x
parents of LD*



*One Vision – you are all amazing! Kevin and Natalie should have their own TV show! Well done to all the staff team –
parents of JB*

I have been a social worker in Wigan for 11 years now – I think that One Vision is the best of the community enterprises and is the one I would recommend for anyone of my family or friends – Social worker.

*We cannot thank you all enough...the change in our daughter since she has left college and started with you is absolutely amazing. Her confidence has more than doubled. You have helped to make the transition process a walk in the park!!
❤️ – parents of SD*

Supporting Health and wellbeing going the extra mile:

“I have a young gentleman and at the present time they are picking him up 3 days a week due to the situation with COVID and he is doing well. Mum said that if he didn't have this he would just be sitting in his room. This way albeit not everyone is attending he is seeing some of his friends because up until last week he wasn't even seeing his PA on a Saturday.”

– Social Care Officer.

“I have a client with a Severe Learning Disability and challenging behaviours who has been accessing One Vision for a considerable length of time. After my client having numerous agencies supporting him, One Vision is the only service that has been sustainable to meeting his challenging care and support needs that has proved to be very positive with regards to his independence, health and wellbeing. My client really looks forward to attending and he has built really good relationships with the staff.

His mother has nothing but praise for the staff and Manager(s) at One Vision and my experiences has a Social Worker would agree with her comments. I have always found the Manager(s) and staff very helpful, experienced and compassionate about what the service offers and strives to make a positive difference to lives of vulnerable people,

Carers and families.” – Social Worker

I hope that this provides some insight into the ongoing work that One Vision are doing within their local community and highlights how highly thought of they are by all that meet them. They truly are a fantastic asset to Wigan and the passion, empathy, and drive that the staff have to support vulnerable individuals within our local area is irreplaceable.

‘Transition Social care officer’

Company registration number: CE003737
Charity registration number: 1160946

**ONE VISION MEDIA
TRUSTEES' REPORT AND
FINANCIAL STATEMENTS
FOR THE YEAR ENDED 31 MARCH 2025**

One Vision Media Contents

	Page
Trustees' Report	1—2
Independent Auditor's Report	3—6
Statement of Financial Activities (including Income and Expenditure Account)	7
Comparative Statement of Financial Activities (including Income and Expenditure Account)	8
Balance Sheet	9
Statement of Cash Flows	10
Notes to the Statement of Cash Flows	11
Notes to the Financial Statements	12—18
The following pages do not form part of the statutory accounts:	
Detailed Statement of Financial Activities (including Income and Expenditure Account)	19—20

**One Vision Media
Company No. CE003737
Trustees' Report For The Year Ended 31 March 2025**

The trustees present their report and the financial statements for the year ended 31 March 2025.

Objectives and Activities

Aims and Objectives

To advance the education of people with disabilities through the provision of:

An alternative community based training and activities programme in film and media education.

A person centred, needs led approach to learning and support that will enable individuals to make informed choices about themselves and their education.

A service that will work with other local groups and organisations to promote and improve community cohesion.

A service that will raise awareness of disability arts in the Wigan borough through participation in events and local arts and disability arts festivals.

To promote social inclusion for the public benefit by preventing people with disabilities from becoming socially excluded, relieving the needs of those people who are socially excluded and assisting them to integrate into society through the provision of:

Alternative education opportunities that address a shortfall in mainstream services.

A person centred service that will improve wellbeing, personal and social development.

Reference and Administrative Details

Trustees

Mr Martin Malone - Trustee (appointed 24/04/2024)

Miss Sharon Jeffers - Trustee

Miss Sharon Knight - Chair (appointed 30/04/2025)

Miss Natalie Sweet - Trustee (appointed 30/04/2025)

Miss Naomi Hamilton - Trustee (appointed 30/04/2025)

Charity Number

1160946

Company Number

CE003737

Accountants

Fisher & Co (Accountants) Limited

Pemberton Business Centre

Richmond Hill, Pemberton

Wigan

WN5 8AA

Auditors

ADC Accountants Limited

15 Market Street

Standish

Wigan

Lancs

WN6 0HW

**One Vision Media
Trustees' Report (continued)
For The Year Ended 31 March 2025**

Statement of Trustees' Responsibilities

The trustees (who are also the directors of One Vision Media for the purposes of company law) are responsible for preparing the Trustees' Report and the financial statements in accordance with applicable law and United Kingdom Accounting Standards (United Kingdom Generally Accepted Accounting Practice).

Company law requires the trustees to prepare financial statements for each financial year. Under company law the trustees must not approve the financial statement unless they are satisfied that they give a true and fair view of the state of affairs of the charitable company and of the incoming resources and application of resources, including the income and expenditure, of the charitable company for that period. In preparing the financial statements the trustees are required to:

- select suitable accounting policies and then apply them consistently;
- observe the methods and principles in the Charity SORP;
- make judgments and accounting estimates that are reasonable and prudent; and
- prepare the financial statements on the going concern basis unless it is inappropriate to presume that the company will continue in business.

The trustees are responsible for keeping adequate accounting records which disclose with reasonable accuracy at anytime the financial position of the charitable company and to enable them to ensure that the accounts comply with the Companies Act 2006. They are also responsible for safeguarding the assets of the company and hence for taking reasonable steps for the prevention and detection of fraud and other irregularities.

The trustees are responsible for the maintenance and integrity of the corporate and financial information included on the charitable company's website. Legislation in the United Kingdom governing the preparation and dissemination of financial statements may differ from legislation in other jurisdictions.

Statement of Disclosure of Information to Auditors

Each of the persons who are trustees at the time when this trustees' report is approved has confirmed that:

- so far as the trustee is aware, there is no relevant audit information of which the charitable company's auditors are unaware; and
- they have taken all the steps that they ought to have taken as trustees in order to make themselves aware of any relevant audit information and to establish that the charitable company's auditors are aware of that information.

Small Company Rules

This report has been prepared in accordance with the special provisions relating to companies subject to the small companies regime within Part 15 of the Companies Act 2006.

The trustees' report was approved by the board of trustees and signed on its behalf by:

Miss Sharon Jeffers

Trustee
19/01/2026

Independent Auditor's Report to the Members of One Vision Media

Opinion

We have audited the financial statements of One Vision Media (the "charity") for the year ended 31 March 2025 which comprise the Statement of Financial Activities (including Income and Expenditure Account), Balance Sheet, Cash Flow Statement and the related notes, including a summary of significant accounting policies. The financial reporting framework that has been applied in their preparation is applicable law and United Kingdom Accounting Standards (United Kingdom Generally Accepted Accounting Practice), including FRS 102 "The Financial Reporting Standard applicable in the UK and Republic of Ireland".

In our opinion the financial statements:

- give a true and fair view of the state of the charitable company's affairs as at 31 March 2025 and of its incoming resources and application of resources, for the year then ended;
- have been properly prepared in accordance with United Kingdom Generally Accepted Accounting Practice; and
- have been prepared in accordance with the requirements of the Companies Act 2006.

Basis for Opinion

We conducted our audit in accordance with International Standards on Auditing (UK) (ISAs (UK)) and applicable law. Our responsibilities under those standards are further described in the Auditor's responsibilities for the audit of the financial statements section of our report. We are independent of the charitable company in accordance with the ethical requirements that are relevant to our audit of the financial statements in the UK, including the FRC's Ethical Standard, and the provisions available for small entities, in the circumstances set out in note 21 to the financial statements, and we have fulfilled our other ethical responsibilities in accordance with these requirements. We believe that the audit evidence we have obtained is sufficient and appropriate to provide a basis for our opinion.

Conclusions Relating to Going Concern

In auditing the financial statements, we have concluded that the trustees' use of the going concern basis of accounting in the preparation of the financial statements is appropriate.

Based on the work we have performed, we have not identified any material uncertainties relating to events or conditions that, individually or collectively, may cast significant doubt on the charitable company's ability to continue as a going concern for a period of at least 12 months from when the financial statements are authorised for issue.

Our responsibilities and the responsibilities of the trustees with respect to going concern are described in the relevant sections of this report.

Other Information

The other information comprises the information included in the annual report, other than the financial statements and our auditor's report thereon. The trustees are responsible for the other information contained within the annual report. Our opinion on the financial statements does not cover the other information and, except to the extent otherwise explicitly stated in our report, we do not express any form of assurance conclusion thereon. In connection with our audit of the financial statements, our responsibility is to read the other information and, in doing so, consider whether the other information is materially inconsistent with the financial statements or our knowledge obtained in the audit or otherwise appears to be materially misstated. If we identify such material inconsistencies or apparent material misstatements, we are required to determine whether this gives rise to a material misstatement in the financial statements themselves. If, based on the work we have performed, we conclude that there is a material misstatement of this other information, we are required to report that fact.

We have nothing to report in this regard.

Independent Auditor's Report (continued)
to the Members of
One Vision Media

Opinions on Other Matters Prescribed by the Companies Act 2006

In our opinion, based on the work undertaken in the course of the audit:

- the information given in the Trustees' Report, which includes the Director's Report prepared for the purposes of company law, for the financial year for which the financial statements are prepared is consistent with the financial statements; and
- the Director's Report included within the Trustees' Report have been prepared in accordance with applicable legal requirements.

Matters on Which We Are Required to Report by Exception

In the light of the knowledge and understanding of the charitable company and its environment obtained in the course of the audit, we have not identified material misstatements in the Director's Report included within the Trustees' Report.

We have nothing to report in respect of the following matters in relation to which the Companies Act 2006 requires us to report to you if, in our opinion:

- adequate accounting records have not been kept or returns adequate for our audit have not been received from branches not visited by us; or
- the financial statements are not in agreement with the accounting records or returns; or
- certain disclosures of trustees' remuneration specified by law are not made; or
- we have not received all the information and explanations we require for our audit; or
- the trustees were not entitled to prepare the financial statements in accordance with the small companies regime and take advantage of the small companies' exemptions in preparing the Trustees' Report and from the requirement to prepare a Strategic Report.

Responsibilities of Trustees

As explained more fully in the Trustees' Responsibilities Statement set out on page 1—2, the trustees (who are also directors of the charitable company for the purposes of company law) are responsible for the preparation of the financial statements and for being satisfied that they give a true and fair view, and for such internal control as the trustees determine is necessary to enable the preparation of financial statements that are free from material misstatement, whether due to fraud or error.

In preparing the financial statements, the trustees are responsible for assessing the charitable company's ability to continue as a going concern, disclosing, as applicable, matters related to going concern and using the going concern basis of accounting unless the trustees either intend to liquidate the charity or to cease operations, or have no realistic alternative but to do so.

Independent Auditor's Report (continued)
to the Members of
One Vision Media

Auditor's Responsibilities for the Audit of the Financial Statements

Our objectives are to obtain reasonable assurance about whether the financial statements as a whole are free from material misstatement, whether due to fraud or error, and to issue an auditor's report that includes our opinion. Reasonable assurance is a high level of assurance, but is not a guarantee that an audit conducted in accordance with ISAs (UK) will always detect a material misstatement when it exists. Misstatements can arise from fraud or error and are considered material if, individually or in the aggregate, they could reasonably be expected to influence the economic decisions of users taken on the basis of these financial statements.

The extent to which our procedures are capable of detecting irregularities, including fraud is detailed below:

We obtained an understanding of the legal and regulatory frameworks within which the charitable company operates, focusing on those laws and regulations that have a direct effect on the determination of material amounts and disclosures in the financial statements. The laws and regulations we considered in this context were the Charities Act 2011 together with the Charities SORP (FRS102). We assessed the required compliance with these laws and regulations as part of our audit procedures on the related financial statement items.

In addition, we considered provisions of other laws and regulations that do not have a direct effect on the financial statements but compliance with which might be fundamental to the charitable company's ability to operate or to avoid a material penalty. We also considered the opportunities and incentives that may exist within the charitable company for fraud. The laws and regulations we considered in this context for the UK operations were General Data Protection Regulation and health and safety legislation.

We identified the greatest risk of material impact on the financial statements from irregularities, including fraud, to be within the timing and recognition of income and the override of controls by management. Our audit procedures to respond to these risks included enquiries of management and the Audit Committee about their own identification and assessment of the risks of irregularities, sample testing on the posting of journals, reviewing accounting estimates for biases, reviewing regulatory correspondence with the Charity Commission, and reading minutes of meetings of those charged with governance.

In accordance with International Auditing Standards, we planned our audit so that we have a reasonable expectation of detecting material misstatements in the financial statements or accounting records including any material misstatements resulting from fraud, error or non-compliance with law or regulations.

A further description of our responsibilities for the audit of the financial statements is located on the Financial Reporting Council's website www.frc.org.uk/auditorsresponsibilities. This description forms part of our auditor's report.

Use Of Our Report

This report is made solely to the charitable company's members, as a body, in accordance with Chapter 3 of Part 16 of the Companies Act 2006. Our audit work has been undertaken so that we might state to the charitable company's members those matters that we are required to state to them in an auditor's report and for no other purpose. To the fullest extent permitted by law, we do not accept or assume responsibility to anyone other than the charitable company and the charitable company's members as a body, for our audit work, for this report, or for the opinions we have formed.

Mr. Steven Hodson FCCA (Senior Statutory Auditor)
for and on behalf of ADC Accountants Ltd, Statutory Auditor

19/01/2026

...CONTINUED

Independent Auditor's Report (continued)
to the Members of
One Vision Media

ADC Accountants Ltd
15 Market Street
Standish
Wigan
Lancs
WN6 0HW

One Vision Media
Statement of Financial Activities (including Income and Expenditure Account)
For The Year Ended 31 March 2025

				2025	2024
		Unrestricted funds	Restricted funds	Total funds	Total funds
	Notes	£	£	£	£
INCOME AND ENDOWMENTS FROM:					
Donations and legacies	3	11,654	-	11,654	7,855
Charitable activities:					
Charitable Activities		-	5,390	5,390	4,570
Other trading activities	4	1,361,253	-	1,361,253	1,347,389
		<u>1,372,907</u>	<u>5,390</u>	<u>1,378,297</u>	<u>1,359,814</u>
EXPENDITURE ON:					
Charitable activities:	6				
Charitable Activities		(1,339,911)	(4,514)	(1,344,425)	(1,210,168)
NET INCOME		<u>32,996</u>	<u>876</u>	<u>33,872</u>	<u>149,646</u>
NET MOVEMENT IN FUNDS		<u>32,996</u>	<u>876</u>	<u>33,872</u>	<u>149,646</u>
RECONCILIATION OF FUNDS:					
Total funds brought forward		350,183	526	350,709	201,063
TOTAL FUNDS CARRIED FORWARD	17	<u>383,179</u>	<u>1,402</u>	<u>384,581</u>	<u>350,709</u>

The notes on pages 11 to 18 form part of these financial statements.

One Vision Media
Comparative Statement of Financial Activities (including Income and Expenditure Account)
For The Year Ended 31 March 2025

		2024		
		Unrestricted funds	Restricted funds	Total funds
	Notes	£	£	£
INCOME AND ENDOWMENTS FROM:				
Donations and legacies	3	7,855	-	7,855
Charitable activities:				
Charitable Activities		-	4,570	4,570
Other trading activities	4	1,347,389	-	1,347,389
		<u>1,355,244</u>	<u>4,570</u>	<u>1,359,814</u>
EXPENDITURE ON:				
Charitable activities:	6			
Charitable Activities		(1,206,242)	(3,926)	(1,210,168)
NET INCOME		<u>149,002</u>	<u>644</u>	<u>149,646</u>
NET MOVEMENT IN FUNDS		<u>149,002</u>	<u>644</u>	<u>149,646</u>
RECONCILIATION OF FUNDS:				
Total funds brought forward		201,181	(118)	201,063
TOTAL FUNDS CARRIED FORWARD	17	<u><u>350,183</u></u>	<u><u>526</u></u>	<u><u>350,709</u></u>

The notes on pages 11 to 18 form part of these financial statements.

**One Vision Media
Balance Sheet
As At 31 March 2025**

				2025	2024
		Unrestricted	Restricted	Total	Total
	Notes	funds	funds	funds	funds
		£	£	£	£
FIXED ASSETS					
Tangible Assets	11	325,671	-	325,671	334,473
		325,671	-	325,671	334,473
CURRENT ASSETS					
Debtors	12	85,415	-	85,415	36,659
Cash at bank and in hand		42,550	1,402	43,952	87,569
		127,965	1,402	129,367	124,228
Creditors: Amounts Falling Due Within One Year	13	(52,667)	-	(52,667)	(80,883)
NET CURRENT ASSETS (LIABILITIES)		75,298	1,402	76,700	43,345
TOTAL ASSETS LESS CURRENT LIABILITIES		400,969	1,402	402,371	377,818
Creditors: Amounts Falling Due After More Than One Year	14	(17,790)	-	(17,790)	(27,109)
NET ASSETS		383,179	1,402	384,581	350,709
FUNDS OF THE CHARITY					
Restricted Funds				1,402	526
Unrestricted Funds				383,179	350,183
TOTAL FUNDS	17			384,581	350,709

These accounts have been prepared in accordance with the provisions applicable to companies subject to the small companies regime.

On behalf of the board

Miss Naiomi Hamilton

Trustee
19/01/2026

The notes on pages 11 to 18 form part of these financial statements.

One Vision Media
Statement of Cash Flows
For The Year Ended 31 March 2025

		2025	2024
	Notes	£	£
Cash flows from operating activities			
Net cash generated from operations	1	23,996	239,478
Interest paid		(6,308)	(3,019)
Net cash generated from operating activities		<u>17,688</u>	<u>236,459</u>
Cash flows from investing activities			
Purchase of tangible assets		<u>(48,893)</u>	<u>(138,319)</u>
Cash flows from financing activities			
Repayment of finance leases		<u>(12,412)</u>	<u>38,474</u>
(Decrease)/increase in cash and cash equivalents		<u>(43,617)</u>	<u>136,614</u>
Cash and cash equivalents at beginning of year	2	<u>87,569</u>	<u>-</u>
Cash and cash equivalents at end of year	2	<u><u>43,952</u></u>	<u><u>136,614</u></u>

One Vision Media
Notes to the Statement of Cash Flows
For The Year Ended 31 March 2025

1. Reconciliation of income to cash generated from operations

	2025	2024
	£	£
Net income	33,872	149,646
<i>Adjustments for:</i>		
Interest expense	6,308	3,019
Depreciation of tangible assets	57,695	53,954
<i>Movements in working capital:</i>		
Increase in trade and other debtors	(48,756)	(36,659)
(Decrease)/increase in trade and other creditors	(25,123)	69,518
Net cash generated from operations	<u>23,996</u>	<u>239,478</u>

2. Cash and cash equivalents

Cash and cash equivalents, as stated in the Statement of Cash Flows, relates to the following items in the Balance Sheet:

	2025	2024
	£	£
Cash at bank and in hand	<u>43,952</u>	<u>87,569</u>

3. Analysis of changes in net funds

	As at 1 April 2024	Cash flows	As at 31 March 2025
	£	£	£
Cash at bank and in hand	87,569	(43,617)	43,952
Finance leases	(38,474)	12,412	(26,062)
	<u>49,095</u>	<u>(31,205)</u>	<u>17,890</u>

One Vision Media
Notes to the Financial Statements
For The Year Ended 31 March 2025

1. General Information

One Vision Media is a company limited by guarantee, incorporated in England & Wales, registered number CE003737 and registered charity number 1160946. The registered office is .

2. Accounting Policies

2.1. Basis of Preparation of Financial Statements

The financial statements have been prepared in accordance with the Charities SORP (FRS 102) "Accounting and Reporting by Charities: Statement of Recommended Practice applicable to charities preparing their accounts in accordance with the Financial Reporting Standard applicable in the UK and Republic of Ireland (FRS 102) (effective 1 January 2019)", Financial Reporting Standard 102 "The Financial Reporting Standard applicable in the UK and Republic of Ireland" and the Companies Act 2006.

The charitable company is a Public Benefit Entity as defined by FRS 102.

2.2. Incoming Resources

All incoming resources are recognized when the Charity has entitlement to the funds, certainty of receipt and the amount can be measured with sufficient reliability.

- Student fees

Recognised in the period they relate to.

- Grants Receivable

Grants are included in the Statement of Financial Activities on a receivable basis. The balance of income received for specific purposes but not expended during the period is shown in the relevant funds on the balance sheet. Where income is received in advance of entitlement of receipt its recognition is deferred and included in creditors as deferred income. Where entitlement occurs before income is received, the income is accrued.

- Donations

Donations are recognized on a receivable basis where there is certainty of receipt and the amount can be reliably measured.

- Other Income

Other income, including the hire of facilities, is recognized in the period it is receivable.

2.3. Resources Expended

All expenditure is accounted for on an accruals basis and has been classified under headings that aggregate all costs related to that category. Where costs cannot be directly attributed to particular headings, they have been allocated to activities on a basis consistent with use of resources. Grants are reflected in the balance sheet when a constructive obligation exists, notwithstanding that they may be paid in future accounting periods.

2.4. Tangible Fixed Assets and Depreciation

Tangible fixed assets are measured at cost less accumulated depreciation and any accumulated impairment losses. Depreciation is provided at rates calculated to write off the cost of the fixed assets, less their estimated residual value, over their expected useful lives on the following bases:

Leasehold	straight line 10 years
Motor Vehicles	25% reducing balance
Fixtures & Fittings	20% reducing balance

One Vision Media
Notes to the Financial Statements (continued)
For The Year Ended 31 March 2025

2.5. Leasing and Hire Purchase Contracts

Assets obtained under finance leases are capitalised as tangible fixed assets. Assets acquired under finance leases are depreciated over the shorter of the lease term and their useful lives. Assets acquired under hire purchase contracts are depreciated over their useful lives. Finance leases are those where substantially all of the benefits and risks of ownership are assumed by the charitable company. Obligations under such agreements are included in the creditors net of the finance charge allocated to future periods. The finance element of the rental payment is charged to the statement of financial activities so as to produce a constant periodic rate of charge on the net obligation outstanding in each period.

Rentals applicable to operating leases where substantially all of the benefits and risks of ownership remain with the lessor are charged to the statement of financial activities as incurred.

2.6. Cash and Cash Equivalents

Cash and cash equivalents are basic financial assets and include cash in hand and deposits held at call with banks, other short-term highly liquid investments that mature in no more than three months from the date of acquisition and are readily convertible to a known amount of cash with insignificant risk of change in value, and bank overdrafts.

3. Income from Donations and Legacies

	2025	2024
	Unrestricted funds	Unrestricted funds
	£	£
Donations and gifts:		
Donations and gifts	6,099	4,372
Fundraising	5,055	2,983
Grants:		
Grants	500	500
	<u>11,654</u>	<u>7,855</u>

4. Income from Other Trading Activities

	2025	2024
	Unrestricted funds	Unrestricted funds
	£	£
Training services	1,361,253	1,347,179
Room hire and transport	-	210
	<u>1,361,253</u>	<u>1,347,389</u>

One Vision Media
Notes to the Financial Statements (continued)
For The Year Ended 31 March 2025

5. Net Income/(Expenditure)

The net income is stated after charging/(crediting):

	2025	2024
	£	£
Depreciation of tangible fixed assets - owned	57,695	53,954

6. Analysis of Expenditure

	2025
	Support costs
	(see note 7)
	£
Charitable Activities	1,344,425

	2024
	Support costs
	(see note 7)
	£
Charitable Activities	1,210,168

7. Support Costs

	2025
	Charitable Activities
	£
Employee costs	1,038,093
Premises expenses	76,601
General administration	161,568
Depreciation	57,695
Interest payable	6,308
Governance costs	4,160
	1,344,425

One Vision Media
Notes to the Financial Statements (continued)
For The Year Ended 31 March 2025

2024
Charitable
Activities
£

Employee costs	902,584
Premises expenses	82,076
General administration	164,485
Depreciation	53,954
Interest payable	3,019
Governance costs	4,050
	1,210,168
	1,210,168

8. Auditor's Remuneration

Remuneration received by the charitable company's auditors and their associates during the year was as follows:

9. Staff Costs

Staff costs were as follows:

	2025	2024
	£	£
Wages and salaries	879,863	791,025
Social security costs	69,487	59,758
Other pension costs	45,260	22,384
	994,610	873,167
	994,610	873,167

The number of employees whose employee benefits (excluding employer pension costs) for the reporting period exceeded £60,000 was:

Year end 31 March 2025

£80,000 - £90,000	1
£110,000 - £120,000	1

2025 **2024**

10. Average Number of Employees

Average number of employees during the year was as follows:

	2025	2024
Charitable Activities	39	37
Administration	4	4
	43	41
	43	41

One Vision Media
Notes to the Financial Statements (continued)
For The Year Ended 31 March 2025

11. Tangible Assets

	Land & Property			
	Leasehold	Motor Vehicles	Fixtures & Fittings	Total
	£	£	£	£
Cost				
As at 1 April 2024	289,736	32,300	169,433	491,469
Additions	20,463	23,499	4,931	48,893
As at 31 March 2025	<u>310,199</u>	<u>55,799</u>	<u>174,364</u>	<u>540,362</u>
Depreciation				
As at 1 April 2024	51,776	22,080	83,140	156,996
Provided during the period	31,020	8,430	18,245	57,695
As at 31 March 2025	<u>82,796</u>	<u>30,510</u>	<u>101,385</u>	<u>214,691</u>
Net Book Value				
As at 31 March 2025	<u>227,403</u>	<u>25,289</u>	<u>72,979</u>	<u>325,671</u>
As at 1 April 2024	<u>237,960</u>	<u>10,220</u>	<u>86,293</u>	<u>334,473</u>

12. Debtors

	2025	2024
	£	£
Due within one year		
Trade debtors	77,399	32,533
Prepayments and accrued income	8,016	3,864
Other debtors	-	262
	<u>85,415</u>	<u>36,659</u>

13. Creditors: Amounts Falling Due Within One Year

	2025	2024
	£	£
Net obligations under finance lease and hire purchase contracts	8,272	11,365
Trade creditors	24,222	24,164
Other creditors	3,158	2,657
Taxation and social security	17,015	42,697
	<u>52,667</u>	<u>80,883</u>

One Vision Media
Notes to the Financial Statements (continued)
For The Year Ended 31 March 2025

14. Creditors: Amounts Falling Due After More Than One Year

	2025	2024
	£	£
Net obligations under finance lease and hire purchase contracts	17,790	27,109

15. Obligations Under Finance Leases and Hire Purchase

	2025	2024
	£	£
The future minimum finance lease payments are as follows:		
Not later than one year	8,272	11,365
Later than one year and not later than five years	17,790	27,109
	<u>26,062</u>	<u>38,474</u>
	<u>26,062</u>	<u>38,474</u>

16. Pension Commitments

The charitable company operates a defined contribution pension scheme. The assets of the scheme are held separately from those of the charitable company in an independently administered fund.

During the year the charge to the statement of financial activities in respect of defined contribution schemes was £45,260 (2024: £22,384).

At the balance sheet date contributions of £NIL were due to the fund and are included in creditors.

17. Movement in Funds

	As at 1 April 2024	Income	Expenditure	As at 31 March 2025
	£	£	£	£
Unrestricted funds				
General:				
General unrestricted fund	350,183	1,372,907	(1,339,911)	383,179
Restricted funds				
Restricted fund	526	5,390	(4,514)	1,402
Total funds	<u>350,709</u>	<u>1,378,297</u>	<u>(1,344,425)</u>	<u>384,581</u>

	As at 1 April 2023	Income	Expenditure	As at 31 March 2024
	£	£	£	£
Unrestricted funds				
General:				
General unrestricted fund	201,181	1,355,244	(1,206,242)	350,183

...CONTINUED

One Vision Media
Notes to the Financial Statements (continued)
For The Year Ended 31 March 2025

Restricted funds

Restricted fund	(118)	4,570	(3,926)	526
Total funds	<u>201,063</u>	<u>1,359,814</u>	<u>(1,210,168)</u>	<u>350,709</u>

18. Transactions with Trustees

During the year the expenses reimbursed to the trustees or paid directly to third parties were as follows:

2025	2024
£	£
<u> </u>	<u> </u>

19. Related Party Disclosures

20. Company limited by guarantee

The company is limited by guarantee and has no share capital.

Every member of the company undertakes to contribute to the assets of the company, in the event of a winding up, such an amount as may be required not exceeding £1.

21. FRC's Ethical Standard - Provision Available for Small Entities

In common with other businesses of our size and nature we use our auditors to prepare and submit returns to the tax authorities and assist with the preparation of the financial statements.

One Vision Media
Detailed Statement of Financial Activities (including Income and Expenditure Account)
For The Year Ended 31 March 2025

	2025	2024
	Total funds	Total funds
	£	£
INCOME AND ENDOWMENTS FROM:		
Donations and legacies		
Donations and gifts	6,099	4,372
Fundraising	5,055	2,983
Grants	500	500
	<u>11,654</u>	<u>7,855</u>
Charitable Activities:		
Charitable Activities		
Ribby Hall	5,390	4,360
Wigan MBC	-	210
	<u>5,390</u>	<u>4,570</u>
Other trading activities		
Student fees	1,361,253	1,347,179
Room hire and transport	-	210
	<u>1,361,253</u>	<u>1,347,389</u>
	<u>1,378,297</u>	<u>1,359,814</u>
EXPENDITURE ON:		
Charitable Activities:		
Charitable Activities		
Wages and salaries	(879,863)	(791,025)
Employers NI	(69,487)	(59,758)
Employers pensions - defined contributions scheme	(45,260)	(22,384)
Agency cleaners	(30,127)	(18,632)
Freelance workers	(13,356)	(10,785)
Rent	(12,630)	(10,711)
Rates & waste	(22,957)	(23,433)
Light and heat	(38,955)	(41,795)
Security costs	(2,059)	(6,137)
Hire and leasing of IT & CCTV equipment	(24,248)	(27,105)
Vehicle running costs	(9,976)	(5,920)
Computer software costs	(2,340)	(2,429)
Repairs, renewals and maintenance	(20,766)	(15,618)
Insurance	(24,899)	(15,555)
Printing, postage and stationery	(7,695)	(6,431)
Training, software and IT	(7,899)	(6,152)
Other professional fees	(4,579)	(3,176)
Payroll charges	(1,850)	(1,850)

...CONTINUED

One Vision Media
Detailed Statement of Financial Activities (including Income and Expenditure Account) (continued)
For The Year Ended 31 March 2025

Direct resources, activities and materials costs	(32,844)	(67,424)
General running costs	(11,498)	(9,114)
Ribby Hall costs	(4,514)	(3,711)
Sundry type C	(8,460)	-
Depreciation of motor vehicles	(8,430)	-
Depreciation of fixtures and fittings	(18,245)	(53,954)
Depreciation of leasehold land and property	(31,020)	-
Bank interest payable	(6,308)	(3,019)
Audit fees	(1,080)	(1,080)
Accountancy fees	(3,080)	(2,970)
	<u>(1,344,425)</u>	<u>(1,210,168)</u>
	<u>(1,344,425)</u>	<u>(1,210,168)</u>
NET INCOME	<u>33,872</u>	<u>149,646</u>