



---

## *One Vision Media Studios.*

---

Charity Incorporated Organisation  
Hope Enterprise Centre Scot Lane, Wigan WN5 0PN  
Tel No: 01942 211000  
[www.onevisionmedia.org](http://www.onevisionmedia.org)  
[team@onevisionmedia.uk.com](mailto:team@onevisionmedia.uk.com)  
Chief Executive Officer – Kevin Rosental.  
Assistant Manager – Natalie Hamilton

## **Charity Commissions' Annual Report**

**Completed by: Kevin Rosental.**

**Date: 16.01.2022**

## **SUMMARY OF One Vision and ACTIVITIES**

One Vision Media CIO, a Charitable Incorporated Organisation, established in March 2015. Originally, One Vision began as a not-for-profit Organisation started by a free speech group of people with disabilities in October 1998. The original group would meet one day per week to discuss ways in which they could voice their opinions and concerns about the services that they would make contact with on a regular basis. Choosing film as the medium gave everyone the opportunity to have and learn new skills whilst creating powerful messages to share with a wider audience.

With money from Wigan Adult Services, the group were able to secure rent for a room in a building in Wigan before moving to Hope Enterprise Centre the following year.

What started with just a handful of students and two staff members One Vision has now developed into a thriving Organisation. **One Vision is proud to welcome in over 75 members across the week. The number in attendance still vary a little, each week, due to COVID 19 / isolating as we follow Public Health England guidelines for social care settings. We now have an amazing staff team of 27 and sometimes need to hire Bank Staff.** Each person is dedicated to delivering an excellent activity program and providing the best quality of care for everyone. We also have other attendees (Around 50 plus students and staff) that visit from various schools and colleges during each week.

From renting just one unit for one day per week, the project has grown and grown. With successful applications to Awards for All and the Big Lottery Fund, the project was able to employ staff, buy new camera equipment and rent additional units. A second successful bid the Big Lottery Fund was obtained in 2008 giving One Vision an additional 5 years funding.

One Vision Studios is a non-profit group that provides training courses for people with learning disabilities in all aspects of media production. The group was established in October 1998 through a free speech group. One Vision Studios provides practical training courses for people with a learning disability.

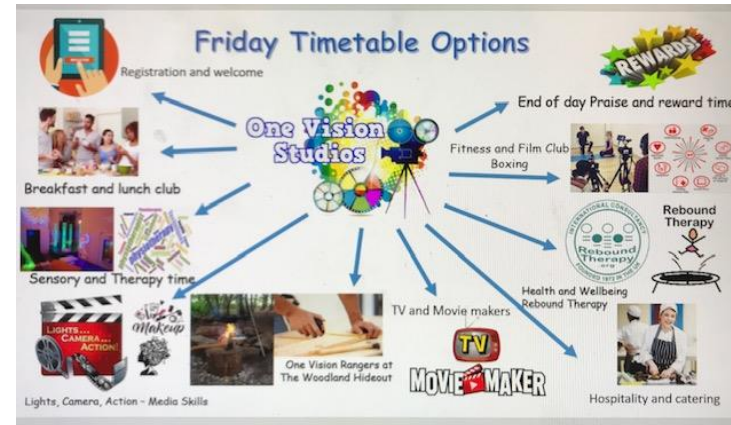
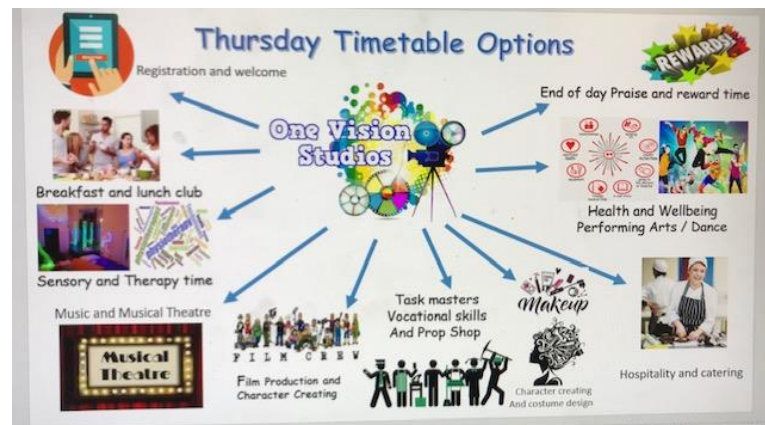
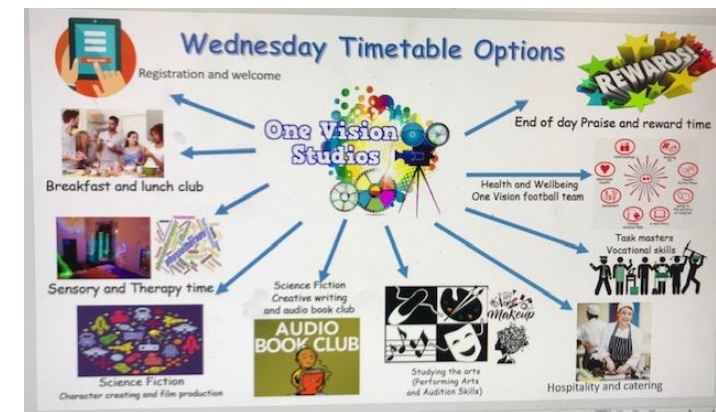
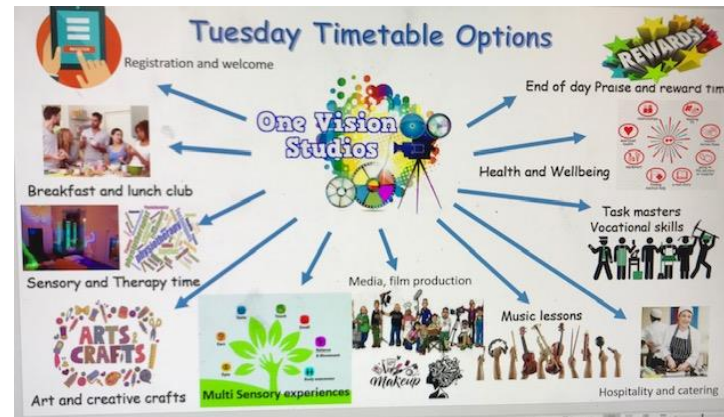
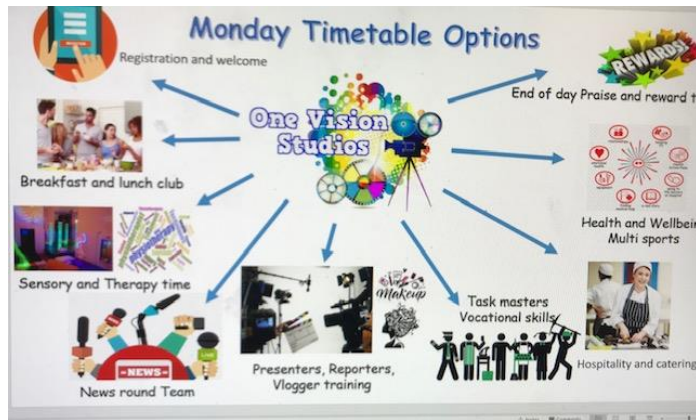
It was during this time that we began to redevelop the activities program to cover more areas of learning and began to develop links with other groups and organisations.

You will be amazed at what goes on at One Vision Media. Look at the following information below.

Here at One Vision Studios, we provide an alternative community based training and activities program in film and media education; taking a person centered, needs led approach to learning and support that will enable individuals to make informed choices about themselves and their education.

The education and training program at One Vision has been updated we still study: Media & filming production, Expressive and performing Arts, Gardening & Construction, Character Creation, Health & Wellbeing, Skills for Independence and now, Vocation (Vocational Vision). Our activities incorporate aspects of film and media, allowing students the opportunity to gain a wide range of skills across a varied timetable.

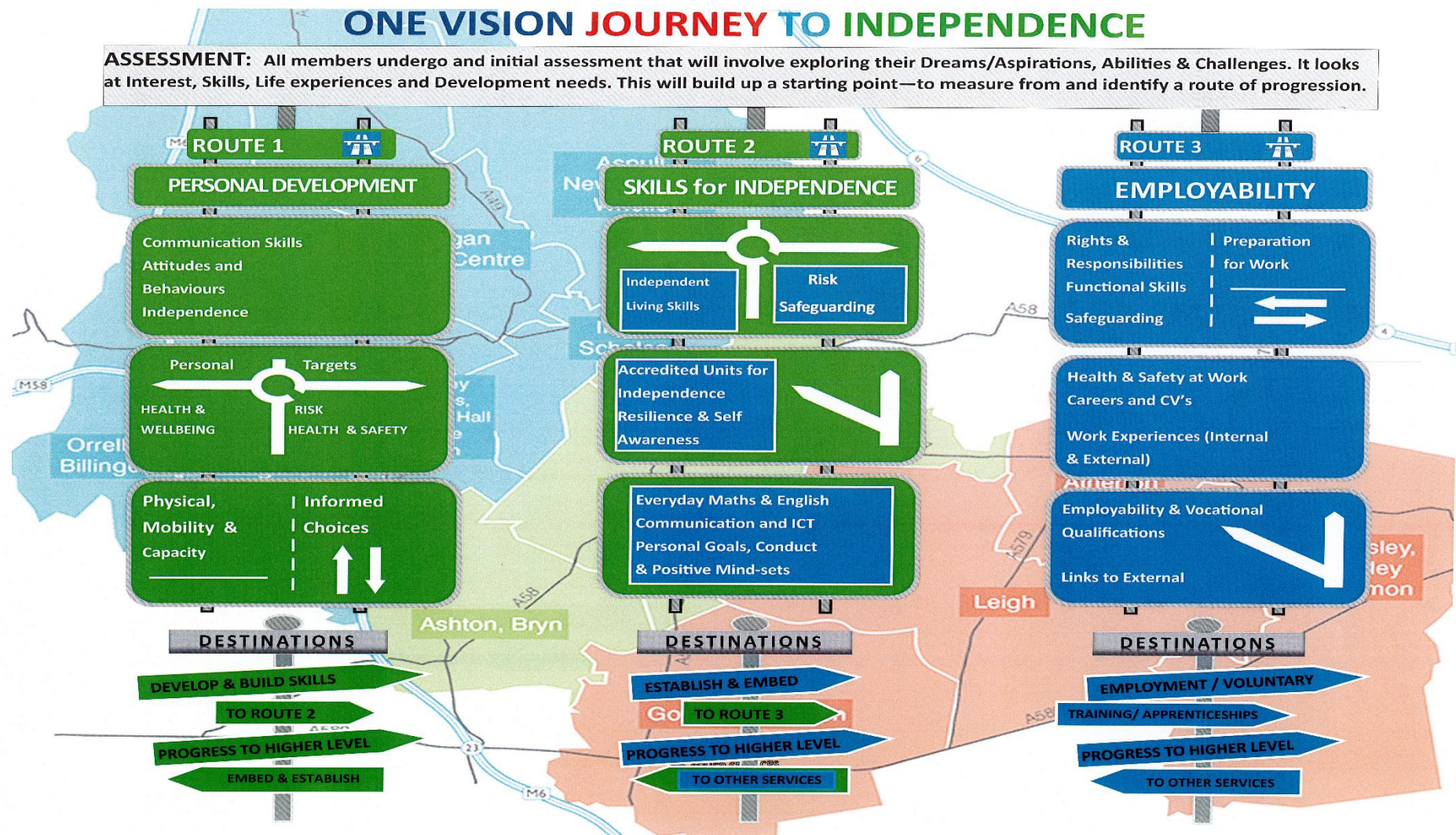
All our sessions incorporate the use of film, media and lots of fun.



We sought out work placements through our department 'Vocational Vision' for individuals whose dream is to gain employment in the future (voluntary or paid).



We in our second year of our 'Vocational Vision' venture. This has been added to our offer to ensure that our members start their experiences at One Vision and / or Vocational Vision and travel on an individualised journey. These are 'Routes' (see below)



(Examples)

Due to COVID – 19 things have had to change but normally we would:

- We have regular social link, sessions, activities, meetings and events linked with our community, local services, schools, colleges and organisations.
- We deliver a varied timetable (see above) hosting a range of healthy life style activities, educational, vocational training, independent living skills and promoting independence.
- We have started a music project working with a company called The Music Project; this enables our members to have an introduction to music and enjoy various music genres, instruments etc. They will learn how to explore or play instruments, sing or compose a song/music. .
- We are linking with The Canal and River Trust. We are restoring the canal sides as well as learning all about the canal wild life, caring for the countryside and for our local environment, health and safety near water, keeping the canals clean, tidy, and safe etc. We are also enjoying activity sessions where we learn how to sail. We are also providing construction workshop for our members, other schools and local groups that link with the 'The Desmond Family Canoe Trail' and The Princes Trust Ground work Team. One of the projects was to create a, canal side, community garden and to keep up the maintenance of this recreational area. From this Princes Trust link, we have joined forces with the Groundwork project providing work experiences for job seekers and providing community challenge projects for young volunteers. During the pandemic, we have had to have some time away and had to focus on maintaining and developing outdoor areas on site. Whilst doing this we have linked with the Canal and River Trust to gain certificate from The John Muir Award. Our members have loved learning about John Muir and the great outdoors as well as gaining new skills along the way.
- We provide educational and vocational experiences for our members, local organisations, local colleges, and schools. These linked schools and Colleges are from the Wigan areas, West Lancashire and Preston areas.
- We work with ASDA superstore and the CO OP, in Wigan, on various activities so that we can learn independent living skills and highlight our community awareness. We also enter their competitions and join in with their fundraising challenges when possible. This promotes our members Citizenship skills and supports British values. We also support Charities: Macmillan, Alzheimer's Society, Children in Need and Save the Children and others.

- Our wonderful dance studio has been a great success for us and beneficial for local groups to hire; Kick boxing/ box fitness group, dance companies and a cheerleading group as they rent this space when needed. It is also rented out for local council and group meetings too. (During the pandemic these links was effected but will hopefully pick up).
- Over the pandemic, we have had to change some of our rooms from sensory room, therapy rooms, tuck shops etc. to provide dining kitchen spaces in each zone/bubble to ensure safety for all during the COVID pandemic (We are planning to set these rooms back up as the pandemic restrictions life).
- During the past years, we rented rooms out to three other business' at reasonable rates so they could get a good start to their business'. Unfortunately, these businesses have closed due to lock down. These rooms were used for our New Venture 'Vocational Vision'. We have now put plans in place to Plan and refurbish this section of the building.
- Two years ago we obtained another building and all of its grounds that is attached to One Vision that has sixteen rooms. Due to the pandemic, we realised that we need larger spaces to function safely so we started a refurbishment project on this building. This refurbishment has been made possible by kind a hearted company 'The Cloth Workers' as well as our own funds (This is reflected in this year's accounts). The dining space contains a pool, Coffee and drinks bar and a training Kitchen. These rooms are almost completed. We have other rooms still to complete but it is all looking grand and is developing into an amazing learning environment as well as a social environment.
- We have an outreach team and service that perform shows to other services / charities when possible.

During Covid, some of the rooms in this area had to be changed into dining spaces etc. so that we could remain open throughout the pandemic. It is important now that some restrictions have been lifted to work hard to re-establish the workspaces. To do this we have re design the layout and or the location of some workspaces. The reason for this is... If this pandemic or something alike should happen again, would we be ready and safe to stay open? Are we all able to social distance in this workspace? Can we easily clean and sanitise the workspace? Is this workspace still of interest to our members? Do we need a new workspace, because of what we have learned from the pandemic? This refurbishment has already started. We have split the building up into departments and are addressing each department in turn.



## We would like to:

**Plans - we would like to. (Some of these plans have been held back a little due to the pandemic. This has been due to getting reliable trades to carry out work at this unprecedented time.**

**Studios' 5** We are still in the process of creating a new venture 'Vocational Vision' This is where we will be promoting employability skills with our members and with people from the Wigan area. There will be an employability-training centre in this area along with the following businesses; these will run as standalone businesses. These businesses will create real jobs for local people of the community. They will provide work experience placements for the members of One Vision, local schools as well as local job seekers etc. These work placements will promote employability skills, build confidence, give the person the feeling of self-worth etc. It will also give the local people a place to gravitate to for socialising, which will combat loneliness.

- **Café** – This will be open throughout the week and possibly match days too when our local team, Wigan Athletic or the Wigan warriors, play their home games. If we were lucky, enough to link up with a food bank we would provide local families with free or low cost meals, especially during the school holidays. At the moment we have set up a Tuck Shop where this café will be so the members will develop skills to follow procedures, instruction etc.
- **Shop** – This will sell products, produced by our members and local people that are setting up their own enterprises. Stock will also be purchased from local businesses/wholesalers.
- **Print studio** – This business will supply the shop with goods. (Tee shirts, cups, bags, canvases and many more items). Orders from outside customers will be a future vision.
- **Floristry/ plant stall** – This is set up in a different department to create and make the stock but the stock is then sold in the shop and on the stall. The members feel that they are in a real work setting creating seasonal floral tributes and displays. They also learn about seasonal gardening and horticulture skills
- **Toilet facilities** – New facilities. These services are in need of an update so that they are accessible for all.
- **Claytons Garage** – (In memory of our beloved member who sadly passed away in September 2019). We have purchased the garage (Jan 2021). **This has been set up but unfortunately, the strong winds demolished it. We are still hoping to fund raise for a better, more robust garage.** This garage offered car washing and valeting service. We also teach our members to carry out basic car maintenance too. We link with Wigan College as part of

this experience. We teach cycle maintenance as we have our own Tricycles for our members. (We have purchased two Trikes and had three more donated) At the moment we teach maintenance for these bikes using our construction room.

- **Music and sound recording studio.** Music and singing lessons are available. We will record music and audio for our films and will hire it out to local bands etc.
- **Character creating studios** – are rooms that consist of costumes and props store as well as **a fully operating hairdressers and beauty salon.** We have this salon on a very small scale. Due to the interest and benefits that this salon brings and the Covid safety guidelines, we now need a larger salon. This salon is to be relocated to another room in this same studio area. The Salon will provide experiences of working in creating characters for our filming projects. We hope that this will operate on some days as a standalone business where our members can gain work placements or enjoy being a customer. It will also provide wellbeing days for people in our local community.

### **Successes for studio 5 - we have already achieved:**

- **Launderette** – To clean our costumes, uniforms etc. It will also provide a service for local teams and hairdressers to have their kits, gowns and towels cleaned by the launderette staff and our members. This is going really well and the members are extremely proud of themselves.
- In temporary measure now, we have set up an Art Room, a shop store and a break time area. The refurb plan for this area is planned for the coming year.

### **Plans - we would like to.**

**Vocational Studios 3 & 4:** These rooms are for One Vision members but we will be happy to hire them out when needed.

- **Toilet facilities** – New facilities. These services are in need of an update so that they are accessible for all. The local college students are helping us to address these areas as their college projects.
- **Outdoor track** – This is next to the Health and Wellbeing department. This is for members to learn road awareness, use as a walking/running track, a bike lane for our tricycles

- **Sensory / Therapy room** – This is so that we can promote Health and wellbeing for all. One Vision members will use it but we can hire this out to local schools/colleges/Groups in the local community.

### Successes for studio 3 & 4 - we have already achieved:

- **Construction** - products made to be sold on in our shop and to create and recycle furniture, make props for performing arts and films, seasonal items that we sell on local pop up markets. We also produce planters and requested items for The Desmond Family Canoe Trail, Canal and river Trust, Hedgehog sanctuary and other services.
- **Needlework studio (Unique Sewing)** – One Vision, community groups and other organisations, will book out this room when desired. We will be encouraging the community to be involved in sewing clubs, Knit and Natter groups etc. when the pandemic is over. The members of One Vision are enjoying this studio. They are making costumes for our plays etc. and stock for our seasonal sales. We also make quilts for The Linus Project UK.
- **Art and Craft studio** – This is a great space, the members study various artists to gain inspiration. They can then create artwork and various stock for seasonal sales and for their own creative development. This area also has its own outdoor teachings area.

Things that are created in the art studio, Floristry studio, Construction workshop will be sold on from our mobile market stall and in the future in our shop.

- **Cinema** – Jeff Barton of Gf Holding recognised this dream. In collaboration with other businesses, they planned, built and donated this cinema. Sharing the cost of £130,000. We have had the official opening (on a quieter scale than we would of liked, due to the pandemic. When safe to do so this will be used for the community, local day care services, residential care homes, schools etc. to enjoy a social day. They will use it without having the added pressures that can occur when companies are low on staffing, people suffering from dementia and similar life changing needs. It is also something that we need as a learning tool and a classroom for our students as well as it being a stepping-stone for some of our students who are learning how to cope with new environments. Our cinema is similar to our local cinema so that we can de sensitise our students so that they can eventually enjoy a trip to the local cinema with family and friends. Some local schools have used the cinema and the feedback is wonderful.



- **Health and Wellbeing** – We are proud of our Health Gym and Therapy space. The members are improving their own health and abilities. We have a session room that is attached so that the members can be educated on the importance of staying healthy in body and mind.
- **The Zen Zone** – This room is proving to be a good resource for getting members back on track with their mindfulness/behaviours, ready to take on their day.
- **Costume room and props room** – We use this room promoting vocational skill and independent living skills; we need this room to be re-designed. We would like it to look like a shop where everything will be displayed in relevant areas. Job roles and routines will be put in place.

### Plans - we would like to.

**Performance Studios' 2:** These rooms are for our One Vision members but we will be happy to hire them out when it is safe to do so, once all pandemic restrictions are lifted.

- **Toilet facilities** – New facilities. These services are in need of an update so that they are accessible for all.
- **Door/Entrance** – This door way is in desperate need of replacing. This will create a more inviting entrance to this studio area.
- **The dance studio to be transformed into a theatre.** This will benefit One Vision members and the local schools/colleges / community groups.

### Successes for studio 2 we have already achieved:

- **Learning and Resource Centre (LRC)** this is an IT suite. This is used for our staff, our members and local community.
- **A new editing cinema** – This is next door to the LRC where members can learn these editing skill, review their work and carryout critiques, evaluating their work until they see that it is good enough to be shown at our new cinema or our end of year presentation at our local cinema.

- **Dance studio** – This is used for teaching any of the Arts subjects. We are hoping to open this studio in the evenings or on Saturday where we will be delivering various dance classes. We just still need to add a ballet bar and some large mirrors. This room's plans for the future is to incorporate this room with in the theatre space.
- **Green Screen Studios and Editing Suites** – we have one Green screen studio and now that needs updating. This studio is used for film production, TV production and photography projects. This is also hired out when requested. We have noticed that some editing/computers needing fixing in place so they cannot be moved so we need to create a framing idea so that they will be protected.
- **Electrical stores** – This is beneficial to all departments. Most members and all staff know where to book out iPads, cameras, Lighting, extensions etc. These equipment's are monitored, checked and care for in a more efficient way.

## Plans - we would like to.

### Leisure and Recreation Studios' 1:

**Volunteer group** – This group will be welcomed in to One Vision. We will have planned jobs prepared for this group so that they feel valued. They will also be jobs that will help the development and progress of One Vision. The volunteers will all dine together as a thank you for their kindness. In school holidays, we would encourage families too.

**Holiday / Respite homes** – **We have been renting our first One Vision house (Next door to our site) The house and gardens are being renovated so that there are no barriers; it will suit everyone's needs.** This home will be set out just like a home. This house will give our members various skills for independence, job roles of work experience as well as creating jobs for local schools/community groups etc. This experience will be open for anyone who is in need of respite / holiday break. You will be able to book your stay through One Vision's Travel agency. Now we have builders working on the house to make it accessible for all.

## **Successes for studio 1 Leisure and Recreation:**

**We have already achieved...**

- **Library /reading space (this space is completed)** This is due to open on 07/02/22.
- **A Training Kitchen – (It looks amazing)** this venture will be linked to our 'Task Master' projects. It will give learners the knowledge and understanding of working in a kitchen and hopefully some will progress into the catering kitchen. Our Members and staff will cater for smaller groups of One Vision members and staff on a daily basis. They will provide foods and drinks for breaks and lunchtime. The Task Masters will grow products, on our grounds, to use in this venture. People / families / groups: who volunteer at One Vision, for the day, will dine with us in a 'Come Dine with Me' project. This will be a wonderful experience for all involved. This is due to open on 07/02/22.

We have given the outside building a facelift refurbishment, with new windows, wall panelling/fascia boards, guttering etc.

We have created an amazing social building for all our members and staff to dine in style.

Most interior walls and the layout of the building has been re planned.

- **Reception**
- **Personal care suites, this has been cleaned up and had a face lift but the local shop Top for Tiles would like to re tile this suite as a gift.**
- **Toilets – has been cleaned up/painted**
- **Dining areas.**
- **Drinks and coffee bar**
- **Snooker Zone.**
- **Hospitality and catering Kitchen** - This venture will be linked to our 'Task Master' projects. Our Members and staff will cater for all One Vision members and staff on a daily basis. They will provide foods and drinks for breaks and lunchtime. This will also be a standalone business creating jobs and work experiences too. The Task Masters will grow products, on our grounds, to use in this venture. People / families / groups: who volunteer at One Vision, for the day, will dine with us in a 'Come Dine with Me' project. This will be a wonderful experience for all involved.
- **First aid room**

- **Staff room and staff kitchen**

## **Plans – we would like to.**

### **OUT DOOR ACTIVITIES:**

**Crafts, Groundwork and Maintenance team** – this job will cover some of the projects planned for One Vision's TASK MASTERS, volunteer groups' and work placement volunteers.

Examples of jobs will be: Creating craft and garden items for the shop and our grounds / Creating and decorating rooms / Gardening / Maintaining the sensory Garden / Tending to the allotment / working in the café, shop or workshops and there are many more opportunities to get involved.

### **Health and wellbeing projects:**

At One Vision, we are promoting the great outdoors. We have noticed that more of our members do not get out much when they are at home; some have prescribed Vitamin D tablets. From this, we plan to create various outdoor spaces:

- A sensory garden.
- The Enchanted Wood.
- A performance area.
- A Story / reading space.
- Music space.
- Allotment.
- Outdoor classroom.
- Multi Use Games Area (MUGA Pitch).
- Cycle lanes / running track (This will promote independent travel skills, as members will learn how to drive a mobility scooter / power chair.
- Car parking bays

- A potting shed out door classroom 'Granville's Shed'. This was planned to be a bird house but due to Bird Flu in our area, we made a decision to change our plan for this beautiful space. This is now a beautiful potting shed called 'Granville's Shed' and is also an outdoor learning/ leisure area. The local college is working on this project change and should be completed in 2023.

### **Successes for Outdoor activities:**

**We are still linking with the local College** (Wigan and Leigh College) we have once again delivered a presentation of what we need to do to create a wonderful place. The college are using this opportunity to deliver their course work as well as help us, thus giving their students real work opportunities and experiences from the planning of a job right through to the end. Their visits have not been regular due to the pandemic restrictions but they are keen to develop this collaboration from strength to Strength.

- We have been continuing to clear other areas that was extremely untidy or had not been tended for a while.

### **Other Successes**

#### **Staff have gained additional qualifications**

**Louise Carter** gained an award from Wigan Council for her outstanding work and passion in promoting Health and Wellbeing to people who have various disabilities. We are extremely proud of Louise as there were many nominees. We were invited to a wonderful awards evening and dinner. Louise appeared on social media and the local news with her certificate and prestige trophy.

- Since the pandemic, we are supporting 75 plus members and others from various schools, colleges and local groups.
- We have been developing even stronger links with other schools, colleges, various organisations and community links; this is ongoing and hoping to build new links. .
- We have provided placements for students from mainstream schools and special schools, The Princes Trust - Ground Work Team, The Live Well Team, Local schools and Colleges, The Leaving Care Team to be educated in our setting focusing on employability skills. This link helps the students and job seekers to develop and make

progress to the best of their ability in their life skills, independent living skills, academic skills, social skills and vocational skills.

## **Projects/Activities**

- All our members and staff have all adapted really well over the pandemic. We are extremely proud of everyone as they have been brave and positive, when coping and adapting to the changes as we are coming out of the pandemic restrictions. We are now easing ourselves back into One Vision way of life that was pre-Covid or better than re Covid. This means our members can travel to various specialist rooms/studios throughout their day and see more of their friends too.
- We have set up seasonal planning table, with approximately 12-week blocks. All members are encouraged to make their own choices to choose which sessions that they want to take part in, for the course of 12 weeks. There are usually seven plus session choices per day. Please see the above timetables...
- We also have a football team that enter the annual Lancashire FA tournaments.
- We are in the planning of our annual film. The films are shown at our local Empire cinema. We may have to consider a DVD release this year or a Live Stream of it on social media.
- We are working towards a small show/s once again and a show on a bigger scale if we can find a theatre that suits our performers' disabilities and of their needs.
- We are promoting Independent Living Skills. We are doing this through a hospitality and catering project 'Come dine with me'. This will encourage healthy life styles and independent choice / skills. Landgate School and college love to link up with us for this.



## **Chairpersons' Report**

**By Naomi Hamilton:**

One Visions team continues to make great progress; they are going from strength to strength. I am extremely proud to be part of their team as chairperson.

One Vision took over the Hope Enterprise buildings in July 2017 and since the pandemic, the businesses that used to rent spaces off One Vision have decided to work from their home settings. Due to this One Vision as always think on their feet. They have moved into these workspaces bringing vocational opportunities to their members.

Kevin Rosental, The Chief Executive Officer and Natalie Hamilton the Assistant Manager, continue to have an unbelievable passion to take One Vision on this amazing journey. They guide and train staff so that their members receive the best care and ensure personal progress for all. Working together with the Company Bursar, Jude Baker and the Quality Assurance Officer, Wendy Yates, they strive to develop the business. This is recognised by the local council in the form of recognition on 'The Ethical Framework'. The Council have standards that you have meet in order to achieve this recognition. There are only 11 companies on this framework, who are in LOT 7 – Social Settings.

The amazing staff make the learning and care fun whilst promoting individualised targets and learning for all, with focus on each member's personal progress in Health and Wellbeing, Life Skills, Independent living skills, education or vocational skills. All of these are important but I do like the fact that they focus on each person's dreams and wishes too. I would like to take this opportunity to thank the team for their hard work, positivity and enthusiasm they bring to each day, constantly striving to be diverse in their planning and delivery of their sessions knocking down any barriers that stand in the way. Thus ensuring all members make progress to reach their individual goals, wishes dreams and aspirations. The same ethos is shared with the staff also. Staff are encouraged to develop their skills in various training opportunities as well as creating their individual career ladder so that they reach their own dreams and beyond.

I must still reflect on the way that One Vision has handled the pandemic.

The staff have been inspirational, truly selfless. They continue to put the members before themselves, going out of their way to ensure normality for each day. Staff continue to work with a big smile their voices and spirits remain passionate and jolly.

The feedback that I hear from Families, visitors to One Vision and the comments that I read on facebook are always positive. They all seem to be overwhelmed with the love, fun, laughter and positivity that radiates throughout this wonderful place. I feel proud to be a Trustee for One Vision. I can honestly say that the support that our members and families have received during the pandemic and will continue to receive is always extremely important and beneficial to all people who attend and who are linked. It is like having an extended family.

I would like to thank the companies that support One Vision Media throughout the year. These companies help make One Vision an incredible place.

Milliken Flooring for painting more of the corridor walls at One Vision and for donating extra carpet/tiles so that we could carpet additional rooms extra too.

**We very grateful for the support from our educational links that use our service:**

**List of Services, Clubs & Societies**

- Hope school and College, Wigan.
- West Lancashire Community High School.
- Applebee Wood Primary School.
- Wigan Councils Community Unity Project (Work Placement courses)
- Moor Hey School Preston.
- The Music Project Wigan.
- Deanery high school. Wigan.
- St John Rigby College. Orrell.
- James Rosental's Dance Company & Co.

- Wigan Council Volunteer/Community group.
- Wigan Council social services.
- Landgate school and College, Wigan
- Oakfield School and College, Hindley, Wigan.
- Wigan and Leigh College, Wigan Campus.
- St Helens College
- The Princes Trust Scheme, Groundwork team.
- The Live well team, Wigan.
- Leaving Care Group
- St Jude's Primary School at Worsely Mesnes.

From the last report, the management have decided to develop space so that recreational time and wellbeing will be organised in promoting social skills for all as well as vocational skills for some, this is in and surrounding grounds of our Studio 1 building.

The plans for the outside spaces are very exciting and I honestly cannot wait to see all the members' faces working in all of these areas when the work is completed. This work is still ongoing but hopefully will be completed this coming year.

**Organisational Chart (Insert here who makes up your organisation – names, roles, responsibilities (e.g. treasurer secretary etc.))**

<b>Roles:</b>	<b>Responsibilities:</b>	<b>Names:</b>
<b>Chair Person of Trustees</b>	To organise and lead the Trustee meetings. To support the service of One Vision.	<b>Naiomi Hamilton (ASDA)</b>
<b>Trustee</b>	To organise and lead the Trustee meetings. To support the service of One Vision.	<b>Sharon Jeffers Self-employed, Cleaning business)</b>
<b>Trustee</b>	To organise and lead the Trustee meetings. To support the service of One Vision.	<b>Sharon Knight (Hope School)</b>

<b>Trustee</b>	To organise and lead the Trustee meetings. To support the service of One Vision.	<b>Jenny Glynn (Swift Training Company)</b>
<b>Trustee</b>	To organise and lead the Trustee meetings. To support the service of One Vision.	<b>Martin Mahoney (St John Rigby College)</b>
<b>Trustee</b>	To organise and lead the Trustee meetings. To support the service of One Vision.	<b>Sandra Gough (Oak field SEN School)</b>
<b>Chef Executive Officer</b>	As CEO of One Vision Studios working closely with the board of trustees, I am responsible for managing, creating, planning and implementing the strategic direction vision and growth of the organisation. I am proud to say that along with the help of members of a free speech group back in 1998 I was one of the founders of the organisation. With the input from our amazing students and staff team, along the way we have been on an incredible journey and together have steered One Vision to what it is today. It is such a great organisation to work for and I just wouldn't want to be anywhere else, a dream come true	<b>Kevin Rosental</b>
<b>Assistant Manager / Teacher</b>	To assist in the management and promote the organisation. To promote the members progress / qualification as curriculum lead. <b>S</b> ession planning/ setting new targets. <b>M</b> onitoring and measuring members' progress. <b>A</b> ssessing members in various areas ensuring achievement. <b>R</b> eviewing sessions and members progress.	<b>Natalie Hamilton</b>

	<p>Tracking members' performance. Writing reviews. Attend meetings. Deliver and Teach sessions. Support other staff and members within sessions and assist with members personal care, medical needs, with independence and any other needs required.</p> <p>Natalie joined the team in February 2018 after 20 years teaching at Hope School and College. She brings with her a wealth of experience in supporting individuals with additional needs as well as managing behavioural strategies. She joined the senior management team at Hope in 2010 and was transition co-ordinator for the College leavers as well as promoting employability.</p>	
<b>Project Development Officer and Bursa</b>	<p>To carry out all required admin tasks Plan trips and events etc. To support and carry out all company finance</p>	<b>Jude Baker</b>
<b>Funding raising, curriculum and quality standards lead</b>	<p>To source funding To develop the quality standard To monitor and develop staff and students in training / qualifications.</p>	<b>Wendy Yates</b>
<b>Department Leads / Teachers</b>	<p>To assist the assistant manager to promote the members progress / qualification as assistant curriculum lead. To lead staff in various departments promoting high standards when delivering sessions to develop our members learning and development.</p> <p>Session planning/ setting new targets.</p>	<p><b>Lynne Harrison</b> <b>Louise Carter</b> <b>Joanna Sweet</b></p>

	<p><b>M</b>onitoring and measuring members' progress.</p> <p><b>A</b>ssessing members in various areas ensuring achievement.</p> <p><b>R</b>eviewing sessions and members progress.</p> <p><b>T</b>racking members' performance.</p> <p>Writing reviews.</p> <p>Attend meetings.</p> <p>Deliver and Teach sessions.</p> <p>Support other staff and members within sessions and assist with members personal care, medical needs, with independence and any other needs required.</p>	
<p><b>Teachers And Pre Teachers</b></p>	<p>To assist the assistant manager to promote the members progress / qualification as assistant curriculum lead.</p> <p><b>S</b>ession planning/ setting new targets.</p> <p><b>M</b>onitoring and measuring members' progress.</p> <p><b>A</b>ssessing members in various areas ensuring achievement.</p> <p><b>R</b>eviewing sessions and members progress.</p> <p><b>T</b>racking members' performance.</p> <p>Writing reviews.</p> <p>Attend meetings.</p> <p>Deliver and Teach sessions.</p> <p>Support other staff and members within sessions and assist with members personal care, medical needs, with</p>	<p><b>Danielle Banks</b>  <b>Megan Bibby</b>  <b>Angela Hendry</b>  <b>Carina Kenyon</b></p>



	independence and any other needs required.	
<b>Trainee teachers</b> <b>Session Leader – Level 3</b>	<p>To study qualified teachers (above) to complete their teaching role...</p> <p>To promote the members progress / qualification as assistant curriculum lead.</p> <p><b>S</b>ession planning/ setting new targets.</p> <p><b>M</b>onitoring and measuring members' progress.</p> <p><b>A</b>ssessing members in various areas ensuring achievement.</p> <p><b>R</b>eviewing sessions and members progress.</p> <p><b>T</b>racking members' performance.</p> <p>Writing reviews.</p> <p>Attend meetings.</p> <p>Deliver and Teach sessions.</p> <p>Support other staff and members within sessions and assist with members personal care, medical needs, with independence and any other needs required.</p>	<b>Emma Case (Apprentice level 3)</b> <b>Bethan Mason</b> <b>Katie Winnard</b>
<b>Session Worker – Level 2</b>	<p><b>S</b>ession planning.</p> <p><b>M</b>onitoring and measuring members' progress.</p> <p><b>A</b>ssessing members in various areas ensuring achievement.</p> <p><b>R</b>eviewing sessions and members progress.</p>	<b>Rita Carletti</b> <b>Jack Bamber</b> <b>Rachel Jones</b> <b>Joanne Taberner</b> <b>Kiara Bowles</b> <b>Nicola Gallagher</b>

	<p><b>T</b>tracking members' performance.          Deliver and Teach sessions.          Support other staff and members within sessions and assist with members personal care, medical needs, with independence and any other needs required.</p>	
<b>Session Support worker – Level 1</b>	<p><b>A</b>ssessing members in various areas ensuring achievement.  <b>R</b>eviewing sessions and members progress.          To support staff and members within sessions, personal care, medical needs with independence and any other needs required.  <b>C</b>arry out cleaning/Domestic duties.</p>	<b>Kath Mcloughlin</b>
<b>Apprentice 'Session support worker'.</b>	To support staff and members within sessions, personal care, medical needs with independence and any other needs required.	<b>Alex Baybutt (Apprentice)</b> <b>Stacey Rigby (Apprentice)</b> <b>Thomas Baxendale (Apprentice)</b>
<b>Apprentice Site care take and Session support worker.</b>	To look after the site and buildings whilst supporting staff and members within sessions, personal care, medical needs with independence and any other needs required.	<b>Barclay Hamilton</b>
<b>Apprentice Office Admin</b>	To work with the admin, vocation and management to carry out various tasks.	-
<b>College/Uni students on work placements linked to a qualification / Apprenticeship / T-Level / Degree etc.</b>	<b>T</b> o <b>support</b> staff and members within sessions - if applicable to their course or Qual... to support also with... personal care medical needs with independence and any other needs required.	<p>St John Rigby College x 6 students (Health &amp; Social care, level 3)</p> <p>Wigan &amp; Leigh College x 4 students (T – Levels)</p> <p>Wigan &amp; Leigh College x 2 students (Health &amp; Social Care, level 2 &amp; 3)</p>

		<p>Wigan &amp; Leigh College x 1 students (Teacher)</p> <p>St Helens College x 1 student (Health &amp; Social Care, level 3) x1</p>
<b>Volunteer (or covering bank staff when needed for Session Support worker – Level 1)</b>	Support in various job roles as a Session Support worker – Level 1	<b>Holly Johnson</b> <b>Tamsin Taylor</b>
<b>Volunteer/s</b>	Support in various job roles as a Session Support workers on college placements etc.	N/A Due to pandemic restrictions

## **Building Management – Kevin Rosental.**

- **Please look at our Plans for the future under the heading ‘Plans - We would like to’. These are the plans that management will be project managing over the next year onwards.**
- As we are a service for people with severe disabilities, we are creating new pathways and easy access ramps so that independence in traveling around the site is safer and achievable.
- We have created a beautiful social and dining area.
- We have updated risk assessments for all rooms and areas, created systems etc. to cover all healthy and safety aspects since the COVID – 19 Pandemic changes/updates.
- The grounds are continually being cleared, tended to and developed to create outdoor spaces. We have linked up with Wigan & Leigh College Horticulture / Groundwork / Hard landscaping and Joinery courses to work on the grounds. Together we can make our dream a reality.
- We are renting the house next door and a refurb project is underway to make it accessible for all. This will help this space work better for our members, to promote independent living skills etc.

## **Concerns**

Our concerns for the future are mainly the upkeep of the building as it is an old building and needs repairs and refurbishments. The focus is to update the toilets so that they are accessible for all and our members can be as independent as possible. Some of the ceilings are leaking in a couple of units and the doorframes and windows need addressing. We still hope that the local college (Construction department) will support us with this problem after the pandemic.

The toilets will need specialist contractors as the floors in some areas hold asbestos.

## **Users Comments: One-Vision Members.**

“It’s a very special place full of so much love, fun and laughter”. Sandra Lawton.

“You are absolutely amazing, well done everyone; you are all so kind and thoughtful”. Sandra Gough.

“Fantastic, You all work so Hard.” Carol Huber.

“Natalie and Kevin, What an amazing duo you are!! Lots of hard work pays off and your One Vision family will absolutely love the opportunities that the cinema will bring them.” Samantha Swan (Teacher at Bryn, St Peters Primary)

“Well done to all involved, you should be so proud of yourself.” Joan Grundy

“Fantastic place with fantastic people who go out of their way to make sure all members are looked after and most of all have fun making life worthwhile, thank you to everyone who looks after my daughter, she is so happy.” Diane Brown.

“Carry on with all the amazing work you do. So proud and grateful that my grandson has the privilege of being part of your team.” Kath Lisle.

“Every day I wake up and feel so proud to be part of the One Vision team. Our members and staff are amazing and there’s no place I’d rather be.” Stacy Rigby (One Vision Staff)

Just wanted to let you know how much my daughter is enjoying herself at One Vision. She really loves coming. She had a fab time trampolining. It is great that she is taking part in so many activities. She is living the dream! Thanks – Cathy, parent.

Members at One Vision are the core element of the organisation; everyone is unique, with their own personality, character, fears and dreams. Many often have hidden assets and strengths that help them to cope with the challenges that life has set them - strengths that can easily be overlooked or unrecognised. Genuinely, trying to view the world through the eyes of the member, gives great insight into the behaviours, difficulties, emotions, anxieties and the daily struggles that they are faced with. Before we can fully understand the issues faced and feelings of another person, perhaps we must first see the world as he or she does – then we can really start to have an impact/make a difference'. This methodology, which identifies true understanding, creates real empathy and nurtures creative and innovative ways of working, which generates positive, reliable outcomes that have an impact on lives by focusing on what they can do and upskilling people to develop independence, confidence to have hope for the future and a pathway of choice and for all areas of their lives. 'Quote from a Social Worker'



I wrote this the other week whilst having a bit of reflection on my change of 'career' so to speak and putting together things for my review - Joanna Sweet, Head of Performing Arts



## **One Vision**

### **Being Happy**

This is a peaceful place,

I feel relaxed.

This is a happy place,

I feel wanted.

This is a fun place,

I feel excited.

This is a safe place,

I feel cared for.

This is an encouraging place,

I feel brave.

This is a creative place,

I feel interest.

### **Getting My Personality Back**

This is a reflective place,

I feel constant.

This is new opportunities place,

I feel a voyage of discovery.

This is a new chances place,

I feel if gives me hope.

This is a dreams place,

I feel I'm always looking forward.

This is a fascinating place,

I feel positive.

This is a new thoughts place,

I feel new dimensions of myself.

### **Progression of the New Soul**

This is a perceptive place,

I feel confident.

This is a Tomorrow Land,

I feel strong.

This is a moving place,

I feel like I'm not looking back.

This is a comfortable place,

I feel passionate.

This is an interactive place,

I feel together as one.

This is a powerful place,

I feel stronger...

***By Chris Parker – One Vision Member***

**26.01.22**

# **One Vision**

## **The reason behind**

This is an invigorating place,  
I feel a tide of energy.

This is a rich and positive place,  
I feel a rush of contentment and peace.

This is a friendly place,  
I feel connections.

This is a creative place,  
I feel cleverer.

This is an elaborative place,  
I feel myself bewildering.

## **Getting My Personality Explored**

This is an excellent and perspicacious place,  
I feel intelligent and exceptional.

This is an aspiring place,  
I feel my ambition fuels the enterprise of my dreams.

This is a good place for faculty,  
I feel my imagination, like a reflection.

This is a supportive place,  
I feel the assistance making me updated.

This is a comfortable place,  
I feel born ready.

This is a strong place,  
I feel everyone gathering together.

## **The Exploration of Self**

This an understanding place,  
I feel traversed.

This is a talented place,  
I feel validated.

This is a determined place,  
I feel hungry for my dreams.

This is an inspiring place,  
I feel transmitted.

This is a detailed place,  
I feel respected.

This is an independent place,  
I feel myself...

***By Ethan Kelly - One Vision Member***  
***26.01.22***

I feel very fortunate to be able to work in partnership with One Vision from a social care perspective. The staff team work tirelessly to ensure that their attendees have the best experience possible, are made to feel valuable and included members within their local communities, have ample opportunities made readily available to them and most importantly always have smiles on their faces. The staff here are the most committed and passionate group of people I have had the good fortune to work alongside in many years and it is evident that they have the best interests of their attendee's at the forefront of their minds at all times.

Quote from a Social Care Officer.

Staff comments - blue  
Members comments - green



*"I just think they are brilliant, and I love them!" – Social Care Officer Supervisor*

The Friends Bus was created during the Covid-19 pandemic for members who needed to self isolate, were unable to come to the center and were missing their friends

The bus visits each member's house to entertain and perform for them making lockdown life just that bit easier

INSERT COMMENTS/PHOTOS

FRIENDS



Following on from the wonderful success of the Friends Bus.....we are pleased to announce the Games Show Bus

*"I have been a social worker in Wigan for 11 years now – I think that One Vision is the best of the community enterprises and is the one I would recommend for anyone of my family or friends" – Social worker.*

## **Group Comments**

**Hope school and college:** This is a great place to be a part of. The students gain a range of experiences through their timetabled sessions every week. They are part of an annual show that builds confidence in both students and staff self-esteem. It is so good I would like to work here.

**Oak Field School and college:** We use One Vision for taster days and school/college links. We appreciate that One Vision always supports our students to develop their work experiences through regular work placements.

**Hawks cheer leading team:** The dance studio is ideal for us. It is a good dance space with a great floor. The site has good car parking space too. The staff are friendly and nothing is ever a problem.

**Desmond Family Canoe Trail / Canal and River Trust:** This is a fantastic place with great facilities. We do not have these facilities in the Hub 'our venue'. One Vision have kindly agreed to get involved in our projects and we have started to use this venue for our construction projects. This is where we bring other schools, clubs or colleges to One Vision to produce the items that we need to support The Canal Trusts projects.

**James Rosental & Co Dance Company:** This is just perfect for what we need so that we can rehearse for my company's projects. We have recently choreographed a project at One Vision and used it as a base for a whole week. In this week we produced a Wigan funded project called 'Wigan Born and Bread'.

'Social care officer'

One Vision have always been renowned locally for their innovative thinking and the creative approach they take to supporting their attendee's. Due to recent circumstances, accessing services has obviously been increasingly difficult for individuals with learning disabilities, physical disabilities, and associated health needs due to Covid- 19 but this has not deterred One Vision. They have remained dedicated throughout to providing a service to their attendee's and families to ensure everyone has support in place where it is required.

I have had the pleasure of supporting many individuals to attend One Vision over the years and have only ever seen positive results. Individuals thrive at One Vision, they become more independent and we tend to see an increase in their confidence because of the work they undertake. Attendees are given unbelievable opportunities such as viewing their own short films on the local cinema screen with loved ones and professionals viewing together alongside ongoing work to develop independent skills, make and develop friendships and relationships and to have increased community access.

I know that One Vision is appreciated, loved, and respected by all those who attend, but also by the families, carers and professionals who support all the attendees. The ongoing support is so greatly appreciated by all of the above and as a whole we can't wait to see this fantastic provision go from strength to strength, expanding their offer wherever possible to meet the needs of individuals in borough that would benefit from their input and support.



Parents comments – purple

Social Worker comments – orange

*"I just think they are brilliant, and I love them!!" – Social Care Officer Supervisor.*

*Our son thoroughly enjoys the wide array of social and learning opportunities offered to him by the excellent staff team there and we are not aware of any such flexibility and understanding being offered elsewhere – parents of TC*

*I have a young gentleman and at the present time One Vision are picking him up 3 days a week due to the situation with COVID and he is doing well. Mum said that if he didn't have this he would just be sitting in his room.*

*You all work miracles there. Fantastic. It just goes to show you members feel so at home. They relax look at the results x parents of LD*



*One Vision – you are all amazing! Kevin and Natalie should have their own TV show! Well done to all the staff team – parents of JB*

*I have been a social worker in Wigan for 11 years now – I think that One Vision is the best of the community enterprises and is the one I would recommend for anyone of my family or friends – Social worker.*

*We cannot thank you all enough....the change in our daughter since she has left college and started with you is absolutely amazing. Her confidence has more than doubled. You have helped to make the transition process a walk in the park!!*

*💖💖 – parents of SD*

## **Supporting Health and wellbeing going the extra mile:**

“I have a young gentleman and at the present time they are picking him up 3 days a week due to the situation with COVID and he is doing well. Mum said that if he didn't have this he would just be sitting in his room. This way albeit not everyone is attending he is seeing some of his friends because up until last week he wasn't even seeing his PA on a Saturday.”

– Social Care Officer.

“I have a client with a Severe Learning Disability and challenging behaviours who has been accessing One Vision for a considerable length of time. After my client having numerous agencies supporting him, One Vision is the only service that has been sustainable to meeting his challenging care and support needs that has proved to be very positive with regards to his independence, health and wellbeing. My client really looks forward to attending and he has built really good relationships with the staff.

His mother has nothing but praise for the staff and Manager(s) at One Vision and my experiences has a Social Worker would agree with her comments. I have always found the Manager(s) and staff very helpful, experienced and compassionate about what the service offers and strives to make a positive difference to lives of vulnerable people,

Carers and families.” – Social Worker

I hope that this provides some insight into the ongoing work that One Vision are doing within their local community and highlights how highly thought of they are by all that meet them. They truly are a fantastic asset to Wigan and the passion, empathy, and drive that the staff have to support vulnerable individuals within our local area is irreplaceable.

‘Transition Social care officer’

## **Treasurers' Report**

Insert your organisations annual income/expenditure here –please provide latest Annual Return

Please see attached documents – Annual accounts for April 2020 to March 20













*Registered Charity Number*  
1160946

**REPORT OF THE TRUSTEES AND  
UNAUDITED FINANCIAL STATEMENTS FOR THE YEAR  
ENDED 31 MARCH 2022  
FOR  
ONE VISION MEDIA**

*Fisher & Co.  
Accountants  
Wigan*

**ONE VISION MEDIA**  
**CONTENTS OF THE FINANCIAL STATEMENTS**  
**FOR THE YEAR ENDED 31 MARCH 2022**

	Page
Report of the Trustees	1 to 2
Independent Examiner's Report	3
Statement of Financial Activities	4
Balance Sheet	5 to 6
Notes to Financial Statements	7 to 11

**ONE VISION MEDIA**  
**REPORT OF THE TRUSTEES**  
**FOR THE YEAR ENDED 31 MARCH 2022**

The trustees present their report with the financial statements of the charity for the year ended 31 March 2022.

The accounts have been prepared in accordance with the accounting policies set out in note 1 to the accounts and comply with the charity's trust deed, the Charities Act 2011 and 'Accounting and Reporting by Charities: Statement of Recommended Practice applicable to charities preparing their accounts in accordance with the Financial Reporting Standard applicable in the UK and Republic of Ireland (FRS 102)'.

**REFERENCE AND ADMINISTRATIVE DETAILS**

**Registered Charity Number**  
1160946

**Registered Office**  
Unit 15  
Hope Enterprise Centre  
Scot Lane, Newtown  
Wigan  
WN5 0PN

**Trustees**  
Naomi Hamilton – Chair  
Sharon Jeffers  
Sharon Knight

**Independent Examiner**  
Fisher & Co. (Accountants) Limited  
Pemberton Business Centre  
Richmond Hill  
Pemberton  
Wigan  
WN5 8AA

**Bankers**  
The Co-operative Bank  
Skelmersdale  
WN8 6WT

**STRUCTURE, GOVERNANCE AND MANAGEMENT**

**Governing Document**  
The charity is controlled by its governing document, a deed of trust, and constitutes an unincorporated charity.

**Risk Management**  
The Trustees have a duty to identify and review the risks to which the charity is exposed and to ensure appropriate controls are in place to provide reasonable assurance against fraud and error.



**ONE VISION MEDIA**

**REPORT OF THE TRUSTEES  
FOR THE YEAR ENDED 31 MARCH 2022**

**OBJECTIVES AND ACTIVITIES**

To advance the education of people with disabilities through the provision of:

An alternative community based training and activities programme in film and media education.

A person centred, needs led approach to learning and support that will enable individuals to make informed choices about themselves and their education.

A service that will work with other local groups and organisations to promote and improve community cohesion.

A service that will raise awareness of disability arts in the Wigan borough through participation in events and local arts and disability arts festivals.

To promote social inclusion for the public benefit by preventing people with disabilities from becoming socially excluded, relieving the needs of those people who are socially excluded and assisting them to integrate into society through the provision of:

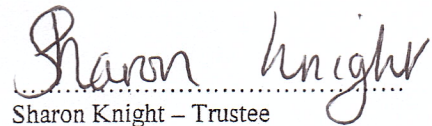
Alternative education opportunities that address a shortfall in mainstream services.

A person centred service that will improve wellbeing, personal and social development.

**PROFESSIONAL ADVISORS**

Mr. John Fisher of Fisher & Co. (Accountants) Limited was appointed as Independent Examiner to the charity, and will be proposed for reappointment at the forthcoming trustee meeting.

On behalf of the Board:

  
.....  
Sharon Knight – Trustee

.....30.11.22.....  
Date

**INDEPENDENT EXAMINER'S REPORT TO THE TRUSTEES OF  
ONE VISION MEDIA**

I report on the accounts for the year ended 31 March 2022 set out on pages four to eleven.

**Respective responsibilities of trustees and examiner**

The charity's trustees are responsible for the preparation of the accounts. The charity's trustees consider that an audit is not required for this year (under section 144(2) of the Charities Act 2011 (the 2011 Act)), and that an independent examination is required.

Having satisfied myself that the charity is eligible for independent examination, it is my responsibility to:

- Examine the accounts under Section 145 of the 2011 Act,
- To follow the procedures laid down in the General Directions given by the Charity Commission (under Section 145(5)(b) of the 2011 Act, and
- To state whether particular matters have come to my attention.

**Basis of the independent examiner's report**

My examination was carried out in accordance with the General Directions given by the Charity Commission. An examination includes a review of the accounting records kept by the charity and a comparison of the accounts presented with those records. It also includes consideration of any unusual items or disclosures in the accounts, and seeking explanations from you as trustees concerning such matters. The procedures undertaken do not provide all the evidence that would be required in an audit, and consequently no opinion is given as to whether the accounts present a 'true and fair view' and the report is limited to those matters set out in the statements below:

**Independent examiner's statement**

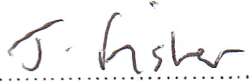
In connection with my examination, no matter has come to my attention other than that disclosed below.

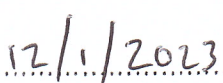
- (1) Which gives me reasonable cause to believe that, in any material respect, the requirements
- To keep accounting records in accordance with Section 130 of the 2011 Act: and
  - To prepare accounts which accord with the accounting records, comply with the accounting requirements of the 2011 Act

Have not been met; or

- (2) To which, in my opinion, attention should be drawn in order to enable a proper understanding of the accounts to be reached.

The matters that have come to my attention are that, in the course of my examination of the accounting records of the charity, it was noted that some transactions relating to the improvements to the properties were not supported by correct documentation and that the lack of internal control caused an unduly long delay in identifying income received twice. The charity trustees are aware of the importance of maintaining full records of such transactions and the importance of internal controls going forward.

.....  
Mr John Fisher F.M.A.A.T., F.F.A.

Date ..........

Member of the Association of Accounting Technicians and the Institute of Financial Accountants  
Fisher & Co. (Accountants) Limited  
Pemberton Business Centre  
Richmond Hill, Pemberton, Wigan, WN5 8AA



ONE VISION MEDIA  
STATEMENT OF FINANCIAL ACTIVITIES  
FOR THE YEAR ENDED 31 MARCH 2022

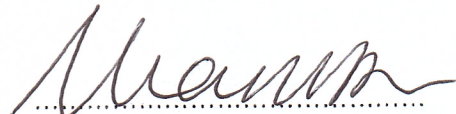
		Unrestricted Funds	Restricted Funds	Total Funds	Last Year Total Funds
	Notes	2022 £	2022 £	2022 £	2021 £
<b>Incoming resources</b>					
<i>Incoming resources from generated funds</i>					
Voluntary Income	2	5,880	-	5,880	12,121
Activities for generating funds	3	721,547	-	721,547	510,649
Investment Income	4	-	-	-	-
<i>Incoming resources from charitable activities</i>	5	809	23,061	23,870	93,012
<b>Total incoming resources</b>		<u>728,236</u>	<u>23,061</u>	<u>751,297</u>	<u>615,782</u>
 <i>Costs of charitable activities</i>	6	695,675	19,391	715,066	593,987
<i>Governance costs</i>	7	30,466	-	30,466	31,539
<b>Total resources expended</b>		<u>726,141</u>	<u>19,391</u>	<u>745,532</u>	<u>625,526</u>
 Net incoming resources before transfers between funds		<u>2,095</u>	<u>3,670</u>	<u>5,765</u>	<u>(9,744)</u>
Gross transfers between funds		-	-	-	-
Net incoming resources before Other recognised gains and losses		<u>2,095</u>	<u>3,670</u>	<u>5,765</u>	<u>(9,744)</u>
 Other recognised gains and losses		-	-	-	-
 <b>Net movement in funds</b>		<u>2,095</u>	<u>3,670</u>	<u>5,765</u>	<u>(9,744)</u>
 Transfers (to) from restricted capital funds					
Equipment fund		4,200	(4,200)	-	-
Buildings renovation fund				-	-
 Exceptional items	13	-	-	-	-
 <i>Total funds brought forward</i>		<u>114,196</u>	<u>-</u>	<u>114,196</u>	<u>123,940</u>
 <b>Total Funds carried forward</b>		<u>120,491</u>	<u>(530)</u>	<u>119,961</u>	<u>114,196</u>

**ONE VISION MEDIA  
BALANCE SHEET  
AS AT 31 MARCH 2022**

	Notes	2022 £	2021 £
<i>The assets and liabilities of the charity :</i>			
<b>Fixed assets</b>			
Tangible assets	9	231,008	180,901
<b>Total fixed assets</b>		<u>231,008</u>	<u>180,901</u>
<b>Current assets</b>			
Debtors	10	1,847	3,519
Cash at bank and in hand		22,294	20,128
<b>Total current assets</b>		<u>24,141</u>	<u>23,647</u>
<b>Creditors:-</b>			
amounts due within one year	11	(126,789)	(77,753)
<b>Net current assets</b>		<u>(102,648)</u>	<u>(54,106)</u>
<b>Total assets less current liabilities</b>		<u>128,360</u>	<u>126,795</u>
<b>Creditors:-</b>			
amounts due after more than one year	12	(8,399)	(12,599)
Provisions for liabilities and charges		-	-
<b>Net assets including pension asset / liability</b>		<u>119,961</u>	<u>114,196</u>
<i>The funds of the charity :</i>			
<b>Unrestricted income funds</b>			
Unrestricted revenue accumulated funds		<u>120,491</u>	<u>114,196</u>
<b>Total unrestricted funds</b>		120,491	114,196
<b>Restricted income funds</b>			
Restricted revenue accumulated funds		<u>(530)</u>	<u>-</u>
<b>Restricted capital funds</b>			
<b>Total restricted funds</b>		(530)	-
<b>Total charity funds</b>		<u>119,961</u>	<u>114,196</u>

ONE VISION MEDIA  
BALANCE SHEET  
AS AT 31 MARCH 2022

The financial statements were approved by the Board of Trustees on 30/11/22 and were signed  
on its behalf by:



Naomi Hamilton – Chair

Date 30/11/22



**ONE VISION MEDIA  
NOTES TO THE FINANCIAL STATEMENTS  
FOR THE YEAR ENDED 31 MARCH 2022**

**1. ACCOUNTING POLICIES**

**Accounting convention**

The financial statements have been prepared in accordance with the charity's trust deed, the Charities Act 2011 and 'Accounting and Reporting by Charities: Statement of Recommended Practice applicable to charities preparing their accounts in accordance with the Financial Reporting Standard applicable in the UK and Republic of Ireland (FRS 102)'.

**Incoming resources**

All incoming resources are included on the Statement of Financial Activities when the charity is legally entitled to the income and the amount can be quantified with reasonable accuracy.

**Resources expended**

Expenditure is accounted for on an accruals basis and has been classified under headings that aggregate all cost related to the category. Where costs cannot be directly attributed to particular headings they have been allocated at activities on the basis consistent with the use of resources. Grants offered subject to conditions which have not been met at the year-end date are noted as a commitment but not accrued as expenditure.

**Tangible fixed assets**

Depreciation is provided at the following annual rates in order to write off each asset over its estimated useful life.

Equipment, fixture and fittings      - 20% reducing balance

**Taxation**

The charity is exempt from tax on its charitable activities.

**Fund accounting**

Restricted funds are subject to specific conditions by donors as to how they may be used. The purposes and uses of the restricted funds are set out in the notes to the accounts. Expenditure which meets these criteria is charged to the fund. Other costs which are attributable to more than one activity are apportioned across the cost categories.

Unrestricted funds are donations and other incoming resources receivable for the objects of the charity without further specified purpose and are available as general funds.

**Leasing and hire purchase commitments**

Rentals payable under operating leases are charged against income on a straight line basis over the period of the lease.

ONE VISION MEDIA  
NOTES TO FINANCIAL STATEMENTS  
FOR THE YEAR ENDED 31 MARCH 2022

**2. VOLUNTARY INCOME**

	2022	2021
	£	£
Fundraising		-
Donations	2,130	987
Grants	3,750	11,134
	<u>5,880</u>	<u>12,121</u>

**3. ACTIVITIES FOR GENERATING FUNDS**

	2022	2021
	£	£
Student fees	719,337	510,649
Room hire and transport	2,210	-
	<u>721,547</u>	<u>510,649</u>

**4. INVESTMENT INCOME**

	2022	2021
	£	£
Bank account interest	-	-

**5. INCOMING RESOURCES FROM CHARITABLE ACTIVITIES**

	Unrestricted Funds	Restricted Funds	2022 £	2021 £
			-	-
SMP funding	809	-	809	882
Forever Manchester			-	4,210
The Edward Gostling Foundation			-	5,000
Cheshire West			-	100
Lottery Fund			-	37,820
The Clothworkers Foundation			-	20,000
Wigan MBC		23,061	23,061	25,000
			-	-
			-	-
	<u>809</u>	<u>23,061</u>	<u>23,870</u>	<u>93,012</u>

**ONE VISION MEDIA**  
**NOTES TO FINANCIAL STATEMENTS**  
**FOR THE YEAR ENDED 31 MARCH 2022**

**6. CHARITABLE ACTIVITIES COSTS**

	Unrestricted Funds	Restricted Funds	2022 £	2021 £
Gross wages and salaries - charitable activities	469,022		469,022	377,875
Employers NIC	32,323		32,323	23,044
Pension contributions charitable employees	13,910		13,910	10,011
Direct resources, activities and materials cost	20,527		20,527	24,578
Lease arrangements of IT and CCTV equip	22,298		22,298	19,397
Freelance workers	6,845		6,845	6,501
Training, software and IT	2,643		2,643	1,538
Payroll charges	1,500		1,500	1,000
Rates and waste	19,223		19,223	20,081
Light and heat	26,392		26,392	14,816
Misc. equipment costs	461		461	587
Repairs and renewals	13,846	19,391	33,237	15,388
Telephone			-	3,452
Telephone (old debt from WMDC)			-	-
Postage, stationery and literature	5,038		5,038	6,650
Vehicle lease	6,735		6,735	6,735
General running costs	4,108		4,108	6,386
Interest charged	1,971		1,971	2,140
Motor and travel expenses	8,337		8,337	14,609
Other professional fees	2,950		2,950	3,206
Insurance	13,836		13,836	9,253
Bank charges	150		150	150
Depreciation of fixed assets used for charity	15,826		15,826	19,237
Security charges	7,734		7,734	7,353
	<u>695,675</u>	<u>19,391</u>	<u>715,066</u>	<u>593,987</u>

**7. GOVERNANCE COSTS**

	Unrestricted Funds	Restricted Funds	2022 £	2021 £
Salaries	26,152		26,152	27,442
Pension scheme	2,098		2,098	2,327
Independent examiner's fee	2,216		2,216	1,770
	<u>30,466</u>	<u>-</u>	<u>30,466</u>	<u>31,539</u>

**8. STAFF COSTS**

	2022 £	2021 £
Wages and salaries	<u>527,497</u>	<u>428,361</u>

The average number of employees during the year was as follows:

	2022	2021
Direct charitable work	27	22
Management and administration	4	3
	<u>31</u>	<u>25</u>



ONE VISION MEDIA  
NOTES TO FINANCIAL STATEMENTS  
FOR THE YEAR ENDED 31 MARCH 2022

**9. TANGIBLE FIXED ASSETS**

	Equip- ment £	Leasehold imp. £	Motor vehicles £	Total £
<b>Cost</b>				
At 1 April 2021	88,630	112,027	32,300	232,957
Additions	4,200	61,733	-	65,933
Disposals	-	-	-	-
At 31 March 2022	<u>92,830</u>	<u>173,760</u>	<u>32,300</u>	<u>298,890</u>
<b>Depreciation</b>				
At 1 April 2021	43,981	-	8,075	52,056
Charge for the year	9,770	-	6,056	15,826
On disposals	-	-	-	-
At 31 March 2022	<u>53,751</u>	<u>-</u>	<u>14,131</u>	<u>67,882</u>
<b>Net book value</b>				
At 31 March 2022	<u>39,079</u>	<u>173,760</u>	<u>18,169</u>	<u>231,008</u>
At 31 March 2021	<u>44,649</u>	<u>112,027</u>	<u>24,225</u>	<u>180,901</u>

**10. DEBTORS: AMOUNTS FALLING DUE WITHIN ONE YEAR**

	2022 £	2021 £
Trade debtors	-	-
Prepayments	<u>1,847</u>	<u>3,519</u>
	<u>1,847</u>	<u>3,519</u>

**11. CREDITORS: AMOUNTS FALLING DUE WITHIN ONE YEAR**

	2022 £	2021 £
Trade creditors and accruals	17,720	2,350
Leases and finance < one year	4,200	4,200
PAYE & NIC	102,689	69,771
Sundry creditor	2,180	1,432
Reserve funds	-	-
	<u>126,789</u>	<u>77,753</u>

**12. CREDITORS: AMOUNTS FALLING DUE WITHIN ONE YEAR**

	2022 £	2021 £
Leases and finance > one year	8,399	12,599
Reserve funds	-	-
	<u>8,399</u>	<u>12,599</u>

**13. CONTROL**

The charity is controlled by the trustees.

ONE VISION MEDIA  
NOTES TO FINANCIAL STATEMENTS  
FOR THE YEAR ENDED 31 MARCH 2022

13. EXCEPTIONAL ITEMS

	2022	2021
	£	£
Transfer (One Vision Media Productions)	-	-
	<u>-</u>	<u>-</u>
	<u>-</u>	<u>-</u>

**INDEPENDENT EXAMINER'S REPORT TO THE TRUSTEES OF  
ONE VISION MEDIA**

I report on the accounts for the year ended 31 March 2022 set out on pages four to eleven.

**Respective responsibilities of trustees and examiner**

The charity's trustees are responsible for the preparation of the accounts. The charity's trustees consider that an audit is not required for this year (under section 144(2) of the Charities Act 2011 (the 2011 Act)), and that an independent examination is required.

Having satisfied myself that the charity is eligible for independent examination, it is my responsibility to:

- Examine the accounts under Section 145 of the 2011 Act,
- To follow the procedures laid down in the General Directions given by the Charity Commission (under Section 145(5)(b) of the 2011 Act, and
- To state whether particular matters have come to my attention.

**Basis of the independent examiner's report**

My examination was carried out in accordance with the General Directions given by the Charity Commission. An examination includes a review of the accounting records kept by the charity and a comparison of the accounts presented with those records. It also includes consideration of any unusual items or disclosures in the accounts, and seeking explanations from you as trustees concerning such matters. The procedures undertaken do not provide all the evidence that would be required in an audit, and consequently no opinion is given as to whether the accounts present a 'true and fair view' and the report is limited to those matters set out in the statements below:

**Independent examiner's statement**

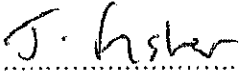
In connection with my examination, no matter has come to my attention other than that disclosed below.

- (1) Which gives me reasonable cause to believe that, in any material respect, the requirements
- To keep accounting records in accordance with Section 130 of the 2011 Act; and
  - To prepare accounts which accord with the accounting records, comply with the accounting requirements of the 2011 Act

Have not been met; or

- (2) To which, in my opinion, attention should be drawn in order to enable a proper understanding of the accounts to be reached.

The matters that have come to my attention are that, in the course of my examination of the accounting records of the charity, it was noted that some transactions relating to the improvements to the properties were not supported by correct documentation and that the lack of internal control caused an unduly long delay in identifying income received twice. The charity trustees are aware of the importance of maintaining full records of such transactions and the importance of internal controls going forward.

  
.....  
Mr John Fisher F.M.A.A.T., F.F.A.

Date 12/1/2023

Member of the Association of Accounting Technicians and the Institute of Financial Accountants  
Fisher & Co. (Accountants) Limited  
Pemberton Business Centre  
Richmond Hill, Pemberton, Wigan, WN5 8AA