



# TRUSTEES' ANNUAL REPORT

(April 24 – March 25)

## Borderline Arts (CIO)

**Email:** [contact@borderlinearts.org](mailto:contact@borderlinearts.org)

**Website:** [www.borderlinearts.org](http://www.borderlinearts.org)

**Tel:** 07754 806814

**Address:** 119 Osmaston Rd  
Derby, DE1 2GD

**Charity Number:** 1160324



# **CONTENTS PAGE**

<b>TRUSTEE AND CHARITY INFORMATION</b>	<b>3</b>
<b>DESCRIPTION OF THE CHARITY'S TRUSTS</b>	<b>4</b>
<b>OBJECTS, OBJECTIVES AND ACTIVITIES OF THE CHARITY</b>	<b>5</b>
<b>ACTIVITIES CARRIED OUT</b>	<b>6</b>
<b>FINANCIAL REVIEW</b>	<b>10</b>
<b>CHARITY ACCOUNTS</b>	<b>12</b>
<b>TRUSTEE DECLARATION</b>	<b>14</b>

# TRUSTEE AND CHARITY INFORMATION

**Charity Name:** BORDERLINE ARTS (CIO)

**Other names charity is known by:** BORDERLINE

**Registered Charity Number:** 1160324

**Charity Address:** 119 Osmaston Rd, Derby, DE1 2GD

**Names of the charity trustees who manage the charity:**

Trustee Name	Office/Role	Dates if not acted for whole year
Sarah Eley	Founder/Coordinator	N/A
Kevin Bagshaw	Chairperson	N/A
Jill Broughton	Adviser	N/A
Pauline Shephard	Secretary	N/A
Lesley Edwards	Treasurer	N/A
Victoria Vaughan	Adviser	N/A

**Name of chief executive or names of senior staff members (Optional information):**

There are no paid staff working for the charity

# DESCRIPTION OF THE CHARITY'S TRUSTS

**Type of governing document:** Constitution

**How the charity is constituted:** Charitable Incorporated Organisation

**Trustee selection methods:** Trustees are appointed during the year as required by decision of the trustees in office.

## Additional governance issues (Optional information)

You **may choose** to include additional information, where relevant, about:

- *Policies and procedures adopted for the induction and training of trustees;*
- *The charity's organisational structure and wider network with which the charity works;*
- *Relationship with any related parties;*
- *Trustees' consideration of major risks and the system and procedures to manage them*

All trustees give of their time and expertise voluntarily. Trustees do not receive any remuneration or benefits

# OBJECTS OF THE CHARITY

## Summary of the objects of the charity set out in its governing document

1. To promote and protect the Physical and Mental Health of Sufferers of Borderline Personality Disorder (BPD) and their relatives, dependants and carers through the provision of support, education and practical advice.
2. To advance the education of the general public in all areas relating to BPD, in particular by the provision of training and raising public awareness of BPD.

*"Can't believe how lucky I am to live in the same city as the one UK charity for BPD!!"*  
**Art Group Member**

## ADDITIONAL DETAILS OF OBJECTIVES AND ACTIVITIES *(Optional Information)*

***You may choose to include further statements, where relevant, about: policy on grant-making, policy programme related investment and contribution made by volunteers.***

A huge contribution is made by member volunteers with their valuable contribution of time and energy and expertise. Without this commitment the Charity would not have been able to achieve so much in this period.

# ACTIVITIES CARRIED OUT

***Summary of the main activities undertaken for the public benefit in relation to these objects (include within this section the statutory declaration that trustees have had regard to the guidance issued by the Charity Commission on public benefit)***

In planning our activities for the year we kept in mind the Charity Commission guidance on public benefit at our trustees' meetings. The focus of our activities is to raise awareness of Borderline Personality Disorder (BPD) with the general public and provide support for people living with BPD and their carers through education, training and practical advice.

**During the year we ran the following activities:**

## MONTHLY CREATIVE GROUPS

These are free art and writing groups run on a monthly basis for individuals with BPD to come together and engage in creative activities. The groups are free of charge to ensure they are accessible to all those with BPD, as many are on benefits or low income and would otherwise struggle to attend and participate.

However, we have had to put these workshops on hold for the time being, whilst we recruit a Workshops Administrator. Their role will be to promote the sessions and to carry out the admin related to our workshops. Once we have a suitable volunteer in place, we intend to relaunch these creative groups with invigorated energy and hopefully reach out to many people who would benefit from and really enjoy these supportive groups.

For more information, please head to: [www.borderlinearts.org/art-and-writing-groups](http://www.borderlinearts.org/art-and-writing-groups)

## CREATIVE EDUCATIONAL WORKSHOPS

***Our workshops enable participants to:***

- \* Express their personal thoughts and feelings about BPD.
- \* Learn more about the condition.
- \* Learn ways to sensitively relate to someone with BPD.



A large part of these sessions uses creative activities to aid learning. We also ensure that those providing the teaching always includes someone with lived experience of BPD (as well as a professional where possible). Both the creativity and firsthand stories help participants to connect with the content on a deeper level than simply listening to facts.

**People who've attended have said that the workshop has increased their:**

- Understanding of the complexity in which the condition affects those with BPD.
- Confidence in supporting those with BPD, practically and emotionally.

## Nottingham University

We conducted two professional training workshops at Nottingham University in November 2024. One was for the MA social work students and one for BA social work students.

Both of these were extremely well received, with excellent feedback from students on how much insight and understanding they have gained about Borderline Personality Disorder.

*“Students got a lot out of the session and commented on how useful the role plays you did at the end were too. In the end of module evaluations, students commented on how helpful your session was. They thought the session was great and found your own experiences really powerful to hear, Sarah. Thank you!”. (BA Programme Director and MA Lecturer)*

## MEDICAL STUDENT VISITS

The Psychiatry Teaching Unit, based at the Radbourne Unit in Derby teaches medical students from the University of Nottingham, who are on their Psychiatry Placement in Derby. As part of their placement, students are given the opportunity to visit mental health groups and organisations working in the community. Borderline Arts is linked with the Psychiatry Teaching Unit for this purpose, and over this period, we’ve had placement visits from five medical students.

On their visit, Sarah introduces them to the origins of Borderline Arts, what we do and why. She explains the role of art in supporting emotional wellbeing and mental health recovery.

When there is an art group running on the day of a visit, students are able to join the session, provided our group members are happy with this. This is a great chance for them to observe how creative spaces are used to support mental health.

When there is not a group running, Sarah chats with the students about what BPD is, the symptoms and diagnostic criteria and how they play out in her life. This gives the students the opportunity to gain understanding of BPD, hear firsthand experiences and ask questions, which might not be appropriate to ask patients they are working with.

We believe it is vitally important to help Medical Students gain a non-stigmatising understanding of BPD, as they will be the Doctors of the future who are potentially treating those with the diagnosis!

*Sarah, thank you so much for having us over to meet you. It was great to learn more about you and your organisation and we were really grateful for you sharing your history!*  
(Medical Student)

## FILM PROJECT

We're making great progress with our upcoming film 'On The Borderline' - an exciting collaboration with [Smith & Smith Productions](#). We're moving toward the production phase:



Gav, our script writer has now finished the script for our film! The film is set in a therapy group and shows the reality of life for several adults living with BPD.

We have written a proposal to use to try to secure funding!

We have received written endorsements to support our funding applications from:

**Dr Subodh Dave:** Associate Dean of the Royal College of Psychiatrists and Deputy director of undergraduate medical education, Nottingham University

**Dr Neil Springham:** Chief Therapies Officer, Executive Lead for Patient Experience, consultant art therapist. Oxleas NHS Foundation Trust.

**Dr Arun Chidambaram:** Medical Director of Derbyshire Healthcare NHS Foundation Trust.

Once funding is in place, we will then be putting call outs for actors and crew etc! You can read more about this by clicking [here](#).

## RAISING AWARENESS VIA OUR WEBSITE

Our [website](#) is a useful first port of call for anyone wanting to know all about BPD and what we are doing. We are aware that we have online visitors from all over the world, so it's a really important part of what we do.

*"Thanks for putting together such a fantastic website – I love it, it's really helpful, informative and inspiring and the art and writing there has made me feel much less alone. I believe what you are doing is very valuable to a lot of people".*

Many people with BPD have told us that simply seeing the website and knowing there are people out there who understand BPD and are 'fighting for them' has really helped them feel less alone.

Lots of people who don't have BPD have shared how useful the website and articles are to them in gaining further understanding of the illness and how to support those with the condition.

During the past year, we have had a rebrand of our graphics and our website. An image of the rebranded website can be seen in the following section. This was not only to modernise the aesthetics, but also to make the website easier to navigate. Feedback has been very positive.



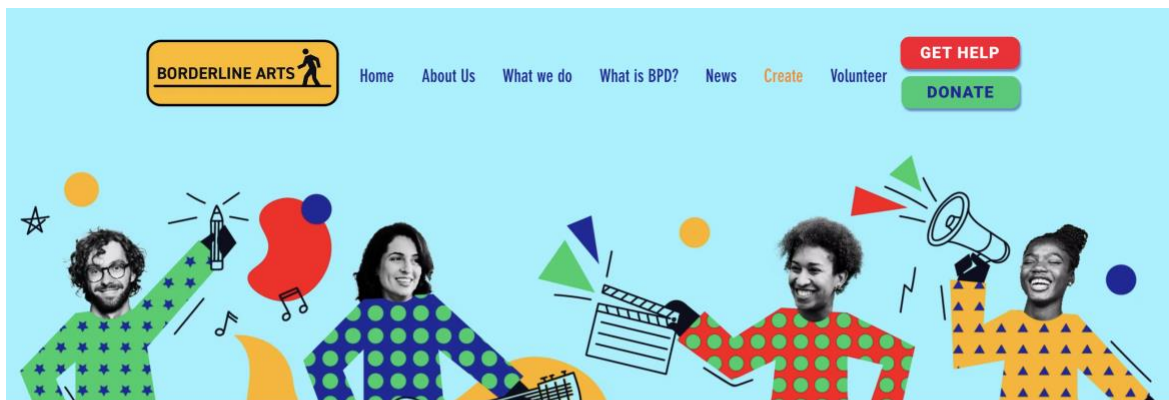
## ONLINE ART & WRITING GALLERIES

One of the elements on our website is our online art and writing galleries. We have continued to run this online project, in which we invite adults with BPD (anywhere in the world!) to create and submit piece/s of writing or pieces of art expressing their experience of life with BPD. We then add it to our online galleries.

***The purpose of these galleries is to:***

- **Showcase, promote & celebrate** the creative work of those diagnosed with BPD
- **Empower** adults with BPD to raise awareness of the condition
- Help **raise awareness & tackle the stigma** of BPD (from a variety of personal experiences)

*You can find out more or browse the writing gallery [here](#) or browse the art gallery [here](#).*



## Creative Hub

Our creative galleries showcase art and writing by those diagnosed with BPD.

By promoting and celebrating these creative talents, we hope to celebrate and showcase the skills of these artists and encourage others to see the individuals behind the BPD label. Their shared first-hand experiences can also help raise awareness, reduce stigma, and allow an understanding of their condition.

## Art Gallery

Scroll through our artists' gallery and click on any image to learn more about the creator and their work



# FINANCIAL REVIEW

## Brief statement of the charity's policy on reserves

Cash reserves are regularly reviewed. The Charity holds sufficient cash to cover at least 3 months office costs and planned events and to meet any unforeseen expenditure that may occur.

**Details of any funds materially in deficit:** Not applicable

## Further financial review details (Optional information)

You **may choose** to include additional information, where relevant about:

- The charity's principal sources of funds (including any fundraising);
- How expenditure has supported the key objectives of the charity;
- Investment policy and objectives including any ethical investment policy adopted.

## Randal Charitable Foundation and Foundation Derbyshire



We are absolutely delighted to have been granted the generous sum of £3000 by Randal Charitable Trust.

This is to assist us with general running costs to enable us to concentrate on major projects such as our film project and re launching our creative workshops. This really is a godsend for us and we can't thank them enough.

We would like to also thank Foundation Derbyshire for linking us here at Borderline Arts with this charity, who specifically wanted to help a small charity working to support those with mental health issues. We received the grant BLA on 29th November 2024, for expenditure for the period April 2025 – March 2026.



## St. Peters Littleover and Blagreaves

St Peter's Church and congregation are sponsoring us in 3 increments of £500 over 3 years. We received the final payment in January 2025. We are so grateful to St Peter's for their kind generosity. This support has made a **HUGE difference** to us, enabling us to cover many of our basic costs. This money is so important to us to be able to move forwards and continue to support those with this very debilitating mental illness.

## ***Fundraising***

We've been **overwhelmed by the support of so many people this year!** Many people have also supported us through **online fundraisers, Paypal Giving Fund, Paypal Checkout, Gift Aid, Local Giving Donations, Easy Fundraising, Facebook birthday fundraisers**, and much more. We also raised a lot of money on Local Giving – through fundraisers, for which we are very grateful. We're so thankful to every single person who has supported us in any way!  
**THANK YOU!**

## ***Reserves***

We have total reserves of £13,855 of which we have restricted funds of £2,122 specifically for our film project. The balance of £11,733 is in general reserves of which the Board of Trustees have designated a further £7,856 for the film project. General reserves include the £3,000 grant received from the Randal Charitable Fund for expenditure on running costs for the period April 2025 - March 2026.

# CHARITY ACCOUNTS (APRIL 24 – MARCH 25)



CHARITY COMMISSION  
FOR ENGLAND AND WALES

Charity Name  
**BORDERLINE ARTS**

No (if any)  
1160324

## Receipts and payments accounts

CC16a

For the period from	Period start date 01.04.2024	To	Period end date 31.03.2025
------------------------	---------------------------------	----	-------------------------------

### Section A Receipts and payments


	Unrestricted funds to the nearest £	Restricted funds to the nearest £	Endowment funds to the nearest £	Total funds to the nearest £	Last year to the nearest £
<b>A1 Receipts</b>					
Local Giving donations	412			412	374
Workshop income	400			400	1,600
Paypal Giving Fund/Go Fund Me	246			246	434
Donations & Easy Fundraising	644			644	823
Church donations	500			500	500
Grants	3,000			3,000	-
Gift Aid	61			61	-
Bank Interest	231			231	-
<b>Sub total (Gross income for AR)</b>	<b>5,494</b>			<b>5,494</b>	<b>3,731</b>
<b>A2 Asset and investment sales, (see table).</b>					
	-			-	-
<b>Sub total</b>	<b>-</b>			<b>-</b>	<b>-</b>
<b>Total receipts</b>	<b>5,494</b>			<b>5,494</b>	<b>3,731</b>
<b>A3 Payments</b>					
Rent	1,650			1,650	1,650
Insurance	329			329	310
Website & Computer costs	1,005			1,005	932
Subscriptions	180			180	180
Publicity & Printing	60			60	564
Office expenses inc. mobile phone	82			82	139
Volunteer expenses	-			-	-
Travel costs re: Workshops	-			-	-
<b>Sub total</b>	<b>3,306</b>			<b>3,306</b>	<b>3,775</b>
<b>A4 Asset and investment purchases, (see table)</b>					
<b>Sub total</b>					<b>-</b>
<b>Total payments</b>	<b>3,306</b>			<b>3,306</b>	<b>3,775</b>
<b>Net of receipts/(payments)</b>	<b>2,188</b>			<b>2,188</b>	<b>- 44</b>
<b>A5 Transfers between funds</b>					<b>-</b>
<b>A6 Cash funds last year end</b>	<b>9,545</b>	<b>2,122</b>		<b>11,667</b>	<b>11,711</b>
<b>Cash funds this year end</b>	<b>11,733</b>	<b>2,122</b>		<b>13,855</b>	<b>11,667</b>



# TRUSTEE DECLARATION

The trustees declare that they have approved the trustees' report above.

*Signed on behalf of the charity's trustees:*

<b>Full name(s):</b>	Lesley Elizabeth Edwards
<b>Position (eg Secretary, Chair, etc):</b>	Treasurer
<b>Date:</b>	19 <sup>th</sup> September 2025
<b>Signature:</b>	

<b>Full name(s):</b>	Sarah Eley
<b>Position (eg Secretary, Chair, etc):</b>	Founder and Coordinator
<b>Date:</b>	19 <sup>th</sup> September 2025
<b>Signature:</b>	