

Company registration number: 09272223

Charity registration number: 1159939

The Parks Foundation

(A company limited by guarantee)

Annual Report and Financial Statements

for the Year Ended 31 March 2023

Oak Accounting Ltd
Independent examiners
27 Bascott Road
Wallisdown
Bournemouth
Dorset
BH11 8RJ

The Parks Foundation

Reference and Administrative Details

Trustees

Mark Cribb

Jacqueline Thorne

Roger Brown

Mark Holloway

Mark Kiteley

John Taylor

Debra Cohen

Stuart Folley

Note:

Jacqueline Thorne resigned 17th July 2023

John Taylor resigned 17th July 2023

Charity Registration Number 1159939

Company Registration Number 09272223

Registered Office

The charity is incorporated in England.

The Cricket Pavilion

Winton Recreation Ground

Fitzharris Avenue

Bournemouth

Dorset

BH9 1BX

Principal Office

The Cricket Pavilion

Winton Recreation Ground

Fitzharris Avenue

Bournemouth

Dorset

BH9 1BX

Independent Examiner

Oak Accounting Ltd

Independent examiners

27 Bascott Road

Wallisdown

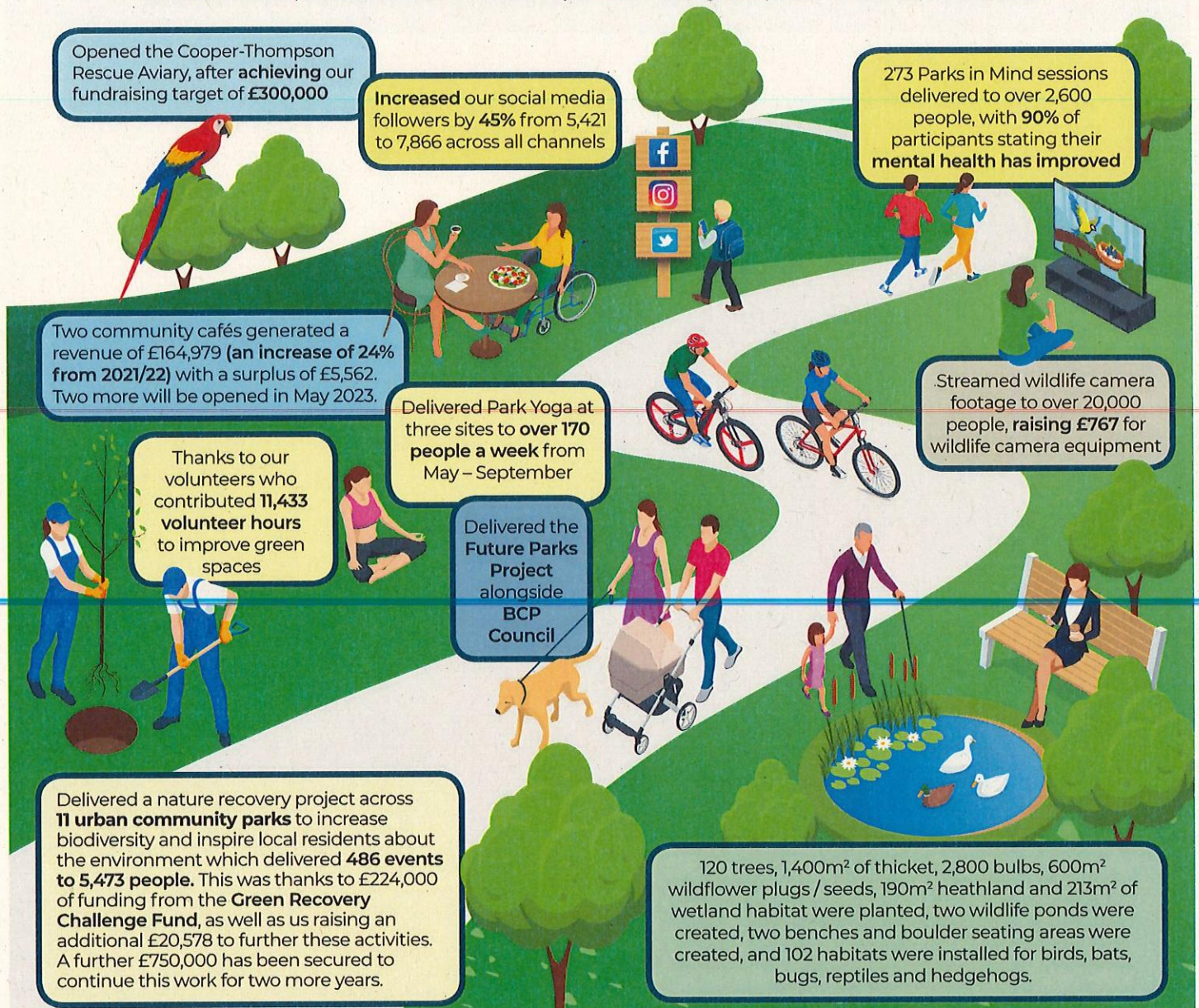
Bournemouth

Dorset

BH11 8RJ

2022-23 ANNUAL REVIEW

We aim to create inspirational parks that improve people's health and wellbeing, reconnect people with nature and bring diverse communities together. We want to improve our green spaces to support Bournemouth, Poole & Christchurch's reputation as a great place to live, work and play.



FUNDS OF THE CHARITY

CHARITY INCOME	TRADING INCOME	UNRESTRICTED FUNDS	CHARITY EXPENDITURE
2022/23 £342,941	2022/23 £164,979	2022/23 £200,971	2022/23 £608,874
2021/22 £509,705	2021/22 £132,864	2021/22 £180,121	2021/22 £773,926
33% decrease	24% increase	21% increase	27% decrease

Together we can create amazing parks

T: 01202 143724 | E: info@parksfoundation.org.uk | W: parksfoundation.org.uk

The Parks Foundation Trustee Report 2022/23

Objectives and Activities

The charity's purposes, as set out in the objects contained in the charity's Memorandum of Association are:

- a) To provide and enhance, or assist in such, the facilities, maintenance, equipping of parks, gardens, landscaped areas, woodland, open spaces, playing fields, playgrounds, nature reserves and recreational amenity spaces within Bournemouth, Christchurch and Poole (BCP), and the environs for the benefit of the inhabitants thereof;
- b) To advance public education in the area of benefit with particular regard to horticulture, arboriculture, ecology, geology, archaeology, heritage and local history;
- c) To provide or assist in the provision of facilities for recreation or other leisure time occupation in the interests of social welfare and with the object of improving the conditions of life for the inhabitants of the area of benefit.

Public benefit

The Parks Foundation's (The Foundation) focus is on:

- Wildlife and conservation: public parks, amenity spaces and nature reserves all provide essential habitats for native flora and fauna. Investing in nature conservation will help with improving biodiversity and increases awareness and enjoyment of nature amongst the community.
- Education: Parks act as an outdoor education resource both formally (with schools, colleges and universities) and informally for horticulture, arboriculture, ecology, geology, archaeology, sport, heritage and local history.
- Health and wellbeing: There is a wealth of evidence of the positive effect of spending time in the natural environment and how the quality of the parks and green space close to home shapes our health over a lifetime. A good quality environment is closely associated with a decrease in problems such as high blood pressure and depression. Better mental health, reduced anxiety and stress are also linked with outdoor physical activity.
- Gardening and growing: Fewer adults and children have access to gardens than in the previous generation. Gardening can transform lives regardless of age or ability. Parks can provide allotments and community growing spaces.
- Children's play: Providing play opportunities in free public playgrounds or in less formal settings such as nature reserves brings wide benefits to children and their parents for physical development, socialising, health and learning.
- Sport: Parks provide a setting for numerous formal and informal sporting activities. Sport can bring different cultures and communities together and provide social opportunities, provision of public sports facilities is also important as a source of exercise for health and disease prevention.
- Public art and cultural events: Public art in open spaces can be aesthetically pleasing, uplifting, interactive and inspiring. Cultural events are enriching for residents and visitors alike and help bring understanding and tolerance to different communities.

The Parks Foundation's Trustees have reviewed the Charity Commission's guidance on public benefit and are confident The Foundation is delivering against our objectives, which is demonstrated through our impact in 2022/23.



Achievements and Performance

During our eighth year as a charity The Foundation continued to increase its impact by expanding the number of projects delivered and generating additional funds for parks and greenspaces across Bournemouth, Christchurch & Poole. The most significant activity delivered was a Nature Recovery project, which improved the biodiversity in 11 community neighbourhood parks while educating and inspiring local residents about the nature on their doorstep.

Furthermore, our trading activities started to trade through a charitable trading arm, The Parks Foundation Trading Ltd, which also explored some potential new trading opportunities for the charity.

Project delivery

- **Nature Recovery project (formerly Pilot Parks)**

While continuing work in the original three Pilot Parks, thanks to £224,000 of funding from the Green Recovery Challenge Fund (a partnership between DEFRA, the Heritage Fund, the Environment Agency and Natural England) this work was expanded to eight further community parks. A Project Manager and four Parks Activators delivered 486 nature-based events to 5,473 people. These events ranged from nature craft clubs to family friendly 'Park Life' sessions, to tree and bulb planting, to creating volunteering groups which reduced social isolation and created an army of passionate people wanting to improve their local parks.

One participant told us *"I think it's brilliant all the things you do and it gives me hope to look around and see things being actively done and our next generation educated to care about our planet and fellow species"*. As well as a local resident informing a Ward Councillor *"I had to let you know what a brilliant job Daniel McLaughlin [one of our Parks Activators] is doing educating everyone about the park environment. My grandchildren were fascinated with the bug hunting exercise, and I now have a greater appreciation of the benefits of allowing grass to grow. His enthusiasm is so infectious, and I really hope that Daniel's presence will continue to be a feature of Slades Park"*.

Plans were created showcasing the biodiversity improvements we wanted to make, which aimed to inspire interest and engagement within the spaces. Visually engaging images were used to describe the benefits of the proposed changes for wildlife as well as the new features for people, such as new seating, foraging trees and growing plots. An online survey (open for five months from April – August 2022) was carried out, as well as engagement events in each park, to gather resident's opinions about the planned changes. 157 survey responses were received. Of the respondents, 90% said they felt happy with all or most of the proposed changes being made in the parks.

During the year 120 trees, 1,400m² of thicket, 2800 bulbs, 600m² wildflower plugs/seeds, 190m² heathland and 213m² of wetland habitat were planted, two wildlife ponds were created, two benches and boulder seating areas were created, and 102 habitats were installed for birds, bats, bugs, reptiles and hedgehogs.

A further £750,000 of funding has been secured to deliver this project in 14 parks over the next two years. Thanks to the UK Shared Prosperity Fund, the Heritage Fund, Public Health Dorset as well as other smaller funders for supporting this work. Going forward the project will be known as Green Heart Parks and will have an additional focus on increasing diversity of park users and increasing our trading activities in these spaces.



- **Parks in Mind**

Now in its fifth year of delivery, our ecotherapy project creates a positive change to people's physical and mental health through a therapeutic parks programme. The project focuses on parks in Boscombe and areas of Bournemouth with significant deprivation, connecting people to the outdoors and their local parks and open spaces. As a result, the quality of the parks improves so the wider community also benefit. Our beneficiaries valued the interaction with nature, arts, crafts and wellbeing delivered through the programme.

- o We delivered 273 sessions, of which 63 were online, with an average of 10 people attending each session.
- o 90% of participants agree or strongly agree that their mental health and wellbeing has improved since attending Parks in Mind sessions.
- o 86% of attendees feel more connected to their local community.
- o 74% of attendees are making new friends.
- o 70% of participants agree or strongly agree that their physical fitness levels have increased since starting Parks in Mind activities.
- o The project saw 273 new people sign up directly to the mailing list and, over the last twelve months, our Facebook group grew from 1267 to 2108 people.

Feedback from our beneficiaries and a referral partner include: *"It was a really friendly session. I did not feel out of place although I did not know anyone there. Thank you for making me feel so welcome"* – Sharon A. (Referral from East Way Surgery) and *"A fantastic programme that we promote to our patients"* – Emma Prince, Network Director, Bournemouth East Collaborative PCN.

Thanks to The People's Health Trust who funded a proportion of the project until October 2022, and to the Bournemouth Towns Fund who are supporting it for a further three and a half years. During 2023 we will be applying for funding to expand our Parks in Mind project into Poole.

- **Future Parks project**

The Foundation have continued to deliver the Future Parks project, funded by the National Lottery Heritage Fund, National Trust and Department for Levelling Up, Housing and Communities, alongside the project partners BCP Council. The Future Parks project aims to deliver a strategic change in park management, inspiring people to spend longer in parks, which are more financially secure and have an increasing abundance of wildlife within them. Phase one of the project culminated with a celebration seminar in November 2022 showcasing the project's three main outputs:

1. A Green Infrastructure Strategy for BCP Council– with a vision to secure investment in the delivery of a multi-functional green infrastructure network, weaving together and enriching green and blue spaces throughout Bournemouth, Christchurch and Poole, known as the 'Green Net'.
2. Green Heart Parks – an operating model for improving urban community parks for people and wildlife delivered in partnership between the Foundation and BCP Council.
3. Stour Valley Park - A landscape scale project stretching 25km along the Stour Valley River offering huge potential to restore biodiversity and ecological health, and to celebrate and uncover the valley's heritage and ancient history. The National Trust have employed a programme manager to deliver the next phase of work that includes governance, funding, landowner engagement and partnership development.

Alongside these outputs the project delivered improved data & GIS mapping of BCP's greenspaces, created strategies for volunteering, trading and in memorial giving, and explored green financing opportunities.

The next phase of Future Parks is a £375,000 funded project focusing on urban greening to bring nature closer to our communities across Bournemouth, Christchurch & Poole. In partnership with BCP Council, we will explore more natural approaches to improving our public realm, whilst fully appreciating and improving our greenspaces. We will work with local landowners and developers to ensure we collectively manage shared spaces to benefit both local wildlife and the needs of our communities. This project is funded until September 2024.

- **Wildlife cameras**

During the 2022 breeding season we live streamed nesting herons, kestrels and blue tits as well as wildlife gardens from BCP's nature reserves. Alongside this we raised £767 to invest in new wildlife cameras, with an ambition of engaging more of our community with nature.

- **Contactless Donation trial**

The Foundation has continued to develop our outdoor contactless donation units as part of a previously funded project by NESTA. During 2022 we reviewed and updated our four prototypes to ensure they were all functioning and operating properly. New hardware was installed to each of the units. The contactless donation unit located by the aviary is the most successful, receiving an average of £252 donations a month. The donation unit we have in Bournemouth Gardens will now have alternating seasonal interpretation focusing on climate change and nature recovering messaging. Unfortunately, some of our other contactless donation units have not worked as well as the aviary unit, receiving an average of £22 a month.

- **Park Yoga**

In 2022 we delivered Park Yoga at two sites (Bournemouth Lower Gardens and the Quomps in Christchurch) as well as in Shelley Park through our Parks in Mind project. We regularly saw over 170 people attending across the three sites between May – September. One participant told us *"This year has been difficult for me due to a seriously ill family member. The hour I spend at park yoga looking after my own wellbeing has really helped me"*, showing the difference these sessions have made to people's wellbeing.

Fundraising

Throughout 2022/23 the Foundation continued to deliver on its fundraising strategy objectives:

1. Increasing awareness and engagement with The Foundation supporters: our social media followers grew by 45% to 7,866 people and our e-newsletter followers grew by 49% to 1,583 people.
2. Delivering cost effective fundraising activities: our focus remains on grant applications which have generated £301,936 of income this financial year and accounts for 91% of our fundraising income. We also secured a further £750,000 in our pipeline of grants to deliver our Green Heart Parks project over the next two years.
3. Be insight and data driven: Due to our new CRM system not being ready for use (see below) we have been unable to comprehensively deliver against this target. However, we continue to avoid mass communications, analyse everything we send to our supporters, and have carried out a number of surveys to determine our effectiveness.



Other key fundraising achievements include:

- **Nature Recovery project:** As well as receiving £224,000 of grant funding to deliver our nature recovery project from the Green Recovery Challenge Fund, we've raised an additional £20,578 to further these activities. An additional £579 was raised through event income. This included a match-funded campaign through the Big Give Green Match Fund raising £2,639 where donations were doubled over a week period.
- **Canford Heath Fire:** Following a devastating fire on Canford Heath Nature Reserve, we are extremely grateful for the £1,254 of donations that were raised to support the heathland restoration.
- **Poole Park Railway:** To support the much-loved railway's restoration in Poole Park we were granted £50,000 from Community Infrastructure Levy funds to repair the track and improve the engine shed. We worked with BCP Council to make these improvements, with the railway re-opening in October 2022.
- **The Cooper-Thompson Rescue Aviary** was officially opened in May 2022. Thanks to donations from local residents and aviary visitors who kindly raised £5,068 to help the on-going maintenance of the heritage attraction.
- **Implemented a new CRM system:** during 2022/23 we have been implementing a new CRM (Customer Relationship Management) system called Donorfy. This database will improve our donor and volunteer management systems. Unfortunately, the implementation of the system hasn't gone as smoothly as planned, however we hope the system will be operational early in the 2023/24 financial year.

Trading

In April 2022 we started to trade through our charitable trading company; The Parks Foundation Trading Ltd (Company number: 13837060) of which the Foundation is the sole shareholder. Any surplus from the charitable trading arm will be gifted to the charity to further our charitable objects.

Our charitable trading company saw income grow to £164,979 in 2022/23, an increase of 24% compared to 2021/22, with an operating surplus of £5,562.

- **Kingfisher Barn Visitor Centre:** The Barn, which is supported by a team of volunteers, continues to deliver a variety of environmental educational activities to residents, alongside a small café offering. A successful gardening volunteer group takes place weekly to support the wildlife garden at the Visitor Centre, this regularly sees eight volunteers attending. Revenue for the year was £67,621 with an operating surplus of £241. In 2023 we are hoping to raise funds for an outdoor education classroom which will significantly enhance our offer and enable us to deliver more activities, especially in colder months.
- **Winton Park Café:** The community café supports individuals with learning difficulties, providing volunteer opportunities to increase the beneficiary's work experience and build confidence. We have worked with a local charity, PramaCare, to reduce social isolation through activities such as a carer's group, board games sessions and dementia-friendly groups. Revenue for the year was £97,242 (an increase of £21,498) with an operating surplus of £5,320.

In 2022/23 we plan to open two further community cafes at Redhill Park and Boscombe Chine Gardens. We also secured £130,000 towards pavilion improvements at Alexandra Park with a view to opening a community café there in spring 2024.

Outstanding volunteers

The Board of Trustees would like to express their gratitude to all our volunteers who have supported our projects, including Winton Park Café, Kingfisher Barn Visitor Centre, Parks in Mind, Nature Recovery project as well as our office operations. In total 11,433 hours, were donated by our amazing volunteers throughout the year, this would equate to four full time staff working over the year.

Going concern

The Board of Trustees are satisfied with the performance of the charity during the accounting period and the position as of 31st March 2023. The Board considers that The Foundation is in a reasonable position to continue its activities during the coming year, and that the charity's assets are adequate to fulfil its obligations.

Financial Review

The Statement of Financial Activities shows net assets for the financial period ending 31st March 2022 of £278,367. The total funds at the period stand at £278,367, including the restricted funds of £77,396 and the designated reserve fund of £200,971.

Policy on reserves

The Foundation separates its financial reserves into:

- Restricted Funds – specific to a particular project or purpose as stipulated by the donor or achieved through a project specific fundraising campaign;
- Unrestricted Funds – to underpin the general operations of the Foundation (administration) and to be available to cover unforeseen events. Our unrestricted funds include a small percentage (6%) of designated funds for specific projects we're delivering/fundraising for.

As per Charity Commission guidance, the Foundation aim to keep Unrestricted Funds at a level equivalent to between three and six months of the Foundation's operating costs including project, staff and core costs. This is to ensure we have enough reserves to operate for a short period, should we not be able to generate our budgeted income. Our reserves are currently at four months of our operating costs. As such, our Trustees are satisfied with our current reserves level.

Our restricted reserves are at their lowest level for five years, this is due to The Foundation completing or delivering a number of projects during the 2022/23 period, for example the Aviary, Future Parks Accelerator and Nature Recovery projects. We started and finished two projects during the 2022/23 financial year, Give Nature A Go and Poole Park Railway, which is why their opening and closing balances are zero as all funds raised were spent on their relevant activities. We invested in new equipment at Winton Park Café, including new outdoor furniture and a new chiller, bringing that restricted fund to a close. Furthermore, the Pilot Parks Restricted Fund is now combined with our Nature Recovery Fund, bringing that Restricted Fund to £0.

Our Trustees are confident that the projects we will continue to deliver in 2023/24 (Parks in Mind, Nature Recovery [changing project name to Green Heart Parks] and Future Parks Accelerator [changing name to Urban Greening] have sufficient forecast income to continue their delivery.

Principal funding sources

The Foundation has continued to try and diversify its income streams recognising the importance of a blended finance model to ensure its financial sustainability. However, during 2022/23 income was still primarily generated through grants from trusts and foundations (91%). This percentage is larger than previous years (69% in 2021/22) as our

trading income is no longer registered in the charity accounts. Other funding sources included donations from individuals (made online, by contactless methods and regular giving) and investments.

Investment

The Foundation's savings account is with Teachers Building Society (Charity & Community Saver 90) with an interest rate of 1.25%. £234,466.97 is held in this account. £2,084.05 of interest was received in 2022/23.

Benefactors

The Foundation is very grateful to all its supporters and donors. A number of organisations have made generous donations to specific projects they wish to support, notably:

- Future Parks: Heritage Fund, National Trust and Department for Levelling Up, Housing & Communities
- Nature Recovery Project (Green Recovery Challenge Fund): Department for Environment, Food & Rural Affairs, Heritage Fund, Environment Agency and Natural England as well as funding from the Valentine Trust, Waitrose Community Fund, Natural England plus donations from residents and event income.
- Parks in Mind: People's Health Trust and Bournemouth Towns Fund (via BCP Council).
- Park Yoga: Park Yoga charity and Christchurch Business Improvement District
- Eco Sustainable Solutions: donations of their soil, compost and chipping products throughout the year which were for the aviary and for our nature recovery project.
- The Woodland Trust and The Conservation Volunteers for donations of 4,000 trees and hedging plants.

Principle risks and uncertainties

The principle risk for The Foundation is securing our longer-term financial sustainability. As such ensuring our fundraising channels and trading activities generate sufficient unrestricted income is crucial for our future. We are also ensuring that for all projects we deliver we are building in appropriate full cost recovery models to ensure all core roles are adequately funded.

Structure, Governance and Management

Nature of Governing Document

The organisation is governed by the company's Articles and Memorandum. The company, limited by guarantee, was registered in England and Wales on 20th October 2014, and on 6th November the submission to the Charities Commission was made. The organisation was approved as a charity on 14th January 2015. A Charitable Trading Company, of which The Foundation are the sole shareholder was incorporated on 10th January 2022 and was operational from the start of this financial year.

Organisational Structure

At the 31st March 2023, The Parks Foundation had eight trustees. During 2022/23 Andy Matthews stepped down as a Trustee. Furthermore, our Honorary Treasurer, John Taylor, expressed an interest to step down from his role as Treasurer but has stayed on the Board in a Trustee capacity. Stuart Folley, an experienced Accountant and Business Adviser, has joined the Board in the Honorary Treasurer role. Jacky Thorne, our fundraising and marketing trustee has expressed an interest to step down from her role on the Board and we are currently advertising for a replacement with this skillset, as well as an additional

Trustee with impact experience. The Board would like to thank Andy, John and Jacky for their significant contribution to the charity in their role as Trustees.

The trustees meet a minimum of quarterly to provide strategic direction for the Foundation. Trustees are recruited and trained following the Charity Commission's guidance (CC30). All trustees are aware of the six main Essential Trustee duties (CC3).

Day to day operations of the Foundation is administered by the Chief Executive Officer, with responsibilities defined in a Scheme of Delegation of Authority. The Foundation currently has the equivalent of 13 full-time-equivalent staff members, this includes four part-time hourly paid contract staff members supporting trading operations.

Major risks and their management

Resources

The Foundation's core operational activities (governance, finance, fundraising, marketing, project management, volunteer management) are delivered by the Chief Executive Officer (1 FTE), Fundraising Manager (0.7FTE) and a freelance Bookkeeper. In 2023/24 we will be employing a full-time Project Officer (Communications & Fundraising) to add additional capacity to the team. Project delivery roles (Parks in Mind and Nature Recovery) are funded through grant funding. Trading roles (Kingfisher Barn and Winton Park Café) are funded through catering revenue from each site. A new Area Trading Manager and new Café Managers will be recruited for our new operations in 2023/24. Some administrative support is delivered by volunteers. Any future expansion of the charity is constrained by the Foundation's core staff's capacity to deliver more outputs as well as financial resources.

Nearly all public space assets which are key to the Foundation's charitable objects, i.e. the parks, gardens and green spaces of Bournemouth, Christchurch and Poole, are owned or managed by BCP Council. An updated Memorandum of Understanding (MoU), created by Bevan Brittan Solicitors, was signed by the Foundation and BCP Council in March 2023. Project Agreement and Grant Agreement templates have also been created, which are created for all projects we undertake.

During 2022, following an options appraisal exercise, we outsourced our IT services to AnyTech Solutions who are based in Poole. We procured new laptops, mobile phones and other IT software solutions as a result.

A lease for our office accommodation at Winton Recreation Ground is in the process of being agreed with BCP Council, which will be on a peppercorn rent. The Foundation cover all utility bills.

Funding

2022/23 was the eighth year of operation for the Foundation. Our revenue decreased by 49% from £642,569 to £330,383. This was due to our trading income (£164,979) now being accounted for in our charitable trading company, as well as us finishing the Future Parks project in November 2022, which had generated a large amount of restricted grant funding in previous years. Our 2022/23 funds have primarily been generated through grants for the Nature Recovery project (£134,105), Future Parks project (£82,557) and Parks in Mind project (£30,419), as well as public donations for our causes.

The Foundation is committed to ensuring that a high proportion of donated funds go directly to the cause, with minimum administrative overheads. In terms of covering administrative and fundraising functions, the Foundation is working to develop unrestricted income streams to cover costs, primarily through trading and fundraising. We

will continue to diversify these income streams to ensure we become a financially secure charity with the ability to employ a small number of paid staff.

Operational

Operational risks such as security and health and safety are reviewed and assessed on a regular basis by the Chief Executive Officer and are mitigated as far as possible. Any significant risks identified in our risk register are escalated to the Board of Trustees.

Plans for future periods

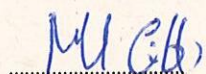
The Foundation's 2022-2025 strategy focuses on improving urban community parks for both wildlife and residents.

Aims and key objectives for future periods

- To improve BCP's community parks for people and wildlife through our Green Heart Parks project. This project will also focus on increasing the diversity of people using the Green Heart Parks through the employment of a Community Partnerships Officer. We will also be encouraging residents to green their properties, by delivering urban greening workshops (e.g. composting, water butts, wildflower meadows, wildlife ponds) with resources available for people to take back into their own homes to replicate these activities.
- To continue to grow the reputation and supporter base of the Foundation through increased marketing and project delivery.
- To increase unrestricted income to ensure that the Foundation becomes financially stable, this will be through fundraising and our trading operations. During 2022/23 we will be trialling an In Memorial pilot to test various activities of generating additional funding, if successful we will expand these pilots during 2023/24. We will also be opening two new community park cafes at Redhill Park and Boscombe Chine Gardens in May 2023.
- To further expand our Parks in Mind project in Christchurch and Poole, demonstrating the impact an ecotherapy project can have on people's mental and physical health and wellbeing.
- To develop more partnerships with conservation, community and wellbeing organisations to deliver meaningful programmes.
- To seek national support and funding for the work of the Foundation and to advocate charitable assistance for the good that public parks provide.

Approval

The annual report was approved by the trustees of the Charity on29/9/23..... and signed on its behalf by:



Mark Cribb
Chairman, Trustee

The Parks Foundation

Independent Examiner's Report to the trustees of The Parks Foundation ("the Company")

I report to the charity trustees on my examination of the accounts of the Company for the year ended 31 March 2023.

Responsibilities and basis of report

As the charity's trustees of the Company (and also its directors for the purposes of company law) you are responsible for the preparation of the accounts in accordance with the requirements of the Companies Act 2006 ('the 2006 Act').

Having satisfied myself that the accounts of The Parks Foundation are not required to be audited under Part 16 of the 2006 Act and are eligible for independent examination, I report in respect of my examination of your charity's accounts as carried out under section 145 of the Charities Act 2011 ('the 2011 Act'). In carrying out my examination I have followed the Directions given by the Charity Commission under section 145(5)(b) of the 2011 Act.


Independent examiner's statement

Since the Company's gross income exceeded £250,000 your examiner must be a member of a body listed in section 145 of the 2011 Act. I confirm that I am qualified to undertake the examination because I am a member of Association of Accounting Technicians, which is one of the listed bodies.

I have completed my examination. I confirm that no matters have come to my attention in connection with the examination giving me cause to believe:

1. accounting records were not kept in respect of The Parks Foundation as required by section 386 of the 2006 Act; or
2. the accounts do not accord with those records; or
3. the accounts do not comply with the accounting requirements of section 396 of the 2006 Act other than any requirement that the accounts give a 'true and fair view' which is not a matter considered as part of an independent examination; or
4. the accounts have not been prepared in accordance with the methods and principles of the Statement of Recommended Practice for accounting and reporting by charities [applicable to charities preparing their accounts in accordance with the Financial Reporting Standard applicable in the UK and Republic of Ireland (FRS 102)].

I have no concerns and have come across no other matters in connection with the examination to which attention should be drawn in this report in order to enable a proper understanding of the accounts to be reached.


.....
Sue Wintle
Independent examiners
Association of Accounting Technicians

27 Bascott Road
Wallisdown
Bournemouth
Dorset
BH11 8RJ

Date: 5-9-2023

The Parks Foundation

Statement of Financial Activities for the Year Ended 31 March 2023 (Including Income and Expenditure Account and Statement of Total Recognised Gains and Losses)

		Unrestricted	Restricted	Total	Total
	Note	£	£	2023	2022
				£	£
Income and Endowments from:					
Donations and legacies	3	28,447	301,936	330,383	497,018
Charitable activities		360	3,500	3,860	11,750
Other trading activities	4	5,383	-	5,383	132,864
Investment income	5	2,281	-	2,281	937
Other income		1,034	-	1,034	-
Total Income		<u>37,505</u>	<u>305,436</u>	<u>342,941</u>	<u>642,569</u>
Expenditure on:					
Charitable activities	6	<u>(84,902)</u>	<u>(523,972)</u>	<u>(608,874)</u>	<u>(888,438)</u>
Total Expenditure		<u>(84,902)</u>	<u>(523,972)</u>	<u>(608,874)</u>	<u>(888,438)</u>
Net expenditure		(47,397)	(218,536)	(265,933)	(245,869)
Transfers between funds		<u>68,247</u>	<u>(68,247)</u>	<u>-</u>	<u>-</u>
Net movement in funds		20,850	(286,783)	(265,933)	(245,869)
Reconciliation of funds					
Total funds brought forward		<u>180,121</u>	<u>364,179</u>	<u>544,300</u>	<u>790,170</u>
Total funds carried forward	17	<u>200,971</u>	<u>77,396</u>	<u>278,367</u>	<u>544,301</u>

All of the charity's activities derive from continuing operations during the above two periods.

The funds breakdown for 2022 is shown in note 17.

The Parks Foundation
(Registration number: 09272223)
Balance Sheet as at 31 March 2023


	Note	2023 £	2022 £
Fixed assets			
Tangible assets	10	10,971	4,163
Investments	11	<u>1</u>	<u>-</u>
		<u>10,972</u>	<u>4,163</u>
Current assets			
Stocks	12	-	3,729
Debtors	13	24,100	2,946
Cash at bank and in hand	14	<u>246,258</u>	<u>547,031</u>
		270,358	553,706
Creditors: Amounts falling due within one year	15	<u>(2,963)</u>	<u>(13,568)</u>
Net current assets		<u>267,395</u>	<u>540,138</u>
Net assets		<u>278,367</u>	<u>544,301</u>
Funds of the charity:			
Restricted income funds			
Restricted funds	17	77,396	364,180
Unrestricted income funds			
Unrestricted funds		<u>200,971</u>	<u>180,121</u>
Total funds	17	<u>278,367</u>	<u>544,301</u>

For the financial year ending 31 March 2023 the charity was entitled to exemption from audit under section 477 of the Companies Act 2006 relating to small companies.

Directors' responsibilities:

- The members have not required the charity to obtain an audit of its accounts for the year in question in accordance with section 476; and
- The directors acknowledge their responsibilities for complying with the requirements of the Act with respect to accounting records and the preparation of accounts.

The financial statements on pages 3 to 13 were approved by the trustees, and authorised for issue on 29/9/23 and signed on their behalf by:



 Mark Cribb
 Trustee

The Parks Foundation

Notes to the Financial Statements for the Year Ended 31 March 2023

1 Charity status

The charity is limited by guarantee, incorporated in England, and consequently does not have share capital. Each of the trustees is liable to contribute an amount not exceeding £Nil towards the assets of the charity in the event of liquidation.

The address of its registered office is:

The Cricket Pavilion
Winton Recreation Ground
Fitzharris Avenue
Bournemouth
Dorset
BH9 1BX

[Authorised for issue date](#)

2 Accounting policies

Summary of significant accounting policies and key accounting estimates

The principal accounting policies applied in the preparation of these financial statements are set out below. These policies have been consistently applied to all the years presented, unless otherwise stated.

Statement of compliance

The financial statements have been prepared in accordance with Accounting and Reporting by Charities: Statement of Recommended Practice (applicable to charities preparing their accounts in accordance with the Financial Reporting Standard applicable in the UK and Republic of Ireland (FRS 102)) (issued in October 2019) - (Charities SORP (FRS 102)), the Financial Reporting Standard applicable in the UK and Republic of Ireland (FRS 102) and the Companies Act 2006.

Basis of preparation

The Parks Foundation meets the definition of a public benefit entity under FRS 102. Assets and liabilities are initially recognised at historical cost or transaction value unless otherwise stated in the relevant accounting policy notes.

Going concern

The trustees consider that there are no material uncertainties about the charity's ability to continue as a going concern nor any significant areas of uncertainty that affect the carrying value of assets held by the charity.

Exemption from preparing a cash flow statement

The charity opted to early adopt Bulletin 1 published on 2 February 2016 and have therefore not included a cash flow statement in these financial statements.

Income and endowments

All income is recognised once the charity has entitlement to the income, it is probable that the income will be received and the amount of the income receivable can be measured reliably.

Donations and legacies

Donations represent donated funds from individuals

The Parks Foundation

Notes to the Financial Statements for the Year Ended 31 March 2023

Grants receivable

Grants are accounted for when received

Other trading activities

Trading income is from the sale of goods.

Expenditure

All expenditure is recognised once there is a legal or constructive obligation to that expenditure, it is probable settlement is required and the amount can be measured reliably. All costs are allocated to the applicable expenditure heading that aggregate similar costs to that category. Where costs cannot be directly attributed to particular headings they have been allocated on a basis consistent with the use of resources, with central staff costs allocated on the basis of time spent, and depreciation charges allocated on the portion of the asset's use. Other support costs are allocated based on the spread of staff costs.

Governance costs

These include the costs attributable to the charity's compliance with constitutional and statutory requirements, including audit, strategic management and trustees's meetings and reimbursed expenses.

Government grants

Government grants are recognised based on the accrual model and are measured at the fair value of the asset received or receivable. Grants are classified as relating either to revenue or to assets. Grants relating to revenue are recognised in income over the period in which the related costs are recognised. Grants relating to assets are recognised over the expected useful life of the asset. Where part of a grant relating to an asset is deferred, it is recognised as deferred income.

Taxation

The charity is considered to pass the tests set out in Paragraph 1 Schedule 6 of the Finance Act 2010 and therefore it meets the definition of a charitable company for UK corporation tax purposes. Accordingly, the charity is potentially exempt from taxation in respect of income or capital gains received within categories covered by Chapter 3 Part 11 of the Corporation Tax Act 2010 or Section 256 of the Taxation of Chargeable Gains Act 1992, to the extent that such income or gains are applied exclusively to charitable purposes.

Tangible fixed assets

Individual fixed assets costing £100.00 or more are initially recorded at cost.

Depreciation and amortisation

Depreciation is provided on tangible fixed assets so as to write off the cost or valuation, less any estimated residual value, over their expected useful economic life as follows:

Asset class	Depreciation method and rate
Equipment	25% straight line

The Parks Foundation

Notes to the Financial Statements for the Year Ended 31 March 2023

Fixed asset investments

Fixed asset investments, other than programme related investments, are included at market value at the balance sheet date. Realised gains and losses on investments are calculated as the difference between sales proceeds and their market value at the start of the year, or their subsequent cost, and are charged or credited to the Statement of Financial Activities in the period of disposal.

Unrealised gains and losses represent the movement in market values during the year and are credited or charged to the Statement of Financial Activities based on the market value at the year end.

Stock

Stock is valued at the lower of cost and estimated selling price less costs to complete and sell, after due regard for obsolete and slow moving stocks. Cost is determined using the first-in, first-out (FIFO).

Trade debtors

Trade debtors are amounts due from customers for merchandise sold or services performed in the ordinary course of business.

Trade debtors are recognised initially at the transaction price. They are subsequently measured at amortised cost using the effective interest method, less provision for impairment. A provision for the impairment of trade debtors is established when there is objective evidence that the charity will not be able to collect all amounts due according to the original terms of the receivables.

Trade creditors

Trade creditors are obligations to pay for goods or services that have been acquired in the ordinary course of business from suppliers. Accounts payable are classified as current liabilities if the charity does not have an unconditional right, at the end of the reporting period, to defer settlement of the creditor for at least twelve months after the reporting date. If there is an unconditional right to defer settlement for at least twelve months after the reporting date, they are presented as non-current liabilities.

Trade creditors are recognised initially at the transaction price and subsequently measured at amortised cost using the effective interest method.

Fund structure

Unrestricted income funds are general funds that are available for use at the trustees discretion in furtherance of the objectives of the charity.

Designated funds are unrestricted funds set aside for specific purposes at the discretion of the trustees.

Restricted income funds are those donated for use in a particular area or for specific purposes, the use of which is restricted to that area or purpose.

Pensions and other post retirement obligations

The charity operates a defined contribution pension scheme which is a pension plan under which fixed contributions are paid into a pension fund and the charity has no legal or constructive obligation to pay further contributions even if the fund does not hold sufficient assets to pay all employees the benefits relating to employee service in the current and prior periods.

Contributions to defined contribution plans are recognised in the Statement of Financial Activities when they are due. If contribution payments exceed the contribution due for service, the excess is recognised as a prepayment.

The Parks Foundation

Notes to the Financial Statements for the Year Ended 31 March 2023

3 Income from donations and legacies

	Unrestricted funds		Restricted funds	Total funds
	Designated £	General £	£	£
Donations and legacies;				
Donations from individuals	3,239	16,139	14,095	33,473
Gift aid reclaimed	-	2,000	939	2,939
Grants, including capital grants;				
Government grants	-	1,500	82,780	84,280
Grants from other charities	5,569	-	204,122	209,691
Total for 2023	<u>8,808</u>	<u>19,639</u>	<u>301,936</u>	<u>330,383</u>
Total for 2022	<u>2,173</u>	<u>13,351</u>	<u>481,494</u>	<u>497,018</u>

4 Income from other trading activities

	Unrestricted funds General £	Total funds £
Trading income;		
Sales of goods and services	5,383	5,383
Total for 2023	<u>5,383</u>	<u>5,383</u>
Total for 2022	<u>132,864</u>	<u>132,864</u>

5 Investment income

	Unrestricted funds General £	Total funds £
Interest receivable and similar income;		
Interest receivable on bank deposits	2,281	2,281
Total for 2023	<u>2,281</u>	<u>2,281</u>
Total for 2022	<u>937</u>	<u>937</u>

The Parks Foundation

Notes to the Financial Statements for the Year Ended 31 March 2023

6 Expenditure on charitable activities

Note	Unrestricted funds Designated £	General £	Restricted funds £	Total funds £
Enhance Bournemouth Parks & Green Spaces	266	16,346	343,333	359,945
Depreciation, amortisation and other similar costs	-	-	5,757	5,757
Staff costs	-	67,640	174,882	242,522
Governance costs	-	650	-	650
Total for 2023	<u>266</u>	<u>84,636</u>	<u>523,972</u>	<u>608,874</u>
Total for 2022	<u>618</u>	<u>159,627</u>	<u>728,193</u>	<u>888,438</u>

In addition to the expenditure analysed above, there are also governance costs of £650 (2022 - £Nil) which relate directly to charitable activities. See note for further details.

7 Trustees remuneration and expenses

During the year the charity made the following transactions with trustees:

Mark Holloway

Mark's brother Peter Holloway is employed as a project manager, he received remuneration during 2022/23 of £20,398 (£22,291 in 2021/22)

No trustees have received any reimbursed expenses or any other benefits from the charity during the year.

8 Staff costs

The aggregate payroll costs were as follows:

	2023 £	2022 £
Staff costs during the year were:		
Wages and salaries	217,656	240,072
Social security costs	16,505	15,127
Pension costs	8,361	8,248
	<u>242,522</u>	<u>263,447</u>

The Parks Foundation

Notes to the Financial Statements for the Year Ended 31 March 2023

The monthly average number of persons (including senior management / leadership team) employed by the charity during the year expressed as full time equivalents was as follows:

	2023	2022
	No	No
Average number of employees	<u>13</u>	<u>13</u>

No employee received emoluments of more than £60,000 during the year.

9 Taxation

The charity is a registered charity and is therefore exempt from taxation.

10 Tangible fixed assets

	Furniture and equipment £	Total £
Cost		
At 1 April 2022	19,470	19,470
Additions	14,628	14,628
Disposals	<u>(4,773)</u>	<u>(4,773)</u>
At 31 March 2023	<u>29,325</u>	<u>29,325</u>
Depreciation		
At 1 April 2022	15,307	15,307
Charge for the year	5,757	5,757
Eliminated on disposals	<u>(2,710)</u>	<u>(2,710)</u>
At 31 March 2023	<u>18,354</u>	<u>18,354</u>
Net book value		
At 31 March 2023	<u>10,971</u>	<u>10,971</u>
At 31 March 2022	<u>4,163</u>	<u>4,163</u>

The Parks Foundation

Notes to the Financial Statements for the Year Ended 31 March 2023

11 Fixed asset investments

	2023 £
Other investments	<u>1</u>

Other investments

	Unlisted investments £	Total £
Cost or Valuation		
Additions	<u>1</u>	<u>1</u>
At 31 March 2023	<u>1</u>	<u>1</u>
Net book value		
At 31 March 2023	<u>1</u>	<u>1</u>

12 Stock

	2023 £	2022 £
Stocks	<u>-</u>	<u>3,729</u>

13 Debtors

	2023 £	2022 £
Trade debtors	24,100	1,738
Prepayments	-	970
Accrued income	<u>-</u>	<u>238</u>
	<u>24,100</u>	<u>2,946</u>

14 Cash and cash equivalents

	2023 £	2022 £
Cash at bank	<u>246,258</u>	<u>547,031</u>

15 Creditors: amounts falling due within one year

	2023 £	2022 £
Trade creditors	-	8,371
Other taxation and social security	3	3
Other creditors	2,960	4,509
Accruals	<u>-</u>	<u>685</u>
	<u>2,963</u>	<u>13,568</u>

The Parks Foundation

Notes to the Financial Statements for the Year Ended 31 March 2023

16 Pension and other schemes

Defined contribution pension scheme

The charity operates a defined contribution pension scheme. The pension cost charge for the year represents contributions payable by the charity to the scheme and amounted to £8,362 (2022 - £8,249).

17 Funds

	Balance at 1 April 2022 £	Incoming resources £	Resources expended £	Transfers £	Balance at 31 March 2023 £
Unrestricted funds					
<i>General</i>					
General	175,430	28,698	(84,638)	68,765	188,255
<i>Designated</i>					
Hengistbury Head					
Roundhouse	1,318	930	-	(27)	2,221
Wildlife Camera	2,155	767	-	(113)	2,809
Poole Park	885	287	-	(43)	1,129
Dogdrink	333	-	-	(333)	-
Kingfisher Barn	-	5,569	(266)	-	5,303
Canford Heath Fire	-	1,254	-	-	1,254
	<u>4,691</u>	<u>8,807</u>	<u>(266)</u>	<u>(516)</u>	<u>12,716</u>
Total unrestricted funds	<u>180,121</u>	<u>37,505</u>	<u>(84,904)</u>	<u>68,249</u>	<u>200,971</u>
Restricted funds					
Aviary	69,237	5,068	(45,675)	(20,382)	8,248
Parks in Mind	4,285	30,419	(31,029)	(2,400)	1,275
Future Parks (Urban Greening)	157,221	82,557	(185,792)	(23,421)	30,565
Contactless Donations Trial	21,779	-	(3,244)	(5,000)	13,535
Nature Recovery Project (Incl Climate Change)	88,567	134,105	(205,063)	5,663	23,272
Winton Cafe Equipment	4,874	-	-	(4,874)	-
Play Parks	13,410	-	-	(13,410)	-
Pilot Parks	4,390	34	-	(4,424)	-
Park Yoga	417	2,839	(2,754)	-	502
Poole Park Railway	-	50,000	(50,000)	-	-
Give Nature A Go	-	415	(415)	-	-
	<u>364,180</u>	<u>305,437</u>	<u>(523,972)</u>	<u>(68,248)</u>	<u>77,397</u>
Total restricted funds	<u>364,180</u>	<u>305,437</u>	<u>(523,972)</u>	<u>(68,248)</u>	<u>77,397</u>
Total funds	<u>544,301</u>	<u>342,942</u>	<u>(608,876)</u>	<u>1</u>	<u>278,368</u>

The Parks Foundation

Notes to the Financial Statements for the Year Ended 31 March 2023

The specific purposes for which the funds are to be applied are as follows:

Contactless donation trial – The Heritage Fund

Future Parks Accelerator – The Heritage Fund, National Trust & Department for Levelling Up, Housing & Communities

Nature Recovery project – This project is funded by the Government's Green Recovery Challenge Fund. The fund was developed by Defra and its Arm's-Length Bodies. It is being delivered by The National Lottery Heritage Fund in partnership with Natural England, the Environment Agency and Forestry Commission. Funding was also recieved from the Valentine Trust, Waitrose Community Fund, Natural England plus donations from residents and event income.

Parks in Mind – People's Health Trust, Bournemouth Towns Fund.

18 Analysis of net assets between funds

	Unrestricted funds		Restricted funds	Total funds at 31 March 2023
	General	Designated		
	£	£	£	£
Tangible fixed assets	10,971	-	-	10,971
Fixed asset investments	1	-	-	1
Current assets	180,245	12,716	77,397	270,358
Current liabilities	(2,963)	-	-	(2,963)
Total net assets	<u>188,254</u>	<u>12,716</u>	<u>77,397</u>	<u>278,367</u>

	Unrestricted funds		Restricted funds	Total funds at 31 March 2022
	General	Designated		
	£	£	£	£
Tangible fixed assets	4,163	-	-	4,163
Current assets	184,836	4,691	364,179	553,706
Current liabilities	(13,568)	-	-	(13,568)
Total net assets	<u>175,431</u>	<u>4,691</u>	<u>364,179</u>	<u>544,301</u>

The Parks Foundation

Statement of Financial Activities by fund for the Year Ended 31 March 2023

Unrestricted Funds

	Total Unrestricted Funds 2023 £	Total Unrestricted Funds 2022 £
Income and Endowments from:		
Donations and legacies	28,447	15,524
Charitable activities	360	8,987
Other trading activities	5,383	132,864
Investment income	2,281	937
Other income	1,034	-
Total income	<u>37,505</u>	<u>158,312</u>
Expenditure on:		
Charitable activities	<u>(84,902)</u>	<u>(160,245)</u>
Total expenditure	<u>(84,902)</u>	<u>(160,245)</u>
Net expenditure	(47,397)	(1,933)
Transfers between funds	<u>68,247</u>	<u>61,193</u>
Net movement in funds	20,850	59,260
Reconciliation of funds		
Total funds brought forward	<u>180,121</u>	<u>120,861</u>
Total funds carried forward	<u><u>200,971</u></u>	<u><u>180,121</u></u>

The Parks Foundation

Statement of Financial Activities by fund for the Year Ended 31 March 2023

Restricted Funds

	Total Restricted Funds 2023 £	Total Restricted Funds 2022 £
Income and Endowments from:		
Donations and legacies	301,936	481,494
Charitable activities	<u>3,500</u>	<u>2,763</u>
Total income	<u>305,436</u>	<u>484,257</u>
Expenditure on:		
Charitable activities	<u>(523,972)</u>	<u>(728,193)</u>
Total expenditure	<u>(523,972)</u>	<u>(728,193)</u>
Net expenditure	(218,536)	(243,936)
Transfers between funds	<u>(68,247)</u>	<u>(61,193)</u>
Net movement in funds	(286,783)	(305,129)
Reconciliation of funds		
Total funds brought forward	<u>364,179</u>	<u>669,309</u>
Total funds carried forward	<u><u>77,396</u></u>	<u><u>364,180</u></u>