

**REPORT OF THE TRUSTEES AND  
UNAUDITED FINANCIAL STATEMENTS FOR THE YEAR ENDED 30 APRIL 2025  
FOR  
TYNESIDE VINEYARD**

## **TYNESIDE VINEYARD**

### **CONTENTS OF THE FINANCIAL STATEMENTS FOR THE YEAR ENDED 30 APRIL 2025**

	<b>Page</b>
<b>Reference and Administrative Details</b>	1
<b>Report of the Trustees</b>	2 to 22
<b>Independent Examiner's Report</b>	23
<b>Statement of Financial Activities</b>	24
<b>Balance Sheet</b>	25
<b>Notes to the Financial Statements</b>	26 to 34

## **TYNESIDE VINEYARD**

### **REFERENCE AND ADMINISTRATIVE DETAILS FOR THE YEAR ENDED 30 APRIL 2025**

**Charity name**

Tyneside Vineyard

**Other name used by the Charity**

Life Vineyard Church

**Registered Charity number**

1159859

**Principal address**

The Allen, The Green, Wallsend, NE28 7NP

**Trustees**

Dr D Bass

Mr A Gilbert

Mr F Hindle

Mr A Patton

Mr A McMurray

Ms F Awotona

**Independent Examiner**

Nicholas J Liley, BK Plus Limited, 13 Windsor Terrace, Jesmond, Newcastle upon Tyne, NE2 4HE

**Bankers**

Barclays Bank plc, 215 High Street, Gateshead, NE8 1BX

## **TYNESIDE VINEYARD**

### **REPORT OF THE TRUSTEES FOR THE YEAR ENDED 30 APRIL 2025**

The trustees present their report with the financial statements of the charity for the year ended 30 April 2025.

The trustees have adopted the provisions of Accounting and Reporting by Charities: Statement of Recommended Practice applicable to charities preparing their accounts in accordance with the Financial

Reporting Standard applicable in the UK and Republic of Ireland (FRS 102) (effective 1 January 2019).

### **OBJECTIVES AND ACTIVITIES**

#### **Objectives**

The objects of the CIO are:

(A) To advance the Christian Faith for the benefit of the public in accordance with the Statement of Beliefs in such ways and in such parts of Tyneside, the United Kingdom or the World as the trustees from time to time may think fit.

(B) To relieve sickness and financial hardship and to promote and preserve good health by the provision of funds, goods or services of any kind, including through the provision of counselling and support in such parts of Tyneside, the United Kingdom or the World as the trustees from time to time may think fit.

(C) To promote the benefit of the inhabitants of Tyneside, Wearside, Northumberland and County Durham in the areas of community cohesion, health, education, recreation and leisure. To provide facilities in the interests of the above with the object of improving the conditions of life of the said inhabitants.

#### **Public benefit**

The trustees have paid due regard to guidance issued by the Charity Commission in deciding what activities the charity should undertake. The trustees have complied with their duty in Section 17 of the Charities Act 2011 and have paid due regard to guidance published by the Charity Commission regarding public benefit.

### **FINANCIAL REVIEW**

#### **Financial position**

The charity reported total incoming resources of £445,438 (2024 - £508,891) of which £22,885 (2024 - £47,837) was subject to restriction; resources expended amounted to £435,683 (2024 - £532,528) of

## **TYNESIDE VINEYARD**

### **REPORT OF THE TRUSTEES FOR THE YEAR ENDED 30 APRIL 2025**

which £22,885 (2024 - £47,837) was subject to restriction resulting in an overall net surplus of £9,755 (2024 - deficit of £23,637).

At the balance sheet date, total funds amounted to £290,591 (2024 - £280,836), none of which was subject to restriction. The free reserves of the charity amounted to £51,683 (2024 - £42,944).

#### **Reserves policy**

In 2023-24 we reviewed our reserve policy and decided to move to a simpler model of a target of 2 months full expenditure. Trustees agreed that 3 months full expenditure would be the maximum reserve unless we were planning for a known larger expenditure or investment.

We also assessed that a minimum reserve would be £30,000 which enabled for everyday activities to continue unhindered. Should the church run a continued monthly deficit that was projected to take the cash in hand and debtors balance below the two months full expenditure then the trustees would assess what interventions would be required.

This year our end of year balance of cash in hand and debtors was £63,485. This is slightly below the target of £68,800 (two months full unrestricted expenditure).

#### **STRUCTURE, GOVERNANCE AND MANAGEMENT**

##### **Governing document**

The charity is controlled by its governing document, a constitution and constitutes a charitable incorporated organisation.

##### **Recruitment and appointment of new trustees**

Trustees periodically review if there is a need for new trustees, taking into the skills, abilities and capacities of current trustees and the requirements of the charity.

In accordance with our constitution, new trustees are nominated by the church's spiritual leadership (the senior pastors) and appointed by decision of the current trustees.

Trustees are appointed for a five year term and may be re-appointed at the end of a term by decision of the remaining trustees.

Where practicable new trustees are recruited from existing volunteer leaders within the church. Trustees will suggest potential appointees who will be contacted by the chair/senior pastor to discuss the role and their suitability, willingness and availability to become a trustee. The chair/senior pastor reports back to the other trustees and nominates individuals for consideration at a trustees' meeting.

If there is a need for expertise that cannot be met from within Tyneside Vineyard, then trustees would look, in the first instance, to find suitable person(s) from within other churches affiliated to Vineyard Churches UK and Ireland.

## **TYNESIDE VINEYARD**

### **REPORT OF THE TRUSTEES FOR THE YEAR ENDED 30 APRIL 2025**

#### **Organisational structure**

Trustees are responsible for the governance and overall management of the charity. They agree an annual budget, changes to staffing establishment, and key policies but implementation and day to day running is delegated to the Senior Pastors who in turn may delegate responsibility to other members of staff and volunteers.

At present trustee decisions (except annual review of Senior Pastor performance and remuneration) are made collectively by all trustees (in a physical meeting or electronically in accordance with the constitution) and there is no formal delegation to individual trustees or trustee sub-groups, but this is kept under review as the charity grows in size and complexity. Individual trustees may be asked, based on their expertise and background, to monitor or develop particular areas of activity, typically in conjunction with a senior pastor or other senior member of staff and to bring any related proposals for change to the board of trustees.

Annual review of Senior Pastor performance and remuneration is delegated to a sub-group of trustees, determined by the Trustees, but excluding any employee(s).

#### **Induction and training of new trustees**

New trustees are given a copy of the constitution, the latest annual report and accounts, the current budget plan and recent trustee minutes. They are advised of publications and documents for trustees available from The Charity Commission, and from Vineyard Churches UK and Ireland.

They are welcomed to their first meeting and introduced to any trustees who they do not know and encouraged to take a full part in discussions.

The Chair/Senior Pastor will meet with new trustees between trustee meetings to help ensure they have an understanding of any issues and to address any concerns or questions.

#### **Key management remuneration**

Senior Pastor remuneration has been determined by trustees (excluding any employee) taking into account the responsibilities of the role and remuneration offered by other churches and similar sized charities. Changes are determined by a subgroup of the non-employee trustees (typically two) each year following an annual review of performance and in accordance with the general policy on pay changes for all staff agreed by trustees.

Trustees have agreed a set of grade descriptors with associated pay ranges for other employees, which is reviewed annually, taking into account pay changes in the wider economy. Trustees (excluding any employees or connected persons) agree a general policy for pay changes each year, taking into account the needs and budget of the charity as well as pay changes in the wider economy. Following employee's annual performance reviews, any annual changes to each individual employee's pay is determined by senior pastor(s) in consultation with a delegated trustee and in accordance with the general policy agreed by trustees.

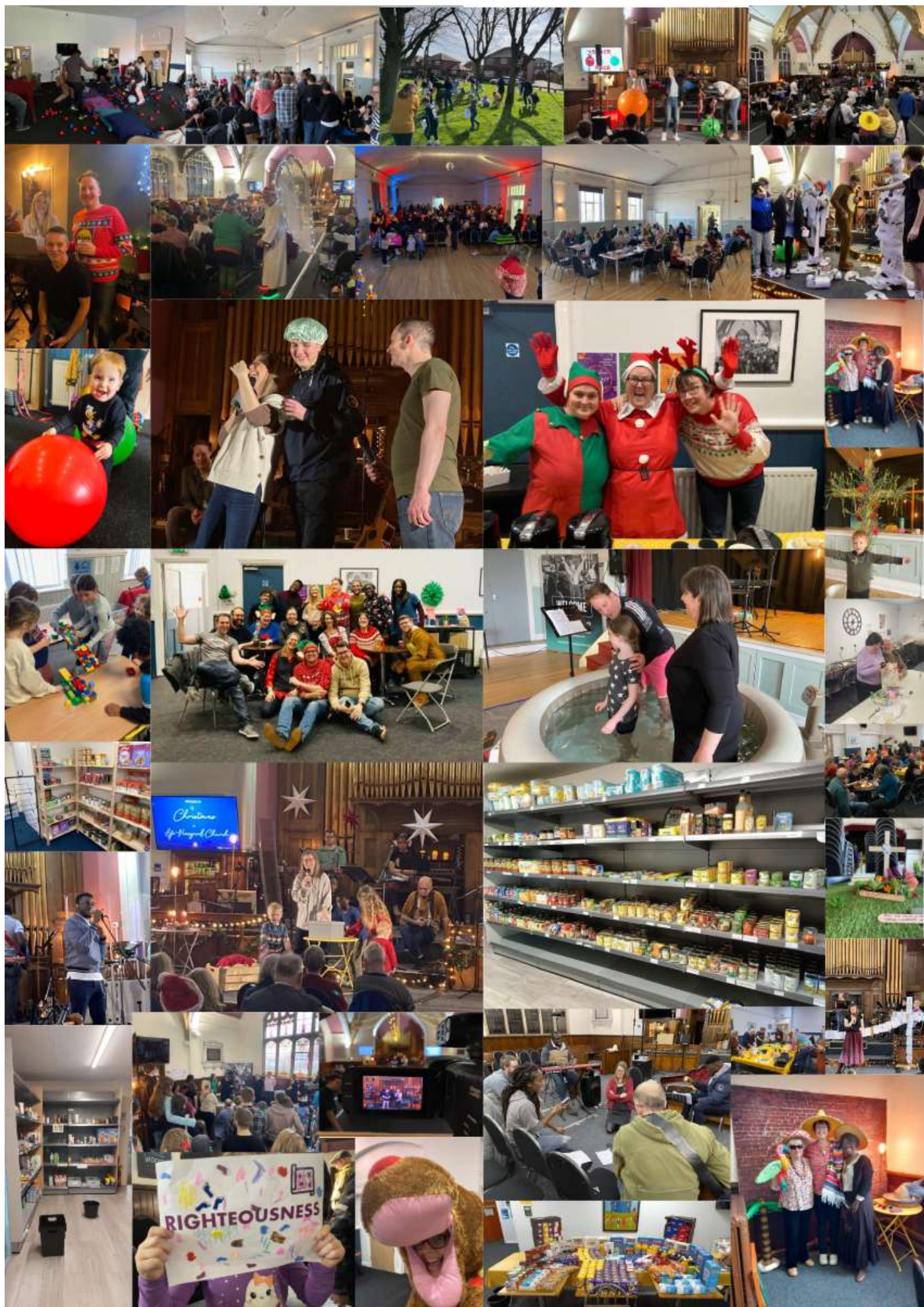


life

# Annual Report

## 2024/2025 LIFE VINEYARD CHURCH







# INTRODUCTION

What an amazing 12 months, God has been building His church and we have been looking to join in with what He is doing in and through LVC.

We have seen lots of people calling LVC home, we have planted a church in South Shields and so much more...

Our Life Projects have been going from strength to strength with new pantry locations and growing a number of people accessing the support they need.

Our kids and youth ministries are growing and thriving, with our youth service 'The Hub' giving space for our 12-18's to gather, have fun and build community.

Thank you so much to everyone who served, gave, prayed and contributed to all this and more!

God Bless

David & Nicola Bass  
(Senior Pastors)



# EXPLORE

*"We have a passion to see people meet Jesus for the first time."*

## Evangelism & Outreach



**Around 325 people** come to our compassion and outreach projects every week. That's over **16,000 community connections** in the last 12 months

*"This gives us an incredible opportunity to demonstrate and communicate the gospel."*

## Alpha Courses

Over the next 12 months we have a goal to run an Alpha Course every term. Hopefully at both our sites.

***Who will you invite?***





# CONNECT

## Improvements



Thanks once again to the generosity of LVC members we have been able to **improve the experience of first time visitors** to both Wallsend and Marley Hill sites. There's more to come...

## Newcomers Meal & Vineyard 101

**44 people** attended a Newcomers Meal in the last 12 months and **28 people** attended Vineyard 101 in 2025.

# CONNECT

## Life Kids and Youth

*"We want our young people to never know a day when Jesus isn't at the center of their life"*

**187 kids and youth** currently find a home at Life Vineyard Church.



### Launching Sep 2025...

Thanks to the the generosity of LVC members we have been able to invest in an exciting new kids and youth curriculum that families can also access at home.





# CONNECT

## Improvements



Thanks once again to the generosity of LVC members we have been able to **improve the experience of first time visitors** to both Wallsend and Marley Hill sites.

**There's more to come...**

## Newcomers Meal & Vineyard 101

**44 people** attended a Newcomers Meal in the last 12 months and **28 people** attended Vineyard 101 in 2025.





# BELONG

*"We want everyone to find a place to call home at LVC."*

## Life Groups

We currently have **11 Life Groups** that meet regularly across the week. **104 people** are currently in a Life Group at LVC, that's **35%** of all adults at LVC.

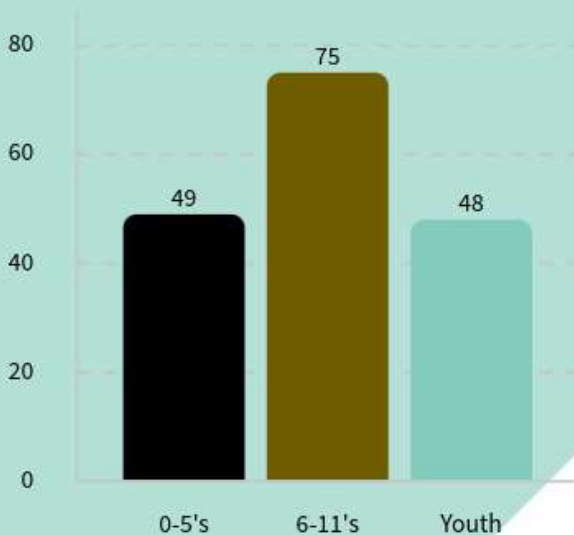
We want to start new Life Groups and see many more members of LVC being known and knowing others as a member of a Life Group. **Join NOW** using this QR code....





# BELONG

## Life Kids and Youth



Life Kids and Life Youth continue to go from strength to strength. Over the last 18 months on average we have seen **63 young people** attending a Sunday service.



***"we want to raise a generation who know Jesus and worship Him every day of their lives"***

This year we saw a **record 22** of our young people, attending DTI youth festival.



# BRING LIFE

## Affordable Food Projects

We currently run affordable food projects (Pantries) in **8 locations** in partnership with five churches and Percy Main Primary School.

**>9000 people**  
supported over the last  
12 months.

**> £50,000 saved** by  
members over the last  
12 months.

**>100,000 items**  
provided over the last  
12 months.

On average **£13.75**  
saved each month by a  
an individual member.



### ***Mother of 4 in Benwell***

*"A lovely friendly pantry with very welcoming volunteers. Great value food which has been a massive help over the last 2 years. Myself and my mother-in-law pop in every Thursday for coffee, cake and catch up."*



# BRING LIFE

*Jesus said: "I have come that they may have life, and have it to the full."*

## The Lamp and Hot Meals



**> 2500 community connections** in the last 12 months at The Lamp Cafe at Marley Hill.

The Lamp is a pay what you can cafe at Marley Hill. It is a wonderful place of community and friendship.

**> 1200 hot meals** provided for free in Wallsend in the last 12 months. **25 people** attending most weeks.



*"The atmosphere in and around the Pantry is joyous with lots of smiling faces. Then from 12pm to 1pm there is a free lunch. I'm so grateful as I don't need to worry on a Friday what I'll have to eat that day."*



# BRING LIFE

## Noah's Ark Toddler Groups

We run a vibrant Noah's Ark toddlers group at both our Marley Hill (Friday) and Wallsend (Monday) sites.

**Around 4000 community connections** across both toddler groups in the last 12 months.



## **CAP Job Club - Coming Soon...**

We have been invited to partner with Christians Against Poverty to run a Job Club at the Byker Pantry. **If you would like to train to be a volunteer 'Job Coach' please let the church office know... ([office@lifevineyard.church](mailto:office@lifevineyard.church))**

# BRING LIFE

*To lead people into life requires everyone at LVC to play their part.*



**118 (40%)** members of LVC serve on at least one team.



We would love everyone who calls Life Vineyard Church home to serve on a team. Just imagine the difference another 100 people serving would make!



*Scan the QR to join a team today and play your part...*





# **GROW**

## **Spiritual Growth Plan**

In September 2025, we will be launching our Spiritual Growth Plan (SPG) initiative. We are passionate about seeing people grow in their faith and relationship with Jesus. With the SPG, you complete an online survey and then have 2 to 4 meetings with a Spiritual Growth Guide.

The aim is to help each person discover their unique growth areas and take their next steps in spiritual growth.

## **Leadership Development**

At Life Vineyard Church, we believe developing leaders is vital to the health and growth of our church. We invest in leaders through Wider Leaders' Meetings, our Leaders Day Conference (Nov 2025), the Leaders Retreat, and, from 2026, a new Leaders Mentoring Initiative.

We are blessed to have amazing leaders serving across every aspect of church life and always looking to develop new leaders.

## **Vineyard Movement**

Alongside our training and development at LVC, we are also blessed with an amazing range of conferences and events across the national Vineyard Movement.



**College**

Vineyard Leadership College



# GROW

## Church Planting



Back in September 2024 we had the privilege of commission Mike and Jo Sutton to plant Beacon Vineyard. This was LVC's second church plant after Darlington Vineyard in 2017.

In the first year they have grown to **45 adults and kids.**

*"We have loved seeing the lives of people changed as they encounter God in new ways. Two highlights: We have baptised five people at different stages of faith and it's been exciting to see them make their commitments to the Lord. Our kids and families ministry has really grown and developed and we have loved seeing our kids grow and thrive in their faith."*



Scan QR to  
find out  
more



A large teal geometric shape, resembling a stylized arrow or a corner of a square, pointing towards the top right. It serves as a background for the 'THANK YOU' text.

# **THANK YOU**



**[WWW.LIFEVINEYARD.CHURCH](http://WWW.LIFEVINEYARD.CHURCH)**



## **TYNESIDE VINEYARD**

### **REPORT OF THE TRUSTEES FOR THE YEAR ENDED 30 APRIL 2025**

#### **STATEMENT OF TRUSTEES' RESPONSIBILITIES**

The trustees are responsible for preparing the Report of the Trustees and the financial statements in accordance with applicable law and United Kingdom Accounting Standards (United Kingdom Generally Accepted Accounting Practice).

Charity law requires the trustees to prepare financial statements for each financial year. Under that law, the trustees have elected to prepare the financial statements in accordance with United Kingdom Generally Accepted Accounting Practice (United Kingdom Accounting Standards and applicable law).

Under charity law the trustees must not approve the financial statements unless they are satisfied that they give a true and fair view of the state of affairs of the charity and of the incoming resources and application of resources, including the income and expenditure, of the charity for that period. In preparing those financial statements, the trustees are required to

- select suitable accounting policies and then apply them consistently;
- observe the methods and principles in the Charities SORP;
- make judgements and estimates that are reasonable and prudent;
- prepare the financial statements on the going concern basis unless it is inappropriate to presume that the charity will continue in business.

The trustees are responsible for keeping proper accounting records which disclose with reasonable accuracy at any time the financial position of the charity and to enable them to ensure that the financial statements comply with the Charities Act 2011, The Charity (Accounts and Reports) Regulations 2008 and the provisions of the charity's constitution. They are also responsible for safeguarding the assets of the charity and hence for taking reasonable steps for the prevention and detection of fraud and other irregularities.

Approved by order of the board of trustees on 24 February 2026 and signed on its behalf by:



Dr D Bass - Trustee

## **INDEPENDENT EXAMINER'S REPORT TO THE TRUSTEES OF TYNESIDE VINEYARD**

### **Independent examiner's report to the trustees of Tyneside Vineyard**

I report to the charity trustees on my examination of the accounts of Tyneside Vineyard (the Trust) for the year ended 30 April 2025.

### **Responsibilities and basis of report**

As the charity trustees of the Trust you are responsible for the preparation of the accounts in accordance with the requirements of the Charities Act 2011 ('the Act').

I report in respect of my examination of the Trust's accounts carried out under Section 145 of the Act and in carrying out my examination I have followed all applicable Directions given by the Charity Commission under Section 145(5)(b) of the Act.

### **Independent examiner's statement**

Since your charity's gross income exceeded £250,000 your examiner must be a member of a listed body. I can confirm that I am qualified to undertake the examination because I am a member of the Institute of Chartered Accountants in England and Wales, which is one of the listed bodies.

I have completed my examination. I confirm that no material matters have come to my attention in connection with the examination giving me cause to believe that in any material respect:

1. accounting records were not kept in respect of the Trust as required by Section 130 of the Act; or
2. the accounts do not accord with those records; or
3. the accounts do not comply with the applicable requirements concerning the form and content of accounts set out in the Charities (Accounts and Reports) Regulations 2008 other than any requirement that the accounts give a true and fair view which is not a matter considered as part of an independent examination.

I have no concerns and have come across no other matters in connection with the examination to which attention should be drawn in this report in order to enable a proper understanding of the accounts to be reached.



Nicholas J Liley  
The Institute of Chartered Accountants in England and Wales

BK Plus Limited  
Chartered Certified Accountants  
13 Windsor Terrace  
Jesmond  
Newcastle upon Tyne  
NE2 4HE

25 February 2026

# TYNESIDE VINEYARD

## STATEMENT OF FINANCIAL ACTIVITIES FOR THE YEAR ENDED 30 APRIL 2025

	Notes	Unrestricted funds £	Restricted funds £	2025 Total funds £	2024 Total funds £
<b>INCOME AND ENDOWMENTS FROM</b>					
Donations and legacies		310,620	-	310,620	314,758
<b>Charitable activities</b>	4				
Charitable Activities		3,736	22,885	26,621	65,697
Investment income	3	11	-	11	183
Other income		<u>108,186</u>	<u>-</u>	<u>108,186</u>	<u>128,253</u>
<b>Total</b>		<u>422,553</u>	<u>22,885</u>	<u>445,438</u>	<u>508,891</u>
<b>EXPENDITURE ON</b>					
<b>Charitable activities</b>	5				
Charitable Activities		<u>412,798</u>	<u>22,885</u>	<u>435,683</u>	<u>532,528</u>
<b>NET INCOME/(EXPENDITURE)</b>		9,755	-	9,755	(23,637)
<b>RECONCILIATION OF FUNDS</b>					
Total funds brought forward		<u>280,836</u>	<u>-</u>	<u>280,836</u>	<u>304,473</u>
<b>TOTAL FUNDS CARRIED FORWARD</b>		<u>290,591</u>	<u>-</u>	<u>290,591</u>	<u>280,836</u>

The notes form part of these financial statements

# TYNESIDE VINEYARD

## BALANCE SHEET 30 APRIL 2025

	Notes	2025 £	2024 £
<b>FIXED ASSETS</b>			
Tangible assets	10	478,640	480,663
<b>CURRENT ASSETS</b>			
Debtors	11	3,647	8,489
Cash at bank and in hand		<u>59,838</u>	<u>45,314</u>
		63,485	53,803
<b>CREDITORS</b>			
Amounts falling due within one year	12	(15,041)	(13,898)
<b>NET CURRENT ASSETS</b>		<u>48,444</u>	<u>39,905</u>
<b>TOTAL ASSETS LESS CURRENT LIABILITIES</b>		527,084	520,568
<b>CREDITORS</b>			
Amounts falling due after more than one year	13	(236,493)	(239,732)
<b>NET ASSETS</b>		<u>290,591</u>	<u>280,836</u>
<b>FUNDS</b>	17		
Unrestricted funds		<u>290,591</u>	<u>280,836</u>
<b>TOTAL FUNDS</b>		<u>290,591</u>	<u>280,836</u>

The financial statements were approved by the Board of Trustees and authorised for issue on 24 February 2026 and were signed on its behalf by:



D Bass - Trustee



F Hindle - Trustee

The notes form part of these financial statements

## **TYNESIDE VINEYARD**

### **NOTES TO THE FINANCIAL STATEMENTS FOR THE YEAR ENDED 30 APRIL 2025**

#### **1. STATUTORY INFORMATION**

Tyneside Vineyard is a charitable incorporated organisation, registered in England and Wales and has no share capital. The CIO's registered number and registered office address can be found within Reference and Administrative Details.

#### **2. ACCOUNTING POLICIES**

##### **Basis of preparing the financial statements**

The financial statements of the charity, which is a public benefit entity under FRS 102, have been prepared in accordance with the Charities SORP (FRS 102) 'Accounting and Reporting by Charities: Statement of Recommended Practice applicable to charities preparing their accounts in accordance with the Financial Reporting Standard applicable in the UK and Republic of Ireland (FRS 102) (effective 1 January 2019)', Financial Reporting Standard 102 'The Financial Reporting Standard applicable in the UK and Republic of Ireland' and the Charities Act 2011. The financial statements have been prepared under the historical cost convention, as modified by the revaluation of certain assets.

The presentation currency of the financial statements is the Pound Sterling (£).

##### **Going concern**

The trustees are of the view that there are no material uncertainties regarding the charity's ability to continue and as such the accounts have been prepared on the going concern basis.

##### **Income**

All income is recognised in the Statement of Financial Activities once the charity has entitlement to the funds, it is probable that the income will be received and the amount can be measured reliably.

##### **Expenditure**

Liabilities are recognised as expenditure as soon as there is a legal or constructive obligation committing the charity to that expenditure, it is probable that a transfer of economic benefits will be required in settlement and the amount of the obligation can be measured reliably. Expenditure is accounted for on an accruals basis and has been classified under headings that aggregate all cost related to the category. Where costs cannot be directly attributed to particular headings they have been allocated to activities on a basis consistent with the use of resources.

##### **Tangible fixed assets**

Depreciation is provided at the following annual rates in order to write off each asset over its estimated useful life.

Freehold property	-	not provided
Musical and stage equipment	-	33% on cost and 20% on cost
Furniture and fixtures	-	20% on cost
Computer equipment	-	20% on cost

##### **Taxation**

The charity is exempt from tax on its charitable activities.



**NOTES TO THE FINANCIAL STATEMENTS - continued  
FOR THE YEAR ENDED 30 APRIL 2025**

**2. ACCOUNTING POLICIES - continued**

**Fund accounting**

Unrestricted funds can be used in accordance with the charitable objectives at the discretion of the trustees.

Restricted funds can only be used for particular restricted purposes within the objects of the charity. Restrictions arise when specified by the donor or when funds are raised for particular restricted purposes.

Further explanation of the nature and purpose of each fund is included in the notes to the financial statements.

**Pension costs and other post-retirement benefits**

The charity operates a defined contribution pension scheme. Contributions payable to the charity's pension scheme are charged to the Statement of Financial Activities in the period to which they relate.

**Cash at bank and in hand**

Cash at bank and in hand includes cash and short term highly liquid investments.

**Creditors**

Creditors are recognised where the charity has a present obligation resulting from a past event that will probably result in the transfer of funds to a third party and the amount due to settle the obligation can be measured or estimated reliably. Creditors are recognised at their settlement amount nett of any trade discounts.

**Financial instruments**

All financial assets and financial liabilities of the charity qualify as basic financial instruments. Basic financial instruments are initially recognised at transaction value and subsequently measured at their settlement value.

**3. INVESTMENT INCOME**

	2025	2024
	£	£
Bank interest receivable	<u>11</u>	<u>183</u>

# **TYNESIDE VINEYARD**

## **NOTES TO THE FINANCIAL STATEMENTS - continued FOR THE YEAR ENDED 30 APRIL 2025**

### **4. INCOME FROM CHARITABLE ACTIVITIES**

		2025 £	2024 £
Grants	Activity Charitable Activities	<u>26,621</u>	<u>65,697</u>

Grants received, included in the above, are as follows:

	2025 £	2024 £
Vineyard Church Area Grant	3,736	2,466
Government and Local Authority grants	7,215	24,200
Other grants	<u>15,670</u>	<u>39,031</u>
	<u>26,621</u>	<u>65,697</u>

### **5. CHARITABLE ACTIVITIES COSTS**

	Direct Costs £	Support costs (see note 6) £	Totals £
Charitable Activities	<u>83,939</u>	<u>351,744</u>	<u>435,683</u>

### **6. SUPPORT COSTS**

	Mgmt and admin £
Charitable Activities	<u>351,744</u>

The following is included within Governance costs

	2025 £	2024 £
Independent Examiner's remuneration (including irrecoverable VAT)	<u>1,452</u>	<u>1,380</u>

**NOTES TO THE FINANCIAL STATEMENTS - continued  
FOR THE YEAR ENDED 30 APRIL 2025**

**7. TRUSTEES' REMUNERATION AND BENEFITS**

Aggregate remuneration and benefits for trustees and connected persons was as follows:

	2025	2024
	£	£
Wages and salaries	77,392	69,821
Social security costs	4,655	5,138
Other pension costs	<u>6,253</u>	<u>5,800</u>
	<u>88,300</u>	<u>80,759</u>

Dr David Bass and Nicola Bass received remuneration in connection with their roles as religious pastors. The charity is permitted to remunerate a charity trustee or connected person under the conditions set out in clause 2(g) of the charity's constitution.

Lucy Gilbert, the spouse of Adam Gilbert, received remuneration in connection with her role as Finance Administrator under consent of the Charity Commission.

**Trustees' expenses**

There were no trustees' expenses paid for the year ended 30 April 2025 nor for the year ended 30 April 2024.

**8. STAFF COSTS**

	2025	2024
	£	£
Wages and salaries	194,019	236,864
Social security costs	11,463	13,729
Other pension costs	<u>14,905</u>	<u>19,000</u>
	<u>220,387</u>	<u>269,593</u>

The average monthly number of employees during the year was as follows:

	2025	2024
	<u>11</u>	<u>12</u>
Engaged on charitable activities		

No employees received emoluments in excess of £60,000.

NOTES TO THE FINANCIAL STATEMENTS - continued  
FOR THE YEAR ENDED 30 APRIL 2025

9. COMPARATIVES FOR THE STATEMENT OF FINANCIAL ACTIVITIES

	Unrestricted funds £	Restricted funds £	Total funds £
<b>INCOME AND ENDOWMENTS FROM</b>			
Donations and legacies	314,758	-	314,758
<b>Charitable activities</b>			
Charitable Activities	17,860	47,837	65,697
Investment income	183	-	183
Other income	<u>128,253</u>	<u>-</u>	<u>128,253</u>
<b>Total</b>	<u>461,054</u>	<u>47,837</u>	<u>508,891</u>
<b>EXPENDITURE ON</b>			
<b>Charitable activities</b>			
Charitable Activities	<u>484,691</u>	<u>47,837</u>	<u>532,528</u>
<b>NET INCOME/(EXPENDITURE)</b>	(23,637)	-	(23,637)
<b>RECONCILIATION OF FUNDS</b>			
Total funds brought forward	<u>304,473</u>	<u>-</u>	<u>304,473</u>
<b>TOTAL FUNDS CARRIED FORWARD</b>	<u>280,836</u>	<u>-</u>	<u>280,836</u>

10. TANGIBLE FIXED ASSETS

	Freehold property £	Musical and stage equipment £	Furniture and fixtures £	Computer equipment £	Totals £
<b>COST</b>					
At 1 May 2024 and 30 April 2025	<u>477,951</u>	<u>12,336</u>	<u>7,969</u>	<u>11,087</u>	<u>509,343</u>
<b>DEPRECIATION</b>					
At 1 May 2024	-	11,786	7,969	8,925	28,680
Charge for year	<u>-</u>	<u>550</u>	<u>-</u>	<u>1,473</u>	<u>2,023</u>
At 30 April 2025	<u>-</u>	<u>12,336</u>	<u>7,969</u>	<u>10,398</u>	<u>30,703</u>
<b>NET BOOK VALUE</b>					
At 30 April 2025	<u>477,951</u>	<u>-</u>	<u>-</u>	<u>689</u>	<u>478,640</u>
At 30 April 2024	<u>477,951</u>	<u>550</u>	<u>-</u>	<u>2,162</u>	<u>480,663</u>

## TYNESIDE VINEYARD

### NOTES TO THE FINANCIAL STATEMENTS - continued FOR THE YEAR ENDED 30 APRIL 2025

#### 10. TANGIBLE FIXED ASSETS - continued

Freehold property, known as Life Vineyard Church, The Green, Wallsend was valued at £335,000 in November 2019 by Vickers & Barrass Chartered Surveyors and subsequent renovations were carried out at a cost of £142,951. It is the trustees' view that the property's value at the balance sheet date did not differ materially from the sum of these amounts.

Had the historic cost model been applied to freehold property, its carrying value would have been £442,187 at the balance sheet date.

#### 11. DEBTORS: AMOUNTS FALLING DUE WITHIN ONE YEAR

	2025	2024
	£	£
Other debtors	<u>3,647</u>	<u>8,489</u>

#### 12. CREDITORS: AMOUNTS FALLING DUE WITHIN ONE YEAR

	2025	2024
	£	£
Bank loan (see note 14)	3,239	3,039
Taxation and social security	2,219	2,628
Other creditors	<u>9,583</u>	<u>8,231</u>
	<u>15,041</u>	<u>13,898</u>

#### 13. CREDITORS: AMOUNTS FALLING DUE AFTER MORE THAN ONE YEAR

	2025	2024
	£	£
Bank loan (see note 14)	<u>236,493</u>	<u>239,732</u>

#### 14. LOANS

An analysis of the maturity of loans is given below:

	2025	2024
	£	£
Amounts falling due within one year on demand:		
Bank loan	<u>3,239</u>	<u>3,039</u>
Amounts falling between one and two years:		
Bank loan	<u>3,452</u>	<u>3,239</u>
Amounts falling due between two and five years:		
Bank loan	<u>11,784</u>	<u>11,055</u>

## TYNESIDE VINEYARD

### NOTES TO THE FINANCIAL STATEMENTS - continued FOR THE YEAR ENDED 30 APRIL 2025

#### 14. LOANS - continued

	2025 £	2024 £
Amounts falling due in more than five years:		
Repayable by instalments:		
Bank loan	221,257	225,438
	<u>          </u>	<u>          </u>

The bank loan is repayable by instalments over a 30 year term with the final payment falling due in January 2053; a variable rate of interest applies.

#### 15. SECURED DEBTS

The following secured debts are included within creditors:

	2025 £	2024 £
Bank loan	<u>239,732</u>	<u>242,771</u>

The bank loan is secured on the charity's Freehold Land and Buildings.

#### 16. ANALYSIS OF NET ASSETS BETWEEN FUNDS

	Unrestricted funds £	Restricted funds £	2025 Total funds £	2024 Total funds £
Fixed assets	478,640	-	478,640	480,663
Current assets	63,485	-	63,485	53,803
Current liabilities	(15,041)	-	(15,041)	(13,898)
Long term liabilities	<u>(236,493)</u>	<u>-</u>	<u>(236,493)</u>	<u>(239,732)</u>
	<u>290,591</u>	<u>-</u>	<u>290,591</u>	<u>280,836</u>

# TYNESIDE VINEYARD

## NOTES TO THE FINANCIAL STATEMENTS - continued FOR THE YEAR ENDED 30 APRIL 2025

### 17. MOVEMENT IN FUNDS

	At 1/5/24 £	Net movement in funds £	Transfers between funds £	At 30/4/25 £
<b>Unrestricted funds</b>				
General fund	45,656	28,282	(21,566)	52,372
Revaluation reserve	35,764	-	-	35,764
Capital fund	<u>199,416</u>	<u>(18,527)</u>	<u>21,566</u>	<u>202,455</u>
	<u>280,836</u>	<u>9,755</u>	<u>-</u>	<u>290,591</u>
<b>TOTAL FUNDS</b>	<u>280,836</u>	<u>9,755</u>	<u>-</u>	<u>290,591</u>

Net movement in funds, included in the above are as follows:

	Incoming resources £	Resources expended £	Movement in funds £
<b>Unrestricted funds</b>			
General fund	422,553	(394,271)	28,282
Capital fund	<u>-</u>	<u>(18,527)</u>	<u>(18,527)</u>
	422,553	(412,798)	9,755
<b>Restricted funds</b>			
Food Co-operatives	20,385	(20,385)	-
Other restricted funds	<u>2,500</u>	<u>(2,500)</u>	<u>-</u>
	<u>22,885</u>	<u>(22,885)</u>	<u>-</u>
<b>TOTAL FUNDS</b>	<u>445,438</u>	<u>(435,683)</u>	<u>9,755</u>

### Comparatives for movement in funds

	At 1/5/23 £	Net movement in funds £	Transfers between funds £	At 30/4/24 £
<b>Unrestricted funds</b>				
General fund	89,352	(5,114)	(38,582)	45,656
Revaluation reserve	35,764	-	-	35,764
Capital fund	<u>179,357</u>	<u>(18,523)</u>	<u>38,582</u>	<u>199,416</u>
	<u>304,473</u>	<u>(23,637)</u>	<u>-</u>	<u>280,836</u>
<b>TOTAL FUNDS</b>	<u>304,473</u>	<u>(23,637)</u>	<u>-</u>	<u>280,836</u>



**NOTES TO THE FINANCIAL STATEMENTS - continued**  
**FOR THE YEAR ENDED 30 APRIL 2025**

**17. MOVEMENT IN FUNDS - continued**

Comparative net movement in funds, included in the above are as follows:

	Incoming resources £	Resources expended £	Movement in funds £
<b>Unrestricted funds</b>			
General fund	461,054	(466,168)	(5,114)
Capital fund	<u>-</u>	<u>(18,523)</u>	<u>(18,523)</u>
	461,054	(484,691)	(23,637)
<b>Restricted funds</b>			
Food Co-operatives	33,337	(33,337)	-
Other restricted funds	<u>14,500</u>	<u>(14,500)</u>	<u>-</u>
	<u>47,837</u>	<u>(47,837)</u>	<u>-</u>
<b>TOTAL FUNDS</b>	<u>508,891</u>	<u>(532,528)</u>	<u>(23,637)</u>

Food Co-Operatives includes income from North Tyneside Council, among other sources, to support and develop the Wallsend Pop-Up Pantry and Social Supermarket at the Riverside Centre.

**Transfers between funds**

The transfer of £21,565 (2024 - £38,582) to the Capital Fund represents the aggregate of expenditure on property improvements (net of grant and loan-funded expenditure) and payments made to reduce the borrowing against the freehold property.

**18. RELATED PARTY DISCLOSURES**

There were no related party transactions for the year ended 30 April 2025.