



iDelight

Annual Report & Financial Statements

1 SEPTEMBER 2022 – 31 AUGUST 2023



Annual Report & Financial Statements

1 SEPTEMBER 2022 – 31 AUGUST 2023

The Board of Trustees is please to present its annual report for the year 1st September 2022 to 31st August 2023, together with the financial statements for the year.

Charity Status and Constitution

Delight is a registered charity, number 1159567. Delight is constituted as a Charitable Incorporated Organisation and registered with the Charity Commission for England and Wales. Delight is governed by its Constitution which was adopted on the 5th November 2014.

Registered Address

Delight, 9B Station Avenue, Caterham, Surrey CR3 6LB

Trustees

Victoria Francis Chair
Dom Carpenter Treasurer
Matt Fox Secretary
Stephen Brown
Elizabeth Jane Ee-Mei Lim
(appointed 2023)

Chief Executive Officer

Kathryn Mills

Bankers

Lloyds Bank, 21 Station Avenue, Caterham CR3 6YT

Accountant

Tudor John, Nightingale House, 46-48 East Street, Epsom, Surrey KT17 1HQ

Charitable Objectives

Delight's vision is to provide equal opportunity for every child to thrive both in their school years and beyond.

Our high-quality, inclusive arts programmes aim to improve the wellbeing, creativity and learning outcomes for children from disadvantaged backgrounds and/or with special educational needs.

Delight's primary objectives, as laid out in its Constitution, are to: advance in life and help young people especially, but not exclusively, through advancing education, particularly in the arts.

Delight partner schools 2022-23



- | | |
|--|---|
| 1 Ashford Park Primary School | 16 Ottershaw Junior School |
| 2 Chandlers Field Primary School | 17 Pyrcroft Grange Primary School |
| 3 Cordwalles Junior School | 18 Rowdown Primary School |
| 4 Darley Dene Primary School | 19 St Anne's Catholic Primary School |
| 5 Epsom Primary and Nursery School | 20 St John's Primary School, Knaphill |
| 6 Fairchildes Primary School | 21 St Martins C of E Primary School |
| 7 Furze field Primary School | 22 St Mary's C of E Primary School, Oxted |
| 8 Gosden House School | 23 St Michaels Catholic Primary School |
| 9 Guildford Grove Primary School | 24 St Paul's C of E Primary School |
| 10 Kingfield Primary School | 25 Town Farm Primary School |
| 11 Loseley Fields Primary School | 26 Walton Oak Primary School |
| 12 Manorfield Primary and Nursery School | 27 Westfield Primary School |
| 13 Monks Orchard Primary School | 28 Weyfield Primary Academy |
| 14 New Haw Junior School | 29 Wray Common Primary School |
| 15 Ottershaw Infant School | |

Welcome

On behalf of Delight's Board of Trustees, I'm very pleased to share our Annual Report and Financial Statements for the academic year 2022-23.

Creating magic in learning has always been at the heart of Delight's vision and we are privileged to have worked with 2,227 children and 129 teachers across 29 Surrey and Croydon state primary schools this year.

The results highlighted in this year's report demonstrate the numerous positive impacts of participating in Delight's arts-based learning programmes and their role in helping to close the opportunity and attainment gap for children from disadvantaged backgrounds. From joyful immersion in creative activities to showcasing artistic achievements in exhibitions and performances, our arts-based learning programmes are steeped in opportunities that help children thrive during their school years and beyond – raising confidence, pride and aspirations whilst building capacity to better

manage emotions and stress.

Statistics alone, however, cannot communicate the enormity of Delight's impact on the lives of so many, and, for me, hearing the stories of change from participating children, their teachers and caregivers is one of the most rewarding aspects of being on Delight's Board of Trustees. Some of these stories are included in our Impact Report and give an insight into the lives of the children that we reach.

As always, we are indescribably grateful to all those who have made it possible. My sincere thanks go to the teachers, teaching assistants, head teachers, arts partners and funders, the fabulous Delight team and the children whose enthusiasm and trust make this work possible and these changes a reality.

Victoria Francis Chair



Public Benefit: Our audience

Our primary audience is children aged 5 to 11, many are from families affected by socio-economic disadvantage and have challenging home lives.

Our audiences are also the teachers and headteachers from our partner schools, working together to embed arts-based learning to help every child have the opportunity to thrive during their school years and beyond.

We work in long-term partnership with state primary schools to reach children through safe and structured settings. Around one-third of the children we reach are eligible for the government's Pupil Premium support, a key indicator of disadvantage, whilst others narrowly miss the threshold but still face numerous challenges.

Disadvantage has a big influence on children's life chances:

- Socially and economically disadvantaged children are more likely to start school behind their peers and the attainment gap widens as they progress through school.
- Socially and economically disadvantaged children are more likely to face challenges with mental health, resilience, self-esteem, life satisfaction and confidence.
- A deficit of life experiences impacts disadvantaged children's aspirations and opportunities.
- Children with special educational needs and disabilities are more likely to be born into and grow up in poverty.

Of 2,227 participating children in 2022-23:

32%
were eligible for
Pupil Premium
support

22%
had English as
an additional
language

26%
had special
educational needs
and disabilities



Delight Methodology

Over the past 10 years, Delight has been levelling the playing field for children from disadvantaged backgrounds through arts-based learning.

Our robustly evidenced approach has been developed in partnership with professional artists, teachers, children and families.

Proven to result in strong outcomes for both children and teachers, our seven-step methodology is effective at closing the opportunity and attainment gap for children facing disadvantage and those with additional learning needs.



Inspiring arts experiences including professional theatre and dance productions in school, gallery visits and artist encounters.

Weekly creative workshops where children make and create with artists or their class teacher.



Empowering teachers through training and opportunities to lead workshops supported by artists, dancers and actors.

Children's exhibitions and performances to celebrate achievements with family and friends.



Evidence driven and continual evaluation to ensure maximum impact for children.

A legacy of creativity in schools by building teachers' arts-based learning skills and confidence via training and resources.



Long-term school partnerships as a catalyst for change in disadvantaged communities.

Working with our independent evaluation partner ImpactEd and using our robust impact measurements, we can evidence the significant benefits that our programmes bring to children who experience disadvantage.

Summary of findings by ImpactEd

- Delight is providing a programme which is filling a gap within the standard schooling curriculum.
- Delight programmes had a particular effect on pupils' oracy and literacy especially amongst those with special education needs and/or Pupil Premium.
- Children eligible for Pupil Premium showed an increase in artistic and social outcomes.
- Parental engagement for children eligible for Pupil Premium increased across most programmes.
- All programmes led to a confidence boost and provided pupils with the opportunity to work hard at and to overcome a challenge. This led to an increase in self-esteem and provided them with resilience that can be used across their other subjects at school.
- Children's confidence, teamwork and communication skills increased.
- Programmes contributed to pupils' views of, and confidence in, future engagement with the arts.
- Teachers' confidence and skills in delivering arts-based learning programmes increased.
- Parents saw Delight as a positive experience, where they believed that taking part in a Delight programme had a positive impact on their child's social and emotional learning and engagement at home.



Key areas of impact

Our 2022/23 evaluation is based on comprehensive data received from 236 children eligible for Pupil Premium, 1,543 participating children, 95 teachers, and 837 parents and carers across 29 partner schools.

*“It was incredible:
I felt really powerful
and brave!”*

CHILD

1 Improving children's social and emotional wellbeing

91% of children eligible for Pupil Premium showed improved social outcomes including resilience, self-worth, pride, confidence, communication, teamwork, learning engagement.

83% of all participating children felt proud of their achievements.

80% of parents and carers have seen a positive difference in their child's social and emotional skills.

80% of parents and carers have seen an increase in their child's self-confidence.

2 Increasing children's learning engagement and motivation to learn

74% of children eligible for Pupil Premium showed improved learning outcomes including fluency of speech, understanding new words, phrases, and concepts, use of new vocabulary, explaining new learning and ideas, and following instructions.

1,592 Arts Awards presented to recognise children's fantastic achievements.

91% of parents and carers said their child talked about their Delight project at home.

3 Raising children's aspirations and broadening horizons

92% of children eligible for Pupil Premium showed improved artistic outcomes including participation, creative expression, and independent working.

For 54% of children this was their first time meeting an artist, actor or dancer.

For 37% of children this was their first time seeing a live professional performance or visiting an exhibition.

4 Building a legacy of arts-based learning in schools

88% of teachers reported increased confidence in using arts-based learning techniques in their teaching practice.

91% of teachers said that they will use arts-based learning approaches after taking part.

5 Building a positive support network around each child

2,382 parents and carers saw children's performances or exhibitions.

50% of children eligible for Pupil Premium experienced improved parent/carer engagement.

90% of parents and carers said the Delight programme was a positive experience.

84% of parents and carers say they feel more encouraged to enjoy art, dance or performance with their child on a regular basis.

“All pupils have grown in confidence and that, in turn, has made them more motivated at school and with their schoolwork. It is like they suddenly feel that after Macbeth they can do anything now and are less worried about trying new things.”

TEACHER

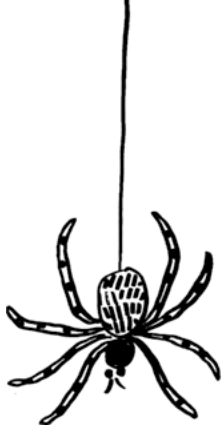
Delight in the Woods

A NATURE AND STORYTELLING ADVENTURE



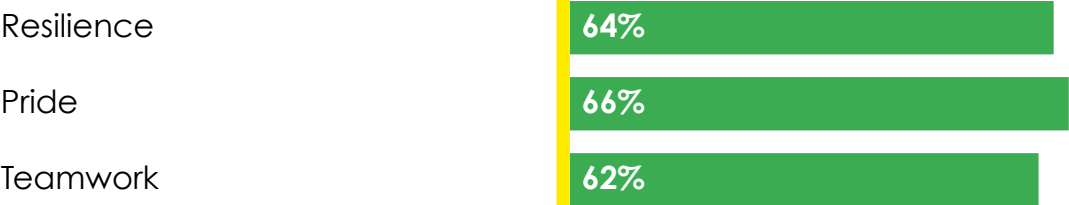
Delight in the Woods is a 6-week immersive storytelling adventure in partnership with theatre company ZooCo and the National Trust.

The journey begins unexpectedly on a trip to Box Hill woods, where children are led through the Enchanted Tree only visible to 'The Best Storytellers in the World'. Over the following weeks, guided by bespoke props, audio recordings and films, the children must help poet William Wellington grow his Story Plants and save Story Land.

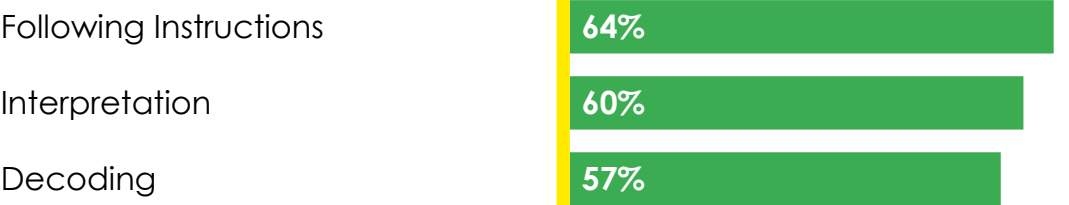


The percentage of participating children eligible for Pupil Premium who showed an improvement in the following areas:

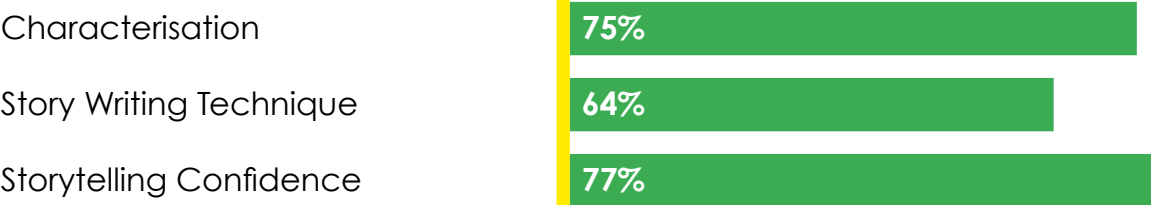
Social & Emotional Wellbeing



Learning Engagement



Creative Development



Parent & Carer Engagement



Comprehensive data gathered from 47 children.
More detailed data on Delight in the Woods can be found on page 57.

“My daughter talked daily about the fun she had and the updates from William in Story Land. It was so lovely to come into the classroom this morning and share the magic!”

PARENT



Michael's Story

A PUPIL PREMIUM CASE STUDY

Before Delight in the Woods, Michael showed little interest in reading or writing. He preferred watching videos online to engaging with books and struggled to relate to his peers. Michael needed a lot of encouragement just to participate in classroom basics, let alone creative writing.

However, through writing letters to help the fictional William and creating his own imaginative stories, Michael began connecting with storytelling, growing more confident in composing, sharing, and revising his work. Reading aloud to help the story plant grow brought his writing to life even more.

By the end of Delight in the Woods, he had fully embraced fiction reading and writing. His parents have noticed his increased engagement with books, as well as a newfound passion for writing stories – growth they believe stems directly from what he experienced during Delight in the Woods.

“I like writing stories about the woods and the animals there. I like to make them talk.”



Development Areas

Social & Emotional Wellbeing

Before Programme

After Programme

Self Worth



Pride



Confidence



Learning Engagement

Before Programme

After Programme

Explaining



Interpretation



Speech



Creative Development

Before Programme

After Programme

Characterisation



Story Writing Technique



Storytelling Confidence



Parent & Carer Engagement

Before Programme

After Programme

Learning Engagement



Home Support



Delight in Dance

HEROES VS VILLAINS

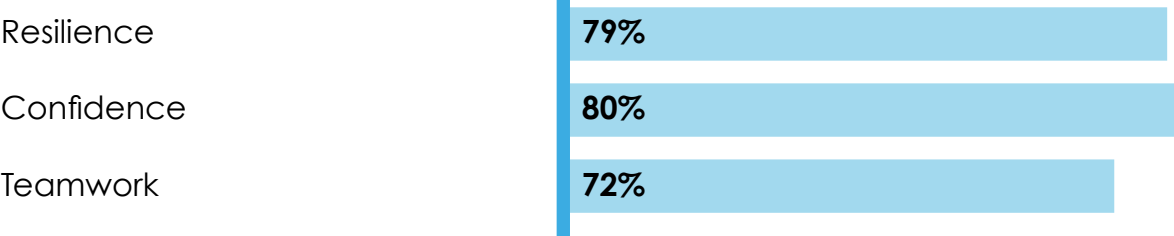


Delight in Dance delivered in partnership with contemporary dance company Made by Katie Green and Croydon Libraries uses dance to bring stories to life whilst building literacy skills.

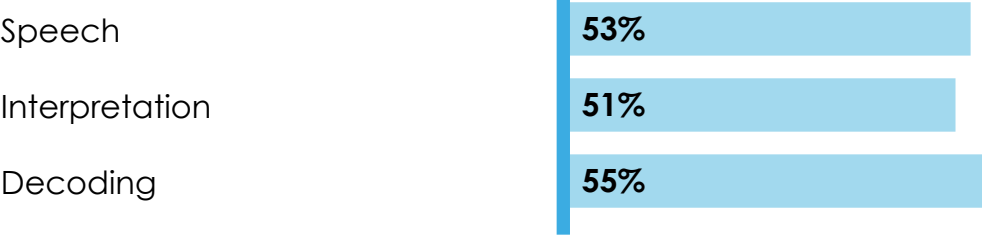
Children are recruited to help the “Story Detectives”, dancers Playful and Particular, search for the ‘most important story’. Over 6 weeks, professional dancers and teachers develop children’s dance techniques and storytelling confidence to choreograph Heroes vs Villains dances to perform for families.

The percentage of participating children eligible for Pupil Premium who showed a development in the following areas:

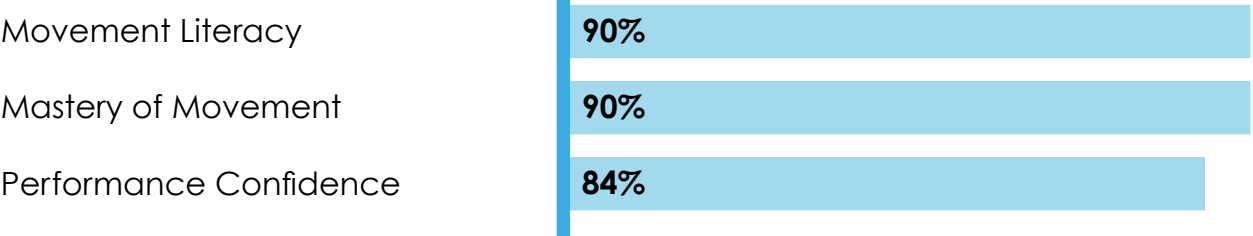
Social & Emotional Wellbeing



Learning Engagement



Creative Development



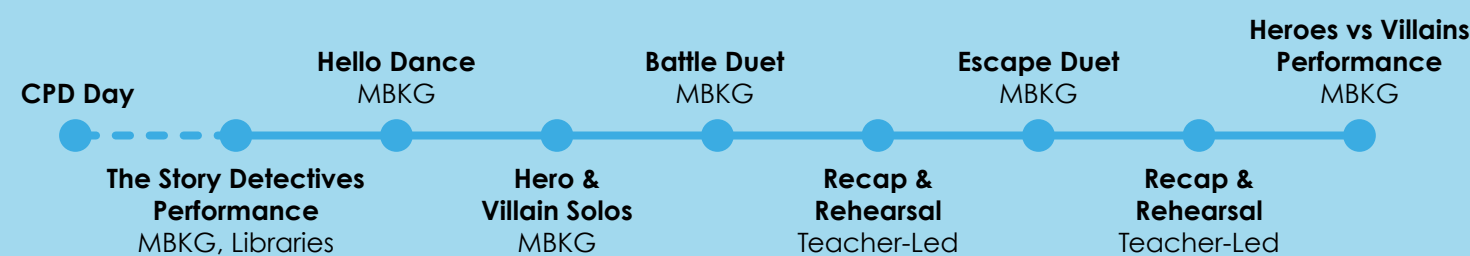
Parent & Carer Engagement



Comprehensive data gathered from 39 children.
More detailed data on Delight in Dance can be found on pages 57 & 58.

“Delight in Dance helped pupils improve in their overall social confidence.”

ImpactEd



Ayden's Story

A PUPIL PREMIUM CASE STUDY

When Ayden began Delight in Dance his teacher shared that he struggled to engage both with classmates and teachers. Diagnosed with autism spectrum disorder (ASD) and still learning English as a second language, Ayden had difficulty communicating and connecting with others.

Over the weeks, as the children created a dance routine to tell the story of a hero overcoming a villain, a subtle but profound transformation happened, and by the end of the programme, Ayden had begun to emerge from his shell. He participated eagerly in both dancer and teacher-guided sessions, soaking up the choreography and according to his teacher, his social and emotional development has improved significantly.

Parent engagement improved slightly but still remains a challenge but Delight in Dance seems to have unlocked a joy in Ayden. He has discovered an expressive outlet in dance and connection with classmates through movement.

“The delight in dance was great. I liked the heroes and villains, and I would like to do more dancing.”



Development Areas

Social & Emotional Wellbeing

Resilience

Confidence

Teamwork

Before Programme

1	2	3	4	5
1	2	3	4	5
1	2	3	4	5

After Programme

1	2	3	4	5
1	2	3	4	5
1	2	3	4	5

Learning Engagement

Speech

Interpretation

Words & Phrases

Before Programme

1	2	3	4	5
1	2	3	4	5
1	2	3	4	5

After Programme

1	2	3	4	5
1	2	3	4	5
1	2	3	4	5

Creative Development

Movement Literacy

Mastery of Movement

Performance Confidence

Before Programme

1	2	3	4	5
1	2	3	4	5
1	2	3	4	5

After Programme

1	2	3	4	5
1	2	3	4	5
1	2	3	4	5

Parent & Carer Engagement

Learning Engagement

Attending Events

Before Programme

1	2	3	4	5
1	2	3	4	5

After Programme

1	2	3	4	5
1	2	3	4	5

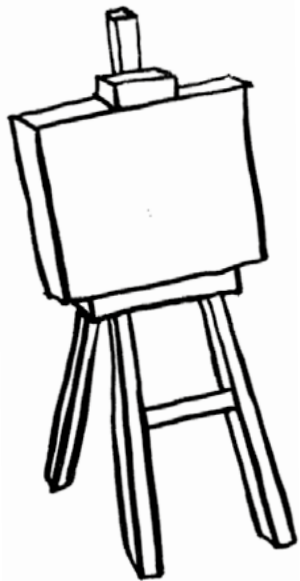
Delight in Art

WATTS



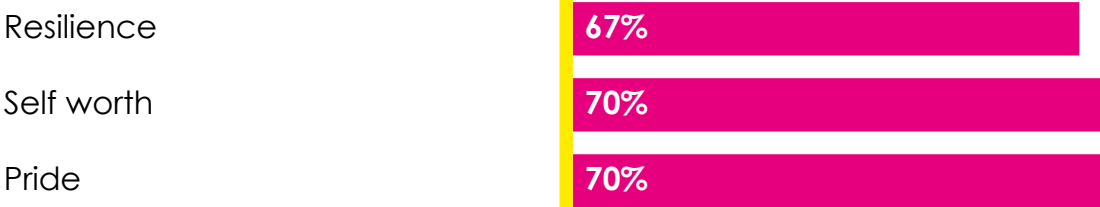
Delight in Art – Watts is delivered in partnership with Paintbox and Watts Gallery – Artists’ Village.

The programme begins with a guided Watts Gallery tour where children explore topic-related artworks. Over the following weeks, professional Paintbox artists lead workshops that encourage children to create original artworks reflecting their expanded creative confidence. Children’s paintings are showcased at a private exhibition for family and friends back at Watts Gallery which remains on public display for several weeks.

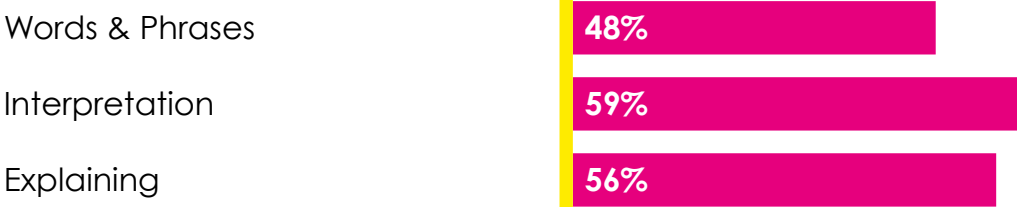


The percentage of participating children eligible for Pupil Premium who showed a development in the following areas:

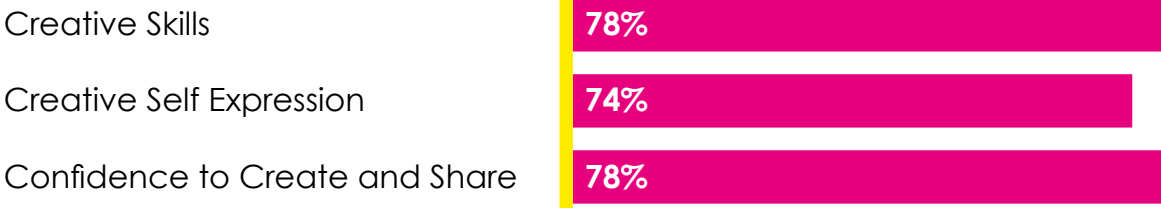
Social & Emotional Wellbeing



Learning Engagement



Creative Development



Parent & Carer Engagement



Comprehensive data gathered from 27 children
More detailed Delight in Art – Watts data can be found on page 58.

“I was amazed when I saw my art on the wall at Watts Gallery because it’s a gallery that lots of people can go to and our paintings were there.”

CHILD



Delight in Art

RAINFOREST RETREAT



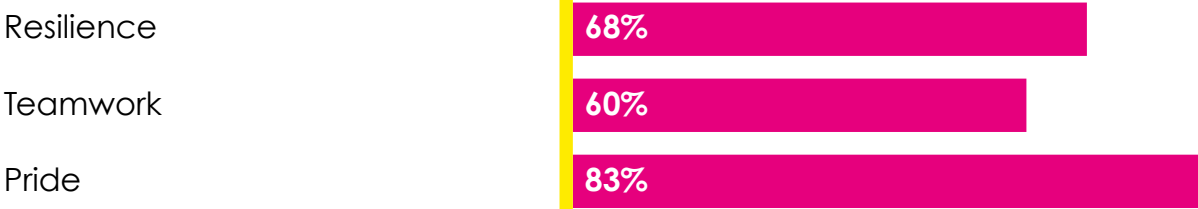
In Partnership with Paintbox and Watts Gallery – Artists’ Village, Rainforest Retreat transforms classrooms into immersive jungles, nurturing visual arts skills alongside nature themes.

Taking inspiration from legendary arts activist George Watts, children begin their experience with a Watts Gallery visit. Over the following 6 weeks, blending hands-on workshops with professional artists and teacher-led art lessons, children build observational skills and develop self-expression, crafting Rainforest flora and fauna for a classroom installation that is shared with parents and carers.



The percentage of participating children eligible for Pupil Premium who showed a development in the following areas:

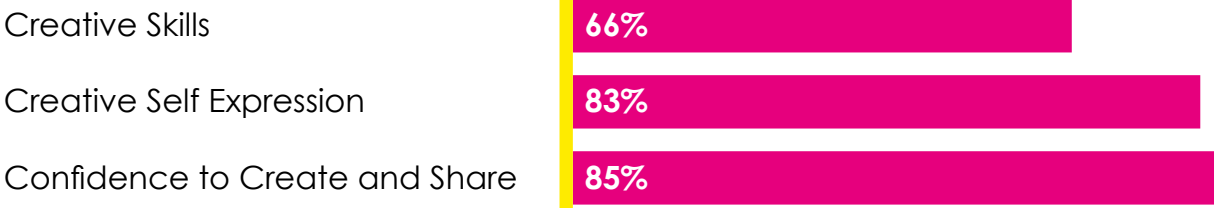
Social & Emotional Wellbeing



Learning Engagement



Creative Development



Parent & Carer Engagement



Comprehensive data gathered from 47 children.
More detailed Delight in Art – Rainforest Retreat data can be found on page 59.

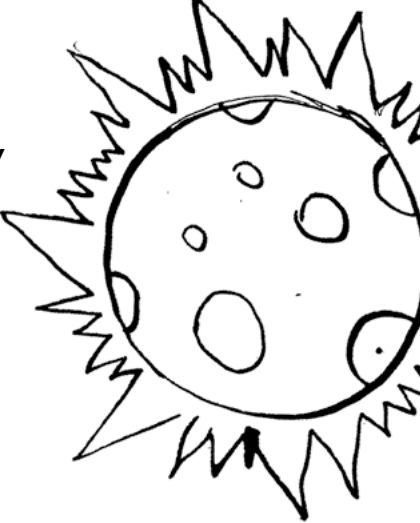
“It was great to do a multi-week activity so they can build skills over a longer timeframe rather than the usual quick art lesson at school.”

TEACHER



Delight in Art

OUT OF THIS WORLD

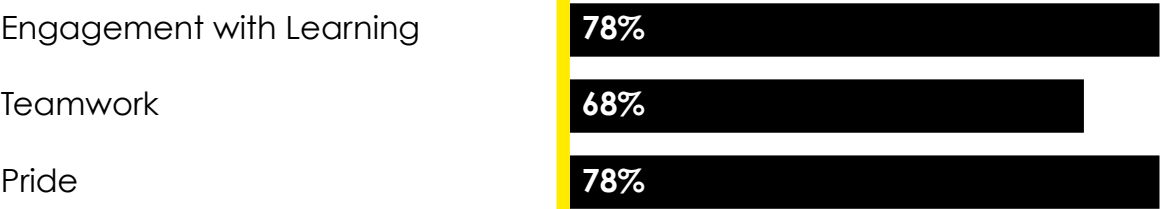


Out of this World guides children on an arts adventure spanning galleries and galaxies in partnership with Paintbox and Watts Gallery – Artists’ Village.

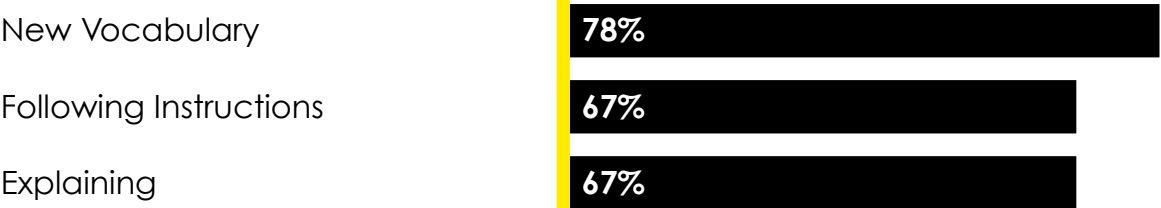
Children begin their creative journey at Watts Gallery, discovering how space inspired legendary painter George Watts. Over 6 weeks, professional Paintbox artists lead drawing, painting, and collage workshops. These hands-on artist-led sessions interweave with teacher-led art lessons, guiding children to create space-themed artwork which is exhibited to share with families and friends.

The percentage of participating children eligible for Pupil Premium who showed a development in the following areas:

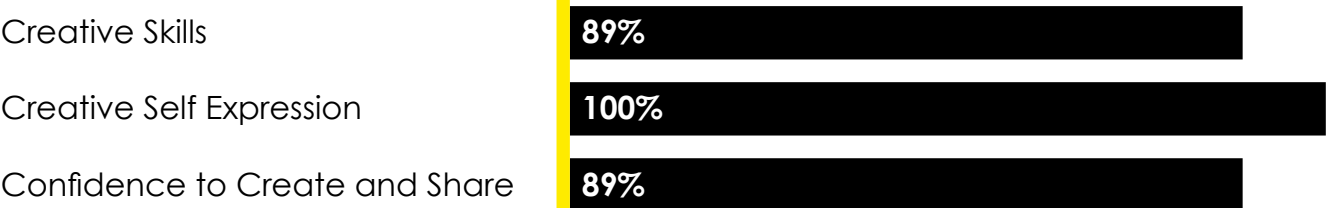
Social & Emotional Wellbeing



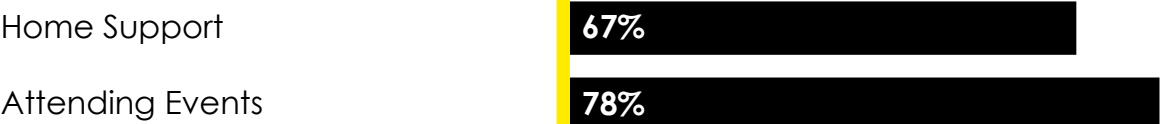
Learning Engagement



Creative Development



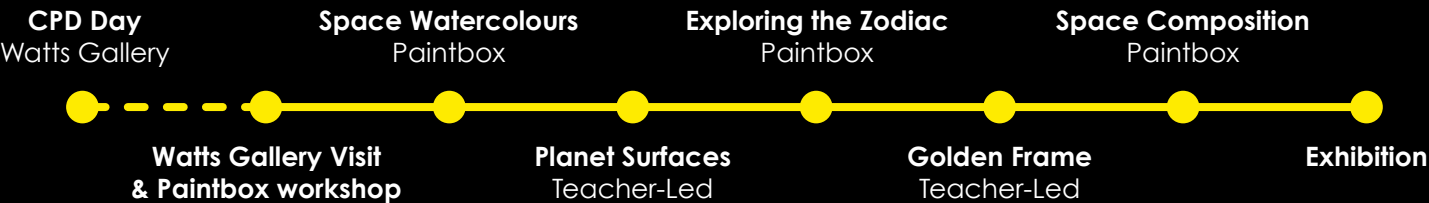
Parent & Carer Engagement



Comprehensive data gathered from 9 children.
More detailed data on Out of this World can be found on page 60.

“It was definitely one of my best experiences at school. I would love to do it again if I could.”

CHILD



Crystal's Story

A PUPIL PREMIUM CASE STUDY

Before Crystal began the Out of this World visual arts programme, she frequently displayed challenging behaviours and low self-esteem. Yet over the 6-week creative process, her teacher witnessed a remarkable transformation on both an academic and personal level.

Crystal often had difficulties connecting with traditional academic subjects but through Out of this World she found a way to confidently express herself. Her teacher observed a key emotional shift as Crystal became more willing to ask for help when she hit obstacles – a huge step forward.

During the exhibition Crystal spoke about her final art piece with newfound pride and confidence, showing huge progress in how she viewed something she had created.

The change in engagement shown by Crystal's parent was also significant. They came to the exhibition, stayed for the whole time, engaged with Crystal's artwork and both Crystal and her parent enjoyed looking at the other pieces of art made by other children.

“Out of this World was good fun. I enjoyed the water colours the most.”



Development Areas

Social & Emotional Wellbeing

Engagement with Learning

Resilience

Pride

Before Programme

1	2	3	4	5
1	2	3	4	5
1	2	3	4	5

After Programme

1	2	3	4	5
1	2	3	4	5
1	2	3	4	5

Learning Engagement

New Vocabulary

Following Instructions

Explaining

Before Programme

1	2	3	4	5
1	2	3	4	5
1	2	3	4	5

After Programme

1	2	3	4	5
1	2	3	4	5
1	2	3	4	5

Creative Development

Creative Skills

Creative Self Expression

Confidence to Create and Share

Before Programme

1	2	3	4	5
1	2	3	4	5
1	2	3	4	5

After Programme

1	2	3	4	5
1	2	3	4	5
1	2	3	4	5

Parent & Carer Engagement

Learning Engagement

Attending Events

Before Programme

1	2	3	4	5
1	2	3	4	5

After Programme

1	2	3	4	5
1	2	3	4	5

Delight in Shakespeare

MACBETH



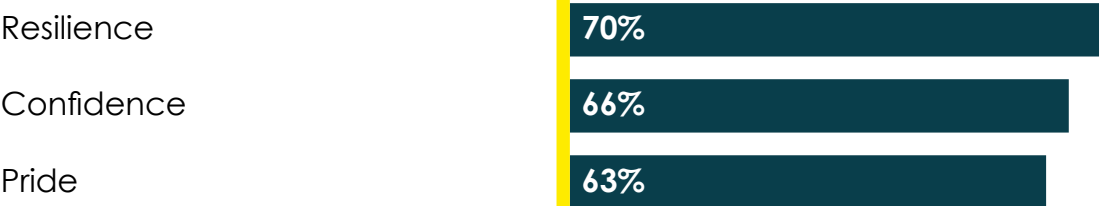
Delight in Shakespeare ignites a passion for Shakespeare, beginning with Guildford Shakespeare Company's relaxed performance of Macbeth, scripted specifically for a young audience.

Over 7 weeks, professional actors and teachers help children unlock Shakespearean language, devise scripts, craft sets and props, and design costumes, culminating in an original production of Macbeth to share with families. Delight in Shakespeare helps children to become comfortable and familiar with Shakespeare's texts before moving on to secondary school.

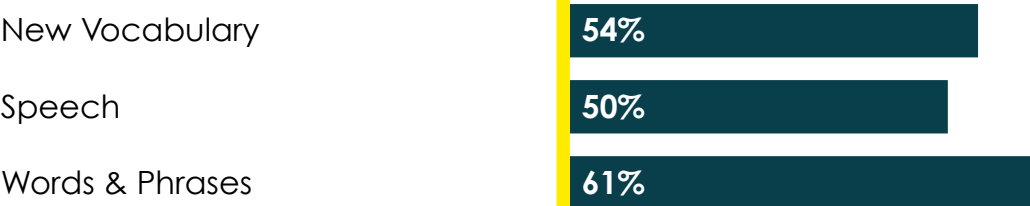


The percentage of participating children eligible for Pupil Premium who showed a development in the following areas:

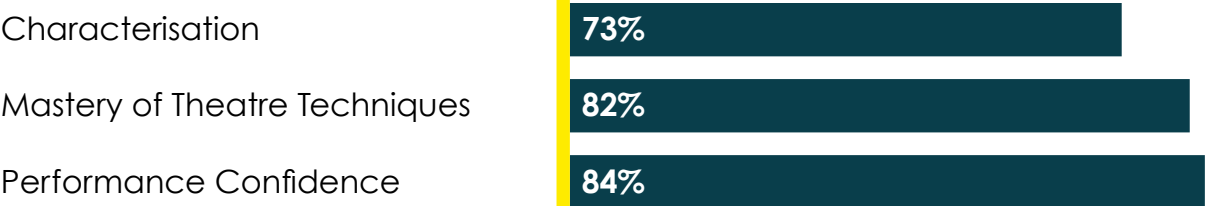
Social & Emotional Wellbeing



Learning Engagement



Creative Development



Parent & Carer Engagement



Comprehensive data gathered from 56 children.
More detailed Delight in Shakespeare data can be found on page 60.

“We had one school refuser who came in for the whole programme and has been in school ever since.”

TEACHER



Joel's Story

A PUPIL PREMIUM CASE STUDY

Joel began Delight in Shakespeare as a gentle boy who didn't always raise his hand or step into the spotlight. Though perfectly capable, he didn't fully recognise his own potential and value. His teacher hoped that the experience of creating a class production of Macbeth would allow him to see how valued he is and develop his confidence.

After landing a leading role as King Malcolm, Joel excelled. He dedicated himself wholeheartedly to doing justice to the pivotal part, surpassing all his teacher's expectations.

According to his teacher, Joel returned to the classroom filled with new confidence. He now puts himself forward more, especially during role-play activities. Delight in Shakespeare allowed Joel to show himself and others what his teacher always knew - that his intrinsic nature brings value to everyone.

Most touchingly, Joel speaks about his experience with pride. Bonding with classmates while bringing the classic play to life created wonderful memories he says he'll always cherish. His only sadness is that he no longer gets to see the actor they worked with.

“I liked that we all came together to put on the play for the school and our families. I do wish we got to see Izzy [GSC actor] more though.”



Development Areas

Social & Emotional Wellbeing

Teamwork

Confidence

Pride

Before Programme

1	2	3	4	5
1	2	3	4	5
1	2	3	4	5

After Programme

1	2	3	4	5
1	2	3	4	5
1	2	3	4	5

Learning Engagement

New Vocabulary

Speech

Words & Phrases

Before Programme

1	2	3	4	5
1	2	3	4	5
1	2	3	4	5

After Programme

1	2	3	4	5
1	2	3	4	5
1	2	3	4	5

Creative Development

Characterisation

Mastery of Theatre Techniques

Performance Confidence

Before Programme

1	2	3	4	5
1	2	3	4	5
1	2	3	4	5

After Programme

1	2	3	4	5
1	2	3	4	5
1	2	3	4	5

Parent & Carer Engagement

Learning Engagement

Attending Events

Before Programme

1	2	3	4	5
1	2	3	4	5

After Programme

1	2	3	4	5
1	2	3	4	5

“In my 10 years of teaching, this was one of the highlights of my career! I loved how all the SEN children achieved the same as everyone else.”

TEACHER

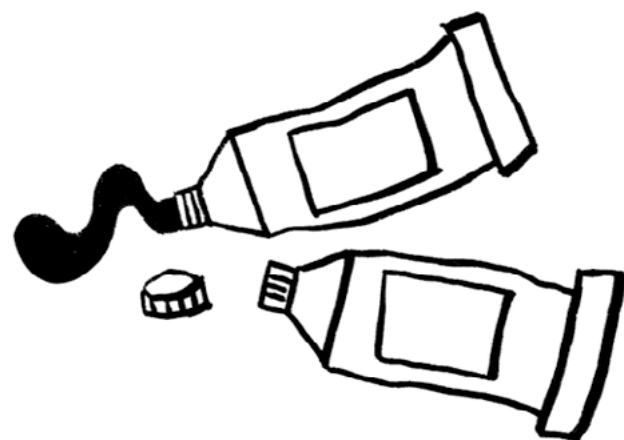
Access and Inclusion

Schools are increasingly booking Delight programmes to support children with special educational needs and disabilities (SEND) in both mainstream classes and specialist centres.

Last year, 26% of participating children had identified special educational needs and disabilities, with many more with undiagnosed needs. We also worked with children from our partner schools' specialist units, and for the first time, a specialist school for young people with learning and additional needs.

A huge benefit of arts-based learning is that it is such an inclusive approach that really connects with children who struggle with traditional teaching styles. Delight is committed to making all parts of our work accessible to all children, helping everyone to celebrate their achievements whatever their starting point. Through constant conversation and evaluation, we continue to develop and refine our programme content to ensure that every aspect is accessible to all children.

Our experience in working with schools with high proportions of children with learning needs, has taught us that offering different ways to learn can benefit everyone.



Making our work accessible

Who we work with

- Mainstream primary schools where some children have special educational needs and disabilities, English as an additional language, children experiencing socio-economic disadvantage.
- Mainstream primary schools with attached specialist education centres where children spend time in both the centre and mainstream class.
- Specialist education centres attached to primary schools where pupils spend the majority of their time in the centre.
- Specialist education schools.

Programme sessions

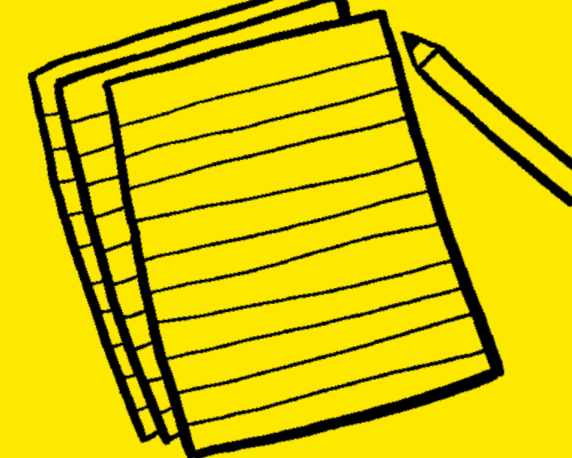
- Relaxed performances as standard.
- Sessions delivered by artists experienced in supporting children with a range of learning or physical needs.
- Planning meeting with teachers to identify any programme adaptations needed.
- Kinaesthetic learning benefiting children that struggle with more traditional classroom learning and children with English as an additional language.

Programme resources

- Journals use a dyslexia friendly font, designed to support visual learners, with sentence starters and optional drawing response.
- “How-To” videos for each session support visual and auditory learners and children with delayed processing.
- All “How-To” videos incorporate British Sign Language/Sign Supported English to support D/deaf learners.
- Accessibility sheets offer a scaffolded way to complete journals.
- Vocabulary acquisition within creative workshops and journal content supports children with English as an additional language.

“The videos helped him to know how to make everything and when he got stuck these helped him to keep trying.”

COIN TEACHER



“Some teachers reflected that the Delight programmes encouraged impressively high levels of engagement amongst parents and carers.”

ImpactEd

Engaging parents and carers

Many of our partner schools report challenges with parent engagement. Every Delight programme incorporates opportunities to involve and engage families through children’s performances and exhibitions.

We saw increased parent and carer engagement amongst 50% of children eligible for Pupil Premium based on positive changes in:

- regular contact with class teacher
- engagement with child’s learning
- supporting learning at home
- attending child’s participation in events/activities



95%

of parents and carers said that their child talked about the Delight project at home

87%

of parents and carers feel more encouraged to enjoy art, dance or performance with their child on a regular basis

96%

of parents and carers believe Delight is a positive experience for their child



Developing teachers' skills and confidence

Delight aims to empower teachers to deliver creative lessons independently beyond their Delight experience.

We offer a range of training and support to teachers including CPD workshop days, working alongside arts professionals, quality learning resources and opportunities to independently lead creative workshops in school. With every programme, we provide teachers with comprehensive guidance and all the materials they need for their class to ensure their experience is accessible and enjoyable.

We've observed the strongest outcomes for children when teachers are proactively involved in creative delivery. In response to this, we are incorporating more opportunities for teachers to lead creative workshops, benefit from high-quality arts training and access resources to support and empower them.

This year, we tested two new ways of supporting teachers as part of our long-term plans to expand our teacher development initiatives.

129

teachers participated in Delight's arts-based learning training in 2022/23

88%

of teachers reported increased confidence in using arts-based learning techniques in their teaching practice

91%

of teachers said that they will use arts-based learning approaches after taking part

ImpactEd

Independent Evaluator

Independent evaluation by ImpactEd found that:

- Teachers increased confidence in delivering arts-based education.
- Teachers' skills and knowledge associated with arts-based learning improved between 19% to 63%.
- There was an increase in teachers who felt that arts-based learning was integrated as part of the wider-school curriculum.
- Teachers reflected positively on the impact and quality of the programmes in the endline surveys, scoring 4.4 or more out of 5.



“Headteachers unanimously agreed that after participating, teachers in their school had an improved sense of confidence and knowledge in delivering arts-based learning.”

INDEPENDENT EVALUATION BY ImpactEd

Pilot programmes

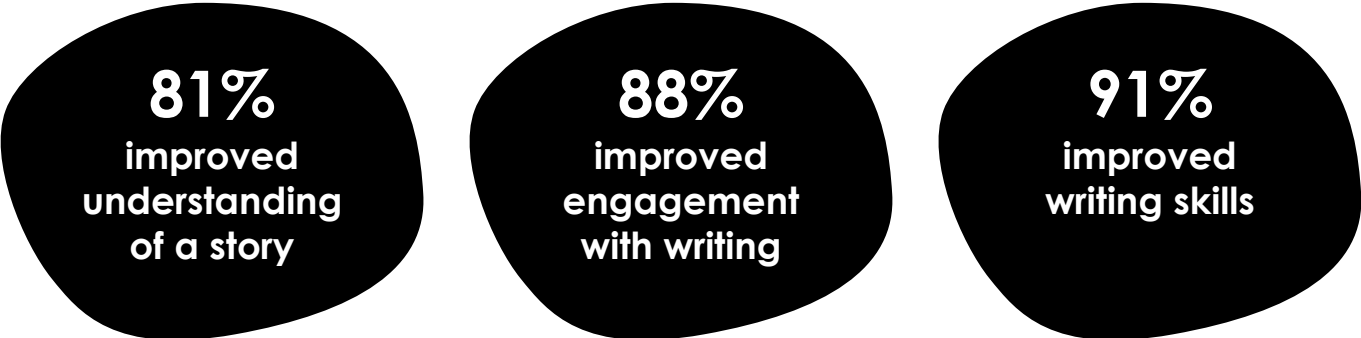
Drama for Writing

A new “Drama for Writing” workshop series was run with a group of schools in Addlestone (Surrey) as part of an Artswork commission (Arts Council England, South East). During four weeks of workshops, 40 teachers developed



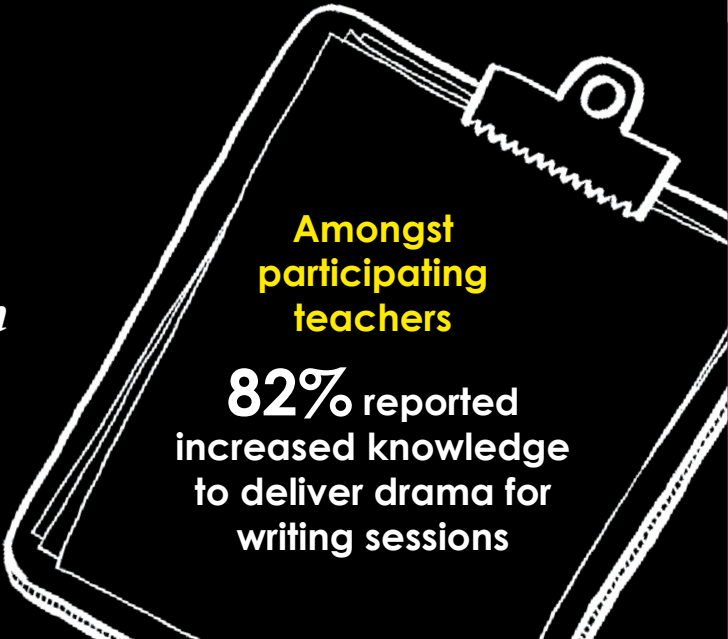
tools for using drama to increase children’s writing skills and creative storytelling. We had a focus on tactics for connecting with reluctant writers through games and activities.

Amongst 75 children eligible for Pupil Premium



“Since using drama-based writing techniques, Rene is more able to achieve as the writing task is memorable. It has encouraged him in his writing, and given him motivation to succeed, even when there is no drama involved.”

TEACHER



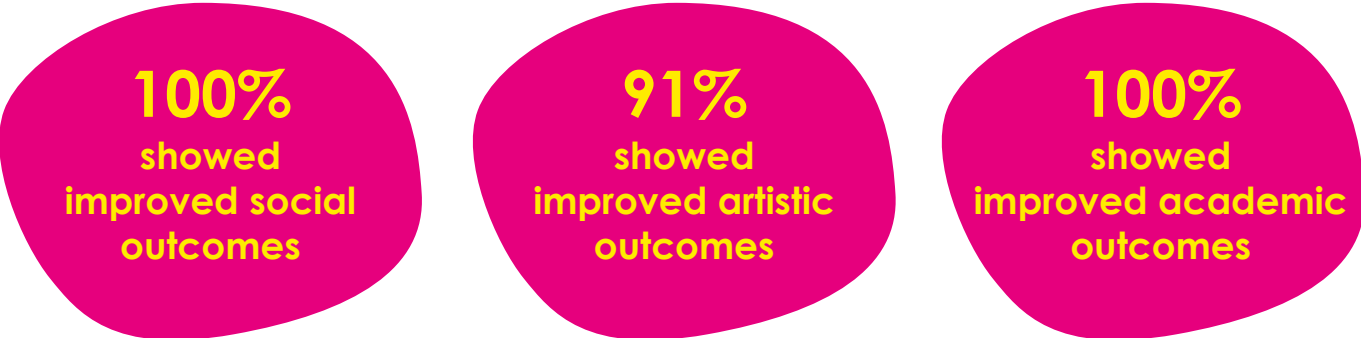
Rainforest Retreat Teacher-led



Over the coming years, we plan to roll out more teacher-led Delight programmes to expand our reach, enable more children across different ages and demographics to benefit from our range of programmes and provide lower-cost opportunities for schools.

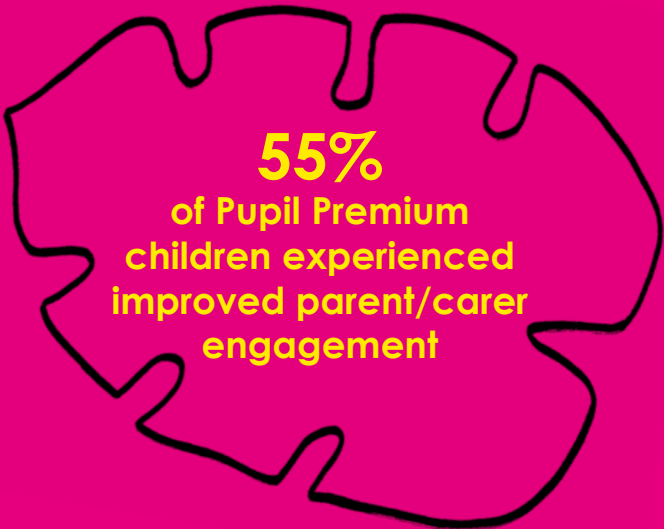
A teacher-led pilot of our popular Rainforest Retreat programme with 49 children aged 6-11 showed positive outcomes for teachers and children. One of the two partner schools was a specialist centre for children with autism and the experience has also informed our plans for developing the inclusivity of our programmes.

Amongst 11 children eligible for Pupil Premium



“The programme has helped me as a teacher and has uplevelled my art skills.”

TEACHER



Arts legacy

Within school

Delight works in long-term partnership with state primary schools, using the arts to help close the opportunity and attainment gap for children affected by disadvantage. Working closely with headteachers and senior leaders we support schools with creating a genuine arts legacy that will benefit children in years to come.

Many schools book Delight programmes to support their Pupil Premium strategies. At the end of their programme, we provide each school with a tailored impact report about the social, academic and creative outcomes for participating children eligible for Pupil Premium at their school. This not only helps build a strong school-wide case for using arts-based learning and cultural capital but helps to provide transparent and targeted evidence of the value of the school's financial investment to stakeholders.

We are hearing more and more from headteachers and school leaders about the ways that participating in Delight's programmes is enriching wider class learning. Indeed, we work with a whole class rather than specific children as this is proven to have stronger outcomes for all children. Our high-quality resources and materials are designed to make creative teaching easier rather than something additional to fit into the school day. Beyond each Delight programme, we offer advice and support for teachers on using arts-based learning across the curriculum including via our newsletter where we showcase creative initiatives and resources that can be used in the classroom.

Beyond school

We work with a fantastic group of arts organisations spanning the visual arts, dance, and performing arts. Part of our creative process is commissioning the development of new creative content and we are happy for our partner organisations to develop and deliver this work beyond working with Delight. Our vision is for all children to have access to high-quality cultural and creative experiences and we want to support our partners to maximise this.

The Story Detectives on tour!

Made by Katie Green's interactive dance adventure The Story Detectives went on tour to 19 libraries across the south-east and south-west of England this year. 48 performances took place at weekends and in the school holidays, engaging 2,448 audience members.

The Story Detectives was originally commissioned by Delight and it forms the week one professional dance performance for children participating in Delight in Dance.

Paintbox holiday workshops

Our visual arts partner Paintbox offers substantial discounts on their holiday art workshops for children who've participated in any Delight programme.

Over the past year, 41 art workshops during school holidays have been attended by 16 children who have worked on a Delight programme providing further opportunities to expand their creative skills and experiences.



Organisation structure and management

Governance

Delight has a board of five Trustees bringing a range of experience that covers arts, education, business, finance, marketing and law. The Charity must have a minimum of three Trustees at any time. Under Delight's Constitution with which the organisation is governed, the Board of Trustees has the power to do anything which is believed to further the Charity's objects or is conducive or incidental to doing so. The governance of the Charity is the responsibility of the Trustees who are elected and co-opted under the terms of its Constitution. The Board of Trustees has corporate responsibility for ensuring that Delight complies with any statutory or administrative requirements for the use of public and/or private funds. Trustees meet on a quarterly basis. All Trustees give of their time freely. None of the Trustees receive remuneration or other benefit from their work with the Charity.

Trustees Appointments

Trustee appointments are made by the Board. Trustees are selected according to the skills, knowledge, and experience which they can contribute to Delight's charitable remit. Delight was pleased to welcome Mei Lim to the Board of Trustees at the meeting on 18th April 2023.

Management

The day-to-day running of the Charity is overseen by Kathryn Mills alongside a team of seven part-time staff. Delight is a Living Wage employer.

Financial Review

The Trustees have reviewed the Charity's financial position and consider the Charity's financial position for the year ended 31st August 2023 to be robust.

At 31st August 2023, Delight held general unrestricted funds of £15,000 alongside pipeline development designated funds of £88,080 to support the Charity's development, reach and impact.

Reserves Policy

Delight holds free reserves for three months' operational costs, protecting organisational stability. At 31st August 2023, resilience designated funds were £47,605.

Declaration

The Trustees declare that they have approved the Trustees' report above.

Signed on behalf of Delight's Trustees:



Victoria Francis
CHAIR

DATE: 16TH JANUARY 2024

Independent Examiner's Report to the Trustees of
Delight

Independent examiner's report to the trustees of Delight

I report to the charity trustees on my examination of the accounts of Delight (the Trust) for the year ended 31 August 2023.

Responsibilities and basis of report

As the charity trustees of the Trust you are responsible for the preparation of the accounts in accordance with the requirements of the Charities Act 2011 ('the Act').

I report in respect of my examination of the Trust's accounts carried out under Section 145 of the Act and in carrying out my examination I have followed all applicable Directions given by the Charity Commission under Section 145(5)(b) of the Act.

Independent examiner's statement

Since your charity's gross income exceeded £250,000 your examiner must be a member of a listed body. I can confirm that I am qualified to undertake the examination because I am a member of the Institute of Chartered Accountants in England and Wales, which is one of the listed bodies.

I have completed my examination. I confirm that no material matters have come to my attention in connection with the examination giving me cause to believe that in any material respect:

1.

accounting records were not kept in respect of the Trust as required by Section 130 of the Act; or


2.

the accounts do not accord with those records; or

3.

the accounts do not comply with the applicable requirements concerning the form and content of accounts set out in the Charities (Accounts and Reports) Regulations 2008 other than any requirement that the accounts give a true and fair view which is not a matter considered as part of an independent examination.

I have no concerns and have come across no other matters in connection with the examination to which attention should be drawn in this report in order to enable a proper understanding of the accounts to be reached.



Hazel Day BSc (Hons) FCA DChA

Tudor John Limited

Nightingale House

46-48 East Street

Epsom

Surrey

KT17 1HQ

Date:25/01/2024.....

DELIGHT					
Statement of Financial Activities for the year ended 31 August 2023					
		Unrestricted funds £	Restricted fund £	2023 Total funds £	2022 Total funds £
INCOME AND ENDOWMENTS FROM					
Donations and legacies		7,382	264,312	271,694	219,817
Charitable activities					
Delight programmes		87,935	-	87,935	73,470
Investment income	2	623	-	623	14
Other income		54,461	-	54,461	68,725
Total		150,401	264,312	414,713	362,026
EXPENDITURE ON					
Raising funds		31,858	-	31,858	22,978
Charitable activities					
Delight programmes		2,959	355,288	358,247	320,714
Total		34,817	355,288	390,105	343,692
NET INCOME/(EXPENDITURE)					
Transfers between funds	10	115,584 (90,976)	(90,976) 90,976	24,608 -	18,334 -
Net movement in funds		24,608	-	24,608	18,334
RECONCILIATION OF FUNDS					
Total funds brought forward		126,077	-	126,077	107,743
TOTAL FUNDS CARRIED FORWARD		150,685	-	150,685	126,077

45 | Annual Report & Financial Statements 2022-23


Annual Report & Financial Statements 2022-23 | 46

DELIGHT

Balance Sheet 31 August 2023

	Notes	Unrestricted funds £	Restricted fund £	2023 Total funds £	2022 Total funds £
CURRENT ASSETS					
Debtors	7	17,000	4,340	21,340	9,786
Cash at bank		215,668	42,736	258,404	206,427
		<u>232,668</u>	<u>47,076</u>	<u>279,744</u>	<u>216,213</u>
CREDITORS					
Amounts falling due within one year	8	(81,983)	(47,076)	(129,059)	(90,136)
		<u>150,685</u>	<u>-</u>	<u>150,685</u>	<u>126,077</u>
NET CURRENT ASSETS					
		<u>150,685</u>	<u>-</u>	<u>150,685</u>	<u>126,077</u>
TOTAL ASSETS LESS CURRENT LIABILITIES					
		<u>150,685</u>	<u>-</u>	<u>150,685</u>	<u>126,077</u>
NET ASSETS					
		<u>150,685</u>	<u>-</u>	<u>150,685</u>	<u>126,077</u>
FUNDS	10				
Unrestricted funds				150,685	126,077
TOTAL FUNDS				<u>150,685</u>	<u>126,077</u>

The financial statements were approved by the Board of Trustees and authorised for issue on
and were signed on its behalf by:


.....
V M Francis - Trustee

DELIGHT

Notes to the Financial Statements for the year ended 31 August 2023

1. ACCOUNTING POLICIES

BASIS OF PREPARING THE FINANCIAL STATEMENTS

The financial statements of the charity, which is a public benefit entity under FRS 102, have been prepared in accordance with the Charities SORP (FRS 102) 'Accounting and Reporting by Charities: Statement of Recommended Practice applicable to charities preparing their accounts in accordance with the Financial Reporting Standard applicable in the UK and Republic of Ireland (FRS 102) (effective 1 January 2019)', Financial Reporting Standard 102 'The Financial Reporting Standard applicable in the UK and Republic of Ireland' and the Charities Act 2011. The financial statements have been prepared under the historical cost convention.

INCOME

All income is recognised in the Statement of Financial Activities once the charity has entitlement to the funds, it is probable that the income will be received and the amount can be measured reliably.

EXPENDITURE

Liabilities are recognised as expenditure as soon as there is a legal or constructive obligation committing the charity to that expenditure, it is probable that a transfer of economic benefits will be required in settlement and the amount of the obligation can be measured reliably. Expenditure is accounted for on an accruals basis and has been classified under headings that aggregate all cost related to the category. Where costs cannot be directly attributed to particular headings they have been allocated to activities on a basis consistent with the use of resources.

TANGIBLE FIXED ASSETS

Depreciation is provided at the following annual rates in order to write off each asset over its estimated useful life.

Computer equipment - Straight line over 5 years

TAXATION

The charity is exempt from tax on its charitable activities.

FUND ACCOUNTING

Unrestricted funds can be used in accordance with the charitable objectives at the discretion of the trustees.

Restricted funds can only be used for particular restricted purposes within the objects of the charity. Restrictions arise when specified by the donor or when funds are raised for particular restricted purposes.

Further explanation of the nature and purpose of each fund is included in the notes to the financial statements.

HIRE PURCHASE AND LEASING COMMITMENTS

Rentals paid under operating leases are charged to the Statement of Financial Activities on a straight line basis over the period of the lease.

DELIGHT

Notes to the Financial Statements - continued
for the year ended 31 August 2023

2. INVESTMENT INCOME

	2023	2022
	£	£
Deposit account interest	623	14
	<u>623</u>	<u>14</u>

3. TRUSTEES' REMUNERATION AND BENEFITS

There were no trustees' remuneration or other benefits for the year ended 31 August 2023 nor for the year ended 31 August 2022.

TRUSTEES' EXPENSES

There were no trustees' expenses paid for the year ended 31 August 2023 nor for the year ended 31 August 2022.

4. STAFF COSTS

The average monthly number of employees during the year was as follows:

	2023	2022
Fundraising	1	1
Programmes	5	3
Administration	2	2
	<u>8</u>	<u>6</u>

No employees received emoluments in excess of £60,000.

5. COMPARATIVES FOR THE STATEMENT OF FINANCIAL ACTIVITIES

	Unrestricted funds	Restricted fund	Total funds
	£	£	£
INCOME AND ENDOWMENTS FROM			
Donations and legacies	21,749	198,068	219,817
Charitable activities			
Delight programmes	73,470	-	73,470
Investment income	14	-	14
Other income	68,725	-	68,725
Total	<u>163,958</u>	<u>198,068</u>	<u>362,026</u>
EXPENDITURE ON			
Raising funds	22,978	-	22,978
Charitable activities			
Delight programmes	62,918	257,796	320,714
Total	<u>85,896</u>	<u>257,796</u>	<u>343,692</u>

DELIGHT

Notes to the Financial Statements - continued
for the year ended 31 August 2023

5. COMPARATIVES FOR THE STATEMENT OF FINANCIAL ACTIVITIES - continued

	Unrestricted funds	Restricted fund	Total funds
	£	£	£
NET INCOME/(EXPENDITURE)	78,062	(59,728)	18,334
Transfers between funds	(59,728)	59,728	-
Net movement in funds	<u>18,334</u>	<u>-</u>	<u>18,334</u>
RECONCILIATION OF FUNDS			
Total funds brought forward	107,743	-	107,743
TOTAL FUNDS CARRIED FORWARD	<u>126,077</u>	<u>-</u>	<u>126,077</u>

6. TANGIBLE FIXED ASSETS

	Computer equipment
	£
COST	
At 1 September 2022	647
Disposals	(647)
At 31 August 2023	-
DEPRECIATION	
At 1 September 2022	647
Eliminated on disposal	(647)
At 31 August 2023	-
NET BOOK VALUE	
At 31 August 2023	-
At 31 August 2022	-

7. DEBTORS: AMOUNTS FALLING DUE WITHIN ONE YEAR

	2023	2022
	£	£
Prepayments and accrued income	21,340	9,786

DELIGHT

Notes to the Financial Statements - continued
for the year ended 31 August 2023

8. CREDITORS: AMOUNTS FALLING DUE WITHIN ONE YEAR

	2023	2022
	£	£
Trade creditors	7,006	9,644
Taxation and social security	-	1,545
Other creditors	122,053	78,947
	<u>129,059</u>	<u>90,136</u>

9. LEASING AGREEMENTS

Minimum lease payments under non-cancellable operating leases fall due as follows:

	2023	2022
	£	£
Within one year	2,625	9,000
Between one and five years	-	2,625
	<u>2,625</u>	<u>11,625</u>

10. MOVEMENT IN FUNDS

	At 1.9.22 £	Net movement in funds £	Transfers between funds £	At 31.8.23 £
Unrestricted funds				
General fund	14,022	115,584	(114,606)	15,000
Resilience designated fund	47,605	-	-	47,605
Pipeline development designated fund	64,450	-	23,630	88,080
	<u>126,077</u>	<u>115,584</u>	<u>(90,976)</u>	<u>150,685</u>
Restricted funds				
Programme funds	-	(90,976)	90,976	-
	<u>-</u>	<u>(90,976)</u>	<u>90,976</u>	<u>-</u>
TOTAL FUNDS	<u>126,077</u>	<u>24,608</u>	<u>-</u>	<u>150,685</u>

Net movement in funds, included in the above are as follows:

	Incoming resources £	Resources expended £	Movement in funds £
Unrestricted funds			
General fund	150,401	(34,817)	115,584
Restricted funds			
Programme funds	264,312	(355,288)	(90,976)
	<u>414,713</u>	<u>(390,105)</u>	<u>24,608</u>
TOTAL FUNDS	<u>414,713</u>	<u>(390,105)</u>	<u>24,608</u>

DELIGHT

Notes to the Financial Statements - continued
for the year ended 31 August 2023

10. MOVEMENT IN FUNDS - continued

Comparatives for movement in funds

	At 1.9.21 £	Net movement in funds £	Transfers between funds £	At 31.8.22 £
Unrestricted funds				
General fund	14,793	78,062	(78,833)	14,022
Resilience designated fund	33,500	-	14,105	47,605
Pipeline development designated fund	59,450	-	5,000	64,450
	<u>107,743</u>	<u>78,062</u>	<u>(59,728)</u>	<u>126,077</u>
Restricted funds				
Programme funds	-	(59,728)	59,728	-
	<u>-</u>	<u>(59,728)</u>	<u>59,728</u>	<u>-</u>
TOTAL FUNDS	<u>107,743</u>	<u>18,334</u>	<u>-</u>	<u>126,077</u>

Comparative net movement in funds, included in the above are as follows:

	Incoming resources £	Resources expended £	Movement in funds £
Unrestricted funds			
General fund	163,958	(85,896)	78,062
Restricted funds			
Programme funds	198,068	(257,796)	(59,728)
	<u>362,026</u>	<u>(343,692)</u>	<u>18,334</u>
TOTAL FUNDS	<u>362,026</u>	<u>(343,692)</u>	<u>18,334</u>

11. RELATED PARTY DISCLOSURES

There were no related party transactions for the year ended 31 August 2023.

DELIGHT

Detailed Statement of Financial Activities
for the year ended 31 August 2023

	2023 £	2022 £
INCOME AND ENDOWMENTS		
Donations and legacies		
Donations	7,384	3,605
Grants	264,310	216,212
	<u>271,694</u>	<u>219,817</u>
Investment income		
Deposit account interest	623	14
Charitable activities		
Schools contribution	87,935	73,470
Other income		
Bespoke/ fee earning work	54,461	68,725
	<u>414,713</u>	<u>362,026</u>
Total incoming resources		
EXPENDITURE		
Raising donations and legacies		
Wages	31,244	18,939
Filming costs	368	842
Sundries	246	3,197
	<u>31,858</u>	<u>22,978</u>
Charitable activities		
Staff costs	105,850	85,763
Other operating leases	7,500	4,500
Postage and stationery	401	1,156
Sundries	49	167
Arts partner fees	104,807	77,979
Coach and vehicle hire	5,965	6,044
Photography	2,257	2,159
Film and multimedia resources	6,660	30,709
Other project materials	25,404	24,225
Evaluation	10,682	4,347
Teacher CPD	2,195	2,301
Travel and parking	3,588	3,223
Arts award	7,555	8,689
Design and print	4,566	6,923
	<u>287,479</u>	<u>258,185</u>

This page does not form part of the statutory financial statements

DELIGHT

Detailed Statement of Financial Activities
for the year ended 31 August 2023

	2023 £	2022 £
Support costs		
Management		
Staff costs	44,843	36,749
Other operating leases	6,824	4,500
Rates and water	828	788
Insurance	1,094	827
Light and heat	2,593	1,488
Telephone	424	457
Postage and stationery	1,324	1,385
Sundries	2,128	3,746
Repairs and maintenance	924	708
IT and web costs	6,818	8,491
Travel	-	716
	<u>67,800</u>	<u>59,855</u>
Finance		
Bank charges	8	6
Governance costs		
Accountancy and legal fees	2,960	2,668
	<u>390,105</u>	<u>343,692</u>
Total resources expended		
Net income	<u>24,608</u>	<u>18,334</u>

This page does not form part of the statutory financial statements

2022/23 in Summary

ALL CHILDREN	% increase for 1,543 children
Enjoyed taking part	85.8%
Feel proud	82.4%
Want to do more art/dance/drama	71.2%
Confidence	54.6%
Know they could be an actor/dancer/artist	48.6%
Wellbeing	42.3%
Resilience	37.5%

PUPIL PREMIUM	% increase for 236 children
Artistic outcomes	92.4%
Social outcomes	90.7%
Academic outcomes	74.2%
Parent engagement	50.4%

PARENTS	Questionnaires completed by 837 parents
My child has talked about their Delight experience at home	95.0%
I feel more encouraged to enjoy art/dance/performance with my child on a regular basis	87.0%
I have seen a positive difference in my child's social and emotional skills since having taken part in Delight	72.6%
I have noticed an increase in self-confidence in my child since taking part in Delight	74.4%
Believe Delight is a positive experience for my child	95.7%

TEACHERS	% increase for 95 teachers
Increased art/dance/drama confidence	88.1%
Use in future teaching	91.0%
Adapt new skills to wider curriculum	23.9%

Detailed Pupil Premium Data

Delight in the Woods Number of children surveyed: 47	
Social & Emotional Wellbeing	
Engagement with Learning	57.4%
Resilience	63.8%
Self-worth	53.2%
Pride	66.0%
Confidence	59.6%
Communication	55.3%
Team work	61.7%
Learning Engagement	
Speech	55.3%
Concepts	46.8%
Words and phrases	53.2%
New vocabulary	55.3%
Decode	57.4%
Interpretation	59.6%
Explaining	55.3%
Following instructions	63.8%
Creative Development	
Characterisation	76.6%
Story Writing Technique	63.8%
Storytelling Confidence	76.6%
Parent and Carer Engagement	
Teacher contact	38.8%
Learning engagement	46.8%
Home support	40.4%
Attending events	44.7%

Delight in Dance Croydon Number of children surveyed: 12	
Social & Emotional Wellbeing	
Engagement with Learning	50.0%
Resilience	83.3%
Self-worth	66.7%
Pride	41.7%
Confidence	75.0%
Communication	50.0%
Team work	66.7%
Learning Engagement	
Speech	50.0%
Concepts	41.7%
Words and phrases	33.3%
New vocabulary	41.7%
Decode	58.3%
Interpretation	50.0%
Explaining	33.3%
Following instructions	41.7%
Creative Development	
Movement Literacy	91.7%
Mastery of Movement	91.7%
Performance Confidence	83.3%
Parent and Carer Engagement	
Teacher contact	25.0%
Learning engagement	25.0%
Home support	25.0%
Attending events	50.0%

Delight in Dance Surrey Number of children surveyed: 27	
Social & Emotional Wellbeing	
Engagement with Learning	74.1%
Resilience	74.1%
Self-worth	70.4%
Pride	81.5%
Confidence	85.2%
Communication	74.1%
Team work	77.8%
Learning Engagement	
Speech	55.6%
Concepts	51.9%
Words and phrases	48.1%
New vocabulary	48.1%
Decode	51.9%
Interpretation	59.3%
Explaining	55.6%
Following instructions	51.9%
Creative Development	
Movement Literacy	88.9%
Mastery of Movement	88.9%
Performance Confidence	85.2%
Parent and Carer Engagement	
Teacher contact	33.3%
Learning engagement	33.3%
Home support	33.3%
Attending events	44.4%

Delight in Art Watts Number of children surveyed: 27	
Social & Emotional Wellbeing	
Engagement with Learning	51.9%
Resilience	66.7%
Self-worth	70.4%
Pride	70.4%
Confidence	66.7%
Communication	48.1%
Team work	55.6%
Learning Engagement	
Speech	37.0%
Concepts	40.7%
Words and phrases	48.1%
New vocabulary	40.7%
Decode	44.4%
Interpretation	59.3%
Explaining	55.6%
Following instructions	48.1%
Creative Development	
Creative Skills to use art materials	77.8%
Creative self expression	74.1%
Confident to create art and show others	77.8%
Parent and Carer Engagement	
Teacher contact	22.2%
Learning engagement	25.9%
Home support	18.9%
Attending events	48.1%

Delight in Art Rainforest Retreat Number of children surveyed: 47	
Social & Emotional Wellbeing	
Engagement with Learning	53.2%
Resilience	68.1%
Self-worth	57.4%
Pride	83.0%
Confidence	51.1%
Communication	44.7%
Team work	59.6%
Learning Engagement	
Speech	38.3%
Concepts	42.6%
Words and phrases	36.2%
New vocabulary	29.8%
Decode	34.0%
Interpretation	29.8%
Explaining	42.6%
Following instructions	38.3%
Creative Development	
Creative Skills to use art materials	66.0%
Creative self expression	83.0%
Confident to create art and show others	85.1%
Parent and Carer Engagement	
Teacher contact	27.7%
Learning engagement	31.9%
Home support	34.0%
Attending events	51.1%

Rainforest Retreat Teacher Led Number of children surveyed: 11	
Social & Emotional Wellbeing	
Engagement with Learning	36.4%
Resilience	81.8%
Self-worth	72.7%
Pride	100.0%
Confidence	90.9%
Communication	63.6%
Team work	72.7%
Learning Engagement	
Speech	45.5%
Concepts	54.5%
Words and phrases	90.9%
New vocabulary	81.8%
Decode	72.7%
Interpretation	81.8%
Explaining	90.9%
Following instructions	72.7%
Creative Development	
Creative Skills to use art materials	100.0%
Creative self expression	72.7%
Confident to create art and show others	81.8%
Parent and Carer Engagement	
Teacher contact	36.4%
Learning engagement	63.6%
Home support	36.4%
Attending events	90.9%

Delight in Art Out of this World Number of children surveyed: 9	
Social & Emotional Wellbeing	
Engagement with Learning	77.8%
Resilience	55.6%
Self-worth	55.6%
Pride	77.8%
Confidence	44.4%
Communication	44.4%
Team work	66.7%
Learning Engagement	
Speech	33.3%
Concepts	55.6%
Words and phrases	44.4%
New vocabulary	77.8%
Decode	55.6%
Interpretation	44.4%
Explaining	66.7%
Following instructions	66.7%
Creative Development	
Creative Skills to use art materials	88.9%
Creative self expression	100.0%
Confident to create art and show others	88.9%
Parent and Carer Engagement	
Teacher contact	44.4%
Learning engagement	66.7%
Home support	66.7%
Attending events	77.8%

Delight in Shakespeare Number of children surveyed: 56	
Social & Emotional Wellbeing	
Engagement with Learning	57.1%
Resilience	69.6%
Self-worth	58.9%
Pride	62.5%
Confidence	66.1%
Communication	37.5%
Team work	53.6%
Learning Engagement	
Speech	50.0%
Concepts	48.2%
Words and phrases	60.7%
New vocabulary	53.6%
Decode	50.0%
Interpretation	48.2%
Explaining	50.0%
Following instructions	48.2%
Creative Development	
Characterisation	73.2%
Mastery of Theatre Techniques	82.1%
Performance Confidence	83.9%
Parent and Carer Engagement	
Teacher contact	39.3%
Learning engagement	37.5%
Home support	32.1%
Attending events	55.4%

THANK YOU!

We extend our heartfelt thanks to everyone who has been part of our work over the past year. Thank you for your enthusiasm, commitment and generosity.

Funders



Arts partners and creative team



Published by Delight
9b Station Avenue, Caterham,
Surrey, CR3 6LB
info@delightcharity.org.uk
delightcharity.org.uk

Registered Charity Number: 1159567

First published 2023 © Delight 2023

This publication is copyright.
For copying, prior permission must
be obtained from the publisher.

Delight photography by
Alex Brenner and Photographise
Delight illustration by Hannah Maiya-Mills
Design by Sharp Pencil Design
Branding by Alex Swain © ByAlex



Please contact us to find out more about becoming involved in Delight's programmes:

EMAIL info@delightcharity.org.uk

TEL **01883 818300**

WEBSITE delightcharity.org.uk

    @Delightcharity