

West London and Earls Court Free School Primaries PTA

England & Wales · Charity number 1159396

Details

Other names WEST LONDON FREE SCHOOL PRIMARY PTA, WLFSP-PTA

Status Registered

Legal form Other

Registered 2014-11-28

Register [View on the Charity Commission register](#)

Contact

Address c/o West London Free School Primary
Cambridge Grove
Hammersmith
London
W6 0LB

Phone 02087419967

Email pta@wlfs-primary.org

Website <https://www.wlfs-primary.org/Parents/Parent-Teaching-Association-PTA/>

Activities

Objects: TO ADVANCE THE EDUCATION OF PUPILS IN THE SCHOOL IN PARTICULAR BY:DEVELOPING EFFECTIVE RELATIONSHIPS BETWEEN THE STAFF PARENTS AND OTHERS ASSOCIATED WITH THE SCHOOL;ENGAGING IN ACTIVITIES OR PROVIDING FACILITIES OR EQUIPMENT WHICH SUPPORT THE SCHOOL AND ADVANCE THE EDUCATION OF THE PUPILS.

Activities: The role of the the West London Free School Primary PTA is to raise funds for the school. We do this through a varied mix of events and initiatives.

Classification

- **How:** Makes Grants To Organisations
- **What:** General Charitable Purposes
- **Who:** Children/young People

Geography

- Hammersmith And Fulham

Finances

Period end	Income	Expenditure	Assets	Employees
2025-07-31	-	-	-	-
2024-07-31	£29,521	£18,511	-	-
2023-07-31	£31,549	£40,305	-	-
2022-07-31	£25,082	£18,435	-	-
2021-07-31	£13,071	£18,357	-	-
2020-07-31	£22,768	£24,418	-	-

Trustees

Name	Role	Appointed
VJERA MAGDALENIC-MOUSSAVI	Chair	2024-10-24
Akilah Weekes		2025-07-07
Amanpreet Iswaran		2025-09-09
Mahwish Ahmad		2025-07-07
Mariam Khan		2024-10-24
Murat Ercin		2025-07-07

West London and Earls Court Free School Primaries PTA

England & Wales - Charity number 1159396

Accounts



PTA Meeting 28th April 2025





Agenda

- PTA Constitution Update
- PTA Treasury Report 2023/24
- School Landscaping Project
- Upcoming Events
- Spring Fair Feedback





PTA Constitution

- Governing document of the PTA charity
- Is submitted to the Charity Commission
- Everything we do as a team is bound by the document
- PTA Officers (Chair, Vice Chair, Secretary, Treasurer) are trustees of the Charity, registered with Charities Commission
- Collectively we need to act in the interest of the Charity and follow best practice





PTA Constitution – Change Why?

- The document has not been properly revised since incorporation in November 2014
- Much smaller school
 - One year group, 60 children
 - Seven years groups – 630 children across two schools
- Not all points are clearly laid out to help us understand how to run and govern the charity
- Does not address the structure to enable us to run our activities smoothly and with less pressure and stress on a very small group of people
- Adds pre-defined annual costs for contribution to the school community to be reviewed every three years (commitment of costs)





PTA Constitution – Change How?

- Proposed structure gives a well defined set of roles
- It gives every voting member a specific responsibility
- The broader PTA members can get involved with specific activities of interest/knowledge base to play on their strengths and ability to commit time.
- Limiting number of voting members to a maximum of 12 parents (and 14 in total)
- Simplifying overall language to make more accessible to the community at large





PTA Constitution – Differences by Clauses

	Old	New	Difference
	1 Association definition	Association definition	same
	2 Objects	Objects	same
	3 Powers of the Association	The Committee membership	Specific details on how the structure works
	4 Membership	Powers of Association	defining ring fencing funding
	5 General meetings	Membership	Simplified rules on membership of the association including removal
	6 The Committee	General Meetings	mostly the same as clause 5 in the original , reducing notice period from 21 days to 14
	7 Committee Meetings	Committee Meetings	minor changes to define quorum
	8 Powers of the Committee	Powers of the Committee	expanded with specifics on safeguarded funds for school annually
	9 Property and Funds	Records and Accounts	old clause 9 integrated across 4 and 8. Simplified definition of records and accounts
	10 Records and Accounts	Financial Year definition	Defining more specifically the financial year and rules for withdrawal of funds.
	11 Notices	Notices	same
	12 Amendments	Amendments	same
	13 Disolution	Disolution	same





PTA Constitution

Questions, comments, proposals?





PTA Treasury Report 2023/24

- We made £26k that year + £3k donations & interest
- We spent £15.5k, half of which (£8k) went on school funding (trips, workshops, Y6) and £7k on fundraising and general overheads.
- In total £11k surplus that year + already £65k in cash – too much
- We're spending more this year
- Aim is to end of year with small surplus (and a plan)





PTA Treasury Report 2023/24

Balance Sheet As of July 31, 2024

	TOTAL	
	AS OF JUL 31, 2024	AS OF JUL 31, 2023 (PY)
Fixed Asset		
Total Fixed Asset		
Cash at bank and in hand		
Business Community Current Account	12,705.79	419.15
Business Instant Access Account	51,997.36	53,274.23
Total Cash at bank and in hand	£64,703.15	£53,693.38
NET CURRENT ASSETS	£64,703.15	£53,693.38
Creditors: amounts falling due within one year		
Current Liabilities		
VAT Control	0.00	0.00
Total Current Liabilities	£0.00	£0.00
Total Creditors: amounts falling due within one year	£0.00	£0.00
NET CURRENT ASSETS (LIABILITIES)	£64,703.15	£53,693.38
TOTAL ASSETS LESS CURRENT LIABILITIES	£64,703.15	£53,693.38
TOTAL NET ASSETS (LIABILITIES)	£64,703.15	£53,693.38
Charity funds		
Opening Balance Equity	55,804.16	55,804.16
Retained Earnings	-2,110.78	6,644.76
Surplus/(Deficit)	11,009.77	-8,755.54
Total Charity funds	£64,703.15	£53,693.38





PTA Treasury Report 2023/24

Financial Activities

August 2023 - July 2024

	TOTAL	
	AUG 2023 - JUL 2024	AUG 2022 - JUL 2023 (PY)
Income	£26,040.25	£30,196.62
Cost of Sales	£2,170.97	£5,770.81
TOTAL	£23,869.28	£24,425.81
Expenditures		
Advertising/Promotional	1,157.09	
Office/General Administrative Expenses	3,903.96	1,389.64
Quiz Night Expenses		660.00
School Funding	8,190.36	30,495.60
Staff Wellbeing-WLFS ECFS	-376.77	
Summer Fair Expenditures	34.68	
Summer Fair General Expenditures	476.06	625.07
Travel and Accommodation	23.25	
Winter Fair General Expenditures	2,075.04	1,363.52
Workshops- Winter Fair	66.70	
Total Expenditures	£15,550.37	£34,533.83
NET OPERATING INCOME	£8,318.91	£ -10,108.02
Other Income	£3,480.56	£1,352.48
Other Expenditures	£789.70	£0.00
NET OTHER INCOME	£2,690.86	£1,352.48
NET INCOME/(EXPENDITURE)	£11,009.77	£ -8,755.54





School Landscaping Project





Upcoming Events

Event	Date
International Food Day & 5-a-Side Football Tournament	Thursday 1 May
Movie Night / Thank You Drinks	Thursday 22 May
Incoming Reception Parent Info Event	Thursday 5 June
Summer Fair	Saturday 28 June
Y6 Disco	Thursday 10 July





Spring Fair Update

Revenue

- Total raised from event (pre sales on Arbor + on the day tokens and cash sales) = £7.2k
- Sponsorship = £500 external (+ the £1k PTA 'funding')
- Total revenue from event (including external sponsors) = £7.7k

Costs

- Total costs = £1.6k

Profit

- Total net raised for PTA = **£5.6k AMAZING** for something not in the plan (including £1k from pre-paid activities)





Spring Fair Learning/Feedback

Learning

- Ticketing/token collection – better system needed (pre-booking, more card machines/locations to purchase/collect)
- Volunteering (more volunteers through classes, rotas, more information given)
- Only having 2 fairs a year
- No week-day fairs (The Club / working parents)
- Inclusiveness (non-religious events)
- Requests for parent donations
- Better photobooth
- Better signage (map)
- Ending the fair on time (to allow for cleaning)
- Less sugar
- Stamps kept getting lost

Successes

- Football (pre-booked slots suggested)
- Lovely decorations
- Ice cream van (brought in £114)
- Selling in advance meant people bought more
- Food got praised, some requests for more options (kebab, hamburgers...)
- Face painting (pre-booked slots suggested)
- Henna

Suggestions

- Disco (for future)
- PTA to purchase knives
- More games/competition/ports
- A quiet area
- Cultural show





AOB



WLFSP PTA

Financial Activities

August 2023 - July 2024

	TOTAL	
	AUG 2023 - JUL 2024	AUG 2022 - JUL 2023 (PP)
Income		
Autumn Fair	12,913.84	
Charitable activities	6,925.68	30,196.62
Services	1,425.54	
Summer Fair	4,527.25	
Winter Fair Sponsorship	247.94	
Total Income	£26,040.25	£30,196.62
Cost of Sales	£2,170.97	£5,770.81
TOTAL	£23,869.28	£24,425.81
Expenditures		
Advertising/Promotional	1,157.09	
Office/General Administrative Expenses	3,903.96	1,389.64
Quiz Night Expenses		660.00
School Funding	8,190.36	30,495.60
Staff Wellbeing-WLFS ECFS	-376.77	
Summer Fair Expenditures	34.68	
Summer Fair General Expenditures	476.06	625.07
Travel and Accommodation	23.25	
Winter Fair General Expenditures	2,075.04	1,363.52
Workshops- Winter Fair	66.70	
Total Expenditures	£15,550.37	£34,533.83
NET OPERATING INCOME	£8,318.91	£ -10,108.02
Other Income		
Amazon Smile Donation		268.78
CAF Ongoing Credit	311.37	526.75
Donations	2,546.06	282.72
Interest earned	623.13	274.23
Total Other Income	£3,480.56	£1,352.48
Other Expenditures	£789.70	£0.00
NET OTHER INCOME	£2,690.86	£1,352.48
NET INCOME/(EXPENDITURE)	£11,009.77	£ -8,755.54

WLFSP PTA

Balance Sheet

As of July 31, 2024

	TOTAL	
	AS OF JUL 31, 2024	AS OF JUL 31, 2023 (PP)
Fixed Asset		
Total Fixed Asset		
Cash at bank and in hand		
Business Community Current Account	12,705.79	419.15
Business Instant Access Account	51,997.36	53,274.23
Total Cash at bank and in hand	£64,703.15	£53,693.38
NET CURRENT ASSETS	£64,703.15	£53,693.38
Creditors: amounts falling due within one year	£0.00	£0.00
NET CURRENT ASSETS (LIABILITIES)	£64,703.15	£53,693.38
TOTAL ASSETS LESS CURRENT LIABILITIES	£64,703.15	£53,693.38
TOTAL NET ASSETS (LIABILITIES)	£64,703.15	£53,693.38
Charity funds		
Opening Balance Equity	55,804.16	55,804.16
Retained Earnings	-2,110.78	6,644.76
Surplus/(Deficit)	11,009.77	-8,755.54
Total Charity funds	£64,703.15	£53,693.38

PTA Constitution

➤ Objectives

- Develop the relationship between the staff, parents/ carers and others associated with the West London Free School and Earl's Court Free School Primaries.
- To organize and promote activities that support and advance the welfare and education of the pupils attending either school

➤ Membership

- All parents/ carers of children attending West London Free School and Earl's Court Free School Primaries and all academic staff (including Admin), are automatically members of the PTA.
- In addition, there is an elected committee made up of a **Core Committee** – PTA Chair; PTA Vice-Chair; Secretary; Financial Controls and Audit; Financial Governance & Accounts; Committee Treasury; at least one teacher representative and at least ten voting members.
- Committee term of 1 year

PTA Constitution

➤ Meetings

- All members can attend meetings
- AGM annually (quorum 8)
- Committees meet at least termly (quorum one third committee)
- Committee members have one vote
- Secretary minutes meetings, actions and decisions/approvals

➤ Finance

- The Committee Treasurer shall be responsible for keeping accurate records of the financial transactions of the Association. Finances will be managed in line with the WLFSP PTA Finance Controls and Procedures document.



Section A Independent Examiner's Report

Report to the trustees

Charity Name West London and Earl's Court Free School Primaries PTA
--

On accounts for the year ended

31 July 2024	Charity no (if any)	1159396
--------------	----------------------------	---------

Set out on pages

1-17

I report to the trustees on my examination of the accounts of the above charity ("the Trust") for the year ended 31/07/2024.

Responsibilities and basis of report

As the charity's trustees, you are responsible for the preparation of the accounts in accordance with the requirements of the Charities Act 2011 ("the Act").


I report in respect of my examination of the Trust's accounts carried out under section 145 of the 2011 Act and in carrying out my examination, I have followed all the applicable Directions given by the Charity Commission under section 145(5)(b) of the Act.

Independent examiner's statement

I have completed my examination. I confirm that no material matters have come to my attention in connection with the examination which gives me cause to believe that in, any material respect:

- the accounting records were not kept in accordance with section 130 of the Charities Act; or
- the accounts did not accord with the accounting records; or
- the accounts did not comply with the applicable requirements concerning the form and content of accounts set out in the Charities (Accounts and Reports) Regulations 2008 other than any requirement that the accounts give a 'true and fair' view which is not a matter considered as part of an independent examination.

I have no concerns and have come across no other matters in connection with the examination to which attention should be drawn in this report in order to enable a proper understanding of the accounts to be reached.

Signed:  **Date:** 23/05/2025

Name: Craig Nightingale

Relevant professional qualification(s) or body (if any): ACA

Address: 40 Russell Road
Buckhurst Hill
IG9 5QE

Only complete if the examiner needs to highlight material matters of concern (see CC32, Independent examination of charity accounts: directions and guidance for examiners).

Give here brief details of any items that the examiner wishes to disclose.

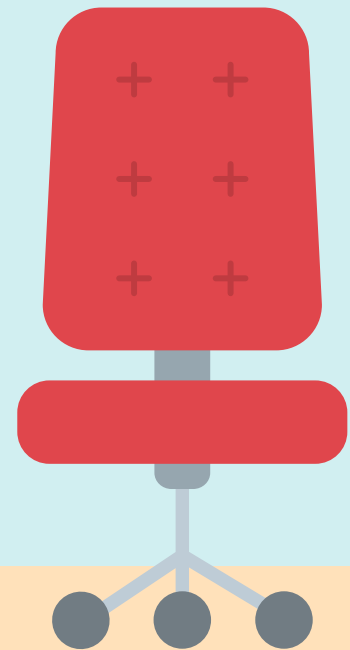
None.

West London and Earls Court Free School Primaries PTA

England & Wales - Charity number 1159396

Accounts

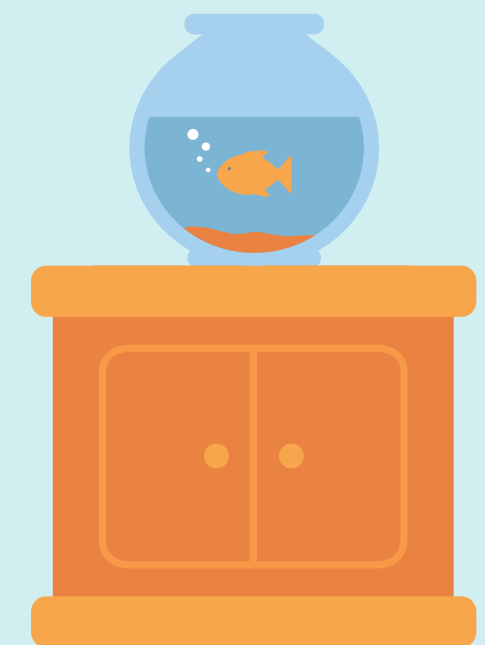
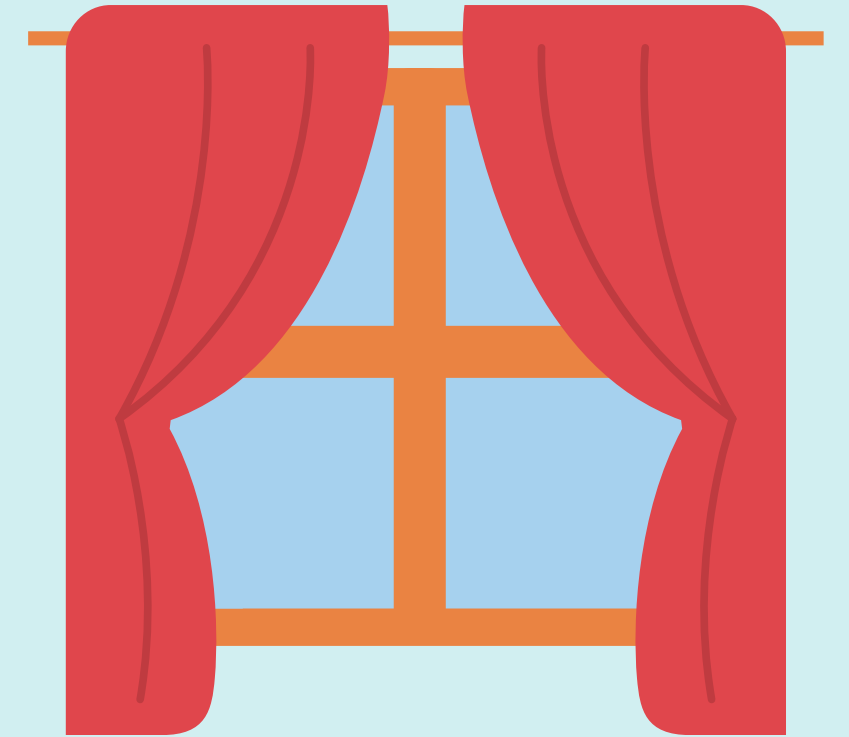
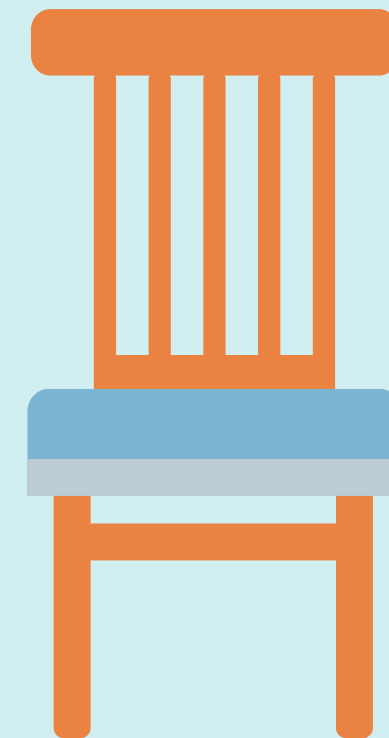
PTA AGM





AGENDA

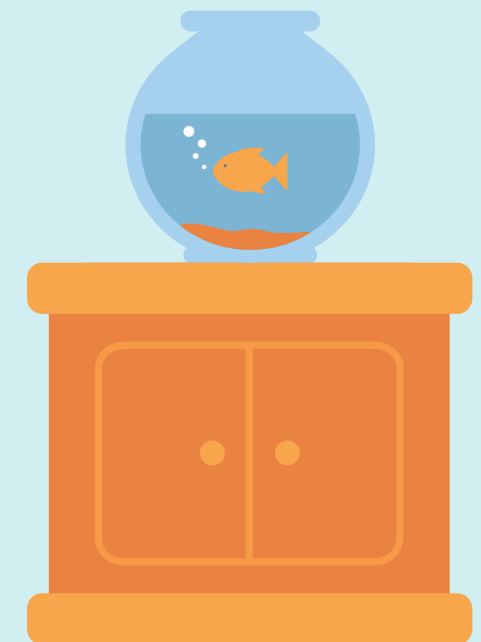
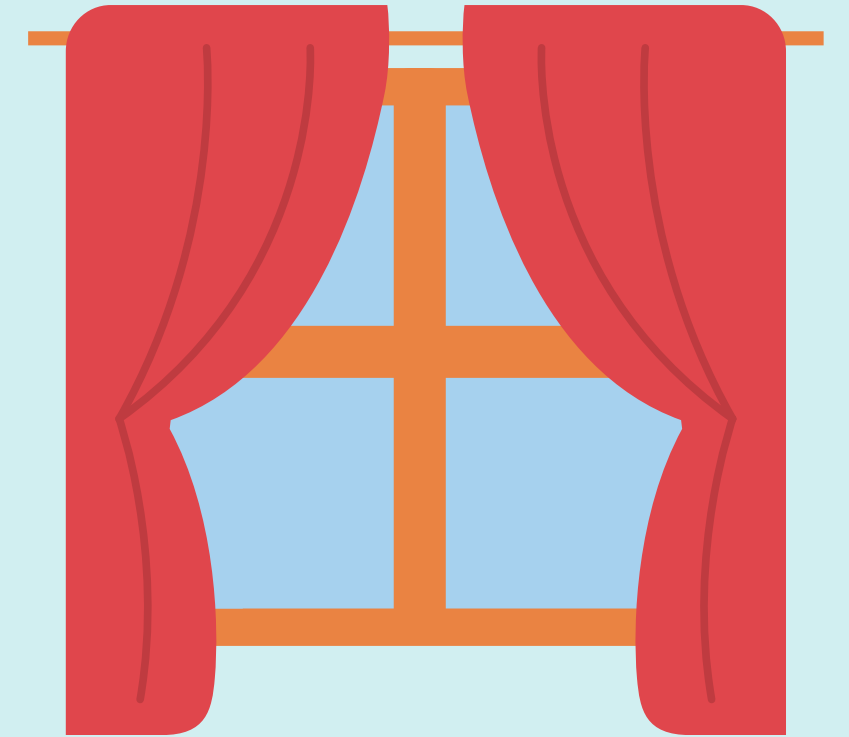
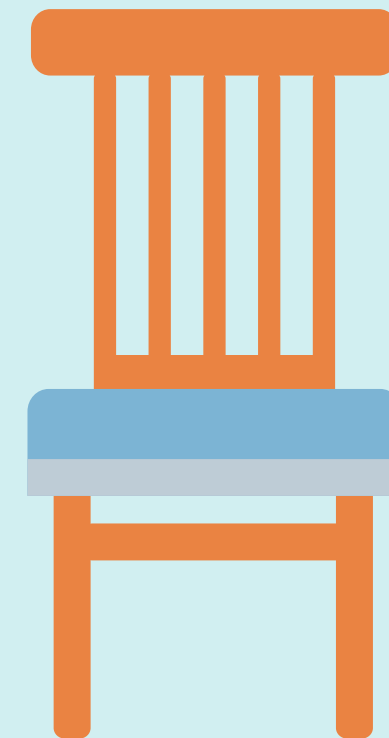
- Apologies
- Chair report
- Treasurer report
- Election of committee members
- Any other business





CHAIR REPORT

- Role of the PTA and Objectives
- Structure
- Decision Making
- Highlights
- Thank you
- Plans!

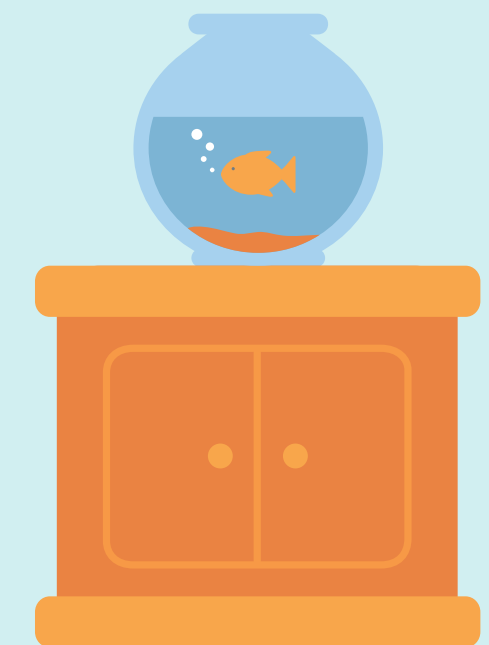
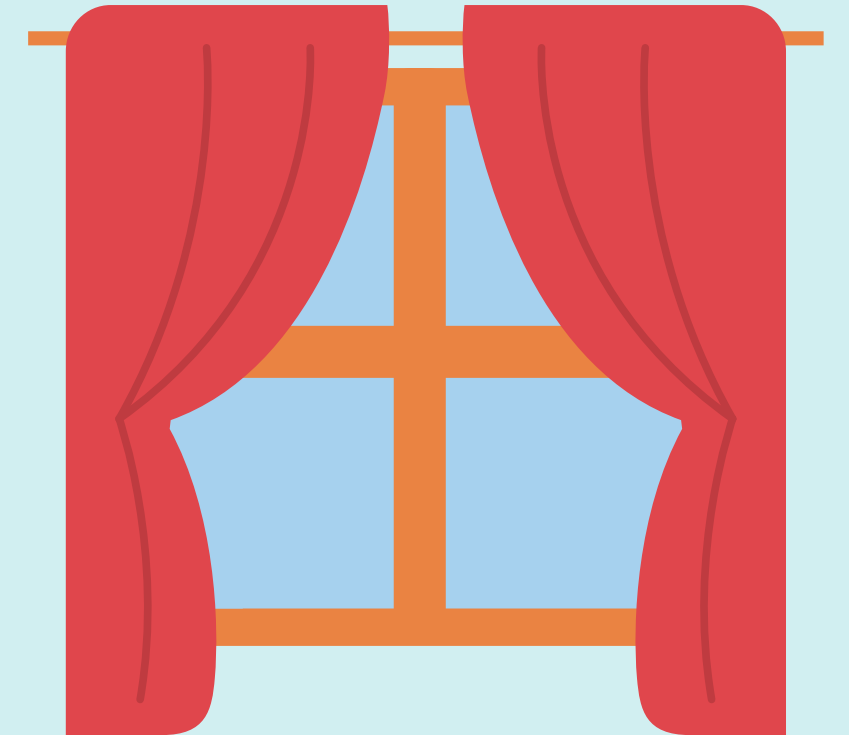




OBJECTIVES

**DEVELOPING EFFECTIVE RELATIONSHIPS
BETWEEN THE STAFF, PARENTS AND
OTHERS ASSOCIATED WITH THE SCHOOL**

**ENGAGING IN ACTIVITIES OR PROVIDING
FACILITIES OR EQUIPMENT WHICH
SUPPORT THE SCHOOL AND ADVANCE THE
EDUCATION OF PUPILS**





STRUCTURE

ALL TEACHERS, NON TEACHING STAFF, PARENTS AND CARERS ARE MEMBERS OF THE PTA

CLASS REPS: SUPPORT THE SCHOOL AND THE PTA AS MEMBERS

COMMITTEE

ORDINARY VOTING MEMBERS OTE

OFFICERS OTE

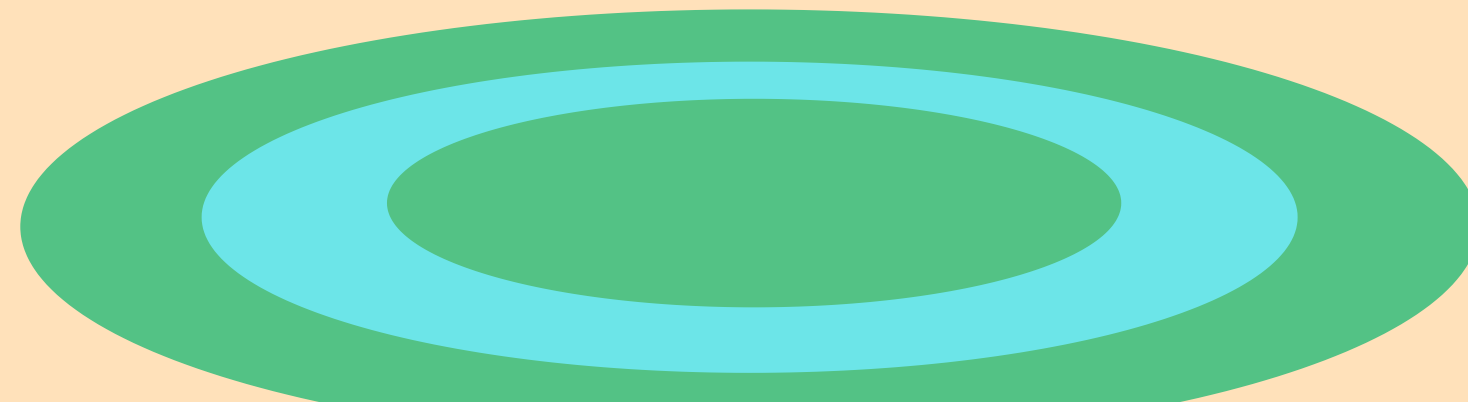




DECISION MAKING

FUNDING REQUESTS ARE SUBMITTED AT COMMITTEE MEETINGS

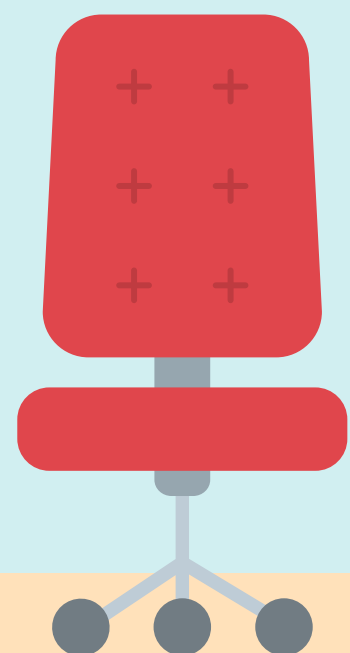
ANY COMMITTEE MEMBER CAN PUT FORWARD A REQUEST, HOWEVER REQUESTS USUALLY COME DIRECTLY FROM THE SCHOOL



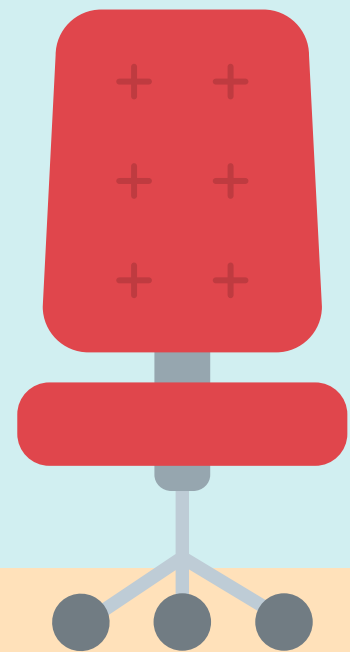
**HIGHLIGHTS
2022/2023**



**THANK
YOU !**



PLANS!





TREASURER REPORT

OPENING
BALANCE

£62.4K

RAISED THIS
YEAR

£31.5K

COSTS
INCURRED

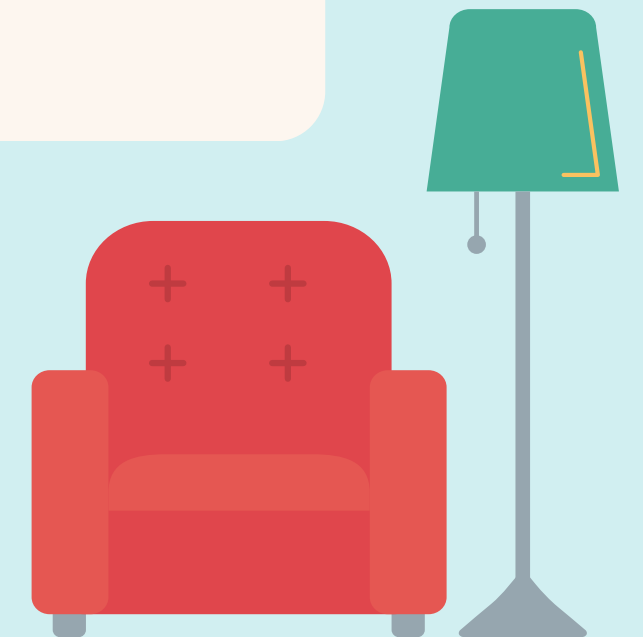
£9.8K

SCHOOL
PURCHASES

£30.5K

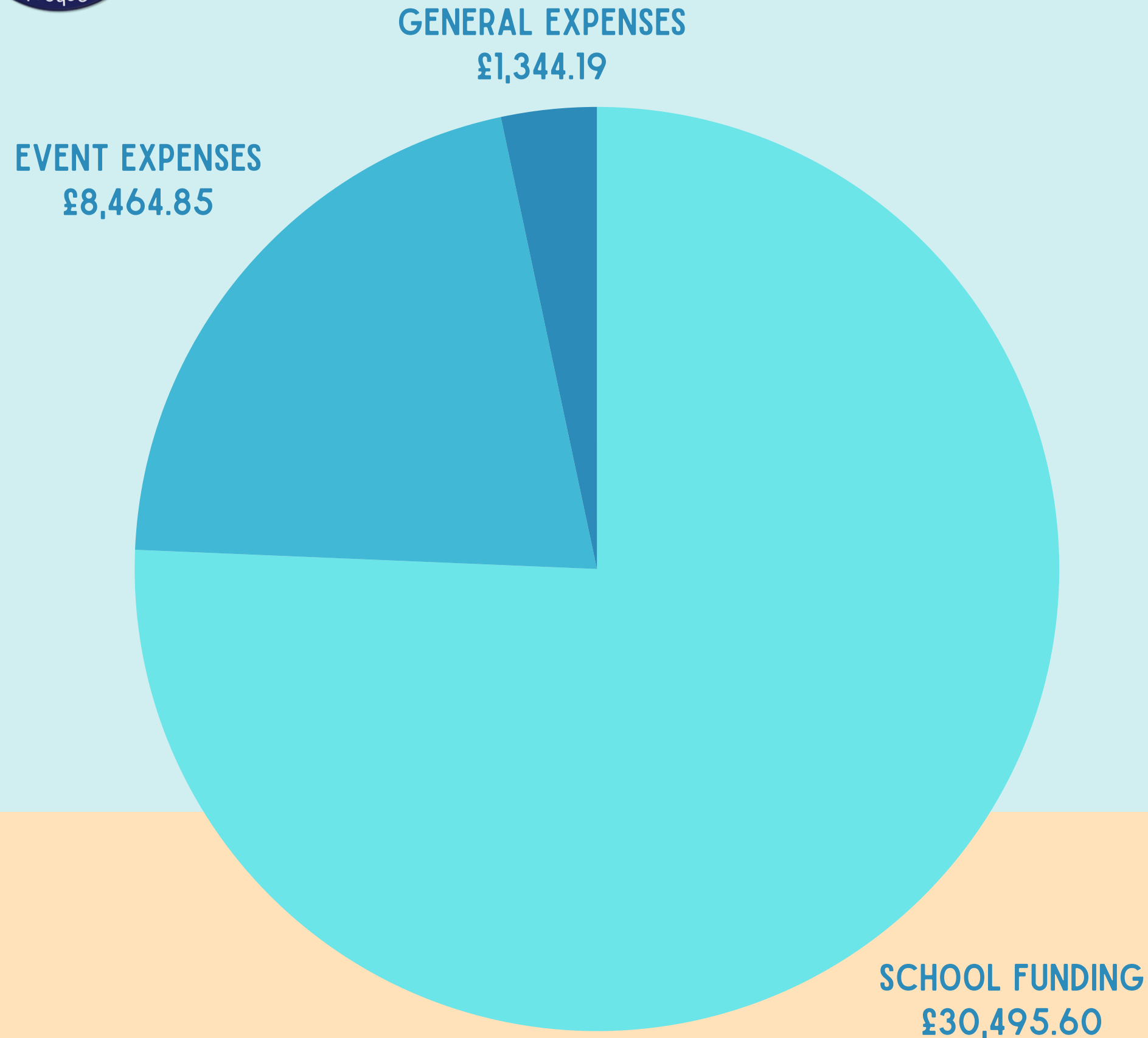
CURRENT
BALANCE

£53.7K





EXPENDITURE



SCHOOL FUNDING

- FRENCH PLAY DAY
- LIBRARY CONTRIBUTION
- OUR WORLD, OUR FUTURE, DRAMA WORKSHOPS
- STAFF WELLBEING
- WORLD BOOK DAY AUTHOR VISITS
- YEAR 6 LEAVERS CELEBRATIONS
- LIFE BUS
- WOODEN TABLES AND CHAIRS
- FOLDING TABLES
- REMOVAL OF THE OLD "DIRT" FLOWER BED

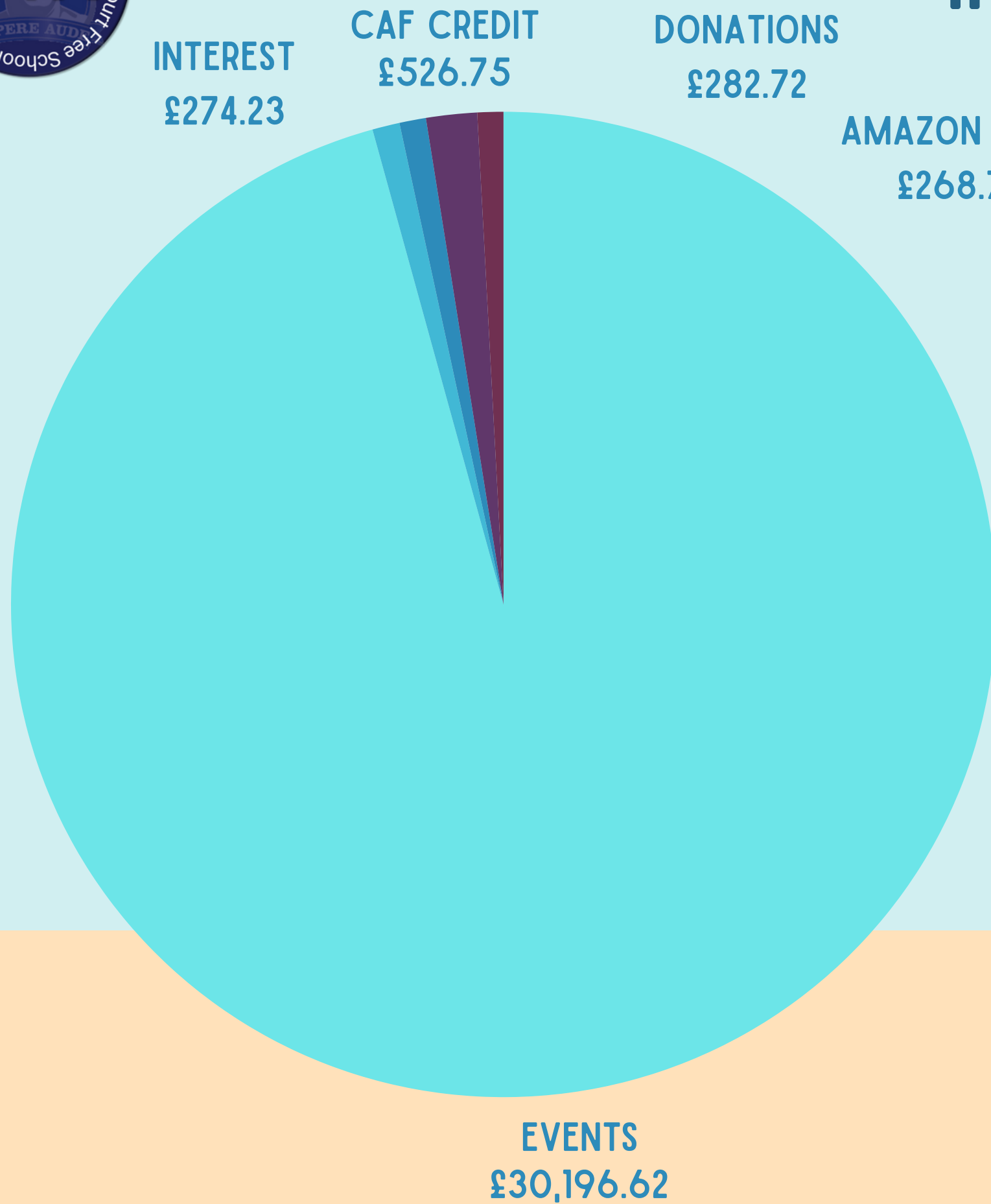
OTHER ACTIVITIES THAT WERE APPROVED BUT FUNDED ELSEWHERE

- SHAKESPEARE GLOBE WORKSHOPS
- SCIENCE WORKSHOPS
- HIRE OF ENCLOSED SPACE AT RAVENSCOURT PARK
- ADDITIONAL SWIMMING LESSONS





INCOME

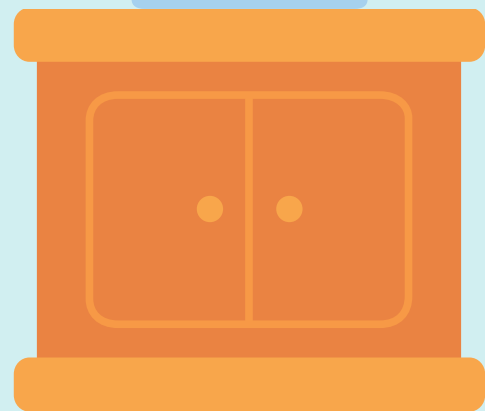


EVENTS

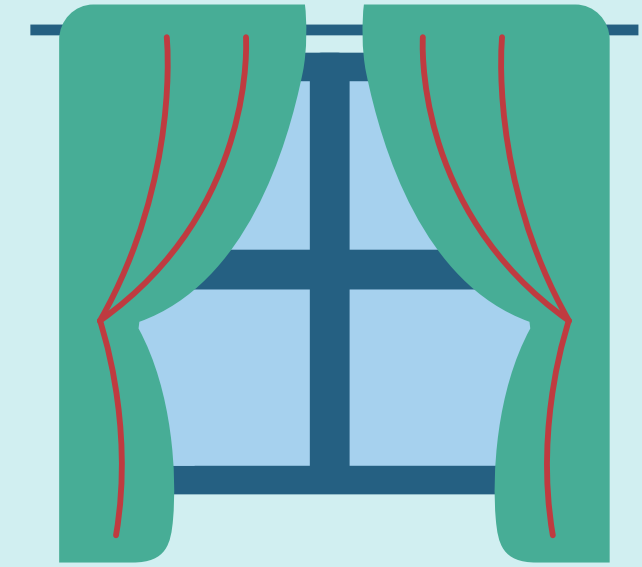
- CARDS AND MUGS
- EASTER EGG HUNT
- HALLOWEEN PUMPKIN CARVING
- NEARLY NEW SALE
- MOVIE NIGHTS
- OWN CLOTHES DAYS
- PRELOVED UNIFORM SALES
- QUIZ NIGHT
- SPONSORED READ
- BAKE SALES
- SUMMER FIAR
- WINTER FAIR



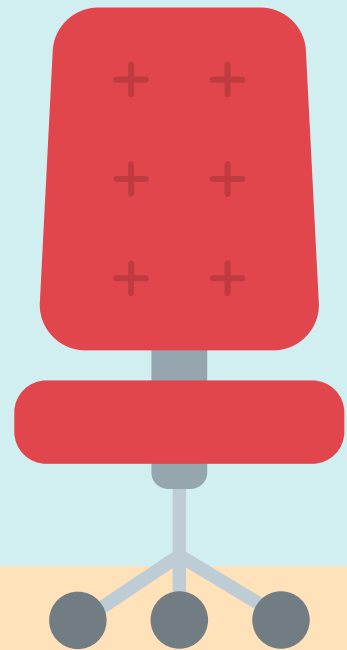
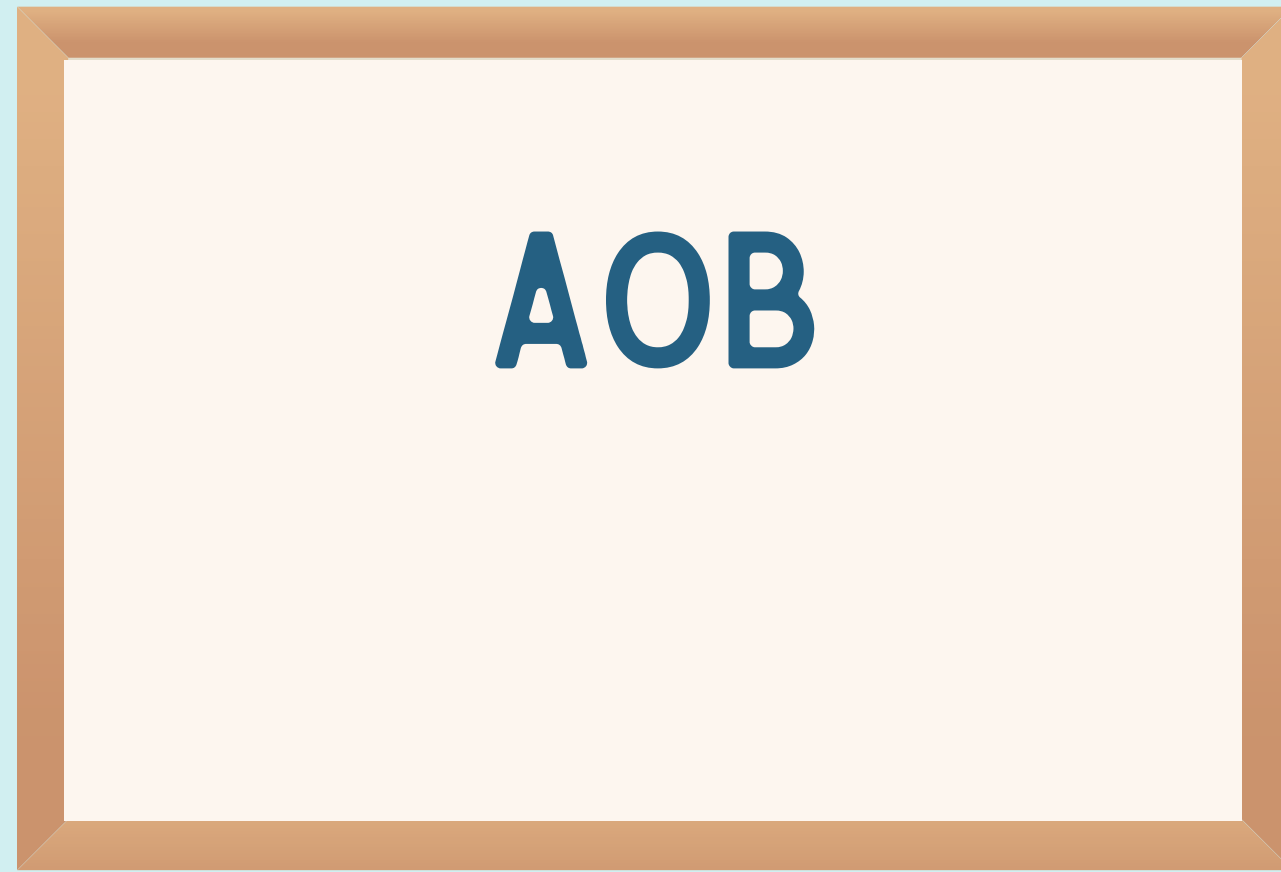
ELECTION OF COMMITTEE MEMBERS



CHAIR
VICE CHAIRS
TREASURER
SECRETARY
ORDINARY VOTING MEMBERS



AOB



WLFSP PTA

Financial Activities

August 2022 - July 2023

	TOTAL
Income	
Charitable activities	30,196.62
Total Income	£30,196.62
Cost of Sales	
Bar Expenses-Summer fair	1,026.46
Bar-Winter Fair	47.00
BBQ Expenses- Summer Fair	575.50
BBQ Expenses-Winter Fair	940.10
Bouncy Castle- Summer Fair	125.00
Clay stars & Decorations-Winter Fair	53.02
Coffee and Cakes- Summer Fair	91.24
Easter Egg Hunts expenses	85.00
Games- Summer Fair	775.75
Games-Winter Fair	468.01
Henna Technique Workshop-Summer Fair	115.90
Henna Techniques Workshop-Winter Fair	57.73
Make Your Own Slime- Winter Fair	52.40
Mulled wine and hot chocolate- Winter Fair	262.16
Quiz Night- Bar Expenses	334.35
Slushies - Summer Fair	54.00
Slushy Expenses- Summer Fair	82.01
Soak the teacher - Summer Fair	95.43
Summer Fair- Raffle Tickets	103.80
Sweets and Popcorns-Summer Fair	143.73
Workshops- Summer Fair	123.22
Yr6 Enterprise Stall- Summer Fair	159.00
Total Cost of Sales	£5,770.81
TOTAL	£24,425.81
Expenditures	
Office/General Administrative Expenses	1,389.64
Quiz Night Expenses	660.00
School Funding	30,495.60
Summer Fair General Expenditures	625.07
Winter Fair General Expenditures	1,363.52
Total Expenditures	£34,533.83
NET OPERATING INCOME	£ -10,108.02
Other Income	
Amazon Smile Donation	268.78
CAF Ongoing Credit	526.75
Donations	282.72
Interest earned	274.23
Total Other Income	£1,352.48
NET OTHER INCOME	£1,352.48
NET INCOME/(EXPENDITURE)	£ -8,755.54

WLFSP PTA

Balance Sheet

As of July 31, 2023

	TOTAL
Fixed Asset	
Total Fixed Asset	
Cash at bank and in hand	
Business Community Current Account	419.15
Business Instant Access Account	53,274.23
Total Cash at bank and in hand	£53,693.38
NET CURRENT ASSETS	£53,693.38
Creditors: amounts falling due within one year	
Current Liabilities	
VAT Control	0.00
Total Current Liabilities	£0.00
Total Creditors: amounts falling due within one year	£0.00
NET CURRENT ASSETS (LIABILITIES)	£53,693.38
TOTAL ASSETS LESS CURRENT LIABILITIES	£53,693.38
TOTAL NET ASSETS (LIABILITIES)	£53,693.38
Charity funds	
Opening Balance Equity	55,804.16
Retained Earnings	6,644.76
Surplus/(Deficit)	-8,755.54
Total Charity funds	£53,693.38



Section A

Independent Examiner's Report

Report to the trustees	West London and Earls Court Free School Primaries PTA		
On accounts for the year ended	31 July 2023	Charity no (if any)	1159396
	Set out on pages 1 - 16		

I report to the trustees on my examination of the accounts of the above charity ("the Trust") for the year ended **31/07/2023**.

Responsibilities and basis of report

As the charity's trustees, you are responsible for the preparation of the accounts in accordance with the requirements of the Charities Act 2011 ("the Act").

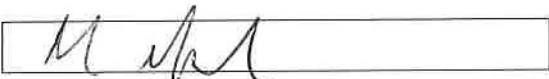
I report in respect of my examination of the Trust's accounts carried out under section 145 of the 2011 Act and in carrying out my examination, I have followed all the applicable Directions given by the Charity Commission under section 145(5)(b) of the Act.

Independent examiner's statement

I have completed my examination. I confirm that no material matters have come to my attention in connection with the examination (other than that disclosed below *) which gives me cause to believe that in, any material respect:

- the accounting records were not kept in accordance with section 130 of the Charities Act; or
- the accounts did not accord with the accounting records; or

I have no concerns and have come across no other matters in connection with the examination to which attention should be drawn in this report in order to enable a proper understanding of the accounts to be reached.

Signed:  **Date:** 09/12/2024

Name: Craig Nightingale

Relevant professional qualification(s) or body (if any): ACA

Address: 40 Russell Road
Buckhurst Hill
IG9 5QE

Only complete if the examiner needs to highlight material matters of concern (see CC32, Independent examination of charity accounts: directions and guidance for examiners).

Give here brief details of any items that the examiner wishes to disclose.

None.

West London and Earls Court Free School Primaries PTA

England & Wales - Charity number 1159396

Accounts



ANNUAL GENERAL MEETING

12 October 2022

Agenda



- Welcome
- Announce positions without nominees
- Actions from AGM 2021
- Chairs' Report for 2021/2022
- Treasurer's Report for the period
1 Aug 2021 - 31 Jul 2022
- Special votes
- Recommendations
- Election of Trustees of the Charity
- Refreshments



Actions from last AGM

- ❑ Voted to release funds that were ring-fenced for library build: £20k
- ❑ Appointed Verdant Accountants of 167 Clarence Avenue, New Malden KT3 3TX as Independent Examiners of the Accounts
- ❑ Submitted accounts to Charity Commission on 2 May 2022 and available upon request.

Chairs' Report



- ❑ Health & Safety issues
 - ❑ Unable to hold any events on site Nov - Mar
 - ❑ PTA Coffee Morning - canceled
 - ❑ Carols Concert - canceled
 - ❑ Winter fair - not allowed
 - ❑ Summer Festival - canceled
 - ❑ Alternative events for children
 - ❑ Big Fat Quiz of the Year & Virtual Santa
 - ❑ In-house craft activities
 - ❑ After-school Summer Fair
 - ❑ Celebrate House point winners every half-term



Chairs' Report

- ❑ Finances - What we found
 - ❑ Manual and time-consuming accounting
 - ❑ Duplication of billing to the PTA
 - ❑ Cash officer procedures not robust
 - ❑ Cashbook not used properly
 - ❑ Wisepay problematic
 - ❑ Unknown costs per transaction
 - ❑ Delayed accounting and billing (e.g. > 1yr)
 - ❑ Group transactions not trackable



Chairs' Report

- ❑ Finances - What we did
 - ❑ Set robust and accountable cash officer procedures
 - ❑ Switched to online payments with BOPP
 - ❑ Very low-cost admin fee
 - ❑ Immediate tracking of transactions
 - ❑ Immediate access to funds/payments
 - ❑ Drawbacks:
 - ❑ Not supported by all banks
 - ❑ NEW! - people like the devil they know



Chairs' Report

- ❑ Finances - What we did
 - ❑ Implemented new accounting software Quickbooks
 - ❑ Immediate view of accounts and transactions
 - ❑ Quick reconciliation of payments, receipts to prevent duplicate payments
 - ❑ Zettle machines
 - ❑ Categorising sale items for easy reconciliation



Chairs' Report

- ❑ Inclusion
 - ❑ Advance registration for events
 - ❑ Most payments accepted at registration
 - ❑ Affordable prices
 - ❑ No-cost option built in design of registration
 - ❑ All families included, regardless of financial situation

Chairs' Report



❑ Governance

- ❑ Questions arose around 2021 AGM and Committee, necessitated tracking down of PTA documents
- ❑ 2 versions of Constitution circulating at last year's AGM

The Holy Grail = The Constitution was found!!
2014 version

- ❑ Incorrect name for the charity

Treasurer's Report

What we raised



Income	
▼ Charitable activities	
▶ Autumn Fair- Games	13,534.97
Big Fat Quiz of the Year2021	340.00
Christmas Carol Concert	180.00
▶ Disco ticket	1,618.31
Easter egg hunts	460.08
Grow Your Own Fiver	23.00
Halloween	395.28
Jubilee picnic	171.40
Macmillan Coffee morning Donation	107.00
Own Clothes Day	416.29
Photo Contest	427.96
Preloved Uniform Sale	975.88
▶ Quiz Night	1,231.93
Sponsered Read	3,461.05
▶ Summer Fair-Raffle Tickets	6,083.71
Treat Sale	103.33
Virtual Meet Father Christma	50.00
Wimbeldon Sale	437.19
Total Charitable activities	30,017.38

£964 were raised for charities by school: Children in Need, Macmillan, Save the Children. Only £107 came through to PTA via Wisepay.

Treasurer's Report

What we funded



▼ School Funding

Amazon Wishlist	948.16
French Play Day	879.97
GB Inspire	513.90
Globe Workshop-2020-2021	2,200.00
Music Essentials	74.00
Music Essentials-Note Stands	125.48
Outdoor Library	599.99
Sport Kit	431.15
Staff Wellbeing-WLFS ECFS	1,358.81
Travel and Accommodation	689.82
Y6 Leavers Book 2021-2022	2,652.00
Y6 Leavers Book-2020-2021	1,422.00
Yamaha Digital Piano	1,819.00
Yr6 Hoodies 2021-22	1,698.72
Total School Funding	15,413.00

Financial Activities Report

August 2021 - July 2022

Income	
Charitable activities	30,017.38
Total Income	£30,017.38
Cost of Sales	£6,883.98
TOTAL	£23,133.40
Expenditures	
Autumn Fair Expenditures	861.60
Christmas in house activity	223.48
GOCARDLESS Charges	1.20
Office/General Administrative Expenses	1,997.72
School Funding	15,413.00
Summer Fair Expenditures	285.91
Total Expenditures	£18,782.91
NET OPERATING INCOME	£4,350.49
Other Income	
Amazon Smile Donation	151.27
CAF Ongoing Credit	505.44
Donations	734.70
Duplicate Invoice/Refund	1,692.74
Interest earned	12.26
Total Other Income	£3,096.41
Other Expenditures	
Cash Float -Autumn Fair	300.00
Rigs & Gigs AV Hire & Event Production Co	500.00
Total Other Expenditures	£800.00
NET OTHER INCOME	£2,296.41
NET INCOME/(EXPENDITURE)	£6,646.90

Treasurer's Report

Balance sheet as of July 31 2022



Fixed Asset

Total Fixed Asset

Cash at bank and in hand

Business Community Current Account

1,448.92

Business Instant Access Account

61,002.14

Total Cash at bank and in hand

£62,451.06

NET CURRENT ASSETS

£62,451.06

NET CURRENT ASSETS (LIABILITIES)

£62,451.06

TOTAL ASSETS LESS CURRENT LIABILITIES

£62,451.06

TOTAL NET ASSETS (LIABILITIES)

£62,451.06

Charity funds

Opening Balance Equity

55,804.16

Retained Earnings

Surplus/(Deficit)

6,646.90

Total Charity funds

£62,451.06



Treasurer's Report

Comparison of 3 previous financial years

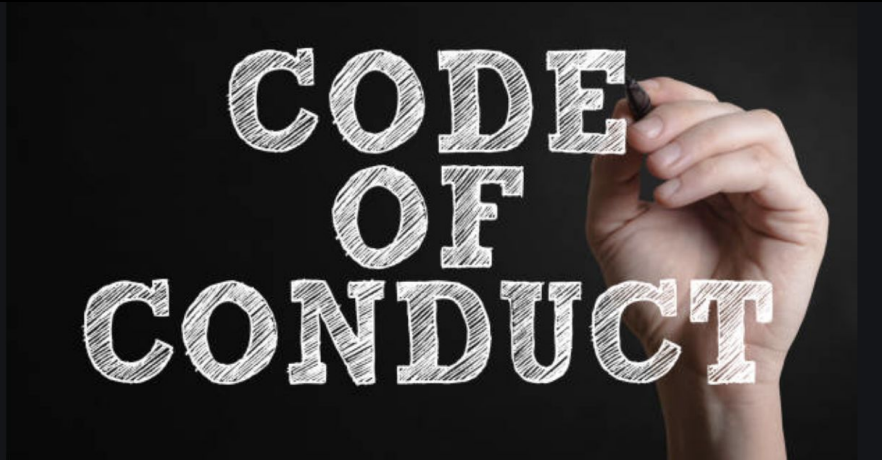
	2021-22	2020-21	2019-20
Total Income	25,082	13,071	22,768
Total Expenditure	18,435	18,357	24,418
Total Net Assets	62,451	55,804	61,090

As of 31 Jul 2022

Accounts for 2020-2021 were submitted to the Charity Commission on 02 May 2022

Draft of accounts return for 2021-2022 available for review upon request.

**CODE
OF
CONDUCT**



CONFLICT



OF

INTEREST

West London Free School Primary Parent Teacher Association
Financial Accounts for the year ended 31 July 2022

	Income		Income	
	Gross	Net	Gross	Net
	2022	2021	2021	2021
	£	£	£	£
Fundraising Events				
Macmillan coffee morning	107	107	-	-
2nd Hand Uniform Sales	976	976	554	554
Autumn Fair	13,535	9,405	-	-
Halloween events	395	395	312	312
Disco	1,618	1,386	-	-
Jubilee Picnic	171	(66)	-	-
Quiz Night	1,232	430	-	-
Summer Fair	6,084	4,178	-	-
Wimbeldon Sale	437	295	-	-
Christmas Show Donations	-	-	-	-
Carol Concert	180	180	2,417	2,417
Christmas Auction	-	-	1,076	1,076
Christmas Quiz	340	340	1,093	1,093
Meet Father Christmas	50	50	170	170
Photo Contest	428	(109)	-	-
Sponsored Read	3461	3461	1,012	1,012
Cake Sales	103	103	-	-
Christmas cards & mugs	-	-	4,490	1,755
Non-uniform Days	416	416	1,463	1,463
Lockdown online workshops	-	-	85	85
Grow your own £5	23	23	583	583
Scavenger Hunt	460	415	240	240
Donations to PTA	735	735	443	443
Charity donations	-	-	400	400
Amazon	151	151	68	68
Year Book Collections	-	-	-	422
Total Fundraising	30,903	22,872	14,406	12,093
Other Income				
CAF ongoing credits		505		550
Late receipts		-		400
Refund(Duplicate Invoice)		1693		-
Bank Interest		12		28
		<u>2210</u>		<u>978</u>
Total Net Income		25,082		13,071
Expenditure				
Amazon Wishlist	948		-	
Beehive & Maintenance	-		1,218	
French Play Day	880		-	
Globe Workshop 2020-2021	2,200		-	
GB Inspire 2020-2021	514		-	
Music Essentials	199		-	
Outdoor Library	600		-	
Travel and Accomodation	690		-	
Yamaha Digital Piano	1,819		-	
Year 6 Hoodies 2021-2022	1,699		-	
Aladdin performance	-		203	
Shed	-		2,324	
Picnic tables	-		928	
Staff wellness activities	1,359		1,243	
Book vouchers	-		6,280	
Football kits	431		737	
Year 6 Yearbook 2020-2021	1,422		-	
Year 6 Yearbook 2021-2022	2,652		-	
Charitable Donations	-		3,693	
PTA events	293		-	
Rigs & Gigs Credit Voucher	500		-	
		<u>16,206</u>		<u>16,625</u>
General Expenditure				
Parentkind subscription		116		111
Independent Examinations		200		400
Late invoices/mistake payments		-		790
New card payment machines		353		353
Printing,Postage and Stationery		402		78
Intuit Subscription		20		-
Zoom Subscriptions		144		-
AGM Refreshment		127		-
Staff Presents		99		-
Gift Crads		204		-
Office Equipments		254		-
Google Annual Subscription		10		-
Gocardless Charges		1		-
Cash Float- Autumn Fair		300		-
Total Expenditure		18,435		18,357
Surplus Transferred to accumulated fund		<u>6,647</u>		<u>(5,286)</u>



1

1

West London Free School Primary Parent Teacher Association
Statement of assets and liabilities at 31 July 2022

	2022		2021	
	£	£	£	£
Current Assets				
Cash at Bank		62,451		55,804
Cash in hand		-		-
Debtors		-		-
Total Current Assets		62,451		55,804
Current Liabilities				
Total net assets		-		-
Accumulated Funds				
Brought forward		55,804		61,090
Surplus for the year		6,647		(5,286)
Accumulated funds carried forward		62,451		55,804

Jessica Kim-Quijano and Sytha Radhe
PTA Co-Chairs

Date of approval: 15.12.22

Signed on behalf of all the Trustees

signature



17.01.23

West London Free School Primary
Parent Teacher Association
Accounts for the year ended
31 July 2022

Charity Number 1159396



Section A

Independent Examiner's Report

Report to the trustees/ members of

WEST LONDON FREE SCHOOL PRIMARY PTA

On accounts for the year ended

31 JULY 2022

Charity no (if any)

1159396

Set out on pages

1-4

(remember to include the page numbers of additional sheets)

I report to the trustees on my examination of the accounts of the above charity ("the Trust") for the year ended 31 JULY 2022

Responsibilities and basis of report

As the charity trustees of the Trust, you are responsible for the preparation of the accounts in accordance with the requirements of the Charities Act 2011 ("the Act").

I report in respect of my examination of the Trust's accounts carried out under section 145 of the 2011 Act and in carrying out my examination, I have followed the applicable Directions given by the Charity Commission under section 145(5)(b) of the Act.

Independent examiner's statement

I have completed my examination. I confirm that no material matters have come to my attention in connection with the examination which gives me cause to believe that in, any material respect:

- accounting records were not kept in accordance with section 130 of the Act or
- the accounts do not accord with the accounting records

I have no concerns and have come across no other matters in connection with the examination to which attention should be drawn in order to enable a proper understanding of the accounts to be reached.

* Please delete the words in the brackets if they do not apply.

Signed:

Date:

13 DECEMBER 2022

Name:

SHARIF Mohamed

Relevant professional qualification(s) or body (if any):

ACCA

Address:

236 EMLYN GDNS

LONDON W12 9UN

Only complete if the examiner needs to highlight matters of concern (see CC32, Independent examination of charity accounts: directions and guidance for examiners).

Give here brief details of any items that the examiner wishes to disclose.

NONE