



# Annual Report 2021

Chartered Institute of  
**Horticulture** 

## Contents

<b>President's Welcome</b>	<b>3</b>
To promote the profession of horticulture and the professionalism of those working in the industry	4
To act as an authoritative body; consulting with Government and other policy making bodies on matters of interest or concern to professional horticulturists	5
To confer recognised status upon professionally qualified and experienced horticulturists	6
<b>List of Chartered Horticulturists</b>	<b>7</b>
To promote educational and training opportunities and encourage the development of all disciplines within horticulture	8
<b>Financial Report</b>	<b>9</b>
To co-operate with other bodies on matters of common concern	10
To disseminate information on matters affecting the profession and provide opportunities for discussion amongst horticulturists	11
<b>Regional Branches</b>	<b>12</b>
<b>Branch Updates</b>	<b>13</b>
<b>Organisation &amp; Governance</b>	<b>14</b>
<b>Council of Trustees</b>	<b>14</b>
<b>Trustees Elected in 2021</b>	<b>15</b>
<b>Contact Details</b>	<b>16</b>

# President's Welcome

On behalf of the Trustees it is my pleasure to introduce to you our Annual Report for 2021.

We did not envisage that we would still be challenged with the Covid-19 pandemic throughout the year. However, we have continued to take advantage of online meetings at national and branch level, embraced online events and have delivered a range of continuing professional development opportunities to our members. Thank you to British Growers who have continued provision of secretariat services.

New members of the Council of Trustees have provided additional expertise, complementing the experience of continuing officers and representatives. In December 2021 we completed the Strategic Plan for the next five years and through our quarterly Council of Trustees meetings we will begin delivering on the strategy and shaping the future direction of the Institute. Branch Chairs also meet quarterly ensuring that we have positive dialogue with branch members.

The Chartered Institute of Horticulture is financially stable and our membership is in growth. Thank you to all members who have contributed to our success, in particular the Management Board and Development Officer for their hard work.

I am one year into my tenure, and I am looking forward to implementing the new initiatives outlined in the strategic plan. Thank you for your continued support, I commend this Annual Report to all.

*Susan Nicholas*

**Susan Nicholas FCIHort  
President**



# To promote the profession of horticulture and the professionalism of those working in the industry

Horticulture is a profession to be proud of, the impact of horticulture on human health, wellbeing and sustainability is immeasurable; from the production of nutritious vegetables, fruits and other horticultural crops to the impact of well designed, constructed and maintained public and private green spaces. As an institute we are proud to celebrate this impact as a way of encouraging others to consider a professional career in horticulture.

## Grow Careers

Inspiration and innovation were both in great supply at the Grow Careers event organised by CIH Trustee **George Gilchrist FCIHort** and colleagues in the Scotland Branch. The event was live-streamed to colleges and individuals across the UK, Ireland and even internationally. With an inspired programme of headline speakers including **Dr Suzanne Moss** from the Royal Horticultural Society; who discussed the value of ornamental and environmental horticulture in the context of the drive for climate 'net zero' by 2050. Fellow CIH Trustee **Phil Pearson FCIHort**, Director of the APS Group; one of the UK's largest protected crop producers spoke enthusiastically on the career opportunities in commercial horticulture. Phil did much to dispel the myths around salaries, conditions and progression opportunities. Offering an international perspective, the Director of the Jenkins Arboretum **Tom Smarr** spoke about his personal career journey '*A Career in Horticulture: seeking nature's place in the urban world*', using high profile case studies from the USA including the Highline in New York to illustrate the potential opportunities available to horticulturists abroad.

The popular 'Flash talks' were provided by three early-career horticulturists: **Duncan Young**, gave an insight into micro-propagation at the Royal Botanic Garden Edinburgh. **Fiona Inglis** shared her experience of setting up her walled garden cut-flower business; Pyrus. Finally, **Nick Lazio**, a Longwood Fellowship Graduate talked on the importance of plant collecting linked to climate change.

Opposite, YHOY Finalists with National Organiser Victoria George. Photo Chris Bird

## Young Horticulturist of the Year

Our flagship event; the Young Horticulturist of the Year competition returned in 2021. The first round of the competition was staged on a newly-designed virtual platform and the regional finals were held on Zoom. We were, however, able to stage an in-person Grand Final at Logan Botanic Garden, Scotland. Garden Curator **Richard Baines** acted as Question Master and led visitors on a tour of the garden after the competition. The winner was **Tim Stafford**, an RBG Kew Diploma student. After a year of lockdowns and on-line branch competitions being able to hold the physical event was even more special. Tim received a £2500 travel bursary from the Percy Thrower Trust. The event continues to showcase and inspire the great young talent in the industry with substantial prizes for winning participants, many thanks to all of the sponsors, regional organisers and National YHOY Coordinator **Victoria George MCIHort**.

Promoting horticulture as a profession continues to be the key mission in our strategic plan. Advocating for the rich diversity of career opportunities in the sector is a key feature of attending public orientated garden shows such as the Harrogate Flower Show and the Scottish Garden Show to which we will return in 2022. My personal thanks to all branch committees and working groups who have contributed to our work in this area over the past year.

## David Richardson CHort FCIHort Vice-President







## To act as an authoritative body; consulting with Government and other policy making bodies on matters of interest or concern to professional horticulturists

The Chartered Institute of Horticulture represents members across a wide range of sectors within the industry, and has representation on a number of cross sector bodies.

We continue to be part of the Ornamental Horticulture Roundtable Group (OHRG) who are actively lobbying government through the All Party Parliamentary Group (APPG) 'Gardening and Horticulture' and DEFRA, on matters relating directly to the horticulture industry.

In 2021 the report '*Growing a Green Economy: The importance of ornamental horticulture and landscaping to the UK*' commissioned by the OHRG was published, showcasing an industry with the potential to make a huge contribution to the UK's economic, social, and environmental renewal over the next decade.

The Chair of Education and Qualifications Committee Dr David Elphinstone represents the interests of the CIH on the OHRG Employment and Education subgroup. Allowing us to have direct input into analysing industry skills requirements and future training and education initiatives.

The Institute of Agriculture and Horticulture (TIAH), who gained DEFRA funding in 2021 to develop an

innovative framework to recognise and continuously develop a skilled workforce and inspire and encourage lifelong learning in the Agri-food sector in England. During the year we have been represented directly on the main consultation committee and have also been involved in two working groups: Professional Framework & Continuous Professional Development and Careers & Apprenticeships.

CIH Development Officer Helen Sessions is directly involved in a number of groups, at all levels who are shaping future qualifications for the industry, particularly work-based learning, apprenticeships and T-levels.

Regionally, a number of branch committee officers represent the CIH on consultative bodies; In Scotland Branch Vice-Chair George Gilchrist sits on a cross college and industry group looking at the horticultural curriculum needs in Scotland. Officers and Members also hold positions and trusteeships within other horticultural organisations including: Plant Heritage the Royal Norfolk Agricultural Association and RBG Kew, amongst others.

**Susan Nicholas FCIHort  
President**



## To confer recognised status upon professionally qualified and experienced horticulturists

The CIH continues to confer recognised status on qualified and experienced professional horticulturists as a prerequisite of membership. Becoming a Chartered Horticulturist (CHort) continues to be the ultimate achievement as a horticultural professional; demonstrating expertise, integrity and a commitment to maintaining one's own learning through continuing professional development. In 2021 Chartership was granted to: **Mark Finnegan CHort MCIHort**, **John Marsden CHort MCIHort** and **Lewis Normand CHort MCIHort**.

The CIH continues to honour individuals with a range of accolades. In 2021 Council were pleased to endorse two nominations for Fellowship of the CIH in recognition of outstanding contributions to the horticulture industry. Firstly, **Dr Caroline Elliot-Kingston CHort FCIHort** in recognition of her distinguished academic achievements and secondly to **Andrew Fisher Tomlin CHort FCIHort** for his excellent portfolio of international landscape designs.

The President's Award is awarded to an individual by the President for their outstanding contribution to the

industry. In 2021 the award was presented to **Dr Allen Langton FCIHort** in recognition of his longstanding commitment to the Institute and prestigious career in applied horticultural science.

In 2021 the **Aberconway Award** for the best horticultural dissertation was awarded to **Megan Webb** from Writtle University College for her dissertation entitled '*The morphological plasticity of Sarracenia seedlings in response to supplementary nutrient*'. The award commemorates Lord Aberconway who contributed personally and financially to the establishment of the Institute.

A new award was launched in 2021 in memory of longstanding member **Pamela Pointer**. In recognition of outstanding achievement in academic and practical pursuits, this experiential award will support the winners to attend the annual CIH conference; introducing them to learned society membership, networking and continuous learning. The inaugural recipients of the Pamela Pointer Award were **Natalie Batsch** (University College Dublin) and **Jamie Gault** (CAFRE).



# Chartered Horticulturists

David Adlam CHort FCIHort  
Tom Angel CHort MCIHort  
Steve Arnold CHort MCIHort  
Ian Barnes CHort MCIHort  
Sue Barnes CHort MCIHort  
Heather Barrett-Mold CHort FCIHort  
Matthew Bartlett CHort MCIHort  
Peter Beagan CHort MCIHort  
Roger Beauchamp CHort FCIHort  
Stephen Bernhard CHort FCIHort  
Adam Blunt CHort MCIHort  
Gerald Bonner CHort FCIHort  
Stefan Buczacki CHort FCIHort  
Sarah Byrne CHort MCIHort  
Franziska Cheeseman CHort MCIHort  
Brian Cheng CHort MCIHort  
Mark Chester CHort MCIHort  
Christine Ching CHort MCIHort  
Andrew Cotterill CHort MCIHort  
Brian Crane CHort FCIHort  
Joseph Croke CHort MCIHort  
Kenneth Crowther CHort MCIHort  
Steven Cuthill CHort MCIHort  
Stephen Davies CHort FCIHort  
Geoffrey Deeble CHort MCIHort  
Steven Desmond CHort FCIHort  
David Domoney CHort FCIHort  
Owen Doyle CHort FCIHort  
Gordon Eastham CHort MCIHort  
Gerald Edwards CHort MCIHort  
Caroline Elliott-Kingston CHort FCIHort  
Mark Evison CHort MCIHort  
Anna Eyres CHort FCIHort  
Mark Finnegan CHort MCIHort  
Andrew Fisher Tomlin CHort FCIHort  
Emanuel Flecken CHort MCIHort  
Marcus Forster CHort MCIHort  
Edward Freeman CHort MCIHort  
Charles Funke CHort FCIHort  
Declan Gallagher CHort MCIHort  
Antony Geddes CHort MCIHort  
Malcolm Giles CHort FCIHort  
Carol Gordon-Alleyne CHort MCIHort  
Francis Gordon-Alleyne CHort MCIHort  
David Gregory CHort MCIHort  
Samantha Harvey CHort MCIHort  
Frank Hawkins CHort MCIHort  
Dorothy Hayden CHort MCIHort  
Patrick Hegarty CHort MCIHort  
Michael Higgins CHort MCIHort  
Simon Higson CHort MCIHort  
Colin Hindmarch CHort FCIHort  
Elaine Hughes CHort MCIHort  
Theresa Huxley CHort FCIHort  
Simon Jones CHort MCIHort

Donal Kearney CHort MCIHort  
Ciaran Keaveny CHort MCIHort  
Miranda Kingston CHort MCIHort  
David Knott CHort FCIHort  
Charalambos Kordatos CHort FCIHort  
Martin Latimer CHort FCIHort  
Ching Lau CHort MCIHort  
Boaz Leung CHort MCIHort  
Hoi Chi Li CHort MCIHort  
Miaw Lim CHort MCIHort  
Patrick Loh CHort MCIHort  
Gerald Luckhurst CHort MCIHort  
John Marsden CHort MCIHort  
Andrew Maskell CHort MCIHort  
Glynis Maynard-Bligouras CHort FCIHort  
Valerie McBride-Munro CHort MCIHort  
Stephen McCallum CHort MCIHort  
Ian McDermott CHort MCIHort  
Bryony Mills CHort MCIHort  
Susan Minter CHort FCIHort  
Paul Mooney CHort MCIHort  
Leigh Morris CHort FCIHort  
Richard Morton CHort MCIHort  
Harold Mycock CHort MCIHort  
John Nicholls CHort MCIHort  
Lewis Normand CHort MCIHort  
Margaret Norton CHort FCIHort  
William Notcutt CHort MCIHort  
Clive Parker CHort FCIHort  
Mark Pollard CHort MCIHort  
Colin Quinney CHort MCIHort  
David Richardson CHort FCIHort  
James Robinson CHort MCIHort  
Barbara Segall CHort FCIHort  
Helen Sessions CHort MCIHort  
Mark Shaw CHort MCIHort  
Bernard Sheridan CHort MCIHort  
John Shropshire CHort FCIHort  
William Simpson CHort FCIHort  
Francis Squires CHort MCIHort  
Paul Stacey CHort MCIHort  
Lynn Stevens CHort FCIHort  
Duncan Thomas CHort MCIHort  
Kelly Thompson CHort MCIHort  
George Thorburn CHort MCIHort  
Nigel Thorne CHort FCIHort  
Peter Thurman CHort FCIHort  
Stanley TSUI Ka Hing CHort MCIHort  
Keith Vernon CHort FCIHort  
Richard Wassell CHort MCIHort  
William Watkins CHort FCIHort  
John Weir CHort FCIHort  
Claire Woods CHort FCIHort  
Ching-tin Yu CHort MCIHort



## To promote educational and training opportunities and encourage the development of all disciplines within horticulture

Our popular webinar series returned in 2021, the schedule began with a Social and Therapeutic Horticulture Panel Discussion with **Felicity Weeks MCIHort**, **Ian Bocock**, **Imogen Jackson MCIHort** and **Annabelle Padwick**, chaired by **Sue Jeffries MCIHort**. Together, panellists shared their experiences of working in the sector and debated key topics such as evaluation tools, training and funding.

CIH Vice-President **David Richardson CHort FCIHort**, Director of Horticulture for the Commonwealth War Graves Commission shared his highs and lows of operating a global horticulture workforce of over 850 personnel in the midst of the global pandemic.

Sustainability was the key theme of several sessions, firstly, Melcourt Technical Director **Catherine Dawson MCIHort** offered a perspective on growing media in the UK in 2021. The Author of '*Plastic Free Gardening*' **Fiona Thackeray** provided inspiration and practical assistance on how to approach plastic-free gardening. **Dimitrisz Sopisz MCIHort**, Grounds and Gardens Supervisor at Queen Mary University offered his perspective on regenerative horticultural practices.

**Keith Sacre**, Director at Barcham Trees gave an overview of the carbon capture rating scheme for trees, designed to illustrate the environmental credentials of tree choices. Integrated pest management and pheromones were explored by **Dr Sam Jones**, Technical Director of International Pheromone Systems. Sam introduced the role of semiochemicals, and how they can be used in larger scale horticultural systems and traditional garden settings alike.

Opportunities for face-to-face meetings returned in the later part of 2021. Our structured program of visits to a range of horticultural businesses, nurseries, gardens and research centres remains a valuable form of continuing professional development.

In July, the West Midlands & South Wales Branch visited **Hergest Croft**, the private garden of plantswoman and CIH member **Elizabeth Banks FCIHort**. Members toured the grounds and arboretum led by the keeper of the records Rowan Griffiths. In August the Eastern Branch visited the renowned kitchen garden at **Audley End**, members were given a guided tour of the gardens by Head Gardener Louise Ellis.

The Scotland Branch had a guided tour of **Dundee Botanic Gardens** led by Kevin Frediani, Garden Curator. Kevin explained the role of the garden as a living laboratory, enabling research on sustainability, ecological leadership and nature based solutions. The Branch later visited **Saughton Park**, this 34 acre formal garden features the largest herbaceous border in Edinburgh.

Members in the Eastern and South East branches enjoyed a day of joint visits in Essex to **Ulting Wick** and '**Furzelea**'. Members reported finding the horticultural excellence in both gardens to be inspirational, especially as this was the first opportunity for many of them to meet given pandemic constraints.

The West Midlands & South Wales Branch ended the year by visiting **Newleaf Wholesale nurseries**, Evesham. Specialising in clematis and climbing plants, the owners explained the finer points of clematis propagation, which can sometimes have variable success rates.



# Financial Report

2021 continued to be a good financial year for the Chartered Institute of Horticulture, despite COVID-19. At year end the Institute was in a stronger financial position than at the start of the year. Income increased to £144.3K composed of membership fees of almost £134.6.6K which were some 9% more than in 2020, and Publications £4K. As the final of the YHOY competition was held much later in the year than normal the sponsorship of £14.3K due from Shropshire Horticultural Society had not been received at year end.

Expenditure was also significantly higher at £154.5K. This was largely attributed to the fact that the new Development Officer took up her position in mid-February and the fact that there were increased activities during the year compared to 2020. The main items of expenditure were Secretariat charges of £58K, Development Officer £32.7K, IT and Database £14.1K, *The Horticulturist* £16.4K, YHOY heats £6.2K and final £10.2K, Auditors and Insurance £4.8K, Meetings £3.7K and Miscellaneous £8.4K. This gave an operating deficit for the year of £10.2K.

Our investments in NFU mutual were valued at £116.7K at the end of 2020 but increased to £127.9K at the end of 2021. Our deposit in CCLA amounted to £151.7K. In addition, we had a bank balance at the end of the year of £60.6K This left the Institute with reserves of £340.2K at the end of 2021 compared with £335.4K at the end of 2020.

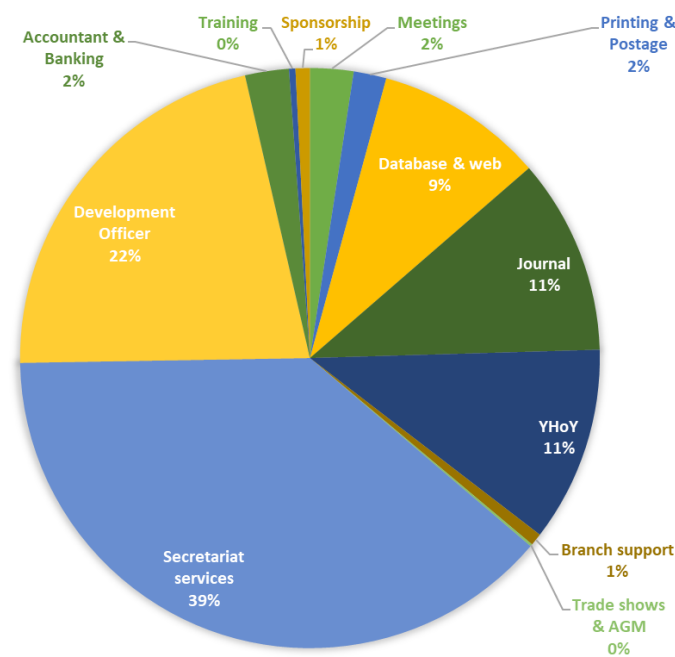
Membership fees were unchanged for 2021.

The Management Board and Council continued to monitor income and expenditure very closely over the year with the aim of maximizing income and ensuring that the expenditure contributed to the capacity of the Institute to deliver an enhanced professional service for the membership. The full audited accounts for 2021 will be published on our website.

## Charitable and Public Benefit

The Charity Commission requires all charities to make an annual statement as to the way their activities benefit the public. The Institute considers that the promotion of Chartered Status provides both the horticultural industry and its members with added

## Expenditure 2021



professional status as more members become 'Chartered Horticulturists'. The collaborative work of the Institute with key organisations ensure both the Institute and the industry has a voice on the wider stage. The Trustees are mindful of the Charity Commission Guidance on public benefit.

## Reserves Policy

The Chartered Institute of Horticulture's policy concerning the level of cash and investments is to have funds available to: meet liabilities as they fall due; meet emergencies and build up investments over a period with the aim of providing an additional income stream to cover its activities. The Trustee's free reserves target, at a minimum, is to cover the full cost of operating the Institute for 3 months. The current level of free reserves held is significantly in excess of the Institute's reserves policy.

## Risk Management

The trustees have a duty to identify and review the risks to which the charity is exposed and to ensure appropriate controls are in place to provide reasonable assurance against fraud and error.

**Gabriel Roe FCIHort**  
Honorary Treasurer

# To co-operate with other bodies on matters of common concern

The Chartered Institute of Horticulture is proud to operate in a buoyant and diverse industry, we would like to thank all of our industry, research, charitable and non-governmental collaborators for their assistance in meeting our joint objectives in 2021.

2021 offered the opportunity to interact and meet more industry colleagues through trade events. In September the West Midlands & South Wales and North West & North Wales Branches supported the Development Officer Helen Sessions at the two-day **Landscape Show** held at the NEC in Birmingham. The Northern Branch successfully continued to host the Garden Advice Bureau at the **Harrogate Spring and Autumn Flower Shows** with the North of England Horticultural Society. As an organisation we are looking forward to participating in more trade shows in 2022, this is a key way to connect with horticulturists, raising our organisations profile within industry and with the public. We are looking forward to supporting the 50<sup>th</sup> anniversary of the **Four Oaks** Show in September, amongst many others this coming year.

We are grateful to the range of businesses and organisations that continue to support young horticulturists through their sponsorship of the Young Horticulturist of the Year Competition. These include: Cherry Lane Garden Centres, Adrian Stockdale, Stockbridge Technology Centre, Howard Nurseries, North of England Horticultural Society, South West Growers, Squires Garden Centres, Bord Bia, PlantNetwork, RBGE Logan, The Percy Thrower Bursary and The Shropshire Horticultural Society.

The Institute continues to offer a joint membership with the **International Society for Horticultural Science** and encourage more members to take up this subscription offer.

## Supporting Horticulturists

Several branches continue to support the horticultural benevolent charity **Perennial**. The Eastern and South Eastern Branches continue to be bronze partners supporting horticulturists in need through their work. Nationally we have promoted the tools and services offered by Perennial to our membership and via social media.

## Showcasing Sustainable Horticulture

To mark the 26<sup>th</sup> UN Climate Change Conference of Parties (COP26) summit, hosted in Glasgow, the Institute showcased two afternoons of webinars highlighting sustainability best practice across the horticulture industry, and how organisations are aligning themselves in meeting the UN sustainability goals. This collaborative effort included speakers from across the conservation, gardens and edibles sectors including: **Dr Paul Smith**, Secretary General of Botanic Gardens Conservation International (BGCI), **Dr David Rae FCIHort**, former Director of Horticulture and Learning at the Royal Botanic Garden Edinburgh, **Prof. Alistair Griffiths FCIHort**, Director of Science, Royal Horticultural Society and **Rob Parker**, Chairman of the British Leafy Salads Association.

## Future of Horticultural Education

CIH Development Officer Helen Sessions has been representing the Institute and taking an active role with the trailblazer groups to help shape UK apprenticeships for production horticulture and landscaping sectors. The Institute has provided some much-needed financial support to the horticulture and landscaping trailblazer group to assist them in delivering this important training for the future of our industry. Our ambition is to extend our support into the edibles sector interest groups in 2022. Helen has been working closely with a selection of our land-based colleges to further build these relationships.

City and Guilds are developing the new Agriculture, Environment and Animal Care T Level qualifications in England. The technical qualification pathway for Agriculture, Land Management and Production will have horticultural content in the form occupational specialisms, for either; crop production or ornamental and environmental horticulture and landscaping. The CIH is involved in the validation of these new qualifications through the 'Employer and Industry Board' and is committed to leveraging employer and industry engagement as the qualifications enter their next approval stage and eventual launch in September 2023.

**Helen Sessions CHort MCIHort**  
CIH Development Officer



## To disseminate information on matters affecting the profession and provide opportunities for discussion amongst horticulturists

All committees, branches and working groups have embraced online meetings. The use of virtual platforms has facilitated a greater level of participation and communication with members; especially those who would struggle to attend a physical event.

Annual Branch Meetings have also been held virtually, often in preference to physical meetings, this has also helped attract more committee members and officers. Branches maintain regular contact with members via email; sharing newsletters, events and meeting invitations.

Social media remains an important way of contacting members and reaching-out to potential members. Branches, members and other stakeholders regularly supply content to be shared over the various platforms: LinkedIn, Facebook, Twitter and Instagram. Several branches have their own Instagram and Facebook presence, which further contribute to local connectivity and engagement between members.

The monthly **e-horticulturist** bulletin is used as a vehicle for sharing timely industry news and developments, job vacancies and calls for participation in various industry and government consultations.

The **James Bruce Memorial Lecture** was given by the Editor of *Horticulture Week*, **Matthew Appleby**. In the year of the 180<sup>th</sup> anniversary of *Horticulture Week*,

Matthew explored the journal's past and then offered his analysis on how the horticultural trade has changed during the pandemic of 2020/21, discussing the impact of Brexit on the sector, how race and gender have risen up the agenda and how the industry has reacted. Matthew concluded by giving his view on future gardening and horticulture industry trends.

Our periodical ***The Horticulturist*** is a cornerstone of Institute communications, with a mission to share best practice and information on a range of horticultural issues. All branches are encouraged to submit news and features for every edition. We are proud to share this much-appreciated resource with our free student members. Journal Editor **Barbara Segall CHort FCIHort** is supported by the editorial advisory board which meets several times a year to review content and to discuss topics and potential authors. The board is chaired by **Professor Noeleen Smyth MCIHort** and supported by members: **Philip Barwell, Sally Drury, Dr Suzanne Moss, Dr Eduardo Olate** and **Jonathan Ward**.

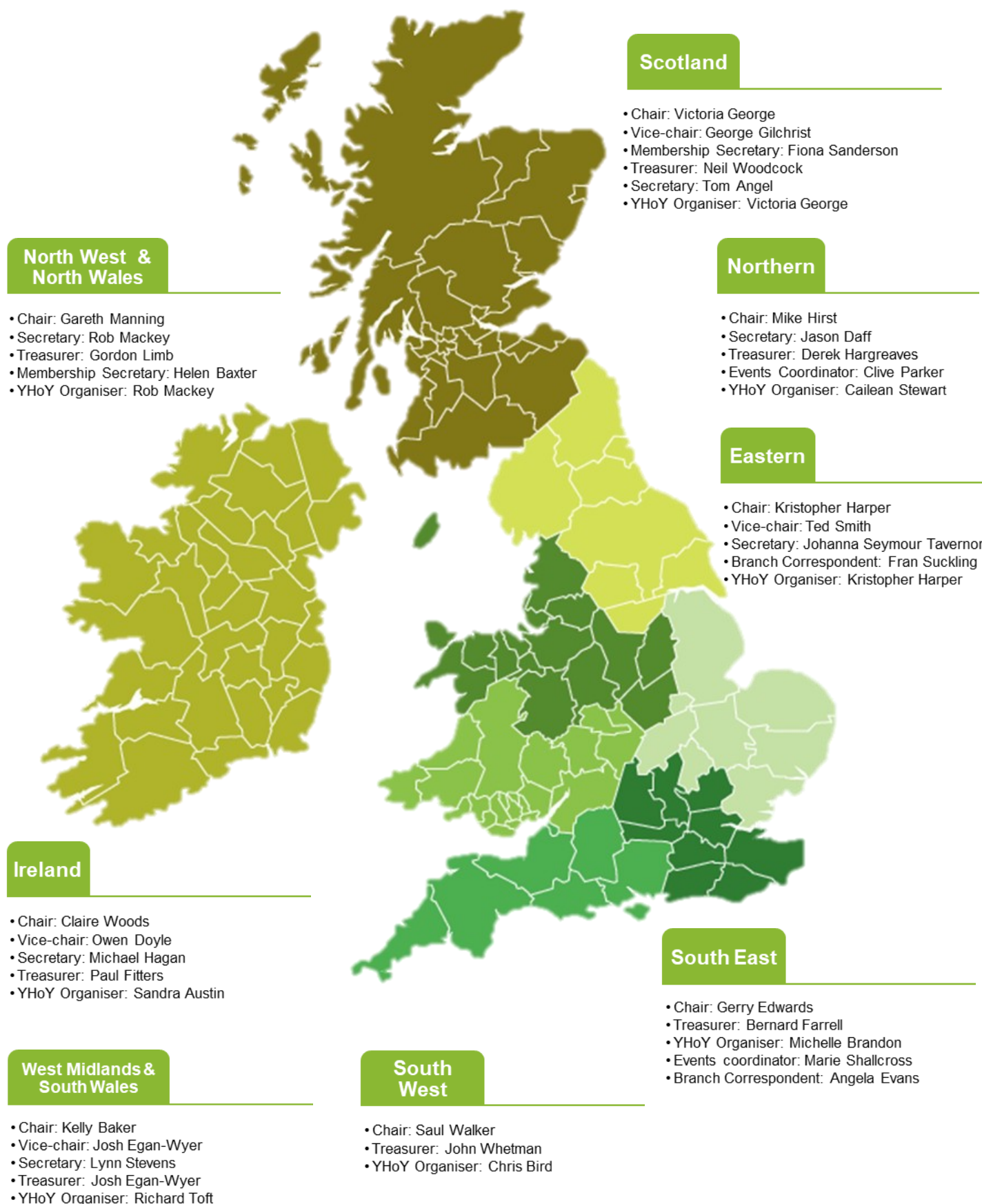
Contributions of feature articles, news items and profiles for the new series, '*Routes into Horticulture*', as well as suggestions of topics and potential authors, are always encouraged and welcome.

**Jason Daff MCIHort**  
**Honorary Secretary**



# Regional Branches

Our 8 regional branches operate autonomously with a local committee and representation on the CIH Council of Trustees.  
Branch Officers are elected at Annual Branch Meetings



# Branch Updates

## Scotland

2021 was, despite covid, a busy year in Scotland; Zoom allowed more events than expected, and the lifting of restrictions allowed the YHoY Grand Final at Logan to be a roaring success! I took over the role of Branch Chair at the ABM, and have set myself 3 goals to achieve across my tenure. The first of these is to increase branch contact with members, members involvement within the branch, and increase members attendance at events. To create a yearly template for mixed physical and online events and finally, expand the student representative role in order to build an improved relationship with the student members.

**Victoria George MCIHort, Chair**

## Northern

The branch committee have met several times, via Zoom since our ABM in September. The Northern Branch Commendation was awarded to Dr John Grimshaw, Director of the Yorkshire Arboretum, in recognition of his distinguished career and contribution to Horticulture. Committee member's contacts within the industry have been instrumental in securing a number of events for the 2022 program, the committee has been bolstered by the addition of four co-opted members, but we would welcome any members who would like to get involved.

**Mike Hirst FCIHort, Chair**

## Eastern

2021 proved to be another challenging year. We kept in touch with our branch members via our regular email updates, engagement via our branch private Facebook group, and our virtual monthly informal coffee and catch-up evenings as well as our two physical events. I would like to thank all our members for their continued support of the branch and the Institute during what has been a very challenging and unpredictable time. The committee have been very proactive over the past year to ensure that the branch activities are covered as much as possible in *The Horticulturist* and *e-horticulturist*, thanks to our Branch Reporter, Fran Suckling for this.

**Kristopher Harper MCIHort, Chair**

## West Midlands & South Wales

Thank you to the branch committee for all your excellent support throughout 2021. I would also like to thank those that have attended the regional visits. It has been very enjoyable meeting you all and I hope to get to know each of you better over the next couple of years. We have tried to create a list of visits for 2022 that include options for online participation (variety of established gardens, renovation projects, nurseries and even somewhere that makes beer!). Hopefully this will appeal to a wider audience and encourage more participation. We are as always looking for more support to help our committee. Please do come forward if you can offer a few hours each month. Personally, I have found it really useful to network and develop my own career.

**Kelly Baker MCIHort, Chair**

## North West & North Wales

Due to the extended lockdown as a result of the pandemic there has been little the branch could do to fully engage with the membership. Zoom meetings have been utilised to disseminate information in both directions and it was noted that a number of individuals have connected with the branch who have hitherto been unable to join in with activities. We have found that the branch has coped well with the transition to electronic meetings and intend to keep working in this way. We acknowledge that we need to look into how we can engage better with the branch membership and the industry as a whole and anticipate a better year in 2022.

**Gareth Manning FCIHort, Chair**

## South West

The last two years during the pandemic have been a difficult period for both the branch and horticulturists in the South West with a virtual standstill of our usual ability to network and train at meetings and events. We were very grateful to still organise and carry out our usual YHoY competition, albeit virtually, congratulations to Shaun Ward; who represented the branch admirably in the final. I would like to extend my thanks to two long-time committee members Jess Evans and Iain Park who have decided to step down – both have served the branch admirably as a former Chair in Jess's case and as our always reliable Secretary in Iain's. Both have helped to keep the branch functioning and well-organised. We are actively recruiting new branch committee members, so please do get in touch if you'd like to help.

**Saul Walker MCIHort, Chair**

## South East

We are fortunate to have new committee members: Adam Blunt, Karen Hook, Katrina Young, Andrew Cotterill, Michelle Brandon and Gerry Edwards. Gerry takes on the role of Chair and Michelle is our new YHoY coordinator. The Committee conferred a Branch Award to Richard Moore for his exceptional work in finding software solutions to take the YHoY competition online. We thank all committee members, including those recently retired, for their help and commitment to the branch.

**Angela Evans FCIHort, Branch Representative**

## Ireland

The committee is very aware that the Branch has been limited in its activities during the pandemic due the restrictions on travel and meeting in person, this has not been helped by having different restrictions in the two jurisdictions. We were able to end the year with an online Annual Branch Meeting and social event where, following the official business, members were able to share their experiences which prompted interesting discussions on food security, biodiversity and the propagation of sea cottonweed.

We hope to be more active in 2022, with a planned day of garden visits for April and the return of the David Robinson memorial lecture in association with Bord Bia.

**Claire Woods CHort FCIHort, Chair**



## Organisation & Governance

Council, as the governing body and trustees of the Institute as a registered charity, is responsible for all policy decisions and actions taken by the Institute. This work is governed by the Institute's Royal Charter, its associated Bye-laws and such policies as are deemed necessary.

Council meets at least twice a year (in 2021 Council met four times: in March, July, September and December) in order to agree and monitor progress on the Institute's strategic objectives.

The day to day management of the CIH is undertaken by the Management Board. Invitations are circulated to members to nominate corporate members to be elected to the Council of Trustees and voted on by members at the next Annual General Meeting. Consideration is made to any skills gaps present within the Council when recruiting new trustees. Trustees receive training on their legal obligations and those of the Charter and Bye-laws through use of a Trustee handbook and Charity Commission guidelines.

In 2021 the Institute published revised Equality & Diversity and Bullying & Harassment Policies.

## Council of Trustees

**President:** Susan Nicholas FCIHort

**President Elect:**

David Richardson CHort FCIHort

**Honorary Treasurer:** Gabriel Roe FCIHort

**Honorary Secretary:** Jason Daff MCIHort

**Immediate Past President:**

Gerald Bonner CHort FCIHort

**Chair of Education Committee:**

Dr David Elphinstone MCIHort

**Edible Sector Representative:**

James Simpson

**Botanical Sector Representative:**

Richard Barley MCIHort

**South West:** Saul Walker MCIHort

**South East:** Angela Evans FCIHort

**Eastern:** John Cappalonga MCIHort

**West Midlands & South Wales:**

Paul Mann MCIHort

**North West & North Wales:**

Phil Pearson FCIHort

**Northern:** Jason Daff MCIHort

**Scotland:** George Gilchrist FCIHort

**Ireland:** Dr Owen Doyle CHort FCIHort



# Trustees Elected in 2021

## David Richardson CHort FCIHort

David is Director of Horticulture at the Commonwealth War Graves Commission which has a global historic estate spanning over 150 countries. With over 850 horticulturists it is one of the world's great gardening organisations. David is responsible for global standards, policy and leads the implementation of the organisation's sustainability targets; including reduction in chemical use and water for irrigation. He graduated in Horticulture from Bath University and since then has worked predominantly within the horticultural industry. David is also a Trustee of the Royal Botanic Gardens Kew, a Liveryman of Worshipful Company of Gardeners and Honorary Practitioner in the School of History, University of Kent as well as a recent winner of Horticulture Week's 'Custodian of the Year Award'.



## Paul Mann MCIHort

Paul was born into a farming and market gardening family and took an interest at a very early age. This has continued throughout his working life in the private landscape sector and amenity horticulture with various local authorities in the UK and abroad. He is currently employed by Pembrey and Burry Port Town Council in South Wales as their Cemetery and Facilities Superintendent, managing the Cemetery, grounds, and floral displays. He joined the Institute in 2016 and now represents the West Midlands & South Wales Branch on Council.



## Richard Barley MCIHort

Richard has been Director of Gardens at the Royal Botanic Gardens Kew since 2013, having relocated from Victoria, Australia. He was formerly Chief Executive Officer of Open Gardens Australia, before that a Director within the Royal Botanic Gardens Melbourne, where he worked for 30 years. Richard has extensive experience of balancing the needs of a world-class horticultural site and visitor attraction, while maintaining and developing important scientific living collections. In his current role he has overall responsibility for the living collections and landscapes of the Kew and Wakehurst sites, and also for Kew's School of Horticulture, Learning and Participation programmes, Interpretation and Safeguarding. Richard holds a degree in Applied Science (Horticulture) from Burnley College, University of Melbourne. He is also a Trustee of the Castle Howard Arboretum Trust, the National Garden Scheme, the Kew Guild and is a Liveryman of the Worshipful Company of Gardeners.



## Saul Walker MCIHort

Saul is Head Gardener of the 12-acre private estate Stonelands House in Devon. He originally trained as an Archaeologist before undertaking an apprenticeship with the National Trust at Antony House, near Torpoint. He was later accepted to study and work at RBG Kew. On graduating he joined the RHS as a Flower Show Manager, firstly at the Hampton Court Palace Flower Show and then Chelsea; commissioning and managing exhibits, gardens, and the floral marquee. He is also a trustee at the Garden House, Yelverton and the Devon Gardens Trust. A member of the RHS Tender Plant Committee, a British Orchid Council judge and host of a regular gardening podcast called 'Talking Heads' with fellow Head Gardener Lucy Chamberlain.





**Bankers**

HSBC Bank Plc

**Independent Financial Examiner**

Helen Furlong FCCA, McLintocks (NW) Limited,  
Wirral, Merseyside

**Secretariat**

British Growers Association  
Secretariat Manager: Rachel Kemp

**Chartered Institute of Horticulture**

BGA House  
Nottingham Road  
Louth  
Lincolnshire  
LN11 0WB

t 03330 050181

✉ [cih@horticulture.org.uk](mailto:cih@horticulture.org.uk)

🌐 [www.horticulture.org.uk](http://www.horticulture.org.uk)



## **Chartered Institute of Horticulture**

Chartered Institute of Horticulture  
BGA House  
Nottingham Road  
Louth  
Lincolnshire  
LN11 0WB

McLintocks (NW) Limited  
46 Hamilton Square  
Birkenhead  
Wirral  
CH41 5AR

Dear Sirs,

We hereby confirm to the best of our knowledge and belief, having made appropriate enquiries of other trustees and officials of the charity, the following representations given to you in connection with the independent examination of the financial statements for the period ended 31 December 2021.

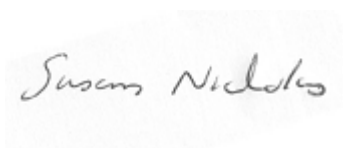
### **Representations**

1. We acknowledge as trustees our responsibility for making accurate representations to you and for the accounts which you have prepared on our behalf for the charity.
2. We confirm that all accounting records have been made available to you for the purpose of your independent examination and that all the transactions undertaken by the charity have been properly reflected and recorded in the accounting records. All other records and related information, including minutes of all trustees and members' meetings, have been made available to you.
3. We confirm that, at the balance sheet date, the charity had no liabilities or provisions other than those recognised and no contingent liabilities other than those disclosed in the financial statements.
4. We confirm that there had been no events since the balance sheet date which require disclosure or which would materially affect the amounts in the financial statements, other than those already disclosed or included in the financial statements.
5. We confirm that the charity has not contracted for any capital expenditure other than as disclosed in the financial statements.
6. We confirm that there are no laws or regulations that are central to the charity's ability to carry on its activities.



7. We confirm that, in our opinion, the charity's financial statements should be prepared on the grounds that current and future sources of funding or support will be more than adequate for the charity's needs.
8. We confirm that you were not aware of any transactions with related parties requiring disclosure in the financial statements.
9. We confirm that all grants, donations and other income, including those subject to special terms or conditions or received for restricted purposes, have been notified to you. There have been no breaches of terms or conditions during the period regarding the application of such income.
10. We acknowledge our responsibility for the design and implementation of internal controls to prevent and detect fraud. We confirm that we have disclosed to you the results of our own assessment of the risk of fraud in the charity.
11. We confirm that there have been no actual or suspected instances of fraud involving trustees, management or employees who have a significant role in internal control or that could have a material effect on the financial statements. We also confirm that we are not aware of any allegations or fraud by former trustees, employees, regulators or others.
12. We confirm that we are not aware of any matters of material significance that should be reported to the Charity Commission.

We confirm that the above representations are made on the basis of enquiries of management and staff with relevant knowledge and experience (and, where appropriate, of inspection of supporting documentation) sufficient to satisfy us that we can properly make each of the above representations to you.



Trustee



Treasurer

Date 4 April 2022

Signed on behalf of the board of trustees  
of Chartered Institute of Horticulture

**THE CHARTERED INSTITUTE OF HORTICULTURE**  
**ANNUAL REPORT AND UNAUDITED FINANCIAL STATEMENTS**  
**FOR THE YEAR ENDED 31 DECEMBER 2021**

# **THE CHARTERED INSTITUTE OF HORTICULTURE**

## **STATEMENT OF TRUSTEES' RESPONSIBILITIES**

***FOR THE YEAR ENDED 31 DECEMBER 2021***

---

The trustees are responsible for preparing the Trustees' Report and the financial statements in accordance with applicable law and United Kingdom Accounting Standards (United Kingdom Generally Accepted Accounting Practice).

The law applicable to charities in England and Wales requires the trustees to prepare financial statements for each financial year which give a true and fair view of the state of affairs of the charity and of the incoming resources and application of resources of the charity for that year.

In preparing these financial statements, the trustees are required to:

- select suitable accounting policies and then apply them consistently;
- observe the methods and principles in the Charities SORP;
- make judgements and estimates that are reasonable and prudent;
- state whether applicable accounting standards have been followed, subject to any material departures disclosed and explained in the financial statements; and
- prepare the financial statements on the going concern basis unless it is inappropriate to presume that the charity will continue in operation.

The trustees are responsible for keeping sufficient accounting records that disclose with reasonable accuracy at any time the financial position of the charity and enable them to ensure that the financial statements comply with the Charities Act 2011, the Charity (Accounts and Reports) Regulations 2008 and the provisions of the trust deed. They are also responsible for safeguarding the assets of the charity and hence for taking reasonable steps for the prevention and detection of fraud and other irregularities.



# THE CHARTERED INSTITUTE OF HORTICULTURE

## INDEPENDENT EXAMINER'S REPORT

### TO THE TRUSTEES OF THE CHARTERED INSTITUTE OF HORTICULTURE

---

I report to the trustees on my examination of the financial statements of The Chartered Institute of Horticulture (the charity) for the year ended 31 December 2021.

#### **Responsibilities and basis of report**

As the trustees of the charity you are responsible for the preparation of the financial statements in accordance with the requirements of the Charities Act 2011 (the 2011 Act).

I report in respect of my examination of the charity's financial statements carried out under section 145 of the 2011 Act. In carrying out my examination I have followed all the applicable Directions given by the Charity Commission under section 145(5)(b) of the 2011 Act.

#### **Independent examiner's statement**

Your attention is drawn to the fact that the charity has prepared financial statements in accordance with Accounting and Reporting by Charities preparing their accounts in accordance with the Financial Reporting Standard applicable in the UK and Republic of Ireland (FRS 102) in preference to the Accounting and Reporting by Charities: Statement of Recommended Practice issued on 1 April 2005 which is referred to in the extant regulations but has now been withdrawn.

I understand that this has been done in order for financial statements to provide a true and fair view in accordance with Generally Accepted Accounting Practice effective for reporting periods beginning on or after 1 January 2015.

I have completed my examination. I confirm that no matters have come to my attention in connection with the examination giving me cause to believe that in any material respect:

- 1 accounting records were not kept in respect of the charity as required by section 130 of the 2011 Act; or
- 2 the financial statements do not accord with those records; or
- 3 the financial statements do not comply with the applicable requirements concerning the form and content of accounts set out in the Charities (Accounts and Reports) Regulations 2008 other than any requirement that the accounts give a true and fair view which is not a matter considered as part of an independent examination.

I have no concerns and have come across no other matters in connection with the examination to which attention should be drawn in this report in order to enable a proper understanding of the financial statements to be reached.

**Helen Furlong FCCA**  
**McLintocks (NW) Limited**

46 Hamilton Square  
Birkenhead  
Wirral  
Merseyside  
CH41 5AR

Dated: .....

# THE CHARTERED INSTITUTE OF HORTICULTURE

## STATEMENT OF FINANCIAL ACTIVITIES

FOR THE YEAR ENDED 31 DECEMBER 2021

Current financial year		Unrestricted funds general	Unrestricted funds designated	Restricted funds	Endowment funds	Total	Total
	Notes	2021 £	2021 £	2021 £	2021 £	2021 £	2020 £
<b>Income from:</b>							
Donations and legacies	2	131,711	526	-	-	132,237	250,276
Charitable activities	3	5,026	5,750	20,138	-	30,914	7,479
Investments	4	387	607	-	504	1,498	1,742
<b>Total income and endowments</b>		<b>137,124</b>	<b>6,883</b>	<b>20,138</b>	<b>504</b>	<b>164,649</b>	<b>259,497</b>
<b>Expenditure on:</b>							
Raising funds	5	109	179	-	148	436	392
Charitable activities	6	135,471	5,436	16,409	-	157,316	101,752
<b>Total resources expended</b>		<b>135,580</b>	<b>5,615</b>	<b>16,409</b>	<b>148</b>	<b>157,752</b>	<b>102,144</b>
Net gains/(losses) on investments	10	3,458	5,671	-	4,704	13,833	(4,924)
<b>Net movement in funds</b>		<b>5,002</b>	<b>6,939</b>	<b>3,729</b>	<b>5,060</b>	<b>20,730</b>	<b>152,429</b>
Fund balances at 1 January 2021		269,667	62,718	5,550	35,261	373,196	220,767
<b>Fund balances at 31 December 2021</b>		<b>274,669</b>	<b>69,657</b>	<b>9,279</b>	<b>40,321</b>	<b>393,926</b>	<b>373,196</b>

The statement of financial activities includes all gains and losses recognised in the year.

All income and expenditure derive from continuing activities.

# THE CHARTERED INSTITUTE OF HORTICULTURE

## STATEMENT OF FINANCIAL ACTIVITIES (CONTINUED)

FOR THE YEAR ENDED 31 DECEMBER 2021

Prior financial year

		Unrestricted funds general 2020 £	Unrestricted funds designated 2020 £	Restricted funds 2020 £	Endowment funds 2020 £	Total 2020 £
	Notes					
<b>Income from:</b>						
Donations and legacies	2	238,410	11,866	-	-	250,276
Charitable activities	3	4,854	2,625	-	-	7,479
Investments	4	611	618	-	513	1,742
<b>Total income and endowments</b>		<b>243,875</b>	<b>15,109</b>	<b>-</b>	<b>513</b>	<b>259,497</b>
<b>Expenditure on:</b>						
Raising funds	5	122	147	-	123	392
Charitable activities	6	92,329	3,893	5,530	-	101,752
<b>Total resources expended</b>		<b>92,451</b>	<b>4,040</b>	<b>5,530</b>	<b>123</b>	<b>102,144</b>
Net gains/(losses) on investments	10	(1,525)	(1,857)	-	(1,542)	(4,924)
<b>Net movement in funds</b>		<b>149,899</b>	<b>9,212</b>	<b>(5,530)</b>	<b>(1,152)</b>	<b>152,429</b>
Fund balances at 1 January 2020		119,768	53,507	11,079	36,413	220,767
<b>Fund balances at 31 December 2020</b>		<b>269,667</b>	<b>62,719</b>	<b>5,549</b>	<b>35,261</b>	<b>373,196</b>

The statement of financial activities includes all gains and losses recognised in the year.

All income and expenditure derive from continuing activities.



# THE CHARTERED INSTITUTE OF HORTICULTURE

## BALANCE SHEET

AS AT 31 DECEMBER 2021

	Notes	2021 £	£	2020 £	£
<b>Fixed assets</b>					
Tangible assets	11		18,710		17,524
Investments	12		127,934		113,056
			<u>146,644</u>		<u>130,580</u>
<b>Current assets</b>					
Stocks		2,867		3,022	
Debtors	14	14,365		-	
Cash at bank and in hand		237,749		245,989	
		<u>254,981</u>		<u>249,011</u>	
<b>Creditors: amounts falling due within one year</b>	15	(7,699)		(6,395)	
Net current assets			<u>247,282</u>		<u>242,616</u>
<b>Total assets less current liabilities</b>			<u><u>393,926</u></u>		<u><u>373,196</u></u>
<b>Capital funds</b>					
Endowment funds	16		40,321		35,261
<b>Income funds</b>					
Restricted funds	17		9,279		5,549
Unrestricted funds			344,326		332,386
			<u><u>393,926</u></u>		<u><u>373,196</u></u>

The financial statements were approved by the Trustees on 4 April 2022



.....  
S Nicholas FCIHort President  
**Trustee**



.....  
G Roe FCIHort, Honorary Treasurer  
**Trustee**

# THE CHARTERED INSTITUTE OF HORTICULTURE

## NOTES TO THE FINANCIAL STATEMENTS

### FOR THE YEAR ENDED 31 DECEMBER 2021

---

#### **1 Accounting policies**

##### **1.1 Accounting convention**

The financial statements have been prepared in accordance with the charity's [governing document], the Charities Act 2011 and "Accounting and Reporting by Charities: Statement of Recommended Practice applicable to charities preparing their accounts in accordance with the Financial Reporting Standard applicable in the UK and Republic of Ireland (FRS 102)" (as amended for accounting periods commencing from 1 January 2016). The charity is a Public Benefit Entity as defined by FRS 102.

The charity has taken advantage of the provisions in the SORP for charities applying FRS 102 Update Bulletin 1 not to prepare a Statement of Cash Flows.

The financial statements are prepared in sterling, which is the functional currency of the charity. Monetary amounts in these financial statements are rounded to the nearest £.

The financial statements have been prepared under the historical cost convention, modified to include certain financial instruments at fair value. The principal accounting policies adopted are set out below.

##### **1.2 Going concern**

At the time of approving the financial statements, the trustees have a reasonable expectation that the charity has adequate resources to continue in operational existence for the foreseeable future. Thus the trustees continue to adopt the going concern basis of accounting in preparing the financial statements.

##### **1.3 Charitable funds**

Unrestricted funds are available for use at the discretion of the trustees in furtherance of their charitable objectives.

Designated funds are unrestricted funds set aside for specific purposes at the discretion of the trustees.

Restricted funds are subject to specific conditions by donors as to how they may be used. The purposes and uses of the restricted funds are set out in the notes to the financial statements.

Endowment funds are subject to specific conditions by donors that the capital must be maintained by the charity.

##### **1.4 Incoming resources**

Voluntary income including donations, gifts, legacies and grants that provide core funding or are of a general nature is recognised when the charity entitlement to the income, it is probable that the income will be received and the amount can be measured with sufficient reliability.

###### **Donations and Legacies**

Donations and legacies are recognised on a receivable basis when receipt is probable and the amount can be reliably measured.

###### **Investment income**

Interest on funds held on deposit is included when receivable and the amount can be measured reliably by the charity; this is normally upon notification of the interest paid or payable by the bank. Dividends are recognised once the dividend has been declared and notification has been received of the dividend due.

# THE CHARTERED INSTITUTE OF HORTICULTURE

## NOTES TO THE FINANCIAL STATEMENTS (CONTINUED)

### FOR THE YEAR ENDED 31 DECEMBER 2021

---

#### 1 Accounting policies

##### 1.5 Resources expended

All expenditure is recognised once there is a legal or constructive obligation to that expenditure, it is probable settlement is required and the amount can be measured reliably. All costs are allocated to the applicable expenditure heading that aggregate similar costs to that category. Where costs cannot be directly attributed to particular headings they have been allocated on a basis consistent with the use of resources, with central staff costs allocated on the basis of time spent, and depreciation charges allocated on the portion of the asset's use. Other support costs are allocated based on the spread of staff costs.

##### Raising funds

These are costs incurred in attracting voluntary income, the management of investments and those incurred in trading activities that raise funds.

##### Charitable activities

Charitable expenditure comprises those costs incurred by the charity in the delivery of its activities and services for its beneficiaries. It includes both costs that can be allocated directly to such activities and those costs of an indirect nature necessary to support them.

##### Governance costs

These include the costs attributable to the charity's compliance with constitutional and statutory requirements, including audit, strategic management and trustees's meetings and reimbursed expenses.

##### 1.6 Tangible fixed assets

Tangible fixed assets are initially measured at cost and subsequently measured at cost or valuation, net of depreciation and any impairment losses.

Depreciation is recognised so as to write off the cost or valuation of assets less their residual values over their useful lives on the following bases:

Fixtures and fittings	33% on cost & 10% reducing balance
-----------------------	------------------------------------

The gain or loss arising on the disposal of an asset is determined as the difference between the sale proceeds and the carrying value of the asset, and is recognised in net income/(expenditure) for the year.

Individual fixed assets costing £100 or more are initially recorded at cost.

##### 1.7 Fixed asset investments

Fixed asset investments, other than programme related investments, are included at market value at the balance sheet date. Realised gains and losses on investments are calculated as the difference between sales proceeds and their market value at the start of the year, or their subsequent cost, and are charged or credited to the Statement of Financial Activities in the period of disposal.

Unrealised gains and losses represent the movement in market values during the year and are credited or charged to the Statement of Financial Activities based on the market value at the year end.

##### 1.8 Impairment of fixed assets

At each reporting end date, the charity reviews the carrying amounts of its tangible assets to determine whether there is any indication that those assets have suffered an impairment loss. If any such indication exists, the recoverable amount of the asset is estimated in order to determine the extent of the impairment loss (if any).



# THE CHARTERED INSTITUTE OF HORTICULTURE

## NOTES TO THE FINANCIAL STATEMENTS (CONTINUED)

### FOR THE YEAR ENDED 31 DECEMBER 2021

---

#### 1 Accounting policies

##### 1.9 Stocks

Stocks are stated at the lower of cost and estimated selling price less costs to complete and sell. Cost comprises direct materials and, where applicable, direct labour costs and those overheads that have been incurred in bringing the stocks to their present location and condition. Items held for distribution at no or nominal consideration are measured the lower of replacement cost and cost.

Net realisable value is the estimated selling price less all estimated costs of completion and costs to be incurred in marketing, selling and distribution.

##### 1.10 Cash and cash equivalents

Cash and cash equivalents include cash in hand, deposits held at call with banks, other short-term liquid investments with original maturities of three months or less, and bank overdrafts. Bank overdrafts are shown within borrowings in current liabilities.

##### 1.11 Financial instruments

The charity has elected to apply the provisions of Section 11 'Basic Financial Instruments' and Section 12 'Other Financial Instruments Issues' of FRS 102 to all of its financial instruments.

Financial instruments are recognised in the charity's balance sheet when the charity becomes party to the contractual provisions of the instrument.

Financial assets and liabilities are offset, with the net amounts presented in the financial statements, when there is a legally enforceable right to set off the recognised amounts and there is an intention to settle on a net basis or to realise the asset and settle the liability simultaneously.

##### **Basic financial assets**

Basic financial assets, which include debtors and cash and bank balances, are initially measured at transaction price including transaction costs and are subsequently carried at amortised cost using the effective interest method unless the arrangement constitutes a financing transaction, where the transaction is measured at the present value of the future receipts discounted at a market rate of interest. Financial assets classified as receivable within one year are not amortised.

##### **Basic financial liabilities**

Basic financial liabilities, including creditors and bank loans are initially recognised at transaction price unless the arrangement constitutes a financing transaction, where the debt instrument is measured at the present value of the future payments discounted at a market rate of interest. Financial liabilities classified as payable within one year are not amortised.

Debt instruments are subsequently carried at amortised cost, using the effective interest rate method.

Trade creditors are obligations to pay for goods or services that have been acquired in the ordinary course of operations from suppliers. Amounts payable are classified as current liabilities if payment is due within one year or less. If not, they are presented as non-current liabilities. Trade creditors are recognised initially at transaction price and subsequently measured at amortised cost using the effective interest method.

##### 1.12 Employee benefits

The cost of any unused holiday entitlement is recognised in the period in which the employee's services are received.

Termination benefits are recognised immediately as an expense when the charity is demonstrably committed to terminate the employment of an employee or to provide termination benefits.

# THE CHARTERED INSTITUTE OF HORTICULTURE

## NOTES TO THE FINANCIAL STATEMENTS (CONTINUED)

FOR THE YEAR ENDED 31 DECEMBER 2021

### 1 Accounting policies

#### 1.13 Retirement benefits

Payments to defined contribution retirement benefit schemes are charged as an expense as they fall due.

### 2 Donations and legacies

	Unrestricted funds general 2021 £	Unrestricted funds designated 2021 £	Total 2021 £	Unrestricted funds general 2020 £	Unrestricted funds designated 2020 £	Total 2020 £
Regular giving and capital donations	131,711	-	131,711	123,524	-	123,524
Legacies receivable	-	-	-	114,886	-	114,886
Donations from individuals	-	526	526	-	11,866	11,866
	<u>131,711</u>	<u>526</u>	<u>132,237</u>	<u>238,410</u>	<u>11,866</u>	<u>250,276</u>

**THE CHARTERED INSTITUTE OF HORTICULTURE**  
**NOTES TO THE FINANCIAL STATEMENTS (CONTINUED)**  
**FOR THE YEAR ENDED 31 DECEMBER 2021**

**3 Charitable activities**

	<b>Membership services</b>	<b>Awards and scholarships</b>
	<b>2021</b>	<b>2021</b>
	<b>£</b>	<b>£</b>
Income from charitable activities	5,026	25,888
Analysis by fund		
Unrestricted funds - general	5,026	-
Unrestricted funds - designated	-	5,750
Restricted funds	-	20,138
	5,026	25,888

**For the year ended 31 December 2020**

	<b>Membership services</b>	<b>Awards and scholarships</b>
	<b>£</b>	<b>£</b>
Income from charitable activities	4,854	2,625
Analysis by fund		
Unrestricted funds - general	4,854	-
Unrestricted funds - designated	-	2,625
Restricted funds	-	-
	5,040	34,698

# THE CHARTERED INSTITUTE OF HORTICULTURE

## NOTES TO THE FINANCIAL STATEMENTS (CONTINUED)

FOR THE YEAR ENDED 31 DECEMBER 2021

### 4 Investments

	Unrestricted funds general 2021 £	Unrestricted funds designated 2021 £	Endowment funds 2021 £	Total 2021 £
Income from listed investments	370	607	504	1,481
Interest receivable	17	-	-	17
	<u>387</u>	<u>607</u>	<u>504</u>	<u>1,498</u>

#### For the year ended 31 December 2020

	£	£	£	£
Income from listed investments	508	618	513	1,639
Interest receivable	103	-	-	103
	<u>611</u>	<u>618</u>	<u>513</u>	<u>1,742</u>

### 5 Raising funds

	Unrestricted funds general 2021 £	Unrestricted funds designated 2021 £	Endowment funds 2021 £	Total 2021 £
Investment management	109	179	148	436
	<u>109</u>	<u>179</u>	<u>148</u>	<u>436</u>

	£	£	£	£
Investment management	122	147	123	392
	<u>122</u>	<u>147</u>	<u>123</u>	<u>392</u>



# THE CHARTERED INSTITUTE OF HORTICULTURE

## NOTES TO THE FINANCIAL STATEMENTS (CONTINUED)

### FOR THE YEAR ENDED 31 DECEMBER 2021

#### 6 Charitable activities

	Info provision & education	Membership services	Awards and scholarships	Young Horticulturist of the Year	Total 2021
	2021 £	2021 £	2021 £	2021 £	£
Depreciation and impairment	11,615	-	-	-	11,615
AGM & Conference costs	68	-	-	-	68
Project costs	-	-	-	21,156	21,156
Insurance	1,086	-	-	-	1,086
Postage, telephone & internet	500	58	-	-	558
Sundry expenses	1,916	-	-	-	1,916
Travel & meeting expenses	4,718	342	-	-	5,060
Shows & Publicity	274	-	-	-	274
The Horticulturist	16,445	-	-	-	16,445
Website maintenance	3,550	-	-	-	3,550
Bank charges	-	751	-	-	751
Donations	-	204	-	-	204
	<u>40,172</u>	<u>1,355</u>	<u>-</u>	<u>21,156</u>	<u>62,683</u>
Share of support costs (see note 7)	38,165	18,174	22,718	11,811	90,868
Share of governance costs (see note 7)	3,765	-	-	-	3,765
	<u>82,102</u>	<u>19,529</u>	<u>22,718</u>	<u>32,967</u>	<u>157,316</u>
<b>Analysis by fund</b>					
Unrestricted funds - general	82,102	18,840	22,718	11,811	135,471
Unrestricted funds - designated	-	689	-	4,747	5,436
Restricted funds	-	-	-	16,409	16,409
	<u>82,102</u>	<u>19,529</u>	<u>22,718</u>	<u>32,967</u>	<u>157,316</u>

**THE CHARTERED INSTITUTE OF HORTICULTURE**

**NOTES TO THE FINANCIAL STATEMENTS (CONTINUED)**

**FOR THE YEAR ENDED 31 DECEMBER 2021**

**6 Charitable activities**

For the year ended 31 December 2020

	Info provision & education	Membership services	Awards and scholarships	Young Horticulturist of the Year	Total 2020
	£	£	£	£	£
Depreciation and impairment	10,055	-	-	-	10,055
AGM & Conference costs	1,568	-	-	-	1,568
Project costs	-	-	-	8,820	8,820
Insurance	861	-	-	-	861
Postage, telephone & internet	-	12	-	-	12
Corporate memberships	-	1,121	-	-	1,121
Sundry expenses	192	-	-	-	192
Travel & meeting expenses	1,224	392	-	-	1,616
Shows & Publicity	6	-	-	-	6
The Horticulturist	18,016	-	-	-	18,016
Website maintenance	3,496	-	-	-	3,496
Bank charges	-	1,476	-	-	1,476
Donations	-	280	-	-	280
	<u>35,418</u>	<u>3,281</u>	<u>-</u>	<u>8,820</u>	<u>47,519</u>
Share of support costs (see note 7)	21,195	10,093	12,616	6,560	50,464
Share of governance costs (see note 7)	<u>3,769</u>	<u>-</u>	<u>-</u>	<u>-</u>	<u>3,769</u>
	<u>60,382</u>	<u>13,374</u>	<u>12,616</u>	<u>15,380</u>	<u>101,752</u>
<b>Analysis by fund</b>					
Unrestricted funds - general	60,382	12,771	12,616	6,560	92,329
Unrestricted funds - designated	-	603	-	3,290	3,893
Restricted funds	<u>-</u>	<u>-</u>	<u>-</u>	<u>5,530</u>	<u>5,530</u>
	<u>60,382</u>	<u>13,374</u>	<u>12,616</u>	<u>15,380</u>	<u>101,752</u>

# THE CHARTERED INSTITUTE OF HORTICULTURE

## NOTES TO THE FINANCIAL STATEMENTS (CONTINUED)

FOR THE YEAR ENDED 31 DECEMBER 2021

### 7 Support costs

	Support costs £	Governance costs £	2021 Support costs £	Governance costs £	2020 £
Staff costs	31,328	-	31,328	-	-
Printing, postage, stationery & Other expenses	7,981	-	7,981	1,466	1,466
Secretariat costs	50,575	-	50,575	48,998	48,998
Development Officer expenses	984	-	984	-	-
Independent examiners fees	-	3,000	3,000	-	3,000
Professional indemnity insurance	-	765	765	-	769
	<u>90,868</u>	<u>3,765</u>	<u>94,633</u>	<u>50,464</u>	<u>54,233</u>
Analysed between Charitable activities	<u>90,868</u>	<u>3,765</u>	<u>94,633</u>	<u>50,464</u>	<u>54,233</u>

### 8 Trustees

None of the trustees (or any persons connected with them) received any remuneration during the year, but 6 of the trustees were reimbursed a total of £6,740 travelling expenses (2020- 5 were reimbursed £1,224).

### 9 Employees

#### Number of employees

The average monthly number of employees during the year was:

	2021 Number	2020 Number
Support Development Officer	<u>1</u>	<u>-</u>

#### Employment costs

	2021 £	2020 £
Wages and salaries	30,413	-
Other pension costs	<u>915</u>	<u>-</u>
	<u>31,328</u>	<u>-</u>

There were no employees whose annual remuneration was £60,000 or more.

**THE CHARTERED INSTITUTE OF HORTICULTURE**  
**NOTES TO THE FINANCIAL STATEMENTS (CONTINUED)**  
**FOR THE YEAR ENDED 31 DECEMBER 2021**

**10 Net gains/(losses) on investments**

	Unrestricted funds general 2021 £	Unrestricted funds designated 2021 £	Endowment funds 2021 £	Total 2021 £
Revaluation of investments	3,458	5,671	4,704	13,833
<b>For the year ended 31 December 2020</b>	<b>£</b>	<b>£</b>	<b>£</b>	<b>£</b>
Revaluation of investments	(1,525)	(1,857)	(1,542)	(4,924)

**11 Tangible fixed assets**

	Fixtures and fittings £
<b>Cost</b>	
At 1 January 2021	60,022
Additions	12,801
At 31 December 2021	72,823
<b>Depreciation and impairment</b>	
At 1 January 2021	42,498
Depreciation charged in the year	11,615
At 31 December 2021	54,113
<b>Carrying amount</b>	
At 31 December 2021	18,710
At 31 December 2020	17,524



**THE CHARTERED INSTITUTE OF HORTICULTURE**  
**NOTES TO THE FINANCIAL STATEMENTS (CONTINUED)**  
**FOR THE YEAR ENDED 31 DECEMBER 2021**

**12 Fixed asset investments**

	<b>Listed investments £</b>
<b>Cost or valuation</b>	
At 1 January 2021	113,056
Additions	1,481
Valuation changes	13,833
Disposals	(436)
	<hr/>
At 31 December 2021	127,934
	<hr/>
<b>Carrying amount</b>	
At 31 December 2021	127,934
	<hr/>
At 31 December 2020	113,056
	<hr/>

<b>13 Financial instruments</b>	<b>2021 £</b>	<b>2020 £</b>
<b>Carrying amount of financial assets</b>		
Instruments measured at fair value through profit or loss	127,934	113,056
	<hr/>	<hr/>

<b>14 Debtors</b>	<b>2021 £</b>	<b>2020 £</b>
<b>Amounts falling due within one year:</b>		
Prepayments and accrued income	14,365	-
	<hr/>	<hr/>

<b>15 Creditors: amounts falling due within one year</b>	<b>2021 £</b>	<b>2020 £</b>
Other taxation and social security	605	-
Trade creditors	3,890	3,395
Other creditors	204	-
Accruals and deferred income	3,000	3,000
	<hr/>	<hr/>
	7,699	6,395
	<hr/>	<hr/>

# THE CHARTERED INSTITUTE OF HORTICULTURE

## NOTES TO THE FINANCIAL STATEMENTS (CONTINUED)

### FOR THE YEAR ENDED 31 DECEMBER 2021

#### 16 Endowment funds

Endowment funds represent assets which must be held permanently by the charity. Income arising on the endowment funds can be used in accordance with the objects of the charity and is included as unrestricted income. Any capital gains or losses arising on the assets form part of the fund.

	Movement in funds				
	Balance at 1 January 2021	Incoming resources	Resources expended	Transfers	Revaluations gains and losses
	£	£	£	£	£
<b>Permanent endowments</b>					
Aberconway Fund	32,158	460	(135)	-	4,288
James Bruce Fund	3,103	45	(13)	-	415
	<u>35,261</u>	<u>505</u>	<u>(148)</u>	<u>-</u>	<u>4,703</u>
					<u>40,321</u>

#### Prior financial year

	Movement in funds				
	Balance at 1 January 2020	Incoming resources	Resources expended	Transfers	Revaluations gains and losses
	£	£	£	£	£
<b>Permanent endowments</b>					
Aberconway Fund	33,210	469	(112)	-	(1,409)
James Bruce Fund	3,203	44	(11)	-	(133)
	<u>36,413</u>	<u>513</u>	<u>(123)</u>	<u>-</u>	<u>(1,542)</u>
					<u>35,261</u>

# THE CHARTERED INSTITUTE OF HORTICULTURE

## NOTES TO THE FINANCIAL STATEMENTS (CONTINUED)

### FOR THE YEAR ENDED 31 DECEMBER 2021

#### 17 Restricted funds

The income funds of the charity include restricted funds comprising the following unexpended balances of donations and grants held on trust for specific purposes:

	Movement in funds		
	Balance at 1 January 2021	Incoming resources	Resources expended
	£	£	£
Young Horticulturist of the Year	5,550	20,138	(16,409)
	<u>5,550</u>	<u>20,138</u>	<u>(16,409)</u>

	Movement in funds		
	Balance at 1 January 2020	Incoming resources	Resources expended
	£	£	£
Young Horticulturist of the Year	11,079		(5,530)
GROW	-	-	-
	<u>11,079</u>	<u>-</u>	<u>(5,530)</u>

**THE CHARTERED INSTITUTE OF HORTICULTURE**  
**NOTES TO THE FINANCIAL STATEMENTS (CONTINUED)**  
**FOR THE YEAR ENDED 31 DECEMBER 2021**

**18 Unrestricted funds - designated**

These are unrestricted funds which are material to the charity's activities made up as follows:

	<b>Movement in funds</b>			
	<b>Balance at 1 January 2021</b>	<b>Incoming resources</b>	<b>Resources expended</b>	<b>Revaluations, gains and losses</b>
	<b>£</b>	<b>£</b>	<b>£</b>	<b>£</b>
Norah Stucken fund	42,017	607	(179)	5,671
Branch fund	20,701	6,278	(5,438)	-
	<u>62,718</u>	<u>6,885</u>	<u>(5,617)</u>	<u>5,671</u>
	<u>62,718</u>	<u>6,885</u>	<u>(5,617)</u>	<u>5,671</u>

**Prior financial year**

	<b>Movement in funds</b>			
	<b>Balance at 1 January 2021</b>	<b>Incoming resources</b>	<b>Resources expended</b>	<b>Revaluations, gains and losses</b>
	<b>£</b>	<b>£</b>	<b>£</b>	<b>£</b>
Norah Stucken fund	45,868	618	(147)	(1,857)
Branch fund	8,528	14,491	(3,893)	-
	<u>53,507</u>	<u>15,109</u>	<u>(4,040)</u>	<u>(1,857)</u>
	<u>53,507</u>	<u>15,109</u>	<u>(4,040)</u>	<u>(1,857)</u>

**19 Analysis of net assets between funds**

	<b>General 2021</b>	<b>Designated 2021</b>	<b>Restricted 2021</b>	<b>Permanent 2021</b>	<b>Total 2021</b>
	<b>£</b>	<b>£</b>	<b>£</b>	<b>£</b>	<b>£</b>
Tangible assets	18,710	-	-	-	18,710
Investments	31,984	52,453	-	43,497	127,934
Current assets/(liabilities)	223,975	17,204	9,279	(3,176)	247,282
	<u>274,669</u>	<u>69,657</u>	<u>9,279</u>	<u>40,321</u>	<u>393,926</u>
	<u>274,669</u>	<u>69,657</u>	<u>9,279</u>	<u>40,321</u>	<u>393,926</u>

	<b>General 2020</b>	<b>Designated 2020</b>	<b>Restricted 2020</b>	<b>Permanent 2020</b>	<b>Total 2020</b>
	<b>£</b>	<b>£</b>	<b>£</b>	<b>£</b>	<b>£</b>
Tangible assets	17,524	-	-	-	17,524
Investments	35,047	42,622	-	35,387	113,056
Current assets/(liabilities)	217,096	20,097	5,549	(126)	242,616
	<u>269,667</u>	<u>62,719</u>	<u>5,549</u>	<u>35,261</u>	<u>373,196</u>
	<u>269,667</u>	<u>62,719</u>	<u>5,549</u>	<u>35,261</u>	<u>373,196</u>

**THE CHARTERED INSTITUTE OF HORTICULTURE**  
**NOTES TO THE FINANCIAL STATEMENTS (CONTINUED)**  
***FOR THE YEAR ENDED 31 DECEMBER 2021***

---

**20 Related party transactions**

There were no disclosable related party transactions during the year (2020 - none).



## **Chartered Institute of Horticulture**

Chartered Institute of Horticulture  
BGA House  
Nottingham Road  
Louth  
Lincolnshire  
LN11 0WB

McLintocks (NW) Limited  
46 Hamilton Square  
Birkenhead  
Wirral  
CH41 5AR

Dear Sirs,

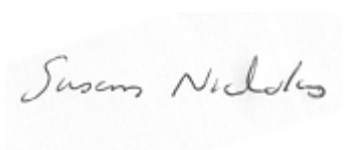
We hereby confirm to the best of our knowledge and belief, having made appropriate enquiries of other trustees and officials of the charity, the following representations given to you in connection with the independent examination of the financial statements for the period ended 31 December 2021.

### **Representations**

1. We acknowledge as trustees our responsibility for making accurate representations to you and for the accounts which you have prepared on our behalf for the charity.
2. We confirm that all accounting records have been made available to you for the purpose of your independent examination and that all the transactions undertaken by the charity have been properly reflected and recorded in the accounting records. All other records and related information, including minutes of all trustees and members' meetings, have been made available to you.
3. We confirm that, at the balance sheet date, the charity had no liabilities or provisions other than those recognised and no contingent liabilities other than those disclosed in the financial statements.
4. We confirm that there had been no events since the balance sheet date which require disclosure or which would materially affect the amounts in the financial statements, other than those already disclosed or included in the financial statements.
5. We confirm that the charity has not contracted for any capital expenditure other than as disclosed in the financial statements.
6. We confirm that there are no laws or regulations that are central to the charity's ability to carry on its activities.

7. We confirm that, in our opinion, the charity's financial statements should be prepared on the grounds that current and future sources of funding or support will be more than adequate for the charity's needs.
8. We confirm that you were not aware of any transactions with related parties requiring disclosure in the financial statements.
9. We confirm that all grants, donations and other income, including those subject to special terms or conditions or received for restricted purposes, have been notified to you. There have been no breaches of terms or conditions during the period regarding the application of such income.
10. We acknowledge our responsibility for the design and implementation of internal controls to prevent and detect fraud. We confirm that we have disclosed to you the results of our own assessment of the risk of fraud in the charity.
11. We confirm that there have been no actual or suspected instances of fraud involving trustees, management or employees who have a significant role in internal control or that could have a material effect on the financial statements. We also confirm that we are not aware of any allegations or fraud by former trustees, employees, regulators or others.
12. We confirm that we are not aware of any matters of material significance that should be reported to the Charity Commission.

We confirm that the above representations are made on the basis of enquiries of management and staff with relevant knowledge and experience (and, where appropriate, of inspection of supporting documentation) sufficient to satisfy us that we can properly make each of the above representations to you.



Trustee



Treasurer

Date 4 April 2022

Signed on behalf of the board of trustees  
of Chartered Institute of Horticulture

**THE CHARTERED INSTITUTE OF HORTICULTURE**  
**ANNUAL REPORT AND UNAUDITED FINANCIAL STATEMENTS**  
**FOR THE YEAR ENDED 31 DECEMBER 2021**

# **THE CHARTERED INSTITUTE OF HORTICULTURE**

## **STATEMENT OF TRUSTEES' RESPONSIBILITIES**

***FOR THE YEAR ENDED 31 DECEMBER 2021***

---

The trustees are responsible for preparing the Trustees' Report and the financial statements in accordance with applicable law and United Kingdom Accounting Standards (United Kingdom Generally Accepted Accounting Practice).

The law applicable to charities in England and Wales requires the trustees to prepare financial statements for each financial year which give a true and fair view of the state of affairs of the charity and of the incoming resources and application of resources of the charity for that year.

In preparing these financial statements, the trustees are required to:

- select suitable accounting policies and then apply them consistently;
- observe the methods and principles in the Charities SORP;
- make judgements and estimates that are reasonable and prudent;
- state whether applicable accounting standards have been followed, subject to any material departures disclosed and explained in the financial statements; and
- prepare the financial statements on the going concern basis unless it is inappropriate to presume that the charity will continue in operation.

The trustees are responsible for keeping sufficient accounting records that disclose with reasonable accuracy at any time the financial position of the charity and enable them to ensure that the financial statements comply with the Charities Act 2011, the Charity (Accounts and Reports) Regulations 2008 and the provisions of the trust deed. They are also responsible for safeguarding the assets of the charity and hence for taking reasonable steps for the prevention and detection of fraud and other irregularities.

# THE CHARTERED INSTITUTE OF HORTICULTURE

## INDEPENDENT EXAMINER'S REPORT

### TO THE TRUSTEES OF THE CHARTERED INSTITUTE OF HORTICULTURE

---

I report to the trustees on my examination of the financial statements of The Chartered Institute of Horticulture (the charity) for the year ended 31 December 2021.

#### **Responsibilities and basis of report**

As the trustees of the charity you are responsible for the preparation of the financial statements in accordance with the requirements of the Charities Act 2011 (the 2011 Act).

I report in respect of my examination of the charity's financial statements carried out under section 145 of the 2011 Act. In carrying out my examination I have followed all the applicable Directions given by the Charity Commission under section 145(5)(b) of the 2011 Act.

#### **Independent examiner's statement**

Your attention is drawn to the fact that the charity has prepared financial statements in accordance with Accounting and Reporting by Charities preparing their accounts in accordance with the Financial Reporting Standard applicable in the UK and Republic of Ireland (FRS 102) in preference to the Accounting and Reporting by Charities: Statement of Recommended Practice issued on 1 April 2005 which is referred to in the extant regulations but has now been withdrawn.

I understand that this has been done in order for financial statements to provide a true and fair view in accordance with Generally Accepted Accounting Practice effective for reporting periods beginning on or after 1 January 2015.

I have completed my examination. I confirm that no matters have come to my attention in connection with the examination giving me cause to believe that in any material respect:

- 1 accounting records were not kept in respect of the charity as required by section 130 of the 2011 Act; or
- 2 the financial statements do not accord with those records; or
- 3 the financial statements do not comply with the applicable requirements concerning the form and content of accounts set out in the Charities (Accounts and Reports) Regulations 2008 other than any requirement that the accounts give a true and fair view which is not a matter considered as part of an independent examination.

I have no concerns and have come across no other matters in connection with the examination to which attention should be drawn in this report in order to enable a proper understanding of the financial statements to be reached.

**Helen Furlong FCCA**  
**McLintocks (NW) Limited**

46 Hamilton Square  
Birkenhead  
Wirral  
Merseyside  
CH41 5AR

Dated: .....



# THE CHARTERED INSTITUTE OF HORTICULTURE

## STATEMENT OF FINANCIAL ACTIVITIES

FOR THE YEAR ENDED 31 DECEMBER 2021

Current financial year		Unrestricted funds general	Unrestricted funds designated	Restricted funds	Endowment funds	Total	Total
	Notes	2021 £	2021 £	2021 £	2021 £	2021 £	2020 £
<b>Income from:</b>							
Donations and legacies	2	131,711	526	-	-	132,237	250,276
Charitable activities	3	5,026	5,750	20,138	-	30,914	7,479
Investments	4	387	607	-	504	1,498	1,742
<b>Total income and endowments</b>		<b>137,124</b>	<b>6,883</b>	<b>20,138</b>	<b>504</b>	<b>164,649</b>	<b>259,497</b>
<b>Expenditure on:</b>							
Raising funds	5	109	179	-	148	436	392
Charitable activities	6	135,471	5,436	16,409	-	157,316	101,752
<b>Total resources expended</b>		<b>135,580</b>	<b>5,615</b>	<b>16,409</b>	<b>148</b>	<b>157,752</b>	<b>102,144</b>
Net gains/(losses) on investments	10	3,458	5,671	-	4,704	13,833	(4,924)
<b>Net movement in funds</b>		<b>5,002</b>	<b>6,939</b>	<b>3,729</b>	<b>5,060</b>	<b>20,730</b>	<b>152,429</b>
Fund balances at 1 January 2021		269,667	62,718	5,550	35,261	373,196	220,767
<b>Fund balances at 31 December 2021</b>		<b>274,669</b>	<b>69,657</b>	<b>9,279</b>	<b>40,321</b>	<b>393,926</b>	<b>373,196</b>

The statement of financial activities includes all gains and losses recognised in the year.

All income and expenditure derive from continuing activities.

# THE CHARTERED INSTITUTE OF HORTICULTURE

## STATEMENT OF FINANCIAL ACTIVITIES (CONTINUED)

FOR THE YEAR ENDED 31 DECEMBER 2021

Prior financial year

		Unrestricted funds general 2020 £	Unrestricted funds designated 2020 £	Restricted funds 2020 £	Endowment funds 2020 £	Total 2020 £
	Notes					
<b><u>Income from:</u></b>						
Donations and legacies	2	238,410	11,866	-	-	250,276
Charitable activities	3	4,854	2,625	-	-	7,479
Investments	4	611	618	-	513	1,742
<b>Total income and endowments</b>		<b>243,875</b>	<b>15,109</b>	<b>-</b>	<b>513</b>	<b>259,497</b>
<b><u>Expenditure on:</u></b>						
Raising funds	5	122	147	-	123	392
Charitable activities	6	92,329	3,893	5,530	-	101,752
<b>Total resources expended</b>		<b>92,451</b>	<b>4,040</b>	<b>5,530</b>	<b>123</b>	<b>102,144</b>
Net gains/(losses) on investments	10	(1,525)	(1,857)	-	(1,542)	(4,924)
<b>Net movement in funds</b>		<b>149,899</b>	<b>9,212</b>	<b>(5,530)</b>	<b>(1,152)</b>	<b>152,429</b>
Fund balances at 1 January 2020		119,768	53,507	11,079	36,413	220,767
<b>Fund balances at 31 December 2020</b>		<b>269,667</b>	<b>62,719</b>	<b>5,549</b>	<b>35,261</b>	<b>373,196</b>

The statement of financial activities includes all gains and losses recognised in the year.

All income and expenditure derive from continuing activities.

# THE CHARTERED INSTITUTE OF HORTICULTURE

## BALANCE SHEET

AS AT 31 DECEMBER 2021

	Notes	2021 £	£	2020 £	£
<b>Fixed assets</b>					
Tangible assets	11		18,710		17,524
Investments	12		127,934		113,056
			<u>146,644</u>		<u>130,580</u>
<b>Current assets</b>					
Stocks		2,867		3,022	
Debtors	14	14,365		-	
Cash at bank and in hand		237,749		245,989	
		<u>254,981</u>		<u>249,011</u>	
<b>Creditors: amounts falling due within one year</b>	15	(7,699)		(6,395)	
Net current assets			<u>247,282</u>		<u>242,616</u>
<b>Total assets less current liabilities</b>			<u><u>393,926</u></u>		<u><u>373,196</u></u>
<b>Capital funds</b>					
Endowment funds	16		40,321		35,261
<b>Income funds</b>					
Restricted funds	17		9,279		5,549
Unrestricted funds			344,326		332,386
			<u>393,926</u>		<u>373,196</u>

The financial statements were approved by the Trustees on 4 April 2022



.....  
S Nicholas FCIHort President  
**Trustee**



.....  
G Roe FCIHort, Honorary Treasurer  
**Trustee**

# THE CHARTERED INSTITUTE OF HORTICULTURE

## NOTES TO THE FINANCIAL STATEMENTS

### FOR THE YEAR ENDED 31 DECEMBER 2021

---

#### **1 Accounting policies**

##### **1.1 Accounting convention**

The financial statements have been prepared in accordance with the charity's [governing document], the Charities Act 2011 and "Accounting and Reporting by Charities: Statement of Recommended Practice applicable to charities preparing their accounts in accordance with the Financial Reporting Standard applicable in the UK and Republic of Ireland (FRS 102)" (as amended for accounting periods commencing from 1 January 2016). The charity is a Public Benefit Entity as defined by FRS 102.

The charity has taken advantage of the provisions in the SORP for charities applying FRS 102 Update Bulletin 1 not to prepare a Statement of Cash Flows.

The financial statements are prepared in sterling, which is the functional currency of the charity. Monetary amounts in these financial statements are rounded to the nearest £.

The financial statements have been prepared under the historical cost convention, modified to include certain financial instruments at fair value. The principal accounting policies adopted are set out below.

##### **1.2 Going concern**

At the time of approving the financial statements, the trustees have a reasonable expectation that the charity has adequate resources to continue in operational existence for the foreseeable future. Thus the trustees continue to adopt the going concern basis of accounting in preparing the financial statements.

##### **1.3 Charitable funds**

Unrestricted funds are available for use at the discretion of the trustees in furtherance of their charitable objectives.

Designated funds are unrestricted funds set aside for specific purposes at the discretion of the trustees.

Restricted funds are subject to specific conditions by donors as to how they may be used. The purposes and uses of the restricted funds are set out in the notes to the financial statements.

Endowment funds are subject to specific conditions by donors that the capital must be maintained by the charity.

##### **1.4 Incoming resources**

Voluntary income including donations, gifts, legacies and grants that provide core funding or are of a general nature is recognised when the charity entitlement to the income, it is probable that the income will be received and the amount can be measured with sufficient reliability.

###### **Donations and Legacies**

Donations and legacies are recognised on a receivable basis when receipt is probable and the amount can be reliably measured.

###### **Investment income**

Interest on funds held on deposit is included when receivable and the amount can be measured reliably by the charity; this is normally upon notification of the interest paid or payable by the bank. Dividends are recognised once the dividend has been declared and notification has been received of the dividend due.

# THE CHARTERED INSTITUTE OF HORTICULTURE

## NOTES TO THE FINANCIAL STATEMENTS (CONTINUED)

### FOR THE YEAR ENDED 31 DECEMBER 2021

---

#### 1 Accounting policies

##### 1.5 Resources expended

All expenditure is recognised once there is a legal or constructive obligation to that expenditure, it is probable settlement is required and the amount can be measured reliably. All costs are allocated to the applicable expenditure heading that aggregate similar costs to that category. Where costs cannot be directly attributed to particular headings they have been allocated on a basis consistent with the use of resources, with central staff costs allocated on the basis of time spent, and depreciation charges allocated on the portion of the asset's use. Other support costs are allocated based on the spread of staff costs.

##### Raising funds

These are costs incurred in attracting voluntary income, the management of investments and those incurred in trading activities that raise funds.

##### Charitable activities

Charitable expenditure comprises those costs incurred by the charity in the delivery of its activities and services for its beneficiaries. It includes both costs that can be allocated directly to such activities and those costs of an indirect nature necessary to support them.

##### Governance costs

These include the costs attributable to the charity's compliance with constitutional and statutory requirements, including audit, strategic management and trustees's meetings and reimbursed expenses.

##### 1.6 Tangible fixed assets

Tangible fixed assets are initially measured at cost and subsequently measured at cost or valuation, net of depreciation and any impairment losses.

Depreciation is recognised so as to write off the cost or valuation of assets less their residual values over their useful lives on the following bases:

Fixtures and fittings	33% on cost & 10% reducing balance
-----------------------	------------------------------------

The gain or loss arising on the disposal of an asset is determined as the difference between the sale proceeds and the carrying value of the asset, and is recognised in net income/(expenditure) for the year.

Individual fixed assets costing £100 or more are initially recorded at cost.

##### 1.7 Fixed asset investments

Fixed asset investments, other than programme related investments, are included at market value at the balance sheet date. Realised gains and losses on investments are calculated as the difference between sales proceeds and their market value at the start of the year, or their subsequent cost, and are charged or credited to the Statement of Financial Activities in the period of disposal.

Unrealised gains and losses represent the movement in market values during the year and are credited or charged to the Statement of Financial Activities based on the market value at the year end.

##### 1.8 Impairment of fixed assets

At each reporting end date, the charity reviews the carrying amounts of its tangible assets to determine whether there is any indication that those assets have suffered an impairment loss. If any such indication exists, the recoverable amount of the asset is estimated in order to determine the extent of the impairment loss (if any).

# THE CHARTERED INSTITUTE OF HORTICULTURE

## NOTES TO THE FINANCIAL STATEMENTS (CONTINUED)

### FOR THE YEAR ENDED 31 DECEMBER 2021

---

#### 1 Accounting policies

##### 1.9 Stocks

Stocks are stated at the lower of cost and estimated selling price less costs to complete and sell. Cost comprises direct materials and, where applicable, direct labour costs and those overheads that have been incurred in bringing the stocks to their present location and condition. Items held for distribution at no or nominal consideration are measured the lower of replacement cost and cost.

Net realisable value is the estimated selling price less all estimated costs of completion and costs to be incurred in marketing, selling and distribution.

##### 1.10 Cash and cash equivalents

Cash and cash equivalents include cash in hand, deposits held at call with banks, other short-term liquid investments with original maturities of three months or less, and bank overdrafts. Bank overdrafts are shown within borrowings in current liabilities.

##### 1.11 Financial instruments

The charity has elected to apply the provisions of Section 11 'Basic Financial Instruments' and Section 12 'Other Financial Instruments Issues' of FRS 102 to all of its financial instruments.

Financial instruments are recognised in the charity's balance sheet when the charity becomes party to the contractual provisions of the instrument.

Financial assets and liabilities are offset, with the net amounts presented in the financial statements, when there is a legally enforceable right to set off the recognised amounts and there is an intention to settle on a net basis or to realise the asset and settle the liability simultaneously.

##### **Basic financial assets**

Basic financial assets, which include debtors and cash and bank balances, are initially measured at transaction price including transaction costs and are subsequently carried at amortised cost using the effective interest method unless the arrangement constitutes a financing transaction, where the transaction is measured at the present value of the future receipts discounted at a market rate of interest. Financial assets classified as receivable within one year are not amortised.

##### **Basic financial liabilities**

Basic financial liabilities, including creditors and bank loans are initially recognised at transaction price unless the arrangement constitutes a financing transaction, where the debt instrument is measured at the present value of the future payments discounted at a market rate of interest. Financial liabilities classified as payable within one year are not amortised.

Debt instruments are subsequently carried at amortised cost, using the effective interest rate method.

Trade creditors are obligations to pay for goods or services that have been acquired in the ordinary course of operations from suppliers. Amounts payable are classified as current liabilities if payment is due within one year or less. If not, they are presented as non-current liabilities. Trade creditors are recognised initially at transaction price and subsequently measured at amortised cost using the effective interest method.

##### 1.12 Employee benefits

The cost of any unused holiday entitlement is recognised in the period in which the employee's services are received.

Termination benefits are recognised immediately as an expense when the charity is demonstrably committed to terminate the employment of an employee or to provide termination benefits.



# THE CHARTERED INSTITUTE OF HORTICULTURE

## NOTES TO THE FINANCIAL STATEMENTS (CONTINUED)

FOR THE YEAR ENDED 31 DECEMBER 2021

### 1 Accounting policies

#### 1.13 Retirement benefits

Payments to defined contribution retirement benefit schemes are charged as an expense as they fall due.

### 2 Donations and legacies

	Unrestricted funds general 2021 £	Unrestricted funds designated 2021 £	Total 2021 £	Unrestricted funds general 2020 £	Unrestricted funds designated 2020 £	Total 2020 £
Regular giving and capital donations	131,711	-	131,711	123,524	-	123,524
Legacies receivable	-	-	-	114,886	-	114,886
Donations from individuals	-	526	526	-	11,866	11,866
	<u>131,711</u>	<u>526</u>	<u>132,237</u>	<u>238,410</u>	<u>11,866</u>	<u>250,276</u>

**THE CHARTERED INSTITUTE OF HORTICULTURE**  
**NOTES TO THE FINANCIAL STATEMENTS (CONTINUED)**  
**FOR THE YEAR ENDED 31 DECEMBER 2021**

**3 Charitable activities**

	Membership services	Awards and scholarships
	2021	2021
	£	£
Income from charitable activities	5,026	25,888
Analysis by fund		
Unrestricted funds - general	5,026	-
Unrestricted funds - designated	-	5,750
Restricted funds	-	20,138
	5,026	25,888

**For the year ended 31 December 2020**

	Membership services	Awards and scholarships
	£	£
Income from charitable activities	4,854	2,625
Analysis by fund		
Unrestricted funds - general	4,854	-
Unrestricted funds - designated	-	2,625
Restricted funds	-	-
	5,040	34,698

# THE CHARTERED INSTITUTE OF HORTICULTURE

## NOTES TO THE FINANCIAL STATEMENTS (CONTINUED)

FOR THE YEAR ENDED 31 DECEMBER 2021

### 4 Investments

	Unrestricted funds general 2021 £	Unrestricted funds designated 2021 £	Endowment funds 2021 £	Total 2021 £
Income from listed investments	370	607	504	1,481
Interest receivable	17	-	-	17
	<u>387</u>	<u>607</u>	<u>504</u>	<u>1,498</u>
<b>For the year ended 31 December 2020</b>	<b>£</b>	<b>£</b>	<b>£</b>	<b>£</b>
Income from listed investments	508	618	513	1,639
Interest receivable	103	-	-	103
	<u>611</u>	<u>618</u>	<u>513</u>	<u>1,742</u>

### 5 Raising funds

	Unrestricted funds general 2021 £	Unrestricted funds designated 2021 £	Endowment funds 2021 £	Total 2021 £
Investment management	109	179	148	436
<b>For the year ended 31 December 2020</b>	<b>£</b>	<b>£</b>	<b>£</b>	<b>£</b>
Investment management	122	147	123	392

# THE CHARTERED INSTITUTE OF HORTICULTURE

## NOTES TO THE FINANCIAL STATEMENTS (CONTINUED)

### FOR THE YEAR ENDED 31 DECEMBER 2021

#### 6 Charitable activities

	Info provision & education	Membership services	Awards and scholarships	Young Horticulturist of the Year	Total 2021
	2021 £	2021 £	2021 £	2021 £	£
Depreciation and impairment	11,615	-	-	-	11,615
AGM & Conference costs	68	-	-	-	68
Project costs	-	-	-	21,156	21,156
Insurance	1,086	-	-	-	1,086
Postage, telephone & internet	500	58	-	-	558
Sundry expenses	1,916	-	-	-	1,916
Travel & meeting expenses	4,718	342	-	-	5,060
Shows & Publicity	274	-	-	-	274
The Horticulturist	16,445	-	-	-	16,445
Website maintenance	3,550	-	-	-	3,550
Bank charges	-	751	-	-	751
Donations	-	204	-	-	204
	<u>40,172</u>	<u>1,355</u>	<u>-</u>	<u>21,156</u>	<u>62,683</u>
Share of support costs (see note 7)	38,165	18,174	22,718	11,811	90,868
Share of governance costs (see note 7)	3,765	-	-	-	3,765
	<u>82,102</u>	<u>19,529</u>	<u>22,718</u>	<u>32,967</u>	<u>157,316</u>
<b>Analysis by fund</b>					
Unrestricted funds - general	82,102	18,840	22,718	11,811	135,471
Unrestricted funds - designated	-	689	-	4,747	5,436
Restricted funds	-	-	-	16,409	16,409
	<u>82,102</u>	<u>19,529</u>	<u>22,718</u>	<u>32,967</u>	<u>157,316</u>

**THE CHARTERED INSTITUTE OF HORTICULTURE**

**NOTES TO THE FINANCIAL STATEMENTS (CONTINUED)**

**FOR THE YEAR ENDED 31 DECEMBER 2021**

**6 Charitable activities**

For the year ended 31 December 2020

	Info provision & education	Membership services	Awards and scholarships	Young Horticulturist of the Year	Total 2020
	£	£	£	£	£
Depreciation and impairment	10,055	-	-	-	10,055
AGM & Conference costs	1,568	-	-	-	1,568
Project costs	-	-	-	8,820	8,820
Insurance	861	-	-	-	861
Postage, telephone & internet	-	12	-	-	12
Corporate memberships	-	1,121	-	-	1,121
Sundry expenses	192	-	-	-	192
Travel & meeting expenses	1,224	392	-	-	1,616
Shows & Publicity	6	-	-	-	6
The Horticulturist	18,016	-	-	-	18,016
Website maintenance	3,496	-	-	-	3,496
Bank charges	-	1,476	-	-	1,476
Donations	-	280	-	-	280
	<u>35,418</u>	<u>3,281</u>	<u>-</u>	<u>8,820</u>	<u>47,519</u>
Share of support costs (see note 7)	21,195	10,093	12,616	6,560	50,464
Share of governance costs (see note 7)	<u>3,769</u>	<u>-</u>	<u>-</u>	<u>-</u>	<u>3,769</u>
	<u>60,382</u>	<u>13,374</u>	<u>12,616</u>	<u>15,380</u>	<u>101,752</u>
<b>Analysis by fund</b>					
Unrestricted funds - general	60,382	12,771	12,616	6,560	92,329
Unrestricted funds - designated	-	603	-	3,290	3,893
Restricted funds	<u>-</u>	<u>-</u>	<u>-</u>	<u>5,530</u>	<u>5,530</u>
	<u>60,382</u>	<u>13,374</u>	<u>12,616</u>	<u>15,380</u>	<u>101,752</u>

# THE CHARTERED INSTITUTE OF HORTICULTURE

## NOTES TO THE FINANCIAL STATEMENTS (CONTINUED)

FOR THE YEAR ENDED 31 DECEMBER 2021

### 7 Support costs

	Support costs £	Governance costs £	2021 Support costs £	Governance costs £	2020 £
Staff costs	31,328	-	31,328	-	-
Printing, postage, stationery & Other expenses	7,981	-	7,981	1,466	1,466
Secretariat costs	50,575	-	50,575	48,998	48,998
Development Officer expenses	984	-	984	-	-
Independent examiners fees	-	3,000	3,000	-	3,000
Professional indemnity insurance	-	765	765	-	769
	<u>90,868</u>	<u>3,765</u>	<u>94,633</u>	<u>50,464</u>	<u>54,233</u>
Analysed between Charitable activities	<u>90,868</u>	<u>3,765</u>	<u>94,633</u>	<u>50,464</u>	<u>54,233</u>

### 8 Trustees

None of the trustees (or any persons connected with them) received any remuneration during the year, but 6 of the trustees were reimbursed a total of £6,740 travelling expenses (2020- 5 were reimbursed £1,224).

### 9 Employees

#### Number of employees

The average monthly number of employees during the year was:

	2021 Number	2020 Number
Support Development Officer	<u>1</u>	<u>-</u>

#### Employment costs

	2021 £	2020 £
Wages and salaries	30,413	-
Other pension costs	915	-
	<u>31,328</u>	<u>-</u>

There were no employees whose annual remuneration was £60,000 or more.



**THE CHARTERED INSTITUTE OF HORTICULTURE**  
**NOTES TO THE FINANCIAL STATEMENTS (CONTINUED)**  
**FOR THE YEAR ENDED 31 DECEMBER 2021**

**10 Net gains/(losses) on investments**

	Unrestricted funds general 2021 £	Unrestricted funds designated 2021 £	Endowment funds 2021 £	Total 2021 £
Revaluation of investments	3,458	5,671	4,704	13,833
<b>For the year ended 31 December 2020</b>	<b>£</b>	<b>£</b>	<b>£</b>	<b>£</b>
Revaluation of investments	(1,525)	(1,857)	(1,542)	(4,924)

**11 Tangible fixed assets**

	Fixtures and fittings £
<b>Cost</b>	
At 1 January 2021	60,022
Additions	12,801
At 31 December 2021	72,823
<b>Depreciation and impairment</b>	
At 1 January 2021	42,498
Depreciation charged in the year	11,615
At 31 December 2021	54,113
<b>Carrying amount</b>	
At 31 December 2021	18,710
At 31 December 2020	17,524

**THE CHARTERED INSTITUTE OF HORTICULTURE**  
**NOTES TO THE FINANCIAL STATEMENTS (CONTINUED)**  
**FOR THE YEAR ENDED 31 DECEMBER 2021**

**12 Fixed asset investments**

	<b>Listed investments £</b>
<b>Cost or valuation</b>	
At 1 January 2021	113,056
Additions	1,481
Valuation changes	13,833
Disposals	(436)
	<hr/>
At 31 December 2021	127,934
	<hr/>
<b>Carrying amount</b>	
At 31 December 2021	127,934
	<hr/>
At 31 December 2020	113,056
	<hr/>

<b>13 Financial instruments</b>	<b>2021 £</b>	<b>2020 £</b>
<b>Carrying amount of financial assets</b>		
Instruments measured at fair value through profit or loss	127,934	113,056
	<hr/>	<hr/>

<b>14 Debtors</b>	<b>2021 £</b>	<b>2020 £</b>
<b>Amounts falling due within one year:</b>		
Prepayments and accrued income	14,365	-
	<hr/>	<hr/>

<b>15 Creditors: amounts falling due within one year</b>	<b>2021 £</b>	<b>2020 £</b>
Other taxation and social security	605	-
Trade creditors	3,890	3,395
Other creditors	204	-
Accruals and deferred income	3,000	3,000
	<hr/>	<hr/>
	7,699	6,395
	<hr/>	<hr/>

# THE CHARTERED INSTITUTE OF HORTICULTURE

## NOTES TO THE FINANCIAL STATEMENTS (CONTINUED)

### FOR THE YEAR ENDED 31 DECEMBER 2021

#### 16 Endowment funds

Endowment funds represent assets which must be held permanently by the charity. Income arising on the endowment funds can be used in accordance with the objects of the charity and is included as unrestricted income. Any capital gains or losses arising on the assets form part of the fund.

	Movement in funds					
	Balance at 1 January 2021	Incoming resources	Resources expended	Transfers	Revaluations gains and losses	Balance at 31 December 2021
	£	£	£	£	£	£
<b>Permanent endowments</b>						
Aberconway Fund	32,158	460	(135)	-	4,288	36,771
James Bruce Fund	3,103	45	(13)	-	415	3,550
	<u>35,261</u>	<u>505</u>	<u>(148)</u>	<u>-</u>	<u>4,703</u>	<u>40,321</u>

#### Prior financial year

	Movement in funds					
	Balance at 1 January 2020	Incoming resources	Resources expended	Transfers	Revaluations gains and losses	Balance at 31 December 2020
	£	£	£	£	£	£
<b>Permanent endowments</b>						
Aberconway Fund	33,210	469	(112)	-	(1,409)	32,158
James Bruce Fund	3,203	44	(11)	-	(133)	3,103
	<u>36,413</u>	<u>513</u>	<u>(123)</u>	<u>-</u>	<u>(1,542)</u>	<u>35,261</u>

# THE CHARTERED INSTITUTE OF HORTICULTURE

## NOTES TO THE FINANCIAL STATEMENTS (CONTINUED)

### FOR THE YEAR ENDED 31 DECEMBER 2021

#### 17 Restricted funds

The income funds of the charity include restricted funds comprising the following unexpended balances of donations and grants held on trust for specific purposes:

	Movement in funds		
	Balance at 1 January 2021	Incoming resources	Resources expended
	£	£	£
Young Horticulturist of the Year	5,550	20,138	(16,409)
	<u>5,550</u>	<u>20,138</u>	<u>(16,409)</u>

	Movement in funds		
	Balance at 1 January 2020	Incoming resources	Resources expended
	£	£	£
Young Horticulturist of the Year	11,079		(5,530)
GROW	-	-	-
	<u>11,079</u>	<u>-</u>	<u>(5,530)</u>

**THE CHARTERED INSTITUTE OF HORTICULTURE**  
**NOTES TO THE FINANCIAL STATEMENTS (CONTINUED)**  
**FOR THE YEAR ENDED 31 DECEMBER 2021**

**18 Unrestricted funds - designated**

These are unrestricted funds which are material to the charity's activities made up as follows:

	<b>Movement in funds</b>			
	<b>Balance at 1 January 2021</b>	<b>Incoming resources</b>	<b>Resources expended</b>	<b>Revaluations, gains and losses</b>
	<b>£</b>	<b>£</b>	<b>£</b>	<b>£</b>
Norah Stucken fund	42,017	607	(179)	5,671
Branch fund	20,701	6,278	(5,438)	-
	<u>62,718</u>	<u>6,885</u>	<u>(5,617)</u>	<u>5,671</u>
	<u>62,718</u>	<u>6,885</u>	<u>(5,617)</u>	<u>5,671</u>

**Prior financial year**

	<b>Movement in funds</b>			
	<b>Balance at 1 January 2021</b>	<b>Incoming resources</b>	<b>Resources expended</b>	<b>Revaluations, gains and losses</b>
	<b>£</b>	<b>£</b>	<b>£</b>	<b>£</b>
Norah Stucken fund	45,868	618	(147)	(1,857)
Branch fund	8,528	14,491	(3,893)	-
	<u>53,507</u>	<u>15,109</u>	<u>(4,040)</u>	<u>(1,857)</u>
	<u>53,507</u>	<u>15,109</u>	<u>(4,040)</u>	<u>(1,857)</u>

**19 Analysis of net assets between funds**

	<b>General 2021</b>	<b>Designated 2021</b>	<b>Restricted 2021</b>	<b>Permanent 2021</b>	<b>Total 2021</b>
	<b>£</b>	<b>£</b>	<b>£</b>	<b>£</b>	<b>£</b>
Tangible assets	18,710	-	-	-	18,710
Investments	31,984	52,453	-	43,497	127,934
Current assets/(liabilities)	223,975	17,204	9,279	(3,176)	247,282
	<u>274,669</u>	<u>69,657</u>	<u>9,279</u>	<u>40,321</u>	<u>393,926</u>
	<u>274,669</u>	<u>69,657</u>	<u>9,279</u>	<u>40,321</u>	<u>393,926</u>

	<b>General 2020</b>	<b>Designated 2020</b>	<b>Restricted 2020</b>	<b>Permanent 2020</b>	<b>Total 2020</b>
	<b>£</b>	<b>£</b>	<b>£</b>	<b>£</b>	<b>£</b>
Tangible assets	17,524	-	-	-	17,524
Investments	35,047	42,622	-	35,387	113,056
Current assets/(liabilities)	217,096	20,097	5,549	(126)	242,616
	<u>269,667</u>	<u>62,719</u>	<u>5,549</u>	<u>35,261</u>	<u>373,196</u>
	<u>269,667</u>	<u>62,719</u>	<u>5,549</u>	<u>35,261</u>	<u>373,196</u>

**THE CHARTERED INSTITUTE OF HORTICULTURE**  
**NOTES TO THE FINANCIAL STATEMENTS (CONTINUED)**  
***FOR THE YEAR ENDED 31 DECEMBER 2021***

---

**20 Related party transactions**

There were no disclosable related party transactions during the year (2020 - none).