

POLDEN GOSPEL HALL TRUST
Report of the Trustees and
Unaudited Financial Statements
For the Year Ended 5th April 2023

POLDEN GOSPEL HALL TRUST
YEAR ENDED 5TH APRIL 2023

CONTENTS

| | Pages |
|--------------------------------------|--------|
| Reference and administrative details | 1 |
| Report of the Trustees | 2 - 5 |
| Independent Examiner's Report | 6 |
| Statement of Financial Activities | 7 |
| Balance Sheet | 8 |
| Notes to the Financial Statements | 9 - 12 |

POLDEN GOSPEL HALL TRUST
REFERENCE AND ADMINISTRATIVE DETAILS FOR THE YEAR ENDED 5TH APRIL 2023

CHARITY NAME

Polden Gospel Hall Trust

REGISTERED CHARITY NUMBER

1159120

TRUSTEES

Mr. Jonathan R. Taylor (Chair)
Mr. Marcus B.R. Mitchell
Mr. Oliver T. Martin
Mr. Thomas E. Martin (resigned 4th March 2023)
Mr. Grant Mitchell
Mr. David W. Tallamy (appointed 4th March 2023)

TREASURER

Mr. Thomas E. Martin (resigned 4th March 2023)
Mr. David W. Tallamy (appointed 4th March 2023)

PRINCIPAL ADDRESS

C/O Mr. David W. Tallamy,
63 Whitmore Road,
Taunton,
Somerset,
TA2 6EA.

**ACCOUNTANT AND INDEPENDENT
EXAMINER**

Keith F. Pavey,
Broadoak Accounting Services,
6 The Oaks,
Wembdon Rise,
Bridgwater,
Somerset,
TA6 7QL.

BANKERS

National Westminster Bank P.l.c.,
89 High Street,
Worle,
Weston-super-Mare,
BS23 1JW.

POLDEN GOSPEL HALL TRUST
REPORT OF THE TRUSTEES FOR THE YEAR ENDED 5TH APRIL 2023

The Trustees present their Report along with the Financial Statements of the Charity for the Year Ended 5th April 2023. The Financial Statements have been prepared in accordance with the accounting policies set out on pages 9 - 10 and comply with the Trust Deed and applicable law.

Structure, Governance and Management

Governing Document

The Charity is controlled by a Deed of Trust, and constitutes an Unincorporated Charity.

Polden Gospel Hall Trust is constituted by a Deed of Trust dated 30th June 1982, subsequent amending Deeds, and most recently by a Deed of Variation dated 12th August 2014. The Trust was registered with the Charity Commission for England and Wales on 7th November 2014 under Charity Registration Number: 1159120.

Recruitment and Appointment of New Trustees

The Trustees who have served during the year and since the year end are set out on page 1. None of the Trustees, nor any person connected with them, received any remuneration or expenses from the Charity in the Year, nor in the preceding financial year.

The Trust operates a Gospel Hall and Trustees are chosen from among the regular congregation of the hall. New Trustees are nominated by the existing Trustees or by the congregation and must be appointed by unanimous resolution of the congregation. They are selected according to their skills and experience and are expected to use both in furthering the objects of the Charity. Checks are made to ensure the Trustees' eligibility to act and incoming Trustees are made aware of their responsibilities by the existing Trustees, who ensure that new Trustees read the Trust Deed and relevant Charity Commission guidance.

Wider Network

The Trustees maintain informal links with Trustees of similar Charities with a view to pooling experience considered useful in pursuing the objects of the Charity. The Charity also maintains particular links with the Taunton Vale Gospel Hall Trust, with which it shares members of its congregation.

Risk Management

The Trustees have identified and reviewed the major risks to which the charity is exposed and confirm that they have established systems or procedures to manage and mitigate those risks.

Objectives and activities

Objectives and aims

The charitable purposes of the Charity are the advancement of the Christian religion for the public benefit, including by the carrying on of the service of God in accordance with the Old and New Testaments of the Holy Bible as followed by those Christians forming part of the world-wide fellowship known as the Plymouth Brethren Christian Church (the "Brethren") and any other charitable purposes connected with Brethren. The core doctrine of the Brethren and proper practices in furtherance of certain aspects of doctrine are summarised in two schedules to the Trust Deed.

Public benefit

The Trustees confirm that they have complied with their duty under section 4 of the Charities Act 2011 to have due regard to the Charity Commission's general guidance to charities on public benefit. Details of public benefit activities carried out by this Trust can be found in the separate appendix to this report.

POLDEN GOSPEL HALL TRUST
REPORT OF THE TRUSTEES FOR THE YEAR ENDED 5TH APRIL 2023 (CONTINUED)

Main Activities and achievements

The Trust provides and maintains a Gospel Hall where religious meetings are held by the local Brethren community. Details of the origins, teachings and way of life of the Brethren can be found on their website - www.plymouthbrethrenchristianchurch.org and in the schedules to the Trust Deed.

The Trust's main achievements this year have been to maintain the Gospel Hall for the continuing use of the congregation and visitors. It has also encouraged works by the congregation, as described below. In addition funds have been utilised to assist the Taunton Vale Gospel Hall Trust, referred to on page 2, to acquire a potential site for a Gospel Hall, subject to planning permission.

The Trustees had also established an Emergency Needs fund for the duration of the coronavirus pandemic and any resultant economic downturn. This provided limited financial assistance by the way of grocery vouchers to households, who have experienced a recent and significant decrease in income due to the pandemic, such that it was likely to impact on the health and/or welfare of members of the household. The trust had appointed a Local Welfare Panel to manage the application process and to administer the vouchers to qualifying applicants. During the year the fund was discontinued as its purpose was considered fulfilled.

Meetings

Meetings normally held at the Gospel hall include the Lord's Supper (Communion), Gospel preachings, Bible readings and Bible addresses. There is a structured weekly schedule of meetings and, depending on the particular meeting, between 30 and 250 people normally attend these occasions.

The meetings are attended by the regular congregation and most are open to other properly disposed visitors. The notice board outside the Hall welcomes visitors and displays times of Gospel preachings, along with a telephone number for those seeking further information or help. Gospel tracts, which are distributed by street preachers, also display this information.

Bibles and an extensive range of other Christian reading material are on display at the hall and visitors are free to help themselves.

With the easing of the previous Coronavirus restrictions, the use of the Gospel Hall was largely resumed, subject to ongoing care as to the necessary safety considerations.

Spreading the Gospel message and the life of a Christian

The Gospel Hall is a base from which the regular congregation and others who attend the meetings are encouraged to spread the Christian Gospel, in word and deed.

Members of the congregation normally participate in a programme of street preaching and Gospel tracts are provided free of charge by the Charity to such preachers and to be handed out to interested members of the public. Such preachings previously took place most weeks, but have been of necessity curtailed due to the pandemic. Conditions permitted resumption during this year.

In addition, members of the congregation have made a donation of food boxes to local organisations for the homeless to a value of £674 in the year. In addition, Members of the congregation supported a separate charity, the Rapid Relief Team, through which Christmas food boxes were donated to Woolavington School for families in need; a meal was provided for an Arc inspired Big Sleep Out and support given to an Avon and Somerset Police event with food donated. A full Public Benefit Report with further detail is attached.

In carrying out this work, the congregation considers itself to be living out its faith in practice, as particularly exemplified in the following extract from the schedule to the Trust Deed on living a Christian Life:-

1. We seek and are encouraged to live exemplary lives in all our relationships with others in the wider community (including former Brethren), in accordance with the teachings of Holy Scripture (1 Tim 2:2)

POLDEN GOSPEL HALL TRUST
REPORT OF THE TRUSTEES FOR THE YEAR ENDED 5TH APRIL 2023 (CONTINUED)

Spreading the Gospel message and the life of a Christian (Continued)

2. We regularly go out from our homes to preach on the streets, to distribute Christian literature and engage with the wider community (including former Brethren) in order to present eternal salvation, available to all men by faith in Jesus Christ. (2 Tim 4:2).
3. We seek as members of the public to lead Christian lives as husbands and wives, parents, children, employers, employees and neighbours. (Col 3:22-25, Col 4:1).
4. The preservation and protection of the family unit is fundamental and children are prized as a blessing from God. (Psalm 127:3-5). The elderly are valued members of the community, for whom both their family and the wider community are expected to care.
5. Holy Scripture commands us to be good neighbours to others, and deal with all other people (including former Brethren) openly, honestly and fairly and consistent with these principles, we should give our time, talents and money to assist those in need in the wider community, in so far as reasonable given our abilities and our available resources. (Matt 7:12, Matt 22:39, Eph 4:28).

Volunteers

Polden Gospel Hall Trust relies on volunteers to carry out the management, administration and, where appropriate, general maintenance work. The Trust has no paid staff or paid Trustees.

Funding

Funding is sought through gifts and donations from the congregation. Grants are sometimes received from other charitable trusts with complementary objectives. Gift aid is also claimed on relevant gifts.

Financial review

Financial position

In the Year ended 5th April 2023, the Trust had a deficit amounting to £68,673 of Incoming Resources against Resources Expended on General Fund, after Depreciation charged of £16,072, and after assistance to Taunton Vale Gospel Hall Trust of £94,312, including that referred to on page 3. There was also a surplus on Designated Fund of £616, clearing the deficit brought forward, after which that Fund has been discontinued. Total voluntary Income received this Year was £93,976 compared to £72,239 in the Year to 5th April 2022. Monies held on Bank Accounts at the year end totalled £167,208.

All Funds held were Unrestricted Funds.

Reserves policy

The Trustees have considered the level of reserves they wish to retain, appropriate to the charity's needs. This is based on the charity's size and the level of financial commitments. The Trustees have a programme of raising further funds by way of donations and collections, and if necessary loans, in order to fund intended projects, including future plans as referred to below. The congregation is kept regularly informed of needs accordingly.

Free reserves at the year end were £179,531.

Plans for Future Periods

The Trust plans to continue all current activities, and expend public benefit activities as conditions permit.

It is committed to assisting the Taunton Gospel Hall Trust, which has parallel objectivities, with funds towards a further Gospel Hall to be owned by that Trust, and for which a potential site has been found, subject to planning permission. It would be aimed to raise in due course a further £200,000 approximately for that purpose.

Despite the increased cost of energy and other overheads, the Trustees believe that such increased costs are not sufficiently impacting on the ability of the charity to continue as a going concern.

POLDEN GOSPEL HALL TRUST
REPORT OF THE TRUSTEES FOR THE YEAR ENDED 5TH APRIL 2023 (CONTINUED)

Statement of Trustees' Responsibilities

The Trustees are responsible for preparing the Trustees' Annual Report and the Financial Statements in accordance with applicable law and United Kingdom Accounting Standards (United Kingdom Generally Accepted Accounting Practice).

The law applicable to charities in England and Wales, requires the trustees to prepare financial statements for each financial year which give a true and fair view of the state of affairs of the Charity and of the incoming resources and application of resources, of the charity for that period. In preparing these Financial Statements, the trustees are required to

- select suitable accounting policies and then apply them consistently;
- observe the methods and principles in the Charity SORP;
- make judgements and estimates that are reasonable and prudent;
- prepare the Financial Statements on the going concern basis unless it is inappropriate to presume that the Charity will continue in business.

The Trustees are responsible for keeping proper accounting records that disclose with reasonable accuracy at any time the financial position of the charity and enable them to ensure that the financial statements comply with the Charities Act 2011, the Charities (Accounts and Reports) Regulations 2008 and the provisions of the Trust Deed. They are also responsible for safeguarding the assets of the charity and hence for taking reasonable steps for the prevention and detection of fraud and other irregularities. All transactions have been reviewed and approved by two trustees.

On behalf of the board:

Trustee

Date:

POLDEN GOSPEL HALL TRUST
THE INDEPENDENT EXAMINER'S REPORT TO THE TRUSTEES
FOR THE YEAR ENDED 5TH APRIL 2023

I report to the Trustees on my examination of the accounts of Polden Gospel Hall Trust for the year ended 5th April 2023, which are set out on pages 7 to 12, and on the Trustees' Report for the year comprising Pages 2 to 5.

RESPECTIVE RESPONSIBILITIES OF TRUSTEES AND EXAMINER

The Charity's Trustees are responsible for the preparation of the accounts in accordance with the requirements of the Charities Act 2011 ('the Act').

I report in respect of my examination of the Trust's accounts carried out under section 145 of the 2011 Act and in carrying out my examination I have followed all the applicable Directions given by the Charity Commission under section 145(5)(b) of the Act.

BASIS OF THE INDEPENDENT EXAMINER'S REPORT

My examination was carried out in accordance with the General Directions given by the Charity Commission. An examination includes a review of the accounting records kept by the charity and a comparison of the accounts presented with those records. It also includes consideration of any unusual items or disclosures in the accounts, and seeking explanations from you as Trustees concerning any such matters. The procedures undertaken do not provide all the evidence that would be required in an audit and consequently no opinion is given as to whether the accounts present a 'true and fair view' and the report is limited to those matters set out in the statements below.

INDEPENDENT EXAMINER'S STATEMENT

I have completed my examination. I confirm that no material matters have come to my attention in connection with the examination giving me cause to believe that in any material respect:

- 1) Accounting records were not kept in respect of the Trust as required by section 130 of the Act; or
- 2) The accounts do not accord with those records; or
- 3) The accounts do not comply with the applicable requirements concerning the form and content of accounts set out in the Charities (Accounts and Reports) Regulations 2008 other than any requirement that the accounts give a 'true and fair view' which is not a matter considered at part of an independent examination.

I have no concerns and have come across no other matters in connection with the examination to which attention should be drawn in this report in order to enable a proper understanding of the accounts to be reached.



Keith F. Pavey,
 Broadoak Accounting Services,
 6 The Oaks,
 Wembdon Rise,
 Bridgwater,
 Somerset, TA6 7QL.

Date:..... 14TH AUGUST 2023

POLDEN GOSPEL HALL TRUST
STATEMENT OF FINANCIAL ACTIVITIES FOR THE YEAR ENDED 5TH APRIL 2023

| ALL ITEMS RELATE TO UNRESTRICTED FUNDS | Year to 05.04.2023 | | | Year to 05.04.2022 |
|---|---------------------------|------------------------|-----------------|---------------------------|
| | General Fund | Designated Fund | Total | Total |
| | £ | £ | £ | £ |
| INCOME FROM | | | | |
| Donations and Collections (Excl. Gift-Aided) | 8,370 | 0 | 8,370 | 5,650 |
| Contributions from the Congregation | 42,516 | 591 | 43,107 | 42,514 |
| Gift-Aid Donations | 31,599 | 0 | 31,599 | 19,260 |
| Tax Refunds on Gift-Aid | 7,900 | 0 | 7,900 | 4,815 |
| Other Income | 500 | 2,500 | 3,000 | 0 |
| Interest Received | 754 | 0 | 754 | 644 |
| TOTAL INCOMING RESOURCES | 91,639 | 3,091 | 94,730 | 72,883 |
| RESOURCES EXPENDED | | | | |
| MEETING HALL RUNNING COSTS | | | | |
| Water and Sewerage | 197 | | 197 | 289 |
| Light and Heat | 6,983 | | 6,983 | 5,811 |
| Repairs, Maintenance and Cleaning | 15,982 | | 15,982 | 4,395 |
| Maintenance of Grounds | 2,472 | | 2,472 | 2,506 |
| Equipment Hire | 0 | | 0 | 229 |
| Telephone and Computer Costs | 710 | | 710 | 876 |
| Insurance | 1,984 | | 1,984 | 1,659 |
| Health and Safety | 418 | | 418 | 406 |
| Professional Costs | 581 | | 581 | 35 |
| Sundry | 224 | | 224 | 0 |
| Depreciation | 16,072 | | 16,072 | 14,007 |
| | 45,623 | 0 | 45,623 | 30,213 |
| OTHER CHARITABLE ACTIVITIES | | | | |
| Congregation Covid test Kits | 7,918 | | 7,918 | 0 |
| Congregation Support | 0 | 2,475 | 2,475 | 8,700 |
| Donated Services | 94,312 | | 94,312 | 11,181 |
| Conference Hosting Costs | 5,517 | | 5,517 | 0 |
| Other Donations and Costs | 3,072 | | 3,072 | 633 |
| GOVERNANCE COSTS | | | | |
| Professional Support | 2,935 | | 2,935 | 1,830 |
| Accountancy and Independent Examiner | 935 | | 935 | 895 |
| TOTAL RESOURCES EXPENDED | 160,312 | 2,475 | 162,787 | 53,452 |
| NET SURPLUS(DEFICIT) FOR THE YEAR | (68,673) | 616 | (68,057) | 19,431 |
| TOTAL FUNDS BROUGHT FORWARD | 967,413 | (616) | 966,797 | 947,366 |
| TOTAL FUNDS CARRIED FORWARD | 898,740 | 0 | 898,740 | 966,797 |

The notes on pages 9 to 12 form a part of these Financial Statements. All of the above activities are classed as continuing except for the Designated Fund which has now been discontinued. There are no gains or losses other than those included above.

POLDEN GOSPEL HALL TRUST
BALANCE SHEET AS AT 5TH APRIL 2023

| | Notes | As at 05.04.2023 £ | As at 05.04.2022 £ |
|---|---------|--------------------------|--------------------------|
| <u>TANGIBLE FIXED ASSETS</u> | 1.5 & 2 | | |
| Freehold Property at Cost | | | |
| - Hall at Showground Road, Bridgwater | | 690,909 | 691,131 |
| - Improvements to above Hall | | 9,626 | 19,252 |
| Furniture, Fittings and Equipment | | <u>18,674</u> | <u>12,922</u> |
| <u>TOTAL FIXED ASSETS</u> | | <u>719,209</u> | <u>723,305</u> |
| <u>CURRENT ASSETS</u> | | | |
| Debtors | | | |
| Prepayments | | 7,872 | 5,009 |
| Bank Accounts | | 4,069 | 1,542 |
| Cash Awaiting Banking | | 167,208 | 235,993 |
| | | <u>4,155</u> | <u>3,138</u> |
| | | <u>183,304</u> | <u>245,682</u> |
| <u>LESS: CURRENT LIABILITIES – Due within One Year</u> | | | |
| Creditors | | | |
| Accruals | | 2,707 | 1,178 |
| | | <u>1,066</u> | <u>1,012</u> |
| | | <u>3,773</u> | <u>2,190</u> |
| <u>NET CURRENT ASSETS</u> | | <u>179,531</u> | <u>243,492</u> |
| <u>NET ASSETS</u> | | <u>898,740</u> | <u>966,797</u> |
| Represented by:- | | | |
| <u>FUNDS – UNRESTRICTED FUNDS</u> | 10 | | |
| General Fund | | 898,740 | 947,413 |
| Designated Fund | | 0 | (616) |
| <u>Closing Balance</u> | | <u>898,740</u> | <u>966,797</u> |

The Unaudited Financial Statements were approved and authorised for issue by the Trustees of The Polden Gospel Hall Trust on the undermentioned date, and were signed on their behalf by

 _____ Trustee _____ Date

The Notes on Pages 9 to 12 form a part of these Financial Statements.

POLDEN GOSPEL HALL TRUST
NOTES TO THE FINANCIAL STATEMENTS FOR THE YEAR ENDED 5TH APRIL 2023

1. ACCOUNTING POLICIES

1.1 Basis of preparation of Financial Statements

The financial statements have been prepared in accordance with Accounting and Reporting by Charities: Second edition of the Statement of Recommended Practice applicable to charities preparing their accounts in accordance with the Financial Reporting Standard applicable in the UK and Republic of Ireland (FRS 102) issued in October 2019, the Financial Reporting Standard applicable in the United Kingdom and Republic of Ireland (FRS 102), and UK Generally Accepted Accounting Practice.

The functional currency of the Charity is Sterling (£).

The Trust meets the definition of a public benefit entity under FRS 102. Assets and liabilities are initially recognised at historical cost or transaction value unless otherwise stated in the relevant accounting policy notes.

1.2 Incoming Resources

Donations are recognised in the Year in which there is entitlement and probability of receipt and the amount can be measured with reasonable certainty. Income is only deferred when the Charity has to fulfil conditions before becoming entitled to it or where the donor has specified that the income is to be expended in a future year. Gift-aid is added to the value of the donations to which it relates.

Donated services are recognised as income and expenditure in the financial statements when organisations or individuals offer their services and support pro bono. The value of these donated services to the Polden Gospel Hall Trust is considered to be equal to market value which would be paid were the services formally procured. Investment Income is accounted for on a receivable basis.

1.3 Resources Expended

Expenditure is included on an accruals basis. Liabilities are recognised as soon as there is a legal or constructive obligation committing the charity to pay out resources.

Charitable activities comprise those costs directly attributable to the fulfilment of the Charitable objects.

1.4 Governance and Support costs

Support costs have been allocated between governance costs and other support costs. Governance costs comprise all costs involving the public accountability of the Charity and costs related to statutory requirements. Governance and support costs are allocated to charitable activities on the basis of capacity used.

1.5 Tangible Fixed Assets and Depreciation

Freehold Property

Tangible fixed assets are stated at cost less depreciation. Freehold Land is not depreciated. Depreciation is provided at rates calculated to write off the cost, less estimated residual value, of each asset over its expected useful life as follows:-

Freehold Property

The Freehold Property at Showground Road, Bridgwater, is not depreciated except for some improvements thereto in 2019, which are depreciated over 3 years from 6th April 2021 on the straight line basis (previously at 25% per annum on the reducing balance basis). The overall realisable value is considered to be not less than book value.

Furniture, Fittings and Equipment 25% per annum – Reducing balance basis

1.6 Taxation

The Trust is a registered Charity and is not liable to United Kingdom taxation on charitable activities, provided Income falls within the Charitable exemptions and is spent on charitable purposes.

POLDEN GOSPEL HALL TRUST
NOTES TO THE FINANCIAL STATEMENTS FOR THE YEAR ENDED 5TH APRIL 2023 (CONTINUED)

1. ACCOUNTING POLICIES (CONTINUED)

1.7 Funds

The General Unrestricted Fund is free for the Trustees to use for any purpose in furtherance of the Trust's charitable objects. A Designated Fund has also been established for which relevant figures are stated on page 7. This Fund was discontinued during the Year.

1.8 Going Concern

The Trustees consider that there are no material uncertainties about the charity's ability to continue as a going concern. The Trustees do not consider that there are any sources of estimation uncertainty at the reporting date that have a significant risk of causing a material adjustment to the carrying amounts of assets and liabilities within the next reporting period.

2. TANGIBLE FIXED ASSETS

This Comprises:-

| | Freehold Property | Improvement to Freehold Property | Furniture, Fittings and Equipment | Total |
|-----------------------|----------------------|--|---|---------|
| <u>COST</u> | £ | £ | £ | £ |
| As at 06.04.2022 | 692,153 | 68,452 | 57,282 | 817,887 |
| Additions in Year | 0 | 0 | 13,832 | 13,832 |
| Disposals at Cost | 0 | 0 | (1,856) | (1,856) |
| As at 05.04.2023 | 692,153 | 68,452 | 69,258 | 829,863 |
| <u>DEPRECIATION</u> | | | | |
| As at 06.04.2022 | 1,022 | 49,200 | 44,360 | 94,582 |
| Charge for Year | 222 | 9,626 | 6,224 | 16,072 |
| As at 05.04.2023 | 1,244 | 58,826 | 50,584 | 110,654 |
| <u>NET BOOK VALUE</u> | | | | |
| As at 05.04.2023 | 690,909 | 9,626 | 18,674 | 719,209 |
| As at 05.04.2022 | 691,131 | 19,252 | 12,922 | 723,305 |

The Freehold Property owned is at Showground Road, Bridgwater, Somerset for which the Land Registry title numbers are ST101131 and ST198720.

3. TRUSTEES' REMUNERATION AND EXPENSES

No Trustee received any remuneration or other benefits for services rendered in this year or the preceding year. Expenses incurred were reimbursed, if applicable, at cost, with no benefit whatsoever arising to the recipient.

4. EMPLOYEES

The Trust had No employees in this year or the preceding year.

5. VOLUNTEERS

The Trust relies on volunteers to carry out Management, Administration and certain Maintenance work.

6. INDEPENDENT EXAMINER'S FEES

These were:-

| Year to <u>05.04.2023</u> | Year to <u>05.04.2022</u> |
|------------------------------|------------------------------|
| £ | £ |
| 935 | 895 |

POLDEN GOSPEL HALL TRUST
NOTES TO THE FINANCIAL STATEMENTS FOR THE YEAR ENDED 5TH APRIL 2023 (CONTINUED)

7. DONATED SERVICES

| | Year to 05.04.2023 £ | Year to 05.04.2022 £ |
|---|----------------------------|----------------------------|
| To Taunton Vale Gospel Hall Trust (a charity with parallel objectives) | | |
| - To acquire land for a potential Gospel Hall | 89,727 | 0 |
| - For Gospel Hall Running Costs | 4,585 | 11,181 |
| | 94,312 | 11,181 |

8. RESOURCES EXPENDED

| | Meeting Hall Running Costs £ | Year to 05.04.2023 Other Charitable Activities £ | Total £ | Year to 05.04.2022 £ |
|------------------|---------------------------------------|--|------------|----------------------------|
| These were:- | | | | |
| Direct Costs | 45,623 | 113,294 | 158,917 | 50,727 |
| Support Costs | 1,760 | 1,175 | 2,935 | 1,830 |
| Governance Costs | 560 | 375 | 935 | 895 |
| | 47,943 | 114,844 | 162,787 | 53,452 |

9. ANALYSIS OF NET ASSETS BETWEEN FUNDS

| | General Unrestricted Fund £ | Designated Fund £ | Total Funds £ |
|---|--------------------------------------|-------------------------|---------------------|
| <u>AS AT 5TH APRIL 2023</u> | | | |
| Tangible Fixed Assets | 719,209 | 0 | 719,209 |
| Current Assets | 183,304 | 0 | 183,304 |
| Current Liabilities | (3,773) | 0 | (3,773) |
| Total Funds | 898,740 | 0 | 898,740 |

AS AT 5TH APRIL 2022

| | | | |
|-----------------------|---------|-------|---------|
| Tangible Fixed Assets | 723,305 | 0 | 723,305 |
| Current Assets | 245,682 | 0 | 245,682 |
| Current Liabilities | (1,574) | (616) | (2,190) |
| Total Funds | 967,413 | (616) | 966,797 |

There were No Restricted Funds at any time in the 2 Years to 5th April 2023.

POLDEN GOSPEL HALL TRUST
NOTES TO THE FINANCIAL STATEMENTS FOR THE YEAR ENDED 5TH APRIL 2023 (CONTINUED)

10. MOVEMENTS IN FUNDS

| | <u>Opening Balance</u> £ | <u>Incoming Resources</u> £ | <u>Resources Expended</u> £ | <u>Closing Balance</u> £ |
|---|---------------------------------|------------------------------------|------------------------------------|---------------------------------|
| <u>YEAR TO 5TH APRIL 2023</u> | | | | |
| <u>Unrestricted Funds</u> | | | | |
| General Fund | 967,413 | 91,639 | (160,312) | 898,740 |
| Designated Fund | (616) | 3,091 | (2,475) | 0 |
| Total Funds | 966,797 | 94,730 | (162,787) | 898,740 |
| <u>YEAR TO 5TH APRIL 2022</u> | | | | |
| <u>Unrestricted Funds</u> | | | | |
| General Fund | 946,482 | 65,683 | (44,752) | 967,413 |
| Designated Fund | 884 | 7,200 | (8,700) | (616) |
| Total Funds | 947,366 | 72,883 | (53,452) | 966,797 |

There were No Restricted Funds at any time in the 2 Years to 5th April 2023.

11. POST BALANCE SHEET EVENTS; CAPITAL COMMITMENTS AND FUTURE PLANS

No significant Post Balance Sheet Events have arisen. The Trust has, however, committed itself in principle, to assisting the Taunton Value Gospel Hall Trust, which has parallel objectives, with funds towards a further Gospel Hall to be owned by that Trust, and for which a potential site has been found, subject to planning permission, and proposes to raise further funds for this purpose.

12. RELATED PARTY TRANSACTIONS

(a) Donations were received from Trustees and parties connected thereto, in the following totals:-

| <u>Year to</u> <u>05.04.2023</u> | <u>Year to</u> <u>05.04.2022</u> |
|-------------------------------------|-------------------------------------|
| £ | £ |
| 12,355 | 8,882 |

(b) Surplus Computer Equipment acquired in 2021/2022 was sold at its original cost of £810 in this year to Taylorwest a business in which Mr. Jonathan R. Taylor, a Trustee, is a participator. No other related party transactions have arisen in this year or the preceding year.

Polden Gospel Hall Trust

**Public Benefit and Outreach
Report**

2022-2023



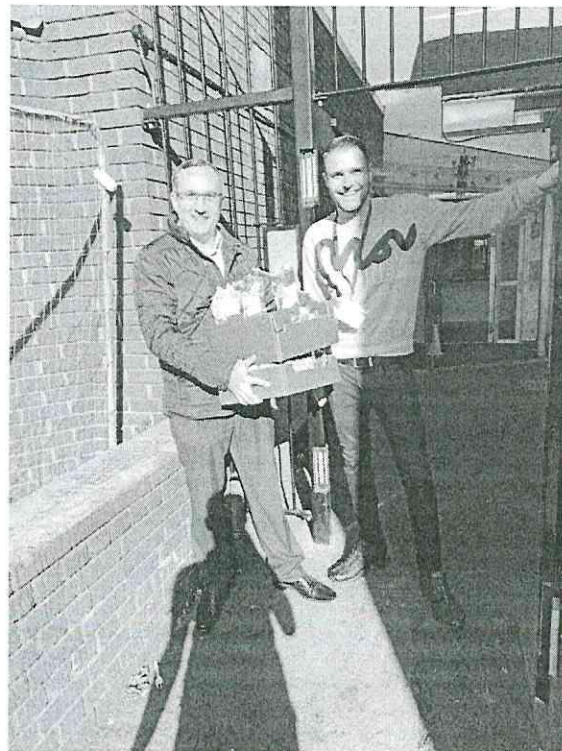
The Trust continues with its principal activity; to provide a facility for the coordination of 'outreach' work into the wider community.

The Trust has been able to re-commence some of its charitable activities and 'outreach' work with the reduction in the COVID-19 restrictions and has been actively engaged with the wider community through the street preaching and charitable work via a separate charity - the Rapid Relief Team, to name a couple. Members of the congregation are encouraged to participate in these activities and engage with the wider community.



Food donations to the homeless

The Trust makes regular donations of food to the homeless via the ARC and YMCA charities to support those in need.



Street preaching and tract distribution

With the lessening of COVID-19 and its restrictions, the street preaching recommenced in September 2022 and there have been approx. 100 street preachings held since then. The preachings are held in Bridgwater on a Monday, Wednesday and Friday, and are attended by preachers from the congregation. A number of gospel tracts are given out at each preaching to passers-by and those who listen.

Charitable work for the Rapid Relief Team (RRT)

Some of the members of the congregation assist the Rapid Relief Team, a separate charity, in their charitable work, such as helping families in need, supporting charitable sleep-outs and responding to emergencies. The following are events that the community has helped with this past year:

- Christmas food box donations, Early Bird Learning program & food box donations to Woolavington School for families in need.



- Avon & Somerset Police Support – RRT was called out to a reactive event in January but stood down once on site. The unused food from this event was then donated to Arc Inspired.

- Arc Inspired's Big Sleep Out event in June 2022 challenged participants to spend a night sleeping outside to raise awareness and funds for Arc and support those experiencing homelessness locally. RRT supported the event by providing a hot cooked breakfast.



The RRT also connected with the following persons of influence:

- Parish Councillor of Woolavington
- Head teacher of Woolavington Primary School
- The Avon & Somerset Police Large Incident Co-ordinator

Conclusion

The trustees are committed to continuing the spread of Christian Gospel in word and deed in line with the charitable purpose of our trust, and we would like to thank the members of our congregation who have used their time, talents and money to support the Polden Gospel Hall Trust in fulfilling its purpose.