



ANNUAL REPORT

2024 – 2025

Charity number: 1158883

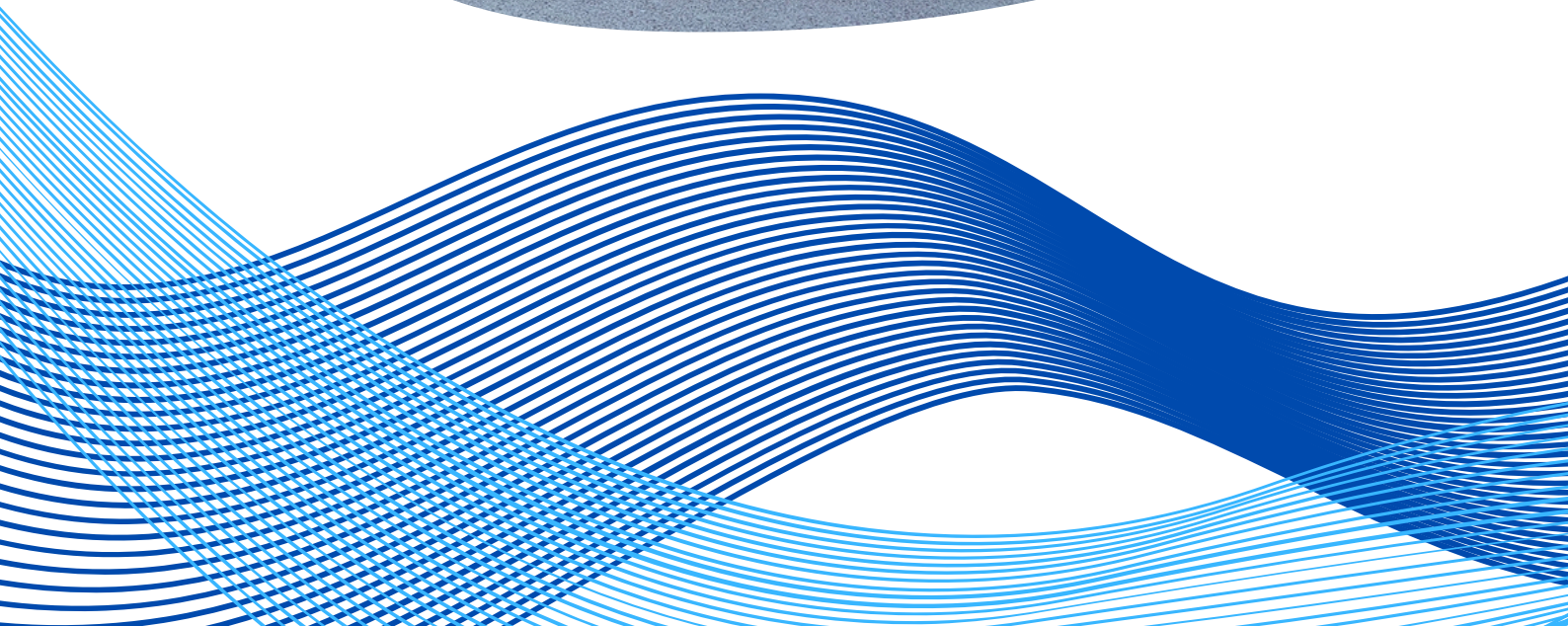
Introduction

This marks the tenth annual report from the Trustee Board of South Chard Church CIO, which was formally registered in October 2014.

Over the past year, we've seen our work continue to shift gently—from structured programmes toward something more responsive and relational. We're doing less that's formal, but perhaps more that's meaningful. The legacy of our former Community Worker is still deeply felt; what began as a defined role has now become part of the church's shared rhythm, woven into daily life and carried by many hands. Under the continued guidance of our Community Manager—and through the love and faithfulness of our church family—we've kept showing up, kept listening, and kept learning to care well in the places we're most needed.

The board currently consists of three trustees, who meet regularly and hold an annual AGM.

We remain affiliated with Churches in Communities International, who continue to offer their wisdom and support when needed. We also enjoy ongoing partnership with Churches Together in Chard (part of Churches Together in England) and look forward to deepening those relationships in the coming year.



Life Together

This year at South Chard Church, we've become even more rooted in the understanding that church isn't something we go to or something we do—it's who we are, wherever we are. The line between "church life" and "community life" doesn't really hold anymore. Whether we're praying together on a Sunday morning, delivering food to a doorstep, chatting over coffee, or walking with someone through a hard season—it's all church. It's all worship. It's all part of the life we're building with God and with one another.

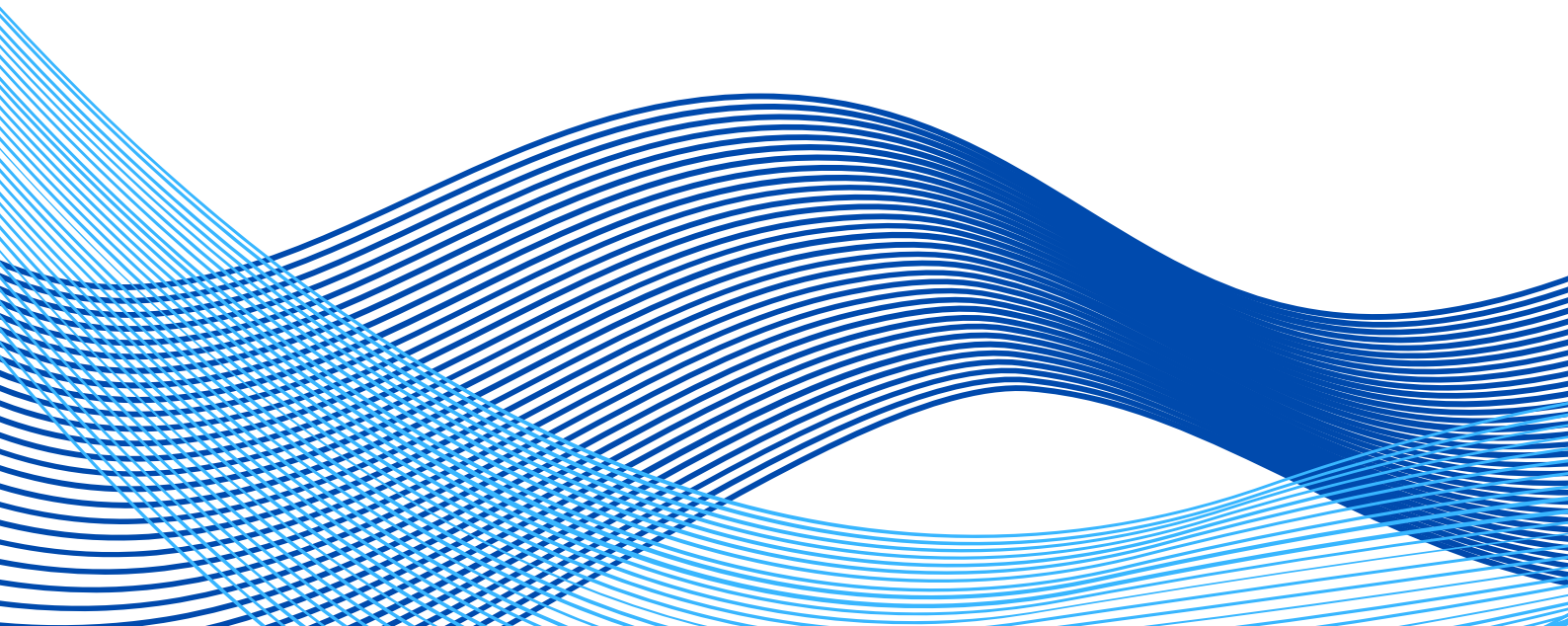
In the pages that follow, you'll see that life expressed in many different ways: gathered and scattered, planned and spontaneous, practical and prayerful. From mentoring young people over milkshakes, to welcoming children into the centre of our Sunday worship; from walking alongside those facing hardship, to sharing food, questions, and scripture in homes—each moment is part of a bigger picture.

We are learning to live as a body, where every part matters and every contribution counts. Whether it's a quiet conversation, a bold prayer, a shared meal, or a helping hand, we believe these simple acts, offered in love, are how God's kingdom takes root among us. This is our life together—and we're grateful for every step of it.

Shared Worship

Every Sunday, we gather in a relaxed and welcoming way, continuing to walk the unfolding path of faith without needing to force or fabricate anything. We've come to trust that God is present without us having to push, and that His Spirit moves in ways we don't always expect.

Our times together are open and spacious, with room for people to share what they're hearing, seeing, or sensing—believing that each person's experience of God can teach us something. In worship and in silence, in conversation and in prayer, we are learning to listen—to God and to one another.



Whole Church, Whole Family

We're learning what it means to be a church family where everyone belongs—children included. Recently, we changed how we meet on Sundays to reflect that.

Instead of sending children out or placing them on the sidelines, we begin our time together with them at the centre, exploring who Jesus is in ways that help all of us learn, laugh, and grow. As the morning continues, they stay with us—often moving into craft or creative activities, but always as part of the same gathering.

We believe that children are not just welcome in church; they are the church. Their voices, questions, and joy matter deeply, and we're building a community where they know they truly belong.



Journeying Together

Growth for us doesn't come through programmes or pressure, but through sharing life with one another. We regularly eat together as a church, with everyone pitching in—bringing food, stories, and a sense of family.

We gather in homes to explore questions about faith, often without clear answers, but with a shared desire to learn and seek God together. Bible studies, walks, beach trips, and spontaneous chats have all become part of how we grow—holding space for wonder, doubt, joy, and discovery. We're learning that growing in faith isn't about having it all sorted, but about walking the journey together with honesty, openness, and God at the centre.

Learning His Way

Our desire to grow as disciples of Jesus continues to shape the rhythm of our shared life. Each week we gather for prayer without an agenda, simply to wait on God, listen, and pray in response to what He reveals.

Bible studies take place in various homes, where people come together around scripture to explore, question, and encourage one another. We also take care to notice and gather the things we sense God is speaking to us as a community—capturing themes, words, and insights shared on Sundays so we can reflect on them together over time.

Growth for us isn't about certainty or speed, but about staying open to the Spirit and walking together in faith.



Rooted in Community

Our weekly Wednesday coffee mornings around tea, cake, and conversation have become so much more than a social—they're one of the clearest ways we've seen God's love at work in simple connection.



These times bring people of all ages together in a relaxed and welcoming space, where stories are shared and friendships form naturally. It's not just about having a chat—it's about building a community where people feel safe to speak, ask for help, and be known. We often see people connected into deeper support through these gentle encounters.

In a world that can feel hurried and disconnected, this is one of the places where we slow down, see each other properly, and let belonging take root.

Good Works

In partnership with Chard Churches Together, our Good Works Youth Team continues to walk alongside secondary school students who are finding things tough in mainstream education. In close collaboration with the local school, we take young people out during the school day for a milkshake or frappe and a friendly chat.

These simple, relaxed moments create space for mentoring, listening, and encouragement—offering them a sense of safety, value, and care. It's a small thing that often means a great deal, reminding each young person that they matter and they're not alone.



Tatworth Tots

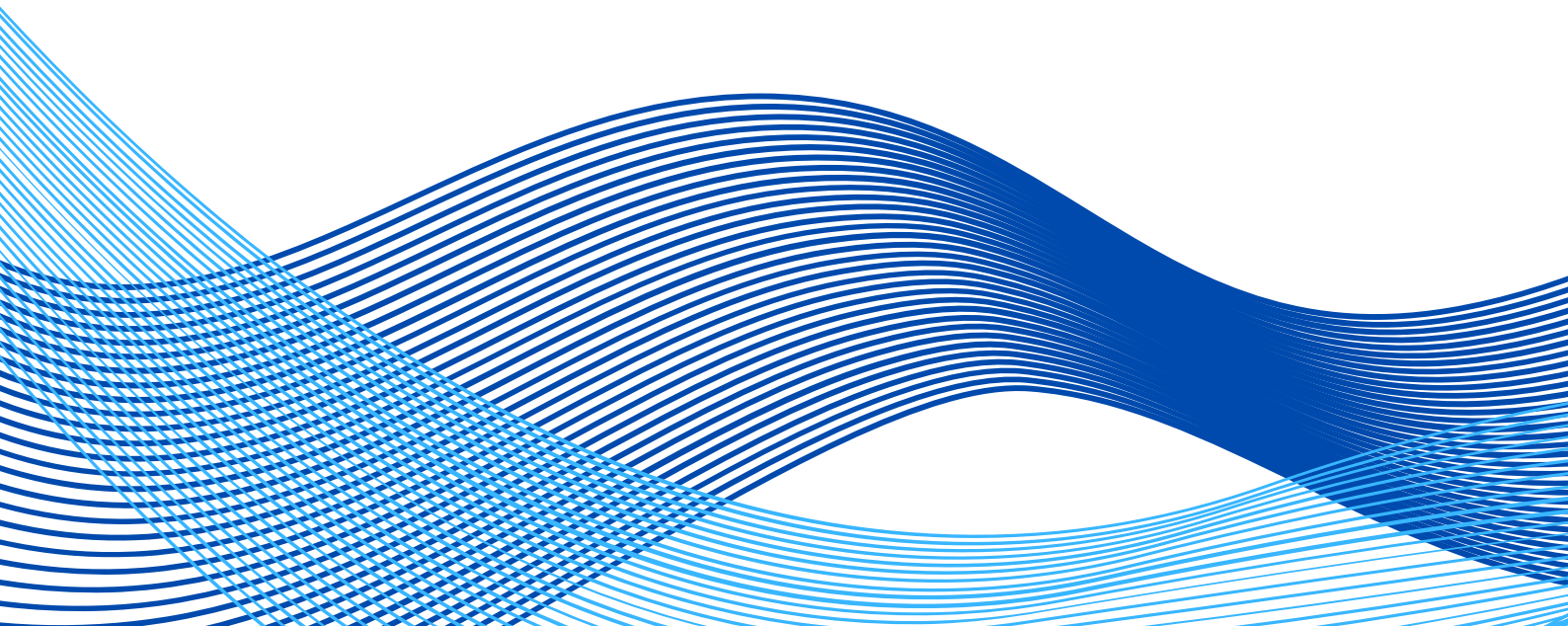
Each week at our parent and toddler sessions, the team works hard to create a warm, welcoming space where families feel safe, seen, and supported. It's a place where parents can catch their breath, share openly, and connect with others on the journey of raising little ones.



Music is woven throughout the sessions, helping children learn through singing, clapping, movement, and actions. These playful activities support language development, coordination, and social interaction—all while having fun.



Alongside the songs and play, our team gently keeps an eye out for families who may need extra support, offering a listening ear and linking them with practical help where needed. It's a space filled with laughter, care, and community—all rooted in love.



Showing up with love

Our personal support continues to reflect our belief that every person is made in the image of God and worthy of dignity, compassion, and care. We walk alongside individuals, families, and small groups facing a wide range of challenges, offering practical help, a listening ear, and a steady, prayerful presence.

This year, that's meant everything from supporting parents in school meetings, to helping with shopping, forms, and parenting advice. We've accompanied individuals to the gym to encourage physical and mental wellbeing and offered safe shelter when it was needed.

Each situation is different, and we do our best to respond with love, humility, and creativity—meeting people where they are, and gently reflecting the hope and kindness of Jesus in the everyday.

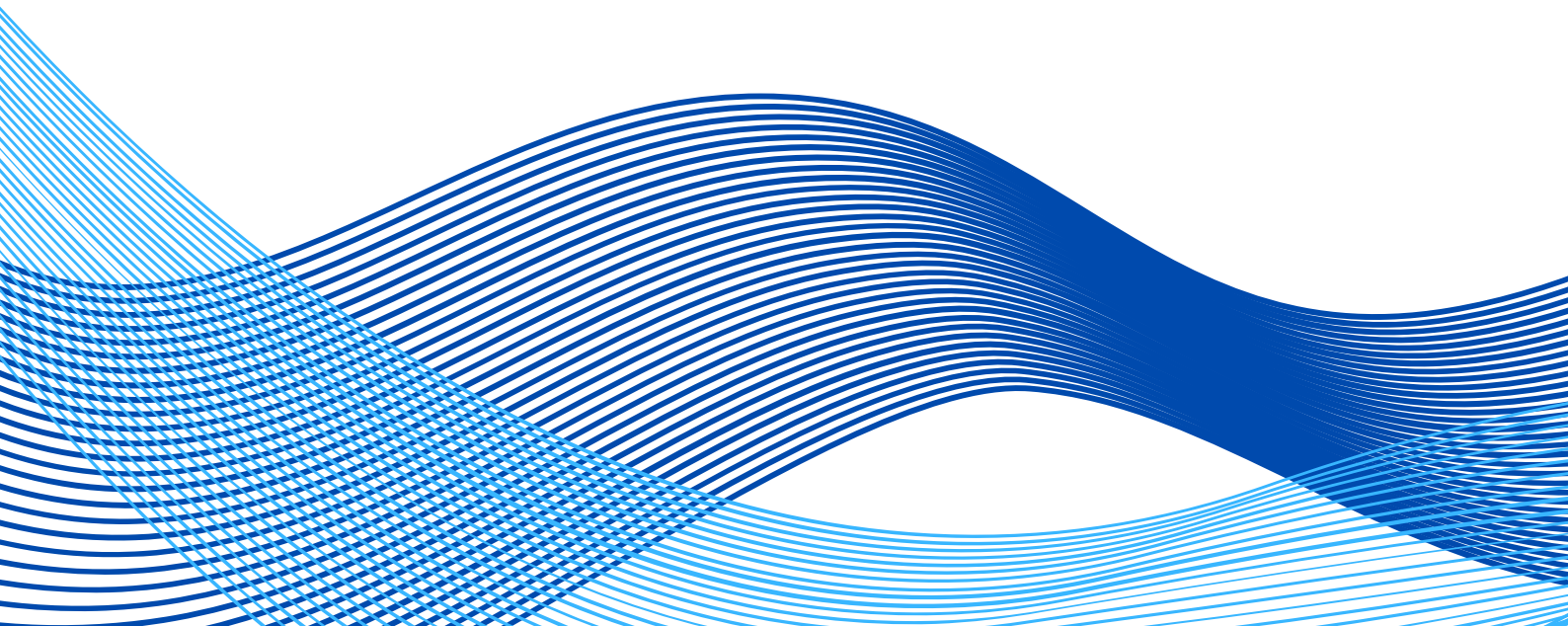
Practical Support

Caring for those in need remains a core part of our life as a church. Through the Love Chard fund—generously supported by individual donations—we're able to respond to urgent needs that fall outside the reach of our partner organisations.

Whether it's supermarket vouchers, essential household items, or something more specific, this fund allows us to offer practical help at just the right moment.

We continue to work closely with Chard Community Hub and Lord's Larder to ensure food reaches those who need it most, distributing regular donations from local supermarkets.

We're deeply thankful for the collaboration between local charities, agencies, and volunteers, especially during Christmas when we joined forces to wrap and deliver hundreds of toys to families across the area—an effort made possible by the generosity of individuals and local businesses, and carried by the love of our amazing volunteer team.



Making Space for the Community

Although our building is currently undergoing renovation—and we're still waiting on God for the provision needed to complete it—it's been encouraging to see the parts of it that are usable still serving the community.

We've been glad to offer the space for Christian training events, as well as free or low-cost children's parties, making it accessible for families who might not otherwise be able to celebrate.

Over Christmas, we hosted the town's Christmas Present Appeal, providing a place for hundreds of donated gifts to be sorted and stored. We also made room for the Shoebox Appeal, allowing that expression of care to continue even while the building is far from finished.

It's not the season we expected—but it's good to know the space we **do** have is still being used to bless others.



Holiday Club

This summer, our volunteers and Community Manager joined with the wider Chard Churches Together team to run the annual Holiday Club—five packed days of fun, faith, and community for over 70 children.

Hosted at the local high school and completely free to attend, the club included lunch each day and a wide range of activities built around this year's theme: *Blast Off!*

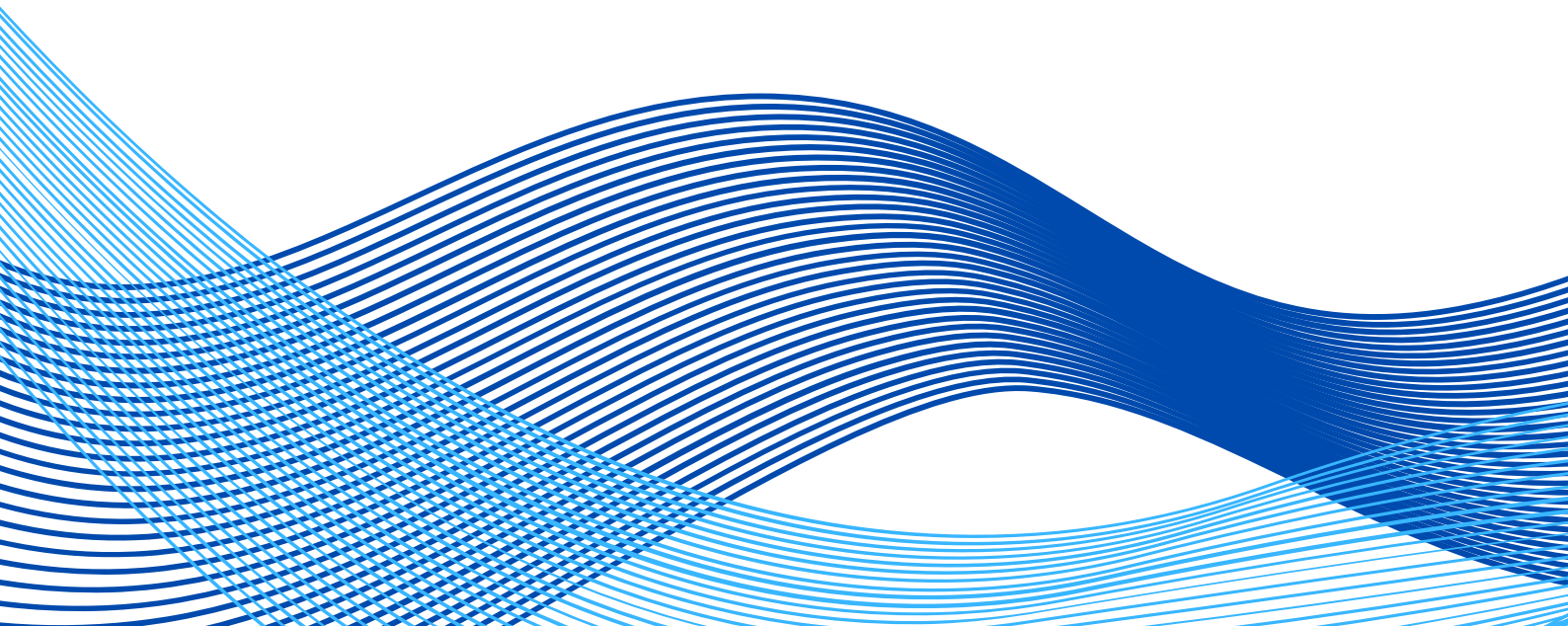
With a space-themed adventure, children explored big ideas, engaged in lively games, creative crafts, music, and storytelling. It was joyful, a little bit wild, and full of moments where faith and friendship grew side by side. Our team played key roles—leading groups, sharing music, and helping to create a welcoming, hope-filled space where children could laugh, learn, and encounter God in a safe and vibrant environment.

Bottled Up

This year, instead of running a formal programme, we found ourselves offering something simpler—but no less valuable: space. With funding from Open Mental Health, we were able to connect a number of individuals with professional counselling, giving them access to skilled support they might not otherwise have been able to afford.

Alongside that, we offered informal spaces for conversation—safe, unhurried moments where people could talk things through, often for the first time. Some had experienced the impact of alcohol in their families; others simply needed somewhere to be heard.

It wasn't mentoring, and it wasn't therapy—but it created room for people to reflect, ask questions, and begin to understand themselves and their situations more clearly. Often, the most powerful thing we offered was presence: listening without trying to fix, and showing up with gentleness, care, and time.



Overseas Support

We continue to support Pastor Moses and the community he serves with both prayer and practical help. A team from South Chard Church has established a monthly sponsorship scheme for five children from a local orphanage, covering their education, food, and housing. In addition to this, we also provide funding for school supplies to ensure the children have what they need to thrive.

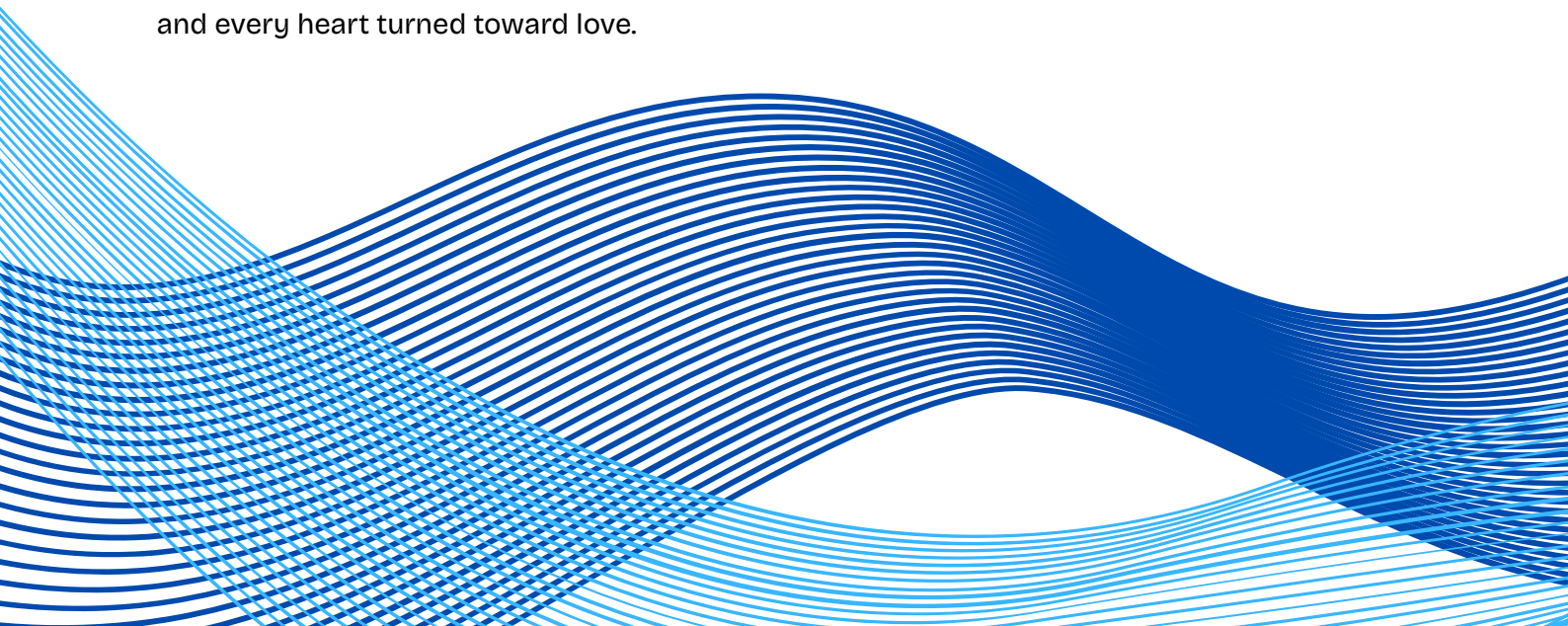
Our financial support contributes to the hire of a hall that serves as the main church building, used throughout the week for gatherings and ministry. With access to this space, Moses has been able to host conferences and respond to the needs of the wider community—providing food, emotional care, and practical support to those facing hardship.



Looking Back, Looking Forward

As we look back on this past year, we're struck by how often God has shown up in the ordinary—through shared meals, quiet prayers, unexpected conversations, and small acts of kindness. We haven't always had a clear plan, but we've learned that faithfulness doesn't always look like certainty. It often looks like showing up, listening, and being willing to move when the Spirit nudges. There have been moments of challenge—especially with the renovation delays—but even in the waiting, we've seen God's provision through people, through prayer, and through the simple grace of still being together.

We step into the year ahead with open hands, thankful for all that's grown, and expectant for what's still to come. We don't know all the answers, but we do know this: Jesus is with us, and He is building something beautiful—through every joint supplying, every voice contributing, and every heart turned toward love.



**South Chard Church
1158883**

End of Year Financial Statements

Year ending March 31st 2025

Statement of Financial Activities

	Unrestricted funds	Restricted funds	Endowment funds	Total funds	Prior year total funds
Incoming resources					
Incoming resources from generated funds	—	—	—	—	£3,158
Voluntary income	£47,155	£275	—	£47,430	£49,655
Activities for generating funds	£50	—	—	£50	£120
Incoming resources from charitable activities	£1,768	—	—	£1,768	£1,807
Other incoming resources	—	—	—	—	—
Total income	£48,973	£275	—	£49,248	£54,742
Resources used					
Charitable activities	£52,714	£2,442	—	£55,157	£68,920
Governance costs	—	—	—	—	—
Total expenditure	£52,714	£2,442	—	£55,157	£68,920
Gains / losses on investment assets	—	—	—	—	—
Net income / (expenditure) resources before transfer	(£3,740)	(£2,167)	—	(£5,908)	(£14,178)
Transfers					
Gross transfers between funds – in	£21,755	—	—	£21,755	£29,643
Gross transfers between funds – out	(£21,622)	(£132)	—	(£21,755)	(£29,643)
Net movement in funds	(£3,608)	(£2,300)	—	(£5,908)	(£14,178)
Total funds brought forward	£23,661	£2,785	—	£26,446	£40,624
Total funds carried forward	£20,052	£485	—	£20,537	£26,446
Represented by					
Unrestricted					
General fund	£78	—	—	£78	£741
Designated					
Annual Expense fund	£799	—	—	£799	£1,595
Children's Work fund	—	—	—	—	£17
Church maintenance fund	£14,269	—	—	£14,269	£14,514
Community	£125	—	—	£125	£172
Love Chard	£94	—	—	£94	£221
Men's Ministry fund	£175	—	—	£175	£177
Mission fund	£1,780	—	—	£1,780	£1,780
Prisons Work	—	—	—	—	£100
Savings	£2,000	—	—	£2,000	£3,000
Special Offering fund	£374	—	—	£374	£874
Tatworth Tots	£144	—	—	£144	£310
Tithe fund	£59	—	—	£59	£6
Youth Worker fund	£149	—	—	£149	£149
Restricted					
Bottled Up	—	£275	—	£275	£1,150
Community Worker	—	—	—	—	£1,425
Manor House Fund	—	£210	—	£210	£210

Balance sheet

	Total funds	Prior year funds
Current assets		
Cash at bank and in hand	£20,537	£26,601
	£20,537	£26,601
Liabilities		
Creditors: Amounts falling due in one year	—	£155
	—	£155
Net current assets less current liabilities	£20,537	£26,446
Total assets less current liabilities	£20,537	£26,446
Total net assets less liabilities	£20,537	£26,446
Represented by		
Unrestricted		
General fund	£78	£741
Designated		
Annual Expense fund	£799	£1,595
Love Chard	£94	£221
Church maintenance fund	£14,269	£14,514
Men's Ministry fund	£175	£177
Mission fund	£1,780	£1,780
Prisons Work	—	£100
Savings	£2,000	£3,000
Special Offering fund	£374	£874
Tithe fund	£59	£6
Tatworth Tots	£144	£310
Youth fund	£149	£149
Children's Work fund	—	£17
Community	£125	£172
Restricted		
Bottled Up	£275	£1,150
Community Worker	—	£1,425
Manor House Fund	£210	£210
Funds of the church	£20,537	£26,446

Statement of assets and liabilities

	General	Designated	Restricted	Endowment	This year	Last year
Current assets - Cash at bank and in hand						
NatWest Current -	£115	£19,974	£485	—	£20,574	£26,470
NatWest Credit -	(£36)	—	—	—	(£36)	£130
Totals	£78	£19,974	£485	—	£20,537	£26,601
Liabilities - Agency accounts						
Agency collections -	—	—	—	—	—	£155
Totals	—	—	—	—	—	£155
Grand total	£78	£19,974	£485	—	£20,537	£26,446

Analysis of income and expenditure

						Total	
	Unrestricted	Designated	Restricted	Endowment	This year	Last year	
INCOME AND ENDOWMENTS							
Incoming resources from generated funds							
0119 - Grant	—	—	—	—	—	£3,158	
Total	—	—	—	—	—	£3,158	
Incoming resources from generated funds - Voluntary income							
0101 - General Offering	£6,128	—	—	—	£6,128	£8,365	
0102 - Standing Orders	£25,871	—	—	—	£25,871	£29,078	
0103 - Special Offering	—	£40	—	—	£40	£262	
0104 - Special Gifts	£5,500	£1,890	£75	—	£7,465	£2,557	
0105 - Standing Orders for Specific Purposes	—	£754	£200	—	£954	£1,177	
0109 - Gift Aid	£6,971	—	—	—	£6,971	£8,214	
Total	£44,471	£2,684	£275	—	£47,430	£49,655	
Incoming resources from generated funds - Activities for generating funds							
0107 - Fundraising	—	—	—	—	—	£20	
0110 - Building Hire	£50	—	—	—	£50	£100	
Total	£50	—	—	—	£50	£120	
Incoming resources from charitable activities							
0106 - Kids & Co	—	£551	—	—	£551	£746	
0111 - Shop	—	—	—	—	—	£40	
0114 - Men's Ministry	—	£16	—	—	£16	£419	
0116 - Repayment	£999	—	—	—	£999	£50	
0120 - Car Scheme	—	—	—	—	—	£438	
0122 - Donations	£200	—	—	—	£200	£112	
Total	£1,199	£568	—	—	£1,768	£1,807	
INCOME TOTAL	£45,721	£3,252	£275	—	£49,248	£54,742	

EXPENDITURE

Charitable activities

0501 - Gas	£1,562	—	—	—	£1,562	£1,971
0502 - Electricity	£1,379	—	—	—	£1,379	£1,469
0503 - Water	£565	—	—	—	£565	£623
0504 - Telephone	—	—	—	—	—	£10
0505 - Broadband	£1,546	—	—	—	£1,546	£724
0506 - Website	£645	—	—	—	£645	£342
0507 - Building and Contents Insurance	£2,378	—	—	—	£2,378	£2,299
0508 - Refurbishment and Maintenance	—	£345	—	—	£345	£1,103
0509 - Housekeeping	£559	—	—	—	£559	£2,024
0510 - Office Equipment	—	—	—	—	—	£64
0511 - Stage equipment and repairs	£30	£300	—	—	£330	—
0512 - Shop	—	—	—	—	—	£37
0513 - Outreach	—	—	—	—	—	£200
0514 - Hospitality	£174	—	—	—	£174	£83
0515 - Giving	£919	£4,293	—	—	£5,212	£5,311
0517 - Administrator's salary	—	£7,138	—	—	£7,138	£6,502
0519 - Domestic salary	£1,388	—	—	—	£1,388	—
0522 - Volunteer expenses	—	—	—	—	—	£995
0524 - Tax	—	£4,053	—	—	£4,053	£6,508
0525 - DBS checks	£13	—	—	—	£13	£62
0527 - Accountants fees	£732	—	—	—	£732	£627
0528 - Resources	£458	£28	—	—	£487	£741
0529 - Food and Drink	£367	£231	—	—	£599	£1,182
0530 - Office Supplies	£30	—	—	—	£30	£2
0533 - Printing	£308	—	—	—	£308	£151
0535 - Licences	£336	—	—	—	£336	£439
0536 - Subscriptions	£818	—	—	—	£818	£1,640
0537 - Bank charges	£30	—	—	—	£30	£30
0538 - Retreats/Visits/Counselling	—	—	£1,150	—	£1,150	£1,140
0541 - Business mobile	£695	—	—	—	£695	£559
0543 - Pension Contributions	£1,288	—	—	—	£1,288	£1,699
0544 - Refund	—	—	—	—	—	(£541)
0545 - Community Manager salary	£20,091	—	—	—	£20,091	£19,691
0546 - Community Worker salary	—	—	£1,292	—	£1,292	£11,219
Total	£36,323	£16,391	£2,442	—	£55,157	£68,920

Governance costs

0523 - Legal fees	—	—	—	—	—	—
Total	—	—	—	—	—	—
EXPENDITURE TOTAL	£36,323	£16,391	£2,442	—	£55,157	£68,920
GRAND TOTAL	£9,398	(£13,139)	(£2,167)	—	(£5,908)	(£14,178)

This report dated: 30th April 2025



Section A

Independent Examiner's Report

Report to the trustees/
members of

Charity Name
South Chard Church

On accounts for the year
ended

March 2025

Charity no
(if any)

1158883

Set out on pages

1 to 2

(remember to include the page numbers of additional sheets)

I report to the trustees on my examination of the accounts of the above charity ("the Trust") for the year ended 31/03/2025.

Responsibilities and
basis of report

As the charity's trustees, you are responsible for the preparation of the accounts in accordance with the requirements of the Charities Act 2011 ("the Act").

I report in respect of my examination of the Trust's accounts carried out under section 145 of the 2011 Act and in carrying out my examination, I have followed all the applicable Directions given by the Charity Commission under section 145(5)(b) of the Act.

Independent
examiner's statement

I have completed my examination. I confirm that no material matters have come to my attention in connection with the examination which gives me cause to believe that in, any material respect:

- the accounting records were not kept in accordance with section 130 of the Charities Act; or
- the accounts did not accord with the accounting records; or
- the accounts did not comply with the applicable requirements concerning the form and content of accounts set out in the Charities (Accounts and Reports) Regulations 2008 other than any requirement that the accounts give a 'true and fair' view which is not a matter considered as part of an independent examination.

I have no concerns and have come across no other matters in connection with the examination to which attention should be drawn in this report in order to enable a proper understanding of the accounts to be reached.

Signed:

G Meyers

Date:

28/09/2025

Name:

Dr Gregory Meyers

Relevant professional
qualification(s) or body
(if any):

Address:

28 Middlepeak Way, Sheffield

S13 9DL

Section B**Disclosure**

Only complete if the examiner needs to highlight material matters of concern (see CC32, Independent examination of charity accounts: directions and guidance for examiners).

Give here brief details of any items that the examiner wishes to disclose.