

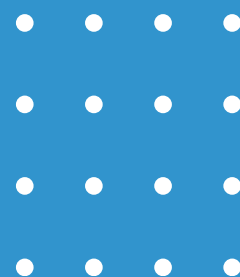
2022/2023

# ANNUAL REPORT

Charity number 1158883



South  
Chard  
CHURCH



# South Chard Church

This is the eighth annual report from the Trustee board at South Chard Church CIO which was formally registered in October 2014.

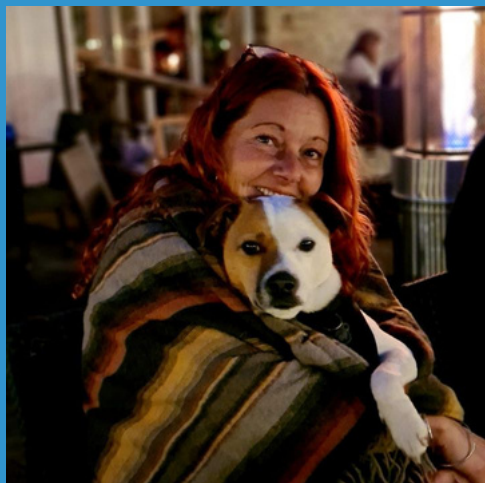
Since our previous annual review, the church has increased the amount of work we do within the local community. New groups have been established which are specific to the needs of the people we are connected with. We have been able to support more people practically, spiritually and emotionally due to the appointment of a Community Worker alongside our Community Manager. All members of our church are encouraged to learn from one another, offer pastoral support to each other and play their part within the community.

We have four trustees on the board, who meet on a regular basis and hold an AGM.

South Chard Church continues to be affiliated with Churches in Communities International, who are on standby to offer any support or advice should we require it. We also continue to work with Churches Together in Chard (part of Churches Together In England) and look forward to furthering our relationship with them in the coming year.

# Community Life

This year we have continued to build on the success of The Hub at South Chard Church. This initiative is designed to engage our resources and volunteers in various programmes that support community life.



## Newly Appointed Community Worker

We were thrilled to announce the appointment of a new Community Worker, Clare Redgrave. The post is funded by Somerset Community Foundation. Working alongside our Community Manager, Jenny Reid, Clare works to support the growing work we are doing in our local community. She brings years of expertise working in the charitable field, a strategic mindset and chef skills to the table. As well as several dogs!

## Coffee Mornings

We continue to run our coffee mornings every week. It's become a great place for people to connect. During the winter months we teamed up with several local charities to create Chard Warm Spaces. We pooled our expertise and secured shared funding to keep our spaces open for longer.



For several months we were able to secure weekly visits from Cosmic, a local project that aimed to help people who were isolated due to lack of access to technology. People were able to access training and devices. One lady with very little tech skills built her own website to showcase her short stories; some got fitbits; smart phones and laptops and were able to access training in how to use them.

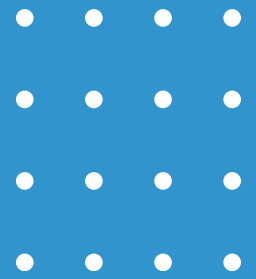


## Food Provision

We continue to work with our partners to provide food to where it is most needed. We work closely with Chard Community Hub and our local food bank (Lords Larder) and often get donations from our local supermarkets which we distribute to the community. We absolutely value the joined up approach our local charities and agencies are taking to ensure no one goes hungry.



At Christmas time we worked together to give out hundreds of children's toys to families in our local community. Individuals and businesses donated to the cause and a mammoth team of volunteers rallied together to be Santa's elves and wrap and deliver the presents.



We have a small fund called "Love Chard" that individuals can donate into. We use this fund when we find someone with a need that cannot be easily sourced from our partners. We use this fund to give people supermarket vouchers or buy an essential household product if theirs breaks.



## Children and Young People

Working with Chard Churches Together a team of our volunteers go out every Wednesday to our local skate park to meet and chat with the youth and build relationships with them. This August we put on a Skate Jam event, bringing in new ramps; music; a BBQ and hosting a Skate and Scoot competition, with prizes. We love to help children get outside, get muddy, and experience nature so we also run forest walks to encourage exploration.

Some of our work with children is linked to our family work, and at times our workers will assist families with school meetings (where concerns are raised) and will liaise with other agencies to seek the right provision for children and young people who are struggling.

## Kids Matter

In partnership with two local primary schools we have now run two Kids Matter courses ([www.kidsmatter.org.uk](http://www.kidsmatter.org.uk)), helping parents get together to explore and learn new parenting ideas. Our facilitators work hard to create a welcoming, non judgmental environment of encouragement and mutual support. We have provided the course to sixteen local families this year.



"It has been a real privilege to spend time getting together with parents. Sometimes it is just about realising you are not alone. Sharing your parenting experience with others only to hear "me too" helps parents realise that the struggles they face are often universal, and gives them the courage to try out new strategies.

Gill Bough  
Kids Matter Facilitator

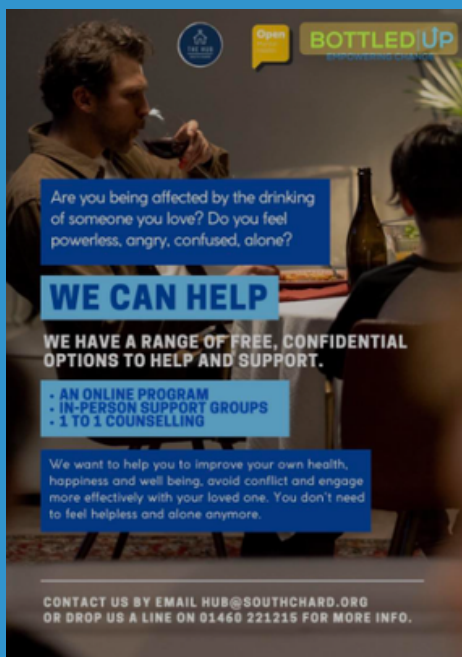


## Car Scheme

Our car scheme has flourished this year, communicating a real need in our community for transport. Working with the support of our local council, our volunteer driver pool of six have undertaken 83 journeys, helping our members access essential appointments.



We are working hard to implement systems to facilitate this growing work and have had funding from Chard Town Council to help us with a new laptop and DBS checks.



## Bottled up

Bottled Up is a programme designed to support families of alcoholics. We are now working closely with the founders to run this programme through the Hub. We have also successfully secured funding of £2000 from Open Mental Health to support those in need of one to one counselling.

Due to unexpected circumstances we had to postpone the launch of this project, but our volunteers were trained this year and we are primed and ready to launch.

## Outstanding Volunteers

Our volunteer team continues to amaze us! This year is no exception. From helping people to get on top of their house or garden to providing bereavement support, wrapping Christmas presents or delivering food to even running a pop up herb growing course. We work hard to listen to our volunteers' ideas and give room and support in order for them to succeed. The team is diverse, friendly and ever growing and we are so proud to call them our friends.





We run a weekly parent and toddler session which is facilitated by three volunteers. We have over 30 families attending regularly. Every session comes to an end with Gill providing a song and instrument time where all the children and parents are encouraged to join in.

Our Tots team try to identify those families who might need a little extra support and have connected several parents with financial support; food provision; emotional support and access to our Kids Matter parenting course.

## External links

We know that we achieve more when we work together. That's why we are part of the Chard One Team (regular, local multi agency meetings) and it's why our Community Manager is a Council Coordinator for CiC (Churches in Communities), the vice chair of our local Independent Advisory Group for the Police (IAG). We continue to value our partners and invest in our connections. This year our Community Manager attended the NAIAG (National Association of Independent Advisory Groups to the Police) in Bedfordshire to continue to contribute to the conversation around how the community can best speak into the policies and procedures of the Police.

"Working with external agencies is at the heart of what we do. We have achieved so much this year that wouldn't have been possible prior to working together with our partners."

Jenny, 44,  
Community Manager

*"Knowing I can request training in a certain area if I feel I am lacking in expertise is so reassuring. I learnt so much on the impact measurement course that I have been able to implement, as well as share my learning with our local partners."*

Jenny, 44,  
Community Manager

## Training

We work hard to ensure all our staff and volunteers have relevant up to date training. This year we accessed training for different members of our team, putting our community manager on an extended course around digital engagement and impact measurement and we rolled out in-house safeguarding training day for all our volunteers.





# Church Life



## Sunday Morning Services

We meet every Sunday morning at 10am. We never really know what is going to happen these days as we have moved to a more informal set up where we listen to the Holy Spirit and allow Him to lead our time together. This has made for some interesting, amusing and absolutely wonderful encounters as we track this road together, recognising that there is not one person who has all the answers, rather we all, perhaps, bring a little piece to the table.



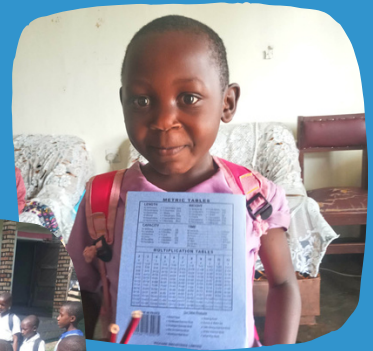
## Growing Together

In line with our ethos we make room and facilitate individuals to start group gatherings and other get togethers where they feel it is needed. We have had several pop up Bible studies hosted in homes and at our building; discussion groups; prayer meetings and one to one discipleship develop in this way. We are encouraged to recognise again and again that everyone has something to contribute and we love to see this being worked out.



## Overseas Support

We continue to support Pastor Moses. A team of volunteers from South Chard Church have set up a scheme whereby we sponsor five children from an orphanage, on a monthly basis. This sponsorship pays for each child's educational needs, food, and housing. Furthermore we also assist financially with the hire of a hall which is used as their main church premises, holding meetings and clubs during the week and services at the weekend.

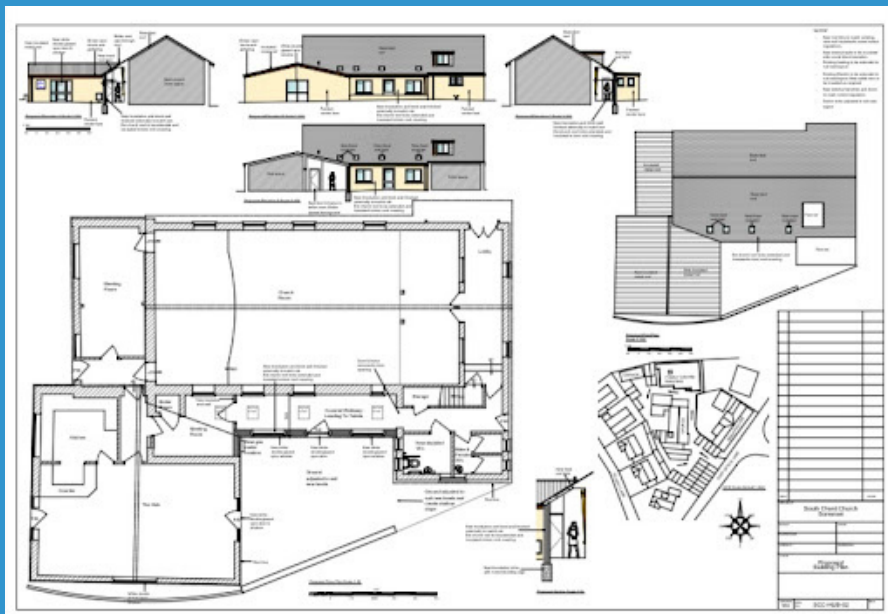


## Building development



Since our last annual review we have decided to move forward with our decision to create a community space/drop in centre in one of our buildings.

Drawings have been created, conversations are happening with our local council and we are preparing to submit an application to the planning department. Our fundraising team is on standby ready to apply for funding bids to finance the work.





**South Chard Church  
1158883**

**End of Year Financial Statements**

**Year ending March 31 2023**

## Statement of Financial Activities

	Unrestricted funds	Restricted funds	Endowment funds	Total funds	Prior year total funds
<b>Incoming resources</b>					
Incoming resources from generated funds	9,558	16,000	—	25,558	2,500
Voluntary income	49,117	—	—	49,117	51,328
Activities for generating funds	12	—	—	12	356
Incoming resources from charitable activities	1,012	1,234	—	2,247	1,152
Other incoming resources	11,452	—	—	11,452	—
<b>Total income</b>	<b>71,153</b>	<b>17,234</b>	<b>—</b>	<b>88,388</b>	<b>55,337</b>
<b>Resources used</b>					
Charitable activities	55,536	4,581	—	60,117	54,770
Governance costs	—	—	—	—	—
<b>Total expenditure</b>	<b>55,536</b>	<b>4,581</b>	<b>—</b>	<b>60,117</b>	<b>54,770</b>
Gains / losses on investment assets	—	—	—	—	—
<b>Net income / (expenditure) resources before transfer</b>	<b>15,617</b>	<b>12,653</b>	<b>—</b>	<b>28,270</b>	<b>567</b>
<b>Transfers</b>					
Gross transfers between funds - in	27,424	—	—	27,424	21,485
Gross transfers between funds - out	(26,489)	(934)	—	(27,424)	(21,485)
<b>Other recognised gains / losses</b>					
Gains on revaluation, fixed assets, charity's own use	—	—	—	—	—
<b>Net movement in funds</b>	<b>16,551</b>	<b>11,718</b>	<b>—</b>	<b>28,270</b>	<b>567</b>
<b>Total funds brought forward</b>	<b>10,143</b>	<b>2,210</b>	<b>—</b>	<b>12,353</b>	<b>11,786</b>
<b>Total funds carried forward</b>	<b>26,695</b>	<b>13,928</b>	<b>—</b>	<b>40,624</b>	<b>12,353</b>
<b>Represented by</b>					
<b>Unrestricted</b>					
General fund	2,187	—	—	2,187	145
<b>Designated</b>					
Administrator fund	—	—	—	—	—
Annual Expense fund	1,251	—	—	1,251	1,077
CAP fund	—	—	—	—	—
Children's Work fund	17	—	—	17	17
Church Weekend fund	—	—	—	—	—
Church maintenance fund	14,287	—	—	14,287	4,007
Community	1,161	—	—	1,161	1,441
Ignite fund	—	—	—	—	—
India	—	—	—	—	—
Kids Matter	—	—	—	—	—
Love Chard	397	—	—	397	538
Men's Ministry fund	71	—	—	71	109
Ministry School fund	—	—	—	—	—
Mission fund	760	—	—	760	—
Pappy Daniel India fund	—	—	—	—	—
Prisons Work	100	—	—	100	100
Savings	5,000	—	—	5,000	1,000
Special Offering fund	574	—	—	574	574
Tatworth Tots	377	—	—	377	278
Tithe fund	99	—	—	99	323
Uganda	60	—	—	60	180
Youth Worker fund	349	—	—	349	349
<b>Restricted</b>					
Bottled Up	—	2,000	—	2,000	2,000
Car Scheme	—	1,086	—	1,086	—
Community Worker	—	10,632	—	10,632	—
Manor House Fund	—	210	—	210	210

## Balance sheet

	Total funds	Prior year funds
<b>Current assets</b>		
Cash at bank and in hand	40,899	12,353
	<b>40,899</b>	<b>12,353</b>
<b>Liabilities</b>		
Creditors: Amounts falling due in one year	275	—
	<b>275</b>	<b>—</b>
<b>Net current assets less current liabilities</b>	<b>40,624</b>	<b>12,353</b>
<b>Total assets less current liabilities</b>	<b>40,624</b>	<b>12,353</b>
<b>Total net assets less liabilities</b>	<b>40,624</b>	<b>12,353</b>
<b>Represented by</b>		
<b>Unrestricted</b>		
General fund	2,187	145
<b>Designated</b>		
Annual Expense fund	1,251	1,077
Love Chard	397	538
Church maintenance fund	14,287	4,007
Men's Ministry fund	71	109
Mission fund	760	—
Prisons Work	100	100
Ministry School fund	—	—
Savings	5,000	1,000
Special Offering fund	574	574
Tithe fund	99	323
Tatworth Tots	377	278
Administrator fund	—	—
Uganda	60	180
Church Weekend fund	—	—
Youth Worker fund	349	349
CAP fund	—	—
Children's Work fund	17	17
Community	1,161	1,441
Ignite fund	—	—
India	—	—
Pappy Daniel India fund	—	—
Kids Matter	—	—
<b>Restricted</b>		
Bottled Up	2,000	2,000
Community Worker	10,632	—
Car Scheme	1,086	—
Manor House Fund	210	210
<b>Funds of the church</b>	<b>40,624</b>	<b>12,353</b>

## Statement of assets and liabilities

	General	Designated	Restricted	Endowment	This year	Last year
<b>Current assets - Cash at bank and in hand</b>						
NatWest Current -	2,260	24,508	14,203	—	40,972	12,435
NatWest Credit -	(72)	—	—	—	(72)	(81)
<b>Totals</b>	<b>2,187</b>	<b>24,508</b>	<b>14,203</b>	<b>—</b>	<b>40,899</b>	<b>12,353</b>
<b>Liabilities - Agency accounts</b>						
Agency collections -	—	—	275	—	275	—
<b>Totals</b>	<b>—</b>	<b>—</b>	<b>275</b>	<b>—</b>	<b>275</b>	<b>—</b>
<b>Grand total</b>	<b>2,187</b>	<b>24,508</b>	<b>13,928</b>	<b>—</b>	<b>40,624</b>	<b>12,353</b>



## Fund movement by type

	Opening	Incoming	Outgoing	Transfers	Gains/losses	Journals	Closing
<b>AE - Annual Expense fund</b>							
Designated	1,077	6,000	9,094	3,268	—	—	1,251
Sub-total for AE	1,077	6,000	9,094	3,268	—	—	1,251
<b>Admin - Administrator fund</b>							
Designated	—	720	6,240	5,520	—	—	—
Sub-total for Admin	—	720	6,240	5,520	—	—	—
<b>BU - Bottled Up</b>							
Restricted	2,000	—	—	—	—	—	2,000
Sub-total for BU	2,000	—	—	—	—	—	2,000
<b>CAP - CAP fund</b>							
Designated	—	—	—	—	—	—	—
Sub-total for CAP	—	—	—	—	—	—	—
<b>CW - Community Worker</b>							
Restricted	—	15,000	3,494	(873)	—	—	10,632
Sub-total for CW	—	15,000	3,494	(873)	—	—	10,632
<b>Car - Car Scheme</b>							
Restricted	—	2,234	1,087	(61)	—	—	1,086
Sub-total for Car	—	2,234	1,087	(61)	—	—	1,086
<b>Children - Children's Work fund</b>							
Designated	17	—	—	—	—	—	17
Sub-total for Children	17	—	—	—	—	—	17
<b>Comm - Community</b>							
Designated	1,441	2,149	2,154	(274)	—	—	1,161
Sub-total for Comm	1,441	2,149	2,154	(274)	—	—	1,161
<b>Ignite - Ignite fund</b>							
Designated	—	—	—	—	—	—	—
Sub-total for Ignite	—	—	—	—	—	—	—
<b>Ind - India</b>							
Designated	—	—	—	—	—	—	—
Sub-total for Ind	—	—	—	—	—	—	—
<b>India - Pappy Daniel India f</b>							
Designated	—	—	—	—	—	—	—
Sub-total for India	—	—	—	—	—	—	—
<b>KM - Kids Matter</b>							
Designated	—	—	120	120	—	—	—
Sub-total for KM	—	—	120	120	—	—	—
<b>LC - Love Chard</b>							
Designated	538	619	409	(350)	—	—	397
Sub-total for LC	538	619	409	(350)	—	—	397
<b>Maint - Church maintenance f</b>							
Designated	4,007	13,931	1,358	(2,293)	—	—	14,287
Sub-total for Maint	4,007	13,931	1,358	(2,293)	—	—	14,287
<b>Manor - Manor House Fund</b>							
Restricted	210	—	—	—	—	—	210
Sub-total for Manor	210	—	—	—	—	—	210
<b>Men - Men's Ministry fund</b>							
Designated	109	200	238	—	—	—	71
Sub-total for Men	109	200	238	—	—	—	71
<b>Mission - Mission fund</b>							
Designated	—	1,000	239	—	—	—	760
Sub-total for Mission	—	1,000	239	—	—	—	760
<b>Prison - Prisons Work</b>							
Designated	100	—	—	—	—	—	100

<b>Sub-total for Prison</b>	<b>100</b>	—	—	—	—	—	<b>100</b>
<b>SCSM - Ministry School fund</b>							
Designated	—	—	—	—	—	—	—
<b>Sub-total for SCSM</b>	<b>—</b>	<b>—</b>	<b>—</b>	<b>—</b>	<b>—</b>	<b>—</b>	<b>—</b>
<b>Save - Savings</b>							
Designated	1,000	—	—	4,000	—	—	5,000
<b>Sub-total for Save</b>	<b>1,000</b>	<b>—</b>	<b>—</b>	<b>4,000</b>	<b>—</b>	<b>—</b>	<b>5,000</b>
<b>SpecOff - Special Offering fun</b>							
Designated	574	—	—	—	—	—	574
<b>Sub-total for SpecOff</b>	<b>574</b>	<b>—</b>	<b>—</b>	<b>—</b>	<b>—</b>	<b>—</b>	<b>574</b>
<b>Tithe - Tithe fund</b>							
Designated	323	—	2,169	1,945	—	—	99
<b>Sub-total for Tithe</b>	<b>323</b>	<b>—</b>	<b>2,169</b>	<b>1,945</b>	<b>—</b>	<b>—</b>	<b>99</b>
<b>Tots - Tatworth Tots</b>							
Designated	278	606	272	(235)	—	—	377
<b>Sub-total for Tots</b>	<b>278</b>	<b>606</b>	<b>272</b>	<b>(235)</b>	<b>—</b>	<b>—</b>	<b>377</b>
<b>Uganda - Uganda</b>							
Designated	180	—	1,920	1,800	—	—	60
<b>Sub-total for Uganda</b>	<b>180</b>	<b>—</b>	<b>1,920</b>	<b>1,800</b>	<b>—</b>	<b>—</b>	<b>60</b>
<b>Weekend - Church Weekend fund</b>							
Designated	—	—	—	—	—	—	—
<b>Sub-total for Weekend</b>	<b>—</b>	<b>—</b>	<b>—</b>	<b>—</b>	<b>—</b>	<b>—</b>	<b>—</b>
<b>Youth - Youth Worker fund</b>							
Designated	349	—	—	—	—	—	349
<b>Sub-total for Youth</b>	<b>349</b>	<b>—</b>	<b>—</b>	<b>—</b>	<b>—</b>	<b>—</b>	<b>349</b>
<b>General - General fund</b>							
Unrestricted	145	45,925	31,317	(12,566)	—	—	2,187
<b>Sub-total for General</b>	<b>145</b>	<b>45,925</b>	<b>31,317</b>	<b>(12,566)</b>	<b>—</b>	<b>—</b>	<b>2,187</b>
<b>Grand total</b>	<b>12,353</b>	<b>88,388</b>	<b>60,117</b>	<b>—</b>	<b>—</b>	<b>—</b>	<b>40,624</b>

## Analysis of income and expenditure

						Total	
	Unrestricted	Designated	Restricted	Endowment	This year	Last year	
<b>INCOME AND ENDOWMENTS</b>							
<b>Incoming resources from generated funds</b>							
0108 - Bank Interest	—	—	—	—	—	—	—
0119 - Grant	1,126	8,431	16,000	—	25,558	2,500	—
Total	1,126	8,431	16,000	—	25,558	2,500	—
<b>Incoming resources from generated funds - Voluntary income</b>							
0101 - General Offering	8,932	—	—	—	8,932	6,131	—
0102 - Standing Orders	26,362	—	—	—	26,362	30,946	—
0103 - Special Offering	70	505	—	—	575	1,330	—
0104 - Special Gifts	1,350	2,717	—	—	4,067	4,125	—
0105 - Standing Orders for Specific Purposes	180	2,019	—	—	2,199	3,064	—
0109 - Gift Aid	6,981	—	—	—	6,981	5,731	—
0118 - Children's Offering	—	—	—	—	—	—	—
Total	43,876	5,241	—	—	49,117	51,328	—
<b>Incoming resources from generated funds - Activities for generating funds</b>							
0107 - Fundraising	12	—	—	—	12	356	—
0110 - Building Hire	—	—	—	—	—	—	—
Total	12	—	—	—	12	356	—
<b>Incoming resources from charitable activities</b>							
0106 - Kids & Co	—	606	—	—	606	588	—
0111 - Shop	74	—	—	—	74	166	—
0112 - Conference registration	—	—	—	—	—	—	—
0113 - Miscellaneous	—	—	—	—	—	—	—
0114 - Men's Ministry	—	200	—	—	200	61	—
0115 - Church Weekend payment	—	—	—	—	—	—	—
0116 - Repayment	130	—	—	—	130	336	—
0117 - SCSM	—	—	—	—	—	—	—
0120 - Car Scheme	—	—	1,234	—	1,234	—	—
Total	205	807	1,234	—	2,247	1,152	—
<b>Other incoming resources</b>							
0121 - Insurance claim	705	10,747	—	—	11,452	—	—
Total	705	10,747	—	—	11,452	—	—
<b>INCOME TOTAL</b>	<b>45,925</b>	<b>25,227</b>	<b>17,234</b>	<b>—</b>	<b>88,388</b>	<b>55,337</b>	<b>—</b>



## EXPENDITURE

### Charitable activities

0501 - Gas	1,122	124	—	—	1,246	2,621
0502 - Electricity	882	505	—	—	1,388	318
0503 - Water	374	—	—	—	374	430
0504 - Telephone	—	—	—	—	—	—
0505 - Broadband	676	—	—	—	676	732
0506 - Website	16	505	—	—	521	—
0507 - Building and Contents Insurance	1,702	—	—	—	1,702	1,542
0508 - Refurbishment and Maintenance	829	1,358	—	—	2,188	1,939
0509 - Housekeeping	107	—	—	—	107	125
0510 - Office Equipment	—	1,649	400	—	2,049	181
0511 - Stage equipment and repairs	—	—	—	—	—	2,144
0512 - Shop	92	—	—	—	92	—
0513 - Outreach	185	40	—	—	225	20
0514 - Hospitality	58	—	—	—	58	67
0515 - Giving	350	4,619	—	—	4,969	9,042
0516 - Leader Salary	—	—	—	—	—	19,335
0517 - Administrator's salary	—	6,240	—	—	6,240	6,240
0518 - Youth Worker salary	—	—	—	—	—	—
0519 - Domestic salary	—	—	—	—	—	—
0520 - Pastor expenses	—	—	—	—	—	—
0521 - Youth Worker expenses	—	—	—	—	—	—
0522 - Volunteer expenses	—	—	494	—	494	36
0524 - Tax	—	5,192	—	—	5,192	3,959
0525 - DBS checks	75	—	12	—	87	76
0526 - Training	12	—	180	—	192	290
0527 - Accountants fees	268	—	—	—	268	748
0528 - Resources	590	400	—	—	990	1,106
0529 - Food and Drink	486	310	—	—	797	380
0530 - Office Supplies	66	—	—	—	66	61
0531 - Postage	—	—	—	—	—	—
0532 - Petty Cash	—	—	—	—	—	—
0533 - Printing	179	—	—	—	179	129
0534 - Mission	—	—	—	—	—	—
0535 - Licences	460	—	—	—	460	405
0536 - Subscriptions	1,314	—	—	—	1,314	1,100
0537 - Bank charges	30	—	—	—	30	30
0538 - Retreats/Visits/Counselling	—	—	—	—	—	140
0539 - Miscellaneous	25	—	—	—	25	—
0540 - Employment and Legal Services	100	—	—	—	100	—
0541 - Business mobile	505	—	—	—	505	404
0542 - Furniture	1,978	—	—	—	1,978	12
0543 - Pension Contributions	1,383	—	—	—	1,383	1,243
0544 - Refund	—	—	—	—	—	(96)
0545 - Community Manager salary	17,444	3,272	—	—	20,716	—
0546 - Community Worker salary	—	—	3,494	—	3,494	—
<b>Total</b>	<b>31,317</b>	<b>24,218</b>	<b>4,581</b>	<b>—</b>	<b>60,117</b>	<b>54,770</b>

### Governance costs

0523 - Legal fees	—	—	—	—	—	—
<b>Total</b>	<b>—</b>	<b>—</b>	<b>—</b>	<b>—</b>	<b>—</b>	<b>—</b>
<b>EXPENDITURE TOTAL</b>	<b>31,317</b>	<b>24,218</b>	<b>4,581</b>	<b>—</b>	<b>60,117</b>	<b>54,770</b>
<b>GRAND TOTAL</b>	<b>14,608</b>	<b>1,008</b>	<b>12,653</b>	<b>—</b>	<b>28,270</b>	<b>567</b>

This report dated: 26<sup>th</sup> April 2023



Section A

Independent Examiner's Report

Report to the trustees/  
members of

Charity Name  
South Chard Church

On accounts for the year  
ended

March 31<sup>st</sup> 2023

Charity no  
(if any)

1158883

Set out on pages

1 to 2

(remember to include the page numbers of additional sheets)

I report to the trustees on my examination of the accounts of the above charity ("the Trust") for the year ended 31/03/2023.

Responsibilities and  
basis of report

As the charity's trustees, you are responsible for the preparation of the accounts in accordance with the requirements of the Charities Act 2011 ("the Act").

I report in respect of my examination of the Trust's accounts carried out under section 145 of the 2011 Act and in carrying out my examination, I have followed all the applicable Directions given by the Charity Commission under section 145(5)(b) of the Act.

Independent  
examiner's statement

I have completed my examination. I confirm that no material matters have come to my attention in connection with the examination which gives me cause to believe that in, any material respect:

- the accounting records were not kept in accordance with section 130 of the Charities Act; or
- the accounts did not accord with the accounting records; or
- the accounts did not comply with the applicable requirements concerning the form and content of accounts set out in the Charities (Accounts and Reports) Regulations 2008 other than any requirement that the accounts give a 'true and fair' view which is not a matter considered as part of an independent examination.

I have no concerns and have come across no other matters in connection with the examination to which attention should be drawn in this report in order to enable a proper understanding of the accounts to be reached.

Signed:

*G Meyers*

Date:

23/08/2023

Name:

Gregory Meyers

Relevant professional  
qualification(s) or body  
(if any):

Address:

28 Middlepeak Way, Sheffield

S13 9DL

Only complete if the examiner needs to highlight material matters of concern (see CC32, Independent examination of charity accounts: directions and guidance for examiners).

Give here brief details of any items that the examiner wishes to disclose.