

SOUTH CHARD CHURCH

England & Wales - Charity number 1158883

Details

Status Registered

Legal form CIO

Registered 2014-10-16

Register [View on the Charity Commission register](#)

Contact

Address South Chard Church
Post Office Lane
South Chard
Chard
TA20 2PN

Phone 01460 221215

Email admin@southchard.org

Website southchard.co.uk

Activities

Objects: THE OBJECT OF THE CIO IS, FOR THE PUBLIC BENEFIT, TO ADVANCE THE CHRISTIAN FAITH (IN ACCORDANCE WITH THE STATEMENT OF FAITH) IN SOUTH CHARD, SOMERSET AND SUCH OTHER PARTS OF THE UNITED KINGDOM AND THE WORLD AS THE CHARITY TRUSTEES MAY FROM TIME TO TIME DECIDE.

Activities: To live out the Christian faith in South Chard, Chard and local villages in Somerset, other parts of the UK and the world. Its services include public worship, community support services and international mission work. Our main beneficiaries are local people and those who require assistance overseas. We are financed by the giving of our local congregation.

Classification

- **How:** Provides Other Finance, Provides Services, Provides Advocacy/advice/information, Other Charitable Activities
- **What:** The Prevention Or Relief Of Poverty, Overseas Aid/famine Relief, Religious Activities
- **Who:** Children/young People, The General Public/mankind

Geography

- Uganda
- Somerset

Finances

Period end	Income	Expenditure	Assets	Employees
2025-03-31	£49,248	£55,157	-	-
2024-03-31	£54,742	£68,918	-	-
2023-03-31	£88,388	£60,117	-	-
2022-03-31	£55,337	£54,770	-	-
2021-03-31	£62,361	£63,884	-	-

Trustees

Name	Role	Appointed
Mark Andrew Thompson	Chair	2021-04-01
Gillian Grace Bough		2022-06-29
JENNIFER GRACE REID		2022-06-29

SOUTH CHARD CHURCH

England & Wales - Charity number 1158883

Accounts



ANNUAL REPORT

2024 - 2025

Charity number: 1158883

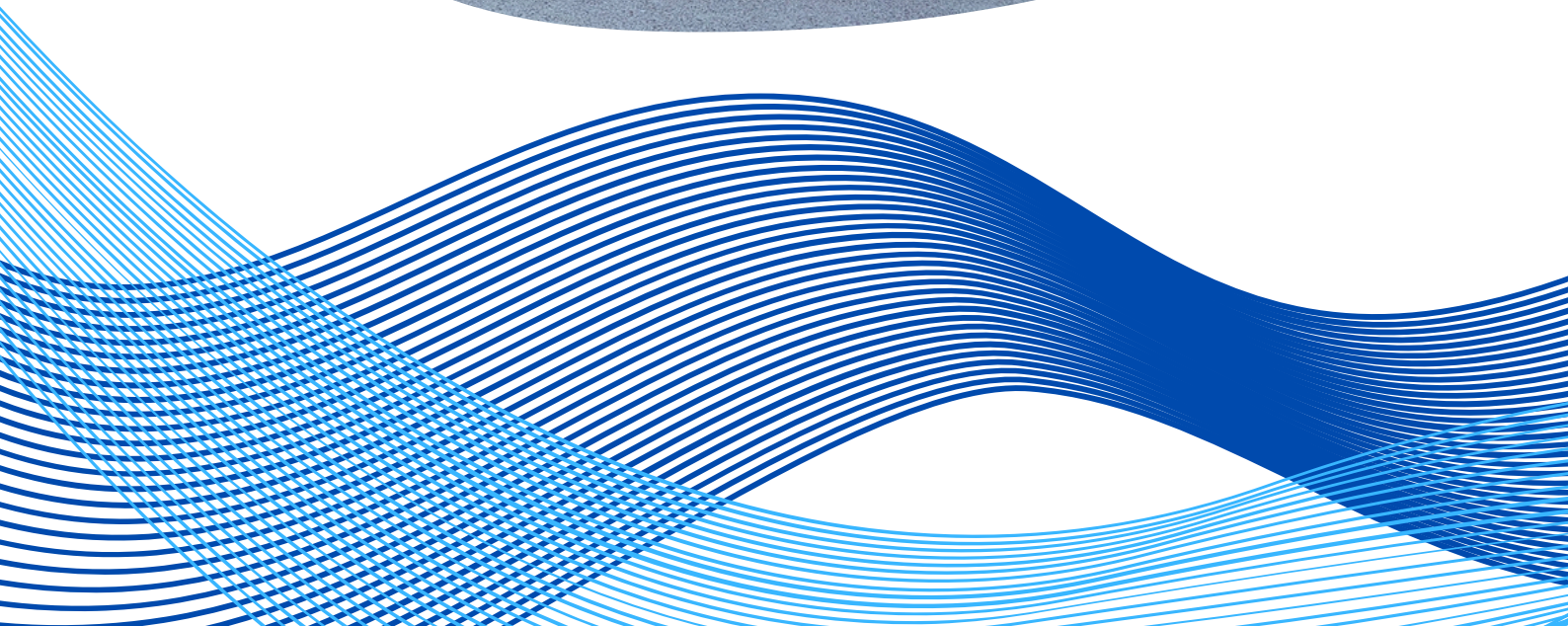
Introduction

This marks the tenth annual report from the Trustee Board of South Chard Church CIO, which was formally registered in October 2014.

Over the past year, we've seen our work continue to shift gently—from structured programmes toward something more responsive and relational. We're doing less that's formal, but perhaps more that's meaningful. The legacy of our former Community Worker is still deeply felt; what began as a defined role has now become part of the church's shared rhythm, woven into daily life and carried by many hands. Under the continued guidance of our Community Manager—and through the love and faithfulness of our church family—we've kept showing up, kept listening, and kept learning to care well in the places we're most needed.

The board currently consists of three trustees, who meet regularly and hold an annual AGM.

We remain affiliated with Churches in Communities International, who continue to offer their wisdom and support when needed. We also enjoy ongoing partnership with Churches Together in Chard (part of Churches Together in England) and look forward to deepening those relationships in the coming year.



Life Together

This year at South Chard Church, we've become even more rooted in the understanding that church isn't something we go to or something we do—it's who we are, wherever we are. The line between "church life" and "community life" doesn't really hold anymore. Whether we're praying together on a Sunday morning, delivering food to a doorstep, chatting over coffee, or walking with someone through a hard season—it's all church. It's all worship. It's all part of the life we're building with God and with one another.

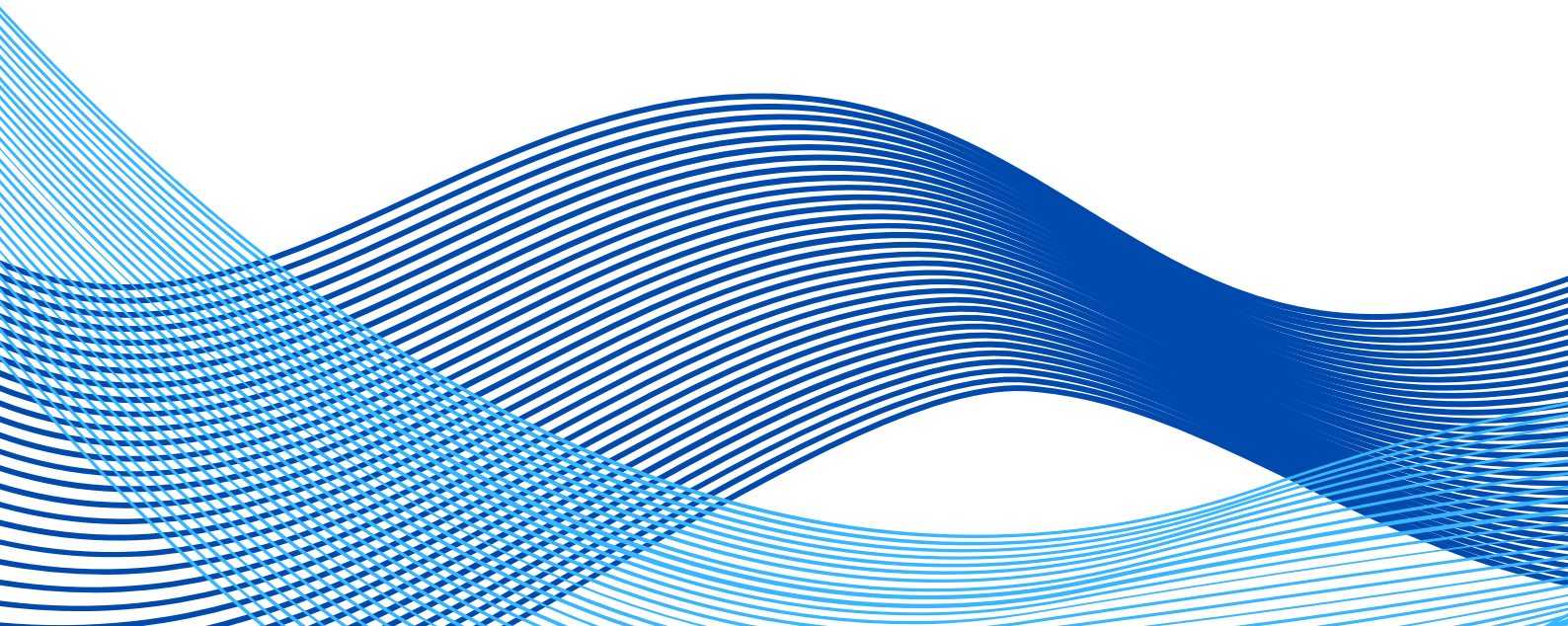
In the pages that follow, you'll see that life expressed in many different ways: gathered and scattered, planned and spontaneous, practical and prayerful. From mentoring young people over milkshakes, to welcoming children into the centre of our Sunday worship; from walking alongside those facing hardship, to sharing food, questions, and scripture in homes—each moment is part of a bigger picture.

We are learning to live as a body, where every part matters and every contribution counts. Whether it's a quiet conversation, a bold prayer, a shared meal, or a helping hand, we believe these simple acts, offered in love, are how God's kingdom takes root among us. This is our life together—and we're grateful for every step of it.

Shared Worship

Every Sunday, we gather in a relaxed and welcoming way, continuing to walk the unfolding path of faith without needing to force or fabricate anything. We've come to trust that God is present without us having to push, and that His Spirit moves in ways we don't always expect.

Our times together are open and spacious, with room for people to share what they're hearing, seeing, or sensing—believing that each person's experience of God can teach us something. In worship and in silence, in conversation and in prayer, we are learning to listen—to God and to one another.



Whole Church, Whole Family

We're learning what it means to be a church family where everyone belongs—children included. Recently, we changed how we meet on Sundays to reflect that.

Instead of sending children out or placing them on the sidelines, we begin our time together with them at the centre, exploring who Jesus is in ways that help all of us learn, laugh, and grow. As the morning continues, they stay with us—often moving into craft or creative activities, but always as part of the same gathering.

We believe that children are not just welcome in church; they are the church. Their voices, questions, and joy matter deeply, and we're building a community where they know they truly belong.



Journeying Together

Growth for us doesn't come through programmes or pressure, but through sharing life with one another. We regularly eat together as a church, with everyone pitching in—bringing food, stories, and a sense of family.

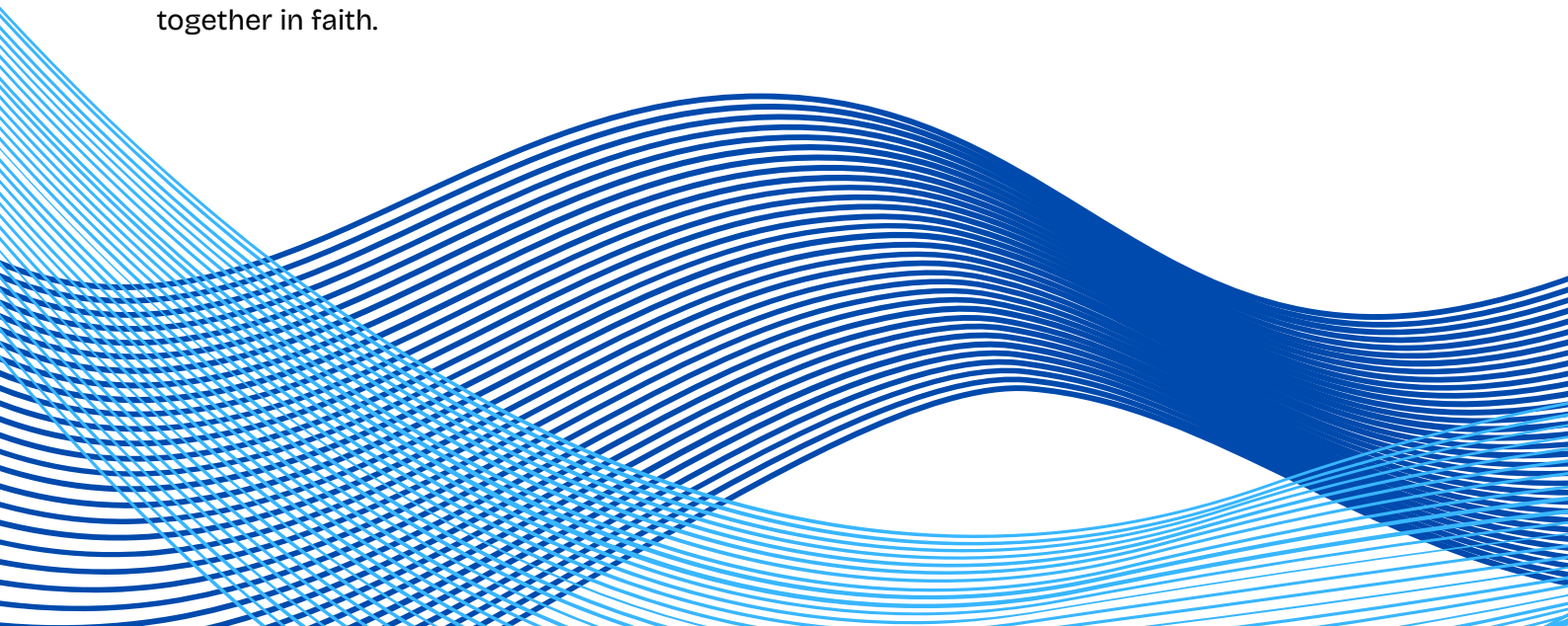
We gather in homes to explore questions about faith, often without clear answers, but with a shared desire to learn and seek God together. Bible studies, walks, beach trips, and spontaneous chats have all become part of how we grow—holding space for wonder, doubt, joy, and discovery. We're learning that growing in faith isn't about having it all sorted, but about walking the journey together with honesty, openness, and God at the centre.

Learning His Way

Our desire to grow as disciples of Jesus continues to shape the rhythm of our shared life. Each week we gather for prayer without an agenda, simply to wait on God, listen, and pray in response to what He reveals.

Bible studies take place in various homes, where people come together around scripture to explore, question, and encourage one another. We also take care to notice and gather the things we sense God is speaking to us as a community—capturing themes, words, and insights shared on Sundays so we can reflect on them together over time.

Growth for us isn't about certainty or speed, but about staying open to the Spirit and walking together in faith.



Rooted in Community

Our weekly Wednesday coffee mornings around tea, cake, and conversation have become so much more than a social –they're one of the clearest ways we've seen God's love at work in simple connection.



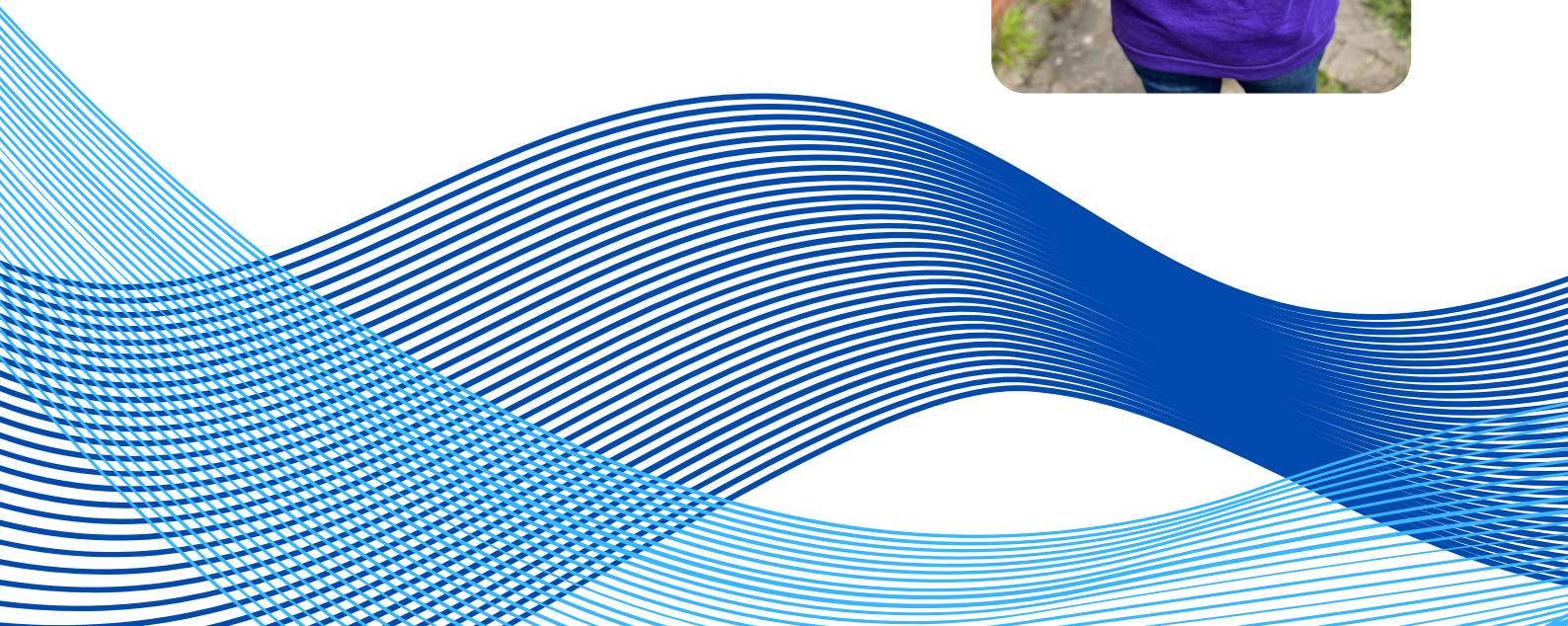
These times bring people of all ages together in a relaxed and welcoming space, where stories are shared and friendships form naturally. It's not just about having a chat—it's about building a community where people feel safe to speak, ask for help, and be known. We often see people connected into deeper support through these gentle encounters.

In a world that can feel hurried and disconnected, this is one of the places where we slow down, see each other properly, and let belonging take root.

Good Works

In partnership with Chard Churches Together, our Good Works Youth Team continues to walk alongside secondary school students who are finding things tough in mainstream education. In close collaboration with the local school, we take young people out during the school day for a milkshake or frappe and a friendly chat.

These simple, relaxed moments create space for mentoring, listening, and encouragement—offering them a sense of safety, value, and care. It's a small thing that often means a great deal, reminding each young person that they matter and they're not alone.



Tatworth Tots

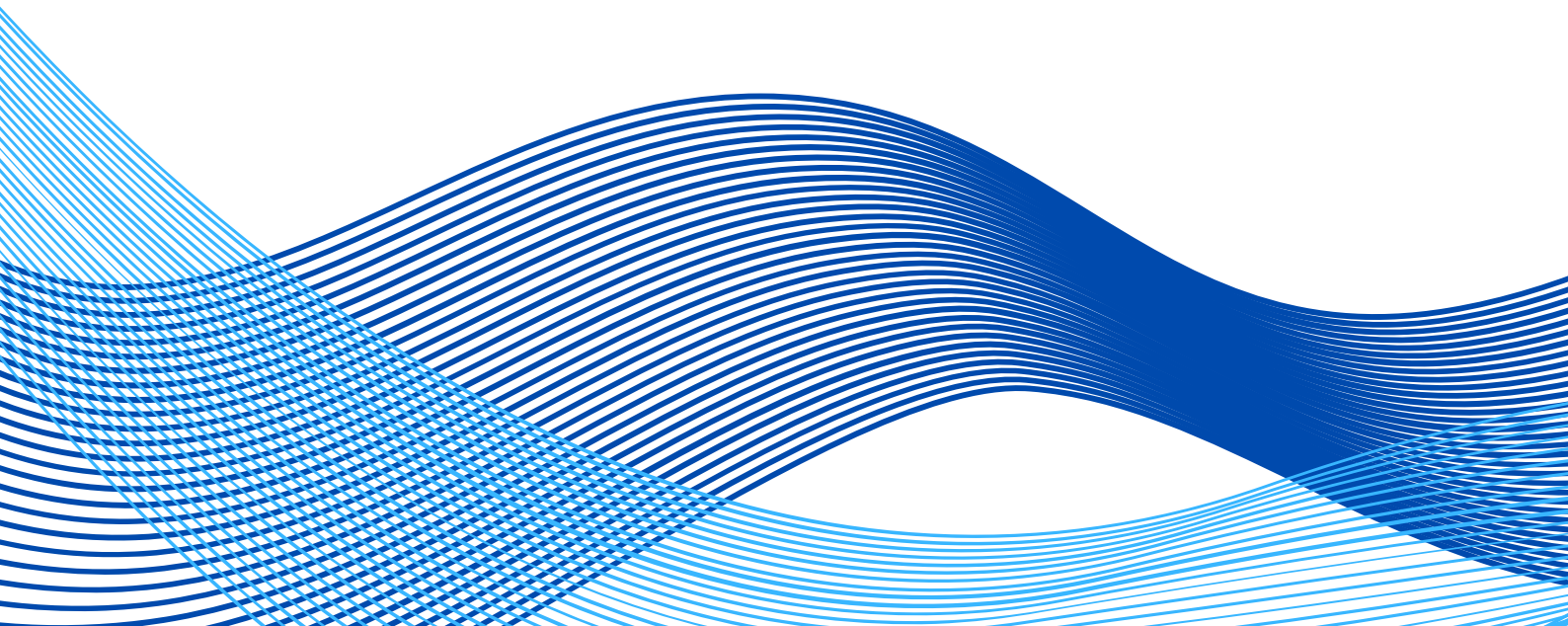
Each week at our parent and toddler sessions, the team works hard to create a warm, welcoming space where families feel safe, seen, and supported. It's a place where parents can catch their breath, share openly, and connect with others on the journey of raising little ones.



Music is woven throughout the sessions, helping children learn through singing, clapping, movement, and actions. These playful activities support language development, coordination, and social interaction—all while having fun.



Alongside the songs and play, our team gently keeps an eye out for families who may need extra support, offering a listening ear and linking them with practical help where needed. It's a space filled with laughter, care, and community—all rooted in love.



Showing up with love

Our personal support continues to reflect our belief that every person is made in the image of God and worthy of dignity, compassion, and care. We walk alongside individuals, families, and small groups facing a wide range of challenges, offering practical help, a listening ear, and a steady, prayerful presence.

This year, that's meant everything from supporting parents in school meetings, to helping with shopping, forms, and parenting advice. We've accompanied individuals to the gym to encourage physical and mental wellbeing and offered safe shelter when it was needed.

Each situation is different, and we do our best to respond with love, humility, and creativity—meeting people where they are, and gently reflecting the hope and kindness of Jesus in the everyday.

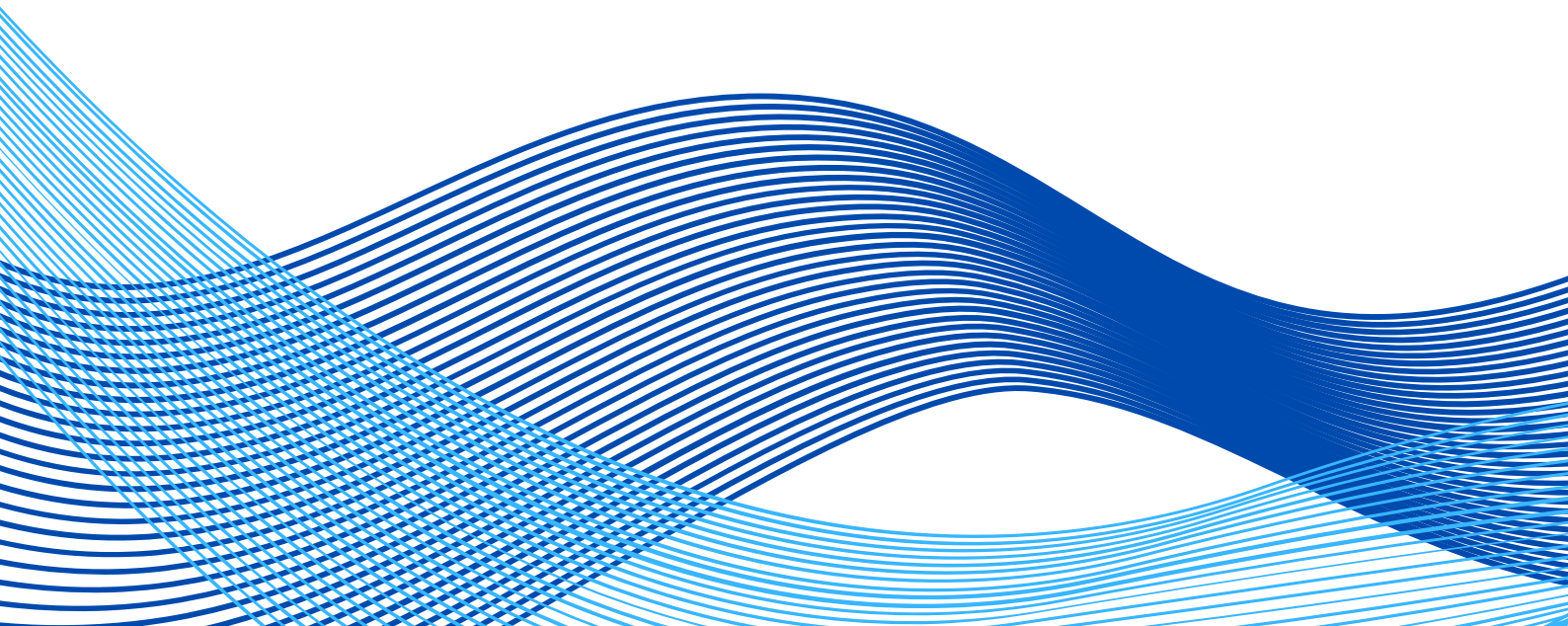
Practical Support

Caring for those in need remains a core part of our life as a church. Through the Love Chard fund—generously supported by individual donations—we're able to respond to urgent needs that fall outside the reach of our partner organisations.

Whether it's supermarket vouchers, essential household items, or something more specific, this fund allows us to offer practical help at just the right moment.

We continue to work closely with Chard Community Hub and Lord's Larder to ensure food reaches those who need it most, distributing regular donations from local supermarkets.

We're deeply thankful for the collaboration between local charities, agencies, and volunteers, especially during Christmas when we joined forces to wrap and deliver hundreds of toys to families across the area—an effort made possible by the generosity of individuals and local businesses, and carried by the love of our amazing volunteer team.



Making Space for the Community

Although our building is currently undergoing renovation—and we're still waiting on God for the provision needed to complete it—it's been encouraging to see the parts of it that are usable still serving the community.

We've been glad to offer the space for Christian training events, as well as free or low-cost children's parties, making it accessible for families who might not otherwise be able to celebrate.

Over Christmas, we hosted the town's Christmas Present Appeal, providing a place for hundreds of donated gifts to be sorted and stored. We also made room for the Shoebox Appeal, allowing that expression of care to continue even while the building is far from finished.

It's not the season we expected—but it's good to know the space we *do* have is still being used to bless others.



Holiday Club

This summer, our volunteers and Community Manager joined with the wider Chard Churches Together team to run the annual Holiday Club—five packed days of fun, faith, and community for over 70 children.

Hosted at the local high school and completely free to attend, the club included lunch each day and a wide range of activities built around this year's theme: *Blast Off!*

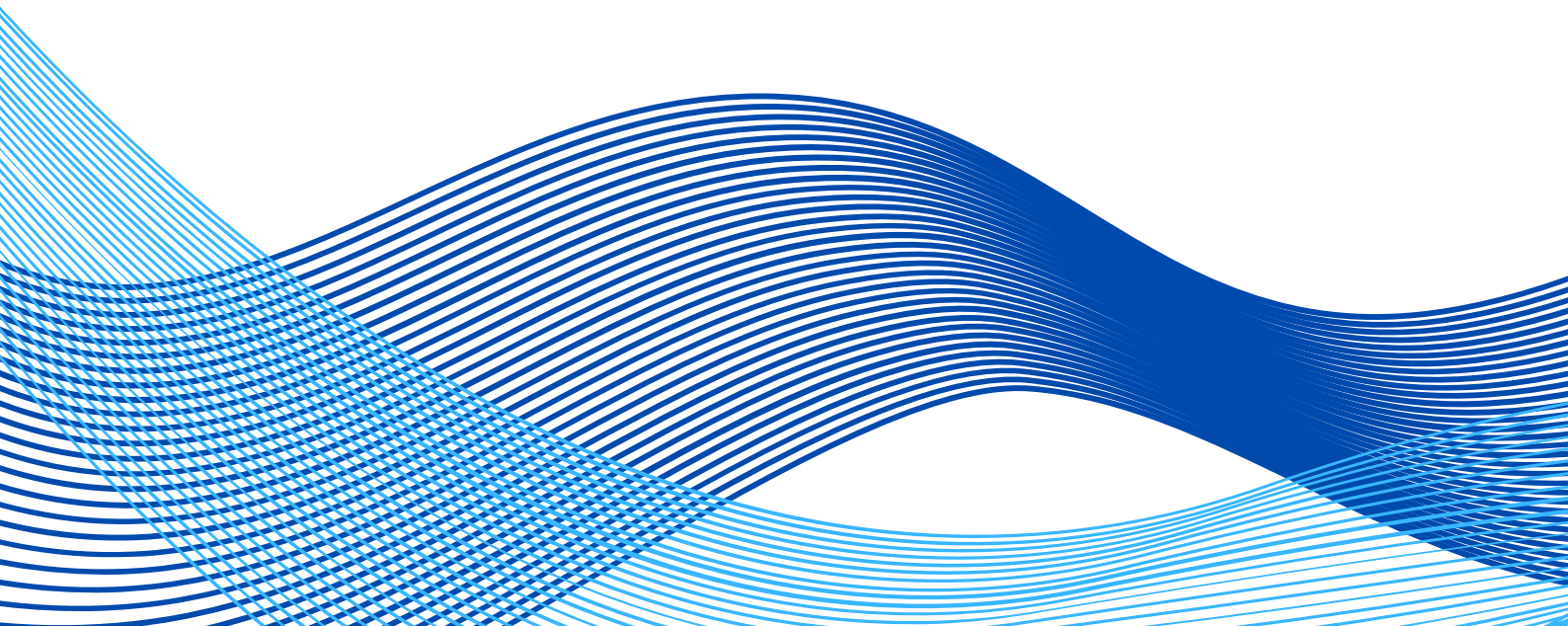
With a space-themed adventure, children explored big ideas, engaged in lively games, creative crafts, music, and storytelling. It was joyful, a little bit wild, and full of moments where faith and friendship grew side by side. Our team played key roles—leading groups, sharing music, and helping to create a welcoming, hope-filled space where children could laugh, learn, and encounter God in a safe and vibrant environment.

Bottled Up

This year, instead of running a formal programme, we found ourselves offering something simpler—but no less valuable: space. With funding from Open Mental Health, we were able to connect a number of individuals with professional counselling, giving them access to skilled support they might not otherwise have been able to afford.

Alongside that, we offered informal spaces for conversation—safe, unhurried moments where people could talk things through, often for the first time. Some had experienced the impact of alcohol in their families; others simply needed somewhere to be heard.

It wasn't mentoring, and it wasn't therapy—but it created room for people to reflect, ask questions, and begin to understand themselves and their situations more clearly. Often, the most powerful thing we offered was presence: listening without trying to fix, and showing up with gentleness, care, and time.



Overseas Support

We continue to support Pastor Moses and the community he serves with both prayer and practical help. A team from South Chard Church has established a monthly sponsorship scheme for five children from a local orphanage, covering their education, food, and housing. In addition to this, we also provide funding for school supplies to ensure the children have what they need to thrive.

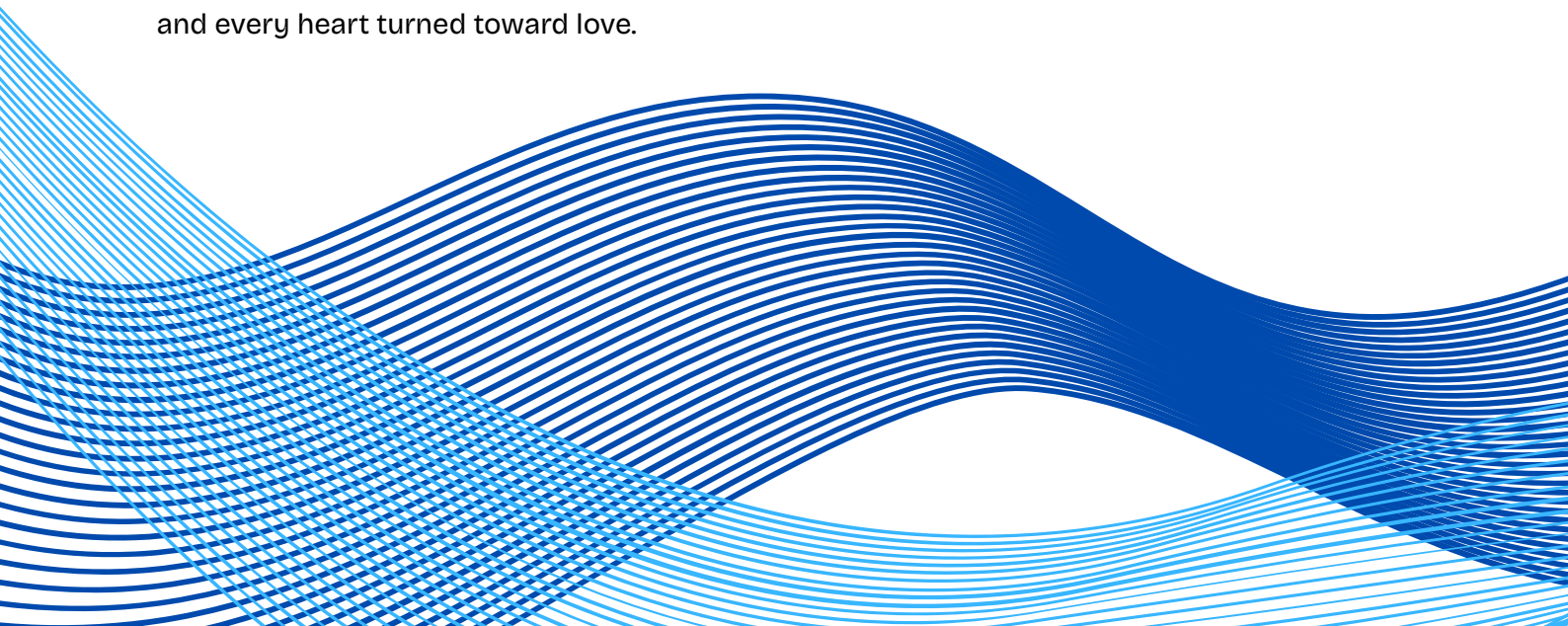
Our financial support contributes to the hire of a hall that serves as the main church building, used throughout the week for gatherings and ministry. With access to this space, Moses has been able to host conferences and respond to the needs of the wider community—providing food, emotional care, and practical support to those facing hardship.



Looking Back, Looking Forward

As we look back on this past year, we're struck by how often God has shown up in the ordinary—through shared meals, quiet prayers, unexpected conversations, and small acts of kindness. We haven't always had a clear plan, but we've learned that faithfulness doesn't always look like certainty. It often looks like showing up, listening, and being willing to move when the Spirit nudges. There have been moments of challenge—especially with the renovation delays—but even in the waiting, we've seen God's provision through people, through prayer, and through the simple grace of still being together.

We step into the year ahead with open hands, thankful for all that's grown, and expectant for what's still to come. We don't know all the answers, but we do know this: Jesus is with us, and He is building something beautiful—through every joint supplying, every voice contributing, and every heart turned toward love.



**South Chard Church
1158883**

End of Year Financial Statements

Year ending March 31st 2025

Statement of Financial Activities

	Unrestricted funds	Restricted funds	Endowment funds	Total funds	Prior year total funds
Incoming resources					
Incoming resources from generated funds	—	—	—	—	£3,158
Voluntary income	£47,155	£275	—	£47,430	£49,655
Activities for generating funds	£50	—	—	£50	£120
Incoming resources from charitable activities	£1,768	—	—	£1,768	£1,807
Other incoming resources	—	—	—	—	—
Total income	£48,973	£275	—	£49,248	£54,742
Resources used					
Charitable activities	£52,714	£2,442	—	£55,157	£68,920
Governance costs	—	—	—	—	—
Total expenditure	£52,714	£2,442	—	£55,157	£68,920
Gains / losses on investment assets	—	—	—	—	—
Net income / (expenditure) resources before transfer	(£3,740)	(£2,167)	—	(£5,908)	(£14,178)
Transfers					
Gross transfers between funds – in	£21,755	—	—	£21,755	£29,643
Gross transfers between funds – out	(£21,622)	(£132)	—	(£21,755)	(£29,643)
Net movement in funds	(£3,608)	(£2,300)	—	(£5,908)	(£14,178)
Total funds brought forward	£23,661	£2,785	—	£26,446	£40,624
Total funds carried forward	£20,052	£485	—	£20,537	£26,446
Represented by					
Unrestricted					
General fund	£78	—	—	£78	£741
Designated					
Annual Expense fund	£799	—	—	£799	£1,595
Children's Work fund	—	—	—	—	£17
Church maintenance fund	£14,269	—	—	£14,269	£14,514
Community	£125	—	—	£125	£172
Love Chard	£94	—	—	£94	£221
Men's Ministry fund	£175	—	—	£175	£177
Mission fund	£1,780	—	—	£1,780	£1,780
Prisons Work	—	—	—	—	£100
Savings	£2,000	—	—	£2,000	£3,000
Special Offering fund	£374	—	—	£374	£874
Tatworth Tots	£144	—	—	£144	£310
Tithe fund	£59	—	—	£59	£6
Youth Worker fund	£149	—	—	£149	£149
Restricted					
Bottled Up	—	£275	—	£275	£1,150
Community Worker	—	—	—	—	£1,425
Manor House Fund	—	£210	—	£210	£210

Balance sheet

	Total funds	Prior year funds
Current assets		
Cash at bank and in hand	£20,537	£26,601
	£20,537	£26,601
Liabilities		
Creditors: Amounts falling due in one year	—	£155
	—	£155
Net current assets less current liabilities	£20,537	£26,446
Total assets less current liabilities	£20,537	£26,446
Total net assets less liabilities	£20,537	£26,446
Represented by		
Unrestricted		
General fund	£78	£741
Designated		
Annual Expense fund	£799	£1,595
Love Chard	£94	£221
Church maintenance fund	£14,269	£14,514
Men's Ministry fund	£175	£177
Mission fund	£1,780	£1,780
Prisons Work	—	£100
Savings	£2,000	£3,000
Special Offering fund	£374	£874
Tithe fund	£59	£6
Tatworth Tots	£144	£310
Youth fund	£149	£149
Children's Work fund	—	£17
Community	£125	£172
Restricted		
Bottled Up	£275	£1,150
Community Worker	—	£1,425
Manor House Fund	£210	£210
Funds of the church	£20,537	£26,446

Statement of assets and liabilities

	General	Designated	Restricted	Endowment	This year	Last year
Current assets - Cash at bank and in hand						
NatWest Current -	£115	£19,974	£485	—	£20,574	£26,470
NatWest Credit -	(£36)	—	—	—	(£36)	£130
Totals	£78	£19,974	£485	—	£20,537	£26,601
Liabilities - Agency accounts						
Agency collections -	—	—	—	—	—	£155
Totals	—	—	—	—	—	£155
Grand total	£78	£19,974	£485	—	£20,537	£26,446

Analysis of income and expenditure

	<u>Unrestricted</u>	<u>Designated</u>	<u>Restricted</u>	<u>Endowment</u>	<u>Total</u>	
					<u>This year</u>	<u>Last year</u>
INCOME AND ENDOWMENTS						
Incoming resources from generated funds						
0119 - Grant	—	—	—	—	—	£3,158
Total	—	—	—	—	—	£3,158
Incoming resources from generated funds - Voluntary income						
0101 - General Offering	£6,128	—	—	—	£6,128	£8,365
0102 - Standing Orders	£25,871	—	—	—	£25,871	£29,078
0103 - Special Offering	—	£40	—	—	£40	£262
0104 - Special Gifts	£5,500	£1,890	£75	—	£7,465	£2,557
0105 - Standing Orders for Specific Purposes	—	£754	£200	—	£954	£1,177
0109 - Gift Aid	£6,971	—	—	—	£6,971	£8,214
Total	£44,471	£2,684	£275	—	£47,430	£49,655
Incoming resources from generated funds - Activities for generating funds						
0107 - Fundraising	—	—	—	—	—	£20
0110 - Building Hire	£50	—	—	—	£50	£100
Total	£50	—	—	—	£50	£120
Incoming resources from charitable activities						
0106 - Kids & Co	—	£551	—	—	£551	£746
0111 - Shop	—	—	—	—	—	£40
0114 - Men's Ministry	—	£16	—	—	£16	£419
0116 - Repayment	£999	—	—	—	£999	£50
0120 - Car Scheme	—	—	—	—	—	£438
0122 - Donations	£200	—	—	—	£200	£112
Total	£1,199	£568	—	—	£1,768	£1,807
INCOME TOTAL	£45,721	£3,252	£275	—	£49,248	£54,742

EXPENDITURE

Charitable activities

0501 - Gas	£1,562	—	—	—	£1,562	£1,971
0502 - Electricity	£1,379	—	—	—	£1,379	£1,469
0503 - Water	£565	—	—	—	£565	£623
0504 - Telephone	—	—	—	—	—	£10
0505 - Broadband	£1,546	—	—	—	£1,546	£724
0506 - Website	£645	—	—	—	£645	£342
0507 - Building and Contents Insurance	£2,378	—	—	—	£2,378	£2,299
0508 - Refurbishment and Maintenance	—	£345	—	—	£345	£1,103
0509 - Housekeeping	£559	—	—	—	£559	£2,024
0510 - Office Equipment	—	—	—	—	—	£64
0511 - Stage equipment and repairs	£30	£300	—	—	£330	—
0512 - Shop	—	—	—	—	—	£37
0513 - Outreach	—	—	—	—	—	£200
0514 - Hospitality	£174	—	—	—	£174	£83
0515 - Giving	£919	£4,293	—	—	£5,212	£5,311
0517 - Administrator's salary	—	£7,138	—	—	£7,138	£6,502
0519 - Domestic salary	£1,388	—	—	—	£1,388	—
0522 - Volunteer expenses	—	—	—	—	—	£995
0524 - Tax	—	£4,053	—	—	£4,053	£6,508
0525 - DBS checks	£13	—	—	—	£13	£62
0527 - Accountants fees	£732	—	—	—	£732	£627
0528 - Resources	£458	£28	—	—	£487	£741
0529 - Food and Drink	£367	£231	—	—	£599	£1,182
0530 - Office Supplies	£30	—	—	—	£30	£2
0533 - Printing	£308	—	—	—	£308	£151
0535 - Licences	£336	—	—	—	£336	£439
0536 - Subscriptions	£818	—	—	—	£818	£1,640
0537 - Bank charges	£30	—	—	—	£30	£30
0538 - Retreats/Visits/Counselling	—	—	£1,150	—	£1,150	£1,140
0541 - Business mobile	£695	—	—	—	£695	£559
0543 - Pension Contributions	£1,288	—	—	—	£1,288	£1,699
0544 - Refund	—	—	—	—	—	(£541)
0545 - Community Manager salary	£20,091	—	—	—	£20,091	£19,691
0546 - Community Worker salary	—	—	£1,292	—	£1,292	£11,219
Total	£36,323	£16,391	£2,442	—	£55,157	£68,920

Governance costs

0523 - Legal fees	—	—	—	—	—	—
Total	—	—	—	—	—	—

EXPENDITURE TOTAL	£36,323	£16,391	£2,442	—	£55,157	£68,920
--------------------------	----------------	----------------	---------------	----------	----------------	----------------

GRAND TOTAL	£9,398	(£13,139)	(£2,167)	—	(£5,908)	(£14,178)
--------------------	---------------	------------------	-----------------	----------	-----------------	------------------

This report dated: 30th April 2025



Section A

Independent Examiner's Report

**Report to the trustees/
members of**

Charity Name
South Chard Church

**On accounts for the year
ended**

March 2025

**Charity no
(if any)**

1158883

Set out on pages

1 to 2

(remember to include the page numbers of additional sheets)

I report to the trustees on my examination of the accounts of the above charity ("the Trust") for the year ended 31/03/2025.

**Responsibilities and
basis of report**

As the charity's trustees, you are responsible for the preparation of the accounts in accordance with the requirements of the Charities Act 2011 ("the Act").

I report in respect of my examination of the Trust's accounts carried out under section 145 of the 2011 Act and in carrying out my examination, I have followed all the applicable Directions given by the Charity Commission under section 145(5)(b) of the Act.

**Independent
examiner's statement**

I have completed my examination. I confirm that no material matters have come to my attention in connection with the examination which gives me cause to believe that in, any material respect:

- the accounting records were not kept in accordance with section 130 of the Charities Act; or
- the accounts did not accord with the accounting records; or
- the accounts did not comply with the applicable requirements concerning the form and content of accounts set out in the Charities (Accounts and Reports) Regulations 2008 other than any requirement that the accounts give a 'true and fair' view which is not a matter considered as part of an independent examination.

I have no concerns and have come across no other matters in connection with the examination to which attention should be drawn in this report in order to enable a proper understanding of the accounts to be reached.

Signed:

G Meyers

Date:

28/09/2025

Name:

Dr Gregory Meyers

**Relevant professional
qualification(s) or body
(if any):**

Address:

28 Middlepeak Way, Sheffield

S13 9DL

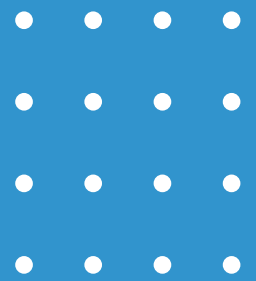
Only complete if the examiner needs to highlight material matters of concern (see CC32, Independent examination of charity accounts: directions and guidance for examiners).

Give here brief details of any items that the examiner wishes to disclose.

SOUTH CHARD CHURCH

England & Wales - Charity number 1158883

Accounts



2023/2024

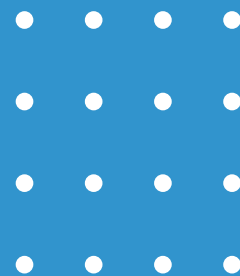
ANNUAL REPORT

Charity number 1158883



South
Chard
CHURCH





South Chard Church

This is the ninth annual report from the Trustee board at South Chard Church CIO which was formally registered in October 2014.

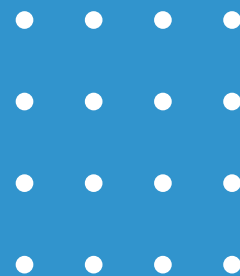
Since our previous annual review, the church has continued to be a source of support to our local community. Initiatives have been consolidated and built upon to ensure they best meet the needs of the people we are connected with. Our Community Manager and Community Worker have led a team of volunteers to provide practical, emotional and spiritual support to the people we encounter. All members of our church are encouraged to learn from one another, offer pastoral support to each other and play their part within the community.

We continue to have four trustees on the board, who meet on a regular basis and hold an annual AGM.

South Chard Church continues to be affiliated with Churches in Communities International, who are on standby to offer any support or advice should we require it. We also continue to work with Churches Together in Chard (part of Churches Together In England) and look forward to furthering our relationship with them in the coming year.

Community Life

This year we have continued to build on the success of The Hub at South Chard Church. This initiative is designed to engage our resources and volunteers in various programmes that support community life.



“Every child is unique therefore their education should be also.”

Good Works

In collaboration with Chard Churches Together, our Good Works Team is dedicated to supporting secondary school students who face challenges in mainstream education. We provide weekly sessions that focus on teaching essential cooking skills and offering personalised mentoring. Through these programs, we aim to equip young people with practical abilities and emotional support, fostering their personal development and enhancing their future opportunities. This partnership exemplifies our commitment to making a positive impact in the community and empowering the next generation to succeed.

Coffee Mornings

Our weekly coffee mornings serve as a vibrant hub of community engagement, offering more than just a caffeine fix. With an abundance of cake and hearty laughter, these gatherings become a cherished time of shared stories and connection.



Spanning generations, they provide a unique opportunity for intergenerational interaction, promoting understanding and empathy across age groups. Beyond the joyous atmosphere, our coffee mornings serve a practical purpose as well, functioning as a trusted space where individuals can seek guidance and be directed to various services as needed, embodying our commitment to holistic support within our community.



Provisions

We continue to work with our partners to provide food where it is most needed. Collaborating closely with Chard Community Hub and our local food bank, Lord’s Larder, we distribute donations from local supermarkets to the community. We deeply value the coordinated efforts of our local charities and agencies to ensure no one goes hungry.

During Christmas, we joined forces to distribute hundreds of children's toys to local families. With generous donations from individuals and businesses, a dedicated team of volunteers came together to wrap and deliver the presents.

In the spirit of spreading joy during Easter, we, along with our partners, distributed Easter eggs donated by supermarkets to families on low incomes. This initiative brought smiles to many children and provided a special treat during the holiday season.

We also maintain a small fund called "Love Chard," supported by individual donations. This fund helps us address needs that cannot be met through our partners, providing supermarket vouchers or essential household items for those in urgent need.



Children and Young People

In partnership with Chard Churches Together, we organised an event at the local skate park featuring a double-decker bus with activities, a BBQ, and music to celebrate the young people in our town and affirm their value. Additionally, we take children on nature walks, which offer numerous benefits including physical exercise, a connection to the environment, and opportunities for mindfulness and stress relief. In the summer our team and volunteers joined the Holiday Club crew and spent the week being pirates (the theme of the club) with over 70 children, which was lots of fun.

We also work one to one with young people, for example, we collaborated with another agency to provide a young man, who did not complete school, regular opportunities to learn practical skills such as painting and gardening. These initiatives are designed to create a sense of community, promote personal growth, and equip young individuals with valuable life skills.





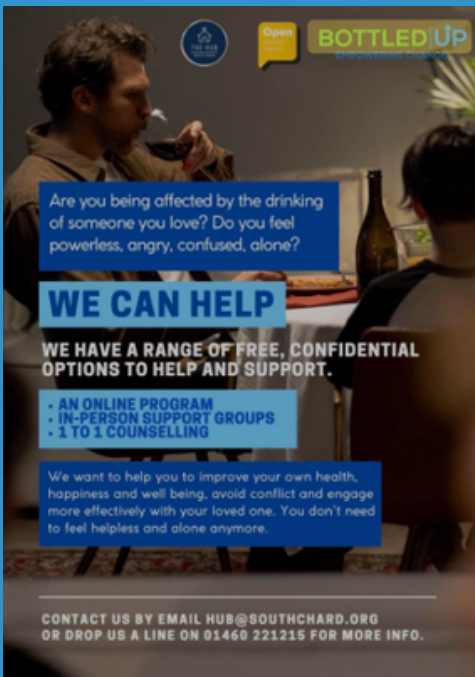
Healthy Living

We ran a weekly healthy living group, offering a welcoming space for participants to share challenges and ideas related to healthy living. The group provided practical food ideas and included a healthy meal, typically lunch, to demonstrate nutritious eating habits.

Additionally, we organised walks to encourage physical activity and foster a sense of community. These sessions aimed to support and inspire individuals to adopt and maintain healthier lifestyles.



Bottled up



We are excited to announce the launch of "Bottled Up," a program offering crucial support for drinkers and their family members. This initiative has already made a positive impact, helping several individuals reassess their drinking habits through targeted guidance and support. Additionally, thanks to a fund provided by Open Mental Health, adult family members of alcoholics now have access to much-needed counselling services. This support helps them address their own behavioural patterns, which are not always beneficial, fostering healthier family dynamics. This comprehensive approach aims to promote healthier lifestyles and strengthen family relationships, providing a valuable resource for our community.

Bereavement Support Group

We facilitated a peer support group focused on bereavement, creating a compassionate space for individuals to share their experiences and support each other through their grief. Each session included a cooked lunch, providing not only nourishment but also an opportunity for participants to connect over a comforting meal. This combination of peer support and communal dining created a sense of belonging and understanding among those navigating the challenging journey of loss.

Tatworth Tots

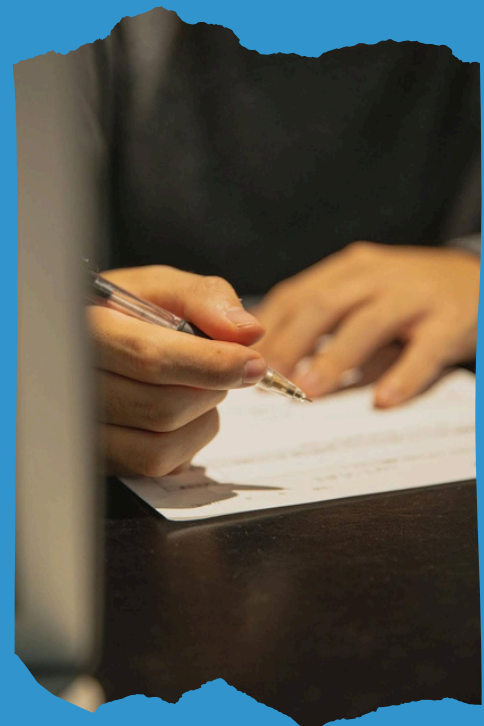


In our weekly parent and toddler session, the entire team works diligently to create a safe and nurturing environment where families can come together. Parents appreciate the opportunity to connect and share their challenges, feeling supported by the collective efforts of our dedicated volunteers. Gill, our musical genius, brings a personalised touch, singing each child's name in a warm greeting, adding an extra layer of familiarity and joy to the atmosphere.

This sense of community and support is integral to our sessions, where families can find solace and encouragement amidst the shared journey of parenthood. Our Tots team actively seeks out families who may require extra assistance, connecting them with resources such as financial support and emotional assistance.

One-to-one Support

We offered bespoke one-to-one support, tailored to help individuals navigate various challenges in their lives. Our dedicated team assisted people in accessing services, communicating with professionals, and filling in necessary forms. We assisted individuals facing financial challenges by facilitating access to support services, providing guidance on dealing with bailiffs, and connecting them with agencies specialised in addressing domestic abuse. We also provided guidance to help them unpack and understand their thoughts around the issues they were facing.



Additionally, we supported them with practical tasks such as grocery shopping and provided advice on positive parenting techniques. This personalised approach ensured that each individual received the specific support they needed to improve their overall well-being and achieve their goals.

• • • •
• • • •
• • • •
• • • •

Church Life

We value the community of faith we have around us and make every effort to invest in connection in our common goal to worship God, our creator and to show His love.



Sunday Morning Gatherings

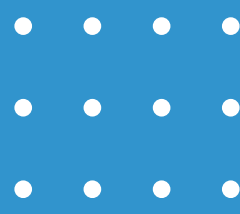
Every Sunday, our church congregation gathers in a relaxed and familial manner, inviting the presence of the Holy Spirit and acknowledging the guidance of God in our midst. We maintain an open space where everyone is invited to share their thoughts and experiences, recognizing the diversity of our spiritual journeys and the ways in which God works in each of our lives. Through our shared worship and fellowship, we seek to deepen our connection to God and to one another, knowing that we are all part of a larger spiritual family.



Growing Together

In keeping with our guiding principles, we encourage and facilitate the initiation of group gatherings and other social events where individuals see fit. We've observed the organic growth of various activities such as impromptu Bible studies, discussion groups, prayer meetings, and one-on-one discipleship sessions, occurring both within homes and at our church premises. It's truly uplifting to repeatedly acknowledge the unique contributions of each individual, and we delight in witnessing this principle in action.





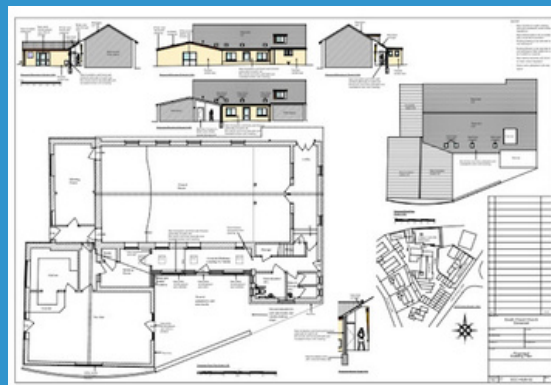
Overseas Support

We continue to support Pastor Moses. A team of volunteers from South Chard Church have set up a scheme whereby we sponsor five children from an orphanage, on a monthly basis. This sponsorship pays for each child's educational needs, food, and housing. Furthermore we also assist financially with the hire of a hall which is used as their main church premises, holding meetings and clubs during the week and services at the weekend.



Building development

Since our last annual review, we've made progress in our endeavour to establish a community space/drop-in centre within one of our buildings. We're pleased to announce that we have obtained planning permission, marking a significant milestone in this project. Currently, the room has been fully cleared, and the old kitchen and fittings have been removed, marking the beginning of the renovation process.



**South Chard Church
1158883**

End of Year Financial Statements

Year ending March 2024

Statement of Financial Activities

	Unrestricted funds	Restricted funds	Endowment funds	Total funds	Prior year total funds
Incoming resources					
Incoming resources from generated funds	£158	£3,000	—	£3,158	£25,558
Voluntary income	£49,655	—	—	£49,655	£49,117
Activities for generating funds	£120	—	—	£120	£12
Incoming resources from charitable activities	£1,369	£438	—	£1,807	£2,247
Other incoming resources	—	—	—	—	£11,452
Total income	£51,304	£3,438	—	£54,742	£88,388
Resources used					
Charitable activities	£55,787	£13,131	—	£68,918	£60,117
Governance costs	—	—	—	—	—
Total expenditure	£55,787	£13,131	—	£68,918	£60,117
Gains / losses on investment assets	—	—	—	—	—
Net income / (expenditure) resources before transfer	(£4,483)	(£9,692)	—	(£14,176)	£28,270
Transfers					
Gross transfers between funds - in	£26,869	£2,773	—	£29,643	£27,424
Gross transfers between funds - out	(£25,419)	(£4,223)	—	(£29,643)	(£27,424)
Other recognised gains / losses					
Gains on revaluation, fixed assets, charity's own use	—	—	—	—	—
Net movement in funds	(£3,032)	(£11,143)	—	(£14,176)	£28,270
Total funds brought forward	£26,695	£13,928	—	£40,624	£12,353
Total funds carried forward	£23,663	£2,785	—	£26,448	£40,624
Represented by					
Unrestricted					
General fund	£743	—	—	£743	£2,187
Designated					
Administrator fund	—	—	—	—	—
Annual Expense fund	£1,595	—	—	£1,595	£1,251
CAP fund	—	—	—	—	—
Children's Work fund	£17	—	—	£17	£17
Church Weekend fund	—	—	—	—	—
Church maintenance fund	£14,514	—	—	£14,514	£14,287
Community	£172	—	—	£172	£1,161
Kids Matter	—	—	—	—	—
Love Chard	£221	—	—	£221	£397
Men's Ministry fund	£177	—	—	£177	£71
Mission fund	£1,780	—	—	£1,780	£760
Prisons Work	£100	—	—	£100	£100
Savings	£3,000	—	—	£3,000	£5,000
Special Offering fund	£874	—	—	£874	£574
Tatworth Tots	£310	—	—	£310	£377
Tithe fund	£6	—	—	£6	£99
Uganda	—	—	—	—	£60
Youth Worker fund	£149	—	—	£149	£349
Restricted					
Bottled Up	—	£1,150	—	£1,150	£2,000
Car Scheme	—	—	—	—	£1,086
Community Worker	—	£1,425	—	£1,425	£10,632
Manor House Fund	—	£210	—	£210	£210

Balance sheet

	Total funds	Prior year funds
Current assets		
Cash at bank and in hand	£26,603	£40,899
	£26,603	£40,899
Liabilities		
Creditors: Amounts falling due in one year	£155	£275
	£155	£275
Net current assets less current liabilities	£26,448	£40,624
Total assets less current liabilities	£26,448	£40,624
Total net assets less liabilities	£26,448	£40,624
Represented by		
Unrestricted		
General fund	£743	£2,187
Designated		
Annual Expense fund	£1,595	£1,251
Love Chard	£221	£397
Church maintenance fund	£14,514	£14,287
Men's Ministry fund	£177	£71
Mission fund	£1,780	£760
Prisons Work	£100	£100
Savings	£3,000	£5,000
Special Offering fund	£874	£574
Tithe fund	£6	£99
Tatworth Tots	£310	£377
Administrator fund	—	—
Uganda	—	£60
Church Weekend fund	—	—
Youth Worker fund	£149	£349
CAP fund	—	—
Children's Work fund	£17	£17
Community	£172	£1,161
Kids Matter	—	—
Restricted		
Bottled Up	£1,150	£2,000
Community Worker	£1,425	£10,632
Car Scheme	—	£1,086
Manor House Fund	£210	£210
Funds of the church	£26,448	£40,624

Statement of assets and liabilities

	General	Designated	Restricted	Endowment	This year	Last year
Current assets - Cash at bank and in hand						
NatWest Current -	£610	£22,919	£2,940	—	£26,470	£40,972
NatWest Credit -	£132	—	—	—	£132	(£72)
Totals	£743	£22,919	£2,940	—	£26,603	£40,899
Liabilities - Agency accounts						
Agency collections -	—	—	£155	—	£155	£275
Totals	—	—	£155	—	£155	£275
Grand total	£743	£22,919	£2,785	—	£26,448	£40,624

Analysis of income and expenditure

	<u>Unrestricted</u>	<u>Designated</u>	<u>Restricted</u>	<u>Endowment</u>	<u>Total</u>	
					<u>This year</u>	<u>Last year</u>
INCOME AND ENDOWMENTS						
Incoming resources from generated funds						
0108 - Bank Interest	—	—	—	—	—	—
0119 - Grant	£158	—	£3,000	—	£3,158	£25,558
Total	£158	—	£3,000	—	£3,158	£25,558
Incoming resources from generated funds - Voluntary income						
0101 - General Offering	£8,365	—	—	—	£8,365	£8,932
0102 - Standing Orders	£29,078	—	—	—	£29,078	£26,362
0103 - Special Offering	—	£262	—	—	£262	£575
0104 - Special Gifts	£200	£2,357	—	—	£2,557	£4,067
0105 - S/O for Specific Purposes	—	£1,177	—	—	£1,177	£2,199
0109 - Gift Aid	£8,214	—	—	—	£8,214	£6,981
0118 - Children's Offering	—	—	—	—	—	—
Total	£45,859	£3,796	—	—	£49,655	£49,117
Incoming resources from generated funds - Activities for generating funds						
0107 - Fundraising	£20	—	—	—	£20	£12
0110 - Building Hire	£100	—	—	—	£100	—
Total	£120	—	—	—	£120	£12
Incoming resources from charitable activities						
0106 - Kids & Co	—	£746	—	—	£746	£606
0111 - Shop	£40	—	—	—	£40	£74
0112 - Conference registration	—	—	—	—	—	—
0113 - Miscellaneous	—	—	—	—	—	—
0114 - Men's Ministry	—	£419	—	—	£419	£200
0115 - Church Weekend payment	—	—	—	—	—	—
0116 - Repayment	£50	—	—	—	£50	£130
0117 - SCSM	—	—	—	—	—	—
0120 - Car Scheme	—	—	£438	—	£438	£1,234
0122 - Donations	£112	—	—	—	£112	—
Total	£202	£1,166	£438	—	£1,807	£2,247
Other incoming resources						
0121 - Insurance claim	—	—	—	—	—	£11,452
Total	—	—	—	—	—	£11,452
INCOME TOTAL	£46,341	£4,963	£3,438	—	£54,742	£88,388

	<u>Unrestricted</u>	<u>Designated</u>	<u>Restricted</u>	<u>Endowment</u>	<u>Total</u>	<u>This year</u>	<u>Last year</u>
--	---------------------	-------------------	-------------------	------------------	--------------	------------------	------------------

EXPENDITURE

Charitable activities

0501 - Gas	£1,971	—	—	—	£1,971	£1,246
0502 - Electricity	£1,469	—	—	—	£1,469	£1,388
0503 - Water	£623	—	—	—	£623	£374
0504 - Telephone	£10	—	—	—	£10	—
0505 - Broadband	£724	—	—	—	£724	£676
0506 - Website	£342	—	—	—	£342	£521
0507 - Building & Contents Insurance	£2,299	—	—	—	£2,299	£1,702
0508 - Refurbishment & Maintenance	£931	£172	—	—	£1,103	£2,188
0509 - Housekeeping	£2,024	—	—	—	£2,024	£107
0510 - Office Equipment	£64	—	—	—	£64	£2,049
0511 - Stage equipment and repairs	—	—	—	—	—	—
0512 - Shop	£37	—	—	—	£37	£92
0513 - Outreach	—	£200	—	—	£200	£225
0514 - Hospitality	£83	—	—	—	£83	£58
0515 - Giving	£445	£4,866	—	—	£5,311	£4,969
0517 - Administrator's salary	—	£6,502	—	—	£6,502	£6,240
0522 - Volunteer expenses	—	—	£995	—	£995	£494
0524 - Tax	—	£6,508	—	—	£6,508	£5,192
0525 - DBS checks	£26	—	£36	—	£62	£87
0526 - Training	—	—	—	—	—	£192
0527 - Accountants fees	£627	—	—	—	£627	£268
0528 - Resources	£663	£78	—	—	£741	£990
0529 - Food and Drink	£689	£491	—	—	£1,180	£797
0530 - Office Supplies	£2	—	—	—	£2	£66
0531 - Postage	—	—	—	—	—	—
0532 - Petty Cash	—	—	—	—	—	—
0533 - Printing	£121	—	£30	—	£151	£179
0534 - Mission	—	—	—	—	—	—
0535 - Licences	£439	—	—	—	£439	£460
0536 - Subscriptions	£1,640	—	—	—	£1,640	£1,314
0537 - Bank charges	£30	—	—	—	£30	£30
0538 - Retreats/Visits/Counselling	—	£290	£850	—	£1,140	—
0539 - Miscellaneous	—	—	—	—	—	£25
0540 - Employment & Legal Services	—	—	—	—	—	£100
0541 - Business mobile	£559	—	—	—	£559	£505
0542 - Furniture	—	—	—	—	—	£1,978
0543 - Pension Contributions	£1,699	—	—	—	£1,699	£1,383
0544 - Refund	(£541)	—	—	—	(£541)	—
0545 - Community Manager salary	£19,691	—	—	—	£19,691	£6,838
0546 - Community Worker salary	—	—	£11,219	—	£11,219	£3,494
Total	£36,676	£19,110	£13,131	—	£68,918	£60,117

Governance costs

0523 - Legal fees	—	—	—	—	—	—
Total	—	—	—	—	—	—

EXPENDITURE TOTAL	£36,676	£19,110	£13,131	—	£68,918	£60,117
GRAND TOTAL	£9,664	(£14,147)	(£9,692)	—	(£14,176)	£28,270

This report dated: May 2024



Section A

Independent Examiner's Report

**Report to the trustees/
members of**

Charity Name
South Chard Church

**On accounts for the year
ended**

March 2024

**Charity no
(if any)**

1158883

Set out on pages

1 to 2

(remember to include the page numbers of additional sheets)

I report to the trustees on my examination of the accounts of the above charity ("the Trust") for the year ended 31/03/2023.

**Responsibilities and
basis of report**

As the charity's trustees, you are responsible for the preparation of the accounts in accordance with the requirements of the Charities Act 2011 ("the Act").

I report in respect of my examination of the Trust's accounts carried out under section 145 of the 2011 Act and in carrying out my examination, I have followed all the applicable Directions given by the Charity Commission under section 145(5)(b) of the Act.

**Independent
examiner's statement**

I have completed my examination. I confirm that no material matters have come to my attention in connection with the examination which gives me cause to believe that in, any material respect:

- the accounting records were not kept in accordance with section 130 of the Charities Act; or
- the accounts did not accord with the accounting records; or
- the accounts did not comply with the applicable requirements concerning the form and content of accounts set out in the Charities (Accounts and Reports) Regulations 2008 other than any requirement that the accounts give a 'true and fair' view which is not a matter considered as part of an independent examination.

I have no concerns and have come across no other matters in connection with the examination to which attention should be drawn in this report in order to enable a proper understanding of the accounts to be reached.

Signed:

Gregory Meyers

Date:

14/01/2025

Name:

Dr Gregory Meyers

**Relevant professional
qualification(s) or body
(if any):**

Address:

28 Middlepeak Way, Sheffield

S13 9DL

Only complete if the examiner needs to highlight material matters of concern (see CC32, Independent examination of charity accounts: directions and guidance for examiners).

Give here brief details of any items that the examiner wishes to disclose.

I report to Assistant of my examination of the Trust's accounts (Carry-over) under section 145 of the 2011 Act and in carrying out my examination, I have followed all the applicable provisions given by the Charity Commission and section 145(4) of the Act.

I have carried out my examination in accordance with the provisions of the 2011 Act and in carrying out my examination, I have followed all the applicable provisions given by the Charity Commission and section 145(4) of the Act.

The accounts are prepared in accordance with the provisions of the 2011 Act and in carrying out my examination, I have followed all the applicable provisions given by the Charity Commission and section 145(4) of the Act.

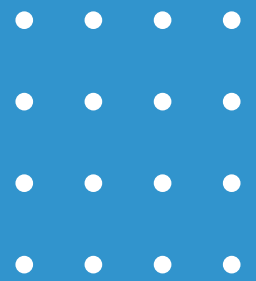
I have no concerns and have no other matters in connection with the examination to which attention should be drawn in this report in order to enable a proper understanding of the accounts to be reached.

Date: 10/10/2018

SOUTH CHARD CHURCH

England & Wales - Charity number 1158883

Accounts



2022/2023

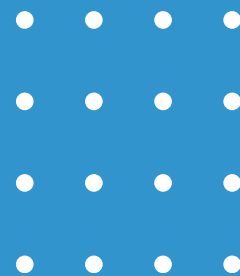
ANNUAL REPORT

Charity number 1158883



South
Chard
CHURCH





South Chard Church

This is the eighth annual report from the Trustee board at South Chard Church CIO which was formally registered in October 2014.

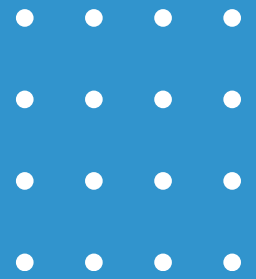
Since our previous annual review, the church has increased the amount of work we do within the local community. New groups have been established which are specific to the needs of the people we are connected with. We have been able to support more people practically, spiritually and emotionally due to the appointment of a Community Worker alongside our Community Manager. All members of our church are encouraged to learn from one another, offer pastoral support to each other and play their part within the community.

We have four trustees on the board, who meet on a regular basis and hold an AGM.

South Chard Church continues to be affiliated with Churches in Communities International, who are on standby to offer any support or advice should we require it. We also continue to work with Churches Together in Chard (part of Churches Together In England) and look forward to furthering our relationship with them in the coming year.

Community Life

This year we have continued to build on the success of The Hub at South Chard Church. This initiative is designed to engage our resources and volunteers in various programmes that support community life.



Newly Appointed Community Worker

We were thrilled to announce the appointment of a new Community Worker, Clare Redgrave. The post is funded by Somerset Community Foundation. Working alongside our Community Manager, Jenny Reid, Clare works to support the growing work we are doing in our local community. She brings years of expertise working in the charitable field, a strategic mindset and chef skills to the table. As well as several dogs!

Coffee Mornings

We continue to run our coffee mornings every week. It's become a great place for people to connect. During the winter months we teamed up with several local charities to create Chard Warm Spaces. We pooled our expertise and secured shared funding to keep our spaces open for longer.



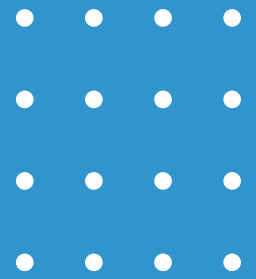
For several months we were able to secure weekly visits from Cosmic, a local project that aimed to help people who were isolated due to lack of access to technology. People were able to access training and devices. One lady with very little tech skills built her own website to showcase her short stories; some got fitbits; smart phones and laptops and were able to access training in how to use them.



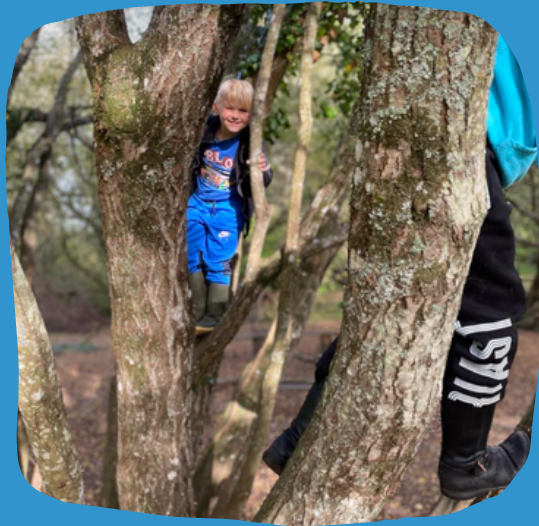
Food Provision

We continue to work with our partners to provide food to where it is most needed. We work closely with Chard Community Hub and our local food bank (Lords Larder) and often get donations from our local supermarkets which we distribute to the community. We absolutely value the joined up approach our local charities and agencies are taking to ensure no one goes hungry.

At Christmas time we worked together to give out hundreds of children's toys to families in our local community. Individuals and businesses donated to the cause and a mammoth team of volunteers rallied together to be Santa's elves and wrap and deliver the presents.



We have a small fund called "Love Chard" that individuals can donate into. We use this fund when we find someone with a need that cannot be easily sourced from our partners. We use this fund to give people supermarket vouchers or buy an essential household product if theirs breaks.



Children and Young People

Working with Chard Churches Together a team of our volunteers go out every Wednesday to our local skate park to meet and chat with the youth and build relationships with them. This August we put on a Skate Jam event, bringing in new ramps; music; a BBQ and hosting a Skate and Scoot competition, with prizes. We love to help children get outside, get muddy, and experience nature so we also run forest walks to encourage exploration.

Some of our work with children is linked to our family work, and at times our workers will assist families with school meetings (where concerns are raised) and will liaise with other agencies to seek the right provision for children and young people who are struggling.

Kids Matter

In partnership with two local primary schools we have now run two Kids Matter courses (www.kidsmatter.org.uk), helping parents get together to explore and learn new parenting ideas. Our facilitators work hard to create a welcoming, non judgmental environment of encouragement and mutual support. We have provided the course to sixteen local families this year.



"It has been a real privilege to spend time getting together with parents. Sometimes it is just about realising you are not alone. Sharing your parenting experience with others only to hear "me too" helps parents realise that the struggles they face are often universal, and gives them the courage to try out new strategies.

Gill Bough
Kids Matter Facilitator

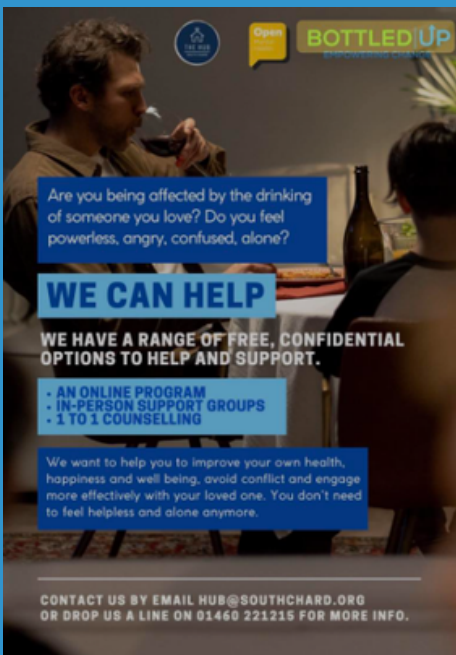


Car Scheme

Our car scheme has flourished this year, communicating a real need in our community for transport. Working with the support of our local council, our volunteer driver pool of six have undertaken 83 journeys, helping our members access essential appointments.



We are working hard to implement systems to facilitate this growing work and have had funding from Chard Town Council to help us with a new laptop and DBS checks.



Bottled up

Bottled Up is a programme designed to support families of alcoholics. We are now working closely with the founders to run this programme through the Hub. We have also successfully secured funding of £2000 from Open Mental Health to support those in need of one to one counselling.

Due to unexpected circumstances we had to postpone the launch of this project, but our volunteers were trained this year and we are primed and ready to launch.

Outstanding Volunteers

Our volunteer team continues to amaze us! This year is no exception. From helping people to get on top of their house or garden to providing bereavement support, wrapping Christmas presents or delivering food to even running a pop up herb growing course. We work hard to listen to our volunteers' ideas and give room and support in order for them to succeed. The team is diverse, friendly and ever growing and we are so proud to call them our friends.



Tatworth Tots



We run a weekly parent and toddler session which is facilitated by three volunteers. We have over 30 families attending regularly. Every session comes to an end with Gill providing a song and instrument time where all the children and parents are encouraged to join in.

Our Tots team try to identify those families who might need a little extra support and have connected several parents with financial support; food provision; emotional support and access to our Kids Matter parenting course.

External links

We know that we achieve more when we work together. That's why we are part of the Chard One Team (regular, local multi agency meetings) and it's why our Community Manager is a Council Coordinator for CiC (Churches in Communities), the vice chair of our local Independent Advisory Group for the Police (IAG). We continue to value our partners and invest in our connections. This year our Community Manager attended the NAIAG (National Association of Independent Advisory Groups to the Police) in Bedfordshire to continue to contribute to the conversation around how the community can best speak into the policies and procedures of the Police.

"Working with external agencies is at the heart of what we do. We have achieved so much this year that wouldn't have been possible prior to working together with our partners."

Jenny, 44,
Community Manager

"Knowing I can request training in a certain area if I feel I am lacking in expertise is so reassuring. I learnt so much on the impact measurement course that I have been able to implement, as well as share my learning with our local partners."

Jenny, 44,
Community Manager

Training

We work hard to ensure all our staff and volunteers have relevant up to date training. This year we accessed training for different members of our team, putting our community manager on an extended course around digital engagement and impact measurement and we rolled out in-house safeguarding training day for all our volunteers.



Church Life



Sunday Morning Services

We meet every Sunday morning at 10am. We never really know what is going to happen these days as we have moved to a more informal set up where we listen to the Holy Spirit and allow Him to lead our time together. This has made for some interesting, amusing and absolutely wonderful encounters as we track this road together, recognising that there is not one person who has all the answers, rather we all, perhaps, bring a little piece to the table.

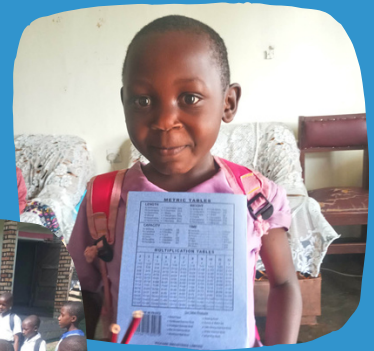
Growing Together

In line with our ethos we make room and facilitate individuals to start group gatherings and other get togethers where they feel it is needed. We have had several pop up Bible studies hosted in homes and at our building; discussion groups; prayer meetings and one to one discipleship develop in this way. We are encouraged to recognise again and again that everyone has something to contribute and we love to see this being worked out.



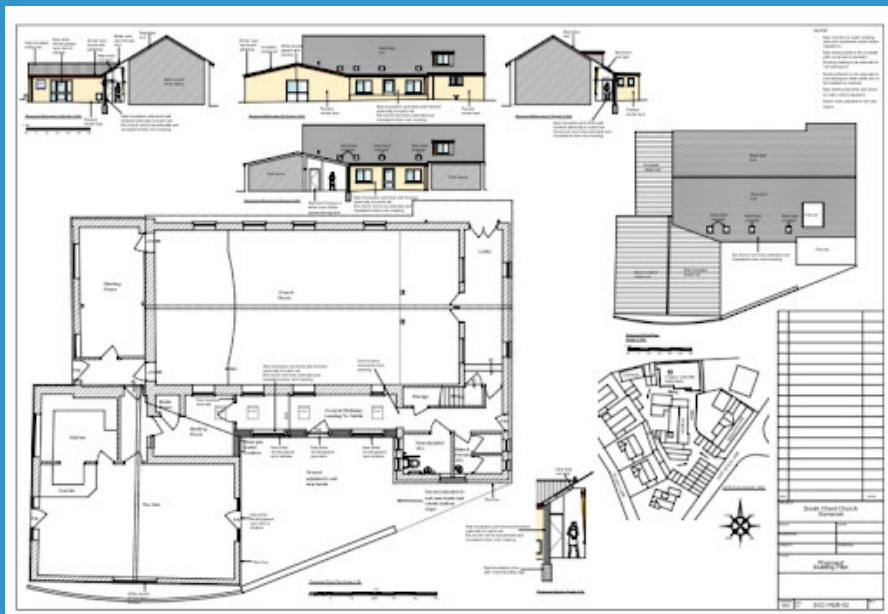
Overseas Support

We continue to support Pastor Moses. A team of volunteers from South Chard Church have set up a scheme whereby we sponsor five children from an orphanage, on a monthly basis. This sponsorship pays for each child's educational needs, food, and housing. Furthermore we also assist financially with the hire of a hall which is used as their main church premises, holding meetings and clubs during the week and services at the weekend.



Building development

Since our last annual review we have decided to move forward with our decision to create a community space/drop in centre in one of our buildings. Drawings have been created, conversations are happening with our local council and we are preparing to submit an application to the planning department. Our fundraising team is on standby ready to apply for funding bids to finance the work.



**South Chard Church
1158883**

End of Year Financial Statements

Year ending March 31 2023

Statement of Financial Activities

	Unrestricted funds	Restricted funds	Endowment funds	Total funds	Prior year total funds
Incoming resources					
Incoming resources from generated funds	9,558	16,000	—	25,558	2,500
Voluntary income	49,117	—	—	49,117	51,328
Activities for generating funds	12	—	—	12	356
Incoming resources from charitable activities	1,012	1,234	—	2,247	1,152
Other incoming resources	11,452	—	—	11,452	—
Total income	71,153	17,234	—	88,388	55,337
Resources used					
Charitable activities	55,536	4,581	—	60,117	54,770
Governance costs	—	—	—	—	—
Total expenditure	55,536	4,581	—	60,117	54,770
Gains / losses on investment assets	—	—	—	—	—
Net income / (expenditure) resources before transfer	15,617	12,653	—	28,270	567
Transfers					
Gross transfers between funds - in	27,424	—	—	27,424	21,485
Gross transfers between funds - out	(26,489)	(934)	—	(27,424)	(21,485)
Other recognised gains / losses					
Gains on revaluation, fixed assets, charity's own use	—	—	—	—	—
Net movement in funds	16,551	11,718	—	28,270	567
Total funds brought forward	10,143	2,210	—	12,353	11,786
Total funds carried forward	26,695	13,928	—	40,624	12,353
Represented by					
Unrestricted					
General fund	2,187	—	—	2,187	145
Designated					
Administrator fund	—	—	—	—	—
Annual Expense fund	1,251	—	—	1,251	1,077
CAP fund	—	—	—	—	—
Children's Work fund	17	—	—	17	17
Church Weekend fund	—	—	—	—	—
Church maintenance fund	14,287	—	—	14,287	4,007
Community	1,161	—	—	1,161	1,441
Ignite fund	—	—	—	—	—
India	—	—	—	—	—
Kids Matter	—	—	—	—	—
Love Chard	397	—	—	397	538
Men's Ministry fund	71	—	—	71	109
Ministry School fund	—	—	—	—	—
Mission fund	760	—	—	760	—
Pappy Daniel India fund	—	—	—	—	—
Prisons Work	100	—	—	100	100
Savings	5,000	—	—	5,000	1,000
Special Offering fund	574	—	—	574	574
Tatworth Tots	377	—	—	377	278
Tithe fund	99	—	—	99	323
Uganda	60	—	—	60	180
Youth Worker fund	349	—	—	349	349
Restricted					
Bottled Up	—	2,000	—	2,000	2,000
Car Scheme	—	1,086	—	1,086	—
Community Worker	—	10,632	—	10,632	—
Manor House Fund	—	210	—	210	210

Balance sheet

	Total funds	Prior year funds
Current assets		
Cash at bank and in hand	40,899	12,353
	40,899	12,353
Liabilities		
Creditors: Amounts falling due in one year	275	—
	275	—
Net current assets less current liabilities	40,624	12,353
Total assets less current liabilities	40,624	12,353
Total net assets less liabilities	40,624	12,353
Represented by		
Unrestricted		
General fund	2,187	145
Designated		
Annual Expense fund	1,251	1,077
Love Chard	397	538
Church maintenance fund	14,287	4,007
Men's Ministry fund	71	109
Mission fund	760	—
Prisons Work	100	100
Ministry School fund	—	—
Savings	5,000	1,000
Special Offering fund	574	574
Tithe fund	99	323
Tatworth Tots	377	278
Administrator fund	—	—
Uganda	60	180
Church Weekend fund	—	—
Youth Worker fund	349	349
CAP fund	—	—
Children's Work fund	17	17
Community	1,161	1,441
Ignite fund	—	—
India	—	—
Pappy Daniel India fund	—	—
Kids Matter	—	—
Restricted		
Bottled Up	2,000	2,000
Community Worker	10,632	—
Car Scheme	1,086	—
Manor House Fund	210	210
Funds of the church	40,624	12,353

Statement of assets and liabilities

	General	Designated	Restricted	Endowment	This year	Last year
Current assets - Cash at bank and in hand						
NatWest Current -	2,260	24,508	14,203	—	40,972	12,435
NatWest Credit -	(72)	—	—	—	(72)	(81)
Totals	2,187	24,508	14,203	—	40,899	12,353
Liabilities - Agency accounts						
Agency collections -	—	—	275	—	275	—
Totals	—	—	275	—	275	—
Grand total	2,187	24,508	13,928	—	40,624	12,353

Fund movement by type

	Opening	Incoming	Outgoing	Transfers	Gains/losses	Journals	Closing
AE - Annual Expense fund							
Designated	1,077	6,000	9,094	3,268	—	—	1,251
Sub-total for AE	1,077	6,000	9,094	3,268	—	—	1,251
Admin - Administrator fund							
Designated	—	720	6,240	5,520	—	—	—
Sub-total for Admin	—	720	6,240	5,520	—	—	—
BU - Bottled Up							
Restricted	2,000	—	—	—	—	—	2,000
Sub-total for BU	2,000	—	—	—	—	—	2,000
CAP - CAP fund							
Designated	—	—	—	—	—	—	—
Sub-total for CAP	—	—	—	—	—	—	—
CW - Community Worker							
Restricted	—	15,000	3,494	(873)	—	—	10,632
Sub-total for CW	—	15,000	3,494	(873)	—	—	10,632
Car - Car Scheme							
Restricted	—	2,234	1,087	(61)	—	—	1,086
Sub-total for Car	—	2,234	1,087	(61)	—	—	1,086
Children - Children's Work fund							
Designated	17	—	—	—	—	—	17
Sub-total for Children	17	—	—	—	—	—	17
Comm - Community							
Designated	1,441	2,149	2,154	(274)	—	—	1,161
Sub-total for Comm	1,441	2,149	2,154	(274)	—	—	1,161
Ignite - Ignite fund							
Designated	—	—	—	—	—	—	—
Sub-total for Ignite	—	—	—	—	—	—	—
Ind - India							
Designated	—	—	—	—	—	—	—
Sub-total for Ind	—	—	—	—	—	—	—
India - Pappy Daniel India f							
Designated	—	—	—	—	—	—	—
Sub-total for India	—	—	—	—	—	—	—
KM - Kids Matter							
Designated	—	—	120	120	—	—	—
Sub-total for KM	—	—	120	120	—	—	—
LC - Love Chard							
Designated	538	619	409	(350)	—	—	397
Sub-total for LC	538	619	409	(350)	—	—	397
Maint - Church maintenance f							
Designated	4,007	13,931	1,358	(2,293)	—	—	14,287
Sub-total for Maint	4,007	13,931	1,358	(2,293)	—	—	14,287
Manor - Manor House Fund							
Restricted	210	—	—	—	—	—	210
Sub-total for Manor	210	—	—	—	—	—	210
Men - Men's Ministry fund							
Designated	109	200	238	—	—	—	71
Sub-total for Men	109	200	238	—	—	—	71
Mission - Mission fund							
Designated	—	1,000	239	—	—	—	760
Sub-total for Mission	—	1,000	239	—	—	—	760
Prison - Prisons Work							
Designated	100	—	—	—	—	—	100

	Sub-total for Prison	100	—	—	—	—	—	100
SCSM - Ministry School fund								
Designated		—	—	—	—	—	—	—
	Sub-total for SCSM	—	—	—	—	—	—	—
Save - Savings								
Designated		1,000	—	—	4,000	—	—	5,000
	Sub-total for Save	1,000	—	—	4,000	—	—	5,000
SpecOff - Special Offering fun								
Designated		574	—	—	—	—	—	574
	Sub-total for SpecOff	574	—	—	—	—	—	574
Tithe - Tithe fund								
Designated		323	—	2,169	1,945	—	—	99
	Sub-total for Tithe	323	—	2,169	1,945	—	—	99
Tots - Tatworth Tots								
Designated		278	606	272	(235)	—	—	377
	Sub-total for Tots	278	606	272	(235)	—	—	377
Uganda - Uganda								
Designated		180	—	1,920	1,800	—	—	60
	Sub-total for Uganda	180	—	1,920	1,800	—	—	60
Weekend - Church Weekend fund								
Designated		—	—	—	—	—	—	—
	Sub-total for Weekend	—	—	—	—	—	—	—
Youth - Youth Worker fund								
Designated		349	—	—	—	—	—	349
	Sub-total for Youth	349	—	—	—	—	—	349
General - General fund								
Unrestricted		145	45,925	31,317	(12,566)	—	—	2,187
	Sub-total for General	145	45,925	31,317	(12,566)	—	—	2,187
	Grand total	12,353	88,388	60,117	—	—	—	40,624

Analysis of income and expenditure

	<u>Unrestricted</u>	<u>Designated</u>	<u>Restricted</u>	<u>Endowment</u>	<u>Total</u> <u>This year</u>	<u>Last year</u>
INCOME AND ENDOWMENTS						
Incoming resources from generated funds						
0108 - Bank Interest	—	—	—	—	—	—
0119 - Grant	1,126	8,431	16,000	—	25,558	2,500
Total	1,126	8,431	16,000	—	25,558	2,500
Incoming resources from generated funds - Voluntary income						
0101 - General Offering	8,932	—	—	—	8,932	6,131
0102 - Standing Orders	26,362	—	—	—	26,362	30,946
0103 - Special Offering	70	505	—	—	575	1,330
0104 - Special Gifts	1,350	2,717	—	—	4,067	4,125
0105 - Standing Orders for Specific Purposes	180	2,019	—	—	2,199	3,064
0109 - Gift Aid	6,981	—	—	—	6,981	5,731
0118 - Children's Offering	—	—	—	—	—	—
Total	43,876	5,241	—	—	49,117	51,328
Incoming resources from generated funds - Activities for generating funds						
0107 - Fundraising	12	—	—	—	12	356
0110 - Building Hire	—	—	—	—	—	—
Total	12	—	—	—	12	356
Incoming resources from charitable activities						
0106 - Kids & Co	—	606	—	—	606	588
0111 - Shop	74	—	—	—	74	166
0112 - Conference registration	—	—	—	—	—	—
0113 - Miscellaneous	—	—	—	—	—	—
0114 - Men's Ministry	—	200	—	—	200	61
0115 - Church Weekend payment	—	—	—	—	—	—
0116 - Repayment	130	—	—	—	130	336
0117 - SCSM	—	—	—	—	—	—
0120 - Car Scheme	—	—	1,234	—	1,234	—
Total	205	807	1,234	—	2,247	1,152
Other incoming resources						
0121 - Insurance claim	705	10,747	—	—	11,452	—
Total	705	10,747	—	—	11,452	—
INCOME TOTAL	45,925	25,227	17,234	—	88,388	55,337

EXPENDITURE

Charitable activities

0501 - Gas	1,122	124	—	—	1,246	2,621
0502 - Electricity	882	505	—	—	1,388	318
0503 - Water	374	—	—	—	374	430
0504 - Telephone	—	—	—	—	—	—
0505 - Broadband	676	—	—	—	676	732
0506 - Website	16	505	—	—	521	—
0507 - Building and Contents Insurance	1,702	—	—	—	1,702	1,542
0508 - Refurbishment and Maintenance	829	1,358	—	—	2,188	1,939
0509 - Housekeeping	107	—	—	—	107	125
0510 - Office Equipment	—	1,649	400	—	2,049	181
0511 - Stage equipment and repairs	—	—	—	—	—	2,144
0512 - Shop	92	—	—	—	92	—
0513 - Outreach	185	40	—	—	225	20
0514 - Hospitality	58	—	—	—	58	67
0515 - Giving	350	4,619	—	—	4,969	9,042
0516 - Leader Salary	—	—	—	—	—	19,335
0517 - Administrator's salary	—	6,240	—	—	6,240	6,240
0518 - Youth Worker salary	—	—	—	—	—	—
0519 - Domestic salary	—	—	—	—	—	—
0520 - Pastor expenses	—	—	—	—	—	—
0521 - Youth Worker expenses	—	—	—	—	—	—
0522 - Volunteer expenses	—	—	494	—	494	36
0524 - Tax	—	5,192	—	—	5,192	3,959
0525 - DBS checks	75	—	12	—	87	76
0526 - Training	12	—	180	—	192	290
0527 - Accountants fees	268	—	—	—	268	748
0528 - Resources	590	400	—	—	990	1,106
0529 - Food and Drink	486	310	—	—	797	380
0530 - Office Supplies	66	—	—	—	66	61
0531 - Postage	—	—	—	—	—	—
0532 - Petty Cash	—	—	—	—	—	—
0533 - Printing	179	—	—	—	179	129
0534 - Mission	—	—	—	—	—	—
0535 - Licences	460	—	—	—	460	405
0536 - Subscriptions	1,314	—	—	—	1,314	1,100
0537 - Bank charges	30	—	—	—	30	30
0538 - Retreats/Visits/Counselling	—	—	—	—	—	140
0539 - Miscellaneous	25	—	—	—	25	—
0540 - Employment and Legal Services	100	—	—	—	100	—
0541 - Business mobile	505	—	—	—	505	404
0542 - Furniture	1,978	—	—	—	1,978	12
0543 - Pension Contributions	1,383	—	—	—	1,383	1,243
0544 - Refund	—	—	—	—	—	(96)
0545 - Community Manager salary	17,444	3,272	—	—	20,716	—
0546 - Community Worker salary	—	—	3,494	—	3,494	—
Total	31,317	24,218	4,581	—	60,117	54,770

Governance costs

0523 - Legal fees	—	—	—	—	—	—
Total	—	—	—	—	—	—
EXPENDITURE TOTAL	31,317	24,218	4,581	—	60,117	54,770
GRAND TOTAL	14,608	1,008	12,653	—	28,270	567

This report dated: 26th April 2023



Section A

Independent Examiner's Report

**Report to the trustees/
members of**

Charity Name
South Chard Church

**On accounts for the year
ended**

March 31st 2023

**Charity no
(if any)**

1158883

Set out on pages

1 to 2

(remember to include the page numbers of additional sheets)

I report to the trustees on my examination of the accounts of the above charity ("the Trust") for the year ended 31/03/2023.

**Responsibilities and
basis of report**

As the charity's trustees, you are responsible for the preparation of the accounts in accordance with the requirements of the Charities Act 2011 ("the Act").

I report in respect of my examination of the Trust's accounts carried out under section 145 of the 2011 Act and in carrying out my examination, I have followed all the applicable Directions given by the Charity Commission under section 145(5)(b) of the Act.

**Independent
examiner's statement**

I have completed my examination. I confirm that no material matters have come to my attention in connection with the examination which gives me cause to believe that in, any material respect:

- the accounting records were not kept in accordance with section 130 of the Charities Act; or
- the accounts did not accord with the accounting records; or
- the accounts did not comply with the applicable requirements concerning the form and content of accounts set out in the Charities (Accounts and Reports) Regulations 2008 other than any requirement that the accounts give a 'true and fair' view which is not a matter considered as part of an independent examination.

I have no concerns and have come across no other matters in connection with the examination to which attention should be drawn in this report in order to enable a proper understanding of the accounts to be reached.

Signed: 

Date: 23/08/2023

Name: Gregory Meyers

**Relevant professional
qualification(s) or body
(if any):**

Address: 28 Middlepeak Way, Sheffield

S13 9DL

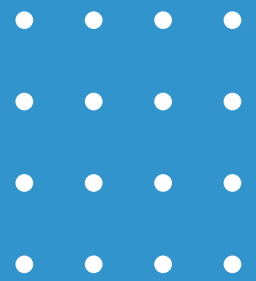
Only complete if the examiner needs to highlight material matters of concern (see CC32, Independent examination of charity accounts: directions and guidance for examiners).

Give here brief details of any items that the examiner wishes to disclose.

SOUTH CHARD CHURCH

England & Wales - Charity number 1158883

Accounts



2021/2022

ANNUAL REPORT

Charity number 1158883



South
Chard
CHURCH





South Chard Church

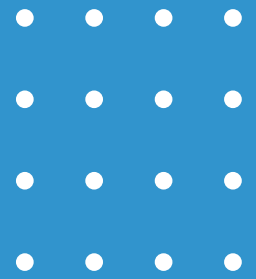
This is the seventh annual report from the Trustee board of the South Chard Church CIO which was formally registered in October 2014.

Since our previous annual review, the spiritual life of the church has grown and evolved. The elders now take a greater responsibility in the spiritual care of the church and our team leader has now moved onto a new position as a Community Manager. All members of our church are encouraged to offer one another pastoral support and we are on a journey of learning what it is to be “church” to one another.

We still continue to have four trustees, who meet on a regular basis and have also held an annual AGM.

South Chard Church continues to be affiliated with Churches in Communities International and the Evangelical Alliance of Great Britain, who are on standby to offer any support or advice should we require it. We also continue to work with Churches Together in Chard (part of Churches Together In England) and look forward to furthering our relationship with them in the coming year.

Community Life



This year we have launched The Hub at South Chard Church. This initiative is designed to engage our resources and volunteers in various programmes that support community life. Jenny Reid has been appointed as the Community Manager and has had a hugely successful start:-



New appointed community manager

We were thrilled to announce the appointment of a new Community Manager. This new role will certainly evolve as time progresses, however at present the Community Manager is exploring ways to impact the community, making firm relationships with outside agencies, partnering with existing outreach centres and laying down the foundations for the schemes we have previously mentioned.

Coffee Mornings

We now run our coffee morning every week. It's become a great place for people to connect from the youngest (0 years and 2 weeks) to the oldest (80 something something... she said she didn't want to give too much away) .

"I look forward to the coffee morning every week. I love it because we always end up laughing. It's so relaxed and friendly. I also love the cake!"

Keith, 72
coffee morning regular



Food Provision

We continued to work with our partners to provide food boxes to households in need. Responding to 14 referring agencies, over thirty volunteers packed and delivered Christmas in a Box to 102 homes reaching 185 Children.

Together the community raised over £1000 on our JustGiving page and further donations of food and festive items were also received.



Young People

Working with Chard Churches Together a team of our volunteers go out every Wednesday to our local skate park to meet and chat with the youth and build relationships with them. There are plans in the future to engage the young people in fundraising to provide improvements and repairs to the skate park.



Kids Matter

Two of our local primary schools asked us to help them provide parenting classes for some of their parents. In response we worked with Kids Matter (www.kidsmatter.org.uk) to fully train two of our volunteers as Kids Matter Facilitators and we are ready to launch with our interactive on site courses in the coming months.



“A number of parents who have children that attend the school have difficulty parenting their children and sourcing an appropriate non-judgmental parenting course. I am extremely excited about how working with South Chard Church (the HUB South Chard) will transform the lives of many children and parents who are part of the Manor Court community.”

Luke Talmage,
Head Teacher
Manor Court Primary School

Car Scheme

During meetings with The One Team, it became evident that affordable transport was lacking within our community. Working closely with Travel Somerset we have set up a community led transport scheme that supports people with essential travel needs, at an affordable rate.

We have worked hard behind the scenes to ensure all administrative criteria is met and are now able to provide this service to a growing number of people. Whilst we now facilitate the scheme it is led entirely by volunteers from the community.



Bottled up

Bottled Up is a programme designed to support families of alcoholics. We are now working closely with the founders to run this programme through the Hub. We have also successfully secured funding of £2000 from Open Mental Health to support those in need of one to one counselling.



"I am so excited to be a part of the Bottled Up team. There are so few resources out there that offer support in this area. I 'm sure it will bring real change to people who are often overlooked."

Clare, 49, Volunteer

"Volunteering at South Chard Church (The HUB South Chard) has given me a sense of purpose and community. Helping others has brought me joy and satisfaction in my life."

*Tracey, 41
Volunteer*

Volunteers, Volunteers, Volunteers

Our volunteer team is always outstanding! This year has been no exception. From completely renovating an overgrown garden, to helping someone clear their cluttered flat. Visiting the lonely; driving the sick to hospital; or responding to an unexpected flood with all hands on deck. The team is diverse, friendly and ever growing and we are so proud to call them our friends.

Tatworth Tots

We have been able to resume our weekly toddlers session. Currently being facilitated by two volunteers, we have over 30 families regularly attending. We were delighted to provide an evening meal for all the parents, giving them a chance to relax and get to know each other without the distractions of young children. The group is now parent led and continues to thrive and grow.



“Working with external agencies is at the heart of what we do. We have achieved so much this year that wouldn't have been possible prior to working together with our partners.”

Jenny, 43,
Community Manager

External links

We know that we achieve more when we work together. That's why we are part of the Chard One Team (regular, local multi agency meetings) and it's why our Community Manager is a Council Coordinator for CiC (Churches in Communities), the vice chair of our local Independent Advisory Group for the Police (IAG) and a member of the Counter Terrorism IAG. We continue to value our partners and invest in our connections.

Training

We work hard to ensure all our staff and volunteers have relevant up to date training. This year we accessed training for different members of our team in first aid; bid writing; dementia awareness; compassionate listening; trustee training; digital marketing and safeguarding.

“I am so grateful to have been able to access dementia awareness training and first aid training this year through the HUB South Chard. I feel equipped and supported to carry out my volunteer role more effectively.”

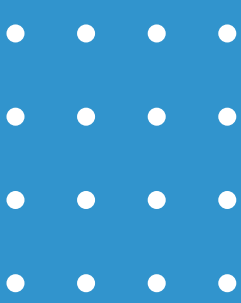
Gill, 59, volunteer

Website

It's been so exciting to work on the launch of our brand new website which showcases our community team and all our projects.

www.thehubsouthchard.co.uk





Church Life



Sunday Morning Services

In this post Covid period, we have now resumed our weekly Sunday services and have welcomed back old faces and new alike. We have changed the seating arrangements and the band area to make the church layout to feel more inclusive and less formal.



"Phew it's good to be back"

*Jackie, 55,
Church Member*

Peer Pastoral Support

Rather than looking to the church leaders for pastoral care, we are facilitating our church members to provide pastoral care to each other whether it is in a practical, emotional or spiritual capacity. In doing this our aim is to deepen relationships and operate as 'one body' developing a greater understanding of our church family's needs.





Policies and procedures

All our Health and Safety policies have been reviewed and updated where necessary. We have also created a new volunteer pack, which includes helpful information and our policies and procedures. This is available online as well as in print to make access easier for all our volunteers.

Overseas Support

We continue to support Pastor Moses. A team of volunteers from South Chard Church have set up a scheme whereby we sponsor five children from an orphanage, on a monthly basis. This sponsorship pays for each child's educational needs, food, and housing.



Furthermore we also assist financially with the hire of a hall which is used as their main church premises, holding meetings and clubs during the week and services at the weekend.

Building development

Since our last annual review we have decided to move forward with our decision to create a community space/drop in centre in one of our buildings.

Drawings have been created, conversations are happening with our local council and we are preparing to submit an application to the planning department. Our fundraising team is on standby ready to apply for funding bids to finance the work.



**South Chard Church
1158883**

End of Year Financial Statements

Year ending March 2022

Statement of Financial Activities

	Unrestricted funds	Restricted funds	Endowment funds	Total funds	Prior year total funds
Incoming resources					
Incoming resources from generated funds	500	2,000	—	2,500	—
Voluntary income	51,328	—	—	51,328	59,707
Activities for generating funds	356	—	—	356	368
Incoming resources from charitable activities	1,152	—	—	1,152	2,285
Total income	53,337	2,000	—	55,337	62,361
Resources used					
Charitable activities	54,770	—	—	54,770	63,884
Governance costs	—	—	—	—	—
Total expenditure	54,770	—	—	54,770	63,884
Gains / losses on investment assets	—	—	—	—	—
Net income / (expenditure) resources before transfer	(1,432)	2,000	—	567	(1,522)
Transfers					
Gross transfers between funds - in	21,485	—	—	21,485	23,634
Gross transfers between funds - out	(21,485)	—	—	(21,485)	(23,634)
Other recognised gains / losses					
Gains on revaluation, fixed assets, charity's own use	—	—	—	—	—
Net movement in funds	(1,432)	2,000	—	567	(1,522)
Total funds brought forward	11,576	210	—	11,786	13,308
Total funds carried forward	10,143	2,210	—	12,353	11,786
Represented by					
Unrestricted					
General fund	145	—	—	145	674
Designated					
Administrator fund	—	—	—	—	—
Annual Expense fund	1,077	—	—	1,077	2,993
CAP fund	—	—	—	—	—
Children's Work fund	17	—	—	17	103
Church Weekend fund	—	—	—	—	—
Church maintenance fund	4,007	—	—	4,007	3,664
Community	1,441	—	—	1,441	—
Ignite fund	—	—	—	—	—
India	—	—	—	—	—
Kids Matter	—	—	—	—	—
Love Chard	538	—	—	538	150
Men's Ministry fund	109	—	—	109	90
Ministry School fund	—	—	—	—	—
Mission fund	—	—	—	—	—
Pappy Daniel India fund	—	—	—	—	—
Prisons Work	100	—	—	100	120
Savings	1,000	—	—	1,000	2,380
Special Offering fund	574	—	—	574	696
Tatworth Tots	278	—	—	278	167
Tithe fund	323	—	—	323	181
Uganda	180	—	—	180	5
Youth Worker fund	349	—	—	349	349
Restricted					
Bottled Up	—	2,000	—	2,000	—
Manor House Fund	—	210	—	210	210

Balance sheet

	Total funds	Prior year funds
Current assets		
Cash at bank and in hand	12,353	11,786
	12,353	11,786
Net current assets less current liabilities	12,353	11,786
Total assets less current liabilities	12,353	11,786
Total net assets less liabilities	12,353	11,786
Represented by		
Unrestricted		
General fund	145	674
Designated		
Annual Expense fund	1,077	2,993
Love Chard	538	150
Church maintenance fund	4,007	3,664
Men's Ministry fund	109	90
Mission fund	—	—
Prisons Work	100	120
Ministry School fund	—	—
Savings	1,000	2,380
Special Offering fund	574	696
Tithe fund	323	181
Tatworth Tots	278	167
Administrator fund	—	—
Uganda	180	5
Church Weekend fund	—	—
Youth Worker fund	349	349
CAP fund	—	—
Children's Work fund	17	103
Community	1,441	—
Ignite fund	—	—
India	—	—
Pappy Daniel India fund	—	—
Kids Matter	—	—
Restricted		
Bottled Up	2,000	—
Manor House Fund	210	210
Funds of the church	12,353	11,786

Statement of assets and liabilities

	General	Designated	Restricted	Endowment	This year	Last year
Current assets - Cash at bank and in hand						
NatWest Current -	227	9,998	2,210	—	12,435	11,902
NatWest Credit -	(81)	—	—	—	(81)	(116)
Totals	145	9,998	2,210	—	12,353	11,786
Grand total	145	9,998	2,210	—	12,353	11,786

Fund movement by type

	Opening	Incoming	Outgoing	Transfers	Gains/losses	Journals	Closing
AE - Annual Expense fund							
Designated	2,993	1,570	7,621	4,135	—	—	1,077
Sub-total for AE	2,993	1,570	7,621	4,135	—	—	1,077
Admin - Administrator fund							
Designated	—	1,080	6,240	5,160	—	—	—
Sub-total for Admin	—	1,080	6,240	5,160	—	—	—
BU - Bottled Up							
Restricted	—	2,000	—	—	—	—	2,000
Sub-total for BU	—	2,000	—	—	—	—	2,000
CAP - CAP fund							
Designated	—	—	—	—	—	—	—
Sub-total for CAP	—	—	—	—	—	—	—
Children - Children's Work fund							
Designated	103	—	86	—	—	—	17
Sub-total for Children	103	—	86	—	—	—	17
Comm - Community							
Designated	—	1,500	58	—	—	—	1,441
Sub-total for Comm	—	1,500	58	—	—	—	1,441
Ignite - Ignite fund							
Designated	—	—	—	—	—	—	—
Sub-total for Ignite	—	—	—	—	—	—	—
Ind - India							
Designated	—	—	—	—	—	—	—
Sub-total for Ind	—	—	—	—	—	—	—
India - Pappy Daniel India f							
Designated	—	—	—	—	—	—	—
Sub-total for India	—	—	—	—	—	—	—
KM - Kids Matter							
Designated	—	—	150	150	—	—	—
Sub-total for KM	—	—	150	150	—	—	—
LC - Love Chard							
Designated	150	978	657	67	—	—	538
Sub-total for LC	150	978	657	67	—	—	538
Maint - Church maintenance f							
Designated	3,664	860	517	—	—	—	4,007
Sub-total for Maint	3,664	860	517	—	—	—	4,007
Manor - Manor House Fund							
Restricted	210	—	—	—	—	—	210
Sub-total for Manor	210	—	—	—	—	—	210
Men - Men's Ministry fund							
Designated	90	136	117	—	—	—	109
Sub-total for Men	90	136	117	—	—	—	109
Mission - Mission fund							
Designated	—	775	1,775	1,000	—	—	—
Sub-total for Mission	—	775	1,775	1,000	—	—	—
Prison - Prisons Work							
Designated	120	160	—	(180)	—	—	100
Sub-total for Prison	120	160	—	(180)	—	—	100
SCSM - Ministry School fund							
Designated	—	—	—	—	—	—	—
Sub-total for SCSM	—	—	—	—	—	—	—
Save - Savings							
Designated	2,380	—	—	(1,380)	—	—	1,000

	Sub-total for Save	2,380	—	—	(1,380)	—	—	1,000
SpecOff - Special Offering fun								
Designated		696	—	—	(122)	—	—	574
	Sub-total for SpecOff	696	—	—	(122)	—	—	574
Tithe - Tithe fund								
Designated		181	—	1,710	1,852	—	—	323
	Sub-total for Tithe	181	—	1,710	1,852	—	—	323
Tots - Tatworth Tots								
Designated		167	588	130	(346)	—	—	278
	Sub-total for Tots	167	588	130	(346)	—	—	278
Uganda - Uganda								
Designated		5	1,936	3,167	1,406	—	—	180
	Sub-total for Uganda	5	1,936	3,167	1,406	—	—	180
Weekend - Church Weekend fund								
Designated		—	—	—	—	—	—	—
	Sub-total for Weekend	—	—	—	—	—	—	—
Youth - Youth Worker fund								
Designated		349	—	—	—	—	—	349
	Sub-total for Youth	349	—	—	—	—	—	349
General - General fund								
Unrestricted		674	43,753	32,539	(11,743)	—	—	145
	Sub-total for General	674	43,753	32,539	(11,743)	—	—	145
	Grand total	11,786	55,337	54,770	—	—	—	12,353

Analysis of income and expenditure

	<u>Unrestricted</u>	<u>Designated</u>	<u>Restricted</u>	<u>Endowment</u>	<u>Total</u>	
					<u>This year</u>	<u>Last year</u>
INCOME AND ENDOWMENTS						
Incoming resources from generated funds						
0108 - Bank Interest	—	—	—	—	—	—
0119 - Grant	—	500	2,000	—	2,500	—
Total	—	500	2,000	—	2,500	—
Incoming resources from generated funds - Voluntary income						
0101 - General Offering	6,131	—	—	—	6,131	3,780
0102 - Standing Orders	30,946	—	—	—	30,946	34,379
0103 - Special Offering	—	1,330	—	—	1,330	800
0104 - Special Gifts	—	4,125	—	—	4,125	12,602
0105 - Standing Orders for Specific Purposes	700	2,364	—	—	3,064	1,858
0109 - Gift Aid	5,731	—	—	—	5,731	6,288
0118 - Children's Offering	—	—	—	—	—	—
Total	43,509	7,819	—	—	51,328	59,707
Incoming resources from generated funds - Activities for generating funds						
0107 - Fundraising	77	279	—	—	356	368
0110 - Building Hire	—	—	—	—	—	—
Total	77	279	—	—	356	368
Incoming resources from charitable activities						
0106 - Kids & Co	—	588	—	—	588	—
0111 - Shop	166	—	—	—	166	—
0112 - Conference registration	—	—	—	—	—	—
0113 - Miscellaneous	—	—	—	—	—	0
0114 - Men's Ministry	—	61	—	—	61	—
0115 - Church Weekend payment	—	—	—	—	—	—
0116 - Repayment	—	336	—	—	336	2,285
0117 - SCSM	—	—	—	—	—	—
Total	166	986	—	—	1,152	2,285
INCOME TOTAL	43,753	9,584	2,000	—	55,337	62,361

EXPENDITURE

Charitable activities

0501 - Gas	2,621	—	—	—	2,621	780
0502 - Electricity	318	—	—	—	318	306
0503 - Water	430	—	—	—	430	444
0504 - Telephone	—	—	—	—	—	—
0505 - Broadband	732	—	—	—	732	582
0506 - Website	—	—	—	—	—	100
0507 - Building and Contents Insurance	1,542	—	—	—	1,542	1,433
0508 - Refurbishment and Maintenance	1,422	517	—	—	1,939	11,949

0509 - Housekeeping	125	—	—	—	125	—
0510 - Office Equipment	160	21	—	—	181	33
0511 - Stage equipment and repairs	22	2,122	—	—	2,144	180
0512 - Shop	—	—	—	—	—	—
0513 - Outreach	20	—	—	—	20	—
0514 - Hospitality	67	—	—	—	67	—
0515 - Giving	42	8,999	—	—	9,042	10,321
0516 - Leader Salary	19,335	—	—	—	19,335	19,315
0517 - Administrator's salary	—	6,240	—	—	6,240	6,240
0518 - Youth Worker salary	—	—	—	—	—	—
0519 - Domestic salary	—	—	—	—	—	—
0520 - Pastor expenses	—	—	—	—	—	—
0521 - Youth Worker expenses	—	—	—	—	—	—
0522 - Volunteer expenses	—	36	—	—	36	317
0524 - Tax	—	3,959	—	—	3,959	4,015
0525 - DBS checks	76	—	—	—	76	—
0526 - Training	290	—	—	—	290	79
0527 - Accountants fees	748	—	—	—	748	198
0528 - Resources	949	157	—	—	1,106	945
0529 - Food and Drink	203	177	—	—	380	323
0530 - Office Supplies	61	—	—	—	61	—
0531 - Postage	—	—	—	—	—	18
0532 - Petty Cash	—	—	—	—	—	—
0533 - Printing	129	—	—	—	129	93
0534 - Mission	—	—	—	—	—	—
0535 - Licences	405	—	—	—	405	344
0536 - Subscriptions	1,100	—	—	—	1,100	979
0537 - Bank charges	30	—	—	—	30	30
0538 - Retreats/Visits/Counselling	140	—	—	—	140	140
0539 - Miscellaneous	—	—	—	—	—	4
0540 - Employment and Legal Services	—	—	—	—	—	100
0541 - Business mobile	404	—	—	—	404	603
0542 - Furniture	12	—	—	—	12	—
0543 - Pension Contributions	1,243	—	—	—	1,243	1,244
0544 - Refund	(96)	—	—	—	(96)	2,756
Total	32,539	22,231	—	—	54,770	63,884

Governance costs

0523 - Legal fees	—	—	—	—	—	—
Total	—	—	—	—	—	—
EXPENDITURE TOTAL	32,539	22,231	—	—	54,770	63,884
GRAND TOTAL	11,214	(12,646)	2,000	—	567	(1,522)

This report dated: April 2022



Section A

Independent Examiner's Report

**Report to the trustees/
members of**

Charity Name
South Chard Church

**On accounts for the year
ended**

March 31st 2022

**Charity no
(if any)**

1158883

Set out on pages

1 to 2

(remember to include the page numbers of additional sheets)

I report to the trustees on my examination of the accounts of the above charity ("the Trust") for the year ended 31/03/2022.

**Responsibilities and
basis of report**

As the charity's trustees, you are responsible for the preparation of the accounts in accordance with the requirements of the Charities Act 2011 ("the Act").

I report in respect of my examination of the Trust's accounts carried out under section 145 of the 2011 Act and in carrying out my examination, I have followed all the applicable Directions given by the Charity Commission under section 145(5)(b) of the Act.

**Independent
examiner's statement**

I have completed my examination. I confirm that no material matters have come to my attention in connection with the examination which gives me cause to believe that in, any material respect:

- the accounting records were not kept in accordance with section 130 of the Charities Act; or
- the accounts did not accord with the accounting records; or
- the accounts did not comply with the applicable requirements concerning the form and content of accounts set out in the Charities (Accounts and Reports) Regulations 2008 other than any requirement that the accounts give a 'true and fair' view which is not a matter considered as part of an independent examination.

I have no concerns and have come across no other matters in connection with the examination to which attention should be drawn in this report in order to enable a proper understanding of the accounts to be reached.

Signed:

G Meyers

Date:

20/11/2022

Name:

Gregory Meyers

**Relevant professional
qualification(s) or body
(if any):**

Address:

28 Middlepeak Way, Sheffield

S13 9DL

SOUTH CHARD CHURCH

England & Wales - Charity number 1158883

Accounts



South Chard Church Trustees Annual Report 01 April 2020 to 31st March 2021

This is the sixth annual report from the trustee board of South Chard Church CIO which was formally registered in October 2014.

The spiritual life of South Chard Church is still under the care of a team leader, supported by a group of elders and leaders. At the start of this reporting period four trustees made up the trustee board, throughout the year, regular trustee meetings and one AGM have been held and minutes taken and filed. Due to personal circumstances one trustee has had to resign.

South Chard Church continues to be affiliated to Churches in Communities International and the Evangelical Alliance of Great Britain. These organisations are available to us for help and advice if required. We also work with Churches Together in Chard which is part of Churches Together in England.

During the reporting year South Chard Church has adapted to the challenges of living through a pandemic. The leaders and congregation have worked alongside various projects in the local community. The following is a breakdown of some of the areas the South Chard Church CIO is involved in.

Connection in Isolation – Meeting together for worship and mutual support has taken on a whole new meaning this year. In April 2019 we began to facilitate group gatherings primarily through Zoom. This has proved to be both challenging and rewarding. At the end of this reporting period we continue to meet virtually as a congregation weekly. Lifegroups also meet in this fashion. Whilst it has taken some people time to get used to, we have been able to use Zoom to meet for Bible studies, mutual support and check-ins. We have also been able to facilitate compassionate listening sessions (Restorative Practice) with those needing space to process personal issues. We recognise that isolation and loneliness has a dramatic impact on mental health and so being able to support people in this way has proved to be highly beneficial.

Pastoral Care – We have continued to provide pastoral support during the pandemic. A lot of this has taken place via phone calls or in a Covid safe way. Working with our local community response (Chard Covid 19 Support Group) some of our volunteers took on role of phone buddy, calling the most isolated in our community regularly to offer connection and a friendly voice.

Building Development - This year we were able to begin work on the roofs in the building. Since the fundraising began we have managed to raise over £11,000 towards this, which includes £3000 from Allchurches Trust. We have been able to use these funds to completely replace two of our roofs. We have also connected with SPARK Somerset who are in the process of training two of our volunteers in fundraising. We hope to submit further bids in the coming year in order to raise necessary funds to complete the work.

Community

Collaborative Community Response to Covid

Right at the beginning of the first lockdown we began to work in collaboration with other agencies and volunteers in a combined effort to support the most vulnerable in our community. The community response was amazing as volunteers manned phone lines daily, organising shopping; prescriptions collections and phone buddies. As a church we added our resources to the venture, our volunteers working on the phones and running errands etc. We also took on the role of “chief scrounger”. Essentially we sourced over a thousand items to help the group succeed. (eg. PPE equipment from the Samaritans’ purse; visors from Numatics; pens from the local scouts group; stationary from the local primary school). The community response was incredibly overwhelming.

Food Distribution

We have worked in various capacities over the past year to ensure that those who are struggling receive much needed food supplies. During the first lockdown we made a contribution of £600 towards the hot meals operation that had been set up to cook and deliver meals to the most vulnerable in our community. Later in the year we worked together with the One Team Chard to store, pack and distribute food parcels to over 250 households. Working with agencies such as schools, housing associations and village agents we have been able to identify those most in need and have delivered large food parcels on a monthly basis right to their door steps. Alongside this we source good quality frozen meals from the company “Cook” and deliver them weekly. This not only provides good food, but also a friendly face to those who otherwise are quite isolated.

We continue to work with our local food bank (the Lord’s Larder). A few of our congregation are regular volunteers; we helped them source extra shelving (from the local primary school); loaned them our large freezer; and make regular referrals to them when needed.

Clothes Bank

During the first lockdown a community group called "Take Flight" formed a clothes bank. Due to changing circumstances they needed new premises. As we were only using our building for food, we had the extra space and so for 6 months we provided them with storage. This meant that those running the bank were able to access much needed clothes and furniture whenever a need arose in the community. The clothes bank has since moved as we begin our work of deep cleaning in view of re opening later in the year.

Youth Initiative

A group of churches and charities have come together to form a team of detached youth workers. We have been part of that process. The team, when possible, have been going out into our local skate park to meet with children to play sports and chat. There have been some real concerns around child exploitation during the lockdown and it has been vital that our young people have had safe spaces where they can connect and have positive experiences.

Prison Work

Whilst our team have not been able to visit prisons this year, we have been able to send much needed literature to several prisons in our area. We will continue to support the chaplains in this way, reviewing the viability of prison visits as we move forward.

Training and policies

This year both our team leader and safeguarding lead refreshed their safe guarding training. Our team leader also attended restorative practice training and multimedia training. Two of our volunteers have also begun training in fundraising.

We have used this year to revisit all of our policies and ensure that they are up to date and applicable. This work is ongoing and is being carried out by one of our volunteers under the guidance of the trustee board.

Working with External Bodies

Our team leader is still a member of the One Team Chard, the Independent Advisory Group for the Police and the CiC (Churches in Communities) Council. The Independent Review into the death of an individual in our community was finished this year and we were able to facilitate meetings with the reviewer and a family member.

Oversees Support

This year we were able to send financial support to our contacts in Uganda who work in remote locations, often in real need. At Christmas we took up an offering and sent over £800 to a lady called Pastor Winnie who runs a small church and looks after orphans in her home. We have also provided financial and spiritual support to Pastor Moses who works close by. We continue to give monthly financial support to Alan and Jan Kilpatrick who are part of the Family Care Team for IRIS.

Chard Churches Together

Whilst most of our joint events have been cancelled this year, the church leaders have continued to meet together on Zoom. This has provided much needed support and a space for collaboration. We put together a joint online service of Christian Unity Service and have all been part of the joint community operation that has sought to look after the community of Chard during this difficult year.

Continuing the Work Together

It has been clear to us that volunteer agencies have worked remarkably well together this year. As we move towards an easing of lockdown we are all keen to ensure that this collaboration continues. We are part of a forum (Chard Connect) ran by SPARK Somerset, where many volunteer agencies come together to share and discuss how we can work together, sharing volunteers, resources, skills and advice.

We are beginning to consider how we can renovate some of our spaces to enable us to best serve the needs of our community – this will involve more fundraising as we decide which projects to move forward with in the coming year. The coming year will also see the building re-open for Sunday services and mid-week groups.

**South Chard Church
1158883**

End of Year Financial Statements

Year ending March 31st 2021

Statement of Financial Activities

	Unrestricted funds	Restricted funds	Endowment funds	Total funds	Prior year total funds
Incoming resources					
Incoming resources from generated funds	—	—	—	—	—
Voluntary income	59,707	—	—	59,707	62,471
Activities for generating funds	368	—	—	368	3,010
Incoming resources from charitable activities	2,285	—	—	2,285	6,460
Total income	62,361	—	—	62,361	71,943
Resources used					
Charitable activities	63,884	—	—	63,884	65,656
Governance costs	—	—	—	—	346
Total expenditure	63,884	—	—	63,884	66,003
Net income / (expenditure) resources before transfer	(1,522)	—	—	(1,522)	5,939
Transfers					
Gross transfers between funds - in	23,634	—	—	23,634	19,200
Gross transfers between funds - out	(23,634)	—	—	(23,634)	(19,200)
Other recognised gains / losses					
Gains / losses on investment assets	—	—	—	—	—
Gains on revaluation, fixed assets, charity's own use	—	—	—	—	—
Net movement in funds	(1,522)	—	—	(1,522)	5,939
Total funds brought forward	13,098	210	—	13,308	7,369
Total funds carried forward	11,576	210	—	11,786	13,308
Represented by					
Unrestricted					
General fund	674	—	—	674	468
Designated					
Administrator fund	—	—	—	—	40
Annual Expense fund	2,993	—	—	2,993	1,136
CAP fund	—	—	—	—	(98)
Children's Work fund	103	—	—	103	133
Church Weekend fund	—	—	—	—	2,599
Church maintenance fund	3,664	—	—	3,664	6,216
Ignite fund	—	—	—	—	—
India	—	—	—	—	—
Love Chard	150	—	—	150	—
Men's Ministry fund	90	—	—	90	90
Ministry School fund	—	—	—	—	—
Mission fund	—	—	—	—	40
Pappy Daniel India fund	—	—	—	—	—
Prisons Work	120	—	—	120	—
Savings	2,380	—	—	2,380	500
Special Offering fund	696	—	—	696	895
Tatworth Tots	167	—	—	167	167
Tithe fund	181	—	—	181	393
Uganda	5	—	—	5	147
Youth Worker fund	349	—	—	349	369
Restricted					
Manor House Fund	—	210	—	210	210

Balance sheet

Class and code	Description	This year	Last year
Current assets			
Z06	NatWest Current	11,902	13,400
Z07	NatWest Credit	(116)	(91)
	Total Current assets	11,786	13,308
Reserves			
	Excess / (deficit) to date	(1,522)	5,939
	Starting balances	13,308	7,369
	Total Reserves	11,786	13,308
Represented by funds			
	Unrestricted	674	468
	Designated	10,902	12,630
	Restricted	210	210
	Endowment	—	—
	Total	11,786	13,308

Statement of assets and liabilities

	General	Designated	Restricted	Endowment	This year	Last year
Current assets - Cash at bank and in hand						
NatWest Current -	790	10,902	210	—	11,902	13,400
NatWest Credit -	(116)	—	—	—	(116)	(91)
Totals	674	10,902	210	—	11,786	13,308
Grand total	674	10,902	210	—	11,786	13,308

Fund movement by type

	Opening	Incoming	Outgoing	Transfers	Gains/losses	Closing
AE - Annual Expense fund						
Designated	1,136	6,082	7,585	3,360	—	2,993
Sub-total for AE	1,136	6,082	7,585	3,360	—	2,993
Admin - Administrator fund						
Designated	40	1,050	6,240	5,150	—	—
Sub-total for Admin	40	1,050	6,240	5,150	—	—
CAP - CAP fund						
Designated	(98)	3	420	514	—	—
Sub-total for CAP	(98)	3	420	514	—	—
Children - Children's Work fund						
Designated	133	—	32	2	—	103
Sub-total for Children	133	—	32	2	—	103
Ignite - Ignite fund						
Designated	—	—	—	—	—	—
Sub-total for Ignite	—	—	—	—	—	—
Ind - India						
Designated	—	—	—	—	—	—
Sub-total for Ind	—	—	—	—	—	—
India - Pappy Daniel India f						
Designated	—	—	—	—	—	—

	Sub-total for India	—	—	—	—	—	—
LC - Love Chard							
Designated		—	240	140	50	—	150
	Sub-total for LC	—	240	140	50	—	150
Maint - Church maintenance f							
Designated		6,216	5,854	9,292	886	—	3,664
	Sub-total for Maint	6,216	5,854	9,292	886	—	3,664
Manor - Manor House Fund							
Restricted		210	—	—	—	—	210
	Sub-total for Manor	210	—	—	—	—	210
Men - Men's Ministry fund							
Designated		90	—	—	—	—	90
	Sub-total for Men	90	—	—	—	—	90
Mission - Mission fund							
Designated		40	755	1,775	980	—	—
	Sub-total for Mission	40	755	1,775	980	—	—
Prison - Prisons Work							
Designated		—	120	—	—	—	120
	Sub-total for Prison	—	120	—	—	—	120
SCSM - Ministry School fund							
Designated		—	—	—	—	—	—
	Sub-total for SCSM	—	—	—	—	—	—
Save - Savings							
Designated		500	—	1,619	3,500	—	2,380
	Sub-total for Save	500	—	1,619	3,500	—	2,380
SpecOff - Special Offering fun							
Designated		895	—	—	(198)	—	696
	Sub-total for SpecOff	895	—	—	(198)	—	696
Tithe - Tithe fund							
Designated		393	—	2,700	2,488	—	181
	Sub-total for Tithe	393	—	2,700	2,488	—	181
Tots - Tatworth Tots							
Designated		167	—	—	—	—	167
	Sub-total for Tots	167	—	—	—	—	167
Uganda - Uganda							
Designated		147	1,265	1,773	366	—	5
	Sub-total for Uganda	147	1,265	1,773	366	—	5
Weekend - Church Weekend fund							
Designated		2,599	1,662	2,536	(1,725)	—	—
	Sub-total for Weekend	2,599	1,662	2,536	(1,725)	—	—
Youth - Youth Worker fund							
Designated		369	—	11	(8)	—	349
	Sub-total for Youth	369	—	11	(8)	—	349
General - General fund							
Unrestricted		468	45,328	29,756	(15,367)	—	674
	Sub-total for General	468	45,328	29,756	(15,367)	—	674
	Grand total	13,308	62,361	63,884	—	—	11,786

Analysis of income and expenditure

	<u>Unrestricted</u>	<u>Designated</u>	<u>Restricted</u>	<u>Endowment</u>	<u>Total</u>	
					<u>This year</u>	<u>Last year</u>
INCOME AND ENDOWMENTS						
Incoming resources from generated funds						
0108 - Bank Interest	—	—	—	—	—	—
Total	—	—	—	—	—	—
Incoming resources from generated funds - Voluntary income						
0101 - General Offering	3,780	—	—	—	3,780	19,675
0102 - Standing Orders	34,279	100	—	—	34,379	18,261
0103 - Special Offering	—	800	—	—	800	3,842
0104 - Special Gifts	650	11,952	—	—	12,602	5,098
0105 - Standing Orders for Specific Purposes	15	1,843	—	—	1,858	7,435
0109 - Gift Aid	6,288	—	—	—	6,288	8,158
0118 - Children's Offering	—	—	—	—	—	—
Total	45,012	14,695	—	—	59,707	62,471
Incoming resources from generated funds - Activities for generating funds						
0107 - Fundraising	11	357	—	—	368	2,910
0110 - Building Hire	—	—	—	—	—	100
Total	11	357	—	—	368	3,010
Incoming resources from charitable activities						
0106 - Kids & Co	—	—	—	—	—	618
0111 - Shop	—	—	—	—	—	—
0112 - Conference registration	—	—	—	—	—	260
0113 - Miscellaneous	0	—	—	—	0	1,002
0114 - Men's Ministry	—	—	—	—	—	188
0115 - Church Weekend payment	—	—	—	—	—	4,255
0116 - Repayment	305	1,979	—	—	2,285	137
0117 - SCSM	—	—	—	—	—	—
Total	305	1,979	—	—	2,285	6,460
INCOME TOTAL	45,328	17,032	—	—	62,361	71,943

EXPENDITURE

Charitable activities

0501 - Gas	780	—	—	—	780	1,256
0502 - Electricity	306	—	—	—	306	841
0503 - Water	444	—	—	—	444	517
0504 - Telephone	—	—	—	—	—	119
0505 - Broadband	582	—	—	—	582	693
0506 - Website	100	—	—	—	100	455
0507 - Building and Contents Insurance	1,433	—	—	—	1,433	1,391
0508 - Refurbishment and Maintenance	1,037	10,912	—	—	11,949	545
0509 - Housekeeping	—	—	—	—	—	67
0510 - Office Equipment	33	—	—	—	33	29
0511 - Stage equipment and repairs	180	—	—	—	180	467
0512 - Shop	—	—	—	—	—	—
0513 - Outreach	—	—	—	—	—	—
0514 - Hospitality	—	—	—	—	—	31
0515 - Giving	480	9,841	—	—	10,321	7,492
0516 - Leader Salary	19,315	—	—	—	19,315	19,142
0517 - Administrator's salary	—	6,240	—	—	6,240	6,240
0518 - Youth Worker salary	—	—	—	—	—	—
0519 - Domestic salary	—	—	—	—	—	—
0520 - Pastor expenses	—	—	—	—	—	615
0521 - Youth Worker expenses	—	—	—	—	—	112
0522 - Volunteer expenses	—	317	—	—	317	921
0524 - Tax	—	4,015	—	—	4,015	3,702
0525 - DBS checks	—	—	—	—	—	49
0526 - Training	79	—	—	—	79	688
0527 - Accountants fees	198	—	—	—	198	442
0528 - Resources	900	44	—	—	945	871
0529 - Food and Drink	323	—	—	—	323	1,215
0530 - Office Supplies	—	—	—	—	—	3
0531 - Postage	18	—	—	—	18	1
0532 - Petty Cash	—	—	—	—	—	—
0533 - Printing	93	—	—	—	93	232
0534 - Mission	—	—	—	—	—	9,925
0535 - Licences	344	—	—	—	344	467
0536 - Subscriptions	979	—	—	—	979	824
0537 - Bank charges	30	—	—	—	30	30
0538 - Retreats/Visits/Counselling	140	—	—	—	140	2,586
0539 - Miscellaneous	4	—	—	—	4	267
0540 - Employment and Legal Services	100	—	—	—	100	1,144
0541 - Business mobile	603	—	—	—	603	550
0542 - Furniture	—	—	—	—	—	520
0543 - Pension Contributions	1,244	—	—	—	1,244	1,190
0544 - Refund	—	2,756	—	—	2,756	—
Total	29,756	34,128	—	—	63,884	65,656

Governance costs

0523 - Legal fees	—	—	—	—	—	346
Total	—	—	—	—	—	346

EXPENDITURE TOTAL	29,756	34,128	—	—	63,884	66,003
GRAND TOTAL	15,572	(17,095)	—	—	(1,522)	5,939

This report dated: April 2021



Section A

Independent Examiner's Report

**Report to the trustees/
members of**

Charity Name
South Chard Church

**On accounts for the year
ended**

March 31st 2021

**Charity no
(if any)**

1158883

Set out on pages

1 to 2

(remember to include the page numbers of additional sheets)

I report to the trustees on my examination of the accounts of the above charity ("the Trust") for the year ended 31/03/2020.

**Responsibilities and
basis of report**

As the charity's trustees, you are responsible for the preparation of the accounts in accordance with the requirements of the Charities Act 2011 ("the Act").

I report in respect of my examination of the Trust's accounts carried out under section 145 of the 2011 Act and in carrying out my examination, I have followed all the applicable Directions given by the Charity Commission under section 145(5)(b) of the Act.

**Independent
examiner's statement**

I have completed my examination. I confirm that no material matters have come to my attention in connection with the examination which gives me cause to believe that in, any material respect:

- the accounting records were not kept in accordance with section 130 of the Charities Act; or
- the accounts did not accord with the accounting records; or
- the accounts did not comply with the applicable requirements concerning the form and content of accounts set out in the Charities (Accounts and Reports) Regulations 2008 other than any requirement that the accounts give a 'true and fair' view which is not a matter considered as part of an independent examination.

I have no concerns and have come across no other matters in connection with the examination to which attention should be drawn in this report in order to enable a proper understanding of the accounts to be reached.

Signed:

G Meyers

Date:

22/06/2021

Name:

Gregory Meyers

**Relevant professional
qualification(s) or body
(if any):**

Address:

28 Middlepeak Way, Sheffield

S13 9DL

Only complete if the examiner needs to highlight material matters of concern (see CC32, Independent examination of charity accounts: directions and guidance for examiners).

Give here brief details of any items that the examiner wishes to disclose.

[Empty disclosure box]