

THE WESTMILL SUSTAINABLE TRUST

England & Wales · Charity number 1158820

Details

Other names	WESTMILL SUSTAINABLE ENERGY TRUST
Status	Registered
Legal form	CIO
Registered	2014-10-09
Register	View on the Charity Commission register

Contact

Address	8 Maple Gardens Milton Abingdon OX14 4GP
Phone	01235831980
Email	visit@weset.org
Website	www.weset.org

Activities

Objects: THE OBJECTS ARE TO PROMOTE THE ADVANCEMENT OF ENVIRONMENTAL PROTECTION OR IMPROVEMENT FOR THE BENEFIT OF THE PUBLIC IN PARTICULAR BUT NOT EXCLUSIVELY WITHIN THE AREA OF BENEFIT BY PROMOTING THE DEPLOYMENT OF SUSTAINABLE ENERGY, PROMOTING EDUCATION IN THE DEPLOYMENT OF SUSTAINABLE ENERGY AND MAKING GRANTS TO SUCH PERSONS OR ORGANISATIONS AS THE TRUSTEES SEE FIT IN ORDER TO PROMOTE AND ENCOURAGE THE DEPLOYMENT OF SUSTAINABLE ENERGY.

Activities: Promotion of sustainable energy and energy efficiency, especially in the region of Shrivenham and Watchfield, through events, grants and guided tours of Westmill Wind Farm and Solar Park.

Classification

- **How:** Makes Grants To Individuals, Makes Grants To Organisations, Provides Advocacy/advice/information
- **What:** Education/training, Arts/culture/heritage/science
- **Who:** The General Public/mankind

Geography

- Gloucestershire
- Hampshire
- Oxfordshire
- West Berkshire
- Wiltshire

Finances

Period end	Income	Expenditure	Assets	Employees
2024-12-31	£36,469	£39,806	-	-
2023-12-31	£28,167	£47,066	-	-
2022-12-31	£37,311	£32,363	-	-
2021-12-31	£56,158	£54,770	-	-
2020-12-31	£38,356	£48,462	-	-

Trustees

Name	Role	Appointed
MIKE BLANCH	Chair	2014-10-09
Alicia Katarina de Haldevang		2022-10-05
CHRIS CHURCH		2014-10-09
Cecilia Park Olley		2025-01-15
Dr Warren Hicks		2016-11-22
FRAN TATTERSALL		2014-10-09
Liam Wilson		2020-05-18
Mark Andrew Foyle		2024-04-19
ROBERT TAPSFIELD		2025-01-15

THE WESTMILL SUSTAINABLE TRUST

England & Wales - Charity number 1158820

Accounts

Charity number: 1158820

Company number: CE003083

The Westmill Sustainable Energy Trust
(WeSET)
A Charitable Incorporated Organisation



TRUSTEES' REPORT AND FINANCIAL STATEMENTS
FOR THE YEAR ENDED 31 DECEMBER 2024

CONTENTS

CONTENTS	2
REFERENCE AND ADMINISTRATIVE DETAILS OF THE CHARITY, ITS TRUSTEES AND ADVISERS	3
TRUSTEES' ANNUAL REPORT	4
INDEPENDENT EXAMINERS REPORT TO THE TRUSTEES OF THE WESTMILL SUSTAINABLE ENERGY TRUST	10
RECEIPTS AND PAYMENTS ACCOUNT	11
BALANCE SHEET	12
NOTES TO THE FINANCIAL STATEMENTS	13

REFERENCE AND ADMINISTRATIVE DETAILS OF THE CHARITY, ITS
TRUSTEES AND ADVISERS
FOR THE YEAR ENDED 31 DECEMBER 2024

Trustees

Cecilia Park Olley

Chris Church

Fran Tattersall

Liam Wilson

Mike Blanch, Chair

Robert Tapsfield

Warren Hicks

Mark Foyle (appointed 19/04/2024)

Alicia Katarina de Haldevang

Charity registered number

1158820

Registered office

8 Maple Gardens, Milton, Abingdon, OX14 4GP

Website

<https://www.weset.org/>

Independent Examiner

J.R. Mercer Associates Ltd

48 Chelworth Road. Cricklade. Wilts. SN6 6HD

Banker

The Co-operative Bank

TRUSTEES' ANNUAL REPORT

FOR THE YEAR ENDED 31 DECEMBER 2024

Introduction

The Trustees present their report and financial statements for the year ended 31 December 2024 under the Charities Act 2011, together with the unaudited financial statements for the year, and confirm that the latter comply with the requirements of the Charities SORP (FRS 102) and the Charity's Memorandum and Articles of Association.

Westmill Energy Sustainable Energy Trust is a registered charity in England and Wales (number 1158820).

1. Objectives and activities

Objectives

The objectives of The Westmill Sustainable Trust are to promote the advancement of environmental protection or improvement for the benefit of the public, in particular but not exclusively, within 25 miles of Westmill Wind and Solar Farms (SN6 8TH) by promoting the deployment of sustainable energy, promoting education in the deployment of sustainable energy and making grants to such persons or organisations as the trustees see fit in order to promote and encourage the deployment of sustainable energy.

Education

Work and projects

Work this year has been focussed on making new contacts in schools and expanding our education packs with lesson packs and activities including:

- Carbon footprint calculation (personal and industrial)
- Boxed up STEM activities (mini wind turbines and solar powered vehicles)
- Debating activity sheets (KS2/3 & 4/5)

White Horse Hill Signage

We collaborated with The National Trust and English Heritage to design a replacement for the existing panoramic information board on White Horse Hill to include the wind farm and solar park at Westmill. Both NT & EH approved drafts at the end of 2024, with graphics finalised with printing and installation in 2025. This has been installed next to the much loved and preserved original wooden board.



Fig 1. Graphics for installation board

TRUSTEES' ANNUAL REPORT (Continued)



Fig 2. Installed information board

Collaborations and Events

The Beyond COP Symposium 31st January 2024

We attended the 'Beyond COP 21 Symposium' event at Wychwood school on 31st January. We had a stand and several sessions during the day where children from various schools explored the exhibition, spoke to exhibitors, and experimented with demo models. We also took part in the discussion panel entitled 'Youth Voices on Climate Change'.

<https://www.beyondcop21symposium.org/>

The Festival of Tomorrow 16th - 17th February 2024

Since first attending in 2021, the fabulous Festival of Tomorrow (FoT) has grown and grown; the event now runs for 9 days at several venues and this year over 21,000 people experienced the festival. So, it was with genuine anticipation that I set up at the Deanery in Swindon for the grand finale on 16th and 17th February. It was a non-stop couple of days speaking to children, families and visitors of all ages and a great opportunity to share what we have to offer, our educational resources, site visits, and school visits. It is always very rewarding to speak to people we met last year at FoT who have since visited the site and were excited to share their experiences as well as gaining many new contacts. In fact, in the week after the festival we took 4 new bookings for on and off-site visits with more enquiries received since. We even feature in their video review! Spot the Lego wind farm at 0.35 secs.

<https://x.com/FestOfTomorrow/status/1759152569715249452?s=20>



Fig 3. The Festival of Tomorrow display stall

TRUSTEES' ANNUAL REPORT (Continued)

Wantage Earth Day event on 20th April 2024

We were invited to attend Wantage Earth day in April; the event had clearly faced some unexpected challenges due to the illness of one of the key council members organising the day; as a result, there were far fewer groups involved, and the event itself largely revolved around sustainable wantage. It did mean we stood out! We were able to pick a prime spot by the entrance to the main venue where a queue was forming for a clothing exchange organised by Sustainable Wantage. As a result, individuals and families were filtered past us and we were able to speak to a large number of parents, teachers, group leaders and some councillors about what we offer and had follow up contact after the event – one of these with the head of Faringdon Community College who was interested from a variety of perspectives including KS3, ECT and possible visits.

Earth Summit at Coleshill - 20th May – 24th May 2024

As ever, this was a very well attended event with several local schools enjoying 4 days of workshops. We had a great deal of good feedback from teachers and from the children themselves who enjoyed experimenting our wind and solar demo models and running across the field with our handheld turbines in full view of the Westmill turbines themselves. We were able to take note of all attending schools and followed up with them all after the event. A number have since contacted us regarding site visits and school visits and we have had some bookings off the back of this.

Great Barn Festival – Saturday 14th and Sunday 15th September

Footfall was good at this year GBF especially on the beautifully sunny Saturday and we managed to bag an excellent position next to the puppet show and storyteller, so we were able to attract many children and families! We were joined by Energy4all and together we ran a popular pinwheel making activity and made some good new contacts. We had two bookings straight away (1st King Alfreds Cubs Wantage and The Hendreds C of E School) and had several further enquiries after the event.



Fig 4. Great Barn Festival event and stall

New College Swindon Monday 18th November

This was our 4th year visiting New College Swindon. We manned our stand in the foyer, spoke to passers-by, and gave a more formal presentation to a year 13 Environmental science class with a particular interest in the impact of renewables and biodiversity. We have been working with New College's Head of Environmental Sciences to devise a list of essential skills and characteristics for young people who may be thinking about working in the renewable energy industry. We discussed possibility of expanding this and linking these attributes to KS5 activities e.g. debating. This was the prompt for developing our new debating activity sheets.

TRUSTEES' ANNUAL REPORT (Continued)

LCH Grant Application for new printed materials and event resources

In March we submitted successful application for LCH grant for £1,500 (including an application on behalf of WeSET, Westmill Wind and Westmill Solar) to be used for promotional materials specifically for education for use and distribution on visits and at events. These have been designed and with our new website and social media information to be printed in April 2025.

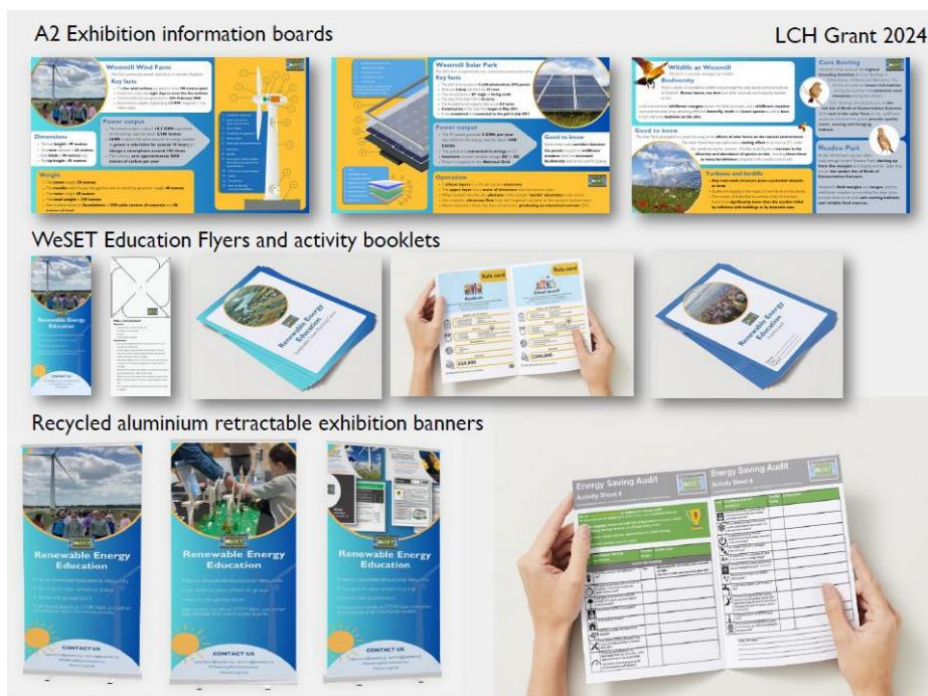


Fig 5. Illustration of promotional materials

New Assistant Education Officer

A highlight of the year was the appointment of a second contracted education officer in October thanks to funding from the Solar Co-operative. John Helsby, an experienced primary school teacher, has already had a hugely positive impact. With 2 Education Officers we are now better able to expand our education pack and associated resources whilst nurturing existing relationships with schools and building new ones. It is also a huge advantage when attending events as we are better able to deliver workshops and activities. The benefit will be seen more evident across 2025 so stay tuned!

Visits

2024 saw Westmill tours continue to be very much in demand. Numbers of visitors to the site reached their highest amount since 2018. And the total number of people visiting Westmill since the site began operating reached just shy of 17,000.

Tours around Westmill continue to prove popular with the academic sector. Visits from educational establishments like Cranfield University, Imperial College London, Activate Learning College, Abingdon & Witney College plus several local primary schools. Overseas academic groups also made a trip to Westmill including the ESCP Business School, the Saint Joseph Group and the Lycée du Vimeu School, all from France, plus St Oliver's Community College from the Republic of Ireland.

TRUSTEES' ANNUAL REPORT (Continued)

The ESCP Business School found its visit very engaging. It gained "a clear understanding of how such a facility operates" and "learned about the real-world challenges involved in building a project that has the local community at its centre. Overall, the site visit was a very memorable experience!"

Many cub and scout groups visited Westmill during 2024, and there were also visits from private sector organisations including Oxford Printmakers (OPC), a fine art print workshop based in East Oxford. In 2023 OPC applied for a grant from Westmill Solar Co-operative to install secondary glazing and destratification fans to improve the energy efficiency of its workshop, primarily to create better heat retentive measures. To recognise the financial support provided by Westmill Solar, OPC decided to centre its new exhibition around a theme called "Renew", as a nod to renewable energy, with the work created during its summer visit to Westmill as the centrepiece.

In addition to the many groups visiting during 2024, our regular open public tours continue to appeal. And our visitors continue to find our tours appealing: "Right from the front gate, the guides were warm and welcoming. The tour was fascinating, and our guide's knowledge of the science, the logistics and the ecological impact was spot on", said one attendee.

93% of visitors polled in a feedback questionnaire said it was likely that they would recommend the tours to others.

2. People matter

The Trustees would like to thank all those who volunteered time and effort to make WeSET so successful. It has been a difficult year, and we really appreciate your support and patience.

3. We want to give

We are happy to share our documents as examples of what is needed to become a CIO – every energy scheme should have one!

4. You

If what you have read interests you in anyway, please get in touch and get involved. We welcome views on how we can best to promote the sustainable use of energy. please contact: Mike Blanch at michaelblanch@btinternet.com

5. Structure, governance, and management

The Westmill Sustainable Trust is a registered charitable incorporated organisation (CIO), charity number 1158820 constituted by a constitution dated 18 June 2014. Previously it had been a registered Charity, charity number 1132379, constituted by trust deed dated 27 January 2009. The

CIO charitable structure was not available when WeSET was originally formed, and the 1132379 charity was formerly closed in January 2019.

As far as possible 65% of Trustees should be members of either Westmill Wind Farm or Westmill Solar Farm, and 65% of Trustees should reside within 25 miles of Westmill Wind Farm (SN6 8TH).

6. Recruitment and appointment of new trustees.

Applications to be a trustee are welcome at any time. Appointment of new trustees is subject to meeting the eligibility for trusteeship in the constitution and agreement, and a majority vote in favour by the charity trustees who must have regard to the skills, knowledge and experience needed for the effective administration of the charity.

TRUSTEES' ANNUAL REPORT (Continued)

7. MOU with Westmill Solar Co-operative Limited and Westmill Wind Farm Co-operative limited

WeSET agreed a memorandum of understanding (MOU) with Westmill Solar Co-operative Limited and Westmill Wind Farm Cooperative Limited formalising where we share an overall vision and a commitment to promote renewable energy and sustainable lifestyles and defining a set of shared objectives. It included:

- A three-year rolling commitment of donations from the Coops and the related business planning process to determine the donations.
- Establishing a Liaison Group, and
- Reporting

8. Financial Review

As noted in 2023, income rose back up in 2024 due to the timing of instalments paid through the MOU with our Coop partners. FIT payments paused in 2024 with missed meter submissions however we expect to recover these in 2025.

Payment from the Coops was also received for their contribution to the 2023 open day, artificially lowering costs. Where costs were saved in 2024 due to no open day, general costs increased along with WeSET giving £6,000 of grants for energy surveys.

We remain in a strong financial position with limited restrictions on funds.

8.1 Policy on reserves

It is the policy of the charity to seek to maintain reserves of £10,000 to maintain contracts with contractors delivering work especially in the beginning months of the financial year before expected income is received.

8.2 Risk management

The fixed operating costs of the charity are primarily fees to consultants. The Trustees consider that this prudent closing cash balance policy minimises the risks to which the charity is exposed.

Approved by the Board of Trustees on 9 September 2025 and signed on its behalf by:



Mike Blanch, Chair

Independent examiners report to the Trustees of The Westmill Sustainable Energy Trust

I report to the charity Trustees on my examination of the accounts of the company for the year ended 31 December 2024, which are set out on pages 11 to 18.

This report is made solely to the charitable company's Trustees. My independent examiner's work has been undertaken so that I might state to the charity's Trustees those matters I am required to state to them in an Independent examiner's report and for no other purpose. To the fullest extent permitted by law, I do not accept or assume responsibility to anyone other than the charity, the charity's members as a body and the charity's Trustees as a body, for my independent examiner's work, for this report or for the opinions I have formed.

Responsibilities and basis of report

As the charity's Trustees you are responsible for the preparation of the accounts.

Having satisfied myself that the accounts of the Charity are not required to be audited under Part 16 of the 2006 Act and are eligible for independent examination, I report in respect of my examination of the Charity's accounts carried out under section 145 of the Charities Act 2011 ('the 2011 Act'). In carrying out my examination I have followed the Directions given by the Charity Commission under section 145(5)(b) of the 2011 Act.

Independent examiner's statement

I have completed my examination. I can confirm that no matters have come to my attention in connection with the examination giving me cause to believe:

1. accounting records were not kept in respect of the company as required by section 386 of the 2006 Act; or
2. the accounts do not accord with those records; or
3. the accounts do not comply with the account requirements of section 396 of the 2006 Act other than any requirement that the accounts give a 'true and fair' view which is not a matter considered as part of an independent examination; or
4. the accounts have not been prepared in accordance with the methods and principles of the Statement of Recommended Practice for accounting and reporting by charities [applicable to charities preparing their accounts in accordance with the Financial Reporting Standard applicable in the UK and Republic of Ireland (FRS 102)].

I have no concerns and have come across no other matters in connection with the examination to which attention should be drawn in the report in order to enable a proper understanding of the accounts to be reached.

Signed:



Dated: 09/07/2025

For JR Mercer Associates Ltd

RECEIPTS AND PAYMENTS ACCOUNT
FOR THE YEAR ENDED 31 DECEMBER 2024

		Unrestricted funds 2024 £	Restricted funds 2024 £	Total funds 2024 £	Total funds 2023 £
Receipts from:					
Donations	2	34,969	-	34,969	25,711
Grants	3	-	1,500	1,500	-
Investments	4	-	-	-	1,456
Other Trading Activities	5	-	-	-	1,000
Total receipts		34,969	1,500	36,469	28,167
Payments for:					
Charitable activities	6	(33,267)	-	(33,267)	(42,565)
Other	7	(6,539)	-	(6,539)	(4,501)
Total payments		(39,806)	-	(39,806)	(47,066)
Net of receipts/(payments)		(4,836)	1,500	(3,336)	(18,900)
Cash funds this year		21,710	1,950	23,660	26,996

The notes on pages 13 to 18 form part of these financial statements.

BALANCE SHEET


FOR THE YEAR ENDED 31 DECEMBER 2024

Charity number: 1158820

	Notes	2024 £	2023 £
Fixed assets			
Fixed assets	8	14,562	15,447
Investments	9	9,137	9,137
Current assets			
Cash at bank and in hand		23,660	26,996
Net assets		<u>47,359</u>	<u>51,580</u>
Charity funds			
Restricted funds	10	1,950	450
Unrestricted funds	10	45,409	51,130
Total funds		<u>47,359</u>	<u>51,580</u>

The Trustees consider that the Charity is entitled to exemption from the requirement to have an audit under the provisions of section 477 of the Companies Act 2006 ("the Act") and members have not required the Charity to obtain an audit for the year in question in accordance with the section 476 of the Act.

The financial statements were approved and authorised for issue by the Trustees on 9 September 2025 and signed on its behalf by:



Mike Blanch, Chair

The notes on pages 13 to 18 form part of these financial statements.

NOTES TO THE FINANCIAL STATEMENTS

FOR THE YEAR ENDED 31 DECEMBER 2024

1. Accounting policies

The Westmill Sustainable Energy Trust is a charitable incorporated organisation (registered charity number 1158820). Its registered office and principal place of business is 8 Maple Gardens, Milton, Abingdon, EX14 4GP.

1.1 Basis of preparation of financial statements

The financial statements have been prepared in accordance with Accounting and Reporting by Charities: Statement of Recommended Practice applicable to charities preparing their accounts in accordance with the Financial Reporting Standard applicable in the UK and Republic of Ireland (FRS 102) (effective 1 January 2015) - Charities SORP (FRS 102)), the Financial Reporting Standard applicable in the UK and Republic of Ireland (FRS 102), the Charities Act 2011. The financial statements have been prepared under payments and receipts basis.

The Westmill Sustainable Energy Trust meets the definition of a public benefit entity under FRS 102.

1.2 Going concern

These financial statements have been prepared on a going concern basis, which the Trustees consider to be appropriate as a result of projections prepared, which together with the level of working capital and realisable investments available indicate the charity will be able to operate within the facilities currently available. There are no material uncertainties about the Charity's ability to continue. The financial statements do not include any adjustments that would result from the going concern basis becoming non-applicable.

1.3 Payments and receipts basis

Payments and receipts are recognised within the accounts on the date of transaction.

1.4 Investments

Investments of shares within Westmill Wind Farm are stated at historic cost.

1.5 Taxation

As a registered charity, The Westmill Sustainable Energy Trust is entitled to taxation exemptions on all its income and gains, properly applied for its charitable purposes.

1.6 Depreciation of Fixed Assets

Depreciation is provided to write off the cost of tangible fixed assets owned over their anticipated useful economic life (UEL) as follows:

Solar PV Panels - 25 years straight line

1.6 Fund accounting

Unrestricted funds are available for use at the discretion of the Trustees in the furtherance of the general objectives of the Charity.

Restricted funds are funds which are to be used in accordance with specific instructions imposed by donors or which have been raised by the Charity for a particular purpose. The aim and use of each restricted fund is set out in the notes of the financial statements.

Investment income and gains are allocated to the appropriate fund.

NOTES TO THE FINANCIAL STATEMENTS
FOR THE YEAR ENDED 31 DECEMBER 2024 (continued)

2. Income from donations

	Unrestricted funds 2024 £	Restricted funds 2024 £	Total funds 2024 £	Total funds 2023 £
Donations	34,969	-	34,969	25,711
	<hr/>	<hr/>	<hr/>	<hr/>
	34,969	-	34,969	25,711

3. Grants

	Unrestricted funds 2024 £	Restricted funds 2024 £	Total funds 2024 £	Total funds 2023 £
Low Carbon Hub	-	1,500	1,500	-
	<hr/>	<hr/>	<hr/>	<hr/>
	-	1,500	1,500	-

4. Investment income

	Unrestricted funds 2024 £	Restricted funds 2024 £	Total funds 2024 £	Total funds 2023 £
Feed In Tarriff	-	-	-	1,456
Dividend	-	-	-	-
	<hr/>	<hr/>	<hr/>	<hr/>
	1,456	-	1,456	1,145

5. Other Trading Activities

	Unrestricted funds 2024 £	Restricted funds 2024 £	Total funds 2024 £	Total funds 2023 £
Educational Projects	-	-	-	1,000
	<hr/>	<hr/>	<hr/>	<hr/>
	-	-	-	1,000

NOTES TO THE FINANCIAL STATEMENTS
FOR THE YEAR ENDED 31 DECEMBER 2024 (continued)

6. Charitable activities

	Unrestricted funds 2024 £	Restricted funds 2024 £	Total funds 2024 £	Total funds 2023 £
Education	(22,202)	-	(22,202)	(17,418)
Visits	(13,565)	-	(13,565)	(9,111)
Events	8,500	-	8,500	(16,036)
Grants and donations	(6,000)	-	(6,000)	-
	<u>(33,267)</u>	-	<u>(33,267)</u>	<u>(42,565)</u>

7. Other costs

	2024 £	2023 £
Independent Examiner's fees	(840)	(780)
Premises costs	(956)	(1,332)
Administration costs	(4,501)	(2,329)
Sundry costs	<u>(242)</u>	<u>(60)</u>
	(6,539)	(4,501)
Depreciation	<u>(885)</u>	<u>(885)</u>
	<u>(7,424)</u>	<u>(5,386)</u>

8. Staff costs

During 2024, WeSET had no employees (2023: 0). The progression of WeSET's objectives was achieved by its Trustees, contractors, and volunteers.

NOTES TO THE FINANCIAL STATEMENTS
FOR THE YEAR ENDED 31 DECEMBER 2024 (continued)

9. Fixed assets

	Solar Panels
Cost	
As at 1 January 2024	<u>22,142</u>
As at 31 December 2024	<u>22,142</u>
Depreciation	
As at 1 January 2024	6,695
Charge for the period	<u>885</u>
As at 31 December 2024	<u>7,580</u>
Net book value	
As at 1 January 2024	<u>15,447</u>
As at 31 December 2024	<u>14,562</u>

10. Investments

Westmill Wind Farm Shares	9,137
---------------------------	-------

NOTES TO THE FINANCIAL STATEMENTS
FOR THE YEAR ENDED 31 DECEMBER 2024 (continued)

11. Statement of funds

Statement of funds - current year

	Balance at 1 January 2024	Income	Expenditure	Transfer	Balance at 31 December 2024
Unrestricted funds					
Unrestricted funds	51,130	34,969	(40,691)	-	45,409
Restricted funds					
People's Power Station live website enhancement	450	-	-	-	450
Carbon Hub	-	1,500	-	-	1,500
	450	1,500	-	-	1,950
	51,580	36,469	(40,691)	-	47,359

Restricted funds

The website enhancement was to install a live dashboard on their website showing real time energy production.

The Low Carbon Hub grant is for printing informational and promotional materials for WeSET to improve engagement at the increasing number of shows and symposia attended by the education officers.

NOTES TO THE FINANCIAL STATEMENTS
FOR THE YEAR ENDED 31 DECEMBER 2024 (continued)

Statement of funds - prior year

	Balance at 1 January 2023	Income	Expenditure	Transfers	Balance at 31 December 2023
Unrestricted funds					
Unrestricted funds	70,375	28,167	(46,752)	(659)	51,130
Restricted funds					
People's Power Station live website enhancement	450	-	-	-	450
Low Carbon Hub (EPQ)	540	-	(1,199)	659	-
	(990)	-	(1,199)	659	450
	71,365	28,167	(47,951)	-	51,580

12. Analysis of net assets between funds

	Unrestricted funds 2024 £	Restricted funds 2024 £	Total funds 2024 £
Fixed assets	14,562	-	14,562
Investments	9,137	-	9,137
Current assets	21,710	1,950	23,660
	45,509	1,950	47,359

THE WESTMILL SUSTAINABLE TRUST

England & Wales - Charity number 1158820

Accounts

Charity number: 1158820

The Westmill Sustainable Energy Trust
(WeSET)
A Charitable Incorporated Organisation



TRUSTEES' REPORT AND FINANCIAL STATEMENTS
FOR THE YEAR ENDED 31 DECEMBER 2023

CONTENTS

CONTENTS	2
REFERENCE AND ADMINISTRATIVE DETAILS OF THE CHARITY, ITS TRUSTEES AND ADVISERS	3
TRUSTEES' ANNUAL REPORT	4
INDEPENDENT EXAMINERS REPORT TO THE TRUSTEES OF THE WESTMILL SUSTAINABLE ENERGY TRUST	10
RECEIPTS AND PAYMENTS ACCOUNT	11
BALANCE SHEET	12
NOTES TO THE FINANCIAL STATEMENTS	13

REFERENCE AND ADMINISTRATIVE DETAILS OF THE CHARITY, ITS
TRUSTEES AND ADVISERS
FOR THE YEAR ENDED 31 DECEMBER 2023

Trustees

Alicia de Haldevang

Cecilia Park Olley

Chris Church

Fran Tattersall

Liam Wilson

Mike Blanch, Chair

Paul Beattie (retired 05/09/2023)

Robert Tapsfield

Warren Hicks

Mark Foyle (appointed 28/09/2023)

Charity registered number

1158820

Registered office

8 Maple Gardens, Milton, Abingdon, OX14 4GP

Website

<https://www.weset.org/>

Independent Examiner

J.R. Mercer Associates Ltd

48 Chelworth Road. Cricklade. Wilts. SN6 6HD

Banker

The Co-operative Bank

TRUSTEES' ANNUAL REPORT FOR THE YEAR ENDED 31 DECEMBER 2023

Introduction

The Trustees present their report and financial statements for the year ended 31 December 2023 under the Charities Act 2011, together with the unaudited financial statements for the year, and confirm that the latter comply with the requirements of the Charities SORP (FRS 102) and the Charity's Memorandum and Articles of Association.

Westmill Energy Sustainable Energy Trust is a registered charity in England and Wales (number 1158820).

1. Objectives and activities

Objectives

The objectives of The Westmill Sustainable Trust are to promote the advancement of environmental protection or improvement for the benefit of the public, in particular but not exclusively, within 25 miles of Westmill Wind and Solar Farms (SN6 8TH) by promoting the deployment of sustainable energy, promoting education in the deployment of sustainable energy and making grants to such persons or organisations as the trustees see fit in order to promote and encourage the deployment of sustainable energy.

Education

Resources and projects

2023 has been a busy year for WeSET producing educational materials. We've produced plans and materials for the next 2 academic years (23/24 & 24/25) including new lessons and activity sheets as well as a clear strategy to get more schools on site and more visits to schools. KS4 materials and case studies for GCSE were created in preparation for launch in 2024. In response to feedback from teachers we worked on specific materials to add to our education packs. These included short, narrated video presentations based on our existing lessons but more 'bitesize' 15-30 minutes and all narrated so that teachers need only play and pause, alongside the provision of supporting notes.



Fig 1. Screenshots of narrated video presentations.

To increase awareness of what WeSET can offer, flyers were produced for schools highlighting our tours, virtual tours, school visits, workshops, online materials etc. These were sent through an email

TRUSTEES' ANNUAL REPORT

campaign after October half term 2023. We plan to have these available as a physical copy at future events that get the highest levels of engagement.

New interpretation boards were installed on new lecterns on site as well as reaching out to National Trust/English Heritage to discuss collaboration on a new graphic interpretation site sign at The White Horse to include information about Westmill Wind and Solar.



Fig 2. New interpretation boards installed on site.

Constantly looking to improve our offerings we adapted our current self-guided tour information to create further age specific self-guided tours including maps and route suggestions and links to further information. These also all have links to more detailed content and Q&A as well as age-appropriate educational materials.

Schools and groups

Visits

Again in 2023 we welcomed a wide range of groups to site including several local Beaver and Cub Scouts, Swindon Guides, Imperial College and many schools, local, further afield and one international school from Paris.

We also held a Schools Open Day for Key Stage 2 pupils linked to STEM. The event was aimed at local primary and preparatory schools. We had some excellent feedback on the day from both children and teachers and importantly, the teachers expressed an interest in attending an annual event as well as WeSET coming to see them in their schools to run workshops.

		Group/class 1	Group/class 2	Group/class 3
Session 1	10:00 – 11:00	Workshop activity	Solar & biodiversity	Wind farm tour
Session 2	11:15 – 12:15	Wind farm tour	Workshop activity	Solar & biodiversity
Lunch	12:15 – 12:45			
Session 3	13:00 – 14:00	Solar & biodiversity	Wind farm tour	Workshop activity

Fig 3. Schools Open Day education programme.

TRUSTEES' ANNUAL REPORT

Activities

Workshop

An introduction to renewable energy followed by roleplaying where pupils were put into teams (e.g. marketing, manufacturers, land owners, community leaders, shareholders) and task with planning a community windfarm/solar park. This was conducted in such a way that there could be no single winning team with pupils learning the need to collaborate to build their project.

Wind farm tour

A discovery walk under and inside the wind turbines with pupils learning about how turbines are designed to harness wind energy and the process of energy transformation. Pupils were able to work with the tools we use for measuring wind speed, direct and noise levels. Back at school follow-up activity worksheets on energy transformation are provided alongside a group activity to design a turbine to lift a weight.

Solar and biodiversity tour

A discovery walk within the solar park where pupils are able to spot, collect (where appropriate) and identify flora and fauna using provided workbooks and equipment. Pupils met the shepherdess who spoke to them about her flock and the benefits of grazing in the solar park. Back at school follow-up activity worksheet focusing on how we increase biodiversity at school, in our gardens and public spaces are completed.

Collaborations and Events

We attended a Westminster Forum exploring the “Next steps for green and climate change education in England” taking part in questions and discussions whilst sharing links to our materials.

The Festival of Tomorrow provided an opportunity to showcase our visits and guided tours as well as our educational resources whilst offering related activities at the stand over the 2 days. The stand displayed our education packs, our new interpretation boards as well as a working turbine model and our virtual tour loop.

Alongside answering questions about wind and solar and using the turbine model to demonstrate, the stand ran a renewable energy/sustainability themed badge designing/making activity and a decorate and make a pinwheel activity for younger children. Both children and adults engaged with our exhibit, and with teachers, scout group leaders, a library talks organiser as well as families keen to visit the site and sharing interest in future collaborations.

Great Coxwell Barn festival proved popular with good foot fall despite very windy weather. We had our 3x3 gazebos, tables, information boards, demonstration pieces and an activity or two. We were able to talk to a variety of visitors and provided our information out to many parents, group leaders and several teachers regarding possible site visits, visits to schools and virtual visits and well as sharing information about the site (history, context, climate emergency) and renewables.

The launch of Net Zero Skills courses at Abingdon & Witney College (At Abingdon campus) was an excellent networking event. We plan to have an ongoing relationship with the college where they bring each cohort to visit us, and WeSET go into the college with the potential for visits from industry expert trustees as well.

TRUSTEES' ANNUAL REPORT

Late in the season we had a request for an onsite visit from St Mary's Primary School in Northamptonshire who were focussing on renewables that term. We sent through materials (pre and post visit activities and lesson links) prior to their visit. This was booked through Farmer Gow's and on the day, we met the coach party first thing to do the wind and solar tours. The weather was very wet however all parties had heeded the dress code and were ready and eager and despite the age group (year 4) very up for it! The tour went very well despite the rain, engagement was good and feedback on the day was excellent. WeSET then accompanied them when they returned to Farmer Gow's and helped with a session on energy generation. This association with Farmer Gow's is ongoing, and we are working together to attract similar collaborative visits in 2024.

Visits

2023 proved to be a very popular year for visits to Westmill with the highest number of visitors through the gates for seven years, 711 individuals, bringing the total number of visitors to 16,056.

Many of these visitors represented educational establishments like Cranfield University, ESCP Business School, EIB International Bilingual School Paris, Kingston University, Lancaster University and Imperial College.

One such interesting visit came from CESET, a multi-country research project, funded by GCRF-UKRI, with researchers from engineering and the social sciences across the UK and African universities. The project involves a comparative analysis of community energy systems and sustainable energy transitions in Ethiopia, Malawi and Mozambique, including a pilot project in one informal neighbourhood of Maputo, Mozambique, and a network of knowledge exchange on energy transitions. The University of Sheffield hosted its African partners in the UK and visited Westmill to engage as part of this knowledge exchange trip. The group was fascinated by the idea of collective ownership. They also thought that physically visiting the wind farms was very engaging as they could see them working up close.

Westmill also hosted several Government-oriented visits. One came from the Conservative Environment Network: a group of Conservative MPs and local councillors who wished to learn more about community energy. Another came from the Planning Inspectorate: a group of Planning Inspectors whose work includes the assessment of appeals for major infrastructure projects, notably solar farms, and other renewable energy schemes. The group believed it would be helpful to see a well-established renewable energy site to discover the community engagement aspects. A third came from the Department for Energy Security and Net Zero (DESNZ) which wished to visit a solar park to understand more about the site as its schemes use this technology on domestic homes.

Open tours for the public continued to attract many visitors throughout the year with eight tours in total taking place. The first of these occurred in April with nearly 40 people visiting over the weekend of the 15th-16th. One visitor said: "(Your guiding team) ...was very pleasant, willing to engage, I'm grateful that such people volunteer their time to make such tours possible." Another said: "The guides were really knowledgeable. The site is wonderful." A third said: "Keep doing this great work, thank you!"

73% of visitors polled in a feedback questionnaire said the content of the tours were "Excellent", with 9 out of 10 visitors saying they would likely recommend the Westmill tour to others."

TRUSTEES' ANNUAL REPORT

2. People matter

The Trustees would like to thank all those who volunteered time and effort to make WeSET so successful. It has been a difficult year and we really appreciate your support and patience.

3. We want to give

We are happy to share our documents as examples of what is needed to become a CIO – every energy scheme should have one!

4. You

If what you have read interests you in anyway, please get in touch and get involved. We welcome views on how we can best to promote the sustainable use of energy. please contact: Mike Blanch at michaelblanch@btinternet.com

5. Structure, governance and management

The Westmill Sustainable Trust is a registered charitable incorporated organisation (CIO), charity number 1158820 constituted by a constitution dated 18 June 2014. Previously it had been a registered Charity, charity number 1132379, constituted by trust deed dated 27 January 2009. The CIO charitable structure was not available when WeSET was originally formed, and the 1132379 charity was formerly closed in January 2019.

As far as possible 65% of Trustees should be members of either Westmill Wind Farm or Westmill Solar Farm, and 65% of Trustees should reside within 25 miles of Westmill Wind Farm (SN6 8TH).

TRUSTEES' ANNUAL REPORT

6. Recruitment and appointment of new trustees.

Applications to be a trustee are welcome at any time. Appointment of new trustees is subject to meeting the eligibility for trusteeship in the constitution and agreement, and a majority vote in favour by the charity trustees who must have regard to the skills, knowledge and experience needed for the effective administration of the charity.

7. MOU with Westmill Solar Co-operative Limited and Westmill Wind Farm Co-operative limited

WeSET agreed a memorandum of understanding (MOU) with Westmill Solar Co-operative Limited and Westmill Wind Farm Cooperative Limited formalising where we share an overall vision and a commitment to promote renewable energy and sustainable lifestyles and defining a set of shared objectives. It included:

- A three-year rolling commitment of donations from the Coops and the related business planning process to determine the donations.
- Establishing a Liaison Group, and
- Reporting

8. Financial Review

Income fell in 2023 only as a result of the timing of instalments paid through the MOU with our Coop partners. As with 2022, income came from the provision of commissioned educational material. FIT payments continued to produce well from the PV installations.

Expenditure rose in 2023 as WeSET and the Coops held their first in person AGM and open day for several years. WeSET incurred all the costs initially with the Coops agreeing a portion of the costs which was received post year end. Unfortunately late notice weather warnings required us to cancel part of the 3 day event.

Education costs increased with additional projects requiring investment. Visits associated costs remained steady.

We remain in a strong financial position with limited restrictions on funds.

8.1 Policy on reserves

It is the policy of the charity to seek to maintain reserves of £10,000 to maintain contracts with contractors delivering work especially in the beginning months of the financial year before expected income is received.

8.2 Risk management

The fixed operating costs of the charity are primarily fees to consultants. The Trustees consider that this prudent closing cash balance policy minimises the risks to which the charity is exposed.

Approved by the Board of Trustees on 07/08/2024 and signed on its behalf by

Mike Blanch, Chairman

Independent examiners report to the Trustees of The Westmill Sustainable Energy Trust

I report to the charity Trustees on my examination of the accounts of the company for the year ended 31 December 2023, which are set out on pages 11 to 18.

This report is made solely to the charitable company's Trustees. My independent examiner's work has been undertaken so that I might state to the charity's Trustees those matters I am required to state to them in an Independent examiner's report and for no other purpose. To the fullest extent permitted by law, I do not accept or assume responsibility to anyone other than the charity, the charity's members as a body and the charity's Trustees as a body, for my independent examiner's work, for this report or for the opinions I have formed.

Responsibilities and basis of report

As the charity's Trustees you are responsible for the preparation of the accounts.

Having satisfied myself that the accounts of the Charity are not required to be audited under Part 16 of the 2006 Act and are eligible for independent examination, I report in respect of my examination of the Charity's accounts carried out under section 145 of the Charities Act 2011 ('the 2011 Act'). In carrying out my examination I have followed the Directions given by the Charity Commission under section 145(5)(b) of the 2011 Act.

Independent examiner's statement

I have completed my examination. I can confirm that no matters have come to my attention in connection with the examination giving me cause to believe:

1. accounting records were not kept in respect of the company as required by section 386 of the 2006 Act; or
2. the accounts do not accord with those records; or
3. the accounts do not comply with the account requirements of section 396 of the 2006 Act other than any requirement that the accounts give a 'true and fair' view which is not a matter considered as part of an independent examination; or
4. the accounts have not been prepared in accordance with the methods and principles of the Statement of Recommended Practice for accounting and reporting by charities [applicable to charities preparing their accounts in accordance with the Financial Reporting Standard applicable in the UK and Republic of Ireland (FRS 102)].

I have no concerns and have come across no other matters in connection with the examination to which attention should be drawn in the report in order to enable a proper understanding of the accounts to be reached.

Signed:



For JR Mercer Associates Ltd

Dated: 2nd August 2024

RECEIPTS AND PAYMENTS ACCOUNT
FOR THE YEAR ENDED 31 DECEMBER 2023

		Unrestricted funds 2023 £	Restricted funds 2023 £	Total funds 2023 £	Total funds 2022 £
Receipts from:					
Donations	2	25,711	-	25,711	33,166
Grants	3	-	-	-	2,000
Investments	4	1,456	-	1,456	1,145
Other Trading Activities	5	1,000	-	1,000	1,000
Total receipts		28,167	-	28,167	37,311
Payments for:					
Charitable activities	6	(41,366)	(1,199)	(42,565)	(25,100)
Other	7	(4,501)	-	(4,501)	(7,263)
Total payments		(45,867)	(1,199)	(47,066)	(32,363)
Net of receipts/(payments)		(17,701)	(1,199)	(18,900)	4,947
Cash funds this year		26,546	450	26,996	45,896

The notes on pages 13 to 18 form part of these financial statements.

BALANCE SHEET

FOR THE YEAR ENDED 31 DECEMBER 2023

Charity number: 1158820

	Notes	2023 £	2022 £
Fixed assets			
Fixed assets	8	15,447	16,332
Investments	9	9,137	9,137
Current assets			
Cash at bank and in hand		26,996	45,896
Net assets		<u>51,580</u>	<u>71,365</u>
Charity funds			
Restricted funds	10	450	990
Unrestricted funds	10	51,130	70,375
Total funds		<u>51,580</u>	<u>71,365</u>

The Trustees consider that the Charity is entitled to exemption from the requirement to have an audit under the provisions of section 477 of the Companies Act 2006 ("the Act") and members have not required the Charity to obtain an audit for the year in question in accordance with the section 476 of the Act.

The financial statements were approved and authorised for issue by the Trustees on signed on their behalf, by:

Mike Blanch, Chairman

The notes on pages 13 to 18 form part of these financial statements.

NOTES TO THE FINANCIAL STATEMENTS

FOR THE YEAR ENDED 31 DECEMBER 2023

1. Accounting policies

The Westmill Sustainable Energy Trust is a charitable incorporated organisation (registered charity number 1158820). Its registered office and principle place of business is 8 Maple Gardens, Milton, Abingdon, EX14 4GP.

1.1 Basis of preparation of financial statements

The financial statements have been prepared in accordance with Accounting and Reporting by Charities: Statement of Recommended Practice applicable to charities preparing their accounts in accordance with the Financial Reporting Standard applicable in the UK and Republic of Ireland (FRS 102) (effective 1 January 2015) - Charities SORP (FRS 102)), the Financial Reporting Standard applicable in the UK and Republic of Ireland (FRS 102), the Charities Act 2011. The financial statements have been prepared under payments and receipts basis.

The Westmill Sustainable Energy Trust meets the definition of a public benefit entity under FRS 102.

1.2 Going concern

These financial statements have been prepared on a going concern basis, which the Trustees consider to be appropriate as a result of projections prepared, which together with the level of working capital and realisable investments available indicate the charity will be able to operate within the facilities currently available. There are no material uncertainties about the Charity's ability to continue. The financial statements do not include any adjustments that would result from the going concern basis becoming non-applicable.

1.3 Payments and receipts basis

Payments and receipts are recognised within the accounts on the date of transaction.

1.4 Investments

Investments of shares within Westmill Wind Farm are stated at historic cost.

1.5 Taxation

As a registered charity The Westmill Sustainable Energy Trust is entitled to taxation exemptions on all of its income and gains, properly applied for its charitable purposes.

1.6 Depreciation of Fixed Assets

Depreciation is provided in order to write off the cost of tangible fixed assets owned over their anticipated useful economic life (UEL) as follows:

Solar PV Panels - 25 years straight line

1.6 Fund accounting

Unrestricted funds are available for use at the discretion of the Trustees in the furtherance of the general objectives of the Charity.

Restricted funds are funds which are to be used in accordance with specific instructions imposed by donors or which have been raised by the Charity for a particular purpose. The aim and use of each restricted fund is set out in the notes of the financial statements.

Investment income and gains are allocated to the appropriate fund.

NOTES TO THE FINANCIAL STATEMENTS
FOR THE YEAR ENDED 31 DECEMBER 2023 (continued)

2. Income from donations

	Unrestricted funds 2023 £	Restricted funds 2023 £	Total funds 2023 £	Total funds 2022 £
Donations	25,711	-	25,711	33,166
	<hr/>	<hr/>	<hr/>	<hr/>
	25,711	-	25,711	33,166

3. Grants

	Unrestricted funds 2023 £	Restricted funds 2023 £	Total funds 2023 £	Total funds 2022 £
Art and Energy	-	-	-	500
Low Carbon Hub	-	-	-	1,500
	<hr/>	<hr/>	<hr/>	<hr/>
	-	-	-	2,000

4. Investment income

	Unrestricted funds 2023 £	Restricted funds 2023 £	Total funds 2023 £	Total funds 2022 £
Feed In Tariff	1,456	-	1,456	940
Dividend	-	-	-	205
	<hr/>	<hr/>	<hr/>	<hr/>
	1,456	-	1,456	1,145

5. Other Trading Activities

	Unrestricted funds 2023 £	Restricted funds 2023 £	Total funds 2023 £	Total funds 2022 £
Educational Projects	1,000	-	1,000	1,000
	<hr/>	<hr/>	<hr/>	<hr/>
	1,000	-	1,000	1,000

NOTES TO THE FINANCIAL STATEMENTS
FOR THE YEAR ENDED 31 DECEMBER 2023 (continued)

6. Charitable activities

	Unrestricted funds 2023 £	Restricted funds 2023 £	Total funds 2023 £	Total funds 2022 £
Education	(16,219)	(1,199)	(17,418)	(15,840)
Visits	(9,111)	-	(9,111)	(8,829)
Events	(16,036)	-	(16,036)	(182)
Grants and donations	-	-	-	(250)
	<u>(41,366)</u>	<u>(1,199)</u>	<u>(42,565)</u>	<u>(25,100)</u>

7. Other costs

	2023 £	2022 £
Independent Examiner's fees	(780)	(720)
Premises costs	(1,332)	(936)
Administration costs	(2,329)	(4,578)
Sundry costs	(60)	(144)
	<u>(4,501)</u>	<u>(6,378)</u>
Depreciation	<u>(885)</u>	<u>(885)</u>
	<u>(5,386)</u>	<u>(7,263)</u>

8. Staff costs

During 2023, WeSET had no employees (2022: 0). The progression of WeSET's objectives was achieved by its Trustees, contractors and volunteers.

NOTES TO THE FINANCIAL STATEMENTS
FOR THE YEAR ENDED 31 DECEMBER 2023 (continued)

9. Fixed assets

	Solar Panels
Cost	
As at 1 January 2023	<u>22,142</u>
As at 31 December 2023	<u>22,142</u>
Depreciation	
As at 1 January 2023	5,810
Charge for the period	<u>885</u>
As at 31 December 2023	<u>6,695</u>
Net book value	
As at 1 January 2023	<u>16,332</u>
As at 31 December 2023	<u>15,447</u>

10. Investments

Westmill Wind Farm Shares	9,137
---------------------------	-------

NOTES TO THE FINANCIAL STATEMENTS
FOR THE YEAR ENDED 31 DECEMBER 2023 (continued)

11. Statement of funds

Statement of funds - current year

	Balance at 1 January 2023	Income	Expenditure	Transfer	Balance at 31 December 2023
Unrestricted funds					
Unrestricted funds	70,375	28,167	(46,752)	(659)	51,130
Restricted funds					
People's Power Station live website enhancement	450	-	-	-	450
Carbon Hub	540	-	(1,199)	659	-
	990	-	(1,199)	659	450
	71,365	28,167	(47,951)	-	51,580

Restricted funds

Website enhancement was to install a live dashboard on their website showing real time energy production.

The second Low Carbon Hub grant is for production of EPQ course materials and additional materials. This project was completed in 2023 with an overspend against the restricted funds therefore transferred to unrestricted.

NOTES TO THE FINANCIAL STATEMENTS
FOR THE YEAR ENDED 31 DECEMBER 2023 (continued)

Statement of funds - prior year

	Balance at 1 January 2022	Income	Expenditure	Transfers	Balance at 31 December 2022
Unrestricted funds					
Unrestricted funds	69,476	35,311	(28,443)	(5,969)	70,375
Restricted funds					
School Energy Resource Packs	2,573	-	(2,920)	347	-
People's Power Station live website enhancement	450	-	-	-	450
Warm room at Westmill site	(3,758)	-	-	3,758	-
Low Carbon Hub (Educational material)	(180)	-	-	180	-
Art and Energy (MTAF)	(2,143)	500	(40)	1,683	-
Low Carbon Hub (EPQ)	-	1,500	(960)	-	540
	(3,059)	2,000	(3,920)	5,969	990
	66,417	37,311	(32,363)	-	71,365

12. Analysis of net assets between funds

	Unrestricted funds 2023 £	Restricted funds 2023 £	Total funds 2023 £
Fixed assets	15,447	-	15,447
Investments	9,137	-	9,137
Current assets	26,546	450	26,996
	51,130	450	51,580

THE WESTMILL SUSTAINABLE TRUST

England & Wales - Charity number 1158820

Accounts

Charity number: 1158820

The Westmill Sustainable Energy Trust
(WeSET)
A Charitable Incorporated Organisation



TRUSTEES' REPORT AND FINANCIAL STATEMENTS
FOR THE YEAR ENDED 31 DECEMBER 2022

CONTENTS

CONTENTS	2
REFERENCE AND ADMINISTRATIVE DETAILS OF THE CHARITY, ITS TRUSTEES AND ADVISERS	3
TRUSTEES' ANNUAL REPORT	4
INDEPENDENT EXAMINERS REPORT TO THE TRUSTEES OF THE WESTMILL SUSTAINABLE ENERGY TRUST	9
RECEIPTS AND PAYMENTS ACCOUNT	10
BALANCE SHEET	11
NOTES TO THE FINANCIAL STATEMENTS	12

REFERENCE AND ADMINISTRATIVE DETAILS OF THE CHARITY, ITS
TRUSTEES AND ADVISERS
FOR THE YEAR ENDED 31 DECEMBER 2022

Trustees

Alicia de Haldevang (appointed 05/10/22)

Cecilia Park Olley

Chris Church

Fran Tattersall

Liam Wilson

Mike Blanch, Chair

Paul Beattie (retired 05/09/2023)

Robert Tapsfield

Sarah James (retired 26/04/2022)

Warren Hicks

Charity registered number

1158820

Registered office

8 Maple Gardens, Milton, Abingdon, OX14 4GP

Website

<https://www.weset.org/>

Independent Examiner

J.R. Mercer Associates Ltd

48 Chelworth Road. Cricklade. Wilts. SN6 6HD

Banker

The Co-operative Bank

TRUSTEES' ANNUAL REPORT

FOR THE YEAR ENDED 31 DECEMBER 2022

Introduction

The Trustees present their report and financial statements for the year ended 31 December 2022 under the Charities Act 2011, together with the unaudited financial statements for the year, and confirm that the latter comply with the requirements of the Charities SORP (FRS 102) and the Charity's Memorandum and Articles of Association.

Westmill Energy Sustainable Energy Trust is a registered charity in England and Wales (number 1158820).

1. Objectives and activities

Objectives

The objectives of The Westmill Sustainable Trust are to promote the advancement of environmental protection or improvement for the benefit of the public, in particular but not exclusively, within 25 miles of Westmill Wind and Solar Farms (SN6 8TH) by promoting the deployment of sustainable energy, promoting education in the deployment of sustainable energy and making grants to such persons or organisations as the trustees see fit in order to promote and encourage the deployment of sustainable energy.

Education

Site

As part of our ongoing maintenance and improvement of site visits 6 new interpretation boards were designed and installed on lecterns. These focussed on Wind Power, Solar Power, Community Energy, Biodiversity and 2x "Welcome to Westmill" boards all with dedicated, trackable QR codes for all the relevant links to the self guided tours. The self guided tours also benefited from the development of tour fact sheets.

Resources

We continue to produce high quality educational materials. Meetings were held with the teachers running the EPQ courses and IB extended essays to determine the best approach. This project, funded by Low Carbon Hub with a grant of £1500, made good progress in 2022 with the resources completed in 2023.

Case studies were also designed, around the subject of wind and solar, with associated materials specifically for us by teachers and students at KS4 in line with GCSE specifications.

Schools and clubs

Schools

In March our Education Officer devised a 'Dragon's Den' style activity for South Marston C of E Primary school after meeting with Head of year 5/6. A presentation of 'The story of Westmill, Renewables and Community Energy' was given ahead of the launch of the challenge fielding a short Q&A about the Dragon's Den challenge. To meet the requirements of the school and pitch it appropriately we used one of our online lessons to create a scaled-down visual resource that supported the presentation. This worked well, and the questions and discussion were excellent and very encouraging. The year Head felt that the challenge took on a life of its own and fortunately the DBAT (The Diocese of Bristol Academies Trust) seem to agree. They have 17 academies, several of

TRUSTEES' ANNUAL REPORT

which are in our area and may be interested in talks and or tours and all of them could potentially use our resources to run the challenge. In a second visit to South Marston C of E Primary school in April we were part of a team of 'Dragons' judging the challenge/activity. We were very impressed with several team pitches and as other Dragons included the Head and a member of the school's trust's Buildings and Logistics Team, it was felt that more than one of their ideas could be rolled out in school. They are also keen to use our materials in their other schools.

In May Woodstock Primary School visited the site. Resources were sent prior to the visit and pupils used worksheets during the tour whilst teachers were given the facts and answers sheets for back at school. Pupils and teachers seemed to really enjoy themselves and feedback on the day from teachers indicated we had engaged all pupils, even some who had been reluctant to come on the trip.

In late June we took part in a STEM fair at Bilton Grange Prep school running 5 x 45- minute renewable energy workshops with groups of KS2 children of all ages.

After the success of last year's visit, on the 15th of November our Education's Officer spent the day at Swindon New College, setting up an exhibit in the foyer and speaking informally with passing members of staff and students as well as giving a more formal presentation to year 12 and 13 Environmental Sciences classes. We were also able to have a meeting with the teacher in charge of EPQ and to discuss the opportunities for students to work with WeSET and visit the site.

We also took part in a virtual school tour and resulting meetings discussing how these may be made more child friendly.

Clubs

On Tuesday 15th March a talk and activity evening was held with 1st Challow Beavers/Cubs. Resources specifically for this event were designed however they are in a re-usable, easily resourced format for future similar events.

The 1st Swindon cub scouts were hosted on-site on 14th June. This was a successful visit and feedback on the night was excellent with us aiming to continue to promote these visits.

On 21st September the 1st Faringdon Beaver Scouts were welcomed on-site. The tour went well and proved a useful opportunity for networking and sharing our details and event with their leader who passed this on to other local groups.

Collaborations and Events

We attended the Festival of Tomorrow in Swindon 25th – 26th February. We had a good stand in one of the main halls for the Friday and Saturday of the festival, footfall over the two days was thought to be around 1300 visitors a day giving WeSET excellent exposure. We were constantly busy with interest from small children to older adults and plenty of good conversation and questions. The demonstration wind vehicles were a real draw and out over 60 (sustainably) printed activity sheets were handed out.

Whilst attending the High Sheriff of Oxfordshire's Climate Action Award Ceremony on 21st February we were awarded a Climate Action Award for our education pack.

TRUSTEES' ANNUAL REPORT

In May we took part in the 3-day Earth Summit at Coleshill. Our volunteer guides' support was invaluable in running engaging activities. Later that month Coleshill National Trust family Eco Summit we spoke to well over 100 people of all ages and used demo turbines and a range of resources to explore wind and solar and encourage people to visit the site.

During Oxfordshire Great Big Green Week (OGBGW) we advertised and ran three online events to increase our reach. These were well subscribed with children joining from as far away as California. The online events were Winds of Change - A look at Renewable Energy for Key Stage 2 children, Westmill Renewables for your Cubs Environmental Conservation Activity Badge, and Be a Westmill Energy Saving Hero - live online event for Key Stage 2.

55th Oxford Cub Scouts made contact with us having not been able to attend the OGBGW session, so we tailored and ran an online session for them on the evening of Monday 3rd October.

As part of OGBGW, we attended the screening of 'We the Power' at UPP Oxford on 29th September where the panel discussion was chaired by our Trustee Chris Church and panelled by our Education Officer Emma Arnold.

We took a stand to Faringdon Big Green Day on Saturday 1st October which was well attended, and we were able to speak to a wide range of local people and did some badge making with children.

On the 15th of October we helped to run one of the workshops at the Westmill Futures Event. This was an excellent chance to meet some of the shareholders and tell them about what we are doing as well as hearing their ideas and networking with those we were running the workshop with as well as some of the speakers. As a result on 30th November we held further discussions with Younty to talk about the potential for sharing each other's resources to reach a wider audience and how we might find and communicate with people doing similar things in terms of producing educational resources, and to create a network through which we can discuss sign-posting each others' work and getting together to discuss best practices.

Visits

The first activity on-site saw a collective of local councillors from two parish councils pay a visit to Westmill in January. The visit was an exploratory field trip to gain an understanding of how new solar farms can be developed.

In February, we welcomed the University of Oxford's Environmental Change Institute and students from Cranfield University.

A group from UTC (University Technical College) Oxfordshire visited in March. The leader of their group said: "Thank you so much for organising our trip to Westmill. Your volunteers were very knowledgeable and enthusiastic. They did a fantastic job. Thank you to all of them for their time and effort with my students!"

As April arrived, EIB School, a group of bilingual schools in Paris, visited Westmill. Their group leader said: "Thank you once again for your time, your kindness and the passing on of knowledge to our students. It was a perfect activity. We studied green energies in class last month and they could then witness the reality of it. They learned so much more on the ground than in class! We would love to come again next year."

TRUSTEES' ANNUAL REPORT

Demand for tours continued throughout the rest of the year. Westmill welcomed visitors from educational and social establishments like Oaktree Primary School, Woodstock C of E Primary School, Brightwalton Primary School Newbury, 1st Swindon Sea Scouts & Nelson Cubs and 1st Faringdon Beaver Scouts. Plus, Westmill opened its doors to business-oriented groups such as RWE Global's Acoustics and Wind Measurement Team, and Wiltshire Council's Corsham Area Board Climate Group.

Westmill's regular monthly public tours ran through the summer. Ten tours in all were held. 83.8% of visitors said it would be extremely likely that they would recommend the tour. An additional 13.5% said "likely". 97.3% in total would recommend. Feedback on these tours has included comments like "It was a fascinating hour and a half, which I had not expected to enjoy quite so much." and "(the best part of the tour was)... discovering how the project was conceived and carried out." and "being able to see the wind generators and solar panels working. I was pleased to hear how quiet the wind generators are."

An offering of virtual tours also continued in tandem - for large groups such as schools, associations and clubs. Sixty children from Gorse Hill School in Swindon were learning about renewable and non-renewable energy. and chose a Westmill Virtual Tour as part of their education. These tours continue to offer a creative way of sharing the important work of Westmill with local schools and further afield.

Over 540 people visited Westmill during 2022.

2. People matter

The Trustees would like to thank all those who volunteered time and effort to make WeSET so successful. It has been a difficult year, and we really appreciate your support and patience.

3. We want to give

We are happy to share our documents as examples of what is needed to become a CIO – every energy scheme should have one!

4. You

If what you have read interests you in anyway, please get in touch and get involved. We welcome views on how we can best to promote the sustainable use of energy. please contact: Mike Blanch at michaelblanch@btinternet.com

5. Structure, governance and management

The Westmill Sustainable Trust is a registered charitable incorporated organisation (CIO), charity number 1158820 constituted by a constitution dated 18 June 2014. Previously it had been a registered Charity, charity number 1132379, constituted by trust deed dated 27 January 2009 and formerly closed in January 2019. The CIO charitable structure was not available when WeSET was originally formed.

As far as possible 65% of Trustees should be members of either Westmill Wind Farm or Westmill Solar Farm, and 65% of Trustees should reside within 25 miles of Westmill Wind Farm (SN6 8TH).

TRUSTEES' ANNUAL REPORT

6. Recruitment and appointment of new trustees.

Applications to be a trustee are welcome at any time. Appointment of new trustees is subject to meeting the eligibility for trusteeship in the constitution and agreement, and a majority vote in favour by the charity trustees who must have regard to the skills, knowledge and experience needed for the effective administration of the charity.

7. MOU with Westmill Solar Co-operative Limited and Westmill Wind Farm Co-operative limited

WeSET agreed a memorandum of understanding (MOU) with Westmill Solar Co-operative Limited and Westmill Wind Farm Cooperative Limited formalising where we share an overall vision and a commitment to promote renewable energy and sustainable lifestyles and defining a set of shared objectives. It included:

- A three-year rolling commitment of donations from the Coops and the related business planning process to determine the donations.
- Establishing a Liaison Group, and
- Reporting

8. Financial Review

Income fell in 2022 as a result of the 2021 receiving the Q4 2020 instalment promised in the continued generous support of our Coop partners MOU.

Expenditure fell in 2022 as the Westmill Centre assessment development came to an end in 2021.

Education costs remained steady whilst costs associated with site visits rising, as with 2021, as a result of our renewed focus on making the site available for the public facilitated by additional resources committed to this area.

We have continued to not have any large events.

We remain in a strong financial position with limited restrictions on funds.

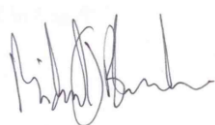
8.1 Policy on reserves

It is the policy of the charity to seek to maintain reserves of £10,000 to maintain contracts with contractors delivering work especially in the beginning months of the financial year before expected income is received.

8.2 Risk management

The fixed operating costs of the charity are primarily fees to consultants. The Trustees consider that this prudent closing cash balance policy minimises the risks to which the charity is exposed.

Approved by the Board of Trustees on 9 October 2023 and signed on its behalf by:



Mike Blanch, Chairman

Independent examiners report to the Trustees of The Westmill Sustainable Energy Trust

I report to the charity Trustees on my examination of the accounts of the company for the year ended 31 December 2022, which are set out on pages 10 to 17.

This report is made solely to the charitable company's Trustees. My independent examiner's work has been undertaken so that I might state to the charity's Trustees those matters I am required to state to them in an Independent examiner's report and for no other purpose. To the fullest extent permitted by law, I do not accept or assume responsibility to anyone other than the charity, the charity's members as a body and the charity's Trustees as a body, for my independent examiner's work, for this report or for the opinions I have formed.

Responsibilities and basis of report

As the charity's Trustees you are responsible for the preparation of the accounts.

Having satisfied myself that the accounts of the Charity are not required to be audited under Part 16 of the 2006 Act and are eligible for independent examination, I report in respect of my examination of the Charity's accounts carried out under section 145 of the Charities Act 2011 ('the 2011 Act'). In carrying out my examination I have followed the Directions given by the Charity Commission under section 145(5)(b) of the 2011 Act.

Independent examiner's statement

I have completed my examination. I can confirm that no matters have come to my attention in connection with the examination giving me cause to believe:

1. accounting records were not kept in respect of the company as required by section 386 of the 2006 Act; or
2. the accounts do not accord with those records; or
3. the accounts do not comply with the account requirements of section 396 of the 2006 Act other than any requirement that the accounts give a 'true and fair' view which is not a matter considered as part of an independent examination; or
4. the accounts have not been prepared in accordance with the methods and principles of the Statement of Recommended Practice for accounting and reporting by charities [applicable to charities preparing their accounts in accordance with the Financial Reporting Standard applicable in the UK and Republic of Ireland (FRS 102)].

I have no concerns and have come across no other matters in connection with the examination to which attention should be drawn in the report in order to enable a proper understanding of the accounts to be reached.

Signed:



Dated: 18th September 2023

RECEIPTS AND PAYMENTS ACCOUNT
FOR THE YEAR ENDED 31 DECEMBER 2022

		Unrestricted funds 2022 £	Restricted funds 2022 £	Total funds 2022 £	Total funds 2021 £
Receipts from:					
Donations	2	33,166	-	33,166	55,246
Grants	3	-	2,000	2,000	500
Investments	4	1,145	-	1,145	412
Other Trading Activities	5	1,000	-	1,000	-
Total receipts		35,311	2,000	37,311	56,158
Payments for:					
Charitable activities	6	(21,180)	(3,920)	(25,100)	(27,836)
Other	7	(7,263)	-	(7,263)	(26,934)
Total payments		(28,443)	(3,920)	(32,363)	(54,770)
Net of receipts/(payments)		6,867	(1,920)	4,947	1,388
Cash funds this year		44,844	990	45,834	40,063

The notes on pages 12 to 17 form part of these financial statements.

BALANCE SHEET

FOR THE YEAR ENDED 31 DECEMBER 2022

Charity number: 1158820

		2022	2021
	Notes	£	£ (restated)
Fixed assets			
Fixed assets	9	16,332	17,217
Investments	10	9,137	9,137
Current assets			
Cash at bank and in hand		45,896	40,063
Net assets		<u>71,365</u>	<u>66,417</u>
Charity funds			
Restricted funds	11	990	(3,059)
Unrestricted funds	11	70,375	69,476
Total funds		<u>71,365</u>	<u>66,417</u>

The Trustees consider that the Charity is entitled to exemption from the requirement to have an audit under the provisions of section 477 of the Companies Act 2006 ("the Act") and members have not required the Charity to obtain an audit for the year in question in accordance with the section 476 of the Act.

The financial statements were approved and authorised for issue by the Trustees on signed on their behalf, by:

Mike Blanch, Chairman

The notes on pages 12 to 17 form part of these financial statements.

NOTES TO THE FINANCIAL STATEMENTS

FOR THE YEAR ENDED 31 DECEMBER 2022

1. Accounting policies

The Westmill Sustainable Energy Trust is a charitable incorporated organisation (registered charity number 1158820). Its registered office and principle place of business is 8 Maple Gardens, Milton, Abingdon, EX14 4GP.

1.1 Basis of preparation of financial statements

The financial statements have been prepared in accordance with Accounting and Reporting by Charities: Statement of Recommended Practice applicable to charities preparing their accounts in accordance with the Financial Reporting Standard applicable in the UK and Republic of Ireland (FRS 102) (effective 1 January 2015) - Charities SORP (FRS 102)), the Financial Reporting Standard applicable in the UK and Republic of Ireland (FRS 102), the Charities Act 2011. The financial statements have been prepared under payments and receipts basis.

The Westmill Sustainable Energy Trust meets the definition of a public benefit entity under FRS 102.

1.2 Going concern

These financial statements have been prepared on a going concern basis, which the Trustees consider to be appropriate as a result of projections prepared, which together with the level of working capital and realisable investments available indicate the charity will be able to operate within the facilities currently available. There are no material uncertainties about the Charity's ability to continue. The financial statements do not include any adjustments that would result from the going concern basis becoming non-applicable.

1.3 Payments and receipts basis

Payments and receipts are recognised within the accounts on the date of transaction.

1.4 Investments

Investments of shares within Westmill Wind Farm are stated at historic cost.

1.5 Taxation

As a registered charity The Westmill Sustainable Energy Trust is entitled to taxation exemptions on all of its income and gains, properly applied for its charitable purposes.

1.6 Depreciation of Fixed Assets

Depreciation is provided in order to write off the cost of tangible fixed assets owned over their anticipated useful economic life (UEL) as follows:

Solar PV Panels - 25 years straight line

1.6 Fund accounting

Unrestricted funds are available for use at the discretion of the Trustees in the furtherance of the general objectives of the Charity.

Restricted funds are funds which are to be used in accordance with specific instructions imposed by donors or which have been raised by the Charity for a particular purpose. The aim and use of each restricted fund is set out in the notes of the financial statements.

Investment income and gains are allocated to the appropriate fund.

NOTES TO THE FINANCIAL STATEMENTS
FOR THE YEAR ENDED 31 DECEMBER 2022 (continued)

2. Income from donations

	Unrestricted funds 2022 £	Restricted funds 2022 £	Total funds 2022 £	Total funds 2021 £
Donations	33,166	-	33,166	55,246
	<hr/>	<hr/>	<hr/>	<hr/>
	33,166	-	33,166	55,246

3. Grants

	Unrestricted funds 2022 £	Restricted funds 2022 £	Total funds 2022 £	Total funds 2021 £
Art and Energy	-	500	500	500
Low Carbon Hub	-	1,500	1,500	-
	<hr/>	<hr/>	<hr/>	<hr/>
	-	2,000	2,000	500

4. Investment income

	Unrestricted funds 2022 £	Restricted funds 2022 £	Total funds 2022 £	Total funds 2021 £
Feed In Tarriff	940	-	940	-
Dividend	205	-	205	412
	<hr/>	<hr/>	<hr/>	<hr/>
	1,145	-	1,145	412

5. Other Trading Activities

	Unrestricted funds 2022 £	Restricted funds 2022 £	Total funds 2022 £	Total funds 2021 £
Educational Projects	1,000	-	1,000	-
	<hr/>	<hr/>	<hr/>	<hr/>
	1,000	-	1,000	-

NOTES TO THE FINANCIAL STATEMENTS
FOR THE YEAR ENDED 31 DECEMBER 2022 (continued)

6. Charitable activities

	Unrestricted funds 2022 £	Restricted funds 2022 £	Total funds 2022 £	Total funds 2021 £ (restated)
Education	(11,920)	(3,920)	(15,840)	(14,359)
Visits	(8,829)	-	(8,829)	(7,455)
Events	(182)	-	(182)	-
Westmill Centre	-	-	-	(6,023)
Grants	(250)	-	(250)	-
	<u>(21,180)</u>	<u>(3,920)</u>	<u>(25,100)</u>	<u>(27,836)</u>

7. Other costs

	2022 £	2021 £
Independent Examiner's fees	(720)	(1,500)
Premises costs	(936)	(23,441)
Administration costs	(4,578)	(1,108)
Sundry costs	(144)	-
Depreciation	(885)	(885)
	<u>(7,263)</u>	<u>(26,934)</u>

8. Staff costs

During 2022, WeSET had no employees (2021: 0). The progression of WeSET's objectives was achieved by its Trustees, contractors and volunteers.

NOTES TO THE FINANCIAL STATEMENTS
FOR THE YEAR ENDED 31 DECEMBER 2022 (continued)

9. Fixed assets

	Solar Panels
Cost	
As at 1 January 2022	<u>22,142</u>
As at 31 December 2022	<u>22,142</u>
Depreciation	
As at 1 January 2022	4,925
Charge for the period	<u>885</u>
As at 31 December 2022	<u>5,810</u>
Net book value	
As at 1 January 2022	<u>17,217</u>
As at 31 December 2022	<u>16,332</u>

10. Investments

Westmill Wind Farm Shares	9,137
---------------------------	-------

NOTES TO THE FINANCIAL STATEMENTS
FOR THE YEAR ENDED 31 DECEMBER 2022 (continued)

11. Statement of funds

Statement of funds - current year

	Balance at 1 January 2022	Income	Expenditure	Transfers	Balance at 31 December 2022
Unrestricted funds					
Unrestricted funds	69,476	35,311	(28,443)	(5,969)	70,375
Restricted funds					
School Energy Resource Packs	2,573	-	(2,920)	347	-
People's Power Station live website enhancement	450	-	-	-	450
Warm room at Westmill site	(3,758)	-	-	3,758	-
Low Carbon Hub (Educational material)	(180)	-	-	180	-
Art and Energy (MTAF)	(2,143)	500	(40)	1,683	-
Low Carbon Hub (EPQ)	-	1,500	(960)	-	540
	(3,059)	2,000	(3,920)	5,969	990
	66,417	37,311	(32,363)	-	71,365

Restricted funds

The School Energy Resource Packs comprises of funds donated by Westmill Solar Coop for the development and publication of educational materials.

Website enhancement was to install a live dashboard on their website showing real time energy production.

Warm room at Westmill has developed into the "Westmill Centre", assessing the feasibility, and installation of a centre based on the Westmill farm. This project has ended in an overspend therefore transferred to unrestricted.

The first Low Carbon Hub fund was to produce educational materials which was completed with an overspend against the restricted funds therefore transferred to unrestricted.

Art and Energy grant to fund the Moths to a Flame materials which has now ended with an overspend therefore transferring to unrestricted.

The second Low Carbon Hub grant is for production of EPQ course materials and additional materials. This project was still ongoing at year end.

NOTES TO THE FINANCIAL STATEMENTS
FOR THE YEAR ENDED 31 DECEMBER 2022 (continued)

Statement of funds - prior year (restated)

	Balance at 1 January 2021	Income	Expenditure	Balance at 31 December 2021
Unrestricted funds				
Unrestricted funds	60,877	44,028	(35,429)	69,476
Restricted funds				
School Energy Resource Packs	9,939	1,630	(8,996)	2,573
People's Power Station live website enhancement	450	-	-	450
Warm room at Westmill site	(7,736)	10,000	(6,023)	(3,758)
Low Carbon Hub	1,500	-	(1,680)	(180)
Art and Energy	-	500	(2,643)	(2,143)
	<u>4,153</u>	<u>12,130</u>	<u>(19,341)</u>	<u>(3,059)</u>
	<u>65,030</u>	<u>56,158</u>	<u>(54,770)</u>	<u>66,417</u>

12. Analysis of net assets between funds

	Unrestricted funds 2022 £	Restricted funds 2022 £	Total funds 2022 £
Fixed assets	16,332	-	16,332
Investments	9,137	-	9,137
Current assets	44,906	990	45,896
	<u>70,375</u>	<u>990</u>	<u>71,365</u>

THE WESTMILL SUSTAINABLE TRUST

England & Wales - Charity number 1158820

Accounts

Charity number: 1158820

The Westmill Sustainable Energy Trust
(WeSET)
A Charitable Incorporated Organisation



TRUSTEES' REPORT AND FINANCIAL STATEMENTS
FOR THE YEAR ENDED 31 DECEMBER 2021

CONTENTS

CONTENTS	2
REFERENCE AND ADMINISTRATIVE DETAILS OF THE CHARITY, ITS TRUSTEES AND ADVISERS	3
TRUSTEES' ANNUAL REPORT	4
INDEPENDENT EXAMINERS REPORT TO THE TRUSTEES OF THE WESTMILL SUSTAINABLE ENERGY TRUST	10
RECEIPTS AND PAYMENTS ACCOUNT	11
BALANCE SHEET	12
NOTES TO THE FINANCIAL STATEMENTS	13

REFERENCE AND ADMINISTRATIVE DETAILS OF THE CHARITY, ITS
TRUSTEES AND ADVISERS
FOR THE YEAR ENDED 31 DECEMBER 2021

Trustees

Paul Beattie

Mike Blanch, Chair

Chris Church

Warren Hicks

Sarah James

Cecilia Park Olley

Robert Tapsfield

Fran Tattersall

Liam Wilson

Charity registered number

1158820

Registered office

8 Maple Gardens, Milton, Abingdon, OX14 4GP

Website

<https://www.weset.org/>

Independent Examiner

J.R. Mercer Associates Ltd

48 Chelworth Road. Cricklade. Wilts. SN6 6HD

Banker

The Co-operative Bank

TRUSTEES' ANNUAL REPORT FOR THE YEAR ENDED 31 DECEMBER 2021

Introduction

The Trustees present their report and financial statements for the year ended 31 December 2021 under the Charities Act 2011, together with the unaudited financial statements for the year, and confirm that the latter comply with the requirements of the Charities SORP (FRS 102) and the Charity's Memorandum and Articles of Association.

Westmill Energy Sustainable Energy Trust is a registered charity in England and Wales (number 1158820).

1. Objectives and activities

Objectives

The objectives of The Westmill Sustainable Trust are to promote the advancement of environmental protection or improvement for the benefit of the public, in particular but not exclusively, within 25 miles of Westmill Wind and Solar Farms (SN6 8TH) by promoting the deployment of sustainable energy, promoting education in the deployment of sustainable energy and making grants to such persons or organisations as the trustees see fit in order to promote and encourage the deployment of sustainable energy.

Education

We participated in a number of webinar discussions this year which have given us the opportunity to talk about and share links to our educational materials. These have included The Art and Energy Collective, Low Carbon Hub, The Ministry of Eco Education, Bioregional and One Planet Oxfordshire.

Throughout the year we have continued to contact schools and groups with updates and information about what we can offer in terms of visits, from remote guided tours, site visits and visits in conjunction with Farmer Gow's, to what we can offer in terms of visiting the school and presenting/running activities. We have been using Twitter to share and publicise our materials and collaborations, this has proved useful as our network has grown and we have had interest from scout groups, home schoolers and some schools through this medium.

In May, after creating presentations specifically for use in school assemblies, we recorded a narrated video version that can be used in school, online (in case of further school closures) or for hybrid teaching where a number of pupils are joining assemblies/classes online due to isolation.

Our "Learning Resources For All Ages" resource was taken offline while we worked to consolidate and update existing resources and create new ones. A new home will be created on the Website for these resources in 2022.

Thanks to a grant from Low Carbon Hub (LCH) to support our educational projects we explored existing industry materials available to support EPQs, created resource files, and drafted ideas/formats with which to approach a number of local secondary schools and colleges after Easter 2022. These will also be available online. Work also began on creating community energy case studies specifically for Westmill Wind and Westmill Solar and associated materials specifically for use by teachers/students at KS4 in line with GCSE specifications as in the LCH funding plan.

Several new activity sheets were also completed which can be shared through Twitter, via email and were uploaded throughout the year.

We continued to work on new lessons, building on those created in 2020, including finishing the EV lessons and a lesson looking specifically at The Grid was finalised.

In October Luke Sinnick, Head of Environmental Sciences at the New College and North Star College campuses in Swindon got in touch to arrange a 'manned' information stand and talks on both sites during COP26. These visits took place in November, and we spent 2 full days at New College Swindon and North Star Swindon respectively, setting up and 'manning' the display in their foyers chatting informally to students and teachers as well as giving 5 presentations to different groups of students, predominantly environmental science classes but also eco-tourism and Art and design.

In December 2021 Low Energy Oxford got in touch to arrange meetings in early 2022 with a view to commissioning educational materials looking at LEO case studies and The Energy Challenge.

Collaborations

Moths to a Flame

In early 2021, The Art and Energy Collective got in touch to see if we would like to be a collaborating partner in their 'Moths to a Flame' project (<https://www.mothstoafame.art/>). The idea of MTAF was threefold - making and decorating moths by re-using LDPE milk bottles, designing/colouring in moth templates which would be brought to life using an AR app and recording messages of hope to highlight the effects of climate change on the natural world, in this case, Moths. This was all to take place in the run-up to COP26 and during the conference by way of an installation at the Botanical gardens Glasgow.

With future Covid restrictions in mind, it was decided that, as the installation made its way to COP26 in real-time, they would have a number of virtual 'landing points' of which we would be one. To this end, we planned a one-day event with peripheral related online events and invited local families and schools to participate. Local primary schools received Moth making kits and AR moth colouring sheets with the project App link enabling them to bring their moths to life and to record/video a message of hope to be played at the installation in Glasgow. This was followed up with further information sent to each Head Teacher which included information about Westmill, visits, educational materials and activities. In the run-up to the event, we took part in a live video broadcast from Westmill. These 'Watch Moths' gave collaborators an opportunity to talk about their venue and event.

Thanks to a generous grant from The Art and Energy Collective we were able to run the event and buy and create reusable resources. The Moths to a Flame open day event in September (as part of Big Green Week (BGW)) was successful and we had some very positive feedback. We offered tours of both wind and solar alongside a variety of creative activities including cyanotype printmaking, screen printing and wildflower meadow seed bomb-making as well as moth making. We wrote an event report for The Art and Energy Collective who published it on their blog and news pages. All 65 of our moths made at the event as well as those made by local schools made their way alongside over 20,000 others by electric vehicle to COP26 where the exhibit was very well received.

We took part in a final live broadcast on Friday 26th November, and produced a video review of our participation in Moths to a Flame which was made available on their website and on social media.

During Big Green Week we also recorded answers to interview questions about our education program for BBC Radio Oxford on-site under Turbine 4.

From the Ground Up

'From the Ground Up' was an exhibition held at The Old Fire Station (TOFS), Oxford in which we designed a 'Visit Westmill' Poster inspired by the ubiquitous rail poster of the early 1900s and created a video in real-time of painting the wind turbines and solar array. Edited together with interview recordings we created a video about the story of Westmill. This was displayed at TOFS from late August for 6 weeks and then toured briefly afterwards. The exhibit is still available to view on their website <https://www.from-the-ground-up.co.uk/>

EDF/Pivot Power

Collaborating with EDF/Pivot Power we created educational materials for the Energy Superhub Oxford. After a couple of online meetings and a proposal we were asked to design and create educational materials pitched at KS4 GCSE Geography students. These took the form of a series of case studies, linked presentations and associated materials including worksheets, activity sheets and fieldwork templates. These were completed in late July in time for trials in the new academic year. They have had some good feedback and they may be interested in further collaboration.

<https://energysuperhuboxford.org/schools-and-educators/resources/>

We also provided answers for questions in a written interview for Pivot power which went onto their blog.

<https://energysuperhuboxford.org/eso-in-conversation-emma-arnold-weset/>



Farmer Gow's

For a site visit from Farmer Gow's groups, we created worksheets and signage for a fact-finding trail. We had our first collaborative visit on Monday 13th September which we ran with Farmer Gow's team joining in. We have since had feedback meetings and have adapted the materials accordingly. We will be meeting again soon with a view to preparing for further visits from March 2022.

Visits

With restrictions imposed by the Government surrounding the COVID-19 pandemic extending into the first few months of the year, tours of the Westmill Wind Farm and Solar Park at the start of 2021 remained restricted to our online virtual tours. We welcomed nearly 50 visitors in this manner

during the first six weeks of the year, with a special virtual tour presented to members of the Poole Radio Yacht Club.

In March, video production company Big Blue 8 visited Westmill to create a video https://www.dhl.com/global-en/home/industry-sectors/automotive/dhl-ev-tv-series/episode-1-our-environment.html#parsysPath_text_image for the logistics company DHL on its involvement in the electric vehicle (EV) supply chain and the positive impact that EVs make. The production company later commented: "Thanks for arranging the filming at Westmill. The whole thing was very well organised at short notice and Alan (volunteer guide) was a delight to work with and very patient with us."

A film crew arrived at Westmill in April to shoot 'Dandelion', a sci-fi short film, currently in post-production and due to go into film festivals globally and eventually online for watching. After much coordination, the shoot took place over three days. Director Gillian Simpson later commented: "Hope you are well, I just wanted to say a massive thank you for all your help with our film, the shoot went really well and it's looking great! We are so grateful to you for allowing us to film on the farm and to all the volunteers who so kindly gave up their time to help out."

By June, the Government's COVID-19 restrictions began to ease and, after a 20-month enforced hiatus, the Westmill gates opened again on Saturday 19th June for a much-anticipated public on-site tour day. Four further public on-site tour days took place from August through October. Nearly 60 people visited in Westmill in this way throughout 2021 and, given the cautious feeling by many to social activities with large gatherings, this seemed to be a healthy interest. Some of the notable comments received include "very informative and welcoming", "everybody (was) very helpful and willing to answer any questions honestly ... the experience (was) very informative ... could not fault it", and "(enjoyed) the enthusiasm and knowledge of the volunteer guides".

In addition to our public on-site tour days, our bespoke visits for large groups also resumed. Parties of people including Oxfordshire Green Party, First Faringdon Cubs, Engineering Forum of Nigerians UK and Cirencester College have enjoyed a trip to our Wind Farm & Solar Park. Over 140 people (seven separate groups in total) visited in this way. One group enjoyed "the open-air setting, knowledgeable guides and the potential for sustainable energy which was not apparent until visiting the site.

The public virtual tours continued to run throughout the year, in tandem with physical visits. Nearly 80 people joined these tours. Interest has come from far and wide: the Republic of Ireland, Germany, Luxembourg, the United States, Canada, Nigeria, Columbia and Singapore.

Additionally, some bespoke virtual tours took place for large groups such as schools, associations and clubs. The first tour of this nature occurred in October, when 73 pupils from Kingsclere Church of England Primary School enjoyed a virtual tour. In this case, the children wanted to understand how solar energy is generated and the positive impact on the environment. These sorts of tours are proving to be a productive way of sharing the positive impact of Westmill not only with local schools but with academic institutions all around the UK.

Also in October, Westmill was chosen as the location with which to make a video about the PhD research of a student from Cardiff University which investigated what happens to wind and solar farms at the end of their 25-year planning consent. The video https://www.youtube.com/watch?v=C4_YxHeaWWsuTube was a winner at the Economic And Social Research Council's Celebrating Impact Prize 2021. The findings have also been shared with the European wind energy industry.

2. People matter

The Trustees would like to thank all those who volunteered time and effort to make WeSET so successful. It has been a difficult year and we really appreciate your support and patience.

3. We want to give

We are happy to share our documents as examples of what is needed to become a CIO – every energy scheme should have one!

4. You

If what you have read interests you in anyway, please get in touch and get involved. We welcome views on how we can best to promote the sustainable use of energy. please contact: Mike Blanch at michaelblanch@btinternet.com

5. Structure, governance and management

The Westmill Sustainable Trust is a registered charitable incorporated organisation (CIO), charity number 1158820 constituted by a constitution dated 18 June 2014. Previously it had been a registered Charity, charity number 1132379, constituted by trust deed dated 27 January 2009. The CIO charitable structure was not available when WeSET was originally formed and the 1132379 charity was formerly closed in January 2019.

As far as possible 65% of Trustees should be members of either Westmill Wind Farm or Westmill Solar Farm, and 65% of Trustees should reside within 25 miles of Westmill Wind Farm (SN6 8TH).

6. Recruitment and appointment of new trustees.

Applications to be a trustee are welcome at any time. Appointment of new trustees is subject to meeting the eligibility for trusteeship in the constitution and agreement, and a majority vote in favour by the charity trustees who must have regard to the skills, knowledge and experience needed for the effective administration of the charity.

7. MOU with Westmill Solar Co-operative Limited and Westmill Wind Farm Co-operative limited

WeSET agreed a memorandum of understanding (MOU) with Westmill Solar Co-operative Limited and Westmill Wind Farm Cooperative Limited formalising where we share an overall vision and a commitment to promote renewable energy and sustainable lifestyles and defining a set of shared objectives. It included:

- A three-year rolling commitment of donations from the Coops and the related business planning process to determine the donations.
- Establishing a Liaison Group, and
- Reporting.

8. Financial Review

Income rose in 2021 as a result of the continued generous support of our Coop partners making their full contributions set out in the MOU as well as a Q4 2020 instalment. As well as the regular commitments, Westmill Solar continued to support WeSET's objectives providing restricted funds for our projects.

Expenditure rose as the bulk of bills related to the now moth balled Westmill Centre project came in.

Education costs remained steady with costs associated with site visits rising as a result of our renewed focus on making the site available for the public facilitated by additional resources committed to this area.

Large events at the site continued to be postponed due to COVID while we continued to assess to appetite for these.

With a reducing influence of COVID and focused activities we finish the year with a stronger balance sheet than the prior year ensuring we can continue to make progress on our charitable objectives.

7.1 Policy on reserves

It is the policy of the charity to seek to maintain reserves of £3,000 to maintain contracts with consultants delivering work especially in the beginning months of the financial year before expected income is received.

7.2 Risk management

The fixed operating costs of the charity are primarily fees to consultants. The Trustees consider that this prudent closing cash balance policy minimises the risks to which the charity is exposed.

Approved by the Board of Trustees on 5 October 2022 and signed on its behalf by

A handwritten signature in black ink, appearing to read 'Mike Blanch', written over a light grey rectangular background.

Mike Blanch, Chair

Independent examiners report to the Trustees of The Westmill Sustainable Energy Trust

I report to the charity Trustees on my examination of the accounts of the company for the year ended 31 December 2021, which are set out on pages 11 to 18.

This report is made solely to the charitable company's Trustees. My independent examiner's work has been undertaken so that I might state to the charity's Trustees those matters I am required to state to them in an Independent examiner's report and for no other purpose. To the fullest extent permitted by law, I do not accept or assume responsibility to anyone other than the charity, the charity's members as a body and the charity's Trustees as a body, for my independent examiner's work, for this report or for the opinions I have formed.

Responsibilities and basis of report

As the charity's Trustees you are responsible for the preparation of the accounts.

Having satisfied myself that the accounts of the Charity are not required to be audited under Part 16 of the 2006 Act and are eligible for independent examination, I report in respect of my examination of the Charity's accounts carried out under section 145 of the Charities Act 2011 ('the 2011 Act'). In carrying out my examination I have followed the Directions given by the Charity Commission under section 145(5)(b) of the 2011 Act.

Independent examiner's statement

I have completed my examination. I can confirm that no matters have come to my attention in connection with the examination giving me cause to believe:

1. accounting records were not kept in respect of the company as required by section 386 of the 2006 Act; or
2. the accounts do not accord with those records; or
3. the accounts do not comply with the account requirements of section 396 of the 2006 Act other than any requirement that the accounts give a 'true and fair' view which is not a matter considered as part of an independent examination; or
4. the accounts have not been prepared in accordance with the methods and principles of the Statement of Recommended Practice for accounting and reporting by charities [applicable to charities preparing their accounts in accordance with the Financial Reporting Standard applicable in the UK and Republic of Ireland (FRS 102)].

I have no concerns and have come across no other matters in connection with the examination to which attention should be drawn in the report in order to enable a proper understanding of the accounts to be reached.

Signed:



Dated: 14th July 2022

RECEIPTS AND PAYMENTS ACCOUNT
FOR THE YEAR ENDED 31 DECEMBER 2021

		Unrestricted funds 2021 £	Restricted funds 2021 £	Total funds 2021 £	Total funds 2020 £
Receipts from:					
Donations	2	43,616	11,630	55,246	37,748
Grants	3	-	500	500	-
Investments	4	412	-	412	609
Total receipts		44,028	12,130	56,158	38,356
Payments for:					
Charitable activities	5	(8,382)	(19,455)	(27,836)	(45,237)
Other	6	(26,934)	-	(26,934)	(3,225)
Total payments		(35,316)	(19,455)	(54,770)	(48,462)
Net of receipts/(payments)		8,712	(7,325)	1,388	86,819
Cash funds this year		42,673	(2,672)	40,001	37,791

The notes on pages 13 to 18 form part of these financial statements.

BALANCE SHEET

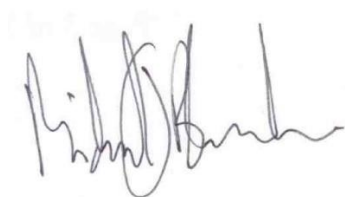
FOR THE YEAR ENDED 31 DECEMBER 2021

Charity number: 1158820

	Notes	2021 £	2020 £
Fixed assets			
Fixed assets	8	17,217	18,102
Investments	9	9,137	9,137
Current assets			
Cash at bank and in hand		40,063	37,791
Net assets		<u>66,417</u>	<u>65,030</u>
Charity funds			
Restricted funds	10	(3,172)	4,153
Unrestricted funds	10	69,589	60,877
Total funds		<u>66,417</u>	<u>65,030</u>

The Trustees consider that the Charity is entitled to exemption from the requirement to have an audit under the provisions of section 477 of the Companies Act 2006 ("the Act") and members have not required the Charity to obtain an audit for the year in question in accordance with the section 476 of the Act.

The financial statements were approved and authorised for issue by the Trustees on 5 October 2022 signed on their behalf, by:



Mike Blanch, Chairman

The notes on pages 13 to 18 form part of these financial statements.

NOTES TO THE FINANCIAL STATEMENTS

FOR THE YEAR ENDED 31 DECEMBER 2021

1. Accounting policies

The Westmill Sustainable Energy Trust is a charitable incorporated organisation (registered charity number 1158820). Its registered office and principal place of business is 8 Maple Gardens, Milton, Abingdon, EX14 4GP.

1.1 Basis of preparation of financial statements

The financial statements have been prepared in accordance with Accounting and Reporting by Charities: Statement of Recommended Practice applicable to charities preparing their accounts in accordance with the Financial Reporting Standard applicable in the UK and Republic of Ireland (FRS 102) (effective 1 January 2015) - Charities SORP (FRS 102)), the Financial Reporting Standard applicable in the UK and Republic of Ireland (FRS 102), the Charities Act 2011. The financial statements have been prepared under payments and receipts basis.

The Westmill Sustainable Energy Trust meets the definition of a public benefit entity under FRS 102.

1.2 Going concern

These financial statements have been prepared on a going concern basis, which the Trustees consider to be appropriate as a result of projections prepared, which together with the level of working capital and realisable investments available indicate the charity will be able to operate within the facilities currently available. There are no material uncertainties about the Charity's ability to continue. The financial statements do not include any adjustments that would result from the going concern basis becoming non-applicable.

1.3 Payments and receipts basis

Payments and receipts are recognised within the accounts on the date of transaction.

1.4 Investments

Investments of shares within Westmill Wind Farm are stated at historic cost.

1.5 Taxation

As a registered charity The Westmill Sustainable Energy Trust is entitled to taxation exemptions on all of its income and gains, properly applied for its charitable purposes.

1.6 Depreciation of Fixed Assets

Depreciation is provided in order to write off the cost of tangible fixed assets owned over their anticipated useful economic life (UEL) as follows:

Solar PV Panels - 25 years straight line

1.6 Fund accounting

Unrestricted funds are available for use at the discretion of the Trustees in the furtherance of the general objectives of the Charity.

Restricted funds are funds which are to be used in accordance with specific instructions imposed by donors or which have been raised by the Charity for a particular purpose. The aim and use of each restricted fund is set out in the notes of the financial statements.

Investment income and gains are allocated to the appropriate fund.

NOTES TO THE FINANCIAL STATEMENTS
FOR THE YEAR ENDED 31 DECEMBER 2021 (continued)

2. Income from donations

	Unrestricted funds 2021 £	Restricted funds 2021 £	Total funds 2021 £	Total funds 2020 £
Donations	43,616	11,630	55,246	37,748
	<hr/>	<hr/>	<hr/>	<hr/>
	43,616	11,630	55,246	37,748

3. Grants

	Unrestricted funds 2021 £	Restricted funds 2021 £	Total funds 2021 £	Total funds 2020 £
Art and Energy	-	500	500	-

4. Investment income

	Unrestricted funds 2021 £	Restricted funds 2021 £	Total funds 2021 £	Total funds 2020 £
Feed In Tariff	-	-	-	-
Dividend	412	-	412	609
	<hr/>	<hr/>	<hr/>	<hr/>
	412	-	412	609

NOTES TO THE FINANCIAL STATEMENTS
FOR THE YEAR ENDED 31 DECEMBER 2021 (continued)

5. Charitable activities

	Unrestricted funds 2021 £	Restricted funds 2021 £	Total funds 2021 £	Total funds 2020 £
Education	(927)	(12,432)	(13,359)	(11,566)
Visits	(7,455)	-	(7,455)	(2,215)
Events	-	-	-	(19,165)
Westmill Centre	-	(6,023)	(6,023)	(11,581)
Grants and donations	-	-	-	(711)
	<u>(8,382)</u>	<u>(18,455)</u>	<u>(26,836)</u>	<u>(45,237)</u>

6. Other costs

	2021 £	2020 £
Independent Examiner's fees	(1,500)	-
Premises costs	(23,441)	(699)
Administration costs	(1,108)	(1,164)
Sundry costs	-	(477)
Depreciation	(885)	(885)
	<u>(26,934)</u>	<u>(3,225)</u>

7. Staff costs

During 2021, WeSET had no employees (2020: 0). The progression of WeSET's objectives was achieved by its Trustees, contractors and volunteers.

NOTES TO THE FINANCIAL STATEMENTS
FOR THE YEAR ENDED 31 DECEMBER 2021 (continued)

8. Fixed assets

	Solar Panels
Cost	
As at 1 January 2021	<u>22,142</u>
As at 31 December 2021	<u>22,142</u>
Depreciation	
As at 1 January 2021	4,040
Charge for the period	<u>885</u>
As at 31 December 2021	<u>4,925</u>
Net book value	
As at 1 January 2021	<u>18,102</u>
As at 31 December 2021	<u>17,217</u>

9. Investments

Westmill Wind Farm Shares	9,137
---------------------------	-------

NOTES TO THE FINANCIAL STATEMENTS
FOR THE YEAR ENDED 31 DECEMBER 2021 (continued)

10. Statement of funds

Statement of funds - current year

	Balance at 1 January 2021	Income	Expenditure	Balance at 31 December 2021
Unrestricted funds				
Unrestricted funds	60,877	44,028	(35,316)	69,589
Restricted funds				
School Energy Resource Packs	9,939	1,630	(12,432)	(864)
People's Power Station live website enhancement	450	-	-	450
Warm room at Westmill site	(7,736)	10,000	(6,023)	(3,758)
Low Carbon Hub	1,500	-	-	1,500
Art and Energy	-	500	(1,000)	(500)
	<u>4,153</u>	<u>12,130</u>	<u>(19,455)</u>	<u>(3,172)</u>
	<u>65,030</u>	<u>56,158</u>	<u>(54,770)</u>	<u>66,417</u>

Restricted funds

The School Energy Resource Packs comprises of funds donated by Westmill Solar Coop for the development and publishment of educational materials.

Website enhancement was to install a live dashboard on their website showing real time energy production.

Warm room at Westmill has developed into the "Westmill Centre", assessing the feasibility, and installation of a centre based on the Westmill farm.

Low Carbon Hub fund to produce educational materials.

Art and Energy is the first of two instalments helping to fund the Moths to a Flame materials.

NOTES TO THE FINANCIAL STATEMENTS
FOR THE YEAR ENDED 31 DECEMBER 2021 (continued)

Statement of funds - prior year

	Balance at 1 January 2020	Income	Expenditure	Balance at 31 December 2020
Unrestricted funds				
Unrestricted funds	60,289	29,466	(28,878)	60,877
Restricted funds				
School Energy Resource Packs	9,052	8,890	(8,003)	9,939
People's Power Station live website enhancement	450	-	-	450
Warm room at Westmill site	3,845	-	(11,581)	(7,736)
Carbon Hub	1,500	-	-	1,500
	<u>14,847</u>	<u>8,890</u>	<u>(19,584)</u>	<u>4,153</u>
	<u>75,136</u>	<u>38,356</u>	<u>(48,462)</u>	<u>65,030</u>

11. Analysis of net assets between funds

	Unrestricted funds 2021 £	Restricted funds 2021 £	Total funds 2021 £
Fixed assets	17,217	-	17,217
Investments	9,137	-	9,137
Current assets	43,235	(3,172)	40,063
	<u>69,589</u>	<u>(3,172)</u>	<u>66,417</u>

THE WESTMILL SUSTAINABLE TRUST

England & Wales - Charity number 1158820

Accounts

Charity number: 1158820

The Westmill Sustainable Energy Trust
(WeSET)
A Charitable Incorporated Organisation



TRUSTEES' REPORT AND FINANCIAL STATEMENTS
FOR THE YEAR ENDED 31 DECEMBER 2020

The Westmill Sustainable Energy Trust
A Charitable Incorporated Organisation

CONTENTS

	Page
Reference and administrative details of the charity, its trustees and advisers	3
Trustees' report	4 - 7
Independent examiner's report	8
Statement of financial activities	9
Balance sheet	10
Notes to the financial statements	11 - 15

The Westmill Sustainable Energy Trust

REFERENCE AND ADMINISTRATIVE DETAILS OF THE CHARITY, ITS TRUSTEES AND ADVISERS
FOR THE YEAR ENDED 31 DECEMBER 2020

Trustees

Mike Blanch, Chairman
Fran Tattersall
Robert Tapsfield
Chris Church
Sarah James
Dr Paul Donald Beattie
Cecilia Park Olley
Liam Wilson (appointed 18 May 2020)

Charity registered number

1158820

Registered office

8 Maple Gardens, Milton, Abingdon, OX14 4GP

Website

<https://www.weset.org/>

Independent Examiner

J.R. Mercer Associates Ltd
48 Chelworth Road. Cricklade. Wilts. SN6 6HD

Bankers

The Co-operative Bank

The Westmill Sustainable Energy Trust

TRUSTEES' ANNUAL REPORT FOR THE YEAR ENDED 31 DECEMBER 2020

Introduction

The Trustees present their report and financial statements for the year ended 31 December 2020 under the Charities Act 2011, together with the unaudited financial statements for the year, and confirm that the latter comply with the requirements of the Charities SORP (FRS 102) and the Charity's Memorandum and Articles of Association.

Westmill Energy Sustainable Energy Trust is a registered charity in England and Wales (number 1158820).

Objectives and activities

1. Education Packs

Following from work started in 2019, six originally agreed education pack lesson materials were completed including a range of tasks and suggested activities. The six lessons were:

1. Energy
2. Electricity
3. Story of Westmill
4. Wind power
5. Solar power
6. Sustainable Future

Each lesson includes:

- One presentation with presenter notes and embedded video clips
- One detailed delivery guide
- One single page lesson plan
- Printable worksheets (colour and black and white options)
- Digitally fillable worksheet
- Worksheet with answers

These are now available from our website.

In response to continued Covid induced lockdowns we began to create video versions of all 6 lessons with voice overs. These were completed in January 2021 and are now all online.

In collaboration with Osney Lock Hydro, 3 lesson packs were developed which are co-hosted on the WeSET website.

These are titled:

7. Hydropower
8. Osney Lock Hydro
9. The Fish Pass

Following these, production of 3 more lesson packs was started and finished in 2021:

10. Electric Vehicles
11. RE Storage
12. RE in the Home and Workplace

2. Visits

2020 proved to be a challenging year for tours of the Westmill Wind Farm and Solar Park - due to restrictions imposed by the Government surrounding the COVID-19 pandemic.

The Westmill Sustainable Energy Trust

TRUSTEES' ANNUAL REPORT FOR THE YEAR ENDED 31 DECEMBER 2020

A team of two-dozen students studying for a Masters degree in Energy Policy at Imperial College London visited Westmill in January to see in person the technologies covered in lectures, and to discuss the unique features of Westmill's community ownership. Imperial students visited in 2019 and were glad to return again.

In February, television network London Live arrived at Westmill to film a piece for its output, and car manufacturer Mini choose Westmill as a backdrop to shoot a promotional film for its vehicles. Another educational trip was also made this month, as students from Kingston University arrived to experience operational aspects of wind and solar farms.

During March, the decision was taken to postpone all ad-hoc visits and public visiting days to Westmill due to a national lockdown imposed by the Government, restricting all social interaction. This proved to be a problem for the Westmill community which found it impossible to effectively continue its outreach with the public and beyond. Ten ad-hoc tour requests to visit Westmill were either refused, cancelled or postponed. And seven public visiting days were also cancelled.

As summer approached, a virtual tour of the site was planned: a visual excursion of Westmill, including site footage mixed with informative graphic sequences, and all narrated live by one of the team of volunteer guides. A few of the Westmill team visited the site to for a day's shoot. to gather material for the film. The first virtual tour took place in November with a second in December, with both tours welcoming over 30 (32) people - including many from overseas who would not normally be able to make a physical visit to site. These tours are continuing in 2021.

Some film crews were welcomed to Westmill during the autumn. In September, media production outfit The Alpha Grid used the site as a backdrop for a short documentary with the FT and Iberdrola on new technological innovations in solar. And in December, a film crew from Coldhouse Collective arrived at Westmill to shoot a short film to increase awareness of the potential to embed ecosystem benefits into solar parks - which included an interview Chris Hewlett, CEO of the Solar Trade Association.

3. Westmill Centre

During the course of 2020 we continued to investigate the possibility of a Centre at Westmill. Unfortunately, once all costed up we forecast to have little to no contingency and breaking ground held too much risk for us. As we write in 2021, we continue to assess our options, are on the look out for grants, and as ever welcome donations through our Virgin money giving page not only for a centre but to continue our educational work.

4. People matter

The Trustees would like to thank all those who volunteered time and effort to make WeSET so successful. It has been a difficult year and we really appreciate your support and patience.

5. We want to give

We are happy to share our documents as examples of what is needed to become a CIO – every energy scheme should have one!

6. You

If what you have read interests you in anyway, please get in touch and get involved. We welcome views on how we can best to promote the sustainable use of energy. please contact: Mike Blanch, 8 Maple Gardens, Milton, Abingdon, michaelblanch@btinternet.com

The Westmill Sustainable Energy Trust

TRUSTEES' ANNUAL REPORT (continued) FOR THE YEAR ENDED 31 DECEMBER 2020

5. Structure, governance and management

The Westmill Sustainable Trust is a registered charitable incorporated organisation (CIO), charity number 1158820 constituted by a constitution dated 18 June 2014. Previously it had been a registered Charity, charity number 1132379, constituted by trust deed dated 27 January 2009. The CIO charitable structure was not available when WeSET was originally formed and the 1132379 charity was formerly closed in January 2019.

As far as possible 65% of Trustees should be members of either Westmill Wind Farm or Westmill Solar Farm, and 65% of Trustees should reside within 25 miles of Westmill Wind Farm (SN6 8TH).

6. Objects

The objects of The Westmill Sustainable Trust are to promote the advancement of environmental protection or improvement for the benefit of the public, in particular but not exclusively, within 25 miles of Westmill Wind and Solar Farms (SN6 8TH) by promoting the deployment of sustainable energy, promoting education in the deployment of sustainable energy and making grants to such persons or organisations as the trustees see fit in order to promote and encourage the deployment of sustainable energy.

7. Recruitment and appointment of new trustees.

Applications to be a trustee are welcome at any time. Appointment of new trustees is subject to meeting the eligibility for trusteeship in the constitution and agreement, and a majority vote in favour by the charity trustees who must have regard to the skills, knowledge and experience needed for the effective administration of the charity.

8. Trustees' responsibilities

Charity law requires the Trustees to prepare a receipts and payments account and statement of assets and liabilities for each financial year. These are to give a true and fair view of the state of affairs of the charity and of its financial activities for that year, to properly present the charity's receipts and payments for the year together with its assets and liabilities at the end of the year, and to adequately distinguish any material special trust or other restricted fund of the charity. In preparing those financial statements, the Trustees are required to:

- a) select suitable accounting policies and apply them consistently
- b) make judgement and estimates that are reasonable and prudent
- c) state whether applicable accounting standards and statements of recommended practice have been followed, subject to any departures disclosed and explained in the financial statements, and
- d) prepare the financial statements on a going concern basis unless it is appropriate to presume that the Charity will not continue in operation.

The Trustees are responsible for keeping accounting records which disclose with reasonable accuracy the financial position of the Charity, enable them to ascertain the financial position of the Charity, and enable them to ensure that the financial statements comply with applicable law and regulations. They are also responsible for safeguarding the assets of the Charity and hence for taking reasonable steps for the prevention and detection of fraud and other irregularities. In the opinion of the Trustees the Charity is entitled to prepare accounts on a receipts and payments basis.

9. Financial Review

Income fell in 2020 as result of our Coop partners paying early in the last months of 2019, and late in the early months of 2021.

The Westmill Sustainable Energy Trust

INDEPENDENT EXAMINER'S REPORT FOR THE YEAR ENDED 31 DECEMBER 2020

Significantly WeSET was in receipt of a generous gift of £8,500 Westmill Wind Farm shares in 2019 causing the apparent fall in income.

Donations in the year fell by approximately 50%, likely due to our reduced exposure to members of the public through visits and events due to Coronavirus.

Expenditure increased in educational resources as we focused our attention on developing the packs and virtual tours. Most significantly, in comparison to 2019, expenditure on Westmill Centre professional fees rose as we continued to assess the suitability of the plans.

We finish the year with a balance sheet that ensures we can continue to provide our services, whilst the board of trustees assess our options for Centres, installations, events and increasing interactions with the members of public.

9.1 Policy on reserves

It is the policy of the charity to seek to maintain reserves of £3,000 to maintain contracts with consultants delivering work especially in the beginning months of the financial year before expected income is received.

9.2 Risk management

The fixed operating costs of the charity are primarily fees to consultants. The Trustees consider that this prudent closing cash balance policy minimises the risks to which the charity is exposed.

Approved by the Board of Trustees on _____ and signed on its behalf by

Mike Blanch, Chairman

The Westmill Sustainable Energy Trust

INDEPENDENT EXAMINER'S REPORT
FOR THE YEAR ENDED 31 DECEMBER 2020

Independent examiners report to the Trustees of The Westmill Sustainable Energy Trust

I report to the charity Trustees on my examination of the accounts of the company for the year ended 31 December 2020, which are set out on pages 9 to 15.

This report is made solely to the charitable company's Trustees. My independent examiner's work has been undertaken so that I might state to the charity's Trustees those matters I am required to state to them in an Independent examiner's report and for no other purpose. To the fullest extent permitted by law, I do not accept or assume responsibility to anyone other than the charity, the charity's members as a body and the charity's Trustees as a body, for my independent examiner's work, for this report or for the opinions I have formed.

Responsibilities and basis of report

As the charity's Trustees you are responsible for the preparation of the accounts.

Having satisfied myself that the accounts of the Charity are not required to be audited under Part 16 of the 2006 Act and are eligible for independent examination, I report in respect of my examination of the Charity's accounts carried out under section 145 of the Charities Act 2011 ('the 2011 Act'). In carrying out my examination I have followed the Directions given by the Charity Commission under section 145(5)(b) of the 2011 Act.

Independent examiner's statement

I have completed my examination. I can confirm that no matters have come to my attention in connection with the examination giving me cause to believe:

1. accounting records were not kept in respect of the company as required by section 386 of the 2006 Act; or
2. the accounts do not accord with those records; or
3. the accounts do not comply with the account requirements of section 396 of the 2006 Act other than any requirement that the accounts give a 'true and fair' view which is not a matter considered as part of an independent examination; or
4. the accounts have not been prepared in accordance with the methods and principles of the Statement of Recommended Practice for accounting and reporting by charities [applicable to charities preparing their accounts in accordance with the Financial Reporting Standard applicable in the UK and Republic of Ireland (FRS 102)].

I have no concerns and have come across no other matters in connection with the examination to which attention should be drawn in the report in order to enable a proper understanding of the accounts to be reached.

Signed:



Dated:

1st December 2021

The Westmill Sustainable Energy Trust

RECEIPTS AND PAYMENTS ACCOUNT
FOR THE YEAR ENDED 31 DECEMBER 2020

		Unrestricted funds 2020 £	Restricted funds 2020 £	Total funds 2020 £	Total funds 2019 £
Receipts from:	Notes				
Donations	2	28,858	8,890	37,748	60,170
Grants	3	-	-	-	1,500
Investments	4	609	-	609	1,813
Total receipts		29,466	8,890	38,356	63,483
Payments for:					
Charitable activities	6	25,653	19,584	45,237	22,879
Other	7	3,225	-	3,225	3,566
Total payments		28,878	19,584	48,462	26,445
Net of receipts/(payments)		588	(10,694)	(10,106)	37,039
Cash funds this year		33,576	4,153	37,729	46,950

The notes on pages 11 to 15 form part of these financial statements.

The Westmill Sustainable Energy Trust

BALANCE SHEET
FOR THE YEAR ENDED 31 DECEMBER 2020

	Notes	2020 £	2019 £
Fixed assets			
Fixed assets	9	18,102	18,987
Investments	10	9,137	9,137
Current assets			
Cash at bank and in hand		37,791	47,012
Net assets		<u>65,030</u>	<u>75,136</u>
Charity funds			
Restricted funds	10	4,153	14,847
Unrestricted funds	10	60,877	60,289
Total funds		<u>65,030</u>	<u>75,136</u>

The Trustees consider that the Charity is entitled to exemption from the requirement to have an audit under the provisions of section 477 of the Companies Act 2006 ("the Act") and members have not required the Charity to obtain an audit for the year in question in accordance with the section 476 of the Act.

The financial statements were approved and authorised for issue by the Trustees on signed on their behalf, by:

Mike Blanch, Chairman

The notes on pages 11 to 15 form part of these financial statements.

The Westmill Sustainable Energy Trust

NOTES TO THE FINANCIAL STATEMENTS FOR THE YEAR ENDED 31 DECEMBER 2020

1. Accounting policies

The Westmill Sustainable Energy Trust is a charitable incorporated organisation (registered charity number 1158820). Its registered office and principle place of business is 8 Maple Gardens, Milton, Abingdon, EX14 4GP.

1.1 Basis of preparation of financial statements

The financial statements have been prepared in accordance with Accounting and Reporting by Charities: Statement of Recommended Practice applicable to charities preparing their accounts in accordance with the Financial Reporting Standard applicable in the UK and Republic of Ireland (FRS 102) (effective 1 January 2015) - Charities SORP (FRS 102)), the Financial Reporting Standard applicable in the UK and Republic of Ireland (FRS 102), the Charities Act 2011. The financial statements have been prepared under payments and receipts basis.

The Westmill Sustainable Energy Trust meets the definition of a public benefit entity under FRS 102.

1.2 Going concern

These financial statements have been prepared on a going concern basis, which the Trustees consider to be appropriate as a result of projections prepared, which together with the level of working capital and realisable investments available indicate the charity will be able to operate within the facilities currently available. There are no material uncertainties about the Charity's ability to continue. The financial statements do not include any adjustments that would result from the going concern basis becoming non-applicable.

1.3 Payments and receipts basis

Payments and receipts are recognised within the accounts on the date of transaction.

1.4 Investments

Investments of shares within Westmill Wind Farm are stated at historic cost.

1.5 Taxation

As a registered charity The Westmill Sustainable Energy Trust is entitled to taxation exemptions on all of its income and gains, properly applied for its charitable purposes.

1.6 Depreciation of Fixed Assets

Depreciation is provided in order to write off the cost of tangible fixed assets owned over their anticipated useful economic life (UEL) as follows:

Solar PV Panels - 25 years straight line

The Westmill Sustainable Energy Trust

NOTES TO THE FINANCIAL STATEMENTS
FOR THE YEAR ENDED 31 DECEMBER 2020

1.6 Fund accounting

Unrestricted funds are available for use at the discretion of the Trustees in the furtherance of the general objectives of the Charity.

Restricted funds are funds which are to be used in accordance with specific instructions imposed by donors or which have been raised by the Charity for a particular purpose. The aim and use of each restricted fund is set out in the notes to the financial statements.

Investment income and gains are allocated to the appropriate fund.

2. Income from donations

	Unrestricted funds 2020 £	Restricted funds 2020 £	Total funds 2020 £	Total funds 2019 £
Donations	28,858	8,890	37,748	60,170
	28,858	8,890	37,748	60,170

3. Grants

	Unrestricted funds 2020 £	Restricted funds 2020 £	Total funds 2020 £	Total funds 2019 £
Low Carbon Hub	-	-	-	1,500

4. Investment income

	Unrestricted funds 2020 £	Restricted funds 2020 £	Total funds 2020 £	Total funds 2019 £
Feed In Tarriff	-	-	-	1,604
Dividend	609	-	609	209
	609	-	609	1,813

The Westmill Sustainable Energy Trust

NOTES TO THE FINANCIAL STATEMENTS
FOR THE YEAR ENDED 31 DECEMBER 2020

5. Charitable activities

	Unrestricted funds 2020 £	Restricted funds 2020 £	Total funds 2020 £	Total funds 2019 £
Education	3,563	8,003	11,566	4,384
Visits	2,215	-	2,215	4,721
Events	19,165	-	19,165	9,386
Westmill Centre	-	11,581	11,581	4,387
Grants and donations	711	-	711	-
	25,653	19,584	45,237	22,879

6. Other costs

	2020 £	2019 £
Independent examiner's fees	-	900
Premises costs	699	839
Administration costs	1,164	248
Sundry costs	477	694
Depreciation	885	885
	3,225	3,566

7. Staff costs

During 2020, WeSET had no employees (2019: 0). The progression of WeSET's objectives was achieved by it's Trustees, contractors and volunteers.

8. Fixed assets

	Solar Panels
Cost	
As at 1 January 2020	22,142
As at 31 December 2020	22,142
Depreciation	
As at 1 January 2020	3,156
Charge for the period	886
As at 31 December 2020	4,042
Net book value	
As at 1 January 2020	18,986
As at 31 December 2020	18,100

The Westmill Sustainable Energy Trust

NOTES TO THE FINANCIAL STATEMENTS
FOR THE YEAR ENDED 31 DECEMBER 2020

9. Investments

Westmill Wind Farm Shares	9,137
---------------------------	-------

10. Statement of funds

Statement of funds - current year

		Balance at 1 January 2020	Income	Expenditure	Balance at 31 December 2020
Unrestricted funds					
	Unrestricted funds	60,289	29,466	(28,878)	60,877
ID Restricted funds					
2.10	School Energy Resource Packs	9,052	8,890	(8,003)	9,939
3.10	People's Power Station live website enhancement	450	-	-	450
5.10	Warm room at Westmill site	3,845	-	(11,581)	(7,736)
8.00	Carbon Hub	1,500	-	-	1,500
		14,847	8,890	(19,584)	4,153
		75,136	38,356	(48,462)	65,030

Restricted funds

The School Energy Resource Packs comprises of funds donated by Westmill Solar Coop for the development and publication of educational materials.

Website enhancement was to install a live dashboard on their website showing real time energy production.

Warm room at Westmill has developed into the "Westmill Centre", assessing the feasibility, and installation of a centre based on the Westmill farm.

The Westmill Sustainable Energy Trust

NOTES TO THE FINANCIAL STATEMENTS
FOR THE YEAR ENDED 31 DECEMBER 2020

10. Statement of funds (continued)

Statement of funds - prior year

	Balance at 1 January 2019	Income	Expenditure	Balance at 31 December 2019
Unrestricted funds				
Unrestricted funds	31,397	46,983	(17,206)	60,289
ID Restricted funds				
2.10 School Energy Resource Packs	13,018	-	(3,966)	9,052
3.10 People's Power Station live website enhancement	450	-	-	450
5.10 Warm room at Westmill site	(6,767)	15,000	(4,387)	3,845
8.00 Carbon Hub	-	1,500	-	1,500
	<u>6,700</u>	<u>16,500</u>	<u>(8,353)</u>	<u>14,847</u>
	<u>38,097</u>	<u>63,483</u>	<u>(25,560)</u>	<u>75,136</u>

11. Analysis of net assets between funds

	Unrestricted funds 2020 £	Restricted funds 2020 £	Total funds 2020 £
Fixed assets	18,102	-	18,102
Investments	9,137	-	9,137
Current assets	33,638	4,153	37,791
	<u>60,877</u>	<u>4,153</u>	<u>65,030</u>