



ANNUAL REPORT 2022

CHAIRPERSON'S REPORT

Here we are one year into our new five-year initiative, The Portland Project, part-funded by the National Lottery Community Fund and the catalyst that made it possible, Portland Town Council, whose commitment to provide match funding across the same five-years provided the final incentive for the National Lottery's agreement to fund.

Just a few months prior to their decision, there was a period in which we were looking at a totally different scenario, which included everything from a major reduction in our services to complete closure. As a volunteer organisation, sometimes you feel that success makes you invisible; you are so much part of the community infrastructure that people assume you will always be there; well, we almost weren't there.

Thankfully, however, through an expanded offer, supported by a Service Level Agreement with Portland Town Council to deliver a defined set of activities and services, we secured the essential National Lottery funding required to move forward into a new delivery era.

The National Lottery funding comes with its set of targets and deliverables. For the most part, this excludes our older people's project, Helping Hands, which we must now fund separately through our generated service income, local and legacy giving, grant applications and annual fundraising events and activities. Helping Hands is long-standing project and provides support that is greatly needed and valued. Our community's loyalty has helped some of its services become self-funding, however, with increasing demand and shrinking statutory sector services become more prevalent, we are having to fight hard to ensure its survival.

On an incredibly positive note, The Portland Project has met all of the targets set by the National Lottery and Portland Town Council. This is a great achievement because the project supports a much wider range of activities, including expanded workstreams for volunteering, creativity, food and the environment, children, families and young people and community development. This work has always been part of our portfolio; however, we are now able to take it forward as an extended offer. We have also been able to integrate our COVID-19 activities, many of which are aimed at tackling isolation and loneliness. This combined provision is helping us to create new ways of addressing some of the broad challenges impacting local residents.

Government and statutory changes, emerging needs and deprivation rates are higher here than in most other Dorset areas and Nationally. The recently released 2021 Census results show that the elderly continue to retire to Dorset and young people and families continue to leave. This situation is further compounded by increasing levels of loneliness and isolation due to Portland's physical geography and lack of island-wide public transport, which make it harder for vulnerable and less mobile residents to access essential services, food and social activities. Combined, these changes are creating a cocktail of challenges for our Island.

In England, between 2011 and 2021, there has been an increase of 20.1% in those aged 65+ (24.8% increase in Dorset), an increase of 3.6% in people aged 15 to 64 (2.8% decrease in Dorset) and a rise of 5.0% in children aged under 15 years (a 3.2% decrease in Dorset).

What inspires my hopes for success is the support not only offered by ICA but also Portland's other community-based organisations. On top of this there is the support offered by local people themselves. Our local community continually unites in a single mission to support the most vulnerable, regardless of age, background, gender, ethnicity, or belief. Successes such as these are down to the unselfish acts of individuals and the communities in which they live.

I want to thank every resident who helped achieve this over the last year, including our volunteers, ICA staff, our Board of Trustees, and our partners. Your energy, commitment, skills, and knowledge have been remarkable in these challenging times for everyone.



Doug Pigg

Chair – Island Community Action (ICA)

KEY FUNDERS & SPONSORS

GRANTS

ICA gratefully received grant funding contributions from the following organisations in 2022:



1. For ICA's The Portland Project initiative...

- **The National Lottery Community Fund: Reaching Communities** – Funding contribution towards a range of new and expanded workstreams. Funding running 2021-26.
- **Portland Town Council** – Match funding contribution under a new five-year Service Level Agreement contribution for The Portland Project. Cover several extended and new services.
- **Alice Ellen Cooper Dean Charitable Foundation** – For general core and project related costs
- **Dorset Youth Association** – Funding to cover a UK Year of Service nine month trainee job-share role (Youth Coordinator) with The Drop In.

2. For Helping Hands – ICA's older people's services....

- **Valentine Charitable Trust** – For general core and project related costs.

3. For ICA's Growing Local project...

- **Dorset Community Fund: Neighbourhood Fund** – Contribution towards Growing Local's food, growing and environment training sessions and activities.

4. For ICA's creative projects...

- **Dorset Community Fund: Let's Celebrate** – Contribution towards ICA and b-side's collaborative Jubilee project, Souvenirs of Place and Love.

5. For ICA's core costs...

- **Dorset Council: Organisational Support Revenue Fund** – Contribution towards ICA's core costs.

NON-GRANT DONATIONS & FUNDRAISING ACTIVITIES

In addition to ICA's successful grant applications, the charity was grateful to benefit from a range of local funding opportunities over the past 12 months, including

- **Albion Stone** – Towards our Christmas offer for older vulnerable people
- **Portland Court Leet** – Towards our Portland Volunteer's Jubilee Party and Christmas offer
- **The Rotary Club of Island & Royal Manor of Portland**
- **Portland Probus** – Towards Helping Hands
- **Portland residents** – Legacy and local donations towards our core costs

GENERATED INCOME

ICA generates income through a range of activities, including:

The Giving Lottery – An online alternative to ICA's original lottery at:

www.givinglottery.org.uk/support/island-community-action

One-off or regular donations – Made by cash, cheque, standing order or via Local Giving at: www.localgiving.com/charity/islandcommunityaction

Legacy gifts – Made via the donor's will, these contributions range from direct donations instead of flowers at a funeral to specified sums of money, a % of an entire estate or a particular item.

Donations of prizes – From unwanted gifts to free experiences, trips and treatments.

Merchandise

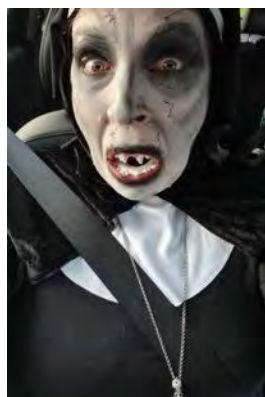
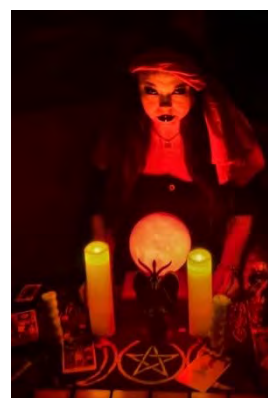
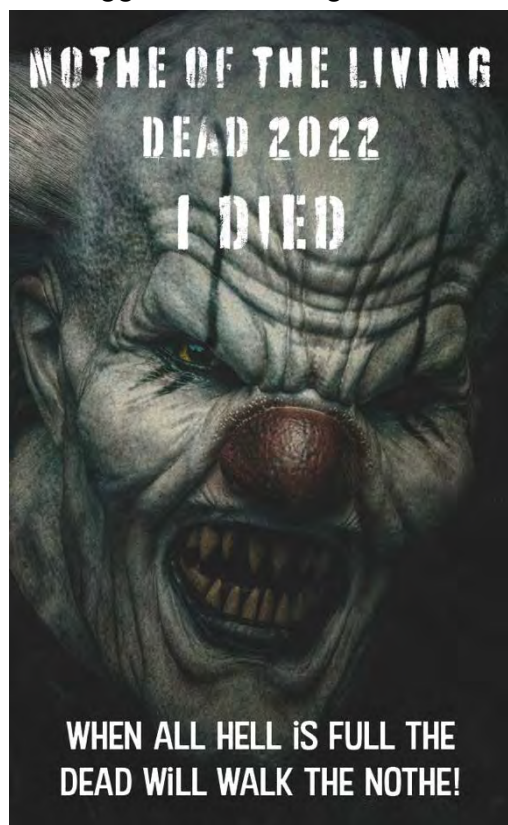
ICA sells cards, lottery tickets, merchandise and more. 2020 also saw us open our Teemill website at: <https://islandcommunityaction.teemill.com>



 <p>Unisex All merchandise printed on 100% organic cotton, using eco-friendly inks in a low carbon factory harnessing the power of renewable energy.</p>	 <p>Men's Add a splash of cool colour to your wardrobe with this stylish range of designer men's apparel. Perfect for you, for gifts, for all seasons.</p>	 <p>Women's Check out our collection of on trend merchandise, specifically designed for those who love unique, eye-catching designs and bold prints.</p>	 <p>Ammonite Women's Tee Designed by West Stone - London, this stylish Ammonite design pays homage to Portland's position as a Jurassic Coast fossil hotspot.</p>
 <p>Kid's From fun prints to perfect fits, this collection has been designed to make kids look good and feel amazing.</p>	 <p>Rainbow Kid's Tee Forget your troubles and get ready to spread some positive vibes with our colourful Believe in Rainbows Kid's Tee.</p>	 <p>Cult Portland's weird and wacky reputation comes to the fore with a quirky twist on some well known cult brands.</p>	 <p>Hoodies A fresh collection of hoodies designed to make maximum impact with cool designs and cotton softness.</p>
 <p>Love Love it in the air and we want you to hold it close to your heart with our new Love Portland collection.</p>	 <p>Love Portland UK Tee If you're proud to be a Portlander or simply love the island, why not tell the world about it with a Portland UK Tee.</p>	 <p>Wild This collection pays tribute to Portland's wilder side, from its fossils and fauna to its stormy seas and water sports.</p>	 <p>White Boat Kid's Tee A perfect choice for kids that love getting out on the water...or have a bit of a passion for all things boaty!</p>

FUNDRAISING EVENTS

ICA's biggest fundraising event was Nothe of the Living Dead – raising money for Silver Island.



See Nothe of the Living Dead promo at: <https://youtu.be/c5NaI81kaEk>

PROJECTS & SERVICES

The funding ICA received during 2022 supported 11 workstreams:

1. HELPING HANDS – OLDER PEOPLE + THOSE IMPACTED BY DISABILITY AND / OR SERIOUS, LIFE LIMITING OR TERMINAL ILLNESS (UNLESS OTHERWISE STATED) –

TABLE 1: SILVER ISLAND – ACTIVITIES / SERVICES DELIVERED FOR 2021

CORE SUPPORT			
Delivered by ICA staff, volunteers or external tutors to clients on an ongoing basis.			
At Home: Befriending (face-to-face)	At Home: Befriending (telephone)	At Home: ChAT (Portland and Wyke)	Art Group Gardening
Exercise: Get Together (seated)	Exercise: Osteocise (mid-range)	Exercise: Fit+ (advanced)	Exercise: Yoga
Food: The Dining Room (lunch club)	Food: Sunday Lunch Club	Good Neighbour Scheme: Small tasks and errands e.g. DIY, shopping, prescriptions, putting out the bins etc	Cratetivity Hampers Cratetivity (activity hampers for 'mind and body' delivered to the housebound)
Special events: e.g. Celebration events and Christmas offer	Shopping: In store	Social: Bingo (cash and prize)	Social: Coffee mornings
Pets: Dog walking	Transport: Medical and essential 'other' appointments	Transport: Other e.g. visiting relatives in care homes	Trips and outings

2. CHILDREN, YOUTH, FAMILIES – ICA are collaborating with relevant organisations, including Atlantic Academy, b-side, The Drop In, Portland Town Council and other local educational and youth providers, to support their work and also develop a range of complementary activities.

Over the year, this has included:

- Portland Youth Council
- Youth volunteering scheme
- Youth focused life and leadership skills training.

3. CREATIVE – FOR ALL AGES:

- Community Crafters (crafting for community-based good causes). Aimed at reducing isolation and loneliness and strengthening community and intergenerational bonds.

4. GROWING LOCAL (FOOD and ENVIRONMENT) – Helping make affordable, healthy and nutritious food more accessible, encouraging engagement with nature and the environment and increasing understanding around the links between climate change, the natural world and food.

Growing Local provides opportunities for residents to volunteer and participate in ‘hands-on’ activities that develop their skills and interest in growing and cooking, providing them with the confidence and knowledge to make healthier food choices, live more sustainably, adopt more eco-friendly lifestyles and feel more connected to their community and environment.

The emphasis is on simple and fun activities that keep participants engaged and empowered to progress, from cookery and growing courses to creating nature friendly outdoor spaces.

Growing Local is open to all, with an emphasis on those more susceptible to food poverty.

To deliver Growing Local, ICA has created a local stakeholder group consisting of Portland Town Council, Royal Manor Health Centre, Atlantic Academy, Portland 4 The Planet, Portland Foodbank, Portland Permaculture Group, NHS / CCG, Public Health Dorset, and a range of local experts and enthusiasts.

ICA are also working with EDEN Portland and Nottingham Trent University to deliver a range of new activities, including consultation and nature-based activities e.g. Slow Memory And A Flourishing Future – an inter-generational project focused on the environment and memory.

In addition, we are working with Atlantic Academy to develop a new wildlife and growing garden, as well as a cookery, growing and environment-based activities.

- 5. VOLUNTEER BUREAU** – Supporting those wishing to volunteer or offer volunteer roles, from recruitment to training and DBS checks.
- 6. COMMUNITY CONSULTATIONS** – ICA has three qualified Community Organisers who provide a range of community consultation services for ICA and other organisations.
- 7. COMMUNITY CONNECTORS** – Residents trained by ICA’s Community Organiser team to identify and signpost those in potential need of support.
- 8. COMMUNITY FORUM** – A space for local organisations to network, coordinate support, forward plan and build capacity.
- 9. COMMUNITY HUB** – Providing advice, information and signposting to local residents around a host of different subjects. ICA deals with around 7-8,000 queries a year.
- 10. COMMUNITY INFRASTRUCTURE SUPPORT** – Providing advice, information and training for other local community-based organisations.
- 11. COLLABORATIONS** – ICA continues to work in partnership with a number of groups and support structures, including: The Portland Resilience Committee and The Portland Hospital Working Group.

ACHIEVEMENTS – THE PORTLAND PROJECT

TABLE 2: CLIENT / PARTICIPATION NUMBERS ACHIEVED FOR YEAR 1 (2021-22)

WORKSTREAM KEY N/A = NO INDIVIDUAL TARGETS ORIGINALLY SET	NO. OF COURSES OR ACTIVITY SESSIONS		NO. OF INDIVIDUAL PEOPLE FOR EACH COURSE / SESSION		NO. OF INTERACTIONS (PEOPLE X ATTENDANCES)	
	YEAR 1 TARGET	YEAR 1 ACHIEVED	YEAR 1 TARGET	YEAR 1 ACHIEVED	YEAR 1 TARGET	YEAR 1 ACHIEVED
Befriending (face-to-face and telephone sessions with befrienders)	N-A	N-A	N-A	N-A	N-A	546
Club activities (art and exercise)	N-A	N-A	N-A	N-A	N-A	1,898
Good Neighbours errands (Includes basic DIY, prescription collections and deliveries and other small errands)	N-A	N-A	N-A	N-A	N-A	1,017
Food based activities (e.g. lunch clubs and foodie outings)	N-A	N-A	N-A	N-A	N-A	862
Purely social activities (non-food celebration and bingo)	N-A	N-A	N-A	N-A	N-A	2,741
Transport (essential appointments and activities)	N-A	N-A	N-A	N-A	N-A	1,356
Transport (in-store shopping)	N-A	N-A	N-A	N-A	N-A	185
Telephone catch-ups (by ICA office staff and volunteers – based on a minimum five calls per day x five days weekly x 48 weeks)	N-A	N-A	N-A	N-A	N-A	1,200
SUB-TOTAL – ACTUALS ACHIEVED				596		9,805
Portland Youth Council (Intro Presentations Delivered To 11-16 Years Olds Via Education / Youth Based Groups)	N-A	5	N-A	400+	N-A	400+
Youth Based Life And Leadership Skills Courses: Orienteering	N-A	5	N-A	22	N-A	22
SUB-TOTAL – ACTUALS ACHIEVED		1		422+		422+
Community Crafters	N-A	6	N-A	77	N-A	184
Cratativity hampers (containing treats and creative activities for older, vulnerable clients, those who are housebound and those impacted by disability and / or serious, life limiting or terminal illness). For the 2021-22 period these hampers were delivered for Christmas 2021.	N-A	1	N-A	103	N-A	103
The Portland Shed	N-A	240	N-A	55	N-A	1,440
SUB-TOTAL – ACTUALS ACHIEVED		247		235		1,727

WORKSTREAM	NO. OF COURSES OR ACTIVITY SESSIONS		NO. OF INDIVIDUAL PEOPLE FOR EACH COURSE / SESSION		NO. OF INTERACTIONS (PEOPLE X ATTENDANCES)	
	TARGET	ACHIEVED	TARGET	ACHIEVED	TARGET	ACHIEVED
Cooking Courses: Beginners – Courses = 4 sessions / number of sessions shown	12	16	30	70	120	280
Cooking Courses: Advanced – As above	12	16	30	37	120	148
Growing Courses: Beginners – As above	12	12	30	57	120	228
Growing Courses: Advanced Courses – As above	12	12	30	33	120	132
Specialist Courses: Cookery And Growing – individual workshops	6	6	60	68	60	68
Environment Activities: Large-scale activities with Atlantic Academy	2	2	300	330	300	330
Environment Activities: Portland Pickers – individual outings	3	3	30	36	60	66
SUB-TOTAL – ACTUALS ACHIEVED	59	67	510	631	900	1,252
COMMUNITY DEVELOPMENT						
Consultation events: Community Infrastructure Levy (face 2 face and / or digital @ various locations – for Portland Town Council)	N-A	17	N/A	1,051	N/A	1,051
Consultation events: Young People's Hopes for Portland (face 2 face @ Atlantic Academy / Yr 5s for Eden – Portland and Nottingham Trent University's Slow Memory project)	N-A	2	N/A	57	N/A	57
Consultation events: Digital Eden (face 2 Face @ Atlantic Academy / Yr 9s for Eden – Portland and Nottingham Trent University's Slow Memory project)	N-A	2	N/A	72	N/A	72
Community Forum (physical sessions = 3 / total members = 106, excluding ICA). Includes creation of the first publication of the Portland A to Z Community Directory. Currently being used a pilot by our Befriending Coordinator and office volunteers for client referrals. Will then be rolled out.	N-A	3	N/A	106	N/A	318
Infrastructure Support for local third sector community-based organisations (number of organisations supported)	N-A	N-A	N-A	5	N/A	13
Community Connectors. 15 local organisations have already agreed to receive staff training as Phase 1 Community Connectors (DELIVERING FROM 2023).	N/A	N/A	N/A	N/A	N/A	N/A
SUB-TOTAL – ACTUALS ACHIEVED		24		1,291		1,511
GRAND-TOTAL – ACTUALS ACHIEVED				3,175	12,000	14,717

NB: The numbers above do include repeats. However, we are confident that the number of separate individuals engaged exceeds 2,000

HIGHLIGHTS

GROWING AND ENVIRONMENT

From sourdough and baking courses to foraging walks, BioBlitz's and Island cleans, ICA's Growing Local has continued to expand our community's love of food, growing and nature.



GROWING AND ENVIRONMENT

Community Crafters was created during the COVID-19 lockdown period in attempt to help reduce levels of local isolation and loneliness through community-based crafting activities. The idea being to encourage and support local residents across all generations to use their crafting and creative skills for local good causes.

Two years later the project is still running and getting stronger, with hundreds of participants taking part from home, in groups or at specially organised events.

WILD & WOOLLY – STAGE 1 INSTALLATION FOR SUMMER 2022



WILD & WOOLLY – STAGE 2 INSTALLATION FOR WINTER 2022



Island Community Action - ICA

30 September 2022 · 📍

Time to get creative again!

We are asking for crafty people to get involved in the second wave of our current Community Crafters project 'Wild 'n' Woolly.'

This time we are going for a winter and Christmas theme. In particular, we need knitted, crocheted, sewn or felted 6"x6" green squares and white snowflakes! Robins, baubles, holly and any other festive creation you can think of are also welcome.

We have patterns, if needed.

Finished items need to be dropped into our office before the 25th of November.

Call us on 01305 823789 for more info.



**WILD
'N'
WOOLLY**

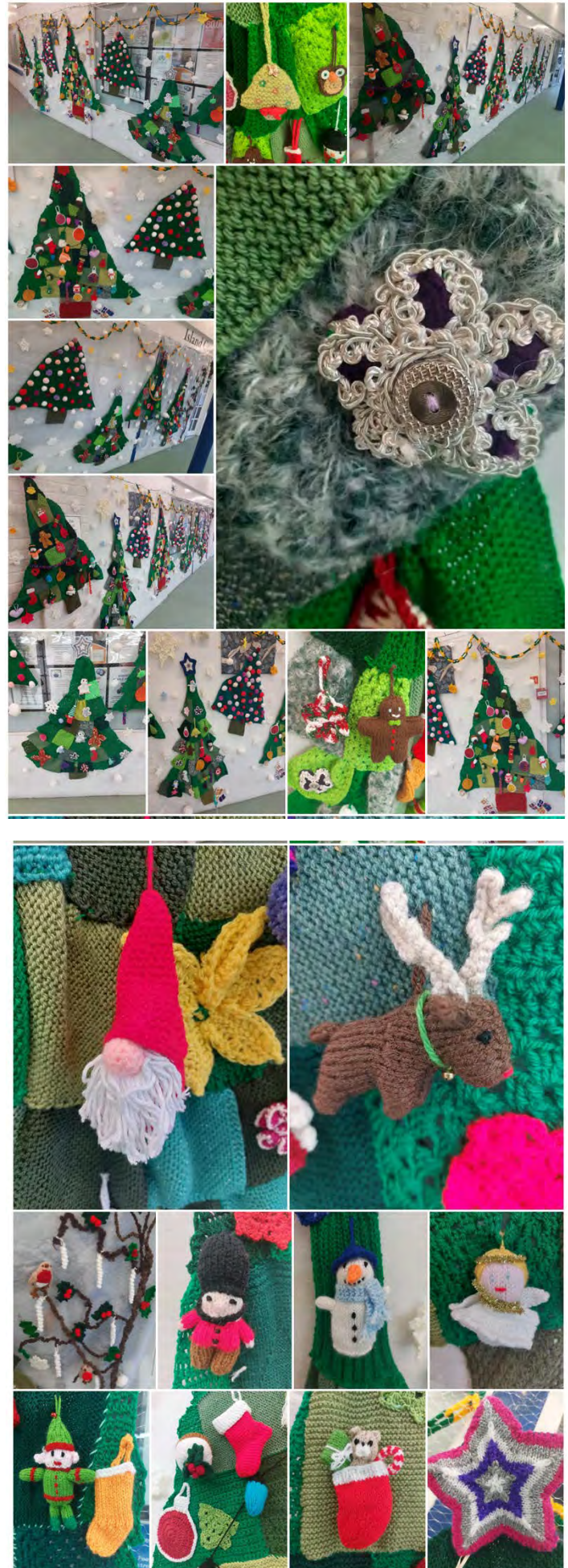
Let's get creative with knitting, crocheting, felting or sewing 6"x6" green squares, snowflakes, robins and winter wonders associated with Christmas and winter! Patterns available ICA.

Items will be displayed and enjoyed on Portland.

Drop off items by Friday 25th Nov.



Phone 01305 823789 for more info



WARM SPACES

Warm Spaces Update

LEAVE A COMMENT 21ST DECEMBER 2022 ICAPORTLAND

Here is a list of current activities and warm spaces across Portland for December 2022 into 2023.

This is an evolving list that we plan to update monthly. If you are an organisation please let us have any changes or additions by the end of the month for inclusion the following month.

The spaces and activities listed on this timetable are free to attend, however, refreshments and / or snacks may cost extra. Unless otherwise stated, activities are run by the venue at which the activity is held.

No formal COVID-19 restrictions are currently in place, however, feel free to continue wearing a mask and using sanitiser etc.



MONDAY

Coffee Morning: Bringing the community together over a warm brew. 9.30am-12.00pm at The Islanders Youth and Community Centre, East Weare Road, Verne Common. Adults only.

Coffee Morning (run by The Salvation Army): 10.00-11.30am at the Easton Methodist Church, Easton.

Cuppa and Company: 10:30am-12:00pm at Portland Library, Easton. Space limited due to the library's size.

The Drop In: Safe, inclusive space for young people. 6.30-8.00pm (for those aged 11-14) at The Portland Community Venue, Three Yards Close, Fortuneswell.

TUESDAY

Coffee Morning: 10.00-11.30am at the Community 2000 Hall (C2000), Straits, Easton.

The Drop In: Safe, inclusive space for young people. 6.00-7.30pm (for those aged 8-11) at The Portland Community Venue, Three Yards Close, Fortuneswell.



ENGAGEMENT HIGHLIGHTS



Island Community Action - ICA

Published by Kim Wilcocks • 30 November 2022 •

Just a little snippet of what we've been doing over the past three months!

Thank you to the following organisations, all of whom have either supported or partnered our work over this period.

[The National Lottery Community Fund...](#) See more



QUARTERLY UPDATE

A few of ICA's highlights from September, October and November.

Advice, Information and Support

416 meals served at our lunch clubs, 1,270 interactions at our cash and prize bingo sessions (+ 96 interactions at our other social activities).

7,380 enquires about ICA services responded to.

2,522 enquires about 'non-ICA' services, including tourist information, referral enquiries and local recommendations, responded to.

Education and Empowerment

100's of handcrafted items donated by local Community Crafters for our Wild 'n' Woolly project (touring the Island over the coming months).

Portland's first Youth Council launched in partnership with Portland Town Council. The 10 young people engaged in the project have gained training on manifesto writing, consultation research and teamwork. They have also received support with writing their constitution.

24 volunteers from local charities trained in Emergency First Aid with St John Ambulance.

Consultation and Collaboration

90 volunteers supported the delivery of our Nothe of the Living Dead Halloween fundraiser - a two day even run in collaboration with ICA, Epic Games Dorset and The Nothe Fort.

22 people represented local organisations at our Community Forum where we shared info about funding and research.

334
People reached

22
Engagements

↓ -5.1x lower
Distribution score

Boost post

CONSULTATIONS

ICA delivered two consultations. The first was with Portland's young people in support of our collaboration with Eden Portland and Nottingham Trent University's Slow Memory project. The project focuses on the use of memory to encourage future guardianship of the environment. This consultation has helped to shape the development of our Wildlife and Growing Garden at Atlantic Academy.

NTU so enjoyed their experience, they came back to Portland in June with 70 international Slow Memory members to hold their annual conference, which ICA coordinated.



I think there should be more Paper Straws although they are disgusting IT helps stop climate change.
There should be an Eden Project on Portland.
More sculptures made of recycled plastic
Animal Protection
Nilla

We Could: (by Olivia Year 5B)

- Host a festival
- Signs
- Make big protests
- a big presentation at the heights.
- Do art representing Portland
- Make a awareness poster and stick it too lamp posts.
- Plant trees

What I want to do is stop animals from being extinct and make flowers for the bees to keep them alive.
Shreene BISS
help the animals they need us

No take -
Animal center
No pesticides to stop people from killing bugs
Teach kids how to clean up in school
Clean up
Litter
Don't throw trash

The second, for Portland Town Council, asked local people how they would like the Community Infrastructure Levy spent.

RESULTS BY AGE

1,051 residents responded.

AGE OF RESPONDENTS	% OF RESPONDENTS	NUMBER OF RESPONDENTS
11-15	24.16	253
16-24	5.44	57
25-34	7.35	77
35-44	10.32	108
45-54	12.51	131
55-64	17.00	178
65+	20.15	211
Prefer not to say	3.06	32
Answered	99.99	1,047
Skipped	0.01	4
TOTAL	100.00	1,051

RESULTS IN ORDER OF PROJECT PREFERENCE

PROJECT	% OF RESPONDENTS SELECTING PROJECT IN TOP THREE CHOICES	NUMBER OF TIMES PROJECT SELECTED IN RESPONDENT'S TOP THREE CHOICES
Support Osprey Leisure Centre – providing new equipment and better access to the pool	54.14%	569.00
Create a skate park at the Royal Manor Playing Field	36.54%	384.00
Create a free access outdoor 'trim trail' (outdoor gym equipment)	27.97%	294.00
Refurbish and improve the current playparks at Easton Gardens and Sweethill Lane	24.64%	259.00
Provide an accessible public toilet at Victoria Gardens	23.79%	250.00
Refurbish and improve the current skate park facility at Chiswell (next Masonic car park)	23.69%	249.00
Use consultants to survey a new cycleway from Underhill to Southwell	20.17%	212.00
Create new community allotment areas in Tophill and Underhill	19.04%	200.00
Refurbish and improve the MUGA facility at the Royal Manor Playing Field	15.89%	167.00
Install new traffic calming measures – advisory speed cameras and signage	14.27%	150.00
Refurbish the multi-use games area (MUGA) at West Weares, overlooking Chesil Cove	13.13%	138.00
Refurbish and improve the current playpark at Victoria Gardens	12.94%	136.00
Install solar panels at the Portland Community Venue	9.51%	100.00
Create a chapel of repose and reflection at Weston Cemetery	4.28%	45.00
TOTAL (EACH RESPONDENT HAD THREE VOTES, HENCE 300% AND 3,153 RESPONSES)	300.00%	3,153.00

SOUVENIRS OF PLACE AND LOVE

A collaboration between ICA and b-side, Souvenirs of Place saw local residents create special ceramic mementos to celebrate the Platinum Jubilee. Each ceramic celebrated a resident's special someone or something, from pets and people to memorabilia and other cherished items.

The final pieces were exhibited over two weekends, with each exhibit being complemented by a specially commissioned audio podcast featuring participant's personal stories about their chosen items. See Souvenirs of Place and Love highlights at: <https://youtu.be/htG0N02kPdc>



A selection of photos from the Souvenirs of Place and Love exhibition - September 2022



PORTLAND YOUTH COUNCIL

Working with PTC, ICA has led on the development of Portland's first Youth Council. In the first year, 10 young people aged 11-15 have been selected to represent young people across the Island, with a focus on five key areas: Activities and Opportunities, Improved Public Spaces, Portland's Environment, Equality and Diversity and Employment and Training

Portland's First Youth Council



- Make your C.V. stand out.
- No experience or knowledge of politics needed.
- Fun workshops to help you learn.
- Plan a project or event with others!
- Apply if you're aged 11-15 and live on Portland.



Deadline to apply is 30th of September 2022
Apply now by clicking the link in the bio or by visiting:
www.islandcommunityaction.org






Meet Portland's First Youth Council



PLATINUM JUBILEE



VOLUNTEER OF THE MONTH



Island Community Action - ICA

28 January 2022 · 🌐

VOLUNTEER OF THE MONTH - JANUARY 2022

This month's volunteer is the fabulous Su Illsley from [Fancys Farm, Portland](#).

Su was nominated several times for our Advent Angel project in December but unfortunately was not picked out of the hat, so we were especially delighted for her to win this month.

Su has worked tirelessly as a volunteer literally putting her blood, sweat and tears into building a community farm that the whole island can enjoy.

Well done Su from the whole team and thank you once again to the fabulous Lorna from [Pebbles Beach](#) for this beautiful donated bouquet 🌸



👍❤️ Vicky Short, Alison Wilcocks and 118 others · 13 comments · 8 shares



Island Community Action - ICA

29 October 2022 · 🌐

🌟 VOLUNTEER OF THE MONTH - OCTOBER 🌟

Well done to Josh (pictured middle) for winning our Volunteer of the Month award for October.

Josh is an inspiring young man who dedicates his time as a volunteer at [Castletown D-Day Centre](#). He goes out of his way to make visitors feel welcomed and informed and is always willing to help his team in whatever way he can.

Thank you, Josh, from everyone at Castletown D-Day Centre, Island Community Action and your local community.

To nominate a volunteer for an award give us a message, a call on 0130 823789 or email office@islandcommunityaction.org.uk



👍❤️ 47

5 comments · 2 shares

on: Re
nd, Don
org.uk

17

A LIFE IN PRINT

It was such a delight to witness the moment that Nab saw his life story 'From the Coalfields of Yorkshire to the Isle of Portland in Dorset,' printed as a hardback glossy book for the first time.

ICA volunteer Carol has been visiting Nab weekly for around 18 months, listening to his stories and using her years of writing experience to turn his memories into this wonderful book.

Katy Pascoe, ICA Project Manager says, "I'll admit to reading the first chapter and being absolutely transported to a different time in social history, with 'wash days' and 'butter weighed and wrapped in greaseproof paper!'

Nab was referred to ICA by [Weldmar Hospicecare](#) nurses who encouraged him to write down his recollections for his daughter and granddaughters. We're so glad they did.

Nab says, "I have absolutely loved doing this, it's one of the best things I've ever done and it wouldn't have been possible without Carol and your wonderful team. I've genuinely looked forward to every visit and to see the end result is incredible."

Thanks also to Damien from [Print Team - Dorset Ltd](#) for his help with the front and back covers and ensuring the finished product looked so professional.



CHRISTMAS



ADVENT ANGELS

Special treats for 24 local community champions, from those who've gone that extra mile to help another person or cause to those who've survived a challenging period in their life. Nominated for by the community.



Advent Angels – Day 19

🗨️ LEAVE A COMMENT © 19TH DECEMBER 2022 📍 ICAPORTLAND

Rachel Braund has been nominated to be an Island Community Action Advent Angel by her neighbour Ann B.

An amazing neighbor to her whole neighborhood and beyond, Rachel volunteers her time to deliver leftover food to people in need and help deliver food bank parcels to those who cannot get them themselves.

She is always checking in on members of her community and even volunteers her time down at Islanders with her son Mason.

Rachel goes the extra mile to ensure everyone has what they need despite not having it easy herself. We are amazed by her selfless dedication to her community.

Thank you, on behalf of your neighbours, everyone at ICA and your wider community.



ADVERTISING & PR

ICA has continued to benefit from promotion across a range of media platforms, including BBC Radio Solent, Wessex FM, 105 FM, the Dorset Echo, the Free Portland News, partner newsletters and social media. Here are a few examples...



DorsetECHO

News Sport Your Say What's On Announcements Delivery Town Map 2022 Hero Awards 2022 More

News Districts Features In The Dock Public Notices Picture Galleries UK News



Police Auctions

Access our full list of auctions to start bidding on cars, property and more

Police Auctions

Open

'Clean for the Queen' event coming to Portland

3rd May



By Sam McKeown
Reporter

@SamMcKReporter

Share f t in 0 Comments

AN EVENT is being held on Portland in preparation for next month's Platinum Jubilee celebration.

The public is being welcomed to join The Portland Pickers, a group of volunteers, on Saturday, May 21 to help with 'Clean for the Queen' in preparation for the celebrations.

The litter pick will start at 10am at the Island Community Action Office, in Easton Square, while the route planned will start in the area between Foundry Close and the back of New Street, leading To Grove playing fields and park.

Recommended by Outbrain



Sailing Photographer Elias Maria: It's our...

LEICA CAMERA - SL2...



Should I combine my pension plans? Gathered a few pensions over your...

Standard Life | Spo...



Lab Created Diamonds Are Making...

Engagement Ring D...



- 1 Paramedics abandon strike picket line to treat fallen biker
- 2 Double glazing firm to appoint liquidators after 'loss of skilled staff'
- 3 Elderly man 'struck over head with metal pole' in village assault
- 4 Agreed: Longer camping season at popular farm site signed off
- 5 Joy as bus operator steps in to offer service after 'lifeline' route is axed



- 6 Unwanted pet left on café doorstep
- 7 Will it be a White Christmas



Island Community Action

A LOCAL CHARITY FOR LOCAL PEOPLE

First Aid Training

LEAVE A COMMENT 6TH OCTOBER 2022 ICAPORTLAND

Great to see so many representatives from Portland's Voluntary and Community Sector groups at the two recent Essential First Aid courses we've organised locally.

Thanks to St John Ambulance - Portland Division for having us.



WORKING IN PARTNERSHIP

TABLE 3: COLLABORATIONS LISTS FOR YEAR 1 (2021-22) – TOTAL 70 ORGANISATIONS

PARTNER		NATURE OF PARTNERSHIP
1	Atlantic Academy	Consultations, events, Growing Local activities
1	b-side	Events and collaborative projects
1	Bournemouth University	Information sharing, joint funding bids,
2	CCG, NHS Foundation / Locality Team etc	ICA a lead partner on the Portland Hospital & Healthcare Development Group
2	Chemists, including Boots Easton and Fortuneswell	Prescriptions
2	Community hospitals e.g. Westhaven / Weymouth	Support referrals for hospital leavers
4	Domiciliary care providers	Cross-referrals
1	Dorset Blind Association	Transport for their trips
1	Dorset Citizen's Advice Bureau	Cross-referrals
1	Dorset Community Action	Advice, information sharing, events
2	Dorset Council – Adult Social Care & Children's Services	Advice, information sharing, cross-referrals
3	Dorset Council – Other	Funding, advice, information sharing, input into Dorset's evolving statutory offer
1	Dorset Fire & Rescue	Advice, information sharing. cross-referrals
1	Dorset Super League Darts	Transport for their trips
1	The Drop-In Youth Service	Shared staffing, collaborative events and activities
1	Eden Portland	Consultation, collaborative events and activities
1	EPIC Games Dorset	Collaborative events
1	Friends of Victoria Gardens	Collaborative events
1	Housing & Care 21 (Foylebank Court)	Lunch clubs, training kitchen
1	Island & Royal Manor of Portland Rotary	Funding, information sharing
1	Lantern Trust	Cross-referrals
1	Macpherson House	Transport for their trips
1	Nothe Fort	Collaborative events
1	Nottingham Trent University	Information sharing, joint projects, conference support
1	Opera Circus	Staff and resource sharing
1	Portland Carers Group	Advice, information sharing, cross-referrals
1	Portland Churches	Information sharing, cross-referrals
1	Portland Community Hospital	Service support, cross-referrals
1	Portland Community Partnership (PCP)	Advice, information sharing
1	Portland Connect / Tricuro	Cross-referrals
1	Portland Community Fridge	Information sharing
1	Portland Foodbank	Shared resources, cross-referrals
1	Portland Library	Information sharing
1	Portland Permaculture Group	Growing Local stakeholder
1	Portland Town Council	Portland Project co-funder, information and resource sharing, Growing Local stakeholder
1	Portland United Football Club (Youth)	Transport for their trips
1	Public Health Dorset	Growing Local stakeholder, ICA also member of the Dorset Health & Wellbeing Board
1	Rotary Club of Portland	Funding, event support and transport for their trips
1	Royal Manor Health Centre	Data sharing, cross-referrals, volunteer recruitment and Growing Local stakeholder
1	Southwell Area Living Together (S.A.L.T)	Event support and transport for their trips
1	Steps Youth Service	Information sharing, joint funding bids,
8	Venues	C2000, Easton Methodist Church, Lobster Pot, Royal Manor Health Centre, St. George's Centre, St. John's Hall, Wellworthys Sports & Social Club and YMCA
1	Volunteer Centre Dorset	Advice, information sharing, DBS checks, PR, general support (including VC Connect)
9	Voluntary Sector groups	Shared resources, volunteer recruitment / training, collaborative events
1	Wessex Orienteering	Collaborative walking / orienteering activities
1	Wyke Regis / Lanehouse Medical Practice	Data sharing, cross-referrals and volunteer recruitment

FINANCE

ISLAND COMMUNITY ACTION RECEIPTS AND PAYMENTS ACCOUNT FOR THE YEAR ENDED 31 MARCH 2022

	Note	Unrestricted Funds £	Restricted Funds £	Total Funds 2022 £	Total Funds 2021 £
Receipts					
Grants and donations	2	23,015	119,806	142,821	159,553
Sales		5,872	-	5,872	5,519
Fundraising and sponsorship		353	-	353	371
Motor vehicles/Minibus		12,163	-	12,163	4,626
Clubs and Memory Café		8,245	-	8,245	1,602
Memberships		45	-	45	-
Total receipts		49,693	119,806	169,499	171,671
Payments					
Man Shed purchases and consumables		1,986	-	1,986	158
Salaries and wages	3	61,594	24,022	85,616	88,652
Pension		3,809	-	3,809	4,015
Shop Purchases and Consumables		1,329	327	1,656	-
Rent		8,040	6,000	14,040	18,675
Rates, water and electric		2,121	-	2,121	2,153
Insurance		2,014	3,797	5,811	1,854
Telephone		140	-	140	90
Postage, stationery, printing and advertising		1,325	222	1,547	2,093
Photocopier Hire		3,260	-	3,260	1,517
Motor		3,818	2,354	6,172	8,573
Travel, accommodation and subsistence		-	304	304	-
Repairs and maintenance		1,148	584	1,732	1,260
Subscriptions and membership fees		961	448	1,409	856
Sundries		288	211	499	234
IT		186	1,010	1,196	1,513
Christmas box donations		131	-	131	823
Training, tutors and speakers		502	5,755	6,257	5,020
Fundraising		1,852	-	1,852	210
P.R. and marketing		499	239	738	360
Room hire		20	4,601	4,621	570
Accountancy fees		1,554	-	1,554	1,506
Catering Costs		-	956	956	-
Capital					
Computer equipment		2,474	-	2,474	3,118
Fixtures, fittings and equipment		240	1,670	1,910	-
Total payments		99,291	52,500	151,791	143,250
Net receipts before transfers		(49,598)	67,306	17,708	28,421
Transfers between funds		-	-	-	-
Net movement in funds at bank and in hand for the year		(49,598)	67,306	17,708	28,421
Bank and cash balances 31 March 2021		56,898	31,758	88,656	60,235
Bank and cash balances 31 March 2022		7,300	99,064	106,364	88,656

REFLECTIONS & THE FUTURE

2022 - what an incredible year of ups and downs! Epitomised by a single six month period in which we saw the UK transition from the highs of the Queen's Platinum Jubilee (through three prime ministers and a deepening financial catastrophe) to the profound sadness of her death and funeral.

The repercussions of these events were felt by most of us, whether as people or organisations. For ICA, we saw a growth in demand for our services, a reduction in levels of funding and a general change in our community's wellbeing and stress levels around the cost-of-living crisis.

At the same time, these challenges delivered opportunities, from growing our knowledge and experience to improving our adaptability and responsiveness. However, perhaps the biggest positive came with our increased understanding around the journey we must take as an organisation if we are to continue providing an offer that is intrinsically right for our community.

A key priority throughout this journey will be the need for increased collaboration. We have realised the benefits of this over past years but we also know we need to achieve even more because, no matter how talented or determined we are, no single person, organisation or sector has the reach, resources or expertise to overcome all of Portland's challenges.

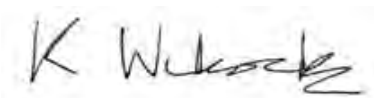
Together we become stronger, more adept and able to...

- Shout louder, get our voices heard and positively influence decision makers.
- Share best practice and resources – helping to maximise our impact, reduce duplication and spend and create a more resilient, responsive and sustainable way forward.
- Attract more local investment and funding
- Develop more cohesive, targeted and progressive services – ones that respond more effectively to life's 'whole journey,' from preventive to curative.
- Deliver the initiatives needed to enhance and maximise Portland's potential and, in turn, the positive outcomes and benefits afforded to its people, places and environment.

Regardless of challenge, we must also remember that a community cannot not be judged on statistics alone. Portland may have significant hurdles to overcome BUT it is also a place of castles and kings – a unique peninsula with 180 million years of history embedded within its stone. A place where past and present collide and environment, nature, heritage, culture and community thrive.

Perhaps, for us lucky 13,000+ residents, the significance of our Island is personified best by our late Queen – a woman who played out her 70 year reign against a theatrical backdrop of Portland Stone, from her Coronation in Westminster Abbey, through her Jubilee celebrations at St. Paul's Cathedral to her final journey past the Cenotaph to Wellington Arch.

With our community's feet firmly settled on that same stone, we surely have the strongest foundations on which to build. I, for one, can't wait to continue that journey with you all.



Kim Wilcocks, CEO – ICA

ISLAND COMMUNITY ACTION

The Easton Centre

Portland

Dorset

DT5 1EB

Tel: (01305) 823789

Email: office@islandcommunityaction.org.uk

Facebook: www.facebook.com/islandcommunityaction

Twitter: https://twitter.com/ICA_PortlandUK

Website: <https://islandcommunityaction.org>

Opening Hours (for calls and visits – outside of these times email or message)	
Monday	10.00 am – 2.00 pm
Tuesday	10.00 am – 2.00 pm
Wednesday	10.00 am – 2.00 pm
Thursday	10.00 am – 2.00 pm
Friday	10.00 am – 2.00 pm
Saturday	CLOSED
Sunday	CLOSED

Management Committee

Chair – Douglas Pigg

Secretary – Anita Busby-Wilcocks

Treasurer – Mervyn Burden

Trustee – Pauline Carlyle

Employees

CEO – Kim Wilcocks

Project Manager – Jackie Carpenter

Project Manager – Katy Pascoe

Project Coordinator – Georgina Bolt

All ICA staff are part-time.

ICA continues to work to a code of practice and ensure its Safeguarding and Equal Opportunities policies are adhered to at all times. ICA has full public and employer's liability insurance in place. A copy of these documents + our constitution and all other policies can be viewed at the ICA office.

ISLAND COMMUNITY ACTION

REPORT AND ACCOUNTS FOR THE YEAR ENDED 31 MARCH 2022

ALBERT GOODMAN

CHARTERED ACCOUNTANTS

**LEANNE HOUSE
6 AVON CLOSE
WEYMOUTH, DORSET
DT4 9UX**

ISLAND COMMUNITY ACTION

CONTENTS

Charity Information	1
Trustees' Report	2-4
Independent Examiner's Report	5
Receipts and Payments Account	6
Statement of Assets and Liabilities	7
Notes to the Accounts	8-9

ISLAND COMMUNITY ACTION

CHARITY INFORMATION

Board of Trustees

Chairman	Douglas Pigg
Treasurer	Mervyn Burden
Secretary	Anita Busby-Wilcocks
Trustee	Julia Willoughby

Charity Number

1157978

Charity Offices

The Easton Centre
Portland
DT5 1EB

Independent Examiner

Michelle Ferris FCA
Albert Goodman LLP
Chartered Accountants
Leanne House
6 Avon Close
Weymouth
Dorset
DT4 9UX

ISLAND COMMUNITY ACTION

TRUSTEES' REPORT FOR THE YEAR ENDED 31 MARCH 2022

The Trustees present their report and accounts for the year ended 31 March 2022.

Constitution, objects and policies

The charity was originally administered and managed by way of a Constitution which was first adopted on 23 June 1998. The original charity registered with the Charity Commission on 15 April 1999 under charity number 1075124. A new Charitable Incorporated Organisation was formed and registered with the Charity Commission on 24 July 2014. The new Charitable Incorporated Organisation took over the assets and activities of the original charity with that original charity becoming a linked charity of the new Charitable Incorporated Organisation. The report and accounts for the year include the assets and activities for both charities. The objects of both charities are similar and are to promote any charitable purposes for the benefit of the community of Portland by associating together volunteers and organisations in a common effort to advance education, protect health, relieve poverty, sickness and distress.

Committee and Management

Day to day management of the charity lies with the Chief Executive Officer (CEO) reporting to the Board of Trustees, which includes a Chair and a Treasurer. The Board of Trustees holds a minimum of four face-to-face meetings in each year and other ad-hoc digital / online meetings, as required.

Investment Powers

The Constitution authorises the committee to use all money raised to further its objects and for no other purpose.

Public benefit

The charity has the public benefit in focus in all of its activities and all of those activities are directed at improving the quality of life of the residents of Portland.

Objectives, activities and achievements

Island Community Action (ICA) is a small, Dorset based charity. Since 1999, we have been supporting local communities through projects that:

- Tackle deprivation.
- Improve psychological, physical and social wellbeing.
- Reduce the impact of isolation and / or loneliness.
- Support individuals to live happier and more independent lives for longer.
- Increase life chances and quality of life through 'hands on' experiences, learning and training.
- Support those wishing to volunteer or offer volunteering roles.
- Improves community cohesion
- Inspires and facilitates collaborative working and the sharing of best practice across sectors
- Enable, support and showcase local enterprises, initiatives and activities that improve infrastructure and the environment, and contribute to regeneration and sustainable development

Under ICA's new five-year initiative, The Portland Project, 11 workstreams are being developed and delivered to achieve our objectives:

1. **HELPING HANDS** – Supporting those aged 50 years plus (in particular those impacted by poor mental, physical and / or social wellbeing, including isolation and loneliness) and also those of any age impacted by disability and / or serious, life limiting or terminal illness. Achieved through a range of over 20 activities and services, including befriending, lunch clubs and transport.
2. **CHILDREN, YOUTH, FAMILIES** – Working in collaboration with other organisations, to support their work and develop other complementary activities, including a youth volunteering scheme, life and leadership skills training, consultation activities, events and a Portland Youth Council.

ISLAND COMMUNITY ACTION

TRUSTEES' REPORT FOR THE YEAR ENDED 31 MARCH 2022

3. CREATIVE (ALL AGES) – Includes:

- Community Crafters (crafting for community-based good causes). Aimed at reducing isolation and loneliness and strengthening community and intergenerational bonds.
- Creativity (activity boxes for 'mind and body' delivered to the housebound).

4. GROWING LOCAL – Helping make affordable, healthy and nutritious food more accessible, encouraging engagement with nature and the environment and increasing understanding around the links between climate change, the natural world and food.

Growing Local provides opportunities for residents to volunteer and participate in 'hands-on' activities that develop their skills and interest in growing and cooking and provides them with the confidence and knowledge to make healthier food choices, live more sustainably, adopt more eco-friendly lifestyles and feel more connected to their community and environment. Growing Local is open to all.

- 5. VOLUNTEER BUREAU** – Supporting those wishing to volunteer or offer volunteer roles, from recruitment to training and DBS checks.
- 6. COMMUNITY HUB** – Providing advice, information and signposting to local residents around a host of different subjects. ICA deals with around 7-8,000 queries a year.
- 7. COMMUNITY CONSULTATIONS** – ICA has three qualified Community Organisers who provide a range of community consultation services for ICA and other organisations.
- 8. COMMUNITY CONNECTORS** – Residents trained by ICA's Community Organiser team to identify and signpost those in potential need of support.
- 9. COMMUNITY FORUM** – A space for local organisations to network, coordinate support, forward plan and build capacity.
- 10. COMMUNITY INFRASTRUCTURE SUPPORT** – Providing advice, information and training for other local community-based organisations.
- 11. COLLABORATIONS** – ICA continues to work in partnership with a number of groups and support structures where required, including : The Portland Resilience Committee and Food Security Group and The Portland Hospital Development Group.

Risk management

The Trustees have examined the major strategic operational risks which the charity faces and confirm that systems have been established to highlight and lessen these risks.

Reserves policy

It is the policy of the charity to maintain sufficient unrestricted funds to meet approximately six months unrestricted expenditure and to assist with funding any future developments.

ISLAND COMMUNITY ACTION

TRUSTEES' REPORT FOR THE YEAR ENDED 31 MARCH 2022

Statement of Trustee's responsibilities

The trustees are responsible for preparing the Trustees' Report and the financial statements in accordance with applicable law and United Kingdom Accounting Standards relevant to smaller charities preparing their account on the receipts and payments basis.

The law applicable to charities in England & Wales requires the trustees to prepare financial statements for each financial year which give a true and fair view of the state of affairs of the charity and of the income and expenditure of the charity for that Year. In preparing these financial statements, the trustees are required to:

select suitable accounting policies and then apply them consistently;
make judgments and accounting estimates that are reasonable and prudent;
state whether applicable accounting standards have been followed, subject to any material departures disclosed and explained in the financial statements, and
prepare the financial statements on the going concern basis unless it is inappropriate to presume that the charity will continue in business.

The trustees are responsible for maintaining proper accounting records which disclose with reasonable accuracy at any time the financial position of the charity and enable them to ensure that the financial statements comply with the Charities Act 2011, the Charity (Accounts and Reports) Regulations 2008 and the provisions of the trust deed/constitution. They are also responsible for safeguarding the assets of the charity and hence for taking reasonable steps for the prevention and detection of fraud and other irregularities.

The trustees are responsible for the maintenance and integrity of the charity and financial information included on the charity's website. Legislation in the United Kingdom governing the preparation and dissemination of financial statements may differ from legislation in other jurisdictions.

Approval

This report was approved by the Trustees on 31 January 2023 and signed on their behalf by:

D Pigg (Trustee)

M Burden (Trustee)

ISLAND COMMUNITY ACTION

INDEPENDENT EXAMINER'S REPORT TO THE TRUSTEES OF ISLAND COMMUNITY ACTION

I report to the trustees on my examination of the accounts of Island Community Action ("the charity") for the year ended 31 March 2022.

Responsibilities and basis of report

As the charity trustees of the charity you are responsible for the preparation of the accounts in accordance with the requirements of the Charities Act 2011 ("the 2011 Act").

I report in respect of my examination of the charity's accounts carried out under section 145 of the 2011 Act and in carrying out my examination I have followed all the applicable Directions given by the Charity Commission under section 145(5)(b) of the 2011 Act.

Independent examiner's statement

I have completed my examination. I confirm that no material matters have come to my attention in connection with the examination giving me cause to believe that in any material respect:

1. accounting records were not kept in respect of the charity as required by section 130 of the 2011 Act; or
2. the accounts do not comply with these records

I have no concerns and have come across no other matters in connection with the examination to which attention should be drawn in this report in order to enable a proper understanding of the accounts to be reached.

Michelle Ferris BSc (Hons) FCA DChA
For and on behalf of

Albert Goodman LLP
Chartered Accountants

31 January 2023

Leanne House
6 Avon Close
Weymouth
Dorset
DT4 9UX

ISLAND COMMUNITY ACTION
RECEIPTS AND PAYMENTS ACCOUNT FOR THE YEAR ENDED 31 MARCH 2022

	Note	Unrestricted Funds	Restricted Funds	Total Funds 2022	Total Funds 2021
		£	£	£	£
Receipts					
Grants and donations	2	23,015	119,806	142,821	159,553
Sales		5,872	-	5,872	5,519
Fundraising and sponsorship		353	-	353	371
Motor vehicles/Minibus		12,163	-	12,163	4,626
Clubs and Memory Café		8,245	-	8,245	1,602
Memberships		45	-	45	-
Total receipts		49,693	119,806	169,499	171,671
Payments					
Man Shed purchases and consumables		1,986	-	1,986	158
Salaries and wages	3	61,594	24,022	85,616	88,652
Pension		3,809	-	3,809	4,015
Shop Purchases and Consumables		1,329	327	1,656	-
Rent		8,040	6,000	14,040	18,675
Rates, water and electric		2,121	-	2,121	2,153
Insurance		2,014	3,797	5,811	1,854
Telephone		140	-	140	90
Postage, stationery, printing and advertising		1,325	222	1,547	2,093
Photocopier Hire		3,260	-	3,260	1,517
Motor		3,818	2,354	6,172	8,573
Travel, accommodation and subsistence		-	304	304	-
Repairs and maintenance		1,148	584	1,732	1,260
Subscriptions and membership fees		961	448	1,409	856
Sundries		288	211	499	234
IT		186	1,010	1,196	1,513
Christmas box donations		131	-	131	823
Training, tutors and speakers		502	5,755	6,257	5,020
Fundraising		1,852	-	1,852	210
P.R. and marketing		499	239	738	360
Room hire		20	4,601	4,621	570
Accountancy fees		1,554	-	1,554	1,506
Catering Costs		-	956	956	-
Capital					
Computer equipment		2,474	-	2,474	3,118
Fixtures, fittings and equipment		240	1,670	1,910	-
Total payments		99,291	52,500	151,791	143,250
Net receipts before transfers		(49,598)	67,306	17,708	28,421
Transfers between funds		-	-	-	-
Net movement in funds at bank and in hand for the year		(49,598)	67,306	17,708	28,421
Bank and cash balances 31 March 2021		56,898	31,758	88,656	60,235
Bank and cash balances 31 March 2022		7,300	99,064	106,364	88,656

ISLAND COMMUNITY ACTION

STATEMENT OF ASSETS AND LIABILITIES AS AT 31 MARCH 2022

	Note	2022 £	2021 £
Current Assets			
Cash at bank and in hand			
Cash at Bank		105,572	88,656
Cash in hand		792	-
		<u>106,364</u>	<u>88,656</u>
Total bank and cash balances per receipts and payments account		<u>106,364</u>	<u>88,656</u>
Other Assets and Liabilities:			
Fixed Assets			
Motor vehicles and trailer		20,441	25,549
Fixtures, fittings and equipment		10,463	10,397
		<u>30,904</u>	<u>35,946</u>
Current Liabilities			
Creditors		<u>(1,731)</u>	<u>(3,337)</u>
Net Assets		<u>135,537</u>	<u>121,265</u>

The accounts were approved by the Trustees on 31 January 2023 and signed on their behalf by:

D Pigg (Trustee)

M Burden (Trustee)

ISLAND COMMUNITY ACTION

NOTES TO THE ACCOUNTS FOR THE YEAR ENDED 31 MARCH 2022

1. Accounting Policies

Basis of preparation of accounts

The accounts are prepared under the historical cost convention and include the results of the charity's operations which are described in the Committee's Report and all of which are continuing.

The accounts have been prepared in accordance with applicable accounting standards.

Amounts in the Receipts and Payments Account are included as amounts are received and paid by the charity. The Receipts and Payments Account does not therefore include any accruals or prepayments.

Value added tax

Value added tax is not recoverable by the charity, and as such is included in the relevant costs in the Receipts and Payments Account.

2. Grants and Donations

	£
Restricted funds	
Dorset Community Foundation	791
Dorset Council Culture and Community Project Fund award	2,160
Dorset Council Holiday Activities and Food (HAF) grant	1,792
National Lottery Community Fund	30,000
Dorset Council Holiday Activities and Food (HAF) grant	448
Hall and Woodhouse	1,000
Hall & Woodhouse L Comm Chest	500
Portland Town Council	15,000
Valentine Trust	10,000
COOP Community Fund	1,695
DYA	455
Po 95-99 Fortune	3,000
Atlantic Academy PTA	1,203
Nothe Fort	2,012
Alice Ellen Cooper Dean Charitable Foundation	10,000
National Lottery Community Fund RC	30,000
Dorset Community Foundation	9,750
	<hr/>
	119,806
Unrestricted	
Irenen Roig + Joan Turner Foundation	10,740
Nottingham Trent	455
Grants and donations	11,820
	<hr/>
	23,015
Total	<hr/> <hr/>
	142,821

ISLAND COMMUNITY ACTION

NOTES TO THE ACCOUNTS FOR THE YEAR ENDED 31 MARCH 2022

3. Staff Costs and Emoluments

	2022	2021
	£	£
Salaries and wages	79,328	81,980
Employers National Insurance Contributions	6,287	6,672
	<u>85,616</u>	<u>88,652</u>

No employee received emoluments of more than £60,000 per annum.

The average weekly number of employees during the year, calculated as full time equivalents, were as follows:

	2022	2021
	No.	No.
Charitable activities	4	4

4. Restricted Funds

The income funds of the charity include restricted funds comprising the following balances of grants and donations held on trust and to be applied for specific purposes. Please note the that information below

	Balance 1 April 2021	Income/ receipts	Payments	Transfers from/(to) General funds	Balance 31 March 2022
	£	£	£	£	£
Growing Local Project	13,877	4,234	(3,405)		14,706
Helping hands	-	14,707	(10,217)		4,490
Portland Project	-	95,250	(20,432)		74,818
Covid-19	12,446		(12,446)		-
Portland Shed	5,435	5,615	(6,000)		5,050
	<u>31,758</u>	<u>119,806</u>	<u>(52,500)</u>	<u>-</u>	<u>99,064</u>

5. Growing Local Project received funding from the Dorset Community Foundation, Dorset Council Holiday Activities and Food..

Helping Hands received funding from Valentine Charitable Trust, COOP Community Fund, Hall & Woodhouse

Portland Project received funding from National Lottery, Portland Town Council, Alice Ellen Cooper Dean Charitable Foundation, Dorset Community Foundation, Dorset Youth Association.

The Portland Shed received funding from the COOP Community Fund, Hall & Woodhouse Community Chest, Dorset Council Culture and Community Project Fund.

ISLAND COMMUNITY ACTION
The Easton Centre
Portland
Dorset
DT5 1EB

Albert Goodman LLP
Leanne House
6 Avon Close
Weymouth
Dorset
DT4 9UX

Dear Sirs

This representation letter is provided in connection with your review of the financial statements of the charity for the year ending 31 March 2022, for the purpose of providing an Independent Examiners report on the financial statements.

1. We acknowledge, as trustees, our responsibility under the Charities Act 2011 for preparing financial statements.
2. We confirm that all accounting records have been made available to you for the purposes of your review, in accordance with your terms of engagement, and that all transactions undertaken by the charity have been properly reflected and recorded in the accounting records.
3. We confirm that there have been no events since the balance sheet date which require disclosure or which would materially affect the amounts in the financial statements, other than those already disclosed or included in the financial statements.
4. We confirm that we are not aware of any possible or actual instance of non compliance with those laws and regulations which provide a legal framework within which the charity conducts its business. The charity has complied with all aspects of contractual agreements that could have a material effect on the financial statements in the event of non compliance. We have made available to you all correspondence with regulators, including any serious incident reports. The relevant laws and regulations are:
 - Charities Act 2011
 - Charities (Accounts and Reports) Regulations 2008
5. We confirm that all grants, donations and other income, including those subject to special terms or conditions or received for restricted purposes, have been notified to you. There have been no such breaches of terms or conditions during the period regarding the application of such income.
6. We confirm that appropriate controls are in place to ensure that all payments (including those made overseas) are applied for charitable purposes.
7. We confirm that there have been no actual or suspected instances of fraud involving management or employees who have a significant role in internal control that could have a material effect on the financial statements, except as already disclosed to you. We also confirm that we are not aware of any allegations of fraud by former employees, regulators or others, except as already disclosed to you.
8. We confirm that we consider that the charity has sufficient unrestricted funds to enable liabilities to be met as they fall due.
9. We confirm that we are not aware of any matters of material significance that should be reported to the Charity Commission.

10. We confirm that the use of the designated and restricted funds is correct as disclosed in the accounts.
11. We confirm that the allocation of income and expenditure is reasonable and in line with our understanding of the charity.
12. We confirm that the National Lottery Covid-19 Grant is restricted income and should be allocated against extra costs associated with Covid-19 support and to cover the running costs of the charity while the covid crisis is ongoing and help cover the shortfall of income.

We confirm to the best of our knowledge and belief that the above representations are made on the basis of enquiries of management and staff with relevant knowledge and experience and, where appropriate, of inspection of supporting documentation sufficient to satisfy ourselves that we can properly make each of the above representations to you.

Yours faithfully

.....
Trustee

.....
Trustee

Signed on behalf of the Board of Trustees

Date: