

Trustees Report & Unaudited Financial Statements

Loughborough Gospel Hall Trust
For the year ended 5 April 2022

Contents

3	Legal and Administrative Information
4	Report of the Trustees
8	Report of the Independent Examiner
9	Statement of Financial Activities
10	Balance Sheet
11	Notes forming part of the Financial Statements
14	Resources Expended
15	Analysis of Net Assets - Current year
16	Analysis of Net Assets - Prior Year
17	Movement in Funds - Current Year
18	Movement in Funds - Prior Year
19	Comparative Statement of Financial Activities

Legal and Administrative Information

Loughborough Gospel Hall Trust For the year ended 5 April 2022

Charity Name:

Loughborough Gospel Hall Trust

Registered Charity Number:

1157882

Trustees:

Mr M Wheatcroft (Chair)

Mr A Bedford

Mr G Lowe

Mr D Bedford

Mr D Wheatcroft

Treasurer:

Mr M Wheatcroft

Principle Address:

99 Cotes Road
Barrow Upon Soar
Loughborough
LE12 8JP

Independent Examiner:

Kerry Taylor
Oldfield Advisory LLP
Santis House
Curriers Close
Coventry
CV48 8AW

Accountant:

Oldfield Advisory LLP
Santis House
Curriers Close
Coventry
CV4 8AW

Bankers:

National Westminster Bank Plc
Market Place
Loughborough
LE11 3NZ

Report of the Trustees

Loughborough Gospel Hall Trust For the year ended 5 April 2022

The trustees present their report along with the financial statements of the Charity for the year ended 5 April 2022. The financial statements have been prepared in accordance with the accounting policies set out on page 10 and comply with the Trust Deed and applicable law.

Structure, Governance and Management

Governing Document

The Charity is an unincorporated trust constituted by a Deed of Trust dated 5th October 1992, most recently amended by Deed of Variation dated 28th February 2014. The trust was registered with the Charity Commission for England and Wales on 16th July 2014 under Charity Registration Number: 1157882

Recruitment and appointment of new Trustees

The Trustees who have served during the year and since the year end are set out on page 2. None of the Trustees, nor any person connected with them, received any remuneration or expenses from the Charity in the year ended 5 April 2022.

The Trust operates two Gospel halls and Trustees are chosen from among the regular congregation of the halls. New Trustees are nominated by the existing Trustees or by the congregation and must be appointed by unanimous resolution of the congregation. They are selected according to their skills and experience and are expected to use both in furthering the objects of the Charity. Checks are made to ensure the Trustees' eligibility to act and incoming Trustees are made aware of their responsibilities by the existing Trustees, who ensure that new Trustees read the Trust Deed and relevant Charity Commission guidance.

Wider Network

The Trustees maintain informal links with Trustees of similar Trusts with a view to pooling experience considered useful in pursuing the objects of the Trust.

Risk Management

The Trustees have identified and reviewed the major risks to which the charity is exposed and confirm that they have established systems to manage and mitigate those risks.

Objectives and Activities

Objectives and Aims

The charitable purposes of the Charity are the advancement of the Christian religion for the public benefit, including by the carrying on of the service of God in accordance with the Old and New Testaments of the Holy Bible as followed by those Christians forming part of the world-wide fellowship known as the Plymouth Brethren Christian Church (the "Brethren") and any other charitable purposes connected with Brethren. The core doctrine of the Brethren and proper practices in furtherance of certain aspects of doctrine are summarised in two schedules to the Trust Deed.

Public Benefit

The Trustees confirm that they have complied with their duty under section 4 of the Charities Act 2011 to have due regard to the Charity Commission's general guidance to charities on public benefit.

Details of public benefit activities carried out by Loughborough Gospel Hall Trust can be found in the separate appendix to this report.

Main activities and achievements

The Trust provides and maintains two Gospel halls where religious meetings are held by the local Brethren community. Details of the origins, teachings and way of life of the Brethren can be found on the website - www.plymouthbrethrenchristianchurch.org and in the schedules to the Trust Deed.

The trustees have also operated an Emergency Needs fund for the duration of the coronavirus pandemic and any resultant economic downturn. This is providing limited financial assistance by the way of grocery vouchers to households, who have experienced a recent and significant decrease in income due to the pandemic, such that it is likely to impact on the health and/or welfare of members of the household. The trust has appointed a Local Welfare Panel to manage the application process and to administer the vouchers to qualifying applicants.

Plans for future periods

With the commencement of lockdown restrictions in the UK the trust ceased using the gospel halls it operates. During the financial year, restrictions were eased sufficiently to allow the congregation to use the gospel halls for the Lord's Supper (Communion). The use of the rooms was conducted in a manner which always complied with the government guidance, and the trust intends to continue using the rooms when it is safe to do so. The trustees do not consider that the Covid-19 pandemic will have any effect on the ability of the trust to continue as a going concern.

On the 2nd September 2022, after the year end the trust completed the purchase of a former Methodist Chapel for use as a local room.

Meetings

Meetings held at the Gospel halls include the Lord's Supper (Communion), Gospel preachings, Bible readings and Bible addresses. There is a structured weekly schedule of meetings and, depending on the particular meeting, between 25 and 550 people normally attend these occasions.

The meetings are attended by the regular congregation and most are open to other properly disposed visitors. The notice board outside the Hall welcomes visitors and displays the times of Gospel preachings, along with a telephone number for those seeking further information or help. Gospel tracts, which are distributed by street preachers, also display this information.

Bibles and an extensive range of other Christian reading material are on display at the halls and visitors are free to help themselves.

Spreading the Gospel message and the life of a Christian

The Gospel halls are a base from which the regular congregation and others who attend the meetings are encouraged to spread the Christian Gospel, in word and deed.

Members of the congregation would usually participate in a programme of street preaching where Gospel tracts are provided free of charge by the Charity to such preachers to be handed out to interested members of the public. Due to the Covid-19 pandemic this has not been possible during the financial year, but the congregation aim to continue this once it is safe to do so.

In carrying out this work, the congregation considers itself to be living out its faith in practice, as particularly exemplified in the following extract from the schedule to the Trust Deed on living a Christian life:

- We seek and are encouraged to live exemplary lives in all our relationships with others in the wider community (including former Brethren), in accordance with the teachings of Holy Scripture (1 Tim 2:2).
- We regularly go out from our homes to preach on the streets, to distribute Christian literature and engage with the wider community (including former Brethren) in order to present eternal salvation, available to all men by faith in Jesus Christ. (2 Tim 4:2).
- We seek as members of the public to lead Christian lives as husbands and wives, parents, children, employers, employees and neighbours. (Col 3:22-25, Col 4:1).
- The preservation and protection of the family unit is fundamental and children are prized as a blessing from God. (Psalm 127:3-5). The elderly are valued members of the community, for whom both their family and the wider community are expected to care.
- Holy Scripture commands us to be good neighbours to others, and deal with all other people (including former Brethren) openly, honestly and fairly and consistent with these principles, we should give our time, talents and money to assist those in need in the wider community, in so far as reasonable given our abilities and our available resources. (Matt 7:12, Matt 22:39, Eph 4:28).

Funding

Funding is sought through gifts from the congregation and Gift Aid is claimed on eligible donations. Funding is sometimes received from other charitable trusts with complementary objectives.

Financial Review

In the year ended 5 April 2022 the Trust had a deficit of incoming resources over resources expended. This is mostly due to non-monetary items such as depreciation.

Total voluntary income received this year was £32,545 compared to £46,467 in the previous year.

All funds received were unrestricted funds. The balance of unrestricted funds was £1,246,346 and the balance of restricted funds at the year end was £26,614.

The designated fund for the congregation support also showed a modest deficit at the financial year end. The trustees were aware of this deficit, with the shortfall being covered by funds received in September 2022

Reserves Policy

The Trustees have considered the level of reserves they wish to retain, appropriate to the charity's needs, based on its size and the level of its financial commitments. The Trust has no employees and its regular outgoings are minimal. Accordingly, the Trustees have decided to adopt a policy of maintaining enough reserves to cover day to day expenditure and any urgent needs that may arise. The congregation is kept regularly informed as to particular needs for funds, and other relevant matters and the Trustees aim to ensure that the Charity will be able to continue to fulfil its charitable objectives even if there is a temporary shortfall in income or unexpected expenditure, by raising a funds appeal to the congregation.

Free Reserves at the year end were £282,083 (2021: £280,884)

Statement of Trustees Responsibilities

The trustees are responsible for preparing the Report of the Trustees and the financial statements in accordance with applicable law and United Kingdom Accounting Standards (United Kingdom Generally Accepted Accounting Practice).

The law applicable to charities in England and Wales, the Charities Act 2011, Charity (Accounts and Reports) Regulations and the provisions of the Trust Deed require the Trustees to prepare financial statements for each financial year which give a true and fair view of the state of affairs of the Charity and of the incoming resources and application of resources, including the income and expenditure, of the Charity for that period. In preparing those financial statements, the Trustees are required to:

- select suitable accounting policies and then apply them consistently;
- observe the methods and principles in the Charity SORP (FRS 102);
- make judgements and estimates that are reasonable and prudent;
- state whether applicable accounting standards have been followed, subject to any material departures disclosed and explained in the financial statements;
- prepare the financial statements on the going concern basis unless it is inappropriate to presume that the charity will continue in operation.

The trustees are responsible for keeping proper accounting records which disclose with reasonable accuracy at any time the financial position of the charity and to enable them to ensure that the financial statements comply with the Charities Act 2011, the Charity (Accounts and Reports) Regulations and the provisions of the Trust Deed. They are also responsible for safeguarding the assets of the charity and hence for taking reasonable steps for the prevention and detection of fraud and other irregularities. All transactions have been reviewed and approved by two trustees.

On Behalf of the board:

.....

Mr M Wheatcroft (Trustee)

.....

Date

Report of the Independent Examiner

Loughborough Gospel Hall Trust For the year ended 5 April 2022

I report to the trustees on my examination of the accounts of the Loughborough Gospel Hall Trust for the year ended 5 April 2022.

Respective responsibilities of Trustees and Examiner

The charity's trustees are responsible for the preparation of the accounts in accordance with the requirements of the Charities Act 2011 ('the Act').

I report in respect of my examination of the Trust's accounts carried out under section 145 of the 2011 Act and in carrying out my examination I have followed all the applicable Directions given by the Charity Commission under section 145(5)(b) of the Act.

Basis of Independent Examiner's Report

My examination was carried out in accordance with the General Directions given by the Charity Commission. An examination includes a review of the accounting records kept by the charity and a comparison of the accounts presented with those records. It also includes consideration of any unusual items or disclosures in the accounts, and seeking of explanations from you as Trustees concerning any such matters. The procedures undertaken do not provide all the evidence that would be required in an audit, and consequently no opinion is given as to whether the accounts present a 'true and fair view' and the report is limited to those matters set out in the statements below.

Independent Examiner's Statement

I have completed my examination. I confirm that no material matters have come to my attention in connection with the examination giving me cause to believe that in any material respect:

1. Accounting records were not kept in respect of the Trust as required by section 130 of the Act; or
2. The accounts do not accord with those records; or
3. The accounts do not comply with the applicable requirements concerning the form and content of accounts set out in the Charities (Accounts and Reports) Regulations 2008 other than any requirement that the accounts give a 'true and fair view' which is not a matter considered as part of an independent examination.

I have no concerns and have come across no other matters in connection with the examination to which attention should be drawn in this report in order to enable a proper understanding of the accounts to be reached.

.....
Kerry Taylor
Oldfield Advisory LLP
Santis House
Curriers Close
Coventry
CV48 8AW

20 December 2022

Statement of Financial Activities

Loughborough Gospel Hall Trust

For the year ended 5 April 2022

	UNRESTRICTED FUNDS	DESIGNATED FUNDS	RESTRICTED FUNDS	TOTAL FUNDS 2022	TOTAL FUNDS 2021
Income and endowments:					
Donations and Legacies:					
Contributions from the Congregation	10,896	-	-	10,896	9,217
Gift Aid Donations	2,179	-	-	2,179	3,780
Income Tax refunds	545	-	-	545	945
Non Gift Aid Donations	10,751	-	-	10,751	20,000
Congregation Support	-	8,175	-	8,175	12,525
Total Income and endowments:	24,370	8,175	-	32,545	46,467
Expenditure:					
Running Meeting Rooms (note 9)	47,741	-	-	47,741	49,958
Congregation Support (note 9)	-	7,950	-	7,950	12,825
Other Charitable Activities	593	-	-	593	478
Total Expenditure:	48,334	7,950	-	56,284	63,262
Net Income/(Expenditure)	(23,963)	225	-	(23,738)	(16,795)
Net Movement In Funds	(23,963)	225	-	(23,738)	(16,795)
	UNRESTRICTED FUNDS	DESIGNATED FUNDS	RESTRICTED FUNDS	TOTAL FUNDS 2022	TOTAL FUNDS 2021
Reconciliation of funds (note 11)					
Total Funds brought forward	1,270,385	(300)	26,614	1,296,699	1,313,493
Net movement in funds	(23,963)	225	-	(23,738)	(16,795)
Total Funds carried forward	1,246,421	(75)	26,614	1,272,960	1,296,699

The notes on page 11 - 18 form part of these financial statements.

Balance Sheet

Loughborough Gospel Hall Trust As at 5 April 2022

	2022	2021
Fixed Assets		
Tangible assets (note 6)	964,263	989,200
Total Fixed Assets	964,263	989,200
Current assets		
Prepayments and accrued income	1,965	2,010
Cash at bank and in hand	309,197	306,778
Total Current assets	311,162	308,788
Creditors: amounts falling due within one year		
Accruals and deferred income	2,465	1,289
Total Creditors: amounts falling due within one year	2,465	1,289
Net current assets/(liabilities)	308,697	307,498
Total assets less current liabilities	1,272,960	1,296,699
Net Assets	1,272,960	1,296,699
Funds (note 10)		
Restricted Funds	26,614	26,614
Unrestricted funds	1,246,346	1,270,085
Total Funds	1,272,960	1,296,699

The unaudited financial statements were approved and authorised for issue by the Trustees of Loughborough Gospel Hall Trust onand were signed on its behalf by:

.....

Mr M Wheatcroft (Trustee)

Notes forming part of the Financial Statements

Loughborough Gospel Hall Trust For the year ended 5 April 2022

1. ACCOUNTING POLICIES

1.1 Basis of financial statements

The financial statements have been prepared in accordance with the Statement of Recommended Practice: Accounting and Reporting by Charities preparing their accounts in accordance with the Financial Reporting Standard applicable in the UK and Republic of Ireland (FRS 102) issued on 16 July 2014, and incorporating update bulletins 1 and 2, and the Financial Reporting Standard applicable in the United Kingdom and Republic of Ireland (FRS 102) and UK Generally Accepted Accounting Practice.

The functional currency of the charity is sterling (£).

The Trust meets the definition of a public benefit entity under FRS 102. Assets and liabilities are initially recognised at historical cost or transaction value unless otherwise stated in the relevant accounting policy note(s).

1.2 Income

Donations are recognised in the year in which there is entitlement and probability of receipt and the amount can be measured with reasonable certainty. Income is only deferred when the charity has to fulfil conditions before becoming entitled to it or where the donor has specified that the income is to be expended in a future year. Gift aid is added to the value of the donation to which it relates.

Donated services are recognised as income and expenditure in the financial statements when organisations or individuals offer their services and support pro bono. The value of these donated services to Loughborough Gospel Hall Trust is considered to be equal to market value which would be paid were the service formally procured. This includes services paid for by other trusts.

Investment income is accounted for on a receivable basis.

1.3 Expenditure

Expenditure is included on an accruals basis. Liabilities are recognised as soon as there is a legal or constructive obligation committing the charity to pay out resources.

Charitable activities comprise those costs directly attributable to the fulfilment of the charitable objects.

1.4 Governance and support costs

Support costs have been allocated between governance costs and other support costs. Governance costs comprise all costs involving the public accountability of the charity and costs related to statutory requirements. Governance and support costs are allocated to charitable activities on the basis of capacity used.

1.5 Tangible fixed assets and depreciation

Tangible fixed assets (costing more than £100) are stated at cost less depreciation. Freehold land is not depreciated. Depreciation is provided at rates calculated to write off the cost, less estimated residual value, of each asset over its expected useful life as follows:

Freehold buildings	2.5% straight line
Property improvements	3% straight line
Fixtures and Fittings	10% reducing balance

1.6 Taxation

The Trust is a registered charity and is not liable to United Kingdom income or corporation tax on charitable activities, provided income falls within the charitable exemptions and is spent on charitable purposes.

1.7 Funds

The general unrestricted fund is free for the Trustees to use for any purposes in furtherance of the trust's charitable objects.

Restricted funds arise from donations to the trust, which are made for a specific purpose. Restricted funds can only be used for the purpose for which funds were given.

1.8 Preparation of consolidated financial statements

The Charity does not have a trading subsidiary.

1.9 Going Concern

The Trustees consider that there are no material uncertainties about the charity's ability to continue as a going concern.

1.10 Significant estimates and judgements

The trustees do not consider that there are any sources of estimation uncertainty at the reporting date that have a significant risk of causing a material adjustment to the carrying amounts of assets and liabilities within the next reporting period.

The trustees do not consider that the Covid-19 pandemic will have any effect on the ability of the trust to continue as a going concern.

2. TRUSTEES' REMUNERATION AND EXPENSES

No Trustees received any remuneration or other benefits from an employment with the charity and no trustees were reimbursed for expenses during the year. (2021: none)

3. WAGES AND SALARIES

There are no employees (2021: none)

4. Donated Services

2022

2021

Donated Services

5. Grants

2022

2021

Grants:

6. Tangible Fixed Assets

Cost	Freehold Land and Buildings - Herrick Road	Freehold Land and Buildings - Osgathorpe	Fixtures, Fittings and Equipment	Totals
At 6 April 2021	78,859	1,130,192	17,516	1,226,567
Additions	-	-	-	-
Disposals	-	-	-	-
At 5 April 2022	78,859	1,130,192	17,516	1,226,567
Depreciation				
At 6 April 2021	26,841	200,886	9,640	237,367
Current Year Depreciation	1,770	22,379	788	24,937
Eliminated on disposals	-	-	-	-
At 5 April 2022	28,611	223,265	10,428	262,304
Net Book Value				
At 5 April 2022	50,248	906,927	7,089	964,263
At 5 April 2021	52,018	929,306	7,876	989,200

Land registry titles of the above property held are LT78043, LT162748, and LT110071.

7. TRANSACTIONS WITH RELATED PARTIES

During the financial year, aggregated donations of £18,926 (2021: £23,334) were received. The trust made reimbursements to Allan Bedford, a trustee, totalling £8,306 for the purchase of gift cards and trust expenses. Payments totalling £178 for maintenance work carried out during the period were made to Avansys LLP, a company in which Michael Wheatcroft and Daniel Wheatcroft are members.

8. VOLUNTEERS

Loughborough Gospel Hall Trust relies entirely on volunteers to carry out the management, administration and general maintenance work. The Trust has no paid staff or paid Trustees.

Resources Expended

Loughborough Gospel Hall Trust For the year ended 5 April 2022

9. Resources Expended

	MEETING ROOMS	OTHER CHARITABLE ACTIVITIES	TOTAL COSTS 2022	TOTAL COSTS 2021
Direct Costs				
Premises costs - repairs and maintenance	3,055	-	3,055	4,973
Premises costs - heat, light and power	5,384	-	5,384	8,255
Premises costs - rent and rates	6,599	-	6,599	6,127
Telephone	615	-	615	515
Legal and professional	4,535	-	4,535	2,780
Congregation Support	-	7,950	7,950	12,825
Other Charitable Donations	-	593	593	478
Depreciation	24,937	-	24,937	25,024
Insurance	1,670	-	1,670	1,338
Governance	946	-	946	946
Total Direct Costs	47,741	8,543	56,284	63,262

Governance costs include £180 (prior year: £180) in respect of independent examiners fees.

Analysis of Net Assets - Current year

Loughborough Gospel Hall Trust For the year ended 5 April 2022

10. ANALYSIS OF NET ASSETS BETWEEN FUNDS

10.1 Current Year

	UNRESTRICTED FUNDS	DESIGNATED FUNDS	RESTRICTED FUNDS	TOTAL FUNDS 2022
Funds				
Tangible Fixed Assets	964,263	-	-	964,263
Current Assets	284,623	(75)	26,614	311,162
Current Liabilities	(2,465)	-	-	(2,465)
Total Funds	1,246,421	(75)	26,614	1,272,960

Analysis of Net Assets - Prior Year

Loughborough Gospel Hall Trust For the year ended 5 April 2022

10.2 Prior Year

	UNRESTRICTED FUNDS	DESIGNATED FUNDS	RESTRICTED FUNDS	TOTAL FUNDS 2021
Funds				
Tangible Fixed Assets	989,200	-	-	989,200
Current Assets	282,474	(300)	26,614	308,788
Current Liabilities	(1,289)	-	-	(1,289)
Total Funds	1,270,385	(300)	26,614	1,296,699

Movement in Funds - Current Year

Loughborough Gospel Hall Trust For the year ended 5 April 2022

11. Movement in Funds

11.1 Movement in funds - current year

	UNRESTRICTED FUNDS	DESIGNATED FUNDS	RESTRICTED FUNDS	TOTAL FUNDS 2022
Movement in Funds				
Total funds brought forward	1,270,385	(300)	26,614	1,296,699
Incoming resources	24,370	8,175	-	32,545
Resources expended	(48,334)	(7,950)	-	(56,284)
Total funds carried forward	1,246,421	(75)	26,614	1,272,960

Movement in Funds - Prior Year

Loughborough Gospel Hall Trust For the year ended 5 April 2022

11. Movement in Funds

11.2 Movement in funds - Prior year

	UNRESTRICTED FUNDS	DESIGNATED FUNDS	RESTRICTED FUNDS	TOTAL FUNDS 2021
Movement in Funds				
Total funds brought forward	1,286,879	-	26,614	1,313,493
Incoming resources	33,942	12,525	-	46,467
Resources expended	(50,437)	(12,825)	-	(63,262)
Total funds carried forward	1,270,385	(300)	26,614	1,296,699

Comparative Statement of Financial Activities

Loughborough Gospel Hall Trust For the year ended 5 April 2022

	UNRESTRICTED FUNDS	DESIGNATED FUNDS	RESTRICTED FUNDS	TOTAL FUNDS 2021
Income and endowments:				
Donations and Legacies:				
Contributions from the Congregation	9,217	-	-	9,217
Gift Aid Donations	3,780	-	-	3,780
Income Tax refunds	945	-	-	945
Non Gift Aid Donations	20,000	-	-	20,000
Congregation Support	-	12,525	-	12,525
Total Income and endowments:	33,942	12,525	-	46,467
Expenditure:				
Running Meeting Rooms (note 9)	49,958	-	-	49,958
Congregation Support (note 9)	-	12,825	-	12,825
Other Charitable Activities	478	-	-	478
Total Expenditure:	50,437	12,825	-	63,262
Net Income/(Expenditure)	(16,495)	(300)	-	(16,795)
Net Movement In Funds	(16,495)	(300)	-	(16,795)
	UNRESTRICTED FUNDS	DESIGNATED FUNDS	RESTRICTED FUNDS	TOTAL FUNDS 2021
Reconciliation of funds (note 11)				
Total Funds brought forward	1,286,879	-	26,614	1,313,493
Net movement in funds	(16,495)	(300)	-	(16,795)
Total Funds carried forward	1,270,385	(300)	26,614	1,296,699

LGHT Public Benefit Report



One of the Trust's principal activities that furthers its objects is providing a facility for the coordination of "outreach" work into the wider community.

Members of the congregation, acting under the directions of the trustees and with their full active encouragement, have continued with "outreach" work which they have carried out for many years.

2021-22 Summary

The trustees of the Loughborough Gospel Hall Trust confirm that they have complied with their duty under section 4 of the Charities Act 2011 to have due regard to the Charity Commission's general guidance to charities on public benefit.

Despite the unique challenges of we have been faced with as a result of the COVID 19 pandemic, the trustees and the regular congregation members were determined to continue their public benefit works and we have found this year has demanded even more resource as we support people and communities around our places of worship.



Street Preaching & Tract Distribution

We were unable to maintain our long-standing committal to the street preaching and distribution of tracts in the town centre of Loughborough due to the Covid Pandemic but have resumed this now the lockdown restrictions have lifted. Around 10 community members regularly preach. Around 500 street preachings were preached throughout the year, spreading the hope of the gospel message.

A supply of gospel tracts, literature and Bibles is maintained by the Trust in the foyer of the main Gospel Hall and this is advertised by the Sign Board at the main entrance. These are available to the general public free of charge.

Any enquiries received by the trustees or made to the central office have been followed up fully, and where applicable people have been directed to the following website where literature can be purchased or downloaded for reading in multiple languages.

<https://christiandoctrineandgospelpublishing.org/>



Members of the congregation have continued to hand out tracts to neighbours and people in need when they have met them. Other church leaders and ministers from time to time request some of the early printed ministry by the leaders which is made available from the website listed above.

Working with other charities

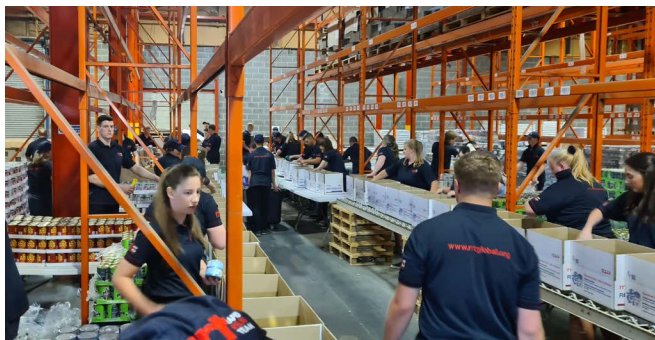
LGHT has supported the work of a separate charity, the Rapid Relief Team, whose main focus during the last 12 months has been on a national food box campaign, and over the past few months, food boxes providing vital support for Ukrainian refugees.

The RRT Food Boxes are designed to feed a family of 4 for up to 4 days and bring some relief and joy to households during their time of pressure and crisis. The local RRT team has donated food boxes, Early Bird learning kits, and energy snack bars to St. Botolph's Primary School in Shepshed.

Loughborough volunteers were part of teams who assembled thousands of food boxes over several events for the RRT Operation 322 Ukraine Refugee Appeal.

Our local RRT volunteers provided a hot BBQ lunch for the Steps Conductive Education Centre in Shepshed at the annual Christmas event for parents and carers.

Many members of the congregation are regular donors to the RRT, especially business owners.



15 Charities supported

The trust has also supported the following charities with donations of food and hygiene products and cash donations to support and further their worthy causes; Ashby Food Bank, Beacon Christian Fellowship, Coalville Food Bank, Carpenters Arms, John Storer House, Exaireo Trust, Shepshed Food Bank, Loughborough Area Foodbank, Rainbows Hospice for Children and Young People, Salvation Army, Project 5000, Passion Youth Centre, Rapid Relief Team, The Falcon Centre, and PACE.

Further plans for 2022-23

The trust is committed to the ongoing support of other charities and always welcomes fresh opportunities to support causes that align with our Christian values, showing love, compassion and care towards those who need it most.

Document Activity Report

Document Sent Tue, 20 Dec 2022 10:27:16 GMT

Document Approval Status Approved

Approval Activity Summary

Michael Wheatcroft Approved Tue, 20 Dec 2022 21:36:36 GMT

Document Activity History

Document history shows most recent activity first

Date	Activity
Tue, 20 Dec 2022 21:35:59 GMT	Michael Wheatcroft viewed the document
Tue, 20 Dec 2022 21:35:55 GMT	Michael Wheatcroft viewed the document
Tue, 20 Dec 2022 21:34:52 GMT	Michael Wheatcroft viewed the document

You can verify that this is a genuine Portal document by uploading it to the following secure web page:

<http://oldfieldadvisory.accountantspace.co.uk/messages/VerifyDocument>