



# Annual Report 2023

**MAKE  
CHANGE**

# Strategic Report

## Our impact:

Our first objective in this period was:

*To reduce poverty through outreach, education, and entrepreneurship.*

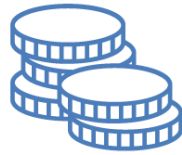
In another difficult year for people in remote area across Cameroon, the cost-of-living crisis left many struggling to afford the basics.

Foundation MEM played a key role in supporting those most in need at this time.

- **Partnering with rural communities to achieve their local developments goals**



19 Farmers'  
Cooperatives



Small  
Grants/Sponsorship



5000+ Students



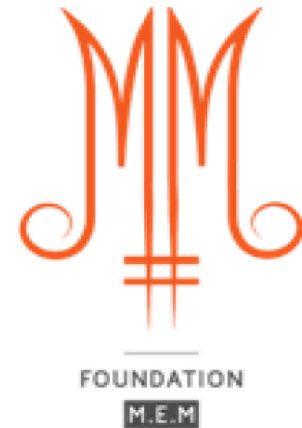
Skeleton Team



10,000+  
Water Users



Partnership-based  
implementation  
model



## What did we do:

# FMEM SCHOLARSHIP



**28**

Number of recipients

Over 3 years



**EUR7,285**

Cost per recipient

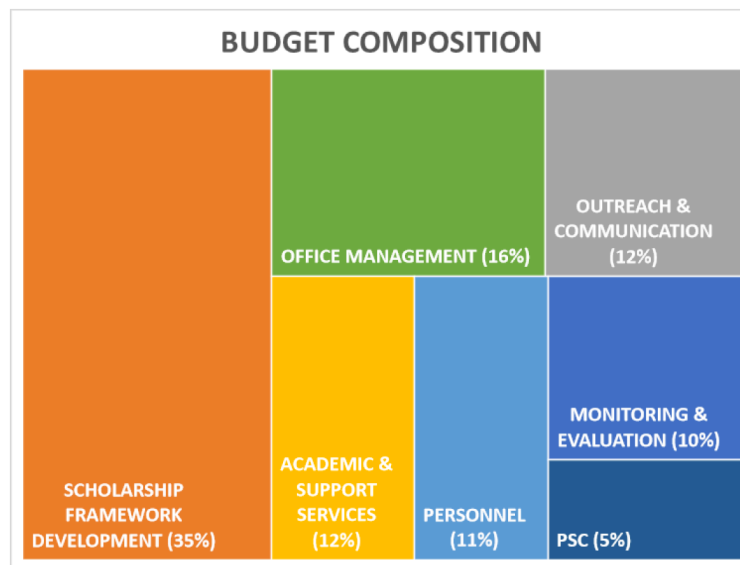
Over 3 years



**STEM**

Priority areas

For undergrad or technical studies



## Our Aim:

**Enhance equitable access to quality higher education for high school graduates from low-income backgrounds in rural Cameroon**

**Objective 1:** Increase awareness and outreach on scholarship opportunities the 5 FMEM districts through 2027.

**Objective 2:** Reduce the financial barrier to higher education (undergraduate degree) for at least 28 high school graduates by 2027

**Objective 3:** Strengthen community and institutional partnerships to facilitate access academic support, employment readiness, and personal development opportunities.

W.A.S.H



Delivering services directly

| Number of infrastructures built since 2019 | Communities (near people's homes) | Schools |
|--|-----------------------------------|---------|
| Clean water + pump                         | 8                                 | 2       |
| Decent toilets                             | 2                                 | 9       |
| Good hygiene through better facilities     | 18,521                            | 2,774   |

Our direct reach:



4200  
pupils with decent  
toilets



10,000+  
people with clean water



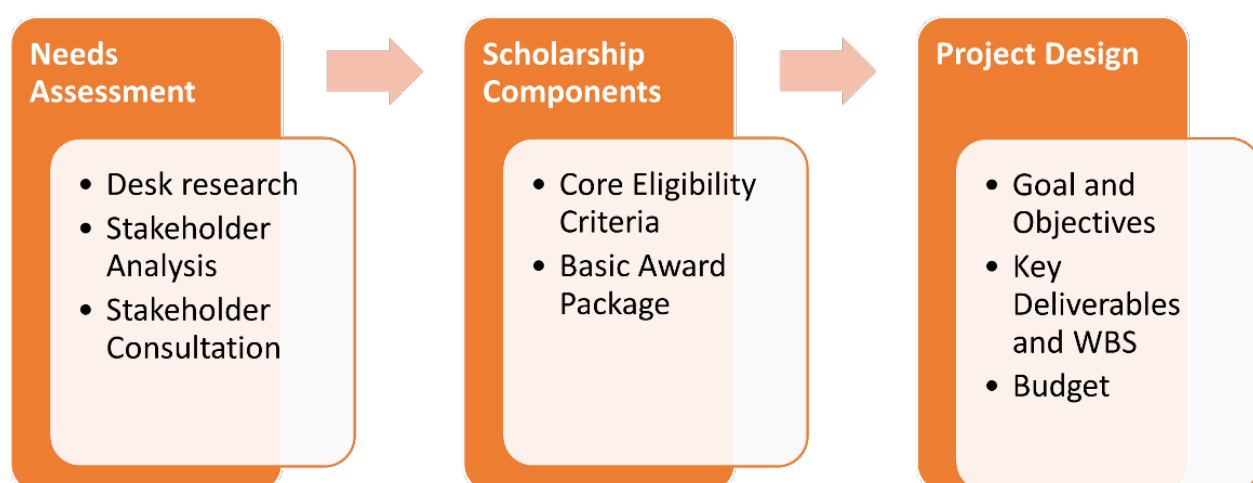
20,000+  
people with good  
hygiene

## The Challenge:

Based on a rapid assessment of the state of secondary and higher education in Cameroon, FMEM pitched a high-level concept for the scholarship fund to the sponsors that highlighted the following:

- Cameroon spends 25% less than other African countries on tertiary institutions (World Bank, 2023). As a result, support for students to access tertiary education, such as scholarships, is scarce.
- Only 14% of high school graduates can enrol in tertiary education (World Bank, 2023) and an even smaller percentage comes from low-income households.
- In FMEM's partner communities, 90-100% of students in these schools come from disadvantaged communities and low-income households. In these communities and others like it, over 70% of adolescents and young adults are out of school and/or struggle to find employment, due to limited knowledge, education, skills, and opportunities. A 2021 baseline assessment commissioned by FMEM also supported these trends.
- This is more accentuated for young girls. Beyond the costs associated with schooling, adolescent girls face additional barriers, particularly at the secondary level, primarily due to the burden of household chores, expectations of marriage, and teenage pregnancies (Sobngwi-Tambekou et. Al, 2022).
- At the continental level, major trends in skills gaps in African economies highlight a shortage in Science, Technology, Engineering and Mathematics (STEM) related skills. This trend can be extrapolated to apply to Cameroon (ILO, 2019), and in the context of globalization, can be priority disciplines.

## Methodology:



# Independent Auditor's Report

# Independent Auditor's Report.

## Respective responsibilities of trustees and examiner.

The charity's trustees consider that an audit is not required for this year (under section 43(2) of the Charities Act 1993 (the Act)) and that an independent examination is needed.

It is my responsibility to:

examine the accounts (under section 43 of the Act), to follow the procedures laid down in the General Directions given by the Charity Commission (under section 43(7)(b) of the Act), and to state whether particular matters have come to my attention.

## Basis of independent examiner's report

My examination was carried out in accordance with General Directions given by the Charity Commission. An examination includes a review of the accounting records kept by the charity and a comparison of the accounts presented with those records. It also includes consideration of any unusual items or disclosures in the accounts and seeking explanations from you as trustees concerning any such matters. The procedures undertaken do not provide all the evidence that would be required in an audit, and consequently no opinion is given as to whether the accounts present a 'true and fair' view and the report is limited to those matters set out in the statement below.

## Independent examiner's statement

1. which gives me reasonable cause to believe that in, any material respect, the requirements: to keep accounting records in accordance with section 41 of the Act; and to prepare accounts which accord with the accounting records and comply with the accounting requirements of the 1993 Act; have not been met; or
2. to which, in my opinion, attention should be drawn in order to enable a proper understanding of the accounts to be reached.

Mr. Owona Godfrey  
Expert Comptable  
24th May 2024



# Financial Statements

# Consolidated Statement of Financial Activities

|  | Unrestricted funds | Restricted funds | Total 2023 |
|--|--------------------|------------------|------------|
| Previous Year  | 3,973              |                  | 3,973      |
| <b>Income from:</b> Donations and legacies             |                    |                  |            |
| Investments  | 51,304             | 5000             | 56,304     |
| Other  |                    |                  | 0          |
|  |                    |                  | 2,000      |
| <b>Total Income</b>                                    |                    |                  | 62,277     |
| <b>Expenditure on:</b>                                 |                    |                  |            |
| Raising donations and legacies                         |                    |                  | 1,109      |
| Investment management costs                            |                    |                  |            |
| <b>Raising Funds</b>                                   |                    |                  | 1,109      |
| <b>Net income available for charitable expenditure</b> |                    |                  | 61,168     |
| <b>Expenditure on:</b>                                 |                    |                  |            |
| Service provision                                      | 12,374             | (4500)           | 16,874     |
| Informing the public about our work                    | 920                |                  | 920        |
| WASH and Scholaeship                                   | 40,980             |                  | 40,980     |
| <b>Total Charitable Activities</b>                     |                    |                  | 58,774     |
| <b>Net (expenditure)/income</b>                        | (54,274)           | 500              | 2,394      |
| <b>Net movement in funds</b>                           | (51,304)           | 500              | (59,883)   |
| <b>Total funds brought forward</b>                     | 0                  | 500              | 2,394      |
| <b>Total funds carried forward</b>                     | 0                  | 500              | 2,394      |

# OUR PARTNERS



**Secrétariat à l'Education (SEDO)**



**FOUNDATION M.E.M**

**52 SHAW RD, BEESTON,**

**NG9 6RS, BEESTON**

**UNITED KINGDOM**