

# **Annual Review: Oct 2024 -Sept 2025**



**Ending Hunger Together**

# A Thank You to Our Donors

Without our donors we would not be able to help anyone.....

- In total over 16.721 tonnes of food was donated in the year (21 tonnes last year and 32 tonnes in 2022/23) equating to £46,300 using a value/kg from Trussell.
- In addition, 5,639kg of food was purchased using £20,935 from monetary donations (2023/4 – 5,983kg at a cost of £18,541)
- It has been a tough year for cash donations in the community: these are down from £29,980 to £19,800. We are grateful for all those who have continued to support us in difficult times.





# Collection Points

## Supermarkets:

Tesco  
Waitrose  
Aldi  
Co-op  
B&M

## Churches:

Holy Cross Church (Pattishall)  
St Nicholas Potterspury  
St Lawrence Church (Towcester)  
St John the Baptist Church (Abthorpe)  
St Mary Magdalene (Helmdon)



# Sources of food donations

Donor	2024/5	2023/4	2022/3
	Kgs	Kgs	Kgs
Supermarkets	11,398	14,086	16,474
Churches	2,174	2,193	2,973
Private Individuals	740	1,413	3,624
Schools / Nurseries	1,254	1,576	1,871
Community Groups	696	572	807
Corporate Organisations	350	965	2,001
Charities	97	380	348
<b>Total Donations</b>	<b>16,709</b>	<b>21,249</b>	<b>28,098</b>



# Year (2024-5) Food Donations and purchases (kgs)

		TFB year	
Sum of Stock in (kg)		2023/4	2024/5
Stock in/out type	Supplied from/to		
Donation	Tesco Towcester	6,182	5,210
	Waitrose Towcester	5,479	4,313
	Aldi - Towcester	2,163	1,613
	Private	1,413	740
	Nicholas Hawksmoor Primary School	141	308
	St Nicholas Potterspury	204	244
	All Saints Adstone	170	227
	Cherry Lane Garden Centre		225
	Blisworth W I	221	222
	Sponne School	135	212
<b>Donation Total</b>		<b>21,249</b>	<b>16,709</b>
Purchased	Tesco Towcester	4,361	3,744
	Aldi - Towcester	301	126
	Amazon UK		363
	B & M	838	1,106
	Morrisons Northampton	75	254
<b>Purchased Total</b>		<b>5,983</b>	<b>5,639</b>
<b>Grand Total</b>		<b>27,187</b>	<b>22,347</b>



# Year Snapshot

## How was Food Issued?

- During the year, 922 vouchers (2023/4 - 985) vouchers were fulfilled providing support for 2,354 people (2023/4 – 2,732) Of these 910 were children (2023/4 - 1,132)
- A total of 22,842kg (2023/4 – 24,522kg) of food and household items was distributed to local people in need.



*\* Figures do not represent number of individuals, they include people / families who need to make repeat visits*

# Year Snapshot

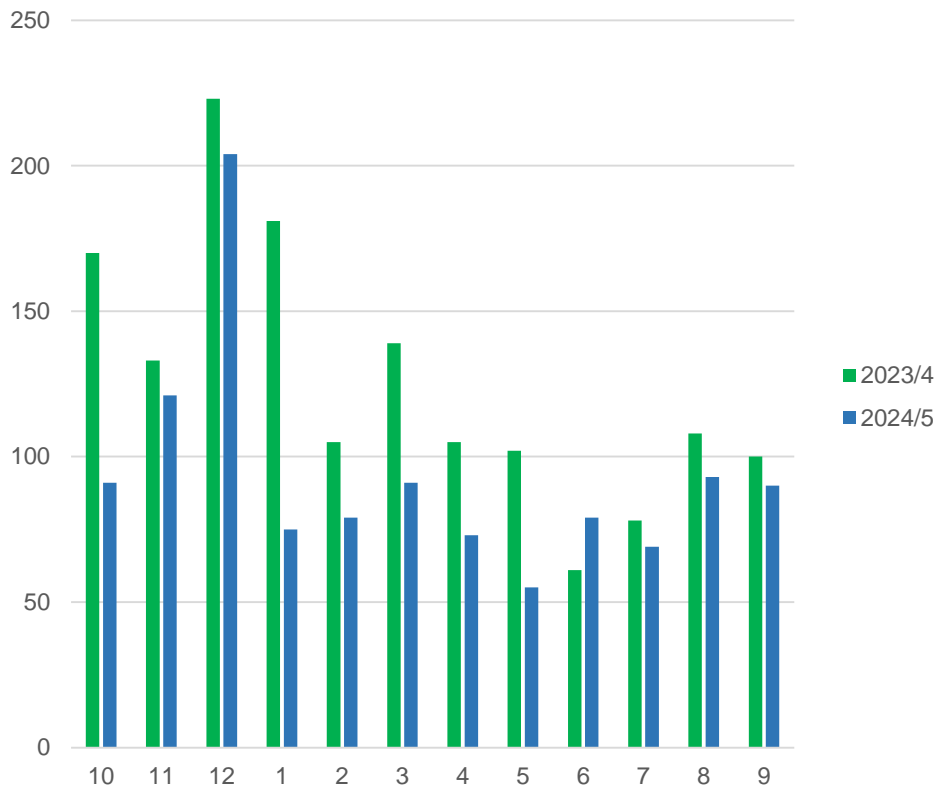
## How was Food Issued?

- 410 (45%) [2023/4 - 556 (56%) ] vouchers issued were for people living in the wards of Towcester and Roade.
- We have over 30 active local partner agencies who issue vouchers to those in crisis
- The foodbank issued 45% of all vouchers issued in the last 12 months. This is down 10% on last year and indicated stronger engagement with other agencies, especially our advice service, Community Law Service.
- 41% of vouchers were for single adult households
- 16% were for households of 2 or more adults
- 17% for single parent families
- 26% were for families

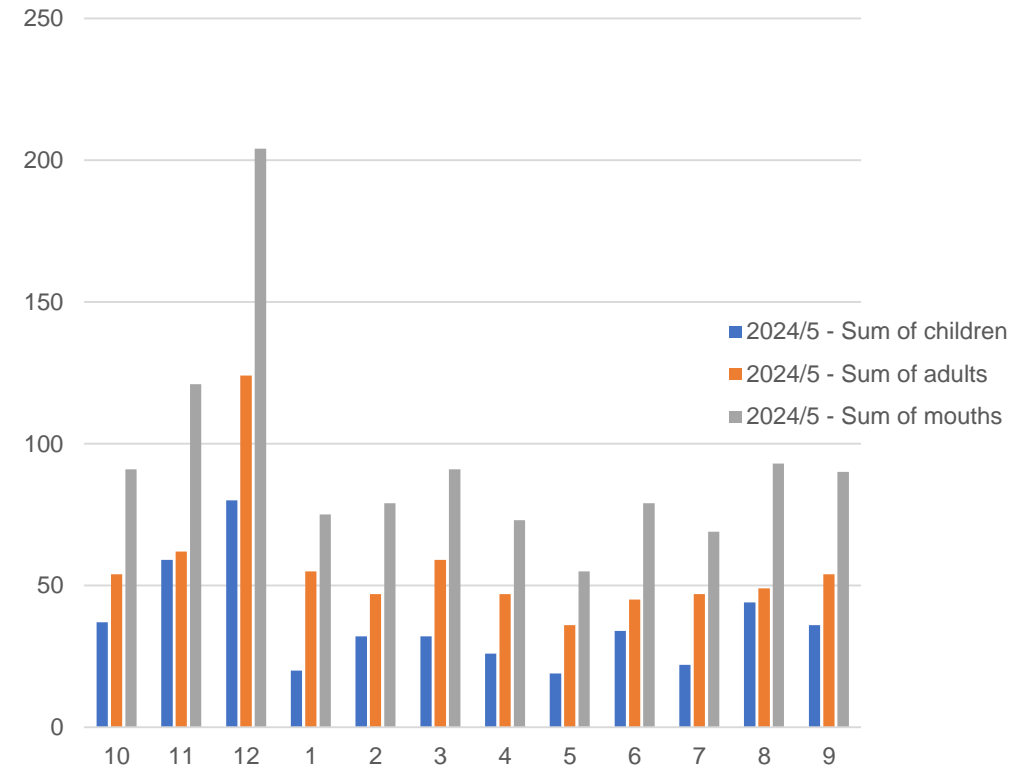
# Year Snapshot

## How was Food Issued?

This year v. last year mouths fed by month



This year adults and children by month

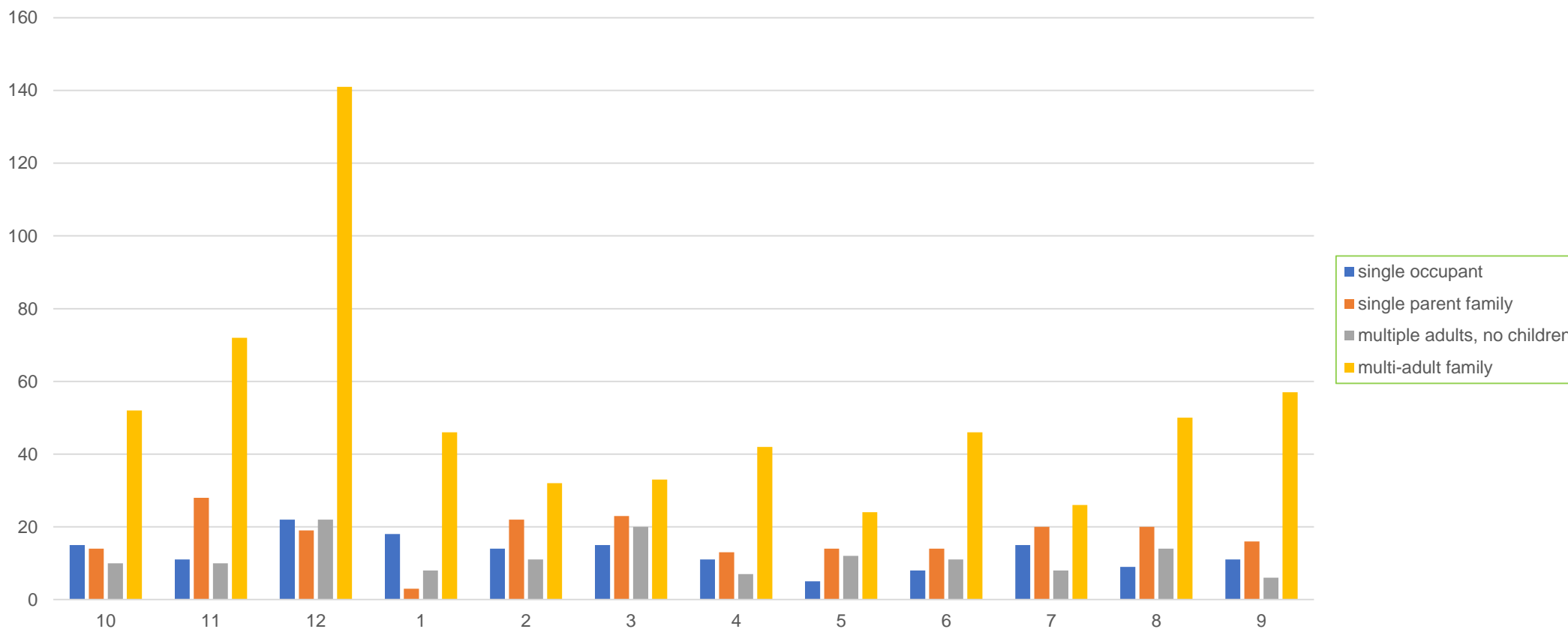




# Year Snapshot

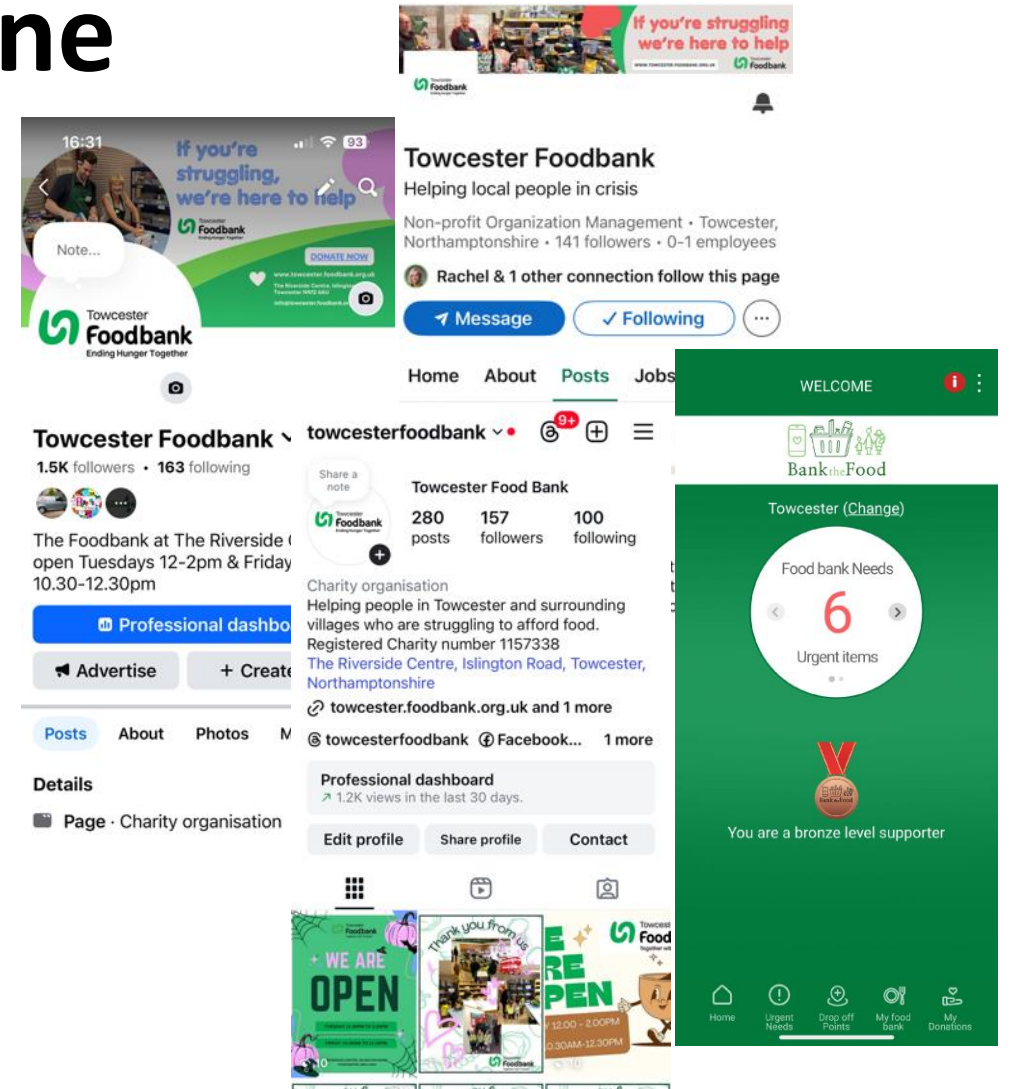
## How was Food Issued?

Mouths fed by month and household type



# Towcester Foodbank Online

- We now have a presence across Facebook, Linked-In and Instagram with a steady 1.5k followers and a monthly engagement rate which reached a peak of 13.5k last year
- We are also able to reach potential donors through our page on the BankTheFood App which is free to download
- Our Just Giving page has contributed £5658 to our funds



# Towcester Foodbank Highlights of 2024-5

- In July we moved into our new home at The Riverside Centre. Our amazing volunteers managed the move so well that we didn't miss a day of service
- Through our partnership with the Community Larder, we are now able to provide a range of fresh food for our guests to choose from as well as continuing to provide a selection of toiletries and other essential household products
- We were awarded a 5-Star rating following our Food Safety inspection in September 2025
- We successfully passed our three yearly Governance Check carried out by the Trussell Trust to ensure we have all the necessary policies and procedures in place
- We rebranded in line with the Trussell Trust changes





# Additional Highlights

## Part of the Wider Community

- We worked in partnership with Towcester CE Primary School whose Little Chefs after school club cooked recipes using a range of ingredients from our standard food parcels
- We hosted visits from a number of local youth groups including Brownies, Beavers and Scouts
- We joined in the St Lawrence Christmas Tree Festival in the magical world of Narnia with our imaginative take on Mr & Mrs Beaver's home
- We hosted visits from a number of local councillors and our local MP to raise awareness
- We participated in the Trussell Trust day of action in London



# Additional Activities

- The partnership with Community Law Service continues with an adviser present at both sessions during the week. Over the year the service saw 134 of our guests, improving their financial situation by a total of £162,000
- During December 2024, in addition to normal bags, we provided 114 Festive Food Hampers to households brightening up Christmas for 194 adults and 145 children. We also gave out 82 books and 52 book tokens to the children and teenagers in families accessing the foodbank
- Using funds from HSF(6) we gave out bags of household cleaning items and also established a scheme to refer our guests to the Community Larder, covering the cost of their membership and 6 weeks shopping visits to move people into more sustainable food provision



# Trustees – the Current Board

- Chair: Helen Garton – September 2018
- Treasurer: Daniel Garratt – October 2024
- Operations Manager & Safeguarding: Emma Killick – June 2021
- Volunteer Co-Ordinator: Michele Rogers – October 2024
- Quartermaster: Cliff Henson – June 2021
- Partnerships: Stewart Buller - March 2025



# A Big Thank You to our Volunteers



# Finance Report - Key Points

## 01/10/24 – 30/09/25

Income and expenditure	Year Ended			
	30 <sup>th</sup> September 2025		30 <sup>th</sup> September 2024	
£	Unrestricted	Restricted	Unrestricted	Restricted
Donations and Grants received	19,794	21,830	35,977	29,638
Expenditure				
Food & Supplies	20,935	2,850	15,541	12,800
Rent	3,176		5,712	
Advisory provision	1,932	17,706		21,657
Other expenditure	3,874		8,553	
Net gain / loss	(10,124)	1,274	6,910	(4,819)



## Finance Report - Key Points cont'd

### 01/10/24 – 30/09/25

We have had a tough but not disastrous year. Even though our reserves are diminished, we still have plenty for the moment (over a year's worth at current spend rate).

Restricted income was received to fund the provision of an advisor at each session. This funding from Trussell will be reduced from April 2026 and stopped from April 2027.

We have been discussing raising more funds and will be campaigning for donations from early in 2026.

There are some cost efficiencies from collaborating with the Community Larder, but we expect our overhead costs at the Riverside Centre to be higher than they were at St John's Ambulance. The cost of the move itself was negligible.

RESERVES £	Unrestricted	Restricted	Total
At the beginning of the year	46,791	12,528	59,319
Surplus/(Deficit in the year	(5,771)	(3,080)	(8,851)
Closing balance	41,020	9,448	50,468



