

Charity Number: 1157053

Inspiring Communities Together

Report and financial statements
For the year ended 31 March 2024

Inspiring Communities Together
Reference and administrative information
for the year ended 31 March 2024

Charity number 1157053

Registered office and operational address Innovation Forum, Frederick Road, Salford, M6 6FP

Trustees Trustees who served during the year and up to the date of this report were as follows:

Mike Duddy	Chair, February 2017 – present
Lynne Marsland	Vice Chair, February 2017 – present
Ruth Potts	Secretary, October 2016 – present
James Kariuki	May 2018 - present
Ann-Marie Pickup MBE	October 2015 - present

Key management personnel

Bernadette Elder	Chief Executive
Antonia Dunn	Age Well Programme Manager
Carol Hyde	Child and Families Operations Manager
John Hoey	Marketing and Comms Manager – Start date July 2023
Joanne Inglis	Trainee Programme Manager (People and Place)

Operational:

Keveka Richardson Finance Assistant

Children and Families:

Nadine Murray	Early Years Manager – Resigned November 2023
Dawn Whelan	Early Years Worker
Janine Wallace	Early Years Worker
Claire Clayton	Early Years Worker
Naomi Cassidy	Apprentice Early years practitioner
Julie Kay	Development Worker advice and guidance
Guy Thompson	Community Connector Wellbeing Matters
Tina Tudor	Development Worker advice and guidance and training

People and Place:

Rosie Leonard Start date April 2023

Age well:

Andrea Whelan	Coordinator Age Well
Tori Taylor	Coordinator Age Well – Start date July 2023
John Rutter	Development Worker – Development Worker Age Well
Tonicha Wallace	Development Worker – Development Worker Age Well

Bankers

Cooperative Bank PLC
P.O Box 101, Balloon Street, Manchester, M60 4EP

Inspiring Communities Together
Trustees' annual report
for the year ended 31 March 2024

**Independent
Examiner**

Jennifer Daniel FCCA DChA
Slade & Cooper Limited, Beehive Mill, Jersey St, Manchester, M4 6JG

Inspiring Communities Together
Trustees’ annual report
for the year ended 31 March 2024

The trustees present their report and the unaudited financial statements for the year ended 31st March 2024.

Reference and administrative information set out on page 1 forms part of this report. The financial statements comply with current statutory requirements, the charity’s constitution and the Statement of Recommended Practice - Accounting and Reporting by Charities: SORP applicable to charities preparing their accounts in accordance with FRS 102.

Objectives and activities

The charity’s principle objectives as set out in the constitution are:-

- To develop the capacity and skills of those who are socially and economically disadvantaged, by working with individuals and groups who live or work within the neighbourhood of Charlestown and Lower Kersal (CHALK) and neighbouring districts
- To work with individuals and groups within these neighbourhoods to help them make a difference locally

Our Visions	
Inspiring Housing	Inspiring Communities Together
Providing housing to create a place where everyone feels they belong	A place where everyone has the opportunity to achieve their full potential and participate in making a positive difference to their neighbourhood.
Our Missions	
Inspiring Housing	Inspiring Communities Together
Providing and managing housing (including social housing) and providing assistance to help house people and associated facilities, amenities and services	We will achieve positive outcomes for local people based on the knowledge understanding and information that the community have about their area, through empowering individuals and groups to release their potential to develop their own solutions
Values	
<ul style="list-style-type: none">• We will be accountable to and representative of the local community• We will be innovative and provide value for money in our approach to deliver of everything we do• We will value all volunteers, staff and members of the organisation	
Difference we want to make (Aims)	
<div><div> STRENGTHENING LOCAL VOICES</div><div> IMPROVING PEOPLES LIVES</div><div> CREATING BETTER PLACES TO LIVE</div></div>	

Measuring out impact

As a neighbourhood-based Charity we recognise the importance of understanding and acting on the voice of those we work for and with. We have now established a model which takes a lifecycle approach to ensure that people age well throughout their lives:

Inspiring Communities Together

Trustees' annual report

for the year ended 31 March 2024

- Supporting our younger members of the neighbourhoods to have the best start in life
- Providing opportunities for people of all ages to develop and grow and ensure that they are equipped to improve and enjoy their own neighbourhoods.
- Continuing to lead on the delivery of Age Friendly Salford ensuring older people have a voice and can stay healthy and wellbeing within their own neighbourhoods.

The delivery plan for 2023/24 builds on this approach alongside ensuring health and wellbeing is key to all we deliver.

Delivery model 2023/24

Children and Families		People & Place	Ageing well
Start Well	Live Well	Age Well	
<ul style="list-style-type: none"> • Continue to develop our play and stay provision to engage families early • Offer a quality early years provision for local families Maintaining at least good Ofsted rating • Provide affordable after school and holiday programme for working families • Provide Social prescribing provision as part of Wellbeing Matters partnership • Provide advice and guidance support • Increase awareness of benefit entitlements and support 	<ul style="list-style-type: none"> • Work with neighbourhood management teams to offer joined up approach to neighbourhood work • Support local people to be resilience in face of climate emergency, extreme weather and pandemics • Support the regeneration of public green spaces • Work with local people to maintain and use the natural spaces within their neighbourhoods • Offer at least one introduction level post (Apprentice/Trainee role) • Provide quality learning opportunities for both the local community and staff members 	<ul style="list-style-type: none"> • Delivery of the AFS contract across neighbourhoods of Salford • Test neighbourhood working model within one neighbourhood of Salford 	
Working Together		Continue to build our partnerships to ensure wider opportunities and resources within neighbourhoods	
Community Led Homes – Inspiring Housing Community Land Trust		Deliver our commitment to take ownership of homes for local people through our Community Led Housing model Achieve RSL registration and develop Inspiring Housing as recognised provider of social housing in Salford	

Structures we engage with

We continue to recognise the importance of engaging with as wider a partnership as possible both to gain knowledge and skills to improve our own delivery but also to share our learning with others. Based on our current programme of work we are engaging with:

National	Greater Manchester	Salford	Neighbourhoods
Social prescribing network	GMCVO GM Ageing Hub	Salford CVS Vocal Leaders	Resilience Forums

Inspiring Communities Together
Trustees’ annual report
for the year ended 31 March 2024

Centre for Ageing Ofsted	Greater Manchester Sports	Equalities Board 3 rd Sector Consortium Social prescribing steering group Social Value Alliance	East Salford Community Committee Neighbourhood Management
--------------------------	---------------------------	---	--

Sustaining our programme

The priority for Inspiring Communities Together delivery will remain within Charlestown and Lower Kersal (CHALK) for work funded through the Annuity whilst continuing to seek and secure resource opportunities which build on the learning from this work but may be delivered in different neighbourhoods across Salford or wider Greater Manchester footprint. Currently this includes:

- **Seedley and Langworthy Annuity** - Working in Seedley and Langworthy neighbourhood of Salford - this work is funded via Salford City Council from rent for two shops in Langworthy as part of the legacy agreement with Seedley nd Langworhty Trust and transferred to Inspiring Communities together as part of the merger.
- **Age Friendly Salford** – Working Salford wide to deliver a programme of health and wellbeing activity – this work is funded thorough Salford Public Health as a contract
- **Inspiring Housing** - an independent Community Land Trust, which is a subsidiary of Inspiring Communities Together and provides affordable homes for Salford residents. Profits generated by Inspiring Housing each year are donated to Inspiring Communities for Charitable activities.

Investing in our staff: We continue to support the wellbeing and personal development of our staff, recognising that the majority are also local residents of Salford. This year we carried out a staff survey. Feedback was very positive, however there were some areas which were highlighted

What you said
about working
at Inspiring
Communities
Together

Good place to work

Work is exciting and rewarding

Opportunities to learn and grow

Good team work ethic

Challenging, busy, negative, corporate

Things
you said
we could
improve
on

Office environment – make less clinical

Wellbeing – encourage more staff wellbeing activities – Rag rating does not work for all

Team sharing – Daily huddles

Away Days – more than 2 a year

Line management – Open conversation

Celebration events – Review current model

Inspiring Communities Together

Trustees' annual report

for the year ended 31 March 2024

As we do each year annual appraisals are carried out each year during October and outlined below is the collective feedback

What helps staff	What we need to keep in mind as managers
<ul style="list-style-type: none"> • 1:1 weekly catch ups with line managers – 53% • 6 weekly 1:1 meetings – 59% • Wellbeing action plans (WAP) – 29% • Peer support from colleagues – 100% 	<ul style="list-style-type: none"> • Not all staff were aware of the wellbeing resources – review and revise the induction pack for new starters • Timetabled Office meetings were missed as a sharing opportunity

As a senior management team we have reflected on all the feedback and are now working with the team to introduce the recommendations including reintroducing monthly team meetings facilitated by a member of the management team but led by staff members.

During this year our Child Care Manager who has worked with us for the past 20 years took the decision to move on and take up an opportunity to establish a new child care provision in a different neighbourhood of Salford – we all wish her well in her new adventure.

Three new members of staff joined us across our programme of work:

- Marketing and comms – Senior management team
- Development worker - People and Place
- Co-ordinator – Ageing well

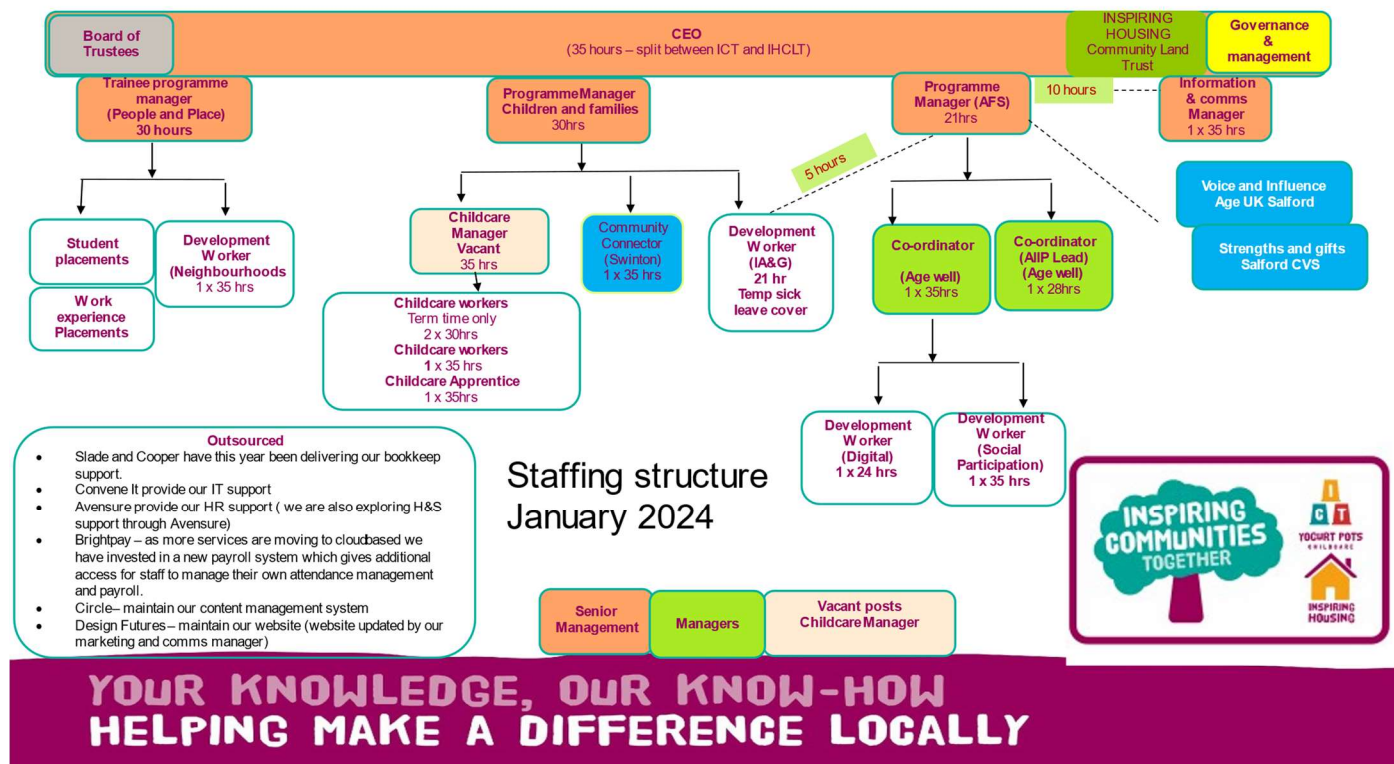
We have also spent time reviewing our operational structures and staffing requirements as we have found it difficult to recruit staff to roles or the number of hours required does not require a staff member. We have now outsourced the following operational roles as an operational decision rather than a stop gap to fill roles we cannot recruit to:

- Slade and Cooper have this year been delivering our bookkeep support.
- Convene IT provide our IT support
- Avensure provide our HR support (we are also exploring H&S support through Avensure)
- Brightpay – as more services are moving to cloud based we have invested in a new payroll system which gives additional access for staff to manage their own attendance management and payroll.
- Circle – maintain our content management system
- Design Futures – maintain our website (website updated by our marketing and comms manager)

Inspiring Communities Together

Trustees' annual report

for the year ended 31 March 2024



This model of working is providing a quality standard of back office provision without the need to recruit a number of different staff and enables the staff employed to carry out their delivery roles and managers to manage administrative roles more effectively.

Placements – we have spent time reviewing our placement offer and now–

- Work with universities to provide student social work placements – feed back from both students and the university has been very positive and enables students to gain an holistic person centred view of wellbeing
- Work with Salford City Council to provide placement opportunities for people looking for employment or in low paid employment and looking for a new role. Our offer is based on an eight week placement starting with two weeks of learning and six weeks practical learning in child care, admin, marketing and comms or environmental projects. From testing this approach we have now been successful in securing funding to deliver the model for the next financial year.

Our approach to digital first

In 2001/2022 we worked with Salford University to explore how digitally mature we were as an organisation. During 2022/23 we have focused on Communications and Campaigns (scored 29% on our digital maturity matrix)

Our new Marketing and Comms Manager started work in July 2023 and has been working through the key areas highlighted including:

- increasing our social media presence.

Inspiring Communities Together

Trustees' annual report

for the year ended 31 March 2024

- Updating our website – we are currently in the process of working with Designfutures to create a new website for Inspiring Communities Together recognising the core work we deliver and how people access information on our child care offer and the relationship between Inspiring Housing Community Land Trust and Inspiring Communities Together. It is expected that the new website will be ready later in 2024.
- During 2023/24 we have spent time developing a link between national campaigns and the work we deliver locally. This approach will provide opportunities for us to connect with a wider audience and connect our programmes of work

Our programme of activity

Set out below is the programme of work delivered by Inspiring Communities Together during 2023/2024:

Children and Families - Provide excellent quality child care provision in CHALK: *Early years, Afterschool clubs and holiday provision*

We have continued to develop our Children and Families offer which is now a key element of our support for families in Charlestown and Lower Kersal providing:

- **Play and stay** – supporting families with pre-school children
- **Early years** – funded and low cost for families with children aged 2-3 years of age
- **After school provision** – low cost provision for children attending Lower Kersal and St Pauls primary schools
- **Holiday club provision** – low cost holiday provision to enable working parents to remain in work
- **Family holiday activity** – free activities to support low income families during school holidays
- **Advice and guidance support**
- **Wellbeing Matters Community Connector**

In 2011 the Charity took on the management of Yogurt Pots early years provision as part of our commitment to sustain local provision which had been funded through the Annuity. Over the past few years we have continued to develop this provision and now provide support for families and children including Play and Stay, Early years including funded places, affordable after school and holiday club provision, free family holiday activities. We recognise that families may also be struggling for a variety of reasons and therefore we now offer a free advice and guidance provision, supporting families early to manage the challenges they may be facing.

Stay & Play - We have engaged with 41 families since starting the sessions in 2023



We continue to see regular attendance from a core group of families and others who attend when they can as well as new families continuing to join the Monday morning sessions.

We have starting to see more dads bringing their children, developing their



Inspiring Communities Together

Trustees' annual report

for the year ended 31 March 2024

confidence mixing in social situations and being involved in craft/messy play activities.

We also have two local childminders who come along as it is a good social time for both themselves and children as it enables them to engage with other adults/families.

Two children who attended these sessions started in our nursery in January 2024, one will be using their 2 year old funding entitlement, one who is paying for sessions. This is showing a shift in the community makeup as historically we would only have families attending who are accessing funded places.

"Thank you very much for supporting me at a time when I felt isolated and helpless.

***Everybody has really tried to help me at a time when I had no other support
and I will never forget that"***



During this year we have engaged with families from just outside our normal catchment including Prestwich as they have identified there is limited affordable facilities within that area. This is highlighting the impact of the cost of living crisis as historically families from this neighbourhood would not have come down to Kersal to access services

Along-side the play sessions we have introduced some learning opportunities for family members:



- healthy eating
- accessing local green spaces including taking part in the GM walking festival
- held a first aid session delivered by the Red Cross.
- Working with our Age Friendly Digital Team we held a session on "Digital with Children" to give information to families and grandparent's how to have fun and interact with children when using technology, what systems are available and most importantly how to keep children safe.

Early Years - There were 23 children places during this financial year

During the first quarter of the year is a period of planning and supporting the children who will be transitioning into Nursery School, we had 19 children who left in July to start their fulltime school journey. As with every year some children remained with us and we started the recruitment process for new children (Following an open day in July 5 places had been filled with more expected).

During the summer shut down months we have reviewed how we deliver sessions and now encourage families to take up full days rather than half days This provides a better environment for the children and enables the staff team to give more 1-1 support to those children who need a bit of extra support. We have adopted a new approach to children attending the setting and provide a 9.00am – 2.00pm offer. 15 children now attend daily sessions and parents have commented how much better the new hours work, enabling time to drop off school age dropping and times fit with working parents going back to work part time. This year has been one of our best years for recruitment with the majority of the places filled by September when the new term started and we now have a waiting list.

Inspiring Communities Together

Trustees' annual report

for the year ended 31 March 2024

Whilst we could look to offer a few more places within the setting we are seeing an increase in children with Special Educational Needs (SEND) and currently supporting 5 children in our setting which requires additional support from staff, during a visit from our Community Nursery Nurse she said that we are starting to see a trend from babies born during lockdown coming through needing additional support. Staff having been completing two years old checks with parents which are now being done face to face and we have had some lovely feedback about how happy they are with our provision.

"Thank you for all your hard work, I know my child is safe with you and she is doing really well. She is more confident and her English has improved so much. When we have more children we would like to send them here too"

Personal Story

A family (mum, dad and 2 year old child) moved to England from Hong Kong approximately a year and a half ago and were looking for childcare for their child. English was not the families first language, but both parents were keen to learn, and were determined their son would speak English before he started school nursery the following September 2023

A neighbour recommended Yogurt Pots and within a few weeks of entering the country their child had a nursery place with us accessing the governments two year old funding scheme, which gave the child access to 15 hours of free childcare.

Both parents interacted well, joining in with nursery and family activities. During the child's time at Yogurt Pots we supported him with his English language skills. When the time arrived for the child to transition to school Yogurt Pots staff again provided support to the family to register for a place. The child successfully transitioned to "Big school" and is now attending full time.

The family have been in touch and said they are very grateful for all the help we have given them over the time that their child attended Yogurt Pots especially with encouraging their child's English speaking and how he has grown in confidence.

The family continue to attend our family activities and asked for us to keep them up to date with any other activities that arise.

After School Club – We have 10 on roll from St Pauls and 7 on roll from Lower Kersal

This is an area of delivery which has seen increased growth over the past year, however 2 children have moved out of the area and changed schools so we will need to continue to review this offer to ensure we are reaching as many families as possible. Whilst historically most children came from Lower Kersal Primary School this has declined over this year but more children are attending from St Pauls.

We have had 1 child who used to attend 2 years ago re-joined us as parents circumstances have changed. We are also supporting a looked after child who's place is being funded by the local authorities.

A few years ago we invested consider amount of money on creating an outdoor class room provision. The children now have the opportunity to spend more time outside:

Inspiring Communities Together

Trustees' annual report

for the year ended 31 March 2024



- Engaging in team games which have included football, hide and seek.
- Engaging in our junior Green Champions programme learning about nature exploring colours textures different species of leaves and taking part in craft activities.
- Under the canopy area the children have been using the blackboard to play games of hangman and also drawing pictures in stages, with other children trying to guess what the finished drawing will be. They have also made a multicultural wreath by drawing around their hands, cutting them out to create a wreath to display in the setting, talking about how we are all different, yet the same!



We constantly look at ways to bring together our teams and through the After School Club we are working with the People and Place Team extending the curriculum for the children to learn about nature, growing and how to look after the community which they live in. Activities have included :- litter picks on Riverbank Park, Creating art out of nature and Planting and growing cress.

Holiday Club – We had an average of 15 children each day with a maximum of 25 children

The government initiative to support families on low income during the school holiday has in Salford been partly administered by Salford CVS in the form of grants and access to free lunch provision. Inspiring Communities were successful in securing funding during 2023/24 and have at the end of this year submitted a successful bid for funding to cover 2024/25 holiday provision.

The funding has provided some income to cover staff costs, the purchase of new resources and opportunities to buy in additional provision the children would not have been able to access without the money.

As with our other programmes of delivery the focus is on health and wellbeing with much of the activity focused on using outside space, both our outside class room and local green public spaces.

Activities included :-



- Sessions with MIFA (Manchester International Football Academy)
- Visit from Curious Critters learning about small animals and habitat
- Sensory walks along the Riverbank
- Green & Grow activities

- Science experiments



- healthy eating and making fruit cocktails and their own fruit salad for snack
- collected natural materials from a walk along the Riverbank to create collages using their own ideas, from pictures of cats to palm trees, and forests, some of which are now on display on the stairwell entrance to the setting



Inspiring Communities Together
Trustees' annual report
for the year ended 31 March 2024

"I was worried my son might become bored in the setting but there is no chance of that with all the activities put on."

"Money is a bit tight at the moment so free provision has really helped. Having the option of free snack and lunch has been a big help. I felt happy sending my child as they have previously attended the setting and I have been able to work during half term. It has helped my child to socialise with other children"

"I just want to say the staff were fab, Nylah never wanted to go home, when I collected her at 3:30 after work she asked why I had picked her up early and to come back later"

Personal story

My children have used the holiday club provision previously and thoroughly enjoy it, before they have only been for 1 or 2 days at a time because of financial reasons (even though it is great value, it's an extra expense)

My children have attended every-day throughout the Easter holidays with the free scheme in place, this has been a massive help and for myself and my husband, both financially and personally not having to stress/worry about even more budgeting to pay for child care costs and relying on older grandparents to look after them so we can work.

This has been so beneficial to all of us, The weight that has been lifted these two weeks is massive. The children have great days, very well cared for and fed, get to play and socialize and come home with big smiles.....or tears because they don't want to leave.

Thank you to yogurt pots for helping working families!

Family activities – 4 events held

This is an area we are working hard to develop. We recognise that it has not always been easy to encourage families to engage in what we offer, often seeing Nursey as a place to leave children for a few hours. We however recognise that once we can engage with families we can encourage wider engagement in their children's development and give early help, signposting for those who need help.

We continue to try and develop a whole family approach and break down some of the barriers between young and old through intergenerational activity. This year we held an intergenerational garden party to mark the Kings Coronation. This is the second time we have held intergeneration events in the open space of Yogurt Pots and is always great to see the older members of the community mixing with the children.

"I have had a lovely day out, after walking this morning and now coming here, it's a lovely atmosphere and nice to watch the children enjoying themselves, and I have made myself a crown"



Inspiring Communities Together
Trustees’ annual report
for the year ended 31 March 2024

We have held 4 family activities during the Summer using various spaces in the local community which included the studios and cages at the sports village, our outdoor classroom and St Sebastian’s Community Centre.

Children and families have engaged in street dance, den making, sports day, fun day with environmental activities and a visit from Circus Frank. The parents were as eager as the children to take part and joined in throughout the sessions, families worked together using some of the resources we had purchased with funding from the Healthy Holidays Fund.



There were opportunities to encourage children to use their own ideas and imagination, communicating and taking on physical challenges. The parents gave lots of praise and encouragement to all the children to develop their confidence along with team building and working together.

"It's been a great morning, doing activities which have brought back old memories, things which I can do at home. My boys and myself have loved it and had so much fun!"

During the winter months Thanks to Tesco who kindly donated pumpkins we were able to hold our annual pumpkin carving event. One family who have twins are home schooled and the parent said how lovely it was to be able to engage and socialise with others, families who have previously attended our stay and play came along bringing friends with them, which in turn is promoting our family activities within the local community. The families saved the pumpkin seeds and were given laminated fact sheets about how to roast the seeds to eat at home!



We also held a festive event at the Sports Village where children from after school club attended along with families. One of our Social Work students had planned craft activities for the families and we provided a small buffet to include different foods which are eaten around the world during the festive period.



" Everything was great I would like to come to more activities like this, for my kids to have fun without a huge cost to me"

"We never tried the pumpkin activity before and we would like to have some fun and family activity during the half term break. It was great and we hope we can join more activities in the coming future"

Personal journey

Individual X started attending stay and play in Summer 2023, during a general conversation we discovered they are a local child minder and attending these sessions was positive for the children but also for themselves as it can be very isolating being at home all day.

During the school holidays they have attended our free family activity events with their grandchild and have also encouraged friends to attend with their children.

Although they currently look after their granddaughter at home they have asked about applying for a nursery place to encourage the child to mix with other children and detach themselves from being with family members and ensure they would then be school ready

Inspiring Communities Together

Trustees' annual report

for the year ended 31 March 2024

Advice and guidance – 62 people supported

We continue to invest in our own advice and guidance work, this is a part time post (3 days per week) and works across all our programmes and therefore is shared with our Ageing well and social prescribing worker who can refer people into the support ensuring quick access to advice and guidance. Alongside this support the majority of our staff have also completed level 3 advice and guidance qualifications.

Our advice and guidance worker has this year provided the following types of support :

- benefit related
- Housing
- Volunteering
- Debit advice

Personal story

Jane had connected with Inspiring Communities Together as she wished to enrol on a tech and tea course to help with her digital skills. Unfortunately, Jane found that as she is self-employed, she was unable to find the £30.00 needed to purchase the tablet which she needed for the course.

We contacted Jane to see what help and support we could offer and Jane met with our Advice and Guidance Worker who completed an income and expenditure form with Jane and found that she was able to receive some extra support as her income per month was limited and Universal Credit (UC) had closed her claim for the fourth time. She was also referred to the local foodbanks for some immediate help.

We worked with Jane to complete a Personal Independent Payment claim and apply for Salford Assist who supported her with £40 each for gas and electric and £100 for food.

Inspiring Communities together waived the £30.00 for the tablet so Jane could start the teach and tea course

A few weeks later she received notification from UC to say that she had been awarded arrears from 11/11/2023 to 10/5/2023, and was awarded £2139.19, as her accounts had been verified by HMRC.

She now has her council tax paid and has her housing benefits award. She has now claimed Employment Support Allowance as is unable to work.

Since completing the Tech and Tea course and getting the tablet she has attended courses with Carillion doing advanced IT and Maths. She is hoping in the future to gain a career in IT

We remain in contact with Jane for support and checking on her wellbeing. She now has a good group of friends in the local community where she lives who look out for her, has all her arrears cleared, and has her benefits sorted, except for PIP that she is waiting to hear about.

Personal story

CC was struggling financially and with her health. She was not entitled to Pension Credit as her husband gets a small personal pension. She had recently had a couple of operations one involving her heart which was quite a major operation and was also suffering from COPD. She struggled with everyday activities and her daughter helped with the daily tasks such as shopping and housework.

CC contacted us when she saw the contact details at Langworthy Cornerstone where regular IAG drop-

Inspiring Communities Together

Trustees' annual report

for the year ended 31 March 2024

in sessions are held. After an initial conversation with our advice worker CC was advised to request an Attendance Allowance form and to keep a diary about how her health. We helped CC complete the form. Two months later CC was awarded Attendance Allowance at the lower rate of £68.10 weekly as well as a backdated payment of over £500.

Previously CC's daughter, who works full time and lives more than a hour's drive from her mum's, had been coming down a couple of times a week to clean the house, do the shopping and run her mum to appointments. The Attendance Allowance meant that CC now employs a cleaner once a fortnight and can afford to take taxis to her appointments. She can now spend quality time with daughter rather than her daughter cleaning and running her to appointments.

CC said *"I feel I am more active and can get out more. I've started to meet up with friends again who I'd lost touch with as before I was dependant on my daughter to run me around. I am more independent now."*

CC contacted us again following a short stay in hospital, saying that she didn't feel safe at home when using the bath. We encouraged her to contact Age UK Salford and as a result she has had an occupational health assessment and has had grab rails fitted in the bathroom.



Social Prescribing: We continue to deliver the Wellbeing Matters Social Prescribing programme along with our other Voluntary Sector Partners. During 2023-24 the partnership supported over 5,000 referrals via GPs across Salford.

As can be seen from the demonstrating impact diagram Inspiring Communities Together wider over provides a valuable resource to the Wellbeing Matters programme

"Guy has helped me gain my confidence back which means I am now leaving the house on a regular basis, it is still difficult at times but I can cope with this much better than before."

The focus of Wellbeing Matters is to support health care professional reduce their own waiting lists by providing person centred support to individuals. Inspiring Communities Together provide a Community Connector to work with health professional delivering in Swinton including GP Practices and mental health providers

Set out is the reasons for referrals and the types of support individuals have been referred to

Inspiring Communities Together
Trustees’ annual report
for the year ended 31 March 2024

Reasons for referral



Connections out



People and Place based working

This area of work was on hold for a period of time during 2022 due to staff recruitment issues, however in April 2023 we recruited a new Development Worker and refocused the work for our Trainee Programme Manager to take a lead on the People and Place element of our programme of work as set out below



Our Trainee Programme Manager attends both East Salford and Seedley and Langworthy Resilience Meetings and regular meetings have been set up with the respective neighbourhood managers to ensure joint neighbourhood working. Including regular grot spotting and street checks.

Delivery programme – People and Place	
People	Place
<p>Placements – Supporting people to develop their knowledge of the voluntary sector whilst gaining into work skills and knowledge.</p> <p>Learning – Learning for work/learning for life. Employability skills and confidence building</p> <p>Work experience – Apprenticeship roles both introductory level (2) and next steps to enable staff development (level 3- 5)</p>	<p>Green Champions – the overarching programme delivered through a programme of neighbourhood activities and monthly group meet ups</p> <ul style="list-style-type: none">• Green and Grow – Intergenerational activity which takes place at Sports Village, Kersal bringing together community members with children from Yogurt Pots• Grow to Learn – Opportunity to learn more about growing and putting what you learn into practise. Takes place in Cornerstone and Chimney Pot Park• Junior Green Champions – Programme of learning and activities to support children develop their knowledge and take ownership of their own natural environments.• Street based activity – Regular litter picks bringing together communities to improve the place they live or work

Inspiring Communities Together
Trustees’ annual report
for the year ended 31 March 2024

Green Champion engagement:-

41 Adults:- including littler picks, Green and Grow, Grow to Learn and other activities

110 children:- Nursery, After school club and holiday club



Our initial plan was to recruit individuals as Green Champions to support our programme of activity, however we now recognise that people do not wish to commit to a volunteering role but are happy to engage in activities that meet their time commitment and interests.

We have developed our Green Campion programme as the overarching theme with a programme of activities which people can engage with as and when it suits them. Their individual engagement will be captured as we start to measure the behaviour change impact of individuals over 2024/2025,

Green Champions calendar of activities

Day	Venue	Activity	Time
Monday	In person/online please check our website for more details	Monthly Meet up	Check our website and social media for more details
Wednesday	Chimney Pot Park /Cornerstone	Grow to Learn Creating spaces to learn and grow	11am-1pm Weekly no need to book all welcome
Wednesday	Various locations	Neighbourhood activity including Community litter Pick	Please check our website and social media for details
Thursday	Salford Sports Village	Green and Grow intergenerational activity	1pm-3pm weekly no need to book all welcome
Thursday	Salford Sports Village	Jnr green champions	3.00pm – 5.pm Weekly environmental learning and engagement activity (After school club)

Green and Grow (CHALK)

This work has a focus on both the intergenerational activity at Sports Village working with the children who attend Yogurt Pots and older residents who live in Lower Kersal and activity in Riverbank park.



Riverbank Park not only provides a great play space for local families (this was refurbished through funding secured by Inspiring Communities Together a couple of years ago) but also has a small allotment and orchard which has not been maintained for a while. The reintroduction of the allotment is a key priority for 2024 we have now cleared the beds and are in the process of working with partners to gravel the paths in between the beds and replace the large planter so growing can start.

Inspiring Communities Together

Trustees' annual report

for the year ended 31 March 2024

To support this work we have once again built on our networks and commitment to building relationships with partners resulting in securing resources for the neighbourhood:



- engaging with Remidi (community payback) who are attended weekly green and grow activity.
- building relationships with Travis Perkins who are providing the resources in the park to gravel the paths.
- during volunteer week KeepMoat Homes support a neighbourhood litter pick



The work within the Sports Village allotment was off to a late start with planting as we were clearing the beds and seated planters but they did still manage to grow some crops of Strawberries, Potatoes, Lettice, Carrots, Cabbage and an abundance of Herbs. Wilkos donated Pumpkin seed, Spring bulbs and wild flower seeds whilst Lower Kersal Allotments donated beans, carrots and tomato seeds.

Unfortunately we have not been able to re-stone the paths or upgrade the planter which was due to be carried out through a social value commitment by Travis Perkins due to staff changes but we are still looking for resources to complete this.

We were however successful in securing an small grant from the East Salford Community Committee Devolve Budget for a new potting shed to replace the current green house which is no longer fit for purpose.

Grow to Learn group (Seedley and Langworthy)



The main focus of this area of work is the engagement of local people in Chimney Pot Park. Our initial work involved asking people about what they felt about Chimney Pot Park with people raising concerns about the fear of crime in the space. Our Development Worker has now started to deliver weekly activities in the park resulting in a small group of local residents supporting the project. The volunteers have started clearing beds and sowing seeds as well as planting herbs outside of the cornerstone.



Alongside the Seedley and Langworthy Annuity a small grant was secured to carry out some environmental activity in the neighbourhood with a focus on Chimney Pot Park. Working closely with RHS Bridgewater and the Mancunian way youth service we have created a bed in the park. By the end of the year the Green Champions had made great progress in clearing and maintaining the current beds and working on the development of a Nature Sensory Walk. With the support of our Development Worker one of our Green Champions is conducting his Masters Dissertation research project in the park about soil quality.



With the support from Salford CVS, RHS Bridgewater and ourselves the friends of Chimney Pot Park held their launch event on the 24th Oct. We have started to collect data round how the local community use the park and what they would like to see happen. We will be continuing to ask local people in the area how they use the park to help us gather data to secure funding for next year to further develop the park.

Inspiring Communities Together
Trustees’ annual report
for the year ended 31 March 2024

Alongside our activity in the park we continue to deliver weekly activities at the Cornerstone when the weather is too cold resulting in a regular group of local residents supporting the project.

As part of all our activities we conduct WHO wellbeing questionnaires and Loneliness questionnaires. This year the majority of participants in the grow to learn activities have reported an improvement in the wellbeing.

Personal Story

Andrew has lived in the Langworthy area for the past six years having moved from Kent. He has been claiming Employment Support Allowance for 4 years for PTSD and depression and did not feel part of the community so wanted to look at doing some volunteering.

Andrew was attending the Cornerstone as he uses the foodbank each week. This happened to be the same day as Inspiring Communities Together Advice and Guidance Worker was in the building offering support to people. Andrew told our worker that he had been doing some volunteering at Tatton Café as he had previously worked in catering but this was not a regular volunteering role and he wanted something a bit more structured.

We discussed that registering with Salford CVS would be a good start and contacted one of the volunteer development workers for Age Friendly Salford to see about Andrew registering as a wellbeing champion. Also discussed the environmental activity in Seedley and Langworthy delivered by Inspiring Communities Together.

Andrew is waiting for his references to come through for his volunteering as a wellbeing champion and then he is looking forward to starting some volunteering with the tech and tea project supporting older people to improve their digital skills.

Andrew is now regularly volunteering with the grow to learn project. He goes above and beyond in order to be useful during these sessions including staying behind to de-weed the area near Langworthy Cornerstone and reporting any issues in Chimney Pot Park during the week when we are not in the area. Andrew has now joined Salford Rangers and has made a special request to adopt Chimney Pot Park to see if this opens up opportunity for more improvements. He has also joined Salford Heroes litter picking and goes out every day. He is now making new friends and feels part of the community.

Junior Green Champions – Yogurt Pots, Sports Village

This programme of work is delivered across the Children and Families and People and Place Teams. The children who attend nursery and After school club provision at Yogurt Pots have been working with our Development Worker (People and Place) to develop a sensory section of the play area of Yogurt Pots garden ready for growing season by clearing vegetation, creating clay animals and habitats.

During the summer months the children who attend Holiday Club have engaged in environmental activities including:

Inspiring Communities Together

Trustees' annual report

for the year ended 31 March 2024



- Neighbourhood litter picks
- Using natural resources to create art and craft activities including nature wands, Leaf sun catchers and hedgehog prints
- Exploring the garden at Sports Village to encourage the children to use their senses and see that in a small space you can grow many different plants



National Tree Week took place between the 27th November – 3rd December 2023 and the children engaged in numerous activities to celebrate. They completed a tree labelling activity which led to discussions around the benefits trees have, especially in urban areas. To end on a fun note, the children decorated the Christmas tree! Nature crafts, including nature bracelets, inspire creativity alongside learning about nature and taking notice of small details such as colours, patterns, textures and shapes of leaves and flowers. Crafting with natural materials year round allows the children to notice the difference in materials they are using such as the types of materials available to them and their colours due to seasonal changes.

Placements

We recognise that providing space for people to learn what it is like to spend time in a work place can help them to make their own life choices. The chance to spend time in a place based Charity is something that many will never experience but those that do find it very rewarding.

We try to work with as many partners as possible to be able to offer short or longer term placement opportunities and all our staff recognise the value of this approach and provided a supportive environment for all our placements.

As with all our programmes of work we spend time testing the approach and developing the model during 2023/24 we have provided the following placements:

Social Work placements – 3 MMU social work student completed and passed their first placement with us. We usually only offer first placement opportunities due to the nature of our work and the experience we can provide, however we were asked if we could provide a student with her final placement as her current placement had broken down. We were able to work with the Social Work Team to ensure the placement gained some front line work experience and reviewed our own programme and now ensure all social work students have a case load through our check and chat and social prescribing work. We are delighted to report that this student has now passed her final placement assessment and will be leaving us in April

Salford Futures - We continue to work closely with SCC in supporting the Salford Futures programme.



3 of the Salford Futures placements completed their Work experience with us on the 20th December after completing 8 weeks we held a celebration event and presentation of certificates of attendance of core training.

This pilot has enabled us to work on what a work placement offer would look like and we have now mapped this out and applied for and secured funding to test the model further, looking to offer 30 placements across the following areas of our work: Child Care, Marketing and Comms, Environmental and Admin during 2024.

Inspiring Communities Together

Trustees' annual report

for the year ended 31 March 2024

Smart Futures – A 10-week program that provides training, mentoring and work experience to young people aged 16 and 17. Two young people joined us in April for their 2,5 days of work experience

Annual neighbourhood consultation – 110 completed

Each year during quarter three delivery we ask residents to complete a short neighbourhood questionnaire to help us gauge how the community is feeling about where they live.

We have developed the questionnaire as an online form and distributed the link via social media and our local contacts during October – December 2023. The staff team encouraged people they were supporting to complete the forms, and the nursery staff encouraged parents and older children to complete forms.

Demographics - 75% of respondents live in Charlestown, Kersal, Seedley or Langworthy

Female	62%		Male		35%		other/self describe		3%	
White British	77%	Black/Black British	13%		Asian/Asian British		9%		other	1%
17 and under	8%	18-24	15%	25-54	42%	55-74	31%	75 and over	4%	

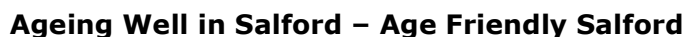
Nearly all the areas show a increase in results with some at an all time high from when we started the consultation five years ago. The neighbourhood consultation told us that:

- 12% of people asked felt they could not access the resources needed to manage their physical or mental health – **26% 2019/20 covid question**
- 73% of people asked felt they were making more healthy choices – **63% 2015/16**
- 30% of people asked felt they had an opportunity to be active in their community – **33% 2015/16**
- 41% of people asked felt they were connected with others in their community – **32% 2015/16**
- 51% of people asked told us they are trying new activities or learning new skills - **38% 2015/16**
- 64% of people asked felt safe in their own neighbourhood - **57% 2015/16**
- 81% of people asked felt they were making more green choices - **63% 2015/16**

Whilst the data collection is not carried out to research standards and we do not ask the same people the same question each year the feedback does provide a valuable insight into how people feel about living in two neighbourhoods of Salford over a period of time.

As can be seen when the data is mapped against year one figures there continues to be a small improvement in nearly all the data sets – around 10%. Notably the one data set which has seen a decline is people feeling active in the community. This number has decreased over the period of Covid and since the local forums we facilitated have not started up again.

During 2024/25 we will use the Green Champion monthly meet ups as an opportunity to have conversations with people about being active in their community to see if this will engage more people in taking an active role in helping to have a voice and make positive changes.

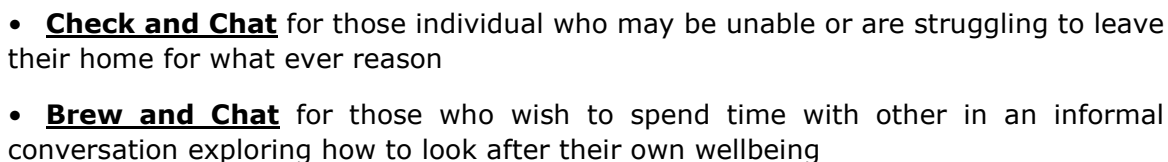


In January 2023 we started the delivery of the five year contract for Age Well, funded by Salford City Council and delivered in partnership with Age UK Salford and Salford CVS. Whilst we have been the delivery lead for this work for a number of years we were previously not the contract holder so this will be the first major contract that Inspiring Communities Together has secured and will lead on.

Between January – December 2023 we engaged with

- Over 550 unique older people
- Our Volunteer Wellbeing Champions completed just under 900 hours of volunteering time.
- We supported 300 people, (those who work with or support older people in their own homes) to gain knowledge and skills on a variety of wellbeing learning activities including: Wellbeing Conversation, Eating Well in Later Life, Six Steps to Preventing Falls, Breath Better (COPD) so they can provide information to older people to help them remain safely in their own homes and look after their own health and wellbeing.
- The launch of our bespoke Age Friendly Salford website has generated around 5,000 hits during 2023.

Our programme of activity includes:



- **Walk and Talk** – for those who wish to improve both their physical and mental wellbeing
- **Tech and Tea** – 5 week low level digital skills programme delivered in community buildings
- **Learn with Lunch** – 5 week learning programme aim at older people to help them with the knowledge to look after their own health and wellbeing at home



"Being involved in AFS activities has changed my life. I've met some fantastic people and feel part of my neighbourhood again."

Inspiring Communities Together
Trustees' annual report
for the year ended 31 March 2024



"AFS has given me back my confidence. I lost touch with people after my husband passed away, and now I'm in contact with people almost daily."

"Thank you for keeping me informed of all the lovely activities which have been going on. I've enjoyed being part of them and hope to continue being involved in the new year."

Personal story

RH is from a showman background and would usually winter in Salford as a child and then as an adult as there was no work traveling in the winter months. With this background, she had very little schooling which has left her with difficulties with reading and writing which in turn had stopped her from using technology including smartphones. RH was referred to AFS by Salford city council as she expressed an interest in learning about getting online but was concerned that as she cannot read or write, she felt she wouldn't be able to keep up with other people on the course. This was causing great anxiety.

Our coordinator contacted RH, explaining our Tech & Tea course outline and suggested that if she felt more comfortable, she could bring a friend to support her, which she did. Feeling more reassured she decided to book onto the course. At the first session we assigned one of our most experienced volunteer wellbeing champions to work with RH on a 1:1 basis and the two of them struck up a positive and trusting relationship. RH was excited to learn how to use the microphone function on Google which helped her search exactly what she wants without the pressure and worry about her spelling. RH had initially assessed her digital skills at 4.5 (out of 100), this increased to 36 (out of 100) at the end of the course. She told us she felt more confident about using technology and is regularly using the internet. *"Without the help from the course and the volunteers I wouldn't be as confident as I am, however I felt like I still have a lot to learn."*

She told us *"I have learnt more in the 5 weeks of the course than I have learnt in the last couple of years of English lessons"*.

She now feels more confident about going to other events by herself if her friend isn't available and that she can find out what is going on around her through the internet on her tablet instead of asking her friends. RH has stated that she would like to use her knowledge from the course to advance her learning in other areas and is hoping to get back into learning how to read and write, she says she feels more confident in looking at different courses online that would benefit her.

The age well work has enabled us to explore other funding opportunities and alongside the AFS programme we currently have three other externally funded pieces of work:

- **Dunhill Trust** – A partnership with Salford University to carry out research and community engagement to understand how older people connect post the pandemic.
- **Ageing in Place** – A partnership with Greater Manchester Age Hub and the local wider GM local authorities. The project is exploring how older people live/social connect within their own neighbourhood. The focus is on Charlestown and Pendleton and will create a neighbourhood action plan from the findings.

Inspiring Communities Together

Trustees' annual report

for the year ended 31 March 2024

- **National Institute of Health and Care Research** – working with older people this piece of work has trained older people as community health champions. This piece of work complements the Ageing in Place work as we are focusing this on the neighbourhoods of Charlestown and Pendleton.
- **Whose art, Whose culture** – Funded through the UK Shared Prosperity Fund the project explored the relationship between older and younger people within a neighbourhood. Using the medium of photography to engage a group of older people and young people exploring the people and places that are important to them within the neighbourhood of Pendleton and Charlestown.

Reserves policy

The Board have reviewed their current reserve policy and based on our financial history feel it is now in a position to define the level of reserves at six months delivery rather than nine months. Our overall policy is to maintain a sufficient level of reserves to enable usual activities should a shortfall in income occur. Based on our current delivery model outlined the amount of reserve equates to:

- **£240,000** to cover six months delivery at the current levels
- £20,000 based on the cost of developing a new project idea from concept to creating a model which can be scaled up and sold (this is based on a six month test phase).
- £10,000 Relocation costs based on the need to move all the equipment and purchase items currently part of the building we are located in

The current cost to ensure ICT has enough funds set aside to achieve the reserve policy agreed by the Trustees is now set at **£270,000**.

As at the end of this financial year the total reserves are £758,978 of which

- £229,796 are restricted by the funder.
- £9,555 are designated for specific purpose
- £30,237 are the value of the fixed assets leaving £489,390 as general unrestricted funds.

The Board have allocated funds in a CAF Deposit account with a view to meeting the reserve requirements. As of 1st March 2024 **£110,203** is held in this account and a further **£211,665** held in a Hargreaves Landsdown portfolio giving a current total of **£321,868**. This is enough to cover at least six months delivery.

Investment policy

Based on the approach set out above the Board of Trustees have considered how any surplus funds should be invested to ensure they are meeting their agreed aims of ensuring the reserve funds are protected but accessible if required as we currently hold limited surplus income other than our reserves.

Surplus funds apart from operating funding which are held in Co-op Bank all unrestricted funds are held in investments as set out in Inspiring Communities Together investment policy.

Inspiring Communities Together
Trustees' annual report
for the year ended 31 March 2024

Conclusions and Future Planning

As we come to the end of our 2023-2024 programme of delivery we have much to celebrate but also recognising that funding for the voluntary sector continues to be a challenge.

- Some of our funding streams will end in 2024, whilst others we are still waiting to hear if they will be renewed.
- Whilst we are not a political organisation we have to be mindful that changes in both National and local government can have an impact on the work we deliver and the funding opportunities available. The board are mindful of this and are ensuring that our core local offer is sustainable even if the wider programmes of work come to an end.
- Staff recruitment has become a major issue for us along with others our challenge at this time is the recruitment of more senior staff to fill management roles which our current staff are not ready to step into. We are however investing in our staff and continue to be innovative to support people remain in employment with us
- First steps into employment opportunities through our placement and apprenticeship model which supports those looking to come into work at the low level
- Maintaining our commitment to being a Living Wage employer despite the high increase in rate this year
- Offering all staff access to e learning both core and personal development courses alongside opportunities to expand their learning through a variety of courses (some funded some free)
- Providing a wraparound package of health and wellbeing support – building wellbeing into all staff 1-1 conversations.

Due to the prudence of the board we hold good reserves and have the long term commitment for SCC for the Annuity until 2047 (CHALK) annual review for Seedley and Langworthy which all provides the funding needed to ensure our core offer can be delivered.

The next steps to long term sustainability is the development of our community led housing model, which in years to come will provide the necessary funding to support Inspiring Communities Together Charitable delivery.

Whilst 2047 may seem a long way away the Board feel they time is now right to start planning for the future and the first stage of this is the development of a Strategic Plan setting out the priorities for the next four years.

Inspiring Communities Together

Trustees' annual report

for the year ended 31 March 2024

Strategic Planning

Over the past few months the Board have been developing a long term strategic plan. The development of this Strategic Plan has provided an opportunity to reflect on our past, build on the good foundations we have developed over the past twelve years and start to look forward to the next phase for Inspiring Communities Together.

Our own organisational values and principles of working are similar to those set out by Salford City Council. Whilst we in no way wish to replicate a council model our approach goes a long way to helping the wider partnership of Salford deliver positive outcomes for local people.

Going forward we now need to aligning our business practices, resources, and people power to support long-term stability of our Charity. This includes

- using data to drive decisions internally and to influence stakeholders externally
- working to ensure we can maintain a living wage for all our employees
- securing the financial resources and organisational infrastructure we need to support efficient and effective delivery of a high-quality programme of work.

To achieve this we have identified five Strategic Pillars that help frame how the organisation will move forward:

- We will maintain and strengthen our core offer by building on our experience and expertise, proven best practices, and continuous learning.
- We will create a high performance culture by delivering meaningful, measurable, and financially sustainable results for the individuals we work with.
- We will remain a key partner across the city through Leadership helping shape public services and policy in our field.
- We will maintain and where appropriate grow our partnership working with others whose values align with ours
- We will ensure excellent governance and be accountable to our wider stakeholders

Finally we will embed Social Value as a core part of our operational programme, measuring the impact of those we aim to help through our social, environmental and economic impact

Strategy in practise

Between 2024 – 2028 Our overarching approach will organise all our business practices and staff efforts towards the outcomes we seek for individuals : housing stability, systems of support, financial stability, and wellness.

Our Strategic plan outlines the operational steps and investments necessary for Inspiring Communities Together to fully implement an outcomes focused approach to programme delivery and operational execution. At the end of the four-year plan, we will have implemented the key initiatives described below to focus on the vision of creating:

Places where everyone has the opportunity to achieve their full potential and participate in making a positive difference to their neighbourhood

Inspiring Communities Together

Trustees' annual report

for the year ended 31 March 2024

Strategic Priority one – Improve our impact through good-quality, high impact delivery programme

- **Invest in people** including providing support and resources for both our internal and external stakeholders.
- **Create opportunities** for individuals to re-engage with learning by providing informal learning activities, skill development, and in work education programs
- **Deliver excellent quality provision** measured through a good content management system enabling tracking of personal journeys

Strategic Priority two – Strengthen business practise to support high performance

- Cultivate a culture of continuous quality improvement and outcome-focused performance management in all areas of the organisation
- Enhance programme coordination by reviewing our current Client Management System (CRM) to ensure it is fit for purpose
- Implement and maintain our digital first programme through reviewing our digital first action plan and addressing areas of improvement required
- Share our knowledge and learning to impact wider policy development
- Ensure financial sustainability by growing public and private funding, maintaining and developing new relationships with supporters and partners, improving grants management practices and increasing opportunities for income generation linked to Inspiring Housing Community Land Trust.

Strategic Priority three – Ensure the organisation is meeting our governance requirements

- **Review Board capacity, capability and effectiveness** including the size of a board going forward
- Ensure excellent risk management systems are in place
- Explore the possibility of change in senior management and how this will impact of the reputation of the Charity
- Maintain oversight of delivery and financial management
- Ensure the board has clarity of purpose and roles including review of board handbook and recruitment process

Structure, governance and management

The trustees are responsible for the strategic management and direction of the organisation. The day to day management is delegated to the Chief Executive. Board meetings are now held 4 times a year and sub- committees and task groups meet as necessary. No sub committee or task groups met during 2023/24.

The organisation is made up of Elected and Nominated Trustees who are nominated by the named organisations as set out within the constitution – currently: Salford City Council and Salford University.

The Board agreed to review the date of their AGM (the AGM originally was set for October each year) to enable members to receive information about what ICT has delivered in a timely manner. The AGM for 2023/2024 will take place in September 2024.

Inspiring Communities Together

Trustees' annual report

for the year ended 31 March 2024

All Trustees are inducted by the Chair and Chief Executive and are provided with a Trustee Manual outlining their roles and responsibilities. Trustees complete a skills audit and are given opportunities for training. The trustees also complete a bi-annual self-assessment tool (VIP dial). As part of the ongoing review of governance all Trustees will also now receive an informal 1-1 session with the Chair each year to discuss their performance.

The Charity is affiliated to the following organisations that provide advice, guidance and support:

- Salford Community and Voluntary Services (Salford CVS)
- Greater Manchester Centre for Voluntary Organisations (GMCVO)
- National Council for Voluntary Organisations (NCVO)
- Locality

The organisation is a charitable incorporated organisation, registered as a charity on 14th May 2014 in England and Wales.

The charity is constituted under a constitution 14th May 2014. The trustees are members of the charity but this entitles them only to voting rights. The trustees have no beneficial interest in the charity. The liability of the trustees in respect of the guarantee is limited to £10 each.

The Charity Trustees have had due regard to the Charity Commission's guidance on public benefit

During 2015/16 it was agreed by the Trustees to remove the financial benefit made to the Chair although the right to make payments to Trustees remains within the constitution. Currently all trustees give their time voluntarily. The Chair however receives a benefit in kind as their own Charities operate from the office space of ICT. Any expenses reclaimed from the charity are set out in note 10 to the accounts.

Related parties and relationships with other organisations

The Board of Trustees role is to ensure a benefit to the community of Greater Manchester and neighbourhood districts. To enable this to happen Trustees are actively encouraged to have a relationship with other organisations operating within the neighbourhoods. All elected trustees are local residents and may from time to time benefit from activity we deliver. Some may have key roles including board membership of other groups and charities within the neighbourhoods we deliver who may benefit from the work being carried out by Inspiring Communities Together including staff time and resources provided by the organisation other than financial.

A Local councillor is allocated a position on the Board of Inspiring Communities Together as the nominated Trustee for Salford City Council. This may from time to time bring into conflict their role within the as a Trustee of ICT and their work within the neighbourhood and Salford City Council. A clear conflict of interest policy has been developed and all Trustees have signed their commitment to this way of working.

A register of interests is held and conflicts of interest are a standard agenda item at all board meetings.

Remuneration policy for key management personnel

The pay of the senior staff is reviewed annually through the appointments and remuneration sub group. As a small Charity the Trustees have taken the decision to benchmark against pay levels set by NJC to reward employees fairly and recognise the diverse needs of the workforce alongside attracting, retaining and training people with the skills needed for the future.

Inspiring Communities Together
Trustees' annual report
for the year ended 31 March 2024

The Board took the decision to become a living wage employer and so all staff salaries have continued to be reviewed to reflect this.

Risk management

The trustees have a risk management strategy which comprises:

- an annual review of the principal risks and uncertainties that the charity faces
- the establishment of policies, systems and procedures to mitigate those risks identified in the annual review
- implementation of procedures designed to minimise or manage any potential impact on the charity should those risks materialise.

The trustees have assessed the major risks to which the charity is exposed, in particular those relating to the operations and finance of the Charity, and are satisfied that systems are in place to mitigate their exposure to major risk.

Inspiring Communities Together
Trustees' annual report
for the year ended 31 March 2024

Statement of responsibilities of the trustees

Law applicable to charities in England and Wales requires the trustees to prepare financial statements for each financial year which give a true and fair view of the charity's financial activities during the period and of its financial position at the end of the period. In preparing financial statements giving a true and fair view, the trustees should follow best practice and:

- Select suitable accounting policies and then apply them consistently
- Observe the methods and principles in the Charities SORP
- Make judgements and estimates that are reasonable and prudent
- State whether applicable UK Accounting Standards and statements of recommended practice have been followed, subject to any material departures disclosed and explained in the financial statements
- Prepare the financial statements on the going concern basis unless it is inappropriate to presume that the charity will continue in operation

The trustees are responsible for keeping proper accounting records that disclose with reasonable accuracy at any time the financial position of the charity and enable them to ensure that the financial statements comply with the Charities Act 2011. They are also responsible for safeguarding the assets of the charity and hence for taking reasonable steps for the prevention and detection of fraud and other irregularities.

The trustees are responsible for the maintenance and integrity of the corporate and financial information included on the charity's website. Legislation in the United Kingdom governing the preparation and dissemination of financial statements may differ from legislation in other jurisdictions.

The trustees' annual report has been approved by the trustees on 21/July/2024 and signed on their behalf by

Mike Duddy

Mike Duddy
Chair

Independent examiner's report
to the trustees of
Inspiring Communities Together

I report to the charity trustees on my examination of the accounts of the company for the year ended 31st March 2024 which are set out on pages 32 to 52.

Responsibilities and basis of report

As the charity trustees of the company (and also its directors for the purposes of company law) you are responsible for the preparation of the accounts in accordance with the requirements of the Companies Act 2006 ('the 2006 Act').

Having satisfied myself that the accounts of the company are not required to be audited under Part 16 of the 2006 Act and are eligible for independent examination, I report in respect of my examination of your company's accounts as carried out under section 145 of the Charities Act 2011 ('the 2011 Act'). In carrying out my examination I have followed the Directions given by the Charity Commission under section 145(5)(b) of the 2011 Act.

Independent examiner's statement

Since the company's gross income exceeded £250,000 your examiner must be a member of a body listed in section 145 of the 2011 Act. I confirm that I am qualified to undertake the examination because I am a member of the Association of Chartered Certified Accountants, which is one of the listed bodies.

I have completed my examination. I confirm that no matters have come to my attention in connection with the examination giving me cause to believe that in any material respect:

1. accounting records were not kept in respect of the company as required by section 386 of the 2006 Act; or
2. the accounts do not accord with those records; or
3. the accounts do not comply with the accounting requirements of section 396 of the 2006 Act other than any requirement that the accounts give a 'true and fair view' which is not a matter considered as part of an independent examination; or
4. the accounts have not been prepared in accordance with the methods and principles of the Statement of Recommended Practice for accounting and reporting by charities applicable to charities preparing their accounts in accordance with the Financial Reporting Standard applicable in the UK and Republic of Ireland (FRS 102).

I have no concerns and have come across no other matters in connection with the examination to which attention should be drawn in this report in order to enable a proper understanding of the accounts to be reached.



Jennifer Daniel FCCA DChA
Slade & Cooper Limited
Beehive Mill, Jersey Street, Manchester, M4 6JG
Date 10/09/2024

Inspiring Communities Together
Statement of Financial Activities
(including Income and Expenditure account)
for the year ended 31 March 2024

	Note	Unrestricted funds £	Restricted funds £	Total funds 2024 £	Total funds 2023 £
Income from:					
Donations and legacies	3	20,366	-	20,366	8,249
Charitable activities:	4	117,614	575,842	693,456	552,879
Investments	5	7,776	-	7,776	1,386
Total income		145,756	575,842	721,598	562,514
Expenditure on:					
Charitable activities:	6	140,843	503,439	644,282	502,174
Total expenditure		140,843	503,439	644,282	502,174
Net income/(expenditure) before net gains/(losses) on investments		4,913	72,403	77,316	60,340
Realised gains/(losses) on investments		-	-	-	-
Unrealised gains/(losses) on investments		(4,763)	-	(4,763)	-
Net income/(expenditure) for the year	8	150	72,403	72,553	60,340
Transfer between funds		(85,338)	85,338	-	-
Net movement in funds for the year		(85,188)	157,741	72,553	60,340
Reconciliation of funds					
Total funds brought forward		614,370	72,055	686,425	626,085
Total funds carried forward		529,182	229,796	758,978	686,425

The statement of financial activities includes all gains and losses recognised in the year.
All income and expenditure derive from continuing activities.
Comparative SOFA is on page 54 of the accounts.

Inspiring Communities Together

Balance sheet as at 31 March 2024

	Note	2024	2023
		£	£
Fixed assets			
Tangible assets	14	30,237	33,730
Investments	15	321,868	319,132
Total fixed assets		352,105	352,862
Current assets			
Debtors	16	55,542	38,992
Cash at bank and in hand	17	399,961	326,990
Total current assets		455,503	365,982
Liabilities			
Creditors: amounts falling due in less than one year	18	(48,630)	(32,419)
Net current assets		406,873	333,563
Total assets less current liabilities		758,978	686,425
Net assets		758,978	686,425
The funds of the charity:			
Restricted income funds	19	229,796	72,055
Unrestricted income funds	20	529,182	614,370
Total charity funds		758,978	686,425

The notes on pages 35 to 52 form part of these accounts.

Approved by the trustees on 21 July /2024 and signed on their behalf by:

Mike Duddy
Mike Duddy (Chair & acting treasurer)

Ruth Potts
Ruth Potts (trustee)

Inspiring Communities Together
Statement of Cash Flows
for the year ending 31 March 2024

	Note	2024 £	2023 £
Cash provided by/(used in) operating activities	22	73,888	(19,244)
<i>Cash flows from investing activities:</i>			
Dividends, interest, and rents from investments		7,776	1,386
Purchase of tangible fixed assets		(1,194)	(13,235)
Proceeds from sale of investments		-	90,000
Management costs in investments		300	300
Purchase of investments		(50,000)	(50,000)
Cash provided by/(used in) investing activities		(43,118)	28,451
Increase/(decrease) in cash and cash equivalents in the year		30,770	9,207
Cash and cash equivalents at the beginning of the year		326,990	327,984
Cash and cash equivalents at the end of the year		357,760	337,191
Represented in the balance sheet by:			
Cash at bank and in hand		399,961	326,990
Cash held by investment broker		-	10,201
		399,961	337,191

Inspiring Communities Together

Notes to the accounts for the year ended 31 March 2024

1 Accounting policies

The principal accounting policies adopted, judgments and key sources of estimation uncertainty in the preparation of the financial statements are as follows:

a Basis of preparation

The financial statements have been prepared in accordance with Accounting and Reporting by Charities: Statement of Recommended Practice applicable to charities preparing their accounts in accordance with the Financial Reporting Standard applicable in the UK and Republic of Ireland (FRS 102), second edition - October 2019 (Charities SORP (FRS 102)), the Financial Reporting Standard applicable in the UK and Republic of Ireland (FRS 102) and the Companies Act 2006 and UK Generally Accepted Accounting Practice.

The accounts (financial statements) have been prepared to give a 'true and fair' view and have departed from the Charities (Accounts and Reports) Regulations 2008 only to the extent required to provide a 'true and fair view'. This departure has involved following Accounting and Reporting by Charities: Statement of Recommended Practice applicable to charities preparing their accounts in accordance with the Financial Reporting Standard applicable in the UK and Republic of Ireland (FRS 102) issued on 16 July 2014 rather than the Accounting and Reporting by Charities: Statement of Recommended Practice effective from 1 April 2005 which has since been withdrawn.

Inspiring Communities Together meets the definition of a public benefit entity under FRS102. Assets and liabilities are initially recognised at historical cost or transaction value unless otherwise stated in the relevant accounting policy note.

b Preparation of the accounts on a going concern basis

The trustees consider that there are no material uncertainties about the charitable company's ability to continue as a going concern.

The trustees have made no key judgments which have a significant effect on the accounts.

The trustees do not consider that there are any sources of estimation uncertainty at the reporting date that have a significant risk of causing a material adjustment to the carrying amount of assets and liabilities within the next reporting period.

Inspiring Communities Together

Notes to the accounts for the year ended 31 March 2024 (continued)

c Income

Income is recognised when the charity has entitlement to the funds, any performance conditions attached to the item(s) of income have been met, it is probable that the income will be received and the amount can be measured reliably.

Income from government and other grants, whether 'capital' grants or 'revenue' grants, is recognised when the charity has entitlement to the funds, any performance conditions attached to the grants have been met, it is probable that the income will be received and the amount can be measured reliably and is not deferred.

For legacies, entitlement is taken as the earlier of the date on which either: the charity is aware that probate has been granted, the estate has been finalised and notification has been made by the executor(s) to the charity that a distribution will be made, or when a distribution is received from the estate. Receipt of a legacy, in whole or in part, is only considered probable when the amount can be measured reliably and the charity has been notified of the executor's intention to make a distribution. Where legacies have been notified to the charity, or the charity is aware of the granting of probate, and the criteria for income recognition have not been met, then the legacy is treated as a contingent asset and disclosed if material.

Income received in advance of a provision of a specified service is deferred until the criteria for income recognition are met.

d Donated services and facilities

Donated professional services and donated facilities are recognised as income when the charity has control over the item, any conditions associated with the donated item have been met, the receipt of economic benefit from the use by the charity of the item is probable and that economic benefit can be measured reliably. In accordance with the Charities SORP (FRS 102), general volunteer time is not recognised; refer to the trustees' annual report for more information about their contribution.

On receipt, donated professional services and donated facilities are recognised on the basis of the value of the gift to the charity which is the amount the charity would have been willing to pay to obtain services or facilities of equivalent economic benefit on the open market; a corresponding amount is then recognised in expenditure in the period of receipt.

e Interest receivable

Interest on funds held on deposit is included when receivable and the amount can be measured reliably by the charity; this is normally upon notification of the interest paid or payable by the Bank.

Inspiring Communities Together

Notes to the accounts for the year ended 31 March 2024 (continued)

f Fund accounting

Unrestricted funds are available to spend on activities that further any of the purposes of charity.

Designated funds are unrestricted funds of the charity which the trustees have decided at their discretion to set aside to use for a specific purpose.

Restricted funds are donations which the donor has specified are to be solely used for particular areas of the charity’s work or for specific projects being undertaken by the charity.

g Expenditure and irrecoverable VAT

Expenditure is recognised once there is a legal or constructive obligation to make a payment to a third party, it is probable that settlement will be required and the amount of the obligation can be measured reliably. Expenditure is classified under the following activity headings:

- Expenditure on charitable activities includes the costs of projects undertaken to further the purposes of the charity and their associated support costs.

Irrecoverable VAT is charged as a cost against the activity for which the expenditure was incurred.

h Allocation of support costs

Support costs are those functions that assist the work of the charity but do not directly undertake charitable activities. Support costs include back office costs, finance, personnel, payroll and governance costs which support the charity's programmes and activities. These costs have been allocated between cost of raising funds and expenditure on charitable activities. The bases on which support costs have been allocated are set out in note 6.

i Tangible fixed assets

Individual fixed assets costing £1,000 or more are capitalised at cost and are depreciated

Outdoor equipment	10%
Computer equipment	33%

Inspiring Communities Together

Notes to the accounts for the year ended 31 March 2024 (continued)

j Fixed asset investments

Investments are a form of basic financial instrument and are initially recognised at their transaction value and subsequently measured at their fair value as at the balance sheet date using the closing quoted market price. The statement of financial activities includes the net gains and losses arising on revaluation and disposals throughout the year.

The Charity does not acquire put options, derivatives or other complex financial instruments.

The main form of financial risk faced by the charity is that of volatility in equity markets and investment markets due to wider economic conditions, the attitude of investors to investment risk, and changes in sentiment concerning equities and within particular sectors or sub sectors.

k Debtors

Trade and other debtors are recognised at the settlement amount due after any trade discount offered. Prepayments are valued at the amount prepaid net of any trade discounts due.

l Cash at bank and in hand

Cash at bank and cash in hand includes cash and short term highly liquid investments with a short maturity of three months or less from the date of acquisition or opening of the deposit or similar account.

m Creditors and provisions

Creditors and provisions are recognised where the charity has a present obligation resulting from a past event that will probably result in the transfer of funds to a third party and the amount due to settle the obligation can be measured or estimated reliably. Creditors and provisions are normally recognised at their settlement amount after allowing for any trade discounts due.

n Financial instruments

The charity only has financial assets and financial liabilities of a kind that qualify as basic financial instruments. Basic financial instruments are initially recognised at transaction value and subsequently measured at their settlement value with the exception of bank loans which are subsequently measured at amortised cost using the effective interest method.

Inspiring Communities Together

Notes to the accounts for the year ended 31 March 2024 (continued)

o Pensions

Employees of the charity are entitled to join a defined contribution ‘money purchase’ scheme. The charity’s contribution is restricted to the contributions disclosed in note 11. There were no outstanding contributions at the year end. The costs of the defined contribution scheme are included in note 8.

The money purchase plan is managed by NEST and the plan invests the contributions made by the employee and employer in an investment fund to build up over the term of the plan a pension fund which is then converted into a pension upon the employee’s normal retirement year age when eligible for a state pension. The total expense ratio of the plan is 0.3% and this is deducted from the investment fund annually. The trust has no liability beyond making its contributions and paying across the deductions for the employee’s contributions. There were no contributions outstanding at the year-end.

2 Legal status of the charity

The charity is a charitable incorporated organisation, registered as a charity in England & Wales.

3 Income from donations and legacies

Current reporting period	Unrestricted £	Restricted £	Total 2024 £
Donations	20,366	-	20,366
Total	20,366	-	20,366
<i>Previous reporting period</i>	<i>Unrestricted £</i>	<i>Restricted £</i>	<i>Total 2023 £</i>
<i>Kickstart</i>	-	8,249	8,249
Total	-	8,249	8,249

Inspiring Communities Together

Notes to the accounts for the year ended 31 March 2024 (continued)

4 Income from charitable activities

Current reporting period	Unrestricted £	Restricted £	Total 2024 £
Community Support and Development			
Childcare	113,252	-	113,252
DWP	-	2,832	2,832
GMCA	-	34,918	34,918
Langworthy	-	2,756	2,756
Salford City Council-Age Friendly	-	338,805	338,805
Salford City Council-Annuity	-	90,000	90,000
Salford City Council-Kickstart	-	1,009	1,009
Salford City Council-Langworthy	-	8,250	8,250
Salford CVS-Age Friendly	-	7,746	7,746
Social Prescribing	-	48,727	48,727
Tech and Tea	-	3,749	3,749
Trafford General Hospital	-	12,545	12,545
University of Salford	-	6,198	6,198
Workers' Educational Association	-	17,590	17,590
Other income	4,362	717	5,079
Total	117,614	575,842	693,456

Previous reporting period	Unrestricted £	Restricted £	Total 2023 £
Community Support and Development			
Childcare	108,794	-	108,794
GMCA	-	8,192	8,192
Langworthy	-	11,024	11,024
Salford City Council	-	84,701	84,701
Salford City Council-Annuity	-	90,000	90,000
Salford CVS	-	34,452	34,452
Salford CVS-Age Friendly	-	44,250	44,250
Social Prescribing	-	45,000	45,000
Tech and Tea	-	6,602	6,602
Third Sector Consortium	-	80,250	80,250
University of Salford	-	12,184	12,184
Veolia Environmental Trust	-	16,138	16,138
Other income	4,430	6,862	11,292
Total	113,224	439,655	552,879

Inspiring Communities Together

Notes to the accounts for the year ended 31 March 2024 (continued)

5	Investment income			
	Current reporting period	Unrestricted £	Restricted £	2024 £
	Income from bank deposits	666	-	666
	Dividends received	7,110	-	7,110
		<hr/>	<hr/>	<hr/>
		7,776	-	7,776
		<hr/>	<hr/>	<hr/>
	Previous reporting period	Unrestricted £	Restricted £	2023 £
	Income from bank deposits	1,386	-	1,386
		<hr/>	<hr/>	<hr/>
		1,386	-	1,386
		<hr/>	<hr/>	<hr/>
6	Analysis of expenditure on charitable activities			
	Current reporting period		Total 2024 £	Total 2023
	Staff costs		398,079	352,831
	Project Costs		138,041	503
	Training		4,732	4,446
	Marketing		2,360	13,582
	Premises		19,000	19,000
	Running costs		52,746	16,057
	Meetings & Events		577	-
	Insurance		4,702	4,366
	Equipment		5,131	27,554
	Other expenditure		-	334
	Depreciation		4,687	4,448
	Community Activities		8,241	54,271
	Governance costs (see note 7)		5,986	4,782
			<hr/>	<hr/>
			644,282	502,174
			<hr/>	<hr/>
			2024 £	2023 £
	Restricted expenditure		503,439	437,157
	Unrestricted expenditure		140,843	65,017
			<hr/>	<hr/>
			644,282	502,174
			<hr/>	<hr/>

Inspiring Communities Together

Notes to the accounts for the year ended 31 March 2024 (continued)

7 Analysis of governance and support costs

Current reporting period	Basis of apportionment	Governance £	Total 2024 £
Accountancy services	Governance	5,986	5,986
		<hr/>	<hr/>
		5,986	5,986
		<hr/>	<hr/>
<i>Previous reporting period</i>	<i>Basis of apportionment</i>	<i>Governance £</i>	<i>Total 2023 £</i>
<i>Accountancy services</i>	<i>Governance</i>	<i>4,594</i>	<i>4,594</i>
<i>Legal and professional</i>	<i>Governance</i>	<i>188</i>	<i>188</i>
		<hr/>	<hr/>
		<i>4,782</i>	<i>4,782</i>
		<hr/>	<hr/>

8 Net income/(expenditure) for the year

This is stated after charging/(crediting):	2024 £	2023 £
Depreciation	4,687	4,448
Auditor's remuneration - accountancy fees	1,953	1,365
Auditor's remuneration - bookkeeping fees	2,373	-
Independent examiner's fee	662	475
	<hr/>	<hr/>

Inspiring Communities Together

Notes to the accounts for the year ended 31 March 2024 (continued)

9 Staff costs

Staff costs during the year were as follows:

	2024 £	2023 £
Wages and salaries	361,929	325,599
Social security costs	27,892	21,413
Pension costs	8,258	5,819
	<hr/> 398,079	<hr/> 352,831
	<hr/> <hr/>	<hr/> <hr/>

No employees has employee benefits in excess of £60,000 (2023: Nil).

The average number of staff employed during the period was 19 (2023: 21).

The average full time equivalent number of staff employed during the period was 14 (2023: 15).

The key management personnel (KMP) comprise the trustees, Chief Executive Officer, Age Well Programme Manager and Child and Families Programme Manager, Marketing and Comms Manager (start date July 2023) and Trainee Programme Manager (People and Place).

The total employee benefits of KMP were £111,260 (2023: £131,876).

10 Trustee remuneration and expenses, and related party transactions

Neither the management committee nor any persons connected with them received any remuneration or reimbursed expenses during the year (2023: Nil).

No members of the management committee received travel and subsistence expenses during the year. (2023: £nil).

Aggregate donations from related parties, including wholly owed subsidiary Inspiring Housing Community Land Trust, were £20,366 (2023: £nil).

There are no donations from related parties which are outside the normal course of business and no restricted donations from related parties.

No trustee or other person related to the charity had any personal interest in any contract or transaction entered into by the charity, including guarantees, during the year (2023: nil).

Inspiring Communities Together

Notes to the accounts for the year ended 31 March 2024 (continued)

11 Related party transactions

The charity has one wholly owned subsidiary:-

- Inspiring Housing Community Land Trust, a community benefit society, registration number 8335R with FCA.

Inspiring Housing Community Land Trust

	2024 £	2023 £
Comprising of the following;		
Assets	40,127	52,106
Liabilities	(6,487)	(15,243)
Share Capital	-	-
Turnover	38,973	38,972
Expenses	42,142	22,475
Profit/(Loss)	(3,169)	16,497

12 Government grants

The government grants recognised in the accounts were as follows:

	2024 £	2023 £
Department for Work and Pensions	2,832	-
Salford City Council (Annuity)	90,000	90,000
Salford City Council	348,064	84,701
Workers' Educational Association	17,590	-
	<hr/>	<hr/>
	458,486	174,701
	<hr/>	<hr/>

There were no unfulfilled conditions and contingencies against these grants.

13 Corporation tax

The charity is exempt from tax on income and gains falling within Chapter 3 of Part 11 of the Corporation Tax Act 2010 or Section 256 of the Taxation of Chargeable Gains Act 1992 to the extent that these are applied to its charitable objects. No tax charges have arisen in the charity.

Inspiring Communities Together

Notes to the accounts for the year ended 31 March 2024 (continued)

14 Fixed assets: tangible assets

	Outdoor equipment £	Furniture and Fittings	Computer equipment £	Total £
Cost				
At 1 April 2023	35,478	-	2,700	38,178
Additions	-	1,194	-	1,194
Disposals	-	-	-	-
At 31 March 2024	35,478	1,194	2,700	39,372
Depreciation				
At 1 April 2023	3,548	-	900	4,448
Charge for the year	3,548	239	900	4,687
Disposals	-	-	-	-
At 31 March 2024	7,096	239	1,800	9,135
Net book value				
At 31 March 2024	28,382	955	900	30,237
<i>At 31 March 2023</i>	<i>31,930</i>	<i>-</i>	<i>1,800</i>	<i>33,730</i>

Inspiring Communities Together

Notes to the accounts for the year ended 31 March 2024 (continued)

15 Investments

	2024 £	2023 £
Market value at the start of the year	319,132	349,231
Add: additions to investments at cost	7,499	49,700
Disposals at carrying value	-	(90,000)
Add net gain/(loss) on revaluation	(4,763)	-
	<hr/>	<hr/>
	321,868	308,931
Cash held by investment broker pending reinvestment	-	10,201
	<hr/>	<hr/>
Market value at the end of the year	321,868	319,132
	<hr/> <hr/>	<hr/> <hr/>
Investments at fair value comprised:		
Equities	316,637	208,168
Fixed Term deposit	-	109,814
Cash held within the investment portfolio	5,231	1,150
	<hr/>	<hr/>
	321,868	319,132
	<hr/> <hr/>	<hr/> <hr/>

16 Debtors

	2024 £	2023 £
Grants/contracts receivable	-	16,138
Other debtors	50,258	13,108
Prepayments and accrued income	5,050	9,746
Receivable from wholly owned subsidiary	234	
	<hr/>	<hr/>
	55,542	38,992
	<hr/> <hr/>	<hr/> <hr/>

17 Cash at bank and in hand

	2024 £	2023 £
Cash at bank and on hand	399,961	326,990
	<hr/>	<hr/>
	399,961	326,990
	<hr/> <hr/>	<hr/> <hr/>

Inspiring Communities Together

Notes to the accounts for the year ended 31 March 2024 (continued)

18 Creditors: amounts falling due within one year

	2024 £	2023 £
Grants received in advance	1,574	2,756
Other creditors and accruals	40,876	29,663
Taxation and social security costs	6,180	-
	<hr/>	<hr/>
	48,630	32,419
	<hr/> <hr/>	<hr/> <hr/>

19 Analysis of movements in restricted funds

Current reporting period	Balance at 1 April 2023 £	Income £	Expenditure £	Transfers £	Balance at 31 March 2024 £
Age Friendly	35,526	407,414	(319,301)	80,175	203,814
Food Matters	1,704	-	-	(1,704)	-
Kickstart	-	1,009	(4,635)	3,626	-
Langworthy Annuity	-	11,006	(17,557)	6,551	-
Learning Programme	-	17,590	-	-	17,590
Live Well Postcode Lottery	2,659	-	(133)	(2,526)	-
Salford City Council	3,487	-	-	(3,487)	-
Salford City Council Annuity	(47,630)	90,096	(121,857)	79,391	-
Social Prescribing	(379)	48,727	(39,956)	-	8,392
Tech & Tea	56,723	-	-	(56,723)	-
Tech & Tea (participants contribution)	21,806	-	-	(21,806)	-
Wellbeing Stay in Touch	(1,841)	-	-	1,841	-
	<hr/>	<hr/>	<hr/>	<hr/>	<hr/>
Total	72,055	575,842	(503,439)	85,338	229,796
	<hr/> <hr/>	<hr/> <hr/>	<hr/> <hr/>	<hr/> <hr/>	<hr/> <hr/>

Inspiring Communities Together

Notes to the accounts for the year ended 31 March 2024 (continued)

19 Analysis of movements in restricted funds (continued)

Previous reporting period	Balance at 1 April 2022	Income	Expenditure	Transfers	Balance at 31 March 2023
	£	£	£	£	£
Age Friendly	3,130	149,427	(139,430)	22,399	35,526
Community Learning	(192)	-	-	192	-
Food Matters	1,704	-	-	-	1,704
Kickstart	(1,460)	8,249	(8,565)	1,776	-
Langworthy Annuity	-	11,024	(8,166)	(2,858)	-
Live Well Postcode Lottery	4,165	46	(1,552)	-	2,659
Riverbank Park	(9,555)	16,138	-	(6,583)	-
Salford City Council	3,487	-	-	-	3,487
Salford City Council Annuity	-	96,716	(147,204)	2,858	(47,630)
Social Prescribing	-	45,000	(45,379)	-	(379)
Tech & Tea	49,440	102,750	(73,068)	(22,399)	56,723
Tech & Tea (participants contribution)	15,204	6,602	-	-	21,806
Wellbeing Stay in Touch	-	11,952	(13,793)	-	(1,841)
Total	65,923	447,904	(437,157)	(4,615)	72,055

Name of restricted fund Description, nature and purposes of the fund

Age Friendly – Contract funded by Salford City Council to deliver a preventative programme of activity across Salford which enables people to age well.

Food Matters – Learning programme which supports people to gain knowledge and skills in catering (project now finished)

Kickstart – Government funded scheme to support young people gain short term employment support to enable them to improve their chances of gaining permanent employment

Langworth Annuity – Funded provided by Salford City Council as a legacy from the regeneration of the neighbourhood to support environmental activities in the area.

Learning Programme – Grant funding to deliver a learning programme to support people gain confidence and practical skills to enable them to move into paid work or further learning

Live well post code lottery – grant to support the delivery of green and grow activity to improve health and wellbeing through environmental projects

Inspiring Communities Together

Notes to the accounts for the year ended 31 March 2024 (continued)

19 Analysis of movements in restricted funds (continued)

Name of restricted fund	Description, nature and purposes of the fund
	Salford City Council is an annuity which is allocated to be spend on activities in the Charlestown and Lower Kersal Area.
	Social Prescribing is a wellbeing intervention programme delivered in Swinton working with neighbourhood health practitioners
	Tech and tea is low level digital skills programme delivered in Chalk and surrounding districts for older people. Transferred to Age Friendle as no longer a separate project.
	Tech and Tea (participants contribution) – Payment made by participants as a contribution to the cost of a tablet as part of tech and tea programme. Transferred to Age Friendly as no longer a separate project.
	Wellbeing stay in touch – grant to support telephone support provision during covid
	Deficits in restricted funds will be covered by future payments.

Inspiring Communities Together

Notes to the accounts for the year ended 31 March 2024 (continued)

20 Analysis of movement in unrestricted funds

Current reporting period	Balance at 1 April 2023 £	Income £	Expenditure £	Transfers £	As at 31 March 2024 £
General fund Langworthy	604,815 9,555	140,993 -	(140,843) -	(85,338) -	519,627 9,555
	614,370	140,993	(140,843)	(85,338)	529,182
Previous reporting period	Balance at 1 April 2022 £	Income £	Expenditure £	Transfers £	As at 31 March 2023 £
General fund Langworthy	550,607 9,555	114,610 -	(65,017) -	4,615 -	604,815 9,555
	560,162	114,610	(65,017)	4,615	614,370

Name of unrestricted fund	Description, nature and purposes of the fund
General fund Transfer to restricted	The free reserves after allowing for all designated funds. In line with our core mission to benefit the residents of Charlestown and Lower Kersal (CHALK) the Annuity is the starting point for this to be achieved. All other unrestricted income will in the first instance be allocated to support our work in CHALK. The remaining unrestricted income will support other project delivery whilst we test new ways of work and also support the commitment to ensure we achieve our reserves requirements.
Langworthy	To complete work in the Seedly and Langworthy Area

Inspiring Communities Together

Notes to the accounts for the year ended 31 March 2024 (continued)

21 Analysis of net assets between funds

Current reporting period	General fund £	Designated funds £	Restricted funds £	Total £
Tangible fixed assets	30,237	-	-	30,237
Fixed asset investments	321,868	-	-	321,868
Net current assets/(liabilities)	167,522	9,555	229,796	406,873
Total	519,627	9,555	229,796	758,978
Previous reporting period	General fund £	Designated funds £	Restricted funds £	Total £
Tangible fixed assets	33,730	-	-	33,730
Fixed asset investments	319,132	-	-	319,132
Net current assets/(liabilities)	251,953	9,555	72,055	333,563
Total	604,815	9,555	72,055	686,425

22 Reconciliation of net movement in funds to net cash flow from operating activities

	2024 £	2023 £
Net income/(expenditure) for the year	72,553	60,340
Adjustments for:		
Depreciation charge	4,687	4,448
Dividends, interest and rents from investments	(7,776)	(1,386)
Decrease/(increase) in debtors	(16,550)	(8,236)
Increase/(decrease) in creditors	16,211	(74,410)
Net cash provided by/(used in) operating	73,888	(19,244)

Inspiring Communities Together

Notes to the accounts for the year ended 31 March 2024 (continued)

**23 Prior year Statement of Financial Activities
(including Income and Expenditure account)**

	Unrestricted funds £	Restricted funds £	Total funds 2023 £	Total funds 2022 £
Income from:				
Donations and legacies	-	8,249	8,249	71,716
Charitable activities:	113,224	439,655	552,879	536,672
Investments	1,386	-	1,386	4,818
Total income	114,610	447,904	562,514	613,206
Expenditure on:				
Charitable activities:	65,017	437,157	502,174	602,801
Total expenditure	65,017	437,157	502,174	602,801
Net income/(expenditure) before net gains/(losses) on investments	49,593	10,747	60,340	10,405
Realised gains/(losses) on investments	-	-	-	-
Unrealised gains/(losses) on investments	-	-	-	(8,508)
Net income/(expenditure) for the year	49,593	10,747	60,340	1,897
Transfer between funds	4,615	(4,615)	-	-
Net movement in funds for the year	54,208	6,132	60,340	1,897
Reconciliation of funds				
Total funds brought forward	560,162	65,923	626,085	624,188
Total funds carried forward	614,370	72,055	686,425	626,085

The statement of financial activities includes all gains and losses recognised in the year.

All income and expenditure derive from continuing activities.