



1 April 2023 – 31 March 2024

ANNUAL REPORT



Winchester Go LD

CONTENTS

Section 1 – An overview of Winchester Go LD	3
Section 2 – Governance	
Structure and people	4
Chair's report	7
Section 3 – Our Activities and Achievements	
Activities Overview	8
Section 3 - Our Finances	
Independent Examiner's statement	14
Financial statements	15
Section 4 – Our other important information	
Acknowledgements	16
How you can help	18
Contact us	20

Our mission

Winchester Go LD's (Go LD) mission it to:

- Empower members with the confidence, choice and control they need to set their own goals.
- Enable people with learning disabilities to learn, develop, and strengthen their skills and capabilities.
- Work with our members to build a collective voice and improve understanding of the lived experience of people with learning disabilities.
- Work with our members, their families, local service providers and the wider community to inspire more effective and inclusive practice.

Our vision

Go LD's vision is an ambitious, but achievable one. It is to ensure all our members are:

"Living life to the full, with the choices and independence that they want"

Our Objects

Winchester Go LD is a Charitable Incorporated Organization which was registered with the Charity Commission in March 2014. It is governed by its Constitution and the objects are to help people with a learning disability, who are resident in Winchester and the surrounding area, as well as their families, dependents or carers by:

- a) promoting inclusion for the public benefit and preventing people with a learning disability from being excluded.
- b) providing or assisting in the provision of services for people with a learning disability.
- c) to enable them to achieve their potential.
- d) provide information, signposting, listening and support (one to one and in groups).
- e) provide resources for the development of services to promote daily living, education, training, work readiness and employment.
- f) provide resources for the development of recreation, sports and leisure activities.
- g) promote good practice to enable people with learning disabilities and their families to have a "voice" at local, county and national level.
- h) work in partnership with others to fill any identified gaps in provision, which could benefit people with a learning disability, their families, dependents or carers.

Our Values

We look to act in accordance with our values in all the work we accomplish.

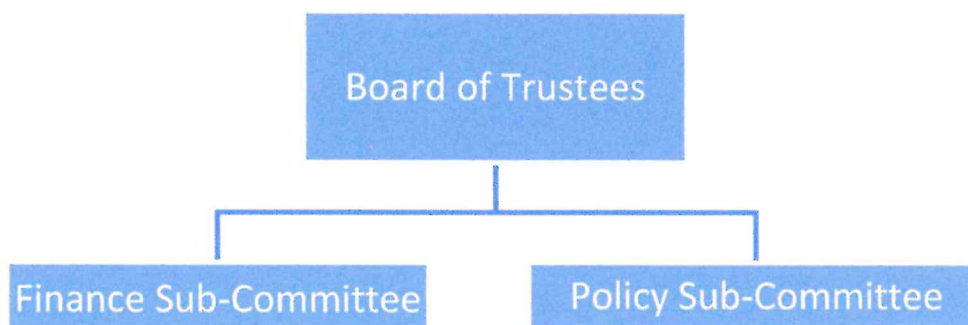
Our values are:

Integrity
Equality and Inclusivity
Collaborative
High Standards
Fun and Enjoyment
Aspirational
Reflective

Governance

Winchester Go LD is a Charitable Incorporated Organisation (CIO) with the charity number 1156536.

Winchester Go LD strategy and governance is overseen by a Board of Trustees that meet quarterly throughout the year. Winchester Go LD also has two formal sub-committees of the Board that support on Finance and Policies.



Our People

Winchester Go LD is grateful to have the support of our Patron, Lady Portal:

I couldn't be more passionate about Go LD; "Living Life to the Full" is the aim and with sensitive guidance, delivered with care and respect, the members' lives are clearly greatly enriched.

We all hope for friends and joy in our lives; Go LD members need that little bit of extra support to give them the confidence to navigate life, belong to friendship-groups, and generally flourish.

The laughter at Go LD events never fails to be a tonic. I always enjoy being with so many cheerful people who are living life to the full – thanks to the dedicated staff and wonderful volunteers at Go LD.



Lady Portal (Louisa) MBE, DL

"I couldn't be more passionate about Go LD; "Living Life to the Full" is the aim and with sensitive guidance, delivered with care and respect, the members' lives are clearly greatly enriched."

Winchester Go LD operations are delivered by our staff team, with 5 members of staff throughout the year. Winchester Go LD staff are involved in the delivery of much of our work and are by far the most valuable asset within the organisation.

The challenges of recruitment have meant that payroll spend this year is under budget at £119,368, compared with a budgeted spend of £145,000.

- Total staff numbers: 5
- Total staff costs: £122,874
- Total staff costs as percentage of overall expenditure: 80%



*"I like Go LD
because I like the
social side and the
activities and the
staff.*

*They are the best
charity"*

Winchester Go LD
member

Winchester Go LD has a volunteer Board of Trustees which comprises of over 50% independent Trustees. The Trustees help set the strategy for Winchester Go LD, make decisions and provide oversight of Winchester Go LD's activities.

The Trustees for the period during the Annual Report:

- Jamie Guerrier (Co-Chair and then Chair from February 2024)
- Shelley Hewlitt (Co-Chair until resigned in February 2024)
- Marjon Zoon (Trustee)
- Rozmin Parpia (Trustee)
- Laura Surridge (Trustee and Member of Policy Sub-Committee. Appointed July 2023)
- Steve Ayling (Trustee and Member of Policy Sub-Committee)
- Mark Chapman (Trustee and Member of Finance Sub-Committee)
- Rob Silk (Treasurer and Member of Finance Sub-Committee)
- Simon Fountain (Trustee and Member Policy Sub-Committee. Appointed April 2023)



"Being a Trustee at Winchester Go LD has been a fantastic experience.

There are challenges, but they fall away the second you get to spend time with the members, they're infectious.

The Para PBs is now a highlight of the year for me".

Simon Fountain, Trustee

Chair's Report

As we gather to reflect on the past year at Winchester Go LD, I am filled with a sense of appreciation for the incredible efforts of our staff team, the unwavering support of our volunteers and supporters, and the remarkable achievements of the members.

Our staff team are tireless and have been nothing short of exceptional. Their passion, dedication, and expertise have been instrumental in driving our mission forward and making a real impact on everyday lives of our members.

To our volunteers and supporters, I extend my heartfelt thanks for your invaluable contributions. Your generosity, time, and belief Go LD is a cornerstone of our success. This support enabled us to reach achieve the services and activities detailed within this report.

I also want to take a moment to express my sincere gratitude to Shelley Hewlitt who stepped down from the position of Co-Chair to welcome the wonderful Jack as part of their family. We wish Shelley all the best in this new chapter of her life and look forward to welcoming her back in the future.

Despite the challenges posed by external factors such as the Hampshire County Council cutbacks, cuts to vital services and a difficult fundraising environment, we remain steadfast in our commitment to achieving Go LD's mission. The team and our supporters have done a fantastic job at ensuring the community and funders support our mission.

We are excited about the opportunities that lie ahead and are confident that with your continued support, we can continue to make a positive impact in our community.

In closing, I want to express my deepest gratitude to each and every one of you who has contributed to our journey so far. Your support, dedication, and belief in Winchester Go LD have been the driving force behind our successes this year, and we are truly grateful.



Jamie Guerrier
Chair, Winchester Go LD

"I want to express my deepest gratitude to each and every one of you who has contributed to our journey so far.

Your support, dedication, and belief in Winchester Go LD have been the driving force behind our successes this year, and we are truly grateful."

Jamie Guerrier

Chair, Winchester Go LD

SECTION 3

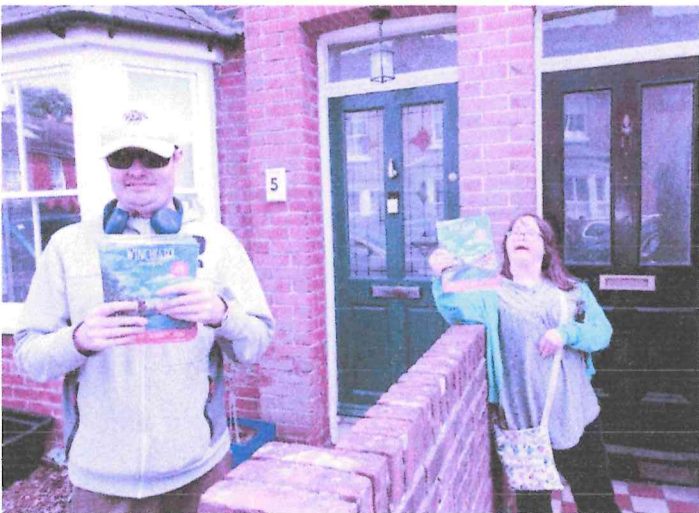
OUR ACTIVITIES & ACHIEVEMENTS

The team, supported by our volunteers, have worked to deliver a variety of services and activities throughout the year. There are too many to mention, but a few are detailed below.

Advocacy

Led by Sharron Clements, Winchester Go LD gives our members a voice, particularly when confronted with difficult choices and decisions involving Adult Social Care, NHS Health Teams, families and support providers.

We see the consequences of troubled health and social care systems and we challenge the lack of joined up working.



Our insight and experience provide valuable input in helping our members realise and achieve their goals. We play a pivotal role in achieving positive outcomes for members in professionals' meetings and support network (circle) meetings.

The Winchester Go LD team spend approximately 25-35 hours a week on delivering our advocacy services.

Walk and Talk

Walk and talks continued this year and they are a valuable and popular service to our members.

Through our staff and dedicated volunteer team we delivered 320 Walk and Talks to 35 members in the year 2023-2024.

Go Socials

Winchester Go LD's monthly 'Go Social' events continue to provide our members, volunteers and staff the opportunity to get to know each other and take part in a variety of activities.

Go Social activities this year have included our ever popular pub trips, bowling, bingo night, a historic Winchester walk and a disco.

Winchester Magazine

Winchester Go LD members developed and increased their role as part of the

Membership

Active Membership has remained steady this year.

This is due to a cap on numbers to ensure we can provide effective support to each of our members.

Active Members 2024: 120

Active Members 2023: 120

Active Members 2022: 103

Active Members 2021: 90

delivery crew for Winchester Magazine. This year, 21 members have taken part posting 2,675 magazines in the Fulford area. This has proven to be a popular project with our members and contributes towards our member generated income.

The magazine delivery provides engagement and inclusion in the community, a sense of purpose, physical activity, teamwork, fun and a great platform to build more local connections

Summer Trips

The staff and volunteer team delivered a successful and popular program this summer, catering for our members' range of budgets and interests.



55 of our members took part in one or more of the 18 different summer activities we offered.

Member Generated Income

Our members have generated £4,410 of income through the sale of their member designed merchandise, Christmas cards and the smoothie bike.

The popular fruit and vegetable range of tea towels, oven gloves and aprons were created as part of our healthy eating module in the wellbeing project. Staff member, Emma Snagge, worked with our members to create these beautiful and stylish designs

.

.

We have had success selling our member merchandise at local fairs, community events and via our online shop. New to us this year was the chance to sell our merchandise at the famous Winchester Christmas Market! We are also delighted that Cobbs at Winchester stock our tea towels, aprons and oven gloves to sell in the farm shop.

Our online activities continue to be popular with Winchester Go LD members – on average we engage with 20 Winchester Go LD members via Zoom each week. They not only provide important social contact for members who are unable to access our face-to-face activities, but also provide a way to maintain and develop IT skills and confidence.

Regular fitness groups and the Para PBs

Adults with learning disabilities are more at risk to many physical and mental health conditions than the general population and at Winchester Go LD we encourage our members to be active. Our weekly activities Saturday Circuits, Thursday Fit Class and Wednesday Tai Chi are important ways to keep moving and for our members to spend social time with friends.

In September 2023 we held our 11th annual Paralympic Personal Best event at the Everyone Active Sport and Leisure Park and University of Winchester Athletics track alongside our partner Winchester City Council, Everyone Active and the University of Winchester.

This event has continued to grow and has become a key fixture in the diary of the local learning disability community, extending beyond Winchester and welcoming an amazing 206 participants.

The Paralympic Personal Bests offers a fantastic way for Winchester Go LD to connect with other local learning disability groups.

It provides an opportunity for members to be introduced to local sports groups (such as disability football, parkrun and super 1s cricket), seeking to address physical and mental health inequalities faced by the LD community.

We are grateful in particular for funding from Simplyhealth of £5,000.

Highlights

2675 copies of Winchester Magazine delivered.

55 number of members taking part on summer trips.

206 of Para PB attendees.

£4410 total raised by our members through income generation.

320 hours walked on Walk and Talks.

626 number of activities delivered by staff and volunteers.

342 smoothies sold

In addition to our Go LD volunteers, we also welcomed staff from our corporate partners at Santander, Osborne Property Services (now Cardo Group), Brewin Dolphin, Strategic Solutions and Simplyhealth to take part in the day.



Fundraising Events

Our Fundraising Committee have had another successful year.

The Garden and Plant Fair in May 2023 generated significant income for Winchester Go LD. We are very grateful to Cobbs at Winchester for their continued support of the Garden and Plant Fair and to Brewin Dolphin and Sparsholt College.

As ever our venue was provided by Katie and Simon Brown.

We're incredibly grateful for their continued support of this important fundraising event.

*"Thank you
for your
amazing
work."*

*[Member X]
absolutely
loves
attending the
various
activities you
offer."*



Awards

Winchester Go LD's and the staff's success has been recognised with numerous nominations and awards throughout the year. These include:

- Winchester Business Excellence Awards: Social Enterprise and Charity 2023 (June 2023) – Winner
- WAGS (Women Achieving Greatness in Social Care) Awards – Betty Chadwick (November 2023)
- Lifetime achievement (finalist) - Janet Chierchia
- Inspirational Volunteer (finalist) - Marjon Zoon and Evie Wood
- Community Rail Network 2023 Stations in Bloom - Silver Award (November 2023)
- National Learning Disabilities & Autism Awards 2023 - The Oliver McGowan Mandatory Training Award - Highly Commended – Betty Chadwick (July 2023)

"Betty is the deserving recipient high commendation for this award. Her dedication to improving the lives of people with autism and learning disabilities through innovative programmes has been recognised by the judges. Betty demonstrates exceptional knowledge whilst highlighting the importance of safeguarding training to all involved with the charity."

Congratulations to everyone involved!



SECTION 4

OUR FINANCES

RESERVES POLICY

To sustain its activities and in line with the Charities Commission's recommendations, Winchester Go LD has designated a base reserve of unrestricted funds of **six months operating costs**.

The unrestricted funds above the reserve can be spent by the Trustees to meet its aims and objectives. Restricted income funds are only spent only for the particular purpose set out by the donor.

INDEPENDENT EXAMINER'S REPORT

I report to the Trustees on my examination of the accounts of Winchester Go LD for the year ended 31 March 2024.

Responsibility and Basis of the Report

As the charity Trustees of Winchester Go LD you are responsible for the preparation of the accounts in accordance with the requirements of the Charities Act 2011 (the 'Act').

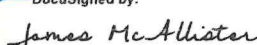
I report in respect of my examination of Winchester Go LD's accounts carried out under section 145 of the Act and in carrying out my examination I have followed all the applicable Directions given by the Charity Commission under section 145(5) of the Act.

Independent Examiner's Statement

I have completed my examination. I can confirm that no material matters have come to my attention in connection with the Winchester Go LD giving me cause to believe in any material respect:

1. accounting records were not kept in respect of Winchester Go LD as required under section 130 of the Act; or
2. the accounts do not accord with those records.

I have no concerns and have come across no other matters in connection with the examination to which attention should be drawn in this report in order to enable a proper understanding of the accounts to be reached.

DocuSigned by:

 7E3A9980274949A...

James McAllister

FINANCIAL STATEMENTS

Winchester Go LD Income and Expenditure Account For the year ended 31 March 2024

	2024				2023			
	Restricted Funds (£)	Unrestricted Funds (£)	Not Specified (£)	TOTAL (£)	Restricted Funds (£)	Unrestricted Funds (£)	Not Specified (£)	TOTAL (£)
Income								
Bank Interest	0	858		858	0	108		108
Community Events and Groups	0	18,556		18,556	0	4,451		4,451
Corporate Donations	150	2,219		2,369	0	1,345		1,345
Donations	0	13,550		13,550	0	11,942		11,942
Donations (Gift Aid)	0	13,283		13,283	0	0		0
Fundraising Committee	0	18,843		18,843	0	21,685		21,685
Gift Aid Reclaim	0	6,008		6,008	0	0		0
Member Activities	600	9,263		9,863	0	6,348		6,348
Member Merchandise	0	4,410		4,410	0	6,042		6,042
Online Commission	0	130		130	0	175		175
Other	500	21		521	0	0		0
Payroll Giving	0	200		200	0	579		579
Trust/Grant income	41,396	20,276		61,672	38,842	44,580		83,422
Uncategorised Income	0	0	117	117	0	0		0
Total Receipts	42,646	107,618	117	150,382	38,842	97,255	0	136,097
Expenditures								
Advertising/Promotional	56	0		56	0	0		0
Contracted Staff	1,700	1,806		3,506	3,400	0		3,400
Event Fundraising	0	3,170		3,170	0	0		0
Fundraising Committee Costs	0	3,401		3,401	0	1,161		1,161
Insurances	75	348		423	0	0		0
IT, Software, Hosting and Broadband	895	666		1,561	0	0		0
Member Activities costs	5,011	3,057		8,068	4,940	5,403		10,343
Member Merchandise costs	0	2,058		2,058	0	2,226		2,226
Misc (adjustment)	0	2		2	0	0		0
Office Equipment and Stationary	578	377		955	0	0		0
Total Payroll Expenditures	32,341	87,027		119,368	13,066	90,222		103,288
Rent or Lease of Buildings	2,276	6,742		9,018	0	8,224		8,224
Representation	0	210		210	0	0		0
Staff Training and Travel	463	554		1,017	180	465		645
Uncategorised Expense	0	380	117	497	84	4,522		4,606
Total Expenditures	43,396	109,797	117	153,310	21,670	112,223	0	133,893
Excess / (Deficit) of Income over Expenditure	(750)	(2,178)	0	(2,928)	17,172	(14,968)	0	2,204

Note - several categories have been combined, split, or renamed from the previous year

Balance Sheet as at 31 March 2024

	2024				2023			
	Restricted Funds (£)	Unrestricted Funds (£)	Not Specified (£)	TOTAL (£)	Restricted Funds (£)	Unrestricted Funds (£)	Not Specified (£)	TOTAL (£)
Current assets								
Bank accounts	20,497	119,500	0	139,997	25,747	117,178	0	142,925
Income and Expenditure Account								
Balance brought forward 1 April	25,747	117,178	0	142,925	13,076	127,645	0	140,721
Excess / (Deficit) of Income over Expenditure	(750)	(2,178)	0	(2,928)	17,172	(14,698)	0	2,204
Transfer between funds	(4,500)	4,500	0	0	(4,500)	4,500	0	0
Balance carried forward 31 March	20,497	119,500	0	139,997	25,747	117,178	0	142,925

Jamie Guerrier, Chair

Name
Position: Trustee

SECTION 5

ACKNOWLEDGEMENTS

Volunteers

Your hard work and dedication have been nothing short of amazing. You've shown up with smiles on your faces and a willingness to help in any way you can, whether by supporting our members directly, supporting our activities and events, or being there when we needed an extra hand.

It's clear that Winchester Go LD wouldn't be what it is without the passion and commitment you all bring to the table. You've made a real impact on our members, helping them feel more connected, supported, and valued.

Thank you to each and every one of you.

Fundraising Committee

We are enormously grateful to our wonderful fundraising committee for their continued support in volunteering their energy, enthusiasm and no small dose of hard work in raising much needed funds for Winchester Go LD.

This year alone they have raised an incredible £18,834.

Thank you, Ros Nell, Ros Francis, Janine Kiely Guerrier, Juliet Hawkes, Liza Hobbs, Claire Penny, Kate Price, Lucy de Albuquerque, Elisabeth Colquhoun, Marjorie Huntley and Jo Tyler.

Corporate & community partners

Thanks to all our funders for your generous support in 2023-24



"It is difficult to find the words to tell you how impressed I was with you and the other people who help at Winchester Go LD."

The variety of people is incredible, and you have everyone trying the same thing.

I loved the story-telling session.

I was very, very impressed."

Winchester Go LD Donor.

The Members

Last in our acknowledgments, but certainly not least.

To our wonderful members.

You are the reason Winchester Go LD is what it is.

You are the reason our staff, volunteers and supporters involve themselves with us.

You are the reason they keep coming back.

Your infectious smiles.

Your determination to have fun and enjoy life.

Your enthusiasm for mischief.

Your ability to cope with whatever life throws at you.

Thank you for making Winchester Go LD so special.



SECTION 6

HOW TO GET INVOLVED

With recent cutbacks from Local Authority's and changes in the fundraising landscape, Go LD has increased challenges at a time when the needs of our members have never been greater. Your donations and support are essential to help us continue providing programs and support for our members, empowering them to lead fulfilling lives.

We invite you to consider how you can contribute to our mission, ensuring that Go LD remains here for those who rely on us.

Make a donation

Winchester Go LD cannot provide the support and services it does without raising sufficient income.

Please consider donating to Winchester Go LD. We have a variety of ways you can do this, by visiting: <https://winchestergold.org.uk/supporting-us/#Givemoney>

Leave a gift in your will

Legacy giving is an incredibly effective way of ensuring vital funds for the work that Winchester Go LD does for our members. We welcome any discussion from those who may be interested in having Winchester Go LD as a beneficiary within their will and we can be contacted using the details below.

Support an event or fundraising activity

We are always keen to hear from those who would like to support Winchester Go LD and there are a variety of ways this can be done, these include:

- Taking part in a challenge event, like a sponsored walk or run.
- Shop our member designed items and buy tickets to our events:
<https://winchester-go-ld.myshopify.com/>
- Signing up to easyfundraising online and selecting Winchester Go LD:
<https://www.easyfundraising.org.uk/>

Volunteer

Without our wonderful volunteers, Winchester Go LD simply wouldn't be what it is today. Winchester Go LD have an amazing group of volunteers whose kind and dedicated support enables us to do more activities.

If you are interested in volunteering, please contact Winchester Go LD at:
info@winchestergold.org.uk or complete the online form found at:
<https://winchestergold.org.uk/supporting-us/>

:

Become a Corporate Partner

Corporate partnerships play a vital role in the sustainability and growth of small local charities like ours. They provide essential financial support and offer opportunities for increased visibility, community engagement, and shared impact.

Ways Corporate Partners Can Get Involved:

1. **Payroll Giving:** Encourage employees to participate in payroll giving programs, where they can make regular donations to our charity directly from their salary. This simple and tax-efficient way of giving can provide a steady stream of support for our programs and initiatives.
2. **Charity of the Year:** Partner with us as your designated Charity of the Year. This long-term commitment allows for deeper engagement, fundraising opportunities, and increased visibility for your company's support of the local community.
3. **Donations:** Consider making a one-time or recurring donation to support our programs and services. Your financial contribution can make a significant impact and help us continue our vital work.
4. **Employee Engagement:** Encourage employees to volunteer their time and skills to support our organisation. Whether through hands-on volunteering, pro bono services, or skills-based volunteering, their contributions can make a meaningful difference.
5. **Staff Training:** Engage with us to provide staff training sessions on topics related to our cause or sector. This enhances employee skills and knowledge, and also deepens understanding of the issues the Learning Disability community face when engaging with organisations.

By forging strong partnerships with corporate partners, we can work together to create a more sustainable and inclusive future for local Learning Disability community.

If you'd like to discuss ways to get involved, please contact us at:

info@winchestergold.org.uk



A business partnership can be a great way to connect with the local community and build strong relationships.

Keep up to date

Subscribe to our newsletter and comms:

https://winchestergold.org.uk/about_us/#ContactUs

Follow and engage with us on social media:

X: https://x.com/WinchesterGo_LD

Facebook: <https://www.facebook.com/winchestergold.org.uk/>

CONTACT US

Winchester Go LD
The Arc
Jewry Street
Winchester
SO23 8SB

Phone:
01962 600281

Email:
info@winchestergold.org.uk