

THE CHELLINGTON CENTRE

England & Wales · Charity number 1156511

Details

Status Registered

Legal form Charitable company

Company number [08794342](#)

Registered 2014-04-02

Register [View on the Charity Commission register](#)

Contact

Address The Chellington Centre
St. Nicholas Church
Felmersham Road
Carlton
Bedford
MK43 7NA

Phone 01234720726

Email admin@chellington.org

Website www.chellington.org

Activities

Objects: TO FURTHER OR BENEFIT THE RESIDENTS OF BEDFORDSHIRE AND THE NEIGHBOURHOOD AND THE NEIGHBOURHOOD, WITHOUT DISTINCTION OF SEX, SEXUAL ORIENTATION, RACE OR OF POLITICAL, RELIGIOUS OR OTHER OPINIONS BY ASSOCIATING TOGETHER THE SAID RESIDENTS AND THE LOCAL AUTHORITIES, VOLUNTARY AND OTHER ORGANISATIONS IN A COMMON EFFORT TO ADVANCE EDUCATION AND TO PROVIDE FACILITIES IN THE INTERESTS OF SOCIAL WELFARE FOR RECREATION LEISURE TIME OCCUPATION WITH THE OBJECTIVE OF IMPROVING THE CONDITIONS OF LIFE FOR THE RESIDENTS. IN FURTHERANCE OF THESE OBJECTS BUT NOT OTHERWISE, THE TRUSTEES SHALL HAVE POWER: TO ESTABLISH OR SECURE THE ESTABLISHMENT OF A COMMUNITY CENTRE AND TO MAINTAIN OR MANAGE OR CO-OPERATE WITH ANY STATUTORY AUTHORITY IN THE MAINTENANCE AND MANAGEMENT OF SUCH A CENTRE FOR ACTIVITIES PROMOTED BY THE CHARITY IN FURTHERANCE OF THE ABOVE OBJECTS. · TO ADVANCE IN LIFE AND YOUNG PEOPLE THROUGH: (A) THE PROVISION OF RECREATIONAL AND LEISURE TIME ACTIVITIES PROVIDED IN THE INTEREST OF SOCIAL WELFARE, DESIGNED TO IMPROVE THEIR CONDITIONS OF LIFE; (B) PROVIDING SUPPORT AND ACTIVITIES WHICH DEVELOP THEIR SKILLS, CAPACITIES AND CAPABILITIES TO ENABLE THEM TO PARTICIPATE IN SOCIETY AS MATURE AND RESPONSIBLE INDIVIDUALS.

Activities: The Chellington Centre is a residential & day use centre for groups of young people to engage in their programmes of education & development providing opportunities to build self- confidence & celebrate life. We have developed relationships with various charities, church and other youth groups as well as schools for the provision of outside the classroom activities and residential experiences.

Classification

- **How:** Provides Buildings/facilities/open Space, Provides Services
- **What:** Education/training, Recreation
- **Who:** Children/young People, Other Charities Or Voluntary Bodies

Geography

- Bedford

Finances

Period end	Income	Expenditure	Assets	Employees
2025-12-31	£182,397	£174,630	-	-
2024-12-31	£269,330	£167,130	-	-
2023-12-31	£139,078	£149,514	-	-
2022-12-31	£157,380	£114,952	-	-
2021-12-31	£265,414	£101,460	-	-
2020-12-31	£142,402	£98,356	-	-

Trustees

Name	Role	Appointed
Darius Faitakis		2025-01-24
Edward Charles Chamberlayne		2022-06-17
Felicity Claire Heseltine		2025-01-14
Helen Chapman		2023-01-12
James Charles Tusting		2019-05-07
Matthew Tuohy		2024-07-22
RACHEL MARY LESITER		2014-01-09

THE CHELLINGTON CENTRE

England & Wales - Charity number 1156511

Accounts



FINANCIAL STATEMENTS AND ANNUAL REPORT FOR THE YEAR ENDED 31 DECEMBER 2025

CONTENTS

Contents	1
Reference and Administrative Details of The Charity, its Trustees and Advisers	2
2025 Impact Report	3
2026 Key Priorities	9
Treasurer's Report	10
Governance Report	12
Independent Examiner's Report to the Members of The Chellington Centre	15
Income and Expenditure Account	17
Balance Sheet	18
Notes to the Financial Statements	19
1. Accounting policies	19
2. Incoming resources from charitable activities	21
3. Charitable activities (including Governance costs)	22
4. Net movement in unrestricted funds	22
5. Governance costs	23
6. Trustees' remuneration	23
7. Staff remuneration and numbers	24
8. Tangible fixed assets	24
9. Creditors: amounts falling due within one year	25
10. Analysis of net assets between funds	25
11. Movements in funds	26

REFERENCE AND ADMINISTRATIVE DETAILS OF THE CHARITY, ITS TRUSTEES AND ADVISERS

Company number	08794342 (England and Wales)
Charity number	1156511 (England and Wales)
Board of trustees (Directors)	CHAPMAN, Helen CHAMBERLAYNE, Edward (Treasurer) FAITIKIS, Darius Emmanouil (appointed 24 January 2025) HESELTINE, Felicity (appointed 14 January 2025) LESITER, Rachel (Chair) TOUHY, Matthew TUSTING, James
Independent examiner	Tim Sullivan Field Sullivan 9 Hare & Billet Road Blackheath SE3 ORB
Bankers	Barclays Bank Plc 8 Market Street Wellingborough Northamptonshire NN8 1AP CCLA One Angel Lane London EC4R 3AB
Registered address	The Chellington Centre Felmersham Road Carlton Bedford MK43 7NA
Website	http://www.chellington.org

2025 IMPACT REPORT

Transforming young lives through residential outdoor learning



1. Executive Summary

2025 has been a year of strong growth, increased reach and operational resilience for the Chellington Centre. The Centre welcomed high numbers of visiting groups, particularly during the summer term, while also launching new curriculum-linked educational programmes designed to enhance the residential learning experience.

Despite the loss of key founding figures, the Charity has continued to strengthen community relationships, expand its reach to disadvantaged groups through the Bursary Fund, and secure a healthy pipeline of bookings for 2026 and beyond.

Chellington is a place where young people can step away from the pressures of everyday life, connect with nature, develop independence and confidence, and experience the benefits of shared learning and adventure.

2. Our Mission and Objectives

The Chellington Centre Charity provides an inspirational rural environment where young people can develop their personal potential.

Our core objectives include:

Promoting Social Welfare: Offering facilities for recreation and residential experiences that enhance wellbeing.

Accessibility: Ensuring the Centre is accessible to all via the Chellington Bursary Fund, regardless of financial hardship or disability.

Advancing Education: Providing curriculum-linked activities that encourage engagement with the environment.

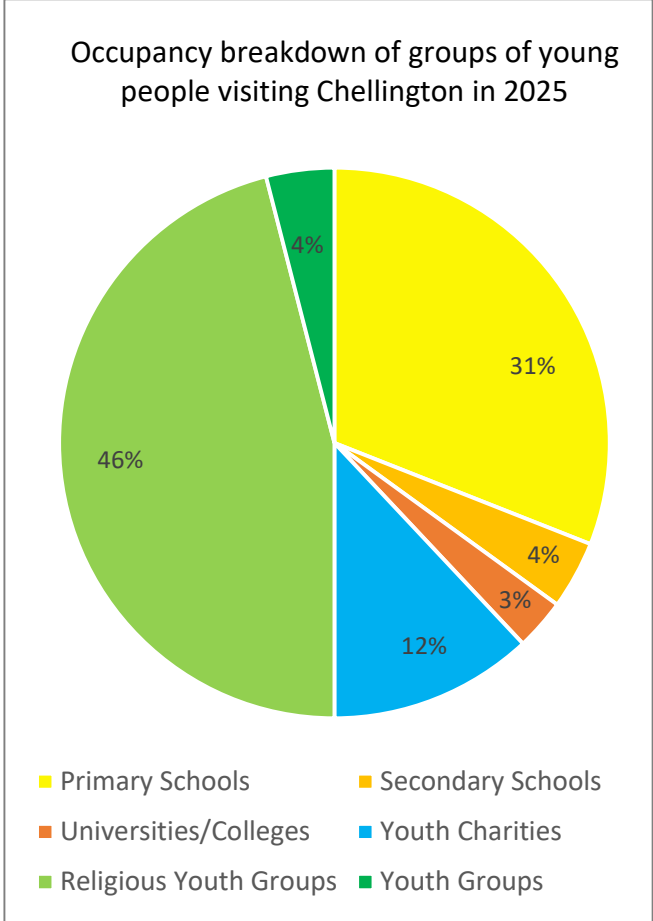
3. Our Impact

The Centre experienced high occupancy levels in 2025, particularly during the academic summer term.

Visiting groups included primary and secondary schools, youth charities and organisations, religious youth groups, and community organisations from across the region and beyond.

2025 at a glance

- 3,000+** Residential and day visitors
- 650+** Young people supported through bursary funding
- 12** Schools and youth organisations received bursaries
- 3 new** Curriculum-linked education programmes developed
- 1 new** Programme Manager supporting educational development



“ *When I visited Chellington for the first time I was awed by the location and views. Our children live in a deprived area of Luton; they don't see nature, and few have gardens. At Chellington they are able to see the vastness of the countryside and to know there is much more available to them than is found in their current world. They can climb trees, walk across a field of cows and horses, sit round a campfire. It sparks their imagination and widens their horizons and creates an invaluable aspirational experience.* ”

St Matthews Primary, Luton

4. Voices from the Field: Impact Stories

I. Beyond the City Limits

For the children of a primary school in Bedford - a school serving a community experiencing significant social and economic deprivation - their Chellington residential provided a powerful and transformative experience.

- **Developing Independence**
Many of the 28 students had never stayed away from home or cooked for themselves before this visit.
- **Connecting with Nature**
For all but one pupil, it was their first time seeing sheep in a natural environment.
- **Lasting Impression**
The visit concluded with 27 handwritten thank-you letters from the children, describing their excitement at exploring open spaces, flying kites and experiencing the countryside.



II. The "Only Holiday"

A primary school, located in Bletchley, serves a community where more than 60% of pupils are eligible for free school meals.

- **A Rare Opportunity**
For many of these Year 6 pupils, the residential visit to Chellington represents the "only holiday" they have experienced.
- **Health and Wellbeing**
School staff noted the children's "astounded gratitude" at simply having space to run freely, breathe fresh air, and enjoy the green surroundings.
- **Financial Lifeline**
The Headteacher emphasised that tightening school budgets mean that visits like this would not be possible without support from the Chellington Bursary Fund.

5. Educational Programme Highlights



With external funding support, the Centre launched the first phase of a three-year initiative to develop high-quality, low-cost, curriculum-linked activity programmes for visiting schools and youth organisations.

Claire Bassett, our part-time Programme Manager (two days per week), led the development of ready-to-use (“off-the-peg”) programmes, created in consultation with teachers and designed to be delivered by visiting school staff during residential stays and day visits, supported by our team where required. Each programme includes fully resourced activity plans, risk assessments, guidance notes and equipment.

Programmes developed in 2025:

- **Anglo-Saxons vs. Vikings:** An immersive history re-enactment where children craft their own helmets, decorate shields, train as warriors and re-enact battle whilst learning through the exploration of archaeological and historical evidence, Old English poetry, Norse language and drama.
- **Geography Fieldwork:** For GCSE Geographers, practical fieldwork techniques to explore and measure the physical processes at work along the Great River Ouse, how people on the flood plain are affected by these processes (flooding), and how their activities impact upon the river (pollution and management). For A Level Geographers, practical fieldwork methodologies to explore and measure the local hydrological and carbon cycles as well as the factors affecting micro-climates and biodiversity in next-door Harrold Odell Country Park.
- **Map Explorers:** An interactive series of games and challenges to develop navigation skills where children become skilled in using OS maps, compasses and orienteering equipment. These activities use modelling with LEGO, as well as adventures in the local landscape.

This project has enabled the charity to move into more active engagement with visiting schools and youth groups. This represents a significant shift in our role—from primarily providing accommodation and space, to actively leading and supporting learning and development during residential visits.

Crucially, these experiences are delivered at low cost, ensuring they are accessible to children who might otherwise miss out on outdoor and residential learning opportunities. By providing structured, ready-to-use curriculum-linked programmes, the project has removed practical, financial and capacity barriers that previously prevented some schools and groups from accessing outdoor and residential experiences.

Disadvantaged young people are the primary beneficiaries. Those visiting Chellington now have access to engaging, curriculum-linked activities that encourage learning, teamwork and connection with nature within a supportive rural setting.

6. The Chellington Bursary Fund

The Bursary Fund remains central to the Charity's commitment to accessibility and social inclusion. Bursary Awards can cover up to 40% of accommodation costs, enabling schools and youth groups serving disadvantaged communities to visit the Centre.

Strategic Priority

Fundraising for the Bursary remains a key priority to ensure that financial barriers do not prevent young people from experiencing residential learning.

Legacy of Support

In 2025, the fund received a significant boost from Finlay Tusting's extraordinary cycle-around-the-world fundraising challenge in memory of his grandfather, John Tusting.

Direct Impact

In 2025, 12 organisations received bursary support, enabling over 650 children and young people to benefit from outdoor and residential experiences at Chellington.



“ Many of our children come from large families, often with two or three generations sharing a house. They come from hugely disadvantaged homes and going away overnight is something they can only dream of! The bursary makes this an affordable trip; it makes this trip possible! **”**

Head Teacher at Queen's Park Primary School, Bedford

7. Community & Volunteer Engagement



The Chellington Centre continues to benefit from the generosity, skills and enthusiasm of volunteers, whose contribution plays a vital role in supporting the charity's work and strengthening our connection with the local community. Volunteers bring a wealth of practical experience, creativity and local knowledge, helping to enhance both the facilities and the experience of visiting groups.

Campfire Design and Build

Volunteer Mike generously gave his time and expertise to redesign and oversee the upgrade of the Centre's campfire area.

Generous Donation of Oak Logs

We are extremely grateful to the Burleigh Estate for donating the stunning oak logs used to create seating around the campfire.

Strategic Visits

In September, the Centre was honoured to welcome Camilla King, High Sheriff of Bedfordshire, who visited to learn more about the Centre's work with disadvantaged schools.

8. Operations & Facilities Management

Debbie Holloway took up the role of Centre Manager during 2025, overseeing the Centre's day-to-day operations and a comprehensive programme of repairs and maintenance across the site.



The Centre made significant investment in maintaining and developing the facilities in 2025. This included improvements to the campfire area, repairs to the chancel roof, important plaster repairs, and the first phase of work to establish a new sensory garden. Alongside these physical improvements, several policies and operational procedures were reviewed and updated. This work supports the development of curriculum-linked activities and helps ensure that the Centre continues to provide safe, well-managed and high-quality experiences for visiting groups.

9. In Memoriam and Thanks

The Charity wishes to record its deep gratitude to John and Jane Tusting and the Venerable Malcolm Lesiter, all of whom passed away recently.

John's vision and dedication over 25 years, together with Jane and Malcolm's unwavering encouragement and support, helped create the foundation upon which this special place now stands. Their legacy lives on in every child who experiences Chellington.

We extend our sincere thanks to Joe Street, a long-time supporter of The Chellington Centre, whose generous legacy gift has made a significant and lasting contribution to our work. We are deeply grateful for both his years of encouragement and his decision to support the Charity in this meaningful way.

We are also extremely grateful to the Carlton Education Trust, the Edith Winifred Hall Trust, and The Wixamtree Trust, whose generous and sustained support has played a vital role in the Centre's development.

Our sincere thanks also go to our neighbours, the Mesney family and Rajinder Moni, for their longstanding goodwill and support of the Centre.

Finally, we extend heartfelt thanks to our volunteers, donors, visitors, staff, trustees, neighbours and friends. Through your commitment, encouragement and generosity, the Chellington Centre continues to thrive, providing life-changing opportunities for young people and their communities.



2026 KEY PRIORITIES

- 1. Strengthening Community Partnerships**
Continue building community relationships that enable life changing experiences at Chellington for disadvantaged young people.
- 2. Expand Outdoor Learning Opportunities**
Continue developing curriculum-linked activities that support experiential learning in the natural environment for outdoor learning experiences.
- 3. Growing the Chellington Bursary Fund**
Increase awareness and fundraising to expand access for schools and youth organisations in need.
- 4. Accreditation and Quality Assurance**
Achieve the Learning Outside the Classroom (LOtC) Quality Badge, recognising the Centre's commitment to high-quality educational provision.
- 5. Strengthening Organisational Resilience**
Continue to strengthen the Centre's operational and financial resilience to ensure a sustainable future and maximise long-term impact.



“ The time at Chellington allows children to forge new friendships, try new things, talk about things they wouldn't normally talk about at school. All these things help the children to develop their self-confidence and encourages them to experience different things. Many of our children do not leave Queens Park so experiencing being in the countryside is often a new concept! ”

Head Teacher at Queen's Park Primary School, Bedford

TREASURER'S REPORT

Going Concern: Trading (unrestricted) account

Trading Activity

Over the year, the charity experienced a 7% increase in booking income compared to 2024 to a record level of £136,848. All this increase was achieved through growth in youth bookings, in accordance with the charity's strategy, with only a small offsetting decrease in non-youth income. When combined with bank interest and unrestricted donations, unrestricted income totalled £141,559.

We continue to manage our operating costs to minimise our cost base wherever possible whilst looking to renew equipment when necessary. The cost of charitable activities over the year was £150,710. Accounting standards require the trustees to include a charge for depreciation of its property assets within the reported cost of its charitable activities. However, since depreciation is not a cash cost and the trustees consider that the Herald Building is unlikely to depreciate in value, the trustees have decided to use the *Net Movement in Unrestricted Funds excluding Depreciation of the Herald Building* as the principal target for budgeting and performance measurement purposes. Excluding £11,252 of depreciation on the Herald Building, the cost of charitable activities was £139,458 resulting in a small surplus on the unrestricted account of £1,523.

Designated Funds

Given the substantial restricted reserves, no additional transfer of funds was made to the Designated Property Fund over the year.

Free Cash

At the end of 2025, available unrestricted and undesignated cash reserves amounted to £53,818 (2024: £50,381.) Free reserves are in line with our target of 3 to 6 months' operating expenditure at around 4 months' expenditure. The trustees remain confident that we are able to maintain operations as a going concern for the foreseeable future.

Capital (restricted) accounts

We received donations to the Bursary Fund of £13,225. £6,741 of this total was raised by Finlay Tusting in sponsorship of his remarkable cycle ride around the world in aid of the Fund. We also received a substantial donation in memory of Fin's grandmother, the late Jane Tusting, who contributed so much to Chellington over so many years. We were also fortunate to continue to receive support from the Carlton Education Trust, which has been a consistent and generous supporter of the Centre. We made awards from the fund of £7,593, continuing to enable disadvantaged children and young people to visit the centre.

We continued to develop our own educational resources programme for schools visiting the centre. We raised £22,472 towards this programme, largely thanks to a generous bequest from the late Robert Street and donations from Co-Op stores. The fund expended £11,810 during the year on the cost of employing the programme manager and developing the physical resources required to run the programme.

2026 Financial Outlook

As of 31 December 2025, we had confirmed bookings for 2026 and beyond to the value of £91,962 (2024: £93,429), against which we held deposits of £41,480 (2024: £36,900). We expect to be able to cover our operating costs without recourse to reserves in 2026.

Our fundraising efforts continue to be focused on raising funds for our bursary fund and the development of educational resources to broaden the range of courses that we are able to provide to schools.

Approved and authorised for issue by the Board of Trustees on 20 May 2026 and signed on their behalf by:



Edward Chamberlayne – Treasurer

“

The accommodation and location were perfect for our overnight stay with our pupils, many of whom were experiencing their first night away from home with anyone outside close family & friends.

Broughton Fields Primary

”

GOVERNANCE REPORT

1. Structure

The Chellington Centre Charity was set up with the singular purpose of supporting and developing the work at the Chellington Centre.

The Charity was established as a registered charity on 2 April 2014 as the Chellington Centre, having been set up and incorporated as a company on 28 November 2013.

The governing document is the Memorandum and Articles of Association dated 21 November 2013, which were adopted by special resolution on the 13 March 2014.

In accordance with the Articles of Association, at least half the number of appointed directors reside within a 15-mile radius of the Chellington Centre.

2. Trustees

We welcomed Fizz Heseltine and Darius Faitakis our Board of Trustees during the year.

3. Mission and Charities Objectives

“Our mission is to provide an inspirational and rural setting for young people to develop their personal potential.”

The Charity's Objects can be summarized as:

The provision, maintenance, organisation and management of The Chellington Centre to:

- 1) Advance education, particularly of the young, and to provide facilities in the interests of social welfare with the objective of improving the conditions of life those using the Centre,
- 2) Develop the physical, mental and spiritual capacities of those in need by reason of youth or financial hardship or another disadvantage, by providing support and activities which develop their skills, capacities and capabilities to enable them to participate in society as mature and responsible individuals.

4. Bursary Fund

In furtherance of the Objects, but not for any other purpose, the Charity has established a bursary fund from which to provide bursaries to make the facilities of the Charity as accessible as possible to as wide a range of groups as possible.

5. Charity Governance Code for Smaller Charities

The Charity's Trustees have adopted the Charity Governance Code for smaller charities:

1. **Organisational purpose** - The board is clear about the charity's aims and ensure that these are being delivered effectively and sustainably.
2. **Leadership** - The board provides strategic leadership in line with the charity's aims and values. Full trustee meetings are held at least quarterly to review financial results, policies and procedures and any issues of governance.
3. **Integrity** - The board acts with integrity, adopting values and creating a culture which help achieve the organisation's charitable purposes. The board is aware of the importance of the public's confidence and trust in charities, and trustees undertake their duties accordingly.
4. **Decision-making, risk and control** - The board makes sure that its decision-making processes are informed, rigorous and timely and that effective delegation, control and risk assessment and management systems are set up and monitored.

The Trustees have assessed the risks that the charity faces. The major risk relates to dependence on a number of key staff and volunteers. Financial risk resulting from a reduction in occupation of the Centre is controlled by close monitoring of advance bookings and adjustment of budgeted spend should this be necessary.

5. **Board effectiveness** - The board works as an effective team, using the appropriate balance of skills, experience, backgrounds and knowledge to make informed decisions.
6. **Diversity** - The board's approach to diversity supports its effectiveness, leadership and decision-making.
7. **Openness and accountability** - The board leads the organisation in being transparent and accountable.

6. Reserves Policy

The Trustees have determined that, given the seasonality of income, it is appropriate that unrestricted and undesignated free cash reserves at year end should be maintained to enable us to cover between three- and six-months' salaries and fixed operating expenditure.

Customer deposits and prepayments are held in a separate bank account until such time as occupancy takes place. Restricted reserves are managed to ensure that they are maintained in separate bank accounts and are only applied for the purposes set out in the grant applications and donations.

7. Trustees' Responsibilities to Prepare Financial Statements

Charity law requires the Trustees to prepare financial statements for each financial year which give a true and fair view of the affairs of the charity and of the deficit or surplus of the charity for that year.

In preparing those financial statements, the Trustees are required to:

- select suitable accounting policies and then apply them consistently,
- observe the methods and principles in the Charities SORP,
- make judgements and estimates that are reasonable and prudent,

- state whether applicable accounting standards have been followed, subject to any material departures disclosed and explained in the financial statements, and
- prepare the financial statements on the ongoing concern basis unless it is inappropriate to presume that the charity will continue in business.

The Trustees are responsible for keeping proper accounting records which disclose with reasonable accuracy at any time the financial position of the charity and to enable them to ensure that the financial statements comply with the Charities Act 2011. They are also responsible for safeguarding the assets of the charity and hence for taking reasonable steps for the prevention and detection of fraud and other irregularities.

8. Independent Examiner

A proposal to reappoint Tim Sullivan as the Independent Examiner will be proposed at our forthcoming AGM and he has expressed a willingness to accept.

9. Approval

Approved and authorised for issue by the Board of Trustees on 20 May 2026 and signed on their behalf by:

A handwritten signature in black ink, appearing to read 'Rachel Lesiter'.

Rachel Lesiter – Chair



INDEPENDENT EXAMINER'S REPORT TO THE TRUSTEES OF THE CHELLINGTON CENTRE LIMITED

I report to the charity trustees (who are also Directors for the purpose of company law) on my examination of the accounts of The Chellington Centre ('the charitable company') for the year ended 31 December 2025 which comprise the Statement of Financial Activities, the Balance Sheet and related notes on pages 19 to 26.

This report is made solely to the charity's trustees, as a body, in accordance with section 145 of the Charities Act 2011. My work has been undertaken so that I might state to the charity's trustees those matters I am required to state to them in this report and for no other purpose. To the fullest extent permitted by law, I do not accept or assume responsibility to anyone other than the charity and the charity's trustees as a body, for my work, for this report, or for the opinions I have formed.

Responsibilities and Basis of Report

As the charity's trustees of The Chellington Centre you are responsible for the preparation of the accounts in accordance with

the requirements of the Companies Act 2006 ('the 2006 Act').

Having satisfied myself that the accounts of The Chellington Centre are not required to be audited under Part 16 of the 2006 Act and are eligible for independent examination, I report in respect of my examination of your charity's accounts as carried out under section 145 of the Charities Act 2011 ('the 2011 Act'). In carrying out my examination I have followed the Directions given by the Charity Commission under section 145(5)(b) of the 2011 Act.

An independent examination does not involve gathering all the evidence that would be required in an audit and consequently does not cover all the matters that an auditor considers in giving their opinion on the financial statements. The planning and conduct of an audit go beyond the limited assurance that an independent examination can provide. Consequently, I express no opinion as to whether the financial statements present a 'true and fair' view and my report is limited to those specific matters set out in the independent examiner's statement.

Independent Examiner's Statement

I have completed my examination. I confirm that no matters have come to my attention in connection with the examination giving me cause to believe:

1. accounting records were not kept in respect of The Chellington Centre as required by section 386 of the 2006 Act; or
2. the accounts do not accord with those records; or
3. the accounts do not comply with the accounting requirements of section 396 of the 2006 Act other than any requirement that the accounts give a 'true and fair view' which is not a matter considered as part of an independent examination; or
4. the accounts have not been prepared in accordance with the methods and principles of the Statement of Recommended Practice for accounting and reporting by charities applicable to charities preparing their accounts in accordance with the Financial Reporting Standard applicable in the UK and Republic of Ireland (FRS 102).

I have no concerns and have come across no other matters in connection with the examination to which attention should be drawn in this report in order to enable a proper understanding of the accounts to be reached.

A handwritten signature in black ink, appearing to read 'Tim Sullivan'.

.....
Tim Sullivan FCA
ICAEW
9 Hare & Billet Road
Blackheath
SE3 0RB

Date 20 May 2026

INCOME & EXPENDITURE ACCOUNT

	Notes	Unrestricted 2025 £	Restricted 2025 £	Total 2025 £	Total 2024 £
Incoming resources from charitable activities:					
Voluntary income		4,712	40,838	45,549	141,390
Bookings income		136,848		136,848	127,940
Total incoming resources	2	141,559	40,838	182,397	269,330
Resources expended					
Fundraising		578	578	1,155	4,043
Charitable activities	3 & 5	150,710	22,764	173,475	163,088
Total resources expended		151,288	23,342	174,630	167,130
Transfers	10				
Net movement in funds	4	-9,729	17,496	7,767	102,200
Reconciliation of funds					
Total funds brought forward		350,109	127,064	477,173	374,973
Total funds carried forward		340,380	144,559	484,939	477,173

All income and expenditures are derived from continuing activities.

All recognised gains and losses are included in the Statement of Financial Activities.

The notes on pages 19 to 26 form part of these financial statements

BALANCE SHEET

	Notes	2025		2024	
		£	£	£	£
Fixed assets					
Tangible fixed assets	8		279,263		293,076
Current assets					
Cash in hand and in bank		251,418		218,215	
Accounts Receivable		1,234		6,620	
Prepayments		813		1,608	
		253,464		226,442	
Creditors: amounts falling due within one year	9	-47,788		-42,346	
Net current assets			205,676		184,097
Net assets			484,939		477,173
Funds					
Unrestricted funds			335,128		345,065
Designated funds			5,252		5,044
Restricted funds			144,559		127,064
Total funds			484,939		477,173

The notes on pages 19 to 26 form part of these financial statements.

For the financial year ended 31 December 2025 the charity was entitled to exemption from audit under section 477 Companies Act 2006. No member of the charity has deposited a notice, pursuant to section 476, requiring an audit of these financial statements under the requirements of the Companies Act 2006.

The directors acknowledge their responsibilities for ensuring that the charity keeps accounting records which comply with section 386 of the Act and for preparing financial statements which give a true and fair view of the state of affairs of the charity as at the end of the financial year and of its profit or loss for the financial year in accordance with the requirements of sections 394 and 395 and which otherwise comply with the requirements of the Companies Act 2006 relating to accounts, so far as applicable to the charity.

These financial statements have been prepared in accordance with the provisions applicable to companies subject to the small companies' regime within Part 15 of the Companies Act 2006.

Approved by the Board and authorised for issue on 20 May 2026

NOTES TO THE FINANCIAL STATEMENTS

1. Accounting Policies

1.1. Accounting convention

The financial statements are prepared in accordance with the Statement of Recommended Practice: Accounting and Reporting by Charities (SORP 2019 – FRS 102 version), applicable accounting standards and the Companies Act 2006. The charity has taken advantage of the Small Entity provisions of FRS 102. The financial statements are presented in Sterling (£).

Statement on going concern

After reviewing the charity's forecasts and projections, the directors have reasonable expectation that the charity has adequate resources to continue in operational existence for the foreseeable future. The charity therefore continues to adopt the going concern basis in preparing its financial statements.

1.2 Company status

The charity is a company limited by guarantee. The directors of the company are the trustees named on page 1. In the event of the charity being wound up, the liability in respect of the guarantee is limited to £1 per member of the charity.

1.3. Incoming resources

Incoming resources represents the total income receivable during the year comprising of donated income and income from events and bookings. All incoming resources are included in the Statement of Financial Activities when the charity is legally entitled to the income and the amount can be quantified with reasonable certainty.

1.4. Expenditure

All expenditure is included on an accruals basis and is inclusive of all VAT, which cannot be reclaimed, and is reported as part of the expenditure to which it relates:

- Charitable expenditure comprises those costs incurred by the charity in the delivery of its activities and services for its beneficiaries. It includes both costs that can be allocated directly to such activities and those costs of an indirect nature necessary to support them.
- Fundraising expenditure comprises those costs incurred by the charity for professional services in relation to the identification of potential funders and the preparation of grant applications in compliance with the Code of Fundraising Practice issued by the independent regulator of charitable fundraising in England, Wales and Northern Ireland.
- Governance costs include those costs associated with meeting the constitutional and statutory requirements of the charity and include the Independent Examiner's fees and costs linked to the strategic management of the charity.
- All costs are allocated directly, as such there are no support costs to apportion.

1.5. Funds

General funds are unrestricted funds which are available for use at the discretion of the Trustees in furtherance of the general objects of the charity and which have not been designated for other purposes.

Designated funds are funds set aside for specific purposes. The aim and use of the designated funds are set out in the notes to the Financial Statements.

Restricted funds are funds, which are to be used in accordance with specific restrictions imposed by the donor. The aim and use of the restricted funds are set out in the notes of the financial statements.

1.6. Tangible fixed assets and depreciation

Capital expenditure on items costing £2,000 or higher are recorded as tangible fixed assets. Tangible fixed assets are stated at cost valuation less depreciation.

Depreciation of equipment is provided on a straight-line basis at rates calculated to write off the cost or valuation less estimated residual of each asset over its expected useful life. Kitchen equipment is depreciated over a three-year useful life; Alarm systems are depreciated over a ten-year useful life; Media equipment is depreciated over a five-year useful life; Camping equipment and Games equipment valued at less than £5,000 is fully depreciated in the year of acquisition. The Herald Building is depreciated on a reducing balance basis at a rate of 4% per annum.

1.7. Pensions

The Charity operates a defined contribution plan for its employees. A defined contribution plan is a pension plan under which the Charity pays fixed contributions into a separate entity. Once the contributions have been paid the Charity has no further payment obligations.

The contributions are recognised as an expense in the Income and Expenditure Account when they fall due. Amounts not paid are shown in accruals as a liability in the Balance Sheet. The assets of the plan are held separately from the Company in independently administered funds.

1.8. Taxation

The Chellington Centre is a registered charity and is not liable to Corporation Tax.

2. Incoming Resources from Charitable Activities

Incoming resources from charitable activities:	Unrestricted	Restricted	Total	Total
	2025	2025	2025	2024
Voluntary Income	£	£	£	£
Donations - Bursary Fund	-	13,225	13,225	9,589
Donations - Educational Programme	-	22,472	22,472	22,943
Trust	-	-	-	100,000
Donation - Site Development	-	-	-	4,188
Donations - General	729	-	729	75
Bank Interest	3,983	5,141	9,124	4,595
	<u>4,712</u>	<u>40,838</u>	<u>45,549</u>	<u>141,390</u>
Bookings income				
Youth bookings	73,929	-	73,929	63,074
Non-youth bookings	62,919	-	62,919	64,866
	<u>136,848</u>	<u>-</u>	<u>136,848</u>	<u>127,940</u>
Total incoming resources	<u>141,559</u>	<u>40,838</u>	<u>182,397</u>	<u>269,330</u>

Donations include associated Gift Aid of £45 (2024 £4,576) received from HMRC during the year.

3. Charitable Activities (including Governance Costs)

Resources expended	Unrestricted/ Designated 2025	Restricted 2025	Total 2025	Total 2024
	£	£	£	£
Fundraising costs				
Professional services	578	578	1,155	4,043
Charitable activities				
Direct costs of bookings	2,042	-	2,042	1,797
Staff & volunteer costs	79,102	-	79,102	72,150
Utilities, rent & rates	21,400	-	21,400	19,071
Insurance & alarms	6,448	-	6,448	5,787
Repairs, maintenance & renewals	20,147	-	20,147	23,117
Administration & marketing	10,320	-	10,320	7,542
Herald Building Depreciation	11,252	-	11,252	11,720
Bursaries	-	7,593	7,593	5,644
Site Development	-	3,361	3,361	10,753
Educational Programme	-	11,810	11,810	5,507
Total cost of charitable activities	150,710	22,764	173,475	163,088
Total cost of resources expended	151,288	23,342	174,630	167,131

4. Net movement in unrestricted funds

Net movement in unrestricted funds:	Unrestricted	Unrestricted
	2025	2024
	£	£
Total incoming resources	141,559	131,583
Total resources expended excluding depreciation on the Herald Building	140,036	132,736
Net movement in unrestricted funds excluding depreciation on the Herald Building	1,523	-1,153
Depreciation on the Herald Building	11,252	11,720
Net movement in unrestricted funds:	-9,729	-12,873

The Trustees set their annual budget based on the expected *Net Movement in Unrestricted Funds excluding Depreciation on the Herald Building*. This reflects the fact that although the trustees are required to depreciate the Herald Building, there is no associated cash cost and they do not expect the value of the building to fall over time.

5. Governance Costs

	2025	2024
	£	£
Independent examiner's remuneration (included in Note 3)	1,180	800
Trustees' expenses	0	0
Total governance costs	1,180	800

6. Trustees' remuneration

The trustees received no remuneration (£2025: £nil) and received no reimbursements (£2024: £nil).

7. Staff Remuneration and numbers

	2025	2024
	£	£
Staff remuneration		
Wages and salaries	79,018	75,049
Pension costs	1,400	2,051
National Insurance	736	-
Total staff remuneration	81,154	77,100

The average number of full and part-time employees during the year were as follows:

	2025	2024
Full time – Centre Manager	1.0	1.0
Part time – Assistant Managers (two)	0.8	1.2
Part time - Programme Manager	0.4	0.2
	2.2	2.4

No employees received emoluments of more than £60,000 per annum.

8. Tangible fixed assets

Tangible fixed assets	Herald Building	Alarm Systems	Camping Equipment	Other Equipment	Total
	£	£	£	£	£
Cost or valuation					
At 1 January 2025	313,583	11,365	3,076	10,438	338,463
Disposals					
Acquisitions					
At 31 December 2025	313,583	11,365	3,076	10,438	338,463
Depreciation					
At 1 January 2025	32,292	3,599	3,076	6,420	45,387
Disposals					
Charge for year	11,252	1,137		1,425	13,813
At 31 December 2025	43,543	4,736	3,076	7,844	59,200
Net book value					
At 31 December 2024	281,292	7,766		4,018	293,076
At 31 December 2025	270,040	6,630		2,593	279,263

9. Creditors: amounts falling due within one year

	2025	2024
Creditors: amounts falling due within one year	£	£
Deferred booking income	41,480	38,521
Accruals	3,922	1,651
Pension payable	659	1,271
Accounts payable	1,021	836
Barclaycard	706	736
Total creditors	47,788	42,347

Deferred income relates to pre-payments for future bookings.

10. Analysis of net assets between funds

Analysis of net assets between funds	Unrestricted Fund	Restricted Funds	Total Funds
	£	£	£
Tangible fixed assets	279,263	0	279,263
Current assets	108,905	144,559	253,464
Current liabilities	-47,788	0	-47,788
Net assets at 31 December 2025	340,380	144,559	484,939
Tangible fixed assets	293,076	0	293,076
Current assets	99,378	127,064	226,442
Current liabilities	-42,346	0	-42,346
Net assets at 31 December 2024	350,109	127,064	477,173

11. Movement in funds

	At 1-Jan- 2025 £	Incoming Resources £	Resources Expended £	Transfers £	At 31-Dec- 2025 £
Unrestricted funds					
General funds	345,065	141,351	151,288	-	335,128
Designated funds	5,044	208		-	5,252
Total Unrestricted funds	350,108	141,559	151,288	-	340,380
Restricted funds					
Bursary	6,360	13,572	7,593	-	12,339
Site Development	104,038	4,748	3,361	-	105,425
Educational Programme	16,666	22,518	12,388	-	26,795
Total restricted funds	127,064	40,838	23,342	-	144,559
Total Funds	477,172	182,397	174,630	-	484,939

Designated fund - The trustees have established a reserve to finance any future major spending that may be required on either of the properties at the Centre.

Bursary fund - The aim of the Chellington Bursary Fund is to make The Chellington Centre as accessible as possible, particularly for young people in areas of deprivation where funding is not easily available for residential activity. In 2025 twelve Bursaries were awarded to a value of £3,700 (2024; ten awards to a value of £3,640). Eight further awards were approved in 2025 to a value of £4,393 for events in 2026. (2024; four awards to a value of £2,004.)

Site Development fund - Restricted funding was raised to upgrade the facilities at The Centre, and this work has been completed. Further restricted funds were donated for expenditure on the Centre's land or buildings or on bursaries.

Educational Programme - Funding has been raised to finance the production and delivery of educational resources to enable more schools to access The Chellington Centre's facilities.

THE CHELLINGTON CENTRE

England & Wales - Charity number 1156511

Accounts



FINANCIAL STATEMENTS AND ANNUAL REPORT FOR THE YEAR ENDED 31 DECEMBER 2024

(Incorporated as a Company Limited by Guarantee and not having a Share Capital)

CONTENTS

Contents	1
Reference and Administrative Details of The Charity, its Trustees and Advisers	2
Strategic Report	3
2024 Highlights	5
2025 Key Priorities	7
Treasurer's Report	11
Going Concern: Trading (unrestricted) account	11
Capital (restricted) accounts	11
2025 Financial Outlook	12
Governance Report	13
Independent Examiner's Report to the Members of The Chellington Centre	16
Income and Expenditure Account	18
Balance Sheet	19
Notes to the Financial Statements	20
1. Accounting policies	20
2. Incoming resources from charitable activities	22
3. Charitable activities (including Governance costs)	23
4. Net movement in unrestricted funds	23
5. Governance costs	24
6. Trustees remuneration	24
7. Staff remuneration and numbers	25
8. Tangible fixed assets	25
9. Creditors: amounts falling due within one year	26
10. Analysis of net assets between funds	26
11. Movements in funds	27

REFERENCE AND ADMINISTRATIVE DETAILS OF THE CHARITY, ITS TRUSTEES AND ADVISERS

Company number	08794342 (England and Wales)
Charity number	1156511 (England and Wales)
Board of trustees (Directors)	CHAPMAN, Helen CHAMBERLAYNE, Edward Charles (Treasurer) LESITER, Rachel Mary (Chair) MIDDLEBROOK, Venerable David John – resigned 2.11.24 SIMPSON, Helen Margaret – resigned 20.2.24 TUOHY Matthew – appointed 22.7.24 TUSTING, James Charles TUSTING, John Robert – deceased 4.5.24
Independent examiner	Field Sullivan Limited 9 Hare & Billet Road Blackheath SE3 0RB
Bankers	Barclays Bank Plc 8 Market Street Wellingborough Northamptonshire NN8 1AP
Registered address	The Chellington Centre Felmersham Road Carlton Bedford MK43 7NA
Website	http://www.chellington.org

STRATEGIC REPORT



The Chellington Centre is an award winning, eco-friendly youth residential retreat - a base for exclusive-use learning, recreation and self-development in a beautiful, rural setting.

It is a place of expedition, inspiration and invigoration, particularly but not exclusively for young people, offering many opportunities to build self-confidence, reflect and celebrate life. A place of transformation.

Every year, we welcome and serve thousands of young people from diverse backgrounds who come to Chellington for residential or day trips with their schools, youth groups, families or through a charity.

We are extremely grateful to the Carlton Education Trust, Edith Winifred Hall Trust and our neighbours - the Mesney family and Rajinder Moni - for their significant and unwavering support over many years. We would like to sincerely thank them and all our friends, visitors, neighbours (young and old), trustees, staff, donors and patrons. Thanks to you all, the Chellington Centre can continue to thrive, supporting young people and their communities.

“

“When I visited Chellington for the first time I was awed by the location and views. Our children live in a deprived area of Luton; they don't see nature, and few have gardens. At Chellington they are able to see the vastness of the countryside and to know there is much more available to them than is found in their current world. They can climb trees, walk across a field of cows and horses, sit round a campfire. It sparks their imagination and widens their horizons and creates an invaluable aspirational experience.”

”

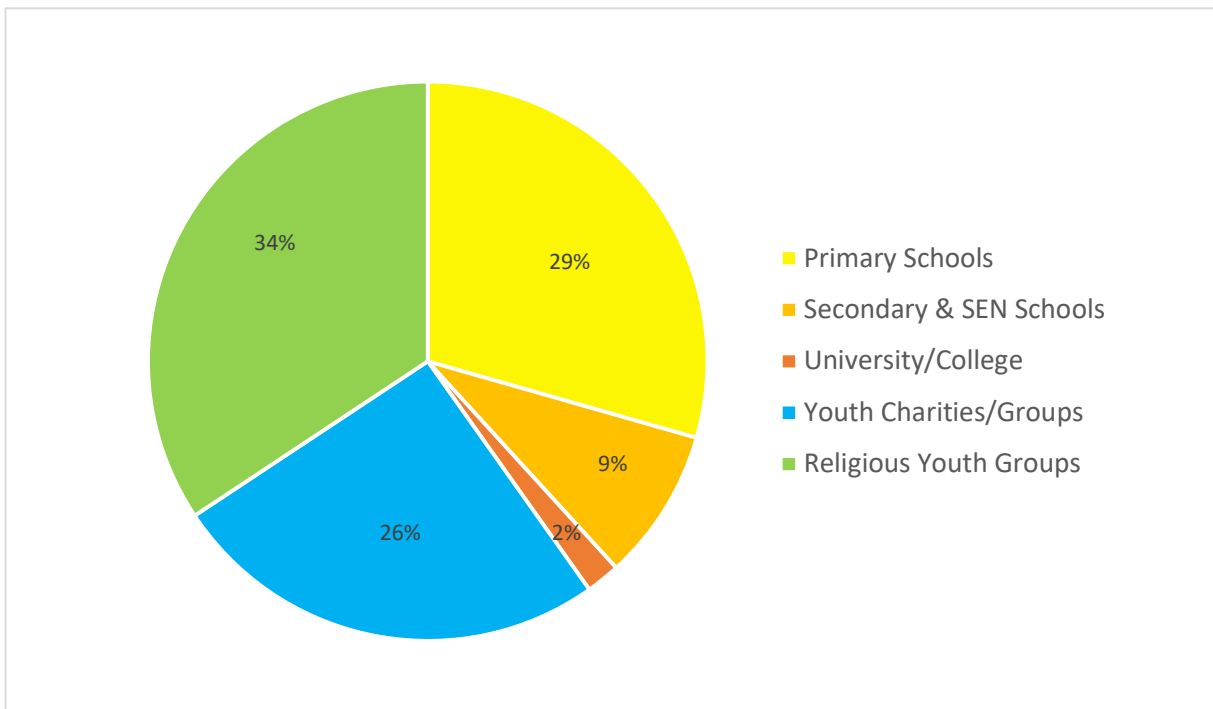
St Matthews Primary, Luton



The Chellington Centre offers overnight accommodation for up to 72 and day trip capacity for 100. Up to 36 can sleep in our dormitory bunkrooms inside the main building with the option to add a further 36 camping in the new Red Kite camping zone. Practically, this means all groups have greater flexibility to choose a mix of accommodation that best suits their needs.

Importantly, we remain committed to welcoming groups of all sizes, big or small, with each group enjoying sole use of the entire site.

Occupancy breakdown of groups of young people visiting Chellington in 2024



2024 HIGHLIGHTS



Schools and youth groups returning for another year and welcoming new groups of young people experiencing Chellington for the first time



New initiative to develop activity resources for schools and youth groups thanks to funding support, with recruitment of Programme Manager and brilliant first delivery of Anglo-Saxons meet the Vikings



Completion of the Red Kite camping facility to accommodate 36 campers including new benches, outdoor sink and camping crockery



Significant investment in repairs and renewals including replacement of all mattresses and a much-welcomed dishwasher

We would like to play tribute to John Tusting, who sadly died in May 2024.

John was the driving force behind Chellington for 25 years and founder of The Chellington Centre Charity. His unwavering commitment and passion for Chellington made it what it is today. He will be sorely missed by all that had the fortune of knowing him. His spirit lives on in life at Chellington.

See John's description of the incredible journey to achieving the vision for the Chellington Centre as we know it today: ["Chellington" by John Tusting](#)



John Tusting receiving the Order of Saint Alban award from Bishop Alan Smith. The Order of Saint Alban was established by the Bishop of St Albans in 2015 to honour lay people who have demonstrated outstanding commitment, dedication and impact within the Diocese over a substantial period of time.

2025 KEY PRIORITIES

1. Continue to build community relationships that deliver life changing experiences at Chellington for disadvantaged young people
2. Raise awareness and funds for the Chellington Bursary Fund
3. Expand the outdoor learning experiences



“

The time at Chellington allows children to forge new friendships, try new things, talk about things they wouldn't normally talk about at school. All these things help the children to develop their self-confidence and encourages them to experience different things. Many of our children do not leave Queens Park so experiencing being in the countryside is often a new concept!

”

Head Teacher at Queen's Park Primary School, Bedford

BUILD COMMUNITY RELATIONSHIPS THAT DELIVER LIFE CHANGING EXPERIENCES AT CHELLINGTON FOR DISADVANTAGED YOUNG PEOPLE

Chellington communities:

- The community of groups and organisations that use our services, who in turn are working within their own community to support identified needs
- The community that comes together at Chellington as part of a group's growing and learning experience
- The local community around Chellington, from which we draw volunteers who support the running and development of the Centre

Enabling groups to achieve their outcomes for a visit to Chellington is key to our purpose, so that their stay is an integral part of their ongoing support and work with young people within their community.

Organisationally, we strive to build strong relationships with leaders that become more than resource provider and client, developing new opportunities for partnerships and ongoing use of the centre as part of their programmes.

Every group has its own objectives for their residential and young people have a range of needs. We want to see every child and young person impacted by their stay, showing increased confidence and recognising their own potential through engagement with the countryside that surrounds them. Time to reflect and discuss their experience and the environment they are in, and decide how they want to be when they return home.

The Centre enjoys high levels of repeat bookings from schools, religious youth groups, and youth charities looking to create opportunities for young people to step out of their normal lives and experience a different world at Chellington.

As well as supporting these returning groups in any way we can, we constantly seek to attract new groups - engaging with local community networks and organisations to identify ways in which we can help facilitate experiences at Chellington in response to needs and utilising our bursary scheme to support these experiences whenever necessary.



RAISE AWARENESS AND FUNDS FOR THE CHELLINGTON BURSARY

We believe that every young person should have the opportunity to have a life changing residential experience. The Bursary Fund was set up to support this belief, offering financial support to school groups who find funding for a residential hard to access.

Typically, this might be:

- Schools/youth groups/other organisations working across areas of deprivation
- Groups that, by the nature of the need, would only use the centre for a small group
- Organisations working with young people with special educational needs
- Organisations working with people with physical disabilities

Raising funds for the Chellington Bursary Fund remains a strategic priority for the trustees, both to attract new, relevant youth organisations and to continue to meet our Charitable Objects, ensuring the Centre remains accessible to all, regardless of means.



"Many of our children come from large families, often with two or three generations sharing a house. They come from hugely disadvantaged homes and going away overnight is something they can only dream of! The bursary makes this an affordable trip; it makes this trip possible!"

Head Teacher at Queen's Park
Primary School, Bedford



EXPAND THE OUTDOOR LEARNING EXPERIENCES

We welcome all types of school and youth groups to Chellington but are particularly interested in supporting groups serving disadvantaged young people, having witnessed what an experience at Chellington can achieve. Historically, we have offered a range of activities through 3rd party providers to offer optional chargeable extras such as forest school and animal encounters. These are popular, but not always affordable for groups with limited finances, which is the case for many of our visiting groups.

In consultation with schools and youth groups, we have taken the significant step forward to develop our own programmes and activities that can be delivered by teachers and youth leaders at or around Chellington at low or no cost. This will include activities that encourage the young people who visit to engage, gain knowledge, and learn to appreciate and care for our environment and, for schools, will link to curriculum requirements wherever possible.

This exciting new initiative, led by our new programme manager, will give more schools and youth charities who have limited funds and staff resources the opportunity to provide a unique and potentially life-changing rural residential experience for their young people; an opportunity these young people may not otherwise have.

We are extremely grateful to the Carlton Education Trust and the Wixamtree Trust for funding the first stages of this development. We will continue to fundraise for this important initiative in 2025.



TREASURER'S REPORT

Going Concern: Trading (unrestricted) account

Over the year, the charity experienced a 5% reduction in booking income compared to the previous record level achieved in 2023, with booking income totalling £127,940. This was due in part to a strategic shift in occupancy allocations in favour of youth groups at lower rates, which resulted in lower overall income. When combined with bank interest and unrestricted donations, income totalled £131,583 which was less than the cost of charitable activities of £144,457.

Accounting standards require the trustees to include a charge for depreciation of its property assets within the reported cost of its charitable activities. However, since depreciation is not a cash cost and the trustees consider that the Herald Building is unlikely to depreciate in value, the trustees have decided to use the *Net Movement in Unrestricted Funds excluding Depreciation of the Herald Building* as the principal target for budgeting and performance measurement purposes. Excluding £11,720 of depreciation on the Herald Building, there was a modest decrease in unrestricted reserves of £1,153 over 2024, which the trustees are comfortable with given significant investment in repairs and renewals.

Designated Funds

Given the small fall in unrestricted reserves, no additional transfer of funds was made to the Designated Property Fund over the year.

Free Cash

At the end of 2024, available unrestricted and undesignated cash reserves amounted to £50,381 (2023: £53,495.) Free reserves are above our target of 3 months operating expenditure at around 5 months' operating expenditure. The trustees remain confident that we are able to maintain the business as a going concern for the foreseeable future.

Operating Expenses

We continue to manage our operating costs to minimise our cost base wherever possible whilst looking to renew equipment when necessary. £4,209 was spent in 2024 on renewals of bedding.

Capital (restricted) accounts

During 2024 we received a substantial donation of £100,000 from the trustees of the Edith Winfred Hall Trust. This will enable expenditure on the charity's land and buildings as well as supporting our Bursary Fund. In addition, we received donations to the Bursary Fund of £9,589, many of which were made in memory of our late trustee and inspiration, John Tusting. We made awards from the fund (£5,644) to allow us to continue to enable disadvantaged children and young people to visit the centre. In addition, we completed the development of the centre's camping facilities utilising the restricted funds made available for this purpose.

During the year we established a programme to develop our own educational resources for the use of schools visiting the centre. We raised £22,943 towards this programme of which we spent £10,753, largely on the employment costs of the programme manager.

2024 Financial Outlook

Forward Bookings

As of 31 December 2024, we had confirmed bookings for 2025 and beyond to the value of £93,429 (2022: £73,178), against which we hold deposits of £36,900 (2022: £24,129). We expect to be able to cover our operating costs without recourse to reserves in 2025.

Our fundraising efforts are focused on raising funds for our bursary fund and the development of educational resources in order to broaden the range of courses that we are able to provide to schools.

Approved and authorised for issue by the Board of Trustees on 12 May 2025 and signed on their behalf by:



Edward Chamberlayne – Treasurer

“The accommodation and location were perfect for our overnight stay with our pupils, many of whom were experiencing their first night away from home with anyone outside close family & friends.”

Broughton Fields Primary



GOVERNANCE REPORT

1. STRUCTURE

The Chellington Centre Charity was set up with the singular purpose of supporting and developing the work at the Chellington Centre.

The Charity was established as a registered charity on 2 April 2014 as the Chellington Centre, having been set up and incorporated as a company on 28 November 2013.

The governing document is the Memorandum and Articles of Association dated 21 November 2013, which were adopted by special resolution on the 13 March 2014.

In accordance with the Articles of Association, at least half the number of appointed directors reside within a 15-mile radius of the Chellington Centre.

2. TRUSTEES

John Tusting, for many years the inspiration and driving force behind the Charity, died during the year. His influence will continue to be felt at Chellington for many years to come. Helen Simpson and David Middlebrook resigned from the Board during the year. We are extremely grateful to them for all they contributed.

We welcome Matthew Tuohy to our Board of Trustees. Two additional trustees were appointed after the year end.

3. MISSION & CHARITY'S OBJECTS

"Our mission is to provide an inspirational and rural setting for young people to develop their personal potential."

The Charity's Objects can be summarized as:

The provision, maintenance, organisation and management of The Chellington Centre to:

- 1) Advance education, particularly of the young, and to provide facilities in the interests of social welfare with the objective of improving the conditions of life those using the Centre,
- 2) Develop the physical, mental and spiritual capacities of those in need by reason of youth or financial hardship or another disadvantage, by providing support and activities which develop their skills, capacities and capabilities to enable them to participate in society as mature and responsible individuals.

4. BURSARY FUND

In furtherance of the Objects, but not for any other purpose, the Charity has established a bursary fund from which to provide bursaries to make the facilities of the Charity as accessible as possible to as wide a range of groups as possible.

5. CHARITY GOVERNANCE CODE FOR SMALLER CHARITIES

The Charity's Trustees have adopted the Charity Governance Code for smaller charities:

1. **Organisational purpose** - The board is clear about the charity's aims and ensure that these are being delivered effectively and sustainably.
2. **Leadership** - The board provides strategic leadership in line with the charity's aims and values. Full trustee meetings are held at least quarterly to review financial results, policies and procedures and any issues of governance.
3. **Integrity** - The board acts with integrity, adopting values and creating a culture which help achieve the organisation's charitable purposes. The board is aware of the importance of the public's confidence and trust in charities, and trustees undertake their duties accordingly.
4. **Decision-making, risk and control** - The board makes sure that its decision-making processes are informed, rigorous and timely and that effective delegation, control and risk assessment and management systems are set up and monitored.

The Trustees have assessed the risks that the charity faces. The major financial risk is a reduction in occupation of the Centre. This risk is controlled by close monitoring of advance bookings and adjustment of budgeted spend for flexible costs, when required.

5. **Board effectiveness** - The board works as an effective team, using the appropriate balance of skills, experience, backgrounds and knowledge to make informed decisions.
6. **Diversity** - The board's approach to diversity supports its effectiveness, leadership and decision-making.
7. **Openness and accountability** - The board leads the organisation in being transparent and accountable.

6. RESERVE POLICY

The Trustees have determined that, given the seasonality of income, it is appropriate that unrestricted and undesignated free cash reserves at year end should be maintained to enable us to cover between three- and six-months' salaries and fixed operating expenditure.

Customer deposits and prepayments are held in a separate bank account until such time as occupancy takes place. Restricted reserves are managed to ensure that they are maintained in separate bank accounts and are only applied for the purposes set out in the grant applications and donations.

7. TRUSTEES' RESPONSIBILITIES TO PREPARE FINANCIAL STATEMENTS

Charity law requires the Trustees to prepare financial statements for each financial year which give a true and fair view of the affairs of the charity and of the deficit or surplus of the charity for that year.

In preparing those financial statements, the Trustees are required to:

- select suitable accounting policies and then apply them consistently,
- observe the methods and principles in the Charities SORP,

- make judgements and estimates that are reasonable and prudent,
- state whether applicable accounting standards have been followed, subject to any material departures disclosed and explained in the financial statements, and
- prepare the financial statements on the ongoing concern basis unless it is inappropriate to presume that the charity will continue in business.

The Trustees are responsible for keeping proper accounting records which disclose with reasonable accuracy at any time the financial position of the charity and to enable them to ensure that the financial statements comply with the Charities Act 2011. They are also responsible for safeguarding the assets of the charity and hence for taking reasonable steps for the prevention and detection of fraud and other irregularities.

8. INDEPENDENT EXAMINER

A proposal to reappoint Gavin Williams of Premier FD as the Independent Examiner will be proposed at our forthcoming AGM and he has expressed a willingness to accept.

9. APPROVAL

Approved and authorised for issue by the Board of Trustees on 12 May 2025 and signed on their behalf by:



Rachel Lesiter – Chair



INDEPENDENT EXAMINER'S REPORT TO THE MEMBERS OF THE CHELLINGTON CENTRE

I report to the charity trustees (who are also Directors for the purpose of company law) on my examination of the accounts of the The Chellington Centre Limited ('the charitable company') for the year ended 31 December 2024 which comprise the Statement of Financial Activities, the Balance Sheet and related notes 1 to 11.

This report is made solely to the charity's trustees, as a body, in accordance with section 145 of the Charities Act 2011. My work has been undertaken so that I might state to the charity's trustees those matters I am required to state to them in this report and for no other purpose. To the fullest extent permitted by law, I do not accept or assume responsibility to anyone other than the charity and the charity's trustees as a body, for my work, for this report, or for the opinions I have formed.

Responsibilities and basis of report

As the charity's trustees of The Chellington Centre Limited you are responsible for the preparation of the accounts in accordance with the requirements of the Companies Act 2006 ('the 2006 Act'). Having satisfied myself that the accounts of The Bubble Theatre Company Limited are not required to be audited under Part 16 of the 2006 Act and are eligible for independent examination, I report in respect of my examination of your charity's accounts as carried out under section 145 of the Charities Act 2011 ('the 2011 Act'). In carrying out my examination I have followed the Directions given by the Charity Commission under section 145(5)(b) of the 2011 Act.

An independent examination does not involve gathering all the evidence that would be required in an audit and consequently does not cover all the matters that an auditor considers in giving their opinion on the financial statements. The planning and conduct of an audit goes beyond the limited assurance that an independent examination can provide. Consequently I express no opinion as to whether the financial statements present a 'true and fair' view and my report is limited to those specific matters set out in the independent examiner's statement.

Independent examiner's statement

Since The Chellington Centre Limited's gross income exceeded £250,000 your examiner must be a member of a body listed in section 145 of the 2011 Act. I confirm that I am qualified to undertake the examination because I am a member of ICAEW, which is one of the listed bodies. I have completed my examination. I confirm that no matters have come to my attention in connection with the examination giving me cause to believe:

1. accounting records were not kept in respect of The Chellington Centre Limited as required by section 386 of the 2006 Act; or
2. the accounts do not accord with those records; or
3. the accounts do not comply with the accounting requirements of section 396 of the 2006 Act other than any requirement that the accounts give a 'true and fair view' which is not a matter considered as part of an independent examination; or
4. the accounts have not been prepared in accordance with the methods and principles of the Statement of Recommended Practice for accounting and reporting by charities applicable to charities preparing their accounts in accordance with the Financial Reporting Standard applicable in the UK and Republic of Ireland (FRS 102).

I have no concerns and have come across no other matters in connection with the examination to which attention should be drawn in this report in order to enable a proper understanding of the accounts to be reached.



.....
Tim Sullivan FCA
ICAEW
9 Hare & Billet Road
Blackheath
SE3 ORB

12 May 2025

INCOME & EXPENDITURE ACCOUNT

	Notes	Unrestricted 2024 £	Restricted 2024 £	Total 2024 £	Total 2023 £
Incoming resources from charitable activities:					
Voluntary income		3,643	137,747	141,390	4,892
Bookings income		127,940	-	127,940	134,186
Total incoming resources	2	<u>131,583</u>	<u>137,747</u>	<u>269,330</u>	<u>139,078</u>
Resources expended					
Fundraising		3,273	770	4,043	-
Charitable activities	3 & 5	141,183	21,904	163,087	149,515
Total resources expended		<u>144,456</u>	<u>22,674</u>	<u>167,130</u>	<u>149,515</u>
Transfers	10				
Net movement in funds	4	(12,873)	115,073	102,200	(10,437)
Reconciliation of funds					
Total funds brought forward		362,982	11,991	374,973	385,410
Total funds carried forward		<u>350,109</u>	<u>127,064</u>	<u>477,173</u>	<u>374,973</u>

All income and expenditures are derived from continuing activities.

All recognised gains and losses are included in the Statement of Financial Activities.

The notes on pages 20 to 27 form part of these financial statements

BALANCE SHEET

	Notes	2024		2023	
		£	£	£	£
Fixed assets					
Tangible fixed assets	8		293,076		303,620
Current assets					
Cash in hand and in bank		218,215		116,224	
Accounts Receivable		6,620			
Prepayments		1,608		866	
		<u>226,443</u>		<u>117,090</u>	
Creditors: amounts falling due within one year	9	<u>(42,346)</u>		<u>(45,737)</u>	
Net current assets			<u>184,097</u>		<u>71,353</u>
Net assets			<u>477,173</u>		<u>374,973</u>
Funds					
Unrestricted funds			345,065		357,982
Designated funds			5,044		5,000
Restricted funds			127,064		11,991
Total funds			<u>477,173</u>		<u>374,973</u>

The notes on pages 19 to 25 form part of these financial statements.

For the financial year ended 31 December 2024 the charity was entitled to exemption from audit under section 477 Companies Act 2006. No member of the charity has deposited a notice, pursuant to section 476, requiring an audit of these financial statements under the requirements of the Companies Act 2006.

The directors acknowledge their responsibilities for ensuring that the charity keeps accounting records which comply with section 386 of the Act and for preparing financial statements which give a true and fair view of the state of affairs of the charity as at the end of the financial year and of its profit or loss for the financial year in accordance with the requirements of sections 394 and 395 and which otherwise comply with the requirements of the Companies Act 2006 relating to accounts, so far as applicable to the charity.

These financial statements have been prepared in accordance with the provisions applicable to companies subject to the small companies' regime within Part 15 of the Companies Act 2006.

Approved by the Board and authorised for issue on 12 May 2025



Edward Chamberlayne - Treasurer

NOTES TO THE FINANCIAL STATEMENTS

1. Accounting Policies

1.1. Accounting convention

The financial statements are prepared in accordance with the Statement of Recommended Practice: Accounting and Reporting by Charities (SORP 2019 – FRS 102 version), applicable accounting standards and the Companies Act 2006. The charity has taken advantage of the Small Entity provisions of FRS 102. The financial statements are presented in Sterling (£).

Statement on going concern

After reviewing the charity's forecasts and projections, the directors have reasonable expectation that the charity has adequate resources to continue in operational existence for the foreseeable future. The charity therefore continues to adopt the going concern basis in preparing its financial statements.

1.2 Company status

The charity is a company limited by guarantee. The directors of the company are the trustees named on page 1. In the event of the charity being wound up, the liability in respect of the guarantee is limited to £1 per member of the charity.

1.3. Incoming resources

Incoming resources represents the total income receivable during the year comprising of donated income, income from events and bookings. All incoming resources are included in the Statement of Financial Activities when the charity is legally entitled to the income and the amount can be quantified with reasonable certainty.

1.4. Expenditure

All expenditure is included on an accruals basis and is inclusive of all VAT, which cannot be reclaimed, and is reported as part of the expenditure to which it relates:

- Charitable expenditure comprises those costs incurred by the charity in the delivery of its activities and services for its beneficiaries. It includes both costs that can be allocated directly to such activities and those costs of an indirect nature necessary to support them.
- Fundraising expenditure comprises those costs incurred by the charity for professional services in relation to the identification of potential funders and the preparation of grant applications in compliance with the Code of Fundraising Practice issued by the independent regulator of charitable fundraising in England, Wales and Northern Ireland.
- Governance costs include those costs associated with meeting the constitutional and statutory requirements of the charity and include the Independent Examiner's fees and costs linked to the strategic management of the charity.
- All costs are allocated directly, as such there are no support costs to apportion.

1.5. Funds

General funds are unrestricted funds which are available for use at the discretion of the Trustees in furtherance of the general objects of the charity and which have not been designated for other purposes.

Designated funds are funds set aside for specific purposes. The aim and use of the designated funds are set out in the notes to the Financial Statements.

Restricted funds are funds, which are to be used in accordance with specific restrictions imposed by the donor. The aim and use of the restricted funds are set out in the notes of the financial statements.

1.6. Tangible fixed assets and depreciation

Capital expenditure on items costing £2,000 or higher are recorded as tangible fixed assets. Tangible fixed assets are stated at cost valuation less depreciation.

Depreciation of equipment is provided on a straight-line basis at rates calculated to write off the cost or valuation less estimated residual of each asset over its expected useful life. The Herald Building is depreciated over a 25-year useful life; Kitchen equipment is depreciated over a three-year useful life; Alarm systems are depreciated over a ten-year useful life; Media equipment is depreciated over a five-year useful life; Camping equipment and Games equipment valued at less than £5,000 is fully depreciated in the year of acquisition.

1.7. Pensions

The Charity operates a defined contribution plan for its employees. A defined contribution plan is a pension plan under which the Charity pays fixed contributions into a separate entity. Once the contributions have been paid the Charity has no further payment obligations.

The contributions are recognised as an expense in the Income and Expenditure Account when they fall due. Amounts not paid are shown in accruals as a liability in the Balance Sheet. The assets of the plan are held separately from the Company in independently administered funds.

1.8. Taxation

The Chellington Centre is a registered charity and is not liable to Corporation Tax.

2. Incoming Resources from Charitable Activities

Incoming resources from charitable activities:	Unrestricted	Restricted	Total	Total
	2024	2024	2024	2023
Voluntary Income	£	£	£	£
Donations - Bursary Fund	-	9,589	9,589	1,750
Donations - Educational Programme	-	22,943	22,943	-
Donation - Edith Winifred Hall Trust	-	100,000	100,000	-
Donation - Site Development	-	4,188	4,188	-
Donations - General	75	-	75	1,105
Other income (bank interest)	3,568	1,027	4,595	2,037
	<u>3,643</u>	<u>137,747</u>	<u>141,390</u>	<u>4,892</u>
Bookings income				
Youth bookings	63,074	-	63,074	63,854
Non-youth bookings	64,866	-	64,866	70,332
	<u>127,940</u>	<u>-</u>	<u>127,940</u>	<u>134,186</u>
Total incoming resources	<u>131,583</u>	<u>137,747</u>	<u>269,330</u>	<u>139,078</u>

Donations include associated Gift Aid of £4,576 (2023, £63) received from HMRC during the year.

3. Charitable Activities (including Governance Costs)

Resources expended	Unrestricted/ Designated 2024	Restricted 2024	Total 2024	Total 2023
	£	£	£	£
Fundraising costs				
Professional services	3,273	770	4,043	-
Charitable activities				
Direct costs of bookings	1,796	-	1,796	1,879
Staff & volunteer costs	72,150	-	72,150	64,257
Utilities, rent & rates	19,071	-	19,071	35,820
Insurance & alarms	5,787	-	5,787	5,115
Repairs, maintenance & renewals	23,117	-	23,117	12,787
Administration & marketing	7,542	-	7,542	8,604
Herald Building Depreciation	11,720	-	11,720	12,209
Bursaries	-	5,644	5,644	4,450
Site Development	-	10,753	10,753	4,394
Educational Programme	-	5,507	5,507	
Total cost of charitable activities	141,183	21,904	163,087	149,515
Total cost of resources expended	144,456	22,674	167,130	149,515

4. Net movement in unrestricted funds

	Unrestricted 2024 £	Unrestricted 2023 £
Total incoming resources	131,583	137,080
Total resources expended excluding depreciation on the Herald Building	132,736	128,461
Net movement in unrestricted funds excluding depreciation on the Herald Building	(1,153)	8,619
Depreciation on the Herald Building	11,720	12,209
Net movement in unrestricted funds:	(12,873)	(3,590)

The Trustees set their annual budget based on the expected *Net Movement in Unrestricted Funds excluding Depreciation on the Herald Building*. This reflects the fact that although the trustees are required to depreciate the Herald Building, there is no associated cash cost and they do not expect the value of the building to fall over time.

The trustees intend to target an annual *Net Movement in Unrestricted Funds excluding Depreciation on the Herald Building* of £5,000 per annum and to transfer this amount each year to a designated fund to be set aside for future significant expenditure that may be required to be spent on the charity's buildings over time.

5. Governance Costs

	2024	2023
	£	£
Independent examiner's remuneration (included in Note 3)	800	900
Trustees' expenses	-	-
Total governance costs	800	900

6. Trustees' remuneration

The trustees received no remuneration (£2023: £nil) and received no reimbursements.

7. Staff Remuneration and numbers

	2024	2023
	£	£
Staff remuneration		
Wages and salaries	75,049	62,605
Pension costs	2,051	1,251
Total staff remuneration	77,100	63,856

The average number of full and part-time employees during the year were as follows:

	2024	2023
Full time – Centre Manager	1.0	1.0
Part time – Assistant Managers (two)	1.2	1.1
Part time - Programme Manager	0.2	-
	2.4	2.1

No employees received emoluments of more than £60,000 per annum.

8. Tangible fixed assets

Tangible fixed assets	Herald Building	Alarm Systems	Camping Equipment	Other Equipment	Total
	£	£	£	£	£
Cost or valuation					
At 1 January 2024	313,583	11,365	3,076	9,001	337,026
Disposals	-	-	-	1,636	1,636
Acquisitions	-	-	-	3,072	3,072
At 31 December 2024	313,583	11,365	3,076	10,437	338,462
Depreciation					
At 1 January 2024	20,571	2,462	3,076	7,296	33,406
Disposals	-	-	-	1,636	1,636
Charge for year	11,720	1,137	-	759	13,616
At 31 December 2024	32,291	3,599	3,076	6,420	45,387
Net book value					
At 31 December 2023	293,012	8,903	-	1,705	303,620
At 31 December 2024	281,292	7,766	-	4,018	293,076

9. Creditors: amounts falling due within one year

	2024	2023
Creditors: amounts falling due within one year	£	£
Deferred booking income	38,521	24,129
Retention on building contract	-	6,811
Accruals	1,651	7,805
Pension payable	1,271	388
Accounts payable	836	5,868
Barclaycard	67	736
Total creditors	42,346	45,737

Deferred income relates to pre-payments for future bookings.

10. Analysis of net assets between funds

Analysis of net assets between funds	Unrestricted Fund	Restricted Funds	Total Funds
	£	£	£
Tangible fixed assets	293,076	-	293,076
Current assets	99,378	127,064	226,442
Current liabilities	(42,346)	-	(42,346)
Net assets at 31 December 2024	350,109	127,064	477,173
Tangible fixed assets	303,620	-	303,620
Current assets	98,287	18,802	117,090
Current liabilities	(38,926)	(6,811)	(45,737)
Net assets at 31 December 2023	362,982	11,991	374,973

11. Movement in funds

	At 1-Jan-2024 £	Incoming Resources £	Resources Expended £	Transfers £	At 31-Dec-2024 £
Unrestricted funds					
General funds	357,982	131,539	144,456	-	345,065
Designated funds	5,000	44		-	5,044
Total Unrestricted funds	362,982	131,583	144,456	-	350,109
Restricted funds					
Bursary	2,323	9,681	5,644	-	6,360
Site Development	9,668	105,123	10,753	-	104,039
Educational Programmes	-	22,943	6,277	-	16,666
Total restricted funds	11,991	137,747	22,674	-	127,064
Total Funds	374,973	269,330	167,130	-	477,173

Designated fund - The trustees have an objective of transferring £5,000 each year into a designated fund to establish a reserve to finance any future major spending that may be required on either of the properties at the Centre.

Bursary fund - The aim of the Chellington Bursary Fund is to make The Chellington Centre as accessible as possible, particularly for young people in areas of deprivation where funding is not easily available for residential activity. In 2024 ten Bursaries were awarded to a value of £3,640 (2023; nine awards to a value of £4,450). Four further awards were approved in 2024 to a value of £2,004 for events in 2025. (2023; three awards to a value of £1,850.)

Site Development fund - This restricted funding was raised to upgrade the facilities at The Centre. A substantial new donation was received in 2024 restricted to use on the Centre's land and buildings and the funding of bursaries.

Educational Programme - Funding has been raised to finance the production and delivery of educational resources to enable more schools to access The Chellington Centre's facilities.

THE CHELLINGTON CENTRE

England & Wales - Charity number 1156511

Accounts



FINANCIAL STATEMENTS AND ANNUAL REPORT

FOR THE YEAR ENDED 31 DECEMBER 2023

(Incorporated as a Company Limited by Guarantee and not having a Share Capital)

CONTENTS

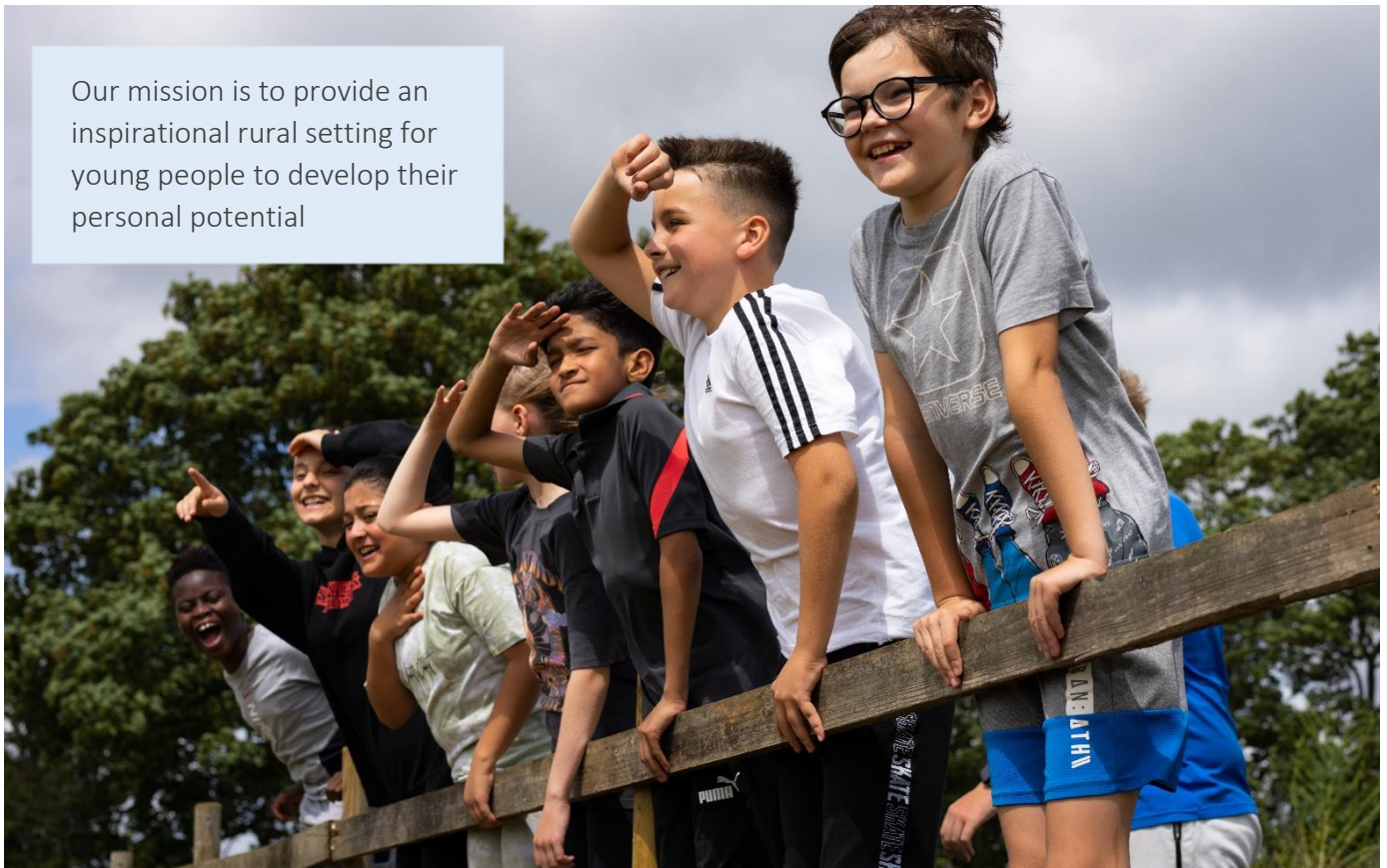
Contents	1
Reference and Administrative Details of The Charity, its Trustees and Advisers.....	2
Strategic Report.....	3
Overview	3
2024 Key Priorities.....	5
Treasurer's Report.....	11
Going Concern: Trading (unrestricted) account	11
Capital (restricted) accounts	11
2024 Financial Outlook.....	11
Governance Report	13
Independent Examiner's Report to the Members of The Chellington Centre	16
Income and Expenditure Account	17
Balance Sheet	18
Notes to the Financial Statements	19
1. Accounting policies.....	19
2. Incoming resources from charitable activities	21
3. Charitable activities (including Governance costs).....	22
4. Governance costs	22
5. Trustees remuneration.....	22
6. Staff remuneration and numbers	23
7. Tangible fixed assets.....	23
8. Creditors: amounts falling due within one year	24
9. Analysis of net assets between funds.....	24
10. Movements in funds.....	25

REFERENCE AND ADMINISTRATIVE DETAILS OF THE CHARITY, ITS TRUSTEES AND ADVISERS

Company number	08794342 (England and Wales)
Charity number	1156511 (England and Wales)
Board of trustees (Directors)	CHAPMAN, Helen – appointed 12.1.23 CHAMBERLAYNE, Edward Charles (Treasurer) GILBERT, Sally Elizabeth - resigned 23.3.23 HADFIELD, Peter Charles - resigned 12.5.23 LESITER, Rachel Mary (Chair) MIDDLEBROOK, Venerable David John SIMPSON, Helen Margaret TUSTING, James Charles TUSTING, John Robert
Independent examiner	Nadeem Raja Premier FD Limited 51 Cardiff Road Luton Bedfordshire LU1 1PP
Bankers	Barclays Bank Plc 8 Market Street Wellingborough Northamptonshire NN8 1AP
Registered address	The Chellington Centre Felmersham Road Carlton Bedford MK43 7NA
Website	http://www.chellington.org

STRATEGIC REPORT

Our mission is to provide an inspirational rural setting for young people to develop their personal potential



The Chellington Centre is an award winning, eco-friendly youth residential retreat - a base for exclusive-use learning, recreation and self-development in a beautiful, rural setting.

It is a place of expedition, inspiration and invigoration, particularly but not exclusively for young people, offering many opportunities to build self-confidence, reflect and celebrate life. A place of transformation.

Every year, we welcome and serve thousands of young people from diverse backgrounds who come to Chellington for residential or day trips with their schools, youth groups, families or through a charity.



“Chellington is uniquely able to create a magical reality, a space unto itself, the world as it should be. Having experienced it, when they return home, the young people can remember what they built for themselves at Chellington, and what can be built in their own community too.”

CEO of Advocacy Academy

We are extremely grateful to the Carlton Education Trust, Edith Winifred Hall Trust and our neighbours - the Mesney family and Rajinder Moni - for their significant and unwavering support over many years. We would like to sincerely thank them and all our friends, visitors, neighbours (young and old), trustees, staff, donors and patrons.

Thanks to you all, the Chellington Centre can continue to thrive, supporting young people and their communities.

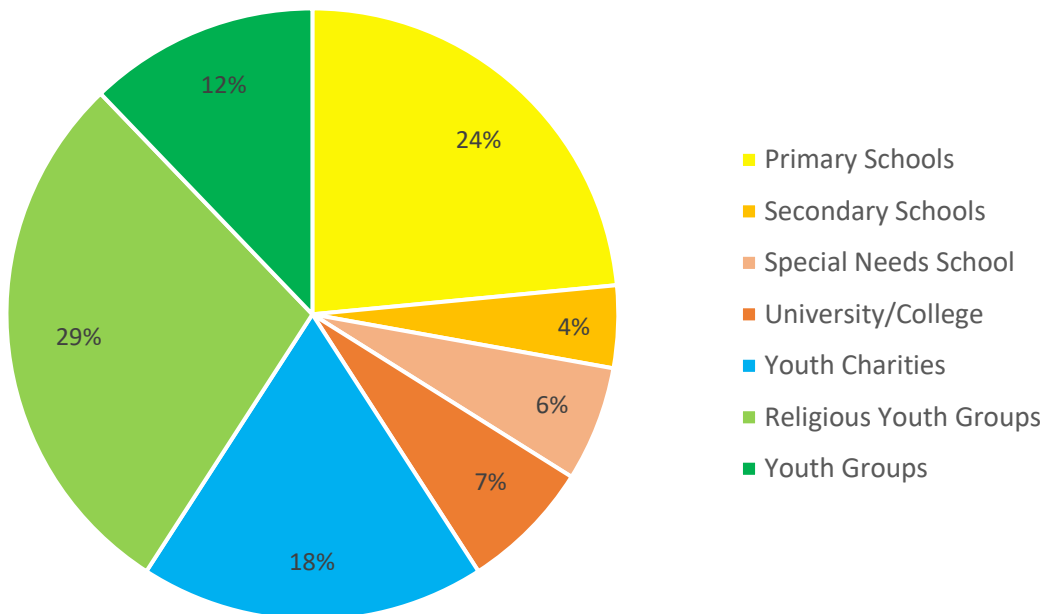


Over the last few years, we have focused our efforts on expanding our accommodation capacity to cater for larger school and youth group residentials. This has been achieved through the construction of the Herald Building with washroom facilities for campers as well as office space for our dedicated team of staff and volunteers.

As a result, The Chellington Centre now offers overnight accommodation for up to 66 and day trip capacity for 100. Up to 36 can sleep in our dormitory bunkrooms inside the main building with the option to add a further 30 camping in the new Red Kite camping zone. Practically, this means all groups have greater flexibility to choose a mix of accommodation that best suits their needs.

Importantly, we remain committed to welcoming groups of all sizes, big or small, with each group enjoying sole use of the entire site.

Occupancy breakdown of groups of young people visiting Chellington in 2023



“The Chellington Centre was the perfect venue for our group of 18 young people and 6 staff from London to escape from the city and ground themselves in nature. Beautiful views from the Centre, and wonderful modern and clean facilities made available to us within it. Located within rolling hills, our young people were able to go on hikes and walks, and then return to the Centre to engage in our workshops and activities.

The team at Chellington are very available and supportive, but also keep their distance so as to let you get on with things. We are incredibly grateful for our relationship with The Chellington Centre and the space that they have. We would definitely recommend the Centre for any groups looking to escape the hustle and bustle, build teams and work together.”

Advocacy Academy, Youth Charity

2024 KEY PRIORITIES

1. Build community relationships that deliver life changing experiences at Chellington for disadvantaged young people
2. Raise awareness and funds for the Chellington Bursary Fund
3. Expand the outdoor learning experiences
4. Achieve GOLD green tourism award
5. Build financial resilience and future-proof the charity



BUILD COMMUNITY RELATIONSHIPS THAT DELIVER LIFE CHANGING EXPERIENCES AT CHELLINGTON FOR DISADVANTAGED YOUNG PEOPLE

Chellington communities:

- The local community around Chellington, from which we draw volunteers who support the running and development of the Centre
- The community of groups and organisations that we engage with, who in turn are working within their own community to support identified needs
- The community that comes together at Chellington as part of a group's growing and learning experience

Enabling groups to achieve their outcomes for a visit to Chellington is key to our purpose, so that their stay is an integral part of their ongoing support and work with young people within their community.

Organisationally, we strive to build strong relationships with leaders that become more than resource provider and client, developing new opportunities for partnerships and ongoing use of the centre as part of their programmes.

Every group has its own objectives for their residential and young people have a range of needs. We want to see every child & young person impacted by their stay, showing increased confidence and recognising their own potential through engagement with the countryside that surrounds them. Time to reflect and discuss their experience and the environment they are in, and decide how they want to be when they return home.

The Centre enjoys high levels of repeat bookings from schools, religious youth groups, local authorities and youth charities looking to create opportunities for young people to step out of their normal lives and experience a different world at Chellington.

As well as supporting these returning groups in any way we can, we constantly seek to attract new groups - engaging with community networks and organisations in the area to identify how we can facilitate responses to needs and utilising our bursary scheme to support use of the centre whenever necessary.



RAISE AWARENESS AND FUNDS FOR THE CHELLINGTON BURSARY

We believe that every young person should have the opportunity to have a life changing residential experience. The Bursary Fund was set up to support this belief, offering financial support to school groups who find funding for a residential hard to access.

Typically, this might be:

- Schools/youth groups/other organisations working across areas of deprivation
- Groups that, by the nature of the need, would only use the centre for a small group
- Organisations working with young people with special educational needs
- Organisations working with people with physical disabilities

Raising funds for the Chellington Bursary Fund remains a strategic priority for the trustees, both to attract new, relevant youth organisations and to continue to meet our Charitable Objects, ensuring the Centre remains accessible to all, regardless of means.



“Many of our children come from large families, often with two or three generations sharing a house. They come from hugely disadvantaged homes and going away overnight is something they can only dream of! The bursary makes this an affordable trip; it makes this trip possible!”

Head Teacher at Queen’s Park
Primary School, Bedford

EXPAND THE OUTDOOR LEARNING EXPERIENCES

The Chellington Centre sits on an ancient site. Communities have existed in harmony there since the bronze age with local sheep farming, leatherwork, lacework and reed-weaving – all important medieval industries. As custodians, we have a duty to share knowledge, engage and lead in appreciating and caring for our environment. This is particularly important to us as we work with young people whose future will be impacted by how we operate.

Ongoing initiatives to engage groups include: nature walks, nature identification boards, re-wilding activity (tree & hedgerow planting, bug hotels, wildflower bridging), socio-historical quizzes, binocular bird-spotting, star-gazing and eco-signage tips.

We also work with third party organisations to offer a range of different, more structured ways for groups to engage with their environment:



Forest Skills

Groups can choose from a variety of on-site forest skills, shelter building, fire lighting, wood craft, learning about local trees and wildlife surrounding the Centre.



Animal Farm

An opportunity to get close to farm animals in a quiet and safe environment. This is delivered by an award winning small mobile animal farm with experience of animal assisted therapy.



Rewilding

Groups can get involved in our re-wilding activities including hedgerow and tree planting, and wildflower bridging.



Raptor Encounters

A close-up educational experience with rescued native birds of prey (owls, hawks and falcons) led by the Raptor Foundation.



Mini Map Makers

Groups can learn all about maps with these inspiring workshops run by a professional cartographer.



Harrold-Odell Country Park

With spectacular views from the Centre, enjoy the walk to this Green Flag water park with 144 acres of beauty and tranquility.



River Resource Pack

Learning resource for Geography students studying the impact of pluvial run-off, localised flooding and river flow.

There's also nothing better than taking a walk, enjoying the view or ending the day around the campfire.



ACHIEVE GOLD GREEN TOURISM AWARD

We are proud to have received the silver award in recognition of our green credentials and are now working towards gold status. Among many other things, this involves the creation of a visitors' charter to encourage groups to embrace our commitment to green tourism.



"The time at Chellington allows children to forge new friendships, try new things, talk about things they wouldn't normally talk about at school. All these things help the children to develop their self-confidence and encourages them to experience different things. Many of our children do not leave Queens Park so experiencing being in the countryside is often a new concept!"

Head Teacher at Queen's Park Primary School,
Bedford



BUILD FINANCIAL RESILIENCE AND FUTURE-PROOF THE CHARITY

Since the creation of the Chellington Centre Charity at the end of 2013, the Chellington team has done much to build a first-class reputation for hosting residential. Continuous efforts have been made to be self-sustaining financially through efficient management and with the help of many volunteers.

A key part of our fundraising strategy involves generating core income from large group bookings of friends and families, and hosting a limited number of ethical weddings and premium events. In addition to generating income, these bookings help to engage and educate the local community about what goes on at the Centre and ways to support it.

However, the Charity's mission to help disadvantaged young people enjoy residential at Chellington through bursaries and concessions in fees will and must always remain a high priority. This results in a constant need to strike a careful balance between the focus on generating enough bookings income to finance the running costs and our commitment to supporting the disadvantaged youth people who sit at the very core of the Charity's objectives.

To date, we have been extremely fortunate in receiving financial support from a number of key benefactors responding with great generosity when called upon. However, Chellington lacks an endowment fund to provide financial security and therefore has no guaranteed fall-back resilience.

Over the coming years, as well as building financial reserves through the generation of bookings income and careful cost management, the Charity will seek to secure a future that achieves a longer-term level of financial resilience, working in partnership with other organisations sharing the same vision to improve the lives of disadvantaged young people.

"Thank you for an amazing week. The young people had such a lovely time and made huge improvements in their social and independence skills."

St John's School, SEN



TREASURER'S REPORT

Going Concern: Trading (unrestricted) account

Over the year, the charity experienced a 23% increase in booking income compared to the previous record level achieved in 2022, with booking income reaching £134,186. When combined with voluntary income of £2,894 this was modestly less than the cost of charitable activities of £140,670 which were inflated by a £25,259 increase in electricity costs compared to the previous year.

Accounting standards require the trustees to include a charge for depreciation of its property assets within the reported cost of its charitable activities. However, since depreciation is not a cash cost and the trustees consider that the Herald Building is unlikely to depreciate in value, the trustees have decided to use the *Net Movement in Unrestricted Funds excluding Depreciation of the Herald Building* as the principal target for budgeting and performance measurement purposes. Excluding £12,209 of depreciation on the Herald Building there was an increase in unrestricted reserves of £8,619 over 2023. The Trustees consider this to be a strong financial result, particularly given the sharp increase in electricity costs.

Designated Funds

The trustees plan to transfer £5,000 each year to a designated property reserve fund to be set aside for future significant expenditure projects that may be required over time relating to the charity's buildings. The initial transfer of £5,000 was made to this new fund in 2023.

Free Cash

At the end of 2023, available unrestricted and undesignated cash reserves amounted to £53,495. Consequently, free reserves are now above our target of 3 months operating expenditure at around 5 months' operating expenditure. The trustees remain confident that we are able to maintain the business as a going concern for the foreseeable future.

Operating Expenses

We continue to manage our operating costs to minimise our cost base wherever possible.

Capital (restricted) accounts

During 2023 we have continued to seek donations for our Bursary Fund (£1,750) and make awards from the fund (£4,450) to allow us to continue to enable disadvantaged children and young people to visit the centre. In addition, we moved further towards completion of the development of the centre's camping facilities utilising the restricted funds made available for this purpose.

2024 Financial Outlook

Forward Bookings

As of 31 December 2023, we had confirmed bookings for 2024 and beyond to the value of £73,178 (2022: £74,871), against which we hold deposits of £24,129 (2022: £20,060).

We have renegotiated our energy supplies and expect to see a significant reduction in our utility costs as a result. This has enabled us to increase staffing levels to cope with the increased activity seen over the last year and also to budget for necessary renewals of bedding and other items within the centre. We expect to generate a small surplus (excluding depreciation on the Herald Building) which will allow us to transfer an additional £5,000 to the designated reserve during the year.

Our fundraising efforts will focus on raising funds for the Bursary Fund to enable more young people who would otherwise be unable to visit the Centre to benefit from what can offer.

Approved and authorised for issue by the Board of Trustees on 30 May 2024 and signed on their behalf by:



Edward Chamberlayne – Treasurer

“The accommodation and location were perfect for our overnight stay with our pupils, many of whom were experiencing their first night away from home with anyone outside close family & friends.”

Broughton Fields Primary



GOVERNANCE REPORT

1. STRUCTURE

The Chellington Centre Charity was set up with the singular purpose of supporting and developing the work at the Chellington Centre.

The Charity was established as a registered charity on 2 April 2014 as the Chellington Centre, having been set up and incorporated as a company on 28 November 2013.

The governing document is the Memorandum and Articles of Association dated 21 November 2013, which were adopted by special resolution on the 13 March 2014.

In accordance with the Articles of Association, at least half the number of appointed directors reside within a 15-mile radius of the Chellington Centre.

2. TRUSTEES

Sally Gilbert and Peter Hadfield resigned from the Board during the year. We are extremely grateful to them for all they contributed.

We welcome Helen Chapman to our Board of Trustees.

3. MISSION & CHARITY'S OBJECTS

"Our mission is to provide an inspirational and rural setting for young people to develop their personal potential."

The Charity's Objects can be summarized as:

The provision, maintenance, organisation and management of The Chellington Centre to:

- 1) Advance education, particularly of the young, and to provide facilities in the interests of social welfare with the objective of improving the conditions of life those using the Centre,
- 2) Develop the physical, mental and spiritual capacities of those in need by reason of youth or financial hardship or another disadvantage, by providing support and activities which develop their skills, capacities and capabilities to enable them to participate in society as mature and responsible individuals.

4. BURSARY FUND

In furtherance of the Objects, but not for any other purpose, the Charity has established a bursary fund from which to provide bursaries to make the facilities of the Charity as accessible as possible to as wide a range of groups as possible.

5. CHARITY GOVERNANCE CODE FOR SMALLER CHARITIES

The Charity's Trustees have adopted the Charity Governance Code for smaller charities:

1. **Organisational purpose** - The board is clear about the charity's aims and ensure that these are being delivered effectively and sustainably.
2. **Leadership** - The board provides strategic leadership in line with the charity's aims and values. Full trustee meetings are held at least quarterly to review financial results, policies and procedures and any issues of governance.
3. **Integrity** - The board acts with integrity, adopting values and creating a culture which help achieve the organisation's charitable purposes. The board is aware of the importance of the public's confidence and trust in charities, and trustees undertake their duties accordingly.
4. **Decision-making, risk and control** - The board makes sure that its decision-making processes are informed, rigorous and timely and that effective delegation, control and risk assessment and management systems are set up and monitored.

The Trustees have assessed the risks that the charity faces. The major financial risk is a reduction in occupation of the Centre. This risk is controlled by close monitoring of advance bookings and adjustment of budgeted spend for flexible costs, when required.

5. **Board effectiveness** - The board works as an effective team, using the appropriate balance of skills, experience, backgrounds and knowledge to make informed decisions.
6. **Diversity** - The board's approach to diversity supports its effectiveness, leadership and decision-making.
7. **Openness and accountability** - The board leads the organisation in being transparent and accountable.

6. RESERVE POLICY

The Trustees have determined that, given the seasonality of income, it is appropriate that unrestricted and undesignated free cash reserves at year end should be maintained to enable us to cover between three- and six-months' salaries and fixed operating expenditure.

Customer deposits and prepayments are held in a separate bank account until such time as occupancy takes place. Restricted reserves are managed to ensure that they are maintained in separate bank accounts and are only applied for the purposes set out in the grant applications and donations.

7. TRUSTEES' RESPONSIBILITIES TO PREPARE FINANCIAL STATEMENTS

Charity law requires the Trustees to prepare financial statements for each financial year which give a true and fair view of the affairs of the charity and of the deficit or surplus of the charity for that year.

In preparing those financial statements, the Trustees are required to:

- select suitable accounting policies and then apply them consistently,
- observe the methods and principles in the Charities SORP,

- make judgements and estimates that are reasonable and prudent,
- state whether applicable accounting standards have been followed, subject to any material departures disclosed and explained in the financial statements, and
- prepare the financial statements on the ongoing concern basis unless it is inappropriate to presume that the charity will continue in business.

The Trustees are responsible for keeping proper accounting records which disclose with reasonable accuracy at any time the financial position of the charity and to enable them to ensure that the financial statements comply with the Charities Act 2011. They are also responsible for safeguarding the assets of the charity and hence for taking reasonable steps for the prevention and detection of fraud and other irregularities.

8. INDEPENDENT EXAMINER

A proposal to reappoint Nadeem Raja as the Independent Examiner will be proposed at our forthcoming AGM and he has expressed a willingness to accept.

9. APPROVAL

Approved and authorised for issue by the Board of Trustees on 30 May 2024 and signed on their behalf by:

A handwritten signature in black ink, appearing to read 'Rachel Lesiter'.

Rachel Lesiter – Chair



INDEPENDENT EXAMINER'S REPORT TO THE MEMBERS OF THE CHELLINGTON CENTRE

I report to the trustees on my examination of the accounts of the above charity for the year ended 31 December 2022.

Responsibilities and basis of report

As the charity's trustees of the company (and its directors for the purposes of company law) you are responsible for the preparation of the accounts in accordance with the requirements of the Charities Act 2011 ('the Act').

I report in respect of my examination of the Charity's accounts carried out under section 145 of the 2011 Act and in carrying out my examination, I have followed all the applicable Directions given by the Charity Commission under section 145(5)(b) of the Act.

Independent examiner's statement

I have completed my examination. I confirm that no material matters have come to my attention in connection with the examination which gives me cause to believe that in, any material respect:

- the accounting records were not kept in accordance with section 130 of the Charities Act; or
- the accounts did not accord with the accounting records; or
- the accounts did not comply with the applicable requirements concerning the form and content of accounts set out in the Charities (Accounts and Reports) Regulations 2008 other than any requirement that the accounts give a 'true and fair' view which is not a matter considered as part of an independent examination.

I have no concerns and have come across no other matters in connection with the examination to which attention should be drawn in this report in order to enable a proper understanding of the accounts to be reached.

A handwritten signature in blue ink, appearing to read 'Nadeem Raga'.

Nadeem Raga FCCA
51 Cardiff Road, Luton, Bedfordshire LU1 1PP

8 May 2024

INCOME & EXPENDITURE ACCOUNT

	Notes	Unrestricted 2023 £	Restricted 2023 £	Total 2023 £	Total 2022 £
Incoming resources from charitable activities:					
Voluntary income		2,894	1,998	4,892	45,962
Bookings income		134,186		134,186	108,751
Government funding				0	2,667
Total incoming resources	2	137,080	1,998	139,078	157,380
Resources expended					
Fundraising				0	1,155
Charitable activities	3 & 5	140,670	8,844	149,514	113,797
Total resources expended		140,670	8,844	149,514	114,952
Transfers	10				
Net movement in funds	4	-3,590	-6,847	-10,437	42,428
Reconciliation of funds					
Total funds brought forward		366,572	18,838	385,410	342,982
Total funds carried forward		362,982	11,991	374,973	385,410

All income and expenditures are derived from continuing activities.

All recognised gains and losses are included in the Statement of Financial Activities.

The notes on pages 19 to 25 form part of these financial statements

BALANCE SHEET

	Notes	2023		2022	
		£	£	£	£
Fixed assets					
Tangible fixed assets	8		303,620		315,708
Current assets					
Cash in hand and in bank		116,224		100,899	
Prepayments		866			
		<u>117,090</u>		<u>100,899</u>	
Creditors: amounts falling due within one year	9	<u>-45,737</u>		<u>-31,196</u>	
Net current assets			<u>71,353</u>		<u>69,702</u>
Net assets			<u>374,973</u>		<u>385,410</u>
Funds					
Unrestricted funds			357,982		366,573
Designated funds			5,000		
Restricted funds			<u>11,991</u>		<u>18,837</u>
Total funds			<u>374,973</u>		<u>385,410</u>


The notes on pages 19 to 25 form part of these financial statements.

For the financial year ended 31 December 2023 the charity was entitled to exemption from audit under section 477 Companies Act 2006. No member of the charity has deposited a notice, pursuant to section 476, requiring an audit of these financial statements under the requirements of the Companies Act 2006.

The directors acknowledge their responsibilities for ensuring that the charity keeps accounting records which comply with section 386 of the Act and for preparing financial statements which give a true and fair view of the state of affairs of the charity as at the end of the financial year and of its profit or loss for the financial year in accordance with the requirements of sections 394 and 395 and which otherwise comply with the requirements of the Companies Act 2006 relating to accounts, so far as applicable to the charity.

These financial statements have been prepared in accordance with the provisions applicable to companies subject to the small companies' regime within Part 15 of the Companies Act 2006.

Approved by the Board and authorised for issue on 30 May 2024


 E. CHAMBERLAYNE - TREASURER

NOTES TO THE FINANCIAL STATEMENTS

1. Accounting Policies

1.1. Accounting convention

The financial statements are prepared in accordance with the Statement of Recommended Practice: Accounting and Reporting by Charities (SORP 2019 – FRS 102 version), applicable accounting standards and the Companies Act 2006. The charity has taken advantage of the Small Entity provisions of FRS 102. The financial statements are presented in Sterling (£).

Statement on going concern

After reviewing the charity's forecasts and projections, the directors have reasonable expectation that the charity has adequate resources to continue in operational existence for the foreseeable future. The charity therefore continues to adopt the going concern basis in preparing its financial statements.

1.2 Company status

The charity is a company limited by guarantee. The directors of the company are the trustees named on page 1. In the event of the charity being wound up, the liability in respect of the guarantee is limited to £1 per member of the charity.

1.3. Incoming resources

Incoming resources represents the total income receivable during the year comprising of donated income, income from events and bookings. All incoming resources are included in the Statement of Financial Activities when the charity is legally entitled to the income and the amount can be quantified with reasonable certainty.

1.4. Expenditure

All expenditure is included on an accruals basis and is inclusive of all VAT, which cannot be reclaimed, and is reported as part of the expenditure to which it relates:

- Charitable expenditure comprises those costs incurred by the charity in the delivery of its activities and services for its beneficiaries. It includes both costs that can be allocated directly to such activities and those costs of an indirect nature necessary to support them.
- Fundraising expenditure comprises those costs incurred by the charity for professional services in relation to the identification of potential funders and the preparation of grant applications in compliance with the Code of Fundraising Practice issued by the independent regulator of charitable fundraising in England, Wales and Northern Ireland.
- Governance costs include those costs associated with meeting the constitutional and statutory requirements of the charity and include the Independent Examiner's fees and costs linked to the strategic management of the charity.
- All costs are allocated directly, as such there are no support costs to apportion.

1.5. Funds

General funds are unrestricted funds which are available for use at the discretion of the Trustees in furtherance of the general objects of the charity and which have not been designated for other purposes.

Designated funds are funds set aside for specific purposes. The aim and use of the designated funds are set out in the notes to the Financial Statements.

Restricted funds are funds, which are to be used in accordance with specific restrictions imposed by the donor. The aim and use of the restricted funds are set out in the notes of the financial statements.

1.6. Tangible fixed assets and depreciation

Capital expenditure on items costing £2,000 or higher are recorded as tangible fixed assets. Tangible fixed assets are stated at cost valuation less depreciation.

Depreciation of equipment is provided on a straight-line basis at rates calculated to write off the cost or valuation less estimated residual of each asset over its expected useful life. The Herald Building is depreciated over a 25-year useful life; Kitchen equipment is depreciated over a three-year useful life; Alarm systems are depreciated over a ten-year useful life; Media equipment is depreciated over a five-year useful life; Camping equipment and Games equipment valued at less than £5,000 is fully depreciated in the year of acquisition.

1.7. Pensions

The Charity operates a defined contribution plan for its employees. A defined contribution plan is a pension plan under which the Charity pays fixed contributions into a separate entity. Once the contributions have been paid the Charity has no further payment obligations.

The contributions are recognised as an expense in the Income and Expenditure Account when they fall due. Amounts not paid are shown in accruals as a liability in the Balance Sheet. The assets of the plan are held separately from the Company in independently administered funds.

1.8. Taxation

The Chellington Centre is a registered charity and is not liable to Corporation Tax.

2. Incoming Resources from Charitable Activities

Incoming resources from charitable activities:	Unrestricted	Restricted	Total	Total
	2023	2023	2023	2022
	£	£	£	£
Voluntary Income				
Donations - Bursary Fund		1,750	1,750	300
Donation - Camping				12,946
Development				
Donations – New Building				313
Donations - Site Development				1,000
Donation - Edith Winifred Hall				15,600
Trust				
Donations - General	1,105		1,105	15,553
Other income (bank interest)	1,789	248	2,037	251
	<u>2,894</u>	<u>1,998</u>	<u>4,892</u>	
Bookings income				
Youth bookings	63,854		63,854	44,565
Non-youth bookings	70,332		70,332	64,186
	<u>134,186</u>		<u>134,186</u>	
Government funding				
Covid-19 grants				2,667
				<u>2,667</u>
Total incoming resources	<u>137,080</u>	<u>1,998</u>	<u>139,078</u>	<u>157,380</u>

Donations include associated Gift Aid of £63 (2022, £63) received from HMRC during the year.

3. Charitable Activities (including Governance Costs)

Resources expended	Unrestricted/ Designated 2023	Restricted 2023	Total 2023	Total 2022
	£	£	£	£
Fundraising costs				
Professional services				1,155
Charitable activities				
Direct costs of bookings	1,879		1,879	3,479
Staff & volunteer costs	64,256		64,256	59,541
Utilities, rent & rates	35,820		35,820	10,561
Insurance & alarms	5,115		5,115	4,458
Repairs, maintenance & renewals	12,787		12,787	8,155
Administration & marketing	8,604		8,604	5,624
Herald Building Depreciation	12,209		12,209	8,362
Bursaries		4,450	4,450	3,040
Site Development		4,394	4,394	10,575
Total cost of charitable activities	140,670	8,844	149,514	113,797
Total cost of resources expended	140,670	8,844	149,514	114,952

4. Governance Costs

	2023 £	2022 £
Governance costs		
Independent examiner's remuneration (included in Note 3)	900	900
Trustees' expenses	0	0
Total governance costs	900	900

5. Trustees' remuneration

The trustees received no remuneration (£2022: £nil) and received no reimbursements.

6. Staff Remuneration and numbers

	2023	2022
Staff remuneration	£	£
Wages and salaries	62,604	58,018
Pension costs	1,251	1,131
Total staff remuneration	63,856	59,149

The average number of full and part-time employees during the year were as follows:	2023	2022
Full time – Centre Manager	1.0	1.0
Part time – Assistant Managers (2), Reset Assistant	1.1	1.0
	2.1	2.0

No employees received emoluments of more than £60,000 per annum.

7. Tangible fixed assets

Tangible fixed assets	Herald Building	Alarm Systems	Camping Equipment	Other Equipment	Total
	£	£	£	£	£
Cost or valuation					
At 1 January 2023	313,583	11,365	3,076	6,998	335,023
Disposals					
Acquisitions				2,003	2,003
At 31 December 2023	313,583	11,365	3,076	9,001	337,026
Depreciation					
At 1 January 2023	8,362	1,326	3,076	6,551	19,315
Disposals					
Charge for year	12,209	1,137		745	14,091
At 31 December 2023	20,571	2,462	3,076	7,296	33,406
Net book value					
At 31 December 2022	305,221	10,039		447	315,707.69
At 31 December 2023	293,012	8,903		1,705	303,620

8. Creditors: amounts falling due within one year

	2023	2022
	£	£
Creditors: amounts falling due within one year		
Deferred booking income	24,129	20,060
Retention on building contract	6,811	6,811
Accruals	7,805	900
Pension payable	388	
Accounts payable	5,868	3,084
Barclaycard	736	342
Total creditors	45,737	31,196

9. Analysis of net assets between funds

Analysis of net assets between funds	Unrestricted Fund	Restricted Funds	Total Funds
	£	£	£
Tangible fixed assets	303,620	0	303,620
Current assets	98,287	18,802	117,090
Current liabilities	-38,926	-6,811	-45,737
Net assets at 31 December 2023	362,982	11,991	374,973
Tangible fixed assets	315,708	0	315,708
Current assets	75,250	25,649	100,899
Current liabilities	-24,385	-6,812	-31,196
Net assets at 31 December 2022	366,573	18,837	385,410

10. Movement in funds

	At 1-Jan- 2023 £	Incoming Resources £	Resources Expended £	Transfers £	At 31-Dec- 2023 £
Unrestricted funds					
General funds	366,572	137,080	140,670	-5,000	357,982
Designated funds				5,000	5,000
Total Unrestricted funds	366,572	137,080	140,670		362,982
Restricted funds					
Bursary	4,991	1,782	4,450		2,323
Site Development	13,846	216	4,394		9,668
Total restricted funds	18,838	1,998	8,844		11,991
Total Funds	385,410	139,078	149,514		374,973

Designated fund - The trustees have an objective of transferring £5,000 each year into a designated fund to establish a reserve to finance any future major spending that may be required on either of the properties at the Centre.

Bursary fund - The aim of the Chellington Bursary Fund is to make The Chellington Centre as accessible as possible, particularly for young people in areas of deprivation where funding is not easily available for residential activity. In 2023 nine Bursaries were awarded to a value of £4,450 (2022; ten awards to a value of £3,040). Three further awards were approved in 2023 to a value of £1,850 for events in 2024.

Site Development fund - This restricted funding was raised to upgrade the facilities at The Centre, including new alarm systems, upgrades to air-sourced heat pumps and general site improvements for the benefit of users of The Centre and camping facilities. Capitalised equipment has been transferred to unrestricted funds when brought into use.

THE CHELLINGTON CENTRE

England & Wales - Charity number 1156511

Accounts



(Incorporated as a Company Limited by Guarantee and not having a Share Capital)

**FINANCIAL STATEMENTS AND ANNUAL REPORT
FOR THE YEAR ENDED 31 DECEMBER 2022**

Contents

Contents	1
Reference and Administrative Details of The Charity, its Trustees and Advisers.....	2
Strategic Report.....	3
Overview	3
2023 Key Priorities.....	5
Treasurer's Report.....	12
Going Concern: Trading (unrestricted) account	12
Capital (restricted) accounts	12
2023 Financial Outlook.....	12
Governance Report	13
Independent Examiner's Report to the Members of The Chellington Centre	16
Income and Expenditure Account	17
Balance Sheet	18
Notes to the Financial Statements	19
1. Accounting policies.....	19
2. Incoming resources from charitable activities	21
3. Charitable activities (including Governance costs).....	22
4. Governance costs	22
5. Trustees remuneration.....	22
6. Staff remuneration and numbers	23
7. Tangible fixed assets.....	24
8. Creditors: amounts falling due within one year	25
9. Analysis of net assets between funds.....	26
10. Movements in funds.....	27

Reference and Administrative Details of The Charity, its Trustees and Advisers

Company number	08794342 (England and Wales)
Charity number	1156511 (England and Wales)
Board of trustees (Directors)	CHAMBERLAYNE, Edward Charles (Treasurer) – appointed 17.6.22 GILBERT, Sally Elizabeth HADFIELD, Peter Charles HAZELL, Martin Graeme - resigned 22.7.22 LESITER, Rachel Mary MIDDLEBROOK, Rev David John – appointed 29.7.22 SIMPSON, Helen Margaret TUSTING, James Charles TUSTING, John Robert (Interim Chair)
Independent examiner	Gavin Williams Premier FD Limited 51 Cardiff Road Dunstable Bedfordshire LU1 1PP
Bankers	Barclays Bank Plc 8 Market Street Wellingborough Northamptonshire NN8 1AP Cambridge & Counties Bank Charnwood Court New Walk Leicester LE1 6TE
Registered address	The Chellington Centre Felmersham Road Carlton Bedford MK43 7NA
Website	http://www.chellington.org

Strategic Report



Our mission is to provide an inspirational rural setting for young people to develop their personal potential

The Chellington Centre is an award winning, eco-friendly youth residential retreat - a base for exclusive-use learning, recreation and self-development in a beautiful, rural setting.

It is a place of expedition, inspiration and invigoration, particularly but not exclusively for young people, offering many opportunities to build self-confidence, reflect and celebrate life. A place of transformation.

Every year, we welcome thousands of overnight or day visitors from a diverse range of backgrounds, visiting with their schools, youth groups, families or through a charity.



“Chellington is uniquely able to create a magical reality, a space unto itself, the world as it should be. Having experienced it, when they return home, the young people can remember what they built for themselves at Chellington, and what can be built in their own community too.”

CEO of Advocacy Academy



Heralding a new chapter



Over the last few years, trustees and staff have worked hard to raise funds, gain permissions and manage the construction of the Herald Building. We were all delighted to celebrate the official opening of this much needed facility in May.

The new camping washrooms in the Herald Building increase the overall occupancy capacity on site to 66, with 36 indoors and 30 campers, and we enjoyed welcoming the first larger groups over the summer months.

Staff, volunteers and trustees are also enjoying their new office space in close proximity to the Centre after spending many years in the temporary office accommodation generously provided by Emmaus.

The trustees are extremely grateful to all those who have supported this major endeavor.



“We created an orienteering course around the village. The children worked as a team and had lots of outdoor experiences. With a night away they learnt how to look after themselves and all of the children came back, growing in confidence and becoming more rounded children. I believe that the children gained more from this venue than they can from any of the other residential providers.”

Assistant Head Teacher of St Matthews Primary School, Luton

2023 Key Priorities

1. Build community relationships that deliver life changing experiences at Chellington for disadvantaged young people
2. Raise awareness and funds for the Chellington Bursary Fund
3. Complete our expansion project
4. Host ethical weddings and premium events to underpin our running costs and fund youth programmes
5. Develop a long-term fundraising strategy to build financial resilience and future-proof the Charity



Build community relationships that deliver life changing experiences at Chellington for disadvantaged young people

The Chellington team strives to build community in three ways:

- The local community around Chellington, from which we draw volunteers who support the running and development of the Centre
- The community of groups and organisations that we engage with, who in turn are working within their own community to support identified needs
- The community that comes together at Chellington as part of a group's growing and learning experience

Enabling groups to achieve their outcomes for a visit to Chellington is key to our purpose, so that their stay is an integral part of their ongoing support and work with young people within their community.

Organisationally, we strive to build strong relationships with leaders that becomes more than resource provider and client, developing new opportunities for partnerships and ongoing use of the centre as part of their programmes.

Every group has its own objectives for their residential and young people have a range of needs. We want to see every child & young person impacted by their stay, showing increased confidence and recognising their own potential through engagement with the countryside that surrounds them. Time to reflect and discuss their experience and the environment they are in, and decide how they want to be when they return home.

The Centre enjoys high levels of repeat bookings from schools, religious youth groups, local authorities and youth charities looking to create opportunities for young people to step out of their normal lives and experience a different world at Chellington.

As well as supporting these returning groups in any way we can, we constantly strive to attract new groups - engaging with community networks and organisations in the area to identify with others how we can facilitate responses to needs and utilising our bursary scheme to support use of the centre whenever necessary.

Targeted marketing and development plans for the three key youth sectors (schools, youth charities and religious youth groups) have been designed to reach out and open up discussions about how the Chellington Centre Charity can help these communities change the lives of young people.



Raise awareness and funds for the Chellington Bursary



“Many of our children come from large families, often with two or three generations sharing a house. They come from hugely disadvantaged homes and going away overnight is something they can only dream of! The bursary makes this an affordable trip; it makes this trip possible!”

Head Teacher at Queen's Park Primary School, Bedford



The trustees believe that every young person should have the opportunity to have a life changing residential experience.

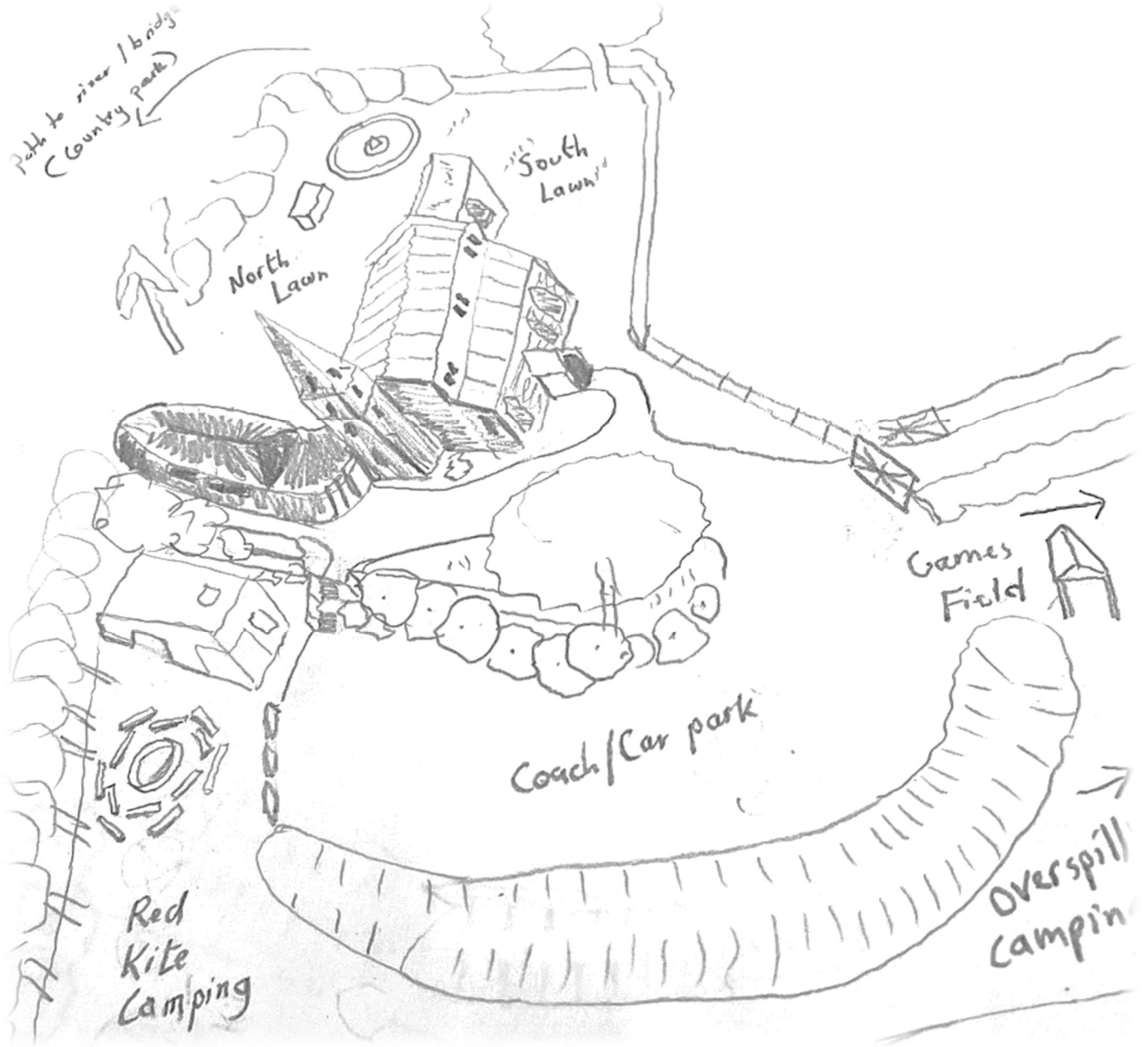
The Bursary Fund was set up to support this belief, offering financial support to school groups who find funding for a residential hard to access.

Typically, this might be:

- Schools/youth groups/other organisations working across areas of deprivation
- Groups that, by the nature of the need, would only use the centre for a small group
- Organisations working with young people with special educational needs
- Organisations working with people with physical disabilities

Raising funds for the Chellington Bursary Fund remains a strategic priority for the trustees, both to attract new, relevant youth organisations and to continue to meet our Charitable Objects, ensuring the Centre remains accessible to all, regardless of means.

Complete our expansion project



The creation of Red Kite camp means we can now cater for large groups of up to 66, utilising all the bunk and sofa bed accommodation inside the Centre and the tent pitches outside.

Thanks to the generosity of the Stewardship Foundation Ibbett Fund, we are close to raising all the funds needed to complete the final stage of our expansion project. This involves creating outdoor facilities for the campsite including a rustic log bench picnic /social area with shelter, cooking and catering equipment and a washing up area.

Achieve GOLD tourism award

Having received the silver award in recognition for our green credentials, we are working towards gold status. Among many other things, this involves the creation of a visitors' charter to encourage groups to embrace our commitment to green tourism.



“The time at Chellington allows children to forge new friendships, try new things, talk about things they wouldn't normally talk about at school. All these things help the children to develop their self-confidence and encourages them to experience different things. Many of our children do not leave Queens Park so experiencing being in the countryside is often a new concept!”

Head Teacher at Queen's Park Primary School, Bedford

Host ethical weddings and premium events to underpin our running costs and fund youth programmes

A key part of our fundraising strategy involves generating core income from hosting a limited number of ethical weddings and premium events at the Centre. Income from these events helps fund our operational costs as well as contributing directly to our youth programmes.



In addition to generating income, these events help to engage and educate the community on what goes on at the Centre and ways to support it.

Build financial resilience and future-proof the Charity

Since the creation of the Chellington Centre Charity at the end of 2013, the Chellington team has done much to build a first-class reputation for hosting residentials. Continuous efforts have been made to be self-sustaining financially through efficient management and with the help of many volunteers.

However, the Charity's mission to benefit the disadvantaged where possible through bursaries and concessions in fees will and must always remain a high priority. This results in the constant need to strike a careful balance between the focus on generating enough bookings income to finance the running costs and our commitment to supporting the disadvantaged youth people who sit at the very core of the Charity's objectives.

To date, the Charity has been extremely fortunate in receiving financial support from a number of key benefactors, responding with great generosity when called upon. However, Chellington lacks an endowment fund to provide financial security and therefore has no guaranteed fall-back resilience.

Over the next 5 years, as well as building financial reserves through the generation of bookings income and careful cost management, the Charity will seek to secure a future that achieves a longer-term level of financial resilience, working in partnership with other organisations sharing the same vision to improve the lives of disadvantaged young people.

“The children are constantly amazed by what they find here!”
Luton School

We are extremely grateful to the following donors for their generous support:

Edith Winifred Hall Trust
The Leathersellers Company
The Carlton Education Trust
Beatrice Laing Trust
Garfield Weston CT
The Bedfordshire Charitable Trust (formerly Ibbett)
Anson Trust
Mrs B L Robinson CT
John Apthorp CT
The Hobson Charity
Gale Family Trust

Treasurer's Report

Going Concern: Trading (unrestricted) account

2022 saw the return to more normal activity following the substantial effects of the Covid-19 pandemic on the two previous years. Bookings income of £108,751 exceeded the cost of our charitable activities which were £100,182, resulting in a surplus on charitable operations of £8,569. We also received a final element of local government pandemic related support of £2,667. In addition to this, we were fortunate to receive unrestricted donations amounting to £15,553, including £10,000 from the Wixamtree Trust and £5,000 from the Sylvia Adams Trust.

Free Cash

At the end of 2022, our available unrestricted cash reserves amounted to £50,865. This is an improvement on £13,449 in 2021 arising from a combination of a surplus on charitable operations (which is after deduction of a non-cash depreciation charge of £9,843), unrestricted donations and government support. As a result, free reserves are now above our target of 3 months' operating expenditure. The trustees remain confident that we are able to maintain the business as a going concern for the foreseeable future.

Operating Expenses

We continue to manage our operating costs to minimise our cost base wherever possible.

Capital (restricted) accounts

2022 saw the completion of the construction of the Herald Building. We received further donations towards the construction and related costs amounting to £15,913. The building was opened in May at which point the total costs of the project were capitalised and transferred to the unrestricted account with an opening book cost of £313,583. The building is being depreciated on a straight-line basis over a 25-year useful life.

During 2022, we have continued to raise funds for the ongoing development of the Centre (£13,946) and our Bursary Fund (£300). These funds will allow us to continue to support disadvantaged children and young people and complete the development of camping facilities.

2023 Financial Outlook

Forward Bookings

As of 31 December 2022, we have confirmed bookings for 2023 and beyond to the value of £74,871 (2021: £72,051), against which we hold deposits of £20,060 (2021: £21,846).

Like many businesses we are faced with a very substantial increase in our energy costs in 2023. We have raised our prices for use of the Centre as a result in order to recover some of these costs from our visitors. However, our operating budget for 2023 indicates a modest operating deficit for the year. The extent to which we will need to draw on our reserves to cover any shortfall will depend upon the amount of unrestricted donations and grants we receive during the year.

Our fundraising efforts will focus on raising funds for the Bursary Fund to enable more young people who would otherwise be unable to visit the Centre to benefit from what can offer.

Approved and authorised for issue by the Board of Trustees on 23rd March 2023 and signed on their behalf by:



Edward Chamberlayne – Treasurer

Governance Report

1. Structure

The Chellington Centre Charity was set up with the singular purpose of supporting and developing the work at the Chellington Centre.

The Charity was established as a registered charity on 2 April 2014 as the Chellington Centre, having been set up and incorporated as a company on 28 November 2013.

The governing document is the Memorandum and Articles of Association dated 21 November 2013, which were adopted by special resolution on the 13 March 2014.

In accordance with the Articles of Association, at least half the number of appointed directors reside within a 15-mile radius of the Chellington Centre.

2. Trustees

Martin Hazell resigned from the board midway through 2022 due to other commitments. We are extremely grateful to Martin for all he contributed.

We welcome Edward Chamberlayne to our Board of Trustees as our new Treasurer.

3. Mission and Charity's Objects

The provision, maintenance, organisation and management of The Chellington Centre to:

- 1) Advance education, particularly of the young,
- 2) Develop the physical, mental and spiritual capacities of those in need by reason of youth, age, ill health, disability, financial hardship or another disadvantage.

Our mission is to provide an inspirational and rural setting for young people to develop their personal potential

4. Bursary Fund

In furtherance of the Objects, but not for any other purpose, the Charity has established a bursary fund from which to provide bursaries to make the facilities of the Charity as accessible as possible to as wide a range of groups as possible.

5. Charity Governance Code for smaller charities

The Charity's Trustees have adopted the Charity Governance Code for smaller charities:

1. **Organisational purpose** - The board is clear about the charity's aims and ensure that these are being delivered effectively and sustainably.
2. **Leadership** - The board provides strategic leadership in line with the charity's aims and values. Full

trustee meetings are held at least quarterly to review financial results, policies and procedures and any issues of governance.

3. **Integrity** - The board acts with integrity, adopting values and creating a culture which help achieve the organisation's charitable purposes. The board is aware of the importance of the public's confidence and trust in charities, and trustees undertake their duties accordingly.
4. **Decision-making, risk and control** - The board makes sure that its decision-making processes are informed, rigorous and timely and that effective delegation, control and risk assessment and management systems are set up and monitored.

The Trustees have assessed the risks that the charity faces. The major financial risk is a reduction in occupation of the Centre. This risk is controlled by close monitoring of advance bookings and adjustment of budgeted spend for flexible costs, when required.

5. **Board effectiveness** - The board works as an effective team, using the appropriate balance of skills, experience, backgrounds and knowledge to make informed decisions.
6. **Diversity** - The board's approach to diversity supports its effectiveness, leadership and decision-making.
7. **Openness and accountability** - The board leads the organisation in being transparent and accountable.

6. Reserves policy

The Trustees have determined that, given the seasonality of income, it is appropriate that unrestricted free cash reserves at year end should be maintained to enable us to cover approximately three months' salaries and fixed operating expenditure.

Customer deposits and prepayments are held in a separate bank account until such time as occupancy takes place.

Restricted reserves are managed to ensure that they are maintained in separate bank accounts and are only applied for the purposes set out in the grant applications and donations.

7. Trustees' responsibilities to prepare financial statements

Charity law requires the Trustees to prepare financial statements for each financial year which give a true and fair view of the affairs of the charity and of the deficit or surplus of the charity for that year. In preparing those financial statements, the Trustees are required to:

- select suitable accounting policies and then apply them consistently,
- observe the methods and principles in the Charities SORP,
- make judgements and estimates that are reasonable and prudent,
- state whether applicable accounting standards have been followed, subject to any material departures disclosed and explained in the financial statements, and
- prepare the financial statements on the ongoing concern basis unless it is inappropriate to presume that the charity will continue in business.

The Trustees are responsible for keeping proper accounting records which disclose with reasonable accuracy at any time the financial position of the charity and to enable them to ensure that the financial statements comply with the Charities Act 2011. They are also responsible for safeguarding the assets of

the charity and hence for taking reasonable steps for the prevention and detection of fraud and other irregularities.

8. Independent Examiner

A proposal to reappoint Gavin Williams of Premier FD Limited as the Independent Examiner will be proposed at our forthcoming AGM and he has expressed a willingness to accept.

9. Approval

Approved and authorised for issue by the Board of Trustees on 23rd March 2023 and signed on their behalf by:

A handwritten signature in blue ink, appearing to read 'John Tusting'.

John Tusting – Interim Chair

Independent Examiner's Report to The Members of The Chellington Centre

I report to the trustees on my examination of the accounts of the above charity for the year ended 31 December 2022.

Responsibilities and basis of report

As the charity's trustees of the company (and its directors for the purposes of company law) you are responsible for the preparation of the accounts in accordance with the requirements of the Charities Act 2011 ('the Act').

I report in respect of my examination of the Charity's accounts carried out under section 145 of the 2011 Act and in carrying out my examination, I have followed all the applicable Directions given by the Charity Commission under section 145(5)(b) of the Act.

Independent examiner's statement

I have completed my examination. I confirm that no material matters have come to my attention in connection with the examination which gives me cause to believe that in, any material respect:

- the accounting records were not kept in accordance with section 130 of the Charities Act; or
- the accounts did not accord with the accounting records; or
- the accounts did not comply with the applicable requirements concerning the form and content of accounts set out in the Charities (Accounts and Reports) Regulations 2008 other than any requirement that the accounts give a 'true and fair' view which is not a matter considered as part of an independent examination.

I have no concerns and have come across no other matters in connection with the examination to which attention should be drawn in this report in order to enable a proper understanding of the accounts to be reached.



Gavin Williams FCA DChA
Premier FD Limited
51 Cardiff Road, Dunstable, Bedfordshire LU1 1PP
www.premier-fd.com

14th April 2023

Income & Expenditure Account

	Notes	Unrestricted 2022 £	Restricted 2022 £	Total 2022 £	Total 2021 £
Incoming resources from charitable activities:					
Voluntary income		15,587	30,375	45,962	181,515
Bookings income		108,751		108,751	56,367
Government funding		2,667		2,667	27,532
Total incoming resources	2	<u>127,004</u>	<u>30,375</u>	<u>157,380</u>	<u>265,414</u>
Resources expended					
Fundraising		578	578	1,155	5,775
Charitable activities	3 & 4	<u>100,182</u>	<u>13,615</u>	<u>113,797</u>	<u>95,685</u>
Total resources expended		<u>100,759</u>	<u>14,193</u>	<u>114,952</u>	<u>101,460</u>
Transfers	10	313,583	-313,583		
Net Movement in funds		339,829	-297,401	42,428	163,954
Reconciliation of funds					
Total funds brought forward		<u>26,744</u>	<u>316,238</u>	<u>342,982</u>	<u>179,028</u>
Total funds carried forward		<u>366,573</u>	<u>18,837</u>	<u>385,410</u>	<u>342,982</u>

All income and expenditures are derived from continuing activities.

All recognised gains and losses are included in the Statement of Financial Activities.

The notes on pages 19 to 27 form part of these financial statements

Balance Sheet

	Notes	2022		2021	
		£	£	£	£
Fixed assets					
Tangible fixed assets	7		315,708		11,968
Construction in Progress					232,902
Current assets					
Cash in hand and in bank		100,899		158,619	
Prepaid fire & security policy					
Accounts receivable				615	
		<u>100,899</u>		<u>159,234</u>	
Creditors: amounts falling due within one year	8	<u>-31,196</u>		<u>-61,122</u>	
Net current assets			<u>69,702</u>		<u>98,112</u>
Net assets			<u>385,410</u>		<u>342,982</u>
Funds					
Unrestricted fund			366,573		26,744
Restricted funds			<u>18,837</u>		<u>316,238</u>
Total funds			<u>385,410</u>		<u>342,982</u>

The notes on pages 19 to 27 form part of these financial statements.

For the financial year ended 31 December 2022 the charity was entitled to exemption from audit under section 477 Companies Act 2006. No member of the charity has deposited a notice, pursuant to section 476, requiring an audit of these financial statements under the requirements of the Companies Act 2006.

The directors acknowledge their responsibilities for ensuring that the charity keeps accounting records which comply with section 386 of the Act and for preparing financial statements which give a true and fair view of the state of affairs of the charity as at the end of the financial year and of its profit or loss for the financial year in accordance with the requirements of sections 394 and 395 and which otherwise comply with the requirements of the Companies Act 2006 relating to accounts, so far as applicable to the charity.

These financial statements have been prepared in accordance with the provisions applicable to companies subject to the small companies' regime within Part 15 of the Companies Act 2006.

Approved by the Board and authorised for issue on 23rd March 2023.



J Tusting – Interim Chair



Ed Chamberlayne – Treasurer

Registered company number: 08794342 (England and Wales)

Notes to the Financial Statements

1. Accounting Policies

1.1. Accounting convention

The financial statements are prepared in accordance with the Statement of Recommended Practice: Accounting and Reporting by Charities (SORP 2019 – FRS 102 version), applicable accounting standards and the Companies Act 2006. The charity has taken advantage of the Small Entity provisions of FRS 102. The financial statements are presented in Sterling (£).

Statement on going concern

After reviewing the charity's forecasts and projections, the directors have reasonable expectation that the charity has adequate resources to continue in operational existence for the foreseeable future. The charity therefore continues to adopt the going concern basis in preparing its financial statements.

1.2 Company status

The charity is a company limited by guarantee. The directors of the company are the trustees named on page 1. In the event of the charity being wound up, the liability in respect of the guarantee is limited to £1 per member of the charity.

1.3. Incoming resources

Incoming resources represents the total income receivable during the year comprising of donated income, income from events and bookings. All incoming resources are included in the Statement of Financial Activities when the charity is legally entitled to the income and the amount can be quantified with reasonable certainty.

1.4. Expenditure

All expenditure is included on an accruals basis and is inclusive of all VAT, which cannot be reclaimed, and is reported as part of the expenditure to which it relates:

- Charitable expenditure comprises those costs incurred by the charity in the delivery of its activities and services for its beneficiaries. It includes both costs that can be allocated directly to such activities and those costs of an indirect nature necessary to support them.
- Fundraising expenditure comprises those costs incurred by the charity for professional services in relation to the identification of potential funders and the preparation of grant applications in compliance with the Code of Fundraising Practice issued by the independent regulator of charitable fundraising in England, Wales and Northern Ireland.
- Governance costs include those costs associated with meeting the constitutional and statutory requirements of the charity and include the Independent Examiner's fees and costs linked to the strategic management of the charity.
- All costs are allocated directly, as such there are no support costs to apportion.

1.5. Funds

General funds are unrestricted funds which are available for use at the discretion of the Trustees in furtherance of the general objects of the charity and which have not been designated for other purposes.

Restricted funds are funds, which are to be used in accordance with specific restrictions imposed by the donor. The aim and use of the restricted funds are set out in the notes of the financial statements.

1.6. Tangible fixed assets and depreciation

Capital expenditure on items costing £2,000 or higher are recorded as tangible fixed assets. Tangible fixed assets are stated at cost valuation less depreciation.

Depreciation of equipment is provided on a straight-line basis at rates calculated to write off the cost or valuation less estimated residual of each asset over its expected useful life. The Herald Building is depreciated over a 25-year useful life; Kitchen equipment is depreciated over a three-year useful life; Alarm systems are depreciated over a ten-year useful life; Media equipment is depreciated over a five-year useful life; Camping equipment and Games equipment valued at less than £5,000 is fully depreciated in the year of acquisition.

1.7. Herald Building income, expenses and fixed assets

Restricted grants received towards the Peter Herald Building Project are recorded as Income when received UNLESS:

- a. The grant includes a provision for repayment of monies advanced, if the project does not go ahead AND
- b. There is a realistic expectation that the project will not proceed.

Accordingly, all monies received to date have been recorded as Income in the Financial Statements.

Following the resolution to proceed with the project, expenses to date (including planning application fees, professional fees relating to obtaining planning permission and to technical design, and expenses for site preparation) were capitalised as Restricted Construction in Progress in the Balance Sheet.

This Construction in Progress was held on the Restricted Balance Sheet as a fixed asset until the building was brought into use when it was transferred to the Unrestricted Balance Sheet and appropriate depreciation policies applied.

1.8. Pensions

The Charity operates a defined contribution plan for its employees. A defined contribution plan is a pension plan under which the Charity pays fixed contributions into a separate entity. Once the contributions have been paid the Charity has no further payment obligations.

The contributions are recognised as an expense in the Income and Expenditure Account when they fall due. Amounts not paid are shown in accruals as a liability in the Balance Sheet. The assets of the plan are held separately from the Company in independently administered funds.

1.9. Taxation

The Chellington Centre is a registered charity and is not liable to Corporation Tax.

2. Incoming Resources from Charitable Activities

Incoming resources from charitable activities:	Unrestricted	Restricted	Total	Total
	2022	2022	2022	2021
	£	£	£	£
Voluntary Income				
Donation - Edith Winifred Hall Trust		15,600	15,600	
Donation - Ibbett Trust		12,946	12,946	
Donations – New Building		313	313	138,221
Donations - Bursary Fund		300	300	3,970
Donations - Site Development		1,000	1,000	27,500
Donation - Sylvia Adams Trust	5,000		5,000	
Donation - Wimamtree Trust	10,000		10,000	
Donation – Gayle Family Trust				10,000
Donations - General	553		553	261
Other income (bank interest)	34	217	251	1,563
	15,587	30,375	45,962	181,515
Bookings income				
Youth bookings	44,565		44,565	24,735
Non-youth bookings	64,186		64,186	31,632
	108,751		108,751	56,367
Government funding				
Furlough credit				10,140
Covid-19 grants	2,667		2,667	17,392
	2,667		2,667	27,532
Total incoming resources	127,004	30,375	157,380	265,414

Donations include associated Gift Aid of £63 (2021, £6,324) received from HMRC during the year.

3. Charitable Activities (including Governance Costs)

Resources expended	Unrestricted	Restricted	Total	Total
	2022	2022	2022	2021
	£	£	£	£
Fundraising costs				
Professional services	578	578	1,155	5,775
Charitable activities				
Direct costs of bookings	3,479		3,479	2,332
Staff costs	59,065		59,065	54,919
Legal & professional fees	3,983		3,983	4,392
Advertising & marketing	2,019		2,019	1,600
Depreciation	9,843		9,843	534
Repairs & renewals - general	7,160		7,160	12,468
Repairs & renewals - restricted (net)		10,575	10,575	7,192
Rent, Rates and Utilities	10,562		10,562	7,706
Office & general costs	4,070		4,070	2,354
Bursaries		3,040	3,040	1,880
Herald building project (net)				308
Total cost of charitable activities	100,182	13,615	113,797	95,685
Total cost of resources expended	100,759	14,193	114,952	101,460

4. Governance Costs

	2022	2021
	£	£
Governance costs		
Independent examiner's remuneration (included in Note 3)	900	900
Trustees' expenses		
Total governance costs	900	900

5. Trustees' remuneration

The trustees received no remuneration (£2021: £nil) and received no reimbursements.

6. Staff Remuneration and numbers

	2022	2021
	£	£
Remuneration		
Wages and salaries	58,018	54,539
Accrued holiday pay	-84	-1,288
Social Security costs		344
Pension costs	1,131	1,324
Staff training		
Total staff remuneration	<u>59,065</u>	<u>54,919</u>

The average number of full and part-time employees during the year were as follows:

	2022	2021
Full time – Centre Manager	1.0	1.0
Part time – Business Development Manager		0.2
Part time – Assistant Managers (two)	1.0	0.6
Part time – Apprentice		0.3
	<u>2.0</u>	<u>2.1</u>

No employees received emoluments of more than £60,000 per annum.

Remuneration costs were not offset by HMRC furlough credits in 2022 (2021 – £10,140)

7. Tangible fixed assets

Tangible fixed assets	Herald Building	Alarm Systems	Camping Equipment	Other Equipment	Total
	£	£	£	£	£
Cost or valuation					
At 1 January 2022	232,902	11,365	3,076	6,998	254,341
Disposals					
Acquisitions	80,681				80,681
At 31 December 2022	313,583	11,365	3,076	6,998	335,022
Depreciation					
At 1 January 2022		189	3,076	6,206	9,472
Disposals					
Charge for year	8,362	1,137		345	9,844
At 31 December 2022	8,362	1,326	3,076	6,551	19,316
Net book value					
At 31 December 2021	232,902	11,176		792	244,870
At 31 December 2022	305,221	10,039		447	315,708

8. Creditors: amounts falling due within one year

	2022	2021
	£	£
Creditors: amounts falling due within one year		
Deferred booking income	20,060	21,846
Retention on building contract	6,811	9,816
Accruals	900	1,958
Rent payable		1,007
Accounts payable	3,084	26,233
Barclaycard	342	156
Holiday Pay		84
Expenses due		22
Total creditors	31,196	61,122

Deferred income relates to pre-payments for future bookings and includes £1,000 (2021: £600) of deferred deposits not yet rebooked.

9. Analysis of net assets between funds

Analysis of net assets between funds	Unrestricted Fund	Restricted Funds	Total Funds
	£	£	£
Tangible fixed assets	315,708	0	315,708
Current assets	75,250	25,649	100,899
Current liabilities	-24,385	-6,812	-31,196
Net assets at 31 December 2022	366,573	18,837	385,410
Tangible fixed assets	11,968	232,902	244,870
Current assets	41,137	118,097	159,234
Current liabilities	-26,361	-34,761	-61,122
Net assets at 31 December 2021	26,744	316,238	342,982

10. Movement in funds

	At 1-Jan-2022	Incoming Resources	Resources Expended	Transfers	At 31-Dec-2022
	£	£	£	£	£
Unrestricted general funds	26,744	127,004	100,759	313,583	366,573
Designated funds					
Restricted funds					
Bursary	7,730	301	3,040		4,991
Site Development	10,322	14,099	10,575		13,846
Herald Building	298,186	15,975	578	-313,583	0
Total restricted funds	316,238	30,375	14,193	-313,583	18,837
Total Funds	342,982	157,380	114,952		385,410

Bursary fund - The aim of the Chellington Bursary Fund is to make The Chellington Centre as accessible as possible, particularly for young people in areas of deprivation where funding is not easily available for residential activity. In 2022 ten Bursaries were awarded to a value of £3,0400 (2021; four awards to a value of £1,880). Two further awards were approved in 2022 to a value of £1,250 for events in 2023.

Herald Building fund - This restricted funding was raised to build the Herald Building, incorporating showers and toilet facilities to be made available to campers, an administrative hub for the Chellington team and much needed storage space for equipment. Construction was completed in 2022 and the build costs were capitalised and transferred to unrestricted funds.

Site Development fund - This restricted funding was raised to upgrade the facilities at The Centre, including new alarm systems, upgrades to air-sourced heat pumps and general site improvements for the benefit of users of The Centre and camping facilities. Capitalised equipment has been transferred to unrestricted funds when brought into use.

THE CHELLINGTON CENTRE

England & Wales - Charity number 1156511

Accounts

Company registration number (England and Wales): 08794342

Charity registration number (England and Wales): 1156511



 **the
Chellington
Centre**

(Incorporated as a Company Limited by Guarantee
and not having a Share Capital)

**FINANCIAL STATEMENTS AND ANNUAL REPORT
FOR THE YEAR ENDED 31 DECEMBER 2021**

Contents

Reference and Administrative Details of The Charity, Its Trustees and Advisers	1
Strategic Report	2
Overview.....	2
2022 Key Priorities.....	4
Treasurer’s Report	9
Going Concern: Trading (unrestricted) account	9
Capital (restricted) accounts.....	9
2022 Financial Outlook.....	9
Governance Report	10
Independent Examiner’s Report to The Members of The Chellington Centre	12
Income and Expenditure Account.....	13
Balance Sheet.....	14
Notes to the Financial Statements.....	15
1. Accounting policies.....	15
2. Incoming resources from charitable activities.....	17
3. Charitable activities (including Governance costs).....	18
4. Governance costs	18
5. Trustees remuneration.....	18
6. Staff remuneration and numbers	19
7. Tangible fixed assets.....	19
8. Creditors: amounts falling due within one year	20
9. Analysis of net assets between funds.....	20
10. Movements in funds.....	21
Acknowledgements.....	22

Reference and Administrative Details of The Charity, Its Trustees and Advisers

Company number	08794342 (England and Wales)
Charity number	1156511 (England and Wales)
Board of trustees (Directors) (shown in order at Companies House)	CATCHPOLE, Claire (Interim Chair) (resigned 31 December 2021) GILBERT, Sally Elizabeth HADFIELD, Peter (appointed 12 March 2021) HAZELL, Martin Graeme (Treasurer) LESITER, Rachel Mary TUSTING, James Charles TUSTING, John Robert (Interim Chair)
Independent examiner	Gavin Williams Premier FD Limited 87, The Parklands, Dunstable LU5 4GW
Bankers	Barclays Bank Plc 8 Market Street Wellingborough Northamptonshire NN8 1AP Cambridge & Counties Bank Charnwood Court New Walk Leicester LE1 6TE
Registered address	The Chellington Centre Felmersham Road Carlton Bedford MK43 7NA
Website	http://www.chellington.org

Strategic Report

Overview

Our mission is to provide an inspirational and rural setting for young people to develop their personal potential

The Chellington Centre is an award winning, eco-friendly youth residential retreat, providing a base for exclusive-use learning, recreation and self-development in a rural environment.

It is a place of expedition, contemplation, inspiration and invigoration, particularly but not exclusively for young people, providing many opportunities to build self-confidence and to reflect and celebrate life in a beautiful, rural setting. A place of transformation.

In recent years, notwithstanding the unavoidable impact of the pandemic, the Centre has enjoyed significant growth in occupancy levels, welcoming over 5,000 overnight or day visitors to the Centre each year.

2021 marked an exciting year for the Chellington Centre Charity as construction of the new Herald Building commenced. Government restrictions forced the closure of the main building for the first part of the year resulting in the inevitable loss of bookings income but, once allowed to re-open, life at the Centre flourished.

Welcoming both new and familiar faces



We were delighted to host secondary school field trips this year as well as a growing number of primary schools and a whole range of religious groups and charities working with young people.

Construction of the Herald Building

Our vision for the future of the Chellington Centre moved closer to reality in 2021 with the construction of our new "Herald Building" adjacent to the Centre.



The creation of the Herald Building achieves multiple objectives, increasing the overall occupancy capacity on site to 60 through the addition of washroom facilities to support camping, and providing a much-needed permanent workplace for paid and voluntary team members to work from when the Centre is in use.

This long-awaited addition will increase the sustainability of the Charity and maximise the input from all concerned in providing the highest quality experience for young people at the Centre.

The Herald Building project is on target for a completion date at the end of February 2022. The trustees are extremely grateful to all those who have supported this major endeavour.

2022 Key Priorities

- 1) Continue to build community relationships that will deliver life changing experiences at Chellington for disadvantaged young people
- 2) Raise awareness and funds for the Chellington Bursary Fund
- 3) Complete our expansion project
- 4) Host weddings and premium events to underpin our running costs and fund youth programmes
- 5) Achieve GOLD green tourism award
- 6) Plan for financial resilience and future-proof the Charity

1. Continue to build community relationships that will deliver life changing experiences at Chellington for disadvantaged young people

“Chellington is uniquely able to create a magical reality, a space unto itself, the world as it should be. Having experienced it, when they return home, the young people can remember what they built for themselves at Chellington, and what can be built in their own community too.”

Amelia Viney, CEO of Advocacy Academy

The Chellington team strives to build community in three ways:

- The local community around Chellington, from which we draw volunteers who support the running and development of the Centre
- The community of groups and organisations that we engage with, who in turn are working within their own community to support identified needs
- The community that comes together at Chellington as part of a group's growing and learning experience



The Centre experiences high levels of repeat bookings from schools, religious youth groups, local authorities and youth charities looking to create opportunities for young people to step out of their normal lives and experience a different world at Chellington.

Working with groups to plan their visit is key to meeting our outcomes. Every group has its own objectives for their residential and young people have a range of needs. We want to see every child & young person impacted by their stay, showing increased confidence and recognising their own potential through engagement with the big outdoors which surrounds them. Time to reflect and discuss their experience and the environment they are in, and decide how they want to be when they return home.

Enabling groups to achieve their outcomes for a visit to Chellington is key to our purpose, so that their stay is an integral part of their ongoing support and work with young people within their community. Organisationally, we strive to build strong relationships with leaders that becomes more than resource provider and client, developing new opportunities for partnerships and ongoing use of the centre as part of their programmes.

We will continue to develop new partnerships by engaging further with community networks and organisations in the area, building strong relationships, supporting groups to plan for an effective stay at the centre, identifying with others how we can facilitate responses to needs and utilising our bursary scheme to support use of the centre whenever necessary.

Targeted marketing and development plans for the three key youth sectors (schools, youth charities and religious youth groups) will engage with these communities to further increase youth occupancy levels and income in 2022/3.

2. Raise awareness and funds for the Chellington Bursary Fund

"Many of our children come from large families, often with two or three generations sharing a house. They come from hugely disadvantaged homes and going away overnight is something they can only dream of! The bursary makes this an affordable trip; it makes this trip possible!"

Head Teacher at Queen's Park Primary School, Bedford

This crucial aspect of the Charity's work becomes all the more important in the aftermath of the pandemic.

We continue to seek additional funds to build up the Chellington Centre Bursary Fund in order to offer financial support to organisations that can deliver life changing experiences at Chellington for disadvantaged young people.



Typically, this might be:

- Schools/youth groups/other organisations working across areas of deprivation
- Groups that, by the nature of the need, would only use the centre for a small group
- Organisations working with young people with special educational needs
- Organisations working with people with physical disabilities

Raising funds for the Chellington Bursary Fund remains a strategic priority for the trustees, both to attract new, relevant youth organisations and to continue to meet our Charitable Objects, ensuring the Centre remains accessible to all, regardless of means.



3. Complete our expansion project

Herald Building

The building stage of our expansion project is scheduled for completion at the end of February 2022 including the provision of washroom facilities for campers, an administrative hub for the Chellington team and much needed storage space for equipment.

Staff, volunteers and trustees will enjoy operating from a permanent base in close proximity to the Centre after spending many years in the temporary office accommodation, 1.5 miles away, generously provided by Emmaus. This new administrative hub will maximise the input from all concerned in providing the highest quality experience for young people at the Centre.



Camping at 'Red Kite'

Known as 'Red Kite' camp, this area will be our primary camping space, accommodating 13 small tent pitches for up to 30 young people. This camp site will be well-placed to utilise the washroom facilities in the Herald Building and will have its own cooking, campfire and social area.

To furnish the outdoor facilities for campers, we are raising funds in two phases for the following:

Red Kite Camping - Phase 1		Red Kite Camping - Phase 2	
Ground levelled for camping area	£3,600	Fencing for safeguarding	£1,500
Cooking area blocks and fire pit	£750	Shelter for outdoor dining/social area	£1,094
New campfire seating	£928	Picnic tables	£1,500
Exterior lighting around camping	£2,400	Vandal proof drinking water fountain	£425
New hedgerows and trees	FOC	Signage	£500
Vandal proof washing up trough	£175	Bike racks	£74
TOTAL Phase 1	£7,853	TOTAL Phase 2	£5,093



The creation of Red Kite camp will allow us to cater for large groups of up to 60, utilising all the bunk and sofa bed accommodation inside the Centre and the tent pitches outside.

Booking availability will be set up with the option for a large group to take over the entire site including the Centre and campsite or for Red Kite to host an independent smaller camping group such as DofE expeditions, mid-week and at weekends, without disturbing the integrity of a Centre-based group.

4. Host weddings and premium events at Chellington



A key part of our fundraising strategy involves generating core income from hosting a limited number of ethical weddings and premium events at the Centre. Income from these events helps fund our operational costs as well as contributing directly to our youth programmes.



In addition to generating income, these events help to engage and educate the community on what goes on at the Centre and in ways to support it.

5. Achieve GOLD green tourism award

Having received the silver award in recognition for our green credentials, we are working towards gold status. Among many other things, this involves the creation of a visitors' charter to encourage groups to embrace our commitment to green tourism.

6. Plan for financial resilience and future-proof the Charity

Since the creation of the Chellington Centre Charity at the end of 2013, the Chellington team has done much to build a first-class reputation for hosting residentials. Continuous efforts have been made to be self-sustaining financially through efficient management and with the help of many volunteers.

However, the Charity's mission to benefit the disadvantaged where possible through bursaries and concessions in fees will and must always remain a high priority. This results in the constant need to strike a careful balance between the focus on generating enough bookings income to finance the running costs and our emphatic priority to support the disadvantaged youth people who sit at the very core of the Charity's objectives.

Chellington lacks an endowment fund to provide financial security and therefore has no guaranteed fall-back resilience. To date, the Charity has been extremely fortunate in receiving financial support from a number of key benefactors, responding with great generosity when called upon.

Over the next 5 years, as well as building financial reserves through the generation of bookings income and careful cost management, the Charity will seek to secure a future that achieves a longer-term level of financial resilience, working in partnership with other organisations sharing the same vision to improve the lives of disadvantaged young people.



Approved and authorised for issue by the Board of Trustees on 4 February 2022 and signed on their behalf by:



R Lesiter - Director

Treasurer's Report

Going Concern: Trading (unrestricted) account

2021 has been a year of two halves. At the start of the year we were closed due to the Covid-19 pandemic, while in the second half we have been able to re-open and have traded with a small operating surplus. We are fortunate to have received Grants and Donations totalling £37,796 to help fill the income gap caused by the forced closure of the Centre and to start rebuilding our unrestricted reserves in the latter part of the year.

- An unrestricted grant of £10,000 each was received from The Gale Family Trust in January, ensuring that we maintained positive unrestricted cashflow in the early part of the year,
- Grants totalling £17,392 were received from Bedford Borough Council under Government Support Schemes to cover costs during shutdowns,
- Government Support for furloughed staff totalling £10,261 was received from HMRC enabling us to furlough staff on a part time basis and maintain their employment through the pandemic,
- Further private donations (including Gift Aid and bank interest) totalling £143 were received from local benefactors wishing to support the sustainability of The Centre through the present crisis.

Free Cash

At the end of 2021, our available unrestricted cash reserves amount to £13,449. This is an improvement on £5,367 in 2020 but is still below our reserves policy. The trustees remain confident that we are able to maintain the business as a going concern for the foreseeable future.

Operating Expenses

We continue to manage our operating costs to minimise our cost base wherever possible

Capital (restricted) accounts

During 2021 we have continued to raise funds for our Bursary (£3,970), The Herald Building (£138,211) and the ongoing development of the Centre (£27,500). These funds will allow us to continue to support disadvantaged children and young people and complete the construction of the Herald Building as a foundation for the development of camping facilities. These funds have also enabled us to replace the Fire and Security protection systems in the Centre (£5,365 in addition to the £6,000 previously Designated funds) and replace one of our aging air sourced heat pumps (£7,193) to ensure that the Centre can continue to be heated adequately.

2022 Financial Outlook

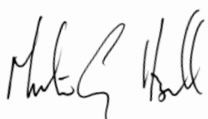
Forward Bookings

As of 31 December 2021, we have confirmed bookings for 2022 and beyond to the value of £72,051 (2020: £51,960), against which we hold deposits of £21,846 (2020:£18,551).

Our operating budget for 2022 indicates further rebuilding of our free cash reserves through operational performance, and we continue to seek out unrestricted grants to help us regain our policy level of free cash.

In addition our fund raising efforts will continue to support our plans for developing camping at The Centre, and individual projects will be released as and when funding is achieved.

Approved and authorised for issue by the Board of Trustees on 4 February 2022 and signed on their behalf by:



M Hazell - Treasurer

Governance Report

1. Structure

The Chellington Centre charity was set up with the singular purpose of supporting and developing the work at the Chellington Centre.

The Charity was established as a registered charity on 2 April 2014 as the Chellington Centre, having been set up and incorporated as a company on 28 November 2013.

The governing document is the Memorandum and Articles of Association dated 21 November 2013, which were adopted by special resolution on the 13 March 2014.

In accordance with the Articles of Association, at least half the number of appointed directors reside within a 15-mile radius of the Chellington Centre.

2. Trustees

At the end of 2021 our interim Chair, Claire Catchpole resigned due to taking up a new position at work. Her insights, experience and dedication will be sorely missed.

We welcome Peter Hadfield as a new Trustee. Peter brings valuable experience in building maintenance to the team.

3. Mission and Charity's Objects



Our mission is to provide an inspirational and rural setting for young people to develop their personal potential

The Provision, maintenance, organisation and management of The Chellington Centre to:

- 1) Advance education, particularly of the young,
- 2) Develop the physical, mental and spiritual capacities of those in need by reason of youth, age, ill health, disability, financial hardship or another disadvantage.

4. Bursary fund

In furtherance of the Objects but not for any other purpose the Charity has established a bursary fund from which to provide bursaries to make the facilities of the Charity as accessible as possible to as wide a range of groups as possible.

5. Charity Governance Code for smaller charities

The Charity's Trustees have adopted the Charity Governance Code for smaller charities:

1. Organisational purpose - The board is clear about the charity's aims and ensure that these are being delivered effectively and sustainably.

2. Leadership - The board provides strategic leadership in line with the charity's aims and values. Full trustee meetings are held quarterly to review financial results, policies and procedures and any issues of governance. In addition, the board holds a monthly strategic review to monitor progress on strategic actions and to ensure appropriate action is taken. A separate buildings committee, under the chairmanship of a Trustee, meets as required to review progress and actions regarding the New Building project, and the maintenance and physical security of the Chellington Centre buildings.

3. Integrity - The board acts with integrity, adopting values and creating a culture which help achieve the organisation's charitable purposes. The board is aware of the importance of the public's confidence and trust in charities, and trustees undertake their duties accordingly.

4. Decision-making, risk and control - The board makes sure that its decision-making processes are informed, rigorous and timely and that effective delegation, control and risk assessment and management systems are set up and monitored.

The Trustees have assessed the risks that the charity faces. The major financial risk is a reduction in occupation of the Centre. This risk is controlled by close monitoring of advance bookings and adjustment of budgeted spend for flexible costs, when required.

5. Board effectiveness - The board works as an effective team, using the appropriate balance of skills, experience, backgrounds and knowledge to make informed decisions.

6. Diversity - The board's approach to diversity supports its effectiveness, leadership and decision-making.

7. Openness and accountability - The board leads the organisation in being transparent and accountable.

6. Reserves policy

The Trustees have determined that, given the seasonality of income, it is appropriate that unrestricted free cash reserves at year end should be maintained to enable us to cover approximately three months salaries and fixed operating expenditure.

Customer deposits and prepayments are held in a separate bank account until such time as occupancy takes place.

Restrictive reserves are managed to ensure that they are maintained in separate bank accounts and are only applied for the purposes set out in the grant applications and donations.

7. Trustees' responsibilities to prepare financial statements

Charity law requires the Trustees to prepare financial statements for each financial year which give a true and fair view of the affairs of the charity and of the deficit or surplus of the charity for that YEAR. In preparing those financial statements, the Trustees are required to:

- select suitable accounting policies and then apply them consistently,
- observe the methods and principles in the Charities SORP,
- make judgements and estimates that are reasonable and prudent,
- state whether applicable accounting standards have been followed, subject to any material departures disclosed and explained in the financial statements, and
- prepare the financial statements on the ongoing concern basis unless it is inappropriate to presume that the charity will continue in business.

The Trustees are responsible for keeping proper accounting records which disclose with reasonable accuracy at any time the financial position of the charity and to enable them to ensure that the financial statements comply with the Charities Act 2011. They are also responsible for safeguarding the assets of the charity and hence for taking reasonable steps for the prevention and detection of fraud and other irregularities.

8. Independent Examiner

A proposal to reappoint Gavin Williams of Premier FD Limited as the Independent Examiner will be proposed at our forthcoming AGM and they have expressed a willingness to accept.

9. Approval

Approved and authorised for issue by the Board of Trustees on 4 February 2022 and signed on their behalf by:



John Tusting – Interim Chair

Independent Examiner's Report to The Members of The Chellington Centre

Responsibilities and basis of report

I report to the trustees on my examination of the accounts of the above charity for the year ended 31 December 2021.

As the charity's trustees of the company (and its directors for the purposes of company law) you are responsible for the preparation of the accounts in accordance with the requirements of the Charities Act 2011 ('the Act').

I report in respect of my examination of the Charity's accounts carried out under section 145 of the 2011 Act and in carrying out my examination, I have followed all the applicable Directions given by the Charity Commission under section 145(5)(b) of the Act.

Independent examiner's statement

I have completed my examination. I confirm that no material matters have come to my attention in connection with the examination which gives me cause to believe that in, any material respect:

- the accounting records were not kept in accordance with section 130 of the Charities Act; or
- the accounts did not accord with the accounting records; or
- the accounts did not comply with the applicable requirements concerning the form and content of accounts set out in the Charities (Accounts and Reports) Regulations 2008 other than any requirement that the accounts give a 'true and fair' view which is not a matter considered as part of an independent examination.

I have no concerns and have come across no other matters in connection with the examination to which attention should be drawn in this report in order to enable a proper understanding of the accounts to be reached.



Gavin Williams FCA DChA

Premier FD Limited
87, The Parklands, Dunstable LU5 4GW
www.premier-fd.com
5 February 2022

Income and Expenditure Account

	Notes	Unrestricted /Designated	Restricted	Total	Total
		2021	2021	2021	2020
		£	£	£	£
Incoming resources from charitable activities:					
Voluntary income		10,264	171,251	181,515	77,731
Bookings income		56,367		56,367	24,270
Government funding		27,532		27,532	40,401
Total incoming resources	2	94,163	171,251	265,414	142,402
Resources expended					
Fundraising			5,775	5,775	8,855
Charitable activities	3 & 4	86,305	9,380	95,685	89,501
Total resources expended		86,305	15,155	101,460	98,356
Transfers	10	5,365	-5,365		
Net Movement in funds		13,223	150,731	163,954	44,046
Reconciliation of funds					
Total funds brought forward		13,521	165,507	179,028	134,982
Total funds carried forward		26,744	316,238	342,982	179,028

All income and expenditures are derived from continuing activities.

All recognised gains and losses are included in the Statement of Financial Activities.

The notes on pages 15 to 21 form part of these financial statements

Balance Sheet

	Notes	2021		2020	
		£	£	£	£
Fixed assets					
Tangible fixed assets	7		11,968		1,136
Construction in Progress			232,902		14,040
Current assets					
Cash in hand and in bank		158,619		192,436	
Prepaid fire & security policy				1,018	
Accounts receivable		615			
		159,234		193,454	
Creditors: amounts falling due within one year	8	-61,122		-29,602	
Net current assets			98,112		163,852
Net assets			342,982		179,028
Funds					
Unrestricted fund			26,744		7,521
Designated fund					6,000
Restricted funds			316,238		165,507
Total funds			342,982		179,028

The notes on pages 15 to 21 form part of these financial statements.

For the financial year ended 31 December 2021 the charity was entitled to exemption from audit under section 477 Companies Act 2006. No member of the charity has deposited a notice, pursuant to section 476, requiring an audit of these financial statements under the requirements of the Companies Act 2006.

The directors acknowledge their responsibilities for ensuring that the charity keeps accounting records which comply with section 386 of the Act and for preparing financial statements which give a true and fair view of the state of affairs of the charity as at the end of the financial year and of its profit or loss for the financial year in accordance with the requirements of sections 394 and 395 and which otherwise comply with the requirements of the Companies Act 2006 relating to accounts, so far as applicable to the charity.

These financial statements have been prepared in accordance with the provisions applicable to companies subject to the small companies' regime within Part 15 of the Companies Act 2006.

Approved by the Board of Trustees and authorised for issue on 4 February 2022:



J Tusting – Interim Chair



M Hazell - Treasurer

Registered company number: 08794342 (England and Wales)

Notes to the Financial Statements

1. Accounting policies

1.1. Accounting convention

The financial statements are prepared in accordance with the Statement of Recommended Practice: Accounting and reporting by charities (SORP 2019 – FRS 102 version), applicable accounting standards and the Companies Act 2006. The charity has taken advantage of the Small Entity provisions of FRS 102. The financial statements are presented in Sterling (£).

Statement on going concern

After reviewing the charity's forecasts and projections, the directors have reasonable expectation that the charity has adequate resources to continue in operational existence for the foreseeable future. The charity therefore continues to adopt the going concern basis in preparing its financial statements.

1.2. Company status

The charity is a company limited by guarantee. The directors of the company are the trustees named on page 1. In the event of the charity being wound up, the liability in respect of the guarantee is limited to £1 per member of the charity.

1.3. Incoming resources

Incoming resources represents the total income receivable during the year comprising of donated income, income from events and bookings. All incoming resources are included in the Statement of Financial Activities when the charity is legally entitled to the income and the amount can be quantified with reasonable certainty.

1.4. Expenditure

All expenditure is included on an accruals basis and is inclusive of all VAT, which cannot be reclaimed, and is reported as part of the expenditure to which it relates:

- Charitable expenditure comprises those costs incurred by the charity in the delivery of its activities and services for its beneficiaries. It includes both costs that can be allocated directly to such activities and those costs of an indirect nature necessary to support them.
- Fundraising expenditure comprises those costs incurred by the charity for professional services in relation to the identification of potential funders and the preparation of grant applications in compliance with the Code of Fundraising Practice issued by the independent regulator of charitable fundraising in England, Wales and Northern Ireland.
- Governance costs include those costs associated with meeting the constitutional and statutory requirements of the charity and include the Independent Examiner's fees and costs linked to the strategic management of the charity.
- All costs are allocated directly, as such there are no support costs to apportion.

1.5. Funds

General funds are unrestricted funds which are available for use at the discretion of the Trustees in furtherance of the general objects of the charity and which have not been designated for other purposes.

Designated funds are set aside by the Trustees for specific purposes. The aim and use of the designated funds are set out in the notes of the financial statements.

Restricted funds are funds, which are to be used in accordance with specific restrictions imposed by the donor. The aim and use of the restricted funds are set out in the notes of the financial statements.

1.6. Tangible fixed assets and depreciation

Capital expenditure on items costing £2,000 or higher are recorded as tangible fixed assets. Tangible fixed assets are stated at cost valuation less depreciation.

Depreciation of equipment is provided on a straight-line basis at rates calculated to write off the cost or valuation less estimated residual of each asset over its expected useful life. Kitchen equipment is depreciated over a three-year useful life; Alarm systems are depreciated over a ten-year useful life; Media equipment is depreciated over a five-year useful life; Camping equipment and Games equipment valued at less than £5,000 is fully depreciated in the year of acquisition.

1.7. Herald Building and camping development income, expenses and fixed assets

Restricted grants received towards the Peter Herald Building and Camping Development Projects are recorded as Income when received UNLESS:

- a. The grant includes a provision for repayment of monies advanced, if the project does not go ahead AND
- b. There is a realistic expectation that the project will not proceed.

Accordingly, all monies received to date have been recorded as Income in the Financial Statements.

Following the resolution to proceed with the project, expenses to date (including planning application fees, professional fees relating to obtaining planning permission and to technical design, and expenses for site preparation) have been capitalised as Restricted Construction in Progress in the Balance Sheet.

This Construction in Progress will be held on the Restricted Balance Sheet as a fixed asset until the building is brought into use when it will be transferred to the Unrestricted Balance Sheet and appropriate depreciation policies applied.

1.8. Pensions

The Charity operates a defined contribution plan for its employees. A defined contribution plan is a pension plan under which the Charity pays fixed contributions into a separate entity. Once the contributions have been paid the Charity has no further payment obligations.

The contributions are recognised as an expense in the Income and Expenditure Account when they fall due. Amounts not paid are shown in accruals as a liability in the Balance Sheet. The assets of the plan are held separately from the Company in independently administered funds.

1.9. Taxation

The Chellington Centre is a registered charity and is not liable to Corporation Tax.

2. Incoming resources from charitable activities

Incoming resources from charitable activities:	Unrestricted /Designated	Restricted	Total	Total
	2021	2021	2021	2020
	£	£	£	£
Voluntary Income				
Donation – Carlton Education Trust				20,000
Donation - Gale Family Trust	10,000		10,000	
Donations – New Building		138,221	138,221	46,913
Donations - Bursary Fund		3,970	3,970	3,028
Donations - Site Development		27,500	27,500	
Donations - General	261		261	6,875
Income from fund raising events				269
Other income (bank interest)	3	1,560	1,563	646
	10,264	171,251	181,515	77,731
Bookings income				
Youth bookings	24,735		24,735	12,175
Non-youth bookings	31,632		31,632	12,095
	56,367		56,367	24,270
Government funding				
Apprentice rebate				1,000
Furlough credit	10,140		10,140	27,400
Covid-19 grants	17,392		17,392	12,001
	27,532		27,532	40,401
Total incoming resources	94,163	171,251	265,414	142,402

Donations include associated Gift Aid of £6,324, (2020, £1,895) received from HMRC during the year.

Income from fund raising events is shown net of any associated direct costs.

3. Charitable activities (including Governance costs)

Resources expended	Unrestricted /Designated	Restricted	Total	Total
	2021	2021	2021	2020
	£	£	£	£
Fundraising costs				
Professional services		5,775	5,775	8,855
Charitable activities				
Direct costs of bookings	2,332		2,332	1,487
Staff costs	54,919		54,919	67,708
Legal & professional fees	4,392		4,392	4,758
Advertising & marketing	1,600		1,600	1,053
Repairs & renewals - general	13,002		13,002	10,963
Repairs & renewals - restricted (net)		7,192	7,192	
Rent, Rates and Utilities	7,706		7,706	8,939
Office & general costs	2,354		2,354	3,176
Bursaries		1,880	1,880	150
Herald building project (net)		308	308	-8,733
Total cost of charitable activities	86,305	9,380	95,685	89,501
Total cost of resources expended	86,305	15,155	101,460	98,356

4. Governance costs

	2021	2020
	£	£
Governance costs		
Independent examiner's remuneration (included in Note 3)	900	900
Trustees' expenses		
Total governance costs	900	900

5. Trustees remuneration

The trustees received no remuneration (2020: £nil) and received no reimbursements (2020: £nil).

6. Staff remuneration and numbers

	2021	2020
Remuneration	£	£
Wages and salaries	54,539	64,191
Accrued holiday pay	-1,288	1,012
Social Security costs	344	1,202
Pension costs	1,324	1,259
Staff training		44
Total staff remuneration	54,919	67,708
The average number of full and part-time employees during the year were as follows:	2021	2020
Full time – Centre Manager	1.0	1.0
Part time – Business Development Manager	0.2	0.7
Part time – Assistant Managers (two)	0.6	0.4
Part time – Apprentice	0.3	0.4
	2.1	2.5

No employees received emoluments of more than £60,000 per annum.

Remuneration costs were offset by HMRC furlough credits of £10,140 (2020 – £27,400) and Apprentice rebate of £nil (2020 – £1,000)

7. Tangible fixed assets

Tangible fixed assets	Herald Building	Alarm Systems	Camping Equipment	Other Equipment	Total
	£	£	£	£	£
Cost or valuation					
At 1 January 2021	14,040		3,076	7,666	24,782
Disposals				-667	-667
Acquisitions	218,862	11,365			230,227
At 31 December 2021	232,902	11,365	3,076	6,999	254,342
Depreciation					
At 1 January 2021			3,076	6,530	9,606
Disposals				-667	-667
Charge for year		189		439	533
At 31 December 2021		189	3,076	6,207	9,472
Net book value					
At 31 December 2020	14,040			1,136	15,176
At 31 December 2021	232,902	11,176		792	244,870

8. Creditors: amounts falling due within one year

	2021	2020
Creditors: amounts falling due within one year	£	£
Deferred booking income	21,846	23,465
Retention on building contract	9,816	
Accruals	1,958	1,922
Rent payable	1,007	800
Accounts payable	26,233	1,155
Barclaycard	156	101
HMRC – PAYE		787
Holiday Pay	84	1,372
Expenses due	22	
Total creditors	61,122	29,602

Deferred income relates to pre-payments for future bookings and includes £600 (2020: £4,914) of deferred deposits not yet rebooked.

9. Analysis of net assets between funds

Analysis of net assets between funds	Unrestricted Fund	Designated Fund	Restricted Funds	Total Funds
	£	£	£	£
Tangible fixed assets	11,968		232,902	244,870
Current assets	41,137		118,097	159,234
Current liabilities	-26,361		-34,761	-61,122
Net assets at 31 December 2021	26,744		316,238	342,982
Tangible fixed assets	1,136		14,040	15,176
Current assets	35,987	6,000	151,467	193,454
Current liabilities	-29,602		-	-29,602
Net assets at 31 December 2020	7,521	6,000	165,507	179,028

10. Movements in funds

	At 1-Jan-2021	Incoming Resources	Resources Expended	Transfers	At 31-Dec-2021
	£	£	£	£	£
Unrestricted general funds	7,521	94,163	86,305	11,365	26,744
Designated funds					
Fire & Security systems	6,000			-6,000	
Restricted funds					
Bursary	5,639	3,971	1,880		7,730
Site Development		27,500	11,813	-5,365	10,322
Herald Building	159,868	139,780	1,462		298,186
Total restricted funds	165,507	171,251	15,155	-5,365	316,238
Total Funds	179,028	265,414	101,460		342,982

Bursary fund - The aim of the Chellington Bursary Fund is to make The Chellington Centre as accessible as possible, particularly for young people in areas of deprivation where funding is not easily available for residential activity. In 2021 four Bursaries were awarded to a value of £1,880 (2020; one award to a value of £150). One further award was approved in 2021 to a value of £300 for a group in July 2022.

Herald Building fund - This restricted funding was raised to build the Herald Building, incorporating showers and toilet facilities to be made available to campers, an administrative hub for the Chellington team and much needed storage space for equipment. Completion is expected during the first quarter of 2022.

Site Development fund - This restricted funding was raised to upgrade the facilities at The Centre, including new alarm systems, upgrades to air-sourced heat pumps and general site improvements for the benefit of users of The Centre and camping facilities. **Designated funds** previously set aside for the alarm systems were transferred into this fund. **Capitalised** equipment has been transferred to unrestricted funds when brought into use.

Acknowledgements

“They are constantly amazed by what they find here!”

Luton School

“We created an orienteering course around the village. The children worked as a team and had lots of outdoor experiences. With a night away they learnt how to look after themselves and all of the children came back, growing in confidence and becoming more rounded children. I believe that the children gained more from this venue than they can from any of the other residential providers.”

Jonathan Parker, Assistant Head Teacher of St Matthews Primary School, Luton

“Fantastic facilities for our Christmas weekend. Thank you for spotless venue”
Biggleswade Phoenix Explorer

“Incredibly Peaceful location, beautiful lake views, great showers, brilliant for small groups. thank you.”
St Millitus College, London

We are extremely grateful to the following donors for their generous support:

Edith Winifred Hall Trust
The Leathersellers Company
The Carlton Education Trust
The Gale Family Trust
Beatrice Laing Trust
Garfield Weston CT
The Bedfordshire Charitable Trust
The Wixamtree Trust
The Harpur Trust
Anson Trust
John Apthorp CT
The Hobson Charity
The Connolly Trust

And others who wish not to be named

“Thank you, we had a great time, so good to be together again”
Carers in Beds

“The time at Chellington allows children to forge new friendships, try new things, talk about things they wouldn't normally talk about at school. All these things help the children to develop their self-confidence and encourages them to experience different things. Many of our children do not leave Queens Park so experiencing being in the countryside is often a new concept!”
Head Teacher at Queen's Park Primary School, Bedford

“Chellington is uniquely able to create a magical reality, a space unto itself, the world as it should be. Having experienced it, when they return home the young people can remember what they built for themselves at Chellington, and what can be built in their own community too.”

Amelia Viney, CEO of Advocacy Academy

THE CHELLINGTON CENTRE

England & Wales - Charity number 1156511

Accounts

Company registration number (England and Wales): 08794342

Charity registration number (England and Wales): 1156511



(Incorporated as a Company Limited by Guarantee
and not having a Share Capital)

**FINANCIAL STATEMENTS AND ANNUAL REPORT
FOR THE YEAR ENDED 31 DECEMBER 2020**

Contents

Reference and Administrative Details of The Charity, Its Trustees and Advisers.....	1
Strategic Report	2
Introduction.....	2
Review of 2020	2
2020 Survival Strategy	3
Key priorities for 2021	6
Treasurer’s Report	9
Going Concern: Trading (unrestricted) account	9
Capital (restricted) accounts	9
Balance Sheet	10
2021 Financial Outlook.....	10
Governance Report.....	11
Independent Examiner’s Report to The Members of The Chellington Centre	13
Income and Expenditure Account.....	14
Balance Sheet.....	15
Notes to the Financial Statements.....	16
1. Accounting policies.....	16
2. Incoming resources from charitable activities.....	18
3. Charitable activities (including Governance costs).....	18
4. Governance costs	19
5. Trustees remuneration	19
6. Staff remuneration and numbers	19
7. Tangible fixed assets.....	20
8. Creditors: amounts falling due within one year	20
9. Analysis of net assets between funds.....	21
10. Movements in funds.....	21

Reference and Administrative Details of The Charity, Its Trustees and Advisers

Company number	08794342 (England and Wales)
Charity number	1156511 (England and Wales)
Board of trustees (Directors) (shown in order at Companies House)	CATCHPOLE, Claire (Interim Chair) GILBERT, Sally Elizabeth HAZELL, Martin Graeme (Treasurer) LESITER, Rachel Mary MILROY, David Paterson (retired 14 December 2020) SWIDENBANK, Gareth Owen (resigned 2 December 2020) TUSTING, James Charles TUSTING, John Robert
Independent examiner	Gavin Williams Premier FD Limited 87, The Parklands, Dunstable LU5 4GW
Bankers	Barclays Bank Plc 8 Market Street Wellingborough Northamptonshire NN8 1AP Cambridge & Counties Bank Charnwood Court New Walk Leicester LE1 6TE
Registered address	The Chellington Centre Felmersham Road Carlton Bedford MK43 7NA
Website	http://www.chellington.org

Strategic Report

Introduction

The Chellington Centre is an award winning, eco-friendly youth residential retreat, providing a base for exclusive-use learning, recreation and self-development in a rural environment. It is a place of expedition, contemplation, inspiration and invigoration, particularly but not exclusively for young people, providing many opportunities to build self-confidence and to reflect and celebrate life in a beautiful, rural setting. A place of transformation.

In recent years, the Centre has enjoyed significant growth in occupancy levels, welcoming over 5,000 overnight or day visitors to the Centre each year.

In January 2020, 54 teachers from St Matthews Primary School, Luton came to Chellington for a “mini experience”, led by the Deputy Head to give staff a first-hand experience of the get-away. They subsequently booked for a whole year group (approx. 120 children) to return in June with 4 back-to-back overnight stays, Mon-Fri.

“When I visited Chellington for the first time I was awed by the location and views. Our children live in a deprived area of Luton; they don’t see nature, and few have gardens. I wanted them to see the vastness of the countryside and to know there is so much more available to them than is found in their current world. At Chellington they can climb trees, walk across a field of cows and horses, sit round a campfire. It sparks their imagination and widens their horizons.”

Deputy Head, St Matthews Primary School, Luton

Review of 2020

2020 started with all the promise of an exceptional year. Bookings income exceeded budget by over 1k for January and February as we welcomed 14 different groups to the centre including 4 schools, 6 youth groups, a yoga retreat and 3 family bookings. By the beginning of March, over 80k was confirmed in actual and forward bookings for 2020.

Then the Covid-19 pandemic struck, with devastating impact.

In the first wave, as Government restrictions were imposed, we were forced to close our doors and furlough our staff. We had no choice but to swiftly abandon our 2020 strategy and devise a short-term plan for survival.

Our survival strategy involved:

1. Closely monitoring the Government restrictions and guidelines
2. Keeping in regular contact with customers booked to use the Centre
3. Rapidly introducing new Covid-19 safety procedures & guidelines
4. Introducing Airbnb as a marketing tool to attract last minute permissible bookings
5. Revising our terms and conditions to enable more flexibility in booking payment schedule
6. Relocating staff from our temporary Emmaus office
7. Reducing running costs at the Centre
8. Supporting staff, particularly our apprentice, through this challenging period
9. Appealing for financial assistance to help keep us afloat
10. Continuing our capital fund raising appeal
11. Progressing the Herald Building project
12. Piloting a “Pop-up Café” outside the Centre for locals to enjoy



England LGA Strategic Migration Partnership, Feb 2020
2-day forum/workshop sharing best practice

2020 Survival Strategy

1. Closely monitoring the Government restrictions and guidelines

The ever-changing Government restrictions on group numbers made it impossible for the Centre to trade normally. Constantly tracking the latest developments to identify any use of the Centre that we could facilitate safely, our Covid-19 policy statement was updated continuously in line with the changes.

2. Keeping in regular contact with customers booked to use the Centre

Although the vast majority of bookings in 2020 had to be cancelled due to the pandemic, almost without exception, we managed to port bookings to new dates in 2020 (only to be cancelled again), 2021 and 2022. Wherever possible, payments were transferred to the new dates through a voucher system. This high conversion rate is a clear reflection both of the reputation of the Centre and the excellent relationship between staff and customers.

3. Rapidly introducing new Covid-19 safety procedures & guidelines



Covid-19 risk assessments, new welcome and exit processes, additional hygiene provisions and intensive cleaning schedules all had to be created along with strict protocols for staff and volunteers to follow.

Although incurring some additional cost and no extra income, this was critical to ensure the safety of groups permitted to use the Centre as well as all those involved at the Centre.

4. Introducing Airbnb as a marketing tool to attract last minute, permissible bookings

In recognition that most of our pre-existing bookings would be impossible to deliver, we explored the idea of using Airbnb to plug the gaps with short-notice family/household bookings.

Although many of the Airbnb bookings were subsequently cancelled at the last minute due to further tightening of Government restrictions, it proved an effective method of tapping into low-cost, low-risk, low-effort short-term bookings. Undoubtedly, a promising marketing vehicle for the future



JULY 2020

"A group of us used The Chellington centre in July 2020 as restrictions (Covid-19) were eased. I can honestly say the Chellington Centre was the perfect place to use, post lockdown. Spacious, airy and very clean, even an automatic hand sanitiser pump as you went in! A lot of open, outdoor space to use, with the most gorgeous views of the Bedfordshire country-side. Highly recommended, we will be back. Thank you for the safe and satisfying use of your centre"

SEPTEMBER 2020

"12 of us visited from Norfolk for a staycation with friends. The BBQ and fire pit were really great for the evenings. We really appreciated having so much space. A few of us had to work whilst away and the room separate from the main part of the building was great for this. The surrounding area is beautiful for walks and visiting the neighbouring villages. Would thoroughly recommend."

OCTOBER 2020

"This space was great for our gathering. We found it to be so peaceful and still, with magical country side views. The old church has been converted masterfully and it was really nice to hangout in the common areas with a hot floor under foot. Highly recommend. Hoping we'll be back!"

5. Revising our terms and conditions to enable more flexibility in booking payment schedule

As uncertainty prevailed, we shortened the final balance payment window from 8 to 3 weeks, enabling groups to hold off on making outstanding payments until the Government position on imminent residential became clear.

6. Relocating staff from our temporary Emmaus office

As the Emmaus office space is not large enough to accommodate socially distanced working, the staff set up a temporary office base in the Ibbett Room to be used whenever the Centre was closed to groups. This provided some opportunity for staff to work together as well as operating separately from their homes.

7. Reducing running costs at the Centre

As soon as the pandemic struck, costs for 2020 were carefully reduced. Throughout the rest of the year, we strove to achieve the balance between retaining the flexibility to reopen to permissible groups (which we did several times) and keeping our overhead costs as low as possible.

Towards the end of the year, our Centre Manager, Scott Holden, achieved significant adjustments to our utilities (electric, water and telecoms), negotiating suspensions or reductions in contract services (including waste, insurance and marketing). Issues with the air-source pump heating, both at the front and back end of the year that involved running repairs and substantial replacement parts incurred an unexpected £4,969 in extra costs. A further £857 was spent on servicing the underfloor heating with unrelated flow issues. Such costs are not expected to reoccur in such concentration and are being carefully monitored in a 5-year analysis report.

Almost all scheduled spending on repairs, non-essential maintenance and capital improvements has been deferred to 2021 and beyond.

8. Supporting staff, particularly our apprentice through this challenging period

Prior to the change in the furloughing scheme allowing staff to work part-time hours, essential day-to-day functions of the Charity were fulfilled by trustees.

Despite wide-ranging challenges, the staff continue to be open to new responses, innovative in their delivery and loyal to the Centre and all who can make use of it. In particular, the commitment of both trustees and staff to support the apprenticeship through 2020 and successfully ensure its continuation given the circumstances of the year was a great achievement. In the first lockdown, when the apprentice was 100% furloughed, Bedford College provided online learning whilst our Business Development Manager arranged weekly zoom or phone call contact. There were many challenges including the impact of the lockdown on the well-being and mental health of the apprentice and the knock-on effect on motivation. At the point that the Business Development Manager was also furloughed, a more supportive role from Bedford College was initiated with the support of Trustee, Claire Catchpole, liaising with both Bedford College and the apprentice.

Once restrictions eased enough to allow the reintroduction of the apprentice, we did so - initially 1 day a week at Chellington and subsequently working from home 1 day a week – with a very positive result.

9. Appealing for financial assistance to help keep us afloat

We are very grateful for the generous and relentless financial support of The Carlton Education Trust as well as Bedford Borough Council, the Government furloughing scheme and private benefactors (see Treasurer's report for further details).

10. Continuing our capital fund raising appeal

Thanks to the generosity of a range of donors, we will shortly achieve our fundraising target for the Herald Building project.

11. Progressing the Herald Building project

On reaching our fundraising target, invitations to tender for the construction of the Herald Building were issued in December to qualified contractors. These will be evaluated in February with a commitment to a March 2021 start date.

12. Piloting a "Pop-up Café" outside the Centre for locals to enjoy

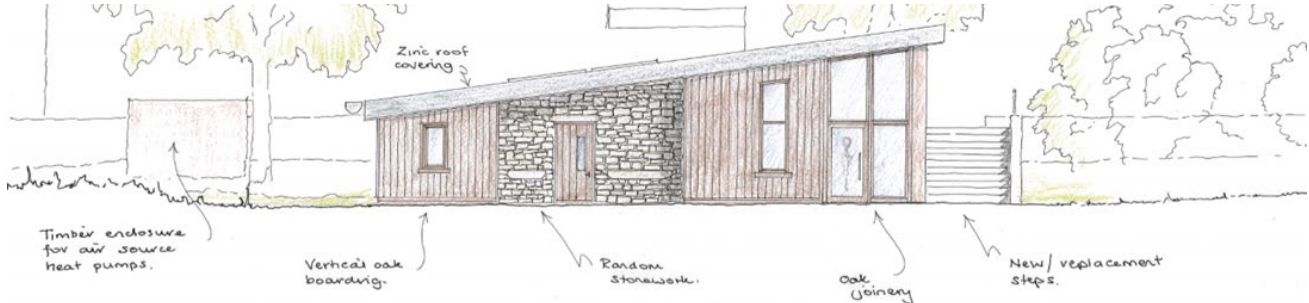
As part of our commitment to engage with the local community, we tested the idea of a pop-up outdoor café one Saturday in October. We were delighted with the response from the locals who visited and hope to repeat this and other initiatives as and when restrictions allow.



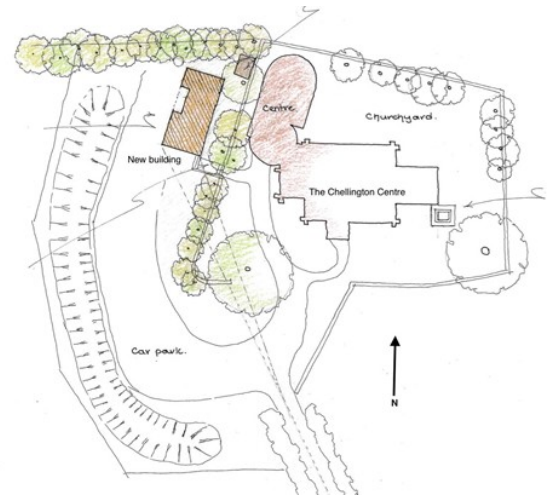
Key priorities for 2021

2021 is an exciting year for the Chellington Centre as we realise our dream to expand both the scale and flexibility of the experience we offer. Although the uncertainty and repercussions caused by the pandemic will undoubtedly continue to impact how we can operate, trustees and staff alike remain passionately committed to our objectives.

1. Complete the new Herald building project



Our vision for the future of the Chellington Centre has become even more relevant with the long-term implications of the pandemic. The addition of a new building adjacent to the Centre will enable us to increase the overall capacity of occupancy to 60 through the addition of a camping option and washroom facilities to support those camping. It will provide a permanent place for paid and voluntary team members to work from when the centre is in use, increase the sustainability of the Centre and maximize the input from all concerned in providing the highest quality experience for young people at the Centre.



Peter Joseph HERALD
1927 - 2020

Inevitably, this will also make it easier to encourage more local volunteering initiatives in the future.

The building work will go ahead subject to materials being available and social distancing measures on the site. The estimated weather dependent time to complete the works is eight to ten weeks. When the Centre can reopen, the plan is that the work be completed with minimum disruption to the activities and groups using the Centre during the construction period.

Once completed, the Centre will be able to offer groups a range of socially distanced options in the short-to-medium term, and we look forward to operating at the new expanded capacity when allowed.

The new building will be known as **"The Herald Building"** in memory of Peter Herald, a long-standing trustee and volunteer of The Chellington Centre.



2. Adapt the Centre to accommodate permissible bookings

The ongoing restrictions because of the pandemic mean that it is likely to be some time before the Centre can welcome groups in a "normal" way. In the meantime, we will continue to monitor changes to Government restrictions and open the Centre to families, groups, businesses or charities whenever possible. We will also continue to explore ideas for adapting the Centre to accommodate any use of the Centre that might become possible.

3. Raise awareness and funds for the Chellington Bursary Fund

This crucial aspect of the Charity's work becomes even more important in the aftermath of the pandemic. We are urgently seeking funds to build up the Chellington Centre Bursary Fund in order to offer financial support to organisations that can deliver life changing experiences at Chellington for disadvantaged young people.

"Many of our children come from hugely disadvantaged homes and going away overnight is something they can only dream of! The bursary makes this an affordable trip; it makes this trip possible!

The impact of the trip is not just with the children but also with the adults. It is lovely to have the time and opportunity to listen to the children talk about all sorts of things. The Chellington trip provides a platform upon which the staff and children learn new things about themselves and each other. All of our children come back with smiles on their faces saying that they have had the best time ever!"



Head Teacher at Queen's Park Primary School, Bedford

The distinctive feature that all groups enjoy exclusive use, regardless of their numbers is something not available at larger centres. This in itself offers to the value of the experience, particularly for young people with learning or behavioural difficulties. We describe it as a 'low key' Centre, we place few rules on groups and have seen how this helps them 'own' the place during their stay.



It is an ideal place for special needs groups with its quiet situation yet easy access. Most groups come for some kind of team building; beginning of a new school year, new start/first time away; challenge for young people, offering a different environment than they are used to; time out, particularly for young people with challenges, a quieter place to refocus, have space, renew; transition time for primary school children moving to high school; Confidence building is important and the majority of users report an increase in the confidence of young people.

Raising donations for this Bursary fund remains a strategic priority for the trustees, both to attract new, relevant youth organisations and to continue to meet our Charitable Objects, ensuring the Centre remains accessible to all, regardless of means.

4. Continue building youth occupancy

Youth groups, charities and schools are on standby to re-engage with their planned experiences at the Chellington Centre as soon as it becomes safe and realistic to do so. Our youth sector marketing activity, targeting these 3 core group types, is lined up ready for delivery once the roadmap out of the current restrictions becomes clear.

5. Achieve operational sustainability

The Trustees are focused on seeing the Centre develop to a position where it is self-sustaining. The construction of the new building is key to this movement to increase income.

In the short to medium term, as soon as Covid-19 restrictions start easing, we will look to fill available gaps in the Centre diary with Airbnb *family & small group* bookings as well as pursuing other effective routes to market.



When possible, we will also seek to maximise revenue from high yielding bookings such as weddings, large family get-togethers and other commercial enterprises. This not only brings in revenue for the Centre but also helps to engage and educate the community on what the Centre does and how they can support it.

6. Focus resources to achieve objectives

Our Business Development Manager commences Maternity Leave in March, leaving a significant gap in our resources. A part-time summer assistant will be recruited on a six-month contract to help support mid-week activity at the Centre and provide some level of resilience.

7. Ongoing support for apprenticeship

We are on track to complete the Apprenticeship as planned by August 2021. At the start of the apprenticeship, we organised monthly 1-2-1 meetings with Trustee, Claire Catchpole and the apprentice. This established relationship then proved extremely helpful when further support needed. It is a model that if we were to have another apprentice would be important to have in place.

8. Engagement in the local community

The "Pop-up" café and other such initiatives will ensure we continue to develop relationships with the local community.

Approved and authorised for issue by the Board of Trustees on 12th March 2021 and signed on their behalf by:



R Lesiter - Director

Treasurer's Report

Going Concern: Trading (unrestricted) account

The present Covid-19 pandemic has had a significant negative impact in 2020 with an Operating Loss of £73,814 on Bookings Income of £24,270. This loss has been covered by Grants and Donations totalling £67,571 and a reduction in unrestricted reserves of £6,243.

Grants and Donations to cover our operating costs during periods of reduced activity and mandated shutdowns:

- Two grants of £10,000 each were received from The Carlton Educational Trust to cover our operating costs,
- Grants totalling £12,001 were received from Bedford Borough Council under Government Support Schemes to cover costs during shutdowns,
- Government Support for furloughed staff totalling £27,400 was received from HMRC enabling us to furlough staff and maintain their employment through the pandemic,
- An Apprentice Wage Subsidy Grant of £1,000 was received from Bedford College to support our Apprenticeship programme
- Further private donations (including Gift Aid and bank interest) totalling £7,170 were received from local benefactors wishing to support the sustainability of The Centre through the present crisis.

We continue to seek out additional sources of grants that will help maintain The Centre as a Going Concern until the Economy starts to reopen.

Forward Bookings

As of 31st December 2020, we have confirmed bookings for later in 2021 to the value of £51,960, against which we hold deposits of £18,551. In addition, we are holding deposits to the value of £4,914 against deferred 2020 bookings with original booked revenue values totalling £15,205 that have not yet been re-booked.

(2019: Deposits held of £21,530 against bookings for 2020 to the value of £60,693)

Operating Expenses

We continue to manage our operating costs to minimise our cost base wherever possible and continue to use part time furlough arrangements to keep staff members engaged with The Centre and to support customer bookings for later in 2021.

Free Cash

At the end of 2020, our available unrestricted cash reserves amount to £5,367 (2019: £12,826). Whilst this sum is significantly below our reserves policy, we are able to maintain the business as a going concern for the foreseeable future.

Capital (restricted) accounts

Herald Building Fund

Following the granting of planning permission for the Herald Building in June 2019 we have continued active fundraising to enable us to complete this project and have so far secured additional funds of £47,530 (2019: £20,000) plus commitments for a further £105,000, bringing the total grants and donations raised to £271,913.

Achievement of this target has enabled us to formally commence the project with Invitations to Tender for the build being issued in December. £14,040 of costs necessary to bring us to the issue of the Invitations to Tender have accordingly been capitalised. This will be held as Construction in Progress (CIP) in the restricted balance sheet until the building is brought into use when it will be transferred to the unrestricted balance sheet and depreciated over the expected useful life of the building.

Bursary Fund

During the year we received donations, of £3,032 (2019: £1,976) to the Bursary Fund, but due to Covid-19 restrictions we only had one booking that qualified for a £150 Bursary. Five further awards were approved in 2020 to a value of £2,042, these have been deferred until 2021 when the groups have rebooked to stay at The Centre.

Balance Sheet

Retained Funds

Our total Equity is £179,028 (2019: £134,982) as follows:

- Community Funds: £7,521 (2019: £15,764),
- Designated Fund (Fire & Security Systems) £6,000 (2019: £4,000),
- Bursary Fund £5,639 (2019: £2,758),
- Herald Building Fund £159,868 (2019: £112,460).

2021 Financial Outlook

Post balance sheet we have obtained an additional unrestricted grant of £10,000 plus Local Authority funding of £6,001 which together with furlough funding from HMRC until the end of April will help us remain as a going concern.

In the light of the ongoing pandemic, we have examined several scenarios for 2021 and have set an austerity budget that is based on the most likely outcome for re-opening the Centre and will monitor this closely.

Approved and authorised for issue by the Board of Trustees on 12th March 2021 and signed on their behalf by:



M Hazell, ACMA CGMA, FRSA, MIoD, MBA, MA (Cantab) - Treasurer

Governance Report

Structure

The Chellington Centre charity was set up with the singular purpose of supporting and developing the work at the Chellington Centre.

The Charity was established as a registered charity on 2 April 2014 as the Chellington Centre, having been set up and incorporated as a company on 28 November 2013.

The governing document is the Memorandum and Articles of Association dated 21 November 2013, which were adopted by special resolution on the 13 March 2014.

In accordance with the Articles of Association, at least half the number of appointed directors reside within a 15-mile radius of the Chellington Centre.

Retiring Trustees

During 2020 two long standing trustees, David Milroy and Gareth Swidenbank retired. Both had been Trustees since the establishment of The Charity and had, in turn, served as Chair of the Board of Trustees. Their insights, experience and dedication will be sorely missed. Gareth Swidenbank continues to support our fund-raising efforts, building on the network of contacts established over the last few years.

Mission and Charity's Objects



Our mission is to provide an inspirational and rural setting for young people to develop their personal potential

The Provision, maintenance, organisation and management of The Chellington Centre to:

- 1) Advance education, particularly of the young,
- 2) Develop the physical, mental and spiritual capacities of those in need by reason of youth, age, ill health, disability, financial hardship or another disadvantage.

Bursary fund

In furtherance of the Objects but not for any other purpose the Charity has established a bursary fund from which to provide bursaries to make the facilities of the Charity as accessible as possible to as wide a range of groups as possible.

Charity Governance Code for smaller charities

The Charity's Trustees have adopted the Charity Governance Code for smaller charities:

- 1. Organisational purpose** - The board is clear about the charity's aims and ensure that these are being delivered effectively and sustainably.
- 2. Leadership** - The board provides strategic leadership in line with the charity's aims and values. Full trustee meetings are held quarterly to review financial results, policies and procedures and any issues of governance. In addition, the board holds a monthly strategic review to monitor progress on strategic actions and to ensure appropriate action is taken. A separate buildings committee, under the chairmanship of a Trustee, meets as required to review progress and actions regarding the New Building project, and the maintenance and physical security of the Chellington Centre buildings.
- 3. Integrity** - The board acts with integrity, adopting values and creating a culture which help achieve the organisation's charitable purposes. The board is aware of the importance of the public's confidence and trust in charities, and trustees undertake their duties accordingly.
- 4. Decision-making, risk and control** - The board makes sure that its decision-making processes are informed, rigorous and timely and that effective delegation, control and risk assessment and management systems are set up and monitored.

The Trustees have assessed the risks that the charity faces. The major financial risk is a reduction in occupation of the Centre. This risk is controlled by close monitoring of advance bookings and adjustment of budgeted spend for flexible costs, when required.

The Trustees have determined that it is appropriate that unrestricted cash reserves should be maintained to cover approximately three months of fixed operating expenditure.

5. Board effectiveness - The board works as an effective team, using the appropriate balance of skills, experience, backgrounds and knowledge to make informed decisions.

6. Diversity - The board's approach to diversity supports its effectiveness, leadership and decision-making.

7. Openness and accountability - The board leads the organisation in being transparent and accountable.

Trustees' responsibilities to prepare financial statements

Charity law requires the Trustees to prepare financial statements for each financial year which give a true and fair view of the affairs of the charity and of the deficit or surplus of the charity for that YEAR. In preparing those financial statements, the Trustees are required to:

- select suitable accounting policies and then apply them consistently,
- observe the methods and principles in the Charities SORP,
- make judgements and estimates that are reasonable and prudent,
- state whether applicable accounting standards have been followed, subject to any material departures disclosed and explained in the financial statements, and
- prepare the financial statements on the ongoing concern basis unless it is inappropriate to presume that the charity will continue in business.

The Trustees are responsible for keeping proper accounting records which disclose with reasonable accuracy at any time the financial position of the charity and to enable them to ensure that the financial statements comply with the Charities Act 2011. They are also responsible for safeguarding the assets of the charity and hence for taking reasonable steps for the prevention and detection of fraud and other irregularities.

Independent Examiner

A proposal to reappoint Gavin Williams of Premier FD Limited as the Independent Examiner will be proposed at our forthcoming AGM and they have expressed a willingness to accept.

Approval

Approved and authorised for issue by the Board of Trustees on 12th March 2021 and signed on their behalf by:



C. Catchpole – Interim Chair

Independent Examiner's Report to The Members of The Chellington Centre

I report to the charity trustees on my examination of the accounts of the company for the year ended 31 December 2020 as set out on pages 14 to 21.

9. Responsibilities and basis of report

As the charity's trustees of the company (and its directors for the purposes of company law) you are responsible for the preparation of the accounts in accordance with the requirements of the Companies Act 2006 ('the 2006 Act').

Having satisfied myself that the accounts of the company are not required to be audited under Part 16 of the 2006 Act and are eligible for independent examination, I report in respect of my examination of your charity's accounts as carried out under section 145 of the Charities Act 2011 (the '2011 Act'). In carrying out my examination I have followed the Directions given by the Charity Commission under section 145(5)(b) of the 2011 Act.

10. Independent examiner's report

I confirm that I am qualified to undertake the examination because I am a member of the Institute of Chartered Accountants in England and Wales, which is one of the bodies listed in section 145 of the 2011 Act.

I have completed my examination. I confirm that no matters have come to my attention in connection with the examination giving me cause to believe:

1. accounting records were not kept in respect of the company as required by section 386 of the 2006 Act, or
2. the accounts do not accord with those accounting records, or
3. the accounts do not comply with the accounting requirements of section 396 of the 2006 Act other than any requirement that the accounts give a 'true and fair' view which is not a matter considered as part of an independent examination, or
4. the accounts have not been prepared in accordance with the methods and principles of the Statement of Recommended practice for accounting and reporting by charities.

I have no concerns and have come across no other matters in connection with the examination to which attention should be drawn in this report in order to enable a proper understanding of the accounts to be reached.



Gavin Williams FCA DChA BSc
Premier FD Limited
87, The Parklands, Dunstable LU5 4GW
www.premier-fd.com

12th March 2021

Income and Expenditure Account

	Notes	Unrestricted /Designated £	Restricted £	2020 £	2019 £
Incoming resources from charitable activities:					
Voluntary income		27,170	50,561	77,731	39,306
Bookings income		24,270	-	24,270	90,920
Government funding		40,401		40,401	-
Total incoming resources	2	<u>91,841</u>	<u>50,561</u>	<u>142,402</u>	<u>130,226</u>
Resources expended					
Charitable activities		98,084	272	98,356	119,337
Total resources expended	3 & 4	<u>98,084</u>	<u>272</u>	<u>98,356</u>	<u>119,337</u>
Transfers		-	-	-	-
Net Movement in funds		-6,243	50,289	44,046	10,889
Reconciliation of funds					
Total funds brought forward		19,764	115,218	134,982	124,093
Total funds carried forward		<u>13,521</u>	<u>165,507</u>	<u>179,028</u>	<u>134,982</u>

All income and expenditures are derived from continuing activities.

All recognised gains and losses are included in the Statement of Financial Activities.

The notes on pages 19 to 24 form part of these financial statements

Balance Sheet

	Notes	2020		2019	
		£	£	£	£
Fixed assets					
Tangible fixed assets	7		1,136		1,920
Construction in Progress			14,040		-
Current assets					
Cash in hand and in bank		192,436		158,323	
Prepaid fire & security policy		1,018		1,018	
Accounts receivable		-		-	
		<u>193,454</u>		<u>159,341</u>	
Creditors: amounts falling due within one year	8	<u>-29,602</u>		<u>-26,279</u>	
Net current assets			<u>163,852</u>		<u>133,062</u>
Net assets			<u>179,028</u>		<u>134,982</u>
Funds					
Unrestricted fund			7,521		15,764
Designated fund			6,000		4,000
Restricted funds			<u>165,507</u>		<u>115,218</u>
Total funds			<u>179,028</u>		<u>134,982</u>

The notes on pages 16 to 21 form part of these financial statements.

For the financial year ended 31 December 2020 the charity was entitled to exemption from audit under section 477 Companies Act 2006. No member of the charity has deposited a notice, pursuant to section 476, requiring an audit of these financial statements under the requirements of the Companies Act 2006.

The directors acknowledge their responsibilities for ensuring that the charity keeps accounting records which comply with section 386 of the Act and for preparing financial statements which give a true and fair view of the state of affairs of the charity as at the end of the financial year and of its profit or loss for the financial year in accordance with the requirements of sections 394 and 395 and which otherwise comply with the requirements of the Companies Act 2006 relating to accounts, so far as applicable to the charity.

These financial statements have been prepared in accordance with the provisions applicable to companies subject to the small companies' regime within Part 15 of the Companies Act 2006.

Approved by the Board and authorised for issue on 12th March 2021:



C Catchpole – Interim Chair



M Hazell - Treasurer

Registered company number: 08794342 (England and Wales)

Notes to the Financial Statements

1. Accounting policies

1.1. Accounting convention

The financial statements are prepared in accordance with the Statement of Recommended Practice: Accounting and reporting by charities (SORP 2019 – FRS 102 version), applicable accounting standards and the Companies Act 2006. The charity has taken advantage of the Small Entity provisions of FRS 102. The financial statements are presented in Sterling (£).

Statement on going concern

After reviewing the charity's forecasts and projections, the directors have reasonable expectation that the charity has adequate resources to continue in operational existence for the foreseeable future. The charity therefore continues to adopt the going concern basis in preparing its financial statements.

1.2. Company status

The charity is a company limited by guarantee. The directors of the company are the trustees named on page 3. In the event of the charity being wound up, the liability in respect of the guarantee is limited to £1 per member of the charity.

1.3. Incoming resources

Incoming resources represents the total income receivable during the year comprising of donated income, income from events and bookings. All incoming resources are included in the Statement of Financial Activities when the charity is legally entitled to the income and the amount can be quantified with reasonable certainty.

1.4. Expenditure

All expenditure is included on an accruals basis and is inclusive of all VAT, which cannot be reclaimed, and is reported as part of the expenditure to which it relates:

- Charitable expenditure comprises those costs incurred by the charity in the delivery of its activities and services for its beneficiaries. It includes both costs that can be allocated directly to such activities and those costs of an indirect nature necessary to support them.
- Governance costs include those costs associated with meeting the constitutional and statutory requirements of the charity and include the Independent Examiner's fees and costs linked to the strategic management of the charity.
- All costs are allocated directly, as such there are no support costs to apportion.

1.5. Funds

General funds are unrestricted funds which are available for use at the discretion of the Trustees in furtherance of the general objects of the charity and which have not been designated for other purposes.

Designated funds are set aside by the Trustees for specific purposes. The aim and use of the designated funds are set out in the notes of the financial statements.

Restricted funds are funds, which are to be used in accordance with specific restrictions imposed by the donor. The aim and use of the restricted funds are set out in the notes of the financial statements.

1.6. Tangible fixed assets and depreciation

Capital expenditure on items costing £1,000 or higher are recorded as tangible fixed assets. Tangible fixed assets are stated at cost valuation less depreciation.

Depreciation is provided on a straight-line basis at rates calculated to write off the cost or valuation less estimated residual of each asset over its expected useful life. Kitchen equipment is depreciated over a three-year useful life; Media equipment is depreciated over a five-year useful life; Camping equipment and Games equipment valued at less than £5,000 is fully depreciated in the year of acquisition.

1.7. Herald Building income, expenses and fixed assets

Restricted grants received towards the Peter Herald Building Project are recorded as Income when received UNLESS:

- a. The grant includes a provision for repayment of monies advanced, if the project does not go ahead AND
- b. There is a realistic expectation that the project will not proceed.

Accordingly, all monies received to date have been recorded as Income in the Financial Statements.

Following the resolution to proceed with the project, expenses to date (including planning application fees, professional fees relating to obtaining planning permission and to technical design, and expenses for site preparation) have been capitalised as Restricted Construction in Progress in the Balance Sheet.

This Construction in Progress will be held on the Restricted Balance Sheet as a fixed asset until the building is brought into use when it will be transferred to the Unrestricted Balance Sheet and appropriate depreciation policy applied.

1.8. Pensions

The Charity operates a defined contribution plan for its employees. A defined contribution plan is a pension plan under which the Charity pays fixed contributions into a separate entity. Once the contributions have been paid the Charity has no further payment obligations.

The contributions are recognised as an expense in the Income and Expenditure Account when they fall due. Amounts not paid are shown in accruals as a liability in the Balance Sheet. The assets of the plan are held separately from the Company in independently administered funds.

1.9. Taxation

The Chellington Centre is a registered charity and is not liable to Corporation Tax.

2. Incoming resources from charitable activities

	Unrestricted /Designated 2020	Restricted 2020	Total 2020	Total 2019
	£	£	£	£
Incoming resources from charitable activities:				
Voluntary Income				
Donation – Carlton Education Trust	20,000	-	20,000	13,000
Donation – New Building	-	46,913	46,913	20,000
Donations - Bursary Fund	-	3,028	3,028	1,964
Donations - Camping equipment	-	-	-	3,063
Donations - General	6,875	-	6,875	-
Income from fund raising events	269	-	269	-
Government grants and furlough credit	40,401	-	40,401	-
Other income (bank interest)	26	620	646	1,279
	<u>67,571</u>	<u>50,561</u>	<u>118,132</u>	<u>39,306</u>
Bookings income				
Youth bookings	12,175	-	12,175	48,465
Non-youth bookings	12,095	-	12,095	45,455
	<u>24,270</u>	<u>-</u>	<u>24,270</u>	<u>90,920</u>
Total incoming resources	<u><u>91,841</u></u>	<u><u>50,561</u></u>	<u><u>142,402</u></u>	<u><u>130,226</u></u>

Donations include associated Gift Aid of £1,895, (2019, £313) received from HMRC during the year
 Income from fund raising events is shown net of any associated direct costs.

3. Charitable activities (including Governance costs)

	Unrestricted /Designated 2020	Restricted 2020	Total 2020	Total 2019
	£	£	£	£
Charitable activities				
Direct costs of bookings	1,487	-	1,487	6,361
Bursaries	-	150	150	4,537
Staff costs	67,708	-	67,708	64,071
Legal & professional fees	4,758	-	4,758	4,360
Advertising & marketing	1,053	-	1,053	3,724
Repairs & renewals	10,963	-	10,963	15,124
Rent, Rates and Utilities	8,939	-	8,939	9,680
Office & general costs	3,176	-	3,176	3,431
Herald building project	-	122	122	4,973
Camping equipment	-	-	-	3,076
Total cost of charitable activities	<u><u>98,084</u></u>	<u><u>272</u></u>	<u><u>98,356</u></u>	<u><u>119,337</u></u>

4. Governance costs

	2020 £	2019 £
Independent examiner's remuneration (included in Note 3)	900	900
Trustees' expenses	-	-
	<u>900</u>	<u>900</u>

5. Trustees remuneration

The trustees received no remuneration (2019: £nil) and received no reimbursements (2019: £nil).

6. Staff remuneration and numbers

Remuneration	2020 £	2019 £
Wages and salaries	64,191	61,142
Accrued holiday pay	1,012	-187
Social Security costs	1,202	1,931
Pension costs	1,259	1,151
Staff training	44	34
	<u>67,708</u>	<u>64,071</u>

The average number of full and part-time employees during the year were as follows:

	2020	2019
Full time – Centre Manager	1.0	1.0
Part time – Business Development Manager	0.7	0.7
Part time – Assistant Manager	0.4	0.4
Part time – Apprentice	0.4	0.1
	<u>2.5</u>	<u>2.2</u>

No employees received emoluments of more than £60,000 per annum.

Remuneration costs were offset by HMRC furlough credits of £27,400 (2019 – nil) and Apprentice rebate of £1,000 (2019 – nil))

7. Tangible fixed assets

	Camping Equipment £	Media Equipment £	Other Equipment £	Herald Building £	Total £
Cost or valuation					
At 1 January 2020	3,076	1,723	5,943	-	10,742
Acquisitions	-	-	-	14,040	14,040
At 31 December 2020	3,076	1,723	5,943	14,040	24,782
Depreciation					
At 1 January 2020	3,076	242	5,504	-	8,822
Charge for year	-	345	439	-	784
At 31 December 2020	3,076	587	5,943	-	9,606
Net book value					
At 31 December 2019	-	1,481	-	-	1,920
At 31 December 2020	-	1,136	-	14,040	15,176

8. Creditors: amounts falling due within one year

	2020 £	2019 £
Deferred booking income	23,465	21,530
Accruals	1,922	2,020
Rent payable	800	600
Accounts payable	1,155	77
Barclaycard	101	479
HMRC – PAYE	787	1,214
Holiday Pay	1,372	360
	29,602	26,279

Deferred income of £23,465 (2019 £21,530) relates to pre-payments for future bookings and includes £4,914 of deferred deposits not yet rebooked.

9. Analysis of net assets between funds

	Unrestricted Fund £	Designated Fund £	Restricted Funds £	Total Funds £
Tangible fixed assets	1,136	-	14,040	15,176
Current assets	35,987	6,000	151,467	193,454
Current liabilities	-29,602	-	-	-29,602
Net assets at 31 December 2020	7,521	6,000	165,507	179,028
Tangible fixed assets	1,920	-	-	1,920
Current assets	40,123	4,000	115,218	159,341
Current liabilities	-26,279	-	-	-26,279
Net assets at 31 December 2019	15,764	4,000	115,218	134,982

10. Movements in funds

	At 1 January 2020 £	Incoming Resources £	Resources Expended £	Transfers £	At 31 December 2020 £
Unrestricted general funds	15,764	91,841	98,084	-2,000	7,521
Designated funds					
Fire & Security systems	4,000	-	-	2,000	6,000
Restricted funds					
Bursary	2,758	3,031	150	-	5,639
Herald Building	112,460	47,530	122	-	159,868
	134,982	142,402	98,356	-	179,028

Bursary fund - The aim of the Chellington Bursary Fund is to make The Chellington Centre as accessible as possible, particularly for young people in areas of deprivation where funding is not easily available for residential activity. In 2020 one Bursary award was made to a value of £150 (2019 nine awards to a value of £5,529). Five further awards were approved in 2020 to a value of £2,042, these have been deferred until 2021 due to Covid-19 restrictions.

Herald building fund - This is restricted funding to build the new support centre, to incorporate showers and toilet facilities to be made available to campers. Planning permission was granted in 2019, and following success in fund raising, construction is planned to commence in March 2021.

Designated fund - The directors have resolved to set aside £2,000 per year towards the future cost of replacing the present, ageing, fire and security monitoring system.