

PNEUMA CHURCH
(A COMPANY LIMITED BY GUARANTEE)

**TRUSTEES REPORT AND
UNAUDITED FINANCIAL STATEMENTS
FOR THE YEAR ENDED
31ST MARCH 2024**

CHARITY REGISTRATION No: 1156319

COMPANY REGISTRATION No: 08824457

PNEUMA CHURCH
(A COMPANY LIMITED BY GUARANTEE)

CONTENTS

Page 2	Reference and administrative details of the charity, its trustees and advisors
Pages 3 to 5	Trustees' report
Page 6	Independent examiner's report
Page 7	Statement of financial activities
Page 8	Balance sheet
Pages 9 to 20	Notes to the financial statements
Pages 21 to 22	Statement of Cashflows

**PNEUMA CHURCH
(A COMPANY LIMITED BY GUARANTEE)**

**TRUSTEES REPORT
FOR THE YEAR ENDED 31 MARCH 2024**

REFERENCE AND ADMINISTRATIVE INFORMATION

CHARITY NAME	Pneuma Church (formerly Ashford Vineyard Church)	
CHARITY NUMBER	1156319	
COMPANY REGISTRATION NUMBER	8824457	
START OF FINANCIAL YEAR	1st April 2023	
END OF FINANCIAL YEAR	31st March 2024	
TRUSTEES THAT SERVED DURING THE YEAR TO 31 MARCH 2024	Mr C M Kimmance Mrs R Tomsett (nee Jenkins) Mr I Witts (resigned 14 December 2023) Mrs E Davies Mr R M L Eason Mr J K Henderson (resigned 25 March 2024) Mrs L Mitchell	
COMPANY SECRETARY	Mr R M L Eason	
REGISTERED ADDRESS	Units 1 & 9 Ashford Works Cobbswood Industrial Estate Brunswick Road Ashford Kent TN23 1EH	
DATE OF INCORPORATION	23rd December 2013, as amended 13 April 2022	
GOVERNING DOCUMENT	Memorandum and Articles of Association	
BANKERS	Metro Bank One Southampton Row London WC1B 5HA	CAF Bank Limited 25 Kings Hill Avenue Kings Hill ME19 4JQ
INDEPENDENT EXAMINERS	Independent Examiners Limited Unit 2 The Broadbridge Business Centre Delling Lane Bosham PO18 8NF	

**PNEUMA CHURCH
(A COMPANY LIMITED BY GUARANTEE)**

**TRUSTEES REPORT
FOR THE YEAR ENDED 31 MARCH 2024**

The trustees present their report and financial statements for the year ended 31 March 2024.

The financial statements have been prepared in accordance with Accounting and Reporting by Charities: Statement of Recommended Practice applicable to charities preparing their accounts in accordance with the Financial Reporting Standard applicable in the UK and Republic of Ireland (FRS 102) (effective 1 January 2019) - (Charities SORP (FRS 102)) and the Companies Act 2006.

Who we are

Pneuma Church is a family on a mission who create spaces for people to encounter God, be equipped to bring life to the city and experience the outworking of this in their day-to-day.

What we're like

'The environment we curate to nurture the things we wish to see'

We have 11 main headings of our culture and underneath sit other statements that help shape who we are. The 11 main culture statements are below:

1. God is good
2. We live in God's presence
3. God is always working
4. God has a plan for our lives
5. God has placed us to bring life where we are
6. Pneuma Church is family
7. We look to love people well
8. All are invited!
9. God's word is powerful in changing lives
10. We celebrate risk as we pursue the 'impossible'
11. Faith is relationship, not religious ritual

Objectives and Activities

Our culture is designed to practically reflect our objectives and guide planning for our activities. The trustees have given due consideration to general guidance published by the Charity Commission relating to public benefit and in particular to its supplementary public benefit guidance and worked with our leadership team to deliver our objectives.

The Charity's objectives (the Objects) are for the public benefit and are restricted to the following:

- (a) to advance the Christian faith in accordance with the statement of beliefs in the schedule to the articles hereto attached including but not by way of limitation through the planting of other Pneuma churches in such ways and in such parts of Ashford, the United Kingdom or the world as the trustees from time to time may think fit;
- (b) to further Christian education in such parts of Ashford, the United Kingdom and the world as the trustees may from time to time think fit;
- (c) to relieve sickness and financial hardship and to promote and preserve good health by the provision of funds, goods or services of any kind, including through the provision of counselling, training in life skills and support in such parts of Ashford, the United Kingdom or the world as the trustees from time to time may think fit;
- (d) to provide or assist in the provision of facilities in the interests of social welfare for recreation or other leisure time occupation of individuals who have need of such facilities by reason of their youth, age, infirmity or disability, financial hardship or social circumstances with the object of improving their conditions of life.

'Bringing life to the city'

We have interpreted and simplified these Objects as the differences and changes we aim to achieve for people and communities as follows:

Increasing people's connection to God as Father:

- Increasing opportunities for people to encounter God
- Encouraging decisions of yes to Jesus
- Helping people grow in their relationship with God

Improving health and well-being:

- Reducing symptoms of illness
- Creating spaces where people feel they belong and can contribute

Reducing the impact of poverty:

- Equipping people to break the cycles of poverty
- Providing everyday essentials

Developing leaders:

- Be continually raising leaders within Pneuma Church to strengthen the church and the town
- Offering encouragement, support and training to leaders town-wide

**PNEUMA CHURCH
(A COMPANY LIMITED BY GUARANTEE)**

**TRUSTEES REPORT
FOR THE YEAR ENDED 31 MARCH 2024**

Improving aspirations and opportunities for children & young people:

- Building confidence and self-esteem in children and young people
- Equipping young people with life-skills

Strengthening families:

- Helping marriages thrive
- Strengthening family relationships

Our strategy:

Our overall strategy for achieving our aims and objectives is summarised as:

Encounter – that people would be 'seen', valued and loved as individuals, motivated by our relationship with God, as modelled by Jesus – and thus encounter God for themselves.

Equip – that by receiving this offer of love, in both practical and relational forms, they will be equipped to tackle life and achieve their full potential, for themselves and others.

Experience – that each would have an ongoing experience of fullness of life and help others have a similar experience.

We achieve this by setting up programmes that address people's needs, primarily by creating mutually supportive communities – to work WITH people and NOT to do TO people. Needs can include material needs, food, clothing and household items, advice and signposting, training and support groups.

We measure the impact through gathering general statistics on quantity of services and items provided, actual changes in people's life circumstances (e.g. out of debt, got a job, new housing, reduced or stopped substance misuse, healed etc.) – this is backed up with actual stories of the impact our work has had on people's lives.

Activities and programmes

Our activities and programs are driven by our strategy based on our vision and objectives as follows:

Pneuma Sundays

Pneuma Sundays are an important part of the life of Pneuma Church, where we gather as a family to encounter God and connect with each other.

KIDS & YOUTH

We are passionate about raising up and equipping our children and young people to walk in their true identity as carriers of God's love.

- **KIDS** is a place where kids are welcome to come as they are and explore all about Jesus and what He has to offer them.
We believe that kids have full access to the Holy Spirit, and we are expectant that He will show up on a Sunday morning, and whenever we gather together!
At Pneuma Kids we play, explore the bible, and worship Jesus as He is present throughout our time together!
- **YOUTH** gathers as a community of young people who are growing together in connection with Jesus, and having fun along the way!
Everyone is invited to come as they are at Pneuma Youth! We are passionate about creating spaces to encounter Jesus, know Father God and experience the Holy Spirit. We do that through worship, prayer, discovering the Bible and tackling 'hot topics' together.
We believe that our youth are the 'now' generation and we want to help them step out into this world knowing who God is and who they are, equipped with a toolkit that will enable them to live out God's plans for their lives.

FEAST - "Family around a table"

The heart of Feast is family around a table in a home sharing food together. This brings people together to contribute and share across the generations, modelling good family relational dynamics.

GROUPS

- **DISCIPLESHIP GROUPS**

Reflect:Grow:Pray

These are groups made up of 3-6 people, meeting for around 1 hour once a week, designed to do a few things:

1. Inspire each person in their own discipleship to Jesus.
2. Create intentional community, building relationships to know and be known by others over time, encouraging each other on.
3. Grow in the knowledge and love of God, through reading and reflecting on the Bible.

**PNEUMA CHURCH
(A COMPANY LIMITED BY GUARANTEE)**

**TRUSTEES REPORT
FOR THE YEAR ENDED 31 MARCH 2024**

- **Small Groups**

A space to know, be known and be inspired to deeper intimacy with Jesus.

These are led, slightly larger groups meeting regularly with a focus on deepening relationship with Jesus. A place to be known, delve into the Bible and find community.

COMPASSION

Working with the local community to support and empower people. Everyone is welcome to access our services. This sometimes starts with a bit of practical help such as hot meals, free school uniform, or financial guidance and support.

- **Storehouse** offers clothes and equipment for children and babies

These items are free of charge to anyone who needs them. We also have school uniform, toiletries, and small household supplies (such as kitchen necessities, bedside tables, and sometimes beds themselves).

- **Compassion Café** runs from 10am – 12pm on the last Saturday of each month for friendship and an opportunity to access our Compassion projects.

- **Support Worker**

We have a fantastic support worker whose job is to support families we meet in whatever way we can!

This could include helping them to access other Pneuma Church projects, accompanying people to appointments, signposting to other services across Ashford or simply having coffee and checking in with people.

- **RENEW** is a membership programme aimed at empowering people to achieve a renewed vision for food, finance, and lasting stability. Membership brings access to food and other provisions for their family at a vastly reduced cost. All whilst accessing one to one, personalised support to reach goals set by members themselves.

Once goals are set, we ensure that someone walks alongside each family cheering them on and encouraging them as they step into a renewed vision for their lives.

- **Emergency Food**

Family Food Bank boxes available for those who are in need of emergency food.

No one should go hungry during a crisis. These free, pre-packed emergency Food Boxes are designed to provide short-term, emergency support for anyone in need.

- **Money Management Help – CAP**

(In partnership with CAP: Christians Against Poverty, in Ashford.)

CAP offers free, impartial advice and support to become debt free. People can get in touch with CAP on 0800 328 0006 to book an appointment with a debt coach in Ashford. We also offer free 3-week courses that help individuals learn how to better manage their money.

THE BEEHIVE

A second-hand women's clothing boutique (not a 'charity shop'), community café and training hub in the heart of Ashford with a passion about creating space for people to thrive.

Our aim has always been, that every woman who enters our shop is made to feel beautiful, valued and that they matter; whether that is a volunteer, customer or client.

At the very heart of The Beehive is a place where women who can't afford clothing can be referred by local services to come and get clothes for free.

It is a place of dignity and beauty where paying customers and referred women, share the very same boutique experience – the difference is that when the clothes are scanned into the till, our referred women's total clocks up to £0.

The café offers a space where people can sit and enjoy coffee and cake; have a rest and catch their breath.

Coffee Club

Building community one mug of coffee (or tea) at a time. Coffee Club meets on the morning of the third Wednesday of the month at The Beehive. It's a great place to meet new people over coffee and cake.

Beehive Book Club

A very relaxed chat in The Beehive about a different book each month.

Ashford Sings! community choir

Ashford Sings! is made up of local people – no auditions required. The aim of the choir is simple – have fun singing together and then take our voices to various locations around Ashford, the surrounding area and beyond, to spread a little joy!

Partnerships

We work closely with several local bodies such as **Ashford Borough Council** where we support a number of their homeless residents. We also receive referrals from **Kent County Council Social Services** and the local **NHS Health Visitors**. In addition, we link with several **local schools** who refer families facing difficulties. Related to these, **Ashford Street Pastors** also refer individuals they encounter who need additional support.

**PNEUMA CHURCH
(A COMPANY LIMITED BY GUARANTEE)**

**TRUSTEES REPORT
FOR THE YEAR ENDED 31 MARCH 2024**

Other partners where we support their work are **Home for Good**, a fostering and adoption agency, where we both promote their work, give money and have several families who foster children; **Compassion UK** who work with families in the developing world and some of us sponsor young people through them. We also support Street Pastors, Ashford with funds and volunteer recruitment. Finally, we sponsor **Every Life**, an agency working with families in the poorest communities in Uganda.

Achievements and Performance

Through 2023-24 we connected with over 3,300 individuals through our range of activities. These are served by a core of 11 staff and 150 volunteers. We are constantly striving to grow in all areas of our charity, with attendance increasing on Sunday mornings, and the numbers of families being impacted by our **Compassion** projects and the **Beehive** steadily increasing.

Over the course of the reporting period Pneuma Compassion has had over 4,000 interactions with 600 families and individuals. This includes supplying food parcels, members of our 'Renew' social supermarket, those receiving children's clothes and equipment along with furniture and other support. We currently employ 2 members of staff (1.33FTE) who oversee the running of the multiple projects and meet with clients one to one to help guide them to a place where they no longer require our services. Grant funding has been spent on meeting people's needs encountered from both food and furniture poverty, with £2,000 being spent on food, alongside donations we receive from local supermarkets and individuals.

The Beehive has seen many women attending courses centred around coaching and opportunities to grow in self-confidence and wellbeing. We have offered free shopping appointments to 98 women referred from many different sources, including the NHS and Social Services with the average cost per appointment, where a lady receives clothing as well as a drink and cake, being £60. During the reporting period we employed 3 staff (2.1 FTE), to oversee the running of the project. The cost of the lease on the shop is a key expense which is £16,800/year. All clothing stock is donated.

Pneuma Sundays saw an average of around 100 adults, 30 primary school age and 15 secondary school age children on a Sunday morning. Numbers have gradually increased throughout the year, and we are looking at opportunities to further facilitate this growth. Regarding children and young people; in January 2024 we employed a pastor to specifically work with children and young people and their families and by the end of the financial year this had led to growth in the numbers of secondary school aged children accessing Sunday mornings as well as our other youth provision in the week.

Ashford Sings! is a community choir sponsored by Pneuma Church. This has a membership of 217 with an average of 136 attending each Sunday evening for practice and sections of the choir meeting regularly to practice their parts. They have performed around 10 'gigs' throughout the year at various locations across Ashford and, at Christmas, in Trafalgar Square. AS! also took 105 'on tour' to Holland in April 2023 where they performed several times each day over the three day trip. They have raised £411 for Pilgrims Hospice, through donations at 'gigs' and their annual Quiz Night. AS! is a strong community, regularly meeting together for social events outside of 'gigs'.

Volunteers play a central part in the delivery of our aims and objectives. We have around 150 volunteers covering roles at every level of the charity. These include hospitality, technical systems, guest services, finance, administration, Kids and Youth work, building maintenance, appointment facilitators in the Beehive and Storehouse, musicians and trustees. Most volunteers give 3-4 hours per week and the total number of volunteer hours given over the year is approximately 12,000.

Over the last year we have baptised 24 people of different ages, some at the Warehouse and some at Dymchurch beach. This is an increase on the previous year. Our **Family Feast** started in late 2023 and is well attended with over 100 people coming together for lunch each month. This enables people to connect and feel part of community.

Financial Review

The charity achieved a surplus of £28,038 in this financial year. This is in comparison to the deficit of £35,230 from the year before. Both income and expenditure have increased over this period. General giving income and donations have increased by a small percentage in comparison to last year. Grant funding received increased from £16,364 to £73,316 with grants being provided to purchase a van to support our Compassion projects and a large grant from the National Lottery to support in the running of the food bank. There are also grants in place which pay annually to the Beehive and Compassion projects. The introduction of asking for a donation to our Life to the City gathering has proved successful with people willing to contribute for those events, alongside other children's and youth one off events.

The charity has a policy for holding reserves (see Finance Policy, section 4.9). The Trustees agreed to hold reserves covering approximately one month's expenditure to allow for a temporary shortfall in income, or unexpected expenditure, thereby ensuring that the charity will be able to continue to fulfil its charitable objectives. Throughout the last financial year work has been done to build up the reserves and this work will continue into the next financial year following the deficit last year. The unrestricted net current assets (also known as free reserves) currently show a small deficit of £2,578. The aim is to bring this back to a positive position in the next financial year.

The Trustees will endeavor not to set aside funds unnecessarily. The trustees have assessed the major risks to which the charity is exposed and are satisfied that there are systems in place to mitigate exposure to the major risks.

Funds held as custodian trustees on behalf of others

None

**PNEUMA CHURCH
(A COMPANY LIMITED BY GUARANTEE)**

**TRUSTEES REPORT
FOR THE YEAR ENDED 31 MARCH 2024**

Structure, Governance and Management

The charity is controlled by its governing document, a deed of trust, and constitutes a limited company, limited by guarantee, as defined by the Companies Act 2006.

The trustees, who are also the directors for the purpose of company law, and who served during the year and up to the date of signature of the financial statements were:

Mr C M Kimmance	Mr J K Henderson (Resigned 25 March 2024)
Mrs R Tomsett (nee Jenkins)	Mrs L Mitchell
Mrs E Davies	Mr I Witts (resigned 14 December 2023)
Mr R M L Eason	

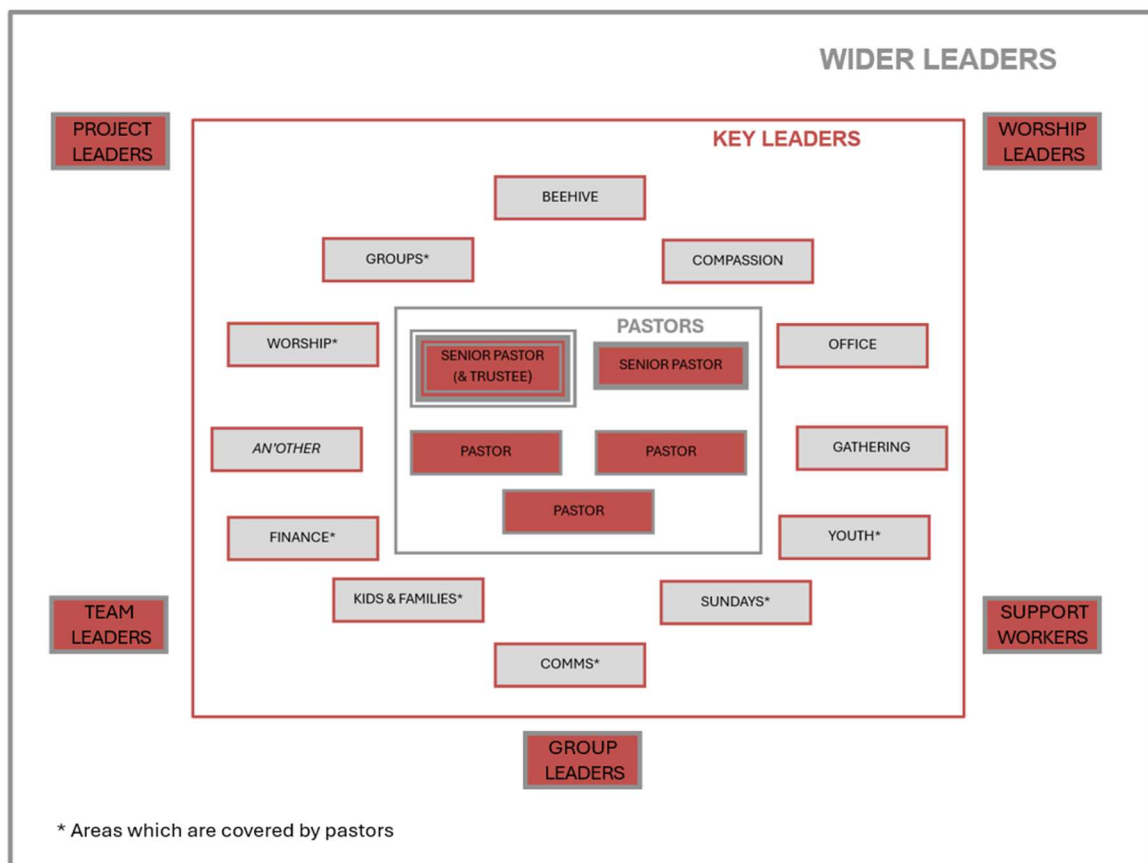
None of the trustees has any beneficial interest in the company. All the trustees are members of the company and guarantee to contribute £1 in the event of a winding up.

Trustees are recruited in accordance with our [Trustee Recruitment Policy](#) based in skills and experience. After attending an initial Trustees meeting they are 'buddied' with an experienced trustee until they are familiar with our operations. Following this, each Trustee will take on a portfolio. These cover Finance, HR, Health & Safety, Safeguarding, Risk and Governance.

The trustees monitor from the outside, working with the leaders to revise policies where necessary and checking that these policies are understood and implemented to the best ability of the leaders.

Organisational Structure

The charity employs a staff team who are led by the Senior Pastors (see Organisational Structure), one of which is also a trustee. Each Trustee holds an oversight portfolio and, alongside their staff counterparts, reports to the Trustees quarterly through the year.



Definitions & Roles

Senior Pastors

The people that carry the Pneuma Church name and are ultimately accountable before God for carrying the vision that God has given to Pneuma Church in bringing life to Ashford and beyond.

Pastors

People who carry some of that wider vision and can create something out of nothing, heal wounds, carry vision, see the whole, see what God is doing and more. With the Senior Pastors, they make up the pastors. The aim of this team is to be the people authorising decisions, discerning what God is saying/doing and championing the key leaders. All types of wonderings/decisions will come to that team. 'We think God might be saying this' or how we have gone back and forth between the pastorate and the

**PNEUMA CHURCH
(A COMPANY LIMITED BY GUARANTEE)**

**TRUSTEES REPORT
FOR THE YEAR ENDED 31 MARCH 2024**

Key Leaders over the reimagining of our aims and culture.

Key Leaders

These are key in making the vision of Pneuma Church happen and carry an overall responsibility for key areas of church life. Each key leader has 'a piece of the pie'. They are a crucial and precious part of what God is doing in Ashford through Pneuma Church. They are from all areas covered by the vision of Pneuma Church, working to bring their area of responsibility to life and see it be as effective it can be. As a team, we meet together to better understand the whole, to worship together, to chew over big decisions and to move forward in unity that can be brought about only by God's Spirit.

Wider Leaders

These are people that lead a team, or a circle, or lead worship or a project or are a support worker. The wider leaders are an incredible group of people that are on the ground week after week and serve God and the people of Ashford with their leadership. They will all have a key leader that champions them.

NB: 'Another' on the above grid would be taken by seasonal roles. These would include Christmas and then maybe also in the future we would look to include the chair of Trustees and see the Kingdom Academy represented too.

Decision Making

Operations and annual planning

As above, most day-to-day decisions and vision development are made by the Pastors and Key Leaders in response to needs and God's leading. However, for the wider strategic planning and budgets, the Leadership Team prepares these annually for presentation to the Trustees before or at the beginning of the financial year for approval. All agreed budgets then require no further approval. The finance committee, which includes a nominated trustee, meets monthly, with reports available to Trustees and monthly budget figures openly available to Trustees. A full report is presented at the quarterly Trustees' meetings. Any unbudgeted expenditure over £5k must be approved by Trustees.

Pay and remuneration

Pneuma Church is committed to being a Real Living Wage employer for all people over 25 as per the guidance outlined by the Living Wage Foundation.

People's salaries have been set according to several factors:

- What their salary is in their previous job (if they are changing job)
- What similar roles are paid in other setting (churches, third sector and business)
- Adjustments according to location (what people are paid around this area)
- What other people are paid within Pneuma Church
- The level of responsibility, particularly whether they oversee other people.

The current staff/roles pay bands and increments have been set by the leadership, communicated with staff and agreed by Trustees. See: policy [here](#)

Long- and Short-Term Goals

Our goals are focused on expanding our vision of 'Bringing Life to the City' through our six areas of focus:

- Increasing people's connection to God as Father
- Improving health and well-being
- Reducing the impact of poverty
- Developing leaders
- Improving aspirations and opportunities for children & young people
- Strengthening families

Generally, in the **short term** we plan to continue with our current programmes, which are effective in fulfilling our Objects and Vision. However, one short term challenge is that the lease on our current premises is due to expire in June 2025, which we could extend but, we are finding the premises are too small for our current activities and definitely not big enough for our longer-term goals. This will require us to raise funds to cover the likely increased cost of a new building, which may initially be a short lease on a bigger unit, potentially increasing our rent towards £100,000/year or above. Another short(ish) term goal is to start 'Pneuma to the Nations', which is a programme of hosting and placing people with partners in other locations (UK and abroad) to learn from the partners and to replicate our successes in those places – this is part of our wider 'Bringing Life to the City' vision.

For the **longer term** we want to expand our work to include an 'academy' and supported social accommodation. In addition, we need a larger auditorium and dedicated space for our Compassion work, KIDS and Youth, and possibly incorporate The Beehive, where their lease is due for renewal in October 2025. For this we would prefer our own building, which may include accommodation, but this could be elsewhere. The cost of this is likely to be around £4 million which will require active fundraising and probably a mortgage. The accommodation aspect could be largely covered by a partnership with [Green Pastures](#) or [Hope Into Action](#), who work with local churches to buy premises for the homeless. We will also need more staff, but we will recruit these in line with achieving our fundraising and grants targets, which have been effective to date.

**PNEUMA CHURCH
(A COMPANY LIMITED BY GUARANTEE)**

**TRUSTEES REPORT
FOR THE YEAR ENDED 31 MARCH 2024**

Trustees Responsibilities

The Charities Act and the Companies Act require the Board of Trustees to prepare financial statements for each financial year which give a true and fair view of the state of affairs of the charity as at the end of the financial year and of the surplus or deficit of the charity. In preparing those financial statements the Board is required to:

- select suitable accounting policies and then apply them consistently;
- make judgements and estimates that are reasonable and prudent; and
- prepare the financial statements on the going concern basis unless it is inappropriate to presume that the charity will continue in operation
- state whether applicable accounting standards and statements of recommended practice have been followed, subject to any material departures disclosed and explained in the financial statements.

The trustees are responsible for maintaining adequate accounting records which disclose with reasonable accuracy at any time the financial position of the charity and which are sufficient to show and explain the charity's transactions and enable them to ensure that the financial statements comply with the Companies Act 2006 and comply with regulations made under the Charities Act. They are also responsible for safeguarding the assets of the charity and hence for taking reasonable steps for the prevention and detection of fraud and other irregularities.

The trustees are also responsible for the contents of the trustees' report, and the responsibility of the independent examiner in relation to the trustees' report is limited to examining the report and ensuring that, on the face of the report, there are no inconsistencies with the figures disclosed in the financial statements.

These accounts have been prepared in accordance with the provisions applicable to companies subject to the small companies' regime.

This Report was approved by the Trustees on 16th December 2024 and signed on their behalf by:



Richard Eason

Trustee, on behalf of the Board

PNEUMA CHURCH

INDEPENDENT EXAMINERS REPORT TO THE MEMBERS OF PNEUMA CHURCH

I report to the trustees on my examination of the accounts of Pneuma Church for the year ended 31st March 2024.

Responsibilities and basis of report

As the charity's trustees of the charitable company (who are also the directors of the company for the purposes of company law), you are responsible for the preparation of the accounts in accordance with the requirements of the Companies Act 2006 ("the 2006 Act").

Having satisfied myself that the accounts of the charitable company are not required to be audited for this year under Part 16 of the 2006 Act and are eligible for independent examination, I report in respect of my examination of your charity's accounts as carried out under section 145 of the Charities Act 2011 ("the 2011 Act"). In carrying out my examination, I have followed the Directions given by the Charity Commission (under section 145(5)(b) of the 2011 Act).

The company's gross income exceeded £250,000 and I am qualified to undertake the examination by being a member of The Association of Charity Independent Examiners.


Independent examiner's statement

I have completed my examination. I confirm that apart from the matter disclosed below, no other material matters have come to my attention which gives me cause to believe that:

- accounting records were not kept in accordance with section 386 of the Companies Act 2006; or
- the accounts do not accord with such records; or
- the accounts do not comply with relevant accounting requirements under section 396 of the Companies Act 2006 other than any requirement that the accounts give a 'true and fair' view which is not a matter considered as part of an independent examination; or
- the accounts have not been prepared in accordance with the Charities SORP (FRS102).

The Examiner has drawn to the attention of the charity management the fact that some of the restricted funds held (namely Mens Shed) relates to a project that finished many years ago. The Trustees have been advised to attempt to contact the original donors to obtain permission for the restriction to be lifted or transferred to another similar project, or failing that, to contact the Charity Commission for further guidance.

I have no concerns and have come across no other matters in connection with the examination to which attention should be drawn in this report in order to enable a proper understanding of the accounts to be reached.

Signed: 

Name: J Irvine-Smith FCIE

Date: 18 December 2024

Independent Examiners Ltd
Unit 2 The Broadbridge Business Centre
Delling Lane
Bosham
West Sussex
PO18 8NF

PNEUMA CHURCH
(A COMPANY LIMITED BY GUARANTEE)

STATEMENT OF FINANCIAL ACTIVITIES INCORPORATING INCOME AND EXPENDITURE ACCOUNT
FOR THE YEAR ENDED 31 MARCH 2024

	Notes	Unrestricted Funds £	Restricted Funds £	TOTAL 2024 £	TOTAL 2023 £
Income from:					
Donations and legacies	2a	270,225	115,347	385,572	317,560
Charitable activities	2b	11,427	104,427	115,854	61,471
Investments	2c	143	214	357	220
Other Trading activities	2d	2,123	5,475	7,598	2,149
Other Income	2e	128	1,682	1,810	-
Total income		<u>284,046</u>	<u>227,145</u>	<u>511,191</u>	<u>381,400</u>
Expenditure on:					
Charitable activities	3a, 3b	282,181	200,972	483,153	416,630
Total Expenditure		<u>282,181</u>	<u>200,972</u>	<u>483,153</u>	<u>416,630</u>
Net income/expenditure before other recognised gains and losses		1,865	26,173	28,038	(35,230)
Transfers between funds	11	-	-	-	-
Net movement in funds		<u>1,865</u>	<u>26,173</u>	<u>28,038</u>	<u>(35,230)</u>
Reconciliation of funds:					
Total Funds Brought Forward		7,734	57,714	65,448	100,678
Total Funds Carried Forward		<u>9,599</u>	<u>83,887</u>	<u>93,486</u>	<u>65,448</u>

Movements on all reserves and all recognised gains and losses are shown above. All of the organisation's operations are classed as continuing.

The notes on pages 13 to 26 form part of these financial statements.

PNEUMA CHURCH
(A COMPANY LIMITED BY GUARANTEE)

Reg.company no.08824457

BALANCE SHEET
AS AT 31 MARCH 2024

	Note	Unrestricted Funds £	Restricted Funds £	31.3.24 Total £	31.3.23 Total £
Fixed Assets:					
Tangible assets	6	12,177	4,317	16,494	19,683
Current Assets:					
Debtors	7	5,030	-	5,030	4,634
Cash at bank and in hand		361	79,570	79,931	59,600
Total Current Assets		<u>5,391</u>	<u>79,570</u>	<u>84,961</u>	<u>64,234</u>
Creditors: amounts falling due within one year	8	(7,969)	-	(7,969)	(18,469)
NET CURRENT ASSETS		<u>(2,578)</u>	<u>79,570</u>	<u>76,992</u>	<u>45,765</u>
TOTAL ASSETS less current liabilities		<u>9,599</u>	<u>83,887</u>	<u>93,486</u>	<u>65,448</u>
NET ASSETS		<u>9,599</u>	<u>83,887</u>	<u>93,486</u>	<u>65,448</u>
Funds of the Charity	11				
General Unrestricted Funds		9,599	-	9,599	7,734
Restricted Funds		-	83,887	83,887	57,714
Total Funds		<u>9,599</u>	<u>83,887</u>	<u>93,486</u>	<u>65,448</u>

Directors' Responsibilities:

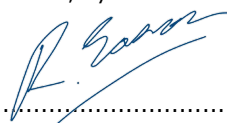
The company was entitled to exemption from audit under s477 of the Companies Act 2006 relating to small companies.

The members have not required the company to obtain an audit in accordance with section 476 of the Companies Act 2006.

The directors acknowledge their responsibilities for complying with the requirements of the Companies Act with respect to accounting records and the preparation of accounts.

These accounts have been prepared in accordance with the provisions applicable to small companies subject to the small companies regime and in accordance with FRS102 SORP.

The financial statements were approved and authorised for issue by the Trustees on Monday 16th December 2024 and signed on their behalf, by:



Trustee, on behalf of the Board

R Eason

PNEUMA CHURCH
(A COMPANY LIMITED BY GUARANTEE)
NOTES TO THE FINANCIAL STATEMENTS
FOR THE YEAR ENDED 31 MARCH 2024

1. Accounting policies

a) Basis of preparation

The principal accounting policies adopted, judgements and key sources of estimation uncertainty in the preparation of the financial statements are as follows:

The financial statements have been prepared in accordance with Accounting and Reporting by Charities: Statement of Recommended Practice applicable to charities preparing their accounts in accordance with the Financial Reporting Standard applicable in the UK and Republic of Ireland (FRS 102) (effective 1 January 2019) - (Charities SORP (FRS 102)), the Financial Reporting Standard applicable in the UK and Republic of Ireland (FRS 102) and the Companies Act 2006.

Pneuma Church meets the definition of a public benefit entity under FRS 102. Assets and liabilities are initially recognised at historical cost or transaction value unless otherwise stated in the relevant accounting policy.

The charity has taken advantage of the provisions in the SORP for charities applying FRS 102 Update Bulletin 1 not to prepare a Statement of Cash Flows.

The financial statements are prepared in sterling, which is the functional currency of the charity. Monetary amounts in these financial statements are rounded to the nearest £1. There may be minor discrepancies as pence are not being shown.

b) Changes to accounting estimates

There have been no changes to accounting estimates in the reporting period.

c) Material prior period errors and changes to previous accounts

No material prior period errors have been identified in this accounting period and there have been no changes to previous accounts.

d) Preparation of accounts on a going concern basis

Preparation of the accounts is on a going concern basis. The Trustees are of the view that the level of reserves will support the charity going forward.

e) Income

Income is included in the Statement of Financial Activities (SoFA) when:

- the charity becomes entitled to the income;
- it is more likely than not that the trustees will receive the resources; and
- the monetary value can be measured with sufficient reliability.

f) Interest receivable

Interest on funds held on deposit is included when receipt is probable and the amount can be measured reliably by the charity; this is normally upon notification of the interest paid or payable by the Bank.

g) Grants and Donations

Grants and donations are only included in the SoFA when the general income recognition criteria are met (5.10 to 5.12 FRS 102 SORP).

h) Tax Reclaims on Donations and Gifts

Gift Aid receivable is included in income when there is a valid declaration from the donor. Any Gift Aid amount recovered on a donation is considered to be part of that gift and is treated as an addition to the same fund as the initial donation unless the donor or the terms of the appeal have specified otherwise.

i) Government Grants

The charity has received government grants totalling £28,256 in the reporting period.

PNEUMA CHURCH
(A COMPANY LIMITED BY GUARANTEE)
NOTES TO THE FINANCIAL STATEMENTS
FOR THE YEAR ENDED 31 MARCH 2024

j) Fund accounting

Unrestricted funds are available for use at the discretion of the trustees in furtherance of their charitable objectives unless the funds have been designated for other purposes.

Restricted funds are subject to specific conditions by donors as to how they may be used. The purposes and uses of the restricted funds are set out in the notes to the financial statements.

Endowment funds are subject to specific conditions by donors that the capital must be maintained by the charity.

k) Expenditure

Expenditure is accounted for on an accruals basis and has been classified under headings that aggregate all cost related to the category. Where costs cannot be directly attributed to particular headings they have been allocated to activities on a basis consistent with the use of resources. Grants offered subject to conditions which have not been met at the year end date are noted as a commitment but not accrued as expenditure.

l) Offsetting

There has been no offsetting of assets and liabilities, or income and expenses, unless required or permitted by the FRS 102 SORP or FRS 102.

m) Operating leases

Rental charges payable under operating leases are charged on a straight line basis over the terms of the lease.

n) Taxation

The charity is exempt from tax on its charitable activities.

o) Legal status of the charity

The charity is a company limited by guarantee and has no share capital. In the event of the charity being wound up, the liability in respect of the guarantee is limited to £1 per member of the charity.

p) Redundancy payments

The charity made no redundancy payments during the period.

q) Pensions

The company operates a defined contribution pension scheme and the pension charge represents the amounts payable by the company to the fund in respect of the year.

r) Debtors

Debtors (including trade debtors and loans receivable) are measured on initial recognition at settlement amount after any trade discounts or amount advanced by the charity. Subsequently, they are measured at the cash or other consideration expected to be received.

s) Creditors

The charity has creditors which are measured at settlement amounts less any trade discounts.

t) Tangible Fixed Assets

Tangible fixed assets are initially measured at cost and subsequently measured at cost or valuation, net of depreciation and any impairment losses.

Depreciation is recognised so as to write off the cost or valuation of assets less their residual values over their useful lives on the following basis:

Leasehold improvements 10% on cost until 31.3.20. From 1.4.20: 35% on cost
Plant and equipment 20% on reducing balance
Fixtures and fittings 20% on reducing balance
Computers 33% on cost

The gain or loss arising on the disposal of an asset is determined as the difference between the sale proceeds and the carrying value of the asset, and is recognised in net income/(expenditure) for the year.

PNEUMA CHURCH
(A COMPANY LIMITED BY GUARANTEE)

NOTES TO THE FINANCIAL STATEMENTS (continued)
FOR THE YEAR ENDED 31 MARCH 2024

2. INCOME FROM:	Note	Unrestricted Funds £	Restricted Funds £	TOTAL 2024 £	TOTAL 2023 £
a) Donations and legacies					
Compassion gifts		-	9,831	9,831	202
Donations and gifts		263,988	38,437	302,425	300,993
Grants - local government		1,237	27,019	28,256	8,189
Grants - other trusts and foundations		5,000	40,060	45,060	8,175
		<u>270,225</u>	<u>115,347</u>	<u>385,572</u>	<u>317,560</u>
b) Charitable activities					
Charitable rental income		1,674	580	2,254	5,215
Sales within charitable activities		61	61,015	61,076	49,395
Ashford Sings Income		-	9,930	9,930	-
Tour Payments		9,692	32,902	42,594	6,861
		<u>11,427</u>	<u>104,427</u>	<u>115,854</u>	<u>61,471</u>
c) Investments					
Interest receivable		143	214	357	220
		<u>143</u>	<u>214</u>	<u>357</u>	<u>220</u>
d) Other Trading activities					
Fundraising events		2,123	5,475	7,598	2,149
		<u>2,123</u>	<u>5,475</u>	<u>7,598</u>	<u>2,149</u>
e) Other Income					
Insurance Claim		-	1,682	1,682	-
Refund of Business Rates		128	-	128	-
		<u>128</u>	<u>1,682</u>	<u>1,810</u>	<u>-</u>

PNEUMA CHURCH
(A COMPANY LIMITED BY GUARANTEE)

NOTES TO THE FINANCIAL STATEMENTS (continued)
FOR THE YEAR ENDED 31 MARCH 2024

3. EXPENDITURE ON

	Unrestricted Funds £	Restricted Funds £	TOTAL 2024 £	TOTAL 2023 £
Charitable activities				
a) Direct Costs				
Staff costs	159,061	63,815	222,876	244,561
Staff training	3,931	871	4,802	2,829
Travel and subsistence	1,516	43,010	44,526	6,744
Giving out and Compassion	6,314	5,298	11,612	6,793
Piano Costs	-	-	-	-
Refreshments	5,979	3,493	9,472	11,458
Other ministry costs	4,897	9,892	14,789	18,896
Sings! And UK Sings! Expenses	106	4,228	4,334	3,761
Sings! tour costs	-	12,813	12,813	-
Cost of Goods Sold	-	13,093	13,093	6,640
b) Governance costs				
Accountancy and Bookkeeping (includes accounts software)	128	-	128	421
Independent Examiners Fees	2,220	-	2,220	2,160
Share of support costs (note 4)	98,029	44,459	142,488	112,367
	282,181	200,972	483,153	416,630

PNEUMA CHURCH
(A COMPANY LIMITED BY GUARANTEE)

NOTES TO THE FINANCIAL STATEMENTS (continued)
FOR THE YEAR ENDED 31 MARCH 2024

4. ANALYSIS OF EXPENDITURE BY TYPE

	Support costs		TOTAL	TOTAL
	Unrestricted Funds	Restricted Funds		
	£	£	2024 £	2023 £
Advertising	577	1,114	1,691	864
Audio Visual costs	879	1,204	2,083	1,312
Book Sales paid over	75	-	75	-
Bank charges	112	1,178	1,290	969
Depreciation	6,217	1,047	7,264	4,674
Entertainment	1,048	579	1,627	1,874
Insurance	1,246	478	1,724	1,544
Legal and professional fees	1,063	27	1,090	1,649
Light and heat	13,274	4,628	17,902	13,795
Operating lease charges and rent	51,458	17,388	68,846	51,800
Premises cleaning and waste collection	2,855	464	3,319	1,620
Printing, postage and stationery	5,096	4,515	9,611	11,149
Rates and water	3,082	-	3,082	3,274
Repairs and maintenance	1,981	8,625	10,606	5,764
Subscriptions and licences	4,259	1,590	5,849	7,006
Sundries	13	56	69	-
Telephone	4,794	1,566	6,360	5,073
Total 2024	98,029	44,459	142,488	112,367
Total 2023	76,000	36,367		112,367

5. NET INCOME/(EXPENDITURE)

This is stated after charging:

	TOTAL 2024 £	TOTAL 2023 £
Independent Examiners Fees	2,220	2,160

PNEUMA CHURCH
(A COMPANY LIMITED BY GUARANTEE)

NOTES TO THE FINANCIAL STATEMENTS (continued)
FOR THE YEAR ENDED 31 MARCH 2024

6. TANGIBLE FIXED ASSETS

		Fit for Purpose		Beehive	General	General	Total
		Restricted Fund	Restricted Fund	Restricted Fund	Unrestricted Fund	Unrestricted Fund	
		Leasehold Improvements £	Plant and Equipment £	Fixtures and Fittings £	Plant and Equipment £	Leasehold Improvements £	£
Cost	01-Apr-23	-	-	6,870	43,493	134,439	184,802
Additions		-	-	1,006	3,069	-	4,075
Disposals		-	-	-	-	-	-
Cost at	31-Mar-24	-	-	7,876	46,562	134,439	188,877
Depreciation	01-Apr-23	-	-	2,556	28,124	134,439	165,119
Disposals		-	-	-	-	-	-
Charge		-	-	1,003	6,261	-	7,264
Depreciation at	31-Mar-24	-	-	3,559	34,385	134,439	172,383
Net Book Value	31-Mar-24	-	£ -	4,317	12,177	-	16,494
Net Book Value	31-Mar-23	-	-	4,314	15,369	-	19,683

7. DEBTORS AND PREPAYMENTS

	Unrestricted Fund £	Restricted Fund £	Total 31.3.24 £	Total 31.3.23 £
Prepayments	-	-	-	694
Other debtors	5,030	-	5,030	3,940
	5,030	-	5,030	4,634

8. CREDITORS AND ACCRUALS: AMOUNTS FALLING DUE WITHIN ONE YEAR

	Unrestricted Fund £	Restricted Fund £	Total 31.3.24 £	Total 31.3.23 £
Accruals and deferred income	3,000	-	3,000	12,612
Independent Examiners Fees	2,220	-	2,220	2,160
Payroll Liabilities	117	-	117	47
Pension Contributions	-	-	-	705
Social Security costs	2,632	-	2,632	2,945
	7,969	-	7,969	18,469

**PNEUMA CHURCH
(A COMPANY LIMITED BY GUARANTEE)**

**NOTES TO THE FINANCIAL STATEMENTS (continued)
FOR THE YEAR ENDED 31 MARCH 2024**

8.a) DEFERRED INCOME

Deferred income brought forward 1st April 2023	9,612
Utilised in the year	(9,612)
	-
Receipts in 2023/2024	-
Deferred income as at 31st March 2024	-

Deferred Income represents funds received in advance for a tour that was postponed due to the Covid-19 pandemic.

**9. ANALYSIS OF STAFF COSTS, TRUSTEE REMUNERATION AND EXPENSES AND
THE COST OF KEY MANAGEMENT PERSONNEL**

	2024	2023
	£	£
Gross Wages and Salaries	210,255	232,231
Casual Wages	40	104
Social Security Costs	8,857	8,789
Employer's Pension Costs	3,725	3,437
	<u>222,876</u>	<u>244,561</u>

The average number of persons employed by the company during the year was as follows:

	2024	2023
Activities in furtherance of organisation's objectives	10	14
Administration	2	2

No employees received emoluments in excess of £60,000 (2023: Nil)

The key management personnel of the charity comprise the Trustees and Senior Management Team. The total employee benefits (including employer national insurance and employer pension contributions) of the key management personnel of the charity were £85,092 (2023: £89,008)

The charity offers a defined contribution pension scheme. The assets of the scheme are held separately from those of the charity, in an independently administered fund. The pension cost charge represents contributions payable by the charity to the fund and amounted to £3,725 (2023: £3,437).

In this financial period the charity has paid trustees remuneration and benefits (including Employer NI and Employer Pension contributions) for their roles as Church Pastor and Site Manager as follows:

<u>Name of Trustee</u>	<u>Legal authority</u>	<u>Amounts paid or benefit value</u>			
		Remuneration	Employer NI and Pension	2024 Total	2023 Total
		£	£	£	£
C Kimmance (Church Pastor)	Governing document	47,369	6,516	53,885	53,840
R Tomsett (Site Manager)	Governing document	8,752	-	8,752	8,665
		<u>56,121</u>	<u>6,516</u>	<u>62,637</u>	<u>62,505</u>

Trustee R Tomsett also received £40 (2023: £104) in payments for hosting outside events using the Warehouse facilities. This is unrelated to both her employment and trusteeship, and is paid on a casual basis.

Trustee C Kimmance was reimbursed £383 for the cost of Wildfire event tickets that he paid personally.

**PNEUMA CHURCH
(A COMPANY LIMITED BY GUARANTEE)**

**NOTES TO THE FINANCIAL STATEMENTS (continued)
FOR THE YEAR ENDED 31 MARCH 2024**

**9. ANALYSIS OF STAFF COSTS, TRUSTEE REMUNERATION AND EXPENSES AND
THE COST OF KEY MANAGEMENT PERSONNEL (continued)**

No trustees were remunerated for their role as a trustee. Two trustees received reimbursement for purchases made on behalf of the charity totalling £1,914 (2023: Three Trustees received reimbursements totalling £2,913).

In the period the charity has paid trustees expenses as follows:

	2024	2023
Number of trustees who were paid expenses	1	-
<u>Amount Paid</u>		
	2024	2023
	Total	Total
	£	£
Travel, mileage and subsistence	460	-
Total amount paid	£ 460	-

10. RELATED PARTY TRANSACTIONS

In the period the charity has paid remuneration to a related party, for their roles as Church Pastor and Beehive Project Administrator as follows:

<u>Name of related party</u>	<u>Related party to</u>	<u>Amounts paid or benefit value</u>			
		Remuneration	Employer NI and Pension	2024 Total	2023 Total
		£	£	£	£
N Kimmance (Church Pastor)	C Kimmance (Trustee)	20,255	2,201	22,456	26,504
		20,255	2,201	22,456	26,504

The Trustees granted C and N Kimmance a sabbatical period during the 2023-2024 financial year. Members of the church donated a total of £1,100 to enable them to travel as part of that sabbatical. This amount was paid over to C and N Kimmance at the start of their sabbatical.

PNEUMA CHURCH
(A COMPANY LIMITED BY GUARANTEE)

NOTES TO THE FINANCIAL STATEMENTS (continued)
FOR THE YEAR ENDED 31 MARCH 2024

11. STATEMENT OF FUNDS

Statement of Funds

	Current Year - 2024				
	Balance	Income	Expenditure	Transfers	Balance
	01-Apr-23 £	£	£	£	31-Mar-24 £
<u>Unrestricted funds</u>					
General Unrestricted Funds	7,734	284,046	(282,181)	-	9,599
<u>Restricted funds</u>					
Mens Shed	982	-	-	-	982
Compassion	1,235	62,698	(32,481)	-	31,452
Ashford Sings!	50,652	52,524	(70,469)	-	32,707
Beehive	4,844	111,923	(98,022)	-	18,746
	57,714	227,145	(200,972)	-	83,887
TOTAL FUNDS	65,448	511,191	(483,153)	-	93,486

Restricted Funds are represented by:

	AS Sings!	Beehive	Main church				31-Mar-24
	bank	bank/PayPal	bank/s	Debtors	Creditors	Fixed Assets	TOTAL
	£	£	£	£	£	£	£
Mens Shed	-	-	982	-	-	-	982
Compassion	-	-	31,452	-	-	-	31,452
Ashford Sings!	14,007	-	17,146	-	-	1,555	32,707
Beehive	-	15,264	170	-	-	3,312	18,746
	14,007	15,264	49,749	-	-	4,867	83,887

**PNEUMA CHURCH
(A COMPANY LIMITED BY GUARANTEE)**

**NOTES TO THE FINANCIAL STATEMENTS (continued)
FOR THE YEAR ENDED 31 MARCH 2024**

11. STATEMENT OF FUNDS

Statement of Funds

	Prior Year - 2023				
	Balance	Income	Expenditure	Transfers	Balance
	01-Apr-22				31-Mar-23
	£	£	£	£	£
<u>Unrestricted funds</u>					
General Unrestricted Funds	35,386	256,915	(280,933)	(3,634)	7,734
<u>Restricted funds</u>					
Mens Shed	982	-	-	-	982
Compassion	25,849	16,800	(41,414)	-	1,235
Ashford Sings!	26,305	34,884	(10,537)	-	50,652
Beehive	6,158	72,800	(83,746)	9,632	4,844
Fit for Purpose *	5,998	-	-	(5,998)	-
	65,292	124,484	(135,697)	3,634	57,714
TOTAL FUNDS	100,678	381,399	(416,630)	-	65,448

Restricted Funds are represented by:

	AS Sings! bank	Beehive bank	Main church bank/s	Debtors	Creditors	Fixed Assets	31-Mar-23 TOTAL
	£			£	£	£	£
Mens Shed	-	-	982	-	-	-	982
Compassion	-	-	1,235	-	-	-	1,235
Ashford Sings!	39,697	-	10,262	694	-	-	50,653
Beehive	-	530	-	-	-	4,314	4,844
	39,697	530	12,479	694	-	4,314	57,714

* The Fit for Purpose Fund was declared finished in 2018. The restriction placed on fixed assets purchased from those funds was fulfilled once the asset had been purchased. The assets have therefore been transferred to the general unrestricted fund.

Purpose of Restricted Funds:

Mens Shed	The Men's Shed Fund is used to provide opportunities for men to participate in practical group activities such as engineering projects, woodworking or gardening, where they can share and learn new skills by working 'shoulder to shoulder' to support one another. The Men's Shed project was closed in the summer of 2020. With the agreement of the Men's Sheds organisation, the physical items bought with grant money were donated to other, local groups who were providing a similar facility. The Trustees intend to seek to reallocate any remaining cash funds to a current project with similar aims.
Compassion	Compassion is the arm of the church that helps to support and empower the local community to lead more fulfilled lives. This embodies a number of projects. The main project is "Renew", which has received generous funding from Ashford Borough Council. Again, the WHH Meals was a time limited project during Covid Lockdown, which has now ended; as was the Covid-19 Relief Fund.
Ashford Sings!	Ashford Sings! is a community choir sponsored and operated by Pneuma Church. It offers weekly rehearsals, arranges quizzes and concerts in aid of local causes, and does an annual tour to Europe.
Beehive	The Beehive is a secondhand clothing boutique that offers a personal shopping service to ladies who come in for clothing. Some ladies are referred to The Beehive by social services or GPs etc and will then be given clothes for free. The Beehive also runs life-skills groups from its property in Ashford.

PNEUMA CHURCH
(A COMPANY LIMITED BY GUARANTEE)

NOTES TO THE FINANCIAL STATEMENTS (continued)
FOR THE YEAR ENDED 31 MARCH 2024

12. SUMMARY OF FUNDS

Summary of funds

Summary of funds	Current year - 2024				
	Balance	Income	Expenditure	Transfers	Balance
	01-Apr-23				31-Mar-24
	£	£	£	£	£
General funds	7,734	284,046	(282,181)	-	9,599
Restricted funds	57,714	227,145	(200,972)	-	83,887
	65,448	511,191	(483,153)	-	93,486

	Prior Year - 2023				
	Balance 01-Apr-22	Income	Expenditure	Transfers	Balance 31-Mar-23
	£	£	£	£	£
General funds	35,386	256,915	(280,933)	(3,634)	7,734
Restricted funds	65,292	124,485	(135,697)	3,634	57,714
	100,678	381,400	(416,630)	-	65,448

13. ANALYSIS OF NET ASSETS BETWEEN FUNDS

	Current year - 2024		
	Unrestricted	Restricted	Total
	Fund	Fund	2024
	£	£	£
Tangible assets	12,177	4,317	16,494
Current assets	5,391	79,570	84,961
Creditors due within one year	(7,969)	-	(7,969)
	9,599	83,887	93,486

	Prior year - 2023		
	Unrestricted	Restricted	Total
	Fund	Fund	2023
	£	£	£
Tangible assets	15,369	4,314	19,683
Current assets	10,834	53,400	64,234
Creditors due within one year	(18,469)	-	(18,469)
	7,734	57,714	65,448

**PNEUMA CHURCH
(A COMPANY LIMITED BY GUARANTEE)**

**NOTES TO THE FINANCIAL STATEMENTS (continued)
FOR THE YEAR ENDED 31 MARCH 2024**

14. OTHER DISCLOSURES

The charity does not have any commitments not provided for in the accounts.

The charity has not given any guarantees.

The charity has not received any loans secured on any of its assets.

At the year end the charity did not have any contingent liabilities.

15. RISK ASSESSMENT

The trustees are aware of the need to properly manage and mitigate the risks faced by the company. Details of how the charity has achieved this are provided in the Trustees' Report. The trustees confirm that they have paid due regard to the Charity Commission guidance on risk assessment when adopting and implementing policies for the charity

16. PUBLIC BENEFIT

The charity acknowledges its requirements to demonstrate clearly that it must have charitable purposes or "aims" that are for the public benefit. Details of how the charity has achieved this are provided in the Trustees' Report. The trustees confirm that they have paid due regard to the Charity Commission guidance on public benefit before deciding what activities the charity should undertake.

17. DECLARATIONS

Sufficient resources are held in appropriate form to enable each fund to be applied in accordance with any restrictions imposed.

The trustees have not changed the year end date nor length of the charity's financial year.

The charity did not make any material ex-gratia payments during the year.

The trustees confirm that there is no relevant information of which the Independent Examiner is unaware.

PNEUMA CHURCH
(A COMPANY LIMITED BY GUARANTEE)

STATEMENT OF CASHFLOWS
FOR THE YEAR ENDED 31 MARCH 2024

		2024/23	2023/22
		£	£
Cash provided by/(used in) operating activities	(a)	24,049	(29,997)
Cash used from investing activities			
Interest income		357	220
Purchase of tangible fixed assets		(4,075)	(5,277)
Cash provided by/(used in) investing activities		(3,718)	(5,057)
Cash flows from financing activities			
Introduction/(Repayment) of long term borrowing		-	-
Cash used in financing activities		-	-
Increase/(decrease) in cash and cash equivalents in the year		20,331	(35,054)
Cash and cash equivalents at the start of the year		59,600	94,654
TOTAL cash and cash equivalents at the end of the year	(b)	79,931	59,600

(a) Reconciliation of net movement in funds to net cash flow from operating activities

	2024/23	2023/22
	£	£
Net movement in funds	28,038	(35,230)
Add back depreciation charge	7,264	4,675
Deduct interest income shown in investing activities	(357)	(220)
Decrease/(increase) in debtors	(396)	-
Increase/(decrease) in creditors	(10,500)	778
Net cash provided by/(used in) operating activities	24,049	(29,997)

PNEUMA CHURCH
(A COMPANY LIMITED BY GUARANTEE)

STATEMENT OF CASHFLOWS
FOR THE YEAR ENDED 31 MARCH 2024

(b) Analysis of cash and cash equivalents

	2024/23	2023/22
	£	£
Cash at bank and in hand	79,931	59,600
Fixed Term Bond	-	-
Total cash and cash equivalents	79,931	59,600

(c) Analysis of changes in net debt

	At start of year	Cash flows	Acquisition/ disposal of subsidiaries	New finance leases	Fair value movements	Foreign exchange movements	At end of year
	£	£	£	£	£	£	£
Cash	59,600	20,331	-	-	-	-	79,931
Cash Equivalents	-	-	-	-	-	-	-
Overdraft repayable on demand	-	-	-	-	-	-	-
Finance lease obligations	-	-	-	-	-	-	-
TOTAL	59,600	20,331	-	-	-	-	79,931