

The Haven (Stapleford)

Report and Financial Statements

**Year Ended
31st December 2024**

**Charity No: 1156295
Company No: 08900578**

*Hopewell Business Services
(Accountants)
'Doverbeck'
8 Gunthorpe Road
Lowdham
Nottingham NG14 7EN*

The Haven (Stapleford)

Reference and Administrative Information

Trustees

Russell Olding (Chair)
Peter Edmonds
Louise Brown
Frances Connor
Timothy Brindley

Charity Registration Number

1156295

Company Registration Number

8900578

Principal Office

The Haven Centre
Wadsworth Road
Stapleford
Nottingham
NG9 8BD

Bankers

HSBC UK
26 Clumber Street
Nottingham
NG1 3GA

Solicitors


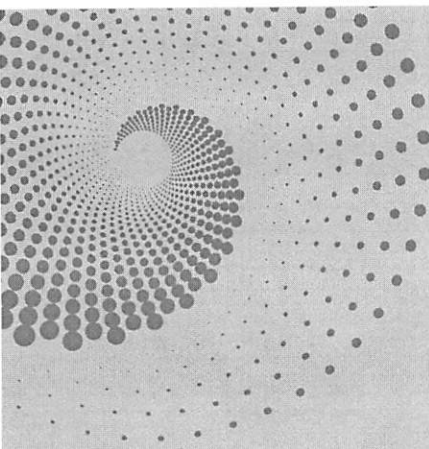
Geldards LLB
Cubo
Standard Court
Park Row
Nottingham
NG1 6GN

The Haven (Stapleford)

Contents

Page:

1 to 5	Chair of Trustees Annual Report
6 to 7	Report of the Trustees
8	Independent Examiner's Report to the Trustees
9	Balance Sheet
10	Income & Expenditure Account
11 to 13	Notes forming part of the financial statements



**2
0
2
4**

ANNUAL REPORT

Haven [Stapleford]



info@havencentre.co.uk



www.havencentre.co.uk





Introduction

The Haven Centre: A Community Pillar since 2014

The Haven [Stapleford] inaugurated the Haven Centre on Wadsworth Rd in 2014. This centre remains dedicated to serving the Stapleford community in accordance with its charitable mission.

Meeting New Challenges in 2024

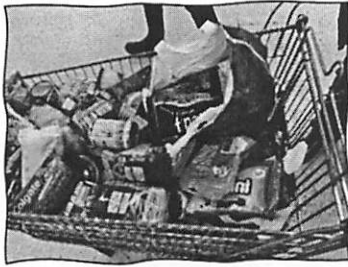
As we entered 2024, we faced new challenges. In addition to our church services and meetings, we ran over ten community-focused programmes aimed at providing support to the two most disadvantaged communities in our borough. Thanks to generous funding, we have been able to sustain our Food Bank, assisting numerous households experiencing financial difficulties. We are deeply thankful to the many volunteers who stepped up to help with food collections and deliveries.

Our Toddler group is flourishing, just like the other groups in the building. It's wonderful to witness the growth of Creative Hands Child Care, CGL, Social Souls, Beeston Players, the Men's Mental Health Group, the charity shop, and the café, all while we continue to sustain this invaluable community resource center.

We will continue to adapt and change with the trends and needs of our community.

OPERATIONS

2024 saw the continued development of our services. We have found some of the adjustments we made, regarding staffing, brought challenges, but it meant we were able to focus on building towards the future. We have some fresh faces as well as the return of familiar faces. Although our goal has been to expand and move forward, our primary focus has been on developing and strengthening our existing foundations.

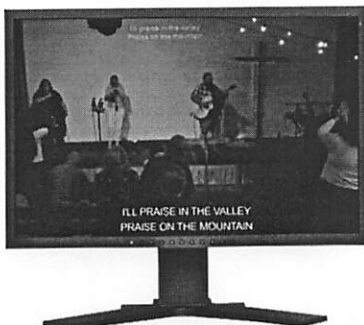


- ⑦ Food-bank continued to see an upturn in demand and, as always, the team of volunteers have served the community well this year.
- ⑦ Community Café [open oneday each week, with FREE soft play and Wi-Fi. Super Tots [stay and play group, two sessions per week]
- ⑦ CGL [an agency based in our centre supplying support and health checks for recovering addicts]
- ⑦ Social Souls - work experience for adults with learning difficulties

In addition, providing personal and spiritual support for those who seek it, and opportunities for personal development. The church continued to provide.

- ⑦ Weekly worship service
- ⑦ Weekly Bible study groups
- ⑦ Counselling & support opportunities to develop gifts & abilities.
- ⑦ Food-bank
- ⑦ Management of the centre

The heating system remains a considerable challenge since the gas boiler stopped functioning in 2020. The existing boilers are beyond economical repair. Thankfully, we have a backup immersion heater for hot water, ensuring a consistent supply. Unfortunately, Nottinghamshire County Council has not been able to provide any solutions for our heating issue. Due to the terms of our lease, we cannot pursue permanent fixes. Since September, we have relied on portable electric heaters, and additionally, we invested in a few diesel heaters to maintain room usability during the coldest months. While these measures were helpful, the winter proved to be quite challenging, significantly affecting our energy bills and the overall usability of the building. We are actively seeking solutions in collaboration with the council.



We have continued streaming our in-person Sunday services online, allowing those that are house bound or geographically distanced to join online.

We were also able to join other churches from The NG Network to have joint services.

Ongoing work and maintenance to the fixtures and fittings of the building continued. We were able to continue improving the grounds due to volunteers and the hard work of Social Souls.



The foodbank has continued to serve the community, This Christmas we gave shopping vouchers to service users to spend on meat and veg at a local shop. £500 worth of vouchers were given out. This year the Foodbank received incoming food donations through Tesco, Stapleford Baptist Church and individual donations. Also, Warburtons supplied a monthly donation of bread products. We also received financial donations which are included in our end of year accounts. We are grateful for all the support from businesses and individuals

We continued our work with Social Souls which included the social evening and also a monthly afternoon Café run by Social souls on the first Tuesday of the month. The Men's mental health group continued in partnership with the Social Prescribing team, this runs once a month on a Monday Evening.

We also were continue with selected showings of our Community Cinema with the annual showing of "The Polar Express", this is an immersive experience using lights, smoke machines, fans, and snow machines. Yet again it was a great hit and has become part of the Christmas tradition at the Haven. We are grateful to Bridge Audio for their kind support, and donation of time, expertise and equipment!



Staff



The core staff team remained solid, with one full-time and one part-time member, plus support from some sub contracted part time staff. The support and volunteer hours from Social Souls has been a great asset to the work of the centre.

All compliance challenges have been met in terms of employment law and wages/ pensions. On the job training is provided and personal development plans are in place. Levels of qualification and experience are above average. All legal requirements [hygiene and safety training etc] have been met. All staff and volunteers are DBS checked and up to date with safeguarding

procedures. Policies have been composed for all significant areas including

- ⑦ Safeguarding
- ⑦ Data Protection [GDPR]
- ⑦ Professional Boundaries
- ⑦ Social Media

In addition we have a comprehensive Staff Handbook and Code of Conduct. Copies available on request.

FINANCE

2024 has been a year of seeing some of the benefits of the changes in the budget. We were pleased that the actions taken over the previous couple of years continue to allow us to move in to a stronger position.

We remain grateful for the help from grant giving trusts and will look at strengthening our financial position in 2025. We are grateful to Broxtowe Borough Council. Our budgeting has remained strong and has carried us through. We are still operating as frugally as possible. Government guidelines for salary and pension increases have been met. Wages and bill payments are kept up to date. Assets are appropriately maintained. Cash flow was kept strong by the generous giving of church members, on top of Grants. Our Directors continue to strategise to bring us to a place of greater financial security.

DIRECTORS/TRUSTEES

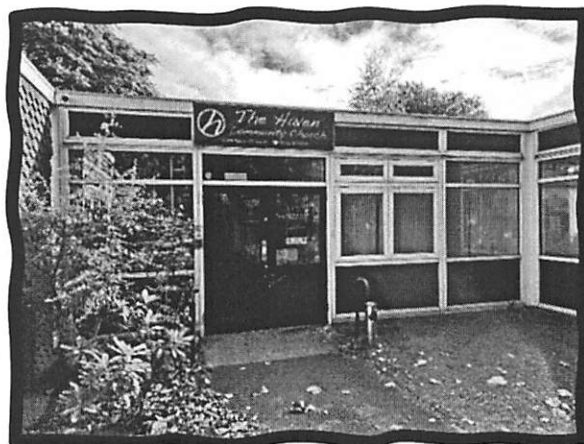
Our governing group remain consistent and stable, and Operating budgets are produced and adhered to. There have been no changes in the board, and the team continue to serve well with good robust discussions in meetings.

ORGANISATIONAL HEALTH

The church remains healthy and focused on its Mission to Serve the Community. Feed back is always positive, and we estimate that within any given week, we help/ support upwards of 200 people in this community.



Russell Olding
Senior Minister



The Haven (Stapleford)

Report of the Trustees for the year ended 31st December 2024

The Trustees present their annual report along with the unaudited financial statements of the Charity for the year ended 31st December 2024. The Trustees have adopted the provisions of the Statement of Recommended Practice (SORP) "Accounting and Reporting by Charities" (FRS102) in preparing the annual report and financial statements of the Charity.

The financial statements have been prepared in accordance with the accounting policies set out in notes to the accounts and comply with the charity's governing document, the Charities Act 2011 and Accounting and Reporting by Charities: Statement of Recommended Practice applicable to charities preparing their accounts in accordance with the Financial Reporting Standard applicable in the UK and Republic of Ireland published on 16th July 2014 (as amended by update bulletin 2 published on 5th October 2019).

Structure, Governance and Management

Governing Document

The Haven (Stapleford) was established as a charitable trust by a deed and registered with the Charity Commission on 20th March 2014. The Charity is also established as a Company Limited by Guarantee and registered with Companies House on 18th February 2014. The charity is based at The Haven Centre Wadsworth Road, Stapleford, Nottingham.

There are currently five Trustees and future Trustees shall be appointed by a resolution at a meeting of the Trustees in accordance with the Trust Deed.

The Trustees are responsible under the Charity's governing document for controlling the management and administration of the Charity.

The Trustees who served during the year are set out in the index page.

Appointment of Trustees

The chair of the Trustees is nominated by the board of Trustees. Trustees are elected by the current Trustees as required.

Trustee Induction and Training

All Trustees are briefed on their legal obligations under charity law and the decision making processes, the business plan and recent financial performance of the Charity. Trustees are encouraged to attend appropriate external training events where these will facilitate the undertaking of their role.

Organisational Structure

The Charity is principally UK based in Nottingham.

At the beginning of the year there was one full-time and one part-time employed staff members.

The Board of Trustees meet on a regular basis to discuss strategic direction and policy of the organisation.

The Haven (Stapleford)

Report of the Trustees for the year ended 31st December 2024 (Continued)

Structure, Governance and Management (continued)

Risk Management

The Trustees are developing a risk management strategy comprising of:

- * a review of the risks a charity may face;
- * the establishment of systems and procedures to mitigate those risks identified in the plan;
- * the implementation of procedures designed to minimise any potential impact on the Charity should those risks materialise; and
- * individual team trip risk assessments.

One element in the management of financial risk is the setting of a reserves policy and its regular review by Trustees.

Public Benefit Statement

The section of this report above entitled Objectives and activities sets out the aims and priorities of the Charity.

The Trustees have considered this matter, in conjunction with the guidance contained in the Charity Commission's general guidance on public benefit, and have concluded:

- * That the aims of the organisation continue to be charitable;
- * That the aims and work done give identifiable benefits to the charitable sector and both indirectly and directly to individuals in need;
- * That the benefits are for the public, are not unreasonably restricted in any way and certainly not by ability to pay;
- * That there is no detriment or harm arising from the aims and activities.

Financial Review

The overall financial position of the Charity has again improved and slightly strengthened from the previous year as the Trustees exercised tighter financial control through regular meetings. Sound financial management has continued a more positive outcome for the year with net funds of £14922 of which £7725 was Restricted. (2023: £13659 of which £9946 was Restricted) at the year end.

Principle Funding Sources

The majority of funding received by the Charity comes from individuals, room lettings, other charities and organisations in the UK

Reserves Policy

The Trustees have established a policy whereby, given the Charity's present level and nature of activities, the unrestricted funds not committed or invested in intangible and tangible fixed assets ("the free reserves") held by the Charity should not be less than three months' unrestricted expenditure.

Although the current level of unrestricted funds still falls short of this policy the Trustees are confident that with tighter budgeting controls and sound management in place this level of funds will steadily improve over the ensuing years.

Investment Policy

The Trustees have the power to invest in such assets as they see fit.

The Charity has a policy of keeping any surplus liquid funds in short term deposits (the Reserved Account) which can be readily accessed should the need arise.

Tax Status

The Haven (Stapleford) is a registered charity and is exempt from corporation tax and income tax.

**Independent Examiner's Report to
The Trustees of The Haven (Stapleford)
For the year ended 31st December 2024**

I report on the accounts of The Haven (Stapleford) for the year ended 31st December 2024

Respective responsibilities of Trustees and Examiner

The Charity's Trustees are responsible for the preparation of the accounts. The Charity's Trustees consider that an audit is not required for this year under section 144(2) of the Charities Act 2011 (the 2011 Act) and that an independent examination is needed.

It is my responsibility to:

- 1 examine the accounts under section 145 of the 2011 Act and
- 2 to follow the procedures laid down in the general directions given by the Charity Commission under section 145(5)(b) of the 2011 Act and
- 3 to state whether particular matters have come to my attention.

Basis of Independent Examiner's Report

My examination was carried out in accordance with the general directions given by the Charity Commission. An examination includes a review of the accounting records kept by the charity and a comparison of the accounts presented with those records. It also includes consideration of any unusual items or disclosures in the accounts, and seeking explanations from you as trustees concerning any such matters. The procedures undertaken do not provide all the evidence that would be required in an audit, and consequently no opinion is given as to whether the accounts present a 'true and fair view' and the report is limited to those matters set out in the statement below.

Independent Examiner's Statement

In connection with my examination, no matter has come to my attention:

(1) which gives me reasonable cause to believe that in material respect, the requirements:

- a) to keep accounting records in accordance with section 130 of the 2011 Act; and
 - b) to prepare accounts which accord with the accounting records and comply with the accounting requirements of the 2011 Act
- have not been met; or

(2) to which, in my opinion, attention should be drawn in order to enable a proper understanding of the accounts to be reached.

Clive A Hopewell
Hopewell Business Services
'Doverbeck'
8 Gunthorpe Road
Lowdham
Nottingham
NG14 7EN

5th September 2024

The Haven (Stapleford)

Balance Sheet As at 31st December 2024

	(Note)	2024	2023
Fixed Assets			
Computer Equipment		0	0
F & F & Equipment		1118	1502
Property Improvements		2065	2323
Total Fixed Assets	(4)	3183	3825
Current Assets			
Debtors	(5)	4949	4396
Cash at Bank		11974	12638
Cash - Café/Charity Shop		100	75
Total Current Assets		17023	17109
Less Liabilities			
Short Term Creditors	(6)	2321	2285
Loan Account		2963	4990
		5284	7275
Net Current Assets/(Liabilities)		11739	9834
Total Assets less Liabilities		14922	13659
Provision for Other Liabilities		0	0
Net Assets		14922	13659
Represented by;			
Unrestricted Funds		7197	3109
Unrestricted - Designated Funds	(7)	0	604
Restricted Funds	(8)	7725	9946
Total Charity Funds		<u>14922</u>	<u>13659</u>

The financial statements were approved and authorised for issue by the board on 22nd September 2025

Signed on behalf of the trustees



Rev Russell Olding
(Chair of Trustees)

The Haven (Stapleford)

Income and Expenditure Account Year ended 31st December 2024

Income		Restricted Funds	Unrestricted Funds	2024	2023
	(Note)				
Tithes & Offerings			40401	40401	40410
Tax Refunds			9105	9105	9030
Café Sales & Events			2893	2893	2996
Room Hire			50515	50515	42505
Charity Shop			2331	2331	3599
Food Bank		1843		1843	1158
Gifts Received			564	564	600
Reserve A/c Int			208	208	152
Tree Fund		2000		2000	
Total		<u>3843</u>	<u>106017</u>	<u>109860</u>	<u>100450</u>
Expenditure					
Salaries, NIC & Pensions			33003	33003	31465
Subcontract Costs	(9)		9384	9384	7963
Equipment			1193	1193	547
Repairs & Maint			1847	1847	1368
Consumables			2234	2234	2987
Ministers & Conference Exps			1483	1483	1055
Rents			3000	3000	3000
Gifts Paid			821	821	1283
Health & Safety			733	733	1969
Utilities			29846	29846	25489
General Exps & Admin	(10)		9227	9227	8086
Foodbank Exps		1838		1838	564
Insurance			3337	3337	3176
Bank & Card Charges			172	172	129
Loan Interest			102	102	152
Telephone & Internet			1272	1272	1786
IT/Software			1050	1050	1194
Outreach Events	(11)		844	844	928
Audit & Payroll Charges			1437	1437	1493
Professional Fees			249	249	260
Restricted Funds		4883		4883	0
Depreciation			642	642	3790
Total		<u>6721</u>	<u>101876</u>	<u>108597</u>	<u>98684</u>
Surplus/Deficit		<u>-2878</u>	<u>4141</u>	<u>1263</u>	<u>1766</u>

1 Accounting Policies

General information and basis of preparation

The Haven (Stapleford) is a registered charity governed by a trust deed and registered with the Charity Commission. It is also a Company Limited by Guarantee and registered with Companies House. The nature of the charity's operations and principle activities are to proclaim and further the gospel of Jesus Christ through the spoken word and resources.

The charity constitutes a public benefit entity as defined by FRS 102. The financial statements have been prepared in accordance with Accounting and Reporting by Charities: Statement of Recommended Practice applicable to charities preparing their accounts in accordance with the Financial Reporting Standard applicable in the UK and Republic of Ireland (FRS 102) issued on 16 July 2014 (as updated through update bulletin 2 published on 5 October 2019, the Financial Reporting Standard applicable in the United Kingdom and Republic of Ireland (FRS 102), the Charities Act 2011 and Generally Accepted Practice as it applies from 1 January 2015.

The charity has applied update bulletin 2 as published on 5 October 2019 and does not include a cash flow statement on the grounds that it is applying FRS 102 Section 1A.

The financial statements are prepared on a going concern basis under the historical cost convention, modified to include certain items at fair value. The financial statements are presented in sterling which is the functional currency of the charity and rounded to the nearest £.

The significant accounting policies applied in the preparation of these financial statements are set out below. These policies have been consistently applied to all years presented unless otherwise stated.

Income recognition

Income includes the total funds received during the year and comprises donations collected from individuals and those in business. Income is recognised in the period in which the charity is entitled to receipt and the amount can be measured with reasonable certainty.

Income Tax reclaimable under the Gift Aid Scheme is recognised on a receivable basis.

Volunteers and donated services and facilities

The value of services provided by volunteers is not incorporated into these financial statements.

Expenditure recognition and basis of allocation

Expenditure is included when incurred or committed for and has been shown in the Statement of Financial Activities inclusive of non-recoverable Value Added Tax.

Expenditure on operational programmes is recognised in the period in which it is incurred. Specific funds are established, which has been allocated to projects, but remains unspent at the year end.

1 Accounting Policies (continued)

Expenditure recognition and basis of allocation (continued)

The majority of costs are directly attributable to specific activities:

- a) Raising funds include all direct costs of fundraising activities.
- b) Charitable activities include expenditure associated with the running of the Charity's operations and include both the direct costs, support costs relating to those activities which also includes governance costs which are incurred in the governance of the charity and are primarily associated with constitutional and statutory requirements.
- c) Support costs include central functions and have been allocated to activity cost categories on a basis consistent with the use of resources.

Irrecoverable VAT

All resources expended are classified under activity headings that aggregate all costs related to the category. Irrecoverable VAT is charged against the category of resources expended for which it was incurred.

Foreign currencies

Transactions in foreign currencies are translated into sterling at the rate of exchange ruling at the date of transaction.

Funds structure

Funds held by the charity are:

Unrestricted & Unrestricted Designated funds - These are funds which can be used in accordance with the charitable objects at the discretion of the Trustees.

Restricted Funds - These are funds that can only be used for particular restricted purposes within the objects of the Charity. Restrictions arise when specified by the donor or when funds are raised for particular restricted purposes.

2 Employees and Trustees

The charity had two employees and two subcontracted staff during the year.

3 Taxation

The charity is exempt from corporation tax and income tax as all income is charitable and is applied for charitable purposes.

4 Schedule of Fixed Assets

	Rate	Year of Purchase	Cost	Additions	Accum Dep'n	Dep'n	NBV
PA System	25S	2003	1090		1090	0	0
Sound System	25S	2005	4814		4814	0	0
New Speakers x 2	25S	2006	999		999	0	0
Baptism Pool	25S	2006	720		720	0	0
Lighting	20S	2008	640		640	0	0
Lecturn	20S	2008	630		630	0	0
Soft Play Equipment	25S	2015	4500		4500	0	0
Digital Mixer	25S	2020	800		800	0	0
Storage Heaters	25S	2020	3209		3209	0	0
New Laptops	33.3S	2021	2171		2171	0	0
Electrical Heating	10S	2021	1484		438	146	880
Auditorium Computer	33.3S	2021	1172		1172	0	0
TV's x 1	33.3S	2021	698		698	0	0
Dishwasher	25S	2022	952		476	238	238
Quad Plant & Equip	10S	2023	2581		258	258	2085
			26440	6457	22615	642	3183

5 Debtors & Prepayments

I.Tax Claim - Gift Aid	4489
Room Hire	<u>480</u>
	4969

6 Short Term Creditors

Notts CC - Rent	250
PAYE/NI	1051
Audit/Payroll Fees	<u>1020</u>
	2321

	B/fwd 2023	Income	Expenditure	Funds Trf	C/fwd 2024
7 Designated Funds					
Missions Fund	332			-332	0
Emergency Fund	<u>325</u>			<u>-325</u>	<u>0</u>
	657			-657	0

8 Restricted Funds

	B/fwd 2023	Income	Expenditure	Funds Trf	C/fwd 2022
General Travel Fund	1479				1479
Burkina Faso - School	3600		3600		0
Broxtowe BC - Community Kitchen	3360		183		3177
Food Bank	407	1843	1838		412
Defibrillator	100		100		0
Arnold Clark Community Fund	1000		1000		0
Tree Fund		2000			2000
Missions Fund				332	332
Blessings Fund				325	325
	9946	3843	6721	657	7725

9 Subcontracting

M Olding - Admin	3410
T Olding - Bridge Audio	<u>5974</u>
	9384

10 General Expenses & Admin

P/S Adv & Publicity	1406
Refuse & Waste Charges	4267
Subs - AOG/NG Churches	1380
Copyright	712
Hospitality/Consumables	438
Ministry Gifts	680
Paypal/Ebay Exps	<u>344</u>
	9227

11 Outreach Events

Expenses	1217
Receipts	<u>373</u>
Net Costs	844