



## ANNUAL REPORT 2021 - 22



# Contents

<b>REPORT FROM THE CHAIR</b>	<b>3</b>
<b>GENERAL INFORMATION</b>	<b>4</b>
<b>OBJECTIVES OF THE CHARITY</b>	<b>6</b>
<b>REVIEW OF PROJECT ACTIVITY</b>	<b>8</b>
<b>REVIEW OF CORE ACTIVITIES</b>	<b>22</b>
<b>STAFF AND GOVERNANCE</b>	<b>27</b>
<b>FINANCIAL REPORTS</b>	<b>32</b>
<b>ANNUAL ACCOUNTS</b>	<b>34</b>

# REPORT FROM THE CHAIR

## WELCOME!

This Annual Report for 2022 charts our route out of the limitations we, and all of you reading this will have felt during the last couple of years. Reading the stories in this report you will see how some of the changes we made have proved beneficial and have become a part of our normal way of working with and reaching out to different communities.

Some of you will be reminded as you read, of autumnal afternoons cutting churchyard hay with your scythes or foraging for fungi, perhaps with the your churchyard volunteers. Others will remember recording wildflowers and grasses spotted as you walked through a burial ground as the insects criss-crossed in the shadows maybe as part of an Opening the Ark event. These special moments are hidden in the reports you read and I know from reading all the comments you have made over the years, how much you value them. The natural world has become such an important part of how we enjoy open space and make connection with each other.

As I write this, I am looking back over the work of the Beautiful Burial Ground project (BBG) which completed its final full year during the period covered by this report. It has reached so many people through the local activities and projects it has organised. One of these, the Celebrating Birmingham's Burial Grounds has demonstrated the usefulness of the recording tools and techniques it has developed for local people to use; a stunning legacy for BBG which will ensure the rich biodiversity of local sites can now be recorded on a national database.

The projects recorded in this report are entirely dependent on the invaluable contribution of our supporting members, organisations and sponsors, we are so lucky to have such a committed group of funders who see the value of our work and are prepared to underwrite our activities. A huge thank you to them and of course to the thousands of you who have participated in our activities over the past year. You have helped spread the word to your friends and families. We look forward to seeing you and many others like you actively engaged in supporting your local burial ground in 2023 and in the meantime I hope you enjoy reading this Report and remember the activities in which you took part.

With Good Wishes,

**Oliver Goode,**  
**Chair, Caring for God's Acre**  
October 2022



# GENERAL INFORMATION

## PRESIDENT

HRH The Prince of Wales

## PATRONS

Lawrence Banks CBE, DL., VMH.

Sir Roy Strong, CH

The Rt Revd Dr Alan Smith, The Bishop of St Albans

Dr George Peterken OBE

Prof Chris Baines

Prof Stefan Buczacki

Brigit Strawbridge Howard

Whilst Lawrence Banks was one of our patrons during the period of this report we are sorry that he is now deceased.

## TRUSTEES

Oliver Goode	Chair
Gillian Binks	Vice Chair
Sarah Ellison	Treasurer
Lisette Davies	Secretary
Anni Holden	
Judith Leigh	
Catherine MacCarthy	
Alex Glanville	
Simon Cooter	
Rev. David Cheshire	

During this reporting period Joe Manifold resigned from our Trustees and has been replaced by Sarah Ellison as Treasurer.

## STAFF

Harriet Carty	Director
Andrea Gilpin	Development & Communications Manager
Prue Dakin	Office Manager
Anna Wilde	Digital Manager
Alex Logan	Conservation Volunteer Manager
Georgina Sharp	Beautiful Burial Ground Community Coordinator
Liam Taylor	Beautiful Burial Ground Data Manager
Mick Clifton	Fund Raiser and Project Manager
Kirsty Stevens	Opening the Ark Project Manager
Megan Gallant	Opening the Ark Project Assistant

## BANKERS

HSBC, 6 High Street, Bishop's Castle, Shropshire, SY9 5BJ

## INDEPENDENT EXAMINER

S.E. Hardwick, Armstrong Rogers & Co., 45 Etnam Street,  
Leominster, Herefordshire, HR6 8AE

## CONTACT

11 Drover's House, The Auction Yard, Craven Arms, Shropshire SY7 9BZ

01588 673041 - [info@cfa.org.uk](mailto:info@cfa.org.uk) - [www.caringforgodsacre.org.uk](http://www.caringforgodsacre.org.uk)

Charity Registration Number 1155536.

CfGA commenced operations as a Charitable Incorporated Organisation (CIO)  
on 1st May 2014 - CIO Number CE000722.



# OBJECTIVES OF THE CHARITY

The charity's objectives are to promote, for the benefit of the public and for the advancement of education, the conservation, enhancement and interpretation of the natural and built features of burial grounds of all types and denominations.

## ACTIVITIES

- To carry out projects as they arise in the furtherance of the objectives stated above
- To encourage the public to investigate, research and record within burial grounds thus adding to the body of information and records made
- To assist those with responsibility for burial ground maintenance with advice and support
- To promote public awareness of burial ground importance and conservation
- The Trustees have complied with the duty in section 4 of the Charities Act 2006 to have due regard to guidance published by the Commission concerning public benefit.

## REVIEW OF COMMUNICATIONS

Communication developments are led by Andrea Gilpin and Anna Wilde

### WEBINARS

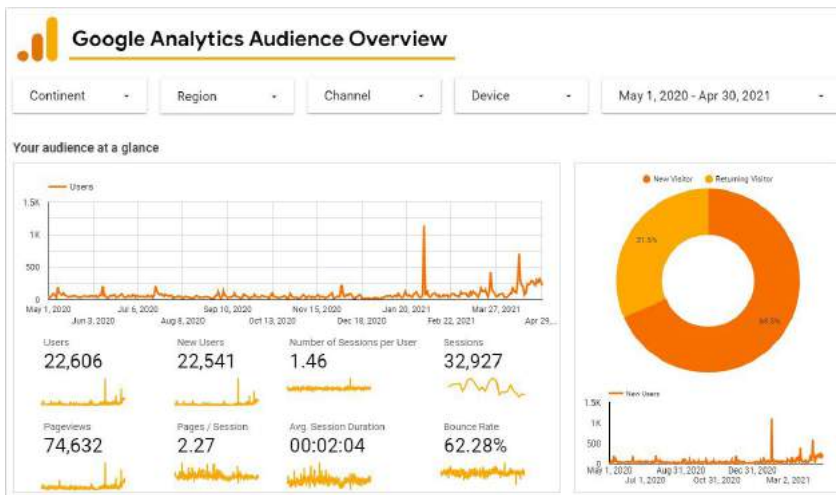
All of our project and core work relies on excellent communications and we have focused on this over the year, partly as COVID-19 meant that face-to-face meetings and activities were still curtailed. Our very popular webinar series which ran for 3 months, attracted over 650 viewers, many of whom had not heard of CfGA before. These webinars are now available in the member's only website.

### MEMBERS' ONLY WEBSITE

The separate members' site set up in 2021 continues to be regularly updated. This includes book reviews, conference videos, webinar videos and other useful and interesting exclusive content. We have had some success with getting members to engage with us via this platform and are intending to improve on this aspect going forward.

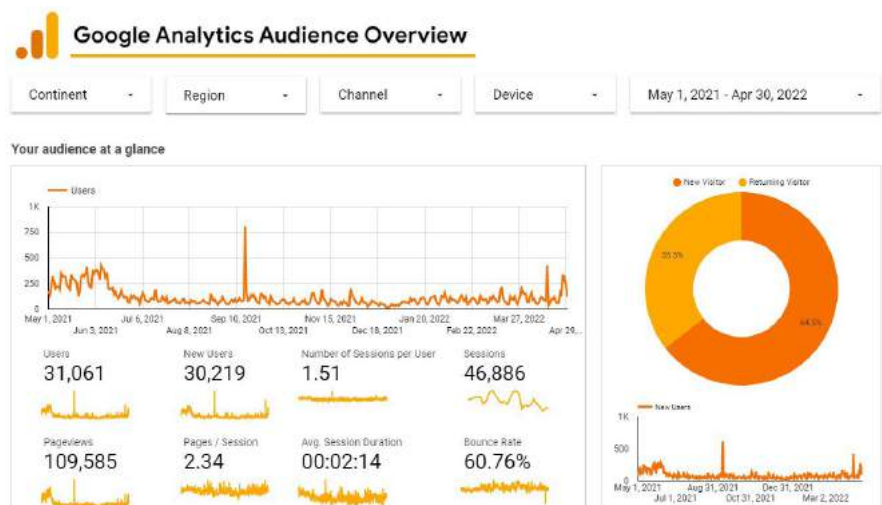
## MAIN WEBSITE

There has been an increase of **nearly 10,000 visitors to the website**, with around an **extra 30,000 pages being viewed over the year**. This is almost certainly down to the Churches Count on Nature initiative and also the conference held in March. The four top ways of accessing the site are firstly, through a Google search; secondly, through knowing and typing the web address in; thirdly, by a link from another website and lastly from social media.



Website visitors  
May 2020 - April 2021

Website visitors  
May 2021 - April 2022



## PUBLICITY & COMMUNICATIONS VIA SOCIAL MEDIA

Social media continues to send traffic to our website and we send out regular email newsletters with updates and news.

- **3,454 subscribers to our E-newsletter**
- **3,476 followers on Twitter**
- **1,294 followers on Facebook**
- **284 followers on Instagram**

# REVIEW OF PROJECT ACTIVITY

Project activity undertaken this year:

1. The Beautiful Burial Ground including Churches Count on Nature
2. Caring for God's Acre Conservation Volunteers
3. Biodiversity Hotspots in Mid Wales
4. Celebrating Birmingham's Burial Grounds
5. Welsh Burial Grounds for Wildlife
6. Opening the Ark

## 1 THE BEAUTIFUL BURIAL GROUND including Churches Count on Nature

Delivered by Harriet Carty, Georgina Sharp and Liam Taylor, supported by Prue Dakin, Andrea Gilpin, Anna Wilde and Mick Clifton

The **Beautiful Burial Ground (BBG)** project was running for the whole of this reporting period. It started in May 2018 and is scheduled to end by December 2022.

This remains our largest project, it involves two dedicated members of staff, George (4 days) and Liam (4 days), plus combined nine days per week from Prue (2 days), Andrea (1 day), Anna (1½ days) and Harriet (2½ days) and Mick (2 days). The fourth year of the Beautiful Burial Ground Project seen us bounce back from delays caused by Covid-19 and lockdowns with many events rescheduled from 2020 or 2021 as well as additional activities.

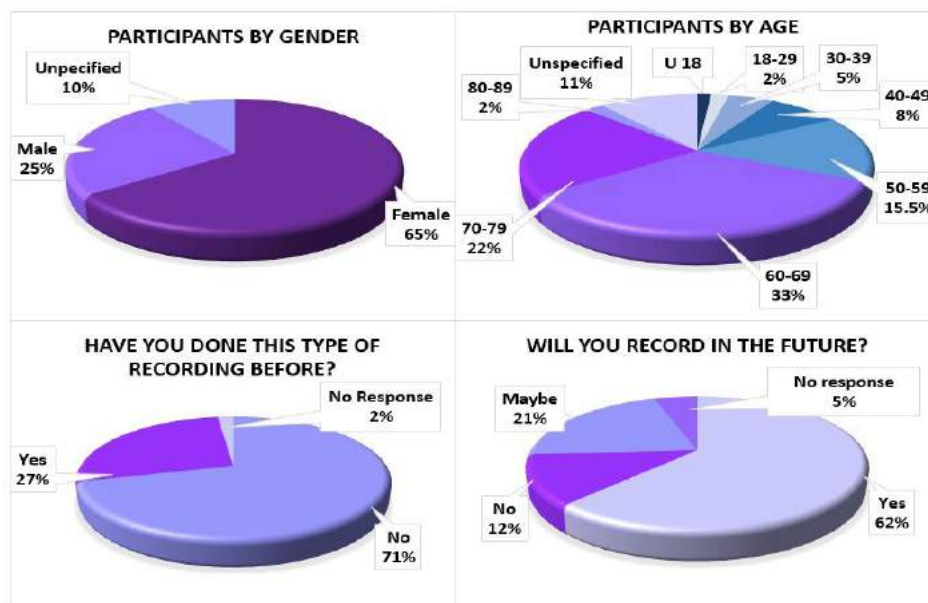
In December 2020 the National Lottery Heritage Fund granted CfGA an extension to this project, to allow us to regain time lost due to Covid-19 and lockdown. The project will now end at the close of December 2022 rather than May 2022. As many of our activities are seasonal, with most taking place in the spring and summer, this gives us an extra spring and summer season of work.



# 1 THE BEAUTIFUL BURIAL GROUND including Churches Count on Nature continued

Biological recording takes place in the main during these seasons (apart from autumn fungi) and built heritage /social history recording tends to run in warmer months as this is more pleasant for participants.

We have continued to work in partnership with the **National Biodiversity Network, the Church of England and the Church in Wales** to deliver this project and continue to build relationships with interest groups.



We have run 162 events in the project so far against a target of 124 for the whole project.

## BEAUTIFUL BURIAL GROUND CONFERENCE

We decided to hold the conference online rather than in person to make it as accessible as possible as many people were still avoiding group situations. We had a great turn out with **335 people registered**, of which 265 attended the day and more watched the recordings after the event. Our patron, Chris Baines began the conference with an inspiring talk and then 9 other talks/workshop followed. Zoom had some technical hitches but, apart from that we had a great day with positive feedback from participants.

- *Good format - lots of content. Very good conference*
- *New ideas to share with our group once I've sorted my scribbled notes*
- *I have used your resources for many years. I have also attended past conferences (in person) and get great inspiration from your work.*
- *Really diverse day so keep up the good work*

## UNDER-REPRESENTED GROUPS

We are working with three groups of people, frequently under-represented in heritage projects that we have identified as being particularly suited to our type of activity. These are **families with younger children**, **people with disabilities** and **people with mental health issues**. 48 sessions have taken place in the project so far, many facilitated by partner organisations. 828 people have been engaged with the project.



*Learning about moths with the Shropshire Disability Network, bird song with Hereford Vision Links and a family activity in Leintwardine churchyard.*

## RAISING THE PROFILE OF THE PROJECT



**901** subscribers to our 20 e-newsletters



**82** articles in partner newsletters, local newsletters and national press



**30** webinars to **1908** people



**36** Presentations to interest groups capturing **1646** people



**21,832** direct hits to BBG website pages



**3463** followers



**1,478** followers **344** posts reaching **147,318** people



Regularly updated website

## DATA MANAGEMENT



- 69,003 records have been shared with the project.
- 53,026 gathered independently, and 15,977 generated through BBG and wider CfGA activity.
- 693 recorders submitting data who have not submitted data on burial grounds into systems previously.

We have finished mapping the burial grounds of England and Wales, and now have complete coverage across England but lack cemeteries and non-conformist chapel yards in Wales.

The Beautiful Burial Ground project is funded by the National Lottery Heritage Fund, thanks to National Lottery players.

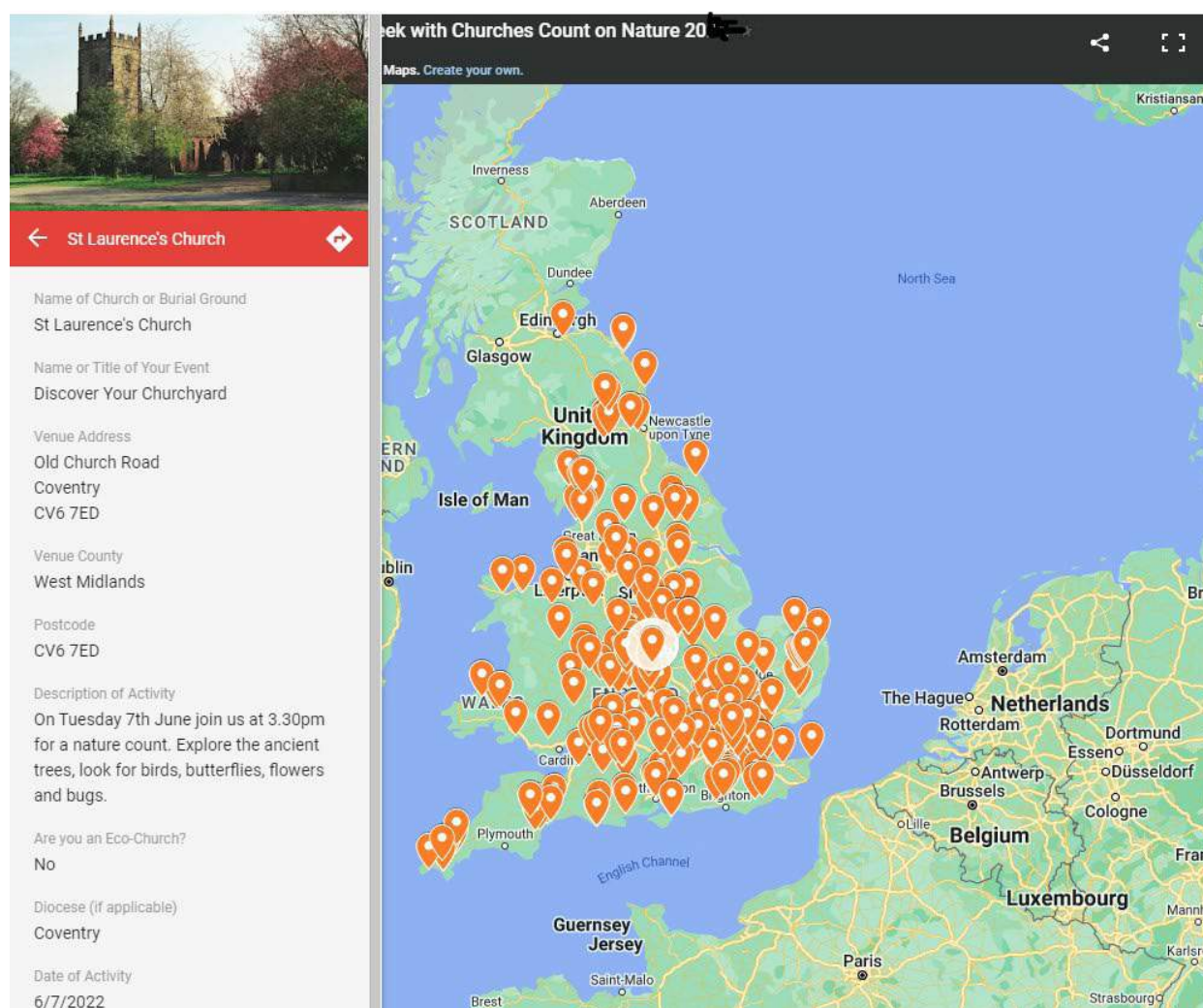




## CHURCHES COUNT ON NATURE

Delivered by Harriet Carty and Anna Wilde

This initiative is part of the BBG project and is a partnership between **Caring for God's Acre, the Church of England, the Church in Wales and A Rocha** (a Christian charity who run the Eco Church award). **Churches of all denominations** were encouraged to take part in Churches Count on Nature and **to run biological recording events**. The first event took place during **Love Your Burial Ground Week in June 2021**. This was a great success with 520 different church, chapel and cathedral groups getting involved and spotting nature within their burial grounds. In total **approximately 17,000 new biological records** were added to the Burial Ground portal within the NBN Atlas. The partnership decided to continue to run Churches Count on Nature, raising awareness during the year and encouraging participation in Love Your Burial Ground Week each June. During January, February and March of 2022 we upgraded our website to digitise registration and added to our FAQs and available resources.



Screenshot of Churches Count on Nature event map

## 2 THE CARING FOR GOD'S ACRE CONSERVATION VOLUNTEERS

Delivered by Alex Logan



This project is on-going and the team have been active now for **over a decade**. We continue to build our conservation volunteers and to seek funding for their work. There were still complications relating to the pandemic especially in the early part of the year but things settled down much more as time went by.

We managed to do 98 task days in this year with some record attendances of volunteers with up to **18 volunteers** present. This equates to 638 volunteer days or 3,190

volunteer hours. We have taken on another couple of new sites and **we now visit 44 sites regularly**. We've given advice, support or practical assistance to burial grounds in Shropshire, Herefordshire and Powys.

The support of our enthusiastic volunteers was vital in enabling this to happen and thanks go to them for their fantastic efforts and continued support. We have **74 volunteers registered** (three more than the previous year) and **40** of these come out on tasks regularly. There are usually up to **18** of our regular volunteers on a task, often joined by local people, although this was reduced to follow the varying government guidelines which were in place over the year.

### PARTNERSHIP WORKING

This year saw the CfGA Conservation Volunteers **working with several partners to deliver conservation management to as many burial grounds as possible**. Partnerships included:

- **Shrewsbury Town Council volunteers**
- **Friends of Longden Road Cemetery**
- **South Shropshire Youth Forum**
- **Friends of Cressage Churchyard**
- **Shropshire Dormouse Group**
- **Shropshire Hills Discovery Centre (Grow Cook Learn)**
- **The Environment Agency**
- **The National Trust/Natural England– Stepping Stones Project**
- **Buglife**

The volunteer team have always been interested in the biodiversity of the sites they visit and this year they continued **recording species systematically and making biological records after each task**. These records are submitted to the local record centre and to the Burial Grounds portal on the NBN Atlas.

This year we have installed twenty bat boxes and 11 bird boxes including a barn owl box that were given to us by The Environment Agency, in addition to the 36 dormouse boxes at Bromfield that have now yielded three live specimens for Shropshire Dormouse group we have volunteers making swift boxes and more dormouse boxes for other likely churchyard sites in South Shropshire.



*A volunteer scything a very good churchyard meadow in South Shropshire.*

**The volunteers collected well over three kilos of yellow rattle seed** from local meadows some of which we used to enhance our churchyard sites and some was sold, creating much needed funds for the project. Our part in the **National Trust/Natural England Stepping Stones Project** was a little reduced by the lockdowns however Alex did run **two scythe courses** for National Trust volunteers and staff as well as local smallholders, this also generated scythe sales through our CfGA shop.

We also manage **2 roundabouts in Presteigne**, introducing meadow species including oxeye daisy, red clover and yellow rattle. Alex also ran a scythe course for staff and volunteers of Buglife (a partner charity). The scythe shop, hopefully going online soon, continues to gather momentum and we continue to supply scythes locally. The Opening the Ark project has also proved an invaluable link for the volunteers as we now have local people getting more involved with us and planning to collect green hay from some sites in the summer.



### 3 BIODIVERSITY HOTSPOTS ACROSS WALES

Delivered by Andrea Gilpin and Mick Clifton

This project started on 1st October 2020 and will continue until 31st March 2023. This is the second year of a **three-year project** which is enabling and supporting managers of burial grounds to **help preserve and enhance their flower rich grassland and engage the wider community**. The project runs across the counties of **Wrexham, Flintshire, Denbighshire, Ceredigion and Powys**.

Since the 1940s over 97% of flower-rich grassland, that was once widespread in the countryside, has vanished, with burial grounds remaining one of the few strongholds of this incredibly important habitat. As a response to this we are offering a range of free services to burial ground managers across the project area which include:

- **Receive free training on a variety of topics such as grassland management, involving the community, species surveying, looking after veteran trees, writing a management brief**
- **Have a grassland survey undertaken of their burial ground**
- **Enjoy a supportive network of peer to peer support with input from specialists**
- **Have access to our new improved advice material**
- **Receive a base map of their site**
- **Receive support in writing a Management Brief for their site**
- **Receive advice on their ancient/veteran trees (our resources for this will concentrate in Wrexham, Flintshire and Denbighshire)**
- **Have their site showcased as a best practice site or case studies for others to be inspired by and learn from.**

**We now have over 50 burial grounds registered with the scheme** and will be commencing grassland surveys of these burial grounds and cemeteries in the Spring of 2022. This will enable us to work with volunteer burial ground managers to develop management plans for specific sites.



**Biodiversity Hotspots across Wales is funded by the Welsh Government via Natural Resources Wales.**

## 4 CELEBRATING BIRMINGHAM'S BURIAL GROUNDS

Delivered by George Sharp, Harriet Carty and Anna Wilde

This project started in December 2019 and will continue until December 2022. This project is primarily concerned with **social history** and it takes place within 5 burial grounds in Birmingham, which are:

- **St Mary's Churchyard, Handsworth**
- **Brandwood End Cemetery**
- **Key Hill Cemetery**
- **Warstone Lane Cemetery**
- **St Barnabas Churchyard, Erdington**

Local people are encouraged to **discover the interesting social history** to be explored in these burial grounds which were chosen by Birmingham City Council bereavement staff, focusing on sites **representing particularly multi-cultural communities**. The sites were mapped using a mapping and recording system called the Burial Ground Management System which has been created by Atlantic Geomatics, a private company. The system allows users to interrogate data, searching for specific names, dates or other parameters. Once full of monument records, this will be **invaluable for local history research** and will be stored within the Birmingham Archive.

Over the year we have run 21 sessions for the project totalling 465 volunteer hours from participants. The majority of these sessions have been collecting the details of the memorials in the burial grounds. We have also run indoor sessions where volunteers learnt to add the collected details and photographs on to the digital maps. When covid levels began to rise again, rather than meet in small spaces indoors, volunteers took packs of records home to continue to add them to the maps. Several volunteers have added hundreds of records in this way.

Volunteers are at the heart of this project and so many people have given a great deal of their time to participating in the sessions we run.



## 4 CELEBRATING BIRMINGHAM'S BURIAL GROUNDS continued

We also have volunteers who are independently recording and photographing and, in some cases, then adding those details to the map with family members and around their other commitments. We are grateful to all of those who have chosen to give their time to the project.

**St Barnabas Churchyard in Erdington** has had all its memorials recorded and photographed and added to the map thanks to the efforts of two people from the Erdington Historical Society. There is a wider churchyard project here to try and make the churchyard a safer and more pleasant place to spend time. Through the project we are supporting the church in making these changes and are actively supporting the church team in **setting up a Friends group** and moving their churchyard initiative forward.

In the **Jewellery Quarter Cemeteries**, we have been recording memorials throughout the warmer months of the year and have started on the second cemetery, Key Hill. It looks possible that we will fully record one of these cemeteries during the life of this project. In May 2021 we ran a dawn chorus event and invited people to join us at 5:30 am to listen to the birds before the city woke.

Josie Wall, Birmingham based heritage expert, is working freelance on the project delivering sessions and developing a research guide.

The Friends Group at Brandwood End Cemetery are keen, key partners and with their support we have run monthly sessions in this huge cemetery. We ran a session as part of the Friends Heritage Week programme and Lukas Large, local fungi expert led a fungi walk for the project in October.

In St Mary's Churchyard, Handsworth we have taken a slightly different approach. The churchyard was surveyed in detail in the 1980s by the Handsworth Local History Society and so we have taken a copy of the extensive survey and are checking what is now present in the churchyard against this and then adding the details to the map. It has taken a while to build up a group of volunteers here but we are making steady progress.



## 4 CELEBRATING BIRMINGHAM'S BURIAL GROUNDS continued

In November 2021 we ran an afternoon of talks in central Birmingham around burial grounds and why their heritage should be recorded. Speakers were Harold Mytum, Josie Wall and Colin Venn, unfortunately rising Covid cases, chaos on the trains and the assumption that this was an online event hampered our attending numbers but we were able to film the talks to share them to those who couldn't attend.

**Celebrating Birmingham's Burial Grounds is funded by the National Heritage Lottery Fund, Historic England and the Garfield Weston Foundation.**



Funded by  
Historic England



## 5 WELSH BURIAL GROUNDS FOR WILDLIFE

**Delivered by Mick Clifton and Harriet Carty**

This project started in November 2019 and will continue until December 2022.

The project will build on the work done by the Beautiful Burial Ground, taking the raw, biodiversity information that is being generated by this project and using it to **influence management**. Whilst most of the project will be Wales based, some aspects span Wales and England.

Over the lifetime of the project, we will:

- **Create a bespoke IT system which links the Burial Grounds Portal on the NBN Atlas with both the Church Heritage Cymru and the Church Heritage Record which are built heritage systems used in planning change in churches and burial grounds. This will summarise the key biodiversity information that is needed by managers**
- **Produce toolkits and minifilms on topics of interest to burial ground managers such as Veteran Trees, Interpretation and Meadow Management**



## 5 WELSH BURIAL GROUNDS FOR WILDLIFE continued

- Identify the most important Welsh burial grounds for wildlife (using the Burial Ground Portal) and contact the people who are managing these sites, offering advice and resources
- Raise the profile of the charity and increase membership, including improving our systems for distance working
- Create a network of excellent sites across England and Wales which can give inspiration and peer-to-peer support. 'Badge' participating sites as Burial Grounds to Inspire and supply resources including publicity material.

So far we have made a good start and are **close to creating the bespoke IT system** linking the Burial Grounds Portal with the two Church Heritage systems. **Wales is now mapped and visible within the Burial Grounds Portal** and we are encouraging recorders to visit sites and submit records. Membership continues to grow and stands currently at 235. We have developed a system for selecting the **'excellent' sites across England and Wales** and have been contacting churchwardens or other site managers of the chosen sites.

We have **52 sites up on the webpage** with **23 more in the pipeline** awaiting full information from the site managers.



Screenshot from CfGA website showing a page from Burial Grounds to Inspire section

As the Summary Field is not yet complete on the Church Heritage Record and Church Heritage Cymru we are looking at other ways to identify the most important sites for wildlife.

Welsh Burial Grounds for Wildlife is funded by the Prince of Wales's Charitable Fund.



**THE PRINCE OF WALES'S  
CHARITABLE FUND**

## 7 OPENING THE ARK

This project started on 1st November 2021 and will continue until 31st March 2023.

The project, which focuses on 26 churchyards across the Shropshire Hills AONB area aims to engage local communities with the biodiversity to be found in their local churchyard.

Opening the Ark will plan, organise, manage and deliver a programme of activities and public facing events with a specific focus on nature-based volunteer involvement and participation which will go towards reversing the trend of habitat loss and species decline.

Opening the Ark project activities will include:

- Working with a wide range of volunteers to improve the biodiversity within burial grounds and to radiate that biodiversity out to the wider community
- Providing education opportunities for children and for adults alike
- Organising a number of public talks and awareness events
- Planning up to 8 nature discovery days at burial ground hubs featuring environmental art, bug hunts, nature walks and other activities which celebrate nature in our community
- Providing a programme of heritage based conservation tasks for volunteers
- Assisting burial ground managers to produce a Management Plan for their site
- Working with a community group – Going Wild in Bishops Castle – to enhance a range of public sites including school grounds and the old castle site as well as encouraging private individuals to improve their own gardens for wildlife

The majority of work to date has been spent on site familiarisation, building contacts and approaching the various Parochial Church Councils to inform them of the project and ask whether they would like to be involved.

We have also been publicising the project via contact with partner organisations and through our new Opening the Ark Facebook page.

We have organised 7 of the Love Your Burial Ground community engagement days which will take place over the summer and autumn at the following sites: Bromfield, Hope Bagot, Clun, Norbury, Clungunford,



## 7 OPENING THE ARK continued

Bishop's Castle and Buildwas. These sites were chosen to ensure a wide geographical spread across the project area in order to engage as many different communities as possible. Specialists have been booked to run family-friendly activities around the subjects of dormice, swifts, invertebrates, wildflowers and more, with a focus on meaningful, hands-on activity.

A community involvement event is also scheduled for St Leonard's in Ludlow, but this will be a more focused, training session due to the nature of the site.

We have also approached all schools within walking distance of the 26 sites to see whether they might be interested in some wildlife inspired education sessions, either within their school grounds or at the churchyard. We have had an enthusiastic response to this and expect to be working with pupils across the project area.



# REVIEW OF CORE ACTIVITIES

Delivered by Andrea Gilpin and Harriet Carty with office support from Prue Dakin and Anna Wilde.

1. Support local communities, groups and individuals who manage burial grounds
2. Charity and project development plus general fundraising
3. General management of the charity, its staff, governance, office
4. Organising Love Your Burial Ground Week
5. Supporting and increasing membership including Diocesan Membership
6. Responding to the Covid-19 pandemic

## 1 SUPPORT LOCAL COMMUNITIES, GROUPS & INDIVIDUALS WHO MANAGE BURIAL GROUNDS

We offer support and guidance to anybody involved in managing a burial ground. We encourage them to consider the full range of features within their site; biodiversity, built heritage and social history plus the opportunities to involve their local communities and inform their visitors. We advocate investigation, recording and research within burial grounds, to increase the body of knowledge about these fascinating places.

This is achieved through a combination of phone calls, emails, public speaking and visits, and through the provision of resources including written material, video, website content and social media. This year we added virtual visits to our methods of reaching and supporting burial ground managers.

CfGA also supports burial ground managers through the resources that we provide: our Action Pack, Education Pack, Field Studies Council Fold-out Chart, Botanical Companion, Beautiful Burial Ground DVD and Starter Guide. All of these are available to download and/or buy via our website. The Starter Guide is currently sent out in hard copy to anybody who requests it as part of the BBG project. In addition, we now have 14 mini-films available on our website.

## 2 CHARITY & PROJECT DEVELOPMENT PLUS GENERAL FUNDRAISING

During this year, focus has been on continuing the delivery of the Beautiful Burial Ground project plus **building resources via grant applications** and increasing the income raised by staff through management planning and paid practical work for our volunteer manager. We have been building projects which were submitted during this financial year or shortly afterwards by Mick Clifton our Fund Raiser.

These include:

**Our Digital Ancestors:** over the next 7 years the Church of England is working with Atlantic Geomatics to map all Church of England burial grounds. These maps are useful for church wardens and incumbents and also anybody interested in social history or family history. Atlantic Geomatics has received commercial funding to carry this out, but there are no funds for training, awareness raising or celebration of this amazing endeavour. CfGA has applied for funding to run a training project in parallel to the mapping work so that these maps can be used by local communities. If successful this will start in autumn 2022.

**Churchyard Carbon analysis:** working in partnership with the Church of England and the UK Centre for Ecology & Hydrology (UKCEH) we are investigating the Carbon stored within churchyards. This includes the vegetation cover such as trees and shrubs and also the carbon within churchyard soils. During 2021, UKCEH carried out a desktop analysis using existing data from the Church Heritage Record mapping of burial grounds and their own habitat mapping work. The conclusion from this was that further analysis was needed as burial grounds could well be exceptional in terms of Carbon storage and the current data does not include any burial grounds. Working in partnership we devised a methodology for soil sampling which was trialled once by CfGA staff. This will be rolled out further over the next 6 to 9 months.

**Small grants for our Conservation Volunteers and other aspects of our work:** numerous applications have been made to other trusts and agencies, and our successful applications were:

- **Green Recovery Challenge Fund £120,700**
- **Marsh Christian Trust £500**

### 3 GENERAL MANAGEMENT OF THE CHARITY

Core staff are charged with management of the charity including:

- **Managing the finances of the charity to ensure best value for all expenditure**
- **Maintaining and improving office systems to maximise effectiveness of human resources**
- **Reducing our carbon footprint and increasing sustainability**
- **Following CfGA policies and updating and checking those policies**
- **Organising meetings and reporting to trustees to allow robust governance**
- **Keeping up to date with changes in charity policies and systems.**
- **Organising the AGM which took place digitally**

### 4 ORGANISING LOVE YOUR BURIAL GROUND WEEK

This national event takes place in the second week of June, spanning two weekends. People are encouraged to **run an event of their choice to encourage the public to visit their burial ground**, learn something about it and have an enjoyable time. Events are logged on the CfGA website. During 2021 there were 520 events during Love Your Burial Ground Week.

### 5 SUPPORTING & INCREASING MEMBERSHIP INCLUDING DIOCESAN MEMBERSHIP, INDIVIDUAL AND GROUP MEMBERSHIP

During 2021/2022 we have developed a membership forum, where members can log on, browse specific resources such as the recordings of our webinars and conference talks, and download past copies of our magazine, The Lychgate. They can chat with each other and book monthly 'surgeries' asking staff for bespoke advice. This is live now and open to all with a valid membership, including diocesan members.

The membership of CfGA stood at **223 individual, couples or group members** at the end of April 2022, excluding honorary members, Trustees and Patrons.



## 5 SUPPORTING & INCREASING MEMBERSHIP continued

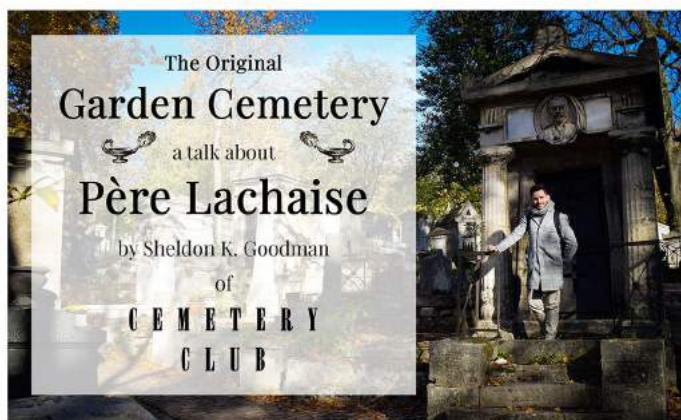


Two editions of the members' newsletter, **The Lychgate** were produced and distributed.

This year we ran a virtual AGM on Zoom, where the speaker was Sheldon K Goodman from the Cemetery Club, whose talk on the Père Lachaise cemetery was informative and enjoyable. **114 people attended the online AGM**, nearly double the previous year.



**Carling for God's Acre invites you to their online Annual General Meeting**



**Followed by a talk on the Père Lachaise Cemetery by Sheldon K. Goodman of Cemetery Club**

**Tuesday  
9th November 2021  
from 7pm,  
booking essential**

Invitation to 2021 AGM

## DIOCESAN MEMBERSHIP WITH LICHFIELD DIOCESE

We have a rolling membership with the [Lichfield Diocese](#) through which CfGA supply a range of services including [advice, support, communications and our printed resources](#). The Lichfield Diocese commit to monthly financial support of the charity.

We have:

- [Produced a monthly article for the Bishop's Letter](#)
- [Taken on the role of Environmental Adviser to the diocese, fielding enquiries on environmental matters](#)
- [Publicised Lichfield activity and key messages that fit with CfGA aims if requested to do so](#)
- [Become a member of the Lichfield diocese Land & Biodiversity Group](#)
- [Offered a reduction on printed material and individual membership](#)

## DIOCESAN MEMBERSHIP WITH HEREFORD DIOCESE

Hereford Diocese initiated a rolling membership following an evening of talks and discussion where Harriet was the main speaker. This started in March 2022 and involves:

- [A monthly article for newsletters](#)
- [Taking on the role of Environmental Adviser to the diocese, fielding enquiries on environmental matters](#)
- [Publicising Hereford activity and key messages that fit with CfGA aims if requested to do so](#)
- [Offering a reduction on printed material and individual membership](#)

## 6 RESPONDING TO THE COVID-19 PANDEMIC

Much of our work has returned to a new normal in 2021/2022. We continue to use our improved [distance working systems and protocols for staff, volunteers and those attending our events and activities](#). We kept up to date with advice from a variety of sources including government websites, ACAS website and the Small Charities Coalition. [The Finance and Risk Committee](#) gave governance to the decision-making taking place which needed to react to rapidly changing conditions. We are now using our office again with most staff coming in one or two days a week and working from home or out on site for the remainder of their working week.



# STAFF AND GOVERNANCE

## TRUSTEES

The Trustees who held office during the financial year and at the date of this report are:

<b>Oliver Goode</b>	<b>Chair</b>
<b>Gillian Binks</b>	<b>Vice Chair</b>
<b>Joe Manifold &amp; Sarah Ellison</b>	<b>Treasurer</b>
<b>Lisette Davies</b>	<b>Secretary</b>
<b>Anni Holden</b>	
<b>Judith Leigh</b>	
<b>Catherine MacCarthy</b>	
<b>Alex Glanville</b>	
<b>Simon Cooter</b>	
<b>Revd David Primrose</b>	

Our treasurer Joe Manifold resigned at our AGM in November 2021. He was replaced by Sarah Ellison. Sarah works for Enterprise House, a social enterprise offering support to individuals, businesses and community groups as well as charities. Sarah is able to deliver our governance needs via their Enterprise Initiative programme.

New trustees are recruited as needed, either by appointment at the AGM or by co-option. In 2015 we carried out an initial skills audit of trustees which is updated annually. New trustees are recruited as needed and we have invited Revd David Primrose to join the trustees in June 2021. The charity is governed by its constitution.

## TRUSTEE RECRUITMENT

The CfGA Director or existing trustees suggest potential new trustees and identify the skills and experience which they would bring to the group. This is then considered by the Director and Chair of Trustees, assessing whether the new individual will fit with the existing skills of the trustees and whether a balance is being maintained regarding skills and experience and the objectives of the charity.

## TRUSTEE RECRUITMENT continued

If the potential new trustee is deemed to be suitable then either the Director or Chair of Trustees will approach them to see if they will be willing to stand and the other Trustees are informed of this by email or post. If interested, the individual is invited to the next Trustees meeting to learn more about the charity and the role of Trustees. They are then invited to join.

New Trustees meet with the Director prior to their first Trustees meeting, who explains the work and objectives of the charity. They are given a full set of our publications and also a copy of the Roles of Trustees and generic guidelines on being a Trustee from the Charity Commission. One individual joined the Trustees during this financial year; this is Revd David Primrose who brings with him a great deal of experience in community engagement and cohesion as well as working within a diocese.

**The Trustees have assessed the major risks to which the charity is exposed, in particular those related to its operations and finances, and are satisfied that systems are in place to minimise exposure to those risks.**

## GOVERNANCE ACTIVITY

During the year trustees held four trustees' meetings in June, September, December and March. Our **Finance & Risk Committee** meets a few weeks in advance of each of these meetings and then reports to full Trustees. Trustees are also sent the minutes of the Finance & Risk Committee meetings. Two of these meetings took place digitally, on Microsoft Teams. Our December and March meetings were hybrids, with several trustees there in person and others on Teams.

The Finance and Risk Committee oversees the **management of the finance**, monitoring expenditure against budget over the financial year. This includes the **preparation of the charity's annual accounts** and the routine financial management. This committee also considers the **risks to the charity** and the **projects being delivered by the charity**. The risk log is considered and updated at each meeting. The Finance and Risk Committee were also consulted regarding **changes to working practices** brought about by COVID-19 and the decisions regarding returning to the office. These included plans, risk assessment and protocols for returning to the office and restarting our volunteer group.

## GOVERNANCE ACTIVITY continued

This committee reports to the **full board of Trustees** which is responsible for approval of the budget and the **annual accounts**. This committee met four times this year.

**Members: Oliver Goode, Sarah Ellison, Alex Glanville. Also attending: Harriet Carty, Prue Dakin and Anna Wilde.**

2021/2022 marked the development of the new **Business Plan**. A draft plan was circulated prior to our March meeting where it was discussed. During this meeting we decided to have another **facilitated Trustees meeting** in June 2022, led by Revd Mark Betson the National Rural Officer for the Church of England. Once the Business Plan is completed we will set up a new Start and Finish Group.

The **Project Champions** meet or speak to the member of staff responsible for a project prior to the full board of Trustees' meetings. They then **present the report** written by staff on their particular project and **add their views and information**. They take a lead in the governance of the projects for which they are champion.

- **The Beautiful Burial Ground champion is Catherine McCarthy**
- **Biodiversity Hotspots in Mid Wales champion is Alex Glanville**
- **Welsh Burial Grounds for Wildlife champion is Alex Glanville**
- **The CfGA Conservation Volunteers champion is Anni Holden**
- **Celebrating Birmingham's Burial Grounds champion is Judith Leigh**

Governance and support for the Director is given via the full board of Trustees and also through quarterly informal meetings between the **Chair of Trustees Oliver Goode** and the **Director Harriet Carty**.

We have a **Steering Group for the Beautiful Burial Ground** project in delivery, which did not meet during this reporting period. This group includes experts in **ecology, built heritage, recording systems** as well as the **Church of England, Church in Wales** plus four of our Trustees.

**Members: Lisa Chilton (NBN), Jenifer White (Historic England), Catherine Ross (CofE), James Miles (CofE), Tina Andrews (CinW), Charlie Bell (Stepping Stones), Caroline Uff (independent), Dan Wrench (Shropshire Council), Judith Leigh, Gill Binks, Oliver Goode, Catherine MacCarthy (trustees).**

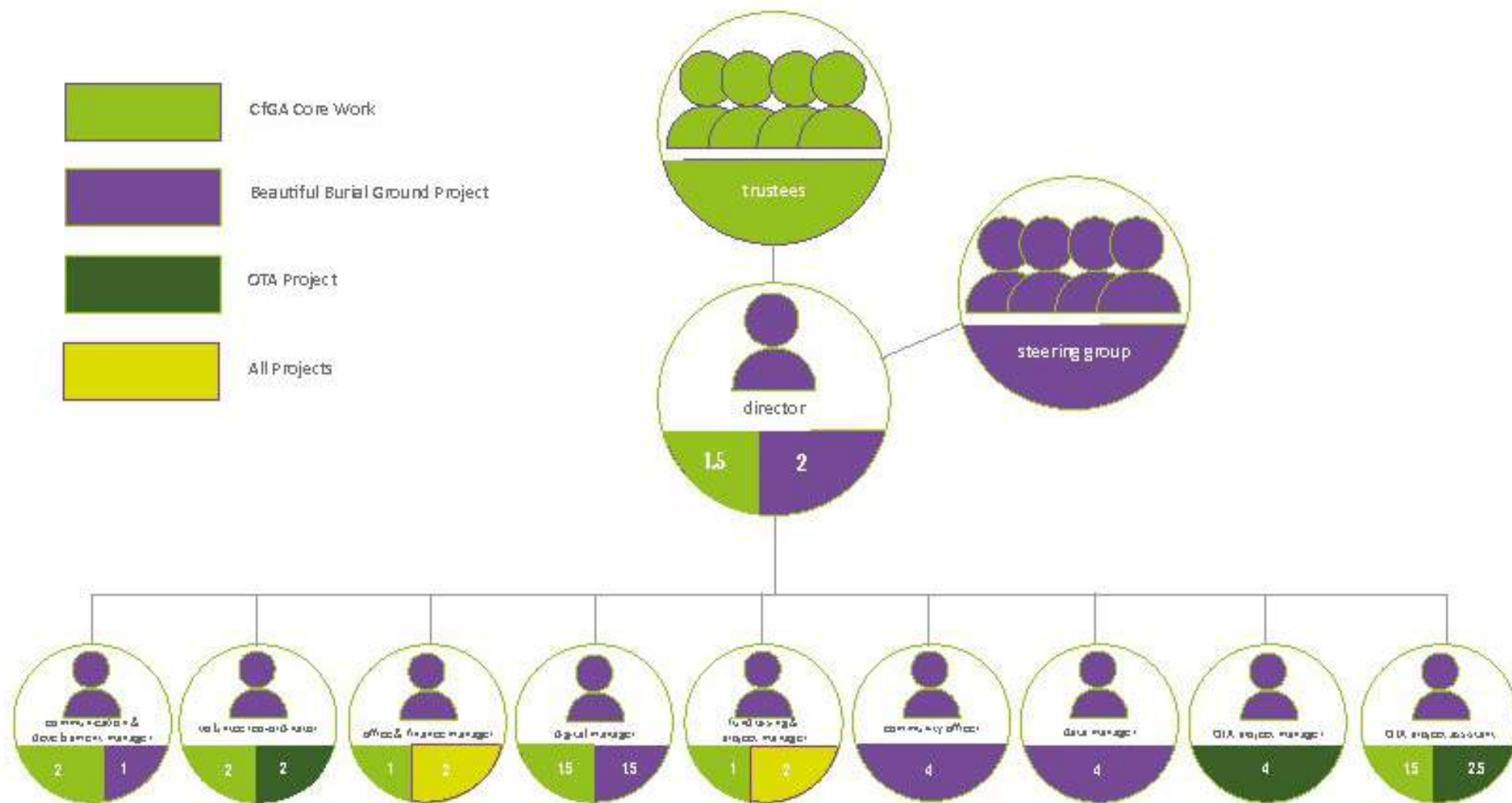
## STAFF

During this reporting period we have retained all of our staff:

Harriet Carty	Director, 3.5 days per week
Andrea Gilpin	Communications & Development Manager, 3 days per week
Prue Dakin	Office Manager, 3 days per week
Anna Wilde	Digital Manager, 3 days per week
Mick Clifton	Fund Raiser and Project Manager, 3 days per week
Alex Logan	Volunteer Coordinator, 4 days per week
George Sharp	Beautiful Burial Ground Community Coordinator, 4 days per week
Liam Taylor	Beautiful Burial Ground Data Manager, 4 days per week

In November 2021 we successfully recruited for our new project Opening the Ark, adding 2 new members of staff:

Kirsty Stevens	Opening the Ark Project Manager, 4 days per week
Megan Gallant	Opening the Ark Project Assistant, 4 days per week



# Caring for God's Acre Organisational Chart

at April 30th 2022

# FINANCIAL REPORTS

## RESERVES POLICY

The Trustees believe that the Charity should hold financial reserves because:

- **It is promoted as best practice by the Charity Commission**
- **It has no endowment funding for its various projects and is dependent upon income from donor funding, which is inevitably subject to fluctuation.**
- **It requires protection against and the ability to continue operating in the event of any possible future damaging events**

The Trustees believe that the minimum level of balance on reserves should be the equivalent of at least three months operating costs for the Charity as a whole. This will be calculated, reviewed and approved annually. The reserves should be built up to the desired level in stages consistent with the Charity's overall financial position and its need to maintain and develop its objectives. Based on the latest financial statements, three months operating costs amount to approximately £60,000 and this is covered by the reserves held.

## TREASURER'S REPORT FOR THE FINANCIAL YEAR 1ST MAY 2021 – 30TH APRIL 2022

This year's accounts show a surplus which is reduced from the previous year because of the ending of the furlough scheme.

Income for the year was £268,220 and expenditure was £250,655, giving a surplus of income over expenditure of £17,565.

The Trustees and staff are very aware that the main funded project The Beautiful Burial Ground will be coming to an end in December 2022, along with various other small projects. The Trustees will be looking intensively at future funding and staffing plans in the run up to these projects coming to an end with budget forecasts being prepared for various eventualities.



**We are grateful for the support we have received, and particular mention should be made of:**

- **National Lottery Heritage Fund**
- **Natural Resources Wales and Welsh Government**
- **Prince of Wales's Charitable Fund**
- **Historic England**
- **The Millichope Foundation**
- **GML Ltd**
- **Bishop's Castle Town Council**
- **Southall Trust**
- **Patsy Wood Trust**
- **Groundwork UK**
- **Leonard Laity Stoate Charitable Trust**

Following Joe Manifold's resignation at the AGM in November 2021 I have taken on the role of Treasurer through the Enterprise Initiative project based at Enterprise House in Bishop's Castle. I would like to thank Joe for his generous help with the handover.

I am enjoying the role and working with Prue and the Trustees and finding out about the many strands of work the charity undertakes.

**Sarah Ellison**

# ANNUAL ACCOUNTS

## CARING FOR GOD'S ACRE

### INDEPENDENT EXAMINERS' REPORT TO THE TRUSTEES OF CARING FOR GOD'S ACRE

I report on the Accounts of the Charities for the year ended 30 April 2022, which are set out on pages 3 to 19.

#### RESPECTIVE RESPONSIBILITIES OF TRUSTEES AND INDEPENDENT EXAMINER

The Charities' Trustees are responsible for the preparation of Accounts. The Charities' Trustees consider that an audit is not required for this year under Section 144 of the Charities Act 2011 (the Charities Act) and that an independent examination is needed.

It is my responsibility to:-

- examine the Accounts under Section 145 of the Charities' Act,
- to follow the procedures laid down in the General Directions given by the Charity Commission (under Section 145(5)(b) of the Charities Act), and
- to state whether particular matters have come to my attention.

#### BASIS OF INDEPENDENT EXAMINERS' REPORT

My examination was carried out in accordance with the General Directions given by the Charity Commissioners. An examination includes a review of the accounting records kept by the Charities and a comparison of the Accounts presented with those records. It also includes consideration of any unusual items or disclosure in the Accounts, and seeking explanations from you as Trustees concerning any such matters. The procedures undertaken do not provide all evidence that would be required in an audit, and consequently no opinion is given as to whether the Accounts present a 'true and fair' view and the report is limited to those matters set out in the statement below.

#### INDEPENDENT EXAMINERS' STATEMENT

In connection with my examination, no matter has come to my attention: -

(1) which gives me reasonable cause to believe that in any material respect the requirements

- to keep accounting records in accordance with Section 130 of the Charities Act; and
- to prepare Accounts which accord with the accounting records and to comply with the accounting requirements of the Charities Act;

have not been met; or

(2) to which, in my opinion, attention should be drawn in order to enable a proper understanding of the Accounts to be reached.

**S. E Hardwick**  
**Accountant**

45 Etnam Street  
Leominster  
Herefordshire  
HR6 8AE

# **CARING FOR GOD'S ACRE**

## **STATEMENT OF ACCOUNTING POLICIES YEAR ENDED 30 APRIL 2022**

The Financial Statements have been prepared under the historical cost convention as modified by the revaluation of investments and in accordance with the Statement of Recommended Practice, Accounting by Charities.

### **INCOMING RESOURCES**

All incoming resources are recognised when the charity becomes entitled to them, virtually certain of receipt and the amount can be measured with sufficient reliability.

Investment income is recorded when receivable.

### **RESOURCES EXPENDED**

Expenditure is included in the accounts on an accruals basis. Irrecoverable VAT is charged to the Statement of Financial Activities as incurred.

### **FUND ACCOUNTING**

General funds are unrestricted funds which are available for use at the discretion of the Trustees in furtherance of the general objectives of the Charity and which have not been designated for other purposes.

Designated funds are unrestricted funds set aside at the discretion of the trustees for specific purposes.

Restricted funds are those donated for use in a particular area or for a specific purpose, the use of which is restricted to that area or purpose.

### **TANGIBLE FIXED ASSETS AND DEPRECIATION**

Tangible fixed assets are stated at cost less depreciation. Where tangible assets have been donated they are stated at their market value at the date of the donation.

Depreciation is provided at rates calculated to write off the cost of the fixed assets, less their estimated residual value, over their expected useful lives on the following basis:

Equipment	15%	Reducing Balance Basis
Computer Equipment	33%	Reducing Balance Basis
Website	3 Years	Straight Line Basis

### **INVESTMENTS**

These are stated at the market value at the Balance Sheet date. Realised and unrealised gains and losses on investments are taken to the Income and Expenditure Account.

# CARING FOR GOD'S ACRE

## STATEMENT OF FINANCIAL ACTIVITIES YEAR ENDED 30 APRIL 2022

	Notes	Un- Restricted Funds £	Restricted Funds £	Total Funds 2022 £	Total Funds 2021 £
<b>Income and Endowments</b>					
Grants and Donations		21,941	201,175	223,116	188,832
<b>Other Income:</b>					
Investment Income		46	-	46	36
Other Income		6,337	-	6,337	2,137
Members Subscriptions		5,821	-	5,821	4,148
<b>Charitable Activities</b>					
Operational Programmes		26,923	5,977	32,900	32,549
<b>Total Income</b>		<b>£61,068</b>	<b>£207,152</b>	<b>£268,220</b>	<b>£227,702</b>
<b>Expenditure:</b>					
<b>Expenditure on Charitable Activities</b>	7	29,421	178,482	207,903	160,458
<b>Support Costs</b>	8	5,287	37,465	42,752	29,483
<b>Total Expenditure</b>		<b>£34,708</b>	<b>£215,947</b>	<b>£250,655</b>	<b>£189,941</b>
<b>Net Income before Gains on Investments</b>		26,360	(8,795)	17,565	37,761
<b>Gains on Investment Assets</b>					
Realised		-	-	-	-
Unrealised		-	-	-	-
<b>Transfers between Funds</b>		-	-	-	-
<b>NET MOVEMENT IN FUNDS</b>		26,360	(8,795)	17,565	37,761
<b>TOTAL FUNDS BROUGHT FORWARD</b>		113,297	37,170	150,467	£112,706
<b>TOTAL FUNDS CARRIED FORWARD</b>	9	<b>£139,657</b>	<b>£28,375</b>	<b>£168,032</b>	<b>£150,467</b>

The Accounting Policies and Notes on pages 14 and 17 to 19 form an integral part of these Accounts.



# CARING FOR GOD'S ACRE

## BALANCE SHEET 30 APRIL 2022

	NOTES	2022		2021	
		£	£	£	£
<b>FIXED ASSETS</b>					
Tangible Assets	1		11,647		6,713
			<u>11,647</u>		<u>6,713</u>
<b>CURRENT ASSETS</b>					
Debtors	2	62,276		15,110	
Cash at Bank and In Hand		162,676		133,020	
		<u>224,952</u>		<u>148,130</u>	
<b>CREDITORS: AMOUNTS FALLING DUE WITHIN ONE YEAR</b>	3	(68,567)		(4,376)	
<b>NET CURRENT ASSETS</b>			<u>156,385</u>	<u>143,754</u>	
<b>TOTAL ASSETS LESS CURRENT LIABILITIES</b>			<u>168,032</u>	<u>150,467</u>	
<b>FUNDS</b>					
Unrestricted Funds	9		139,657		124,133
Restricted Funds	9		28,375		26,334
			<u>168,032</u>	<u>150,467</u>	

Approved by the Trustees on  
and signed on their behalf

Mr O Goode

Chairman

The Accounting Policies and Notes on pages 14 and 17 to 19 form an integral part of these Accounts.

# CARING FOR GOD'S ACRE

## NOTES TO THE ACCOUNTS 30 APRIL 2022

### 1. TANGIBLE FIXED ASSETS

	Equipment	Total
<b>COST</b>	<b>£</b>	<b>£</b>
Brought Forward	23,695	23,695
Additions	9,010	9,010
Disposals	-	-
As at 30 April 2022	<u>32,705</u>	<u>32,705</u>
<b>DEPRECIATION</b>		
Brought Forward	(16,982)	(16,982)
Charge for Year	(4,076)	(4,076)
On Disposals	-	-
As at 30 April 2022	<u>(21,058)</u>	<u>(21,058)</u>
<b>NET BOOK VALUE</b>		
As at 30 April 2022	<u>11,647</u>	<u>11,647</u>
As at 30 April 2021	<u>6,713</u>	<u>6,713</u>

### 2. DEBTORS

	2022	2021
	<b>£</b>	<b>£</b>
Grant Debtors	59,470	14,390
Other Debtors	2,806	720
	<u>62,276</u>	<u>15,110</u>

### 3. CREDITORS: AMOUNTS FALLING DUE WITHIN ONE YEAR

	2022	2021
	<b>£</b>	<b>£</b>
Accruals	1,775	1,691
Other Creditors	66,792	2,685
	<u>68,567</u>	<u>4,376</u>

# CARING FOR GOD'S ACRE

## NOTES TO THE ACCOUNTS 30 APRIL 2022

<b>4. STAFF COSTS</b>	<b>2022 £</b>	<b>2021 £</b>
Wages and Salaries	<b>181,951</b>	122,779
	<b>181,951</b>	122,779

The average number of full time equivalent employees was 7, in respect of which expenditure was in the following ratios:-

	<b>%</b>	<b>%</b>
Direct Charitable Expenditure	<b>84</b>	84
Management and Administration	<b>16</b>	16
	<b>100</b>	100

### 5. TRUSTEES REMUNERATION AND EXPENSES

None of the Trustees received any remuneration in respect of their activities as Trustees.

### 6. NET EXPENDITURE FOR THE YEAR

This is stated after charging:

	<b>£</b>	<b>£</b>
Depreciation	<b>4,076</b>	4,628
Independent Examiners Fees	<b>1,775</b>	1,691

### 7. CHARITABLE ACTIVITIES

	<b>£</b>	<b>£</b>
Salaries	<b>153,214</b>	105,590
Consumables	<b>2,612</b>	-
Small Projects	-	6,315
Training & Events	<b>9,864</b>	16,082
Travel Expenses	<b>8,424</b>	2,710
Publicity & Information	<b>14,071</b>	8,663
Professional Fees	<b>15,642</b>	16,470
Depreciation	<b>4,076</b>	4,628
	<b>207,903</b>	160,458

# CARING FOR GOD'S ACRE

## NOTES TO THE ACCOUNTS 30 APRIL 2022

### 8. SUPPORT COSTS

	2022 £	2021 £
Salaries	28,737	17,189
Rent & Office Expenses	11,656	10,062
Accountancy Fees	2,330	2,232
Sundry Expenses	29	-
	<u>42,752</u>	<u>29,483</u>

### 9. MOVEMENT ON FUNDS

Restricted	Fund Balance B/F	Incoming Resources	Outgoing Resources	Transfer Funds	Fund Balance C/F
Churchyard Task Team	26,334	9,727	(25,438)	-	10,623
Beautiful Burial Ground	10,836	143,081	(143,847)	-	10,070
Opening The Ark	-	22,099	(21,237)	-	862
Prince of Wales Fund	-	11,750	(11,750)	-	-
Natural Resources Wales	-	8,620	(5,055)	-	3,565
Historic England	-	11,875	(8,620)	-	3,255
	<u>37,170</u>	<u>207,152</u>	<u>(215,947)</u>	<u>-</u>	<u>28,375</u>

Unrestricted	Fund Balance B/F	Incoming Resources	Outgoing Resources	Transfer Funds	Fund Balance C/F
General	106,584	61,068	(34,708)	(4,934)	128,010
Designated Funds: Fixed Assets	6,713	-	-	4,934	11,647
	<u>113,297</u>	<u>61,068</u>	<u>(34,708)</u>	<u>-</u>	<u>139,657</u>



**CARING FOR GOD'S ACRE**

**CHARITY NO: 1155536**

**DETAILED MANAGEMENT ACCOUNTS**

**YEAR ENDED 30 APRIL 2022**

**ARMSTRONG ROGERS & CO**  
**Accountants**  
**LEOMINSTER**

**CARING FOR GOD'S ACRE  
FUNDING INCOME & EXPENDITURE ACCOUNT  
YEAR ENDED 30 APRIL 2022**

		Churchyard	Beautiful
		Task	Burial
	Total	Team	Ground
	£	£	£
<b>INCOME</b>			
Grants & Donations	223,116	21,941	3,750
Interest Received	46	46	-
Members Subscriptions	5,821	5,821	-
Other Income	6,337	6,337	-
Operational Programmes	32,900	26,923	5,977
<b>Total Income</b>	<b>268,220</b>	<b>61,068</b>	<b>9,727</b>
<b>CHARITABLE ACTIVITIES</b>			
Salaries	153,214	14,109	21,531
Consumables	2,612	1,181	75
Training & Events	9,864	329	245
Travel Expenses	8,424	2,003	2,507
Publicity & Information	14,071	6,092	-
Professional Fees	15,642	4,287	170
Depreciation	4,076	1,420	910
	<b>207,903</b>	<b>29,421</b>	<b>25,438</b>
<b>MANAGEMENT &amp; ADMINISTRATION</b>			
Salaries	28,737	28,737	-
Rent & Office Expenses	11,656	6,459	-
Accountancy Fees	2,330	2,330	-
Sundry Expenses	29	29	-
Office Cost Recovery	-	(32,268)	-
	<b>42,752</b>	<b>5,287</b>	<b>-</b>
<b>Total Expenditure</b>	<b>250,655</b>	<b>34,708</b>	<b>25,438</b>
<b>EXCESS INCOME OVER EXPENDITURE</b>	<b>17,565</b>	<b>26,360</b>	<b>(15,711)</b>
<b>FUNDS BROUGHT FORWARD</b>	<b>150,467</b>	<b>113,297</b>	<b>26,334</b>
<b>TRANSFERS BETWEEN FUNDS</b>	<b>-</b>	<b>-</b>	<b>-</b>
<b>FUNDS CARRIED FORWARD</b>	<b>168,032</b>	<b>139,657</b>	<b>10,623</b>

Opening The Ark	Prince of Wales Fund	Natural Resources Wales	Historic England
£	£	£	£
22,099	11,750	8,620	11,875
-	-	-	-
-	-	-	-
-	-	-	-
-	-	-	-
<hr/>			
22,099	11,750	8,620	11,875
<hr/>			
15,792	-	3,668	1,779
45	22		-
400	-		4,856
504	-	88	804
48	2,192	-	-
	2,158	795	132
424	-	-	-
<hr/>			
17,213	4,372	4,551	7,571
<hr/>			
-	-	-	-
-	-	-	-
-	-	-	-
-	-	-	-
4,024	7,378	504	1,049
<hr/>			
4,024	7,378	504	1,049
<hr/>			
21,237	11,750	5,055	8,620
<hr/>			
862	-	3,565	3,255
-	-	-	-
-	-	-	-
<hr/>			
862	-	3,565	3,255
<hr/>			

**SCHEDULE OF FIXED ASSETS**  
**YEAR ENDED 30 APRIL 2022**

	C O S T				D E P R E C I A T I O N					NET BOOK VALUE 30.4.2022 £
	As at 1.5.2021 £	Additions £	Disposals £	As at 30.4.2022 £	As at 1.5.2021 £	On Disposals £	Rate	This Year £	As at 30.4.2022 £	
<b>EQUIPMENT</b>										
Scythes	3,906	3,395		7,301	(1,431)		15	(881)	(2,312)	4,989
Garden Tools	449			449	(385)		15	(10)	(395)	54
Wheeled Trimmer	839			839	(824)		33	(5)	(829)	10
Hand Hay Baler	220			220	(216)		33	(1)	(217)	3
Wheeled Trimmer	839			839	(824)		33	(5)	(829)	10
Hand Hay Baler	350			350	(344)		33	(2)	(346)	4
19" TFT Monitor	129			129	(118)		33	(4)	(122)	7
Olympus Camera	430			430	(425)		33	(2)	(427)	3
Computer Equipment	800			800	(786)		33	(5)	(791)	9
2 Book cases	336			336	(327)		33	(3)	(330)	6
3 Tables and Chairs	586			586	(570)		33	(5)	(575)	11
Perch Office Stool	150			150	(130)		33	(7)	(137)	13
Website	6,600			6,600	(6,600)		3yrs		(6,600)	
Filming Equipment	1,379			1,379	(760)		33	(204)	(964)	415
Dell Laptop	2,442			2,442	(1,346)		33	(362)	(1,708)	734
Samsung Tablet	433			433	(239)		33	(64)	(303)	130
IT Equipment	475			475	(262)		33	(70)	(332)	143
Laptop	555			555	(306)		33	(82)	(388)	167
Office Chair	351			351	(98)		15	(38)	(136)	215
Microsoft Surface	649			649	(358)		33	(96)	(454)	195
Zoom Recorder	213			213	(117)		33	(32)	(149)	64
Dell Laptop	485			485	(160)		33	(107)	(267)	218
Asus ExpertBook	1,079			1,079	(356)		33	(239)	(595)	484
Printer		204		204			33	(67)	(67)	137
Office Chair		410		410			33	(135)	(135)	275
Asus Laptop		526		526			33	(174)	(174)	352
Dell Laptop & Monitor		759		759			33	(250)	(250)	509
Vostro 3515 Laptop		809		809			33	(267)	(267)	542
Cycle		2,907		2,907			33	(959)	(959)	1,948
<b>TOTAL</b>	<b>£23,695</b>	<b>£9,010</b>		<b>£32,705</b>	<b>(£16,982)</b>			<b>(£4,076)</b>	<b>(£21,058)</b>	<b>£11,647</b>