

EAT CARY

Registered Charity No. 1154857

2021 Annual Report and Financial Statements

1st April 2020 to 31 March
2021

Our faithful friend!



EAT CARY

Registered Charity No. 1154857

Annual Report for 2020/21

Introduction

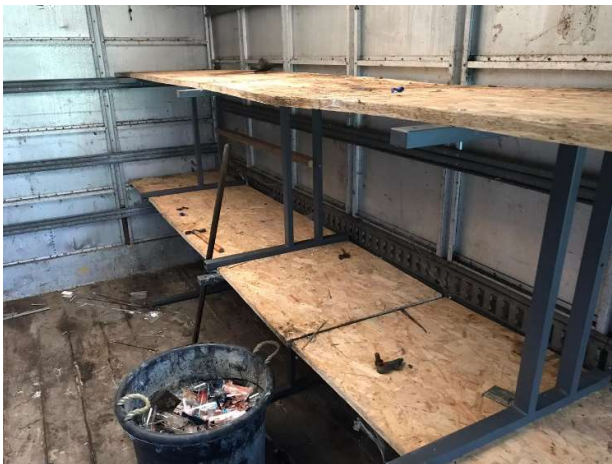
The COVID 19 pandemic continued to overshadow our work, although in some ways we have been fortunate in having such a lovely outdoor environment to work in, and with reduced traffic levels on the road outside it has been a quiet and peaceful place to be.

Early in 2021 we resorted to zoom meetings for our gardening team and found that we could have discussions this way which were both useful for gardening plans but also meant we maintained social contact with each other. As 2021 wore on we relaxed a little about numbers of people working together, but of course with such a large site it was easy to socially distance responsibly, and we certainly kept to the rule of no more than one person or household in the polytunnel at any one time, and also continued to avoid sharing tools.

After the end of the financial year this report covers, things were beginning to get back to normal, and now Saturday afternoons are becoming again a point in the week for working and meeting together. We are delighted too to have recruited some new workers.

Site improvement and maintenance

Ongoing maintenance for the polytunnel included re-placing the window polythene and repairing the door frame at the east end. The west door frame has suffered some minor damage recently and is currently on the repair programme. The main polytunnel skin has suffered many more holes recently and been repaired numerous times



Shelving in the compound

The skin of the polytunnel is nearing eight years old. Its expected life is 10 years so it is coming to its natural end of life and its replacement will need to be factored into future budgeting. (approx. £1000 + fitting)

Stephen Rymer has kindly repaired the main pumped watering system for the polytunnel and replaced the main pump and added a filter. In addition, the main tank cover was repaired and made safe, Stephen has also overhauled the watering timer units as required. Johnny overhauled the autopots, ordered new parts as

necessary, and brought the spare ones into use, but despite his best efforts they still did

not operate very satisfactorily and will need looking at again over the winter ready for the next season.

The motorised equipment has been maintained and repaired as necessary. Some of the mowers, strimmers and trimmers that are not currently used are stored and can be put back into service as and when needed.

The main ride-on mower has been kept serviced but is clearly showing its age but should be OK for the next season. Again, it would be wise to factor in a replacement budget for the future (approx. £1300)

The addition of a key box now allows access to the equipment shed and equipment to all members of the group.

Paul Baker and many others have made a grand job of tidying the compound. Paul with Johny's help has kindly built benching under the covered area with shadow type boarding for storing the hand tools. This is more secure than the open access small shed previously used and also makes it easy to look after the tools tidily. All tools are now stored in the compound.



In general the mowing of the whole area has been changed to only mowing essential access routes and areas. Thanks to Cav, Stephen and Nuri for continuing the mowing since the lockdown meant the students could no longer do it

The raised beds outside the polytunnel are gradually collapsing despite all efforts to shore them up. So two were replaced with "Hugel Kultur" heaps (we call them Hugelhumus) to meet Nuri's boys' enthusiasms for growing pumpkins for 2021 Hallowe'en. Which they successfully did, but that is a story for our 2021-22 report. Meanwhile we need to consider the future of the raised beds as they will scarcely survive another year but are important for our winter saladings, carrots, strawberries etc. The use of two of them has also been requested by the Beavers..

Building the hugelhumus

Our compost bins are also unlikely to last much more than another year – Paul and Adrian did a wonderful job using pallets etc to bring them back to a usable state, but they will need further attention next year.

Growing regime

Growing at Eat Cary

The 2019/20 growing report ended with *"....using mostly social media.., has been a loss, and not helped to keep written records and 'a story'"*. Well, reviewing the year's 'chats' it has actually produced a wealth of information, with the titbits I had always hoped to have in the records.

We have weather reports - and across two years they help explain some growth and harvest changes. Apologies sent when committed growers are unable to keep their planned visit, will help us appreciate the challenges, and why others not yet caught by the 'bug' might have difficulty starting or staying. Gardening jobs were shared and accepted more readily. It seems simple, but we know users find difficulty to check a 'to do' list and take a job, - and all more difficult when most of this year we have been visiting/working separately. We also show much can be achieved in just 2 hours with 2/3 people when together.

Range of Plants –we have achieved a broader choice as aimed, continuing to harvest throughout the year, using the polytunnel, and protection outside when needed. Some like tomatoes didn't know when to stop – last harvest record 12th December. The fact that we had frosts this season made this even more a success.

Zoom meetings brought more voices to choose the seeds and share the sowing and this brought many different varieties as well as new veg types grown.

Flower range also widened, sweet peas made great tripod statements and all beds edged with plants to attract pollinators as well as the Bee bed which continues to thrive, increasing itself and we have divided plants to add into rougher grass areas around site. Plans are to intercrop flowers and veg for increased diversity and to keep the garden 'abuzz'.



Sowing broad beans in the autumn

A failed potato crop due to 'bug' activity, prompted a potato bag trial, but poor results again. Late planting, possibly not enough interest to grow them and watering irregularities coupled with unseasonal heat in polytunnel are this year's excuses. Pest irritations though appear increased, perhaps because we had a quick way to show despair but we must be watchful.

The challenge to take forward *again* is our fruit production. Cropping well was rhubarb, the vine (one user gives tlc to both). and autumn raspberries (from July!) but we gave poor care and little reward for other soft fruit. We had taken cuttings for increased stock, they grew well, but they still sit unplanted. Time, position, effort required for new beds all to be discussed, as it was a wish to increase this harvest.

Improved succession sowing was a third aim, and germination failures made this a necessity. A lesson of 'sowing with the weather not the date' might be learnt, as most came good in the later sowings. Broad beans were a true success, with 3 sowings, all cropping well til May, with better wind protection. We have missed a brassica window though, and will be without sprouts, and spring cabbage this year.

Sustainability is considered within all our work in the garden: water systems, re-using & recycling materials to create nets, windbreaks, cloches, supports, repair to compost bins, nettle and comfrey feeds, saved seed for the legume vegetables. Mixing our own compost for potting and sowing continues, (nothing bought in), but no proper recording to know if affecting germination or growth. A leaf mulch store was begun for the first time, gathering

from around site and brought in. This could be an example of us having the space, which has more potential use, for the wider community. Our labelling could also still be improved; we really need an artist not a gardener on the team to be more creative with us, and the forever elusive time.



This will surely keep the birds away!

The long-awaited opening of the “Community Larder” has given us somewhere to take any spare vegetables, and we have taken the opportunity to include cooking tips and also advertise ourselves in a little leaflet which goes with the vegetables. All of this fits well with our philosophy of encouraging people to eat healthily using local homegrown resources where possible.

Our numbers have fluctuated during the year. Meg and Adrian have recently moved away and we very much miss them. But recently we have added more people to our team and our Pumpkin Fest in early October this year, was a great success despite appalling weather. We hope to follow the forthcoming AGM with an opportunity to discuss what we will grow in 2022

Publicity and promotion

It has not been an easy year for publicity, although we have continued to put articles in the Town Newsletter and entries on our Facebook Page.

Conclusions and the future

The future is beginning to look brighter – Covid is hopefully retreating, there is ever increasing interest in sustainability, healthy eating and local produce. The Community Larder gives us an easy route for sharing the food we produce and supports the fulfilment of our objects, and our numbers are increasing giving us greater capacity for production. Our biggest challenges this coming year will probably be taking the right steps at the right time to replace some of our basic infrastructure and equipment, and to continue to build a positive relationship with Ansford Academy.

October 2021

EAT CARY

Legal and administrative information

Charity Registration Number: 1154857; **Date of registration:** 4 December 2013

Financial Year: 1st April 2020 - 31st March 2021

Trustees at 1 April 2020:

Bernadette Logan, Timothy Charles Earle-Marsh, Rosemary Ann Rymer'

Laura Tilling, Ida Rosina West

Terms of Office ending at 2021 AGM: None

Coopted January 2021 Nuri Fontanals. Formal election required at 2021 AGM

Objects:

To advance in life and help local people through providing support and activities which develop their skills, capacities and capabilities to enable them to participate in society as mature and responsible individuals.

To advance the education of the public, including the pupils at Ansford Academy, in the subjects of horticulture, gardening, cooking, healthy eating and related topics.

To advance the education of the local community in the sustainable use, protection and improvement of the natural environment.

Correspondence address:

Marshland, Station Road, Castle Cary, BA7 7BX

Primary Bankers:

The Co-operative Bank Community Direct Plus account

**Statement of financial activities for the year ended
31st March 2021**

	2020/21	2019/20
Income analysis:		
Donation	£ 5.00	.
Total income	£ 5.00	
Expenditure analysis:		
Infrastructure (replacement parts, etc)	£ 387.93	£ 70.63
Insurance	£ 100.80	£ 100.80
Total expenditure	£ 488.73	£ 171.43

Bank reconciliation

Balance at 31.03.20:	£2,076.83
Balance in bank account on 31.03.20	£2,076.83
Income for year:	£ 5.00
Expenditure for year:	£ 488.73
Balance at bank on 31.03.21:	£1,593.10

Independent Examiner's Report on the Receipts and Payments Accounts

**Report to the Trustees of Eat Cary (Registered Charity Number 1854857)
on the accounts for the year ended 31st March 2021**

Respective responsibilities of trustees and examiner

As the charity's trustees you are responsible for the preparations of the accounts; you consider that the audit requirement of sections 43(2) Charities Act 1993 (the Act) does not apply. It is my responsibility to state on the basis of procedures specified in the General Direction given by the Charity Commissioners under section 43(7) of the Act, whether particular matters have come to my attention.

Basis of independent examiner's report

My examination was carried out in accordance with the General Directions given by the Charity Commissioners. An examination includes a review of the accounting records kept by the charity and a comparison of the accounts presented with those records. It also includes consideration of any unusual items or disclosures in the accounts, and seeking explanations from you trustees concerning any matters. The procedures undertaken do not provide all the evidence that would be required in an audit and consequently I do not express an audit opinion on the view given by the accounts.

Independent Examiner's Statement

In connection with my examination, no matter has come to my attention

- * which gives me reasonable cause to believe that in any material respect the requirements to keep accounting records in accordance with section 41 of the Act, and to prepare accounts which accord with the accounting records and to comply with the accounting requirements of the Act have not been met, or
- 2. to which, in my opinion, attention should be drawn in order to enable a proper understanding of the accounts to be reached.

Signed: 

Date: 4/8/21

Name: GEORGE
LAWSON

Address: UNDERWOODS
WESTON BAMPFYLDE
BA22 7HU.