



Friends of Herbert
Thompson:
A Trustees' Annual
Report 2024 -2025

Charity Registration Number: 1154690

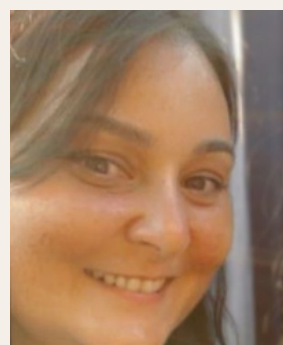
Charity Purpose

Friends of Herbert Thompson exists to advance the education of pupils at Herbert Thompson Primary School by:

1. Developing strong, effective relationships between the school, parents, carers and others associated with the school.
2. Engaging in activities or providing facilities or equipment which support the school and advance the education of the pupils.

Trustees during the reporting period:

- Chair: Mrs Sheena Marsh
- Miss Sabrina Amor
- Mrs Ann-Marie Gouveia
- Mrs Ceri Perry
- Mrs Joanne Page



Herbie's Hut



Herbie's Hut was established in 2021 and it continues to provide affordable access to food, offering over £20 worth of groceries on a "pay as you can" basis, alongside emergency food support for families in crisis. Delivery of the service was supported by regular FareShare food donations and grant funding from the Arnold Clark Foundation and Community Foundation Wales. Herbie's Hut operates as part of the wider Big Bocs Bwyd network, helping to reduce food insecurity and stigma through dignified, community-led provision.

During the year:

- 442 food shops distributed (approx. £20 value each)
- 26 emergency food parcels issued
- 13 foodbank vouchers provided
- Health Visitors accessed the shop to directly support families

These services significantly reduced food insecurity and strengthened trust and engagement with families most in need.



Family Room and Adult Learning Provision



The refurbished Family Room provides a safe, welcoming space for learning, connection and support.

Key developments included:

- Continued Empower Her sessions which is a volunteer-led group supporting women with English as an Additional Language through cooking, cultural exchange, knitting and social learning.
- Delivery of an inclusive Eid celebration, bringing together families from different cultural backgrounds.
- Introduction of a Community Lending Library to promote literacy and lifelong learning.

During the year, 89 adults completed accredited and non-accredited courses including:

- Food and Nutrition (Level 2)
- Childcare (Levels 1–3)
- Family Learning Together
- Family Cooking

These courses supported confidence, employability and progression into further education or work.



Community Repair Shop & Woodwork Shed



With funding of £10,000 from Ely and Caerau Learning Partnership and £1,996.47 from Cardiff Council's Cohesion Grant, a community repair shop was established in a repurposed shipping container from June 2025.

The project supported 206 families and delivered:

- Weekly family woodwork sessions (continuing beyond summer 2025)
- A forthcoming monthly Repair Café
- Bike maintenance training for 23 school staff from 10 Cardiff schools and 6 community members
- 63 bikes repaired, supporting sustainable travel and cost reduction
- A women-led clothing repair group repairing 8 items

Twelve volunteers supported the project, building benches and planters with embedded mental health signposting to services including Brawd, YoungMinds and Childline. A carpenter is developing community carpentry classes, supporting employment pathways and skills development.



Thompson's Treasures Boutique



Research carried out in partnership with Child Poverty Action Group (CPAG) highlighted the significant impact of school costs on families and pupils. Findings showed widespread financial stress affecting attendance, wellbeing and engagement. With the support of The National Lottery, the charity has responded by:

- Supported over 500 families through a free preloved uniform stand
- Refurbished part of the school's PESS Hut into Thompson's Treasures Boutique, a dignified, stigma-free preloved shop.

The shop provides:

- Clothing, uniforms and footwear
- Household and seasonal items
- Stationery
- Next Steps – Access to computers and a phone line in partnership with Cardiff Council's Into Work and Cardiff Adult Learning Team.



Our Pumpkin Event



The pumpkin event engaged Year 5 pupils, their families and the wider community in practical food education and sustainability. Pupils worked alongside a dietitian to explore the nutritional value of pumpkins, develop basic cooking skills and learn how to reduce food waste. Family involvement helped reinforce learning at home, with recipes and discussions continuing beyond the event. Creative activities, gardening workshops and hands-on cooking encouraged curiosity about seasonal food and sustainable lifestyles. Importantly, the project also prevented large quantities of edible pumpkins from going to waste, demonstrating how surplus food can be used positively while promoting healthy, affordable eating.



Summer Holiday Programme



A six-week inclusive summer programme supported children including young carers, pupils with ALN and EAL and families receiving Free School Meals.

Key outcomes:

- Attendance doubled from 40 to 80 pupils
- 360 families engaged in Cooking Together sessions.
- 542 families attended Family Fun Days.
- 292 food parcels distributed.
- 382 postcodes engaged.
- 94% of Herbie's Hut users came from the most deprived areas.
- Activities reduced isolation, strengthened family relationships and improved wellbeing, confidence and practical life skills. Young people gained volunteering and paid work experience.



Volunteers, Partnerships & Community Champions

Approximately 16 volunteers supported the charity during the year, playing a vital role in delivering services and strengthening community capacity. The charity worked closely with Herbert Thompson Primary School and partners across health, education and the voluntary sector to provide joined-up, trusted support for families.

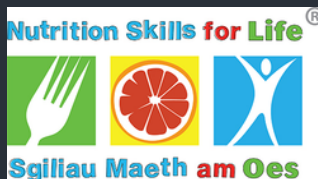
The Community Champions are an organically formed group of parents and carers who support the charity and the school. Two members also serve as trustees. The group advocates for the school, supports and leads fundraising activities and acts as a trusted link between families, the school and community services.

Community Champions help increase family engagement, support attendance and wellbeing and contribute to the co-design of inclusive activities and events. They act as positive role models, share lived experience to inform practice and help connect families to additional support. Through this model, the charity has strengthened trust, amplified parent voice and improved engagement across the school community.

Our Empower Her ladies' group continues to grow and thrive. This welcoming group of EAL women meets every Tuesday morning in the Family Room, where they support one another and build strong connections. Activities alternate weekly between cooking and crocheting and new members are always warmly welcomed. The group is inclusive, friendly and rooted in care and generosity. Members love sharing food, culture and personal stories, using cooking and creativity to celebrate their heritage and build a sense of belonging.



We'd like to thank all our funders, partners and volunteers for their generous support



Finances

Balance 31st August 2024 was £22,371.10

INCOME

| | |
|---------------------|-------------------|
| Government grant | £1,996.47 |
| Grants received | £29,300 |
| Herbie's Hut income | £2,213.12 |
| Refund | £62.98 |
| Bank interest | £1.60 |
| Unpaid cheque | £10,000 |
| Total | £33,574.17 |

EXPENDITURE

| | |
|---------------------------|-------------------|
| Capital Costs | £38,960.78 |
| Revenue costs | £5,868.06 |
| Governance & Support cost | £160 |
| FareShare Subscription | £2,986.25 |
| Total | £47,975.09 |

Balance 31st August 2025 is £8,292.18

Two outgoing cheques are awaiting to be cashed for the sum of £322

Funding summary

Donations

£0

Grants

£31,296.47



SPECIMEN STATEMENT FOR THE FUND AUDITOR

NAME OF CHARITY: Friends of Herbert Thompson

NAME OF BANK / ACCOUNT HELD: Lloyds

ACCOUNT NUMBER: 41425668

ACCOUNT BALANCE AS AT: 31.08.25 £ 8292.18

I certify that I have inspected all the records which have been made available to me relating to income and expenditure for the period (01.09.24) to (31.08.25) and that these correspond with the entries in the financial accounts.

I also confirm that the total recorded balance of all the charities accounts, as disclosed to me and as stated in the financial records at (31.08.25), accords with the bank statements and/or other official notification of balances held.

The account discloses only income that has been counted and banked. I can also confirm that the items of income and expenditure recorded in the accounts fall within the scope of the private fund.



Signature: _____ Date 16/11/2025
:

Print Name: Anna James

Position /
Profession: Bookkeeper / Anna James Bookkeeping

N.B. This statement can be amended to accommodate any other records examined.

