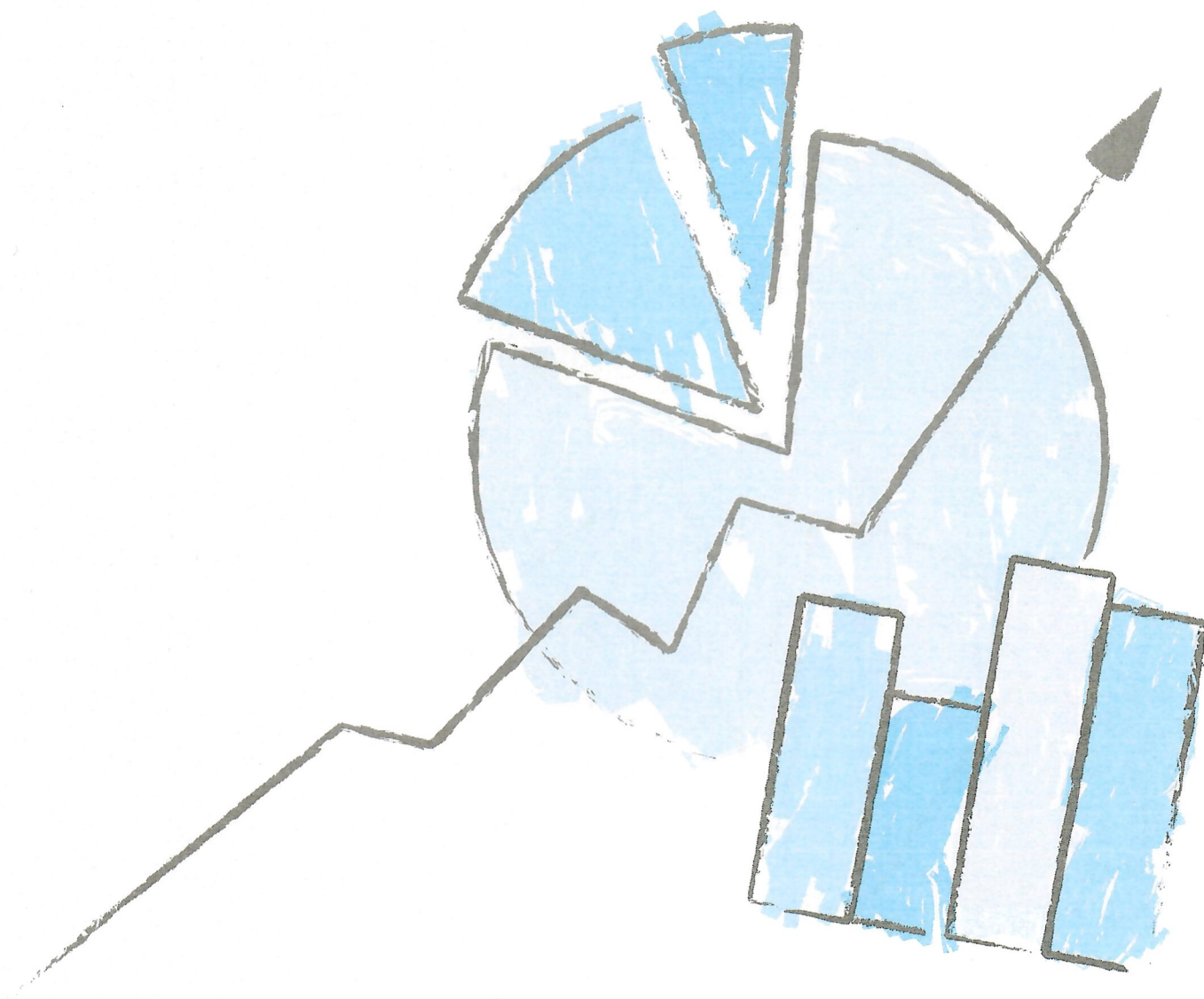




Holford Drive Community Sports Hub Limited Financial Statements

For the Year Ended 31 January 2022
Company Registration No: 08372141
Registered Charity Number: 1153926



Holford Drive Community Sports Hub Limited

**Contents of the Financial Statements
for the Year Ended 31 January 2022**

	Page
Report of the Trustees	1 to 3
Independent Examiner's Report	4
Statement of Financial Activities	5
Balance Sheet	6
Notes to the Financial Statements	7 to 10

Holford Drive Community Sports Hub Limited

Report of the Trustees for the Year Ended 31 January 2022

The trustees present their report with the financial statements of the charity for the year ended 31 January 2022. The trustees have adopted the provisions of Accounting and Reporting by Charities: Statement of Recommended Practice applicable to charities preparing their accounts in accordance with the Financial Reporting Standard applicable in the UK and Republic of Ireland (FRS 102) (effective 1 January 2015).

OBJECTIVES AND ACTIVITIES

Principal activity and constitution

The company is registered as a charitable company limited by guarantee and was set up by a Memorandum of Association on 23 January 2013.

The company is constituted under a Memorandum of Association dated 23 January 2013 and is a registered charity, number 1153926.

The principal object of the company is to provide facilities for recreation or other leisure time for the inhabitants of Perry Barr, Aston and the surrounding area.

Policies and objectives

The objectives of the charity are:

- To promote for the benefit of the inhabitants of Perry Barr, Aston and the surrounding area the provision of facilities for recreation or other leisure time occupations of individuals who have a need of such facilities by reason of their youth, age, infirmity or disablement, financial hardship or social and economic circumstances or for the public at large in the interest of social welfare and with the object of improving the condition of life of the said inhabitants.
- To promote community participation in healthy recreation by providing and promoting facilities and organising activities for the playing of sport.
- To advance in life and help young people through:
 - The provision of recreational and leisure time activities provided in the interest of social welfare, designed to improve their conditions of life.
 - Providing support and activities which develop their skills, capacities and capabilities to enable them to participate in society as mature and responsible individuals.

Method of appointment or election of trustees

The management of the company is the responsibility of the trustees who are elected and co-opted under the terms of the Articles of Association.

According to the Articles of Association the board should comprise of no more than ten nominated trustees of whom:

- One may be nominated by Birmingham City Council
- One may be nominated by Broadway Academy
- Eight may be nominated by the affiliated sports club appointing bodies with no more than two trustees per sports club
- Two may be nominated by the board to fill any skill gaps
- One may be nominated by the board to bring community knowledge

Public benefit

In setting objectives and planning for activities, the trustees have given due consideration to general guidance published by the Charity Commission relating to public benefit.

ACHIEVEMENT AND PERFORMANCE

Major activities and achievements

Having taken over the operations of the HUB through the community asset transfer in November 2013 the year to 31 January 2022 was another year of consolidation and development of the facilities.

The four core sports clubs are all very different in their scale, ambitions, and operation, performing at different levels and different stages of their development. The pandemic has presented very difficult challenges for the Sports Hub board. For example, due to issues with the pitch, Cricket has been very operational. We have had Last Man Stands cricket on two days of the week with a few disruptions due to Covid regulations. Handsworth CC 3rds has played their first season at the sports hub albeit on the Astro pitch, which was used while preparation on the grass playing square was being maintained by volunteers, the 3rds went on to win their respected league. School cricket and a community cricket team have all benefited from the resurgence and maintenance of the cricket square. Finally, the emergence of Ace Cricket Academy was set up at the Sports Hub with a lot of advertisement on Sky Sports.

Mixed sporting activities has been delivered through PACT after school programmes and successful numbers engaged. However, the ability of the Sports Hub to sustain these activities on a permanent basis has proved challenging due to the quid pro quo process.

The Sports Hub is establishing a new infrastructure to sustain programmes soon which will support core income for our sustainable business model, as the young people are key assets to the Sports Hub and their rites of passage must be embraced.

Holford Drive Community Sports Hub Limited

Report of the Trustees - continued for the Year Ended 31 January 2022

In the background table tennis is now acknowledged as a progressive sports club at HDCSH, engaging good numbers and receiving acknowledgement for their developments.

The tennis operating model for the Charity has not evolved in a new way to counter the issues relating to gate access to the Sport Hub after the easing of lockdown, nevertheless the members have worked diligently together to maintain the user numbers.

Football has and is flourishing with on and off the field activities, the under-16 team finished 4th in a very competitive division, several of the players has signed semi pro deals or accessed football and education programmes. A couple of new junior teams has been established, but suffered with Covid regulations. The biggest step has been the forming of a women's football team. This has supported the disparity issues of society using football as a medium for engagement!

Overall contribution via the commitment of voluntary hours by the Chair and Secretary as an 'in kind' contribution from football does not show that all bookings for the sports hub the near 100 joint hours per week are solely done through their commitment, which is not recognised in the quarterly and annual accounts segments.

Boxing

Aston ABC began the year operating within government guidelines with no competitions, and reduced training. As August came around, we were able to resume boxing and with England Boxing making the decision to run the full championship calendar 2020/2021 before the end of December. To catch up a full training timetable was restarted.

We kicked off with the school championships where we finished with a Midlands Championship title and one of our female boxers reaching the National Finals in Newcastle. Next was the Junior championships where we had 2 Midlands title winners and one boxer reaching the National Finals. Again, we had a female boxer winning her first National Final title.

In the senior elite and development championships we had a boxer reaching the Elite semi-finals. This secured him a call up for a GB assessment, the same competition that saw us collect a Midlands finalist and National finalist in the developments.

Participation numbers had dropped off with the Covid restrictions, but by the end of financial year members were back in full numbers. Female boxing has continued its popularity with numbers slightly increasing this year. The partnership between a local Secondary school has continued to prove popular with its after-school session showing steady numbers.

PLANS FOR FUTURE PERIODS

- Continue to develop and promote the existing club's programmes
- Continue to apply for grants and funding projects

FINANCIAL REVIEW

Total income for the year was £40,064 (2021: £50,020) of which £37,064 was unrestricted (2021: £45,020) and £3,000 was restricted (2021 £5,000).

Total funds carried forward at the year end were £71,998 (2021: £68,806) of which £54,938 was unrestricted (2021 £49,246) and £17,060 were restricted (2021: £19,560).

Risk management

The trustees have identified certain risks to which the charity is exposed as part of their responsibilities as trustees running the charity. The main risks identified relate to Health and Safety issues. The trustees have a general Health and Safety policy in place which is strictly followed.

Going concern

After making appropriate enquiries, the trustees have a reasonable expectation that the charity has adequate resources to continue in operational existence for the foreseeable future. For this reason they continue to adopt the going concern basis in preparing the financial statements.

Reserves policy

The trustees have reviewed the charity's requirements for reserves. This is completed on an annual basis. The general reserves are required for working capital purposes. The general reserves stood at £54,938 at 31 January 2022 (2021: £49,246). The trustees believe that this is sufficient to enable the charity to continue its activities. The trustees believe that this level of reserves will support any unforeseen reduction in the income by the charity.

Investment powers

Under the deed the charity has the power to make any investments the trustees see fit.

Holford Drive Community Sports Hub Limited

**Report of the Trustees - continued
for the Year Ended 31 January 2022**

REFERENCE AND ADMINISTRATIVE DETAILS

Registered charity number
1153926

Registered office address
101 Holford Drive
Birmingham
West Midlands
B42 2TU

Trustees

L Moses
D Sawyers
J Homer
E Codrington
K John
B Hazel
D Collette – appointed 10 November 2021
T Brown – appointed 10 November 2021

Independent examiner

Adam Law FCCA
Utopia Accounting Limited
12 The Fairways
Walmley
Sutton Coldfield
West Midlands
B76 1FZ

STATEMENT OF TRUSTEES RESPONSIBILITIES

The trustees are responsible from preparing the Report of the Trustees and the financial statements in accordance with applicable law and United Kingdom Accounting Standards (United Kingdom Generally Accepted Accounting Practice), including Financial Reporting Standard 102 "The Financial Reporting Standard applicable in the UK and Republic of Ireland".

The law applicable to charities in England and Wales, the Charities Act 2011, Charity (Accounts and Reports) Regulations 2008 and the provisions of the trust deed requires the trustees to prepare financial statements for each financial year which give a true and fair view of the state of affairs of the charity and of the incoming resources and application of resources, including the income and expenditure, of the charity for that period. In preparing those financial statements the trustees are required to

select suitable accounting policies and then apply them consistently;
observe the methods and principles in the Charity SORP;
make judgements and estimates that are reasonable and prudent;
state whether applicable accounting standards have been followed, subject to any material departures disclosed and explained in the financial statements;
prepare the financial statements on the going concern basis unless it is inappropriate to presume that the charity will continue in business.

The trustees are responsible for keeping proper accounting records which disclose with reasonable accuracy at any time the financial position of the charity and to enable them to ensure that the financial statements comply with the Charities Act 2011, the Charity (Accounts and Reports) Regulations 2008 and the provisions of the trust deed. They are also responsible for safeguarding the assets of the charity and hence for taking reasonable steps for the prevention and detection of fraud and other irregularities.

Approved by order of the board of trustees on 16 August 2022 and signed on its behalf by:

B Hazel - Trustee


**Independent Examiner's Report to the Trustees of
Holford Drive Community Sports Hub Limited**

We report on the accounts for the year ended 31 January 2022 set out on pages 5 to 10.

Respective responsibilities of trustees and examiner

The charity's trustees (who are also the directors for the purposes of company law) are responsible for the preparation of the accounts. The charity's trustees consider that an audit is not required for this year (under Section 144(2) of the Charities Act 2011 (the 2011 Act)) and that an independent examination is required.

Having satisfied ourselves that the charity is not subject to audit under company law and is eligible for independent examination, it is our responsibility to:

- examine the accounts under Section 145 of the 2011 Act
- to follow the procedures laid down in the General Directions given by the Charity Commission (under Section 145(5)(b) of the 2011 Act); and
- to state whether particular matters have come to our attention.

Basis of the independent examiner's report

Our examination was carried out in accordance with the General Directions given by the Charity Commission.

An examination includes a review of the accounting records kept by the charity and a comparison of the accounts presented with those records. It also includes consideration of any unusual items or disclosures in the accounts, and seeking explanations from you as trustees concerning any such matters. The procedures undertaken do not provide all the evidence that would be required in an audit, and consequently no opinion is given as to whether the accounts present a 'true and fair view' and the report is limited to those matters set out in the statements below.

Independent examiner's statement

In connection with our examination, no matter has come to our attention:

- (1) which gives us reasonable cause to believe that, in any material respect, the requirements
 - to keep accounting records in accordance with Section 386 and 387 of the Companies Act 2006; and
 - to prepare accounts which accord with the accounting records, comply with the accounting requirements of Sections 394 and 395 of the Companies Act 2006 and with the methods and principles of the Statement of Recommended Practice: Accounting and Reporting by Charities have not been met; or
- (2) to which, in our opinion, attention should be drawn in order to enable a proper understanding of the accounts to be reached.



Adam Law FCCA
Utopia Accounting Limited
12 The Fairways
Walmley
Sutton Coldfield
West Midlands
B76 1FZ

16 August 2022

Holford Drive Community Sports Hub Limited

Statement of Financial Activities for the Year Ended 31 January 2022

		Unrestricted funds £	Restricted funds £	Total 2022 funds £	Total 2021 funds £
	Notes				
INCOME FROM					
Perry Barr Neighbourhood Network Scheme	2	-	3,000	3,000	-
The Big Lottery Fund	2	-	-	-	10,000
English Sports Council Lottery Fund	2	-	-	-	5,000
South and City College Birmingham	2	-	-	-	-
England and Wales Cricket Trust	2	-	-	-	-
Donations		-	-	-	-
Incoming resources from charitable activities		37,064	-	37,064	35,020
Other income		-	-	-	-
Total		37,064	3,000	40,064	50,020
EXPENDITURE ON					
Charitable activities	3				
Direct charitable expenditure		-	-	-	-
Grants to institutions		-	5,500	5,500	5,000
Other		31,372	-	31,372	42,104
Total		31,372	5,500	36,872	47,104
NET INCOME/(EXPENDITURE)		5,692	(2,500)	3,192	2,916
Transfers between funds		-	-	-	-
Net movement in funds		5,692	(2,500)	3,192	2,916
RECONCILIATION OF FUNDS					
Total funds brought forward		49,246	19,560	68,806	65,890
TOTAL FUNDS CARRIED FORWARD		54,938	17,060	71,998	68,806

CONTINUING OPERATIONS

All income and expenditure has arisen from continuing activities.

Holford Drive Community Sports Hub Limited

Balance Sheet At 31 January 2022

	Not es	Unrestricted funds £	Restricted funds £	Total 2022 funds £	Total 2021 funds £
FIXED ASSETS					
Tangible assets	6	2,095	-	2,095	2,631
CURRENT ASSETS					
Debtors	7	27,184	-	27,184	16,677
Cash at bank		<u>28,778</u>	<u>17,060</u>	<u>45,838</u>	<u>56,106</u>
		55,962	17,060	73,022	72,783
CREDITORS					
Amounts falling due within one year	8	(3,119)	-	(3,119)	(6,608)
NET CURRENT ASSETS		<u>52,843</u>	<u>17,060</u>	<u>69,903</u>	<u>66,175</u>
TOTAL ASSETS LESS CURRENT LIABILITIES		<u>54,938</u>	<u>17,060</u>	<u>71,998</u>	<u>68,806</u>
NET ASSETS		<u>54,938</u>	<u>17,060</u>	<u>71,998</u>	<u>68,806</u>
FUNDS	9				
Unrestricted funds:					
General fund				54,938	49,246
Restricted funds				17,060	19,560
TOTAL FUNDS				<u>71,998</u>	<u>68,806</u>

For the financial year ending 31 January 2022 the charity was entitled to exemption from audit under section 477 of the Companies Act 2006 relating to small companies.

Trustees responsibilities

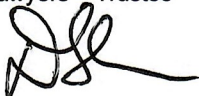
The members have not required the charity to obtain an audit of its accounts for the year in question in accordance with section 476; and

The trustees acknowledge their responsibility for complying with the requirements of the Act with respect to accounting records and the preparation of accounts.

These accounts have been prepared in accordance with the provisions applicable to companies subject to the small companies regime.

The financial statements were approved by the Board of Trustees on 16 August 2022 and were signed on its behalf by:

D Sawyers – Trustee



J Homer - Trustee



The notes form part of these financial statements

1. ACCOUNTING POLICIES

Statutory information

Holford Drive Community Sports Hub Limited is a charitable company limited by guarantee and is incorporated in the United Kingdom (England and Wales). The registered office address and operational address is 101 Holford Drive, Birmingham, West Midlands, B42 2TU.

Basis of preparing the financial statements

The financial statements of the charity, which is a public benefit entity under FRS 102, have been prepared in accordance with the Charities SORP (FRS 102) 'Accounting and Reporting by Charities: Statement of Recommended Practice applicable to charities preparing their accounts in accordance with the Financial Reporting Standard applicable in the UK and Republic of Ireland (FRS 102) (effective 1 January 2015)', Financial Reporting Standard 102 'The Financial Reporting Standard applicable in the UK and Republic of Ireland' and the Charities Act 2011. The financial statements have been prepared under the historical cost convention, as modified by the revaluation of certain assets.

Income

Income is brought into account when it is more likely than not that the economic benefit of the income will accrue to the charity.

Expenditure

This is recognised when a liability is incurred, or a constructive obligation arises, that results in the payment being unavoidable. Liabilities are recognised as soon as an outflow of economic benefit is considered more likely than not under the legal or constructive obligation committing the charity to pay out resources.

Governance costs

These are the costs associated with the general running of the charity and its strategic management, rather than the costs of its charitable activities and day to day management.

Taxation

The charity is exempt from tax on its charitable activities.

Tangible fixed assets and depreciation

Tangible fixed assets are measured at cost less accumulated depreciation and any accumulated impairment losses. Depreciation is provided at rates calculated to write off the cost of the fixed assets, less their estimated residual value, over their expected useful lives on the following bases:

Fixtures, fittings and equipment	10% straight line
----------------------------------	-------------------

Fund accounting

Restricted funds can only be used for particular restricted purposes within the objects of the charity. Restrictions arise when specified by the donor or when funds are raised for particular restricted purposes.

Public benefit entity

The charity meets the definition of a public benefit entity under FRS 102. Assets and liabilities are initially recognised at historical cost or transaction value unless otherwise stated in the relevant accounting policy/note.

Going concern

Based on the monetary assets and human resources available at 31 January 2022, the trustees believe that the charity is a going concern.

VAT

Since the charity is not VAT registered, all input VAT is charged with the expenses to which it refers.

Holford Drive Community Sports Hub Limited

**Notes to the Financial Statements - continued
for the Year Ended 31 January 2022**

2. DONATIONS AND LEGACIES

	2022 £	2021 £
Perry Barr Neighbourhood Network Scheme	3,000	-
The Big Lottery Fund		10,000
English Sports Council Lottery Fund	-	5,000
Donations	-	-
	<u>3,000</u>	<u>15,000</u>

3. CHARITABLE ACTIVITIES COSTS

	Funding of activities £	Totals £
Direct charitable expenditure	-	-
Grants to institutions	<u>5,500</u>	<u>5,500</u>
	<u>5,500</u>	<u>5,500</u>

4. SUPPORT COSTS

	Management £	Governance costs £	Totals £
Other resources expended	<u>29,872</u>	<u>1,500</u>	<u>31,372</u>

Support costs, included in the above, are as follows:

	2022 Other resources expended £	2021 Total activities £
Premises running costs	22,344	20,900
Repairs and renewals	1,478	10,855
Telephone	555	723
Sundry expenses	159	590
Accountancy	1,500	1,500
Professional fees	4,800	7,000
Depreciation	<u>536</u>	<u>536</u>
	<u>31,372</u>	<u>42,104</u>

Holford Drive Community Sports Hub Limited

**Notes to the Financial Statements - continued
for the Year Ended 31 January 2022**

5. TRUSTEES' REMUNERATION AND BENEFITS

During the year ended 31 January 2022 there were no trustee expenses (2021: Nil).

6. TANGIBLE FIXED ASSETS

	Fixtures & Fittings £
COST OR VALUATION	
At 1 February 2021	5,356
Additions	<u>-</u>
At 31 January 2022	<u>5,356</u>
DEPRECIATION	
At 1 February 2021	2,725
Provided during the year	<u>536</u>
At 31 January 2022	<u>3,261</u>
NET BOOK VALUE	
At 31 January 2022	<u><u>2,095</u></u>
At 31 January 2021	<u><u>2,631</u></u>

7. DEBTORS

	2022 £	2021 £
Trade debtors	21,320	10,768
Prepayments and accrued income	5,864	5,909
Other debtors	<u>-</u>	<u>-</u>
	<u><u>27,184</u></u>	<u><u>16,677</u></u>

Holford Drive Community Sports Hub Limited

**Notes to the Financial Statements - continued
for the Year Ended 31 January 2022**

8. CREDITORS: AMOUNTS FALLING DUE WITHIN ONE YEAR

	2022 £	2021 £
Accruals and deferred income	3,119	6,608
Other creditors	-	-
	<u>3,119</u>	<u>6,608</u>

9. MOVEMENT IN FUNDS

	At 1.2.21 £	Net movement in funds £	Transfers between funds £	At 31.1.22 £
Unrestricted funds				
General fund	49,246	5,692	-	54,938
Restricted funds				
SIB fund	8,000	-	-	8,000
England and Wales Cricket Trust	7,560	(3,000)	-	4,560
BCC – ground maintenance	4,000	(2,500)	-	1,500
English Sports Council Lottery Fund	-	-	-	-
Perry Barr Neighbourhood Network Scheme	-	3,000	-	3,000
TOTAL FUNDS	<u>68,806</u>	<u>3,192</u>	<u>-</u>	<u>71,998</u>

Net movement in funds, included in the above are as follows:

	Incoming resources £	Resources expended £	Gains and losses £	Movement in funds £
Unrestricted funds				
General fund	37,064	(31,372)	-	5,692
Restricted funds				
SIB fund	-	-	-	-
England and Wales Cricket Trust	-	(3,000)	-	(3,000)
BCC – ground maintenance	-	(2,500)	-	(2,500)
English Sports Council Lottery Fund	-	-	-	-
Perry Barr Neighbourhood Network Scheme	3,000	-	-	3,000
TOTAL FUNDS	<u>40,064</u>	<u>(36,872)</u>	<u>-</u>	<u>3,192</u>

10. CONTINGENT LIABILITIES

As at 31 January 2022 there were no contingent liabilities (2021: Nil).