

# THE PHOENIX PROJECT

ANNUAL REPORT  
FOR 2021



Charity no. 1153748

Photo from  
Summer Exhibition



funded  
through



  
Department for  
Digital, Culture,  
Media & Sport

In partnership with

THE NATIONAL LOTTERY  
COMMUNITY FUND



SUFFOLK  
Community  
Foundation



# THE PHOENIX PROJECT 2021

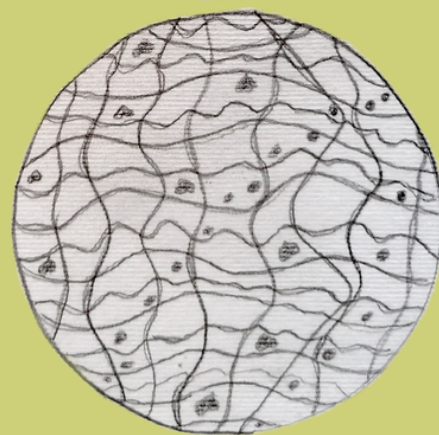
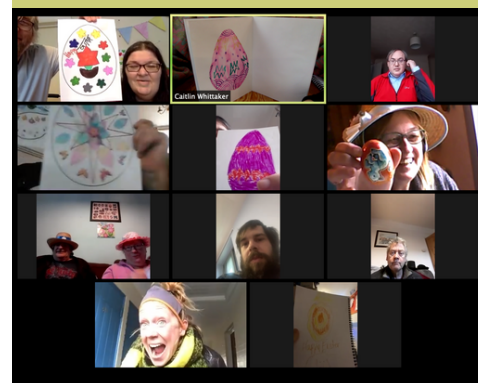
## Lockdown #3 + Staying Connected *Jan 2021*

2021 started with the third lockdown, the Phoenix Project continued to maintain contact and support through these challenging times via texts, phone calls, newsletters and door step visits. This was of vital importance for those living alone and not able to join us online.

Our well-established Facebook group and weekly online meetings provided valuable connection and personal support. We created content for True Thoughts radio show, music playlists, poetry, art and film which reflected personal experiences of these times and gave opportunity for creative expression, helping people to improve and maintain their wellbeing.

## Mindful Making Creative Online Project *Jan - March 2021*

The Mindful Making online workshops provided additional wellbeing support through the use of creative media. People felt less isolated through engaging with regular activity, developing friendships and support networks and feeling part of a supportive community. Participants developed technical skills that increased confidence with digital technology and media which also helped people to connect with the wider world.





## **Starting to meet face to face** *March - Sept 2021*

The end of March saw some gradual easing of lockdown restrictions. We were able to meet outdoors in small groups, of particular value to those who couldn't access our social media platforms.

In the early Summer we held small outdoor acoustic music sessions in the garden of The Quakers Meeting House and in August we held our exhibition in The Central Library in Ipswich, showcasing all the creative work created by our members since the first lockdown in March 2020, a very proud moment for all!

## **Phoenix Club Reopening** *August 2021*

By the end of the Summer, the Phoenix Club was able to open its doors again to welcome back members, staff and volunteers who worked very hard to ensure that face to face support could resume whilst keeping everyone safe. We worked in partnership with Human Us to provide digital support drop-in sessions to help to improve skills and confidence with digital devices. We also held some more acoustic workshops which have always been popular at the club.

## **Support from ICM**

Throughout the last year we have continued to work in close partnership with Ipswich Community Media, their support and expertise has really enhanced the opportunities for engagement for all our members, working together to tackle social isolation and improve mental wellbeing during these most challenging of times.

**DONNA GARROD**

Project Organiser / Facilitator



It's been so rewarding working with the Phoenix Project in 2021 – the exhibition in August was definitely a highlight of the year! It was great to have a group to work with every week online in February and March (Mindful Making) keen to take part in creative activities and willing to try out a variety of approaches to making art work. It was lovely to see everyone's work on display in our online gallery – a collection of drawings, collages, map making and mark making – and it was great that we could stay connected with each other in between sessions via the facebook group.

The **Mindful Making Creative Challenge** we set for the wider group, shared via a printed **Newsletter**, brought out so much incredible creative work. Paintings, writings, photos, sculptures and other hand made objects by group members were gathered together from across town and prepared for exhibiting upstairs in the Ipswich Library.

Getting ready for the exhibition was a mammoth team effort. It was so utterly worth it to see such a great display of creativity communicating, amongst other things, many 'true thoughts' about the lived experience of mental health. To see the group's work in a lovely, light gallery space on big canvases, on little foamex boards and in proper frames was a joy and hopefully signalled to group members that their work, their words and pictures, their creativity are valued and important. I feel this exhibition really spoke to people and struck a chord, particularly with those who may have, at some point in their lives, experienced mental health struggles themselves.

## MICHELLE BRACE

Project Facilitator

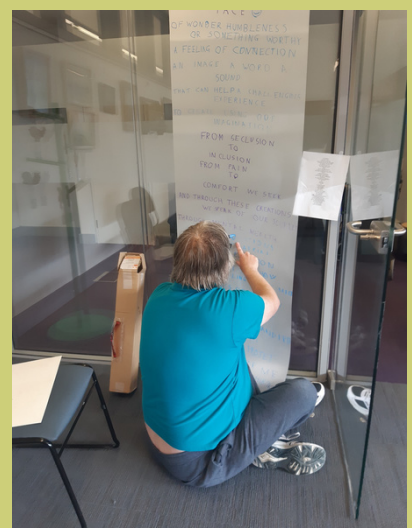
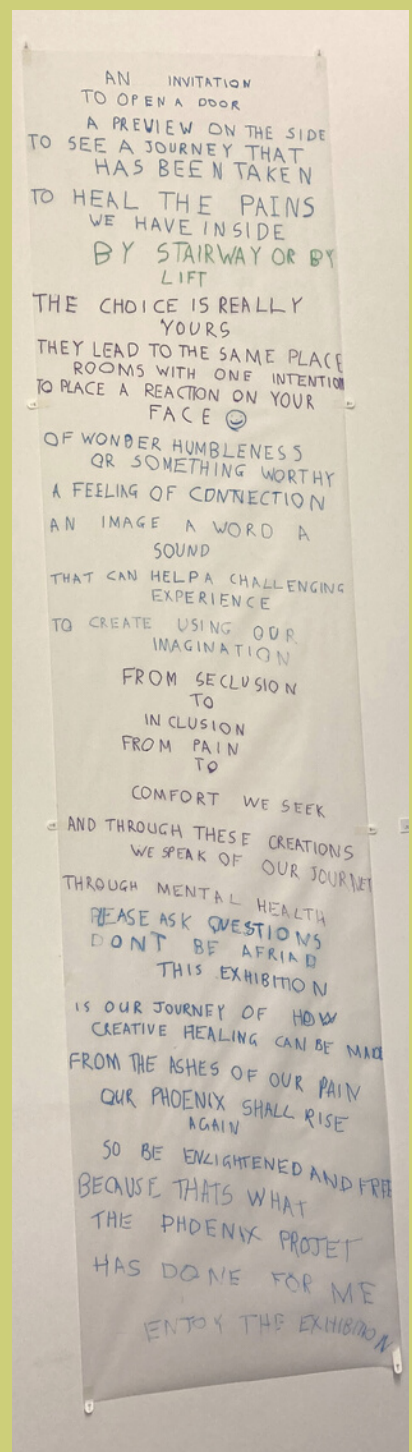
This past year has been a difficult one for everyone but I'm so proud of how much we achieved and how the group continued to be creative and supportive. The summer exhibition was a highlight and something I think we definitely want to do again, from the vast amount of work that was created, to the production team setting up the gallery.

In September I facilitated a **Digital Skills** drop-in clinic which adapted to individual needs every week. It really highlighted the digital divide, with issues ranging from banking apps to online accounts.

## CAITLIN WHITTAKER

Technical Support and Project Facilitator

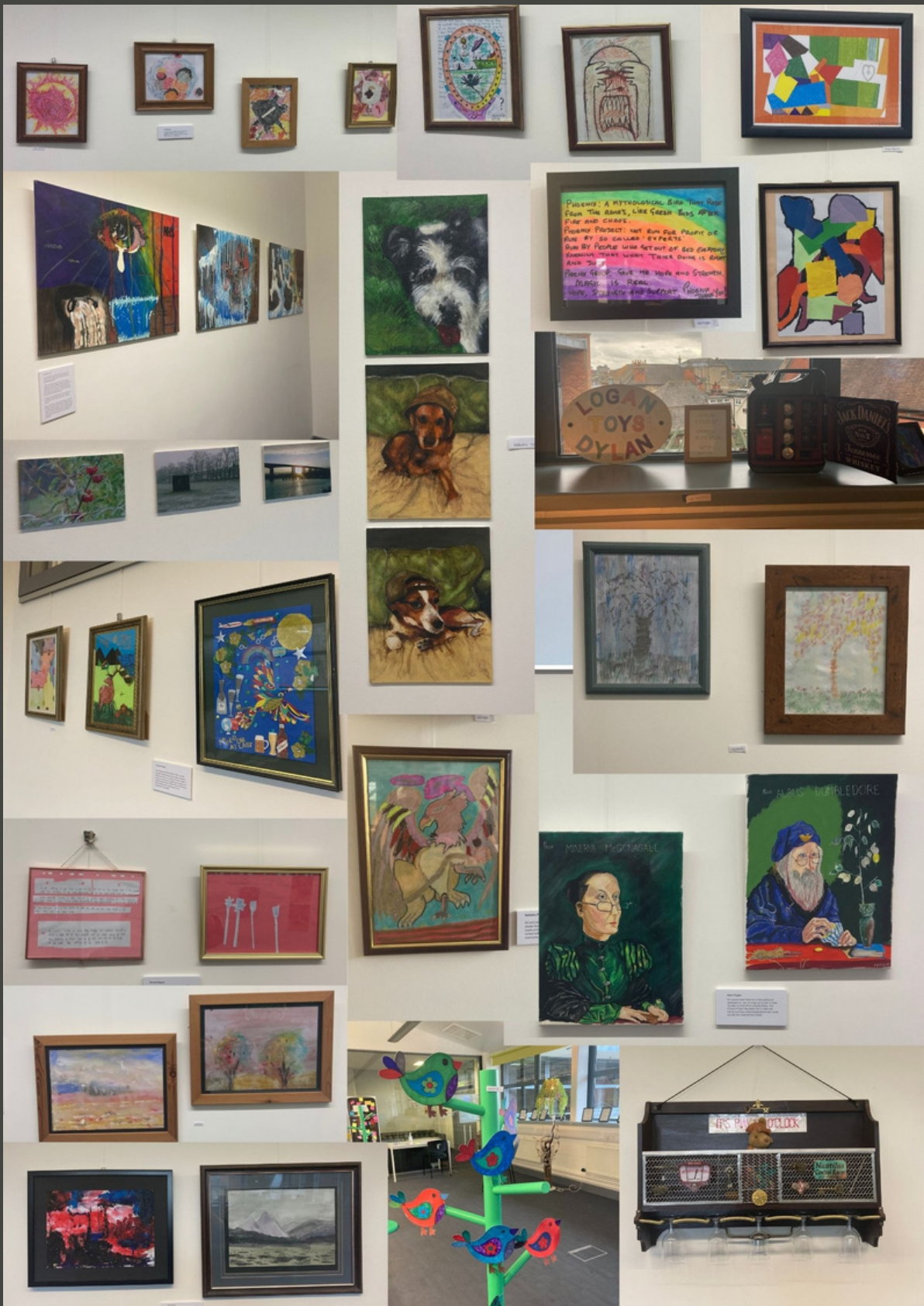
## Jeremy's Poem





# ARTWORKS FROM THE PHOENIX PROJECT EXHIBITION

August 2021 at Suffolk County Library



---

My name is Treacy and I am blessed to hold three roles within the Phoenix Project. Firstly as chairperson of the trustees, secondly as a volunteer and thirdly as a member of the phoenix project. Whilst I really enjoy being chair of the trustees, for me the most important of my roles are as a member and volunteer. As a member and volunteer I feel privileged to be part of an all inclusive group, a family. Other members and volunteers make me feel a part of something very special. Because of the support I receive from those at the project, I know that whether it is a good day or a bad day I will be accepted and supported.

I have been with the phoenix project for six years now and it has become a very important part of my life. The Phoenix Project offers help, support and friendship – we are a project that welcomes anyone who comes through our doors. Along with help, support and advice we offer a very reasonably priced nourishing hot meal on a Friday which is served at 12 and hope to restart our Phoenix Friends group on alternate Tuesdays 11-1 in the near future. Several times a year we also offer different courses from information and technology to arts/crafts and music to mention a few. Covid has had a profound effect on everyone but especially on those with mental health conditions. During lockdown we were unable to meet up as usual but kept in touch with members through zoom, phone calls, texts and when possible socially distanced meet-ups. I look forward to many more years of being not only a trustee but a volunteer and member of the Phoenix Project.

## TREACY

Chairperson of the trustees, volunteer and member

---

I am extremely proud of True Thoughts Radio, and everything that we have achieved over the years – hundreds of radio shows and confidence, stories and positive sharing of experiences to help others in recovery or just a way to remind ourselves we are not alone.

When Donna asked me last year if I would like to be a trustee for Phoenix, I leapt at the opportunity. I was sure I could help bring ideas, partners and potential funding ideas to the table. I love the Phoenix club, the team, the people that come, and the ethos. Bringing people together, eating, talking, creating things, supporting our wellbeing, generally having fun etc whilst also being able to open our hearts to each other when we need to, well, it all sounded good to me.

Mindful Making

Spring collages





Lockdown was obviously an extremely challenging time for everyone, the club wasn't open, projects were not running, so everyone should feel proud to just get through this really difficult time, we all missed each other and had to navigate a new world.

But, for some time, there were surprising and unexpected positives! Winston is a brilliant artist, a writer and a radio presenter, lockdown meant he was stuck in a flat in Ipswich and not able to get to all his weekly appointments such as, church, the club, the library etc. This was really testing, so we would make sure that we visited Winston regularly to check up and take food round.

One day I was at home working when I got a call from an unknown answer, I picked up and to my enormous surprise it was WINSTON! He had managed to get a phone, get some credit, and make a call – this was an absolute first and I was so excited to tell Caitlin, Donna & John. Well, it wasn't long before Winston had not only nailed the art of calling, but he was in full swing with sending a text! It's hard to express how exciting this is, especially because at some level this is all so normal to many people, but it is very intimidating if you haven't had to do it before.

Many of you know that Winston is a radio addict! He listens all day, including many of the local shows on BBC Suffolk, but a few in particular are his favourites – Foz and Nick Risby, who does the late show – well, before too long Winston had learnt to text these shows and be able to request music – Nick loved getting messages from Winston and even had him a few times choose the FAB FIVE tracks for the nights show.

I see this as one of the great outcomes of a miserable time, making Winston more in touch, even though he was still stuck at home. Winston even managed to teach himself how to take photos on the phone and record the songs that he had written! Well done Winston – we are all proud of you!

**CAD TAYLOR**

Trustee and supporter

## A LOCKDOWN SUCCESS STORY



# INCOME RECEIVED FOR FINANCIAL YEAR 2020/2021

National Lottery Community Fund – Local Connections	£2,500
Suffolk Community Foundation – Reviving Our Communities	£5,000
Ipswich Borough Council – Community Cash	£2,500
People's Health Trust – Active Communities	£15,580
<b>TOTAL</b>	<b>£25,580</b>

**Thank you to all our funders for their support.**

Phoenix Trustees:

Treacy Corbett (Chair)

Malcolm Exworth (Treasurer)

Cad Taylor (Secretary)

Robert Rainbird

Many thanks from all at the Phoenix Project to Sue Poole, who stepped down this year as a Trustee, after nearly 12 years as our secretary.





I certify that these are a true and accurate position of the acc  
(Ipswich ) Project as at 31st March 2021

Signed: M. Exworth  
Name: MALCOLM EXWORTH  
Position: Treasurer and Trust

### ounts for The Phoenix

20



# PHOENIX PROJECT INCOME AND EXPENDITURE 2020/21

## GENERAL PHOENIX (NON-RESTRICTED ACCOUNT )

balance b/f from previous year	£3,877.95		
INCOME	£	EXPENDITURE	£
Income from service users and catering	0.00	Room Hire	0.00
Donations	0.00	Sessional work	0.00
Raffle	0.00	Catering Expenses	0.00
Tombola	0.00	Stationery	52.02
		Costs of Governance	190.00
		Equipment	0.00
		Service Users Activities	0.00
		Phone	155.00
		True Thoughts	0.00
<b>total income</b>	<b>0.00</b>	<b>total</b>	<b>397.02</b>
Balance of account as at 29th March 2021	3480.93		

## LOCAL CONNECTIONS-LOTTERY FUND (RESTRICTED ACCOUNT )

balance b/f from previous year	0.00		
INCOME	£	EXPENDITURE	£
total income	2500.00		1435.20
Balance of account as at 29th March 2021	1064.80		

## SUFFOLK COMMUNITY FUND LOTTERY (RESTRICTED ACCOUNT )

balance b/f from previous year	0.00		
INCOME	£	EXPENDITURE	£
total income	5000.00		0
Balance of account as at 29th March 2021	5000.00		

## RESTRICTED ACCOUNT (SOCIAL GROUP)

balance b/f from previous year	385.65		
INCOME		EXPENDITURE	
From Phoenix Friends	0.00	Service User Activity	0.00
		Room hire	0.00
		Craft Supplies	19.36
		Catering Expenses	0.00
<b>total</b>	<b>0.00</b>	<b>total</b>	<b>19.36</b>
Balance of account as at 29th March 2021	366.29		

## IPSWICH BOROUGH COUNCIL (Restricted Account )

balance b/f from previous year			
INCOME	2500.00	EXPENDITURE	
		Room Hire	0.00
		Sessional work	2400.00
		Phone	100.00
<b>total</b>	<b>2500.00</b>	<b>total</b>	<b>2500.00</b>
Balance of account as at 29th March 2021	0.00		

## PORT COMMUNITY FUND (Restricted Account )

balance b/f from previous year			
INCOME	0.00	EXPENDITURE	
		Room Hire	0.00
		Sessional work	0.00
<b>total</b>	<b>0.00</b>	<b>total</b>	<b>0.00</b>
Balance of account as at 29th March 2021	0.00		

## TRUE THOUGHTS (Restricted Account )

balance b/f from previous year	3005.76		
INCOME	15580.00	EXPENDITURE	
		Stationery	261.35
		Sessional Work	13855.48
		Publicity	0.00
		Volunteer expenses	0.00
		Venue Hire	0.00
		website	0.00
		laptops	0.00
		project management	1120.00
		Refreshments	0.00
<b>total</b>	<b>18585.76</b>	<b>total</b>	<b>15236.83</b>
Balance of account as at 29th March 2021	3348.93		

## SUFFOLK GIVING (Restricted Account)

balance b/f from previous year	500.00		
INCOME		EXPENDITURE	
	0.00		500.00
total	0.00	total	500.00
Balance of account as at 29th March 2021	0.00		
TOTAL OF ALL ACCOUNTS			
INCOME	25580.00	EXPENDITURE	20088.41
BALANCE B/F from 2019/20	7769.36		
BALANCE OF ALL ACCOUNTS AS AT 29th MARCH 2021	£13,260.95		

13260.95

BANK AT 27th JANUARY 2014	7748.44
BALANCE OF ACCOUNTS 27th JANUARY 2014	7755.35
BANK IN EXCESS OF BALANCE OF ACCOUNTS	-6.91
Normal adjustment bank too low by £6.91	
BALANCE ACHIEVED !!!!	

BANK AT 19th NOVEMBER 2013	£	10406.23
BALANCE OF ACCOUNTS 15TH NOVEMBER 2013		10413.14
BANK IN EXCESS OF BALANCE OF ACCOUNTS		-6.90999999999985
OUTSTANDING CHEQUES (		
MONEY NOT YET BANKED ( )		
OVERALL ADJUSTMENT I.e.bank too high or accounts too low		0
Chasing		
Total adj (too little paid in )on income side CORRECTION FROM 2011/12		0.99
		6.02 too little -0.10 too much paid in on
Total adj (too little paid in )on income side CORRECTION FOR THIS YEAR		5.92 1/3/2013
BALANCE ACHIEVED !!!!		
NB A/c's SHOW ROOM HIRE AS £2 LESS THAN IT SHOULD BE AS CHEQUE TO QUAKERS WRONG WAS WRITTEN OUT FOR £1050 BUT SHOULD HAVE BEEN £1052 AWAIT RESPONSE FROM QUAKERS		

BANK AT 14th AUGUST 2013	£	12457.31
BALANCE OF ACCOUNTS 24th SEPTEMBER 2013		11019.65
BANK IN EXCESS OF BALANCE OF ACCOUNTS		1437.66
OUTSTANDING CHEQUES (		2118
MONEY NOT YET BANKED ( )		673.43
OVERALL ADJUSTMENT I.e.bank too high or accounts too low		1444.57
Chasing		
Total adj (too little paid in )on income side CORRECTION FROM 2011/12		0.99
		6.02 too little -0.10 too much paid in on
Total adj (too little paid in )on income side CORRECTION FOR THIS YEAR		5.92 1/3/2013

Adjustments as at 31st March 2012	£	
Pathfinder (cheque not yet cashed )		68.00
Room Hire Feb(cheque not yet cashed )		160.00
Session fee March(cheque not cashed )		375.00
Total cheques not cashed		603.00
Income not yet paid in		64.13
Cash Deposit adjustments		
extra 10p deposited 23/7/2011 in error		0.10
paid in £1.00 too little on 29/10/2011		1.00
Paid in 0.09 too little 29/3/2012		0.09
Total adj (too little paid in )		0.99
Total adj on income side		65.12
Bank in excess of ac (603.00-65.12)		537.88
BALANCE ACHIEVED !!		

BANK AT 31st MARCH 2013	£	
BALANCE OF ACCOUNTS 31st March 2013		
BANK IN EXCESS OF BALANCE OF ACCOUNTS		
OUTSTANDING CHEQUES(room hire 160+16path+750 sess)		
MONEY NOT YET BANKED (53.06+124.45)		
OVERALL ADJUSTMENT I.e.bank too high or accounts too low		
Chasing		2781.37
Total adj (too little paid in )on income side CORRECTION FROM 2011/12		2039.79
Total adj (too little paid in )on income side CORRECTION FOR THIS YEAR		741.58
748.49=741.58+0.99+5.92 SO BALANCE ACHIEVED !!!		
		926.00
		177.51
		748.49
		6.91
		0.99
		5.92

BANK AT 22nd MAY 2013		
BALANCE OF ACCOUNTS 31st May 2013		
BANK IN EXCESS OF BALANCE OF ACCOUNTS		
OUTSTANDING CHEQUES (375+375)		
MONEY NOT YET BANKED ( 70.81)		
OVERALL ADJUSTMENT I.e.bank too high or accounts too low	£	
Chasing		3182.52
Total adj (too little paid in )on income side CORRECTION FROM 2011/12		12861.78
Total adj (too little paid in )on income side CORRECTION FOR THIS YEAR		-9679.26



1444.57=1437.66+6.91  
SO BALANCE ACHIEVED !!!

BANK AT 10th JUNE 2013	£	12507.49
BALANCE OF ACCOUNTS 19th JULY 2013		13260.95
<b>BANK IN EXCESS OF BALANCE OF ACCOUNTS</b>		<b>-753.46</b>

OUTSTANDING CHEQUES (	740.00
MONEY NOT YET BANKED ( )	1087.38
OVERALL ADJUSTMENT I.e.bank too high or accounts too low	-347.38
Closing	-406.08
<b>Total adj (too little paid in )on income side CORRECTION FROM 2011/12</b>	<b>0.99</b>

	6.02 too little -0.10 too much paid in on 1/3/2013
<b>Total adj (too little paid in )on income side CORRECTION FOR THIS YEAR</b>	<b>5.92</b>

354.29=347.38+0.99+5.92 SO BALANCE ACHIEVED !!!

679.19=672.28+0.99+5.92

750

70.81

679.19

-10358.45

0.99

6.02 too little -0.10 too much paid in on 1/3/2013

5.92

6.02 too little -0.10 too much paid in on 1/3/2013

**PHOENIX INCOME 2020/21**[illegible]

0.00

2500.00

5000.0

0.0

2500.0

0.0

15580.

25580.0



## PHOENIX INCOME SUMMARY 2020/21

<b>GENERAL PHOENIX (non-restricted)</b>	
Friday Receipts	
Market Stall	
Donations	
Raffle	
Quiz Night / Karaoke	
Tombola	
Massage	
	<b>total income</b>

<b>LOCAL CONNECTS - LOTTERY FUND ( restricted )</b>	
	<b>total income</b>

<b>SUFFOLKCOMMUNITY FUND LOTTERY (restricted )</b>	
	<b>total income</b>

<b>SOCIAL GROUP (Restricted )</b>	
	<b>total income</b>

<b>IPSWICH BOROUGH COUNCIL (Restricted )</b>	
	<b>total income</b>

<b>PORT COMMUNITY FUND (Restricted )</b>	
	<b>total income</b>

<b>SUFFOLK GIVING (Restricted )</b>	
	<b>total income</b>

<b>TRUE THOUGHTS (Restricted )</b>	
	<b>total income</b>

<b>TOTAL INCOME ( All Accounts excl transfers)</b>	
----------------------------------------------------	--

£

0.00
0.00
0.00
0.00
0.00
0.00
0.00
0.00
0.00

2500.00
---------

5000.00

0.00

2500.00

0.00

0.00

15580.00

25580.00
----------



**PHOENIX EXPENDITURE 2020/21**[illegible]

## PHOENIX EXPENDITURE SUMMARY 2020/21

<b>GENERAL PHOENIX (non-restricted)</b>
Sessional Work
Room Hire
Catering Expenses
Governance Costs
Phone
Stationery
Equipment
True Thoughts
Service User Activities
<b>TOTAL GENERAL PHOENIX (non-restricted)</b>

<b>LOCAL CONNECTIONS -LOTTERY FUND (restricted )</b>

<b>TOTAL LOCAL CONNECTIONS-LOTTERY FUND (restricted )</b>
-----------------------------------------------------------

<b>SOCIAL GROUP (Restricted )</b>
Service User Activities
Room Hire
Catering Expenses
Craft Supplies
<b>TOTAL SOCIAL GROUP (Restricted )</b>

<b>IPSWICH BOROUGH COUNCIL (Restricted )</b>
<b>Phone</b>
Room Hire
Sessional Work
<b>TOTAL IPSWICH BOROUGH COUNCIL (Restricted )</b>

<b>PORT COMMUNITY FUND (Restricted )</b>
Room Hire
Sessional Work
<b>TOTAL PORT COMMUNITY FUND (Restricted )</b>

<b>SUFFOLK GIVING (Restricted)</b>
For True Thoughts
<b>TOTAL SUFFOLK GIVING</b>

<b>TRUE THOUGHTS (Restricted )</b>
Sessional Work
Publicity
Volunteer Expenses
Venue Hire
Website
Laptops
Project Management

Stationery
Refreshments
Events
<b>TOTAL TRUE THOUGHTS</b>

<b>TOTAL OF ALL EXPENDITURE</b>
---------------------------------



0.00
0.00
0.00
190.00
155.00
52.02
0.00
0.00
0.00
<b>397.02</b>

--

<b>1435.20</b>
----------------

<b>1435.20</b>
----------------

0.00
0.00
0.00
19.36
<b>19.36</b>

100.00
0
2400.00
<b>2500.00</b>

0.00
0.00
<b>0.00</b>

500.00
<b>500.00</b>

13855.48
0.00
0.00
0.00
0.00
0.00
1120.00

261.35
0.00
0.00
<b>15236.83</b>

<b>20088.41</b>
-----------------

# PHOENIX PROJECT BANK STATEMENT

[illegible]

NB There will be a disparity between the Lloyds Bank balance and with the income/expenditure figures as there is a time delay between cheques being written and them appearing on the bank statement.  
The same also applies to income.

**bf+deposits-payments balances in bank account**  
**17722.51**

### **Bank Reconciliation as at 19th March 2021**

[illegible]



	<b>17722.51</b>
£	
	<b>£0.00</b>
£	
£30.00	
£300.00	
£36.36	
£1,880.00	
£1,680.00	
£300.00	
£195.20	
£40.00	
	<b>£4,461.56</b>
	<b>£13,260.95</b>
	<b>£13,260.95</b>
	<b>£0.00</b>

--	--

## Section A Receipts and Payments

**Unrestricted Funds    Restricted Funds    Endowment Funds    Total Funds**

### A1 Receipts

<b>Income from Service Users</b>	<b>3572</b>			<b>3572</b>
<b>Grants and Donations</b>	<b>115</b>	<b>14348</b>		<b>14463</b>
<b>Raffles and tombolas</b>	<b>351</b>			<b>351</b>
<b>Sub total</b>	<b>4038</b>	<b>14348</b>		<b>18386</b>
<b>Total Receipts</b>	<b>4038</b>	<b>14348</b>		

### A3 Payments

<b>Room Hire</b>	<b>206</b>	<b>2001</b>		<b>2207</b>
<b>Staff wages</b>	<b>2494</b>	<b>7331</b>		<b>9825</b>
<b>Catering costs</b>	<b>1891</b>	<b>240</b>		<b>2131</b>
<b>Stationery/Admin costs</b>	<b>57</b>	<b>98</b>		<b>155</b>
<b>Governance Costs</b>	<b>178</b>	<b>0</b>		<b>178</b>
<b>Equipment</b>	<b>0</b>	<b>1733</b>		<b>1733</b>
<b>Service User Activities</b>	<b>10</b>	<b>3</b>		<b>13</b>
<b>Telephone charges</b>	<b>20</b>	<b>0</b>		<b>20</b>
<b>True thoughts</b>				<b>0</b>
<b>Publicity and Marketing</b>	<b>0</b>	<b>0</b>		<b>0</b>
<b>Volunteer Expenses</b>	<b>0</b>	<b>0</b>		<b>0</b>
<b>Website</b>		<b>144</b>		<b>144</b>

<b>Sub total</b>	<b>4856</b>	<b>11550</b>	<b>16406</b>
<b>Total Payments</b>	<b>4856</b>	<b>11550</b>	<b>16406</b>
<b>Net of receipts/(payments)</b>	<b>-818</b>	<b>2798</b>	
<b>A5 Transfers between funds</b>	<b>-689</b>	<b>689</b>	
<b>A6 Cash funds last year end</b>	<b>4696</b>	<b>405</b>	
<b>Cash funds this year end</b>	<b>3878</b>	<b>3891</b>	

## Section B Statement of assets and liabilities at the end of the period

	<b>Unrestricted funds</b>	<b>Restricted funds</b>
<b>B1 Cash Funds</b>		
	<b>Lloyds Bank</b>	
	<b>3878</b>	<b>3891</b>
<b>Total cash funds</b>	<b>3878</b>	<b>3891</b>



**Last Year**

<b>4582</b>
<b>4070</b>
<b>8652</b>

<b>8652</b>
-------------

<b>3738</b>
<b>16104</b>
<b>2022</b>
<b>158</b>
<b>552</b>
<b>0</b>
<b>1014</b>
<b>20</b>
<b>173</b>
<b>149</b>
<b>35</b>



23965

23965

-23965

0

5101



## Section A Receipts and Payments

**Unrestricted Funds    Restricted Funds    Endowment Funds    Total Funds**

### A1 Receipts

<b>Income from Service Users</b>	<b>0</b>			<b>0</b>
<b>Grants and Donations</b>	<b>0</b>	<b>25580</b>		<b>25580</b>
<b>Raffles and tombolas</b>	<b>0</b>			<b>0</b>
				<b>0</b>
				<b>0</b>
<b>Sub total</b>	<b>0</b>	<b>25580</b>		<b>25580</b>
<b>Total Receipts</b>	<b>0</b>	<b>25580</b>		<b>25580</b>

### A3 Payments

<b>Room Hire</b>				<b>0</b>
<b>Staff wages</b>		<b>18190</b>		<b>18190</b>
<b>Catering costs</b>				<b>0</b>
<b>Stationery/Admin costs</b>	<b>52</b>	<b>280</b>		<b>332</b>
<b>Governance Costs</b>	<b>190</b>			<b>190</b>
<b>Equipment</b>				<b>0</b>
<b>Service User Activities</b>				<b>0</b>
<b>Telephone charges</b>	<b>155</b>	<b>100</b>		<b>255</b>
<b>True thoughts</b>		<b>1120</b>		<b>1120</b>
<b>Publicity and Marketing</b>				<b>0</b>
<b>Volunteer Expenses</b>				<b>0</b>
<b>Website</b>				<b>0</b>

<b>Sub total</b>	<b>397</b>	<b>19690</b>	<b>20087</b>
<b>Total Payments</b>	<b>397</b>	<b>19690</b>	<b>20087</b>
<b>Net of receipts/(payments)</b>	<b>-397</b>	<b>5890</b>	
<b>A5 Transfers between funds</b>	<b>0</b>	<b>0</b>	<b>0</b>
<b>A6 Cash funds last year end</b>	<b>3878</b>	<b>3891</b>	<b>7769</b>
<b>Cash funds this year end</b>	<b>3481</b>	<b>9779</b>	<b>13260</b>

## **Section B Statement of assets and liabilities at the end of the period**

	<b>Unrestricted funds</b>	<b>Restricted funds</b>
<b>B1 Cash Funds</b>		
	<b>Lloyds Bank</b>	
	<b>3481</b>	<b>9779</b>
<b>Total cash funds</b>	<b>3481</b>	<b>9779</b>



**Last Year**

3572
14463
351
18386

18386
-------

2207
9825
2131
155
178
1733
13
20
0
0
0



16406

16406

0

5101

**INDEPENDENT EXAMINER'S REPORT TO THE TRUSTEES OF**  
**PHOENIX PROJECT IPSWICH**  
**CHARITY NO: 1153748**

I report on the accounts for the year ended 31 Mar 21.

**Respective responsibilities of trustees and examiner**

The trustees are responsible for the preparation of the accounts. The charity's trustees consider that an audit is not required for this year under section 144(2) of the Charities Act 2011 (the 2011 Act)) and that an independent examination is needed.

It is my responsibility to:

- Examine the accounts under section 145 of the 2011 Act;
- to follow the procedures laid down in the General Directions given by the Charity Commissioners under section 145(5)(b) of the 2011 Act; and
- to state whether particular matters have come to my attention.

**Basis of independent examiner's report**

My examination was carried out in accordance with the General Directions given by the Charity Commission. An examination includes a review of the accounting records kept by the charity and a comparison of the accounts presented with those records. It also includes consideration of any unusual items or disclosures in the accounts, and seeking explanations from the trustees concerning any such matters. The procedures undertaken do not provide all the evidence that would be required in an audit, and consequently no opinion is given as to whether the accounts present a 'true and fair view' and the report is limited to those matters set out in the statement below.

**Independent examiner's statement**


In the course of my examination, no matter has come to my attention:

(1) which gives me reasonable cause to believe that in any material respect the requirements:

- to keep accounting records in accordance with section 130 of the 2011 Act; and
- to prepare accounts which accord with the accounting records and comply with the accounting requirements of the 2011 Act

have not been met; or

(2) to which, in my opinion, attention should be drawn in order to enable a proper understanding of the accounts to be reached.

Signed:   
C L Bartram MAAT  
20 Woolner Close  
Hadleigh  
Suffolk  
IP7 5SY

Dated: 5 Oct 21