



# THE PAROCHIAL CHURCH COUNCIL OF THE ECCLESIASTICAL PARISH OF HILLSIDE

(ALL SAINTS, LOBLEY HILL and St CUTHBERTS, MARLEY HILL)

REGISTERED CHARITY NUMBER 1153663

ANNUAL REPORT  
INCLUDING FINANCIAL STATEMENTS  
YEAR ENDED 31<sup>st</sup> DECEMBER 2024

The Parochial Church Council of Hillside (PCC) presents its annual report along with the financial statements of the charity for the year ended 31<sup>st</sup> December 2024. The financial statements have been prepared based on the accounting policies set out in note 1 to the financial statements.

### **AIM AND PURPOSES**

Hillside PCC has the responsibility of co-operating with the incumbent, the Reverend Glen MacKnight, in promoting within the ecclesiastical parish the whole mission of the Church, pastoral evangelistic, social and ecumenical.

### **OBJECTIVES AND ACTIVITIES**

The PCC is committed to enabling as many people as possible to worship at our churches and to become part of our parish community at Hillside. The PCC maintains an overview of worship throughout the parish and makes suggestions on how our services can involve the many groups that live within our parish. Our services and worship put faith into practice through prayer and scripture, music and sacrament.

### **PUBLIC BENEFIT**

When planning activities for the year, the incumbent and the PCC have considered the Charity Commissions guidance on public benefit and, in particular, the specific guidance on charities for the advancement of religion. In particular, we try to enable ordinary people to live out their faith as part of our parish community through:

- Offering people, the opportunity to gather for worship, prayer and teaching at a range of services and meetings throughout the week;
- providing pastoral care in a variety of ways e.g. visiting the sick, supporting those with special needs, providing help and advice at times of birth, marriage, and bereavement;
- offering programmes of teaching to young people in conjunction with relevant events and activities;
- promoting and supporting partnerships with churches, organisations and people involved in the faith, love and hope of Christ in action at home and abroad;
- providing facilities for the use of voluntary organisations within the locality;
- active participation in local events and voluntary work within our community.

## **ACHIEVEMENTS AND PERFORMANCE**

Recently I was in a shop I won't say what kind of shop but I was hungry. As I closed in on the counter and all it had to offer in the form of sweet and savoury I noticed a leather bound black book. *"Is that a Bible?"* I asked. *"It is"* came an upbeat reply.

We began to talk as others came in the shop, were served and left. Our discussion roamed across the foibles of the church and what did I make of Romans chapter 7? I thought of making an origami swan but resisted saying so. This person was in earnest and needed to give me a 'good telling' with regards to holiness and righteousness. I wasn't averse to what they had to say, somethings we all need to hear again and again to grasp afresh what God has done through Christ Jesus our Lord. The part that troubled me was that they didn't belong to any group of believers at least not in the flesh. The church was a disappointment so they followed a range of predominately American pastors online, who were able to speak truth without being troubled by 'church.' Theirs was a spirituality that existed in a rarefied atmosphere of self-inflicted purity. It's difficult to challenge someone who has jumped out of the world and ask them to jump back into the mess of people's lives and say. *"Let's walk this path together."* But isn't that what we are called to do – to walk together, Get Involved Together and follow Him as disciples.

Stanley Hauerwas an American Theologian writes:

*"The church is where the stories of Israel and Jesus are told, enacted, and heard, and as a Christian people there is literally nothing more important we can do. But the telling of that story requires that we be a particular kind of people, if we and the world are to hear the story truthfully."* (Jesus Changes Everything). Hauerwas continues by saying ".....the world needs the church because without the church the world does not know what it is nor who God is."

Hillside Church is such an expression of the body of Christ in the world. Of course we are not alone as the Friends from Overseas Drop-in demonstrates. Three Churches working together to promote peace and justice. We have given support in respect of the Home Office, offered practical support and over the year seen further baptisms in the warm summer air of our All Age Services.

We have sought to proclaim Christ in all aspects of Church life as this report shows. We do that through buildings that are fit for purpose as Gill and Alan work with grant awarding bodies, through welcoming the Primary school as well as working into the school where Nicola is taking a lead. Also the ongoing work of Lisa and Louise with our Young Stars to deepen faith and relationship with Our Lord. The dedication of the Youth Leaders through thick and thin.



Messy Church at St Cuthbert's

Then there is the work of caring for those who have experienced loss. This has now extended to a second session over the summer period. A group where so much work is done through supportive texts as well as meeting in a group, where Jacqui, Sheila and Amanda give a careful listening ear. Once the Friday bereavement session is over there is the seamless synergy of moving into the Joshua Tree Cafe, where again mission is at the heart of the volunteers who serve without the prospect of a cheese scone left over.

Our activities do come with a cost primarily bourn by Hillside members through regular giving. Rob as Treasurer advises the PCC as to the monthly situation in our finances. If we wish to *communicate the news of Jesus as Saviour* to people who have yet accept him then two things are prerequisite prayer and finance, both of which involve Generous Giving. *'Lord help us to be cheerful givers.'*

Hot Chocolate on the Street



Christingle with the Community



Someone from another church informed me that the Church of England wasn't very good at giving literature away. I was able to point out that this was not the case for Hillside. Our literature stands, often have be replenished with New Testaments (more latterly some in Persian). As ever more could be done to spread the Good news and we are grateful for all that we are able to do. *'And let us consider how to stir up one another to love and good works,' Hebrews 10:24*

Gill Corner steps down as Church Warden having done so much to ensure that Hillside's activities are undergirded with appropriate levels of Health and Safety amongst many other aspects of her role. Abi as our remaining Church Warden is getting to grips with various aspects of the role while balancing these against her need to earn a living. Alan will remain our designated Safeguarding Lead guiding us through a demanding period as the CofE wrestles with some significant safeguarding failures in the past. The band works hard to help us use songs and hymns to worship God and more latterly through Dorothy, the women have had opportunity to meet together, to go deeper in faith and build one another up in God.

Amanda will shortly be at the end of her curacy and a small group of people recently reflected on the unexpected departure of former curate Dawn Hudson. Time was taken to pray for her.

Please read through the report of a small but vibrant church “.....*the world needs (us) because without the church the world does not know what it is nor who God is.*” This isn’t always face to face but at times a telephone call to someone who can easily feel invisible. The work of Two’s Company offers the comfort of conversation and a reminder that people are not forgotten.

How might you participate in making Christ known? Not everyone is an evangelist or feels comfortable talking about faith, but you can pray and you can give (your offering of yourself and money).

Finally, as brothers and sisters in Christ we join with King Charles III at the Maundy Service, recognising Catharine Howes contribution to seeking the welfare of others.

*‘Love the Lord your God with all your heart and with all your soul and with all your strength and with all your mind; and, love your neighbour as yourself.’* **Luke 10:27**

**God bless  
Rev Glen MacKnight**





## Curate Report



As I look back and reflect on the past year, I am grateful for the opportunities I've had to grow both professionally and spiritually. Beyond Hillside and Watergate Court, I've also had the privilege of contributing to various special services across the Deanery. These experiences have not only broadened my horizons but have also deepened my understanding of pastoral care and community building. In addition to these significant events, the regular Sunday services have been a cornerstone of

communal worship. Each service, with their unique themes and messages, have provided an opportunity for soul-searching and growth, whether it was a solemn remembrance service, or funeral; or the joyous celebrations of Eucharist, Baptism and Weddings, the collective spirit of Hillside and Churches I have served in the Deanery was always evident. Others sermons have been a source of inspiration, encouraging us to live out our faith in practical ways and to be mindful of our responsibilities towards one another and the wider world.

The support of my church family has been a constant source of strength. Their unwavering faith, coupled with their genuine care and concern, has helped me navigate the complexities of curacy life. Whether it was a word of encouragement, a shared prayer, or a simple act of kindness, these gestures have been invaluable. They have reminded me of the importance of community and the impact that collective support can have on an individual's journey.

Looking ahead, I am filled with excitement and anticipation, to continue serving, embracing new challenges, and more opportunities for growth.

In particular, I am eager to deepen my understanding of pastoral care. The experiences of the past year have provided valuable insights, but there is still much to learn. By continuing to engage with the needs of our community and by seeking guidance from more experienced colleagues, I hope to enhance my ability to provide compassionate and effective support.

In conclusion, the past year has been a journey of growth and discovery. The opportunities to serve and the support of my church family have been instrumental in shaping my curacy experience. As we look to the future, I am excited to continue this journey, embracing new challenges and opportunities with faith and enthusiasm. Curacy life is busy, but it is a blessing to serve in such meaningful ways, and I am grateful for every moment.

**Blessings**  
**Reverend Amanda Boyd**

## Churchwarden report

**Another busy year has passed at Hillside. Thank you to everyone who has served in our many and varied Church and Community activities and with the upkeep of our property. We thank God that Hillside is such a busy, evolving Christian community.**

Regular maintenance has been carried out in all three buildings including the boilers, gutters and downpipes, light bulbs, emergency exit lights, fire extinguishers and leaf removal.



At All Saints, following the blockage of the kitchen drain, much somewhat smelly, drain clearing around the site was carried out with the help of good, old fashioned divining rods which enabled a plan to be drawn up of the drains around the site. Following the disposal of its contents a surprisingly emotional farewell was said to the Hillside trailer early one summer morning when it set off bound for Cedarwood Christian Festival. The Bee Garden has been kept in good shape, lawns kept neat and tidy and trees and hedges pruned back.



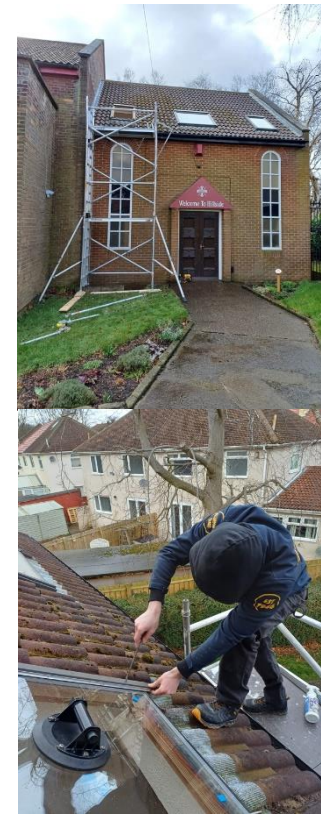
The addition of smart caps to the top of the gateposts and the repair of the main entry thresholds has improved the appearance as you enter Church. It has been a year of electrical lighting with replacement of interior bulbs, the spot fittings in the chancel and the security light at the main entrance. Inside, All Saints' appearance is enhanced with seasonal flower arrangements and meaningful decoration from our All Age Services and young people. It has been kept clean and tidy by volunteers; more help is required with this so please shout out if you feel that God is prompting you to serve in this way.

In these tight financial times, it is a blessing that fundraising through grants has achieved the necessary finance to repair some windows. This being the misted velux panels in the north facing side of the extension and cracked leaded glass in the Bede room where internal polycarbonate sheets will also be installed. This will help to make heating the rooms more efficient. Efforts to raise grants to complete the high level brick and pointing repairs are ongoing.

Hub maintenance included to name but a few, re-felting a section of the roof to prevent water ingress, a fresh coat of paint for the main hall, fixing faulty door handles and making the toy store secure but accessible to those who need to access it with a key safe. The Hub boiler had to be replaced at the end of November, once again God was faithful. Moody's heating company were able to replace it within a week and the Church family responded generously to a call for financial giving.

At St Cuthbert's the new boilers have been more reliable and far less time consuming than the old ones and the new controls make it easier to change the settings. We have been thrilled to open the doors to a Group of Rainbows on a Wednesday evening. This necessitated added child safety requirements but these are also beneficial to the Toddler group and Messy Church. Permanent signs have been installed regarding the unstable gravestones which has saved having to replace the temporary ones which struggled to withstand the strength of Marley Hill winds! Those same winds damaged the roof and guttering last spring and that was eventually fixed under the insurance cover. There is still a leak at a gutter join which the contractor has failed to fix despite repeated requests. This will be attempted by us when there is a dry spell.

It has been an honour to share our buildings with various groups in the last 12 months and it is our prayer that God will enable us to welcome others in the coming year.



**Abi Sanders and Gill Corner**  
Churchwardens

### **Deanery Report** **Gateshead West Deanery**

Our deanery has 10 parishes and stretches as far as Chopwell. One of its roles is to support parishes in vacancy. We still have Dunston, Whickham and Swalwell without vicars/rectors. So our clergy continue to help as needed. Please pray for the Holy Spirit to guide any new



appointments. This could be a great chance for new co-operation between our four parishes.

Children and youth work was the focus of a deanery away day in June. This event was also a chance for deanery reps to get to know each other better. Please pray for ways to work together in the deanery, especially in children and youth work. Nicola Rayson from Dunston finished her training and has been a great blessing with her involvement in our children and youth activities. She is also now involved for us at Lobley Hill Primary School.

After many years of service Susan Marshall has resigned as Lay Chair and is being succeeded by Paul Hobbs. He is an energetic man with a strong focus on mission, so please pray for him as he gets into the new role. Following a successful Deanery Lent Course, we have followed this up with "Faith Habits" for Lent 2025.

Our contribution to running the deanery for 2025 has been paid - the requested £50.

**Catharine Howe (Deanery Synod rep)**

### **Drop in for overseas friends**

*"I love coming to church".* This was what one six year old Moslem child said to me at the drop in. Out of the mouths of babes... Of course he was right - he really was seeing the church in action.

We have been pleased to welcome a great many people from the Embassy Hotel to the Hub in the last year. Our facilities have given them space to relax, socialise, get help and support - very valuable when you are new, living and eating in one room, not sure what will happen next or what you should do. It has been a privilege to partner with City Church (who lead the City Refugee Welcome Project) and Hope Community Church. The drop in closed for a period last year due to low numbers in the hotel. But it was revived when numbers went up and continues to be important for people's mental and physical wellbeing. We will see how things go, as numbers of hotel residents have dipped again recently. Please keep praying for the drop in and for the "overseas friends" who have become part of our worshipping community. It is a privilege to have them among us.

**Catharine Howe**

### **Messy Church**

Messy Church continues to run each month and numbers can fluctuate month on month. In addition to our regular type of activity (Messy crafts) we try to include a prayer focus activity which Dawn had developed previously and was well received.



Nicola Rayson ... children's ministry worker has become a very welcome addition to the leadership of this group and is very keen on hands on experiential learning planning 'wild and whacky,' fun activities ranging from a huge Wall of Jericho.....which was knocked down with great delight allowing the boxes to be reused.....to an even bigger Palm Tree the removal of which is still under head scratching consideration. It's amazing how many biblical teaching opportunities we have found for said tree! Sue Whitehead has also joined the team and her experiences as a teacher are very welcome. One of our regular mums, Vanessa led a session about DNA as we explored all being different yet all made in God's image. It was amazing to explore extracting DNA from strawberries and getting a better understanding of the science behind it. Katrina's "foody" craft continues to be very popular.....children love to eat! Bible account time led by Glen continue to be quite dramatic with the children adding their own brand of laughter and joy.

For the regular group who come along each month I think Messy is still an important part of worship at St Cuthbert's but would love to hear from anyone who has ideas of how to increase the size of the group, advertising other than Fb posting and mail chimp reminder or



even a change of time. Growth does not happen without change and we are open to all suggestions. Messy church takes time and regular commitment and I'm thankful to all those who help make Messy Church an exciting place to meet and minister to our young children.

### SC Toddler Group



Summer and early Autumn 2024 Toddler Group at St Cuthbert's continued to be well attended. However November to December we saw a concerning fall in numbers. As I am in regular contact with several mums who had come for about eighteen months I was able to ascertain that some children had begun preschool/nursery groups taking advantage of government funded places or were attending a parenting course which coincided with our Toddler Group. After the turn of the year we are seeing numbers creeping up with a regular group of five between twelve to eighteen months old. These will be, I pray, our regular parents whose children will move off together to preschool / nursery having formed friendships through our toddler group. Some of these actually live in Marley Hill and one family came to the carol service and February Messy Church.

It was encouraging to see a lady who came with her first child return with her new baby....travelling from Dipton. I post group reminders on several local Fb community sites and have added a poster to the Sunnyside and Marley Hill Community board in the local Co-op, and Courtyard Café. Any ideas for getting the word out will be more than welcome!

Snack time is still the highlight of the session and the children are being encouraged to help tidy the toys away and help putting plates and cups out and their eagerness to be involved is heart-warming. We all enjoy birthdays with cards, cake and candles and a rather unmusical version of Happy Birthday. We have not introduced story time yet due to the age of the group but they all enjoy playing with our set of glove puppets.....Storytime with a puppet seems to be the way to go when the time is right! Personally I cannot wait as no matter I feel I never fail to be uplifted and encouraged as the children learn to play and get along together.....something we could all do with revisiting at times. Jesus called us to become like little children (Matthew 18: 3) and watching all the children involved in Hillside Church is a great blessing.

**Lina Beck**

## Young Stars

(Formerly known as Sunday school!)



Our young members of the congregation have continued to meet for their own time together during our Sunday services. You may have noticed that we are now leaving slightly sooner than we previously did; this is for a number of reasons, which we'd be happy to explain if you want to ask us about it; we are enjoying our own active time of worship before we begin our usual structured session of Bible study and related activities.

Our numbers have fluctuated over the course of the last year as we have welcomed and then said 'goodbye' to new friends whom we've been delighted to have with us whilst they were residents of The Embassy hotel. With this in mind, hopefully by the time of reading, you will have noticed the Young Stars leaders (yes, it is a play on words from 'youngsters'!) wearing T-shirts in the Hillside blue with stick-figure children on the back. We are keen to ensure that all of our visitors, both children and their parents, are aware of who leads the children's work on a Sunday morning, we wanted to be easily identifiable and for that identification to not be reliant upon the ability to read spoken English. We hope that our shirts will help overcome any language barriers, as well as supporting our safeguarding practice and procedures.

We have welcomed Nicola onto our team during recent months, and this has enabled us to split into 2 age groups when we go over to The Hub, allowing us to plan activities which suit differing learning styles.

We look forward to Caitlin joining us on a more regular basis as she completes her Young Leaders training and goes through the safe recruitment process.

We continue to use the Scripture Union materials as the basis of our Bible study, supplemented by some additional seasonal material. We have graduated from the Splash books and have now moved onto using X-Stream and Grid as our main resources books. If you would like to know more about the Scripture Union resources have a look on their website, or chat to one of the team.

Finally, I said this last year, but would like to say again how much we value your prayers for wisdom as we teach and guide these young minds, and for the deepening of the children's faith and their relationship with Our Lord.

**Louise, Lisa & Nicola**

### **Hillside Youth**

The Hillside Youth Group is still in full swing! The Youth Group is now meeting every second Friday night 19:00 – 20:30, and we have a steady stream of Young People in attendance. In December 2024 on the last meeting of 2024, we had a total of 16 young people in attendance! This was a real boost and highlighted the amazing work being carried out by the amazing team of Youth Leaders, which I am very grateful for, so thank you. We continue to see around 4-8 young people each Friday when we meet, and we hope this continues. The format is the same games, snacks, talks, more games, and at the start of 2025 we decided to use Youth Alpha material during our talks. This continues and has been very successful and wonderful to see the young people engage with it. We hope the youth group will continue to grow and develop over the coming year.

**Matthew Brotherston**



Another busy year for the Joshua Tree café which is now into its fourth year. One key change in the year was the integration of what was the separately run toddler group into what we call an unsupervised pre-school play area operating as part of the café and with child friendly food as part of the menu. This seems to have worked well.

We continue to have our regular customers who are attracted by the welcome, the hospitality and the friendly atmosphere and we also see new faces on a regular basis, and we continue to believe that what we do each Friday is an important part of 'being church'.

**Joe Osman**





To raise more awareness about this ministry, along with me, our befriender volunteers enjoyed sharing their experiences in Church recently. They talked about how they felt privileged to contact their befriender and also how in turn their 'Link Friends' appreciated the calls and felt valued with feeling lonely much of the time, sharing experiences

they could resonate with each other about. So thank you to Debbie, Susan, Pat and Christine for their input, which I received some good feedback on afterwards.

We currently have six people receiving phone calls. We have of course have had more in the past, some have ran their course naturally, and two having sadly passed away in the last year. We have received one referral in January, who originally contacted the Bereavement Group but couldn't attend with her being housebound.

Due to changes in their circumstances, two of our volunteers have had to drop out. Thanks go out to Debbie and Susan for taking on an extra Link Friend each, with their original one needing only monthly calls now. Christine also visits hers occasionally in Watergate Lodge as well as the weekly calls.

As with most activities, there is always room for additional volunteers so we can make more impact and reach out further into the community. Once the safe recruitment stage is over, a one off Twos Company training session (3 hours) and Diocesan Safeguarding course (2 hours if that) is required, both online (Support is available if you are worried about online stuff!) Afterwards all that is needed is a weekly/fortnightly phone call which is flexible to suit both parties, and letting me know if there are any concerns about your link friend. Please speak to Me Debbie or Susan Osman if you wish to learn more.

**Linda Cranney**  
**Two's Company Co-ordinator**



*"Thank you so much I feel better being able to talk about it and being part of a group of people going through what I thought was a period in my life that would not affect me so much but to see other people in the same situation ..... talking and listening really helped me and hopefully it continues in the following meetings I cannot thank everyone enough and look forward to next week and will try to take another step by joining you all in the café Thank you so much Phil"*

*"I found yesterday so helpful. You are doing something very special. Thank you again. Margaret"*

*"..... the group helped me a huge amount and always enjoyed the company of such special lovely people and especially to yourself a very special lady love to all and best wishes for future days Deb"*

The current weekly attendees on register in group is 18. Actual weekly attendance in group is between 12-15, held in the Bede Room. With myself leading, Sheila and Amanda as helpers. Sheila has initiated a registration form and keeps a weekly register.

- Past attenders 32 those who have attended and felt they could move forward after several sessions.

- Past phone support 3. One I still support.
- Total number 54 supported.

As people return to work following bereavement leave, they are unable to attend Friday morning groups. In response I began a Tuesday evening group 7-8 pm in the autumn of 2024 which was initially well supported, however as the weather worsened and nights grew dark, attendance dropped. Those grieving do not like leaving or returning to a dark empty home so I made the decision to suspend Tuesdays until Spring 2025. One I still currently support by phone until Tuesday resumes

The Friday group are really lovely and two ladies have become a great help serving the refreshments and washing up afterwards. One sourced a China pig for the fund we are supporting to buy "Pigs for Pastors". The members have been bringing in coffee and biscuits for refreshments. We put some in the kitchen for Sundays as we had too many! Myself Sheila and Amanda were given Christmas gifts from the group!

I changed the format in group: In Spring 2024 changing resource material from buying from "At a Loss" Holy Trinity Brompton to resourcing free resources currently from Our Daily Bread, I made a donation and request resources as and when needed. Allowing people to talk longer individually, this became more evident as a healing experience. Sharing how they had been the previous week, have they had any problems or triggers? How were they coping? Sharing and receiving information from other group members who have been through situations previously, has been so beneficial to others joining sessions. During gaps in chat, I read sourced information I have researched on grief and bereavement, including poems and verses, we end group session with prayer. The losses currently are suicides, car crashes, sudden deaths and long-term illnesses.

People have been referred from Whickham Health Centre, Q.E.Hospital Pastoral services, Gateshead Social Services, Creative Support Services. Multi media - Area Groups and Facebook advertising. A representative from the Coop Funeral Company is planning to come to the group to see how we operate.

Following the visit from Paul and Louise Vincent from St Mary's Chester le Street in January 2024, when they were planning a Bereavement Support Group. On the 13th of November, Sheila and I did a return visit to their group and were made very welcome in the beautiful venue, held in the Parish Centre, it's so big, airy and modern. They are following

the same format we use and have around 6 members and 4 helpers. Paul attended our Blue Service on 14th December as they thought it a good idea and will follow with one of their own in December 2025 in Chester le Street.

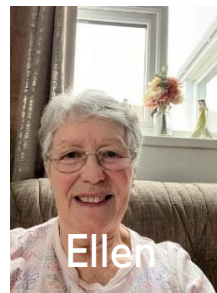
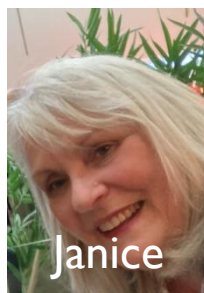
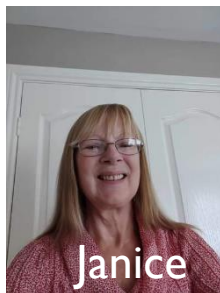
The Blue Service we held in the All Saints Lady Chapel on Saturday 14th of December was a great success and we received good reviews from all who attended. 15 attended and the

service was tenderly put together, with gentle carols music readings and script by Glen. Pat played piano. Maureen and Sue Whitehead served refreshments. Thanks to Gill and Alan for setting up the chapel. This service will definitely be held again in 2025. So nice for those wanting a quiet gentle Christmas service to remember people they have loved and lost.

**Jacqui Thompson**  
**Bereavement Group Facilitator**

## **Pastoral Report**

*This is an informal arrangement and is supported by :-*



### **Context**

The purpose of the group is to ensure the pastoral oversight of the congregation. We continue to meet as a group approximately three times a year. It should complement home groups and other pastoral support mechanisms.

### **The Past Year**

During the past year the pastoral group and other members of the congregation have continued to respond to a number of needs, providing comfort, spiritual and practical support. This is not a perfect system and to the best of our ability the team work to ensure that people are cared for at times of vulnerability. This often comes at cost to the team as people have busy lives and their own commitments and once again I would like to thank all involved.

Jesus cared for people he worked practically and in an unassuming manner. Always with compassion and respect for the person. The value base of the group is to do likewise. That

as the church grows we care for people with respect, compassion, sensitivity and confidentiality working within the appropriate policies. But ultimately in love - Love keeps no record of wrong, it is not self-seeking, it prefers one another...

I quoted this in last year's report and it continues to be relevant as we value and respect one another.

*1 Samuel 26: verse 12*

*David finds King Saul sleeping but does not expose or touch him at a point of vulnerability. He exercises Godly wisdom ... may we ask God for such wisdom as we work alongside people.*

### **Safeguarding**

As with all aspects of church life we foster safeguarding culture and the group continue to liaise with Alan Corner (Safeguarding Lead). In accordance with Durham Diocese Safeguarding Policy all members of the team are trained to level C0. Gill Corner and Janice MacKnight are trained to C2 level. All members of the team have a current DBS.

### **Prayer Phone**

This is for urgent prayer needs and is held by Maureen Shreeve who forwards prayer requests to a team of people who are committed to praying. This is well-used and Maureen is excellent at sharing requests with the team and reminding us to thank God for answered prayer. If you would like the number please speak with Maureen. Also when making a prayer request please make sure you have permission to do so.

### **Prayer Ministry**

Myself and Dorothy are working together to ensure opportunities for prayer are available to the congregation. Two team members are available for prayer on a Sunday morning. They wear a blue lanyard so that they are easily identifiable. Dorothy will be exploring areas of development. Currently the team are Dorothy McKenzie, Ellen Miller, Janice MacKnight, Damian Parry, Lina Beck and Joe Osman.



Can I please ask you that if you feel someone needs pastoral care that you make a member of the team aware? We are human and work with imperfect processes, therefore if you have any suggestions for improvement please do not hesitate to contact me or a member of the team.

**Janice MacKnight and the Team**

## **STRUCTURE, GOVERNANCE AND MANAGEMENT**

The method of appointment of PCC members is set out in the Church Representation Rules. All those regular members of our congregations are encouraged to register on the Electoral Roll and stand for election to the PCC.

The PCC members are responsible for making decisions on all matters of general concern and importance to the parish, including deciding on how the funds of the PCC are to be spent.

Hillside comprises two places of worship, All Saints, Lobley Hill and St Cuthbert's, Marley Hill.

Both are part of the Diocese of Durham within the Church of England. The correspondence address is Church Office, All Saints, Rowanwood Gardens, Lobley Hill, Gateshead, NE11 0DP.

The PCC is a body corporate (PCC Powers Measure 1956, Church Representation Rules 2006).

PCC members who have served from 1st January 2024 until the date this report was approved are:

Ex Officio Members:	Incumbent:	The Reverend Glen MacKnight (Chairman)
	Curate:	The Reverend Dawn Hudson (resigned Dec 2024)
	Curate:	The Reverend Amanda Boyd
	Warden:	Gill Corner
		Abi Sanders
	Deanery Synod:	Catharine Howe
	Licensed Reader	Lina Beck
Elected Members:	PCC Secretary:	Gloria Anderson
		Matthew Brotherston
		Sarah Morden
		Anna Mace
		Janice MacKnight
		Rita Muse
		Ellen Miller (Elected member Jan to April 2024)
		Dorothy McKenzie (Elected member Jan to April 2024)
Co-opted Members:	PCC Treasurer:	Robert Brotherston
		Ellen Miller (from April 2024)
		Dorothy McKenzie (from April 2024)

The PCC met **10** times in 2024. Minutes are taken at all PCC meetings and approved copies are displayed on Church notice boards and made available on individual request.

**Hillside Church Electoral Roll 2024**

70 members on the Hillside Church Electoral roll

At the time of submitting this report a new Electoral Roll 2025 has been prepared which was completed 30 March 2025 – Total 66 members

**Risk Review**

The PCC continually reviews the major risks to which the Charity is exposed, and systems have been established to mitigate those risks. The risks facing the charity include the state of repair of the

Churches and the financial requirements to meet its stated activities, including payment of its annual Parish Share.

The work of the Church is governed by safeguarding policies of the Church of England and in particular with due regard to the House of Bishops' Safeguarding Policy and Practice Guidance.

There have been no serious incidents or other matters relating to this charity's financial year that we should have brought to the attention of the Charity Commissioners.

**Hillside Safeguarding Report**

I am happy to report that there have been very few safeguarding issues to deal with, and those that have arisen have been dealt with and resolved.

Administratively this has been a very busy year, with the promise of another busy year ahead. The Church of England National Safeguarding Team has introduced a new set of 5 standards to cover:

1. **Culture, Leadership and Capacity:** Church bodies have safe and healthy cultures, effective leadership, resourcing and scrutiny arrangements necessary to deliver high-quality safeguarding practices and outcomes.
2. **Prevention:** Church bodies have in place a planned range of measures which together are effective in preventing abuse in their context.
3. **Recognising, Assessing and Managing Risk:** Risk assessments, safety plans and associated processes are of a high quality and result in positive outcomes. The
4. assessment and management of risk is underpinned by effective partnership working.

5. **Victims and Survivors:** Victims and survivors experience the timeliness and quality of Church bodies' responses to disclosures, and their subsequent support, as positively meeting their needs, including their search for justice and helping their healing process.
6. **Learning, Supervision and Support:** All those engaged in safeguarding-related activity in Church bodies receive the type and level of learning, professional development, support and supervision necessary to respond to safeguarding situations, victims and survivors, and respondents, effectively.

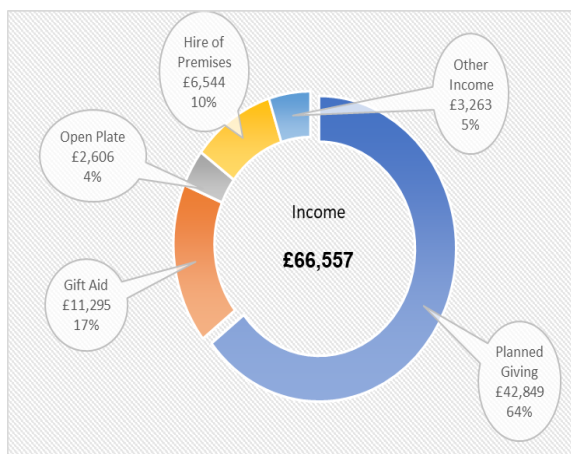
We are expected to ensure that we reach all these standards, and there is an 18 month programme of guidance to ensure that we do. Part of the aim of this process is to ensure that PCCs are aware that Safeguarding is their responsibility, with the help of the Parish Safeguarding Office and Incumbent, not the other way round. This will mean me preparing various documents for discussion and approval at PCC minutes, and maintaining updated records on the Diocesan Safeguarding Dashboard and Hub.

During the course of the year I have attended the 4 Diocesan PSO gatherings, along with meetings, all of which help me to do all I can to keep everyone safe at Hillside. I am very grateful for the support I get from the congregation, the PCC, and from Gloria.

**Alan Corner**  
**Parish Safeguarding Officer**

## FINANCIAL REVIEW

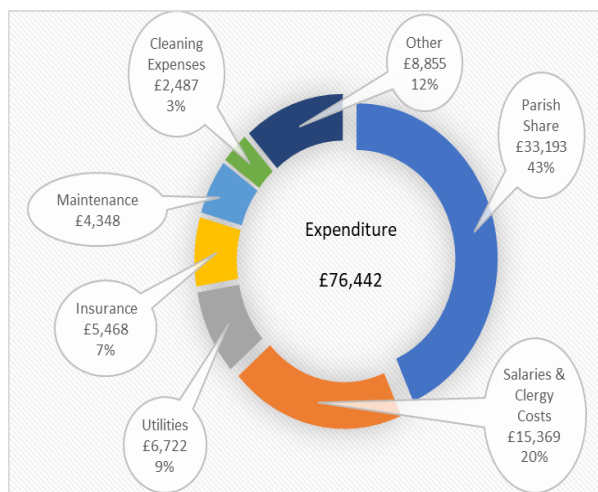
### WHERE OUR INCOME COMES FROM-GENERAL FUND



We are reliant upon the generosity of our congregation to fund our activities. These donations and the resulting Gift Aid account for over 80% of our unrestricted income.

This income stream has remained fairly stable for a number of years despite inflationary pressures on our cost base.

## WHERE WE SPEND OUR INCOME-GENERAL FUND



Our biggest expenditure is our Parish Share which is a contribution to Durham Diocese to fund, amongst others, stipends.

### FINANCIAL performance

A challenging year which saw us run a £10k deficit on the general fund.

Income was £8k lower than last year due in principle to lower hire income from the church hall (£3k) and we did not benefit from any one-off donations (2023 £4.5K)

Every year we are guided by the Diocese as to what our Parish Share should be, and the PCC are asked to consider pledging to that amount. This year the PCC agreed to commit to the guided amount of £33,113. Our ability to keep pledging at guided amounts will be severely restricted at current income levels. The financial situation is closely monitored by the PCC.

### RESERVES POLICY

The PCC recognises the need to hold reserves to ensure funding is available to provide continuing mission but also to ensure that the PCC can meet its legal commitments should the Charity be unable to continue due to a lack of sustainable income stream.

The PCC reviewed and reassessed the level of reserves during the year such that the level of reserves at December 2024 is deemed adequate to support current activities and cover known risks.

**Rob Brotherston**  
**Hillside Church Treasurer**

**Signed on behalf of the PCC**



**23 April 2025**





## Our Easter Journey







# THE PAROCHIAL CHURCH COUNCIL OF THE ECCLESIASTICAL PARISH OF HILLSIDE

(ALL SAINTS, LOBLEY HILL and St CUTHBERTS, MARLEY HILL)

REGISTERED CHARITY NUMBER 1153663

FINANCIAL STATEMENTS  
YEAR ENDED 31<sup>st</sup> DECEMBER 2024


**CHARITY COMMISSION  
FOR ENGLAND AND WALES**
**Independent examiner's  
report on the accounts**
**Section A**
**Independent Examiner's Report**

**Report to the trustees/  
members of** Hillside Church Gateshead

**On accounts for the year  
ended** 31/12/24 **Charity no  
(If any)** 1153663

**Set out on pages** Number of pages to be placed within the report

I report to the trustees on my examination of the accounts of the above charity ("the Trust") for the year ended 31/12/24.

**Responsibilities and  
basis of report** As the charity trustees of the Trust, you are responsible for the preparation of the accounts in accordance with the requirements of the Charities Act 2011 ("the Act").

I report in respect of my examination of the Trust's accounts carried out under section 145 of the 2011 Act and in carrying out my examination, I have followed the applicable Directions given by the Charity Commission under section 145(5)(b) of the Act.

**Independent  
examiner's statement**

I have completed my examination. I confirm that no material matters have come to my attention (other than that disclosed below \*) in connection with the examination which gives me cause to believe that in, any material respect:

- accounting records were not kept in accordance with section 130 of the Act or
- the accounts do not accord with the accounting records

I have no concerns and have come across no other matters in connection with the examination to which attention should be drawn in order to enable a proper understanding of the accounts to be reached.

\* Please delete the words in the brackets if they do not apply.

**Signed:**  **Date:** 20/03/25

**Name:** Denise Bratton

**Relevant professional  
qualification(s) or body  
(if any):** CIMA ID 3372C9

**Address:** 4 Ryall Crescent  
Medburn  
Northumberland NE20 0BX

**Section B**
**Disclosure**

Only complete if the examiner needs to highlight matters of concern (see CC32, Independent examination of charity accounts: directions and guidance for examiners).



## Hillside Church - 1153663

## Statement of Financial Activities

For the period from 01 January 2024 to 31 December 2024

	Unrestricted funds	Restricted funds	Endowment funds	Total funds	Prior year total funds
<b>Income and endowments from:</b>					
Donations and legacies	59,081	13,062	(1,779)	70,363	100,485
Income from charitable activities	931	—	—	931	1,165
Other trading activities	6,544	10,691	—	17,235	21,924
<b>Total income</b>	<b>66,556</b>	<b>23,753</b>	<b>(1,779)</b>	<b>88,530</b>	<b>123,574</b>
<b>Expenditure on:</b>					
Expenditure on charitable activities	73,951	12,172	—	86,124	80,328
Other expenditure	2,450	2,200	—	4,650	53,162
<b>Total expenditure</b>	<b>76,401</b>	<b>14,372</b>	<b>—</b>	<b>90,774</b>	<b>133,491</b>
Gains / losses on investment assets	—	15	(15)	—	—
<b>Net income / (expenditure) resources before transfer</b>	<b>(9,845)</b>	<b>9,397</b>	<b>(1,795)</b>	<b>(2,243)</b>	<b>(9,916)</b>
<b>Transfers</b>					
Gross transfers between funds - in	2,381	—	—	2,381	10,173
Gross transfers between funds - out	(1,550)	(831)	—	(2,381)	(10,173)
<b>Other recognised gains/losses</b>					
<b>Net movement in funds</b>	<b>(9,014)</b>	<b>8,565</b>	<b>(1,795)</b>	<b>(2,243)</b>	<b>(9,916)</b>
<b>Reconciliation of funds</b>					
<b>Total funds brought forward</b>	<b>25,170</b>	<b>11,078</b>	<b>31,614</b>	<b>67,863</b>	<b>77,779</b>
<b>Total funds carried forward</b>	<b>16,156</b>	<b>19,644</b>	<b>29,818</b>	<b>65,619</b>	<b>67,863</b>
<b>Represented by</b>					
Unrestricted					
General fund	7,692	—	—	7,692	15,402
Designated					
All Saints Toddler Group	—	—	—	—	1,329
Community Fund	31	—	—	31	—
Renes' Fund	4,365	—	—	4,365	4,748
ST Cuthberts Toddler Group	2,553	—	—	2,553	2,176
St Cuthberts Maintenance Fund	1,513	—	—	1,513	1,513
Restricted					
All Saints Gas Boiler Replacement	—	2,243	—	2,243	3,898
All Saints Hall Gas Boiler	—	1,311	—	1,311	—
Chapel Carpet	—	100	—	100	100
Community Hub	—	500	—	500	—
Joshua Tree	—	6,966	—	6,966	7,056
Overseas Friends	—	711	—	711	—
Rita's Fund	—	66	—	66	24
ST Cuthberts Boiler Fund	—	6,557	—	6,557	—
Sarah Jane Vickery Dale	—	1,039	—	1,039	—
Sunday School	—	149	—	149	—
Endowment					
Trust Fund - Sarah Jane Vickery Dale	—	—	29,818	29,818	31,614

There may be minor discrepancies in the totals if the pence are not being shown

# Hillside Church - 1153663

## Balance sheet (Summary)

As at: 31 December 2024

	Note	2024 £	2023 £
<b>Fixed assets</b>			
Tangible assets	4	12,605	4,033
<i>Total Fixed Assets</i>		<u>12,605</u>	<u>4,033</u>
<b>Current assets</b>			
Debtors	5	11,753	11,554
Investments		30,608	31,614
Cash at bank and in hand		<u>16,498</u>	<u>23,014</u>
		<u>58,859</u>	<u>66,181</u>
<b>Liabilities</b>			
Creditors: Amounts falling due in one year	6	5,844	2,351
<b>Net current assets less current liabilities</b>		<u>53,015</u>	<u>63,830</u>
<b>Total assets less current liabilities</b>		<u>65,620</u>	<u>67,863</u>
<b>Total net assets less liabilities</b>		<u>65,620</u>	<u>67,863</u>
<b>The funds of the charity:</b>			
Unrestricted Funds		16,156	25,170
Restricted Funds		19,645	11,079
Endowment Funds		29,819	31,614
<b>Funds of the church</b>		<u>65,620</u>	<u>67,863</u>

## **Notes to the Financial Statements**

### **Note 1 – Basis of preparation**

#### **Basis of Accounting**

Trustees' duties are set out in the Charities Act 2011 and Charity Trustee Act 1993. These Acts impose a duty on the trustees to direct the affairs of the charity, ensure that it is solvent, ensure that proper accurate accounting records are kept, and that statements of account which adhere to the charity law and accounting regulations are prepared in respect of each financial year.

These financial statements have been prepared in accordance with the Church Accounting Regulations 2006 together with the applicable SORP (FRS102). Under the provisions of FRS102, the PCC is not classified as a larger charity and therefore is not required to produce a Statement of Cash Flows.

The financial statements have been prepared under the historical cost convention with items recognised at cost or transaction value unless otherwise stated in the relevant note(s) to these accounts.

#### **Funds:**

Unrestricted funds represent those funds of the PCC that are not subject to any restrictions regarding their use and are available for application on the general purposes of the PCC.

Designated funds are those which have been nominally allocated for a particular purpose by the PCC, but which can be applied to other general purposes if required and are therefore also classified as unrestricted.

Restricted funds are funds given to the PCC to be spent for a specific purpose.

Endowment Funds relate entirely to a charitable trust whose objective is the provision of clergy residential accommodation.

#### **INCOME**

Voluntary Income and collections are recognised when received by or on behalf of the PCC.

Gift Aid receivable is included in income when there is a valid declaration from the donor. Tax recoverable is recognised in the same year in which the donations are made. Any recoverable tax not received is shown as a debtor in the balance sheet.

Any Gift Aid amount recovered on a donation is considered to be part of that gift and is treated as an addition to the same fund as the initial donation unless the donor or the terms of the appeal have specified otherwise.

Funds raised by church events are accounted for when received and are shown gross.

Rental income from the letting of PCC premises is recognised when the rental is due.

#### **EXPENDITURE AND LIABILITIES**

Liabilities are recognised where it is more likely than not that there is a legal or constructive obligation committing the PCC to pay out resources and the amount of the obligation can be measured with reasonable certainty.

The diocesan parish share is accounted for when due. Any parish share that is unpaid at 31 December would be provided for in these financial statements as an operational (though not a legal) liability and would be shown as a creditor in the balance sheet.

## **FIXED ASSETS**

Consecrated and benefice property of any kind is excluded from the financial statements in accordance with s.10 (2)(a) of the Charities Act 2011.

Tangible fixed assets are capitalised if they can be used for more than one year and cost at least £500.

Tangible fixed assets are stated at cost less accumulated depreciation and depreciation is charged on a straight-line basis over the estimated useful economic life of each asset.

## **CURRENT ASSETS**

Amounts owing to the PCC at 31 December 2024 in respect of fees, rents or other income are shown as debtors less provisions for amounts that are considered uncollectable.

Stocks held for sale as part of non-charitable trade are measured at the lower of cost or net realisable value.

## **CURRENT LIABILITIES**

All known liabilities for which the PCC is responsible in law up to 31 December 2024 are included in these financial statements.

## Note 2 - Analysis of Income

	<b>Total</b>			
	<b>Unrestricted</b>	<b>Restricted</b>	<b>Endowment</b>	<b>This year    Last year</b>
<b>Donations</b>				
Parish Giving Scheme	11,035	-		11,035    11,816
Planned Giving	29,084	-		29,084    26,981
Covenant Envelopes	1,715	-		1,715    2,024
Uncovenanted Envelopes	1,015	-		1,015    1,105
Open Plate	2,606	-		2,606    3,157
Gift Aid	11,295	106		11,401    10,748
Grant Income	-	7,901		7,901    34,000
Misc Income	1,435	2,071		3,506    7,365
<b>Total</b>	<b>58,184</b>	<b>10,079</b>	<b>-</b>	<b>68,263    97,196</b>
<b>Income from Charitable Activities</b>				
PCC Fees	931	-		931    1,165
<b>Total</b>	<b>931</b>	<b>-</b>	<b>-</b>	<b>931    1,165</b>
<b>Other Trading Activities</b>				
Toddler Groups	897	-		897    1,903
Traidcraft	-	-		-    -
Hire of Premises	6,544	-		6,544    9,335
Joshua Tree Community Café	-	10,692		10,692    12,590
Interest Received		2,983	(1,780)	1,204    1,387
<b>Total</b>	<b>7,441</b>	<b>13,675</b>	<b>(1,780)</b>	<b>19,337    25,214</b>
<b>INCOME TOTAL</b>	<b>66,556</b>	<b>23,754</b>	<b>(1,780)</b>	<b>88,531    123,575</b>



### Note 3 – Analysis of Expenditure

	<b>Total</b>			
	<b>Unrestricted</b>	<b>Restricted</b>	<b>Endowment</b>	<b>This year    Last year</b>
<b>Expenditure on Charitable Activities</b>				
Diocesan Parish Share Contribution	33,193	-		33,193    30,000
Salaries, wages and honoraria	14,169	-		14,169    12,892
Clergy and staff expenses	1,201	-		1,201    887
Church Event Costs (inc Toddler Groups)	563	-		563    1,993
Cleaners Wages & Cleaning Expenses	2,487	54		2,541    2,118
Joshua Tree Community Café	-	5,249		5,249    6,683
Maintenance	4,348	4,359		8,707    55,577
Telephony	589	-		589    628
Administration	1,929	-		1,929    1,458
Depreciation	491	2,287		2,778    2,038
Insurance	5,468	-		5,468    5,114
Church Service Costs	1,614	120		1,734    1,812
Gas	3,171	-		3,171    2,791
Electricity	2,999	-		2,999    3,959
Water	552	-		552    511
Governance	43	-		43    154
Miscellaneous	1,884	2,303		4,187    4,106
<b>Total</b>	<b>74,702</b>	<b>14,372</b>	<b>-</b>	<b>89,074    132,721</b>
<b>Other Expenditure</b>				
Charitable Donations	1,700	-		1,700    771
<b>Total</b>	<b>1,700</b>	<b>-</b>	<b>-</b>	<b>1,700    771</b>
<b>Total Expenditure</b>	<b>76,402</b>	<b>14,372</b>	<b>0</b>	<b>90,774    133,492</b>

**Note 4 – Tangible Fixed Assets**

	Computer Equipment & Software	Plant & Machinery (3yrs)	Plant & Machinery (5yrs)	<b>TOTAL</b>
<b>Cost</b>				
At 1st Jan 2024	5,455	3,179	10,189	<b>18,823</b>
Additions			11,350	<b>11,350</b>
Disposals	-	-	-	-
<b>At 31st December 2024</b>	<b>5,455</b>	<b>3,179</b>	<b>21,539</b>	<b>30,173</b>
<b>Depreciation</b>				
At 1st Jan 2024	5,455	3,179	6,155	<b>14,789</b>
Disposals	-	-	-	-
Depreciation			2,778	<b>2,778</b>
<b>At 31st December 2024</b>	<b>5,455</b>	<b>3,179</b>	<b>8,933</b>	<b>17,567</b>
<b>Net Book Value</b>				
At 1st Jan 2024	-	-	4,033	4,033
<b>At 31st December 2024</b>	<b>-</b>	<b>-</b>	<b>12,605</b>	<b>12,605</b>

## Note 5 – Debtors

	<b>This year</b>	<b>Last year</b>
Gift Aid Recoverable	6,822	6,407
Prepayments	4,931	5,147
Durham Diocesan Board of Finance	30,608	31,614
Accounts Receivable	0	0
	<b>42,361</b>	<b>43,168</b>

## Note 6 – Creditors

	<b>This year</b>	<b>Last year</b>
Accruals	1,174	1,659
HMRC	117	95
NEST Pension Costs	-	-
Agency Collections	525	15
Accounts Payable	4,028	582
	<b>5,844</b>	<b>2,351</b>

## Note 7 – Personnel Costs

	<b>This year</b>	<b>Last year</b>
Salaries and other emoluments	13,937	12,698
Employers National Insurance	-	-
NEST Pension Costs	231	194
	<b>14,168</b>	<b>12,892</b>

Number of employees in post 31 December.	1	1
Average number of employees over the year.	1.00	1.00

There were no employees who met the definition of "key management personnel" during the year. [0]  
 No salary or employee benefits have been paid to Trustees in respect of their membership of the PCC. [0]  
 Incumbent clergy salaries are paid directly by the Durham Diocese and not by the PCC.