



# COLCHESTER FOODBANK ANNUAL REPORT CHALLENGING HUNGER & COVID-19 August 2021



Supported by:



Mayor of Colchester  
Deputy of the Cinque Port Liberty of Brightlingsea



**PROVIDING EMERGENCY FOOD PARCELS AND TOILETRIES FOR LOCAL PEOPLE IN CRISIS AND WORKING WITH OVER 265 PARTNER AGENCIES TO FIGHT POVERTY. WE ARE THE BUSIEST FOODBANK IN ESSEX PROVIDING OVER 135,000 MEALS A YEAR, FREE AT THE POINT OF DELIVERY, AND WORKING WITH PARTNER AGENCIES TO RESTORE DIGNITY AND CHOICE AND AVOID CREATING DEPENDENCY.**

.....

**“THANK YOU SO MUCH FOR ALL YOUR TIRELESS EFFORTS OVER THIS PAST YEAR, PARTICULARLY WITH ALL THE EXCITING OPPORTUNITIES AND GROWTH THAT YOU’VE HANDLED! EVERY ONE OF YOUR TEAM HAS PLAYED A CRUCIAL ROLE IN SUPPORTING YOUR LOCAL COMMUNITY AND WE ARE TRULY GRATEFUL TO EACH OF YOU!”**

Samantha Stapley, Chief Operating Officer at the Trussell Trust



# CONTENTS

Ammunition against poverty	4
Our partners	6
Our work	10
Our Chair of Trustees’ Message	13
Our Chief Officer’s Message	14
Our goals	16
How we met our goals	18
Our Impact	20
Our structure	22
govenors	24
Trustees	26
Customer Journey	28
Voucher Report	30
Our Sites	32
Client and Delivery supervisor Report	48
Our volunteers	50
Volunteer Report	52
Public Relations Report	54
Big thank you	56
Re:focus	60
Essex Free School Uniform Report	63
Tots2teens	68
Treasurer’s Report for 2020	72
Independent Examiners Report	74
Accounts	76



# AMMUNITION AGAINST POVERTY

## #AMMUNITIONAGAINSTPOVERTY

This year has seen an exciting collaboration between the Foodbank and the Military Provost Staff Regiment (MPS) which is the oldest Army unit in Colchester.

The foodbank was approached by Major John Wharton MBE who is the Regimental Second in Command and Deputy Commandant of the Military Corrective Training Centre (MCTC).

Initially the idea was to provide an opportunity for those detainees held at the MCTC to volunteer at the foodbank and to gain a sense of worth by providing support to their local community. The first planned activity was to assist the foodbank in the relocation of some of the stock from Langham to Tollgate.



Despite COVID restrictions, the MPS Regiment provided a workforce of 18 soldiers of whom all of them are staff at the MCTC and all wanted to give something back to the community. During the three-day project which took place in April, resulted in the sorting and moving of 10 tonnes of dried food and the relocating of 350 crates of food from the Langham storage unit to Tollgate. The MPS Regiment and the MCTC believe this is the first accomplishment in creating a strong and enduring collaboration with Colchester Foodbank, "During our first visit to the foodbank, we (the MPS Regt) were impressed and humbled by the efforts of all the volunteers and how welcomed we were made to feel."

The foodbank provides an essential service to the community, and I believe you only understand the severity of food poverty by visiting and speaking to those who support the community. The selfless commitment and dedication of those who work at the foodbank is commendable and we hope to be able to continue to support them in the future".

In May, we hosted a visit by Brigadier Vivienne Buck who is the Army's most senior Military Police Officer and commander to the MPS Regiment. Surprised by the magnitude of the level of support given by the foodbank to the community, she is looking forward to the foodbank and the MPS Regiment forging an enduring partnership.

**Major John Wharton MBE**  
The Military Corrective Training Centre



**"THE SELFLESS COMMITMENT AND DEDICATION OF THOSE WHO WORK AT THE FOODBANK IS COMMENDABLE AND WE HOPE TO BE ABLE TO CONTINUE TO SUPPORT THEM IN THE FUTURE".**





# OUR PARTNERS DESCRIBE COLCHESTER FOODBANK CHARITY'S WORK

## TO WHOM IT MAY CONCERN.

As the owner and Franchisee of all the McDonalds in Colchester & Tendring I'm always looking to support local groups/charities within the communities we trade in. I approached the Foodbank in Colchester in February and what a fantastic response I got, I met Nichola Ranson and her fantastic team at the Foodbank and following a tour of the facility which was highly impressive I had the pleasure of meeting the team onsite...

The energy and professionalism shown hooked my team and I immediately and thus started our support for the foodbank in Stanway. We have held 2 huge collections through my restaurants and my fantastic staff & managers and are proud to support this wonderful Foodbank - I met Michael Beckett the Chief Officer and again was blown away by his energy and positive stance on supporting our local community, its a credit to you all!!

I look forward to doing even more in the future along with my 4 Colchester restaurants and the 450 staff we employ. As for Nichola, Michael and the team - well done and keep up the tremendous work you all do!

**Craig Newnes, Franchisee - McDonalds Colchester, Sudbury & Tendring.**



**"I'VE BEEN SO IMPRESSED HOW, UNDER MIKE BECKETT'S LEADERSHIP, OUR FOODBANK HAS EXPANDED TO COPE WITH THE GROWING DEMAND THROUGH THE COVID PANDEMIC AND ALSO OFFERS OTHER SERVICES FOR ALL THOSE NEEDING SUPPORT."**

Cllr Robert Davidson Mayor of Colchester 2020-22.



**"THE FOODBANK HAS DONE AN EXTRAORDINARY JOB IN EXTRAORDINARY TIMES TO HELP PEOPLE ACROSS THE BOROUGH. THE DEDICATION OF THEIR VOLUNTEERS IS AMAZING. IN A YEAR THEY HAVE EXPANDED FROM ONE CENTRAL HUB TO OPENING VARIOUS HUBS ACROSS THE BOROUGH IN AREAS OF HIGH NEED, WHICH IS ASTONISHING CONSIDERING THE CIRCUMSTANCES. THEY ARE A FANTASTIC ASSET FOR COLCHESTER, THAT SHOWS THE TRUE SELFLESSNESS AND MORAL FIBRE OF THE TOWN."**

Cllr Lee Scordis - Colchester Borough Councillor and Essex County Councillor



**"COLCHESTER FOOD BANK PROVIDES MUCH NEEDED HELP TO RESIDENTS IF CASTLE WARD AND THE WIDER TOWN. IT IS UNFORTUNATE THAT DEMAND IS INCREASING SO MUCH AND THE FOOD BANK DO A GREAT JOB MITIGATING THE EFFECTS OF THIS AND HELPING PEOPLE IN NEED'.**

Cllr Mark Goacher



**COLCHESTER FOOD BANK HAS BEEN A SOURCE OF SUPPORT TO US AT THE BOAZ PROJECT, THROUGH THEIR AMAZING COLLABORATIVE WORK WITH US AS AN ORGANISATION, MANY MORE FAMILIES ARE BEING REACHED AND SUPPORTED. THE WORK OF COLCHESTER FOODBANK IS NOT ONLY A LIFELINE TO MANY FAMILIES BUT AN ESSENTIAL SUPPORT OUTLET FOR SMALLER ORGANISATIONS LIKE OURS".**

Elizabeth Alake-Akinyemi, Boaz Project (DAM) Reducing Waste & Hunger and Improving Well-being.



**"THE FOODBANK TEAM HAVE PROVIDED OUTSTANDING SUPPORT IN THE LAST YEAR WHICH HAS BEEN THE MOST CHALLENGING FOR ALL COMMUNITIES WITH THE PANDEMIC. I CAN'T THANK EACH AND EVERY EMPLOYEE & VOLUNTEER ENOUGH FOR HELPING SUPPORT SOME OF THE MOST VULNERABLE IN SOCIETY."**

Cllr Martin Goss - Colchester Borough Councillor







**“OUR PARTNERSHIP WORK WITH COLCHESTER FOODBANK HAS BEEN SUCH A POSITIVE EXPERIENCE FOR ALL OUR FAMILIES RESIDING IN REFUGE. THE STAFF AND VOLUNTEERS ARE APPROACHABLE, FRIENDLY AND ALWAYS SMILING. THEY RESPOND TO OUR REQUEST FOR SUPPORT OFTEN AT VERY SHORT NOTICE DUE TO THE NATURE OF OUR BUSINESS. WE HAVE NOW SET UP THAT SOME OF OUR CLIENTS CAN PARTICIPATE AS VOLUNTEERS WITH THE FOODBANK, THE FEEDBACK FROM OUR CURRENT ACTIVE CLIENT IS THAT IT HAS PROVIDED HER WITH SUCH A VALUABLE EXPERIENCE WHILST SHOWING HER WHAT AN LIFELINE THE FOODBANK OFFERS TO EVERYONE. THANK YOU SO MUCH FOR ALL YOUR HARDWORK.”**

Lorna Preece, Next Chapter, Refuge Services Manager



**“BRIGHTLINGSEA FOODBANK IS AN ASSET TO THE TOWN PARTICULARLY DURING THE LOCKDOWN WHEN THE EXCEPTIONAL VOLUNTEERS PROVIDED SUPPORT TO LOCAL RESIDENTS. THE SUPPORT THE FOODBANK GIVES EASES FINANCIAL PRESSURES ON FAMILIES IN WHAT HAS BEEN AN UNPRECEDENTED TIME BUT THE CARE, HELP AND ADVICE FROM THE VOLUNTEERS GOES MUCH FURTHER.”**

Cllr Jayne Chapman, Mayor of Brightlingsea.



**“COLCHESTER FOODBANK DESERVES ENORMOUS CREDIT FOR ALL THE WORK THEY DO. THEY ARE, QUITE LITERALLY, A LIFELINE FOR SO MANY VULNERABLE RESIDENTS AND FAMILIES IN NEED. THE FOODBANK HAS BEEN OF VITAL IMPORTANCE DURING THE PANDEMIC PROVIDING FOOD, TOILETRIES AND OTHER ESSENTIAL ITEMS TO THOUSANDS OF LOCAL PEOPLE. IT IS A PLEASURE TO WORK WITH THEM AND, FOR ME, THE STAFF AND VOLUNTEERS AT THE GREENSTEAD FOODBANK HAVE GONE THE EXTRA MILE TO BE WELCOMING, FRIENDLY, EFFICIENT AND SUPPORTIVE.”**

Cllr Tim Young - Deputy Mayor of the Borough of Colchester, Colchester Borough Councillor



**“I’M DELIGHTED THAT THE COLCHESTER FOODBANK HAS MADE STANWAY ITS BASE. RESIDENTS HAVE WELCOMED THE MOVE, HELPING TO TRANSFER STOCK AND VOLUNTEERING. THEY ALSO LIKE THE LOCATION AS IT IS A HIGHLY VISIBLE AND VALUED ADDITION TO OUR COMMUNITY.”**

Cllr Lesley Scott-Boutell



**“THRILLED TO BE WORKING ALONGSIDE COLCHESTER FOODBANK AT TOLLGATE. MIKE AND HIS TEAM HAVE BEEN SUCH AN AMAZING SUPPORT TO US AND THE FAMILIES WE SUPPORT FOR THE PAST 3 YEARS. TOTS2TEENS PROVIDE FAMILIES IN NEED WITH CLOTHING FOR CHILDREN AGES 0-16 YEARS AS WELL AS ESSENTIALS WE CAN BE FOUND ON FACEBOOK AND INSTAGRAM.”**

Eunice and Barbara from Tots2Teens - Colchester Baby and Children’s Bank



**“ESSEX FREE SCHOOL UNIFORM (A DNA NETWORKS PROJECT) ARE EXCITED TO BE TEAMING UP WITH COLCHESTER FOODBANK AGAIN AS WE BOTH LOOK TO SUPPORT THE LOCAL COMMUNITY IN THIS GROWING TIME OF NEED.”**

Mark Snelling from Essex Free School Uniform Exchange



We asked our referral partners how they rated our service?

Percentage	parcels	Urgent need	Services offered	Contact	Provision of vouchers	Overall
Poor						
Adequate						
Good	4.76%			9.52%		
Very Good	14.29%	14.29%	19.05%	23.81%	19.05%	15.00%
Excellent	80.95%	85.71%	80.95%	66.67%	80.95%	85.00%





# OUR WORK

**THE FOODBANK FOCUSES ON HELPING PEOPLE FROM ALL WALKS OF LIFE, RESTORING DIGNITY AND REVIVING HOPE – WHETHER IT IS WITH OUR FOODBANK CLIENTS, SUPPORTERS OR INDEED OUR VOLUNTEERS.**

We are a public health and social welfare charity committed to being a cooperator for the common good. We welcome people from all backgrounds. We operate according to the principles of compassion, honesty, integrity, openness, kindness and care of all people, regardless of backgrounds or beliefs. We serve and work with people of all faith groups and beliefs, or none. Volunteers who share our principles are welcome, whatever their personal faith position. We are non-judgemental and believe that everyone has the right to have nutritious meals, dignity, a chance to work and hope for the future. We welcome every client as our guest with bespoke service to address their individual needs.

## OUR VISION/WHAT WE WANT TO SEE HAPPEN IN THE LONGER TERM:

To end hunger and poverty in the UK (and therefore to close the charity).

## OUR AIMS/WHAT WE INTEND TO DO TO HELP MAKE THIS HAPPEN:

The prevention or relief of poverty in Colchester and the surrounding area, in particular, but not exclusively, by providing emergency food supplies to individuals in need and/or charities or other organisations working to prevent or relieve poverty.

## OUR MISSION/WHAT WE DO:

The Foodbank exists to prevent or relieve poverty in Colchester and the surrounding area, in particular, but not exclusively, by providing emergency food supplies to individuals with assessed short-term need and/or to charities or other organisations working towards the same aims.

## OUR VALUES/HOW WE BEHAVE WHILE DOING WHAT WE DO:

Colchester Foodbank is committed to being a community built on diversity, tolerance, cooperation, and mutual respect; we want to contribute to society and demonstrate social responsibility. Our values are important to us, and we aim to live them out in all areas of our work. We are passionate about what we do and the difference it makes in the lives of others. We are compassionate; we give selflessly and put others before ourselves. We hold ourselves accountable: we acknowledge and assume responsibility for actions, decisions, and consequences – as individuals and as an organisation. We are innovative, with the ambition to pursue new and creative ideas that have the potential to change lives for the better. We are committed to empowering and encouraging staff, volunteers and clients to take the initiative and achieve their best safe environment where we reflect on our work and look for new learning opportunities.

## OUR GOAL/ THE IMPACT WE WISH TO HAVE ON EACH PERSON'S LIFE:

Our goal is to make the foodbank centre an informal and friendly place for each client, so they feel welcomed and are helped not to need us again.

Our Dream/The happily ever after ending we long for, for everyone. Our dream is to close through lack of demand for emergency food parcels because local people are no longer in crisis.

## OUR PUBLIC BENEFIT /HOW WE HELP:

Colchester Foodbank provides short-term emergency support to individuals and families in crisis, within Colchester and the surrounding area, including Brightlingsea, Tiptree and Wivenhoe.

We coordinate with other local foodbanks and regularly review our areas of coverage in response to need. To qualify for help, families and individuals must be referred by a professional from a partner organisation, such as Social Services, One Support, Community Mental Health Team, local housing groups, Citizens Advice Bureau and Age UK. We also work with Churches, Schools, GP Surgeries, philanthropic individuals, community groups and businesses.

The need for referral to Colchester Foodbank, and our partners Brightlingsea, Central, Greenstead, New Town, Monkwick, Rowhedge, Tiptree and Wivenhoe Foodbanks is usually caused by a complex combination of events that may include factors like benefits delays, unemployment, illness and domestic violence. Where possible we refer or signpost people to relevant agencies, so they can access the additional help they need. This enables people to more fully understand the reality of their issues and how to get through them, seeking appropriate support and targeted transitional intervention. Also for us, to be able to monitor our longer term social impact.





## OUR CHAIR OF TRUSTEES' MESSAGE



**EACH YEAR I AM GIVEN THE CHALLENGE OF SHARING SOMETHING WISE AND WONDERFUL. THE REALITY IS THAT MY OVERWHELMING NEED IS TO SAY THANK YOU AND TO SAY HOW IN AWE OF OUR ACHIEVEMENTS I AM AFTER ANOTHER PROFOUNDLY CHALLENGING 12 MONTHS.**

I remain staggered that the Foodbank has carried on like an express train, unblinking through the Pandemic - through various lockdowns and easing. Friends and colleagues have had to step back and so many new folks have stepped forward and bedded in so quickly and amidst all this we have had new satellites open whilst also moving our base of operations to Tollgate. Thank-you volunteers, thank-you Mike, Nikki and Armin and thank-you trustees.

In the midst of all this incredibly compassionate and sacrificial good work it is strange for me to be picked out for the prestigious award of an MBE. We have explored getting a Queens award for the whole charity and although nominated and commended this was not to be. So for me to get the MBE for services to the people of Colchester feels (in relation to the Foodbank) like the referee getting the "Man of the match" award when you have been doing all the good work. My prayer in accepting the award is that it brings honour and esteem to the good work that you tirelessly do.

My one challenge to you is this - when I catch up with folks I sometimes hear the phrase: "I only do a Tuesday morning" or "I can only do a couple of hours".

We have build this charity on what folks have "only" offered, whether it's a tin of tuna at a supermarket drop off or a couple of hours. All these "only's" build to bring a powerful and practical food parcel of hope and expert advice and restore dignity to those caught in the harsh challenges of life. I promise to avoid using the word "I only" if you promise to as well.

God bless us all in the endeavours of this coming year as we give thanks for each other and all that had been achieved.

**Rev Andrew Fordyce MBE**  
Chair of Trustees



# OUR CHIEF OFFICER'S MESSAGE



## CHIEF OFFICER REPORTING ON 2020 WITH A SNEAK PEEK FOR THE FIRST 6 MONTHS OF 2021

### Quarter one (January, February and March 2020) Business as usual

After a record-breaking busiest Christmas ever to date, the Foodbank's 150 volunteers were very stretched but really stepped up to keep everything running well for our clients.

Our Trustees agreed as usual to transfer any surplus for the year to the Building Fund and we had big plans to buy and over the Summer renovate a building in Abbey Field. Before the Trustees of the Foodbank would agree to collect money for a building (as the cost of rent was our largest overhead) they passed a resolution that if the Foodbank were to close any money raised for a building and/or any building owned would be donated to a local anti-poverty charity or charities, chosen at the discretion of the Trustees. In February we updated our emergency continuity plan. In March we began the strategic planning process for the next three years ahead.

### Quarter two (April, May and June 2020) The Pandemic demand spike

In April we suspended our strategic planning process, our building buying and renovation plan and we had already instituted our emergency continuity plan. Many of our volunteers had a family member that caused them to need to shield or needed to shield themselves we went from 150 volunteers down to 50 volunteers. We started training up new volunteers and instituting

additional shifts early shifts, reinstituting the afternoon shifts used in December at our busiest and sometimes a fourth evening shift was also added to the mix, to make sure we kept up with demand. Honourable mentions for help at this time to short term temporary staff help during Covid from Neil Turnbull and Sharon Guest and for longer term work from Lucy Benneworth. Also help from Aitch and the emergency Covid Volunteers, Colchester GoodGymers, Pete and the Anti-Loo Roll Brigade volunteers, who helped us plug volunteering gaps throughout the year and Rollerworld for doing collections for the Foodbank.

### Quarter three (July, August and September 2020) Flat out summer

We discovered white asbestos at our Langham site and had to close it down, while we reported this to the Health and Safety Executive and got the site cleaned to the satisfaction of Environmental Health. We are so very grateful for the Churches that allowed us to use their halls while they were closed to give us the capacity to work safely and ensure continuity of the Foodbank service. We also opened additional foodbank sites taking the foodbank to the community with less public transport available and went into partnership with Tiptree Churches Foodbank. We particularly wish to thank the hardworking staff team of Nikki Ranson and Armin Lange who helped ensure our services ran continuously and our Lead Volunteers for

helping to make all of this happen. Thanks also to the Co-operative Bank for agreeing to host our AGM with short notice we had originally planned to use the Football Stadium but this fell through. We were the first external group to use the Bank's newly refurbished Dome Room and our keynote speaker was Rt. Revd. Roger Morris, Bishop of Colchester.

### Quarter four (October, November and December 2020) Social distancing

In December we took possession of a new building in Stanway, which we used for additional storage to help us get through our traditional peak demand at Christmas time which was again the busiest Christmas ever. We also said goodbye to our Warehouse Supervisor Amanda Day who moved on. We also thank the Rotary Club for helping us with a van just when we needed it most. Meeting demand for our service was achieved with additional early morning, afternoon and evening shifts as well as additional warehouse shifts on Sunday. At the end of December, we closed our North Station Road site.

### Quarter one (January, February and March 2021) The Pandemic Strikes back

After another record-breaking busiest Christmas ever the Foodbank's 250 volunteers were very stretched, despite there being so many more of them than last Christmas!

Our Trustees couldn't transfer as usual the surplus for the year until March as to do so sooner would have broken the charity's reserves policy. Having prepared throughout January, at the start of February, we closed Moorside to the public and opened our seven times bigger Tollgate Village site. During February we moved our warehouse operations to Stanway and in March our shipping containers to Stanway too.

### Quarter two (April, May and June 2021) Bedding down in our new Food HQ

Fine-tuning the operations in Tollgate village. We wish to particularly thank Jayne Gee, Daniel Watts and Jason Watts from Tollgate Partnership for agreeing to host us and for their help improving the building and helping us feel most welcome. We work with partners to help ensure our clients have access to services that help them, we have hosted Re:focus, The Essex Free School Uniform and Tots2Teens (the babybank) and StanWell Hub. We particularly wish to thank Paula, Des and Jenny from Re:focus; Eddie, Mark

and Izabela from the Essex Free School Uniform; Eunice and Barbara from Tots2Teens and Wendy from the StanWell Hub. We had to wait till June before being able to do a Grand opening of the new Stanway foodbank site with a group of volunteers, representatives of the various Foodbank centres, including Win Pomroy and Bob Walsh from Brightlingsea Foodbank and Mark Norrington from Wivenhoe Foodbank. They, along with Jayne Gee from Tollgate Partnership and other invited guests positioned themselves outside. The High Steward of Colchester, Sir Bob Russell, a patron of the Foodbank, welcomed everyone and thanked the Tollgate partnership for the new building. The Rt. Revd. Roger Morris, Bishop of Colchester and the Foodbank's other Patron, blessed the premises and the Mayor of Colchester, Councillor Robert Davidson cut the ribbon praising the hard work of our volunteers and the difference the Foodbank makes to those in need or crisis. Congratulations to our Chair for being featured in the 2021 Queen's Birthday Honours, Rev Andrew Fordyce MBE.

In early October the UK Government is planning to cut £20 a week from Universal Credit payments. If they choose to take this vital lifeline away, it will be a devastating blow for millions of households who are already struggling to make ends meet and the biggest overnight cut to social security since the Second World War. On Wednesday, 8 September, the Trussell Trust published new research, conducted by YouGov, laying bare its likely impact on those we serve. A fifth of people currently claiming Universal Credit – representing 1.2 million people in the UK – say they are 'very likely' to need to skip meals when the cut hits. But it doesn't have to be like this. The UK Government could choose to keep the lifeline. We at Colchester Foodbank are throwing our full support behind the Trussell Trust's #KeepTheLifeline campaign and we urge you to join us.

The overwhelming generosity of local people is how we are able to keep doing what we do, thank you to those who support us with their time, their money and their donations of food. We are doing all we can to plan for the future, to be ready to help those in need now and to try to capture evidence that might help policymakers reduce/prevent the need for foodbanks in future.

*Mike*

**Michael Beckett BA(Hons) DiploD MIOd**  
Chief Officer of Colchester Foodbank



# OUR GOALS AND OBJECTIVES FOR THE YEAR

## ACCESSIBLE:

Develop localised distribution centres at different times and days.

## RESILIENT:

Consolidate operations at our Food HQ hub.

## SAFEGUARDED:

With partners help together we keep clients and the foodbank safe.

## PARTICIPATORY:

Increase the bank of volunteers, particularly drivers available.

## RESPONSIVE:

Provide services to meet stakeholder's identified local needs.

## A BETTER FUTURE:

Strengthen our safety net, provide evidence on causes of poverty.

# OUR RISKS AND CHALLENGES FOR THE YEAR

## WELLBEING:

The ongoing saga of CoVid-19 and adapting to this.

## ECONOMY:

In an economic downturn and the end of the furlough scheme.

## PEAK DEMAND:

Coping with Christmas, which is usually our busiest time of year.

## CHANGE:

Finding the locations and resources we need to provide a quality service.

## PRESSURES:

Working safely, social distanced and ensuring the dignity of clients.



# HOW OUR GOALS WERE MET THROUGH OUR ACTIVITIES

Thanks to the National Emergencies Trust and the Trussell Trust we have been able to employ Nichola and thanks to the Asda Fight Hunger Create Change fund we have been able to employ Armin. Without their fantastic support and hard work, we wouldn't have succeeded as well as we have.



We introduced a pilot scheme to tackle holiday hunger, helping schools by delivering extra food parcels throughout the school holiday periods, highlighting the fact families are still in dire need and suffering food hardship in the holiday term. We contacted over 40 schools, inviting them to be issuers of our foodbank vouchers, so it is easier for families to contact us for help. This summer holidays we helped 48 families a week via the schools referral system and we recruited 9 fabulous drivers to help with the weekly deliveries. Without the help of all our volunteers helping with packing parcels, or delivering them to our storage area, we simply wouldn't be able to do this.

Over summer 2020 we formed a partnership with our neighbouring Foodbank Tiptree Churches Foodbank who did a delivery only model and with our help transitioned to produce a take away service as well. We opened Stanway Foodbank and Shrub End Foodbank to bring the Foodbank closer to the people, then opened New Town Foodbank, Monkwick Foodbank, Rowhedge Foodbank and a central Foodbank in partnership with Open Door.



We were pleased to receive Colchester Borough Council's community recognition award, which honours those who help communities flourish. 'Together We Can' recognises and celebrates community pride in neighbourhoods across the borough. It offers thanks to Colchester Foodbank and Greenstead Foodbank who have given their time and efforts to create a lasting impact within their communities. We also received this award again in 2021.



## Our Social Policy impact

**WE CAMPAIGN AGAINST FOOD POVERTY AND FOOD INSECURITY WHICH EXISTS WHENEVER THE AVAILABILITY OF NUTRITIONALLY ADEQUATE AND SAFE FOODS OR THE ABILITY TO ACQUIRE ACCEPTABLE FOODS IN SOCIALLY ACCEPTABLE WAYS IS LIMITED OR UNCERTAIN.**

Our service has moved beyond just nutritional considerations, to concerns for social justice and equality, to highlight the importance of social inclusion and participation in society. There exists considerable socioeconomic disadvantage of the people using the food bank. We seek to provide additional evidence where other problems intersect with insecure food access or cause food poverty. We look for quick win social policy interventions that are needed and achievable.

It takes more than food to end hunger. That's why we campaigned to reduce the six week wait for Universal Credit as this was too long and the government reduced the wait to five weeks. We are continuing to campaign for this to be reduced as evidence from our clients shows this wait of five weeks is causing many people to need our service. We also campaigned to keep the £20 a week Universal Credit uplift.

Our commitment to tackle not only food poverty but the causes of food poverty led us to be the first Foodbank in the UK to affiliate to Citizens UK as a founding member of Colchester Citizens. Citizens UK organises communities to act together for power, social justice and the common good. We work with the Trussell Trust and their network of Foodbanks to bring together the experiences of foodbanks and challenge the structural economic issues that lock people in poverty, campaigning to end the need for food banks in the UK.



## Essex Food Poverty Alliance: DEFRA grant

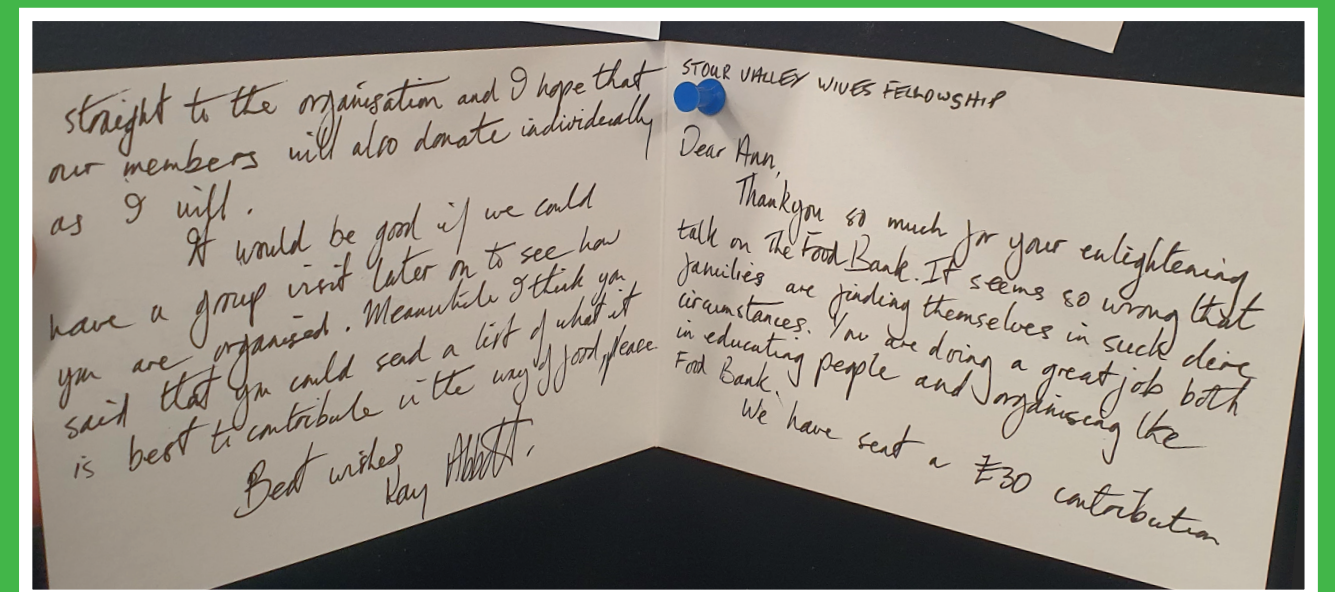
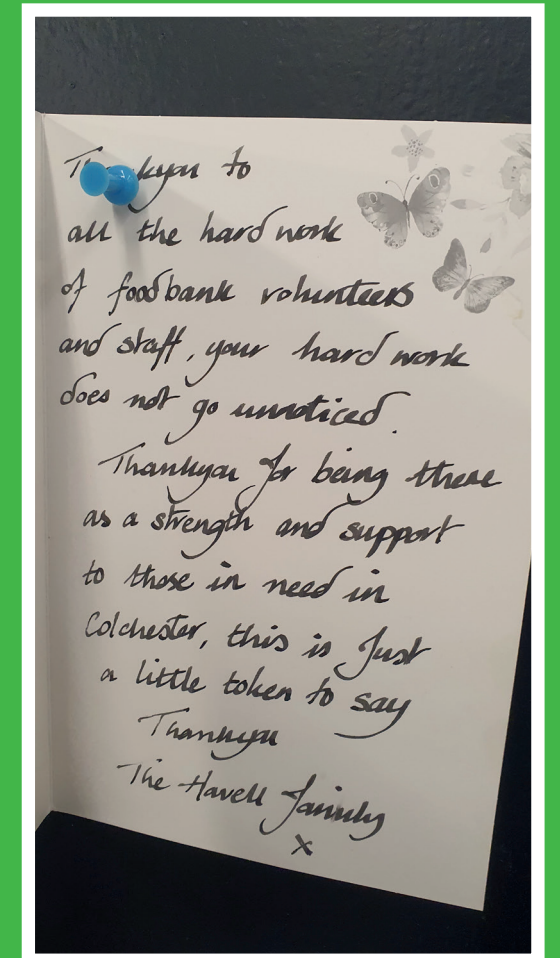
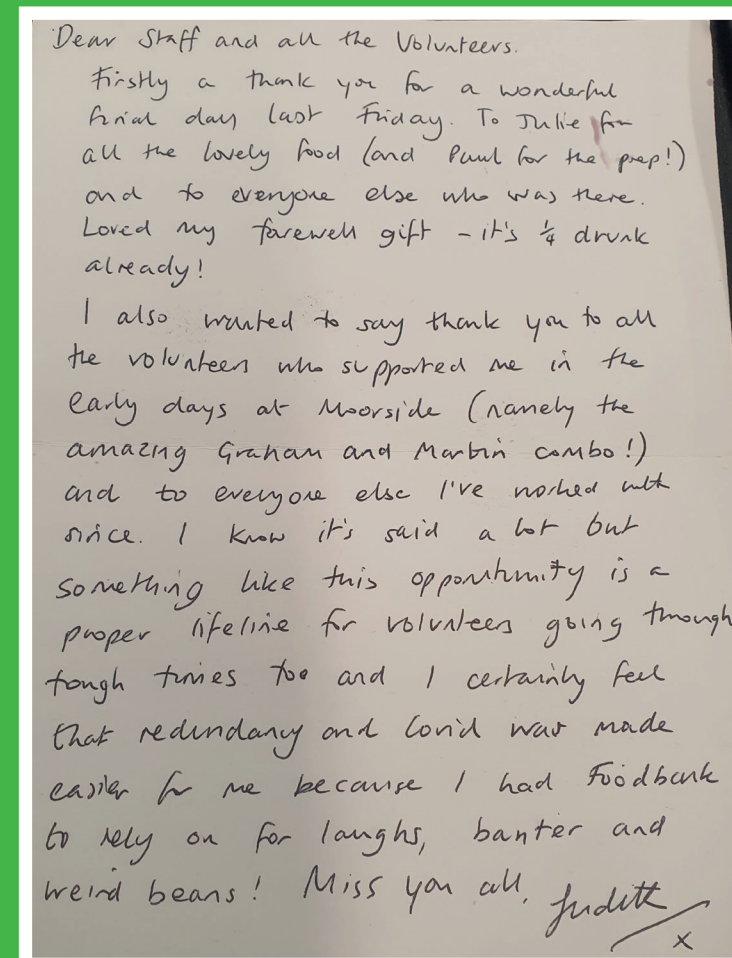
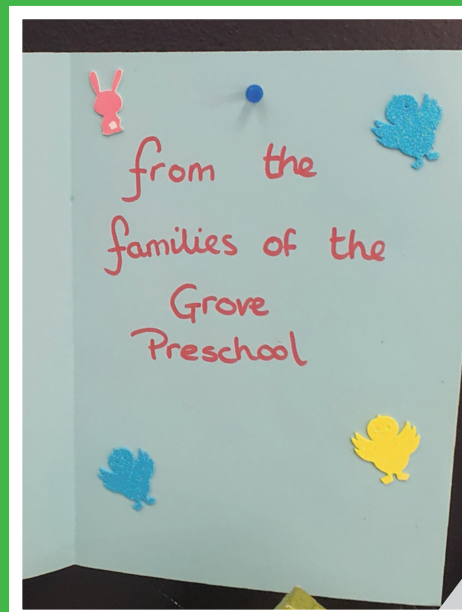
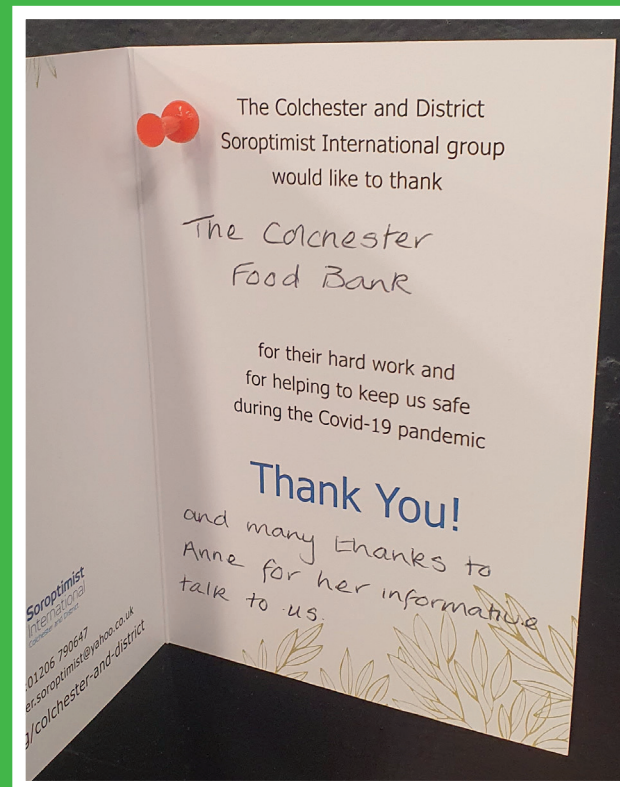
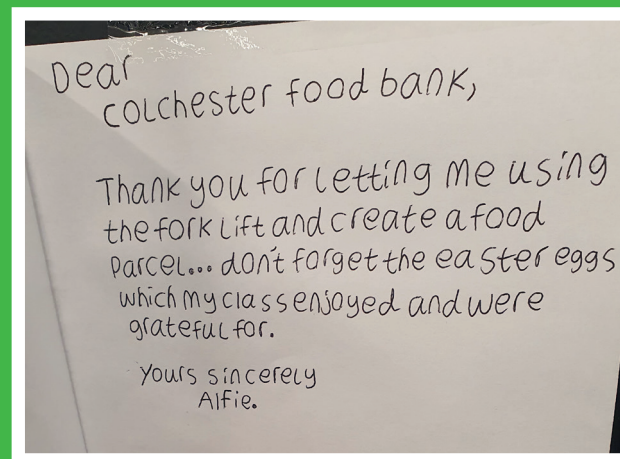
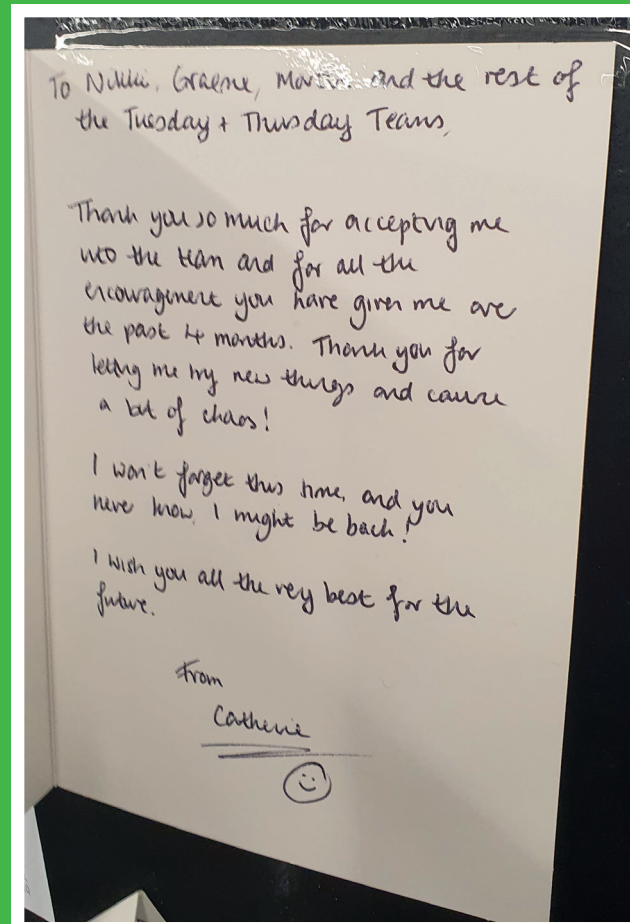
We led the Essex Food Poverty Alliance in securing grant funding of £22,500 from DEFRA which was spent on emergency food aid across Essex in the wake of the CoVid-19 lockdown to directly tackle food poverty in Essex. We are grateful to DEFRA and the other foodbanks and emergency food aid charities with whom we worked in partnership for their support in making this happen.





# OUR IMPACT

## BIG THANKS YOUS TO THE FOODBANK





# OUR ORGANISATIONAL STRUCTURE

## OUR COLCHESTER FOODBANK CHARITY'S PATRONS:

The Right Reverend Roger Morris  
the Bishop of Colchester.  
Sir Bob Russell  
the High Steward of Colchester Borough.

## OUR SPECIALIST ADVISORS TO THE TRUSTEES:

Minute Secretary: **Paul Rusiecki** (historian).  
Honorary Treasurer: **Clive Joyce**  
(retired accountant).  
Communications Advisor: **Kim Moore** (marketeer).  
Trussell Trust: **Rebekah Hill** (Area Manager) [during 2021 **Colin Burcombe** is providing Maternity cover].

## OUR AWARDS:

Colchester Borough Council's community recognition award 2021  
Colchester Borough Council's community recognition award 2020 (Colchester and Greenstead Foodbanks)  
Small charity winner of the Charities Against Fraud Award 2018 for excellence in tackling fraud against charities.  
Colchester Soup winner 2016

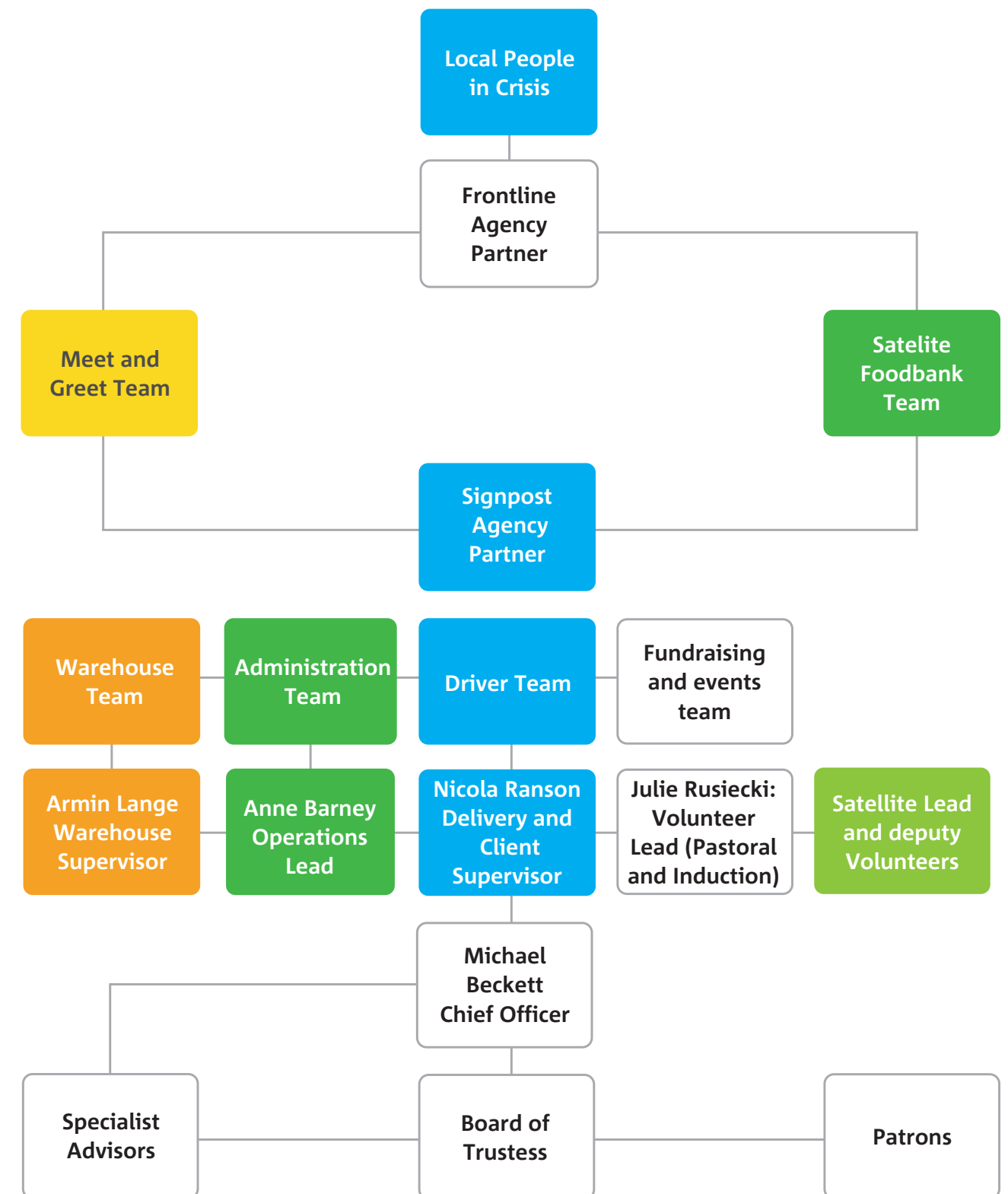
## OUR STAFF:

Chief Officer: **Michael Beckett BA(Hons) DiploD MloD**  
Client and Delivery Supervisor: **Nikki Ranson**  
Warehouse Supervisor: **Armin Lange**

## OUR MEMBERSHIPS:

We are affiliated to the Trussell Trust  
We are affiliated to Citizens UK  
Colchester Citizens  
Colchester Food Poverty Alliance  
Essex Food Poverty Alliance  
Essex Alliance  
Small Charities Coalition  
The Foundation for Social Improvement  
National Council for Voluntary Organisations

## Organisational Chart







## OUR GOVERNANCE

**COLCHESTER FOODBANK CHARITY WAS THE 33RD FOODBANK IN THE UK TO BE FORMED AND HAS A BOARD OF TRUSTEES TO HOLD THE CHARITY TO ACCOUNT AND PROVIDE STRATEGIC DIRECTION FOR OUR ANTI-POVERTY CHARITY.**



### OUR CHAIR: REV ANDREW FORDYCE MBE

Andrew is Rector at the Tenpenny villages Benefice and is married to Cathy with 2 daughters - Isobelle and Abigail.

In 2008 I started a journey of faith to see if we could do something to address an economic downturn, and the Trussell Trust model seemed the best fit.

After conversations across the Churches and with Hilary Le Seve and Brian Ford, we launched at the end of 2009. I continue to feel it's a privilege to be associated with Colchester Foodbank and have been amazed by the changes and wonderful people who have supported it. October 2019 marked ten years of Foodbank provision but since then we have had the challenge of navigating the Pandemic.

The tireless resolve of our volunteer teams and dedicated staff has been truly remarkable. Our demand had gone up and amazingly not only have we met the demand but we have grown with more Satellites and a move to Stanway. Well done everyone - you are amazing!

### OUR DEPUTY CHAIR:



### RICHARD PRIEST

My name is Richard Priest, and I was born in Colchester Military Hospital in 1972. I have lived in Colchester most of my life although I now live in Tendring by the sea. I am married and have three children, one son and two daughters. I have been actively involved in serving people all my life. I have run various clubs and societies, mainly for young people. I was chairman of Colchester Korban, a local homelessness charity. Until 2018 I worked for a large registered social landlord called Peabody, and was responsible for services in the County which include homelessness accommodation, vulnerable families, young people services, floating support, acquired brain injury services, learning disability services and mental health. I have worked

as a support worker delivering front line services to all of these client groups, and as a manager at various different grades. I had the privilege of being the director of these services in Essex. I bring to the Foodbank strategic planning, some legal compliance in terms of HR, health and safety, building management etc. but also strategic planning regarding finance and governance. I also bring a wealth of general knowledge about our sector in understanding and supporting vulnerable people. On a personal level I am a Christian and my faith means a great deal to me. Many of the people I have supported use the foodbank and it makes such a tremendous difference to people as you all know. Not just the obvious practical benefits of some food for the family but often people have multiple issues going on and this takes a lot of pressure off them and I know that the act of kindness and generosity that we facilitate is a very meaningful and gratefully received experience for our customers. Homelessness is on the rise and things are certainly going to get tougher. Foodbank needs to be ready for what will come and carefully consider their remit now and in the future. In 2019 I supported the Foodbank to find a new Warehouse and community Hub which enhanced its ability to serve vulnerable people and freed up resources to extend its reach and offering.



# OUR TRUSTEES



## TRUSTEE JULIE RUSIECKI

I was born in Colchester where I lived with my family until 1969 when I left to read History and Politics at Sheffield University. When I graduated in 1972, I added a husband, Paul, as well as an Honours Degree. I taught in London as a History and Humanities at Secondary level, where I became acting Head of the History Department and Head of Sixth Form. We left London for the birth of our son, Marcus, in 1978 and returned to Colchester. Paul became Head of History and Examinations at East Bergholt High and I had a daughter, Helen, in 1980. I ran a Playgroup before becoming Head of the Constantine Road Nursery School, and returned to full-time teaching as a Primary teacher, where, apart from a short break, I remained until my retirement seven years ago. I am a member of St Anne's church and have been actively involved in the Foodbank as a volunteer for many years. When Paul and I retired, we chose, as Christians, to use our time to benefit others. I would describe myself as 'a people person' and my skills all revolve around that perception. I am always prepared to listen, will offer advice if it asked for – and sometimes when it is not – (a relic of the bossy teacher I'm afraid), but I love to serve and have a great respect for all the people I meet and know. My hobbies include baking, cake-making and organising community events. I'm a bit arty and crafty, love to dabble in the garden and think I can arrange flowers - as long as wild and over-the-top is all that is required. I enjoy archaeology, Ancient History and my favourite film is 'Lord of the Rings'! I chose to become a Trustee for Colchester Foodbank, not because I know better than anyone else, but because I believe in the value of the work the Foodbank does in the community. If I can contribute to the success of this wonderful venture, then it is time and effort well spent and I am privileged to be part of it.



## TRUSTEE REV CAROLINE BECKETT

My name is Rev. Caroline Beckett and I am vicar of All Saints & St. James, Brightlingsea and outgoing Chair of 'Colchester Citizens' (an alliance of local civic sector organisations such as faith groups, educational establishments, unions and charities, part of Citizens UK), and a trustee of another charity 'Gifts For Romania' working with community leaders to combat poverty and isolation in rural communities. I am mum to two lovely teenagers – Danielle who is one of Foodbank's Young Ambassadors and Thomas. I enjoy singing, writing, spending time with loved ones, long walks in the countryside, sailing and volunteer work. I love being a minister because I get to meet so many extraordinary and interesting people and have the privilege of helping those going through difficult times and sharing in the joy of those who are celebrating. Being the widow of Rev. Rhys Martin, a local minister for a decade, and born in Old Heath and growing up in Alresford and now working in Brightlingsea, I have lived in the Colchester area on and off for most of my life, so I know it quite well. For me, Foodbank is good news in action: doing on a grand scale what some of us used to do from our home kitchens for people in need; reaching so many who are going through a vulnerable time in their lives. It's sobering to think we are all only a few months' salary away from a food parcel. Life is fragile, beautiful, challenging and tough and we are all in it together. It's been lovely to meet so many of the Foodbank volunteers and to be part of this important work in our community. Feeding the hungry is central to my faith but what we do in Foodbank goes beyond supplying food to enabling people to transform their circumstances.



## TRUSTEE MARK NORRINGTON

Volunteer Coordinator at Wivenhoe. Essex born and raised who decided when moving to Wivenhoe after too many years commuting to work in London that he wanted to get involved in his local community. In addition to volunteering at the foodbank this has also included working as a volunteer with the library service, helping out with the local Reaching out at Christmas initiative, work for local community hub in Thurrock and on the Steering Group for the Wivenhoe Neighbourhood Plan.



## TRUSTEE AND JOINT PATRON SIR BOB RUSSELL

Sir Robert Edward Russell is a former Member of Parliament for Colchester. He was knighted in the 2012 New Year Honours for public service. Bob holds the ceremonial position of High Steward of Colchester. Bob was a Councillor representing New Town with 31 years' service. He also served as Mayor of Colchester and Leader of Colchester Borough Council. Bob is a long term supporter of Colchester Foodbank and is keen for it to go from strength to strength.



## TRUSTEE WIN POMROY

Win is the Lead volunteer at Brightlingsea Foodbank, who used to work for the NHS as an emergency nurse practitioner in the Accident & Emergency department at Colchester General Hospital. Win began volunteering because she wanted to give something back to the community. Win belongs to the Ladies of the Liberty, which supports the historic charity of the Cinque Port Liberty of Brightlingsea.



## TRUSTEE JO SANTINELLI

Jo is married with two grown up children. She trained as an RE teacher in Brentwood before becoming an Assistant Head, and then the Deputy Head with responsibility for pastoral care and teaching and learning. Jo took up headship at St Benedict's in Colchester in February 2012. She feels it is a privilege to serve and be part of the local community and she is keen to support the superb work of the Colchester Foodbank in some small way.

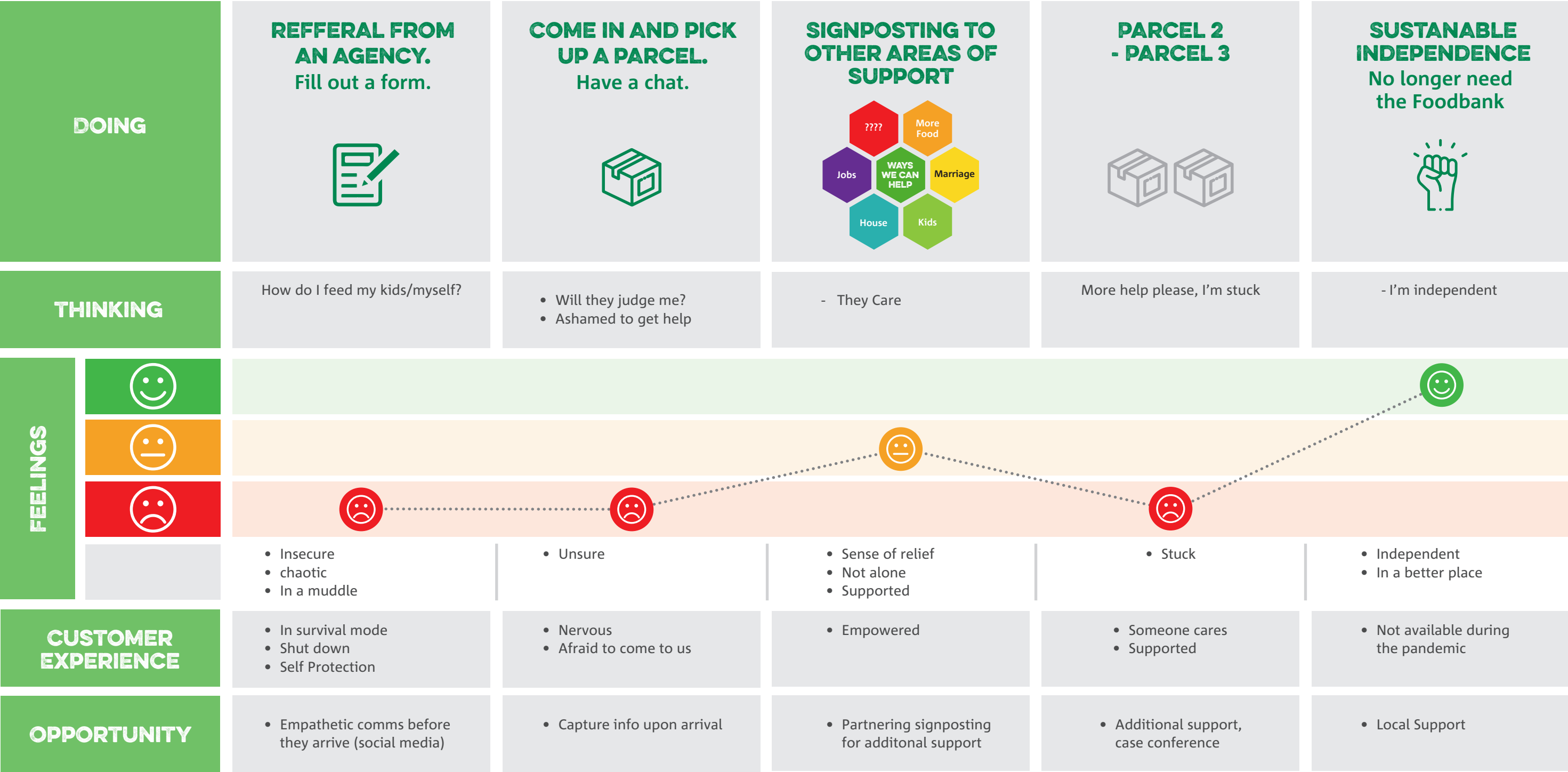


## REV KEN THOM

Rev Ken Thom holds the Joint Pastorate for Kelvedon and Tiptree United Reformed Churches since 2012. In 2018 Ken became the Chair of the Management Committee of North Avenue Youth Centre. I have a passionate concern for the needs of the whole person, both physically and spiritually, and it has been a privilege to be involved with Colchester Foodbank and in particular getting our local Foodbank in Tiptree up and running. As a hobby I sort and sell postcards to raise funds for MAF.



# CUSTOMER JOURNEY

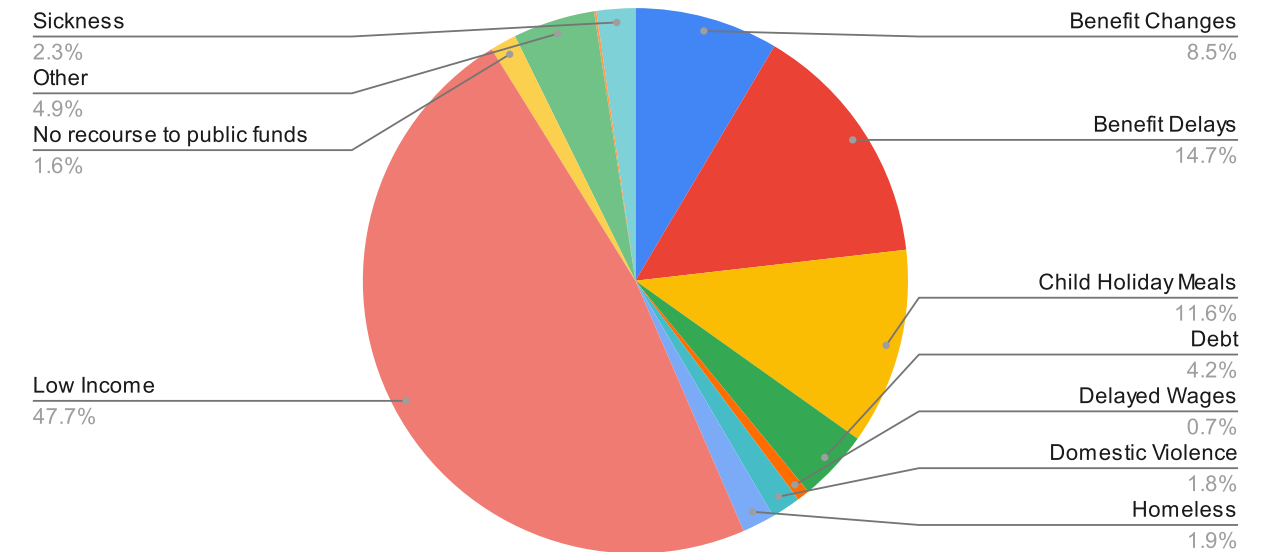




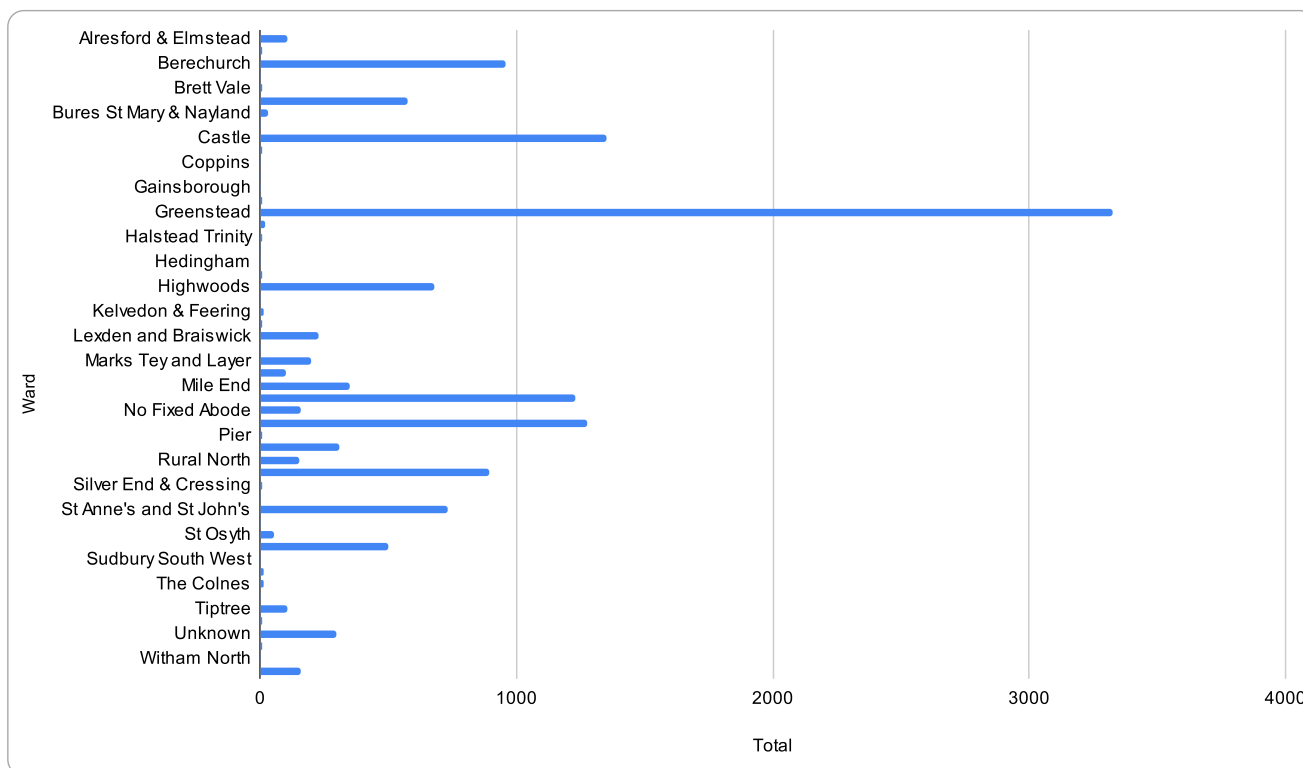
# VOUCHER REPORT

JANUARY 1, 2020 - DECEMBER 31, 2020  
REPORTING PERIOD JANUARY - DECEMBER

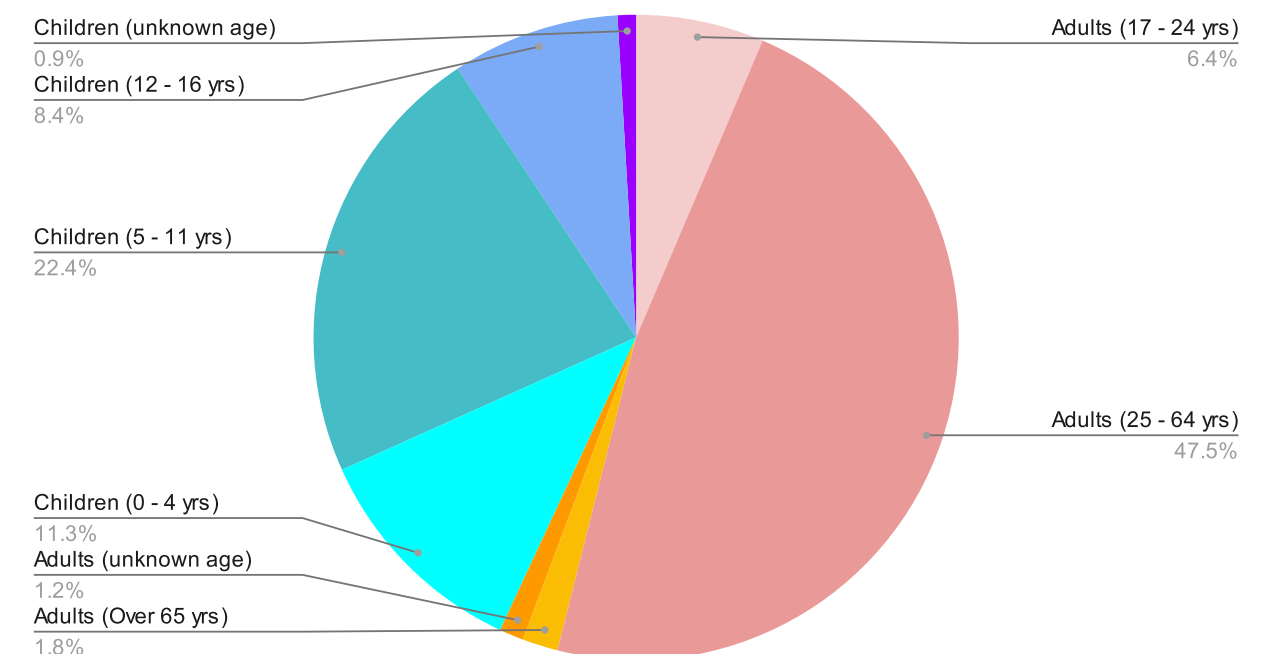
## REASONS GIVEN FOR PEOPLE BEING IN CRISIS IN 2020



## WHERE EMERGENCY FOOD VOUCHERS WERE ISSUED IN 2020



## HOW OLD WERE THOSE WE HELPED IN 2020?





# OUR SITES

**DURING THE LAST CHALLENGING AND UNCERTAIN YEAR MANY GOOD THINGS HAVE HAPPENED WITH REGARD TO SATELLITES.**

**The idea of having Satellites situated at certain prime areas of need in Colchester was to save clients having to travel initially to Moorside and then Tollgate ..which for some has proved either quite expensive or difficult for carrying the food parcel home.**

Over the past year new satellites have been set up, volunteers trained and clients have received much needed food parcels, in addition to existing satellites in Greenstead, (which has become busier and as a result is now open four sessions a week). Local Councillors are regular visitors at the satellite where they provide support. As well as satellites in Wivenhoe, Brightlingsea and Greenstead, we have partnered with and now supply Tiptree Churches Foodbank and set up new satellites in Newtown, Monkwick, Shrub End, Colchester Central Foodbank with Open Door and Rowhedge (Mariners Chapel).

Rowhedge have been very proactive by leafletting the whole area and working closely with St Lawrence Primary School. Although open on a Monday evening, Volunteers deliver during the week where there has been a request. New Town at Stephens Church Centre, decided to open twice a week , once in the evening and the other during a morning, this was to give more clients an opportunity to get food parcels. Monkwick with Berechurch at St Margaret’s Church Hall have had training on budgeting led by their Lead Volunteer, Mark to support clients. Essex Uniform Exchange and Tots for Teens have been available for clients. Cllr Dave Harris has attended sessions so that clients can discuss any matters. Monkwick also distributed parcels referred by schools during a school holiday.

Central Satellite held at Eld Lane Baptist Church has been increasingly busy because of its central location as well as serving the homeless who were rehoused in local hotels. There is a good link with Open Door. Shrub End, at St Cedd’s Church, was opened during the pandemic to meet additional need when travel was difficult and then because of lack of clients visiting, closed in early Spring 2021. During the time they were open, they gave out parcels during the school holidays and held an Essex Uniform Exchange session for parents whilst they collected their food parcels. A big thank you goes to the volunteers who were responsible for the making up of just under 800 Christmas parcels. Stanway satellite opened, at St Andrews Hall, but closed when it amalgamated with Tollgate, and we welcomed the volunteers to join the Tollgate teams.

Agencies are increasing their awareness of the various satellites and are now referring clients to a satellite near to where the clients live. During the last few months, there have been meetings at Highwoods to set up a satellite in St John’s Hall at the back of Tescos and also at Myland Church. Myland volunteers have attended their first training session and hope to open in early September twice a week.



**OUR THANKS GO TO ALL THE SATELLITE LEADS AND THE VOLUNTEERS FOR GIVING UP THEIR TIME TO SUPPORT THE NEEDS OF THOSE IN THEIR LOCAL COMMUNITY.**



## NEW SATELLITES

New Satellites data collected since the first month that their satellite opened and data was collected and recorded on the Trussell Trust system to the end of June 2021

Satellite Name	Start Date 2020	Adults Fed	Children Fed	Total
Monkwick	October	99	54	153
Shrub End	August	35	49	84
New Town	October	46	23	69
Rowhedge	Nov/Dec	97	165	262
Central	Nov/Dec	315	91	406
Tiptree*	Oct	90	77	167

\*From when they joined with Colchester Foodbank

## EXISTING SATELLITES

Satellite Name	Jan 1 <sup>st</sup> 2000 - Dec 31 <sup>st</sup> 2000			Jan 2021 - June 30 <sup>th</sup> 2021		
	Adults	Children	Total	Adults	Children	Total
Brightlingsea	428	301	729	288	229	517
Greenstead	663	452	1115	576	420	996
Wivenhoe	57	24	81	27	22	49

**SPECIAL MENTION TO :**

**ST CEDDS SHRUB END (SHRUB END FOODBANK), CHRISTCHURCH, SAINT MARGARETS BERECHURCH AND WIMPOLE ROAD METHODIST CHURCH FOR SPACE TO HELP US DURING THE COVID-19 PANDEMIC LOCKDOWN.**



## Our Sites

### 1. TIPTREE

United Reformed Church, Chapel Rd,  
Tiptree, Colchester CO5 0HP  
Thursday 2pm - 4pm



### 2. STANWAY

Unit 3 Tollgate Retail Park  
(old Office World shop)  
Stanway CO3 8RG  
Tuesday 11am - 1pm



### 3. MONKWICK

St Margaret's Church Hall,  
Stansted Road,  
CO2 8RA  
Friday 11am - 1pm



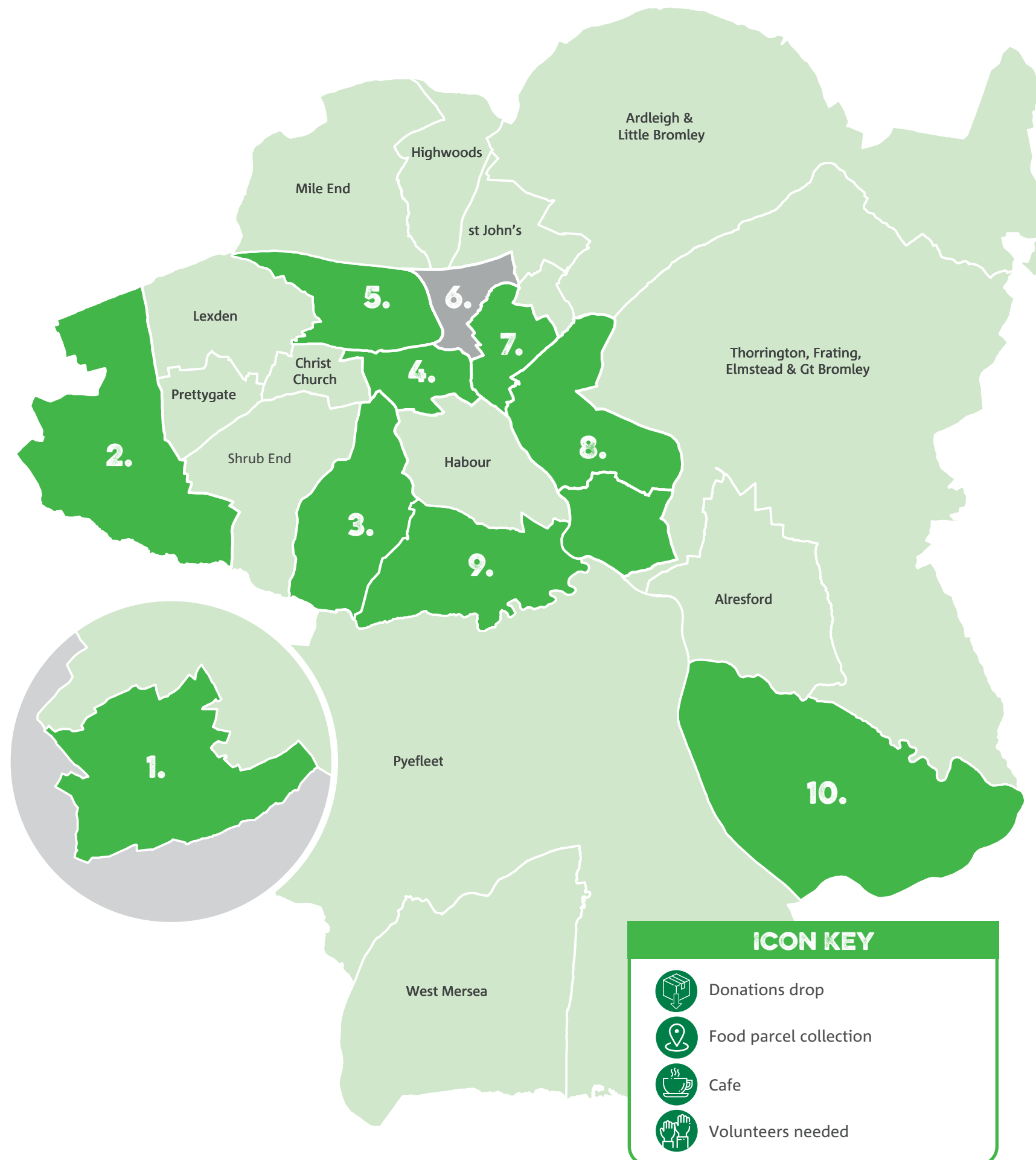
### 4. NEW TOWN

St Stephen's Church Canterbury Road,  
Colchester, CO2 7RY  
Monday 7:30pm - 8:30pm  
Thursday 11am - 1pm



### 5. COLCHESTER CENTRAL

Eld Lane Baptist Church,  
Eld Lane, CO1 1LS  
Wednesday and Friday  
11am - 1pm



#### ICON KEY

- Donations drop
- Food parcel collection
- Cafe
- Volunteers needed

### 6. MOORSIDE

Closed, we've moved to Stanway

### 7. GREENSTEAD

Colchester Credit Union  
7 The Centre, Hawthorn Avenue,  
Colchester, Essex, CO4 3PX  
Monday, Tuesday, Thursday  
and Friday 10am - 12 noon



### 8. WIVENHOE

Wivenhoe Congregational Church,  
High Street, Wivenhoe,  
Essex, CO7 9AB  
Thursday 10am - 12 noon



### 9. ROWHEDGE

Mariners Chapel  
Chapel Lane  
Rowhedge, CO5 7JS  
Monday 4pm - 6pm



### 10. BRIGHTLINGSEA

Local delivery only during lockdown  
01206 3033903 or 07970 480968  
Wednesday 10am - 12:30pm





## CENTRAL OPENING



## STANWAY OPENING



## MONKWICK OPENING



## ROWHEDGE OPENING





# PUBLIC RELATIONS REPORT

Colchester Foodbank is the most 'liked' Foodbank on Facebook in the UK and has built a large online presence. This really helped during the pandemic as it kept us in touch with our supporters, who were wonderfully responsive.

We also enjoyed a good working relationship with various online community groups. Many of our supporters use Facebook to run birthday fundraisers for us - a wonderfully generous act.

Our last AGM was, like this year's, a hybrid: some participants arriving by Zoom while others were in the venue. This enabled us to publish proceedings as a video afterwards, giving access to a wider group of people than usual.

Unable to visit organisations to give talks or have organisations visiting us during lockdown, we have made more use of video, producing a video of thanks and updates, and having fun with our own lockdown song, 'Sweet Quarantine' (with apologies to Neil Diamond). This was recorded with volunteers in Moorside and was featured in the East Anglian Daily Times. It raised us £645 online, put smiles on lots of faces and was viewed in excess of 11,000 times!


We have appeared in local news regularly, both in newspapers and on the radio, as well as on local and national television. Our volunteers even had a cameo appearance alongside Olympic and sporting greats in the national 'Together At Home' video. Big Picture films produced a fantastic video for us, premiered at our last AGM.

With Covid19 restrictions lifting and visits and talks resuming, we will continue spreading our message, gathering supporters, de-stigmatising Foodbank use and busting the myths around poverty and daily life.

**EAST ANGLIAN DAILY TIMES**  [LOG IN](#)

## WATCH: Foodbank's hilarious 'sweet quarantine' video after busiest week ever

 Sophie Barnett

Published: 11:18 AM March 29, 2020 Updated: 6:45 PM October 11, 2020



Colchester Foodbank has received more than 11,000 views on its 'sweet quarantine' video on Facebook.  
Picture: COLCHESTER FOODBANK - Credit: COLCHESTER FOODBANK





# A BIG THANK YOU!

We wish to thank all those who have donated to the foodbank anonymously or individually.

## BIG PICTURE CHARITY FILMS

## COLCHESTER BOROUGH HOMES

## COSMIC PUFFIN MUSIC FESTIVAL

## FOWLER SMITH AND JONES

## GLENN TILBROOK

## HISCOX INSURANCE

**JS CREATIVE** for the 10 year anniversary logo, thank you Jonathan.

## KIM MOORE

## NATIVE PROMOTIONS

## STARBARGAINS AND FULTONS FOODS

**THE DEPUTY OF BRIGHTLINGSEA**, Frank Pomroy

**THE MAYOR OF COLCHESTER 2019/20**, Cllr Nick Cope

**THE MAYOR OF COLCHESTER 2020/21**, Cllr Robert Davison

## TOLLGATE PARTNERSHIP

## DUNCAN CLARK & BECKETT ARCHITECTS

**WE ESPECIALLY WISH TO SAY THANK YOU TO THE MANY PEOPLE WHO DONATED AND WISHED TO REMAIN ANONYMOUS.**

7th Colchester Cub Scouts  
1st Myland Guides  
1st West Bergholt Brownies  
28th Sea Scouts  
2nd Myland Brownies  
2nd Myland Guidess  
7th Colchester Cub Scouts  
30th Colchester Beavers  
Abbots Road Coop  
ACE District Nursing Team  
ACTIV Essex  
Adult Social Care  
Aldi London Road  
Aldo Cowdray Ave  
All Saints Church  
All Saints and St James Brightlingsea  
All Saints Church Gt Horksley  
Alresford Church  
Alstons  
ARGOS  
Army  
ASDA Turner Rise  
ASDA Tiptree  
Atlantis Health and Beauty  
B&M  
Beacon House  
Berechurch Neighbourhood Watch  
Birch School & Caterpillars Pre School.  
Bishop William Ward School  
Black Cat Bakes  
Blenheim Park Residents  
Blossoms Pre School  
Boaz Project  
Bookers  
Boxted Primary School  
Boydens  
Braintree Foodbank  
Braiswick Primary School  
Brightlingsea Allotments  
Brightlingsea Community  
Brightlingsea Coop  
Brightlingsea Foodbank  
Brightlingsea Junior School  
Brightlingsea SPAR  
Brightlingsea Fareshare  
British Legion  
Bromley Borough  
Brotherhood of the Cross  
Bures Primary School  
Cadburys  
CAP  
Castle Methodist Church  
Centurion Rotary  
CGM LTD McDonalds  
Channel Central  
Chapel URC

Charlie's Bar  
Cherry Tree Primary School  
Cherry Orchard Hens  
Chestnut Nursery  
Christ Church Cof E  
Church of Latter Day Saints  
Clacton Evangelical Church  
Clare Carrdus Richmond  
Cllr Helen Chuah  
Cllr Lyn Barton  
Cllr Dave Harris  
Cllr Tim Young  
Coggeshall Scouts & guides  
Colchester Academy  
Colchester & East Essex Cricket Club  
Colchester Boot Camp  
Colchester Borough Council  
Colchester Cat Rescue  
Colchester County High School  
Colchester High School  
Colchester Hospital  
Colchester Hospital Shop  
Colchester Institute  
Colchester Libraries  
Colchester Police  
Colchester Police Cadets  
Colchester Royal Grammar School  
Colchester SAI Group  
Colchester Seventh Day Evangelists  
Colchester Soroptimists  
Colchester United Football  
Colgate  
Colne Community School  
Community Voluntary Services Tendring  
Community 360  
Coop Dedham  
Coop Fiveways  
Coop Greenstead  
Coop Harwich Road  
Coop Icen Way  
Coop Myland  
Coop Old Heath  
Coop Perttygate  
Coop Rowhedge  
Coop West Bergholt  
Coop Wimpole Road  
Coop Wivenhoe  
Copford Primary School  
Country Food Trust  
Courtyard Stores  
CSH  
Currys  
Curzon Cinema  
Dedham and Stratford Community  
Dedham Cof E Church  
Dedham Cof E School



DIESSE LTD Daniel Connal Partnership  
 Dealmaker London  
 East of Englad Coop  
 East Mersea Church  
 Ellen Petersen  
 Essex Adoption Team  
 Essex County Council  
 Essex CRC  
 Essex University  
 EUROVIQ  
 EVO Skaters  
 Evans Motors (Van repairs)  
 Fairfields Farm  
 FARE SHARE  
 Fennicks  
 First Bus  
 First Site  
 Fiveways Primary School  
 Fordham & Eight Ash Green Church  
 Fordham Community  
 Friars Grove Primary  
 Giles of Alresford  
 Glemsford Baby Bank  
 Go Bananas  
 Go4 Cafe  
 Gt Bentley Community  
 Great Little Smiles Nursery  
 Greenstead Free Church  
 Greenstead Foodbank  
 Greenstead Social Club  
 Greenwich Foodbank  
 Grove Pre School  
 Handelsbanken Bank  
 Happy Homes Farm  
 Headgate Theatre  
 Heathlands School  
 Helping Kids  
 Higham Village  
 Highwoods Country PARK  
 Hiscox  
 Holt Farm  
 Holly Beddoes  
 Holy Trinity School  
 Home Farm School  
 Homes for Students  
 Hospital League of Friends  
 HSBC Bank  
 Iceland  
 Icen Academy  
 INCODIA International  
 Ireton Road Neighbourhood  
 Iris Sebba  
 Jaye Gibbons  
 Jay wick Foodbnak  
 John Fenn Open Reach  
 John Fowler Solicitor

Jollyes Pet Foods  
 Juddith Gibbons  
 Kendal Primary School  
 Kent & Blaxill  
 Kingsford Infant School  
 Kingsland Church  
 Knights of Columbia  
 Lakeland Primary School  
 Langenhoe & Abberton Shop  
 Langenhoe School  
 Langham & Boxted Church  
 Langham Ward  
 Layer de la Haye Church  
 Layer Pre School  
 Leavenheath Community  
 Lidl Abbotts Road  
 Lidl Gosbecks Road  
 Linklaters  
 Lion Walk URC  
 Little Bentley Service Station  
 London Road Vets  
 Make Lunch Mile End  
 Mariners Chapel  
 Marks and Spencer  
 Martins of Alresford  
 MC Colls Monkwick  
 Mercers Farm Allotments  
 Mersea Beaver Scouts  
 Mersea Bowls Club  
 Messing Primary School  
 Millfield School  
 Mobile Greengrocer  
 Mobile Mini Manningtree  
 Monkwick Infants School  
 Monkwick Foodbank  
 Morrisons Clacton  
 Mr Singh  
 Munch Club  
 National Trust East Bergholt  
 NAT WEST Bank  
 Nayland Primary School  
 North East Essex Coop Academy  
 NEXT  
 Night Shelter  
 North Primary School  
 Norwegian Bakery  
 Oak Tree Centre  
 One Stop Kelvedon  
 One Stop Plume Avenue  
 Open Road  
 Oracle Dental Group  
 Orchard Baptist Church  
 Orchard Barn Kindergarten  
 Panther Cabs  
 Paxman Academy  
 Peabody

Perrywoods Garden Centre  
 Pizza Express  
 Play House Pub  
 Plume Avenue Church  
 Porsche Cars  
 Primark Stores  
 Probation Service  
 Queen Boudica Primary  
 Redeemer Church  
 RELY-A-BULL Finance  
 REMFRESH  
 RHQ Parachute Regiment  
 Ribena Lucozade  
 Roach Vale Primary  
 Robert Prince  
 Roller World  
 Rowhedge Community  
 Rowhedge Pre School  
 Rowhedge Primary School  
 Runnymede Care Home  
 Sainsburys Drury Road  
 Sainsburys Priory Walk  
 Sainsburys Tollgate  
 Salisbury Ave Residents  
 Santa Run  
 Shoebox Celebration Appeal  
 Shorts of Brightlingsea  
 Shrub End Foodbank  
 Sixth Form College  
 Sodexo  
 Squirrels Field Close  
 SRC Aggregates  
 Stanway Parish Council  
 Stanway Guides  
 St Andrews Greenstead  
 St Anne's Greenstead  
 St Benedict's College  
 St Botolphs Church  
 St Georges Junior School  
 St Stephens New Town  
 St Helena School  
 St James & St Sabeena Church  
 St James & St Barnabus  
 St James Primary School  
 St John Payne Ladies  
 St John the Baptist Layer  
 St Johns Primary School  
 St Leonards Church  
 St Margarets Church  
 St Marys Ardleigh  
 St Marys Primary School Ardeligh  
 Stanway Primary School  
 Stanway Rovers  
 Stratford St Mary Church  
 TANGENT  
 Teech- GFM Clear

Tendring District Council  
 Tendring Elder Care  
 Tesco Brightlingsea  
 Tesco Clacton  
 Tesco Covid 19  
 Tesco FARE SHARE  
 Tesco Highwoods  
 Tesco Hythe  
 Tesco Mersea  
 Tesco online  
 Tesco Tiptree  
 The Alma  
 The Ark  
 The Gilbert School  
 The Hygiene Bank  
 The Maltings  
 Thomas Lord Audley School  
 Tiptree Community  
 Tiptree Foodbank  
 TKMAX  
 Tollesbury Congregational Church  
 TSP Solicitors  
 Unity Primary Academy  
 Victoria Residents Assc  
 Waitrose  
 Walnut Drive Residents  
 Wilco  
 Wilkins Jam  
 Wimpole Road Methodist Church  
 Wivenhoe Allotment Assc  
 Wivenhoe Bookshop  
 Wivenhoe Community Group  
 Wivenhoe Corsairs Rowing Club  
 Wivenhoe Foodbank  
 Wivenhoe House  
 Wivenhoe Park Nursery  
 YMCA  
 Youth Enquiry Service



# RE:FOCUS



## THE BACKGROUND

Back in March 2020, Des and I saw a huge need to help children and families adversely affected by the pandemic by providing free craft and activity packs. I was so aware of this need, as a then trainee Play Therapist and working with adults with educational needs. Being in lockdown and viewing the needs from a worst-case scenario could very easily mean that children wouldn't have access to any play, any way to be creative, any educational help, despite packs being sent out to children from schools.

It could very much equate to situations where the child was ignored, told having them at home meant that parents couldn't do what they wanted to do, not played with, had little/very little in the way of toys, pens, pencils, paper. If an adult themselves had difficulty in reading and writing, they would struggle to help their child/children. What about food? So much went through my head. I decided from the outset that I would make these bags completely free; if people wanted to give anything, I directed them to Colchester Foodbank, but I stipulated to only give if they were able to give. I had many cases

where a single item was offered but I said no because giving away that single item could easily mean the family would have nothing to eat. So, I started with what I had indoors; craft materials, paper as my work involves using sensory and craft products. From here, I scoured charity shops for material and wool, "cheap" shops for paper plates, straws, etc. Our initial list was as follows:

### Your Crafty Bag contains

- Paper plates and /or paper bowls
- Pegs (Wooden/plastic)
- Label/s
- Paper straws
- Mini pots
- Sellotape and/or glue stick
- Sponge
- Sock(s)
- Dishcloth
- Decorative bits and pieces
- Some kind of glitter!
- Envelope
- Ribbon
- Craft paper
- Something tasty!



### So what can you make?

- Peg puppets
- Paper plate masks - cut your plate in 2 to make 2!
- Family tree - you'll need a branch with twigs, your lable, which you can use as a template and colouring pens. Drawe or write baout yourself and dispaly it on your "tree"!
- Sock puppet
- Paper envelope puppet
- Use your mini pots to grow some seeds or they can become puppets as well!
- Cut your songe into shapes and use as a paint stamper.
- Make a mini construction with the straws
- Have a fave toy? Make a hammock for them with your dishcloth and straws!

When I asked on Face Book if anyone would be interested, my phone did not stop pinging! Our first batch of orders was for 30 bags, which equated to 66 children. The next order was for 121!

We were so blessed to have, from the beginning, our friend Tamara Hodgson-May who took on the huge task of making mixed paper bundles, material bundles and mixed wool and ribbon bags. More and more donations came in, which meant that each bag was filled with so many

wonderful goodies. When all the bags were "quality control" checked, more goodies would be sprinkled in

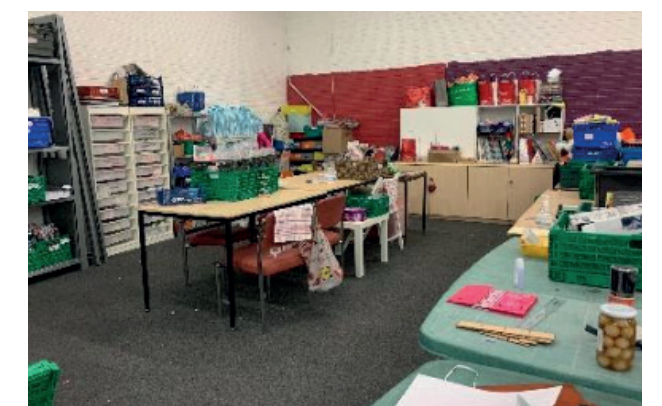
We called this "Focus Crafty Wise" and sent out over 450 packs! These packs were for single children going all the way up to families of 9. Then we were asked if we did packs for adults... and the demand for bags continued to grow.

In June 2020 we teamed up with Jenny, Catherine, Aitch and Ben and the project grew into "Re:Focus".

We knew that our focus in relation to mental health and well-being needed to be seen from a different angle. The use art and crafts are proven to help all ages and abilities re-grow and re-develop their self-confidence.

As more orders came in, we moved 3 times in Colchester Town centre, then a move to Lifehouse Church, Colchester, for just over 3 months. Towards the end of our stay at Lifehouse, Michael asked me if we would like to have a base at the new Foodbank depot! The answer was, of course, yes!

Re:Focus continues to grow and develop, both in physical size...





**In our client list, with packs going to:**

Food Bank clients, Women's Refuge, CAP, United in Kind, local primary, and secondary schools, both mainstream and SEN, Social care, Supported living, and through links with The Salvation Army, local churches, and community groups.

We have two groups volunteer with us, Bright Lives CIC and Isola Life Skills, plus private individuals, and supported adults. Fabric Love UK provides us with free materials; Colchester Arts Society not only supplies us with willing volunteers to help us but is donating £300 to help us purchase items that we need more of (PVA glue, glitter, pencils, and pencil sharpeners) along with £500 from CBC. Most recently, after providing a local secondary school with free craft packs, we were given a surprise donation of £75!

These bags are 100% free and are funded by donations, savvy shopping, and the generosity of our volunteer team. We asked, and continue to do so, for any donations to go to Colchester Foodbank, but only if can be afforded. No-one has to pay for them. They are given freely because we have freely been given so much.

Through creativity, art, expression, and imagination, we know from testimonials that these packs have made a difference, have brought laughter and fun in a time of uncertainty. To be able to bring joy and light in the dark is a huge privilege that we will continue to cherish and grow.

**But what Re:Focus is all about is**

**Generosity:** we are given so much so we can give out so much.

**Love:** we may not know who these bags go to, but we fill them up and send them out with love. We want all ages to know that they are being thought of.

**Well-being:** the increase in the need for help for both children and adults with mental health and well-being continues to rise. The packs can maybe offer the unconscious time to process what is happening. And this relates as much to our volunteers as it does to those who receive the packs.

**Joy and laughter:** for our volunteers, coming along to the hub provides social contact, a time to talk, to be listened to and, more often than not, eat cake!

I'd like to finish with a recent message from a mother, who sums up Re:Focus perfectly.

"Thank you ever so much We really bonded over this. As he has additional needs normally he cries and gets frustrated. M said this was the best arts he ever done so thank you. He loved the feathers and loved making the 3d type pop out cards. I even got a card he made thanking me for the morning. Thank you for this. First time in 8 years he has opened up like this. I will be for ever grateful to you.

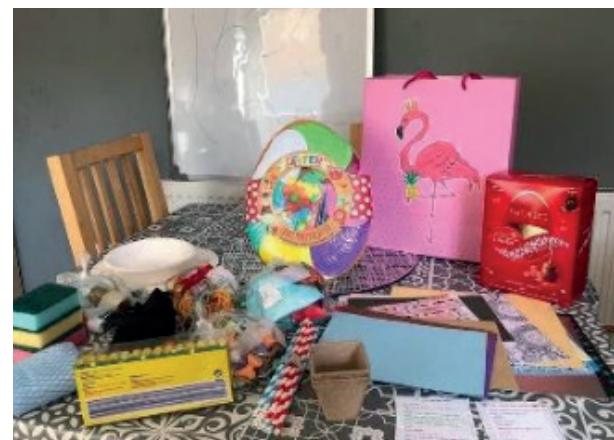
You are amazing and these bags really have helped my son Thank you from the bottom of my heart. You have opened him away to open up to me, and in a fun way. Sensory is so hard with him, trying to touch different textures and even getting glue on him And thank you.

Like many mothers we long to hear I love you, M can't express these feelings. Today he did via the arts and crafts you so kindly gifted us. 8 and half years and he wrote I love you and thank you for today. Meaning having fun with the arts and crafts. You have given me something that no doc or specialist could So thank you so so much xxx

Without Jenny, Catherine, Tamara, Sophie, Brooke, June, Catherine, Al, Sheena, Julie, Kate, Samantha, Helen and countless others, none of this would be possible. They are a huge joy to work with and I treasure them immensely"

**Paula Stubbs**

Founder and Co-Leader, Re:Focus



# ESSEX FREE SCHOOL UNIFORM 2020 REPORT





## Essex Free School Uniform 2020 Report

### General Information

Essex Free School Uniform started operating in Jan 2019 under the name of School Uniform Exchange. It aimed to facilitate exchanging second-hand uniform between parents, diminishing environmental impact and offering relief to financially strained families by reducing their spend on school uniform. Donations of unwanted uniform are collected, sorted, washed and repaired then offered to families who may need them.

Free uniform is available to everyone. Having no access criteria allows us to reach disadvantaged families who happened to slip through the loops of other support systems. We also believe stressing on general availability helps to take the stigma off accessing the support and promotes reusing and recycling.

Requests are received via various channels which accommodate a variety of needs of our customers (including telephone, email, messenger and in person orders).

They are processed by our staff and volunteers, then can be collected or delivered by carbon neutral eCargoBike company to the recipients' home address.

Main office of the Essex Free School Uniform is located at the Old Rectory, 76 East Hill, Colchester. We have several satellite hubs across Colchester and Tendring areas (see annexe 1 for the full list) where we work in partnership with likeminded organisations.

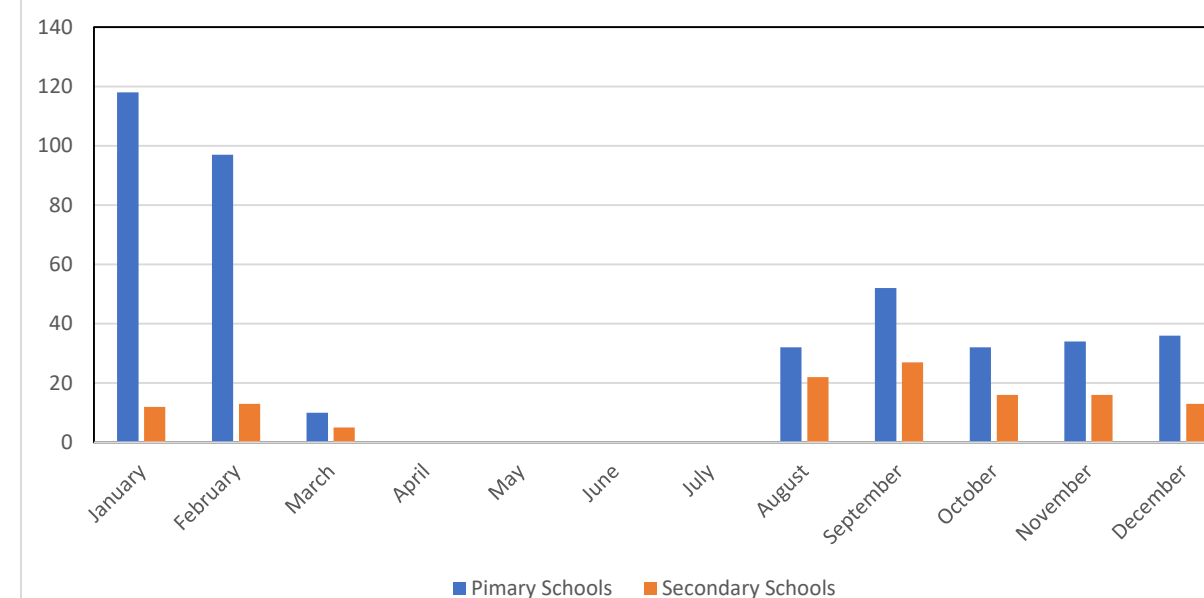
### 2020 accomplishments

It is no surprise 2020 has been strongly marked by the global pandemic and Free School Uniform has been remarkably transformed by covid related regulations introduced in March 2020.

Initially, with all schools closed and staff being furloughed, the project stopped operating. Gradually we came back to work preparing for the schools re-opening in May 2020. However, we advised our volunteers to stay safely at home which left us with a limited workforce.

The need for our service has reached very high levels, many customers admitting their budgets had been badly affected by the pandemic. Difficulties in obtaining new uniform from usual suppliers had been indicated as a major factor too. Regardless of the period of closure, challenges in staffing and limited possibilities of distribution, the number of families using our services has risen. We have given out 4776 in 2019 and 6219 in 2020 which constitutes an over 30 % increase.

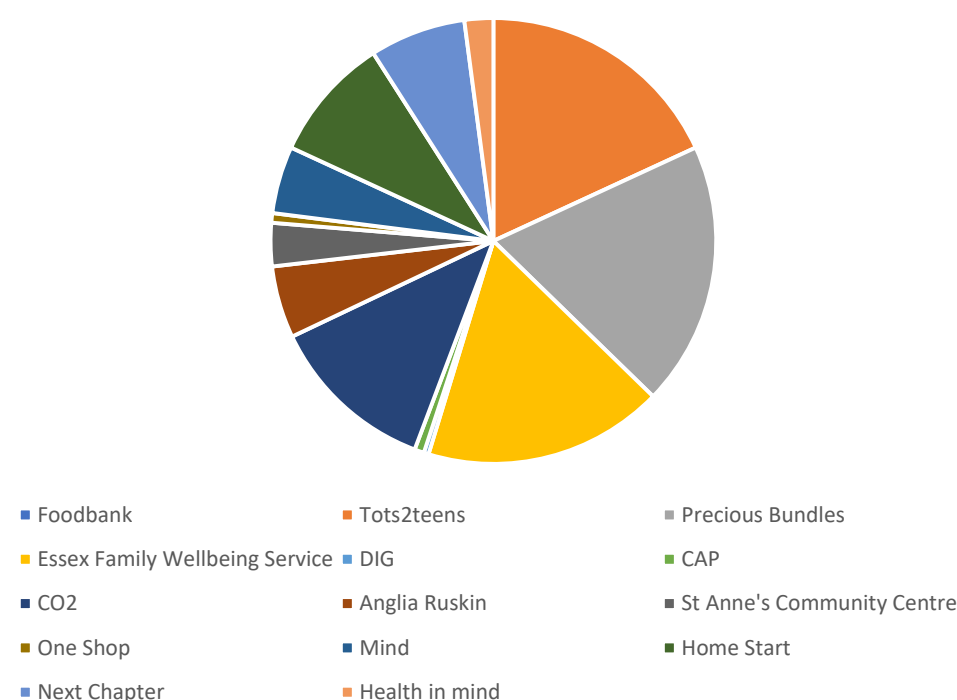
Number of families accessing the service in 2020





In 2020 we supplied uniform to 510 families, out of which 190 have been signposted or referred to Foodbank, Tots2Teens, Precious Bundles, CAP, CO2, Mind, Home Start, Next Chapter, Health in Mind and others. "You guys make such a difference" said one of the parents referred to Tots2Teens.

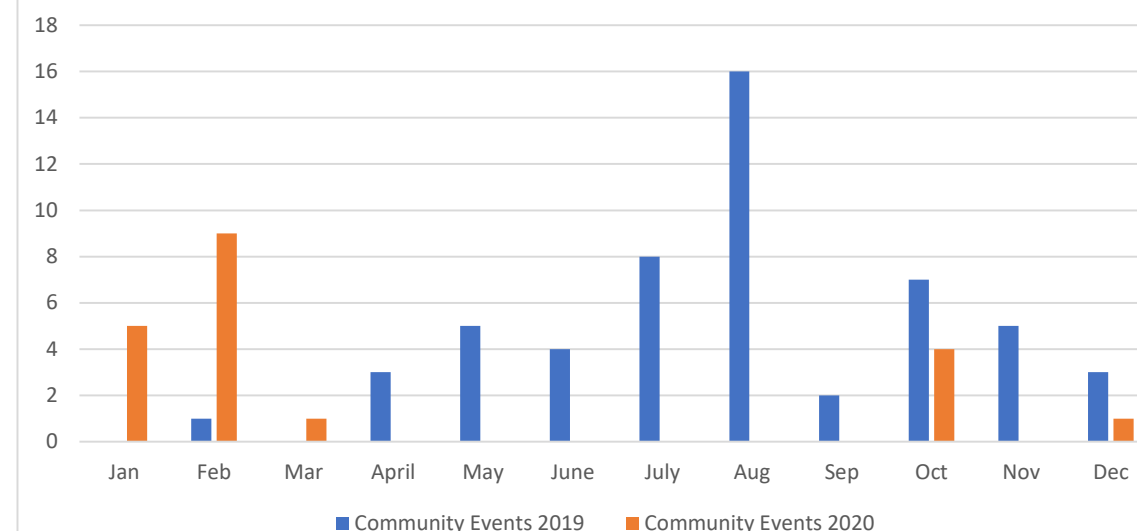
Distribution of families signposted/referred for further support



Personal data of service users has been carefully monitored to ensure we accommodate all needs and to promote the programme among those who would benefit the most out of it. Data includes comparing service users' post codes in relation to indices of deprivation map, which allows careful planning of distribution of our services.

In 2019 almost 50% of uniform was given out at our "pop up" sessions in the community. In 2020, pandemic-related regulations made it a significantly harder task to see customers at local festivals and fetes. Only 20 events took place (against 54 in 2019) and only 32% of all items of uniform distributed that year were given out during the events.

Number of community events taking place in 2019 and 2020



To compensate for the lack of "pop up" stalls we introduced a home delivery service for those unable to collect uniform from East Hill. This has proven very highly successful and led to establishing a partnership with eCargoBike company in 2021. Very positive feedback has been received from families who used the delivery option: "This is first class service." "I wish I had known about this before." "I've told all my friends about you."

#### Outlooks for future years

Essex Free School Uniform is growing in popularity and a strong network of likeminded partners is essential to maintain the increase of service users. New partnerships are being established in 2021, including partnership with Foodbank at Colchester, Tollgate, which has so far proven extremely popular with families accessing the service.

The number of items of uniform distributed in period January to August 2021 exceeded total numbers of year 2020 and continues to grow.

New volunteers are being recruited and trained, forming a strong, supportive and diverse team.

The outlook for years to come is positive and, funding permitting, further growth is undoubtable.



# TOTS2TEENS

Tots2Teens was first founded in November 2018 by Eunice Moore and me, Barbara McIntyre.



After watching a programme on Channel 4 Dispatches Born on The Breadline, we felt so moved by the programme and knew we wanted to do something to help families in need in Colchester. Eunice and I decided we would help families in need with children between the ages of 0 - 16 years by providing clothing and essentials completely free of charge.

We started off by creating a facebook page where we asked for donations of children's clothing and essentials for ages of 0 - 16 years. The community of Colchester were amazing with all their wonderful generous donations, which we would then sort, washing through clothing between both our homes. We soon became overwhelmed with donations and very little storage in our homes.

We were contacted by Jas Luard from The Family Child Well Being Services who helped us with valuable advice and guidance in starting Tots2Teens up who then introduced us to Bridget from Community 360. The first 5 months we worked solely from our homes organising sorting and then delivering to families. This soon became very busy and the demand was ever increasing. We had a meeting with Mike Beckett from the Foodbank on where our first referrals came from. From April Mike invited us to come on board with the Foodbank and operate alongside them, which we were both absolutely thrilled to do. Mike and his team have continued to be an amazing support to us over the years and we are truly thankful and blessed for all they have done.

From April 2019 we began to work from our hub within the Colchester Foodbank in Greenstead where families could come and have a chat and discuss which items they were needing. Eunice and I would then organise clothing bundles for families to come and collect. From September 2019 Eunice and I were then very kindly offered to operate a pop up hub from Colchester North Station Foodbank alongside Essex Free School Uniform too. There, we met the wonderful

Marcus from Colchester Foodbank, who was a joy to work alongside. Again families could drop in and have a chat and Eunice and I would organise clothing and essentials such as nappies wipes etc for families. Alongside this we were also delivering to families that had no means of transport.

In 2019 we helped 250 families working alongside agencies such as Colchester Foodbank, Next Chapter, Essex Free School Uniform, Salvation Army, Local Schools, Social Services, The Family Child Well Being Service. We also launched our Christmas Appeal this year, asking for donations of new toys to be given to the families that we had helped over the year. Colchester Community were amazing as ever with their generous donations we were able to give every child we had helped that year a present.

2020 came with the bang of the Covid 19 Pandemic and from March we couldn't run from our hubs due to social distancing rules and the stay at home rule. We also could not take in any donations of pre-loved clothing due to the risks of covid and clothing had to be quarantined for 72 hours prior to sorting. This became a problem for us, now having to work from home, as we just did not have the capacity and storage to be able to run like this.

We then thought to contact local businesses and put pleas on our social media pages asking if anybody could donate new clothing and essential items only. We honestly did not expect the response we had: Eunice and I were totally blown away by generous individuals who would purchase items online and have them delivered to us direct. Due to the fact we couldn't operate from our hubs, we decided we would deliver items as the demand for help increased. The demand even saw us driving to Braintree and Witham to help families there.

In 2020 we helped 471 families in need with clothing and essentials working alongside agencies such as Colchester Foodbank, Next Chapter, Essex Free School Uniform, Salvation

Army, The Army, Local Schools, Social Services, Refugee Action, Modern Slavery and Victim Care, The Family Child Well Being Service, GO4 Cafe, Munch Club and Homestart.

We also launched our Christmas Appeal for Board Games where families could come together and interact and play. We were overwhelmed and thrilled with the support of the community and the amazing donation from Katie Henderson and her team that made face masks with proceeds going to local organisations and charities. They purchased us an amazing 90 board games and 5 baby monitors.

We were then contacted by Daisy from Go Bananas indoor play centre and between us we came up with the idea of a giving tree where people could purchase a child's entry ticket with or without food which the community loved to support. 144 tickets were purchased which we gave to families with age appropriate children alongside their board games. We were also contacted by Amanda from Homestart with an amazing donation of over 450 selection boxes to be able to give to each child we had helped.





On top of this we were then contacted by Tracey from Sainsburys in Priory Walk offering us to choose a family to be able to go and shop and purchase their complete Christmas dinner and treats free of charge. Tracey and her team were amazing: they then increased this to 3 families. This was so hard to choose and we had many a sleepless night choosing, as every family we helped were worthy of this amazing gesture. The families we helped were over the moon. They also donated nappies, wipes, toiletries, baby food, pyjamas to name but a few items and they continue to be an amazing support to us at Tots2Teens.

Tots2Teens were also donated 6 large food hampers full of goodies and treats for families. Brenda and Tom from Tesco Hythe donated childrens sun creams and other toiletries as well as clothing and continue to be an amazing support to us at Tots2Teens. Next also donated 4 huge boxes of clothing. Asda donated a bundle of clothing for children ages we were desperately in short supply of which without them these children would have had to go without.

At the start of 2021, Tots2Teens were still running from home and providing a delivery service but keeping up with demand was proving to be a struggle. We couldn't run from our Greenstead Hub due to social distancing rules. We were contacted by Nicola Davey who manages Greenstead Community Centre offering us a room one day a week for a few hours so that families could come and collect clothing and essentials to help ease our driving of delivering. This helped so much and took some of the pressure off. We operate from there on a Monday 10-12. Julia Young introduced us to Lee Pugh who runs Colchester Ecargo Delivery Bike Service who offered to help deliver clothing and essentials to our families. Lee continues to help us and is a massive support.

Mike Beckett offered us the chance to join them in their new Tollgate HQ Foodbank and we jumped at the chance. The space is amazing and we operate from there on a Tuesday and a Thursday between 10-12. We have had the privilege of working alongside The British Baby Box and they donated 3 of their gorgeous baby boxes to us for new expectant mums. Tots2Teens have been very lucky to receive a donation of 500 from Palmer and Partners 500 Club where they purchased us lots of fantastic equipment such as highchairs, Duvets, Baby Bouncer Chairs, Play Pens, Storage crates which have been such a blessing to help us store items of clothing in when organising and setting up at Tollgate HQ Foodbank.

Eunice and I were also contacted by Dennicci Blues Marketing Company offering to send us a huge box once a month full of children's clothing and toys. These are absolutely wonderful and we get so excited receiving these and opening them: the clothes are beautiful. To date so far this year we have helped 458 families. Families can contact us for help through Facebook Messenger, Instagram, Email or Phone or be referred to us by various agencies.

Also in 2021, we were contacted by a young lad called Alfie from Doucecroft School who wanted to create personalised age appropriate care packages for the children we support. These are so beautiful and filled with toys, DVDs, crafts, clothing etc each labelled for girl or boy and the age range. The children absolutely love receiving these and the smiles on their faces are priceless. We have also been nominated and received a few awards this year and we have been truly touched and blessed that people have taken the time to nominate us. We had a lovely phone call from the Mayoress of Colchester about receiving The Community Recognition Award thanking us for all our hard work with what we do with Tots2Teens we received a Plaque and Certificate and were nominated in The Gazette as Colchester Local Community Heroes.

Mike, Julie and Nicola from Colchester Foodbank have been such an amazing support to us at Tots2Teens from the very beginning to where we are now. They continue to go above and beyond with their help and support and Eunice and I are so very grateful for all that they and their team members do.

**IN 2019 WE HELPED 250 FAMILIES WORKING ALONGSIDE AGENCIES SUCH AS COLCHESTER FOODBANK, NEXT CHAPTER, ESSEX FREE SCHOOL UNIFORM, SALVATION ARMY, LOCAL SCHOOLS, SOCIAL SERVICES, THE FAMILY CHILD WELL BEING SERVICE**





# ANNUAL GENERAL MEETING – 22 SEPTEMBER 2021 TREASURER'S REPORT FOR 2020

**THIS YEAR I HAVE CONTINUED TO PERFORM THE ROLE OF TREASURER OF COLCHESTER FOODBANK, WORKING ON A DAILY BASIS ALONGSIDE OUR TRUSTEES, CHIEF OFFICER, WAREHOUSE STAFF AND VOLUNTEERS. I WISH TO THANK THEM ALL FOR THEIR CONTINUED SUPPORT AND CO-OPERATION.**

## GOVERNANCE

The accounts for year ended 31 December 2020 have been independently examined by Chartered Accountants, Taylor Rushby, and reviewed by our Trustees.

For the first time in the history of the Foodbank the funds received from all sources exceeded £250k in the twelve month period thereby requiring, for formal purposes, a different and fuller disclosure to be prepared.

Following presentation at this AGM the accounts will be submitted to the Charity Commission in line with our obligation to make the accounts as widely available as possible within the public domain.

During the year, I have prepared monthly financial statements for review by our Trustees. These have itemised funds received and expenses incurred against the range of operational activities undertaken, analysis of cash funds held, and projections of income and expenditure for the whole year.

## INCOMING RESOURCES

I can provide slightly more detail to the donations figure which appears on The Statement of Financial Activities – Section A of the Accounts.

**Donations which totalled £303k, comprise:**

- Regular givers, £13k. More than ninety individuals gave £1 or more each month. This represents an increase of £5k over 2019.
- Donations in cash, £26k, and by cheque or direct bank transfer, £102k – a total year-on-year increase of £92k

- Funds given through “Just Giving”, £119k, and other online sources, £43k. This equates to a quite staggering increase of £130k over the previous year, and is the result of individuals, local businesses and faith & other community groups realising the potential of the Foodbank to assist local families during the height of the COVID pandemic.

Tax relief granted through the Gift Aid scheme is shown separately in the accounts and a breakdown of the grants received is shown in Section C – Note 4

## RESOURCES EXPENDED

Costs for the year on operational activities and governance totalled £121k. A detailed analysis, as well as comparative figures for 2019, can be found in Section C – Note 6.

However, should you require any further information or clarification of any aspect of the accounts, please do not hesitate to get in touch with me:

[clivejoyce@colchester.foodbank.org.uk](mailto:clivejoyce@colchester.foodbank.org.uk)

**Clive Joyce**  
Treasurer



# INDEPENDENT EXAMINERS REPORT

## Colchester Foodbank

### *Independent examiner's report to the Trustees of Colchester Foodbank*

I report on the accounts of the organisation for the year ended 31st December 2020.

#### **Respective responsibilities of trustees and examiner**

The charity's trustees are responsible for the preparation of the accounts in accordance with the requirements of the Charities Act 2011 ("the Act"). The charity's trustees consider that an audit is not required for this year under section 144(2) of the Act and that an independent examination is needed.

It is my responsibility to:

- examine the accounts under section 145 of the Act;
- to follow the procedures laid down in the General Directions given by the Charity Commissioner under section 145(5)(b) of the Act; and
- to state whether particular matters have come to my attention.

#### **Basis of independent examiner's report**

The charity's gross income exceeded £250,000 and I am qualified to undertake the examination by being a qualified member of The Institute of Chartered Accountants in England and Wales. My examination was carried out in accordance with the General Directions given by the Charity Commissioner. An examination includes a review of the accounting records kept by the charity and a comparison of the accounts presented with those records. It also includes consideration of any unusual items or disclosures in the accounts, and the seeking of explanations from you as trustees concerning any such matters. The procedures undertaken do not provide all the evidence that would be required in an audit and, consequently no opinion is given as to whether the accounts present a 'true and fair view' and the report is limited to those matters set out in the statement below.

#### **Independent examiner's statement**

In connection with my examination, no matter has come to my attention:

which gives me reasonable cause to believe that, in any material respect, the requirements:

- (a) to keep accounting records in accordance with section 130 of the 2011 Act;
- (b) to prepare accounts which accord with the accounting records; and
- (c) to comply with the applicable requirements set out in the Charities (Accounts and Reports) Regulations 2008; or

to which, in my opinion, attention should be drawn in order to enable a proper understanding of the accounts to be reached.

Nick Taylor  
Chartered Accountant  
The Coach House  
Headgate  
Colchester  
CO3 3BT

The date upon which my opinion is expressed is:  
August 2021



# ANNUAL ACCOUNTS FOR 2020



CHARITY COMMISSION  
FOR ENGLAND AND WALES

<b>Colchester Foodbank</b>		Charity No	1152387	
Annual accounts for the period				
Period start date	01/01/2020	To	Period end date	31/12/2020

## Section A Statement of financial activities

### Incoming resources (Note 3)

#### Income and endowments from:

Donations and legacies

Gift Aid relief

Charitable activities

Other trading activities

Investments

Grants received

Other

**Total**

#### Resources expended (Note 6)

#### Expenditure on:

Raising funds

Charitable activities

Governance costs

Other

**Total**

#### Net income/(expenditure) before investment gains/(losses)

Net gains/(losses) on investments

#### Net income/(expenditure)

#### Extraordinary items

#### Transfers between funds

#### Other recognised gains/(losses):

Gains and losses on revaluation of fixed assets for the charity's own use

Other gains/(losses)

#### Net movement in funds

#### Reconciliation of funds:

Total funds brought forward

#### Total funds carried forward

Unrestricted funds £ F01	Restricted income funds £ F02	Endowment funds £ F03	Total funds £ F04	Prior year funds £ F05
303,624	-	-	303,624	76,509
3,905	-	-	3,905	2,956
-	-	-	-	-
-	-	-	-	-
162	-	-	162	273
62,986	22,500	-	85,486	17,526
471	-	-	471	-
371,148	22,500	-	393,648	97,264
-	-	-	-	-
119,268	22,500	-	141,768	68,798
1,921	-	-	1,921	2,558
-	-	-	-	-
121,189	22,500	-	143,689	71,356
249,959	-	-	249,959	25,908
-	-	-	-	-
249,959	-	-	249,959	25,908
-	-	-	-	-
-	-	-	-	-
-	-	-	-	-
-	-	-	-	-
249,959	-	-	249,959	25,908
96,491	-	-	96,491	70,583
346,450	-	-	346,450	96,491

## Section B Balance sheet

	Unrestricted funds £ F01	Restricted income funds £ F02	Endowment funds £ F03	Total this year £ F04	Total last year £ F05
<b>Fixed assets</b>					
Tangible assets (Note 10)	63,433	-	-	63,433	22,075
<b>Total fixed assets</b>	63,433	-	-	63,433	22,075
<b>Current assets</b>					
Stocks (Note 11)	-	-	-	-	-
Cash at bank and in hand (Note 12)	283,017	-	-	283,017	74,416
<b>Total current assets</b>	283,017	-	-	283,017	74,416
<b>Creditors: amounts falling due within one year</b>	-	-	-	-	-
<b>Net current assets/(liabilities)</b>	283,017	-	-	283,017	74,416
<b>Total assets less current liabilities</b>	346,450	-	-	346,450	96,491
<b>Creditors: amounts falling due after one year</b>	-	-	-	-	-
<b>Provisions for liabilities</b>	-	-	-	-	-
<b>Total net assets or liabilities</b>	346,450	-	-	346,450	96,491
<b>Funds of the Charity</b>					
Endowment funds	-	-	-	-	-
Restricted income funds	-	-	-	-	-
Unrestricted funds	346,450	-	-	346,450	96,491
Revaluation reserve	-	-	-	-	-
<b>Total funds</b>	346,450	-	-	346,450	96,491

Signed on behalf of all the trustees by:

Signature	Print Name	Date of approval dd/mm/yyyy
<i>A. Fordy &amp; J. Rusiecki</i>	Rev. A. Fordy & Julie Rusiecki	24.8.21
	JULIE RUSIECKI	25.8.21



## Section C Notes to the accounts

### Note 1 Basis of preparation

*This section should be completed by all charities.*

#### 1.1 Basis of accounting

These accounts have been prepared under the historical cost convention with items recognised at cost or transaction value unless otherwise stated in the relevant note(s) to these accounts.

The accounts have been prepared in accordance with:

- the Statement of Recommended Practice: Accounting and Reporting by Charities preparing their accounts in accordance with the Financial Reporting Standard applicable in the UK and Republic of Ireland (FRS 102) issued on 16 July 2014
- and with the Charities Act 2011.

The charity constitutes a public benefit entity as defined by FRS 102.\*

#### 1.2 Going concern

*If there are material uncertainties related to events or conditions that cast significant doubt on the charity's ability to continue as a going concern, please provide the following details or state "Not applicable", if appropriate:*

An explanation as to those factors that support the conclusion that the charity is a going concern;

**Not applicable**

Disclosure of any uncertainties that make the going concern assumption doubtful;

**Not applicable**

Where accounts are not prepared on a going concern basis, please disclose this fact together with the basis on which the trustees prepared the accounts and the reason why the charity is not regarded as a going concern.

**Not applicable**

#### 1.3 Change of accounting policy

The accounts present a true and fair view and the accounting policies adopted are those outlined in note 2.

Yes\* ☒ \* -Tick as appropriate  
No\* ☐

*Please disclose:*

<i>(i) the nature of the change in accounting policy;</i>	The charity has changed from preparing accounts on the receipts and payments basis to the accruals basis.
<i>(ii) the reasons why applying the new accounting policy provides more reliable and more relevant information; and</i>	

<i>(iii) the amount of the adjustment for each line affected in the current period, each prior period presented and the aggregate amount of the adjustment relating to periods before those presented, 3.44 FRS 102 SORP.</i>	No material adjustments were necessary to the prior period's accounts other than to add additional disclosures.
---	---

#### 1.4 Changes to accounting estimates

No changes to accounting estimates have occurred in the reporting period (3.46 FRS 102 SORP).

Yes\* ☒ \* -Tick as appropriate  
No\* ☐

*Please disclose:*

<i>(i) the nature of any changes;</i>	
<i>(ii) the effect of the change on income and expense or assets and liabilities for the current period; and</i>	
<i>(iii) where practicable, the effect of the change in one or more future periods.</i>	

#### 1.5 Material prior year errors

No material prior year error have been identified in the reporting period (3.47 FRS 102 SORP).

Yes\* ☒ \* -Tick as appropriate  
No\* ☐

*Please disclose:*

<i>(i) the nature of the prior period error;</i>	
<i>(ii) for each prior period presented in the accounts, the amount of the correction for each account line item affected; and</i>	
<i>(iii) the amount of the correction at the beginning of the earliest prior period presented in the accounts.</i>	



Note 2 Accounting policies  
2.2 INCOME

This standard list of accounting policies has been applied by the charity except for those ticked "No" or "N/a". Where a different or additional policy has been adopted then this is detailed in the box below.

Recognition of income	These are included in the Statement of Financial Activities (SoFA) when: <ul style="list-style-type: none"><li>the charity becomes entitled to the resources;</li><li>it is more likely than not that the trustees will receive the resources; and</li><li>the monetary value can be measured with sufficient reliability.</li></ul>	Yes	No	N/a
		✓		
Offsetting	There has been no offsetting of assets and liabilities, or income and expenses, unless required or permitted by the FRS 102 SORP or FRS 102.	Yes	No	N/a
		✓		
Grants and donations	Grants and donations are only included in the SoFA when the general income recognition criteria are met (5.10 to 5.12 FRS102 SORP).	Yes	No	N/a
		✓		
Legacies	In the case of performance related grants, income must only be recognised to the extent that the charity has provided the specified goods or services as entitlement to the grant only occurs when the performance related conditions are met (5.16 FRS 102 SORP). Legacies are included in the SOFA when receipt is probable, that is, when there has been grant of probate, the executors have established that there are sufficient assets in the estate and any conditions attached to the legacy are either within the control of the charity or have been met.	Yes	No	N/a
				✓
Government grants	The charity has received government grants in the reporting period	Yes	No	N/a
		✓		
Tax reclaims on donations and gifts	Gift Aid receivable is included in income when there is a valid declaration from the donor. Any Gift Aid amount recovered on a donation is considered to be part of that gift and is treated as an addition to the same fund as the initial donation unless the donor or the terms of the appeal have specified otherwise.	Yes	No	N/a
		✓		
Contractual income and performance related grants	This is only included in the SoFA once the charity has provided the related goods or services or met the performance related conditions.	Yes	No	N/a
		✓		
Donated goods	Donated goods are measured at fair value (the amount for which the asset could be exchanged) unless impractical to do so.	Yes	No	N/a
		✓		
	The cost of any stock of goods donated for distribution to beneficiaries is deemed to be the fair value of those gifts at the time of their receipt and they are recognised on receipt. In the reporting period in which the stocks are distributed, they are recognised as an expense at the carrying amount of the stocks at distribution.	Yes	No	N/a
		✓		
	Donated goods for resale are measured at fair value on initial recognition, which is the expected proceeds from sale less the expected costs of sale, and recognised in 'Income from other trading activities' with the corresponding stock recognised in the balance sheet. On its sale the value of stock is charged against 'Income from other trading activities' and the proceeds from sale are also recognised as 'Income from other trading activities'.	Yes	No	N/a
				✓
	Goods donated for on-going use by the charity are recognised as tangible fixed assets and included in the SoFA as incoming resources when receivable.	Yes	No	N/a
		✓		
	Gifts in kind for use by the charity are included in the SoFA as income from donations when receivable.	Yes	No	N/a
		✓		
Donated services and facilities	Donated services and facilities are included in the SOFA when received at the value of the gift to the charity provided the value of the gift can be measured reliably.	Yes	No	N/a
		✓		
	Donated services and facilities that are consumed immediately are recognised as income with an equivalent amount recognised as an expense under the appropriate heading in the SOFA.	Yes	No	N/a
				✓
Support costs	The charity has incurred expenditure on support costs.	Yes	No	N/a
		✓		
Volunteer help	The value of any voluntary help received is not included in the accounts but is described in the trustees' annual report.	Yes	No	N/a
		✓		
Income from interest, royalties and dividends	This is included in the accounts when receipt is probable and the amount receivable can be measured reliably.	Yes	No	N/a
		✓		
Income from membership subscriptions	Membership subscriptions received in the nature of a gift are recognised in Donations and Legacies.	Yes	No	N/a
				✓
	Membership subscriptions which gives a member the right to buy services or other benefits are recognised as income earned from the provision of goods and services as income from charitable activities.	Yes	No	N/a
				✓

Settlement of insurance claims	Insurance claims are only included in the SoFA when the general income recognition criteria are met (5.10 to 5.12 FRS102 SORP) and are included as an item of other income in the SoFA.	Yes	No	N/a
				✓
Investment gains and losses	This includes any realised or unrealised gains or losses on the sale of investments and any gain or loss resulting from revaluing investments to market value at the end of the year.	Yes	No	N/a
				✓
2.3 EXPENDITURE AND LIABILITIES				
Liability recognition	Liabilities are recognised where it is more likely than not that there is a legal or constructive obligation committing the charity to pay out resources and the amount of the obligation can be measured with reasonable certainty.	Yes	No	N/a
		✓		
Governance and support costs	Support costs have been allocated between governance costs and other support. Governance costs comprise all costs involving public accountability of the charity and its compliance with regulation and good practice.	Yes	No	N/a
		✓		
	Support costs include central functions and have been allocated to activity cost categories on a basis consistent with the use of resources, eg allocating property costs by floor areas, or per capita, staff costs by the time spent and other costs by their usage.	Yes	No	N/a
		✓		
Grants with performance conditions	Where the charity gives a grant with conditions for its payment being a specific level of service or output to be provided, such grants are only recognised in the SoFA once the recipient of the grant has provided the specified service or output.	Yes	No	N/a
				✓
Grants payable without performance conditions	Where there are no conditions attaching to the grant that enables the donor charity to realistically avoid the commitment, a liability for the full funding obligation must be recognised.	Yes	No	N/a
				✓
Redundancy cost	The charity made no redundancy payments during the reporting period.	Yes	No	N/a
		✓		
Deferred income	No material item of deferred income has been included in the accounts.	Yes	No	N/a
		✓		
Creditors	The charity has creditors which are measured at settlement amounts less any trade discounts	Yes	No	N/a
				✓
Provisions for liabilities	A liability is measured on recognition at its historical cost and then subsequently measured at the best estimate of the amount required to settle the obligation at the reporting date	Yes	No	N/a
		✓		
Basic financial instruments	The charity accounts for basic financial instruments on initial recognition as per paragraph 11.7 FRS102 SORP. Subsequent measurement is as per paragraphs 11.17 to 11.19, FRS102 SORP.	Yes	No	N/a
		✓		
2.4 ASSETS				
Tangible fixed assets for use by charity	These are capitalised if they can be used for more than one year, and cost at least £1,000	Yes	No	N/a
		✓		
	They are valued at cost.	Yes	No	N/a
		✓		
Intangible fixed assets	The depreciation rates and methods used are disclosed in note 9.2.	Yes	No	N/a
	The charity has intangible fixed assets, that is, non-monetary assets that do not have physical substance but are identifiable and are controlled by the charity through custody or legal rights. The amortisation rates and methods used are disclosed in note 9.5		✓	
		Yes	No	N/a
				✓
Heritage assets	The charity has heritage assets, that is, non-monetary assets with historic, artistic, scientific, technological, geophysical or environmental qualities that are held and maintained principally for their contribution to knowledge and culture. The depreciation rates and methods used as disclosed in note 9.6.1.4.	Yes	No	N/a
			✓	
		Yes	No	N/a
				✓
Investments	Fixed asset investments in quoted shares, traded bonds and similar investments are valued at initially at cost and subsequently at fair value (their market value) at the year end. The same treatment is applied to unlisted investments unless fair value cannot be measured reliably in which case it is measured at cost less impairment.	Yes	No	N/a
				✓
	Investments held for resale or pending their sale and cash and cash equivalents with a maturity date of less than 1 year are treated as current asset investments	Yes	No	N/a
				✓
Stocks and work in progress	Stocks held for sale as part of non-charitable trade are measured at the lower or cost or net realisable value.	Yes	No	N/a
				✓
	Goods or services provided as part of a charitable activity are measured at net realisable value based on the service potential provided by items of stock.	Yes	No	N/a
				✓
	Work in progress is valued at cost less any foreseeable loss that is likely to occur on the contract.	Yes	No	N/a
				✓
	Debtors (including trade debtors and loans receivable) are measured on initial recognition at	Yes	No	N/a



**Debtors**

settlement amount after any trade discounts or amount advanced by the charity. Subsequently, they are measured at the cash or other consideration expected to be received.

✓		
---	--	--

**Current asset investments**

The charity has investments which it holds for resale or pending their sale and cash and cash equivalents with a maturity date less than one year. These include cash on deposit and cash equivalents with a maturity date of less than one year held for investment purposes rather than to meet short term cash commitments as they fall due.

Yes	No	N/a
-----	----	-----

	✓	
--	---	--

They are valued at fair value except where they qualify as basic financial instruments.

Yes	No	N/a
-----	----	-----

		✓
--	--	---

**Section C Notes to the accounts (cont)****Note 3 Analysis of income**

		Unrestricted funds	Restricted income funds	Endowment funds	Total funds	Prior year
	Analysis				£	£
<b>Donations and legacies:</b>	Donations and gifts	303,624	-	-	303,624	76,509
	Gift Aid	3,905	-	-	3,905	2,956
	Legacies	-	-	-	-	-
	General grants provided by government/other charities	62,986	22,500	-	85,486	17,526
	Membership subscriptions and sponsorships which are in substance donations	-	-	-	-	-
	Donated goods, facilities and services	-	-	-	-	-
	Other	-	-	-	-	-
	<b>Total</b>	<b>370,515</b>	<b>22,500</b>	<b>-</b>	<b>393,015</b>	<b>96,991</b>
<b>Charitable activities:</b>		-	-	-	-	-
		-	-	-	-	-
		-	-	-	-	-
	<b>Total</b>	<b>-</b>	<b>-</b>	<b>-</b>	<b>-</b>	<b>-</b>
<b>Other trading activities:</b>		-	-	-	-	-
		-	-	-	-	-
		-	-	-	-	-
	<b>Total</b>	<b>-</b>	<b>-</b>	<b>-</b>	<b>-</b>	<b>-</b>
<b>Income from investments:</b>	Interest income	162	-	-	162	273
	Dividend income	-	-	-	-	-
	Rental and leasing income	-	-	-	-	-
	<b>Total</b>	<b>162</b>	<b>-</b>	<b>-</b>	<b>162</b>	<b>273</b>
<b>Separate material item of income:</b>	Fundraising	471	-	-	471	-
		-	-	-	-	-
		-	-	-	-	-
	<b>Total</b>	<b>471</b>	<b>-</b>	<b>-</b>	<b>471</b>	<b>-</b>
<b>Other:</b>	Conversion of endowment funds into income	-	-	-	-	-
	Gain on disposal of a tangible fixed asset held for charity's own use	-	-	-	-	-
	Gain on disposal of a programme related investment	-	-	-	-	-
	Royalties from the exploitation of intellectual property rights	-	-	-	-	-
	Other	-	-	-	-	-
	<b>Total</b>	<b>-</b>	<b>-</b>	<b>-</b>	<b>-</b>	<b>-</b>
<b>TOTAL INCOME</b>		<b>371,148</b>	<b>22,500</b>	<b>-</b>	<b>393,648</b>	<b>97,264</b>



**Section C Notes to the accounts (cont)**
**Note 4 Analysis of receipts of government grants and other grants**

	Description	This year £
Colchester Borough Council	building project	1,400
Colchester Borough Council		15,000
Anglian Community Trust	Covid-19 response	2,500
CAF Coronavirus Emergency Fund	to continue core work during health emergency	2,500
Colcheser and Tendring		1,639
Essex Community Foundation	National Emergencies Trust Coronavirus Appeal Programme	14,850
Essex County Council		600
Paypal Giving Fund		4,440
Trussell Trust	for containers	2,145
Trussell Trust	for food delivery	5,000
Trussell Trust	for salaries	9,020
HM Treasury	Coronavirus Job Retention Scheme	3,893
Other		-
	<b>Total</b>	<b>62,986</b>

	Description	Last year £
Fowler, Smith & Jones		2,500
Colchester Borough Homes		3,000
Trussell Trust	for salaries	12,026
Other		-
	<b>Total</b>	<b>17,526</b>

CC17a (Excel)

9

11/08/2021

**Section C Notes to the accounts (cont)**
**Note 5 Donated goods, facilities and services**

	This year £	Last year £
Seconded staff	-	-
Use of property	-	-
Other	-	-
	<b>-</b>	<b>-</b>

Please provide details of the accounting policy for the recognition and valuation of donated goods, facilities and services.

Items of equipment have been donated which have been included as tangible fixed assets at an estimated market value at the time of receipt.

Please give details of other forms of other donated goods and services not recognised in the accounts, eg contribution of unpaid volunteers.

Donations are received in the form of food items. There is no valuation of these goods and they are, therefore, not recognised in the income figures in the accounts.

CC17a (Excel)

10

11/08/2021



# Section C Notes to the accounts (cont)

## Note 6 Analysis of expenditure

Analysis	This year				Last year			
	Unrestricted funds	Restricted income funds	Endowment funds	Total funds	Unrestricted funds	Restricted income funds	Endowment funds	Total funds
<b>Expenditure on charitable activities:</b>				£				£
Warehouse and storage costs	24,747	-	-	24,747	21,341	-	-	21,341
Premises repairs and maintenance	4,282	-	-	4,282	1,197	-	-	1,197
Cleaning and pest control	-	-	-	-	219	-	-	219
Rates and water	78	-	-	78	156	-	-	156
Light and heat	1,813	-	-	1,813	1,770	-	-	1,770
Satellite centres	1,891	-	-	1,891	561	-	-	561
Insurance	2,307	-	-	2,307	2,416	-	-	2,416
Advertising and signage	-	-	-	-	1,325	-	-	1,325
Warehouse/distribution manager	13,387	-	-	13,387	14,675	-	-	14,675
Managerial services	21,581	-	-	21,581	18,908	-	-	18,908
Other salaries and wages	13,111	-	-	13,111	-	-	-	-
Social Security and other pension costs	8,217	-	-	8,217	554	-	-	554
Van and travel expenses	5,409	-	-	5,409	844	-	-	844
Computer and telephone costs	402	-	-	402	279	-	-	279
Stationery and postage	1,739	-	-	1,739	989	-	-	989
Training and volunteer support	3,642	-	-	3,642	408	-	-	408
Food items	4,218	-	-	4,218	3,013	-	-	3,013
Bank and other costs	250	-	-	250	143	-	-	143
Depreciation	12,194	-	-	12,194	-	-	-	-
<b>Total expenditure on charitable activities</b>	<b>119,268</b>	<b>-</b>	<b>-</b>	<b>119,268</b>	<b>68,798</b>	<b>-</b>	<b>-</b>	<b>68,798</b>
<b>Expenditure on governance:</b>								
Subscriptions	1,397	-	-	1,397	1,166	-	-	1,166
Trussell Trust charges	-	-	-	-	360	-	-	360
Payroll processing costs	324	-	-	324	298	-	-	298
Independent Examiner's fees	200	-	-	200	200	-	-	200
Other legal and professional fees	-	-	-	-	534	-	-	534
<b>Total expenditure on governance</b>	<b>1,921</b>	<b>-</b>	<b>-</b>	<b>1,921</b>	<b>2,558</b>	<b>-</b>	<b>-</b>	<b>2,558</b>
<b>Separate material item of expense</b>								
	-	-	-	-	-	-	-	-
	-	-	-	-	-	-	-	-
	-	-	-	-	-	-	-	-
<b>Total</b>	<b>-</b>	<b>-</b>	<b>-</b>	<b>-</b>	<b>-</b>	<b>-</b>	<b>-</b>	<b>-</b>
<b>Other</b>								
	-	-	-	-	-	-	-	-
	-	-	-	-	-	-	-	-
	-	-	-	-	-	-	-	-
	-	-	-	-	-	-	-	-
<b>Total other expenditure</b>	<b>-</b>	<b>-</b>	<b>-</b>	<b>-</b>	<b>-</b>	<b>-</b>	<b>-</b>	<b>-</b>
<b>TOTAL EXPENDITURE</b>	<b>121,189</b>	<b>-</b>	<b>-</b>	<b>121,189</b>	<b>71,356</b>	<b>-</b>	<b>-</b>	<b>71,356</b>

CC17a (Excel)

11

11/08/2021

# Section C Notes to the accounts

## Note 7 Details of certain items of expenditure

### Fees for examination of the accounts

Please provide details of the amount paid for any statutory external scrutiny of accounts and other services provided by your independent examiner. If nothing was paid please enter '0' in the appropriate box(es).

### Independent examiner's fees

### Assurance services other than audit or independent examination

### Tax advisory fees

### Other fees (for example: financial advice, consultancy, accountancy services) paid to the independent examiner

This year £	Last year £
200	200
-	-
-	-
-	-

CC17a (Excel)

12

11/08/2021



Section C Notes to the accounts (cont)

Note 8 Paid employees

Staff Costs

	This year £	Last year £
Salaries and wages	48,080	26,914
Social security costs	6,102	5,867
Pension costs (defined contribution scheme)	2,115	1,278
Other employee benefits	-	-
Total staff costs	56,297	34,059

No employees received employee benefits (excluding employer pension costs) for the reporting period of more than £60,000

Average head count in the year

The parts of the charity in which the employees work

	This year Number	Last year Number
Fundraising	-	-
Charitable Activities	2	1
Governance	1	1
Other	-	-
Total	3	2

Section C Notes to the accounts (cont)

Note 9 Defined contribution pension scheme or defined benefit scheme accounted for as a defined contribution scheme.

Please complete this note if a defined contribution pension scheme is operated.

	This year £	Last year £
Amount of contributions recognised in the SOFA as an expense	2,115	1,278



Section C Notes to the accounts (cont)

Note 10 Tangible fixed asset  
Please complete this note if the charity has any tangible fixed assets  
Cost or valuation

	Freehold land & buildings	Other land & buildings	Plant, machinery and motor vehicles	Fixtures, fittings and equipment	Total
	£	£	£	£	£
At the beginning of the year	-	-	1,000	21,075	22,075
Additions	-	-	16,000	37,552	53,552
Revaluations	-	-	-	-	-
Disposals	-	-	-	-	-
Transfers *	-	-	-	-	-
At end of the year	-	-	17,000	58,627	75,627

Depreciation and impairments

	Basis		Reducing balance	Reducing balance	
	Rate		20%	15%	
At beginning of the year	-	-	-	-	-
Disposals	-	-	-	-	-
Depreciation	-	-	3,400	8,794	12,194
Impairment	-	-	-	-	-
At end of the year	-	-	3,400	8,794	12,194

Net book value

Net book value at the beginning of the year	-	-	1,000	21,075	22,075
Net book value at the end of the year	-	-	13,600	49,833	63,433

Section C Notes to the accounts (cont)

Note 11 Stocks

The charity receives and collects donated goods for distribution. A relatively small amount of purchases supplement the amount of stock. The Trustees have not valued the donated goods and, therefore, do not disclose a value of stock held at the period end.



**Section C** **Notes to the accounts** **(cont)**

**Note 12** **Cash at bank and in hand**

Short term cash investments (less than 3 months maturity date)  
 Short term deposits  
 Cash at bank and on hand  
 Other  
 Total

This year £	Last year £
-	-
-	-
283,017	74,416
-	-
283,017	74,416

CC17a (Excel)

17

11/08/2021

**Section C** **Notes to the accounts** **(cont)**

**Note 13** **Charity funds**

**13.1 Details of material funds held and movements during the CURRENT reporting period**

**\* Key: PE - permanent endowment funds; EE - expendable endowment funds; R - restricted income funds, including special trusts, of the charity; and U - unrestricted funds**

Fund names	Type PE, EE R or UR *	Purpose and Restrictions	Fund balances brought forward £	Income £	Expenditure £	Transfers £	Gains and losses £	Fund balances carried forward £
General Fund	UR		39,784	360,764	119,298	114,616	-	166,634
Premises Project	UR		49,466	1,657	-	98,927	-	150,050
Brightlingsea	UR		4,804	5,360	1,611	-	-	8,553
Wivenhoe	UR		2,437	3,367	280	-	-	5,524
Designated for food	UR	for food purchases	-	-	-	15,689	-	15,689
DEFRA	R	DEFRA funds to be distributed	-	22,500	22,500	-	-	-
			-	-	-	-	-	-
			-	-	-	-	-	-
			-	-	-	-	-	-
			-	-	-	-	-	-
<b>Other funds</b>	<b>N/a</b>	<b>N/a</b>	<b>-</b>	<b>-</b>	<b>-</b>	<b>-</b>	<b>-</b>	<b>-</b>
<b>Total Funds</b>			<b>96,491</b>	<b>393,648</b>	<b>143,689</b>	<b>-</b>	<b>-</b>	<b>346,450</b>

CC17a (Excel)

18

11/08/2021

Section C Notes to the accounts (cont)									
Note 13 Charity funds (cont)									
13.2 Details of material funds held and movements during the PREVIOUS reporting period									
* Key: PE - permanent endowment funds; EE - expendable endowment funds; R - restricted income funds, including special trusts, of the charity; and U - unrestricted funds									
Fund names	Type PE, EE R or UR *	Purpose and Restrictions	Fund balances brought forward £	Income £	Expenditure £	Transfers £	Gains and losses £	Fund balances carried forward £	
General Fund	UR		32,454	-	-	-	-	32,454	
Brightlingsea	UR		1,447	3,668	-	311	-	4,804	
Wivenhoe	UR		1,478	1,209	-	250	-	2,437	
Premises Project	UR		35,204	5,673	-	9,123	-	49,466	
			-	-	-	-	-	-	
			-	-	-	-	-	-	
			-	-	-	-	-	-	
			-	-	-	-	-	-	
			-	-	-	-	-	-	
			-	-	-	-	-	-	
Other funds	N/a	N/a	-	-	-	-	-	-	
Total Funds			70,583	10,550	-	9,123	-	89,161	

11/08/2021

19

CC17a (Excel)

Section C Notes to the accounts (cont)

Note 14 Transactions with trustees and related parties

14.1 Trustee remuneration and benefits

None of the trustees have been paid any remuneration or received any other benefits from an employment with their charity or a related entity is this year or the last.

14.2 Trustees' expenses

No trustee expenses have been incurred in this year or the last.

14.3 Transactions with related parties

There have been no related party transactions in the reporting period or the last.

CC17a (Excel)

20

11/08/2021





 **13,966**

People in crisis fed last year with three-day emergency food supplies

 **2008**

We have been helping people in the Colchester area for over a decade.

 **47%**

increase in the number of people helped since the previous year

**COLCHESTER FOODBANK  
DEMAND ROSE SO MUCH IN 2020  
THAT THIS WOULD DOUBLE THE  
SIZE OF OUR ORGANISATION  
EVERY TWO YEARS.**











## Contact Us

**Colchester Foodbank**  
3 Tollgate Retail Park, Tollgate West,  
Stanway, Colchester CO3 8RG.

T: 01206 621 998



@FoodBankColchester



@Colchfbank



@FoodBankColchester



LinkedIn.com/company/Colchester-Foodbank

**[www.colchester.foodbank.org.uk](http://www.colchester.foodbank.org.uk)**

Colchester Foodbank is a registered charity in England number 1152387



**FUNDRAISING  
REGULATOR**