

HOME-START TEIGNBRIDGE



ANNUAL REPORT

APRIL 2023 - MARCH 2024



TRUSTEES' REPORT

Welcome to Home-Start Teignbridge's News Round-Up for the year April 2023- March 2024.

We have had another busy year not only supporting local families and training new volunteers but also running several successful fund raising events.

We remain indebted to our volunteers, both long standing and newly trained. Without their enthusiasm and commitment we could not make the difference we do among the families who are referred to us. They arrive early to set up our Stay and Play Group which meets here in this hall at Abbotsbury Church every Monday morning, bring refreshments and befriend the families who attend. They also visit these families in their homes and accompany them as they travel around the local area to the shops, for GP appointments or to go swimming or to the park.

We are continuing our successful partnership with Stover Country Park where we hold weekly sessions enabling our families to safely enjoy this facility and to benefit from everything that being out of doors brings them.

We have also continued to sign post our families to other local services who contribute to their wellbeing, notably Citizens Advice who have been long term, loyal supporters of our work. We are very grateful to them for their offer to our coordinator to make occasional use of their office space.

We continue to receive high numbers of referrals from Healthcare professionals and were very pleased to be described by one Health Visitor as the most important colleagues she has because of our quick response to her requests for help.

We continue to fund raise because we have no statutory funding and among funders who donate to us are Awards 4 All, The Yapp Charitable Trust, Devon County Council, The Woodward Trust, Charities Aid Foundation, Northbrook Charitable Trust, The Norman Family Trust, and Garfield Weston. We are also supported by local groups such as the ukelele band, the Lions Club and Newton Abbot Rotary.

We raised funds ourselves by holding a quiz which was well attended and providing wine and mince pies at two Christmas concerts held by The Big Noise Chorus. Watch this space for future events which we would love you to attend.

I want to extend my thanks to my fellow trustees who work so hard behind the scenes. Also to Chris Jones from Best Accounting who has again carried out an Independent Examiners Report on our current accounts.

Here's to another successful year, and thank you for coming today.

LINDSAY DOIDGE
Chair of Trustees



TREASURER'S REPORT

Financial Review

Overall income and expenditure showed a surplus of £17,062 with income of £55,678 against expenditure of £38,617. Expenditure was in line with the budget.

The principle Income for 2023-2024 came in the form of funding grants from a variety of sources including, Incredible Grant Awards 4 All, YAPP Charitable Trust, Teignbridge District Councillors, Devon CC, Woodward Charitable Trust, Norman Family Trust, Garfield Weston and Northbrook Foundation. Other income came from miscellaneous donations including The Lions Club, Newton Abbot Rotary Club and The Newton Abbot Ukulele Band.

Substantial funds are needed, every year, to run the scheme effectively and the trustees are, proactively, looking at the best way to obtain sustainable funds for the future.

RESERVES POLICY AND RISK MANAGEMENT

The Trustees maintain reserves in the form of Designated Funds, for closure costs, equating to £11,667

This position is expected to be held in the following year.

The Trustees have a risk management strategy which includes an ongoing review of the risks the charity may face and the establishment of systems and procedures to mitigate those risks. In particular, the Funding committee keeps a close eye on the funding situation and on the charity's contractual commitments, entering into none of the latter for which the funds are not available.

INCOME

	£
Funding Grants	49,028
Donations	2,910
Other Income	3,740
Total	55,678

EXPENDITURE

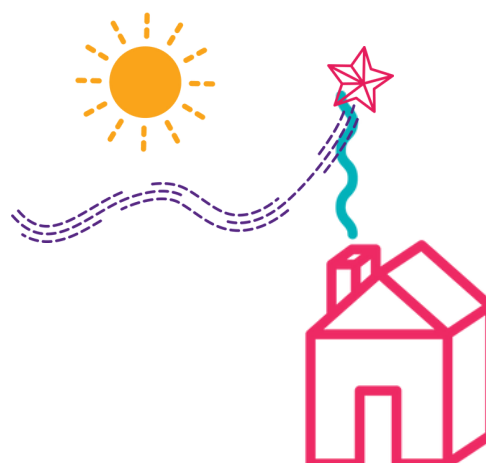
Staff Salaries, Training & Pension	29,563
Staff Travel	2,293
Volunteers & Families	2,041
Premises Hall Rental	400
Administration	1,028
Governance	2,416
Fundraising	876

Total	38,617
--------------	---------------

Surplus/(Deficit) for Year	17,062
-----------------------------------	---------------

Unrestricted Reserves	14,302
------------------------------	---------------

Restricted Reserves	26,416
----------------------------	---------------





STATISTICS

2023-2024



Families Visited at home	14
Families Who Attended the Group	25
Families with Complex Need	12
Families Signposted	9
Total Number of Volunteers	20
New Volunteers Trained	5



HOME-START TEIGNBRIDGE

Charity Number 1152371

Company Number 8232066

Annual Accounts

April 1 2023 – 31 March 2024

Home-Start Teignbridge		Charity No	1152371	
		Company No	8232066	
Annual accounts for the period				
Period start date	1/4/2023	To	Period end date	31/3/2024

Section A Statement of financial activities (including summary income and expenditure account)

Recommended categories by activity		Guidance Note	Unrestricted funds	Restricted income funds	Endowment funds	Total funds	Prior year funds
			£	£	£	£	£
			F01	F02	F03	F04	F05
Income							
Income and endowments from:							
Donations and legacies		2	7,600	-	-	7,600	7,458
Charitable activities							
	Group Activities	3	-	26,784	-	26,784	13,393
	Home Visiting	3	-	17,555	-	17,555	22,133
Local Fundraising Activities							
		4	3,330	-	-	3,330	-
Investments							
		5	410	-	-	410	165
Total			11,340	44,339	-	55,679	43,149
Expenditure (Notes 6)							
Expenditure on:							
Raising funds		6	876	-	-	876	-
Charitable activities							
						-	
	Group Activities	6	451	12,594	-	13,045	9,805
	Home Visiting		4,176	18,104	-	22,280	27,561
Other		6	2,416	-	-	2,416	2,640
Total			7,919	30,698	-	38,617	40,006
Other recognised gains/(losses)							
Gains and losses on revaluation of fixed assets for the charity's own use			-	-	-	-	-
Gains and losses on investment assets			-	-	-	-	-
Net movement in funds			3,421	13,641	-	17,062	3,143
Total funds brought forward			10,881	12,775	-	23,656	20,513
Total funds carried forward			14,302	26,416	-	40,718	23,656

Section B Balance sheet

		Total this year £	Total last year £
Fixed assets			
Tangible assets			
Investments			
<i>Total fixed assets</i>		-	-
Current assets			
Debtors	11	-	-
Deposit Accounts	23	22,368	11,957
Cash at bank and in hand	13	18,963	12,530
<i>Total current assets</i>		41,331	24,487
Creditors: amounts falling due within one year	12	603	822
<i>Net current assets/(liabilities)</i>		40,728	23,665
<i>Total assets less current liabilities</i>		40,728	23,665
Creditors: amounts falling due after one year	12	-	-
Trustees Guarantee Account		10	10
<i>Net assets</i>		40,718	23,655
Funds of the Charity			
Unrestricted funds		2,635	1,214
Designated funds (Note 14.1)		11,667	9,667
Total unrestricted funds		14,302	10,881
Restricted income funds (Note 14.1)		26,416	12,775
<i>Total funds</i>		40,718	23,656

Signed on behalf of all the trustees

Signature

Date of approval

Lindsay Dudge

24-Jun-24

Chairman

Section C **Notes to the accounts**

Note 1 Basis of preparation

This section should be completed by all charities.

1.1 Basis of accounting

These accounts have been prepared under the historical cost convention with items recognised at cost or transaction value unless otherwise stated in the relevant note(s) to these accounts.

The accounts have been prepared in accordance with:

- and with*

ü

 the Statement of Recommended Practice: Accounting and Reporting by Charities preparing their accounts in accordance with the Financial Reporting Standard applicable in the UK and Republic of Ireland (FRS 102) issued on 16 July 2014
- and with*

ü

 the Financial Reporting Standard applicable in the United Kingdom and Republic of Ireland (FRS 102)
- and with the Charities Act 2011.

The charity constitutes a public benefit entity as defined by FRS 102.*

The charitable company meets the definition of a public benefit entity under FRS 102
--

* -Tick as appropriate

1.2 Going concern

If there are material uncertainties related to events or conditions that cast significant doubt on the charity's ability to continue as a going concern, please provide the following details or state "Not applicable", if appropriate:

An explanation as to those factors that support the conclusion that the charity is a going concern;

The trustees consider there are no material uncertainties about the charitable company's ability to continue as a going concern

1.3 Change of accounting policy

The accounts present a true and fair view and no changes have been made to the accounting policies adopted in note { }.

Yes*

ü

 No*

--

 * -Tick as appropriate

Please disclose:

<i>(i) the nature of the change in accounting policy;</i>	
<i>(ii) the reasons why applying the new accounting policy provides more reliable and more relevant information; and</i>	
<i>(iii) the amount of the adjustment for each line affected in the current period, each prior period presented and the aggregate amount of the adjustment relating to periods before those presented, 3.44 FRS102 SORP.</i>	

1.4 Changes to accounting estimates

No changes to accounting estimates have occurred in the reporting period (3.46 FRS102 SORP).

Yes*

ü

 No*

--

 * -Tick as appropriate

Please disclose:

<i>(i) the nature of any changes;</i>	
<i>(ii) the effect of the change on income and expense or assets and liabilities for the current period; and</i>	
<i>(iii) where practicable, the effect of the change in one or more future periods.</i>	

1.5 Material prior year errors

No material prior year error have been identified in the reporting period (3.47 FRS102 SORP).

Yes*

ü

 No*

--

 * -Tick as appropriate

Please disclose:

<i>(i) the nature of the prior period error;</i>	
<i>(ii) for each prior period presented in the accounts, the amount of the correction for each account line item affected; and</i>	
<i>(iii) the amount of the correction at the beginning of the earliest prior period presented in the accounts.</i>	

Section C		Notes to the accounts	(cont)		
Note 2		Accounting policies			
2.2 INCOME					
Recognition of income	These are included in the Statement of Financial Activities (SoFA) when: <ul style="list-style-type: none">the charity becomes entitled to the resources;it is more likely than not that the trustees will receive the resources;the monetary value can be measured with sufficient reliability.		Yes*	No*	N/a*
			ü	ü	ü
Offsetting	There has been no offsetting of assets and liabilities, or income and expenses, unless required or permitted by the FRS 102 SORP or FRS 102.		Yes*	No*	N/a*
			ü	ü	ü
Grants and donations	Grants and donations are only included in the SoFA when the general income recognition criteria are met (5.10 to 5.12 FRS102 SORP).		Yes*	No*	N/a*
			ü	ü	ü
	In the case of performance related grants, income must only be recognised to the extent that the charity has provided the specified goods or services as entitlement to the grant only occurs when the performance related conditions are met (5.16 FRS 102 SORP).		Yes*	No*	N/a*
			ü	ü	ü
Support costs	The charity has incurred expenditure on support costs.		Yes*	No*	N/a*
			ü	ü	ü
Volunteer help	The value of any voluntary help received is not included in the accounts but is described in the trustees' annual report.		Yes*	No*	N/a*
			ü	ü	ü
Income from interest, royalties and dividends	This is included in the accounts when receipt is probable and the amount receivable can be measured reliably.		Yes*	No*	N/a*
			ü	ü	ü
2.3 EXPENDITURE AND LIABILITIES					
Liability recognition	Liabilities are recognised where it is more likely than not that there is a legal or constructive obligation committing the charity to pay out resources and the amount of the obligation can be measured with reasonable certainty.		Yes*	No*	N/a*
			ü	ü	ü
Governance and support costs	Support costs have been allocated between governance costs and other support. Governance costs comprise all costs involving public accountability of the charity and its compliance with regulation and good practice. Support costs include central functions and have been allocated to activity cost categories on a basis consistent with the use of resources, eg allocating property costs by floor areas, or per capita, staff costs by the time spent and other costs by their usage.		Yes*	No*	N/a*
			ü	ü	ü
Grants with performance conditions	Where the charity gives a grant with conditions for its payment being a specific level of service or output to be provided, such grants are only recognised in the SoFA once the recipient of the grant has provided the specified service or output.		Yes*	No*	N/a*
			ü	ü	ü
Redundancy cost	The charity made no redundancy payments during the reporting period.		Yes*	No*	N/a*
			ü	ü	ü
Deferred income	No material item of deferred income has been included in the accounts.		Yes*	No*	N/a*
			ü	ü	ü
Creditors	The charity has creditors which are measured at settlement amounts less any trade discounts		Yes*	No*	N/a*
			ü	ü	ü
Provisions for liabilities	A liability is measured on recognition at its historical cost and then subsequently measured at the best estimate of the amount required to settle the obligation at the reporting date		Yes*	No*	N/a*
			ü	ü	ü
Basic financial instruments	The charity accounts for basic financial instruments on initial recognition as per paragraph 10.7 FRS102 SORP. Subsequent measurement is as per paragraphs 11.17 to 11.19, FRS102 SORP.		Yes*	No*	N/a*
			ü	ü	ü
2.4 ASSETS					
Debtors	Debtors (including trade debtors and loans receivable) are measured on initial recognition at settlement amount after any trade discounts or amount advanced by the charity. Subsequently, they are measured at the cash or other consideration expected to be received.		Yes*	No*	N/a*
			ü	ü	ü
POLICIES ADOPTED ADDITIONAL TO OR DIFFERENT FROM THOSE ABOVE					

Section C **Notes to the accounts** **(cont)**

Note 3 **Income**

	Analysis of income	Unrestricted funds	Restricted income funds	Endowment funds	Total funds £	Prior year £
Donations and legacies:	Donations and gifts	2,910		-	2,910	967
	Gift Aid			-	-	-
	Legacies			-	-	-
	General grants provided by other charities	4,690		-	4,690	6,491
				-	-	-
	Total	7,600	-	-	7,600	7,458
Charitable activities:						
Family Groups	Family Group		283		283	534
	Children in Need				-	5,891
	Awards4All		19,986		19,986	
	Teignbridge District Council				-	6,968
	Devon County Council (Stover)	-	6,515	-	6,515	-
	Sub total	-	26,784	-	26,784	13,393
Home Support						
	Children in Need				-	4,529
	Claire Milne Trust				-	8,986
	Woodward Trust		2,250		2,250	750
	Norman Family Trust		2,000		2,000	
	Garfield Weston				-	5,000
	Northbrook Trust		5,000		5,000	
	David Gibbons Trust				-	2,868
	Devon County Council (Home Visiting)		3,800		3,800	
	Teignbridge District Councillors		4,505		4,505	
	Sub total	-	17,555	-	17,555	22,133
	Other	-	-	-	-	-
	Total	-	44,339	-	44,339	35,526
Fundraising activities:						
		3,330	-	-	3,330	-
		-	-	-	-	-
	Other	-	-	-	-	-
	Total	3,330	-	-	3,330	-
Income from investments:	Interest income	410	-	-	410	165
	Dividend income	-	-	-	-	-
	Rental and leasing income	-	-	-	-	-
	Other	-	-	-	-	-
	Total	410	-	-	410	165
TOTAL INCOME		11,340	44,339	-	55,679	43,149

Check with SOFA
55,679 | 43,149

Other recognised gains/(losses)

Gains and losses on revaluation of fixed assets for the charity's own use	-	-	-	-	-
Gains and losses on investment assets	-	-	-	-	-
Net movement in funds	3,421	13,641	-	17,062	1,709
Total funds brought forward	10,881	12,775	-	23,656	20,513
Total funds carried forward	14,302	26,416	-	40,718	22,222

Other information:

All income in the prior year was restricted except for:

Misc Donations (£967) Other Grants (£6491)

Section C	Notes to the accounts	(cont)
-----------	-----------------------	--------

Note 6 **Expenditure**

Analysis of expenditure		Unrestricted funds	Restricted income funds	Endowment funds	Total funds £	Prior year £
Expenditure on raising funds:		-	-	-	-	-
	Staging fundraising events	857		-	857	
	Advertising, marketing, direct mail and publicity	19		-	19	-
	Other trading activities			-	-	-
	Total expenditure on raising funds	876	-	-	876	-
Expenditure on Charitable Activities	Family Groups					
	Staffing		10,909	-	10,909	8,960
	Staff Travel		501		501	416
	Volunteers & Families		984	-	984	109
	Training	228		-	228	-
	Hall Rental	200	200		400	320
	Uniforms/PPE	23		-	23	-
	Sub total	451	12,594	-	13,045	9,805
	Home/Telephone Support					
	Staffing	2,063	16,363	-	18,426	23,116
	Staff Travel	686	1,106	-	1,792	2,394
	Volunteers & Families		635	-	635	948
	Staff & Volunteer Training	399		-	399	95
	Office Admin	1,028		-	1,028	1,008
	Sub total	4,176	18,104	-	22,280	27,561
	Total expenditure on charitable activities	4,627	30,698	-	35,325	37,366
Other	Office Premises			-	-	-
	Governance	2,416		-	2,416	2,640
	Depreciation			-	-	-
	Total other expenditure	2,416	-	-	2,416	2,640
TOTAL EXPENDITURE		7,919	30,698	-	38,617	40,006

Check with SOFA

38,617	40,006
--------	--------

Note 7 Details of certain types of expenditure**Note 7.1 Fees for examination of the accounts**

Please provide details of the amount paid for any statutory external scrutiny of accounts and other services provided by your independent examiner. If nothing was paid please enter '0' in the appropriate box(es).

Independent examiner's fees

Assurance services other than independent examination

Tax advisory fees

Other fees (for example: financial advice, consultancy, accountancy services) paid to the independent examiner

This year £	Last year £
0	0
0	0
0	0
0	0

Note 8 **Paid employees**

Please complete this note if the charity has any employees (transactions with Trustees dealt with in Note 28)

8.1 Staff Costs

	This year £	Last year £
Salaries and wages	27,272	29,868
Social security costs		
Pension costs (defined contribution pension plan)	2,063	2,208
Staff Training		
Redundancy cost		
Total staff costs	29,335	33,167

0

Please provide details of expenditure on staff working for the charity whose contracts are with and are paid by a related party

--

Please give details of the number of employees whose total employee benefits (excluding employer pension costs) fell within each band of £10,000 from £60,000 upwards. If there are no such transactions, please enter 'true' in the box provided.

No employees received employee benefits (excluding employer pension costs) for the reporting period of more than £60,000

--

Band	Number of employees
£60,000 to £69,999	0
£70,000 to £79,999	0
£80,000 to £89,999	0
£90,000 to £99,999	0
£100,000 to £109,999	0

Please provide the total amount paid to key management personnel (includes trustees and senior management) for their services to the charity. For specific amounts paid to trustees, see Note 28.

--

8.2 Average head count in the year

The parts of the charity in which the employees work

	This year Number	Last year Number
Fundraising	-	-
Charitable Activities	1	1
Governance	-	-
Other	-	-
Total	1	1

8.3 Ex-gratia payments to employees and others (excluding trustees)

Please complete if an ex-gratia payment is made.

Please explain the nature of the payment

--

Please state the legal authority or reason for making the payment

--

Please state the amount of the payment (or value of any waiver of a right to an asset)

--

8.4 Redundancy payments

Please complete if any redundancy or termination payment is made in the period.

Total amount of payment

--

The nature of the payment (cash, asset etc.)

--

The extent of redundancy funding at the balance sheet date

--

Please state the accounting policy for any redundancy or termination payments

--

Note 9 Defined contribution pension scheme or defined benefit scheme accounted for as a defined contribution scheme.

9.1 Please complete this note if a defined contribution pension scheme is operated.

Amount of contributions recognised in the SOFA as an expense	£2,063.00
Please explain the basis for allocating the liability and expense of defined contribution pension scheme between activities and between restricted and unrestricted funds.	<p>Employer pension contribution £ 1,363.60</p> <p>Pension - Past Service Deficit £699.40</p> <p>This is paid from unrestricted funds</p>

9.2 Please complete this section where the charity participates in a defined benefit pension plan but is unable to ascertain its share of the underlying assets and liabilities.

Please confirm that although the scheme is accounted for as a defined contribution plan, it is a defined benefit plan.

Please provide such information as is available about the plan's surplus or deficit and the implications, if any, for the reporting charity

9.3 Please complete this section where the charity participates in a multi-employer defined benefit pension plan that is accounted for as a defined contribution plan.

Describe the extent to which the charity can be liable to the plan for other entities' obligations under the terms and conditions of the multi-employer plan

Explain how any liability arising from an agreement with a multi-employer plan to fund a deficit has been determined.

Note 11 Debtors and prepayments

Please complete this note if the charity has any debtors or prepayments.

11.1 Analysis of debtors

Trade debtors

Prepayments and accrued income

Other debtors

This year £	Last year £
	-
-	-
-	-
Total -	-

Complete 11.2 where a material debtor is recoverable more than a year after the reporting date.

11.2 Disclosure of debtors recoverable in more than 1 year (included in debtors above)

Trade debtors

Prepayments and accrued income

Other debtors

This year £	Last year £
-	-
-	-
-	-
Total -	-

Note 12 Creditors and accruals

Please complete this note if the charity has any creditors or accruals.

12.1 Analysis of creditors

	Amounts falling due within one year		Amounts falling due after more than one year	
	This year £	Last year £	This year £	Last year £
Loan from the Monument Trust	-	-		
Bank loans and overdrafts	-	-	-	-
Trade creditors	-		-	-
Payments received on account for contracts or performance-related grants	-	-	-	-
Accruals and deferred income			-	-
Taxation and social security	344	520	-	-
Other creditors	259	302	-	-
Total	603	822	-	-

12.2 Deferred income

Please complete this note if the charity has deferred income.

Please explain the reasons why income is deferred.

--

Movement in deferred income account

Balance at the start of the reporting period
Amounts added in current period
Amounts released to income from previous periods
Balance at the end of the reporting period

This year £	Last year £
-	-
-	-
-	-
-	-

Note 13 Cash at bank and in hand**Short term cash investments (less than 3 months maturity date)****Short term deposits****Cash at bank****Cash on hand****Other****Total**

This year £	Last year £
-	-
22,368	11,957
18,956	12,486
7	44
-	-
41,331	24,487

Section C	Notes to the accounts	(cont)
-----------	-----------------------	--------

Note 14 **Charity funds**

14.1 Details of material funds held and movements during the CURRENT reporting period

Please give details of the movements of material individual funds in the reporting period together with a balancing figure for 'Other funds' (which should include revaluation reserve and fair value reserve, if applicable). The 'Total funds' figure below should reconcile to 'Total funds' in the balance sheet.

** Key: PE - permanent endowment funds; EE - expendable endowment funds; R - restricted income funds, including special trusts, of the charity; and U - unrestricted funds*

Fund names	Type PE, EE R or UR *	Purpose and Restrictions	Fund balances brought forward £	Income £	Expenditure £	Transfers £	Gains and losses £	Fund balances carried forward £
Core Funding			1,214	11,340	- 7,919	- 2,000	-	2,635
Designated Funding			9,667	-	-	2,000	-	11,667
Family Group			192	283	- 475	-	-	-
Children in Need			4,833	-	- 4,833	-	-	-
Awards4All			-	19,986	- 520	-	-	19,466
Teignbridge District Council			-	-	-			
Devon County Council (Stover)			-	6,515	- 9,515			- 3,000
Claire Milne Trust			2,236	-	- 2,236	-	-	-
Woodward Trust			330	2,250	- 330	-	-	2,250
Norman Family Trust			-	2,000	- 1,000	-	-	1,000
Garfield Weston			3,750	-	- 3,750	-	-	-
Northbrook Trust			-	5,000	- 1,300	-	-	3,700
David Gibbons Trust			1,434	-	- 1,434	-	-	-
Devon County Council (Home Visiting)			-	3,800	- 800	-	-	3,000
Teignbridge District Councillors				4,505	- 4,505			-
Other funds (balancing figure)	N/a	N/a	-	-	-	-	-	-
Total Funds as per balance sheet			23,656	55,679	- 38,617	-	-	40,718

Check 38,617
 - 38,617
 -

Fund balances carried forward include assets and liabilities denominated in a foreign currency Yes* No*

If yes, please state the basis on which the assets and/or liabilities have been translated into sterling (or the currency in which the accounts are drawn up).	
--	--

Section C

Notes to the accounts

(cont)

Note 14 Charity funds

14.2 Details of material funds held and movements during the PREVIOUS reporting period

Please give details of the movements of material individual funds in the reporting period together with a balancing figure for 'Other funds' (which should include revaluation reserve and fair value reserve, if applicable). The 'Total funds' figure below should reconcile to 'Total funds' in the balance sheet.

* Key: PE - permanent endowment funds; EE - expendable endowment funds; R - restricted income funds, including special trusts, of the charity; and U - unrestricted funds

Fund names	Type PE, EE R or UR *	Purpose and Restrictions	Fund balances brought forward £	Income £	Expenditure £	Transfers £	Gains and losses £	Fund balances carried forward £
Core Funding			407	7,623	- 5,816	- 1,000	-	1,214
Designated Funding			8,667	-	-	1,000	-	9,667
Family Group			287	534	- 629	-	-	192
Children in Need			3,163	10,420	- 8,750	-	-	4,833
Awards For All			2,951	-	- 2,951	-	-	-
Teigbridge District Council				6,968	- 6,968			
Claire Milne Trust			-	8,986	- 6,750	-	-	2,236
Woodward Trust			-	750	- 420	-	-	330
Norman Family Trust			1,100	-	- 1,100	-	-	-
Garfield Weston			-	5,000	- 1,250	-	-	3,750
Pears Foundation			3,938	-	- 3,938	-	-	-
Pilgrim Trust			-	-		-	-	-
David Gibbons Trust			-	2,868	- 1,434	-	-	1,434
Other funds (balancing figure)	N/a	N/a	-	-	-	-	-	-
Total Funds as per balance sheet			20,513	43,149	- 40,006	-	-	23,656

Fund balances carried forward include assets and liabilities denominated in a foreign currency

Yes*	No*
<input type="checkbox"/>	<input checked="" type="checkbox"/>

Note 14 **Charity funds (cont)**

14.3 Transfers between funds

	Reason for transfer and where endowment is converted to income, legal power for its conversion	Amount
Between unrestricted and restricted funds		
Between endowment and restricted funds		
Between endowment and unrestricted funds		

14.4 Designated funds

Planned use	Purpose of the designation	Amount
Staff Redunancy	Redundancy payments in the event of the charity not having enough funds to continue operating	11,667

Note 15

Transactions with trustees and related parties

If the charity has any transactions with related parties (other than the trustee expenses explained in guidance notes) details of such transactions should be provided in this note. If there are no transactions to report, please enter "True" in the box or "False" if there are transactions to report.

15.1 Trustee remuneration and benefits

None of the trustees have been paid any remuneration or received any other benefits from an employment with their charity or a related entity (True or False)

TRUE

In the period the charity has paid trustees remuneration and benefits. Please give the amount of, and legal authority for, any remuneration or other benefits paid to a trustee by the charity or any institution or company connected with it.

Name of trustee	Legal authority (eg order, governing document)	Amounts paid or benefit value					Last year
		This year					
		Remuneration	Pension contribution	Redundancy (including loss of office)/ex gratia	Other	TOTAL	
		£	£	£	£	£	

Please give details of why remuneration or other employment benefits were paid.

Where an ex gratia payment has been made to a trustee, provide an explanation of the nature of the payment.

If a third party has been reimbursed for providing one or more trustees, state the nature of the payment and amount of the reimbursement.

State the number of trustees to whom retirement benefits are accruing under a defined contribution pension scheme.

0

15.2 Trustees' expenses

If the charity has paid trustees expenses for fulfilling their duties, details of such transactions should be provided in this note. If there are no transactions to report, please enter "True" in the box below. If there are transactions to report, please enter "False".

No trustee expenses have been incurred (True or False)

TRUE

Type of expenses reimbursed	This year	Last year
	£	£
Travel		
Subsistence		
Accommodation		
Other (please specify):		
TOTAL		

Please provide the number of trustees reimbursed for expenses or who had expenses paid by the charity

15.3 Transaction(s) with related parties

Please give details of any transaction undertaken by (or on behalf of) the charity in which a related party has a material interest, including where funds have been held as agent for related parties. If there are no such transactions, please enter 'true' in the box provided.

There have been no related party transactions in the reporting period (True or False)

TRUE

Name of the trustee or related party	Relationship to charity	Description of the transaction(s)	Amount		Balance at period end	Provision for bad debts at period end	Amounts written off during reporting period
			£		£	£	£

In relation to the transactions above, please provide the terms and conditions, including any security and the nature of any payment (consideration) to be provided in settlement.

For any related party, please provide details of any guarantees given or received.



CHARITY COMMISSION
FOR ENGLAND AND WALES

Independent examiner's report on the accounts

Section A

Independent Examiner's Report

Report to the trustees/
members of

Charity Name
Home-Start Teignbridge

On accounts for the year
ended

March 31 2024

Charity no
(if any)

1152371

Set out on pages

2-20

I report to the trustees on my examination of the accounts of the above charity ("the Trust") for the year ended **31/ 03 / 2024**.

Responsibilities and basis
of report

As the charity's trustees, you are responsible for the preparation of the accounts in accordance with the requirements of the Charities Act 2011 ("the Act").

I report in respect of my examination of the Trust's accounts carried out under section 145 of the 2011 Act and in carrying out my examination, I have followed all the applicable Directions given by the Charity Commission under section 145(5)(b) of the Act.

Independent examiner's
statement

~~[The charity's gross income exceeded £250,000 and I am qualified to undertake the examination by being a qualified member of [insert name of applicable listed body]]. Delete [] if not applicable.~~

I have completed my examination. I confirm that no material matters have come to my attention in connection with the examination (~~other than that disclosed below~~*) which gives me cause to believe that in, any material respect:

- the accounting records were not kept in accordance with section 130 of the Charities Act; or
- the accounts did not accord with the accounting records; or
- the accounts did not comply with the applicable requirements concerning the form and content of accounts set out in the Charities (Accounts and Reports) Regulations 2008 other than any requirement that the accounts give a 'true and fair' view which is not a matter considered as part of an independent examination.

I have no concerns and have come across no other matters in connection with the examination to which attention should be drawn in this report in order to enable a proper understanding of the accounts to be reached.

** Please delete the words in the brackets if they do not apply.*

Signed:

C Jones

Date:

12/06/2024

Name: CHRISTOPHER JONES

Relevant professional
qualification(s) or body (if
any):

FMAAT

Address:

BEST ACCOUNTANCY SERVICES (NEWTON ABBOT) LTD
9 MARKET STREET
NEWTON ABBOT, TQ12 2RJ

Section B

Disclosure

Only complete if the examiner needs to highlight material matters of concern (see CC32, Independent examination of charity accounts: directions and guidance for examiners).