

# HOME-START TEIGNBRIDGE



ANNUAL REPORT  
APRIL 2022 - MARCH 2023



# TRUSTEES' REPORT

Welcome to Home-Start Teignbridge's News Round-Up for the year April 2022- March 2023.

Where did that year go? I have just reminded myself of what I wrote in June 2022 and it is hard to believe that 12 months have passed since then.

I think that this is probably because we have been so busy supporting our local community since the Pandemic. We had a period soon after we could operate again normally when it proved difficult to recruit volunteers for our training programme but this year we have delivered two preparation courses and already have interest from a number of potential new volunteers.

Our volunteers are at the heart of our charity and meeting new, enthusiastic volunteers is always cheering. I want to extend my grateful thanks to all our volunteers, established and new, for everything they do for Home-Start Teignbridge.

Home-Start Teignbridge has continued to work in close collaboration with The University Center South Devon. Our Co-ordinator has acted as supervisor to two students on their foundation degree course. They have also completed their Home-Start Training and become volunteers.

Our core service of support for families in their own homes remains integral to our work. In addition our Monday morning family group is thriving. Specifically, as we have been fostering partnerships with community groups that specialise in preventative work. This has included: Citizens Advice, Homes for Ukraine, CAP, Speech and Language Development specialists, Read Easy, Healthwatch, Devon & Somerset Fire and Rescue Service, Newton Abbot Museum and stores such as Tesco. Over the last year, we formed a collaborative partnership with Stover Country Park, with the aim being to introduce families and volunteers to this beautiful green space.

Our referrals from all agencies have increased, including families with young children who are fleeing conflict in their own countries.

Among funders who have generously supported us are: Children in Need, The Yapp Charitable Trust, The Clare Milne Trust, The Coop, Devon County Council, Teignbridge District Council, The Woodward Charitable Trust, The Garfield Weston Foundation, The Gibbons Trust, Magic Little Grants, Charities Aid Foundation, Newton Abbot Masons and Newton Abbot Ukulele Band. Our long-term supporters Newton Abbot Rotary also gave a generous sum to provide uniforms for staff and volunteers.

This has only all been possible with the invaluable support of my fellow Trustees and the volunteers who are the backbone of this organisation.

I cannot close without extending my sincere thanks once again to Chris Jones of Best Accountancy who has once more scrutinised our annual accounts.

**LINDSAY DOIDGE**  
Chair of Trustees





# TREASURER'S REPORT

## Financial Review

Overall income and expenditure showed a surplus of £3,143 with income of £43,149 against expenditure of £40,006. Expenditure was in line with the budget.

The principle Income for 2022-2023 came in the form of funding grants from a variety of sources including Children in Need, YAPP Charitable Trust, Teignbridge DC, Clare Milne Trust, Woodward Charitable Trust Garfield Weston and David Gibbons Trust. Other income came from miscellaneous donations including Newton Abbot Rotary, Newton Abbot Masons and The Newton Abbot Ukele Band.

Substantial funds are needed, every year, to run the scheme effectively and the trustees are, proactively, looking at the best way to obtain sustainable funds for the future.

## RESERVES POLICY AND RISK MANAGEMENT

The Trustees maintain reserves in the form of Designated Funds, for closure costs, equating to £9,667

This position is expected to be held in the following year.

The Trustees have a risk management strategy which includes an ongoing review of the risks the charity may face and the establishment of systems and procedures to mitigate those risks. In particular, the Funding committee keeps a close eye on the funding situation and on the charity's contractual commitments, entering into none of the latter for which the funds are not available.

## INCOME

	£
Funding Grants	42,017
Donations	967
Other Income	1655
<b>Total</b>	<b>43,149</b>

## EXPENDITURE

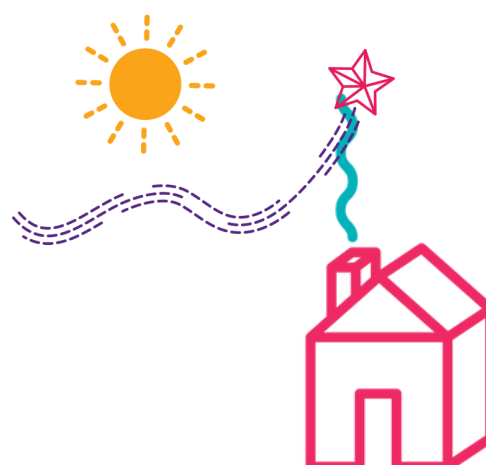
Staff Salaries, Training & Pension	32,076
Staff Travel	2,810
Volunteers & Families	1,152
Premises Hall Rental	320
Administration	1,008
Governance	2640
Fundraising	0

<b>Total</b>	<b>40,006</b>
--------------	---------------

<b>Surplus/(Deficit) for Year</b>	<b>3,143</b>
-----------------------------------	--------------

<b>Unrestricted Reserves</b>	<b>10,880</b>
------------------------------	---------------

<b>Restricted Reserves</b>	<b>12,775</b>
----------------------------	---------------







# STATISTICS

## 2022-2023



Families Visited at home 24

Families Who Attended the Group 26

Families with Complex Need 9

Families Signposted 20

Total Number of Volunteers 20

New Volunteers Trained 8



# HOME-START TEIGNBRIDGE

Charity Number 1152371

Company Number 8232066

## Annual Accounts

April 1 2022 – 31 March 2023

Home-Start Teignbridge		Charity No	1152371		
		Company No	8232066		
Annual accounts for the period					
Period start date	1/4/2022	To	Period end date	31/3/2023	

## Section A Statement of financial activities (including summary income and expenditure account)

Recommended categories by activity		Guidance Note	Unrestricted funds £ F01	Restricted income funds £ F02	Endowment funds £ F03	Total funds £ F04	Prior year funds £ F05
<b>Income</b>							
<b>Income and endowments from:</b>							
Donations and legacies		2	7,458	-	-	7,458	3,251
Charitable activities							
	Group Activities	3	-	13,393	-	13,393	5,319
	Home Visiting	3	-	22,133	-	22,133	24,111
<b>Other Trading Activities</b>		4	-	-	-	-	-
<b>Investments</b>		5	165	-	-	165	2
<b>Total</b>			7,623	35,526	-	43,149	32,683
<b>Expenditure (Notes 6)</b>							
<b>Expenditure on:</b>							
Raising funds		6	-	-	-	-	-
Charitable activities							
	Group Activities	6	-	9,805	-	9,805	4,026
	Home Visiting		3,176	24,385	-	27,561	33,124
Other		6	2,640	-	-	2,640	1,717
<b>Total</b>			5,816	34,190	-	40,006	38,867
<b>Other recognised gains/(losses)</b>							
Gains and losses on revaluation of fixed assets for the charity's own use			-	-	-	-	-
Gains and losses on investment assets			-	-	-	-	-
<b>Net movement in funds</b>			1,807	1,336	-	3,143	( 6,184 )
<b>Total funds brought forward</b>			9,073	11,439	-	20,512	26,696
<b>Total funds carried forward</b>			10,880	12,775	-	23,655	20,512

## Section B

## Balance sheet

		Total this year £	Total last year £
<b>Fixed assets</b>			
Tangible assets			
Investments			
<b>Total fixed assets</b>		-	-
<b>Current assets</b>			
Debtors	11	-	-
Deposit Accounts	23	11,957	11,793
Cash at bank and in hand	13	12,530	9,695
<b>Total current assets</b>		24,487	21,488
<b>Creditors: amounts falling due within one year</b>	12	822	966
<b>Net current assets/(liabilities)</b>		23,665	20,522
<b>Total assets less current liabilities</b>		23,665	20,522
<b>Creditors: amounts falling due after one year</b>	12	-	-
Trustees Guarantee Account		10	10
<b>Net assets</b>		23,655	20,512
<b>Funds of the Charity</b>			
Unrestricted funds		1,214	407
Designated funds (Note 10)		9,666	8,666
<b>Total unrestricted funds</b>		10,880	9,073
Restricted income funds (Note 10)		12,775	11,439
<b>Total funds</b>		23,655	20,512

Signed on behalf of all the trustees

Signature

Date of approval

Lindsay Dudge

19-Jun-23

Chairman

## Note 1 Basis of preparation

*This section should be completed by all charities.*

## 1.1 Basis of accounting

These accounts have been prepared under the historical cost convention with items recognised at cost or transaction value unless otherwise stated in the relevant note(s) to these accounts.

The accounts have been prepared in accordance with:

- |             |   |   |
|-------------|---|---|
| • and with* | ü | the Statement of Recommended Practice: Accounting and Reporting by Charities preparing their accounts in accordance with the Financial Reporting Standard applicable in the UK and Republic of Ireland (FRS 102) issued on 16 July 2014 |
| • and with* | ü | the Financial Reporting Standard applicable in the United Kingdom and Republic of Ireland (FRS 102)   |
- and with the Charities Act 2011.

The charity constitutes a public benefit entity as defined by FRS 102.\*

The charitable company meets the definition of a public benefit entity under FRS 102

\* -Tick as appropriate

## 1.2 Going concern

*If there are material uncertainties related to events or conditions that cast significant doubt on the charity's ability to continue as a going concern, please provide the following details or state "Not applicable", if appropriate:*

An explanation as to those factors that support the conclusion that the charity is a going concern;

*The trustees consider there are no material uncertainties about the charitable company's ability to continue as a going concern*

## 1.3 Change of accounting policy

The accounts present a true and fair view and no changes have been made to the accounting policies adopted in note { }.

Yes*	ü	* -Tick as appropriate
No*		

*Please disclose:*

<i>(i) the nature of the change in accounting policy;</i>	
<i>(ii) the reasons why applying the new accounting policy provides more reliable and more relevant information; and</i>	
<i>(iii) the amount of the adjustment for each line affected in the current period, each prior period presented and the aggregate amount of the adjustment relating to periods before those presented, 3.44 FRS102 SORP.</i>	

## 1.4 Changes to accounting estimates

No changes to accounting estimates have occurred in the reporting period (3.46 FRS102 SORP).

Yes*	ü	* -Tick as appropriate
No*		

*Please disclose:*

<i>(i) the nature of any changes;</i>	
<i>(ii) the effect of the change on income and expense or assets and liabilities for the current period; and</i>	
<i>(iii) where practicable, the effect of the change in one or more future periods.</i>	

## 1.5 Material prior year errors

No material prior year error have been identified in the reporting period (3.47 FRS102 SORP).

Yes*	ü	* -Tick as appropriate
No*		

*Please disclose:*

<i>(i) the nature of the prior period error;</i>	
<i>(ii) for each prior period presented in the accounts, the amount of the correction for each account line item affected; and</i>	
<i>(iii) the amount of the correction at the beginning of the earliest prior period presented in the accounts.</i>	



## Note 2

## Accounting policies

## 2.2 INCOME

## Recognition of income

These are included in the Statement of Financial Activities (SoFA) when:

- the charity becomes entitled to the resources;
- it is more likely than not that the trustees will receive the resources;
- the monetary value can be measured with sufficient reliability.

Yes*	No*	N/a*
ü	ü	ü

## Offsetting

There has been no offsetting of assets and liabilities, or income and expenses, unless required or permitted by the FRS 102 SORP or FRS 102.

Yes*	No*	N/a*
ü	ü	ü

## Grants and donations

Grants and donations are only included in the SoFA when the general income recognition criteria are met (5.10 to 5.12 FRS102 SORP).

Yes*	No*	N/a*
ü	ü	ü

In the case of performance related grants, income must only be recognised to the extent that the charity has provided the specified goods or services as entitlement to the grant only occurs when the performance related conditions are met (5.16 FRS 102 SORP).

Yes*	No*	N/a*
ü	ü	ü

## Support costs

The charity has incurred expenditure on support costs.

Yes*	No*	N/a*
ü	ü	ü

## Volunteer help

The value of any voluntary help received is not included in the accounts but is described in the trustees' annual report.

Yes*	No*	N/a*
ü	ü	ü

## Income from interest, royalties and dividends

This is included in the accounts when receipt is probable and the amount receivable can be measured reliably.

Yes*	No*	N/a*
ü	ü	ü

## 2.3 EXPENDITURE AND LIABILITIES

## Liability recognition

Liabilities are recognised where it is more likely than not that there is a legal or constructive obligation committing the charity to pay out resources and the amount of the obligation can be measured with reasonable certainty.

Yes*	No*	N/a*
ü	ü	ü

## Governance and support costs

Support costs have been allocated between governance costs and other support. Governance costs comprise all costs involving public accountability of the charity and its compliance with regulation and good practice.

Yes*	No*	N/a*
ü	ü	ü

Support costs include central functions and have been allocated to activity cost categories on a basis consistent with the use of resources, eg allocating property costs by floor areas, or per capita, staff costs by the time spent and other costs by their usage.

Yes*	No*	N/a*
ü	ü	ü

## Grants with performance conditions

Where the charity gives a grant with conditions for its payment being a specific level of service or output to be provided, such grants are only recognised in the SoFA once the recipient of the grant has provided the specified service or output.

Yes*	No*	N/a*
ü	ü	ü

## Redundancy cost

The charity made no redundancy payments during the reporting period.

Yes*	No*	N/a*
ü	ü	ü

## Deferred income

No material item of deferred income has been included in the accounts.

Yes*	No*	N/a*
ü	ü	ü

## Creditors

The charity has creditors which are measured at settlement amounts less any trade discounts

Yes*	No*	N/a*
ü	ü	ü

## Provisions for liabilities

A liability is measured on recognition at its historical cost and then subsequently measured at the best estimate of the amount required to settle the obligation at the reporting date

Yes*	No*	N/a*
ü	ü	ü

## Basic financial instruments

The charity accounts for basic financial instruments on initial recognition as per paragraph 10.7 FRS102 SORP. Subsequent measurement is as per paragraphs 11.17 to 11.19, FRS102 SORP.

Yes*	No*	N/a*
ü	ü	ü

## 2.4 ASSETS

## Debtors

Debtors (including trade debtors and loans receivable) are measured on initial recognition at settlement amount after any trade discounts or amount advanced by the charity. Subsequently, they are measured at the cash or other consideration expected to be received.

Yes*	No*	N/a*
ü	ü	ü

POLICIES ADOPTED  
ADDITIONAL TO OR  
DIFFERENT FROM  
THOSE ABOVE

**Section C** **Notes to the accounts** **(cont)**

**Note 3** **Income**

	Analysis of income	Unrestricted funds	Restricted income funds	Endowment funds	Total funds £	Prior year £
<b>Donations and legacies:</b>						
	Donations and gifts	967	-	-	967	1,751
	Gift Aid	-	-	-	-	-
	Legacies	-	-	-	-	-
	General grants provided by other charities	6,491	-	-	6,491	1,500
		-	-	-	-	-
	<b>Total</b>	<b>7,458</b>	<b>-</b>	<b>-</b>	<b>7,458</b>	<b>3,251</b>
<b>Charitable activities:</b>						
<b>Family Group</b>						
	Family Group	-	534	-	534	428
	Children in Need	-	5,891	-	5,891	4,891
	Teigbridge District Council	-	6,968	-	6,968	-
	<b>Sub total</b>	<b>-</b>	<b>13,393</b>	<b>-</b>	<b>13,393</b>	<b>5,319</b>
<b>Home/Telephone Support</b>						
	Children in Need	-	4,529	-	4,529	5,029
	Awards For All	-	-	-	-	9,914
	Claire Milne Trust	-	8,986	-	8,986	-
	Woodward Trust	-	750	-	750	-
	Norman Family Trust	-	-	-	-	2,000
	Garfield Weston	-	5,000	-	5,000	-
	Pears Foundation	-	-	-	-	4,668
	Pilgrim Trust	-	-	-	-	2,500
	David Gibbons Trust	-	2,868	-	2,868	-
	<b>Sub total</b>	<b>-</b>	<b>22,133</b>	<b>-</b>	<b>22,133</b>	<b>24,111</b>
	Other	-	-	-	-	-
	<b>Total</b>	<b>-</b>	<b>35,526</b>	<b>-</b>	<b>35,526</b>	<b>29,430</b>
<b>Other trading activities:</b>						
		-	-	-	-	-
		-	-	-	-	-
	Other	-	-	-	-	-
	<b>Total</b>	<b>-</b>	<b>-</b>	<b>-</b>	<b>-</b>	<b>-</b>
<b>Income from investments:</b>						
	Interest income	165	-	-	165	2
	Dividend income	-	-	-	-	-
	Rental and leasing income	-	-	-	-	-
	Other	-	-	-	-	-
	<b>Total</b>	<b>165</b>	<b>-</b>	<b>-</b>	<b>165</b>	<b>2</b>

**TOTAL INCOME** **7,623** **35,526** **-** **43,149** **32,683**

Check with SOFA  
43,149 32,683

**Other recognised gains/(losses)**

Gains and losses on revaluation of fixed assets for the charity's own use	-	-	-	-	-
Gains and losses on investment assets	-	-	-	-	-
<b>Net movement in funds</b>	<b>1,807</b>	<b>1,336</b>	<b>-</b>	<b>3,143</b>	<b>( 6,184 )</b>
<b>Total funds brought forward</b>	<b>9,073</b>	<b>11,439</b>	<b>-</b>	<b>20,512</b>	<b>26,696</b>
<b>Total funds carried forward</b>	<b>10,880</b>	<b>12,775</b>	<b>-</b>	<b>23,655</b>	<b>20,512</b>

**Other information:**

All income in the prior year was restricted except for:

Misc Donations (£1751) Other Grants (£1500)

## Note 6

## Expenditure

		Analysis of expenditure	Unrestricted funds	Restricted income funds	Endowment funds	Total funds £	Prior year £
Expenditure on raising funds:			-	-	-	-	-
		Staging fundraising events			-	-	
		Advertising, marketing, direct mail and publicity			-	-	-
		Other trading activities			-	-	-
		<b>Total expenditure on raising funds</b>	-	-	-	-	-
Expenditure on Charitable Activities	Family Group	Staffing		8,960	-	8,960	3,199
		Staff Travel		416		416	416
		Volunteers & Families		109	-	109	211
		Training			-	-	-
		Hall Rental		320		320	200
		Office Admin			-	-	-
		<b>Sub total</b>	-	9,805	-	9,805	4,026
	Home/Telephone Support	Staffing	2,208	20,908	-	23,116	29,968
		Staff Travel		2,394	-	2,394	1,391
		Volunteers & Families	374	574	-	948	82
		Staff & Volunteer Training		95	-	95	541
		Office Admin	594	414	-	1,008	1,142
		<b>Sub total</b>	3,176	24,385	-	27,561	33,124
<b>Total expenditure on charitable activities</b>		3,176	34,190	-	37,366	37,150	
Other	Office Premises			-	-	105	
	Governance	2,640		-	2,640	1,612	
	Depreciation			-	-	-	
	<b>Total other expenditure</b>	2,640	-	-	2,640	1,717	
<b>TOTAL EXPENDITURE</b>			5,816	34,190	-	40,006	38,867

Check with SOFA

40,006 | 38,867

**Note 7**                      **Details of certain types of expenditure**

**Note 7.1 Fees for examination of the accounts**

*Please provide details of the amount paid for any statutory external scrutiny of accounts and other services provided by your independent examiner. If nothing was paid please enter '0' in the appropriate box(es).*

**Independent examiner’s fees**

**Assurance services other than independent examination**

**Tax advisory fees**

**Other fees (for example: financial advice, consultancy, accountancy services) paid to the independent examiner**

This year £	Last year £
0	0
0	0
0	0
0	0

## Note 8 Paid employees

Please complete this note if the charity has any employees (transactions with Trustees dealt with in Note 28)

## 8.1 Staff Costs

	This year £	Last year £
Salaries and wages	29,868	30,752
Social security costs		
Pension costs (defined contribution pension plan)	2,208	2,415
Staff Training		
Redundancy cost		
<b>Total staff costs</b>	<b>32,076</b>	<b>33,167</b>

Please provide details of expenditure on staff working for the charity whose contracts are with and are paid by a related party

Please give details of the number of employees whose total employee benefits (excluding employer pension costs) fell within each band of £10,000 from £60,000 upwards. If there are no such transactions, please enter 'true' in the box provided.

No employees received employee benefits (excluding employer pension costs) for the reporting period of more than £60,000

Band	Number of employees
£60,000 to £69,999	0
£70,000 to £79,999	0
£80,000 to £89,999	0
£90,000 to £99,999	0
£100,000 to £109,999	0

Please provide the total amount paid to key management personnel (includes trustees and senior management) for their services to the charity. For specific amounts paid to trustees, see Note 28.

## 8.2 Average head count in the year

The parts of the charity in which the employees work

	This year Number	Last year Number
Fundraising	-	-
Charitable Activities	1	2
Governance	-	-
Other	-	-
<b>Total</b>	<b>1</b>	<b>2</b>

## 8.3 Ex-gratia payments to employees and others (excluding trustees)

Please complete if an ex-gratia payment is made.

Please explain the nature of the payment

Please state the legal authority or reason for making the payment

Please state the amount of the payment (or value of any waiver of a right to an asset)

## 8.4 Redundancy payments

Please complete if any redundancy or termination payment is made in the period.

Total amount of payment

The nature of the payment (cash, asset etc.)

The extent of redundancy funding at the balance sheet date

Please state the accounting policy for any redundancy or termination payments



**Note 9** Defined contribution pension scheme or defined benefit scheme accounted for as a defined contribution scheme.

**9.1** Please complete this note if a defined contribution pension scheme is operated.

Amount of contributions recognised in the SOFA as an expense	£2,208.00
Please explain the basis for allocating the liability and expense of defined contribution pension scheme between activities and between restricted and unrestricted funds.	<p>Employer pension contribution £1493.40</p> <p>Pension - Past Service Deficit £714.60</p> <p>This is paid from unrestricted funds</p>

**9.2** Please complete this section where the charity participates in a defined benefit pension plan but is unable to ascertain its share of the underlying assets and liabilities.

Please confirm that although the scheme is accounted for as a defined contribution plan, it is a defined benefit plan.

Please provide such information as is available about the plan's surplus or deficit and the implications, if any, for the reporting charity

**9.3** Please complete this section where the charity participates in a multi-employer defined benefit pension plan that is accounted for as a defined contribution plan.

Describe the extent to which the charity can be liable to the plan for other entities' obligations under the terms and conditions of the multi-employer plan

Explain how any liability arising from an agreement with a multi-employer plan to fund a deficit has been determined.

## Note 11 Debtors and prepayments

*Please complete this note if the charity has any debtors or prepayments.*

### 11.1 Analysis of debtors

Trade debtors

Prepayments and accrued income

Other debtors

This year £	Last year £
	-
-	-
-	-
<b>Total</b> -	<b>-</b>

*Complete 11.2 where a material debtor is recoverable more than a year after the reporting date.*

### 11.2 Disclosure of debtors recoverable in more than 1 year (included in debtors above)

Trade debtors

Prepayments and accrued income

Other debtors

This year £	Last year £
-	-
-	-
-	-
<b>Total</b> -	<b>-</b>

**Note 12 Creditors and accruals**

*Please complete this note if the charity has any creditors or accruals.*

**12.1 Analysis of creditors**

	Amounts falling due within one year		Amounts falling due after more than one year	
	This year £	Last year £	This year £	Last year £
Loan from the Monument Trust	-	-		
Bank loans and overdrafts	-	-	-	-
Trade creditors	-	224	-	-
Payments received on account for contracts or performance-related grants	-	-	-	-
Accruals and deferred income			-	-
Taxation and social security	520	444	-	-
Other creditors	302	298	-	-
<b>Total</b>	<b>822</b>	<b>966</b>	<b>-</b>	<b>-</b>

**12.2 Deferred income**

*Please complete this note if the charity has deferred income.*

*Please explain the reasons why income is deferred.*

--

***Movement in deferred income account***

Balance at the start of the reporting period

Amounts added in current period

Amounts released to income from previous periods

Balance at the end of the reporting period

This year £	Last year £
-	-
-	-
-	-
-	-

Note 13    Cash at bank and in hand

Short term cash investments (less than 3 months maturity date)
Short term deposits
Cash at bank
Cash on hand
Other
Total

This year £	Last year £
-	-
11,957	11,793
12,486	9,610
44	85
-	-
24,487	21,488

**Note 14**                      **Charity funds**

**14.1 Details of material funds held and movements during the CURRENT reporting period**

*Please give details of the movements of material individual funds in the reporting period together with a balancing figure for 'Other funds' (which should include revaluation reserve and fair value reserve, if applicable). The 'Total funds' figure below should reconcile to 'Total funds' in the balance sheet.*

*\* Key: PE - permanent endowment funds; EE - expendable endowment funds; R - restricted income funds, including special trusts, of the charity; and U - unrestricted funds*

Fund names	Type PE, EE R or UR *	Purpose and Restrictions	Fund balances brought forward £	Income £	Expenditure £	Transfers £	Gains and losses £	Fund balances carried forward £
Core Funding			407	7,623	- 5,816	- 1,000	-	1,214
Designated Funding			8,666	-	-	1,000	-	9,666
Family Group			287	534	- 629	-	-	192
Children in Need			3,163	10,420	- 8,750	-	-	4,833
Teigbridge District Council				6,968	- 6,968			
Awards For All			2,951		- 2,951	-	-	-
Claire Milne Trust			-	8,986	- 6,750	-	-	2,236
Woodward Trust			-	750	- 420	-	-	330
Norman Family Trust			1,100		- 1,100	-	-	-
Garfield Weston			-	5,000	- 1,250	-	-	3,750
Pears Foundation			3,938		- 3,938	-	-	-
Pilgrim Trust			-			-	-	-
David Gibbons Trust			-	2,868	- 1,434	-	-	1,434
<b>Other funds (balancing figure)</b>	<b>N/a</b>	<b>N/a</b>	-	-	-	-	-	-
<b>Total Funds as per balance sheet</b>			<b>20,512</b>	<b>43,149</b>	<b>- 40,006</b>	<b>-</b>	<b>-</b>	<b>23,655</b>

Check                      40,006  
-                              40,006  
-                              -

Fund balances carried forward include assets and liabilities denominated in a foreign currency	Yes*	No*
	<input type="checkbox"/>	<input type="checkbox"/>

<p><i>If yes, please state the basis on which the assets and/or liabilities have been translated into sterling (or the currency in which the accounts are drawn up).</i></p>	
--	--



**Note 14**                      **Charity funds**

**14.2 Details of material funds held and movements during the PREVIOUS reporting period**

*Please give details of the movements of material individual funds in the reporting period together with a balancing figure for 'Other funds' (which should include revaluation reserve and fair value reserve, if applicable). The 'Total funds' figure below should reconcile to 'Total funds' in the balance sheet.*

*\* Key: PE - permanent endowment funds; EE - expendable endowment funds; R - restricted income funds, including special trusts, of the charity; and U - unrestricted funds*

Fund names	Type PE, EE R or UR *	Purpose and Restrictions	Fund balances brought forward £	Income £	Expenditure £	Transfers £	Gains and losses £	Fund balances carried forward £
Core Funding			793	3,253	- 3,639	-	-	407
Designated Funding			8,666	-	-	-	-	8,666
Family Group			470	428	- 611	-	-	287
Children in Need			-	9,920	- 6,757	-	-	3,163
Awards For All			6,492	9,914	- 13,455	-	-	2,951
Claire Milne Trust			-	-	-	-	-	-
Devon Community Foundation			-	-	-	-	-	-
Norman Family Trust			-	2,000	- 900	-	-	1,100
HS-UK Crisis Fund			10,275	-	- 10,275	-	-	-
Pears Foundation			-	4,668	- 730	-	-	3,938
Pilgrim Trust			-	2,500	- 2,500	-	-	-
			-	-	-	-	-	-
<b>Other funds (balancing figure)</b>	<b>N/a</b>	<b>N/a</b>	-	-	-	-	-	-
<b>Total Funds as per balance sheet</b>			<b>26,696</b>	<b>32,683</b>	<b>- 38,867</b>	<b>-</b>	<b>-</b>	<b>20,512</b>

Fund balances carried forward include assets and liabilities denominated in a foreign currency	Yes*	No*
	<input type="checkbox"/>	<input checked="" type="checkbox"/> ii

## Note 14

## Charity funds (cont)

## 14.3 Transfers between funds

	Reason for transfer and where endowment is converted to income, legal power for its conversion	Amount
Between unrestricted and restricted funds		
Between endowment and restricted funds		
Between endowment and unrestricted funds		

## 14.4 Designated funds

Planned use	Purpose of the designation	Amount
Staff Redunancy	Redundancy payments in the event of the charity not having enough funds to continue operating	9,666

**Note 15 Transactions with trustees and related parties**

If the charity has any transactions with related parties (other than the trustee expenses explained in guidance notes) details of such transactions should be provided in this note. If there are no transactions to report, please enter "True" in the box or "False" if there are transactions to report.

**15.1 Trustee remuneration and benefits**

None of the trustees have been paid any remuneration or received any other benefits from an employment with their charity or a related entity (True or False)

TRUE

In the period the charity has paid trustees remuneration and benefits. Please give the amount of, and legal authority for, any remuneration or other benefits paid to a trustee by the charity or any institution or company connected with it.

Name of trustee	Legal authority (eg order, governing document)	Amounts paid or benefit value					Last year
		This year					
		Remuneration	Pension contribution	Redundancy (including loss of office)/ex gratia payment	Other	TOTAL	
		£	£	£	£	£	

Please give details of why remuneration or other employment benefits were paid.

Where an ex gratia payment has been made to a trustee, provide an explanation of the nature of the payment.

If a third party has been reimbursed for providing one or more trustees, state the nature of the payment and amount of the reimbursement.

State the number of trustees to whom retirement benefits are accruing under a defined contribution pension scheme.

0

**15.2 Trustees' expenses**

If the charity has paid trustees expenses for fulfilling their duties, details of such transactions should be provided in this note. If there are no transactions to report, please enter "True" in the box below. If there are transactions to report, please enter "False".

No trustee expenses have been incurred (True or False)

TRUE

Type of expenses reimbursed	This year	Last year
	£	£
Travel		
Subsistence		
Accommodation		
Other (please specify):		
TOTAL		

Please provide the number of trustees reimbursed for expenses or who had expenses paid by the charity

**15.3 Transaction(s) with related parties**

Please give details of any transaction undertaken by (or on behalf of) the charity in which a related party has a material interest, including where funds have been held as agent for related parties. If there are no such transactions, please enter 'true' in the box provided.

There have been no related party transactions in the reporting period (True or False)

TRUE

Name of the trustee or related party	Relationship to charity	Description of the transaction(s)	Amount		Balance at period end	Provision for bad debts at period end	Amounts written off during reporting period
			£		£	£	£

In relation to the transactions above, please provide the terms and conditions, including any security and the nature of any payment (consideration) to be provided in settlement.

For any related party, please provide details of any guarantees given or received.



Section A

Independent Examiner's Report

Report to the trustees/  
members of

Charity Name

HOME-START TEIGNBRIDGE

On accounts for the year  
ended

31 March 2023

Charity no  
(if any)

1152371

Set out on pages

(remember to include the page numbers of additional sheets)

I report to the trustees on my examination of the accounts of the above charity ("the Trust") for the year ended DD/MM/YYYY.

Responsibilities and  
basis of report

As the charity trustees, you are responsible for the preparation of the accounts in accordance with the Charities Act 2011 ("the Act").

I report in respect of my examination of the Trust's accounts carried out under section 145 of the 2011 Act and in carrying out my examination, I have followed all the applicable Directions given by the Charity Commission under section 145(5)(b) of the Act.

Independent  
examiner's statement

[The charity's gross income exceeded £250,000 and I am qualified to undertake the examination by being a qualified member of [insert name of applicable listed body]]. Delete [ ] if not applicable.

I have completed my examination. I confirm that no material matters have come to my attention (other than that disclosed below \*) in connection with the examination which gives me cause to believe that in, any material respect,:

- the accounting records were not kept in accordance with section 130 of the Act; or
- the accounts did not accord with the accounting records; or
- the accounts did not comply with the applicable requirements concerning the form and content of accounts set out in the Charities (Accounts and Reports) Regulations 2008 other than any requirement that the accounts give a 'true and fair' view which is not a matter considered as part of an independent examination.

I have no concerns and have come across no other matters in connection with the examination to which attention should be drawn in this report in order to enable a proper understanding of the accounts to be reached.

\* Please delete the words in the brackets if they do not apply.

Signed:

*C Jones*

Date:

15/6/2023

Name:

CHRISTOPHER JONES

Relevant professional  
qualification(s) or body  
(if any):

FMAAT

Address:

BEST ACCOUNTANCY SERVICES (NEWTON  
ABBOT) LTD, 9 MARKET STREET  
NEWTON ABBOT, TQ12 2RJ

## Section B

## Disclosure

Only complete if the examiner needs to highlight matters of concern (see CC32, Independent examination of charity accounts: directions and guidance for examiners).

Give here details of any items that the examiner wishes to disclose.