

Registered number  
08113141

Chabad Lubavitch Of Birmingham Campuses Limited

Report and Accounts

30 June 2024

**Chabad Lubavitch Of Birmingham Campuses Limited**  
**Accountants' Report**

**Accountants' report to the directors of**  
**Chabad Lubavitch Of Birmingham Campuses Limited**

You consider that the company is exempt from an audit for the year ended 30 June 2024. You have acknowledged, on the balance sheet, your responsibilities for complying with the requirements of the Companies Act 2006 with respect to accounting records and the preparation of accounts. These responsibilities include preparing accounts that give a true and fair view of the state of affairs of the company at the end of the financial year and of its profit or loss for the financial year.

In accordance with your instructions, we have prepared the accounts which comprise the Profit and Loss Account, the Balance Sheet and the related notes from the accounting records of the company and on the basis of information and explanations you have given to us.

We have not carried out an audit or any other review, and consequently we do not express any opinion on these accounts.



AccountancyNetwork  
Accountants for Business

4A Scotch Orchard  
Lichfield  
Staffs  
WS13 6BZ

5 February 2025

**Chabad Lubavitch Of Birmingham Campuses Limited**

**Registered number: 08113141**

**Directors' Report**

The directors present their report and accounts for the year ended 30 June 2024.

**Principal activities**

The company's principal activity during the year continued to be the provision of student support services and activities on the Birmingham campuses.

**Directors**

The following persons served as directors during the year:

Y A J Angyalfi  
E D Brackman  
Y Y Cheruff  
P P Efune  
J C Golomb

**Small company provisions**

This report has been prepared in accordance with the provisions in Part 15 of the Companies Act 2006 applicable to companies subject to the small companies regime.

This report was approved by the board on 5 February 2025 and signed on its behalf.



Y Y Cheruff  
Director

**Chabad Lubavitch Of Birmingham Campuses Limited**  
**Profit and Loss Account**  
**for the year ended 30 June 2024**

	<b>2024</b> <b>£</b>	<b>2023</b> <b>£</b>
<b>Turnover</b>	150,999	132,328
<b>Cost of sales</b>	(64,340)	(54,010)
<b>Gross profit</b>	<u>86,659</u>	<u>78,318</u>
<b>Administrative expenses</b>	(94,150)	(54,228)
<b>Operating (loss)/profit</b>	<u>(7,491)</u>	<u>24,090</u>
<b>Interest receivable</b>	9	-
<b>(Loss)/profit before taxation</b>	<u>(7,482)</u>	<u>24,090</u>
<b>Tax on (loss)/profit</b>	-	-
<b>(Loss)/profit for the financial year</b>	<u>(7,482)</u>	<u>24,090</u>



**Chabad Lubavitch Of Birmingham Campuses Limited****Registered number: 08113141****Balance Sheet****as at 30 June 2024**

	Notes	2024 £	2023 £
<b>Fixed assets</b>			
Tangible assets	3	460,955	464,955
<b>Current assets</b>			
Cash at bank and in hand		13,284	21,362
<b>Creditors: amounts falling due within one year</b>	4	(138,549)	(143,145)
<b>Net current liabilities</b>		(125,265)	(121,783)
<b>Net assets</b>		<u>335,690</u>	<u>343,172</u>
<b>Capital and reserves</b>			
Profit and loss account		335,690	343,172
<b>Shareholder's funds</b>		<u>335,690</u>	<u>343,172</u>

The directors are satisfied that the company is entitled to exemption from the requirement to obtain an audit under section 477 of the Companies Act 2006.

The member has not required the company to obtain an audit in accordance with section 476 of the Act.

The directors acknowledge their responsibilities for complying with the requirements of the Companies Act 2006 with respect to accounting records and the preparation of accounts.

The accounts have been prepared and delivered in accordance with the special provisions applicable to companies subject to the small companies regime. The profit and loss account has not been delivered to the Registrar of Companies.

Y Y Cheruff

Director

Approved by the board on 5 February 2025

**Chabad Lubavitch Of Birmingham Campuses Limited**  
**Notes to the Accounts**  
**for the year ended 30 June 2024**

**1 Accounting policies**

***Basis of preparation***

The accounts have been prepared under the historical cost convention and in accordance with FRS 102, The Financial Reporting Standard applicable in the UK and Republic of Ireland (as applied to small entities by section 1A of the standard).

***Creditors***

Short term creditors are measured at transaction price (which is usually the invoice price). Loans and other financial liabilities are initially recognised at transaction price net of any transaction costs and subsequently measured at amortised cost determined using the effective interest method.

**2 Employees**

	<b>2024</b>	<b>2023</b>
	<b>Number</b>	<b>Number</b>
Average number of persons employed by the company	<u>2</u>	<u>2</u>

**3 Tangible fixed assets**

	<b>Land and buildings £</b>
<b>Cost</b>	
Additions	<u>460,955</u>
At 30 June 2024	<u>460,955</u>
<b>Depreciation</b>	
At 30 June 2024	<u>-</u>
<b>Net book value</b>	
At 30 June 2024	<u>460,955</u>
At 30 June 2023	<u>460,955</u>

**4 Creditors: amounts falling due within one year**

	<b>2024</b>	<b>2023</b>
	<b>£</b>	<b>£</b>
Loans	137,000	137,000
Taxation and social security costs	-	225
Other creditors	<u>1,549</u>	<u>5,920</u>
	<u>138,549</u>	<u>143,145</u>

**5 Other information**

Chabad Lubavitch Of Birmingham Campuses Limited is a company limited by guarantee and consequently does not have share capital.

The Registered office is  
11 Oakfield Road  
Birmingham  
West Midlands  
B297JS

**Chabad Lubavitch Of Birmingham Campuses Limited**  
**Detailed profit and loss account**  
**for the year ended 30 June 2024**

*This schedule does not form part of the statutory accounts*

	2024 £	2023 £
<b>Sales</b>		
Grants & Donations	<u>150,999</u>	<u>132,328</u>
<b>Cost of sales</b>		
Food, catering and events	54,432	48,950
Other direct costs	<u>9,908</u>	<u>5,060</u>
	<u>64,340</u>	<u>54,010</u>
<b>Administrative expenses</b>		
Employee costs:		
Wages and salaries	9,000	9,000
Directors' salaries	9,000	9,000
Pensions	165	166
Staff training and welfare	2,220	-
Travel and subsistence	<u>6,004</u>	<u>1,277</u>
	<u>26,389</u>	<u>19,443</u>
Premises costs:		
Storage rent	13,728	-
Property repairs	16,643	-
Light and heat	4,966	8,620
Cleaning	<u>6,931</u>	<u>3,349</u>
	<u>42,268</u>	<u>11,969</u>
General administrative expenses:		
Telephone and fax	751	727
Stationery/postage	3,281	3,091
Bank charges	446	247
Insurance	1,358	4,956
Repairs and maintenance	-	7,748
Depreciation	-	1,000
Student support	2,602	-
Donations	4,298	-
Sundry expenses	<u>11,917</u>	<u>4,207</u>
	<u>24,653</u>	<u>21,976</u>
Legal and professional costs:		
Accountancy fees	<u>840</u>	<u>840</u>
	<u>840</u>	<u>840</u>
	<u>94,150</u>	<u>54,228</u>

## **CHABAD LUBAVITCH OF BIRMINGHAM CAMPUSES:**

### **Trustees' report (incorporating directors' report)**

**for the year ended 30th June 2024**

The trustees present their annual report and financial statements for the year ended 30th June 2024.

### **Reference and Administrative Information**

Reference and administrative information is shown on page 1 of the financial statements and forms part of this report.

### **Constitution:**

The Charity is constituted as a limited company governed by the Memorandum and Articles of Association dated 20th June 2012.

### **Organisational structure**

The power to appoint new trustees is vested in the current board. It is not the intention of the trustees of the charity to appoint any new trustees. Should the situation change in the future, the trustees will apply suitable recruitment induction and training procedures. All funds are raised by the trustees.

### **Objects for Public Benefit**

The objects are to advance and promote and provide facilities for the practice of the Jewish Religion in accordance with Orthodox Jewish tenets.

The trustees have considered the Charity Commission's general guidance on public benefit.

### **Review of Activities and Achievements**

The trustees are satisfied with results for the year.

### **Reserve Policy**

The trustees do not seek to maintain reserves other than to ensure that the charity is able to continue to operate.

### **Risk Review**

The trustees have confirmed that there are no major risks to which the charity is exposed.

This report has been prepared in accordance with the special provisions relating to companies subject to the small companies regime within part 15 of the companies Act 2006.

Approved by the trustees on the 1st of April 2024 and signed on their behalf by



**Yosef Cheruff    Director - Trustee**

AUTUMN - WINTER 5784/ 2023

# APPRECIATION REPORT



**YOUR VITAL SUPPORT:  
STANDING STRONG WITH OUR JEWISH  
STUDENTS DURING THIS CHALLENGING TIME**

[BIRMINGHAMCHABAD.COM](http://BIRMINGHAMCHABAD.COM)



# AWAKENING DAVID'S JEWISH SOUL

Growing up, David faced the bitter sting of antisemitism, a struggle he grappled with without fully understanding what it meant to be Jewish. As a student in Birmingham, he joined the Sinai Scholars programme this term.

**Something remarkable happened in David's life. He connected with the teachings on a profound level, and the pieces of his identity began to fall into place.**

The once-confusing puzzle of his Jewish roots started to make sense. With newfound understanding and connection, he put on Tefillin for the first time, speaking volumes about the transformation happening within him.

David reflects on his journey, saying, "Taking part in this course has been an

enlightening experience. I have started to observe some of the Mitzvot, and it has helped me create a space in which I can transcend the physical."

Your investment in knowledge and education extends beyond David's story.

"I have really loved spending time with like-minded university students who are as interested in learning about Judaism as I am. I am grateful for this opportunity and excited to continue to learn and grow with my community!" shares Katie Freedman, one of the enthusiastic participants. Izaak Roberts echoes the sentiment, expressing how Sinai Scholars has been a "fun and engaging experience that has brought me closer to Judaism." Ella Goldwater adds a unique perspective, noting, "Sinai

scholars have given me a new and fascinating perspective of Judaism. The trip to the Mikvah, in particular, enabled me to experience my Judaism rather than just learning in a classroom. I feel the connection of our ancient traditions to the modern world."

**In today's climate, your support in the education of our young people through the Sinai Scholars programme is more important than ever.**

**Your investment is shaping journeys like David's.**

Through your support, you are helping create a community of knowledgeable, engaged individuals who carry the torch of Judaism into the future. Thank you for being an essential part of David's transformative story and the education of our future leaders!



## CELEBRATING THE HIGH HOLIDAY: YOUR IMPACT BEYOND BORDERS

**Your generosity truly shaped the High Holiday celebrations, ensuring that our Chabad community thrives physically and spiritually.** The Pre-fast Yom Kippur meal nourished the body and souls of our students. The Chabad Sukkah, transformed by your commitment, became a joyous hub, reinforcing that sense of belonging and community we all cherish. Thanks to your support, door-to-door visits brought the beauty of Lulav and Etrog directly to our students, creating a connection to our shared heritage.



## SHABBAT SHALOM: OVER 100 FRESHERS UNITE FOR THE FIRST SHABBAT OF THE YEAR!

The joyous sound of laughter and camaraderie filled the air as over 100 freshers came together to celebrate the first Shabbat of the year. It was heart warming to witness new friendships being forged, a strong foundation for the tight-knit community that continues to flourish here at Chabad. **Your partnership gives a sense of belonging and community to students during their university experience.**

"I am so grateful to Chabad and its special donors for providing me with a home from home, somewhere to feel safe and comfortable!" expresses Amy Brown, highlighting the impact of your support on individual experiences.





## MITZVAHS FOR ISRAEL & CANDLE LIGHTING: YOUR IMPACT AT WORK

Shortly after Simchat Torah we gathered to "Do a Mitzvah for Israel," committing to positive change. Each student pledged a new mitzvah, showing unity and Jewish pride in these challenging times.

**Your generosity also lit up the Candle Lighting Campaign for Israel, bringing light and spirit to hundreds of Jewish students. Thanks for making a positive impact and being part of our journey!**



## CHALLAH BAKE AND DELIVERIES: SPREADING LOVE THROUGH YOUR KINDNESS

Your contribution made the Challah bake and deliveries to the elderly a heartwarming reality. The aroma of freshly baked Challah filled the air, and **your kindness brought not just delicious challah but also warmth and companionship to the homes of the elderly in our community.**



## THE SECRET OF THE JEWISH WOMAN: YOUR SUPPORT FOR EMPOWERMENT

Female university students, inspired by your support, gathered to explore "The Secret of the Jewish Woman."

Allie Bohm reflects on the impact, saying, "This course has deepened my understanding of what it means to be a young Jewish woman in an ever-changing modern society. The importance and relevance of Jewish values in everyday life, such as relationships or raising a family, is often overlooked. But this course has encouraged me to see these values and teachings as a power and as a gift that I will carry with me always."

**Mai Ozon shares a sentiment of joy, stating, "The highlight of our week - we learn with laughter and a light heart, it brightens our soul."**

Your contribution has empowered these students on a journey of self-discovery and exploration, fostering a deeper connection to their femininity according to the Torah and Kabbalah.



## YOU SPREAD THE CHANUKAH CHEER WITH CARE PACKAGES!

Thanks to your incredible generosity, we've been on a mission to brighten up everyone's Chanukah with our awesome care packages! Packed with menorahs, candles, dreidels, chocolate coins, latkes, and doughnuts, these packages are like a Chanukah party in a box. But it wasn't just for the lucky recipient – we encouraged everyone to share the Chanukah love with their Jewish or non-Jewish flatmates! **Thank you for making celebrating our Judaism at university a cosy and joyous experience for everyone!**

# FROM THE DESK OF RABBI YOSSEI & RIVKI



Dear Cherished Partner,

We hope this newsletter finds you well.

As the first term of the academic year ends, We would like to share the incredible impact that your generous support has had on our student community here at Birmingham Campuses.

This has been a challenging time for Jewish students, navigating pain, fear, and uncertainty. Your support has become a lifeline, thank you!

Your partnership truly makes a profound difference in their lives. We're delighted to share these highlights of the inspiring moments your support helped create.

**Thank you for being here with us, standing on the front lines, supporting students physically, emotionally, and spiritually. Together, we are emerging stronger and more connected.**

Your generosity is not just a financial contribution but an investment in the growth, connection, and enrichment of our community.

With heartfelt prayers for our brothers and sisters in the Holy Land and the safety of Jewish people worldwide.

We are so grateful for the part that you are doing for the Jewish people in Birmingham.  
Am Yisrael Chai!

Thank you,

*Yossi and Rivki Cheruff*

Directors, Chabad on Campus, Birmingham



## WOULD YOU LIKE TO CONTINUE TO SUPPORT THE JEWISH STUDENTS AND COMMUNITY?

- ☐ **Yes! I'd like to continue making a difference for the students and community.**
- ☐ **£1000 - Provide a full week of classes and activities**
- ☐ **£500 - Sponsor Shabbat for the students**
- ☐ **£250 - Sponsor a Sinai Scholars Session**
- ☐ **£180 - Sponsor a Loaves of Love**
- ☐ **Please Gift Aid my donation**



Please talk to me about  
leaving a legacy to  
Chabad Lubavitch of  
Birmingham Campuses.

### 3 Easy Ways to Donate:

1. Send a Cheque in the enclosed envelope
2. Bank transfer to Chabad Lubavitch of Birmingham Campuses.  
Sort code 40-51-62  
Account number 65468017
3. Donate online at [BirminghamChabad.com/donate](https://BirminghamChabad.com/donate)



Name: \_\_\_\_\_

Chabad of Birmingham Campuses is an independant charity 1152308  
11 Oakfield Road, Selly Park Birmingham, B29 7HH.  
Yossi 07805 092236 Rivki 07805 367672 [Rabbicheruff@gmail.com](mailto:Rabbicheruff@gmail.com)





# APPRECIATION REPORT

## YOUR VITAL SUPPORT:

**Standing Strong with Our  
Jewish Students During this  
Challenging Time**

2024

SUMMER  
EDITION

BIRMINGHAMCHABAD.COM



# ILLUMINATING HOPE

## YOUR SUPPORT EMPOWERS RESILIENCE ON CAMPUS

In the face of recent challenges on campus, your unwavering support continues to be a beacon of hope and strength for our community.

Despite the shadows of adversity, a radiant light of resilience and Jewish pride shines brightly, illuminating our campus.

Jewish students, undeterred by the encampment's presence, proudly displayed their heritage, with Tefillin on their arms, Challah in hand, and Shabbat candles aglow.

**These moments of pride and resilience are made possible by your generous support, serving as a testament to the transformative impact of your belief in Jewish life on campus.**

Your dedication empowers us with courage and determination, fostering a community where hope prevails. Thank you for your steadfast support in illuminating hope and resilience on our campus.



### Family News and Celebration: MENDEL'S BAR MITZVAH!

Thank you to all those who sent good wishes and or joined Mendel's first Tefillin experience and Bar Mitzvah! It was truly a community celebration, and as they say "it takes a village to raise a child".

All of you far and near are part of our village and community and we could not be more proud parents and grateful to our friends and extended family who have a huge part in Mendel's upbringing and becoming of a man.

**Your generosity empowers students and extended community to embrace their Judaism joyfully and join in these kind of celebrations.** Thank you for lighting up these moments and supporting our community.



### Special Purim Students, Faculty, and Community

Thanks to your generous support, Purim was a joyous occasion for students, faculty, and our wider community. You made it possible to create a vibrant celebration, filled with joy, laughter and camaraderie.

**Your support ensured that everyone could come together to experience the magic of Purim, fostering connection and strengthening our community.**

We are deeply grateful for your commitment to making meaningful experiences like this possible. Thank you for your generosity and dedication!

# THANKS TO YOU, RACHEL EXPERIENCED HER FIRST SEDER



**Rachel's first Seder at Chabad was a night she'll never forget.**

She felt curious and excited as she walked in, unsure of what to expect. But thanks to the warmth and hospitality of the Chabad community, she quickly felt right at home.

From the lively discussions to the interactive rituals, Rachel was amazed by how inclusive and welcoming everyone was.

One moment that really stood out to Rachel was when the children recited the "Mah Nishtanah" (Four Questions) followed by all the adults together. It made her think deeply about the importance of imparting our values to the next generation.

**Participating in the Seder also helped Rachel feel more connected to her Jewish identity and understand the true meaning of freedom.**

Rachel asked us to thank the generous donors who make these events possible. Without your support, she wouldn't have had this unforgettable experience.

## MAZEL TOV!

We are delighted to share and celebrate the wonderful milestones within our community.

Here are some joyous occasions we are thrilled to announce:

- **Ron and Sarah Davis** on the birth of a great-granddaughter.
- **Abigail Gilbert and Tolly Cohen** on your marriage.
- **Hannah Glass and Gidon Ross** on your marriage.
- **Natasha Hertz and Dov Seitler** on your marriage.
- **Joel and Elisha Marks** on the birth of **Haleli Tzofiya**.
- **Nyman Family** on the birth of twin grandchildren.
- **Miriam and Josh Nassim** on the birth of **Natan Eliav**.
- **Josh and Rachel Caplan** on the birth of **Micah Raphael**.
- **Tammy Kwartz and Jacob Gersch** on your upcoming wedding.
- **Natalia Berke and Simmy Wahnnon** on your upcoming wedding.

## STRENGTHENING FOUNDATIONS: YOUR SUPPORT FOR THE NEW ROOF

We are thrilled to announce the completion of a vital project: a new roof for our Chabad House. This renovation was urgently needed to address issues of leaking and mold. Thank you for your generous support. Your contribution made this essential upgrade possible, ensuring the safety and comfort of all who gather under its roof for years to come.

**With your support, the Chabad House remains a welcoming and secure space where our Jewish students can come together to celebrate, learn, and grow.**

We are immensely grateful for your support in safeguarding the heart of our community. Thank you for your generosity and dedication.



## TASTE THE JOY YOU BRING:

A RECIPE TO SAVOR AND SHARE

### Everything Cabbage Salad

- 2 sweet potatoes, peeled and diced
- 1 white cabbage, shredded
- ½ cup dried cranberries
- 1 cup pomegranate seeds
- 3 spring onions, thinly sliced

#### Dressing:

- 1/3 cup olive oil
- 1/3 cup balsamic vinegar
- 2 Tbsp maple syrup
- 2 Tbsp honey
- 2 tsp mustard
- Pinch salt

1. Roast the sweet potatoes in olive oil, salt and pepper.
2. Assemble the salad.
3. Combine dressing ingredients, shake or mix well.
4. Mix salad with dressing shortly before serving.

**Enjoy!**





# FROM THE DESK OF RABBI YOSSEI & RIVKI

Dear Cherished Partner,

We hope this newsletter finds you well.

As the academic year draws to a close, we are excited to share the incredible impact your generous support has had on our student community here at Birmingham Campuses.

This has been a challenging time for Jewish students, navigating fear and uncertainty, particularly during the anti-Israel encampment. However, your unwavering support has provided students with strength and Jewish pride.

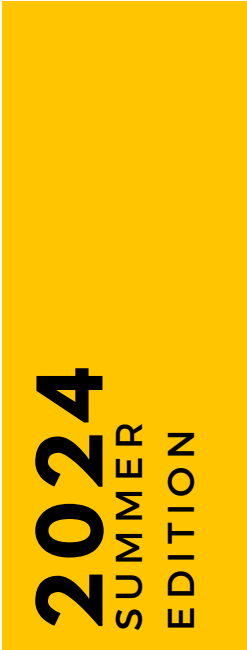
Through tefillin, challah, and Shabbat candles on campus, you have empowered them to maintain their identity and connection to their heritage during these difficult moments. Thank you for being here with us, standing on the front lines, supporting students physically, emotionally, and spiritually. Together, we are emerging stronger and more connected.

With heartfelt prayers for our brothers and sisters in the Holy Land and the safety of Jewish people worldwide. Am Yisrael Chai!

Thank you,

*Yossi and Rivki Cheruff*

Rabbi Yossi and Rivki Cheruff  
Directors, Chabad on Campus, Birmingham



## WOULD YOU LIKE TO CONTINUE STANDING STRONG WITH OUR STUDENTS?

**Yes! I'd like to continue supporting our students!**

- ☐ £1000 Campus Guardian
- ☐ £500 Student Supporter
- ☐ £360 Mitzvah Maker
- ☐ £180 Community Builder

Name: \_\_\_\_\_

☐ Please Gift Aid my donation



Please talk to me about leaving a legacy to Chabad Lubavitch of Birmingham Campuses.

### 3 Easy Ways to Donate:

1. Send a Cheque in the enclosed envelope
2. Bank transfer to Chabad Lubavitch of Birmingham Campuses. Sort code 40-51-62. Account number 65468017
3. Donate online at [BirminghamChabad.com/donate](https://BirminghamChabad.com/donate)



Chabad Lubavitch of Birmingham Campuses  
is an independant charity 1152308

11 Oakfield Road, Selly Park Birmingham, B29 7HH.

Yossi: 07805 092236 Rivki: 07805 367672 [Rabbicheruff@gmail.com](mailto:Rabbicheruff@gmail.com)