

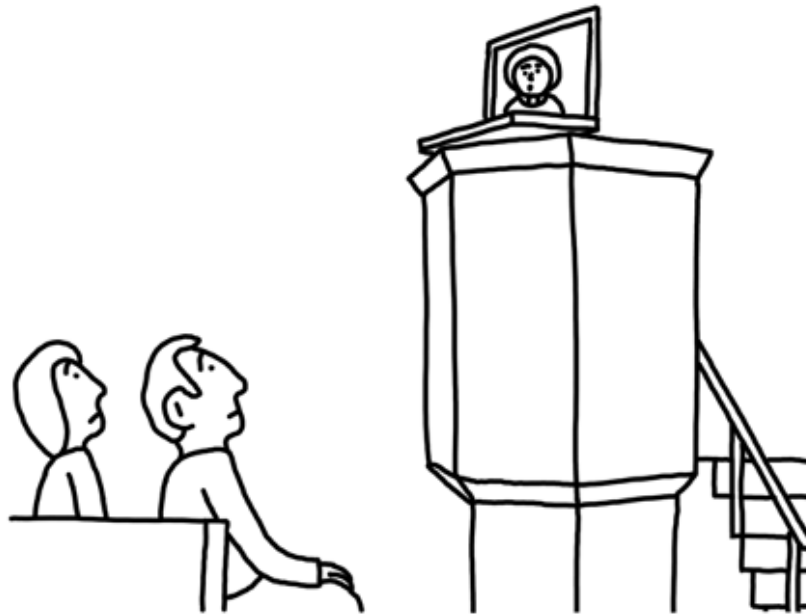


CHURCH FOR ALL INCLUDING YOU

ST BARNABAS' CLAPHAM COMMON

WWW.STBCC.CO.UK

2021 ANNUAL REPORT



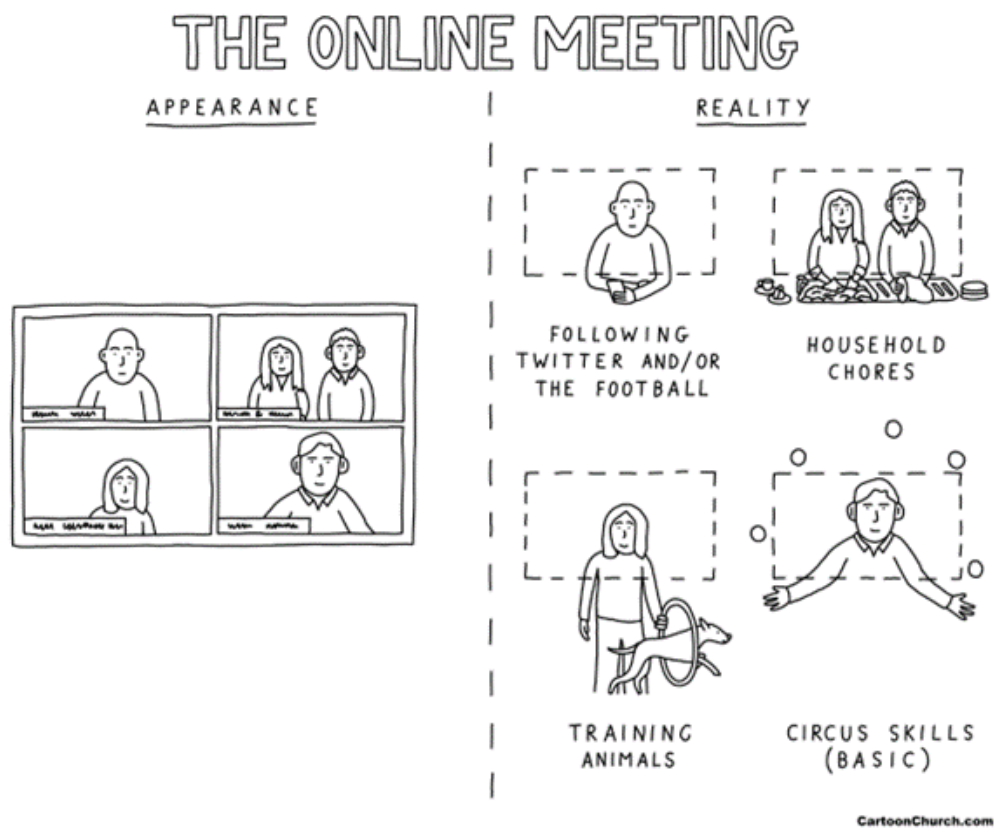
PAROCHIAL CHURCH COUNCIL

22 MAY 2022

This is the annual report of the Parochial Church Council (PCC) of St. Barnabas' Church, Clapham Common for 2021. It was collectively written and contains a review of the year, the statement on the responsibilities of the PCC, a treasurer's report and a summary of the church accounts. A full set of accounts with the description of the accounting policies and the independent examiner's report on the church accounts is available separately.

VICAR'S REPORT

I know, I know. Grateful enough as we were for it at the time, no one needs to be reminded about doing church on Zoom – it seems so 2020 after all and really, no one wants to go back there. However, to give credit where it is due, in 2021, Zoom did permit an Easter Day service (complete with Word Cloud), enable PCC to go about its monthly business and provide the means for me as Area Dean to lead another church's Annual Meeting, too. But as the cartoon suggests, what we see happening online may very well be partial – it's always possible that there is more going on than meets the eye - and, as it happens, this is very true of church, as well.



As this year's very visual Annual Report illustrates, a lot happened in the life of St Barnabas 2021, much of which you might not have got to see at the time. And of course, what makes this possible, is the contribution of many volunteering themselves to serve, remembering especially those chief volunteers whom we call Wardens, Hopey and Mike.

Whether you prefer your Annual Report online or printed out, I hope that this year's version will get your undivided attention.

Rev Richard Taylor

CURATE'S REPORT

See how time flies ... hard to believe that I am coming up to two years as a curate since being at St Barnabas from June 2020.

The last year has certainly been an enriching one as I have been able to do more pastoral visits than the previous year; had more insight and participated in almost all that is part of the DNA of this church (apart from 'bring and share lunch' which is yet to come!).

Being part of the ministry team here, under Richard's leadership, has been (and continues to be) a rewarding experience as we welcome all that God wants to do in and through us.

Rev Ian Luke-Macauley

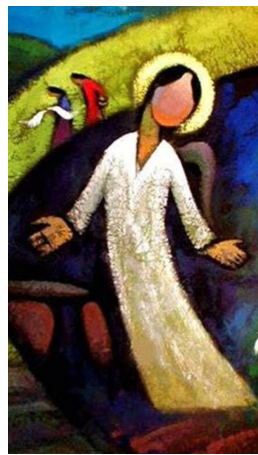
LOCKDOWN 2



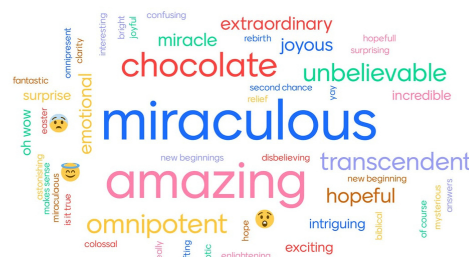
The year 2021 started with a second lockdown that prevented public gatherings. Services were online but the church opened for private prayers. We held an afternoon vigil service following the disappearance of Sarah Everard and commemorated the anniversary of the 1st lockdown with a service, private prayers and ribbons tied on the railings.

EASTER

Easter marked a return to 'in-person' services with a 6am Easter sunrise service, followed by a mid-morning online service that, as shown by this Word Cloud, enabled creative interaction. After Easter, services and groups in church gradually returned as restrictions were eased.



What words describe the story now?



CHILDREN & YOUNG PEOPLE



Sunday provision for children and young people remained online the 1st half of the year with zoom meetings and videos of bible stories and craft. Our groups, returned from September with Film Bible Study for Yrs 12&13, Grid for Yr7-11, Splash for Rec to Yr 6 as well as monthly family and all age services.

PASTORAL OFFICES



We were delighted to celebrate our 1st baptism of the year on 13 June 2021 once restrictions were lifted: Joah Fabiyi was baptised after having had to cancel twice because of lockdowns. There were a total of ten baptisms, two socially-distanced weddings with a maximum of 30 people and six funerals. Some services were live streamed to reach family and friends across the globe. In October, Sam Matthews, Finlay Taylor, Jeremy Simmons and Gabby Waters were confirmed by Bishop Michael.

ORDINATIONS



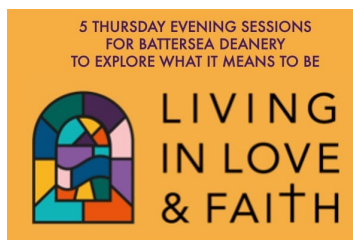
The first half of the year ended with celebrations for our former parish assistants: Amanda Arthur was priested on the 23rd of June in Walsall whilst Susan Wright was ordained deacon on the 26th of June. Ian Luke-Macauley, our curate, was priested on 3rd July before presiding in St Barnabas the following day with Bishop Antony Poggo deaconing.

COMMUNITY GROUPS



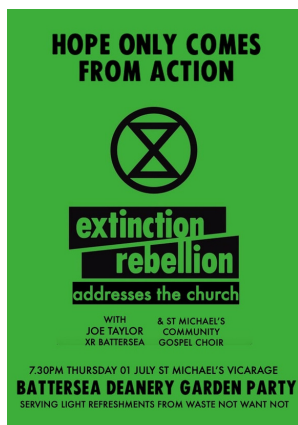
Community groups gradually resumed meetings from May with Barney's welcoming families, delighted to meet other parents and 'lockdown' babies and the Tuesday Bible Study and Thursday Fellowship groups gradually resuming meetings. We were delighted with the return of the traditional July Garden Party at the vicarage. After many years of leadership, group leaders Cicely Meehan, Margaret Hind and Lena O'Dwyer decided to take a much deserved break. We thank them for their commitment and dedication over the years and we thank Pat Shabaan for her continued leadership as well as Yvonne Langley for taking the lead. The neighbourhood groups formed in 2020 continued to meet and welcome new members.

COURSES



We ran two courses in 2021. The Lent course, led online by Vicky & Ian was an opportunity to retrace the steps of Jesus in the desert, through videos, readings and reflections. In September, we ran a new course, this time in person: Living in Love & Faith explored questions about identity, sexuality, relationships and marriage.

BATTERSEA DEANERY SYNOD



Battersea Deanery Synod were glad to be back together in person for the Summer Garden Party at St Michael's Vicarage with tasty food provided by Waste Not Want Not, uplifting music from the Community Gospel Choir and an urgent challenge from XR Wandsworth. It had been a quieter year for Battersea Welcomes Refugees on the whole but the evacuation from Afghanistan in August meant readying ourselves for the expected arrival of Afghan families in Battersea in 2022. The Synod met a total of three times in 2021; and after six years in the role, Richard will finish as Area Dean in September 2022.

LETTINGS & FINANCE



The easing of restrictions enabled the return of some groups from April but lettings operated at less than half the capacity. Despite this, we were delighted to offer a venue to a new support group after what had been a very difficult period for people suffering from addictions. We also tried out new ventures with an outdoor coffee van, Howling Owl, to make the most of our spaces, indoor and outdoor.

Overall, the shortfall of income experienced in 2020 continued through to 2021 as restrictions prevented a normal level of lettings and services were impacted by the lockdown. This was partly made up by the rise in regular donations which help meet our pledge to the Parish Support Fund, pay staff and maintenance costs and support our mission in the parish and beyond. Thank you for your continuing generosity.

MISSION GIVING

In 2021, the PCC allocated £4,750 (5% of voluntary giving) for our annual Mission Giving, with £850 going to Deanery Schools, £800 to Friends of the Earth, £800 to Care for the Family, £800 to International Justice Mission and £1,500 to Citizens UK (see below to read about what we got up to in our first year of membership in the Wandsworth Alliance).

GLASSDOOR



Rotating night shelters remained closed but hot dinners were served every night for the 2020/2021 season (3 times a week from St Barnabas). This was not repeated for the 2021/2022 season as Glassdoor focused on securing sheltered accommodation and providing support to the homeless community. Five members of church participated in the annual Sleep Out to help raise funds for GlassDoor - this photo taken c.4.30am on 02 October 2022 after spending the night in Duke of York Square.

CITIZENS UK



In February, we joined Citizens UK' online training for the South London Listens which marked the beginning of a new campaign: to help improve mental health services. Later on in October, seven members of church attended another training session to learn how to do Community Organising.

FABRICS

No major works were undertaken in 2021 but we made the most of the 'quiet' period to renovate the flooring of the Choir Vestry; and in anticipation of new front doors in 2022, the stone work around the entrance was cleaned up as well.

PARISH CHURCH COUNCIL



The PCC Trustees share responsibility for promoting the whole mission of the Church, its financial accountability, safeguarding users, the maintenance, preservation and insurance of the fabric of the Grade II listed building. They met 9 times in 2021 including once outdoors in the vicarage garden.

Hopey Wilson continued as warden to oversee our Sundays, joined by Michael Burton to focus on the fabrics. We thank Yvonne Langley who stepped down after serving for seven years.

SAFEGUARDING

St Barnabas adheres to the Diocesan guidance *A Safe Church* when it comes to protecting vulnerable groups within the church environment. Using the Diocesan Annual Safeguarding Review, the Vicar, churchwardens and parish safeguarding officers (Sarita Rampat and Sandrine Simmons) systematically check procedures and then the PCC as a whole re-affirms its commitment to safeguarding children, vulnerable adults and those at risk of domestic abuse. Measures include carrying out DBS checks on groups' leaders, pastoral team members, PCC members and ensuring hirers agree to observe the church's safeguarding policies. Policies of our practice and for responding to concerns can be found on the notice board and copies of the manual are available for reference at the back of the worship area, in the office, and online from our website and the Diocesan website.

ELECTORAL ROLL

The roll was revised in 2021. There were 112 members.

STAFF

There were no changes to the staff team in 2021. Anna Foxley, a new ordinand studying part time at St Mellitus has joined us on placement as part of her training.

The church is located on the north side of Clapham Common at the corner of Lavender Gardens.

Correspondence should be addressed to:

Rev. Richard Taylor,
St. Barnabas' Church
Clapham Common North Side
London SW4 9SW
Tel:020 7223 5953
Email:vicar@stbcc.co.uk

St Barnabas' Church, Charity Number: 1151362

STATEMENT OF FINANCIAL ACTIVITIES

	Unrestricted funds	Designated funds	Restricted funds	Endowment funds	Total funds	Prior year total funds
Income and endowments from:						
Donations and legacies	79,570	2,284	500	—	82,354	98,249
Income from charitable activities	11,365	—	—	—	11,365	6,566
Other trading activities	36,489	—	—	—	36,489	26,793
Investments	12	—	—	—	12	173
Other income	9,542	—	—	—	9,542	8,542
Total income	136,978	2,284	500	—	139,762	140,322
Expenditure on:						
Raising funds	187	—	—	—	187	711
Expenditure on charitable activities	134,350	4,191	1,130	—	139,671	150,514
Other expenditure	425	—	—	—	425	425
Total expenditure	134,962	4,191	1,130	—	140,283	151,651
Net income / (expenditure) resources before transfer	2,016	(1,907)	(630)	—	(521)	(11,328)
Transfers						
Gross transfers between funds - in	—	—	—	—	—	3,000
Gross transfers between funds - out	—	—	—	—	—	(3,000)
Other recognised gains / losses						
Net movement in						
Restricted RT Area Dean	—	—	7	—	7	637
					(521)	(11,328)
Total funds brought forward	87,281	15,005	637	—	102,923	114,251
Total funds carried forward	89,297	13,098	7	—	102,401	102,923
Represented by						
Unrestricted						
General fund	89,297	—	—	—	89,297	87,281
Designated						
BWR	—	3,651	—	—	3,651	5,771
Barneys Group	—	2,542	—	—	2,542	2,442
Flowers	—	10	—	—	10	10
NightShelter	—	1,337	—	—	1,337	1,473
Organ	—	351	—	—	351	351
Stonework	—	5,207	—	—	5,207	4,957
Restricted						
RT Area Dean	—	—	7	—	7	637

BALANCE SHEET

Class and code	Description	This year	Last year
Fixed assets			
6432	St Matthew's Trust	—	—
6437	Vicar's Float	300	300
6438	Dishwasher	1,276	1,701
	Total Fixed assets	1,576	2,001
Current assets			
6501	CAF Bank Current Account	58,150	62,499
6510	CCLA (CBF) Deposit Account	13,685	13,678
6520	CCLA (COIF) Deposit Account	41,919	41,914
6590	Cash in hand	—	—
6591	Soldo <u>PrePaid</u> Card	728	899
Z05	Accounts Receivable	1,575	500
Z22	Late Income	—	—
	Total Current assets	116,058	119,490
Liabilities			
6601	Grants/Loans received	7,050	7,050
6699	Agency collections	—	—
Z04	Accounts Payable	1,188	3,773
Z19	Mission Giving	6,995	7,745
	Total Liabilities	15,233	18,568
	Net Asset surplus(deficit)	102,401	102,923
Reserves			
	Excess / (deficit) to date	(521)	(11,328)
Z01	Starting balances	102,923	114,251
Z02	Other gains/(losses)	—	—
	Total Reserves	102,401	102,923
	Represented by funds		
	Unrestricted	89,297	87,281
	Designated	13,098	15,005
	Restricted	7	637
	Endowment	—	—
	Total	102,401	102,923

St Barnabas Church

Clapham Common

End of Year Financial Statements

31st December 2021

Statement of Financial Activities

	Unrestricted funds	Designated funds	Restricted funds	Endowment funds	Total funds	Prior year total funds
Income and endowments from:						
Donations and legacies	79,570	2,284	500	—	82,354	98,249
Income from charitable activities	11,365	—	—	—	11,365	6,566
Other trading activities	36,489	—	—	—	36,489	26,793
Investments	12	—	—	—	12	173
Other income	9,542	—	—	—	9,542	8,542
Total income	136,978	2,284	500	—	139,762	140,322
Expenditure on:						
Raising funds	187	—	—	—	187	711
Expenditure on charitable activities	134,350	4,191	1,130	—	139,671	150,514
Other expenditure	425	—	—	—	425	425
Total expenditure	134,962	4,191	1,130	—	140,283	151,651
Net income / (expenditure) resources before transfer	2,016	(1,907)	(630)	—	(521)	(11,328)
Transfers						
Gross transfers between funds - in	—	—	—	—	—	3,000
Gross transfers between funds - out	—	—	—	—	—	(3,000)
Other recognised gains / losses						
Net movement in funds	2,016	(1,907)	(630)	—	(521)	(11,328)
Total funds brought forward	87,281	15,005	637	—	102,923	114,251
Total funds carried forward	89,297	13,098	7	—	102,401	102,923
Represented by						
Unrestricted						
General fund	89,297	—	—	—	89,297	87,281
Designated						
BWR	—	3,651	—	—	3,651	5,771
Barneys Group	—	2,542	—	—	2,542	2,442
Flowers	—	10	—	—	10	10
NightShelter	—	1,337	—	—	1,337	1,473
Organ	—	351	—	—	351	351
Stonework	—	5,207	—	—	5,207	4,957
Restricted						
RT Area Dean	—	—	7	—	7	637

Balance sheet

Class and code	Description	This year	Last year
Fixed assets			
6432	St Matthew's Trust	—	—
6437	Vicar's Float	300	300
6438	Dishwasher	1,276	1,701
	Total Fixed assets	1,576	2,001
Current assets			
6501	CAF Bank Current Account	58,150	62,499
6510	CCLA (CBF) Deposit Account	13,685	13,678
6520	CCLA (COIF) Deposit Account	41,919	41,914
6590	Cash in hand	—	—
6591	Soldo PrePaid Card	728	899
Z05	Accounts Receivable	1,575	500
Z22	Late Income	—	—
	Total Current assets	116,058	119,490
Liabilities			
6601	Grants/Loans received	7,050	7,050
6699	Agency collections	—	—
Z04	Accounts Payable	1,188	3,773
Z19	Mission Giving	6,995	7,745
	Total Liabilities	15,233	18,568
	Net Asset surplus(deficit)	102,401	102,923
Reserves			
	Excess / (deficit) to date	(521)	(11,328)
Z01	Starting balances	102,923	114,251
Z02	Other gains/(losses)	—	—
	Total Reserves	102,401	102,923
	Represented by funds		
	Unrestricted	89,297	87,281
	Designated	13,098	15,005
	Restricted	7	637
	Endowment	—	—
	Total	102,401	102,923

Statement of assets and liabilities

	General	Designated	Restricted	Endowment	This year	Last year
Fixed assets - Intangible assets						
St Matthew's Trust -	(3,000)	3,000	—	—	—	—
Totals	(3,000)	3,000	—	—	—	—
Fixed assets - Tangible assets						
Vicar's Float -	300	—	—	—	300	300
Dishwasher -	1,276	—	—	—	1,276	1,701
Totals	1,576	—	—	—	1,576	2,001
Current assets - Cash at bank and in hand						
CAF Bank Current Account -	40,658	17,485	7	—	58,150	62,499
CCLA (CBF) Deposit Account -	13,685	—	—	—	13,685	13,678
CCLA (COIF) Deposit Account -	41,919	—	—	—	41,919	41,914
Soldo PrePaid Card -	761	(33)	—	—	728	899
Late Income -	(521)	521	—	—	—	—
Totals	96,503	17,973	7	—	114,483	118,990
Current assets - Debtors						
Accounts Receivable -	1,575	—	—	—	1,575	500
Totals	1,575	—	—	—	1,575	500
Liabilities - Creditors: Amounts falling due in one year						
Grants/Loans received -	—	7,050	—	—	7,050	7,050
Accounts Payable -	863	325	—	—	1,188	3,773
Mission Giving -	6,995	—	—	—	6,995	7,745
Totals	7,858	7,375	—	—	15,233	18,568
Grand total	88,797	13,598	7	—	102,401	102,923

Fund movement by type

		Opening	Incoming	Outgoing	Transfers	Gains/losses	Closing
BWR - BWR							
Designated		5,771	1,900	4,021	—	—	3,651
Sub-total for BWR		5,771	1,900	4,021	—	—	3,651
Flowers - Flowers							
Designated		10	—	—	—	—	10
Sub-total for Flowers		10	—	—	—	—	10
Organ - Organ							
Designated		351	—	—	—	—	351
Sub-total for Organ		351	—	—	—	—	351
SchW - Schools Worker							
Designated		—	—	—	—	—	—
Sub-total for SchW		—	—	—	—	—	—
Stone - Stonework							
Designated		4,957	250	—	—	—	5,207
Sub-total for Stone		4,957	250	—	—	—	5,207
General - General fund							
Unrestricted		87,281	136,978	134,962	—	—	89,297
Sub-total for General		87,281	136,978	134,962	—	—	89,297
Youth - Youth Work							
Restricted		—	—	—	—	—	—
Sub-total for Youth		—	—	—	—	—	—
Battersea - RT Area Dean							
Restricted		637	500	1,130	—	—	7
Sub-total for Battersea		637	500	1,130	—	—	7
Barneys - Barneys Group							
Designated		2,442	100	—	—	—	2,542
Sub-total for Barneys		2,442	100	—	—	—	2,542
Kit - New Kitchen							
Designated		—	—	—	—	—	—
Sub-total for Kit		—	—	—	—	—	—
Night - NightShelter							
Designated		1,473	34	170	—	—	1,337
Sub-total for Night		1,473	34	170	—	—	1,337
Restr - Restricted							
Endowment		—	—	—	—	—	—
Sub-total for Restr		—	—	—	—	—	—
Roof - Roof Fund							
Restricted		—	—	—	—	—	—
Sub-total for Roof		—	—	—	—	—	—
Grand total		102,923	139,762	140,283	—	—	102,401

Analysis of income and expenditure

INCOME AND ENDOWMENTS

					TOTAL	
	Unrestricted	Designated	Restricted	Endowment	This year	Last year
Donations and legacies						
0101 - Gift Aid - Bank	36,728	300	—	—	37,028	47,333
0102 - Non Gift Aid Bank	3,927	—	—	—	3,927	3,407
0103 - CAF Donate	11,715	—	—	—	11,715	1,450
0110 - Gift Aid - Envelopes	1,230	—	—	—	1,230	1,010
0201 - Regular Giving Envelopes	5,426	—	—	—	5,426	5,715
0301 - Loose plate collections	2,779	20	—	—	2,799	2,013
0501 - One-off Gift Aid gifts	—	—	—	—	—	3,540
0550 - Other	5,965	1,714	500	—	8,180	12,216
Donations/Contributions						
0601 - Tax recoverable on Gift Aid	11,699	—	—	—	11,699	15,499
0701 - Legacies	—	—	—	—	—	500
08A1 - Non-recurring one-off grants	100	250	—	—	350	4,110
0901 - Other funds generated	—	—	—	—	—	1,455
Total	79,570	2,284	500	—	82,354	98,249
Income from charitable activities						
1101 - Fees for weddings & funerals	4,052	—	—	—	4,052	2,281
1210 - Sales to promote objectives	—	—	—	—	—	52
1230 - Church hall lettings - objectives	7,313	—	—	—	7,313	4,233
Total	11,365	—	—	—	11,365	6,566
Other trading activities						
0910 - Rummage/cake sales etc	15	—	—	—	15	—
1240 - Church hall lettings-fundraising	36,474	—	—	—	36,474	26,793
Total	36,489	—	—	—	36,489	26,793
Investments						
1020 - Bank & building society interests	12	—	—	—	12	173
Total	12	—	—	—	12	173
Other income						
1030 - Income from lands or buildings	9,542	—	—	—	9,542	8,542
Total	9,542	—	—	—	9,542	8,542
INCOME TOTAL	136,978	2,284	500	—	139,762	140,322

Analysis of income and expenditure

EXPENDITURE

Raising funds

1720 - Costs of stewardship campaig	187	—	—	—	187	336
1730 - Costs of fetes & other events	—	—	—	—	—	375
Total	187	—	—	—	187	711

Expenditure on charitable activities

1801 - Giving to missionary societies	4,190	—	—	—	4,190	4,700
1870 - Secular charities	—	—	—	—	—	280
1901 - Stipends quota to Diocese	61,100	—	—	—	61,100	71,000
2000 - YouthSchoolWorker	—	—	—	—	—	13,303
2003 - Employees NI&Pension contr	1,160	—	—	—	1,160	112
2050 - Finance Co-ordinator Salary	6,786	—	—	—	6,786	6,298
2051 - Church Manager's Salary	12,046	—	—	—	12,046	9,821
2101 - Working expenses of incumb	1,166	—	—	—	1,166	1,564
2120 - Stationery	403	—	—	—	403	506
2135 - Battersea Welcome Refugees	—	3,181	—	—	3,181	3,266
2136 - BWR Coordinator	—	840	—	—	840	1,403
2140 - Organists Fees	515	—	—	—	515	295
2141 - Director of Music pay	6,150	—	—	—	6,150	6,000
2145 - Cleaning Fees	4,584	—	—	—	4,584	2,206
2170 - Education	100	—	—	—	100	500
2201 - Parish training and mission	76	—	—	—	76	—
2301 - Church running - insurance	3,287	—	—	—	3,287	3,204
2310 - Church - Telephone & Wifi	328	—	—	—	328	422
2320 - Organ / piano tuning	262	—	—	—	262	254
2330 - Church maintenance & equi	1,789	—	—	—	1,789	355
2331 - Kitchen and Cleaning Supplies	704	—	—	—	704	1,124
2340 - Provision of services	3,070	—	—	—	3,070	1,758
2350 - Upkeep of churchyard	906	—	—	—	906	3,436
2360 - Administration & Compliance	1,325	—	14	—	1,340	1,104
2401 - Church running - electric	3,255	—	—	—	3,255	3,418
2410 - Church running - gas	3,034	—	—	—	3,034	2,177
2420 - Church running - water	60	—	—	—	60	219
2430 - Diocesan Returns To SLCF	1,041	—	—	—	1,041	962
2501 - Clergy&Staff Lunches/Refres	—	—	87	—	87	377
2510 - Church Flowers	87	—	—	—	87	—
2520 - IT and PA Supplies	1,346	—	—	—	1,346	178
2530 - General Refreshments	440	—	30	—	470	20
2541 - Nightshelter	—	170	—	—	170	733
2580 - Children's Work	297	—	—	—	297	1,353
2590 - Hospitality	—	—	779	—	779	—
2601 - Thank You Gifts	563	—	220	—	783	382
2701 - Church repairs-building&struct	60	—	—	—	60	3,155
2710 - Annual Building Maintenance	309	—	—	—	309	801
2720 - Church interior & exterior dec	5,076	—	—	—	5,076	—
2830 - Clergy Reading	—	—	—	—	—	18
2840 - Clergy Training	—	—	—	—	—	15
2920 - Staff Travel Costs	49	—	—	—	49	20
2921 - Curate Costs	8,784	—	—	—	8,784	3,773
Total	134,350	4,191	1,130	—	139,671	150,514

Other expenditure

2940 - Depreciation	425	—	—	—	425	425
Total	425	—	—	—	425	425

EXPENDITURE TOTAL	134,962	4,191	1,130	—	140,283	151,651
--------------------------	----------------	--------------	--------------	----------	----------------	----------------

GRAND TOTAL	2,016	(1,907)	(630)	—	(521)	(11,328)
--------------------	--------------	----------------	--------------	----------	--------------	-----------------



Section A

Independent Examiner's Report

Report to the trustees/
members of

Charity Name

St Barnabas Church, Clapham Common

On accounts for the year
ended

31st December 2021

Charity no
(if any)

1151362

Set out on pages

(remember to include the page numbers of additional sheets)

Responsibilities and
basis of report

I report to the trustees on my examination of the accounts of the above charity ("the Trust") for the year ended 31/12/2021.

As the charity's trustees, you are responsible for the preparation of the accounts in accordance with the requirements of the Charities Act 2011 ("the Act").

I report in respect of my examination of the Trust's accounts carried out under section 145 of the 2011 Act and in carrying out my examination, I have followed all the applicable Directions given by the Charity Commission under section 145(5)(b) of the Act.

Independent
examiner's statement

I have completed my examination. I confirm that no material matters have come to my attention in connection with the examination which gives me cause to believe that in, any material respect:

- the accounting records were not kept in accordance with section 130 of the Charities Act; or
- the accounts did not accord with the accounting records; or
- the accounts did not comply with the applicable requirements concerning the form and content of accounts set out in the Charities (Accounts and Reports) Regulations 2008 other than any requirement that the accounts give a 'true and fair' view which is not a matter considered as part of an independent examination.

I have no concerns and have come across no other matters in connection with the examination to which attention should be drawn in this report in order to enable a proper understanding of the accounts to be reached.

** Please delete the words in the brackets if they do not apply.*

Signed:

Date:

12/03/2022

Name:

Douglas Pearson

Relevant professional
qualification(s) or body
(if any):

ICAS

Address:	Flat 2, Read House
	Clayton Street
	SE11 5SF, London

Section B	Disclosure
-----------	------------

Only complete if the examiner needs to highlight material matters of concern (see CC32, Independent examination of charity accounts: directions and guidance for examiners).

Give here brief details of any items that the examiner wishes to disclose.

n/a
