

GRAPEVINE ESSEX

FOR PEOPLE WITH LEARNING DISABILITIES



ANNUAL REPORT 2024



Contents

<u>Our Purpose, our Values, our Services</u>	<u>4</u>
<u>Structure and Governance</u>	<u>5</u>
<u>We Listen, We Act, We Care</u>	<u>6</u>
<u>Chair's Annual Review</u>	<u>7</u>
<u>President's Report</u>	<u>8</u>
<u>Club Grapevine</u>	<u>9</u>
<u>Dance Group</u>	<u>10</u>
<u>Activities and Impact</u>	<u>11</u>
<u>What People Say...</u>	<u>12</u>
<u>Fundraising Events</u>	<u>14</u>
<u>Our Benefactors</u>	<u>15</u>
<u>Treasurer's Report</u>	<u>16</u>
<u>Independent Examiner's Report</u>	<u>17</u>
<u>Annual Accounts</u>	<u>18</u>
<u>Spot the Difference</u>	<u>19</u>
<u>Membership Forms</u>	<u>20</u>
<u>Gift Aid Form</u>	<u>22</u>





“Inclusion is not bringing people into what already exists; it is making a new space, a better space for everyone” George Dei

Mission Statement

To make an impact on the lives of adults with learning disabilities by providing the necessary tools for change to enable them to lead active and purposeful lives.

Our purpose, our values, our services:

Grapevine Essex is committed to providing an excellent and professional service to adults with learning disabilities; comprising affordable, confidence building and educational opportunities that teach life skills, support independent living and improve employability.

The supported outings and activities provided ensure valuable

respite to parents and carers, in addition to raising acceptance and awareness of adults with learning difficulties within the general public.

Most of all, we are dedicated to ensuring our members have fun, develop friendships and enhance their lives within a safe, supportive and friendly environment.

Structure and Governance

Grapevine Essex was founded in January 2012 and achieved charity status as a Charitable Incorporated Organisation in March 2013 with the registered Charity Number 1151261. Our governing document is the CIO Constitution, which was also agreed in 2013 and is reviewed on a regular basis.

In accordance with Charity Commission regulations, we have an elected Board of Trustees, who are responsible for the governance of the group. Charity trustees are elected on the basis of the relevant skills and attributes they possess that enable them to perform important functions within the charity. Trustees who were elected at the Annual General Meeting on 1 June 2024 are:

Mrs Jackie Holland	Chair
Mrs Monika Kelly	Treasurer
Mrs Emma Wyatt	Secretary
Mrs Jane Crossman	Trustee
Mr Adrian Heighes	Trustee
Mrs Vanessa Hellier	Trustee
Mrs Sue Johns	Trustee
Mr Simon Jones	Trustee
Mrs Mary Schultz	Trustee

Peter Turrall MBE will continue in his role as President of Grapevine Essex;

with Lord Petre, 18th Baron Petre KCVO, as patron.

Grapevine Essex was formed to meet the need locally for adults with learning disabilities to join a club where they can experience opportunities via our extensive activity programme that would not otherwise be available to them. Grapevine provides over 40 outings and events during the Easter, Summer and Christmas holidays. These can include trips to historical venues, theme parks, theatres, outdoor activity centres, wildlife parks and residential mini-breaks to name just a few.

In term time, we hold two weekly evening clubs - a Dance Group, and Club Grapevine, which is a social club providing organised activities. Both are very well attended.

Belonging to Grapevine Essex helps to motivate our members and improve their quality of life by providing exciting opportunities for them, alongside some regular and familiar activities too. Members form relationships and make friends; and belonging to the 'Grapevine Family' becomes an important part of their lives.



We Listen, We Act, We Care



Jackie Holland & Vanessa Hellier



Mary Schultz



Adrian Heighes



Simon Jones

Grapevine Essex was founded in January 2012 by Jackie Holland and Vanessa Hellier, and at the end of 2024 we had over 160 members. We are honoured to have Peter Turrall MBE as our President, and Lord Petre, 18th Baron Petre KCVO as our Patron.

Jackie's role as Chair of the Board of Trustees and Charity Manager includes planning and organising all the activities and events for members, managing the accounts and overseeing the general running of the charity. Jackie holds qualifications in Emergency First Aid at Work; Risk Assessment; Safeguarding Vulnerable Adults, level 3 (Higher Distinction). Jackie manages the charity from her home in St Osyth.

Vanessa's role as Member Support Manager involves organising the support for members and supervising the volunteer team. She also runs our two weekly clubs during term times: Club Grapevine and the Dance Group. Vanessa holds qualifications in First Aid at Work; Risk Assessment; Safeguarding Vulnerable Adults, level 3 (Higher Distinction); Epilepsy Awareness; Autism Awareness and is qualified to administer Buccal Midazolam.

Mary Schultz works alongside Vanessa in providing support for members and also organises the Art and Craft Workshops. Mary holds qualifications in Emergency First Aid At Work; Risk Assessment;

Safeguarding Vulnerable Adults, level 3 (Higher Distinction) and Autism Awareness.

Adrian Heighes is a Support Assistant for people with complex needs and holds the following qualifications: QCF/NVQ Level Two: Health & Social Care; NVQ Level Three: Employment Law; Understanding Autism, Fire Safety, Health & Safety, Nutrition & Wellbeing, Infection Control & Prevention, Safeguarding Vulnerable Adults, level 3 (Higher Distinction); Dementia Awareness, Makaton, The Autism Act 2009, Manual Handling; First Aid at Work and is qualified to administer Buccal Midazolam.

Simon Jones is a qualified SEN teacher and actively works teaching adults with alternative needs across a broad spectrum at a local Essex College. He holds the following qualifications, DETS / LV5 (teaching diploma), HND in Early Childhood studies and BTEC Level 3 Social Care. Simon has been working within the SEN sector for over fifteen years and is an experienced behaviour support manager, personal assistant, classroom assistant manager and qualified teacher. In a nutshell, Simon loves his job!

All paid and unpaid members of the Grapevine Team have Disclosure and Barring Service (DBS) clearance where required and are encouraged to attend 'Emergency First Aid at Work' training.



Chair's Annual Review



A recent global study has found that nearly 1 in 4 adults feel very to fairly lonely. Despite being more

“connected” than ever, true connection often feels out of reach, even more so if you have a disability.

When we first set up Grapevine Essex, I didn't imagine what a thriving community it would become, where all of us have found a place to belong. It's a safe space, where people are seen, valued, and supported. Where a community thrives, people do too.

2024 was another incredibly busy and rewarding year, with over 40 day trips including two fantastic residential trips. In the spring, we returned to Gaveston Hall in Sussex, where highlights included a visit to the Weald and Downland Living Museum—famous as the home of the beloved TV show *The Repair Shop*—and lunch aboard the charming Bluebell Railway.

In the summer, we headed back to the UK Sailing Academy on the Isle of Wight for more outdoor adventures, including sailing, kayaking, and paddle-boarding. These residential trips offer our members a



wonderful opportunity to build confidence, step outside their everyday environments, and spend quality time with friends in the safe and supportive Grapevine community.

We were delighted to host several successful fundraising events throughout the year, all of which were very well attended. My sincere thanks go to our Trustees and volunteers whose dedication made these events possible, and to everyone who participated and donated so generously (see page 14).

We are also deeply grateful to all our supporters who have provided generous grants and donations. Grapevine simply could not continue without the incredible generosity of our benefactors (see page 15).

Jackie Holland
Chair & Charity Manager

“I love coming to Grapevine because I feel like I belong there”
Amber Wawman



President's Report



the opportunity of gaining confidence in all they undertake by learning and participating in the activities and holidays etc.

I feel very proud to be your President but sorry that I am unable to either participate in weekly activities with you or attend the main events during holiday periods. You are all in the capable hands of the Committee and helpers and I know you respect and enjoy the many activities and weekly Club and Dance events.

Have an enjoyable Summer and enjoy all the activities arranged for you during the year.

Peter A.T. Turrall MBE
President

As your President, it really amazes me to see the wonderful programmes your Committee, under the guidance of the Chair Jackie, arranges for members of Grapevine Essex. Every holiday period there is always something interesting taking place for which you all have the opportunity of participating.

Grapevine Essex has grown gradually over a very short time and is now one of the best disability organisations in the County of Essex with events for everyone. It's backed up by a strong and loyal Committee who give many hours of their time to allow members

"It's inspiring to see how the charity makes a real difference to members' lives through delivering a much needed service within our community"

Emma Wyatt, Trustee and Volunteer



Club Grapevine



Tuesdays 6:30pm-8:30pm, term time only
Moulsham School, Brian Close, Chelmsford CM2 9ES
Contact: Vanessa@grapevinessex.org.uk / 07976 578868

As we reflect on another incredible year at Club Grapevine, I want to take a moment to express my deepest gratitude to all the amazing people who help make our club the welcoming, fun, and supportive community it is.

To our wonderful volunteers and staff—Jane, Sarah B, Adrian, Sarah W, Grace, Emma, Mary, and Simon—thank you for your time, energy, and dedication. Your ongoing support makes everything we do possible.

A special thank you goes to Mary for organising and preparing our arts and crafts evenings, and to Eileen, Pete, and Cathy for all their help during those sessions. These nights are always filled with creativity and laughter thanks to your efforts.

Big thanks also go to Tom for hosting our quiz nights and coming up with fun, challenging questions each time. And, of course, we can't forget DJ Jo Jo, Jan, and Denis for keeping the dance floor alive at our discos! To all the carers who bring our members to the club and support us in so many ways—thank you. Your help is vital, and we truly appreciate everything you do.

We are thrilled to see Club Grapevine growing each year, now welcoming an average of 60 to 65 members each week. We had a few special visitors like Skittleman, Reptile Encounters and the Zest dancers. Activities like Bowling and Disco remain the most popular, and our visits to City Bowl are always a highlight. A big shout-out to their staff for being so friendly and accommodating.

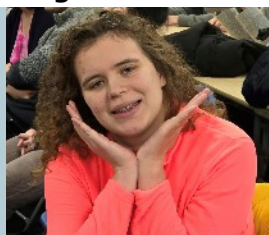
As always, we hope you're enjoying your Tuesday evenings with us. If you have ideas for new activities, please don't hesitate to share—we're always open to suggestions!

This year, we've continued a very special tradition in memory of two much-loved members of our community:

- The *Colin Gooday Kindness Award*, named in honour of Colin's warmth and generosity, was awarded to Paul Wisbey—a truly deserving recipient.
- The *Ian Roberts' Arts and Crafts Award*, celebrating Ian's love of creativity, was presented to Jill O'Donovan for her wonderful contributions. Congratulations, Jill!

Here's to another fantastic year at Club Grapevine. Thank you all for being part of our journey.

Vanessa Hellier, Club Grapevine Manager



Dance Group

Mondays 7:00pm-8:00pm, term time only
The Boswells School, Burnham Road, Chelmsford CM1 6LY
Contact: Vanessa Hellier - Vanessa@grapevinessex.org.uk / 07976 578868



We had some great times performing in the Boswells' shows this year and at the Tillingham Flower Festival in the summer.

A huge thank you to Jean Hunter for her dedication in teaching our classes and for creating new dances when needed. Her creativity and commitment is greatly appreciated! I'd also like to thank our wonderful volunteers—Lynn, Lesley, and Gail—for their dedicated support of our Dance Group. We couldn't do it without you.

This year, the *Katie Whalley Dance Achievement Award* was presented to Alex McGregor in recognition of the support he offered to fellow members during classes. Congratulations, Alex—well deserved!

Vanessa Hellier, Dance Group Manager

The dance team meet weekly during term time at the Boswells School Dance Studio on Monday evenings.

This year we have performed again in the annual Community Dance Show *We Go Together* with great success as usual!

We danced to *Texas Hold 'Em* by Beyonce and Jive Bunny, with great support from the school, now led by Rob Gentle.

Our dancers are always super dedicated, hard working and fun loving!

Many thanks also to Vanessa and Monika for their work looking after the finances and costumes.

Jean Hunter, Dance Tutor

Activities and Impact

In 2024, Grapevine Essex delivered a vibrant and diverse programme of 41 outings, including two residential stays, tailored to the needs and interests of our members.

Over 1,300 individual places were offered across all events. 97% of available places were booked, demonstrating high demand and strong engagement. The activities catered to a wide range of interests and abilities, helping members build confidence, improve mental well-being, and strengthen social connections

Our calendar featured an exciting mix of opportunities, including:

- West End shows and local theatre trips
- Boat trips, pub lunches, fishing, and watching banger racing

- Visits to castles, museums, historic sites, and stately homes
- Water sports, guided tours, and zoo/animal park visits and bowling
- Art and craft workshops, along with cooking sessions and other life skills activities

To ensure a well-rounded experience, our activities were grouped into five key categories: Life Enhancing; Educational; Creative; Fitness & Exercise; and Life Skills

We strive to be inclusive and adventurous—there is little we won't consider when designing our activity programmes. This broad approach supports our mission to promote mental well-being, boost self-esteem, and help members lead more connected and fulfilling lives.

Fig 1

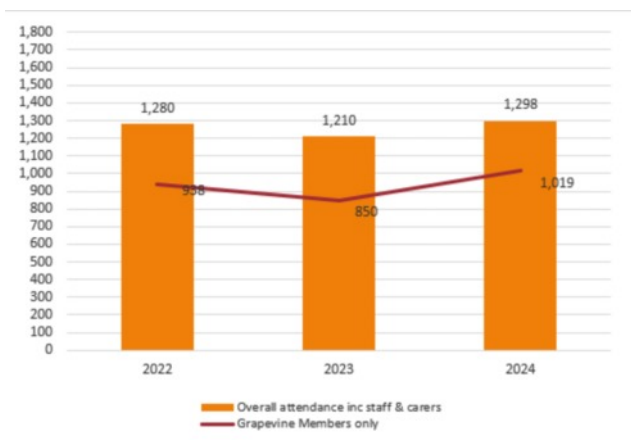
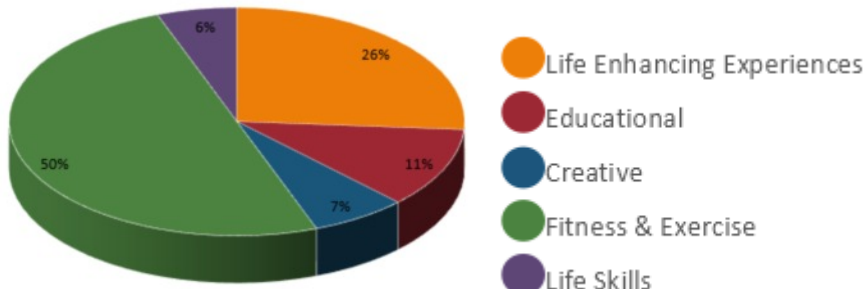


Fig 2



What People Say...

I love Grapevine so much; I see other members and my friends at Club and Dance. My favourite trip was Mrs Doubtfire in London.

Sam Medler



Ellen loves going on the trips and to Club where she can meet her friends, old and new.

Mary Schultz, Trustee (Ellen's mum)

Jill loves her Tuesday club night and enjoys all the Grapevine trips, especially those to see shows.

Cathy Knight

I have enjoyed going to Butlin's Bognor Regis this year and I enjoyed seeing Mrs Doubtfire. I have a great time with my friends and I love to be a member.

Betty Corrigan

My favourite trip was the greyhound dog racing.

Conor Hickey



My favourite trip was going to the Theatre to see Pinocchio. It reminded me of my childhood. I do love Grapevine Essex Dance Group with Jean Hunter because of the different routines to the music. It's always a new experience.

Hannah Pike



childhood. I do love Grapevine Essex Dance Group with Jean Hunter because of the different routines to the music. It's always a new experience.

I feel extremely privileged to be working for and supporting Grapevine. It provides fantastic social and community inclusion activities for adults with alternative needs plus excellent residential trips away. Members thrive in the fun and structured environment that Grapevine provides.

Simon Jones, Trustee

My daughter Joanne absolutely loves the Club nights where she gets the opportunity to socialise with friends and do some fun activities every week.

I love teaching the Grapevine Essex dance students as they are super dedicated, hard working and great fun!

Jean Hunter, Dance Tutor

I liked the walking tour in London and all the activities at Club. Grapevine is a friendly environment.

Ellen Schultz



I enjoyed seeing all my friends at all the trips.

Joshua Beaumont

Lee Gribble (Joanne's mum)



I enjoyed Wimple Hall and the Christmas party. I also enjoyed Mrs Doubtfire.

Andrew Brooks

I've loved being part of another successful year for Grapevine Essex. Most of all, the enjoyment on the members' faces is priceless and great reward for the hard work of the amazing staff and volunteers.

Jane Crossman, Trustee

Volunteering at Grapevine and being a Trustee is so rewarding. It's inspiring to see how the charity makes a real difference to members lives through delivering a much needed service within our community.

Emma Wyatt, Trustee



The Isle of Wight trip was really good, we shared rooms and could talk before going to sleep. I went on a speed boat and tried Paddle boarding, but fell off. There were lots of fish in the water. We played pool in the bar. We got Adrian wet and he fell in the water. YAY! Mrs Doubtfire was so funny, We all laughed a lot and enjoyed the show. We talked about it all the way home.

Danielle Kelly

The summer activities and residential were extremely good. Isle of Wight was

absolutely fantastic. The accommodation was clean and new, the food was good. There were many activities that were tried by many. Some people overcame their fears and were rightly very proud of themselves. Paul managed to paddle-board standing up and get back on by himself when he fell off. Tim tried many activities, and was very good at them, much to his own surprise.

I would like to thank the Grapevine organisers, staff and volunteers for this wonderful opportunity for the Grapevine members to experience new things and a chance to socialise in a safe and caring environment. It is such a relief as a parent to know that your child (even though they are an adult) is safe, happy and well looked after.

Monika Kelly, Trustee (Danielle's mum)

I have only attended a couple of Grapevine's events and the enjoyment they give is so evident. I'm proud to be part, however small, of such a lovely charity

Sue Johns, Trustee

I went with Josh to Wimpole Hall, it made my Christmas. During the summer I thoroughly enjoyed the trip to Leeds Castle.

Juliet Beaumont (Josh's mum)

I came on the trip to the Isle of Wight with my Aunt Sue. It was really nice to spend so much time with her. Everyone made me feel so welcome; it's such a beautiful



community and I had so much fun. I would definitely come on another trip.

Amber Martin-Smith (Sue's niece)

Fundraising Events

2024 was a successful year for Grapevine's fundraising efforts. The events were very well supported by members of the public and we made an overall profit of £6234. This figure also includes ticket sales from the Fawltly Towers Comedy Dinner which took place early in January 2025.

The first event was a drag night with the wonderful Ava Du Paris held at The Tulip Pub in Chelmsford on 21 June. Including a generous donation from Ava herself, we made a profit of £1267.

The Earls Colne Open Gardens event in June raised £122. Many thanks to Patricia Green for opening her garden to the public and providing cake, tea and bubbles.

On 26-28 July, our brave and intrepid Treasurer Monika Kelly completed the arduous 3 Peaks Challenge, raising an amazing £1029.

Bingo at Mace Playce held in Chelmsford in October raised £783.



Finally, the Quiz Night in November, hosted by Mark Holland at the Old Chelmsfordians' Club, raised £1053.

Throughout the year, we set up fundraising stalls at various events, held the annual Christmas raffle and utilised the Easy Fundraising app for online shopping, raising over £600 in total.

We welcome any more ideas you may have for fundraising events that you would like to hold on Grapevine's behalf. Please do get in touch via info@grapevineessex.org.uk



With special thanks to all our benefactors



Beaumont, Mrs. J.
Birt, Mrs. M.
Charities Aid Foundation
Chelmsford Newsagents - *patrons*
City Bowl - *patrons*
Coyne, Mr. R.
Crossman, Mrs. J.
Food and Drink Federation
Green, Mrs. P. (*Earls Colne Open Gardens*)
Harrington, Mr. T (*Memorial Donations*)
Hector, Mrs. B.
Hellier, Mrs. V.

Kelly, Mrs. M.
& 3 Peaks Challenge sponsors
King Charles Charitable Fund
Milz, Mrs. P.
Pike, Mr. A.
Roberts, Mrs. A.
Rotary Club, Chelmer Bridge
Six Bells Boreham Golf Society
Springfield Cricket Club customers
The Grand Charity
Vera Harrington Trust
Walter Farthing Trust
White Horse Quiz Night - *patrons*
Willy, Mr. G.

"I loved the residential trip to Gaveston Hall; we had loads of fun. It was a really cool place" Danielle Kelly, Member



Treasurer's Report



Charities with an annual income of less than £1million are not required to have their accounts audited but an Independent Examiner must inspect them.

Mr. Robert Andrews is registered with the Association of Charity Independent Examiners (ACIE) and has inspected the 2024 Annual Accounts. A report on his findings is provided on page 17.

Grapevine does not receive any government funding; our income is made up from fundraising, grants, donations and members' fees.

The principal on-going risk to the future of the charity is a reduction in the income required to pay the staff

that manage the charity and organise the events, which are enjoyed by the majority of our members.

At the end of 2024, Grapevine Essex was in a sound financial position. There is a bank balance of £23,345 and cash-in-hand of £153.

We were delighted to receive £14,358 grants and donations from various sources; these are listed as our Beneficiaries on page 15.

Gift Aid of £329 was recovered on donations for the 2023-2024 period. Some of the funding Grapevine has received has been carried over to 2025.

Fundraising activities raised a total of £6,234 (after costs). See page 14. We are very pleased that these events continue to be well supported in the local community.

Reserves Policy:

Grapevine Essex plans to retain a minimum of £7,000 as free reserves this year, representing the average expenditure for one series of events.

I shall be retiring from this position in 2025 and will hand everything over to Elizabeth Hendle as the new Treasurer.

Monika Kelly, Treasurer



Independent Examiner's Report

Independent Examiner's Report for the year ended 31 December 2024

I report on the accounts of Grapevine Essex charity no 1151261 which are set out on page 18

Respective responsibilities of trustees and examiner

The charity's trustees are responsible for the preparation of the accounts in accordance with the requirements of the Charities Act 2011 ("the Act").

The charity's trustees consider that an audit is not required for this year under section 144 of the Act and that an independent examination is needed.

It is my responsibility to:

- examine the accounts under section 145 of the Charities Act,
- to follow the applicable Directions given by the Charity Commission (under section 145(5)(b) of the Act, and
- to state whether particular matters have come to my attention

Basis of independent examiner's statement

My examination was carried out in accordance with general Directions given by the Charity Commission. An examination includes a review of the accounting records kept by the charity and a comparison of the accounts presented with those records. It also includes consideration of any unusual items or disclosures in the accounts, and seeking explanations from the trustees concerning any such matters. The procedures undertaken do not provide all the evidence that would be required in an audit, and consequently no opinion is given as to whether the accounts present a 'true and fair' view and the report is limited to those matters set out in the statement below.

Independent examiner's statement

In connection with my examination, no material matters have come to my attention which gives me cause to believe that, in any material respect:

- accounting records were not kept in accordance with section 130 of the Charities Act or
- the accounts do not accord with the accounting records

I have no concerns and have come across no other matters in connection with the examination to which attention should be drawn in order to enable a proper understanding of the accounts to be reached.



Robert Andrews MA, ACIB, FCIIE
3 Swards End, Wickford, SS12 9PB
10 July 2025

Relevant Professional Qualification:

Fellow of the Association of Charity Independent Examiners



Accounts for the Year 2024

Grapevine Essex Registered charity no: 1151261

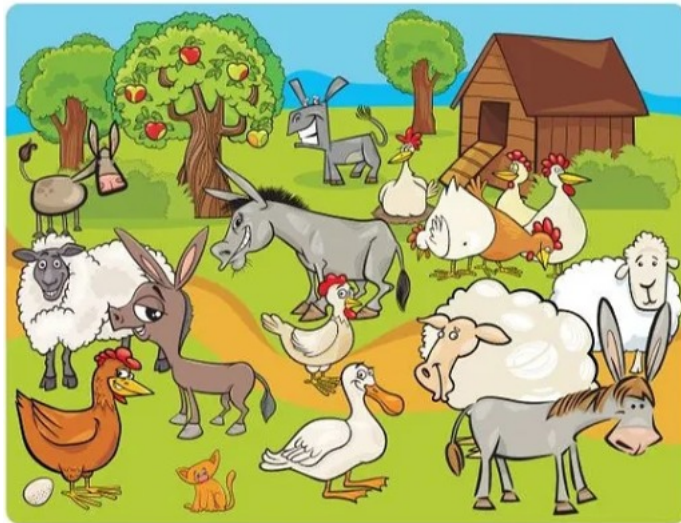
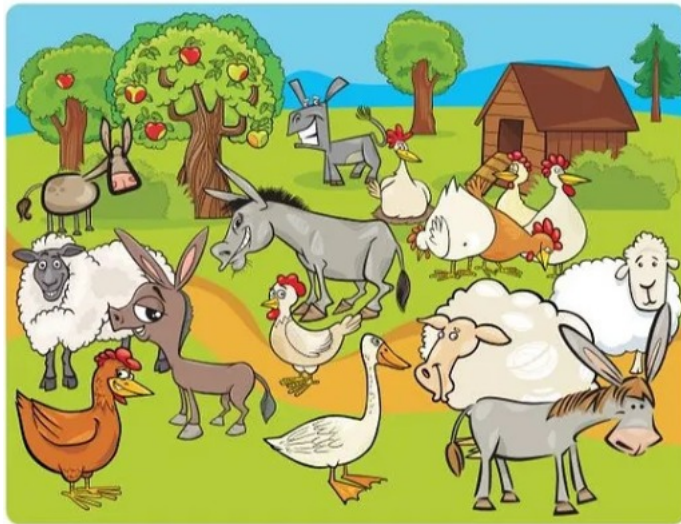
Receipts & Payments

For the year ended 31 December 2024

Receipts	2024 £	2023 £
Income from members		
Membership Fees	£ 1,843	£ 1,865
Activities		
Dance Group Fees	£ 5,853	£ 5,683
Club Grapevine Fees	£ 17,308	£ 12,042
Outings & Events	£ 42,703	£ 36,264
Transport contributions	£ 494	£ 693
Fundraising		
Fundraising events	£ 8,250	£ 3,666
Sale of merchandise	£ 267	£ 102
Grants & Donations	£ 14,358	£ 8,186
Gift Aid recovered on donations	£ 329	£ 568
Other income	£ 358	£ -
Total Receipts	£91,763	£ 69,070
Payments	2024	2023
Activities	£	£
Dance Group operating costs	£ 2,568	£ 2,886
Club Grapevine operating costs	£ 13,601	£ 7,715
Outings & Events	£ 34,194	£ 23,704
<i>Outings & Events Refunds</i>	£ 1,543	£ 393
Transport	£ 4,457	£ 4,438
Fundraising		
Fundraising events	£ 2,016	£ 1,015
Cost of merchandise	£ 397	£ 326
Staff and volunteers		
Salaries	£ 22,487	£ 22,830
Training	£ 1,696	£ -
Expenses reimbursed	£ 518	£ 314
Sundry staff & volunteer costs	£ 299	£ 292
Administration		
Stationery, website, postage, printing	£ 2,410	£ 1,807
Insurance	£ 786	£ 747
Equipment & supplies	£ 1,183	£ 393
Subscriptions	£ 85	£ 180
Bank charges & interest	£ 159	£ 187
Sundry expenditure	£ -	£ 127
Total payments	£ 88,399	£ 67,354
Surplus (deficit) for the year	£ 3,364	£ 1,716
Cash balances 1 January 2024	£ 19,147	£ 17,376
Adjustment from 2023	£ -	£ 55
Cash balances 31 December 2024	£ 22,511	£ 19,147
Statement of assets and liabilities		
Bank accounts	£ 23,345	£ 18,988
BMM Account	£ 4	£ -
Petty Cash	£ 67	£ 43
Club Grapevine petty cash	£ 36	£ 40
Grapevine Dance Group petty cash	£ 50	£ 50
Money owed to Grapevine Essex	£ 78	£ 376
Money owed by Grapevine Essex	-£ 1,069	-£ 350
	£ 22,511	£ 19,147

Spot the Difference

There are 10 differences between the pictures below - see if you can find them all.



Membership Application



Your details

Membership is available to anyone with a learning disability and aged 18 or over

Title (Mr, Mrs, Miss)	
Name	
Address	
Postcode	
Date of Birth	
Tel No	
Mobile No	
Email Address	
Diagnosis or brief description of disability	
Where did you hear about Grapevine Essex?	

Membership Fee

Annual Membership Fee: £15

Payment options:

Cheques/postal orders payable to Grapevine Essex

<https://www.paypal.com/paypalme/GRAPEVINEESSEX>

Or by bank transfer - please ask for bank details

Members have the opportunity to participate in approximately 35 specially organised and supported recreational and educational events per year at subsidised prices.

Members are also entitled to participate in the weekly term time groups:

*Grapevine Essex Dance Team** (Monday evenings at The Boswells School, Chelmsford) and *Club Grapevine** (Tuesday evenings at Moulsham School, Chelmsford).

*Weekly subscription fees apply

Please return this form with your payment to:

Grapevine Essex • c/o Tulip Hall • 31 Clacton Road • St Osyth • Essex • CO16 8PA
info@grapevineessex.org.uk • www.grapevineessex.org.uk



Friends of Grapevine Essex

Friends of Grapevine Essex membership is available to anyone who wishes to help support the valuable work of our charity. As a Friend of Grapevine Essex, you will be emailed regular updates on progress and events. If you do not wish to receive emails from us, please tick here ☐

www.grapevineessex.org.uk Registered Charity Number 1151261

Your details

Title (Mr, Mrs, Miss)	
Name	
Address	
Postcode	
Tel No / Mobile No	
Email Address	

Friends of Grapevine Essex Contribution (please specify chosen amount)

£10 ☐ £15 ☐ £20 ☐ Other amount £_____

giftaid it

Please treat as Gift Aid donations all qualifying gifts of money made

Today ☐ in the past 4 years ☐ in the future ☐

I confirm I have paid or will pay an amount of Income Tax and/or Capital Gains Tax for each tax year (6 April to 5 April) that is at least equal to the amount of tax that all the charities or CASCs that I donate to will reclaim on my gifts for that tax year. I understand that other taxes such as VAT and Council Tax do not qualify.

Signature _____

Date _____

Please return this form with your payment to:
Grapevine Essex • c/o Tulip Hall • 31 Clacton Road • St Osyth CO16 8PA

Charity Gift Aid Declaration - multiple donation

Boost your donation by 25p of Gift Aid for every £1 you donate

Gift Aid is reclaimed by the charity from the tax you pay for the current tax year. Your address is needed to identify you as a current UK taxpayer.

In order to Gift Aid your donation, you must tick the box below:

☐

I want to Gift Aid my donation of £.....and any donations I make in the future or have made in the past 4 years to:

Name of Charity: GRAPEVINE ESSEX

I am a UK tax payer and understand that if I pay less Income Tax and/or Capital Gains Tax than the amount claimed on all my donations in that tax year, it is my responsibility to pay any difference.

My Details

Title..... First name or initial(s).....

Surname.....

Home Address

.....

Postcode Date

Please notify the charity if you:

- want to cancel this declaration
- change your name or home address
- no longer pay sufficient tax on your income and/or capital gains

If you pay Income Tax at the higher or additional rate and want to receive the additional tax relief due to you, you must include all your Gift Aid donations on your Self Assessment tax return or ask HM Revenue and Customs to adjust your tax code.



Grapevine Essex

Registered address:
c/o Tulip Hall
31 Clacton Road
St Osyth, Essex
CO16 8PA

Registered Charity Number 1151261

www.grapevineessex.org.uk

www.facebook.com/GrapevineEssex

www.x.com/GrapevineEssex

www.instagram.com/grapevine_essex/



Jackie Holland, Charity Manager
Tel: 07933 631016 Email: Jackie@grapevineessex.org.uk

Vanessa Hellier, Member Support Manager
Tel: 07976 578868 Email: Vanessa@grapevineessex.org.uk



For people with learning disabilities