

# GRAPEVINE ESSEX

FOR PEOPLE WITH LEARNING DISABILITIES



## ANNUAL REPORT 2023



# Contents

<u>Our Purpose, our Values, our Services</u>	<u>4</u>
<u>Structure and Governance</u>	<u>5</u>
<u>We Listen, We Act, We Care</u>	<u>6</u>
<u>Chair's Annual Review</u>	<u>7</u>
<u>President's Report</u>	<u>8</u>
<u>Club Grapevine</u>	<u>9</u>
<u>Dance Group</u>	<u>10</u>
<u>Performance Overview</u>	<u>11</u>
<u>What People Say...</u>	<u>12</u>
<u>Our Benefactors</u>	<u>14</u>
<u>Treasurer's Report</u>	<u>15</u>
<u>Independent Examiner's Report</u>	<u>16</u>
<u>Accounts for the Year 2023</u>	<u>17</u>
<u>Spot the Difference</u>	<u>18</u>
<u>Membership Forms</u>	<u>19</u>
<u>Gift Aid Form</u>	<u>21</u>





***“We didn’t know we were making memories, we were just having fun” AA Milne***

## Mission Statement

**To make an impact on the lives of adults with learning disabilities by providing the necessary tools for change to enable them to lead active and purposeful lives.**

### Our purpose, our values, our services:

Grapevine Essex is committed to providing an excellent and professional service to adults with learning disabilities; comprising affordable, confidence building and educational opportunities that teach life skills, support independent living and improve employability.

The supported outings and activities provided ensure valuable

respite to parents and carers, in addition to raising acceptance and awareness of adults with learning difficulties within the general public.

Most of all, we are dedicated to ensuring our members have fun, develop friendships and enhance their lives within a safe, supportive and friendly environment.

# Structure and Governance

Grapevine Essex was founded in January 2012 and achieved charity status as a Charitable Incorporated Organisation in March 2013 with the registered Charity Number 1151261. Our governing document is the CIO Constitution, which was also agreed in 2013 and is reviewed on a regular basis.

In accordance with Charity Commission regulations, we have an elected Board of Trustees, who are responsible for the governance of the group. Charity trustees are elected on the basis of the relevant skills and attributes they possess that enable them to perform important functions within the charity. Trustees who were elected at the Annual General Meeting on 27 May 2023 are:

Mrs Jackie Holland	Chair
Mrs Monika Kelly	Treasurer
Mrs Emma Wyatt	Secretary
Mrs Jane Crossman	Trustee
Mr Adrian Heighes	Trustee
Mrs Vanessa Hellier	Trustee
Mrs Sue Johns	Trustee
Mr Simon Jones	Trustee
Mrs Mary Schultz	Trustee
Mr Peter Schultz	Trustee

Grapevine Essex was formed to meet the need locally for adults with learning disabilities to join a club where they can experience opportunities via our extensive activity programme that would not

otherwise be available to them. Grapevine provides over 40 outings and events during the Easter, Summer and Christmas holidays. These can include trips to historical venues, theme parks, theatres, outdoor activity centres, wildlife parks and residential mini-breaks to name just a few.

In term time, we hold two weekly evening clubs - a Dance Group, and Club Grapevine, which is a social club providing organised activities. Both are very well attended.

Adults with learning disabilities can lead sedentary and sheltered lives and are at a particular disadvantage in our society with relation to involvement in leisure and social activities. This may be due to communication difficulties, a lack of confidence, qualified help and support or financial restrictions. People who are intellectually disadvantaged can be socially marginalised and isolated. Some of our members live in segregated settings, with few, if any, social relationships within the wider community.

Belonging to Grapevine Essex helps to motivate our members and improve their quality of life by providing exciting opportunities to get involved with, alongside some regular and familiar activities too. Members form relationships and make friends; and belonging to the 'Grapevine Family' becomes an important part of their lives.





# We Listen, We Act, We Care



Jackie Holland & Vanessa Helliier

Grapevine Essex was founded in January 2012 by Jackie Holland and Vanessa Helliier and we have over 150 members. We are honoured to have Peter Turrall MBE as our President, and Lord Petre, 18th Baron Petre KCVO as our Patron.

Jackie's role as Chair of the Board of Trustees and Charity Manager includes planning and organising all the activities and events for members, managing the accounts and overseeing the general running of the charity. Jackie holds qualifications in Emergency First Aid at Work; Risk Assessment and Safeguarding Vulnerable Adults, level 3 (Higher Distinction). Jackie manages the charity from her home in St Osyth.



Mary Schultz

Vanessa's role as Member Support Manager involves organising the support for members and supervising the volunteer team. She also runs our two weekly clubs during term times: Club Grapevine and the Dance Group. Vanessa holds qualifications in First Aid at Work; Risk Assessment; Safeguarding Vulnerable Adults, level 3 (Higher Distinction); Epilepsy Awareness; Autism Awareness and is qualified to administer Buccal Midazolam.



Adrian Heighes

Adults, level 3 (Higher Distinction) and Autism Awareness.

Adrian Heighes is a Support Assistant for people with complex needs. He is currently studying for a BSc Hons in Health and Social Care and holds the following qualifications: QCF/NVQ Level Two: Health & Social Care; NVQ Level Three: Employment Law; Understanding Autism, Fire Safety, Health & Safety, Nutrition & Wellbeing, Infection Control & Prevention, Safeguarding Vulnerable Adults, level 3 (Higher Distinction); Dementia Awareness, Makaton, The Autism Act 2009, Manual Handling; First Aid at Work and is qualified to administer Buccal Midazolam.

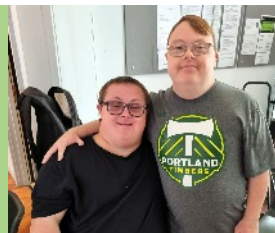
Simon Jones is a qualified SEN teacher and actively works teaching adults with alternative needs across a broad spectrum at a local Essex College. He holds the following qualifications, DETS / LV5 (teaching diploma), HND in Early Childhood studies and BTEC Level 3 Social Care. Simon has been working within the SEN sector for over fifteen years and is an experienced behaviour support manager, personal assistant, classroom assistant and manager and qualified teacher. In a nutshell, Simon loves his job!



Simon Jones

Mary Schultz works alongside Vanessa in providing support for members and also organises the Art and Craft Workshops. Mary holds qualifications in Emergency First Aid At Work; Risk Assessment; Safeguarding Vulnerable

Other support staff and volunteers are offered 'Emergency First Aid at Work' training. All members of the Grapevine Team have Disclosure and Barring Service (DBS) clearance where required.



# Chair's Annual Review 2023



I do love living in the beautiful village of St Osyth, where I work from home to manage

Grapevine Essex 2 days a week. Sadly, I'm not able to join as many events as before, as it's just too far to come to Chelmsford regularly but I really enjoy it when I do see everyone. It's brilliant when you come here too, last summer we had a day out at Clacton Pier and another day at The Curve Water Park followed by a pub lunch. In December we were lucky enough to visit the medieval St Osyth Priory for an educational guided event just for our group.

My favourite trips are always the residentials, which we are hoping to do more of in the future. Last year our Spring trip was to Gaveston Hall in Sussex, where we included visits to Arundel Castle and Brighton. In the summer, we returned to Bowles Rocks in Kent for rock climbing and canoeing. Everyone has so much fun and we made some wonderful memories.

Due to the huge increase in coach costs and money being very tight for the first half of the year, we had no choice but to use the minibuses more and more.

Thankfully, we did receive some generous funding later in the year which got us back on track. We hope to have more of a balance of coaches vs minibuses in the future - and we will always use a coach for London trips.

We are extremely grateful to all our supporters who have provided us with grants, donations and attended fundraising events. Grapevine would not exist without its many generous benefactors (see page 14).

**Jackie Holland**  
**Chair & Charity Manager**



**"I love going to Grapevine, they have fun filled activities and day trips to go on.  
The day trips are amazing" Grace Wiley**



# President's Report



joining our well run organisation and also some of the events they attend. All in all I can honestly say we are so fortunate to have an excellent Chairman and Committee to organise all these super events for our Members.

Once again it is my pleasure to put pen to paper and comment how all our friends in Grapevine Essex have enjoyed so many well organised events throughout the last year.

Unfortunately I regret I have been unable to participate in any of them but my thoughts are always with our Members as they enjoy all that is put before them.

Through my Grandson Thomas I hear about new people

I hope all of you have a great Summer. Remember to enjoy yourselves and keep safe in any of the activities you undertake.

With very best wishes for the coming year.

**Peter A.T.  
Turrall MBE  
President**



**"The level of commitment extended by staff to help enrich and fulfil the lives of these individuals is totally amazing. I'm in awe!"**

**Debbie Martin-Smith (Sue Adams' sister)**



# Club Grapevine



Tuesdays 6:30pm-8:30pm, term time only  
Moulsham School, Brian Close, Chelmsford CM2 9ES  
Contact: [Vanessa@grapevineessex.org.uk](mailto:Vanessa@grapevineessex.org.uk) / 07976 578868

I would like to show my appreciation to all the Club Grapevine volunteers and staff: Jane, Sarah B, Adrian, Sarah W, Grace, Emma, Mary and Simon for all their support and help. I would also like to thank Mary for organising and preparing the arts and crafts evenings and Eileen and Cathy for assisting on the night. Thanks to Tom for taking on our quiz nights and preparing the questions each time. Thanks to DJ JoJo, Jan and Denis for doing the discos. A big, big thank you to all the carers that bring the members to club and help us out.

I'd like to thank all the members that are able to pay up front for the activities, as this makes it much easier for us in collecting fees.

Club Grapevine continues to carry on growing with new members each year. We now have an average of 60-65 members most weeks. Bowling and Disco will always be the most popular activities. We are so glad that City Bowl in Chelmsford is now up and running again.

I hope everyone enjoys all the club nights and if you have any suggestions for other activities we can offer on a Tuesday evening, then please let me know.

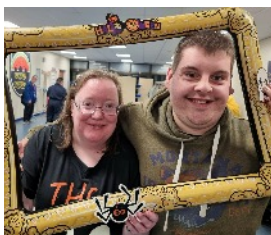


In memory of Colin Gooday who was a very big part of Club Grapevine and Grapevine Essex, we decided to award a kindness award each year to someone who we thought deserved it. So, this year the Colin Gooday Kindness Award was presented to Grace Walker our youngest member of the volunteer team for all the help she gives to members each week.



In memory of Ian Roberts who was a member of Grapevine Essex we decided to present an art and craft award, as Ian really enjoyed joining in with this activity. So, in memory of Ian Roberts the Art and Craft Award this year goes to Ellen Schultz for her achievements. Well done, Ellen.

**Vanessa Hellier, Club Grapevine Manager**





# Dance Group

Mondays 7:00pm-8:00pm, term time only  
The Boswells School, Burnham Road, Chelmsford CM1 6LY  
Contact: Vanessa Hellier - [Vanessa@grapevineessex.org.uk](mailto:Vanessa@grapevineessex.org.uk) / 07976 578868



Where does the time go..?

I would like to give a big thank you to Jean Hunter for teaching the classes and coming up with new dances when needed. I would like to thank our volunteer team Lynn, Lesley, Gail and Katherine for coming every week.

This year, The Katie Whalley Dance Achievement Award was presented to Anna Morgan for the help she gives to other members at the dance classes. Well done, Anna!

We are hoping that next year our dancers will be appearing at more public performances to showcase our Dance Group.

I am pleased that 75% of our members are paying in advance for the whole term, as it makes so much easier when collecting fees.

**Vanessa Hellier, Dance Group Manager**

I am the dance tutor and choreographer for the Dance Group. We meet on Monday evenings at the Boswells School who kindly let us use their dance studio.

We have been together for 29 years now and we continue to thrive as a large boisterous group with a few new members, and the huge help and organisation from Vanessa and our devoted Volunteers.

Our brilliant Dancers performed at four public events in 2023: Boswells Community Dance School Show in April; Columbus College summer fair in June; Chelmsford Carnival in July and the Boswells Show in July.

We are very lucky to have the continuing backing and support of Paul Butler and his staff and pupils, who supply the lighting and music for every show and help to make our performances go smoothly.

**Jean Hunter, Dance Tutor**

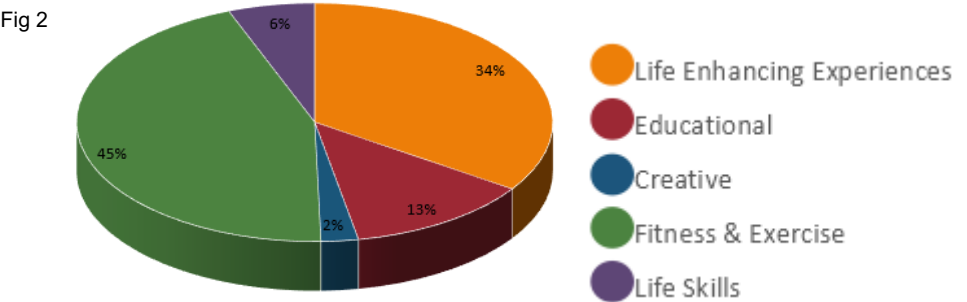
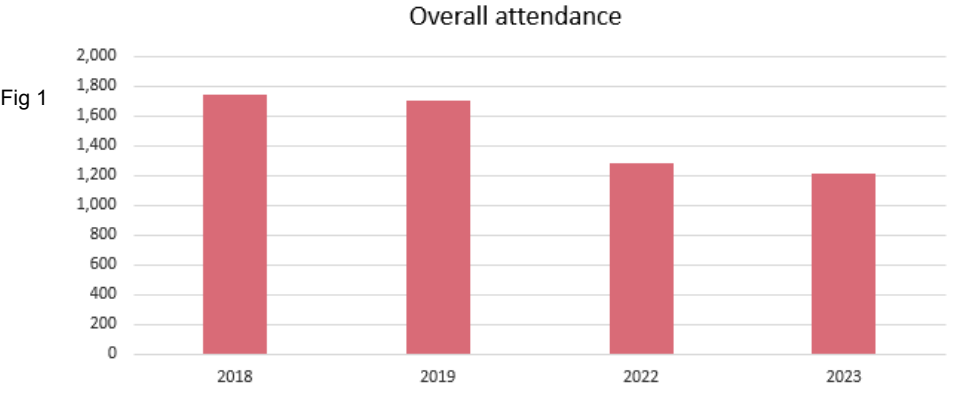
# Performance Overview 2023

Grapevine Essex provides educational and recreational activities for adults with learning disabilities living in Essex. Our priority is to support our members' mental well-being by widening their social circle and increasing their confidence with fun-filled activities. This results in members feeling valued, able to contribute meaningfully to society and live more fulfilled lives.

Comparing our attendance figures with pre-pandemic levels show we are still playing catch-up (see Fig.1). We have put this down to a change of habits for members, together with the huge impact of the cost of living crisis. Funding has also been more difficult to come by, meaning

that costs for activities have had to increase. However, we are adept at cutting our cloth to fit the budget, so were still able to offer 36 outings and events over the year including two short-breaks away. Regrettably the increase in fuel costs has meant fewer London trips and West End shows.

A review of the type of events offered shows the varied split of activities available:  
Life Enhancing - e.g. theatres, restaurants  
Educational - e.g. historic venues  
Creative - e.g. art and craft  
Fitness and Exercise - e.g. dance, swimming  
Life Skills - e.g. cooking and residentials (see Fig.2).



# What People Say...



I love going to Grapevine Club, they have fun filled activities and day trips to go on. The day trips are amazing. A day trip I went on in the Easter break was pottery painting at Barleylands, I really enjoyed this activity. I

joined the residential stay at Gaveston Hall and I loved the steam train ride at Bluebell Railway.

**Grace Wiley**

I really enjoyed the City of London walking tour, East Anglian Railway, Southend Sealife Adventure; Chislehurst Caves; Bowles Rocks, fishing, river trip and the Curve aqua park. I'm happy being a member, I feel that I'm looked after well and my confidence has grown. I am looking forward to the next lot of outings and activities. I'm hoping to come to the Isle of Wight in the summer and I'm looking forward to the Stansted raceway and especially Butlins in February 2025. It would be lovely to have these kinds of holidays in the near future.

**Mark Morrison**

Lianne looks forward to seeing everyone on the trips, she love the theatre and going to new places. Lianne also has enjoyed going to Club Grapevine; without these activities, she would be very bored. She is looking forward to seeing Mrs Doubtfire and enjoying some more activities this year. Thanks to all the staff and volunteers for all they do for the members.

**Clare Nice (Lianne's mum)**



Over Summer, I enjoyed going to Clacton Pier & Jurassic Experience because I am very interested in Dinosaurs and at Xmas I loved going to Theatre productions, seeing Peter Pan and The Wizard of Oz. Really love the Grapevine trips, thank you Jackie and Vanessa and all the other Staff.

**Ellen Schultz**



I really enjoyed Conjuring at the Court and Go Ape and can't wait for the Isle of Wight and hopefully the Curve Sports in St Osyth because that's always been very popular.



Thanks again Jackie and Vanessa and all the team for the wonderful trips.

**Andrew Brooks**

Another great selection of Grapevine trips, going to some historical places and revisiting some firm favourites. Over Summer last year, we had 17 trips, all brilliant in their own way but my favourites were the residential at Bowles Rock where people overcame fears and were brave to try out new things. Also Fishing at Puddledock Farm for a relaxing morning and afternoon; Theatre performances of Billy Joel Collection and Back into Hell and Audley End, steeped in History. At Xmas, St Osyth Priory and The Wizard of Oz at Cliffs Pavillion were definitely my favourites. At the Priory, we went on a tractor ride around the grounds and saw

some white deer, learnt a lot of history and it was amazing to see the wall graffiti in the Abbot's Tower going back many years. We even made some medieval medicines with herbs from their Physic garden. It is lovely to see that they are restoring many parts of the Priory.

**Mary Schultz (Trustee)**

My favourite trip so far is Conjuring at the Court, it was a fabulous show and I enjoyed it.

**Conor Hickey**



I am pleased to offer my continued support to the future of Grapevine Essex. It's lovely to see the enjoyment on everyone's faces as they join in with all the activities. The staff and volunteers are marvellous, working hard to ensure the success of everything that they do.

**Jane Crossman (Trustee)**



Louan is talking about the summer trips already, he absolutely loves Grapevine!

**David Moore (Louan Elsdon's carer)**

Jessica feels very well looked after. She has been reunited with many of the people she attended school and College with. Without Club Grapevine she would not be able to socialise with them.

She is working on her confidence; with each attendance I feel her confidence growing (i.e. she will now ask to be dropped off and is willing to walk in alone) She is only able to attend Tuesday evenings on a regular basis, with the odd trip during the

holidays; the trips that she has attended have been thoroughly enjoyed. Jessica is not a dancer, but she does enjoy watching her peers enjoying themselves.



**Michele**

**Sullivan (Jessica's mum)**

My sister, Suzanne Adams has been a member of Grapevine for a number of years and I know how much Sue gets from all the events she attends. The staff at Grapevine, (without exception) have provided not just Sue, but myself with support that goes above and beyond what would be expected.

I attended the most recent overnight stay at Gaveston Hall, to support Sue with her personal care. I didn't expect to have such a fun time with a group of adults with a diverse range of disabilities. All members are treated with the utmost respect and I honestly had the best time.... Such a great bunch of people. I learnt so much from so many and it gave me a real insight into the importance of Grapevine's existence. I strongly believe that without Grapevine, members would miss out opportunities to "get out there and be themselves". I am looking forward to supporting Sue on the Isle of Wight trip.....I'll remember my earplugs this time. The level of commitment extended by staff to help enrich and fulfil the lives of these individuals is totally amazing. I'm in awe! Thank you for everything you do.

**Debbie Martin-Smith (Sue Adam's sister)**





# With special thanks to all our benefactors



Amazon Fundraising

Beaumont, Mrs. J.

Chelmer Bridge Rotary

Chelmsford Lions

Chelmsford Newsagents'

Customers

Corrigan, Mr. J.

Easy Fundraising

Endeavour customers, Chelmsford

Essex Association of Local

Councils

Essex Community Foundation

Greig, Mr. J

Hector, Mrs. B.

Hellier, Mrs. V.

Holland, Mrs. C.M.

Holland, Mrs. J.A.

John Lewis, Chelmsford

Lodge of Integrity

Magic Little Grant (Local Giving)

Monk-Smith, Mrs. A.

Old Chelmsfordian Lodge

Paypal Giving Fund

Provincial Grand Conclave of  
Essex

Red Lion customers, St Osyth

Rivermead Rotary Club

Schultz, Mrs. M.

St Cedd Chapter Rose Croix 287

Turrall, Mr. P.

Zwink, Mrs. L.

**"I absolutely love volunteering for Grapevine and find it  
incredibly rewarding" Emma Wyatt, Trustee**

# Treasurer's Report



Charities with an annual income of less than £1million are not required to have their accounts audited but must be inspected by an Independent Examiner.

Mr. Robert Andrews is registered with the Association of Charity Independent Examiners (ACIE) and has inspected the Annual Accounts. A report on his findings is provided on page 16.

Grapevine is not in receipt of any government funding; the income is composed of fundraising, grants, donations and members' fees.

The principal on-going risk to the future of the charity is a reduction in the income required to pay the staff that manage the charity and organise the events, as well as the rising energy and cost of living

increases, which affect transport costs and entrance fees.

At the end of 2023, Grapevine Essex is in a sound financial position. There is a bank balance of £18,988 and cash-in-hand of £133.

We were delighted to receive grants and donations of £8,186, the Benefactors are listed on Page 14. Gift Aid of £568 was recovered on donations received in the 2022-2023 period.

Our fundraising activities - namely the Barn Dance, Charity Bingo, a Fashion

Show and the Quiz Night raised a total of £2652 after costs. We are very pleased that these events continue to be well supported in the local community. If you would like to discuss any potential grants or donations, fundraising or sponsorship opportunities, please get in touch.



**Reserves Policy:** Grapevine Essex plans to retain a minimum of £7,000 as free reserves, representing the average expenditure for one series of events.

**Monika Kelly, Treasurer**



# Independent Examiner's Report

## Independent Examiner's Report for the year ended 31 December 2023

I report on the accounts of Grapevine Essex charity no 1151261 which are set out on page 17

### Respective responsibilities of trustees and examiner

The charity's trustees are responsible for the preparation of the accounts in accordance with the requirements of the Charities Act 2011 ("the Act").

The charity's trustees consider that an audit is not required for this year under section 144 of the Act and that an independent examination is needed.

It is my responsibility to:

- examine the accounts under section 145 of the Charities Act,
- to follow the applicable Directions given by the Charity Commission (under section 145(5)(b) of the Act, and
- to state whether particular matters have come to my attention

### Basis of independent examiner's statement

My examination was carried out in accordance with general Directions given by the Charity Commission. An examination includes a review of the accounting records kept by the charity and a comparison of the accounts presented with those records. It also includes consideration of any unusual items or disclosures in the accounts, and seeking explanations from the trustees concerning any such matters. The procedures undertaken do not provide all the evidence that would be required in an audit, and consequently no opinion is given as to whether the accounts present a 'true and fair' view and the report is limited to those matters set out in the statement below.

### Independent examiner's statement

In connection with my examination, no material matters have come to my attention which gives me cause to believe that, in any material respect:

- accounting records were not kept in accordance with section 130 of the Charities Act or
- the accounts do not accord with the accounting records

I have no concerns and have come across no other matters in connection with the examination to which attention should be drawn in order to enable a proper understanding of the accounts to be reached.



Robert Andrews MA, ACIS, FCIE  
3 Swards End, Wickford, SS12 9PB  
1 June 2024

### Relevant Professional Qualification:

Fellow of the Association of Charity Independent Examiners



# Accounts for the Year 2023

## Grapevine Essex Registered charity no: 1151261

### Receipts & Payments

For the year ended 31 December 2023

Receipts	2023 £	2022 £
<b>Income from members</b>		
Membership Fees	£ 1,865	£ 1,570
<b>Activities</b>		
Dance Group Fees	£ 5,683	£ 5,179
Club Grapevine Fees	£ 12,042	£ 11,362
Outings & Events	£ 36,264	£ 40,776
Transport contributions	£ 693	£ 414
<b>Fundraising</b>		
Fundraising events	£ 3,666	£ 3,881
Sale of merchandise	£ 102	£ 362
Grants & Donations	£ 8,186	£ 9,960
Gift Aid recovered on donations	£ 568	£ 421
Other income	£ -	£ 95
<b>Total Receipts</b>	<b>£ 69,070</b>	<b>£ 74,020</b>

### Payments

<b>Activities</b>		
Dance Group operating costs	£ 2,887	£ 3,055
Club Grapevine operating costs	£ 7,715	£ 6,557
<i>Club Refunds</i>		£ 75
Outings & Events	£ 23,753	£ 34,508
<i>Outings &amp; Events Refunds</i>	£ 393	£ 625
Transport	£ 4,438	£ 10,012
<b>Fundraising</b>		
Fundraising events	£ 1,015	£ 1,178
Cost of merchandise	£ 326	£ 813
<b>Staff and volunteers</b>		
Salaries	£ 23,017	£ 17,377
Training	£ -	£ 1,196
Expenses reimbursed	£ 314	£ 386
Sundry staff & volunteer costs	£ 127	£ 148
<b>Administration</b>		
Stationery, website, postage, printing	£ 1,619	£ 2,606
Insurance	£ 747	£ 742
Equipment & supplies	£ 393	£ 199
Subscriptions	£ 180	£ 96
Bank charges & interest	£ 187	£ 224
Sundry expenditure	£ 127	£ 326
<b>Total payments</b>	<b>£ 67,237</b>	<b>£ 80,123</b>
<b>Surplus (deficit) for the year</b>	<b>£ 1,833</b>	<b>-£ 6,103</b>
Cash balances 1 January 2022	£ 17,376	£ 23,479
<b>Cash balances 31 December 2022</b>	<b>£ 19,033</b>	<b>£ 17,376</b>

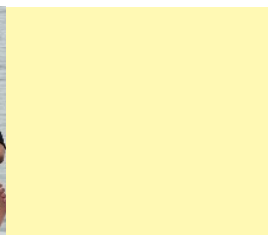
### Statement of assets and liabilities

Bank account	£ 18,988	£ 19,407
Petty Cash	£ 43	£ 50
Club Grapevine petty cash	£ 40	£ 40
Grapevine Dance Group petty cash	£ 50	£ 50
Money owed to Grapevine Essex	£ 233	£ 540
Money owed by Grapevine Essex	-£ 321	-£ 2,711
	<b>£ 19,033</b>	<b>£ 17,376</b>



# Spot the Difference

There are 7 differences between the pictures below - see if you can find them all.



# Membership Application



## Your details

Membership is available to anyone with a learning disability and aged 18 or over

Title (Mr, Mrs, Miss)	
Name	
Address	
Postcode	
Date of Birth	
Tel No	
Mobile No	
Email Address	
Diagnosis or brief description of disability	
Where did you hear about Grapevine Essex?	

## Membership Fee

Annual Membership Fee: £15

### *Payment options:*

*Cheques/postal orders payable to Grapevine Essex*

<https://www.paypal.com/paypalme/GRAPEVINEESSEX>

*Or by bank transfer - please ask for bank details*

Members have the opportunity to participate in approximately 35 specially organised and supported recreational and educational events per year at subsidised prices.

Members are also entitled to participate in the weekly term time groups:

*Grapevine Essex Dance Team\** (Monday evenings at The Boswells School, Chelmsford) and *Club Grapevine\** (Tuesday evenings at Moulsham School, Chelmsford).

\*Weekly subscription fees apply

Please return this form with your payment to:

Grapevine Essex • c/o Tulip Hall • 31 Clacton Road • St Osyth • Essex • CO16 8PA  
[info@grapevineessex.org.uk](mailto:info@grapevineessex.org.uk) • [www.grapevineessex.org.uk](http://www.grapevineessex.org.uk)



## Friends of Grapevine Essex

Friends of Grapevine Essex membership is available to anyone who wishes to help support the valuable work of our charity. As a Friend of Grapevine Essex, you will be emailed regular updates on progress and events. If you do not wish to receive emails from us, please tick here ☐

[www.grapevineessex.org.uk](http://www.grapevineessex.org.uk) Registered Charity Number 1151261

### Your details

Title (Mr, Mrs, Miss)	
Name	
Address	
Postcode	
Tel No / Mobile No	
Email Address	

### Friends of Grapevine Essex Contribution (please specify chosen amount)

£10 ☐      £15 ☐      £20 ☐      Other amount £\_\_\_\_\_

*giftaid it*

Please treat as Gift Aid donations all qualifying gifts of money made

Today ☐    in the past 4 years ☐    in the future ☐

I confirm I have paid or will pay an amount of Income Tax and/or Capital Gains Tax for each tax year (6 April to 5 April) that is at least equal to the amount of tax that all the charities or CASCs that I donate to will reclaim on my gifts for that tax year. I understand that other taxes such as VAT and Council Tax do not qualify.

Signature \_\_\_\_\_

Date \_\_\_\_\_

Please return this form with your payment to:  
Grapevine Essex • c/o Tulip Hall • 31 Clacton Road • St Osyth CO16 8PA

## Charity Gift Aid Declaration - multiple donation

**Boost your donation by 25p of Gift Aid for every £1 you donate**

Gift Aid is reclaimed by the charity from the tax you pay for the current tax year. Your address is needed to identify you as a current UK taxpayer.

**In order to Gift Aid your donation, you must tick the box below:**

☐

I want to Gift Aid my donation of £.....and any donations I make in the future or have made in the past 4 years to:

**Name of Charity: GRAPEVINE ESSEX**

I am a UK tax payer and understand that if I pay less Income Tax and/or Capital Gains Tax than the amount claimed on all my donations in that tax year, it is my responsibility to pay any difference.

### My Details

Title..... First name or initial(s).....

Surname.....

Home Address .....

.....

Postcode ..... Date .....

### Please notify the charity if you:

- want to cancel this declaration
- change your name or home address
- no longer pay sufficient tax on your income and/or capital gains

If you pay Income Tax at the higher or additional rate and want to receive the additional tax relief due to you, you must include all your Gift Aid donations on your Self Assessment tax return or ask HM Revenue and Customs to adjust your tax code.





## Grapevine Essex

Registered address:  
c/o Tulip Hall  
31 Clacton Road  
St Osyth  
Essex  
CO16 8PA

Registered Charity Number 1151261



[www.grapevineessex.org.uk](http://www.grapevineessex.org.uk)  
[www.facebook.com/GrapevineEssex](https://www.facebook.com/GrapevineEssex)  
[www.twitter.com/GrapevineEssex](https://www.twitter.com/GrapevineEssex)  
[www.instagram.com/grapevine\\_essex/](https://www.instagram.com/grapevine_essex/)

Jackie Holland, Chair & Charity Manager  
Tel: 07933 631016 Email: [Jackie@grapevineessex.org.uk](mailto:Jackie@grapevineessex.org.uk)

