

# INCREDIBLE KIDS

England & Wales · Charity number 1151185

## Details

---

**Status** Registered

**Legal form** CIO

**Registered** 2013-03-11

**Register** [View on the Charity Commission register](#)

## Contact

---

**Address** Lockleaze Youth & Play Space  
Romney Avenue  
Bristol  
BS7 9TD

**Phone** 07766252320

**Email** [incrediblekidsuk@gmail.com](mailto:incrediblekidsuk@gmail.com)

**Website** [www.incrediblekids.org.uk/](http://www.incrediblekids.org.uk/)

## Activities

---

**Objects:** 1. THE RELIEF OF CHILDREN WITH ADDITIONAL NEEDS; AND2. PROVIDING RELIEF AND RESPITE TO THE FAMILY AND CARERS OF THE CHILDREN;THESE OBJECTS SHALL BE FURTHERED IN PARTICULAR BUT NOT EXCLUSIVELY BY:A) PROVIDING CARE FOR THE CHILDREN AND PROVIDING OPPORTUNITIES FOR THEM TO SOCIALISE AND PLAY TOGETHER; ANDB) ALLOWING PARENTS AND CARERS TO TAKE A SHORT BREAK FROM THE PRESSURES OF EVERYDAY LIFE AND ENCOURAGING A MUTUALLY SUPPORTIVE ENVIRONMENT FOR PARENTS AND CARERS.WE DEFINE THOSE WITH ADDITIONAL NEEDS AS CHILDREN AND YOUNG PEOPLE WHO HAVE A PHYSICAL, SENSORY, COMMUNICATION, BEHAVIOURAL OR LEARNING DIFFICULTY, OR HAVE A LONG TERM/LIFE LIMITING CONDITION

**Activities:** Incredible Kids provides play and support to any family with a child or young person with a disability or additional need to strengthen family life and reduce inequality and social isolation. We run supported family play sessions for children with additional needs and their siblings, with advice and support for parents. The charity is Christian-led and open to all.

## Classification

---

- **How:** Provides Services, Provides Advocacy/advice/information
- **What:** General Charitable Purposes, Disability, The Prevention Or Relief Of Poverty, Recreation
- **Who:** Children/young People, People With Disabilities, Other Defined Groups, The General Public/mankind

## Geography

---

- Bristol City
- South Gloucestershire

## Finances

---

Period end	Income	Expenditure	Assets	Employees
2025-03-31	£139,666	£129,238	-	-
2024-03-31	£118,560	£118,907	-	-
2023-03-31	£109,702	£117,367	-	-
2022-03-31	£393,793	£85,412	-	-
2021-03-31	£68,201	£63,217	-	-

## Trustees

---

Name	Role	Appointed
JENNIFER MAY PREWETT CPFA	Chair	2013-02-14
Dominic Fletcher		2021-07-29
Dr Chizoba Elizabeth Peters		2025-09-18
Mariia Dolbunova		2025-09-18

**INCREDIBLE KIDS**

England & Wales - Charity number 1151185

---

# Accounts

---

# Incredible Kids 2024 2025



Registered charity 1151185

▶ [incrediblekids.org.uk](https://incrediblekids.org.uk)



Inclusive play ● Family support ● Improving wellbeing

Providing play opportunities and a support network to young people with additional needs and their families



## A note from our Trustees

I am pleased to introduce this Trustee's Statement for Incredible Kids for the year 2024–2025. This has been a difficult year for many families, as well as for small charities like ours. The cost of living has continued to rise, demand for our support has increased, and securing funding has become more challenging.

Incredible Kids is here to support families who have a child or young person with additional needs. We support the whole family, not just the child. Many families come to us very early on, sometimes before any other services are involved. This is often a time when families feel worried, isolated and unsure where to turn. Our role is to offer early support, help families understand what is available to them, and make sure parents, siblings and children all feel welcomed and supported.

Although there are now more services available in Bristol than when Incredible Kids first began fourteen years ago, families still tell us that the right kind of support can be hard to find. Services are often overstretched and not always set up to meet the needs of the whole family. At Incredible Kids, we work differently. Families do not need a diagnosis to attend, siblings are always welcome, and children are not expected to separate from their parents or carers. We take time to get to know each family and respond to what they need.

During 2024–2025, Incredible Kids supported 2,906 family attendances across Bristol, with sessions taking place in Lockleaze, Filton and Cribbs Causeway. On average, 267 families attended our sessions each month. Many families travel long distances and attend regularly, often every week. This shows both how much our support is needed and how much families trust us.

We delivered our regular Friday and Saturday sessions throughout the year, alongside quieter sessions, Food Fridays, sessions in Filton introduced following family feedback, and the Incredible Girls group for disabled girls and young women. As the year went on and living costs continued to rise, providing food and warm spaces became increasingly important. When funding allowed, we offered hot meals, food parcels and supermarket vouchers so families could spend time together without extra pressure.



**Incredible Kids provides a lifeline for young people and their families in Bristol.**

The trustees are proud of what was delivered during a very challenging year. We continued to listen to families and adapt our sessions to meet changing needs, including creating specialist groups where there were few or no alternatives locally. Our playworkers supported children to play, try new things and build friendships, while parents were able to talk to others who understood their experiences and receive practical information and reassurance.

Families regularly tell us about the difference Incredible Kids makes. Many say they feel less isolated, that their children are happier and more confident, and that Incredible Kids is one of the few places where they feel accepted. One parent shared that when their child was struggling, other parents offered kindness rather than judgement, saying it was the first time they had truly felt safe and understood. The year was not without its challenges. Rising costs for venues, food and staffing, alongside short-term funding, made planning difficult. Trustees had to make careful decisions to keep sessions affordable for families while also covering the real costs of delivering safe and reliable support. Throughout the year, trustees worked closely with staff to monitor finances, manage risks and make sure the charity remained stable.

The trustee board continued to support staff and volunteers during a demanding year. Safeguarding and financial oversight remained a priority, and we continued to improve how we collect feedback and measure the difference our work makes. Trustees were also mindful of the pressures faced by staff and volunteers and worked to ensure they felt supported.



Incredible Kids would not exist without the commitment of our staff, volunteers, families and supporters. Families themselves play a key role by fundraising, donating items, volunteering their time and supporting our work in practical ways. At a time when funding is uncertain, this support is more important than ever.

As we look ahead to 2025–2026, trustees remain concerned about ongoing funding pressures and the difficulty of relying on short-term grants. At the same time, we are hopeful. Families continue to tell us how important Incredible Kids is to them, and the level of need we see each week confirms the value of our work. Our priorities for the coming year are to improve financial stability, secure suitable premises, and continue providing consistent, high-quality support while responding to what families need.

We hope families felt welcomed, supported and understood during the year, and that funders can see the difference their support makes. Trustees remain committed to keeping Incredible Kids inclusive, respectful and family-centred. We warmly invite supporters, funders and anyone considering becoming a trustee to be part of our future.

Jennie Prewett,  
Chair of Trustees  
Incredible Kids

**Incredible Kids transforms the lives of families with children and young people who have additional needs through Incredible Play and Support.**





“Incredible kids gives my daughters a space in which they can be themselves. They get to experience new activities and meet new people which helps them with social situations in their everyday lives.”



## What we do

### We provide a service where...

- children and young people with disabilities **engage in play** with their parents and carers
- **siblings** of children with additional needs have a space to play and be valued in their own right
- children have access to **specialist equipment** and toys
- **parents and carers access support** and signposting
- parents and children have the opportunity for ownership through **volunteering** and participation
- families become part of a **mutually supportive community**

### How we work

- We are a **grassroots charity** where our families are at our core
- We respond quickly to **change**
- We **understand our families'** needs
- Work in **highly creative** ways to support families
- We test new projects and ideas our members or staff suggest
- Work with a **multi-agency approach** to provide bespoke support to families
- We make a difference to members' lives by creating a **mutually supportive environment**
- We **value member voices** and provide continual opportunities for feedback





## Our purpose and what we do

Incredible Kids supports families who have a child or young person with additional needs. We work with the whole family, recognising that parents, carers and siblings all need support alongside the child. Families can join us at any point in their journey, including before a diagnosis or before statutory services are in place.

Our support focuses on providing safe, welcoming spaces where families can spend time together, children can play in ways that suit them, and parents can meet others who understand their experiences. We also help families find their way through education, health, social care and voluntary services, offering information, reassurance and practical signposting.





## The need for our work

Families with disabled children often tell us that mainstream services are difficult to access or do not meet their needs. Many children find busy or unfamiliar environments overwhelming, and many parents feel judged or excluded in public spaces. Long waiting times for diagnosis and support can leave families without help at critical moments.

Incredible Kids fills an important gap by offering early, flexible support without requiring a diagnosis. We welcome siblings, understand that children may need to stay close to their caregivers, and take time to get to know each family. This approach helps families feel accepted and supported at a time when many feel isolated.

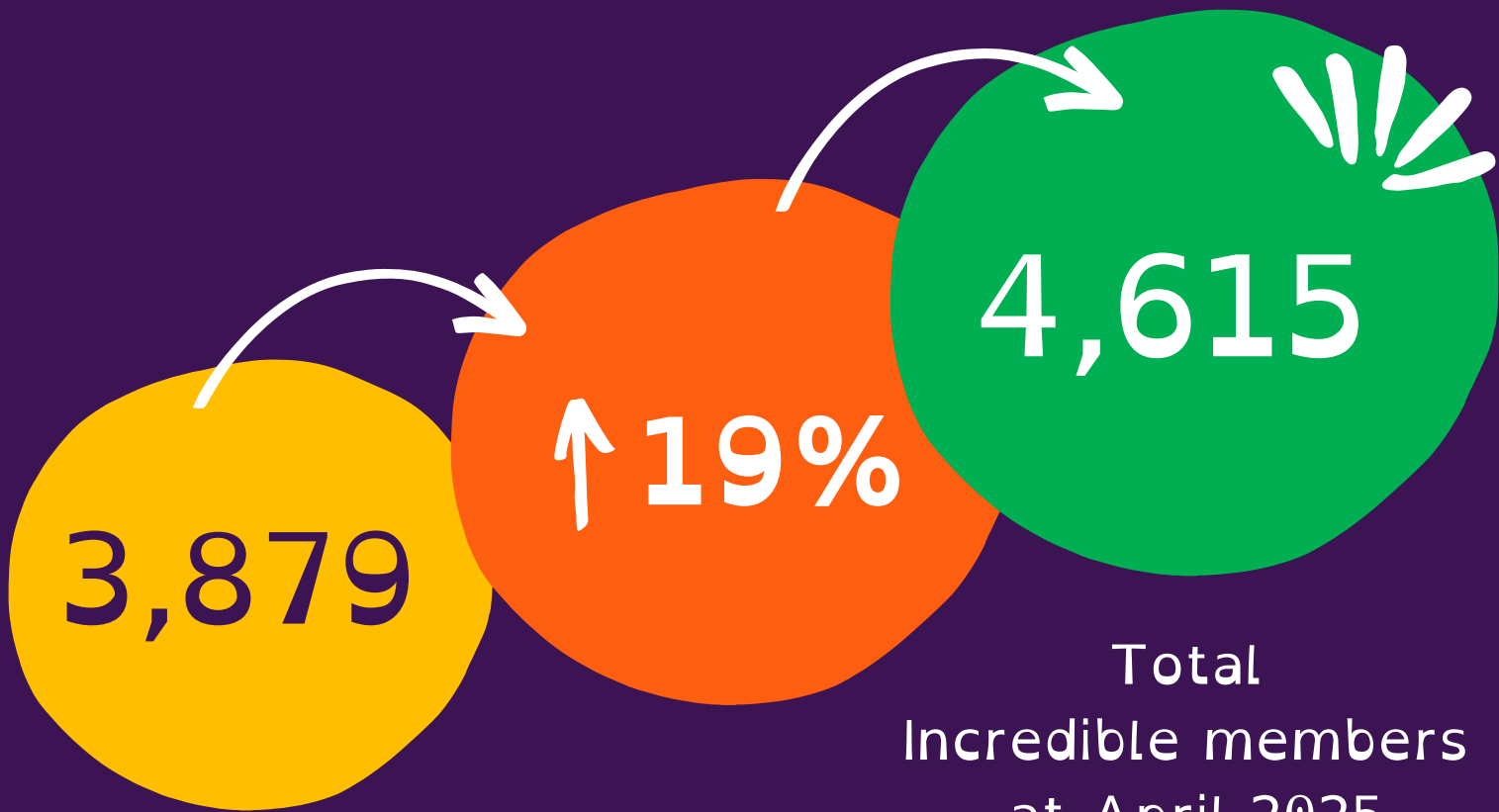
## Who we supported

During 2024–2025, Incredible Kids supported 2,906 family attendances across Bristol. On average, 267 families attended our sessions each month. Families travelled from across the city and beyond, with many attending regularly, often every week.

We supported families with a wide range of needs, including autistic children, children with learning disabilities, ADHD, sensory processing differences and complex or rare conditions. Many families had more than one child with additional needs, and some were experiencing financial hardship, housing insecurity or social isolation.

# Incredible members

April 2024- April 2025



Members in  
April 2024

Total  
Incredible members  
at April 2025





# Our play sessions

Our regular play sessions in 2024-2025 have included:

## Incredible Fridays

Our Friday's include a 3.5 hour session with a hot meal. Young people can chose to eat alongside family members, friends and new acquaintances or they can eat in a quiet space. Whichever meets their needs best. Our playworkers set up engaging STEM and art activities, play trays and welcome families as they arrive.

## Incredible Saturdays

Every single Saturday, all year round, we offer 4 play sessions. We regularly made Saturdays extra special by booking professionals in play such as lego parties, face painters, enigmatic actors and bubbleologists

## Incredible Girls

We want to help girls with additional needs forge friendships. On the first Saturday of the month, our play sessions were dedicated to girls with additional needs aged 0-25 and their families. Our passionate playworkers supported girls in whatever they fancied doing – crafts, climbing, trampoline, sandpit or simply a natter over tea and biscuits.

## PDA Support Sessions

On the last Saturday of the month, we dedicated a play session to young people with Pathological Demand Avoidance (PDA) symptoms. PDA is a form of anxiety-driven autism. This session offers families a chance to meet families with similar experiences.

## Incredible Induction

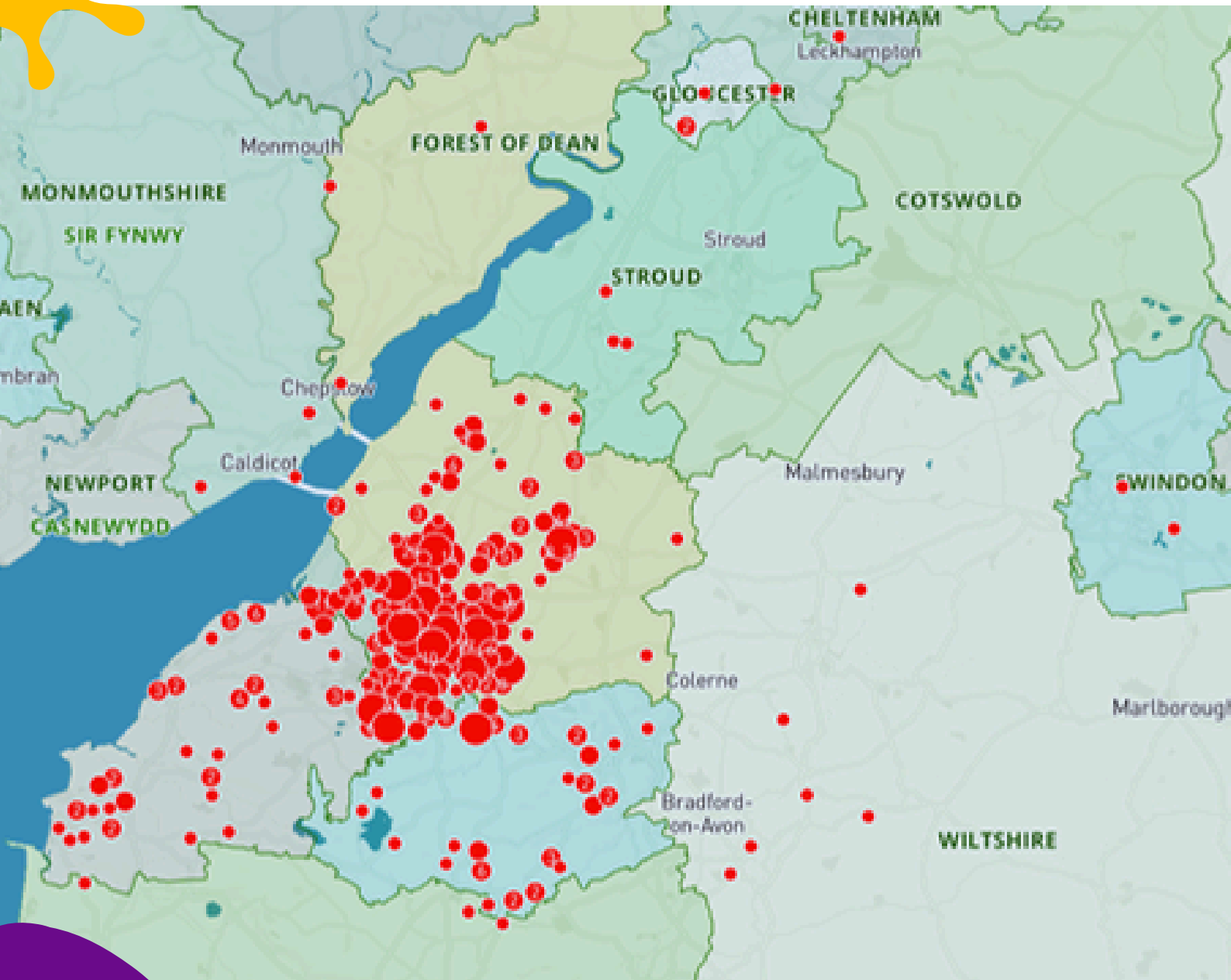
Every other month we encourage families who have never been to one of our sessions to come and feel supported. There's no pressure to talk to other families. We give a tour of the space and what we offer and there's plenty of tea and cake!

## Incredible Weekdays

During the week we offered two sessions in Filton for young people out of school. These were much smaller sessions but with a very high impact as the young people that attended were often unable to find a school to meet their needs and required a very quiet space to play.

# Who we've helped

We now support **4,615** individual people from across the south west and beyond. This means we welcomed **736** new members during the last year. Families travel from far and wide to come to Incredible Kids. Most are from the Greater Bristol area but we think this map gives a good idea of how far some people travel to come to our sessions.





## What we delivered

Throughout the year, we delivered our regular Friday and Saturday sessions, offering inclusive play and support in a safe and enclosed environment. Sessions were flexible and adapted to meet the needs of those attending. In total we offered **364** sessions totalling **702** hours of support.

As living costs increased, food and warm spaces became an important part of our support. We provided hot meals, food parcels, supermarket vouchers and recipe books where funding allowed, helping families manage rising costs while spending time together.

## The difference our work made

Families consistently told us that Incredible Kids made a positive difference to their lives. Children became more confident, tried new activities and built friendships. Parents reported feeling less isolated and more confident, with many valuing the chance to talk to others who understood their situation.

Feedback from families showed that most felt less isolated, that children were happier and more confident, and that families valued Incredible Kids as a place where they could be themselves.

**“Every time brings them so much joy, it's truly incredible. They're more open, settled better in Bristol as we're new here. We're in women's refuge and coming here made them so much happier and confident. We can't thank you enough.”** Parent at Incredible Kids



# Supporting with the cost of living

During 2024–2025, Incredible Kids used grant funding and donations to deliver a combination of inclusive play, practical support and food provision for families with disabled children. Spending during the year focused on meeting immediate needs while keeping services safe, welcoming and affordable.

## Activities and resources for children and young people

Funding was used to provide a wide range of play activities, including creative, sensory and learning-based resources. This included science and STEM-style kits and materials that allowed children to explore, experiment and learn through play, supported by trained playworkers. These activities were delivered over multiple weekends and adapted to suit different ages and needs.

## Staffing and session delivery

A significant proportion of funding supported sessional playworkers who worked directly with children and families. Playworkers helped children settle, supported positive play, and ensured sessions were inclusive and safe. Additional staffing was required during food-based sessions so children could be supported while families shared meals together.



# Supporting with the cost of living

## Venues and safe spaces

Funding contributed towards the hire of community spaces, including The Vench, which provided both indoor and outdoor environments. These spaces allowed families to attend together, with children able to play freely in secure surroundings while parents had space to talk and connect. Generous food project grants enabled us to hire extra space to create a space for a restaurant style family eating space.

## Food and cost-of-living support

As the year progressed, food and warm spaces became a central part of our work in response to rising living costs. Funding supported several types of food provision, including:

- Hot meals at Friday and Saturday sessions, enabling families to eat together in a relaxed and inclusive setting
- Food bags for families to take home, supporting weekly household food needs
- Supermarket vouchers, allowing families to choose food that met their cultural, dietary and accessibility needs
- Recipe packs and snack kits, helping families try affordable meals at home and build confidence with budgeting and meal planning
- Soup sessions, using donated and locally sourced ingredients, with playworkers and volunteers supporting children and young people to take part

Where possible, meals were sourced from small local food businesses, supporting the local economy while offering family-friendly, varied food.





# Incredible Christmas parties!

Christmas is an important time of year to all of us at Incredible Kids. We want everyone to be included in the festivities.

This year, we held 4 Christmas parties to provide a custom experience for different groups with different needs. Some children needed a quieter space than others so we held a quiet party alongside our regular parties. Volunteers baked cakes, Hartsfield Financial Services kindly donated and wrapped gifts, and our team planned every tiny detail to try to ensure everyone had fun.





## Our Incredible team

**Incredible Kids has a dedicated team of specially trained playworkers, a service manager and over 40 volunteers.**

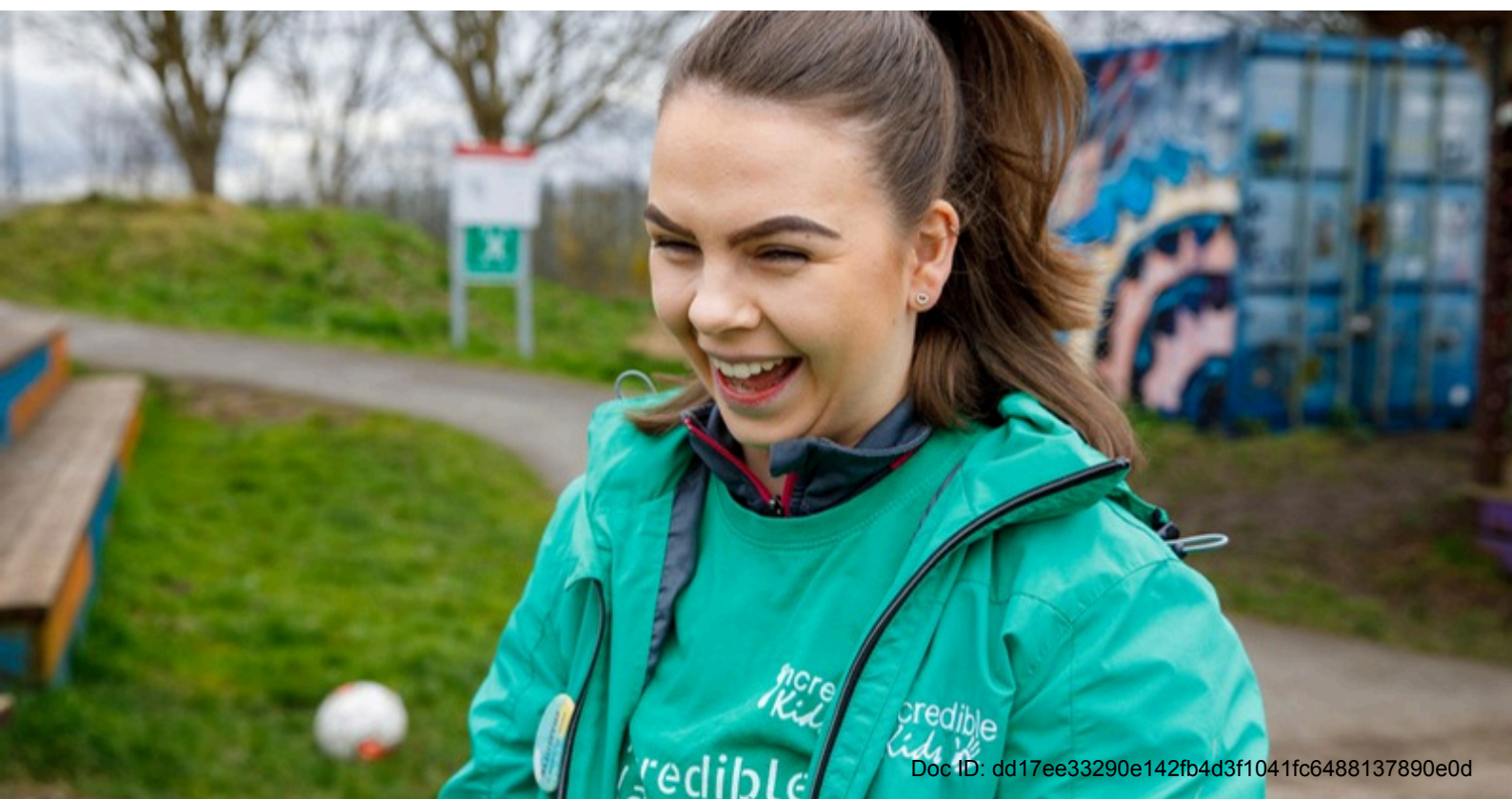
Each session is designed by our Service Manager and Senior Playworkers. Each session aims to meet the needs of our families, based on their feedback. We have a minimum of 4 playworkers on site for 30 children, supported by the Service Manager.

Our Service Manager has built trust and rapport with families, offering a unique and heart-felt approach to engagement and inclusion, ensuring that no child or family is excluded. The role provides hands-on leadership and has enabled us to improve our service.

Our team of playworkers were chosen for their experience, sensitivity, kindness and generosity of spirit. They are all DBS checked and are offered regular training to ensure their knowledge and practice provides the best quality service to children and families.

We have a network of dedicated and supportive parent-volunteers who feel invested in the service and are a valued part of its running and peer mentoring. They are supportive and welcoming and make the setting a warm and supportive place to be. These networks of valued volunteers with real lived experience and highly trained and experienced staff ensure that sessions are successful and achieve what they set out to do.

**We are the only organisation in Bristol to offer in-person parent support and play sessions specifically for disabled children and young people and thier siblings, every week, all year round.**





# Incredible Partnerships

Incredible Kids is proud to actively collaborate with other SEND support organisations and compatible services in the region to create a stronger network of support for disabled children, young people, and their families. We believe that working strategically and operationally with agencies across the public, private, and voluntary sectors allows us to achieve a broader and more meaningful impact. These partnerships enable us to address the varied and complex needs of the families we serve, ensuring they can access holistic support that extends beyond our organisation.

As an independent charity, our primary mission is to provide public benefit by supporting young people with additional needs and their families. Central to this mission is our commitment to increasing partnerships with organisations that share our values or complement our objectives, or share local knowledge. Over the past twelve years, we have collaborated with a diverse range of local SEND organisations, forming connections that have enriched the services we offer and strengthened the wider community of support.

Some of the organisations we've worked with include Bristol Autism Support, Mud Pie Explorers, Flamingo Chicks, SOS SEN, SEND Advocacy, NEON Daisy, Bristol Parent Carers, South Glos Parent Carers, The Vench, Inclusive Change, and Mamas Bristol, among many others. These partnerships have taken various forms, from co-delivering events and activities to sharing expertise and resources that enhance the services available to families.

In addition to our collaborative projects, we've created a comprehensive welcome pack for the families who join our community. This pack not only introduces them to Incredible Kids but also signposts them to a wide range of local organisations and services. By doing so, we ensure that families can benefit from a wider network of support, accessing resources and opportunities tailored to their specific needs. Through these partnerships, we continue to strengthen our mission of reducing social isolation, improving mental wellbeing, and supporting the development of disabled children and young people.





## Public benefit

The trustees confirm that they have had due regard to the Charity Commission's guidance on public benefit when reviewing the charity's activities and planning for the year.

Incredible Kids provides public benefit by supporting disabled children and young people and their families, a group that faces significant barriers to participation, wellbeing and inclusion. Our activities are designed to reduce social isolation, improve mental wellbeing and help families cope with the practical and emotional challenges of caring for a child with additional needs.

The charity's services are open and inclusive. Families can access support without needing a formal diagnosis, which removes a common barrier to help at an early stage. Children attend with their parents or carers, and siblings are welcomed and supported. This whole-family approach reflects the reality of family life and ensures the benefits of our work extend beyond the individual child.

Through inclusive play sessions, families benefit from safe and supportive environments where children can play in ways that suit them, build confidence and form friendships. Parents and carers benefit from peer support, shared understanding and access to information that helps them navigate education, health and social care systems.

During the year, the charity also responded to rising living costs by providing food support, including hot meals, food parcels, vouchers and practical resources. This support helped families meet basic needs with dignity, reduced financial pressure and made it possible for families to attend sessions together.

The trustees believe that these activities provide clear public benefit by addressing unmet need, supporting wellbeing and strengthening community connections for families who would otherwise be isolated.



# Risk

The Trustees maintain and regularly review an organisational risk assessment, which is a standing agenda item at Trustee meetings. This process identifies key risks to the charity, assesses their likelihood and potential impact, and assigns an overall risk score. It ensures Trustees can prioritise critical risks and implement effective mitigation strategies. The primary risk currently facing Incredible Kids is securing sufficient funds to sustain our services. The financial year was challenging, and our volunteer fundraisers worked tirelessly to secure the resources needed to continue operating. Recognising the difficult environment charities face, the Trustees have increased the focus on volunteer-led fundraising efforts to strengthen our financial position.

Staff and volunteer retention remains high, reflecting the supportive and engaging environment Incredible Kids offers. We provide free mental health and wellbeing support, and many staff members bring valuable lived experience to their roles, fostering a strong and compassionate workplace culture. We also have robust contingency plans to adapt sessions at short notice during adverse weather, minimising disruptions to our service.

A significant ongoing risk is securing a permanent venue to deliver our services. Currently, we rent space from Groundwork UK, which has provided a vital base. However, establishing a dedicated, permanent space remains a key priority. Funding received represents important progress towards achieving our goal of an Incredible Home, enabling us to operate full-time and provide expanded support to the families who depend on our services. These proactive measures and long-term strategies demonstrate our commitment to addressing challenges and ensuring the sustainability of our services for the families we serve.



# Our finances

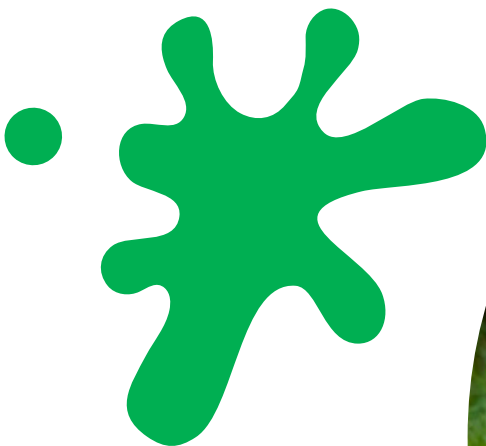
## Financial Sustainability and Progress

During the year, trustees continued to focus on maintaining the charity's financial sustainability in a challenging funding environment. With rising costs and increasing demand for our services, we placed particular emphasis on diversifying income and seeking funding that aligned closely with families' needs.

A positive development this year was the receipt of a significant corporate donation from Cero Generation, which provided valuable unrestricted support and strengthened our financial position. This contribution demonstrated the potential for corporate giving to play a meaningful role alongside our established income from trusts, foundations and community fundraising.

Trustees also focused on developing relationships with new funders who support food and cost-of-living projects. This enabled the charity to respond directly to the growing pressures faced by families, particularly through food provision, warm spaces and practical household support. Targeted funding for these projects allowed us to meet immediate needs while continuing to deliver our core services.

Together, these developments represent important progress towards a more balanced and resilient funding mix. While the fundraising landscape remains difficult for small charities, trustees believe that broadening income sources and strengthening relationships with corporate and project-specific funders will support greater financial stability in the years ahead.



# Our finances

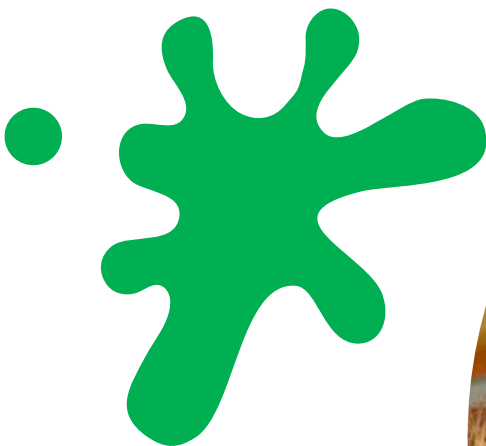
## Financial Sustainability and Progress

During the year ending 31 March 2025, Incredible Kids recorded a total income of £139,666, compared with £118,560 in the previous year. This increase reflects a combination of grant income, donations and interest received on funds held.

Income from donations and legacies totalled £22,338, an increase on the previous year. This included a significant corporate donation, alongside continued support from community fundraising and individual donors. Grant income remained a core source of funding, with £58,100 received as restricted grants for specific projects and £52,470 received as unrestricted grants to support core costs and service delivery. The charity also received £6,758 in interest, reflecting funds held during the year, including restricted balances.

Total expenditure for the year was £129,238, compared with £118,908 in the previous year. The increase in expenditure reflects rising costs and increased demand for services. The majority of spending related directly to charitable activities.

Staffing costs totalled £69,836, reflecting the delivery of sessions across the year, increased sessional support and wider cost-of-living pressures. Rent and rates rose to £25,615, reflecting increased venue hire costs. Purchases, including food, session materials and activity supplies, totalled £24,530, reflecting the charity's response to cost-of-living pressures through food provision and practical support for families.



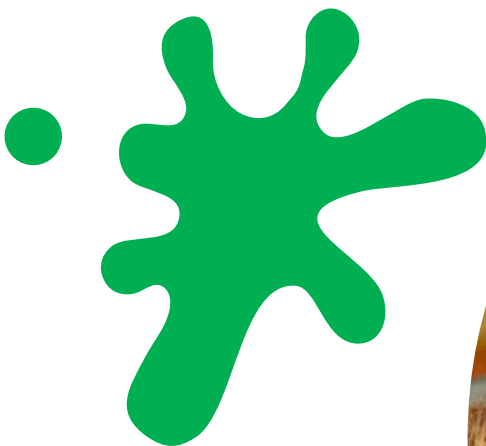
# Our finances

Other costs, including administration, training, professional fees and bank charges, were carefully controlled and remained modest in proportion to overall expenditure.

The charity recorded a surplus of £10,428 for the year, compared with a small deficit in the previous year. Trustees consider this surplus appropriate in the context of financial uncertainty and rising costs and view it as supporting short-term stability rather than representing excess funds.

At the year end, total funds held were £344,283. A significant proportion of these funds are held as restricted funds for future premises. These funds are ringfenced for this purpose and are not available for day-to-day running costs or service delivery. Freely available reserves therefore remain limited to three months reserves, and trustees continue to monitor this closely.

Trustees remain aware that, despite a positive outturn for the year, financial pressures are increasing. Rising costs, short-term funding arrangements and growing demand for support mean that maintaining financial sustainability remains a key focus. Trustees will continue to manage resources carefully, prioritise essential services and seek a balanced mix of funding to support the charity's work in the year ahead.



### **Reserves Policy and Future Plans**

We continue to hold three months' worth of unrestricted reserves to protect against financial uncertainty and safeguard service delivery. Additionally, £255,768 remains reserved for our goal of securing a permanent venue, an ambition that will enable us to expand and enhance our services.

### **A Year of Generosity**

The financial support from our community and funders has been pivotal in navigating this challenging year. A special thank you goes to all our supporters, big and small, who have shown incredible generosity in responding to the challenges and opportunities faced by Incredible Kids.

As we look ahead, we remain committed to strengthening our financial position, exploring new opportunities, and ensuring that every pound is invested in delivering vital support to disabled children, young people, and their families.





## Incredible donors

Thank you to all of our funders, donors, supporters and every single member of Incredible Kids who donates to us!

Thank you!  
You're  
Incredible



# Our charity's purposes and aims

Incredible Kids provides play and support services to families with a child or young person with a disability or additional need to strengthen and support family life, reduce inequality and social isolation. Activities include daytime family play sessions for young people with additional needs and their siblings in a safe, supported environment alongside advice and support for parent-carers.

Our charity's purposes are set out in the objects contained in the Charity's Constitution:

1. THE RELIEF OF CHILDREN WITH ADDITIONAL NEEDS; AND

2. PROVIDING RELIEF AND RESPITE TO THE FAMILY AND CARERS OF THE CHILDREN; THESE OBJECTS SHALL BE FURTHERED IN PARTICULAR BUT NOT EXCLUSIVELY BY:

A) PROVIDING CARE FOR THE CHILDREN AND PROVIDING OPPORTUNITIES FOR THEM TO SOCIALISE AND PLAY TOGETHER; AND

B) ALLOWING PARENTS AND CARERS TO TAKE A SHORT BREAK FROM THE PRESSURES OF EVERYDAY LIFE AND ENCOURAGING A MUTUALLY SUPPORTIVE ENVIRONMENT FOR PARENTS AND CARERS.

WE DEFINE THOSE WITH ADDITIONAL NEEDS AS CHILDREN AND YOUNG PEOPLE WHO HAVE A PHYSICAL, SENSORY, COMMUNICATION, BEHAVIOURAL OR LEARNING DIFFICULTY, OR HAVE A LONG TERM/LIFE LIMITING CONDITION

Our organisation provides an inclusive and welcoming space with specialist toys and equipment that meet the children's needs. It enables them to play, have fun, and make new friends, and is a place where children, their siblings, and parents/carers alike can come together for acceptance, mutual support, and a sense of belonging. We provide a range of support for the whole family, including:

- Family play sessions for children and young people with additional needs, delivered by specially trained playworkers who engage the children in fun and meaningful play.
- Family play sessions for siblings of children and young people with additional needs, which helps improve understanding and the wellbeing of the whole family.
- Provision of training and support to parents/carers to help increase their knowledge and resilience in their ability to parent and access specialist services.
- A series of special events each year for families to attend.

We refer to the guidance contained in the Charity Commission's general guidance on public benefit when reviewing the charity's aims and objectives and in planning its activities for the following year.

Our governing document is our Incredible Kids 'Foundation' model Constitution.

# Board of Trustees

Incredible Kids is governed by a Board of Trustees who are responsible for the strategic direction, financial oversight and good governance of the charity.

Trustees are appointed by the existing Board in line with the charity's governing document. When recruiting new trustees, the Board considers the skills, experience and lived experience needed to support the effective running of the charity.

New trustees receive an induction and relevant information to support them in their role. Trustees keep their training and understanding under review to ensure they can fulfil their responsibilities effectively.

The Board includes trustees with direct experience of using the charity's services, helping to ensure that decisions are informed by the needs of families supported by Incredible Kids.



## Statement of trustees' responsibilities

The trustees are responsible for preparing the Trustees' Report and the financial statements in accordance with applicable law and United Kingdom Accounting Standards including Financial Reporting Standard 102: The Financial Reporting Standard applicable in the UK and Republic of Ireland (United Kingdom Generally Accepted Accounting Practice).

The law applicable to charities in England & Wales/Scotland/Northern Ireland requires the trustees to prepare financial statements for each financial year which give a true and fair view of the state of affairs of the charity and of the income and expenditure of the charity for that period. In preparing these financial statements, the trustees are required to:

- select suitable accounting policies and then apply them consistently;
- observe the methods and principles in the Charities SORP;
- make judgments and accounting estimates that are reasonable and prudent;
- state whether applicable UK Accounting Standards have been followed, subject to any material departures disclosed and explained in the financial statements; and
- prepare the financial statements on the going concern basis unless it is inappropriate to presume that the charity will continue in business.

The trustees are responsible for keeping sufficient accounting records that disclose with reasonable accuracy at any time the financial position of the charity and enable them to ensure that the financial statements comply with the Charities Act 2011, the Charity (Accounts and Reports) Regulations 2008 and the provisions of the trust deed/constitution. They are also responsible for safeguarding the assets of the charity and hence for taking reasonable steps for the prevention and detection of fraud and other irregularities.



Statement of Financial Activities to 31st March 2025

The following accounts have been prepared in accordance with the Statement of Recommended Practice (SORP) issued by the Charity Commission to comply with the Executive Committee's obligations as the trustees of the Charity for keeping accounting records

	2025	2025	2024	2024
	£	£	£	£
<b>Income</b>				
Subscriptions & Donations				
<i>Donations &amp; Legacies</i>	22,338.07		12,340.05	
Grants				
<i>Restricted</i>	58,100.00		53,530.00	
<i>Unrestricted</i>	52,470.00		46,689.05	
<i>Interest Received</i>	6,758.41		6,000.94	
<b>Total Income</b>		<u>139,666.48</u>		<u>118,560.04</u>
<b>Expenditure</b>				
Direct Charity				
<i>Rent &amp; Rates</i>	25,614.51		23,553.15	
<i>Insurance</i>	545.91		512.87	
<i>Fundraising Costs</i>	47.98		149.07	
<i>Advertising/Promotional</i>	1,421.92		847.65	
<i>Audit Fee</i>	800.00			
<i>Training</i>	551.51		958.09	
<i>Office/Administration Costs</i>	3,260.31		3,852.67	
<i>Purchases</i>	24,530.17		29,449.75	
<i>Payroll Expenditure</i>	69,835.64		54,798.21	
<i>Volunteer Costs</i>	14.20			
<b>Total Direct Charity Costs</b>		<u>126,622.15</u>		<u>114,121.46</u>
Other Costs				
<i>Service Costs</i>				
<i>Legal &amp; Professional</i>	2,378.16		4,359.65	
<i>Courier Costs</i>			270.00	
<i>Bank Charges</i>	144.82		63.50	
<i>Depreciation</i>	93.23		93.23	
<b>Total Other Costs</b>		<u>2,616.21</u>		<u>4,786.38</u>
<b>Total Expenditure</b>		<u>129,238.36</u>		<u>118,907.84</u>
<b>Surplus/Deficit</b>		<u>10,428.12</u>		<u>(347.80)</u>
<b>Funds B/Fwd</b>		<u>333,854.96</u>		<u>334,202.76</u>
<b>Total Funds</b>		<u>344,283.08</u>		<u>333,854.96</u>
<b>Funded By:</b>				
<i>Fixed Assets</i>		49,722.69		49,871.22
<i>Current Account</i>		8,058.83		6,414.29
<i>Gold Account Restricted</i>		263,603.89		255,768.98
<i>Refreshments Account</i>		8,917.92		9,689.92
<i>Donations Account</i>		15,150.37		13,461.88
<i>Paypal</i>		(1,832)		(1,832)
<i>Debtors</i>		674.13		368.07
<i>Creditors</i>		(153)		(28)
<i>Other Assets</i>		140.25		140.25
<b>Total Funds Carried Forward</b>		<u>344,283.02</u>		<u>333,854.96</u>

**Notes to the Accounts**

- 1. The accounts are prepared on a receipts and payments basis and no account has been taken of accrued/prepaid income or expenditure**
- 2. Detailed Restricted Income/Expenditure report attached**

**Independent Examiners Report to the Trustees of Incredible Kids**

**Respective responsibilities of Trustees and Examiner**

**The charity's trustees are responsible for the preparation of the accounts. The charity's trustees consider that an audit is not required for this year under section 144 of the Charities Act 2011 (the charities act) and that an independent examination is needed.**

**It is my responsibility to:**

**examine the accounts under section 145 of the Charities Act to follow the procedures laid down in the general Direction given by the Charity Commission (under section 145(5)(b) of the Charities Act) and to state whether particular matters have come to my attention**

**Basis of independent examiners statement**

**My examination was carried out in accordance with general directions given by the Charity Commission. An examination includes a review of the accounting records kept by the charity and a comparison of the accounts presented with these records. It also includes consideration of any unusual items or disclosures in the accounts, and seeking explanations from the trustees concerning any such matters. The procedures undertaken do not provide all the evidence that would be required in an audit, and consequently no opinion is given as to whether the accounts present a 'true and fair' view and the report is limited to those matters set out in the statement below,**

**Independent Examiners Statement**

**In connection with my examination, no matter has come to my attention:**

- 1. which gives me reasonable cause to believe that in, any material respect, the requirements to keep accounting records in accordance with section 130 of the Charities Act to prepare accounts which accord with the accounting records and comply with the with the accounting requirements of the Charities Act have not been met; or**
- 2. to which, in my opinion, attention should be drawn in order to enable a proper understanding of the accounts to be reached.**

**Michael Bowles  
MJIB Accounting Ltd  
28th January 2025**

*M J Bowles*

01 / 29 / 2026

**Incredible Kids**  
**Restricted Funding Statement**  
 April 1, 2024 - March 31, 2025

Distribution account	BYCA Half Term Grant	Feeding Bristol Household Support	John James	National Grid STEM	Quartet Community (deleted)	Quartet Resilience	The Van Neste Foundation	Total
Income								
Grants - Restricted	3,600.00	13,800.00	7,700.00	5,000.00	8,000.00	10,000.00	10,000.00	56,100.00
<b>Total for Income</b>	<b>3,600.00</b>	<b>13,800.00</b>	<b>7,700.00</b>	<b>5,000.00</b>	<b>8,000.00</b>	<b>10,000.00</b>	<b>10,000.00</b>	<b>56,100.00</b>
Cost of Sales								
<b>Gross Profit</b>								
Expenses								
Advertising/Pr com of total		69.71	22.17	147.95				0.00
Audit Fee							245.00	484.83
Bank charges								0.00
Computer Costs						667.99		1,073.26
Insurances								0.00
Legal and professional fees								0.00
Office/General Administrative Expenses			114.32					164.32
Other Professional Services							50.00	0.00
Payroll Expenses								1,436.07
Payroll Expenditures - Membership Enquiries		806.32	240.00			240.00		930.00
Payroll Expenditures - Payroll Fees			1,211.25	330.00		180.00		2,505.15
Payroll Expenditures - Playworkers	1,940.85	4,589.34	4,506.78	2,788.94	2,047.56	1,158.90	135.00	20,206.14
Payroll Expenditures - Session Administration		67.00	142.46	416.96		17.99	4,314.68	626.42
Payroll Expenditures - Session Supervision			563.66					563.66
Payroll - Fundraising								0.00
Volunteer Costs		6.50						6.50
<b>Total for Payroll Expenses</b>	<b>1,940.85</b>	<b>5,489.16</b>	<b>6,664.15</b>	<b>3,535.90</b>	<b>2,047.56</b>	<b>1,896.89</b>	<b>5,019.43</b>	<b>27,996.35</b>
Phone Costs		40.00					60.00	0.00
Printing, Postage and Stationery								0.00
Purchases								1,772.00
Membership System								1,078.09
Session Costs - Session Activities	400.00		1,335.00				37.00	2,302.88
Session Costs - Toys & Equipment	89.91	125.83	402.89	382.90			76.56	9,041.80
Session Expenses - General Session Costs		1,600.47	656.46				43.95	297.99
Session Expenses - Refreshments	360.24	3,004.45	202.92	12.75	5,452.44			0.00
Virtual Service - Newsletter		37.38	40.11	220.50				0.00
Virtual Service - Social Media								0.00
<b>Total for Purchases</b>	<b>859.15</b>	<b>4,788.13</b>	<b>2,639.38</b>	<b>616.15</b>	<b>5,452.44</b>		<b>157.51</b>	<b>760.00</b>
Raising funds								4,559.00
Rent or Lease of Buildings		750.00						0.00
Renting Session Facilities	800.00	2,559.00		700.00	500.00			£5,309.00
Storage Facility								421.91
<b>Total for Rent or Lease of Buildings</b>	<b>800.00</b>	<b>3,309.00</b>		<b>700.00</b>	<b>500.00</b>		<b>217.93</b>	<b>£46,320.02</b>
Training		144.00	59.98					9,779.98
Travel and Accommodation								0.00
<b>Total for Expenses</b>	<b>3,600.00</b>	<b>13,800.00</b>	<b>9,500.00</b>	<b>5,000.00</b>	<b>8,000.00</b>	<b>2,264.88</b>	<b>6,155.14</b>	
<b>Balance of Restricted Funding</b>	<b>0.00</b>	<b>0.00</b>	<b>-1,800.00</b>	<b>0.00</b>	<b>0.00</b>	<b>7,735.12</b>	<b>3,844.86</b>	



## Incredible Trustees

- Jennie Prewett (Chair)
- Dominic Fletcher
- Jai Breitnauer

Incredible Kids registered as a charity on 11th March 2013 as a Charitable Incorporated Organisation. Our governing document is our Incredible Kids 'Foundation' model Constitution. Charity Registration Number 1151185.

## Declarations

The Incredible Kids trustees declare that they have approved the trustees report above on the 28th January 2026

Jennie Prewett, Dominic Fletcher and Jai Breitnauer. Signed on behalf of the charity's trustees.

Email: [contact@incrediblekids.org.uk](mailto:contact@incrediblekids.org.uk)

Website: [incrediblekids.org.uk](http://incrediblekids.org.uk)

*J.Prewett*

Jennie Prewett

01 / 28 / 2026



Address:  
Incredible Kids  
C/O The Vench  
Romney Avenue  
Lockleaze  
Bristol, BS7 9TD



---

Title	Accounts 2024 2025
File name	Annual_Report_and_Accounts_2024_2025.pdf
Document ID	dd17ee33290e142fb4d3f1041fc6488137890e0d
Audit trail date format	MM / DD / YYYY
Status	● Signed

---

## Document history

 SENT	<b>01 / 28 / 2026</b> 21:34:36 UTC	Sent for signature to Jennie Prewett (jennie.prewett@incrediblekids.org.uk) and Michael Bowles (mike500s@hotmail.co.uk) from jennie.prewett@incrediblekids.org.uk IP: 185.231.141.88
 VIEWED	<b>01 / 28 / 2026</b> 21:34:37 UTC	Viewed by Jennie Prewett (jennie.prewett@incrediblekids.org.uk) IP: 185.231.141.88
 SIGNED	<b>01 / 28 / 2026</b> 21:35:17 UTC	Signed by Jennie Prewett (jennie.prewett@incrediblekids.org.uk) IP: 185.231.141.88
 VIEWED	<b>01 / 28 / 2026</b> 21:36:18 UTC	Viewed by Michael Bowles (mike500s@hotmail.co.uk) IP: 31.96.195.185

---

Title	Accounts 2024 2025
File name	Annual_Report_and_Accounts_2024_2025.pdf
Document ID	dd17ee33290e142fb4d3f1041fc6488137890e0d
Audit trail date format	MM / DD / YYYY
Status	● Signed

---

### Document history



**01 / 29 / 2026**  
08:44:45 UTC

Signed by Michael Bowles (mike500s@hotmail.co.uk)  
IP: 31.96.195.185



**01 / 29 / 2026**  
08:44:45 UTC

The document has been completed.

**INCREDIBLE KIDS**

England & Wales - Charity number 1151185

---

# Accounts

---

# Incredible Kids 2023-2024

Registered charity 1151185

▶ [incrediblekids.org.uk](https://incrediblekids.org.uk)

Incredible  
 Kids



Inclusive play ● Family support ● Improving wellbeing

Providing play opportunities and a support network to young people with additional needs and their families

## A note from our Incredible Trustees

Every year at Incredible Kids brings new challenges, new projects and new families and this year was no different. As trustees this was an especially difficult year on a personal level as much loved and long standing trustee Sandie Davis lost her battle with pancreatic cancer and died quicker than any of us expected. This has left a big hole in our team that will impact us as trustees. Sandie fought for the rights of families at Incredible Kids at the highest level, something not always seen by families who visit us but they will have benefited from the work she did.

The environment in which we operate continues to be tough. We are a small charity doing big things. A small team, achieving so much. Price rises affect the families we support, and the cost of everything we do. Funding requires more work from our small team of volunteers to secure, to make sure we are able to continue our vital work supporting disabled children. We will never stop fighting for the resources to help people.

The projects we highlight in this report show our focus on keeping families well fed, warm, happy and well informed. We began some STEM projects which brought excitement and learning to our sessions. Our focus remains on finding our forever home in line with Sandie's legacy.

**Incredible Kids provides a lifeline for young people and their families in Bristol.**





“Incredible kids gives my daughters a space in which they can be themselves. They get to experience new activities and meet new people which helps them with social situations in their everyday lives.”



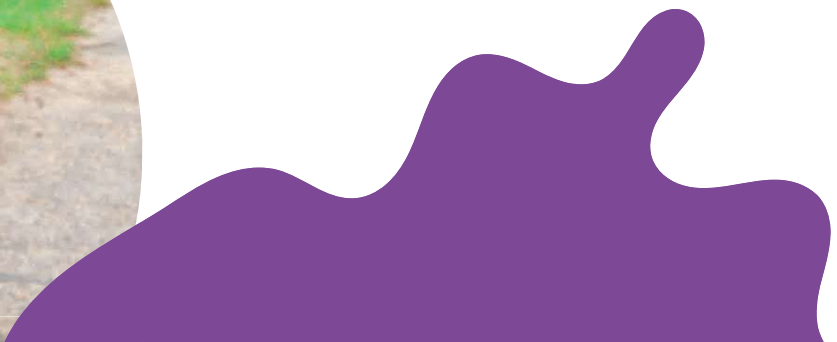
## What we do

### We provide a service where...

- children and young people with disabilities **engage in play** with their parents and carers
- **siblings** of children with additional needs have a space to play and be valued in their own right
- children have access to **specialist equipment** and toys
- **parents and carers access support** and signposting
- parents and children have the opportunity for ownership through **volunteering** and participation
- families become part of a **mutually supportive community**

### How we work

- We are a **grassroots charity** where our families are at our core
- We respond quickly to **change**
- We **understand our families'** needs
- Work in **highly creative** ways to support families
- We test new projects and ideas our members or staff suggest
- Work with a **multi-agency approach** to provide bespoke support to families
- We make a difference to members' lives by creating a **mutually supportive environment**
- We **value member voices** and provide continual opportunities for feedback





## Our achievements 2023-2024

### What did we offer?

Last year, we continued to offer weekly sessions on Fridays and Saturdays with 5 sessions a week held at The Vench in Lockleaze. Each weekend, we welcomed around 110 children and their parent carers for a total of 9.5 hours a week!

In response to a survey of our members, in March 2024 we embarked on midweek sessions at Filton Children's Centre for 3 hours a week on Tuesdays and Wednesdays. These sessions are designed for children who are not in school either because they are too young to start or because they are home educated or unable to attend school for lack of a suitable place.

We reintroduced Incredible Dads play sessions to encourage Dads to connect and build a support network. We also began holding regular Incredible Induction sessions dedicated to welcoming and supporting families who are not familiar with our service.



# Incredible members

August 2023 - September 2024



Members in  
August 2023

Total  
Incredible Kids  
members today!



# Incredibly social

Our Facebook, Instagram, LinkedIn and X/Twitter followers

New  
followers  
since Aug  
2023

+491

7,801

Followers in  
total across  
social media

## Facebook support group

Join our private group: Incredible Kids Bristol

New  
members  
of the  
group since  
Aug 2023

+249

1,574

Members in  
our Facebook  
support group



# Our play sessions

Our regular play sessions in 2023-2024 have included:

## Incredible Fridays

Towards the end of 2022 we chose to combine our Incredible Teens session and our after-school play session on a Friday into one big session with a hot meal. We rotate our Friday menu between pizza, pasta, hot dogs and toasties – all accompanied by our milkshake bar.

## Incredible Saturdays

Every single Saturday we offer 4 play sessions, including Christmas Eve and New Year's Eve. We regularly made Saturdays extra special by booking professionals in play such as lego parties, face painters, enigmatic actors and bubbleologists

## Incredible Girls

We want to help girls with additional needs forge friendships. On the first Saturday of the month, our play sessions were dedicated to girls with additional needs aged 0-25 and their families. Our passionate playworkers supported girls in whatever they fancied doing – crafts, climbing, trampoline, sandpit or simply a natter over tea and biscuits.

## PDA Support Sessions


On the last Saturday of the month, we dedicated a play session to young people with Pathological Demand Avoidance (PDA) symptoms. PDA is a form of anxiety-driven autism. This session offers families a chance to meet families with similar experiences.

## Incredible Dads

Every other month (alternating with Incredible Induction sessions), we hold a space designed for Dads and their kids to bond. We want to help Dads who have a child with additional needs connect with other incredible Dads and build their supportive community. Whether you'd both enjoy Lego, crafts, a game of footy or simply getting messy with slime or glue – we want Dads and their kids to enjoy being silly together.

## Incredible Induction

Every other month (alternating with Incredible Dads sessions), we encourage families who have never been to one of our sessions to come and feel supported. There's no pressure to talk to other families. We give a tour of the space and what we offer and there's plenty of tea and cake!



# Who we've helped

We now support **1,208** families in the local area or **3,745** individual people. This means we welcomed **857** new members during the last year. Families travel from far and wide to come to Incredible Kids. Most are from the Greater Bristol area but we think this map gives a good idea of how far some people travel to come to our sessions.





## Our impact

We surveyed our members to find out the ways in which we had made an impact on them.

- **100% of families told us they would recommend us**
- **100% of families told us their children had fun at Incredible Kids**
- **87% told us Incredible Kids has increased their child's confidence**
- **97% of families felt their children enjoyed the activities**
- **74% of families felt their child was happier because of Incredible Kids**
- **79% of families told us Incredible Kids has increased their child's wellbeing**

## New SEND Family Advocate

One score which we want to improve upon is the number of people who felt we had helped them access other services. 35% of families felt we had but we want to do much more than this. As a result, we have fundraised for a SEND advocate to support families to access more support. We look forward to building on that score significantly over the next year.

Our new SEND Family Advocate Cathy was hired in September 2024 and attends our play sessions every Saturday between 10am and 3pm at The Vench in Lockleaze to help families to navigate the special education needs and disabilities (SEND) landscape. She also runs workshops so sign up to our newsletter to hear about our latest events and opportunities.



**Meet our SEND  
Family Advocate,  
Cathy!**



# Supporting with the cost of living

As one of the large supermarkets used to say, *every little helps*. We can't fix the cost of food in the shops, but we did all we could to go the extra mile for our members.

Over the last year, we created wellbeing packs containing little treats that showed our members that we care and aimed to make a little difference in their lives. We produced multiple packs during the year which included hot water bottles, soft blankets, energy saving / money saving tools, vouchers for food at the supermarket, little notes of encouragement, a welcome chocolate bar, nightlights to help encourage sleep, radiator keys emblazoned with a smile to cheer the soul whilst undertaking a tedious task.

In total we gave out 70 Incredible Care Kits, 90 Incredible Warm Packs and 70 Incredible Energy Saving Packs. We also provided 110 meals each week since November including hot soup, an Indian meal, burger night and hundreds of packed lunches. It won't change everything but the time they spend with us we hope made a difference.





## 5 Incredible Christmas parties!

Christmas is an important time of year to all of us at Incredible Kids. We want everyone to be included in the festivities.

This year, we held **5** Christmas parties to provide a custom experience for different groups with different needs. Some children needed a quieter space than others so we held a quiet party as well as a smaller party for children with PDA and one just for girls. Volunteers baked cakes, collected and wrapped gifts, decorated The Vench and planned every tiny detail to try to ensure everyone had fun.





## Our Incredible team

Incredible Kids has a dedicated team of specially trained playworkers, a service manager and over 40 parent-volunteers.

Each session is designed by our Service Manager and Senior Playworkers. Each session aims to meet the needs of our families, based on their feedback. We have a minimum of 4 playworkers on site for 30 children, supported by the Service Manager.

Our Service Manager has built trust and rapport with families, offering a unique and heart-felt approach to engagement and inclusion, ensuring that no child or family is excluded. The role provides hands-on leadership and has enabled us to improve our service.

Our team of playworkers were chosen for their experience, sensitivity, kindness and generosity of spirit. They are all DBS checked and are offered regular training to ensure their knowledge and practice provides the best quality service to children and families.

We have a network of dedicated and supportive parent-volunteers who feel invested in the service and are a valued part of its running and peer mentoring. They are supportive and welcoming and make the setting a warm and supportive place to be. These networks of valued volunteers with real lived experience and highly trained and experienced staff ensure that sessions are successful and achieve what they set out to do.

We are the only organisation in Bristol to offer in-person parent support and play sessions specifically for disabled children and young people, every week, all year round.





# Incredible Partnerships

Incredible Kids is proud to actively collaborate with other SEND support organisations and compatible services in the region to create a stronger network of support for disabled children, young people, and their families. We believe that working strategically and operationally with agencies across the public, private, and voluntary sectors allows us to achieve a broader and more meaningful impact. These partnerships enable us to address the varied and complex needs of the families we serve, ensuring they can access holistic support that extends beyond our organisation.

As an independent charity, our primary mission is to provide public benefit by supporting young people with additional needs and their families. Central to this mission is our commitment to increasing partnerships with organisations that share our values or complement our objectives, or share local knowledge. Over the past twelve years, we have collaborated with a diverse range of local SEND organisations, forming connections that have enriched the services we offer and strengthened the wider community of support.

Some of the organisations we've worked with include Bristol Autism Support, Mud Pie Explorers, SOS SEN, SEND Advocacy, NEON Daisy, Bristol Parent Carers, South Glos Parent Carers, The Vench, Special Friends Club, Inclusive Change, and Mamas Bristol, among many others. These partnerships have taken various forms, from co-delivering events and activities to sharing expertise and resources that enhance the services available to families.

In addition to our collaborative projects, we've created a comprehensive welcome pack for the families who join our community. This pack not only introduces them to Incredible Kids but also signposts them to a wide range of local organisations and services. By doing so, we ensure that families can benefit from a wider network of support, accessing resources and opportunities tailored to their specific needs. Through these partnerships, we continue to strengthen our mission of reducing social isolation, improving mental wellbeing, and supporting the development of disabled children and young people.





# Public benefit

In setting our objectives and planning our activities, our Trustees have given careful consideration to the Charity Commission's general guidance on public benefit. This report outlines how our performance during the year has benefitted the public.

## Contribution made by volunteers

Established in 2012 by parents and dedicated volunteers, Incredible Kids places a strong emphasis on the pivotal role played by our volunteers. Many of these volunteers are also beneficiaries of our charity, underscoring our commitment to actively involve parents and carers in our volunteering efforts. Nothing demonstrates the incredible impact of our volunteers more than the receipt of the Queens Award for Voluntary Service.

Throughout the past year, our volunteers remained instrumental in providing essential support, allowing us to operate amidst ever-changing restrictions. With regulations on numbers fluctuating frequently, our volunteers adapted and revamped our booking system. The introduction of our online management system, facilitated by volunteers, not only streamlined our operations but also enhanced the coordination of novel working approaches.

The contribution of our Incredible Bakers brought moments of joy as they delivered delectable treats for the children. In parallel, new volunteer playworkers, including those on placements from local universities, joined our ranks. Our management team provided support to these individuals, aiding them in constructing portfolios that documented their experiences with us. Several of these volunteers have transitioned into long-term roles within our playworker team, experiencing personal development in their career paths for the future.



# Risk

The Trustees maintain and regularly review an organisational risk assessment, which is a standing agenda item at Trustee meetings. This process identifies key risks to the charity, assesses their likelihood and potential impact, and assigns an overall risk score. It ensures Trustees can prioritise critical risks and implement effective mitigation strategies. The primary risk currently facing Incredible Kids is securing sufficient funds to sustain our services. The 2023/24 financial year was challenging, and our volunteer fundraisers worked tirelessly to secure the resources needed to continue operating. Recognising the difficult environment charities face, the Trustees have increased the focus on volunteer-led fundraising efforts to strengthen our financial position.

Staff and volunteer retention remains high, reflecting the supportive and engaging environment Incredible Kids offers. We provide free mental health and wellbeing support, and many staff members bring valuable lived experience to their roles, fostering a strong and compassionate workplace culture. We also have robust contingency plans to adapt sessions at short notice during adverse weather, minimising disruptions to our service. A significant ongoing risk is securing a permanent venue to deliver our services. Currently, we rent space from Groundwork UK, which has provided a vital base. However, establishing a dedicated, permanent space remains a key priority. Funding received in 2023/24 represents important progress towards achieving our goal of an Incredible Home, enabling us to operate full-time and provide expanded support to the families who depend on our services. These proactive measures and long-term strategies demonstrate our commitment to addressing challenges and ensuring the sustainability of our services for the families we serve.



# Our finances

## Financial Sustainability and Progress

In our commitment to maintaining financial sustainability, we have continued to explore innovative solutions to secure and diversify our income. One of our key initiatives has been a collaboration with other organisations to identify alternative income streams. This has highlighted corporate donations as a promising area for development, complementing our existing focus on community fundraising and events.

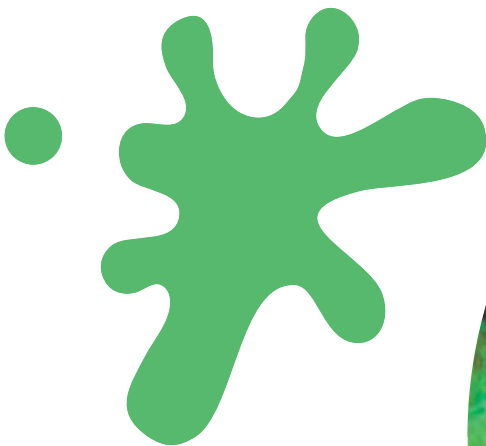
Additionally, the introduction of a micro-volunteering scheme has encouraged small-scale fundraising contributions, offering a flexible and accessible way for supporters to contribute. These efforts, alongside our established fundraising strategies, are laying the foundation for greater financial resilience in the face of ongoing challenges in the fundraising landscape for small charities.

## Income and Expenditure

In 2023/24, Incredible Kids' total income was £118,560, an increase from the previous year. Our income from donations, grants, and community support remained strong and consistent.

Expenditure for the year totalled £118,908, reflecting the investment of a grant received shortly before the end of the prior financial year. Key areas of expenditure included:

- Projects providing cost of living support to families making a real difference on the ground.
- Strong playworker presence at our sessions to enable families to feel supported to attend our sessions.



## Key Financial Initiatives

This year, we made strides in diversifying our income and strengthening our operations:

- Beginning new weekday sessions for out of school children.
- Planning increased community fundraising events such as our Christmas Disco.
- Micro-Volunteering: This new scheme encouraged supporters to engage in small-scale fundraising, building a community-wide sense of involvement.
- Our successful Amazon Wishlist continues to be a supporter led success.

## Reserves Policy and Future Plans

We continue to hold three months' worth of unrestricted reserves to protect against financial uncertainty and safeguard service delivery. Additionally, £55,768 remains earmarked for our goal of securing a permanent venue, an ambition that will enable us to expand and enhance our services.

## A Year of Generosity

The financial support from our community and funders has been pivotal in navigating this challenging year. A special thank you goes to all our supporters—big and small—who have shown incredible generosity in responding to the challenges and opportunities faced by Incredible Kids.

As we look ahead, we remain committed to strengthening our financial position, exploring new opportunities, and ensuring that every pound is invested in delivering vital support to disabled children, young people, and their families.



# Trustee Sandie Davis left an incredible legacy

From the very beginning, Sandie Davis offered wisdom, encouragement, and support in abundance. Whilst visiting with many of her children, grandchildren and foster children Sandie believed that what we did made a difference.

After another local charity stopped providing support to families, Sandie cared about the injustice suffered by local families with disabled children and fought to try to change that.

Sandie joined Incredible Kids as a trustee in 2017, a pivotal year that marked our journey towards securing a permanent dedicated home—a goal we've pursued since we first served a cup of tea and a warm welcome to families in need.

Sandie was diagnosed with Stage 4 pancreatic cancer and her passing on 10th June 2024 deeply affected us all. In celebration of her 70th birthday in May, she initiated an Incredible Kids fundraiser through JustGiving. Her legacy continues to positively impact our community.

## Sandie raised £1,247 for Incredible Kids

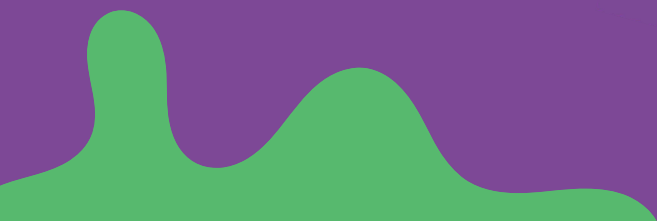




## Incredible donors

Thank you to all of our funders, donors, supporters and every single member of Incredible Kids who donates to us!

Thank you!  
You're  
Incredible



# Our charity's purposes and aims

Incredible Kids provides play and support services to families with a child or young person with a disability or additional need to strengthen and support family life, reduce inequality and social isolation. Activities include daytime family play sessions for young people with additional needs and their siblings in a safe, supported environment alongside advice and support for parent-carers.

Our charity's purposes are set out in the objects contained in the Charity's Constitution:

1. THE RELIEF OF CHILDREN WITH ADDITIONAL NEEDS; AND

2. PROVIDING RELIEF AND RESPITE TO THE FAMILY AND CARERS OF THE CHILDREN; THESE OBJECTS SHALL BE FURTHERED IN PARTICULAR BUT NOT EXCLUSIVELY BY:

A) PROVIDING CARE FOR THE CHILDREN AND PROVIDING OPPORTUNITIES FOR THEM TO SOCIALISE AND PLAY TOGETHER; AND

B) ALLOWING PARENTS AND CARERS TO TAKE A SHORT BREAK FROM THE PRESSURES OF EVERYDAY LIFE AND ENCOURAGING A MUTUALLY SUPPORTIVE ENVIRONMENT FOR PARENTS AND CARERS.

WE DEFINE THOSE WITH ADDITIONAL NEEDS AS CHILDREN AND YOUNG PEOPLE WHO HAVE A PHYSICAL, SENSORY, COMMUNICATION, BEHAVIOURAL OR LEARNING DIFFICULTY, OR HAVE A LONG TERM/LIFE LIMITING CONDITION

Our organisation provides an inclusive and welcoming space with specialist toys and equipment that meet the children's needs. It enables them to play, have fun, and make new friends, and is a place where children, their siblings, and parents/carers alike can come together for acceptance, mutual support, and a sense of belonging. We provide a range of support for the whole family, including:

- Family play sessions for children and young people with additional needs, delivered by specially trained playworkers who engage the children in fun and meaningful play.
- Family play sessions for siblings of children and young people with additional needs, which helps improve understanding and the wellbeing of the whole family.
- Provision of training and support to parents/carers to help increase their knowledge and resilience in their ability to parent and access specialist services.
- A series of special events each year for families to attend.

We refer to the guidance contained in the Charity Commission's general guidance on public benefit when reviewing the charity's aims and objectives and in planning its activities for the following year.

Our governing document is our Incredible Kids 'Foundation' model Constitution.

# Trustee skills and selection method

Our Board of Trustees keep the skills required of the Board under review throughout the year. In the event that a trustee retires or additional trustees are required, the Board considers the recruitment of new trustees. When recruiting new trustees, the Board looks for individuals with skills and experience which are likely to be of value to the charity. If there is likely to be support for an applicant, initial contact will be made with the individual to ascertain both their suitability and their interest in a vacancy. Any new trustee is formally appointed by the Trustees.

During 2023/24 Incredible Kids did not recruit any new trustees. Three trustees resigned from Incredible Kids due to increased work commitments. Our Trustee Sandie sadly died shortly after the year end this report relates to. Trustees have a background in marketing, financial investments, finance and accounting and public sector leadership. Three of the 2023/24 trustees are service users with direct experience of the issues faced by families at Incredible Kids. Incredible Kids undertook a period of trustee recruitment to identify two new trustees and the process was ongoing as at the year end.

When selecting trustees, the charity has due regard for the skills, knowledge and experience needed for the effective administration of the CIO. New trustees are appointed by existing trustees. Apart from the first trustees, all trustees are appointed for a term of three years. Trustees may be appointed for a maximum of three, three years terms after which they must take a break for at least one year.

All Trustees are required to share the Christian faith. All other roles within the charity are open to those of any faith or no faith and volunteers agree to our Incredible Values of selflessness, honesty and accountability.

The Board of Trustees is responsible, from time to time, to appoint new trustees. As far as possible the charity aims to promote available roles as widely as possible, seeking out a range of sources to ensure we find the best people for the role. Three of our trustees are service users and two of our senior leadership team have a disability so we have strong beneficiary representation on the Board.

## Policies and procedures adopted for the induction and training of trustees

The charity reviews recruitment, policies and procedures for training and appointing new trustees during each year. All trustees complete an application form, undertake an Enhanced Adult and Child DBS check, provide two references and are interviewed by a panel from the charity. All trustees receive a copy of the trustee handbook and undertake a thorough trustee induction.



## Statement of trustees' responsibilities

The trustees are responsible for preparing the Trustees' Report and the financial statements in accordance with applicable law and United Kingdom Accounting Standards including Financial Reporting Standard 102: The Financial Reporting Standard applicable in the UK and Republic of Ireland (United Kingdom Generally Accepted Accounting Practice).

The law applicable to charities in England & Wales/Scotland/Northern Ireland requires the trustees to prepare financial statements for each financial year which give a true and fair view of the state of affairs of the charity and of the income and expenditure of the charity for that period. In preparing these financial statements, the trustees are required to:

- select suitable accounting policies and then apply them consistently;
- observe the methods and principles in the Charities SORP;
- make judgments and accounting estimates that are reasonable and prudent;
- state whether applicable UK Accounting Standards have been followed, subject to any material departures disclosed and explained in the financial statements; and
- prepare the financial statements on the going concern basis unless it is inappropriate to presume that the charity will continue in business.

The trustees are responsible for keeping sufficient accounting records that disclose with reasonable accuracy at any time the financial position of the charity and enable them to ensure that the financial statements comply with the Charities Act 2011, the Charity (Accounts and Reports) Regulations 2008 and the provisions of the trust deed/constitution. They are also responsible for safeguarding the assets of the charity and hence for taking reasonable steps for the prevention and detection of fraud and other irregularities.





Incredible  
Kids

## Incredible Trustees

- Jennie Prewett (Chair)
- Dominic Fletcher
- Jai Breitnauer
- Nigel Willoughby (Resigned 31/7/2023)
- Brendan Clover (Resigned 9/4/2023)
- Laura Butler (Resigned 31/8/2023)
- Sandie Davis

Incredible Kids registered as a charity on 11th March 2013 as a Charitable Incorporated Organisation. Our governing document is our Incredible Kids 'Foundation' model Constitution. Charity Registration Number 1151185.

## Declarations

The Incredible Kids trustees declare that they have approved the trustees report above on the 1st January 2025.

Jennie Prewett, Dominic Fletcher and Jai Breitnauer. Signed on behalf of the charity's trustees.

Email: [contact@incrediblekids.org.uk](mailto:contact@incrediblekids.org.uk)

Website: [incrediblekids.org.uk](http://incrediblekids.org.uk)

Address:

Incredible Kids  
C/O The Vench  
Romney Avenue  
Lockleaze  
Bristol, BS7 9TD



Annual report  
2023-2024

**Incredible Kids**  
Registered Charity 1151185

**Statement of Financial Activities to 31st March 2024**

The following accounts have been prepared in accordance with the Statement of Recommended Practice (SORP) issued by the Charity Commission to comply with the Executive Committee's obligations as the trustees of the Charity for keeping accounting records

	2024	2024	2023	2023
	£	£	£	£
<b>Income</b>				
<b>Subscriptions &amp; Donations</b>				
Donations & Legacies	12,340.05		14,504.78	
<b>Grants</b>				
Restricted	2	53,530.00	47,605.00	
Unrestricted		46,689.05	45,250.00	
Interest Received		6,000.94	1,842.07	
<b>Total Income</b>		<u>118,560.04</u>	<u>109,201.85</u>	
<b>Expenditure</b>				
<b>Direct Charity</b>				
Rent & Rates		23,553.15	18,462.82	
Insurance		512.87	530.70	
Fundraising Costs		149.07	6,536.50	
Advertising/Promotional		647.65	2,802.84	
Training		958.09	1,088.40	
Office/Administration Costs		3,852.67	1,379.81	
Purchases		29,449.75	18,575.09	
Payroll Expenditure		54,798.21	61,760.62	
Volunteer Costs			114.15	
<b>Total Direct Charity Costs</b>		<u>114,121.46</u>	<u>111,250.93</u>	
<b>Other Costs</b>				
Service Costs			282.00	
Legal & Professional		4,359.65	3,244.62	
Courier Costs		270.00	703.95	
Bank Charges		63.50	77.00	
Depreciation		93.23	93.23	
<b>Total Other Costs</b>		<u>4,786.38</u>	<u>4,400.80</u>	
<b>Total Expenditure</b>		<u>118,907.84</u>	<u>115,651.73</u>	
<b>Surplus/Deficit</b>		<u>(347.80)</u>	<u>(7,959.71)</u>	
<b>Funds B/Fwd</b>		<u>334,202.76</u>	<u>342,162.47</u>	
<b>Total Funds</b>		<u>333,854.96</u>	<u>334,202.76</u>	
<b>Funded By:</b>				
Fixed Assets		49,871.22	50,243.60	
Current Account		6,414.29	19,878.80	
Gold Account Restricted		255,768.98	249,360.10	
Refreshments Account		9,689.92	3,443.15	
Donations Account		13,461.88	12,927.84	
Paypal		(1,832)	(1,942)	
Debtors		358.07	368.07	
Creditors		(28)	(217)	
Other Assets		140.25	140.25	
<b>Total Funds Carried Forward</b>		<u>333,854.96</u>	<u>334,202.76</u>	

**Notes to the Accounts**

1. The accounts are prepared on a receipts and payments basis and no account has been taken of accrued/prepaid income or expenditure
2. Detailed Restricted Income/Expenditure report attached

## Incredible Kids Restricted Funding Statement @ 31st March 2024

	Feeding Bristol	Filton Town Council	Garfield Weston	John James	National Grid	Nespresso	Resilience	SGC	SGC	Groundwork	Wessex Water	TOTAL
Income												
Donations and legacies												
General Donations												
Grants - Restricted	5,000.00	5,000.00	10,000.00	1,700.00	7,730.00	3,000.00	10,000.00	5,500.00	1,100.00	3,750.00	750.00	53,530.00
Grants - Unrestricted												
<b>Total</b>	<b>£ 5,000.00</b>	<b>£ 5,000.00</b>	<b>£ 10,000.00</b>	<b>£ 1,700.00</b>	<b>£ 7,730.00</b>	<b>£ 3,000.00</b>	<b>£ 10,000.00</b>	<b>£ 5,500.00</b>	<b>£ 1,100.00</b>	<b>£ 3,750.00</b>	<b>£ 750.00</b>	<b>£ 53,530.00</b>
Total Expenditures	£ 5,000.00	£ 10,000.00	£ 10,000.00	£ 6,216.85	£ 7,730.00	£ 3,000.00	£ 10,000.00	£ 5,500.00	£ 1,100.00	£ 4,875.00	£ 750.00	£ 59,171.85
Net Operating Income	£ 0.00	£ 0.00	£ 0.00	£ (€4,516.85)	£ 0.00	£ 0.00	£ 0.00	£ 0.00	£ 0.00	£ (€1,125.00)	£ 0.00	£ (€5,641.85)

**Independent Examiners Report to the Trustees of Incredible Kids  
Respective responsibilities of Trustees and Examiner**

The charity's trustees are responsible for the preparation of the accounts. The charity's trustees consider that an audit is not required for this year under section 144 of the Charities Act 2011 (the charities act) and that an independent examination is needed.

It is my responsibility to:

- examine the accounts under section 145 of the Charities Act
- to follow the procedures laid down in the general Direction given by the Charity Commission (under section 145(5)(b) of the Charities Act) and
- to state whether particular matters have come to my attention

**Basis of Independent examiners statement**

My examination was carried out in accordance with general directions given by the Charity Commission. An examination includes a review of the accounting records kept by the charity and a comparison of the accounts presented with these records. It also includes consideration of any unusual items or disclosures in the accounts, and seeking explanations from the trustees concerning any such matters. The procedures undertaken do not provide all the evidence that would be required in an audit, and consequently no opinion is given as to whether the accounts present a 'true and fair' view and the report is limited to those matters set out in the statement below.

**Independent Examiners Statement**

In connection with my examination, no matter has come to my attention:

1. which gives me reasonable cause to believe that in, any material respect, the requirements to keep accounting records in accordance with section 130 of the Charities Act to prepare accounts which accord with the accounting records and comply with the with the accounting requirements of the Charities Act have not been met; or
2. to which, in my opinion, attention should be drawn in order to enable a proper understanding of the accounts to be reached.

Michael J Bowles



M J Bowles  
MJB Accounting Ltd  
28th January 2025

*Jennie Prewett*

Jennie Prewett  
Incredible Kids  
Founder / Trustee  
29th January 2025

**INCREDIBLE KIDS**

England & Wales - Charity number 1151185

---

# Accounts

---

# Incredible Kids

## 2022-2023



Registered charity 1151185

▶ [incrediblekids.org.uk](https://incrediblekids.org.uk)



Inclusive play ● Family support ● Improving wellbeing

For families in Bristol that have young people with additional needs and disabilities

## A note from our Incredible Trustees

This year's cost-of-living crisis impacted the families we support and affected the costs of the service we provide. Alongside increasing costs, the fundraising environment has become more challenging. Costs for everything we use at our sessions have increased and we felt it was important to raise the rate of pay for our playworkers to ensure they were well supported. All of this resulted in a challenging environment for Incredible Kids but our volunteers and staff have responded with resilience and creativity. We have all focused on ensuring that we provide as much support as possible to our members.

We created wellbeing packs filled with hot water bottles and sensory friendly blankets and these went down a storm. We introduced free tickets for those who were struggling to afford to visit, making sure that Incredible Kids is as accessible as we can make it.

The number of Incredible Kids members continued to rise with 910 new members this year, a testimony to the service our playworkers provide as well as the ever-growing need for inclusive play sessions in the face of cuts to other support services and school support. As trustees, we will continue to do all we can to support everyone at Incredible Kids.

**Incredible Kids provides a lifeline for young people and their families in Bristol.**





"Incredible Kids has given my daughter a safe space to release energy and tension. She can be her true self without being judged."





## Our achievements 2022-2023

2022/23 was extra special for Incredible Kids. It was our 10th birthday and we were delighted to be given the Queen's Award for Voluntary Service.

With thanks to our funders we've been able to pay passionate playworkers who dedicate their weekends to supporting families to relax and have fun in a safe and inclusive environment. To pay for the use of The Vench Adventure Playground, provide hot meals and create welcome packs jam-packed with SEND-related tips and advice and book brilliant professional entertainers.

Our membership reached 3110 this year. We're over the moon to have welcomed 910 new parents and carers and young people into our community in 2022 alone. These are families who have signed up to attend one of our inclusive play sessions – that's a 37% increase in the number of families who Incredible Kids support in some way.

### What did we offer in 2022/23?

As we did throughout the global pandemic, in 2022 we tried to offer as much support and fun as we could. In fact, we ran more than 300 sessions, totalling 468 hours! Throughout the year we offered families their choice of indoor or outdoor play with plenty of space or social interaction to suit individual needs.

### Incredible Saturdays

Every single Saturday in 2022 we offered 4 play sessions, including Christmas Eve and New Year's Eve. We regularly made Saturdays extra special by booking professionals in play such as lego parties, face painters, enigmatic actors and bubbleologists.

## Summer holiday support

In summer, we provided extra midweek support in Patchway Children's Centre on top of our usual Friday and Saturday play sessions at The Vench in Lockleaze.

## Incredible Girls

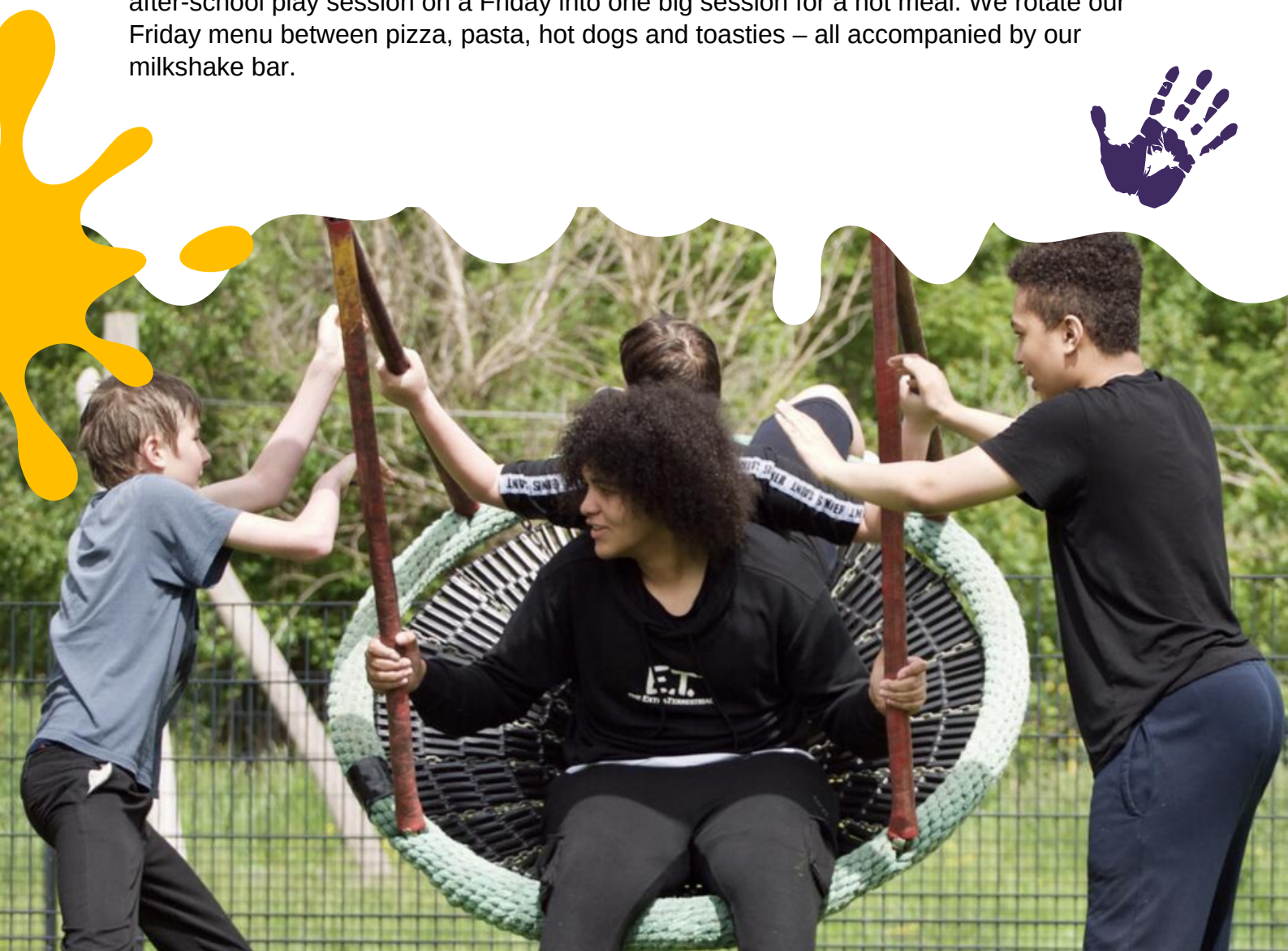
We want to help girls with additional needs forge friendships. On the first Saturday of the month, our play sessions were dedicated to girls with additional needs aged 0-25 and their families. Our passionate playworkers supported girls in whatever they fancied doing – crafts, climbing, trampoline, sandpit or simply a natter over tea and biscuits.

## PDA Support Sessions

On the last Saturday of the month, we dedicated a play session to young people with Pathological Demand Avoidance (PDA) symptoms. PDA is a form of anxiety-driven autism. This session offers families a chance to meet families with similar experiences.

## Incredible Fridays

Towards the end of 2022 we chose to combine our Incredible Teens session and our after-school play session on a Friday into one big session for a hot meal. We rotate our Friday menu between pizza, pasta, hot dogs and toasties – all accompanied by our milkshake bar.





## SEND advocacy

Alice from SEND Advocacy Limited joined us regularly to answer our members SEND-related questions. Alice practiced as a Barrister specialising in civil litigation for almost a decade before focusing on SEND law and practice. Incredible Kids families were able to book Alice for a free 15-minute one-to-one chat.

## Incredible Christmas

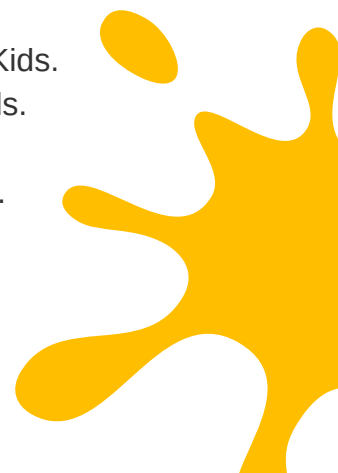
We couldn't round off such a year without a fuss for our families. Our playworkers held a Dr. Seuss-themed Christmas party included handmade decorations from playworkers. Santa and his helper visited and we transformed our sensory room into a grotto complete with sensory toys and selection boxes for Santa to give our young people with additional needs.



## Our impact

We surveyed our members to find out what impact we made in 2022/23.

- 100% of families told us their children had tried new things at Incredible Kids.
- 96% of families felt less isolated as a result of Incredible Kids.
- 98% of families said their child had fun at Incredible Kids.
- 98% of families said our playworkers helped their child to have fun.
- 91% of families said their child felt more confident because of Incredible Kids.
- 96% of families said their children were happier because of Incredible Kids.
- 73% of families said Incredible Kids helped them access other support.
- 100% of families said Incredible Kids helped them to get out of the house.
- 91% of families said Incredible Kids had helped them to cope.
- 98% of families look forward to coming back to Incredible Kids.
- 98% of families would recommend Incredible Kids.





## Our Incredible team

Incredible Kids has a dedicated team of specially trained playworkers, a service manager and over 40 parent-volunteers.

Incredible Kids has a board of six trustees with skills in public sector accounting, financial planning, charity marketing, IT and Local Government leadership. Three of our trustees are users of the charity's services and understand the impact disability has on a family. The board meets quarterly and are in touch with senior staff on a regular basis about the day-to-day running of the service.

Each session is designed by our Service Manager and Senior Playworkers. Each session aims to meet the needs of our families, based on their feedback. We have a minimum of 4 playworkers on site for 30 children, supported by the Service Manager.

Our Service Manager has built trust and rapport with families, offering a unique and heart-felt approach to engagement and inclusion, ensuring that no child or family is excluded. The role provides hands-on leadership and has enabled us to improve our service.

Our team of playworkers were chosen for their experience, sensitivity, kindness and generosity of spirit. They are all DBS checked and are offered regular training to ensure their knowledge and practice provides the best quality service to children and families.

We have a network of dedicated and supportive parent-volunteers who feel invested in the service and are a valued part of its running and peer mentoring. They are supportive and welcoming and make the setting a warm and supportive place to be. These networks of valued volunteers with real lived experience and highly trained and experienced staff ensure that sessions are successful and achieve what they set out to do.

**We are the only organisation in Bristol to offer in-person parent support and play sessions specifically for disabled children and young people, every week, all year round.**





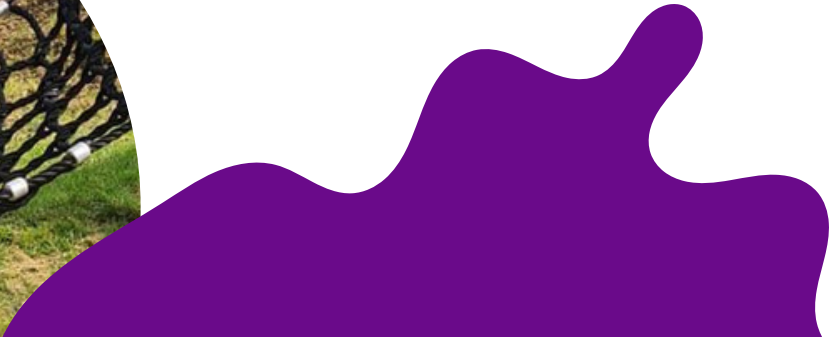
## What we do

### We provide a service where...

- children and young people with disabilities **engage in play** with their parents and carers
- **siblings** of children with additional needs have a space to play and be valued in their own right
- children have access to **specialist equipment** and toys
- **parents and carers access support** and signposting
- parents and children have the opportunity for ownership through **volunteering** and participation
- families become part of a **mutually supportive community**

### How we work

- We are a **grassroots charity** where our families are at our core
- We respond quickly to **change**
- We **understand our families'** needs
- Work in **highly creative** ways to support families
- We test new projects and ideas our members or staff suggest
- Work with a **multi-agency approach** to provide bespoke support to families
- We make a difference to members' lives by creating a **mutually supportive environment**
- We **value member voices** and provide continual opportunities for feedback



# Queen's Award for Voluntary Service

Back in January, we were honoured to welcome HM Lord Lieutenant Peaches Golding and Lee Williams DL to present us with our award for voluntary services. We celebrated with a silent disco and shared a magnificent donated cake from Free Cakes For Kids Bristol. We were delighted to be reunited with past Incredible Kids volunteers who joined us to receive the award.

Incredible Kids was created by parents in Bristol when they lost access to a local disability centre. Incredible Kids Founder and mum of 6, Jennie Prewett, decided to encourage families to gather in a local church instead. Soon enough, families brought toys, baked cakes and created a safe, supportive space for their families and disabled young people to connect and have fun. 10 years and a global pandemic later, we're at Buckingham Palace!

Incredible Kids was created by volunteers and is still led by volunteers. From welcoming families, capturing wonderful moments with a camera, to baking cakes – our volunteers are doing it with a smile. If you have given your time to Incredible Kids over the last decade – THANK YOU! The Queen's Award for Voluntary Service is your award.

Incredible Kids past volunteer, Eve, shared her experience:

**"I loved being able to volunteer my time to help families and their children. I love the atmosphere at Incredible Kids. We all cared for each other. It was amazing being able to give each child the attention they needed and give them a safe and fun environment to play in."**



# Incredibly Inclusive



'Providing support to the whole family of a disabled child can lead to better educational outcomes' – Department for Education

Everyone is welcome, accepted and understood at Incredible Kids. Diversity, equity and inclusion can take many forms and we continually seek out ways to ensure as many people as possible join, visit and enjoy our service. We already have a very broad membership, and work with a variety of other organisations to reach parent/carers from other communities.

We have a diverse playworker team who reflect the backgrounds and additional needs or life experiences of many of our members. We have a strong reputation for listening to members and offering multiple opportunities to provide feedback. We know our community is constantly changing and seek to make sure we are always updating our processes to successfully meet their needs.

We offer themed sessions, to help support those in the community who want to connect over common ground, and we also make our regular sessions welcoming and available to everyone. We try out new projects as new needs are made known to us and operate a highly flexible service. Our themed sessions include the following:

## **Quiet Session**

A morning play session with reduced numbers for those who need a calmer space

## **Pathological Demand Avoidance Autism Support Sessions**

A monthly session for young people with an anxiety-driven form of autism

## **Incredible Under 8s**

A session aimed at providing early help and a safe space for younger children

## **Incredible Teens**

A session aimed at teenagers with additional needs

## **Incredible Girls**

Families told us that there's a lack of provision for girls with additional needs so we created a monthly session dedicated to supporting girls in forging friendships

## **Incredible New families**

An induction play session aimed at encouraging new families to visit our sessions and welcome them into our community

We have an accessible venue, and wheelchair-accessible tuff tray, and we also ensure our activities are adapted to meet all ages and abilities. We are very active on social media and ensure that our social media and publicity reflects the diverse backgrounds and needs of those who visit us. We have recently been contacting schools that represent underrepresented groups at our sessions to ensure we reach as many people as possible. We also offer free places for low-income families. Our members report our sessions are a place of freedom.





A recent project called **Include All Incredible Kids** involved a combination of online administrative work and in-person work at our sessions. After recognising that some people found it hard to complete our online form, admin staff created a paper copy of our form which could be downloaded and returned to us. Staff members worked directly with organisations and individuals to respond to families and professionals requesting more support with the process of becoming a member of Incredible Kids.

Our admin staff give extra support with our membership process if a family's first language is not English. Staff spend more time communicating with these families, gathering small details with each interaction until we help them through the process.

For those with young people with complex disabilities, our admin staff and service manager often spent time communicating with the families to help them feel confident that our sessions are right for them and that the activities are be suitable for their child. We often personalise activities for children based on these conversations and introduce new activities to help those new young people be able to access the service.

We also visited a number of organisations directly to talk to parent/carers in order to encourage them to join. We first identified our under represented groups, which included asylum seekers and children and young people from Profound and Multiple Learning Disabilities (PMLD) specialist schools. Our service manager visited organisations from these under represented groups at their parent/carer sessions to tell parents about our service and help them sign up in person.

"I was so inspired by all your team are doing for children and families who are only asking to be believed, understood and supported so they can be the best parent and carers possible. Thanks goodness for Incredible Kids. You know you're life-savers. Several families told me that, thanks to you, they have just a window of a haven where they can relax, their children can relax and where life is just a little bit easier."

– Alex Ardalan-Raikes MBE DL, High Sheriff of Bristol





# Incredible Partnerships

Incredible Kids welcomes the opportunity to work in partnership with other SEND support organisations and other compatible services in the area. We work with other organisations strategically and operationally and with agencies across the public, private and voluntary sectors.

As an independent charity we exist primarily to support our members for the public benefit to provide support to young people with additional needs and their families. We seek out opportunities to work collaboratively with other organisations who share those aims or further them. We have collaborated with many local SEND organisations over the past ten years.

We've worked closely with **Bristol Autism Support** and refer families to each other regularly host local Special Education Needs and Disability Information and Advice Service (SENDIAS) support and other organisations that offer SEND advice to families and young people.

We've worked with **Neon Daisy**, a charity that supports autistic girls. We've collaborated with them to deliver a new session at Incredible Kids to support girls with additional needs.

We've created a welcome pack for our families, signposting them to a range of other organisations in the local area to ensure they are well-supported by as many services as possible (not just us!).

We've organised a conference for 200 parents in conjunction with our local parent/carer forum.

We've hosted a talk on Pathological Demand Avoidance with a local education psychologist.

We've hosted sessions with **Tourettes Action** for young people with Tourettes Syndrome.



# Incredible hugs in a bag



We held a wellbeing day and gave out bags filled with sensory-friendly blankets, fluffy hot water bottles and treats. Lush donated a little gift to each family, too. These packs aimed to help keep families warm during the cost-of-living crisis, help them feel supported and most of all, make them smile. We hope to make more of these later in 2023. We are so grateful to everyone at Quartet Community Foundation who made our wellbeing day possible. Some of our bags had seed packs donated by Suttons Seeds (if you grow yours, do send us a picture of what emerges!). We hope that these bags will bring some much-needed comfort and joy to our incredible families.

Our fun wellbeing day was filled with all sorts of exciting activities, including face painting, and even some bubbleology! Our bubbleologists Rainbow Gecko returned to wow the crowds with their incredible bubble-making skills. They created giant bubbles that floated high up into the sky. Families enjoyed homemade cakes from Incredible Baker Alice as well as relaxing herbal teas and cookies.

For families like Jo whose son has additional needs, the wellbeing bags have been a great source of comfort. "Oh my goodness, we had such a lovely day!" said Jo. "The best bubbles and face painting ever. My son loved the blanket and the microwavable fluffy dog in the wellbeing pack."

Founder of the charity Jennie Prewett said, "We hope these bags bring a little bit of joy to our families. The days may be warming up as spring arrives but the sensory-friendly blankets in the packs will bring comfort all year round. We designed them to be like a giant hug inside a bag!"





# An Incredible Christmas

2 Christmas parties in 2022



Christmas is an important time of year to all of us at Incredible Kids. We want everyone to be included in the festivities, so we hosted two parties – a quiet one with less people and a lively party. We had a silent disco and grotto where Santa gave out gifts.



## K's experience

"It was our first visit [to Incredible Kids and my autistic daughter loved it. She felt really relaxed and so did we. I was really impressed with the staff they were very knowledgeable and friendly."

– New family who and rated their experience with 5 stars



# Public benefit



In setting our objectives and planning our activities, our Trustees have given careful consideration to the Charity Commission's general guidance on public benefit. This report outlines how our performance during the year has benefitted the public.

## Contribution made by volunteers

Established in 2012 by parents and dedicated volunteers, Incredible Kids places a strong emphasis on the pivotal role played by our volunteers. Many of these volunteers are also beneficiaries of our charity, underscoring our commitment to actively involve parents and carers in our volunteering efforts. Nothing demonstrates the incredible impact of our volunteers more than the receipt of the Queens Award for Voluntary Service.

Throughout the past year, our volunteers remained instrumental in providing essential support, allowing us to operate amidst ever-changing restrictions. With regulations on numbers fluctuating frequently, our volunteers adapted and revamped our booking system. The introduction of our online management system, facilitated by volunteers, not only streamlined our operations but also enhanced the coordination of novel working approaches.

The contribution of our Incredible Bakers brought moments of joy as they delivered delectable treats for the children. In parallel, new volunteer playworkers, including those on placements from local universities, joined our ranks. Our management team provided support to these individuals, aiding them in constructing portfolios that documented their experiences with us. Several of these volunteers have transitioned into long-term roles within our playworker team, experiencing personal development in their career paths for the future.



# Risk

The Trustees maintain an organisational risk assessment and consider this regularly at Trustee meetings. The risk strategy identifies the core risks the charity faces, the likelihood of each risk occurring, the impact of each risk should it occur and then an overall risk score for each risk. This shows trustees the main areas of risk that they should develop systems to mitigate.

The principal risk facing the charity under current circumstances is the risk of being unable to secure sufficient funds to run our service. 2022/23 was a challenging year for Incredible Kids and our volunteer fundraisers worked hard to secure sufficient funds to operate our service. Trustees have recognised the challenging circumstances under which charities are operating and have actively increased our level of fundraising undertaken by volunteers.

Another significant risk facing Incredible Kids is in relation to the provision of a venue from which to operate. Incredible Kids rents space from Groundwork UK and is actively pursuing a dedicated space from which to operate full time and the funding received towards this goal in 2022/23 is welcome progress towards securing our Incredible Home. During the year Incredible Kids actively bid for a building in Bristol but unfortunately the bid was not successful so we continue to identify alternative suitable spaces.

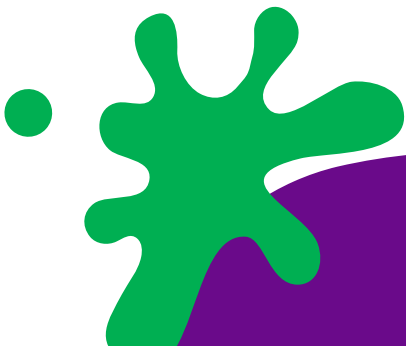


# Our finances

Incredible Kids volunteers dedicate considerable efforts to fundraising and identifying diverse funding sources to sustain our crucial initiatives. Our financial support encompasses session fees, monthly memberships, and community fundraising. Our community showed immense support, contributing approximately £14,000, illustrating a robust backing for our mission.

Our committed staff and volunteers seamlessly integrated fundraising into our social media platforms, introducing innovative approaches to garner support. In addition to holding three months' worth of unrestricted reserves, we maintain a designated reserve of £249,360. This reserve is earmarked for acquiring a permanent premises, a goal that remains central to our mission. While actively exploring potential locations in Bristol, securing a new venue would not alter our services but would lead to expansion.

Operating costs have increased, with expenses for our session resources doubling. The adventure playground rent rose by 10%, with expectations of further increases. Responding to the cost-of-living crisis, we increased wages for playworker and administrative staff. The 2020 lockdown resulted in a doubling of our membership and increased demand for our services, necessitating additional staff. Consequently, our fundraising efforts intensified, involving proactive grant applications. Recognising the challenging landscape for small charities, we strategically plan to diversify income streams, ensuring our resilience and innovation in these testing times.



In our ongoing commitment to financial sustainability, we've initiated a project in collaboration with the Cranfield Trust. This venture aims to explore alternative avenues for income diversification, crucial in the face of the increasingly challenging fundraising landscape for small charities over the past year. Corporate donations present a potential area for development, aligning with our focus on community fundraising and events. Introducing a micro-volunteering scheme has been a strategic move to encourage small-scale fundraising contributions. We believe that these initiatives, alongside our established efforts, will play a pivotal role in securing the necessary funds to support our mission.

Incredible Kids total income was £109,792 in 2022/23, reduced from the previous year which last year included **£247,494 from a one off legacy donation set aside for our search for an incredible permanent home for the charity.** Donations from our generous members remained at a similar level from the previous year.

Overall, our expenditure against this cost was £117,367 due to planned expenditure from a grant received shortly before the end of the previous financial year. We ran a successful summer pop-up which increased our staffing costs and session activity costs but provided an additional lifeline to families at a time when they most need support. We increased our staff team this year thanks to a resilience grant from Quartet, enabling us to recruit part time staff to support finance and marketing.

This was an exciting year for Incredible Kids. A special thank you goes to our funders (big and small), who responded to our service's challenges and opportunities with Incredible generosity.



## Incredible donors

Thank you to all of our funders, donors, supporters and every single member of Incredible Kids who donates to us!

**Thank you!**  
**You're**  
**Incredible**



# Our charity's purposes and aims

Incredible Kids provides play and support services to families with a child or young person with a disability or additional need to strengthen and support family life, reduce inequality and social isolation. Activities include daytime family play sessions for young people with additional needs and their siblings in a safe, supported environment alongside advice and support for parent-carers.

Our charity's purposes are set out in the objects contained in the Charity's Constitution:

1. THE RELIEF OF CHILDREN WITH ADDITIONAL NEEDS; AND

2. PROVIDING RELIEF AND RESPITE TO THE FAMILY AND CARERS OF THE CHILDREN; THESE OBJECTS SHALL BE FURTHERED IN PARTICULAR BUT NOT EXCLUSIVELY BY:

A) PROVIDING CARE FOR THE CHILDREN AND PROVIDING OPPORTUNITIES FOR THEM TO SOCIALISE AND PLAY TOGETHER; AND

B) ALLOWING PARENTS AND CARERS TO TAKE A SHORT BREAK FROM THE PRESSURES OF EVERYDAY LIFE AND ENCOURAGING A MUTUALLY SUPPORTIVE ENVIRONMENT FOR PARENTS AND CARERS.

WE DEFINE THOSE WITH ADDITIONAL NEEDS AS CHILDREN AND YOUNG PEOPLE WHO HAVE A PHYSICAL, SENSORY, COMMUNICATION, BEHAVIOURAL OR LEARNING DIFFICULTY, OR HAVE A LONG TERM/LIFE LIMITING CONDITION

Our organisation provides an inclusive and welcoming space with specialist toys and equipment that meet the children's needs. It enables them to play, have fun, and make new friends, and is a place where children, their siblings, and parents/carers alike can come together for acceptance, mutual support, and a sense of belonging. We provide a range of support for the whole family, including:

- Family play sessions for children and young people with additional needs, delivered by specially trained playworkers who engage the children in fun and meaningful play.
- Family play sessions for siblings of children and young people with additional needs, which helps improve understanding and the wellbeing of the whole family.
- Provision of training and support to parents/carers to help increase their knowledge and resilience in their ability to parent and access specialist services.
- A series of special events each year for families to attend.

We refer to the guidance contained in the Charity Commission's general guidance on public benefit when reviewing the charity's aims and objectives and in planning its activities for the following year.

Our governing document is our Incredible Kids 'Foundation' model Constitution.

# Trustee skills and selection method

Our Board of Trustees keep the skills required of the Board under review throughout the year. In the event that a trustee retires or additional trustees are required, the Board considers the recruitment of new trustees. When recruiting new trustees, the Board looks for individuals with skills and experience which are likely to be of value to the charity. If there is likely to be support for an applicant, initial contact will be made with the individual to ascertain both their suitability and their interest in a vacancy. Any new trustee is formally appointed by the Trustees.

During 2022/23 Incredible Kids did not recruit any new trustees and our trustee Board remained at six trustees. Trustees have a background in marketing, financial investments, finance and accounting and public sector leadership. Three of the trustees are service users with direct experience of the issues faced by families at Incredible Kids. Incredible Kids undertook a period of trustee recruitment to identify two new trustees and the process was ongoing as at the year end.

When selecting trustees, the charity has due regard for the skills, knowledge and experience needed for the effective administration of the CIO. New trustees are appointed by existing trustees. Apart from the first trustees, all trustees are appointed for a term of three years. Trustees may be appointed for a maximum of three, three years terms after which they must take a break for at least one year.

All Trustees are required to share the Christian faith. All other roles within the charity are open to those of any faith or no faith and volunteers agree to our Incredible Values of selflessness, honesty and accountability.

The Board of Trustees is responsible, from time to time, to appoint new trustees. As far as possible the charity aims to promote available roles as widely as possible, seeking out a range of sources to ensure we find the best people for the role. Three of our trustees are service users and two of our senior leadership team have a disability so we have strong beneficiary representation on the Board.

## Policies and procedures adopted for the induction and training of trustees

The charity reviews recruitment, policies and procedures for training and appointing new trustees during each year. All trustees complete an application form, undertake an Enhanced Adult and Child DBS check, provide two references and are interviewed by a panel from the charity. All trustees receive a copy of the trustee handbook and undertake a thorough trustee induction.



## Statement of trustees' responsibilities

The trustees are responsible for preparing the Trustees' Report and the financial statements in accordance with applicable law and United Kingdom Accounting Standards including Financial Reporting Standard 102: The Financial Reporting Standard applicable in the UK and Republic of Ireland (United Kingdom Generally Accepted Accounting Practice).

The law applicable to charities in England & Wales/Scotland/Northern Ireland requires the trustees to prepare financial statements for each financial year which give a true and fair view of the state of affairs of the charity and of the income and expenditure of the charity for that period. In preparing these financial statements, the trustees are required to:

- select suitable accounting policies and then apply them consistently;
- observe the methods and principles in the Charities SORP;
- make judgments and accounting estimates that are reasonable and prudent;
- state whether applicable UK Accounting Standards have been followed, subject to any material departures disclosed and explained in the financial statements; and
- prepare the financial statements on the going concern basis unless it is inappropriate to presume that the charity will continue in business.

The trustees are responsible for keeping sufficient accounting records that disclose with reasonable accuracy at any time the financial position of the charity and enable them to ensure that the financial statements comply with the Charities Act 2011, the Charity (Accounts and Reports) Regulations 2008 and the provisions of the trust deed/constitution. They are also responsible for safeguarding the assets of the charity and hence for taking reasonable steps for the prevention and detection of fraud and other irregularities.



## CIO foundation model: 6 Incredible Trustees

1. Jennie Prewett (Chair)
2. Sandie Davis
3. Rev. Brendan Clover (Resigned 5/3/2023)
4. Laura Butler (Resigned 13th July 2023)
5. Dominic Fletcher
6. Nigel Willoughby (Resigned 1st July 2023)

Jai Breitnaur joined as a new trustee on 5th September 2023.

Incredible Kids registered as a charity on 11th March 2013 as a Charitable Incorporated Organisation. Our governing document is our Incredible Kids 'Foundation' model Constitution. Charity Registration Number 1151185.

## Declarations

The Incredible Kids trustees declare that they have approved the trustees report above on the 24th January 2024.

*Jennie Prewett*

Jennie Prewett, Sandie Davis, Rev Cannon Brendan Clover, Laura Butler, Dominic Fletcher, Nigel Willoughby. Signed on behalf of the charity's trustees.

Email: [contact@incrediblekids.org.uk](mailto:contact@incrediblekids.org.uk)

Website: [incrediblekids.org.uk](http://incrediblekids.org.uk)

Address:

Incredible Kids  
C/O The Vench  
Romney Avenue  
Lockleaze  
Bristol, BS7 9TD



Annual report  
2022-2023

## **Independent examiner's report to the trustees of Incredible Kids**

I report to the trustees on my examination of the accounts of Incredible Kids (the Charity) for the year ended 31 March 2023.

### **Responsibilities and basis of report**

As the charity trustees of the Charity you are responsible for the preparation of the accounts in accordance with the requirements of the Charities Act 2011 ('the Act').

I report in respect of my examination of the Charity's accounts carried out under section 145 of the 2011 Act and in carrying out my examination I have followed all the applicable Directions given by the Charity Commission under section 145(5)(b) of the Act.

### **Independent examiner's statement**

I have completed my examination. I confirm that no material matters have come to my attention in connection with the examination giving me cause to believe that in any material respect:

1. accounting records were not kept in respect of the Charity as required by section 130 of the Act; or
2. the accounts do not accord with those records; or
3. the accounts do not comply with the applicable requirements concerning the form and content of accounts set out in the Charities (Accounts and Reports) Regulations 2008 other than any requirement that the accounts give a 'true and fair view which is not a matter considered as part of an independent examination.

I have no concerns and have come across no other matters in connection with the examination to which attention should be drawn in this report in order to enable a proper understanding of the accounts to be reached.

*Joshua Kingston*

Joshua Kingston BSc., ACA  
Burton Sweet Limited  
The Clock Tower  
5 Farleigh Court  
Old Weston Road  
Flax Bourton  
Bristol BS48 1UR

Date: 24 January 2024 .....

# INCREDIBLE KIDS

YEAR ENDED 31 MARCH 2023

## RECEIPTS AND PAYMENTS ACCOUNT

	Unrestricted Funds	Restricted Funds	Total Funds 2023	Total Funds 2022
	£	£	£	£
<b>RECEIPTS</b>				
Donations and legacies	14,505	-	<b>14,505</b>	261,265
Grants received	45,750	47,605	<b>93,355</b>	146,574
Interest Received	1,842	-	<b>1,842</b>	-
<b>TOTAL RECEIPTS</b>	<b>62,097</b>	<b>47,605</b>	<b>109,702</b>	<b>407,839</b>
<b>PAYMENTS</b>				
<b>Raising Funds</b>				
Advertising & promotions	3,988	5,352	9,340	6,711
<b>Charitable Activities</b>				
<u>Direct costs</u>				
Staffing	27,287	33,764	61,051	33,875
Session costs	12,469	6,892	19,361	12,341
Virtual service	880	-	880	573
Renting session facilities	13,713	4,750	18,463	22,507
<u>Support Costs</u>				
Team related costs	911	582	1,493	1,512
Finance costs	77	-	77	110
Information technology	102	-	102	191
Office costs	5,510	1,090	6,600	9,500
Fixtures and Fittings Purchases	-	-	-	49,037
<b>TOTAL PAYMENTS</b>	<b>64,937</b>	<b>52,430</b>	<b>117,367</b>	<b>136,357</b>
<b>Cash funds at the beginning of the year</b>	<b>281,333</b>	<b>10,000</b>	<b>291,333</b>	<b>19,851</b>
<b>NET RECEIPTS/(PAYMENTS)</b>	<b>(2,840)</b>	<b>(4,825)</b>	<b>(7,665)</b>	<b>271,482</b>
<b>Transfers between funds during the year</b>	<b>(1,961)</b>	<b>1,961</b>	<b>-</b>	<b>-</b>
<b>Cash funds at the end of the year</b>	<b>276,532</b>	<b>7,136</b>	<b>283,668</b>	<b>291,333</b>

# INCREDIBLE KIDS

AS AT 31 MARCH 2023

## STATEMENT OF ASSETS AND LIABILITIES

	Unrestricted Funds	Restricted Funds	Total Funds 2023	Total Funds 2022
	£	£	£	£
<b>Fixed assets</b>				
Tangible fixed assets	39,230	-	39,230	49,037
<b>Cash funds</b>				
Bank and cash balances	283,668	-	283,668	291,333
<b>Current Assets</b>				
Other Debtors	725	-	725	1,032
	<u>725</u>	<u>-</u>	<u>725</u>	<u>1,032</u>
<b>Liabilities</b>				
Other creditor	7	-	7	7
Accruals	1,620	-	1,620	2,100
	<u>1,627</u>	<u>-</u>	<u>1,627</u>	<u>2,107</u>

### Fund balances at 31 March 2023

	At 1 April 2022	Income	Expenditure	Transfers	At 31 March 2023
<b>Restricted funds</b>					
Children in Need	-	9,969	(10,503)	534	-
Garfield Weston	-	10,000	(10,003)	3	-
John James	-	7,601	(1,546)	-	6,055
Nisbett Trust	-	-	(250)	250	-
Quartet Resilience	10,000	-	(10,000)	-	-
Alchemy	-	500	(500)	-	-
Axis	-	1,000	(681)	-	319
Burden Trust	-	4,250	(4,250)	-	-
MagicLG	-	500	(500)	-	-
Quartet BYCA	-	4,500	(4,273)	-	227
Quartet Stoke Park	-	3,000	(3,575)	575	-
Sobell	-	5,000	(5,516)	516	-
WSP Trains	-	750	(833)	83	-
Vine Church	-	535	-	-	535
	<u>10,000</u>	<u>47,605</u>	<u>(52,430)</u>	<u>1,961</u>	<u>7,136</u>
<b>Unrestricted funds</b>					
Designated funds					
Building fund	247,494	1,866	-	-	249,360
General funds	33,839	60,231	(64,937)	(1,961)	27,172
	<u>281,333</u>	<u>62,097</u>	<u>(64,937)</u>	<u>(1,961)</u>	<u>276,532</u>
<b>Total</b>	<u><b>291,333</b></u>	<u><b>109,702</b></u>	<u><b>(117,367)</b></u>	<u><b>-</b></u>	<u><b>283,668</b></u>

Signed on behalf of the trustees on 24 January 2024

*Jennie Prewett*

Jennie Prewitt, Trustee

**INCREDIBLE KIDS**

England & Wales - Charity number 1151185

---

# Accounts

---

# INCREDIBLE KIDS

2021-22



REGISTERED CHARITY 1151185



WE PROVIDE  
**INCLUSIVE PLAY**

ALONGSIDE  
**FAMILY SUPPORT**

INCREASING  
**WELLBEING**

**FOR FAMILIES IN BRISTOL THAT HAVE YOUNG PEOPLE WITH  
ADDITIONAL NEEDS AND DISABILITIES**



"AMAZING PEOPLE THAT  
HELP OUR CHILDREN HAVE  
FUN AND GIVE US  
PARENTS FIVE MINUTES  
FOR A CHAT AND A  
CUPPA."

QUOTE FROM AN INCREDIBLE FAMILY

Supported by  
  
 Children in Need

# WELCOME TO INCREDIBLE KIDS

## BY THE TRUSTEES

This year continued to be a year marked by restrictions and frequent change for our families and our service as lockdowns ended and were replaced by ever changing requirements. Our staff and families responded with resilience and flexibility as we continued to open for as many families as possible.

## INCREDIBLE KIDS PROVIDES A LIFELINE TO DISABLED YOUNG PEOPLE AND THEIR FAMILIES IN BRISTOL.

Our membership more than doubled in comparison to pre-lockdown levels as many other services remained closed. Although funding levels remained tight against our costs, through the support of local and national grant providers we were able to provide six term time sessions a week plus holiday sessions, and buy sensory equipment. In December we were delighted to receive funding toward our Incredible Home project - our target is to create our own centre.





# OUR ACHIEVEMENTS 2021/22

- Ran face-to-face play sessions for disabled children 52 weeks of the year
- We delivered 312 supported play sessions in person to disabled children
- 1784 family visits during the year.
- Ran 52 quiet sessions for families that need reduced numbers
- Started new sessions such as incredible Girls to help girls make friends.
- Member numbers increased to 2200
- Two face-to-face Christmas parties for 100 children and their families.
- Finalists in the Bristol Life Awards
- 1300 members of our closed Facebook group providing support and signposting as well as 3500 supporters on our public page.

# OUR DEDICATED TEAM

INCREDIBLE KIDS HAS A DEDICATED TEAM OF 5 SPECIALLY TRAINED PLAYWORKERS, A CENTRE MANAGER AND MORE THAN 40 PARENT-VOLUNTEERS.

Each session is designed by the centre manager to meet the needs of our families based on their feedback. We have a minimum of four playworkers on site for 30 children, plus the manager. We also have at least two volunteers to provide parents and caregivers with refreshments and advice.

We are the only organisation in Bristol to offer children's play sessions and parent support at the same time all year round.





# WHAT WE DO

We provide a service where:

- Children & young people with disabilities **engage in play** with their parents & carers.
- **Siblings** of children with additional needs have a space to play and be valued in their own right.
- Children have access to **specialist equipment** and toys.
- **Parents & carers access support & signposting.**
- Parents and children have the opportunity for ownership through **volunteering** and participation.
- Families become part of a **mutually supportive community.**

How we work:

We are a **grassroots charity** where our families are at our core.  
We respond quickly to **change.**  
We **understand our families' needs.**  
Work in **highly creative ways** to support families.  
We test new projects and ideas our members or staff suggest.  
Work with a **multi-agency approach** to provide bespoke support to families.  
We make a difference to members' lives by creating a **mutually supportive environment.**  
We **value member voices** and provide regular opportunities for feedback.

# ONWARDS AND UPWARDS

**OUR BENEFICIARIES FOUND 2021 AND 2022 TO BE A TIME OF REGULAR CHANGE, OF HOPE AND CHALLENGES. OUR FAMILIES CAN STRUGGLE WITH CHANGE SO OUR FOCUS WAS TO CREATE AN ENVIRONMENT WHERE WE PROVIDED AS MUCH FREEDOM AND STABILITY AS WE WERE ABLE TO ALONGSIDE SPACE FOR SAFETY AND COMFORT TO THOSE WHO REMAINED CONCERNED ABOUT THE PANDEMIC. THE BALANCE WAS TRICKY BUT OUR STAFF AND VOLUNTEERS WORKED HARD TO ACHIEVE THIS.**

Many families wanted to go back indoors so we reopened our indoor space and made use of funding to bring in external workshop providers. Events included Lego parties, crochet lessons, face painting, healthy eating workshops, music performers and SEND legal advice for parents.

Quiet sessions with less people became a regular weekly fixture by request, and we started an Incredible Girls session working closely with another local CIC who requested a space for girls.

We explored partnering with other organisations to deliver joint sessions during school holidays and we now have a model we hope to implement during 2023. We also began researching for our own facility, and the additional services we could provide.

We regularly survey our membership and use the information to shape our sessions. Members have also suggested they would like; dad and child sessions, Downs Syndrome sessions, and weekday sessions for children not in school.



**100% of our families would recommend Incredible Kids to someone else**

# A YOUNG PERSONS INCREDIBLE STORY

"When I got my autism diagnosis at age 15, I felt alone. I felt worried and scared of how different everything would be. How I would be expected to act and how I would be treated. I was unsure how to tell the people I knew and how to tell the world.

These months in between receiving my diagnosis but before joining Incredible Kids were some of my hardest and most stressful. Me and my family felt confused and alone. But then I attended my first Incredible Kids session.

Suddenly I didn't feel alone anymore. I felt accepted and I had something to start looking forward to every week. Thank you for giving me (and my mum) the chance to be myself, to laugh, to cry, to swing, to skate, to relax, to run, to make new friends, and to have fun with you."

# LETS GO LEGO ● ● ●

LEGO PARTIES IN 2021 / 2022



LEGO PARTIES PROVIDED A WELCOME DISTRACTION FROM THE EVER CHANGING RESTRICTIONS AND THE PRESSURES OF THE PAST YEAR THANKS TO FUNDING FOR OUTSIDE WORKSHOP PROVIDERS TO VISIT.

# LETS HAVE AN ADVENTURE

OUTDOOR PLAY FOR ALL



THANKS TO THE VENCH ADVENTURE  
PLAYGROUND WE COULD OFFER FAMILIES THEIR  
CHOICE OF INDOOR OR OUTDOOR PLAY WITH  
PLENTY OF SPACE OR SOCIAL INTERACTION TO  
SUIT INDIVIDUAL NEEDS

# MERRY CHRISTMAS ● ● ●

IN PERSON PARTIES 2021



A WEEK BEFORE THE UK WAS LOCKED DOWN FOR CHRISTMAS WE WERE ABLE TO OFFER ISOLATED FAMILIES A CHOICE OF TWO COVID-SAFE CHRISTMAS PARTIES FOR THOSE WHO WANTED TO COME. 100 PEOPLE CAME TO THE PARTIES.



## A'S STORY

I joined IK because I felt lonely and like no one understood me because of my disabilities. I wanted to meet other children who enjoyed playing like i did, and who would accept me for who I am. I wanted to be able to have fun like other teenagers my age, but

I needed a space which would allow me to do so. I felt supported by the playworkers who listened to me and cared for me. my mum felt relief as she got to talk with other parents so she felt less lonely. I feel supported by an amazing community and I don't know what i'd do without the sessions each week. they give me fun and comfort.

# Public benefit

In setting our objectives and planning our activities our Trustees have given careful consideration to the Charity Commission's general guidance on public benefit. This report outlines how our performance during the year has benefitted the public.

## CONTRIBUTION MADE BY VOLUNTEERS

Set up by parents and volunteers in 2012, our volunteers are at the centre of Incredible Kids alongside the families who visit us. Most volunteers are also users of the charity and we work hard to encourage parents and carers to volunteer with us.

In 2021/22, our volunteers continued to provide the core support enabling us to open during ever-changing restrictions. Volunteers continually redesigned our booking system as rules on numbers changed frequently. Our Incredible cake bakers brought a little bit of joy to families dropping off cakes for the children to enjoy. Volunteers implemented a new online management system to coordinate new ways of working and strengthen our playworker induction. Volunteers produce our newsletter too.

New volunteer playworkers joined us, many on placements from UWE which were supported by our management team to help them create portfolios of their experience whilst with us. Some of those volunteers have joined our playworker team long term and been developed in their career for the future.



## **CHARITY MODEL**

Incredible Kids registered as a charity on 11th March 2013 as a Charitable Incorporated Organisation. Our governing document is our Incredible Kids 'Foundation' model Constitution. Charity Registration Number 1151185.

## **TRUSTEE SKILLS**

Board of Trustees keep the skills required of the board under review throughout the year. In the event that a trustee retires or additional trustees are required, the board considers the recruitment of new trustees. When recruiting new trustees the board looks for individuals with skills and experience which are likely to be of value to the charity. If there is likely to be support for an applicant, initial contact will be made with the individual to ascertain both their suitability and their interest in a vacancy. Any new trustee is formally appointed by the Trustees. During 2021/22 Incredible Kids appointed four new trustees with a background in marketing, financial investments, finance and accounting and public sector leadership, while one existing trustee resigned. This increased our trustee board to six. Three of the trustees are service users with direct experience of the issues faced by families at Incredible Kids.

## **TRUSTEE SELECTION METHODS**

When selecting trustees, the charity has due regard for the skills, knowledge and experience needed for the effective administration of the CIO. New trustees are appointed by existing trustees. Apart from the first trustees, all trustees are appointed for a term of three years. Trustees may be appointed for a maximum of three, three years terms after which they must take a break for at least one year.

All Trustees are required to share the Christian faith. All other roles within the charity are open to those of any faith or no faith and volunteers agree to our Incredible Values of selflessness, honesty and accountability.

The Board of Trustees is responsible, from time to time, to appoint new trustees. As far as possible the charity aims to promote available roles as widely as possible, seeking out a range of sources to ensure we find the best people for the role. Three of our trustees are service users and two of our senior leadership team have a disability so we have strong beneficiary representation on the Board.

## **POLICIES AND PROCEDURES ADOPTED FOR THE INDUCTION AND TRAINING OF TRUSTEES**

The charity reviews recruitment, policies and procedures for training and appointing new trustees during each year. All trustees complete an application form, undertake an Enhanced Adult and Child DBS check, provide two references and are interviewed by a panel from the charity. All trustees receive a copy of the trustee handbook and undertake a thorough trustee induction.

# RISK

The Trustees maintain an organisational risk assessment and consider this regularly at Trustee meetings. The risk strategy identifies the core risks the charity faces, the likelihood of each risk occurring, the impact of each risk should it occur and then an overall risk score for each risk. This shows trustees the main areas of risk that they should develop systems to mitigate.

The principal risk facing the charity under current circumstances is the risk of being unable to secure sufficient funds to run our service. Incredible Kids was successful in securing an increase in funding over the last year. Employing a part-time fundraiser helps to mitigate this risk and the running costs of the charity are predictable and relatively low due compared to other similar charities. This is due to the charitable model which we operate under which is high in volunteer support and low in administrative costs. We focus our expenditure on frontline costs and minimise all other costs.

Another significant risk facing Incredible Kids is in relation to the provision of a venue from which to operate. Incredible Kids rents space from Groundwork UK is actively pursuing a dedicated space from which to operate full time and the funding received towards this goal in 2021/22 is welcome progress towards securing our Incredible Home.



# FINANCIAL REVIEW

**THIS WAS AN EXCITING YEAR FOR INCREDIBLE KIDS AND SPECIAL THANKS GO TO OUR FUNDERS, BIG AND SMALL WHO RESPONDED TO OUR SERVICE CHALLENGES AND OPPORTUNITIES WITH GENEROSITY!**

Incredible Kids total Income grew from £78,715 to £393,793, however **£247,494 of this related to a legacy donation set aside for our search for a permanent home for the charity.** £49,000 related to a grant from the Youth Investment Fund for capital equipment to provide sensory equipment. Excluding these two large receipts our comparable income would have been £97,299 for costs relating directly to our service. Overall our expenditure against this cost was £85,421 giving us a surplus of £11,878. We received a grant from Nisbett Trust for £10,000 shortly before the year end, for which we will have expenditure in the following year.

Donations from our members increased from £1,800 during the previous year of lockdowns to £13,735 reflecting our increased ability to run our face to face service. Our part time fundraiser is a key part of our Incredible Kids team, working one day a week to ensure we raise the funding we need to operate and their success is reflected in an increase in our funding during the year.

Our core rental costs of hiring space at the Vench increased significantly from £10,614 to £18,984 as we were open all year round as restrictions eased. The cost of hiring the space is a significant cost for us, even after receiving a discount from the venue. It also restricts our ability to return to our pre-covid level of a service 4 days a week. In addition we rented a storage unit to store much of our equipment as we experienced over 20 break-ins at the Vench during the year and felt concerned about the security of our equipment.

With thanks to BBC Children in Need, The Sobell Foundation, Edward Gosling, The Semble Network, John James, UK Youth Rausing, Quartet community Foundation, The Sarah Jayne Trust, St John's Church, The Toy Trust, Renishaw, Octopus Energy, Tesco Groundwork, Firehaus, St Marys Church in Fishponds, Emmanuel Church Westbury, and Magic Little Grants and all of our generous supporters and members who all donated towards the cost of running our various sessions.

## PURPOSES AND AIMS

Incredible Kids provides play and support services to families with a child or young person with a disability or additional need to strengthen and support family life, reduce inequality and social isolation. Activities include daytime family play sessions for young people with additional needs and their siblings in a safe, supported environment alongside advice and support for parent-carers.

Our Charities purposes are set out in the objects contained in the Charity's Constitution:

1. THE RELIEF OF CHILDREN WITH ADDITIONAL NEEDS; AND

2. PROVIDING RELIEF AND RESPITE TO THE FAMILY AND CARERS OF THE CHILDREN; THESE OBJECTS SHALL BE FURTHERED IN PARTICULAR BUT NOT EXCLUSIVELY BY:

A) PROVIDING CARE FOR THE CHILDREN AND PROVIDING OPPORTUNITIES FOR THEM TO SOCIALISE AND PLAY TOGETHER; AND

B) ALLOWING PARENTS AND CARERS TO TAKE A SHORT BREAK FROM THE PRESSURES OF EVERYDAY LIFE AND ENCOURAGING A MUTUALLY SUPPORTIVE ENVIRONMENT FOR PARENTS AND CARERS.

WE DEFINE THOSE WITH ADDITIONAL NEEDS AS CHILDREN AND YOUNG PEOPLE WHO HAVE A PHYSICAL, SENSORY, COMMUNICATION, BEHAVIOURAL OR LEARNING DIFFICULTY, OR HAVE A LONG TERM/LIFE LIMITING CONDITION

Our organisation provides an inclusive and welcoming space with specialist toys and equipment that meet the children's needs. It enables them to play, have fun, and make new friends, and is a place where children, their siblings, and parents/carers alike can come together for acceptance, mutual support, and a sense of belonging. We provide a range of support for the whole family, including:

- Family play sessions for children and young people with additional needs, delivered by specially trained playworkers who engage the children in fun and meaningful play.
- Family play sessions for siblings of children and young people with additional needs, which helps improve understanding and the wellbeing of the whole family.
- Provision of training and support to parents/carers to help increase their knowledge and resilience in their ability to parent and access specialist services.
- A series of special events each year for families to attend.
- 

We refer to the guidance contained in the Charity Commission's general guidance on public benefit when reviewing the charity's aims and objectives and in planning its activities for the following year

Our governing document is our Incredible Kids 'Foundation' model Constitution.

# 2021/2022 RESERVES

Incredible Kids gives due regard to the level of reserves that it requires to ensure future service delivery. Last year, the trustees considered the charities need to hold reserves in the light of our continued growth.

Incredible Kids has actively increased its level of reserves this year and has three months running costs in reserve. In light of this the trustees are aiming to hold reserves of 3 months of unrestricted expenditure which equates to £16,360. As at the year end we had £32,764 unrestricted funds. The trustees recognise that the charity has a future building project for which they are raising funds.



# INCREDIBLE DONORS

THANK  
YOU!

Quartet Community Foundation

John James Foundation

The Sobell Foundation

The Sarah Jayne Charitable Trust

BBC Children in Need

The Burden Trust

The Brenda Hoskins Trust

Octopus Energy

Local Giving

The Julia and Hans Rausing

The Vine, Awkley

Emmanuel Church, Westbury

The Nisbet Trust

Renishaw

The Toy Trust

Firehaus

Edward Gostling Foundation

Society of Merchant Venturers

Sir Robert McAlpine

Action Funder

Church of St John the Evangelist

Fishponds Baptist Church

Garfield Weston

And every single member of  
Incredible Kids who donates to us!



# ABOUT US



## DECLARATIONS

THE TRUSTEES DECLARE THAT THEY HAVE APPROVED THE TRUSTEES' REPORT ABOVE ON THE 31ST JANUARY 2023.

JENNIE PREWETT SANDIE DAVIS  
REV CANNON BRENDAN CLOVER, LAURA BUTLER  
DOMINIC FLETCHER, NIGEL WILLOUGHBY  
SIGNED ON BEHALF OF THE CHARITY'S TRUSTEES

## INCREDIBLE KIDS STRUCTURE

### CIO CIO FOUNDATION MODEL (CIO)

#### 6 TRUSTEES

- 1 Jennie prewett Chair
2. Sandie Davis 
3. KANTISH BHALERAO RESIGNED 29TH JUNE 2021
- 4, Rev. Brendan CLOVER, APPOINTED 28TH MAY 2021
5. Laura BUTLER, APPOINTED 29TH JULY 2021
6. DOMINIC FLETCHER, APPOINTED 29TH JULY 2021
7. NIGEL WILLOUGHBY, APPOINTED 29TH JULY 2021

REGISTERED CHARITY 1151185



[CONTACT@INCREDIBLEKIDS.ORG.UK](mailto:CONTACT@INCREDIBLEKIDS.ORG.UK)



INCREDIBLE KIDS  
C/O THE VENCH  
ROMNEY AVENUE  
LOCKLEAZE  
BRISTOL  
BS7 9TD.



[WWW.INCREDIBLEKIDS.ORG.UK](http://WWW.INCREDIBLEKIDS.ORG.UK)

## **Statement of trustees' responsibilities**

The trustees are responsible for preparing the Trustees' Report and the financial statements in accordance with applicable law and United Kingdom Accounting Standards including Financial Reporting Standard 102: The Financial Reporting Standard applicable in the UK and Republic of Ireland (United Kingdom Generally Accepted Accounting Practice).

The law applicable to charities in England & Wales/Scotland/Northern Ireland requires the trustees to prepare financial statements for each financial year which give a true and fair view of the state of affairs of the charity and of the income and expenditure of the charity for that period. In preparing these financial statements, the trustees are required to:

- select suitable accounting policies and then apply them consistently;
- observe the methods and principles in the Charities SORP;
- make judgments and accounting estimates that are reasonable and prudent;
- state whether applicable UK Accounting Standards have been followed, subject to any material departures disclosed and explained in the financial statements; and
- prepare the financial statements on the going concern basis unless it is inappropriate to presume that the charity will continue in business.

The trustees are responsible for keeping sufficient accounting records that disclose with reasonable accuracy at any time the financial position of the charity and enable them to ensure that the financial statements comply with the Charities Act 2011, the Charity (Accounts and Reports) Regulations 2008 and the provisions of the trust deed/constitution. They are also responsible for safeguarding the assets of the charity and hence for taking reasonable steps for the prevention and detection of fraud and other irregularities.

## **Independent examiner's report to the trustees of Incredible Kids**

I report to the trustees on my examination of the accounts of Incredible Kids (the Charity) for the year ended 31 March 2022.

### **Responsibilities and basis of report**

As the charity trustees of the Charity you are responsible for the preparation of the accounts in accordance with the requirements of the Charities Act 2011 ('the Act').

I report in respect of my examination of the Charity's accounts carried out under section 145 of the 2011 Act and in carrying out my examination I have followed all the applicable Directions given by the Charity Commission under section 145(5)(b) of the Act.

### **Independent examiner's statement**

Since the Charity's gross income exceeded £250,000 your examiner must be a member of a body listed in section 145 of the 2011 Act. I confirm that I am qualified to undertake the examination because I am a member of the Institute of Chartered Accountants in England and Wales, which is one of the listed bodies.

I have completed my examination. I confirm that no material matters have come to my attention in connection with the examination giving me cause to believe that in any material respect:

- accounting records were not kept in respect of the Charity as required by section 130 of the Act; or
- the accounts do not accord with those records; or
- the accounts do not comply with the applicable requirements concerning the form and content of accounts set out in the Charities (Accounts and Reports) Regulations 2008 other than any requirement that the accounts give a 'true and fair view which is not a matter considered as part of an independent examination.

I have no concerns and have come across no other matters in connection with the examination to which attention should be drawn in this report in order to enable a proper understanding of the accounts to be reached.

**Joshua Kingston BSc., ACA**  
**Burton Sweet Chartered Accountants**  
**The Clock Tower**  
**5 Farleigh Court**  
**Old Weston Road**  
**Flax Bourton**  
**Bristol BS48 1UR**

**Date:** 31 January 2023  
.....

**INCREDIBLE KIDS**  
**STATEMENT OF FINANCIAL ACTIVITIES**  
**YEAR ENDED 31 MARCH 2022**

	Note	Unrestricted Funds £	Restricted Funds £	Total Funds 2022 £	Total Funds 2021 £
<b>Income from:</b>					
Donations and legacies	2	317,172	76,621	393,793	78,715
<b>Total income</b>		<u>317,172</u>	<u>76,621</u>	<u>393,793</u>	<u>78,715</u>
<b>Expenditure on:</b>					
Raising funds	3	8,168	-	8,168	5,652
Charitable activities	4	57,274	19,979	77,253	57,565
<b>Total expenditure</b>		<u>65,442</u>	<u>19,979</u>	<u>85,421</u>	<u>63,217</u>
<b>Net income/(expenditure)</b>	7	251,730	56,642	308,372	15,498
<b>Transfers between funds</b>	14	48,275	(48,275)	-	-
<b>Net movement in funds</b>		<u>300,005</u>	<u>8,367</u>	<u>308,372</u>	<u>15,498</u>
<b>Total funds at start of year</b>	14	29,290	1,633	30,923	15,425
<b>Total funds at end of year</b>	14	<u>329,295</u>	<u>10,000</u>	<u>339,295</u>	<u>30,923</u>

The Charity has no recognised gains or losses other than the results for the year as set out above.

All of the activities of the charity are classed as continuing.

**The notes on pages 3 to 13 form part of these financial statements**  
**See note 10 for fund-accounting comparative figures**

**INCREDIBLE KIDS**  
**BALANCE SHEET**  
**AS AT 31 MARCH 2022**

**Charity number: 1151185**

	<b>Note</b>	<b>2022</b> <b>£</b>	<b>2021</b> <b>£</b>
<b>Fixed assets</b>			
Tangible fixed assets	<b>11</b>	49,037	50
		<u>49,037</u>	<u>50</u>
<b>Current assets</b>			
Debtors	<b>12</b>	1,032	11,022
Cash at bank and in hand		291,333	19,851
		<u>292,365</u>	<u>30,873</u>
<b>Liabilities</b>			
Creditors : amounts falling due within one year	<b>13</b>	(2,107)	-
		<u>290,258</u>	<u>30,873</u>
<b>Net current assets</b>		<u>290,258</u>	<u>30,873</u>
<b>Net assets</b>		<u><u>339,295</u></u>	<u><u>30,923</u></u>
<b>Funds</b>			
<b>Unrestricted funds</b>			
General funds	<b>15</b>	32,764	29,240
Designated funds	<b>15</b>	296,531	50
<b>Restricted funds</b>	<b>15</b>	10,000	1,633
<b>Total funds</b>		<u><u>339,295</u></u>	<u><u>30,923</u></u>

These financial statements were approved by the Trustees on 31 January 2023 and are signed on their behalf by

Jennifer Prewett  
Chair of Trustees

**The notes on pages 3 to 13 form part of these financial statements**

# INCREDIBLE KIDS

## NOTES TO THE FINANCIAL STATEMENTS

YEAR ENDED 31 MARCH 2022

---

### 1 Accounting policies

#### Accounting convention

The accounts (financial statements) have been prepared in accordance with the Statement of Recommended Practice: Accounting and Reporting by Charities preparing their accounts in accordance with the Financial Reporting Standard applicable in the UK and Republic of Ireland (FRS 102) issued in October 2019 and the Financial Reporting Standard applicable in the United Kingdom and Republic of Ireland (FRS 102) and the Charities Act 2011 and UK Generally Accepted Practice as it applies from 1 January 2019.

The accounts (financial statements) have been prepared to give a 'true and fair' view and have departed from the Charities (Accounts and Reports) Regulations 2008 only to the extent required to provide a 'true and fair view'. This departure has involved following Accounting and Reporting by Charities: Statement of Recommended Practice applicable to charities preparing their accounts in accordance with the Financial Reporting Standard applicable in the UK and Republic of Ireland (FRS 102) issued in October 2019 rather than the Accounting and Reporting by Charities: Statement of Recommended Practice effective from 1 April 2005 which has since been withdrawn.

The charity is a public benefit entity as defined under FRS102. The Trustees consider that there are no material uncertainties affecting the ability of the charity to continue as a going concern.

#### Income

Income from donations is included in income when these are receivable, except as follows:

- I. When donors specify that donations given to the charity must be used in future accounting periods, the income is deferred until those periods;
- II. When donors impose conditions which have to be fulfilled before the charity becomes entitled to use such income, the income is deferred until the pre-conditions have been met.

Legacies are included on a receivable basis where charity is entitled to the income, it can be measured reliably and receipt is probable. Where legacies have been notified to the charity, or the charity is aware of the granting of probate, and the criteria for income recognition have not been met, then the legacy is not included in income but is treated as a contingent asset and disclosed if material.

Investment income is included on a receivable basis.

Donations in kind comprise donated services where the costs are measurable and the services would otherwise have to be paid for to maintain operational effectiveness.

#### Expenditure

Expenditure is recognised in the period in which it is incurred. Expenditure includes attributable VAT which cannot be recovered.

# INCREDIBLE KIDS

## NOTES TO THE FINANCIAL STATEMENTS

YEAR ENDED 31 MARCH 2022

---

### 1 Accounting policies (*continued*)

#### ***Raising funds***

Raising funds expenditure include those costs incurred in seeking voluntary contributions, costs of goods sold and other costs which include the costs of running and participating in fundraising events and collections and cost of goods purchased for resale.

#### ***Charitable Activities***

Grants awarded are allocated to charitable activities.

Grants awarded are treated as expenditure and a liability in the accounts as soon as they become legal or constructive obligations. In the case of multi-year grant awards, the funding for all years is immediately recognised unless there are conditions which need to be met by the recipient to enable the release of subsequent years' funding.

#### ***Governance costs***

Governance costs include those costs associated with meeting the constitutional and statutory requirements of the charity and include the audit fees and costs linked to the strategic management of the charity. Governance costs are included within support costs.

#### ***Allocation and apportionment costs***

Certain expenditure is directly attributable to specific activities and this has been included in those cost categories. Other costs, which are attributable to more than one category, are within support costs and apportioned across cost categories as follows:

Overhead support costs have been allocated between fundraising costs and charitable activities costs. The apportionment has been allocated on the basis of usage and is analysed in note 5.

#### ***Pension costs and other post-retirement benefits***

The charity contributes to defined contribution pension schemes. Contributions payable to the charity's pension schemes are charged to the Statement of Financial Activities in the period to which they relate.

#### ***Tangible fixed assets***

Fixed assets are held at cost less accumulated depreciation. Assets costing less than £1,000 are not capitalised. Depreciation is calculated so as to write off the cost of an asset, less its estimated ultimate residual value, over the useful life of that asset as follows:

- Fixtures and fittings - over 5 years straight line
- Office equipment - over 5 years straight line

#### ***Debtors***

Trade and other debtors are recognised at the settlement amount after any trade discount offered. Prepayments are valued at the amount prepaid net of any trade discounts due.

**INCREDIBLE KIDS**  
**NOTES TO THE FINANCIAL STATEMENTS**  
**YEAR ENDED 31 MARCH 2022**

---

**1 Accounting policies (continued)**

**Cash**

Cash at bank and in hand includes cash and short-term highly liquid investments with a short maturity of three months or less from the date of acquisition or opening of the deposit or similar account.

**Creditors**

Creditors and provisions are recognised when there is an obligation at the balance sheet date as a result of a past event, it is probable of a transfer of economic benefit will be required in settlement, and the amount of the settlement can be estimated reliably.

Creditors are recognised at the amount that the charity anticipates it will pay to settlement, and the amount of the settlement can be estimated reliably.

Provisions are measure at the best estimate of the amounts required to settle the obligation. Where the effect of the time value of money is material, the provision is based on the present value of those amounts, discounted at the pre-tax discount rate that reflects the risks specific to the liability. The unwinding of the discount is recognised within interest payable and similar charges.

**Fund accounting**

Unrestricted funds can be used in accordance with the charitable objects at the discretion of the trustees.

Restricted funds can only be used for particular restricted purposes within the objects of the charity. Restrictions arise when specified by the donor or when funds are raised for particular restricted purposes.

Designated funds form part of unrestricted funds and have been identified as being for particular purposes by the Trustees. They are not restricted and can be transferred to general funds at any time at the discretion of the Trustees.

Further explanation of the nature and purpose of each fund is included in note 14 of the financial statements.

**2 Income from: Donations and legacies**

<b>Current year</b>	<b>Unrestricted Funds £</b>	<b>Restricted Funds £</b>	<b>Total Funds 2022 £</b>
Donations and legacies	257,233	-	257,233
Grants received	59,939	76,621	136,560
	<u>317,172</u>	<u>76,621</u>	<u>393,793</u>

**INCREDIBLE KIDS**  
**NOTES TO THE FINANCIAL STATEMENTS**  
**YEAR ENDED 31 MARCH 2022**

---

**2 Income from: Donations and legacies (continued)**

Prior year	Unrestricted Funds £	Restricted Funds £	Total Funds 2021 £
Donations and legacies	8,006	-	8,006
Grants received	20,814	49,895	70,709
	<u>28,820</u>	<u>49,895</u>	<u>78,715</u>

**3 Expenditure on: Raising funds**

	Total Funds 2022 £	Total Funds 2021 £
Advertising & promotions	7,342	448
Fundraising staff	-	4,769
Support costs (Note 5)	826	435
	<u>8,168</u>	<u>5,652</u>

**4 Expenditure on: Charitable activities**

	Total Funds 2022 £	Total Funds 2021 £
<b>Direct costs</b>		
Staffing	33,837	35,332
Session costs	12,522	5,351
Virtual service	573	1,829
Renting session facilities	22,507	10,614
<b>Support costs</b> (Note 5)	7,814	4,439
	<u>77,253</u>	<u>57,565</u>

**INCREDIBLE KIDS**  
**NOTES TO THE FINANCIAL STATEMENTS**  
**YEAR ENDED 31 MARCH 2022**

---

**5 Support costs**

Support costs are allocated between raising funds and charitable activities on the basis of usage.

Support costs, included in notes 3 & 4, are as follows:

**Current year**

	<b>Fundraising costs</b>	<b>Charitable activities costs</b>	<b>Total 2022</b>
	<b>£</b>	<b>£</b>	<b>£</b>
Team related costs	145	1,374	1,519
Finance costs	11	104	115
Information technology	17	164	181
Office costs	452	4,273	4,725
Governance costs (Note 6)	201	1,899	2,100
	<u>826</u>	<u>7,814</u>	<u>8,640</u>

**Prior year**

	<b>Fundraising costs</b>	<b>Charitable activities costs</b>	<b>Total 2021</b>
	<b>£</b>	<b>£</b>	<b>£</b>
Team related costs	50	511	561
Finance costs	6	65	71
Office costs	79	804	883
Rent	219	2,233	2,452
Governance costs (Note 6)	81	826	907
	<u>435</u>	<u>4,439</u>	<u>4,874</u>

**6 Governance costs**

	<b>Total Funds 2022</b>	<b>Total Funds 2021</b>
	<b>£</b>	<b>£</b>
Independent Examiner's fees	2,100	907
	<u>2,100</u>	<u>907</u>

**INCREDIBLE KIDS**  
**NOTES TO THE FINANCIAL STATEMENTS**  
**YEAR ENDED 31 MARCH 2022**

---

**7 Net income/(expenditure) for the year**

This is stated after charging:

	<b>2022</b>	2021
	<b>£</b>	£
Independent Examiner's fees	2,100	907
Depreciation	50	25
	<u>50</u>	<u>25</u>

No Trustees have been reimbursed for their out of pocket travel expenses (2021: Nil). No Trustee received any remuneration during the year.

**8 Staff costs and numbers**

The aggregate payroll costs were:

	<b>2022</b>	2021
	<b>£</b>	£
Wages & salaries	35,567	37,995
Social security costs	145	266
Pension contributions	186	182
	<u>35,898</u>	<u>38,443</u>

No employee received emoluments of more than £60,000.

The average weekly number of employees during the year was 14 (2021: 13), calculated on the basis of average headcount. The total employment benefits received by key management personnel including employer national insurance and employer pension were £9,888 (2021: £10,419).

**9 Taxation**

The charity is exempt from corporation tax on its charitable activities.

**INCREDIBLE KIDS**  
**NOTES TO THE FINANCIAL STATEMENTS**  
**YEAR ENDED 31 MARCH 2022**

**10 Statement of Financial Activities comparative figures**

<b>For the year ended 31 March 2021</b>	<b>Unrestricted Funds £</b>	<b>Restricted Funds £</b>	<b>Total Funds 2021 £</b>
<b>Income from:</b>			
Gifts and donations	28,820	49,895	78,715
<b>Total income</b>	<u>28,820</u>	<u>49,895</u>	<u>78,715</u>
<b>Expenditure on:</b>			
Raising funds	5,652	-	5,652
Charitable activities	9,303	48,262	57,565
<b>Total expenditure</b>	<u>14,955</u>	<u>48,262</u>	<u>63,217</u>
<b>Net income/(expenditure) for the year and net movement in funds</b>	13,865	1,633	15,498
<b>Total funds at start of year</b>	15,425	-	15,425
<b>Total funds at end of year</b>	<u>29,290</u>	<u>1,633</u>	<u>30,923</u>

**11 Tangible fixed assets**

	<b>Fixtures and fittings £</b>	<b>Office equipment £</b>	<b>Total £</b>
<b>Cost or valuation</b>			
At 1 April 2021	-	75	75
Additions	49,037	-	49,037
At 31 March 2022	<u>49,037</u>	<u>75</u>	<u>49,112</u>
<b>Depreciation</b>			
At 1 April 2021	-	25	25
Charge for the year	-	50	50
At 31 March 2022	<u>-</u>	<u>75</u>	<u>75</u>
<b>Net book value</b>			
At 31 March 2022	<u>49,037</u>	<u>-</u>	<u>49,037</u>
At 31 March 2021	<u>-</u>	<u>50</u>	<u>50</u>

**INCREDIBLE KIDS**  
**NOTES TO THE FINANCIAL STATEMENTS**  
**YEAR ENDED 31 MARCH 2022**

**12 Debtors**

	<b>2022</b>	2021
	<b>£</b>	<b>£</b>
<b>Due in less than one year:</b>		
Prepayments and accrued income	-	10,514
Other debtors	1,032	508
	<u>1,032</u>	<u>11,022</u>

**13 Creditors: amounts falling due within one year**

	<b>2022</b>	2021
	<b>£</b>	<b>£</b>
Other creditors	7	-
Accruals	2,100	-
	<u>2,107</u>	<u>-</u>

**14 Movement in funds**

**For the year ended 31 March 2022**

	<b>At 1 April</b>				<b>At 31 March</b>
	<b>2021</b>	<b>Income</b>	<b>Expenditure</b>	<b>Transfers</b>	<b>2022</b>
	<b>£</b>	<b>£</b>	<b>£</b>	<b>£</b>	<b>£</b>
<b>Restricted funds</b>					
Children in Need	-	9,969	(9,969)	-	-
Youth investment	-	49,000	-	(49,000)	-
BCC Youth Sector Quartet	-	4,400	(4,400)	-	-
Quartet Resilience	-	10,000	-	-	10,000
Friends Stoke Park	-	3,252	(3,252)	-	-
Quartet	1,117	-	(1,117)	-	-
Skipton	516	-	(1,241)	725	-
	<u>1,633</u>	<u>76,621</u>	<u>(19,979)</u>	<u>(48,275)</u>	<u>10,000</u>
<b>Unrestricted funds</b>					
Designated funds					
Tangible fixed assets fund	50	-	(50)	49,037	49,037
Building fund	-	247,494	-	-	247,494
General funds	29,240	69,678	(65,392)	(762)	32,764
	<u>29,290</u>	<u>317,172</u>	<u>(65,442)</u>	<u>48,275</u>	<u>329,295</u>
<b>Total funds</b>	<u>30,923</u>	<u>393,793</u>	<u>(85,421)</u>	<u>-</u>	<u>339,295</u>

**INCREDIBLE KIDS**  
**NOTES TO THE FINANCIAL STATEMENTS**  
**YEAR ENDED 31 MARCH 2022**

**14 Movement in funds (continued)**

For the year ended 31 March 2021

	At 1 April 2020 £	Income £	Expenditure £	Transfers £	At 31 March 2021 £
<b>Restricted funds</b>					
Children in Need	-	9,992	(9,992)	-	-
Children in Need - Booster	-	3,000	(3,000)	-	-
Garfield Weston	-	6,500	(6,500)	-	-
John James	-	2,000	(2,000)	-	-
Nisbett Trust	-	9,000	(9,000)	-	-
Quartet	-	5,000	(5,000)	-	-
Quartet recovery	-	2,000	(883)	-	1,117
Rix Thompson Rothenburg	-	6,000	(6,000)	-	-
Skipton	-	1,403	(887)	-	516
Sobell	-	5,000	(5,000)	-	-
	<u>-</u>	<u>49,895</u>	<u>(48,262)</u>	<u>-</u>	<u>1,633</u>
<b>Unrestricted funds</b>					
Tangible fixed assets fund	-	-	-	50	50
General funds	15,425	28,820	(14,955)	(50)	29,240
	<u>15,425</u>	<u>28,820</u>	<u>(14,955)</u>	<u>-</u>	<u>29,290</u>
<b>Total funds</b>	<u>15,425</u>	<u>78,715</u>	<u>(63,217)</u>	<u>-</u>	<u>30,923</u>

**Restricted funds**

*Children in Need*

This fund represents funding received towards manager/session supervision during our session delivery.

*Youth investment*

This fund represents grant received from Children In Need towards purchase of sensory equipment for children with disabilities.

*BCC Youth Sector Quartet*

This fund represents funding received towards the cost of delivering outdoor play and support sessions for children with disabilities.

## INCREDIBLE KIDS

### NOTES TO THE FINANCIAL STATEMENTS

YEAR ENDED 31 MARCH 2022

---

*Quartet Resilience*

This aim of this fund is to make Incredible Kids more resilient by funding finance admin staff, social media and marketing staff.

*Friends Stoke Park*

This fund represents funding received towards 4 Saturday session delivery costs from May 2021 until June 2021.

*Quartet*

This fund represents Coronavirus response support funding towards running costs.

*Quartet Recovery*

This fund represents funding towards admin costs.

*Children in Need - Booster*

This fund represents funding towards running costs.

*Garfield Weston*

This fund represents funding received towards playworker and session costs.

*John James*

This fund represents funding received towards session costs.

*Nisbett Trust*

This fund represents funding received to cover playworker costs for the period 2020 to 2023.

*Rix Thompson Rothenburg*

This fund represents funding received towards running costs.

*Skipton*

This fund represents grant received to towards the cost of sensory equipment for children with disabilities.

*Sobell*

This fund represents funding received to cover playworker costs.

#### **Designated funds**

Tangible fixed assets - these funds represent the value of tangible fixed assets held in the Balance Sheet and are included within a separate designated fund to indicate that these funds are not available to be spent within general funds or free reserves without the sale of the assets.

**Building fund**

This fund represents a legacy received from J. Brenda Hoskins Trust which has been set aside by the trustees towards securing a permanent building for the charity.

**INCREDIBLE KIDS**  
**NOTES TO THE FINANCIAL STATEMENTS**  
**YEAR ENDED 31 MARCH 2022**

---

**15 Analysis of net assets between funds**

<b>As at 31 March 2022</b>	<b>Restricted funds</b>	<b>Unrestricted designated funds</b>	<b>Unrestricted general funds</b>	<b>Total</b>
	<b>£</b>	<b>£</b>	<b>£</b>	<b>£</b>
Tangible fixed assets	-	49,037	-	49,037
Other net assets	10,000	247,494	32,764	290,258
	<u>10,000</u>	<u>296,531</u>	<u>32,764</u>	<u>339,295</u>

<b>As at 31 March 2021</b>	<b>Restricted funds</b>	<b>Unrestricted designated funds</b>	<b>Unrestricted general funds</b>	<b>Total</b>
	<b>£</b>	<b>£</b>	<b>£</b>	<b>£</b>
Tangible fixed assets	-	50	-	50
Other net assets	1,633	-	29,240	30,873
	<u>1,633</u>	<u>50</u>	<u>29,240</u>	<u>30,923</u>

**16 Related party transactions**

There are no transactions with trustees or other related parties other than those disclosed as required by the SORP elsewhere in the financial statements.

**INCREDIBLE KIDS**

England & Wales - Charity number 1151185

---

# Accounts

---

# INCREDIBLE KIDS

2020-2021



REGISTERED CHARITY 1151185



WE PROVIDE  
**INCLUSIVE PLAY**

ALONGSIDE  
**FAMILY SUPPORT**

INCREASING  
**WELLBEING**

FOR FAMILIES THAT HAVE YOUNG PEOPLE WITH ADDITIONAL  
NEEDS AND DISABILITIES

# WELCOME TO INCREDIBLE KIDS

## BY THE TRUSTEES

To say that this year was a challenge for our families and for Incredible Kids is an understatement. Many services closed and families were left even more isolated than ever. Despite this, green shoots of hope emerged and we found creative solutions to support our families through this uncertain time of isolation, on top of a global pandemic.

## INCREDIBLE KIDS PROVIDES A LIFELINE TO DISABLED YOUNG PEOPLE AND THEIR FAMILIES IN BRISTOL.

Our direct playwork continued through outdoor play sessions in Bristol and the number of members grew as services increased in demand. Thanks to emergency grants and funding as well as the generosity of our members we were able to respond to the crisis and provide the lifeline our families rely on. Many charities experienced a reduction in income, in contrast, our costs grew to require additional income.





# WHAT WE DO

We provide a service where:

- Children & young people with disabilities **engage in play** with their parents & carers.
- **Siblings** of children with additional needs have a space to play and be valued in their own right.
- Children have access to **specialist equipment** and toys.
- **Parents & carers access support & signposting.**
- Parents and children have the opportunity for ownership through **volunteering** and participation.
- Families become part of a **mutually supportive community.**

How we work:

We are a **grassroots charity** where our families are at our core.

We respond quickly to **change.**


We **understand our families** and their needs.

Work in **highly creative** ways to support families.

Work with a **multi-agency approach** to provide bespoke support to families.

We make a difference in the lives of families by creating a **mutually supportive environment.**

We **value the voices of our families** and provide regular opportunities for feedback.

A woman with glasses and a green jacket is sitting on the left, looking at a large orange sensory bin. A child is sitting on the right, focused on playing with the bin. The bin is filled with white sensory material and contains several colorful plastic cups and spoons. The background shows a paved area and a fence.

**”ABSOLUTELY BEEN A  
GODSEND FOR US. IF IT WASN’T  
FOR INCREDIBLE KIDS THE  
COVID SITUATION WOULD HAVE  
BEEN MUCH HARDER TO DEAL  
WITH”**

QUOTE FROM AN INCREDIBLE FAMILY

Supported by  
  
 **Children in Need**



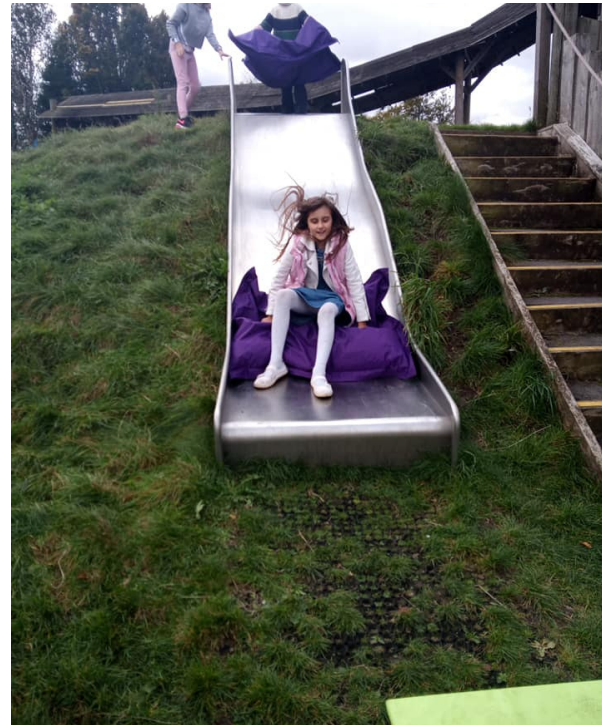
# OUR ACHIEVEMENTS 2020/2021

- RAN FACE TO FACE PLAY SESSIONS DURING THE 2ND AND 3RD LOCKDOWNS
- WE DELIVERED 170 SUPPORTED PLAY SESSIONS IN PERSON TO DISABLED CHILDREN
- WE CONDUCTED 118 PLAY SESSIONS FOR 4 TO 8 FAMILIES, TOTALLY 583 FAMILY VISITS
- DELIVERED PLAY TRAYS TO FAMILIES ALL OVER BRISTOL IN THEIR GARDENS
- RAN 4 VIRTUAL PARTIES FOR THOSE WHO WERE STAYING AT HOME
- CREATED ONLINE INCLUSIVE PLAY PACKS
- DELIVERED CRAFT BOXES TO CHILDREN ACROSS THE WIDER BRISTOL AREA
- HOSTED FACE TO FACE CHRISTMAS PARTIES FOR 100 CHILDREN & THEIR FAMILIES
- MOVED OUR SERVICE TO AN OUTDOOR VENUE SO THAT WE COULD STAY OPEN
- INCREASED OUR SERVICE PROVISION AT A TIME WHEN OTHERS WERE REDUCING
- OUR PLAYWORKERS WERE SHORTLISTED FOR 4 AWARDS FOR THEIR LOCKDOWN WORK

# OUR RESPONSE TO CORONAVIRUS

## CREATIVE RESILIENCE

When the global pandemic began to affect our service in February 2020 our creative team of playworkers, resilient staff and volunteers planned ways to support our families. With a grant from Quartet Community Foundation, we sent out activity packs to our families. With the funding, we designed individual at-home play idea plans for disabled children to carry out during lockdown in their own homes. These plans were designed by our playworkers around individual children taking into consideration their disability, their home space, their family dynamic, sibling ages and their available resources.



# CRISIS RESPONSE

**For all of us at Incredible Kids and our wider community the past 12 months have been incredibly challenging, unusual and eventful. Society as we know it has shifted fundamentally. As a small charity who specialise in grass-roots face to face support for disabled or life-limited children and their families this year has required a dramatic change in the way that we deliver and reach our beneficiaries**

As an organisation founded and run by parents of disabled children, we were intrinsically aware that the unfolding crisis would place disproportionate pressures on disabled people, on children and on caregivers. . We have worked closely with our community to continually monitor, interpret and understand the extent of the effect of this crisis on them.

In March 2020, in line with restrictions we closed the doors on our Kingswood site. At this time we issued an initial survey to families to begin to build our coronavirus response service. to our families.

The survey showed us that 97% were concerned about the impact of service closures on their family, 80% were concerned about the impact on their mental health, 100% were experiencing anxiety and worries. As a result of this survey Incredible Kids made the decision to not furlough our staff or reduce outputs but instead to increase our fundraising in order to develop our provision, cover overheads and compensate for a loss of income from session fees and refreshment sales.



100% OF OUR FAMILIES WOULD RECOMMEND  
INCREDIBLE KIDS TO SOMEONE ELSE

# OUR RESPONSE TO CORONAVIRUS

## CREATIVE RESILIENCE

Our dedication to ensuring our beneficiaries received support and playful interventions throughout the crisis meant that our approach and outputs had to be tailored to fit with the evolving government guidelines and restrictions. From at home play packs, bespoke home activity plans and keeping in touch letters during the initial lockdown to messy play set-ups and 1-1 playworker sessions in private gardens during the first relaxing of measures. In early summer 2020 we piloted opening up again as a reduced capacity outdoor service initially this was done in the car park of our Kingswood venue. In order to deliver safe and constant outdoor service we had to relocate our sessions from our affordable hall in Kingswood to a purpose-built accessible playground. The Vench Adventure Playground in Bristol has provided an ideal location for our sessions and has provided an excellent and much-loved base for Incredible Kids.



# GOING OUTDOORS

From August 2020- March 2021 we have delivered pre-bookable, reduced capacity outdoor sessions in all weathers. We have been allowed to operate through both the second and third lockdowns as an **essential support service**.

Once we reopened with outdoor sessions it was clear that this was a real **lifeline** for the children who visited. Families told us there were no other in-person services that they could access. Children appreciated the smaller group sizes and found it easier to **make friends** as they could book a consistent slot with the same small number of children and develop friendships.

Children became **more confident** leaving home and interacting in real life as we kept the groups small. Parents told us stories of how difficult life had been at home in lockdown, including family breakdown, domestic violence and loneliness.

Being able to visit us, meet friends, play with familiar playworkers and spend some time with social interaction increased happiness, reduced social isolation and boosted confidence.

We have supported 284 children through the past 12 months and numbers continue to grow. It is our priority to increase our income over 2021 to ensure we can sustain the higher costs of hiring The Vench and continue to deliver a consistent service

---

# ROAR...

SENSORY DELIVERIES 2020

VOL 5  
-  
2018  
/ 25



OUR PLAYWORKERS DELIVERED SENSORY PLAY TRAYS TO FAMILIES WHO WERE SHIELDING OR ISOLATED DURING LOCKDOWN. CHILDREN WERE ABLE TO PLAY WITH A PLAYWORKER AND PARENTS HAD A CHAT WITH AN ADULT.

# ROCK & ROLL ● ● ●

VESTIBULAR PLAY PACKS 2020



V O 5  
L 2 0  
/ 1 8  
2  
5

FOR THE CHILDREN WHO LOVE TO MOVE, BEING STUCK INDOORS WAS EXTREMELY HARD. MANY CHILDREN RECEIVED SENSORY ACTIVITY PACKS DELIVERED TO THEIR HOMES DURING LOCKDOWN.

# ZOOM...

ONLINE PARTIES 2020



ITS FAIR TO SAY THAT NO EVERYONE LIKES ONLINE ACTIVITIES. BUT MANY DID AND WE HAD SO MUCH FUN HOSTING SMALL, SIMPLE, MAKATON SIGNED ADVENTURES. FOR SOME THIS WAS THEIR LIFELINE ON A RAINY DARK WINTER DAY.



## K'S STORY

K and his mum started coming to Incredible Kids after a friend originally recommended Incredible Kids. K's mum told us: "We immediately knew we had found a home from home. We left already feeling excited at attending our next session. We both felt welcomed by the staff. They greeted us with warm smiles and made us feel instantly included and a valued part of Incredible Kids. I chatted to the supervisor who was able to signpost me for further support services if I felt these could be useful. I had that instant feeling of belonging to a lovely supportive and understanding community who I could meet both face to face and online too."

## **Public benefit**

In setting our objectives and planning our activities our Trustees have given careful consideration to the Charity Commission's general guidance on public benefit. This report outlines how our performance during the year has benefitted the public.

## **Contribution made by volunteers**

Set up by parents and volunteers in 2012, our volunteers are at the centre of Incredible Kids alongside the families who visit us. Most volunteers are also users of the charity and we work hard to encourage parents and carers to volunteer within the charity.

In 2020, our volunteers were at the heart of our response to Coronavirus event planning by setting up our new online booking system, developing our newsletters to families, adding content to our website to support families and creating informative documents for our families as emergency SEND advice changed. New volunteers responded to our lockdown cause and came on board to fill more roles.

Volunteers help to run our session by playing alongside the children, providing support to parents and carers, assisting in our kitchen, our Incredible Bakers bake cakes for our families, support parents and carers, shop for us, administer our website and social media, plan our sessions, do washing, design logos, clean, raise money, recycle, publicise the charity, produce our accounts, make policies and implement them, troubleshoot, gather feedback, pay our staff, manage our staff and much more.



## **TRUSTEE SKILLS**

The Board of Trustees keep the skills required of the board under review throughout the year. In the event that a trustee retires or additional trustees are required, the board considers the recruitment of new trustees. When recruiting new trustees the board looks for individuals with skills and experience which are likely to be of value to the charity. If there is likely to be support for an applicant, initial contact will be made with the individual to ascertain both their suitability and their interest in a vacancy. Any new trustee is formally appointed by the Trustees.

During 2020/21 Incredible Kids actively recruited new trustees and they joined Incredible Kids shortly after the end of the financial year bringing skills in marketing, finance, and fundraising.

## **TRUSTEE SELECTION METHODS**

When selecting trustees, the charity has due regard for the skills, knowledge and experience needed for the effective administration of the CIO. New trustees are appointed by existing trustees. Apart from the first trustees, all trustees are appointed for a term of three years. Trustees may be appointed for a maximum of three, three years terms after which they must take a break for at least one year.

All Trustees are required to be Christians and sign the Nicene Creed as a statement of their faith. All other roles within the charity are open to those of any faith or no faith and volunteers agree to abide by Nolan's principles of public life Selflessness, Integrity, Objectivity, Accountability, Openness, Honesty, Leadership

## **POLICIES AND PROCEDURES ADOPTED FOR THE INDUCTION AND TRAINING OF TRUSTEES**

The charity reviews recruitment, policies and procedures for training and appointing new trustees during each year. All trustees complete an application form, undertake an Enhanced Adult and Child DBS check, provide two references and are interviewed by a panel from the charity. All trustees receive a copy of the trustee handbook from AFVS and we are developing a new trustee Induction.

# RISK

The Trustees maintain an organisational risk assessment and consider this regularly at Trustee meetings. The risk strategy identifies the core risks the charity faces, the likelihood of each risk occurring, the impact of each risk should it occur and then an overall risk score for each risk. This shows trustees the main areas of risk that they should develop systems to mitigate.

The principal risk facing the charity under current circumstances is the risk of being unable to secure sufficient funds to run our service. Incredible Kids was successful in securing an increase in funding over the last year and increasing our reserves. Our investment in a part-time fundraiser has helped to mitigate this risk and the running costs of the charity are predictable and relatively low due compared to other similar charities. This is due to the charitable model which we operate under which is high in volunteer support and low in administrative costs.

Another significant risk facing Incredible Kids is in relation to the provision of a venue from which to operate. Incredible Kids was able to secure an outdoor venue during lockdown and is actively pursuing a dedicated space from which to operate full time.



# FINANCIAL REVIEW

This was a challenging year that required a robust financial response. As ever, we are eternally grateful to all of our funders whose contributions allowed our essential service to continue.

We raised £68,201.17 during the course of this financial year, just under £10,000 more than we originally budgeted for.

Because we did not furlough our staff, our financial needs in relation to personnel did not change much. However, other costs relating to the way we operate and the necessary changes due to the pandemic did increase. For example, our phone costs tripled as we put in calls to families during lockdown, and the cost of toys and activities more than doubled as we put together activity packs and ran face-to-face facilitated messy play sessions as restrictions eased. We also saw our costs increase as we moved into The Vench in August.

In terms of grants, this was the first full financial year we have had a professional fundraiser on the team, and it certainly helped in terms of securing necessary additional funding, and finding funder that could help us during the pandemic period.

In addition to our ongoing grants from the Sobell Foundation, the Burden Trust and Children In Need, we also received £6000 from the Rix Thompson Rothenberg Foundation to help with running costs, £6500 from the Garfield Western Trust and £5000 from the Quartet Emergency Coronavirus Response fund. We also had smaller but just as valued support from the Woodward Trust, Merchant Venturers Foundation, John James Foundation, Leidos, Skipton and the Felicity Wilde Trust.

In addition, we made many new contacts with trusts who were not able to fund us immediately but want to keep an open dialogue with us through 2021 and beyond.

Overall, we see that our service is still valued not just by our families, but also by our funders who can see how essential and life changing the support we offer truly is.

# INCREDIBLE FUNDERS



Quartet  
**Community**  
Foundation



**RENISHAW**   
apply innovation™



THE **burden** TRUST



THE  
WOODWARD  
CHARITABLE  
TRUST

Supported by



**BBC**

**Children in Need**



The Sobell  
Foundation

**RIX  
THOMPSON**

Rothenberg  
Foundation



 **FIREHAUS**



 **leidos**

**Incredible Kids**  
**Registered Charity 1151185**

**Statement of Financial Activities to 31st March 2021**

The following accounts have been prepared in accordance with the Statement of Recommended Practice (SORP) issued by the Charity Commission to comply with the Executive Committee's obligations as the trustees of the Charity for keeping accounting records

note2021202120202020  
 £ £ £ £

**Income**

**Subscriptions & Donations**

Donations & Legacies 8,006.50 19,633.81

**Grants**

Restricted 2 49,894.67 9,993.00

Unrestricted 10,300.00 2,400.00

**Total Income**

**68,201.17 32,026.81**

**Expenditure**

**Direct Charity**

Rent & Rates 13,066.05 8,052.25

Insurance 89.00 714.38

Fundraising Costs 126.00 276.94

Advertising/Promotional 321.60 459.99

Training 288.52 533.11

Office/Administration Costs 382.94 519.90

Purchases 7,179.91 4,407.46

Payroll Expenditure 40,576.43 33,736.98

Volunteer Costs 30.27 249.34

**Total Direct Charity Costs**

**62,060.72 48,950.35**

**Other Costs**

**Service Costs**

Reconciliation & Prior year Adjustments 154.05 175.64

Legal & Professional 0.00 545.62

Bank Charges 906.80 318.00

Depreciation 70.74 33.52

**Total Other Costs**

24.99

**Total Expenditure**

**1,156.58 1,072.78**

**Surplus/Deficit**

**63,217.30 50,023.13**

**Funds B/Fwd**

**Total Funds**

**4,983.87 (17,996.32)**

15,425.76 33,422.08

**20,409.63 15,425.76**

**Funded By:**

**Current Account**

**Gold Account**

Refreshments Account 9,886.40 5,397.81

Donations Account 0.01 1,553.94

Debtors 2,000.09 827.52

Paypal 7,838.86 7,007.81

Other Assets 368.07 368.07

125.96 55.38

**Total Funds Carried Forward**

190.24 215.23

**20,409.63 15,425.76**

### **Notes to the Accounts**

1. The accounts are prepared on a receipts and payments basis and no account has been taken of accrued/prepaid income or expenditure
2. Detailed Restricted Income/Expenditure report

### **Independent Examiners Report to the Trustees of Incredible Kids**

#### **Respective responsibilities of Trustees and Examiner**

The charity's trustees are responsible for the preparation of the accounts. The charity's trustees consider that an audit is not required for this year under section 144 of the Charities Act 2011 (the charities act) and that an independent examination is needed.

It is my responsibility to:

- examine the accounts under section 145 of the Charities Act
- to follow the procedures laid down in the general Direction given by the Charity Commission (under section 145(5)(b) of the Charities Act) and
- to state whether particular matters have come to my attention

#### **Basis of independent examiners statement**

My examination was carried out in accordance with general directions given by the Charity Commission. An examination includes a review of the accounting records kept by the charity and a comparison of the accounts presented with these records. It also includes consideration of any unusual items or disclosures in the accounts, and seeking explanations from the trustees concerning any such matters. The procedures undertaken do not provide all the evidence that would be required in an audit, and consequently no opinion is given as to whether the accounts present a 'true and fair' view and the report is limited to those matters set out in the statement below,

#### **Independent Examiners Statement**

In connection with my examination, no matter has come to my attention:

1. which gives me reasonable cause to believe that in, any material respect, the requirements to keep accounting records in accordance with section 130 of the Charities Act to prepare accounts which accord with the accounting records and comply with the with the accounting requirements of the Charities Act have not been met; or
2. to which, in my opinion, attention should be drawn in order to enable a proper understanding of the accounts to be reached.

Michael J Bowles

M J Bowles  
MJB Accounting

## **2019/2020 RESERVES**

Incredible Kids gives due regard to the level of reserves that it requires to ensure future service delivery. Incredible Kids has actively increased its level of reserves this year and has three months running costs in reserve.

# ABOUT US



## INCREDIBLE KIDS STRUCTURE

**CIO** CIO FOUNDATION MODEL (CIO)

**4** TRUSTEES

- 1 Jennie Prewett Chair 
2. Sandie Davis
3. Sharon Moffatt resigned 18th Oct 2020
4. Kantish Bhalerao

---

**13** REGISTERED CHARITY 1151185



---

Supported by  
 **BBC**  
**Children in Need**


 [CONTACT@INCREDIBLEKIDS.ORG.UK](mailto:CONTACT@INCREDIBLEKIDS.ORG.UK)

## DECLARATIONS

THE TRUSTEES DECLARE THAT THEY HAVE APPROVED THE TRUSTEES' REPORT ABOVE.

JENNIE PREWETT SANDIE DAVIS  
SHARON MOFFAT KANTISH BHALERAO  
SIGNED ON BEHALF OF THE CHARITY'S TRUSTEES

 INCREDIBLE KIDS  
BOURNE CHRISTIAN CENTRE  
WATERS ROAD  
KINGSWOOD  
BRISTOL  
BS15 8BE

 [WWW.INCREDIBLEKIDS.ORG.UK](http://WWW.INCREDIBLEKIDS.ORG.UK)