

MANVERS LAKE AND DEARNE VALLEY TRUST LTD

England & Wales · Charity number 1150159

Details

Status	Registered
Legal form	Charitable company
Company number	07521620
Registered	2012-12-13
Register	View on the Charity Commission register

Contact

Address	The Boat House Station Road Wath Upon Dearne Rotherham South Yorkshire S63 7DG
Phone	01709878984
Email	info@manverslaketrust.co.uk
Website	www.manverslaketrust.co.uk

Activities

Objects: TO PROMOTE COMMUNITY PARTICIPATION IN HEALTHY RECREATION BY PROVIDING FACILITIES FOR CANOEING, CYCLING, RUNNING, SAILING, SWIMMING, TRIATHLON AND WINDSURFING TO THE COMMUNITIES OF ROTHERHAM, DONCASTER, BARNSELY AND THE SURROUNDING AREAS.

Activities: The Trust promotes community participation in healthy recreation by providing facilities for: Canoeing, Cycling, Running, Sailing, Dragon Boating, Swimming, Triathlon, Windsurfing, Angling and Model Boating to the communities of Rotherham, Doncaster, Barnsley and the surrounding areas.

Classification

- **How:** Provides Buildings/facilities/open Space
- **What:** Education/training, The Advancement Of Health Or Saving Of Lives, Amateur Sport, Environment/conservation/heritage, Recreation
- **Who:** Children/young People, Elderly/old People, People With Disabilities, The General Public/mankind

Geography

- **Area of benefit:** ROTHERHAM, DONCASTER, BARNSELY AND THE SURROUNDING AREAS.
- Throughout England

Finances

Period end	Income	Expenditure	Assets	Employees
2025-01-31	£347,189	£266,288	-	-
2024-01-31	£282,000	£188,000	-	-
2023-01-31	£265,000	£160,000	-	-
2022-01-31	£273,006	£127,317	-	-
2021-01-31	£175,986	£76,063	-	-

Trustees

Name	Role	Appointed
Alan Atkin		2022-09-22
Chris Wordsworth		2017-09-11
MARK BENTON		2012-09-27
Mark Toller		2021-06-24
Paul William Owen		2023-01-20
RNN Group Ltd		2022-09-22

MANVERS LAKE AND DEARNE VALLEY TRUST LTD

England & Wales - Charity number 1150159

Accounts



Accountancy Solutions

Manvers Lake and Dearne Valley Trust Limited

Financial statements for the
year ended 31st January 2025

Charity number: 1150159
Registered England and Wales

Company number: 07521620
Company limited by guarantee

Manvers Lake and Dearne Valley Trust Limited
Contents of the financial statements
for the year ended 31st January 2025

	Page
Administrative Details	1
Directors (Trustees Report)	2 – 5
Independent Examiners Report	6
Income and Expenditure Account	7
Balance Sheet	8
Notes to the accounts	9 - 12

Manvers Lake and Dearne Valley Trust Limited
Administrative details
for the year ended 31st January 2025

Registered Charity number	1150159
Registered Company number	07521620
Directors (Trustees)	Christopher Hawkesworth Mark Benton Christopher Wordsworth Debra Adams Alan Atkin Paul Owen Stephen Toller
Company Secretary	Mark Benton
Principle address	The Boat House Station Road Rotherham Station Road S63 7DG
Bankers	HSBC Bank Plc. 35 College St, Rotherham S65 1AF
Independent Examiner	Heera Singh FMAAT HSL Accountancy Solutions Enterprise House 61a Carr House Doncaster DN1 2BY

Manvers Lake and Dearne Valley Trust Limited
The Directors (trustees) present their annual report
for the year ended 31st January 2025

The trustees, are also directors of the charity for the purposes of the Companies Act, submit their annual report and financial statements for the year ended 31st January 2025.

Exemptions

The trustees have taken advantage of the exemptions available to small companies, including the audit exemption (see statement on balance sheet).

Structure, governance and management

The Organisation is operated under the rules of its memorandum and articles of association, adopted on 8th February 2011 and last updated on 12th December 2012.

Organisational structure

The organisations is a company limited by guarantee, and has no share capital. The Directors liability is limited to £1. The organisation also a registered Charity from 13th December 2012. The overall management of the organisation is the responsibility of the trustees who are appointed under the terms of the governing document.

Aims and objectives

To promote community participation in healthy recreation in safe and pleasant surroundings in an environmentally sustainable manner by providing facilities for canoeing, cycling, running, sailing, swimming, angling, triathlon, quadrathlon, stand-up-paddle boarding [SUP], model boating, and windsurfing to the communities of Rotherham, Doncaster, Barnsley and the surrounding areas.

Public Benefit Statement

The trustees of Manvers Lake and Dearne Valley Trust ["Trust"] confirm that they have complied with their duty under section 17(5) of the Charities Act 2011 to have regard to the Charity Commission's guidance on public benefit and that the public benefit requirement has informed the activities of the Trust in the year to January 31st 2023.

The Manvers Lake and Dearne Valley Trust Ltd [Trust] is the umbrella organisation of all Boathouse, Manvers Lake and most Parkland activities. To this end it has close and common links with 3 other limited liability companies all of which are "Not for profit" companies without a share holding and limited by guarantee. Any surpluses from these companies are donated to the Trust. The Trust has close links to the community through its partnership with The Dearne Valley College (RNN Group) and Rotherham Borough Council both of whom have board voting representation.

Summary of Main Activities

The core activities of the Trust are:

- Maintaining and developing the Boathouse, Manvers Lake and surrounding park land.
- Ensuring that the general public can use the permissive paths and other lands surrounding the lake in a clean, clear and safe manner.
- Delivery of a comprehensive year-round programme of sporting, fitness and general well-being activities.
- Providing an Outreach Programme to schools and other group users of our facilities.
- Offering support and advice to the public on matters related to water sports and other associated sports.
- Offering a venue for education and training for all 3 "Blue light" services, the NHS, Universities, Companies and Educational establishments.

Our philosophy is to offer access to all regardless of personal circumstances, race, gender, ability, or faith. The Trust operates mainly in Rotherham, Doncaster, and Barnsley. However, visitors do come from further afield. The weekly Club programme is open to all members and some of the weekly program is open to non-members.

The Lake and the Boathouse provide a focus for our activities and it is estimated that the lake attracted over 400,000 visitors last year with most taking part in some form of active recreation. Manvers Waterfront Boat Club members now number nearly 2400. These and other Boathouse users account for over 55,000 of visits. Members use the facilities for canoeing, kayaking, SUP [stand-up-paddle-boarding], dragon boating, cycling, running, sailing, open water swimming, triathlon, quadrathlon, angling, model boating, walking and windsurfing, plus, associated social, training and educational sessions. Fees are charged for club membership, but these are kept at a low level.

The Trust wishes to be an example of best practice and to this end it is affiliated via the linked Manvers Waterfront Boat Club [Club] and is signed up to the policies of: Sport England, British Canoeing, British Triathlon, British Swimming, Royal Yachting Association, The Angling Trust, British Athletics, British Quadrathlon Association, British Dragon Boating Association [BDA], AALA and RoSPA.

Summary of Main Activities (Continued)

The Trust and Club are supported by and have close links with Sport England, South Yorkshire County Sports Partnership, the Environment Agency, The Canal and River Trust, Rotherham, Barnsley and Doncaster Councils, MPs and Councillors, The South Yorkshire Police, Ambulance and Fire & Rescue Services and regional NHS.

The Trust and Club provide training courses for members and volunteers in, for example: coaching, disability awareness, Child Protection, and Health and Safety issues. Staff and key volunteers are DBS checked.

Key achievements for 2024- 25

British Canoeing lease surrender.

At the request of the Trust the board of British Canoeing agreed to surrender the lease then transfer and merge the British Canoe Union 2008 Lease of the lake and original boat house into the ownership of the Trust. Legal details are on-going for all matters to be completed during 2024.

Hoover Homes Land Exchange.

The Trust and Hoover homes that are developing the old garden centre agreed to transfer a couple of parcels of land. This will be completed when the development of the homes are finished when a triangle of land (green space) will be handed over to the Trust.

Manvers White Water Recreational and Rescue Channel

The Trust has developed plans in partnership with South Yorkshire Fire and Rescue Service to build the above around the south bay of the lake. The project is actively being supported by a number of key players and good progress is being made.

Boat Store Annex Phase 5 and 6

Planning permission was granted for the development for additional space in accordance with the planning permission on the ground floor and a change of use of the first floor to form a meeting room/social space. Phase 5 and 5a (underfloor heating) have been completed and we look forward to planning and delivering Phase 6.

Land and buildings ownership and management

The Freehold of various plots of land to the North of Manvers Way, the South side of the Lake between the RSPB in the West to Station Road in the East, were transferred to the Trust in 2015. The Trust maintains the land and manages the collection of an "Estate" service charge and Freehold levy from applicable leasees. The money raised is a ring-fenced contribution to the on-going maintenance of specific geographical areas and facilities open to the public. Footfall remains high but as a consequence a significant amount of additional resource has had to be put into not only dealing with practical site issues such as grass cutting, litter removal, dog faeces, reed removal, bridge repairs, and anti-social behaviour. We have also managed a number of ongoing leaseholder and residents queries.

Estate services delivery.

Delivery of "Estate" services is mainly achieved by working in partnership with volunteers from the club, other organisations such as local litter picking groups and Manvers Lake and Dearne Valley Trading Ltd. "Trading" the operational delivery arm of the Trust. We all work together to ensure the lake and surrounding parkland is well maintained, safe and kept clean and tidy. We strive to deliver good value for money for managing this space for the local community and lake visitors.

One on-going big issue is site inconsistencies. It should not be forgotten that this whole site was remediated and regenerated out of the Manvers Main Colliery and Wath coking works. Though now decontaminated and fully built up there is a historical legacy of leases and freeholds. Working with all appropriate partners the Trust is attempting, on a once and for all basis, to identify anomalies to clean up, merge and rectify the land ownership. This effort has proved to be more complex, lengthy and costly than anticipated and though much has been achieved it will be ongoing for at least the coming year.

Manvers Lake and Dearne Valley Trust Limited
The Directors (trustees) present their annual report
for the year ended 31st January 2024

Key achievements for 2024- 25

Visitors to Manvers Lake

The number of visitors to Manvers Lake and the reason for their visits are recorded daily. Using these statistics, it is possible to estimate that the lake has attracted approximately 500,000 visitors during the year.

We record the number of people that use the building, this includes club member visits (40K), café users (50k), people that hire rooms etc (10k).

All that the Trust and its linked companies have achieved last year would not have been possible without the support of employees, the club members, volunteers, donors, affiliates, local residents, committee, directors and trustees.

Environment Agency and blue light services

These continue to use the lake for testing equipment and training using the lake environment. Also Manvers saw an increase in water rescue training in partnership of ISAR Training using the lake and rooms.

AALA

The Trust provides Outdoor Adventurous Activities to young persons and holds the requisite AALA license so that it can arrange activities for under 18s who are not members of the Club.

Websites

The Trust and the Club operates three websites. These continue to develop and offer both club members and the general public information.

Café

The café provides continues light snacks and drinks to Boathouse and lake users, sales continue to increase .

Dearne Valley College – RNN Group

The strategic partnership with the College continues to grow and develop. The Trust sees this partnership and its future as extremely beneficial to both parties. The rural environment of the lake compliments the urban environment of the College. Hence the College can offer additional education and sporting opportunities to their students and the Trust and the Club can offer a pathway into participation coaching and management of several sports.

Land Ownership

The Trust now has the Freehold ownership of Manvers Lake, the southside of the lake and land around the Boathouse (coloured pink on the Map below).

An “Estate” levy is paid by residents and business occupiers towards maintenance of this area, Known as “The Southside”. The Trust annually reports and publishes an abstract of these accounts to tenants and hosts an annual budget review meeting each autumn.

Plans for the future

There is still much work to be done by the Trust. Grant aid nationally appears to be reducing, hence limiting potential grant aid for projects that we wish to undertake. Therefore patience, saving and fund raising is needed in equal measure.

Reserve Policy

Given the relative stability and wide spread of income the trustees feel that a minimum of 3 months running costs would be sufficient to be kept in reserve. We have achieved this and will continue with this policy. Reserves during the year have increased to 4 months and will be subject to annual and seasonal review and will be increased further as appropriate to reflect changes in turnover and liabilities.

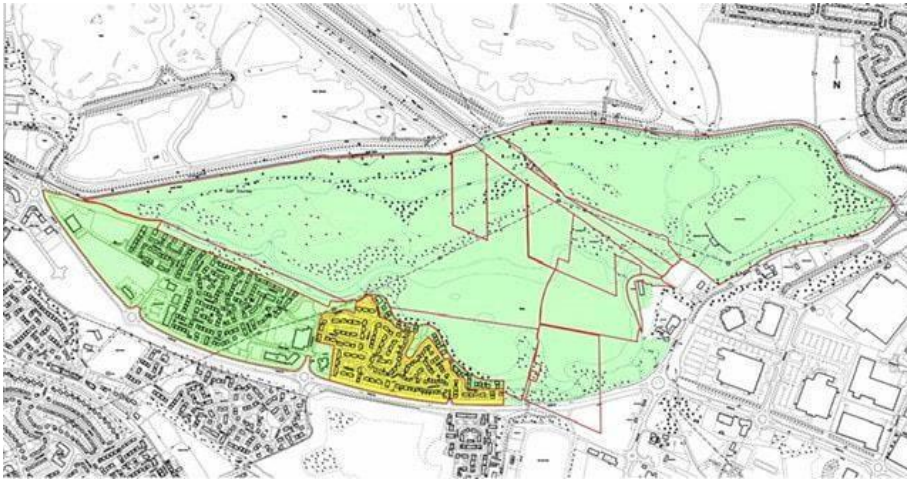
Financial review of the year

During the year the trustees feel the organisation has performed well.

Risk management

The trustees have assessed the major risks to which the charity is exposed and are satisfied that adequate and appropriate systems are in place to mitigate the exposure to both financial and other risks.

Freehold Map for Identification only.



Green– Trust land Freehold.
Yellow - Avon Ground Rents

Residential Leasehold Plans.



Note the Harron and Strata plots is now in trust ownership.

Land in Trust Ownership



Manvers Lake and Dearne Valley Trust Limited
The Directors (trustees) present their annual report
for the year ended 31st January 2025

Statement of Directors and Trustees' responsibilities

The trustees (who are also the directors of the Company for the purposes of company law) are responsible for preparing the Trustees' Annual Report and the financial statements in accordance with applicable law and United Kingdom Accounting Standards (United Kingdom Generally Accepted Accounting Practice).

Company law requires the trustees to prepare financial statements for each financial year which give a true and fair view of the state of affairs of the charitable company and the group and of the incoming resources and application of resources, including the income and expenditure of the charitable company and the group for that period. In preparing these financial statements, the trustees are required to:

- select suitable accounting policies and then apply them consistently;
- observe the methods and principles in the charities SORP;
- make judgements and estimates that are reasonable and prudent;
- state whether applicable UK Accounting Standards have been followed, subject to any material departures disclosed and explained in the financial statements;
- prepare the financial statements on the going concern basis unless it is inappropriate to presume that the charitable company will continue in business.


The trustees are responsible for keeping proper accounting records which disclose with reasonable accuracy at any time the financial position of the charitable company and of the group and enable them to ensure that the financial statements comply with the Companies Act 2006. They are also responsible for safeguarding the assets of the charitable company and the group and hence for taking reasonable steps for the prevention and detection of fraud and other irregularities.

The trustees declare that they have approved the above report. Signed on behalf of the trustees

Signed: 

Date: 16/05/2025

Name and position: Chris Hawkesworth, Director

Signed: 

Date: 16/05/2025

Name and position: Mark Benton, Director

**Independent examiners report to the trustees of
Manvers Lake and Dearne Valley Trust Limited
for the year ended 31st January 2025**

I report on the financial statements of the Manvers Lake and Dearne Valley Trust Limited for the period ended 31st January 2025 which are set out on pages 8 to 13.

Respective responsibilities of trustees and examiner

The charity's trustees (who are also the directors of the Company for the purposes of company law) are responsible for the preparation of the accounts. The charity's trustees consider that an audit is not required for this year under section 144(2) of the Charities Act 2011 (the 2011 Act) and that an independent examination is needed.

Having satisfied myself that the charity is not subject to audit under company law and is eligible for independent examination, it is my responsibility to:

- examine the accounts under section 145 of the 2011 Act;
- follow the procedures laid down in the general Directions given by the Charity Commission under section 145(5)(b) of the 2011 Act; and
- state whether particular matters have come to my attention.

Basis of independent examiner's report

My examination was carried out in accordance with the general Directions given by the Charity Commission. An examination includes a review of the accounting records kept by the charity and a comparison of the accounts presented with those records. It also includes consideration of any unusual items or disclosures in the accounts, and seeking explanations from you as trustees concerning any such matters. The procedures undertaken do not provide all the evidence that would be required in an audit and consequently no opinion is given as to whether the accounts present a "true and fair view" and the report is limited to those matters set out in the statement below.

Independent examiner's statement

In connection with my examination, no matter has come to my attention:

1. which gives me reasonable cause to believe that, in any material respect, the requirements:

- to keep accounting records in accordance with section 386 of the Companies Act 2006; and
- to prepare accounts which accord with the accounting records and comply with the accounting requirements of section 396 of the Companies Act 2006 and with the methods and principles of the Statement of Recommended Practice: Accounting and Reporting by Charities:

have not been met; or

2. to which, in my opinion, attention should be drawn in order to enable a proper understanding of the accounts to be reached.



Mr Heera Singh FMAAT
HSL Accountancy Solutions Ltd
Enterprise House
61a Carr House
Doncaster
DN1 2BY

Date: 19th May 2025

Manvers Lake and Dearne Valley Trust Limited
Statement of Financial Activities (Incorporating the Income and Expenditure Account)
for the year ended 31st January 2025

	Unrestricted Funds	Restricted Funds	Total 2025	Total 2024
	£	£	£	£
Income and endowments from:				
Grants and donations	253,646	0	253,646	173,475
Charitable activities	89,693	0	89,693	98,910
Other	3,850	0	3,850	9,152
Total	347,189	0	347,189	281,537
Expenditure on:				
Raising funds	3,488	0	3,488	3,488
Charitable activities	262,800	3,262	266,062	185,361
Other				
Total	266,288	3,262	269,550	188,848
Net income/(expenditure)	80,901	-3,262	77,639	92,689
Total funds brought forward	650,894	326,208	977,102	884,413
Gain/loss on revaluation of fixed assets	1,000,000	0	1,000,000	0
Total funds carried forward	1,731,795	322,946	2,054,741	977,102

The Statement of Financial Activities includes all gains and losses in the year and therefore a statement of total recognised gains and losses has not been prepared. All the above amounts relate to continuing activities.

Manvers Lake and Dearne Valley Trust Limited
Balance sheet
As at 31st January 2025

	Notes	2025 £	2024 £
Fixed Assets		1,852,589	846,952
Current Assets			
Debtors		85,273	75,944
Cash at bank & in hand		<u>186,567</u>	<u>124,298</u>
		271,840	200,243
Current Liabilities			
Creditors - amounts due within one year		<u>-20,700</u>	<u>-21,105</u>
Net current assets		251,140	179,138
Long Term Liabilities			
Creditors - amounts due after one year		-48,987	-48,987
Net assets		<u>2,054,741</u>	<u>977,102</u>
Funds of the company			
Unrestricted Funds		1,731,795	650,894
Restricted Funds		<u>322,946</u>	<u>326,208</u>
Total funds		<u>2,054,741</u>	<u>977,102</u>

For the year ended 31st January 2025, the company is entitled to the audit exemption under section 477 (2) of the Companies Act 2006.

The members have not required the company to obtain an audit in accordance with section 476 of the Companies Act 2006.

The directors acknowledge their responsibilities for:

- ensuring the company keeps accounting records which comply with section 386; and
- preparing accounts which give a true and fair view of the state of affairs of the company as at the end of the financial year, and its profit or loss for the financial year, in accordance with the requirement of the companies Act 2006 relating to accounts, so far as is applicable to the company.

These accounts have been prepared in accordance with the provisions applicable to companies subject to small companies' regime.

The directors declare that they have approved the accounts above.

Signed on behalf of the company's directors:

Signed: 

Date: 16/05/2025

Name and position: Chris Hawkesworth, Director

Signed: 

Date: 16/05/2025

Name and position: Mark Benton, Director

1. Accounting policies

1.1.1. Basis of preparation

These accounts (financial statements) have been prepared under the historic cost convention, with items recognised at cost or transaction value, unless otherwise stated in the relevant note(s), in accordance with:

- The Charities Act 2011
- The Companies Act 2006
- The Financial Reporting Standard applicable in the UK and the Republic of Ireland: FRS102
- Accounting & Reporting by Charities: Statement of Recommended Practice (Charities SORP FRS102) (effective January 2015)

1.1.2. The charity meets the definition of a public benefit entity as defined by FRS 102

1.1.3. The trustees consider that there are no material uncertainties about the charity's ability to continue as a going concern.

1.2. Incoming resources

These are included in the Statement of Financial Activities. Incoming resources are recognised when:

- the company becomes entitled to the resources
- the trustees are virtually certain they will receive the resources; and
- the monetary value can be measured with sufficient reliability

Where incoming resources have related expenditure (as with fund-raising or contract income) the incoming resources and related expenditure are reported gross in the Statement of Financial Activities.

Grants and donations are only included in the Statement of Financial Activities when the company has unconditional entitlement to the resources.

Contractual income is only included in the Statement of Financial Activities once the related goods or performance related services have been delivered. Investment income is included in the accounts when receivable.

1.3. Expenditure

Expenditure is charged to the Statement of Financial Activities on an accruals basis, inclusive of any VAT which cannot be recovered. Expenditure is classified under headings that aggregate all costs related to that category. Where costs cannot be directly attributed to particular headings they have been allocated to activities on a basis consistent with the use of resources.

Charitable expenditure comprises those costs incurred in the delivery of the charity's activities and services for its beneficiaries, including both direct and support costs. The expenditure has been analysed but usage. Professional fees include those costs associated with meeting constitutional and statutory requirements, including Accountancy fees.

1.4. Fund accounting

Restricted funds are funds received from donors which are subject to restrictions on the purposes for which they may be used of which have been raised for a specific project. Unrestricted funds are those where there are no externally imposed restrictions. These include funds freely available to the charity for expenditure or appropriation to reserves for internally designated purposes.

1.5 Assets

Tangible assets are capitalised if they can be used for more than one year, and cost at least £250. They are valued at cost, or, if gifted, at the value to the company on receipt.

The rates applicable are;

Kitchen furniture and equipment	20% Straight line
Furniture	20% Straight line
Land and buildings	1% Reducing balance

1.6. Debtors

Debtors are recognised at the settlement amount due. Prepayments are valued at the amount prepaid.

1.7. Cash

Cash comprises bank deposits repayable on demand and any short-term highly liquid investments with a maturity date of three months or less from the date of acquisition or opening of the deposit or similar account.

1.8. Creditors

Creditors are recognised where the charity has a present obligation resulting from a past event that will probably result in the transfer of funds to a third party and the amount due to settle the obligation can be measured or estimated reliably. Creditors are normally recognised at their settlement amount, usually the invoice amount. Accrued charges are normally valued at their settlement amount.

1.9. Taxes

The company is not VAT registered. As a Charity the company is exempt from taxation on income and gains falling within section 505 of the Taxes Act 1988 or s256 of the Taxation of chargeable gains Act section 505 of the Taxes Act 1988 or s256 of the Taxation of chargeable gains Act 1992 to the extent that these are applied to its charitable objects.

2. Income

	General Fund	Restricted Fund	Total 2025	Total 2024
	£	£	£	£
Income from:				
Affiliation fees	12,000	0	12,000	12,000
Car park income	55,158	0	55,158	53,528
Donations and grants	241,646	0	241,646	161,475
Electricity generation	6,629	0	6,629	8,477
Facility hire and events	27,906	0	27,906	36,905
Other income	3,850	0	3,850	9,152
Total	347,189	0	347,189	281,537

3. Expenditure on

	General Fund	Restricted Fund	Total 2025	Total 2024
	£	£	£	£
Expenditure on:				
Bank charges	166	0	166	239
Building maintenance and development	4,948	0	4,948	21,793
Building security	2,746	0	2,746	1,371
Building sundries	1,921	0	1,921	0
Car parking machine	4,273	0	4,273	1,241
Cost of raising funds	1,333	0	1,333	5,228
Depreciation	10,466	3,262	13,728	11,854
Donations	1,000	0	1,000	0
Sundry	199	0	199	0
Equipment, repairs and renewals	15,866	0	15,866	4,497
Insurances	12,692	0	12,692	2,313
Office costs	2,683	0	2,683	994
Professional fees	73,420	0	73,420	34,723
Telephone and internet	3,334	0	3,334	2,210
Utilities	33,742	0	33,742	21,938
Volunteers hours	97,500	0	97,500	80,000
Volunteer expenses	0	0	0	449
Total	266,288	3,262	269,550	188,848

Manvers Lake and Dearne Valley Trust Limited
Notes to the financial statements
for the year ended 31st January 2025

4. Tangible fixed assets

	Land & Buildings	General equipment	Total
	£	£	£
Cost	897,917	24,726	922,643
Additions	1,003,644	15,721	1,019,365
At 31st January 2025	<u>1,901,561</u>	<u>40,447</u>	<u>1,942,008</u>
Depreciation			
At 1st February 2024	52,547	23,144	75,691
Charge this period	8,415	5,313	13,728
Disposals			
At 31st January 2025	<u>60,963</u>	<u>28,457</u>	<u>89,419</u>
Net book value at 31st January 2025	<u>1,840,599</u>	<u>11,990</u>	<u>1,852,589</u>
Net book value at 31st January 2024	<u>845,370</u>	<u>1,582</u>	<u>846,952</u>

5. Debtors and creditors

	2025	2024
	£	£
Debtors		
Prepayments	0	0
Trade debtors	85,273	75,944
	<u>85,273</u>	<u>75,944</u>
Creditors - due within one year		
Trade creditors	-700	-700
Loan repayment*	-20,000	-20,405
	<u>-20,700</u>	<u>-21,105</u>
Creditors - due after one year		
Loan repayment*	<u>-48,987</u>	<u>-48,987</u>

6. Movement of funds

	Balance at 01/02/2024	Incoming Resources	Expended Resources	Transfers	Balance at 31/01/2025
	£	£	£	£	£
Unrestricted funds					
General funds	650,894	1,347,189	-266,288	0	1,731,795
Restricted funds					
Veolia Environmental Trust	32,000	0	-320	0	31,680
Coalfields Regeneration Trust	22,835	0	-228	0	22,607
Sport England	219,220	0	-2,192	0	217,028
Key Fund	27,403	0	-274	0	27,129
Key Fund 2023	24,749	0	-247	0	24,501
Total funds	<u>977,102</u>	<u>1,347,189</u>	<u>-269,550</u>	<u>0</u>	<u>2,054,741</u>

6. Movement of funds (continued)

Veolia Environmental Trust funding was towards the building foundations.

Coalfields Regeneration Trust, Coalfields Community Enterprise Award funding was towards the construction costs of the new building

Sport England funding was a contribution towards the new building.

Key Fund who were working on behalf of "Power to Change" who are funded by The Big Lottery Fund– this was a grant towards completion of the building.

Key Fund 2023 – this was a grant towards Phase 5 of the building works.

The above grant expenditure has been capitalised and will be reduced by the charge of depreciation on an annual basis

7. Staff costs

During the financial year there were no employees. Independent contractors were engaged as and when required.

8. Trustees remuneration, benefits and expenses

Trustees received no remuneration or benefits in this period. All amounts reimbursed to trustees were in respect of expenses properly incurred.

9. In-kind contribution and third party relations

Manvers Waterfront Boat Club Limited have supported the establishment of Manvers Lake and Dearne Valley Trust Limited (The Trust), and continue to support its development. During the year the Club donated £146,250 to the Trust.

During the period of these accounts, Manvers Lake and Dearne Valley Trading Limited (Co. number 08239180) did not make any repayments against the loan given to them by the Trust. £84,191 is still owed to the Trust. There is no interest to be calculated on the loan and repayments are flexible. The terms of the loan will be reviewed annually.

9. In-kind contribution and third party relations

During the period of these accounts, the Trustees recognise the support of their Volunteer. The value of their support amounts to £97,500 of donated time.

10. Building development and land ownership

The trust now own the boathouse that was previously owned by the BCU. The Board at the BCU have surrendered their lease to the Trust together with the disposal of the Boat House to the Trust for the nominal value of £100 plus VAT.

In early 2015 TCN (uk) Ltd having developed/built out the site, and sold all the plots, wished to exit the site and in doing so they offered the Trust their residual interests in the form of their 999 year lease. This lease also included some unoccupied parcels of land, some public access land and land around the Boat House.

The expenditure that makes up the Levy is a Management Fee, Insurance, plus various onsite maintenance obligations, Litter collection, Grass cutting, hard surfaces, bridges, security and signage being examples of the main TCN (uk) Ltd outgoings.

Using the Fair Value approach, the Trustees have decided that the land has a value and should be shown as an asset of £15,000.

11. Previous year's comparison

Previous year's figures have been included where available.

MANVERS LAKE AND DEARNE VALLEY TRUST LTD

England & Wales - Charity number 1150159

Accounts



Accountancy Solutions

Manvers Lake and Dearne Valley Trust Limited

Financial statements for the
year ended 31st January 2024

Charity number: 1150159
Registered England and Wales

Company number: 07521620
Company limited by guarantee

Manvers Lake and Dearne Valley Trust Limited
Contents of the financial statements
for the year ended 31st January 2024

	Page
Administrative Details	1
Directors (Trustees Report)	2 – 5
Independent Examiners Report	6
Income and Expenditure Account	7
Balance Sheet	8
Notes to the accounts	9 - 12

Manvers Lake and Dearne Valley Trust Limited
Administrative details
for the year ended 31st January 2024

Registered Charity number	1150159
Registered Company number	07521620
Directors (Trustees)	Christopher Hawkesworth Mark Benton Christopher Wordsworth Debra Adams Alan Atkin Paul Owen Stephen Toller
Company Secretary	Mark Benton
Principle address	The Boat House Station Road Rotherham Station Road S63 7DG
Bankers	HSBC Bank Plc. 35 College St, Rotherham S65 1AF
Independent Examiner	Heera Singh FMAAT HSL Accountancy Solutions Enterprise House 61a Carr House Doncaster DN1 2BY

Manvers Lake and Dearne Valley Trust Limited
The Directors (trustees) present their annual report
for the year ended 31st January 2024

The trustees, are also directors of the charity for the purposes of the Companies Act, submit their annual report and financial statements for the year ended 31st January 2024.

Exemptions

The trustees have taken advantage of the exemptions available to small companies, including the audit exemption (see statement on balance sheet).

Structure, governance and management

The Organisation is operated under the rules of its memorandum and articles of association, adopted on 8th February 2011 and last updated on 12th December 2012.

Organisational structure

The organisations is a company limited by guarantee, and has no share capital. The Directors liability is limited to £1. The organisation also a registered Charity from 13th December 2012. The overall management of the organisation is the responsibility of the trustees who are appointed under the terms of the governing document.

Aims and objectives

To promote community participation in healthy recreation in safe and pleasant surroundings in an environmentally sustainable manner by providing facilities for canoeing, cycling, running, sailing, swimming, angling, triathlon, quadrathlon, stand-up-paddle boarding [SUP], model boating, and windsurfing to the communities of Rotherham, Doncaster, Barnsley and the surrounding areas.

Public Benefit Statement

The trustees of Manvers Lake and Dearne Valley Trust ["Trust"] confirm that they have complied with their duty under section 17(5) of the Charities Act 2011 to have regard to the Charity Commission's guidance on public benefit and that the public benefit requirement has informed the activities of the Trust in the year to January 31st 2023.

The Manvers Lake and Dearne Valley Trust Ltd [Trust] is the umbrella organisation of all Boathouse, Manvers Lake and most Parkland activities. To this end it has close and common links with 3 other limited liability companies all of which are "Not for profit" companies without a share holding and limited by guarantee. Any surpluses from these companies are donated to the Trust. The Trust has close links to the community through its partnership with The Dearne Valley College (RNN Group) and Rotherham Borough Council both of whom have board voting representation.

Summary of Main Activities

The core activities of the Trust are:

- Maintaining and developing the Boathouse, Manvers Lake and surrounding park land.
- Ensuring that the general public can use the permissive paths and other lands surrounding the lake in a clean, clear and safe manner.
- Delivery of a comprehensive year-round programme of sporting, fitness and general well-being activities.
- Providing an Outreach Programme to schools and other group users of our facilities.
- Offering support and advice to the public on matters related to water sports and other associated sports.
- Offering a venue for education and training for all 3 "Blue light" services, the NHS, Universities, Companies and

Educational establishments.

Our philosophy is to offer access to all regardless of personal circumstances, race, gender, ability, or faith. The Trust operates mainly in Rotherham, Doncaster, and Barnsley. However, visitors do come from further afield. The weekly Club programme is open to all members and some of the weekly program is open to non-members.

The Lake and the Boathouse provide a focus for our activities and it is estimated that the lake attracted over 400,000 visitors last year with most taking part in some form of active recreation. Manvers Waterfront Boat Club members now number nearly 2400. These and other Boathouse users account for over 55,000 of visits. Members use the facilities for canoeing, kayaking, SUP [stand-up-paddle-boarding], dragon boating, cycling, running, sailing, open water swimming, triathlon, quadrathlon, angling, model boating, walking and windsurfing, plus, associated social, training and educational sessions. Fees are charged for club membership, but these are kept at a low level.

The Trust wishes to be an example of best practice and to this end it is affiliated via the linked Manvers Waterfront Boat Club [Club] and is signed up to the policies of: Sport England, British Canoeing, British Triathlon, British Swimming, Royal Yachting Association, The Angling Trust, British Athletics, British Quadrathlon Association, British Dragon Boating Association [BDA], AALA and RoSPA.

Summary of Main Activities (Continued)

The Trust and Club are supported by and have close links with Sport England, South Yorkshire County Sports Partnership, the Environment Agency, The Canal and River Trust, Rotherham, Barnsley and Doncaster Councils, MPs and Councillors, The South Yorkshire Police, Ambulance and Fire & Rescue Services and regional NHS.

The Trust and Club provide training courses for members and volunteers in, for example: coaching, disability awareness, Child Protection, and Health and Safety issues. Key personnel are DBS checked.

Key achievements for 2023- 24

Freehold Sale.

The Trust has completed the sale of the golf club freehold.

Environment Agency land leased.

The Trust has agreed to continue with the lease from the Environment Agency for approximately 2 km of fishing and boating rights on a stretch of the River Dearne at Darfield and the River Don at Kilnhurst. The water, approximately 2 km at each site includes access to and along the riverbanks.

British Canoeing lease surrender.

At the request of the Trust the board of British Canoeing agreed to surrender the lease then transfer and merge the British Canoe Union 2008 Lease of the lake and original boat house into the ownership of the Trust. Legal details are on-going for all matters to be completed during 2024.

Hooper Homes Land Exchange.

The Trust and Hooper homes that are developing the old garden centre agreed to transfer a couple of parcels of land. This will be completed when the development of the homes are finished when a triangle of land (green space) will be handed over to the Trust.

Manvers White Water Recreational and Rescue Channel

The Trust has developed plans in partnership with South Yorkshire Fire and Rescue Service to build the above around the south bay of the lake. The project is actively being supported by a number of key players and good progress is being made.

Boat Store Annex Phase 5 and 6

Planning permission was granted for the development for additional space in accordance with the planning permission on the ground floor and a change of use of the first floor to form a meeting room/social space. Phase 5 and 5a (underfloor heating) have been completed and we look forward to planning and delivering Phase 6.

Land and buildings ownership and management

The Freehold of various plots of land to the North of Manvers Way, the South side of the Lake between the RSPB in the West to Station Road in the East, were transferred to the Trust in 2015. The Trust maintains the land and manages the collection of an "Estate" service charge and Freehold levy from applicable leasees. The money raised is a ring-fenced contribution to the on-going maintenance of specific geographical areas and facilities open to the public. Footfall remains high but as a consequence a significant amount of additional resource has had to be put into not only dealing with practical site issues such as grass cutting, litter removal, dog faeces, reed removal, bridge repairs, and anti-social behaviour. We have also managed a number of ongoing leaseholder and residents queries.

Estate services delivery.

Delivery of "Estate" services is mainly achieved by working in partnership with volunteers from the club, other organisations such as local litter picking groups and Manvers Lake and Dearne Valley Trading Ltd. "Trading" the operational delivery arm of the Trust. We all work together to ensure the lake and surrounding parkland is well maintained, safe and kept clean and tidy. We strive to deliver good value for money for managing this space for the local community and lake visitors.

One on-going big issue is site inconsistencies. It should not be forgotten that this whole site was remediated and regenerated out of the Manvers Main Colliery and Wath coking works. Though now decontaminated and fully built up there is a historical legacy of leases and freeholds. Working with all appropriate partners the Trust is attempting, on a once and for all basis, to identify anomalies to clean up, merge and rectify the land ownership. This effort has proved to be more complex, lengthy and costly than anticipated and though much has been achieved it will be ongoing for at least the coming year.

Manvers Lake and Dearne Valley Trust Limited
The Directors (trustees) present their annual report
for the year ended 31st January 2024

Visitors to Manvers Lake

The number of visitors to Manvers Lake and the reason for their visits are recorded daily. Using these statistics, it is possible to estimate that the lake has attracted approximately 500,000 visitors during the year.

We record the number of people that use the building, this includes club member visits (40K), café users (50k), people that hire rooms etc (10k).

All that the Trust and its linked companies have achieved last year would not have been possible without the support of employees, the club members, volunteers, donors, affiliates, local residents, committee, directors and trustees.

Environment Agency and blue light services

These continue to use the lake for testing equipment and training using the lake environment. Also Manvers saw an increase in water rescue training in partnership of ISAR Training using the lake and rooms.

AALA

The Trust provides Outdoor Adventurous Activities to young persons and holds the requisite AALA license so that it can arrange activities for under 18s who are not members of the Club.

Websites

The Trust and the Club operates three websites. These continue to develop and offer both club members and the general public information.

Café

The café provides continues light snacks and drinks to Boathouse and lake users.

Dearne Valley College – RNN Group

The strategic partnership with the College continues to grow and develop. The Trust sees this partnership and its future as extremely beneficial to both parties. The rural environment of the lake compliments the urban environment of the College. Hence the College can offer additional education and sporting opportunities to their students and the Trust and the Club can offer a pathway into participation coaching and management of several sports.

Land Ownership

The Trust now has the Freehold ownership of Manvers Lake, the southside of the lake and land around the Boathouse (coloured pink on the Map below).

An “Estate” levy is paid by residents and business occupiers towards maintenance of this area, Known as “The Southside”. The Trust annually reports and publishes an abstract of these accounts to tenants and hosts an annual budget review meeting each autumn

Plans for the future

There is still much work to be done by the Trust. Grant aid nationally appears to be reducing, hence limiting potential grant aid for projects that we wish to undertake. Therefore patience, saving and fund raising is needed in equal measure.

Reserve Policy

Given the relative stability and wide spread of income the trustees feel that a minimum of 3 months running costs would be sufficient to be kept in reserve. We have achieved this and will continue with this policy. Reserves during the year have increased to 4 months and will be subject to annual and seasonal review and will be increased further as appropriate to reflect changes in turnover and liabilities.

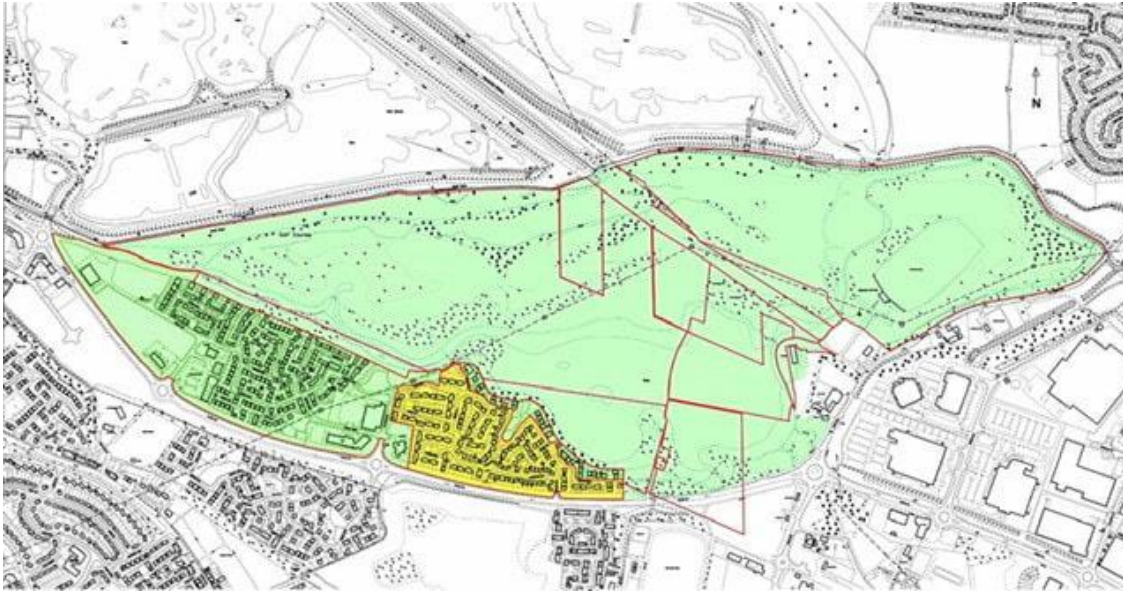
Financial review of the year

During the year the trustees feel the organisation has performed well.

Risk management

The trustees have assessed the major risks to which the charity is exposed and are satisfied that adequate and appropriate systems are in place to mitigate the exposure to both financial and other risks.

Freehold Map for Identification only.



Green– Trust land Freehold.
 Yellow - Avon Ground Rents

Residential Leasehold Plans.



Note the Harron and Strata plots is now in trust ownership.

Manvers Lake and Dearne Valley Trust Limited
The Directors (trustees) present their annual report
for the year ended 31st January 2024

Statement of Directors and Trustees' responsibilities

The trustees (who are also the directors of the Company for the purposes of company law) are responsible for preparing the Trustees' Annual Report and the financial statements in accordance with applicable law and United Kingdom Accounting Standards (United Kingdom Generally Accepted Accounting Practice).

Company law requires the trustees to prepare financial statements for each financial year which give a true and fair view of the state of affairs of the charitable company and the group and of the incoming resources and application of resources, including the income and expenditure of the charitable company and the group for that period. In preparing these financial statements, the trustees are required to:

- select suitable accounting policies and then apply them consistently;
- observe the methods and principles in the charities SORP;
- make judgements and estimates that are reasonable and prudent;
- state whether applicable UK Accounting Standards have been followed, subject to any material departures disclosed and explained in the financial statements;
- prepare the financial statements on the going concern basis unless it is inappropriate to presume that the charitable company will continue in business.

The trustees are responsible for keeping proper accounting records which disclose with reasonable accuracy at any time the financial position of the charitable company and of the group and enable them to ensure that the financial statements comply with the Companies Act 2006. They are also responsible for safeguarding the assets of the charitable company and the group and hence for taking reasonable steps for the prevention and detection of fraud and other irregularities.

The trustees declare that they have approved the above report. Signed on behalf of the trustees

Signed: 

Date: 22nd July 2024

Name and position: Chris Hawkesworth, Director

Signed: 

Date: 22nd July 2024

Name and position: Mark Benton, Director

**Independent examiners report to the trustees of
Manvers Lake and Dearne Valley Trust Limited
for the year ended 31st January 2024**

I report on the financial statements of the Manvers Lake and Dearne Valley Trust Limited for the period ended 31st January 2024 which are set out on pages 8 to 13.

Respective responsibilities of trustees and examiner

The charity's trustees (who are also the directors of the Company for the purposes of company law) are responsible for the preparation of the accounts. The charity's trustees consider that an audit is not required for this year under section 144(2) of the Charities Act 2011 (the 2011 Act) and that an independent examination is needed.

Having satisfied myself that the charity is not subject to audit under company law and is eligible for independent examination, it is my responsibility to:

- examine the accounts under section 145 of the 2011 Act;
- follow the procedures laid down in the general Directions given by the Charity Commission under section 145(5)(b) of the 2011 Act; and
- state whether particular matters have come to my attention.

Basis of independent examiner's report

My examination was carried out in accordance with the general Directions given by the Charity Commission. An examination includes a review of the accounting records kept by the charity and a comparison of the accounts presented with those records. It also includes consideration of any unusual items or disclosures in the accounts, and seeking explanations from you as trustees concerning any such matters. The procedures undertaken do not provide all the evidence that would be required in an audit and consequently no opinion is given as to whether the accounts present a "true and fair view" and the report is limited to those matters set out in the statement below.

Independent examiner's statement

In connection with my examination, no matter has come to my attention:

1. which gives me reasonable cause to believe that, in any material respect, the requirements:

- to keep accounting records in accordance with section 386 of the Companies Act 2006; and
- to prepare accounts which accord with the accounting records and comply with the accounting requirements of section 396 of the Companies Act 2006 and with the methods and principles of the Statement of Recommended Practice: Accounting and Reporting by Charities:

have not been met; or

2. to which, in my opinion, attention should be drawn in order to enable a proper understanding of the accounts to be reached.



Mr Heera Singh FMAAT
HSL Accountancy Solutions Ltd
Enterprise House
61a Carr House
Doncaster
DN1 2BY

Date: 22nd July 2024

Manvers Lake and Dearne Valley Trust Limited
Statement of Financial Activities (Incorporating the Income and Expenditure Account)
for the year ended 31st January 2024

	Unrestricted Funds	Restricted Funds	Total 2024	Total 2023
	£	£	£	£
Income and endowments from:				
Grants and donations	148,476	24,999	173,475	191,172
Charitable activities	98,910	0	98,910	56,992
Other	9,152	0	9,152	17,749
Total	256,538	24,999	281,537	265,912
Expenditure on:				
Raising funds	3,488	0	3,488	3,488
Charitable activities	182,066	3,295	185,361	156,761
Other				
Total	185,553	3,295	188,848	160,249
Net income/(expenditure)	70,985	21,704	92,689	105,664
Total funds brought forward	579,909	304,504	884,413	778,750
Total funds carried forward	650,894	326,208	977,102	884,413

The Statement of Financial Activities includes all gains and losses in the year and therefore a statement of total recognised gains and losses has not been prepared. All the above amounts relate to continuing activities.

Manvers Lake and Dearne Valley Trust Limited
Balance sheet
As at 31st January 2024

	2024	2023
	£	£
Fixed Assets	846,952	819,969
Current Assets		
Debtors	75,944	70,179
Cash at bank & in hand	124,298	84,830
	<u>200,243</u>	<u>155,009</u>
Current Liabilities		
Creditors - amounts due within one year	<u>-21,105</u>	<u>-21,172</u>
Net current assets	179,138	133,837
Long Term Liabilities		
Creditors - amounts due after one year	-48,987	-69,392
Net assets	<u>977,102</u>	<u>884,413</u>
Funds of the company		
Unrestricted Funds	650,894	579,909
Restricted Funds	326,208	304,504
Total funds	<u>977,102</u>	<u>884,413</u>

For the year ended 31st January 2024, the company is entitled to the audit exemption under section 477 (2) of the Companies Act 2006.

The members have not required the company to obtain an audit in accordance with section 476 of the Companies Act 2006.

The directors acknowledge their responsibilities for:

- a) ensuring the company keeps accounting records which comply with section 386; and
- b) preparing accounts which give a true and fair view of the state of affairs of the company as at the end of the financial year, and its profit or loss for the financial year, in accordance with the requirement of the companies Act 2006 relating to accounts, so far as is applicable to the company.

These accounts have been prepared in accordance with the provisions applicable to companies subject to small companies' regime.

The directors declare that they have approved the accounts above.

Signed on behalf of the company's directors:

Signed: 

Date: 22nd July 2024

Name and position: Chris Hawkesworth, Director

Signed: 

Date: 22nd July 2024

Name and position: Mark Benton, Director

1. Accounting policies

1.1.1. Basis of preparation

These accounts (financial statements) have been prepared under the historic cost convention, with items recognised at cost or transaction value, unless otherwise stated in the relevant note(s), in accordance with:

- The Charities Act 2011
- The Companies Act 2006
- The Financial Reporting Standard applicable in the UK and the Republic of Ireland: FRS102
- Accounting & Reporting by Charities: Statement of Recommended Practice (Charities SORP FRS102) (effective January 2015)

1.1.2. The charity meets the definition of a public benefit entity as defined by FRS 102

1.1.3. The trustees consider that there are no material uncertainties about the charity's ability to continue as a going concern.

1.2. Incoming resources

These are included in the Statement of Financial Activities. Incoming resources are recognised when:

- the company becomes entitled to the resources
- the trustees are virtually certain they will receive the resources; and
- the monetary value can be measured with sufficient reliability

Where incoming resources have related expenditure (as with fund-raising or contract income) the incoming resources and related expenditure are reported gross in the Statement of Financial Activities.

Grants and donations are only included in the Statement of Financial Activities when the company has unconditional entitlement to the resources.

Contractual income is only included in the Statement of Financial Activities once the related goods or performance related services have been delivered. Investment income is included in the accounts when receivable.

1.3. Expenditure

Expenditure is charged to the Statement of Financial Activities on an accruals basis, inclusive of any VAT which cannot be recovered. Expenditure is classified under headings that aggregate all costs related to that category. Where costs cannot be directly attributed to particular headings they have been allocated to activities on a basis consistent with the use of resources.

Charitable expenditure comprises those costs incurred in the delivery of the charity's activities and services for its beneficiaries, including both direct and support costs. The expenditure has been analysed but usage. Professional fees include those costs associated with meeting constitutional and statutory requirements, including Accountancy fees.

1.4. Fund accounting

Restricted funds are funds received from donors which are subject to restrictions on the purposes for which they may be used of which have been raised for a specific project. Unrestricted funds are those where there are no externally imposed restrictions. These include funds freely available to the charity for expenditure or appropriation to reserves for internally designated purposes.

1.5 Assets

Tangible assets are capitalised if they can be used for more than one year, and cost at least £250. They are valued at cost, or, if gifted, at the value to the company on receipt.

The rates applicable are;

Kitchen furniture and equipment	20% Straight line
Furniture	20% Straight line
Land and buildings	1% Reducing balance

1.6. Debtors

Debtors are recognised at the settlement amount due. Prepayments are valued at the amount prepaid.

1.7. Cash

Cash comprises bank deposits repayable on demand and any short-term highly liquid investments with a maturity date of three months or less from the date of acquisition or opening of the deposit or similar account.

Manvers Lake and Dearne Valley Trust Limited
Notes to the financial statements
for the year ended 31st January 2024

1.8. Creditors

Creditors are recognised where the charity has a present obligation resulting from a past event that will probably result in the transfer of funds to a third party and the amount due to settle the obligation can be measured or estimated reliably. Creditors are normally recognised at their settlement amount, usually the invoice amount. Accrued charges are normally valued at their settlement amount.

1.9. Taxes

The company is not VAT registered. As a Charity the company is exempt from taxation on income and gains falling within section 505 of the Taxes Act 1988 or s256 of the Taxation of chargeable gains Act section 505 of the Taxes Act 1988 or s256 of the Taxation of chargeable gains Act 1992 to the extent that these are applied to its charitable objects.

2. Income

	General Fund	Restricted Fund	Total 2024	Total 2023
	£	£	£	£
Income from:				
Affiliation fees	12,000	0	12,000	12,000
Car park income	53,528	0	53,528	43,936
Donations and grants	136,476	24,999	161,475	179,172
Electricity generation	8,477	0	8,477	3,205
Facility hire and events	36,905	0	36,905	9,851
Other income	9,152	0	9,152	17,749
Total	256,538	24,999	281,537	265,912

3. Expenditure on

	General Fund	Restricted Fund	Total 2024	Total 2023
	£	£	£	£
Expenditure on:				
Bank charges	239	0	239	224
Building maintenance and development	21,793	0	21,793	11,590
Building security	1,371	0	1,371	1,360
Building sundries	0	0	0	300
Car parking machine	1,241	0	1,241	1,320
Cost of raising funds	5,228	0	5,228	3,488
Depreciation	8,559	3,295	11,854	12,600
Sundry	0	0	0	479
Equipment, repairs and renewals	4,497	0	4,497	2,705
Insurances	2,313	0	2,313	11,001
Office costs	994	0	994	1,273
Professional fees	34,723	0	34,723	14,412
Rates	0	0	0	1,934
Telephone and internet	2,210	0	2,210	1,850
Utilities	21,938	0	21,938	15,201
Volunteers hours	80,000	0	80,000	80,000
Volunteer expenses	449	0	449	514
Total	185,553	3,295	188,848	160,249

Manvers Lake and Dearne Valley Trust Limited
Notes to the financial statements
for the year ended 31st January 2024

4. Tangible fixed assets

	Land & Buildings £	General equipment £	Total £
Cost	859,081	24,726	883,807
Additions	38,836		38,836
Disposals			0
At 31st January 2024	<u>897,917</u>	<u>24,726</u>	<u>922,643</u>
Depreciation			
At 1st February 2023	44,084	19,753	63,838
Charge this period	8,463	3,391	11,854
Disposals			
At 31st January 2024	<u>52,547</u>	<u>23,144</u>	<u>75,691</u>
Net book value at 31st January 2024	<u>845,370</u>	<u>1,582</u>	<u>846,952</u>
Net book value at 31st January 2023	<u>814,996</u>	<u>4,972</u>	<u>819,969</u>

5. Debtors and creditors

	2024 £	2023 £
Debtors		
Prepayments	0	1,040
Trade debtors	75,944	69,140
	<u>75,944</u>	<u>70,179</u>
Creditors - due within one year		
Trade creditors	-700	-767
Loan repayment*	-20,405	-20,405
	<u>-21,105</u>	<u>-21,172</u>
Creditors - due after one year		
Loan repayment*	<u>-48,987</u>	<u>69,392</u>

6. Movement of funds

	Balance at 01/02/2023 £	Incoming Resources £	Expended Resources £	Transfers £	Balance at 31/01/2024 £
Unrestricted funds					
General funds	579,909	256,538	-185,553	0	650,894
Restricted funds					
Veolia Environmental Trust	32,324	0	-323	0	32,000
Coalfields Regeneration Trust	23,066	0	-231	0	22,835
Sport England	221,435	0	-2,215	0	219,220
Key Fund	27,680	0	-277	0	27,403
Key Fund 2023	0	24,999	-250	0	24,749
Total funds	<u>884,413</u>	<u>281,537</u>	<u>-135,588</u>	<u>0</u>	<u>977,102</u>

6. Movement of funds (continued)

Veolia Environmental Trust funding was towards the building foundations.

Coalfields Regeneration Trust, Coalfields Community Enterprise Award funding was towards the construction costs of the new building

Sport England funding was a contribution towards the new building.

Key Fund who were working on behalf of "Power to Change" who are funded by The Big Lottery Fund– this was a grant towards completion of the building.

Key Fund 2023 – this was a grant towards Phase 5 of the building works.

The above grant expenditure has been capitalised and will be reduced by the charge of depreciation on an annual basis

7. Staff costs

During the financial year there were no employees. Independent contractors were engaged as and when required.

8. Trustees remuneration, benefits and expenses

Trustees received no remuneration or benefits in this period. All amounts reimbursed to trustees were in respect of expenses properly incurred.

9. In-kind contribution and third party relations

Manvers Waterfront Boat Club Limited have supported the establishment of Manvers Lake and Dearne Valley Trust Limited (The Trust), and continue to support its development. During the year the Club donated £51,000 to the Trust.

During the period of these accounts, Manvers Lake and Dearne Valley Trading Limited (Co. number 08239180) did not make any repayments against the loan given to them by the Trust. £73,619 is still owed to the Trust. There is no interest to be calculated on the loan and repayments are flexible. The terms of the loan will be reviewed annually.

9. In-kind contribution and third party relations

During the period of these accounts, the Trustees recognise the support of their Volunteer. The value of their support amounts to £80,000 of donated time.

10. Building development and land ownership

The trust manages the boathouse that is currently owned by the BCU. The Board at the BCU have voted to surrender their 2008 lease to the Trust together with the disposal of the Boat House to the Trust for the nominal value of £100 plus VAT. This transfer is to take place during the next financial year.

In early 2015 TCN (uk) Ltd having developed/built out the site, and sold all the plots, wished to exit the site and in doing so they offered the Trust their residual interests in the form of their 999 year lease. This lease also included some unoccupied parcels of land, some public access land and land around the Boat House.

The expenditure that makes up the Levy is a Management Fee, Insurance, plus various onsite maintenance obligations, Litter collection, Grass cutting, hard surfaces, bridges, security and signage being examples of the main TCN (uk) Ltd outgoings.

Using the Fair Value approach, the Trustees have decided that the land has a value and should be shown as an asset of £15,000.

11. Previous year's comparison

Previous year's figures have been included where available.

MANVERS LAKE AND DEARNE VALLEY TRUST LTD

England & Wales - Charity number 1150159

Accounts



Accountancy Solutions

Manvers Lake and Dearne Valley Trust Limited

Financial statements for the
year ended 31st January 2024

Charity number: 1150159
Registered England and Wales

Company number: 07521620
Company limited by guarantee

Manvers Lake and Dearne Valley Trust Limited
Contents of the financial statements
for the year ended 31st January 2024

	Page
Administrative Details	1
Directors (Trustees Report)	2 – 5
Independent Examiners Report	6
Income and Expenditure Account	7
Balance Sheet	8
Notes to the accounts	9 - 12

Manvers Lake and Dearne Valley Trust Limited
Administrative details
for the year ended 31st January 2024

Registered Charity number	1150159
Registered Company number	07521620
Directors (Trustees)	Christopher Hawkesworth Mark Benton Christopher Wordsworth Debra Adams Alan Atkin Paul Owen Stephen Toller
Company Secretary	Mark Benton
Principle address	The Boat House Station Road Rotherham Station Road S63 7DG
Bankers	HSBC Bank Plc. 35 College St, Rotherham S65 1AF
Independent Examiner	Heera Singh FMAAT HSL Accountancy Solutions Enterprise House 61a Carr House Doncaster DN1 2BY

Manvers Lake and Dearne Valley Trust Limited
The Directors (trustees) present their annual report
for the year ended 31st January 2024

The trustees, are also directors of the charity for the purposes of the Companies Act, submit their annual report and financial statements for the year ended 31st January 2024.

Exemptions

The trustees have taken advantage of the exemptions available to small companies, including the audit exemption (see statement on balance sheet).

Structure, governance and management

The Organisation is operated under the rules of its memorandum and articles of association, adopted on 8th February 2011 and last updated on 12th December 2012.

Organisational structure

The organisations is a company limited by guarantee, and has no share capital. The Directors liability is limited to £1. The organisation also a registered Charity from 13th December 2012. The overall management of the organisation is the responsibility of the trustees who are appointed under the terms of the governing document.

Aims and objectives

To promote community participation in healthy recreation in safe and pleasant surroundings in an environmentally sustainable manner by providing facilities for canoeing, cycling, running, sailing, swimming, angling, triathlon, quadrathlon, stand-up-paddle boarding [SUP], model boating, and windsurfing to the communities of Rotherham, Doncaster, Barnsley and the surrounding areas.

Public Benefit Statement

The trustees of Manvers Lake and Dearne Valley Trust ["Trust"] confirm that they have complied with their duty under section 17(5) of the Charities Act 2011 to have regard to the Charity Commission's guidance on public benefit and that the public benefit requirement has informed the activities of the Trust in the year to January 31st 2023.

The Manvers Lake and Dearne Valley Trust Ltd [Trust] is the umbrella organisation of all Boathouse, Manvers Lake and most Parkland activities. To this end it has close and common links with 3 other limited liability companies all of which are "Not for profit" companies without a share holding and limited by guarantee. Any surpluses from these companies are donated to the Trust. The Trust has close links to the community through its partnership with The Dearne Valley College (RNN Group) and Rotherham Borough Council both of whom have board voting representation.

Summary of Main Activities

The core activities of the Trust are:

- Maintaining and developing the Boathouse, Manvers Lake and surrounding park land.
- Ensuring that the general public can use the permissive paths and other lands surrounding the lake in a clean, clear and safe manner.
- Delivery of a comprehensive year-round programme of sporting, fitness and general well-being activities.
- Providing an Outreach Programme to schools and other group users of our facilities.
- Offering support and advice to the public on matters related to water sports and other associated sports.
- Offering a venue for education and training for all 3 "Blue light" services, the NHS, Universities, Companies and

Educational establishments.

Our philosophy is to offer access to all regardless of personal circumstances, race, gender, ability, or faith. The Trust operates mainly in Rotherham, Doncaster, and Barnsley. However, visitors do come from further afield. The weekly Club programme is open to all members and some of the weekly program is open to non-members.

The Lake and the Boathouse provide a focus for our activities and it is estimated that the lake attracted over 400,000 visitors last year with most taking part in some form of active recreation. Manvers Waterfront Boat Club members now number nearly 2400. These and other Boathouse users account for over 55,000 of visits. Members use the facilities for canoeing, kayaking, SUP [stand-up-paddle-boarding], dragon boating, cycling, running, sailing, open water swimming, triathlon, quadrathlon, angling, model boating, walking and windsurfing, plus, associated social, training and educational sessions. Fees are charged for club membership, but these are kept at a low level.

The Trust wishes to be an example of best practice and to this end it is affiliated via the linked Manvers Waterfront Boat Club [Club] and is signed up to the policies of: Sport England, British Canoeing, British Triathlon, British Swimming, Royal Yachting Association, The Angling Trust, British Athletics, British Quadrathlon Association, British Dragon Boating Association [BDA], AALA and RoSPA.

Summary of Main Activities (Continued)

The Trust and Club are supported by and have close links with Sport England, South Yorkshire County Sports Partnership, the Environment Agency, The Canal and River Trust, Rotherham, Barnsley and Doncaster Councils, MPs and Councillors, The South Yorkshire Police, Ambulance and Fire & Rescue Services and regional NHS.

The Trust and Club provide training courses for members and volunteers in, for example: coaching, disability awareness, Child Protection, and Health and Safety issues. Key personnel are DBS checked.

Key achievements for 2023- 24

Freehold Sale.

The Trust has completed the sale of the golf club freehold.

Environment Agency land leased.

The Trust has agreed to continue with the lease from the Environment Agency for approximately 2 km of fishing and boating rights on a stretch of the River Dearne at Darfield and the River Don at Kilnhurst. The water, approximately 2 km at each site includes access to and along the riverbanks.

British Canoeing lease surrender.

At the request of the Trust the board of British Canoeing agreed to surrender the lease then transfer and merge the British Canoe Union 2008 Lease of the lake and original boat house into the ownership of the Trust. Legal details are on-going for all matters to be completed during 2024.

Hooper Homes Land Exchange.

The Trust and Hooper homes that are developing the old garden centre agreed to transfer a couple of parcels of land. This will be completed when the development of the homes are finished when a triangle of land (green space) will be handed over to the Trust.

Manvers White Water Recreational and Rescue Channel

The Trust has developed plans in partnership with South Yorkshire Fire and Rescue Service to build the above around the south bay of the lake. The project is actively being supported by a number of key players and good progress is being made.

Boat Store Annex Phase 5 and 6

Planning permission was granted for the development for additional space in accordance with the planning permission on the ground floor and a change of use of the first floor to form a meeting room/social space. Phase 5 and 5a (underfloor heating) have been completed and we look forward to planning and delivering Phase 6.

Land and buildings ownership and management

The Freehold of various plots of land to the North of Manvers Way, the South side of the Lake between the RSPB in the West to Station Road in the East, were transferred to the Trust in 2015. The Trust maintains the land and manages the collection of an "Estate" service charge and Freehold levy from applicable leasees. The money raised is a ring-fenced contribution to the on-going maintenance of specific geographical areas and facilities open to the public. Footfall remains high but as a consequence a significant amount of additional resource has had to be put into not only dealing with practical site issues such as grass cutting, litter removal, dog faeces, reed removal, bridge repairs, and anti-social behaviour. We have also managed a number of ongoing leaseholder and residents queries.

Estate services delivery.

Delivery of "Estate" services is mainly achieved by working in partnership with volunteers from the club, other organisations such as local litter picking groups and Manvers Lake and Dearne Valley Trading Ltd. "Trading" the operational delivery arm of the Trust. We all work together to ensure the lake and surrounding parkland is well maintained, safe and kept clean and tidy. We strive to deliver good value for money for managing this space for the local community and lake visitors.

One on-going big issue is site inconsistencies. It should not be forgotten that this whole site was remediated and regenerated out of the Manvers Main Colliery and Wath coking works. Though now decontaminated and fully built up there is a historical legacy of leases and freeholds. Working with all appropriate partners the Trust is attempting, on a once and for all basis, to identify anomalies to clean up, merge and rectify the land ownership. This effort has proved to be more complex, lengthy and costly than anticipated and though much has been achieved it will be ongoing for at least the coming year.

Manvers Lake and Dearne Valley Trust Limited
The Directors (trustees) present their annual report
for the year ended 31st January 2024

Visitors to Manvers Lake

The number of visitors to Manvers Lake and the reason for their visits are recorded daily. Using these statistics, it is possible to estimate that the lake has attracted approximately 500,000 visitors during the year.

We record the number of people that use the building, this includes club member visits (40K), café users (50k), people that hire rooms etc (10k).

All that the Trust and its linked companies have achieved last year would not have been possible without the support of employees, the club members, volunteers, donors, affiliates, local residents, committee, directors and trustees.

Environment Agency and blue light services

These continue to use the lake for testing equipment and training using the lake environment. Also Manvers saw an increase in water rescue training in partnership of ISAR Training using the lake and rooms.

AALA

The Trust provides Outdoor Adventurous Activities to young persons and holds the requisite AALA license so that it can arrange activities for under 18s who are not members of the Club.

Websites

The Trust and the Club operates three websites. These continue to develop and offer both club members and the general public information.

Café

The café provides continues light snacks and drinks to Boathouse and lake users.

Dearne Valley College – RNN Group

The strategic partnership with the College continues to grow and develop. The Trust sees this partnership and its future as extremely beneficial to both parties. The rural environment of the lake compliments the urban environment of the College. Hence the College can offer additional education and sporting opportunities to their students and the Trust and the Club can offer a pathway into participation coaching and management of several sports.

Land Ownership

The Trust now has the Freehold ownership of Manvers Lake, the southside of the lake and land around the Boathouse (coloured pink on the Map below).

An “Estate” levy is paid by residents and business occupiers towards maintenance of this area, Known as “The Southside”. The Trust annually reports and publishes an abstract of these accounts to tenants and hosts an annual budget review meeting each autumn

Plans for the future

There is still much work to be done by the Trust. Grant aid nationally appears to be reducing, hence limiting potential grant aid for projects that we wish to undertake. Therefore patience, saving and fund raising is needed in equal measure.

Reserve Policy

Given the relative stability and wide spread of income the trustees feel that a minimum of 3 months running costs would be sufficient to be kept in reserve. We have achieved this and will continue with this policy. Reserves during the year have increased to 4 months and will be subject to annual and seasonal review and will be increased further as appropriate to reflect changes in turnover and liabilities.

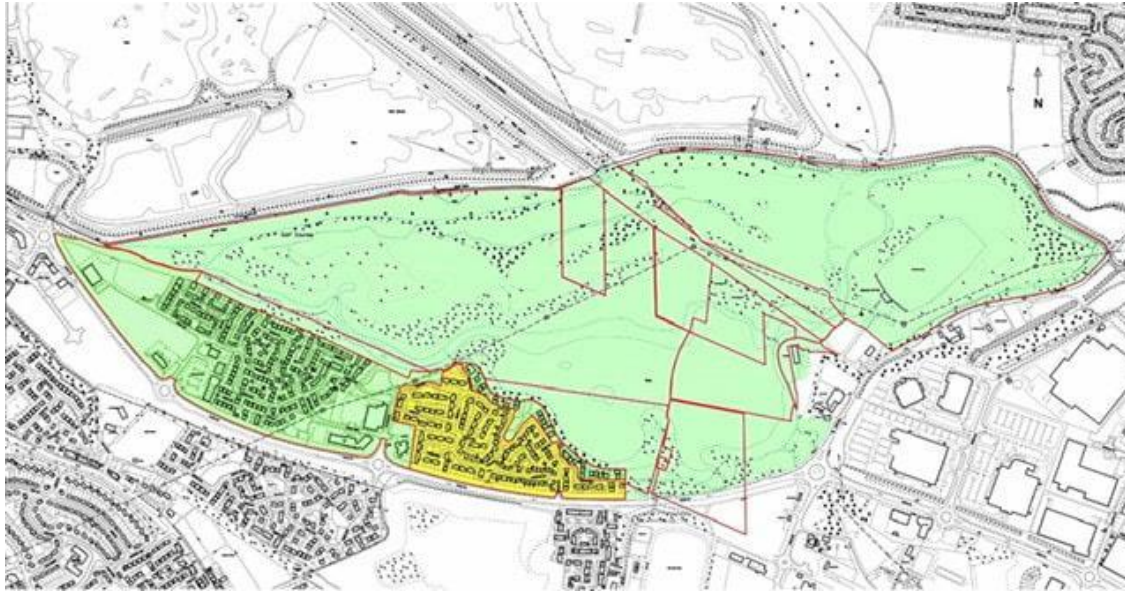
Financial review of the year

During the year the trustees feel the organisation has performed well.

Risk management

The trustees have assessed the major risks to which the charity is exposed and are satisfied that adequate and appropriate systems are in place to mitigate the exposure to both financial and other risks.

Freehold Map for Identification only.



Green– Trust land Freehold.
 Yellow - Avon Ground Rents

Residential Leasehold Plans.



Note the Harron and Strata plots is now in trust ownership.

Manvers Lake and Dearne Valley Trust Limited
The Directors (trustees) present their annual report
for the year ended 31st January 2024

Statement of Directors and Trustees' responsibilities

The trustees (who are also the directors of the Company for the purposes of company law) are responsible for preparing the Trustees' Annual Report and the financial statements in accordance with applicable law and United Kingdom Accounting Standards (United Kingdom Generally Accepted Accounting Practice).

Company law requires the trustees to prepare financial statements for each financial year which give a true and fair view of the state of affairs of the charitable company and the group and of the incoming resources and application of resources, including the income and expenditure of the charitable company and the group for that period. In preparing these financial statements, the trustees are required to:

- select suitable accounting policies and then apply them consistently;
- observe the methods and principles in the charities SORP;
- make judgements and estimates that are reasonable and prudent;
- state whether applicable UK Accounting Standards have been followed, subject to any material departures disclosed and explained in the financial statements;
- prepare the financial statements on the going concern basis unless it is inappropriate to presume that the charitable company will continue in business.

The trustees are responsible for keeping proper accounting records which disclose with reasonable accuracy at any time the financial position of the charitable company and of the group and enable them to ensure that the financial statements comply with the Companies Act 2006. They are also responsible for safeguarding the assets of the charitable company and the group and hence for taking reasonable steps for the prevention and detection of fraud and other irregularities.

The trustees declare that they have approved the above report. Signed on behalf of the trustees

Signed: 

Date: 22nd July 2024

Name and position: Chris Hawkesworth, Director

Signed: 

Date: 22nd July 2024

Name and position: Mark Benton, Director

**Independent examiners report to the trustees of
Manvers Lake and Dearne Valley Trust Limited
for the year ended 31st January 2024**

I report on the financial statements of the Manvers Lake and Dearne Valley Trust Limited for the period ended 31st January 2024 which are set out on pages 8 to 13.

Respective responsibilities of trustees and examiner

The charity's trustees (who are also the directors of the Company for the purposes of company law) are responsible for the preparation of the accounts. The charity's trustees consider that an audit is not required for this year under section 144(2) of the Charities Act 2011 (the 2011 Act) and that an independent examination is needed.

Having satisfied myself that the charity is not subject to audit under company law and is eligible for independent examination, it is my responsibility to:

- examine the accounts under section 145 of the 2011 Act;
- follow the procedures laid down in the general Directions given by the Charity Commission under section 145(5)(b) of the 2011 Act; and
- state whether particular matters have come to my attention.

Basis of independent examiner's report

My examination was carried out in accordance with the general Directions given by the Charity Commission. An examination includes a review of the accounting records kept by the charity and a comparison of the accounts presented with those records. It also includes consideration of any unusual items or disclosures in the accounts, and seeking explanations from you as trustees concerning any such matters. The procedures undertaken do not provide all the evidence that would be required in an audit and consequently no opinion is given as to whether the accounts present a "true and fair view" and the report is limited to those matters set out in the statement below.

Independent examiner's statement

In connection with my examination, no matter has come to my attention:

1. which gives me reasonable cause to believe that, in any material respect, the requirements:

- to keep accounting records in accordance with section 386 of the Companies Act 2006; and
- to prepare accounts which accord with the accounting records and comply with the accounting requirements of section 396 of the Companies Act 2006 and with the methods and principles of the Statement of Recommended Practice: Accounting and Reporting by Charities:

have not been met; or

2. to which, in my opinion, attention should be drawn in order to enable a proper understanding of the accounts to be reached.



Mr Heera Singh FMAAT
HSL Accountancy Solutions Ltd
Enterprise House
61a Carr House
Doncaster
DN1 2BY

Date: 22nd July 2024

Manvers Lake and Dearne Valley Trust Limited
Statement of Financial Activities (Incorporating the Income and Expenditure Account)
for the year ended 31st January 2024

	Unrestricted Funds	Restricted Funds	Total 2024	Total 2023
	£	£	£	£
Income and endowments from:				
Grants and donations	148,476	24,999	173,475	191,172
Charitable activities	98,910	0	98,910	56,992
Other	9,152	0	9,152	17,749
Total	256,538	24,999	281,537	265,912
Expenditure on:				
Raising funds	3,488	0	3,488	3,488
Charitable activities	182,066	3,295	185,361	156,761
Other				
Total	185,553	3,295	188,848	160,249
Net income/(expenditure)	70,985	21,704	92,689	105,664
Total funds brought forward	579,909	304,504	884,413	778,750
Total funds carried forward	650,894	326,208	977,102	884,413

The Statement of Financial Activities includes all gains and losses in the year and therefore a statement of total recognised gains and losses has not been prepared. All the above amounts relate to continuing activities.

Manvers Lake and Dearne Valley Trust Limited
Balance sheet
As at 31st January 2024

	2024	2023
	£	£
Fixed Assets	846,952	819,969
Current Assets		
Debtors	75,944	70,179
Cash at bank & in hand	124,298	84,830
	<u>200,243</u>	<u>155,009</u>
Current Liabilities		
Creditors - amounts due within one year	<u>-21,105</u>	<u>-21,172</u>
Net current assets	179,138	133,837
Long Term Liabilities		
Creditors - amounts due after one year	-48,987	-69,392
Net assets	<u>977,102</u>	<u>884,413</u>
Funds of the company		
Unrestricted Funds	650,894	579,909
Restricted Funds	326,208	304,504
Total funds	<u>977,102</u>	<u>884,413</u>

For the year ended 31st January 2024, the company is entitled to the audit exemption under section 477 (2) of the Companies Act 2006.

The members have not required the company to obtain an audit in accordance with section 476 of the Companies Act 2006.

The directors acknowledge their responsibilities for:

- a) ensuring the company keeps accounting records which comply with section 386; and
- b) preparing accounts which give a true and fair view of the state of affairs of the company as at the end of the financial year, and its profit or loss for the financial year, in accordance with the requirement of the companies Act 2006 relating to accounts, so far as is applicable to the company.

These accounts have been prepared in accordance with the provisions applicable to companies subject to small companies' regime.

The directors declare that they have approved the accounts above.

Signed on behalf of the company's directors:

Signed: 

Date: 22nd July 2024

Name and position: Chris Hawkesworth, Director

Signed: 

Date: 22nd July 2024

Name and position: Mark Benton, Director

1. Accounting policies

1.1.1. Basis of preparation

These accounts (financial statements) have been prepared under the historic cost convention, with items recognised at cost or transaction value, unless otherwise stated in the relevant note(s), in accordance with:

- The Charities Act 2011
- The Companies Act 2006
- The Financial Reporting Standard applicable in the UK and the Republic of Ireland: FRS102
- Accounting & Reporting by Charities: Statement of Recommended Practice (Charities SORP FRS102) (effective January 2015)

1.1.2. The charity meets the definition of a public benefit entity as defined by FRS 102

1.1.3. The trustees consider that there are no material uncertainties about the charity's ability to continue as a going concern.

1.2. Incoming resources

These are included in the Statement of Financial Activities. Incoming resources are recognised when:

- the company becomes entitled to the resources
- the trustees are virtually certain they will receive the resources; and
- the monetary value can be measured with sufficient reliability

Where incoming resources have related expenditure (as with fund-raising or contract income) the incoming resources and related expenditure are reported gross in the Statement of Financial Activities.

Grants and donations are only included in the Statement of Financial Activities when the company has unconditional entitlement to the resources.

Contractual income is only included in the Statement of Financial Activities once the related goods or performance related services have been delivered. Investment income is included in the accounts when receivable.

1.3. Expenditure

Expenditure is charged to the Statement of Financial Activities on an accruals basis, inclusive of any VAT which cannot be recovered. Expenditure is classified under headings that aggregate all costs related to that category. Where costs cannot be directly attributed to particular headings they have been allocated to activities on a basis consistent with the use of resources.

Charitable expenditure comprises those costs incurred in the delivery of the charity's activities and services for its beneficiaries, including both direct and support costs. The expenditure has been analysed but usage. Professional fees include those costs associated with meeting constitutional and statutory requirements, including Accountancy fees.

1.4. Fund accounting

Restricted funds are funds received from donors which are subject to restrictions on the purposes for which they may be used of which have been raised for a specific project. Unrestricted funds are those where there are no externally imposed restrictions. These include funds freely available to the charity for expenditure or appropriation to reserves for internally designated purposes.

1.5 Assets

Tangible assets are capitalised if they can be used for more than one year, and cost at least £250. They are valued at cost, or, if gifted, at the value to the company on receipt.

The rates applicable are;

Kitchen furniture and equipment	20% Straight line
Furniture	20% Straight line
Land and buildings	1% Reducing balance

1.6. Debtors

Debtors are recognised at the settlement amount due. Prepayments are valued at the amount prepaid.

1.7. Cash

Cash comprises bank deposits repayable on demand and any short-term highly liquid investments with a maturity date of three months or less from the date of acquisition or opening of the deposit or similar account.

1.8. Creditors

Creditors are recognised where the charity has a present obligation resulting from a past event that will probably result in the transfer of funds to a third party and the amount due to settle the obligation can be measured or estimated reliably. Creditors are normally recognised at their settlement amount, usually the invoice amount. Accrued charges are normally valued at their settlement amount.

1.9. Taxes

The company is not VAT registered. As a Charity the company is exempt from taxation on income and gains falling within section 505 of the Taxes Act 1988 or s256 of the Taxation of chargeable gains Act section 505 of the Taxes Act 1988 or s256 of the Taxation of chargeable gains Act 1992 to the extent that these are applied to its charitable objects.

2. Income

	General Fund	Restricted Fund	Total 2024	Total 2023
	£	£	£	£
Income from:				
Affiliation fees	12,000	0	12,000	12,000
Car park income	53,528	0	53,528	43,936
Donations and grants	136,476	24,999	161,475	179,172
Electricity generation	8,477	0	8,477	3,205
Facility hire and events	36,905	0	36,905	9,851
Other income	9,152	0	9,152	17,749
Total	256,538	24,999	281,537	265,912

3. Expenditure on

	General Fund	Restricted Fund	Total 2024	Total 2023
	£	£	£	£
Expenditure on:				
Bank charges	239	0	239	224
Building maintenance and development	21,793	0	21,793	11,590
Building security	1,371	0	1,371	1,360
Building sundries	0	0	0	300
Car parking machine	1,241	0	1,241	1,320
Cost of raising funds	5,228	0	5,228	3,488
Depreciation	8,559	3,295	11,854	12,600
Sundry	0	0	0	479
Equipment, repairs and renewals	4,497	0	4,497	2,705
Insurances	2,313	0	2,313	11,001
Office costs	994	0	994	1,273
Professional fees	34,723	0	34,723	14,412
Rates	0	0	0	1,934
Telephone and internet	2,210	0	2,210	1,850
Utilities	21,938	0	21,938	15,201
Volunteers hours	80,000	0	80,000	80,000
Volunteer expenses	449	0	449	514
Total	185,553	3,295	188,848	160,249

Manvers Lake and Dearne Valley Trust Limited
Notes to the financial statements
for the year ended 31st January 2024

4. Tangible fixed assets

	Land & Buildings £	General equipment £	Total £
Cost	859,081	24,726	883,807
Additions	38,836		38,836
Disposals			0
At 31st January 2024	<u>897,917</u>	<u>24,726</u>	<u>922,643</u>
Depreciation			
At 1st February 2023	44,084	19,753	63,838
Charge this period	8,463	3,391	11,854
Disposals			
At 31st January 2024	<u>52,547</u>	<u>23,144</u>	<u>75,691</u>
Net book value at 31st January 2024	<u>845,370</u>	<u>1,582</u>	<u>846,952</u>
Net book value at 31st January 2023	<u>814,996</u>	<u>4,972</u>	<u>819,969</u>

5. Debtors and creditors

	2024 £	2023 £
Debtors		
Prepayments	0	1,040
Trade debtors	75,944	69,140
	<u>75,944</u>	<u>70,179</u>
Creditors - due within one year		
Trade creditors	-700	-767
Loan repayment*	-20,405	-20,405
	<u>-21,105</u>	<u>-21,172</u>
Creditors - due after one year		
Loan repayment*	<u>-48,987</u>	<u>69,392</u>

6. Movement of funds

	Balance at 01/02/2023 £	Incoming Resources £	Expended Resources £	Transfers £	Balance at 31/01/2024 £
Unrestricted funds					
General funds	579,909	256,538	-185,553	0	650,894
Restricted funds					
Veolia Environmental Trust	32,324	0	-323	0	32,000
Coalfields Regeneration Trust	23,066	0	-231	0	22,835
Sport England	221,435	0	-2,215	0	219,220
Key Fund	27,680	0	-277	0	27,403
Key Fund 2023	0	24,999	-250	0	24,749
Total funds	<u>884,413</u>	<u>281,537</u>	<u>-135,588</u>	<u>0</u>	<u>977,102</u>

6. Movement of funds (continued)

Veolia Environmental Trust funding was towards the building foundations.

Coalfields Regeneration Trust, Coalfields Community Enterprise Award funding was towards the construction costs of the new building

Sport England funding was a contribution towards the new building.

Key Fund who were working on behalf of "Power to Change" who are funded by The Big Lottery Fund– this was a grant towards completion of the building.

Key Fund 2023 – this was a grant towards Phase 5 of the building works.

The above grant expenditure has been capitalised and will be reduced by the charge of depreciation on an annual basis

7. Staff costs

During the financial year there were no employees. Independent contractors were engaged as and when required.

8. Trustees remuneration, benefits and expenses

Trustees received no remuneration or benefits in this period. All amounts reimbursed to trustees were in respect of expenses properly incurred.

9. In-kind contribution and third party relations

Manvers Waterfront Boat Club Limited have supported the establishment of Manvers Lake and Dearne Valley Trust Limited (The Trust), and continue to support its development. During the year the Club donated £51,000 to the Trust.

During the period of these accounts, Manvers Lake and Dearne Valley Trading Limited (Co. number 08239180) did not make any repayments against the loan given to them by the Trust. £73,619 is still owed to the Trust. There is no interest to be calculated on the loan and repayments are flexible. The terms of the loan will be reviewed annually.

9. In-kind contribution and third party relations

During the period of these accounts, the Trustees recognise the support of their Volunteer. The value of their support amounts to £80,000 of donated time.

10. Building development and land ownership

The trust manages the boathouse that is currently owned by the BCU. The Board at the BCU have voted to surrender their 2008 lease to the Trust together with the disposal of the Boat House to the Trust for the nominal value of £100 plus VAT. This transfer is to take place during the next financial year.

In early 2015 TCN (uk) Ltd having developed/built out the site, and sold all the plots, wished to exit the site and in doing so they offered the Trust their residual interests in the form of their 999 year lease. This lease also included some unoccupied parcels of land, some public access land and land around the Boat House.

The expenditure that makes up the Levy is a Management Fee, Insurance, plus various onsite maintenance obligations, Litter collection, Grass cutting, hard surfaces, bridges, security and signage being examples of the main TCN (uk) Ltd outgoings.

Using the Fair Value approach, the Trustees have decided that the land has a value and should be shown as an asset of £15,000.

11. Previous year's comparison

Previous year's figures have been included where available.

MANVERS LAKE AND DEARNE VALLEY TRUST LTD

England & Wales - Charity number 1150159

Accounts



Accountancy Solutions

Manvers Lake and Dearne Valley Trust Limited

Financial statements for the
year ended 31st January 2023

Charity number: 1150159
Registered England and Wales

Company number: 07521620
Company limited by guarantee

Manvers Lake and Dearne Valley Trust Limited
Contents of the financial statements
for the year ended 31st January 2023

	Page
Administrative Details	1
Directors (Trustees Report)	2 – 5
Independent Examiners Report	6
Income and Expenditure Account	7
Balance Sheet	8
Notes to the accounts	9 - 12

Manvers Lake and Dearne Valley Trust Limited
Administrative details
for the year ended 31st January 2023

Registered Charity number	1150159
Registered Company number	07521620
Directors (Trustees)	Christopher Hawkesworth Mark Benton Mr Christopher Wordsworth Mrs Maria Rodgers - Retired
Company Secretary	Mark Benton
Principle address	The Boat House Station Road Rotherham Station Road S63 7DG
Bankers	HSBC Bank Plc. 35 College St, Rotherham S65 1AF
Independent Examiner	Heera Singh FMAAT HSL Accountancy Solutions Enterprise House 61a Carr House Doncaster DN1 2BY

Manvers Lake and Dearne Valley Trust Limited
The Directors (trustees) present their annual report
for the year ended 31st January 2023

The trustees, are also directors of the charity for the purposes of the Companies Act, submit their annual report and financial statements for the year ended 31st January 2023.

Exemptions

The trustees have taken advantage of the exemptions available to small companies, including the audit exemption (see statement on balance sheet).

Structure, governance and management

The Organisation is operated under the rules of its memorandum and articles of association, adopted on 8th February 2011 and last updated on 12th December 2012.

Organisational structure

The organisations is a company limited by guarantee, and has no share capital. The Directors liability is limited to £1. The organisation also a registered Charity from 13th December 2012. The overall management of the organisation is the responsibility of the trustees who are appointed under the terms of the governing document.

Aims and objectives

To promote community participation in healthy recreation in safe and pleasant surroundings in an environmentally sustainable manner by providing facilities for canoeing, cycling, running, sailing, swimming, angling, triathlon, quadrathlon, stand-up-paddle boarding [SUP], model boating, and windsurfing to the communities of Rotherham, Doncaster, Barnsley and the surrounding areas.

Public Benefit Statement

The trustees of Manvers Lake and Dearne Valley Trust ["Trust"] confirm that they have complied with their duty under section 17(5) of the Charities Act 2011 to have regard to the Charity Commission's guidance on public benefit and that the public benefit requirement has informed the activities of the Trust in the year to January 31st 2023.

The Manvers Lake and Dearne Valley Trust Ltd [Trust] is the umbrella organisation of all Boathouse, Manvers Lake and most Parkland activities. To this end it has close and common links with 3 other limited liability companies all of which are "Not for profit" companies without a share holding and limited by guarantee. Any surpluses from these companies are donated to the Trust. The Trust has close links to the community through its partnership with The Dearne Valley College (RNN Group) and Rotherham Borough Council both of whom have board voting representation.

Summary of Main Activities

The core activities of the Trust are:

- Maintaining and developing the Boathouse, Manvers Lake and surrounding park land.
- Ensuring that the general public can use the permissive paths and other lands surrounding the lake in a clean clear and safe manner.
- Delivery of a comprehensive year-round programme of sporting, fitness and general well-being activities
- Providing an Outreach Programme to schools and other group users of our facilities
- Offering support and advice to the public on matters related to water sports and other associated sports.
- Offering a venue for education and training for all 3 "Blue light" services, the NHS, Universities, Companies and Educational establishments.

Our philosophy is to offer access to all regardless of personal circumstances, race, gender, ability, or faith. The Trust operates mainly in Rotherham, Doncaster, and Barnsley. However, visitors do come from further afield. The weekly Club programme is open to all members and some of the weekly program is open to all others, this includes non-members and disabled athletes who regularly take part in our programmes.

The Lake and the Boathouse provides a focus for our activities and it is estimated that the lake attracted over 400,000 visitors this year, most taking part in some form of active recreation. Manvers Waterfront Boat Club members now number nearly 2400. These and other boathouse users account for over 55,000 of visits. Members use the facilities for Canoeing, Kayaking, SUP [Stand-up-paddle-boarding], Dragon Boating, Cycling, Running, Sailing, Open Water Swimming, Triathlon, Quadrathlon, Angling, Model Boating, Walking and Windsurfing, plus, associated social, training and educational sessions. Fees are charged for club membership, but these are kept at a low level.

The Trust wishes to be an example of best practice and to this end it is affiliated via the Linked Manvers Waterfront Boat Club [Club] and is signed up to the policies of: Sport England, British Canoeing, British Triathlon, British Swimming, Royal Yachting Association, The Angling Trust, British Athletics, British Quadrathlon Association, British Dragon Boating Association [BDA], AALA and RoSPA.

Summary of Main Activities (Continued)

The Trust and Club are supported by and have close links with Sport England, South Yorkshire County Sports Partnership, the Environment Agency, The Canal and River Trust, Rotherham, Barnsley and Doncaster Councils, MPs and Councillors, The South Yorkshire Police, Ambulance and Fire & Rescue Services and regional NHS.

The Trust and Club provide training courses for members and volunteers in for example: Coaching, Disability Awareness, Child Protection, and Health and Safety issues. Key personnel are DBS checked. Club members have continued to use the facilities and the café has remained open as a “Takeaway” within government guidelines.

Key achievements for 2022- 23

Most activities have returned after the pandemic.

The good weather in the summer of 2022 resulted in the area around the lake being busy, which brought additional litter collection, “Anti-Social Behaviour” and other management issues. The activities at the club and have continued throughout this year. The café offer is that of a takeaway using the lake view room for the extra space and the toilets have remained open.

Freehold Sale.

The Trust works towards completing the sale of the golf club freehold.

Environment Agency land leased.

The Trust has agree to continue with the with the lease from Environment Agency for approximately 2 km of Fishing and boating rights on a stretch of the River Dearne at Darfield and the River Don at Kilnhurst. The water, approximately 2 km at each site includes access to and along the river banks.

British Canoeing lease surrender.

At the request of the Trust the board of British Canoeing agreed to surrender the lease then transfer and merge the British Canoe Union 2008 Lease of the lake and original boat house into the ownership of the Trust. Legal details are on-going for all matters to be completed during 2023.

Hooper Homes Land Exchange.

The Trust and Hooper homes that are developing the old garden centre agreed to transfer a couple of parcels of land. This was completed within the year when the development of eth homes are complete a triangle of land (green space) will be handed over to the trust.

Boat Store Annex Phase 5 and 6

Planning permission was granted for the development for additional space in accordance with the planning permission on the ground floor and a change of use of the first floor to form a meeting room/social space. Phase 5 has been completed and we look forward to planning and delivering phase 6.

Land and buildings ownership and management

The Freehold of various plots of land to the North of Manvers Way, the South side of the Lake between the RSPB in the West to Station Road in the East, were transferred to the Trust in 2015. The Trust maintains the land and manages the collection of an “Estate” service charge and Freehold levy from applicable lessees. The money raised is a ring-fenced contribution to the on-going maintenance of specific geographical areas and facilities open to the public. After the pandemic local footfall onto the “Estate” remains higher that it was and as a consequence a significant amount of additional resource has had to be put into not only dealing with practical site issues such as grass cutting, litter removal, dog faeces, reed removal, bridge repairs, and anti-social behaviour but, also into handling ongoing leaseholder and residents queries.

Estate services delivery.

Delivery of “Estate” services is mainly achieved by working in partnership with volunteers from the club, other organisations such as local litter picking groups and the Manvers Lake and Dearne Valley Trading Ltd. “Trading” the operational delivery arm of the Trust. We all work together to ensure the lake and surrounding parkland is well maintained, safe and kept clean and tidy. We strive to deliver good value for money for managing this space for the local community and lake visitors.

One on-going big issue is site inconsistencies. It should not be forgotten that this whole site was remediated and regenerated out of the Manvers Main Colliery and Wath coking works. Though now decontaminated and fully built up there is a jigsaw historical legacy of Leases and freeholds. Working with all appropriate partners the Trust is attempting on a once and for all basis to identify anomalies, thence to clean up, merge and rectify. This effort has proved to be more complex, lengthy and costly than anticipated and though much has been achieved it will be ongoing for at least the coming year.

Visitors to Manvers Lake

The number of visitors to Manvers Lake and the reason for their visits are recorded daily. Using these statistics, it is possible to estimate that the lake has attracted approximately 450,000 visitors during the year.

We record the number of people that use the building, this includes club member visits (40K), café users (50k), people that hire rooms etc (10k). This was just over 50,000 in the year.

All that the trust and its linked companies have achieved last year would not have been possible without the support of employees, the club members, volunteers, donors, affiliates, local residents, committee, directors and trustees.

Environment Agency and blue light services

These continue to use the lake for testing equipment and training using the lake environment. Also Manvers saw an increase in water rescue training in partnership of ISAR Training using the lake and rooms.

AALA

The Trust provides Outdoor Adventurous Activities to young persons and holds the requisite AALA license so that it can arrange activities for under 18s who are not members of the club.

Websites

The Trust and the Club operates three websites. These continue to develop and offer both club members and the general public information.

Café

The café provides light snacks and drinks to Boathouse and lake users. Because of Covid-19 regulations the inside facilities have been out of use for 11 months with a take away service operating when Covid-19 guidelines allowed.

Dearne Valley College – RNN

The strategic partnership with the College continues to grow and develop. The Trust sees this partnership and its future as extremely beneficial to both parties. The rural environment of the lake compliments the urban environment of the college. Hence the college can offer additional education and sporting opportunities to their students and the Trust and the Club can offer a pathway into participation coaching and management of several sports.

Reserve Policy

Given the relative stability and wide spread of income the trustees feel that a minimum of 3 months running costs would be sufficient to be kept in reserve. We have achieved this and will continue with this policy. Reserves during the year have increased to 4 months and will be subject to annual and seasonal review and will be increased further as appropriate to reflect changes in turnover and liabilities.

Financial review of the year

During the year the trustees feel the organisation has performed well coming out of the pandemic.

Risk management

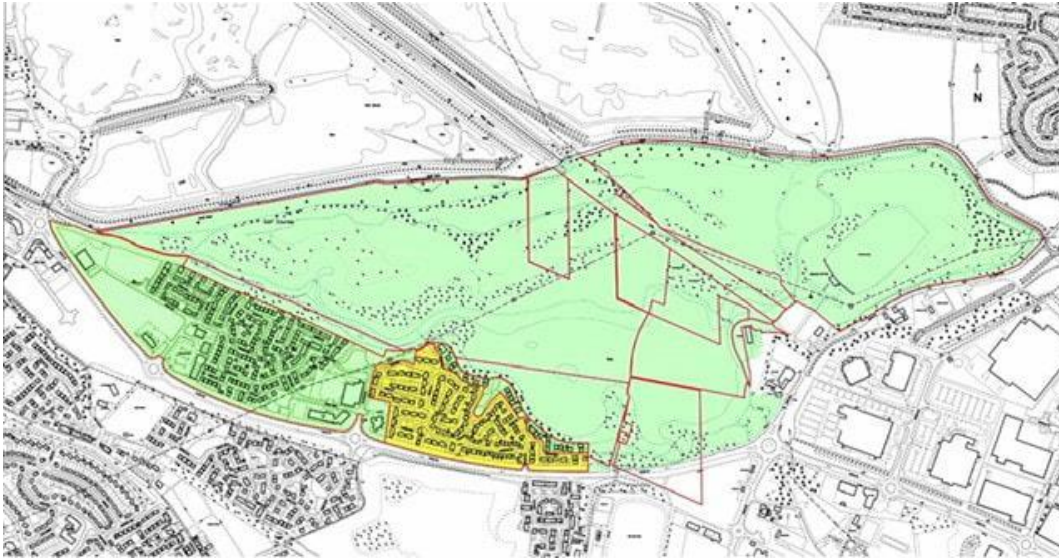
The trustees have assessed the major risks to which the charity is exposed and are satisfied that adequate and appropriate systems are in place to mitigate the exposure to both financial and other risks.

Land Ownership

The Trust, now has the Freehold ownership of Manvers lake, the southside of the lake and land around the boathouse. Coloured Green on the Map below.

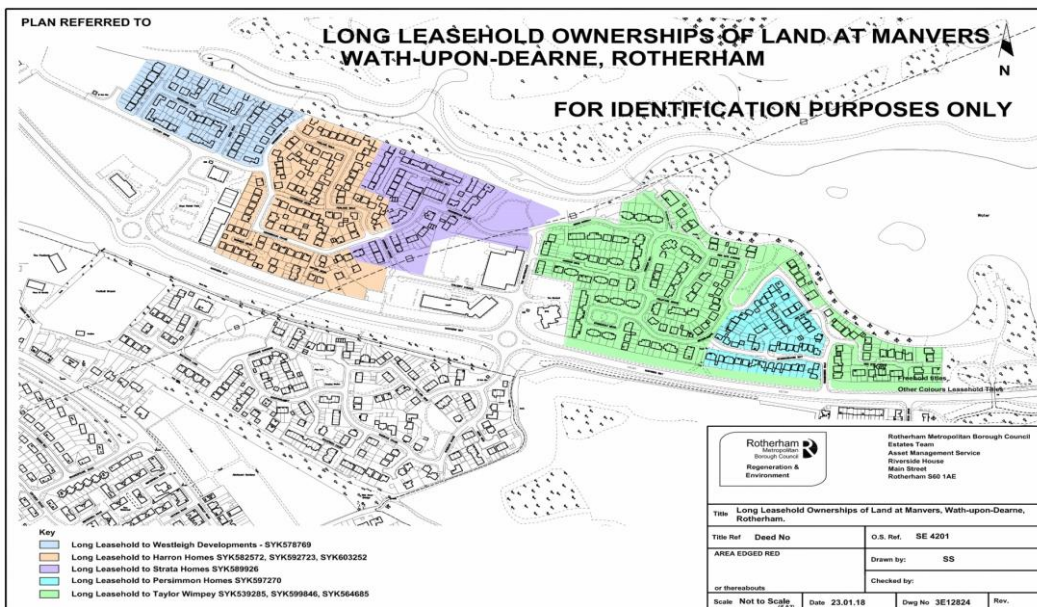
A “Estate” levy is paid by residents and business occupiers towards maintenance of this area. Known as “The Southside”. The Trust annually reports and publishes an abstract of these accounts to tenants and hosts an annual budget review meeting each autumn.

Freehold Map for Identification only.



Green– Trust land Freehold.
Yellow - Avon Ground Rents

Residential Leasehold Plans.



Note the Harron and Strata plots is now in trust ownership.

Plans for the future

There is still much work to be done by the Trust. Grant aid nationally appears to be reducing, hence limiting potential grant aid for projects that we wish to undertake. Therefore patience, saving and fund raising is needed in equal measure.

Manvers Lake and Dearne Valley Trust Limited
The Directors (trustees) present their annual report
for the year ended 31st January 2023

Statement of Directors and Trustees' responsibilities


The trustees (who are also the directors of the Company for the purposes of company law) are responsible for preparing the Trustees' Annual Report and the financial statements in accordance with applicable law and United Kingdom Accounting Standards (United Kingdom Generally Accepted Accounting Practice).

Company law requires the trustees to prepare financial statements for each financial year which give a true and fair view of the state of affairs of the charitable company and the group and of the incoming resources and application of resources, including the income and expenditure of the charitable company and the group for that period. In preparing these financial statements, the trustees are required to:


- select suitable accounting policies and then apply them consistently;
- observe the methods and principles in the charities SORP;
- make judgements and estimates that are reasonable and prudent;
- state whether applicable UK Accounting Standards have been followed, subject to any material departures disclosed and explained in the financial statements;
- prepare the financial statements on the going concern basis unless it is inappropriate to presume that the charitable company will continue in business.

The trustees are responsible for keeping proper accounting records which disclose with reasonable accuracy at any time the financial position of the charitable company and of the group and enable them to ensure that the financial statements comply with the Companies Act 2006. They are also responsible for safeguarding the assets of the charitable company and the group and hence for taking reasonable steps for the prevention and detection of fraud and other irregularities.

The trustees declare that they have approved the above report. Signed on behalf of the trustees

Signed: 
Name and position: Chris Hawkesworth, Director

Date: 27th February 2023

Signed: 
Name and position: Mark Benton, Director

Date: 27th February 2023

**Independent examiners report to the trustees of
Manvers Lake and Dearne Valley Trust Limited
for the year ended 31st January 2023**

I report on the financial statements of the Manvers Lake and Dearne Valley Trust Limited for the period ended 31st January 2023 which are set out on pages 8 to 13.

Respective responsibilities of trustees and examiner

The charity's trustees (who are also the directors of the Company for the purposes of company law) are responsible for the preparation of the accounts. The charity's trustees consider that an audit is not required for this year under section 144(2) of the Charities Act 2011 (the 2011 Act) and that an independent examination is needed.

Having satisfied myself that the charity is not subject to audit under company law and is eligible for independent examination, it is my responsibility to:

- examine the accounts under section 145 of the 2011 Act;
- follow the procedures laid down in the general Directions given by the Charity Commission under section 145(5)(b) of the 2011 Act; and
- state whether particular matters have come to my attention.

Basis of independent examiner's report

My examination was carried out in accordance with the general Directions given by the Charity Commission. An examination includes a review of the accounting records kept by the charity and a comparison of the accounts presented with those records. It also includes consideration of any unusual items or disclosures in the accounts, and seeking explanations from you as trustees concerning any such matters. The procedures undertaken do not provide all the evidence that would be required in an audit and consequently no opinion is given as to whether the accounts present a "true and fair view" and the report is limited to those matters set out in the statement below.

Independent examiner's statement

In connection with my examination, no matter has come to my attention:

1. which gives me reasonable cause to believe that, in any material respect, the requirements:

- to keep accounting records in accordance with section 386 of the Companies Act 2006; and
- to prepare accounts which accord with the accounting records and comply with the accounting requirements of section 396 of the Companies Act 2006 and with the methods and principles of the Statement of Recommended Practice: Accounting and Reporting by Charities:

have not been met; or

2. to which, in my opinion, attention should be drawn in order to enable a proper understanding of the accounts to be reached.



Mr Heera Singh FMAAT
HSL Accountancy Solutions Ltd
Enterprise House
61a Carr House
Doncaster
DN1 2BY

Date: 27th February 2023

Manvers Lake and Dearne Valley Trust Limited
Statement of Financial Activities (Incorporating the Income and Expenditure Account)
for the year ended 31st January 2023

	Unrestricted Funds	Restricted Funds	Total 2023	Total 2022
	£	£	£	£
Income and endowments from:				
Grants and donations	191,172	0	191,172	217,581
Charitable activities	56,992	0	56,992	52,071
Other	17,749	0	17,749	3,355
Total	265,912	0	265,912	273,006
Expenditure on:				
Raising funds	3,488	0	3,488	315
Charitable activities	153,685	3,076	156,761	130,109
Other				
Total	157,173	3,076	160,249	130,424
Net income/(expenditure)	108,740	-3,076	105,664	142,582
Total funds brought forward	471,169	307,580	778,750	636,168
Prior year adjustment	0	0	0	0
Total funds carried forward	579,909	304,504	884,413	778,750

The Statement of Financial Activities includes all gains and losses in the year and therefore a statement of total recognised gains and losses has not been prepared. All the above amounts relate to continuing activities.

Manvers Lake and Dearne Valley Trust Limited
Balance sheet
As at 31st January 2023

	Notes	2023 £	2022 £
Fixed Assets		819,969	543,887
Current Assets			
Debtors		70,179	112,669
Cash at bank & in hand		<u>84,830</u>	<u>122,794</u>
		155,009	235,463
Current Liabilities			
Creditors - amounts due within one year		<u>-21,172</u>	<u>-600</u>
Net current assets		133,837	234,863
Long Term Liabilities			
Creditors - amounts due after one year		-69,392	0
Net assets		<u>884,413</u>	<u>778,750</u>
Funds of the company			
Unrestricted Funds		579,909	471,169
Restricted Funds		<u>304,504</u>	<u>307,580</u>
Total funds		<u>884,413</u>	<u>778,750</u>

For the year ended 31st January 2023, the company is entitled to the audit exemption under section 477 (2) of the Companies Act 2006.

The members have not required the company to obtain an audit in accordance with section 476 of the Companies Act 2006.

The directors acknowledge their responsibilities for:

- ensuring the company keeps accounting records which comply with section 386; and
- preparing accounts which give a true and fair view of the state of affairs of the company as at the end of the financial year, and its profit or loss for the financial year, in accordance with the requirement of the companies Act 2006 relating to accounts, so far as is applicable to the company.

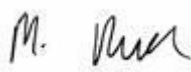
These accounts have been prepared in accordance with the provisions applicable to companies subject to small companies' regime.

The directors declare that they have approved the accounts above.

Signed on behalf of the company's directors:

Signed: 
Name and position: Chris Hawkesworth, Director

Date: 27th February 2023

Signed: 
Name and position: Mark Benton, Director

Date: 27th February 2023

1. Accounting policies

1.1.1. Basis of preparation

These accounts (financial statements) have been prepared under the historic cost convention, with items recognised at cost or transaction value, unless otherwise stated in the relevant note(s), in accordance with:

- The Charities Act 2011
- The Companies Act 2006
- The Financial Reporting Standard applicable in the UK and the Republic of Ireland: FRS102
- Accounting & Reporting by Charities: Statement of Recommended Practice (Charities SORP FRS102) (effective January 2015)

1.1.2. The charity meets the definition of a public benefit entity as defined by FRS 102

1.1.3. The trustees consider that there are no material uncertainties about the charity's ability to continue as a going concern.

1.2. Incoming resources

These are included in the Statement of Financial Activities. Incoming resources are recognised when:

- the company becomes entitled to the resources
- the trustees are virtually certain they will receive the resources; and
- the monetary value can be measured with sufficient reliability

Where incoming resources have related expenditure (as with fund-raising or contract income) the incoming resources and related expenditure are reported gross in the Statement of Financial Activities.

Grants and donations are only included in the Statement of Financial Activities when the company has unconditional entitlement to the resources.

Contractual income is only included in the Statement of Financial Activities once the related goods or performance related services have been delivered. Investment income is included in the accounts when receivable.

1.3. Expenditure

Expenditure is charged to the Statement of Financial Activities on an accruals basis, inclusive of any VAT which cannot be recovered. Expenditure is classified under headings that aggregate all costs related to that category. Where costs cannot be directly attributed to particular headings they have been allocated to activities on a basis consistent with the use of resources.

Charitable expenditure comprises those costs incurred in the delivery of the charity's activities and services for its beneficiaries, including both direct and support costs. The expenditure has been analysed but usage. Professional fees include those costs associated with meeting constitutional and statutory requirements, including Accountancy fees.

1.4. Fund accounting

Restricted funds are funds received from donors which are subject to restrictions on the purposes for which they may be used of which have been raised for a specific project. Unrestricted funds are those where there are no externally imposed restrictions. These include funds freely available to the charity for expenditure or appropriation to reserves for internally designated purposes.

1.5 Assets

Tangible assets are capitalised if they can be used for more than one year, and cost at least £250. They are valued at cost, or, if gifted, at the value to the company on receipt.

The rates applicable are;

Kitchen furniture and equipment	20% Straight line
Furniture	20% Straight line
Land and buildings	1% Reducing balance

1.6. Debtors

Debtors are recognised at the settlement amount due. Prepayments are valued at the amount prepaid.

1.7. Cash

Cash comprises bank deposits repayable on demand and any short-term highly liquid investments with a maturity date of three months or less from the date of acquisition or opening of the deposit or similar account.

Manvers Lake and Dearne Valley Trust Limited
Notes to the financial statements
for the year ended 31st January 2023

1.8. Creditors

Creditors are recognised where the charity has a present obligation resulting from a past event that will probably result in the transfer of funds to a third party and the amount due to settle the obligation can be measured or estimated reliably. Creditors are normally recognised at their settlement amount, usually the invoice amount. Accrued charges are normally valued at their settlement amount.

1.9. Taxes

The company is not VAT registered. As a Charity the company is exempt from taxation on income and gains falling within section 505 of the Taxes Act 1988 or s256 of the Taxation of chargeable gains Act section 505 of the Taxes Act 1988 or s256 of the Taxation of chargeable gains Act 1992 to the extent that these are applied to its charitable objects.

2. Income

	General Fund	Restricted Fund	Total 2023	Total 2022
	£	£	£	£
Income from:				
Affiliation fees	12,000	0	12,000	12,000
Car park income	43,936	0	43,936	38,468
Donations	179,172	0	179,172	205,581
Electricity generation	3,205	0	3,205	3,508
Facility hire and events	9,851	0	9,851	10,095
Other income	17,749	0	17,749	3,355
Total	265,912	0	265,912	273,006

3. Expenditure on

	General Fund	Restricted Fund	Total 2023	Total 2022
	£	£	£	£
Expenditure on:				
Bank charges	224	0	224	0
Building maintenance and development	11,590	0	11,590	16,668
Building security	1,360	0	1,360	130
Building sundries	300	0	300	0
Car parking machine	1,320	0	1,320	1,570
Cost of raising funds	3,488	0	3,488	315
Depreciation	9,523	3,076	12,600	8,856
Sundry	479	0	479	0
Equipment, repairs and renewals	2,705	0	2,705	1,612
Insurances	11,001	0	11,001	3,118
Office costs	1,273	0	1,273	542
Professional fees	14,412	0	14,412	6,377
Rates	1,934	0	1,934	1,416
Telephone and internet	1,850	0	1,850	724
Utilities	15,201	0	15,201	9,041
Volunteers hours	80,000	0	80,000	80,000
Volunteer expenses	514	0	514	57
Total	157,173	3,076	160,249	130,424

Manvers Lake and Dearne Valley Trust Limited
Notes to the financial statements
for the year ended 31st January 2023

4. Tangible fixed assets

	Land & Buildings £	General Equipment £	Total £
Cost			
Additions	575,191	19,934	595,125
Disposals	283,890	4,792	288,682
At 31st January 2023	859,081	24,726	883,807
Depreciation			
At 1st February 2022	35,928	15,310	51,238
Charge this period	8,156	4,443	12,599
Disposals			0
At 31st January 2023	44,084	19,753	63,838
Net book value at 31st January 2023	814,996	4,972	819,969
Net book value at 31st January 2022	539,263	4,623	543,887

5. Debtors and creditors

	2023 £	2022 £
Debtors		
Prepayments	1,040	1,566
Trade debtors	69,140	111,103
	70,179	112,669
Creditors - due within one year		
Trade creditors	-767	-600
Loan repayment*	-20,405	0
	-21,172	-600
Creditors - due after one year		
Loan repayment*	69,392	0

6. Movement of funds

	Balance at 01/02/2022 £	Incoming Resources £	Expended Resources £	Transfers £	Balance at 31/01/2023 £
Unrestricted funds					
General funds	471,169	265,912	-157,173	0	579,909
Restricted funds					
Veolia Environmental Trust	32,650	0	-327	0	32,324
Coalfields Regeneration Trust	23,299	0	-233	0	23,066
Sport England	223,672	0	-2,237	0	221,435
Key Fund	27,960	0	-280	0	27,680
Total funds	778,750	265,912	-160,249	0	884,413

Veolia Environmental Trust funding was towards the building foundations.

Coalfields Regeneration Trust, Coalfields Community Enterprise Award funding was towards the construction costs of the new building

Sport England funding was a contribution towards the new building.

Key Fund who were working on behalf of "Power to Change" who are funded by The Big Lottery Fund– this was a grant towards completion of the building.

The above grant expenditure has been capitalised and will be reduced by the charge of depreciation on an annual basis.

7. Staff costs

During the financial year there were no employees. Independent contractors were engaged as and when required.

8. Trustees remuneration, benefits and expenses

Trustees received no remuneration or benefits in this period. All amounts reimbursed to trustees were in respect of expenses properly incurred.

9. In-kind contribution and third party relations

Manvers Waterfront Boat Club Limited have supported the establishment of Manvers Lake and Dearne Valley Trust Limited (The Trust), and continue to support its development. During the year the Club donated £16,343 to the Trust.

During the period of these accounts, Manvers Lake and Dearne Valley Trading Limited (Co. number 08239180) not make any repayments against the loan given to them by the Trust. £45,348 is still owed to the Trust. There is no interest to be calculated on the loan and repayments are flexible. The terms of the loan will be reviewed annually.

9. In-kind contribution and third party relations

During the period of these accounts, the Trustees recognise the support of their Volunteer. The value of their support amounts to £80,000 of donated time.

10. Building development and land ownership

The trust manages the boathouse that is currently owned by the BCU. The Board at the BCU have voted to surrender their 2008 lease to the Trust together with the disposal of the Boat House to the Trust for the nominal value of £100 plus VAT. This transfer is to take place during the next financial year.

In early 2015 TCN (uk) Ltd having developed/built out the site, and sold all the plots, wished to exit the site and in doing so they offered the Trust their residual interests in the form of their 999 year lease. This lease also included some unoccupied parcels of land, some public access land and land around the Boat House.

The expenditure that makes up the Levy is a Management Fee, Insurance, plus various onsite maintenance obligations, Litter collection, Grass cutting, hard surfaces, bridges, security and signage being examples of the main TCN (uk) Ltd outgoings.

Using the Fair Value approach, the Trustees have decided that the land has a value and should be shown as an asset of £15,000.

11. Previous year's comparison

Previous year's figures have been included where available.

MANVERS LAKE AND DEARNE VALLEY TRUST LTD

England & Wales - Charity number 1150159

Accounts



Accountancy Solutions

Manvers Lake and Dearne Valley Trust Limited

Financial statements for the
year ended 31st January 2021

Charity number: 1150159
Registered England and Wales

Company number: 07521620
Company limited by guarantee

Manvers Lake and Dearne Valley Trust Limited
Contents of the financial statements
for the year ended 31st January 2021

	Page
Administrative Details	1
Directors (Trustees Report)	2 – 5
Independent Examiners Report	6
Income and Expenditure Account	7
Balance Sheet	8
Notes to the accounts	9 - 12

Manvers Lake and Dearne Valley Trust Limited
Administrative details
for the year ended 31st January 2021

Registered Charity number	1150159
Registered Company number	07521620
Directors (Trustees)	Christopher Hawkesworth Mark Benton Mr Christopher Wordsworth Mrs Maria Rodgers
Company Secretary	Mark Benton
Principle address	The Boat House Station Road Rotherham Station Road S63 7DG
Bankers	HSBC Bank Plc. 35 College St, Rotherham S65 1AF
Independent Examiner	Heera Singh FMAAT HSL Accountancy Solutions Enterprise House 61a Carr House Doncaster DN1 2BY

Manvers Lake and Dearne Valley Trust Limited
The Directors (trustees) present their annual report
for the year ended 31st January 2021

The trustees, are also directors of the charity for the purposes of the Companies Act, submit their annual report and financial statements for the year ended 31st January 2021.

Exemptions

The trustees have taken advantage of the exemptions available to small companies, including the audit exemption (see statement on balance sheet).

Structure, governance and management

The Organisation is operated under the rules of its memorandum and articles of association, adopted on 8th February 2011 and last updated on 12th December 2012.

Organisational structure

The organisations is a company limited by guarantee, and has no share capital. The Directors liability is limited to £1. The organisation also a registered Charity from 13th December 2012. The overall management of the organisation is the responsibility of the trustees who are appointed under the terms of the governing document.

Aims and objectives

To promote community participation in healthy recreation in safe and pleasant surroundings in an environmentally sustainable manner by providing facilities for canoeing, cycling, running, sailing, swimming, angling, triathlon, quadrathlon, stand-up-paddle boarding [SUP], model boating, and windsurfing to the communities of Rotherham, Doncaster, Barnsley and the surrounding areas.

Public Benefit Statement

The trustees of Manvers Lake and Dearne Valley Trust ["Trust"] confirm that they have complied with their duty under section 17(5) of the Charities Act 2011 to have regard to the Charity Commission's guidance on public benefit and that the public benefit requirement has informed the activities of the Trust in the year to January 31st 2021.

The Manvers Lake and Dearne Valley Trust Ltd [Trust] is the umbrella organisation of all Boathouse, Manvers Lake and most Parkland activities. To this end it has close and common links with 3 other limited liability companies all of which are "Not for profit" companies without a share holding and limited by guarantee. Any surpluses from these companies are donated to the Trust. The Trust has close links to the community through its partnership with The Dearne Valley College (RNN Group) and Rotherham Borough Council both of whom have board voting representation.

Summary of Main Activities

The core activities of the Trust are:

- Maintaining and developing the Boathouse, Manvers Lake and surrounding park land.
- Ensuring that the general public can use the permissive paths and other lands surrounding the lake in a clean clear and safe manner.
- Delivery of a comprehensive year-round programme of sporting, fitness and general well-being activities
- Providing an Outreach Programme to schools and other group users of our facilities
- Offering support and advice to the public on matters related to water sports and other associated sports.
- Offering a venue for education and training for all 3 "Blue light" services, the NHS, Universities, Companies and Educational establishments.

Our philosophy is to offer access to all regardless of personal circumstances, race, gender, ability, or faith. The Trust operates mainly in Rotherham, Doncaster, and Barnsley. However, visitors do come from further afield. The weekly Club programme is open to all members and some of the weekly program is open to all others, this includes non-members and disabled athletes who regularly take part in our programmes.

The Lake and the Boathouse provides a focus for our activities and it is estimated that the lake attracted over 300,000 visitors this year, most taking part in some form of active recreation. Manvers Waterfront Boat Club members now number over 1500, an increase of nearly 80% in the year. These and other boathouse users account for over 51,000 of visits. Members use the facilities for Canoeing, Kayaking, SUP [Stand-up-paddle-boarding], Dragon Boating, Cycling, Running, Sailing, Open Water Swimming, Triathlon, Quadrathlon, Angling, Model Boating, Walking and Windsurfing, plus, associated social, training and educational sessions. Fees are charged for club membership, but these are kept at a low level.

The Trust wishes to be an example of best practice and to this end it is affiliated via the Linked Manvers Waterfront Boat Club [Club] and is signed up to the policies of: Sport England, British Canoeing, British Triathlon, British Swimming, Royal Yachting Association, The Angling Trust, British Athletics, British Quadrathlon Association, British Dragon Boating Association [BDA], AALA and RoSPA.

Summary of Main Activities (Continued)

The Trust and Club are supported by and have close links with Sport England, South Yorkshire County Sports Partnership, the Environment Agency, The Canal and River Trust, Rotherham, Barnsley and Doncaster Councils, MPs and Councillors, The South Yorkshire Police, Ambulance and Fire & Rescue Services and regional NHS. The Trust welcomed a number of students studying with Sheffield Hallam University Business School to do their 120 work placement projects. Students worked with the trust directors, researching and analysing the possible future development of the facilities around the boathouse and reviewed all aspects of Estate Charge.

The Trust and Club provide training courses for members and volunteers in for example: Coaching, Disability Awareness, Child Protection, and Health and Safety issues. Key personnel are DBS checked. Club members have continued to use the facilities and the café has remained open as a “Takeaway” within government guidelines.

Key achievements for 2020- 21

Covid-19

Due to the Covid-19 pandemic activities this year have been severely curtailed in some areas and very much expanded in others. All Club and other “Events” had to be cancelled, whilst footfall from the local public taking exercise increased. The Trust ceased their and club activities on the site from March to May with complete loss of revenue. The Parkland remained open to the public throughout, which brought additional litter collection, “Anti Social Behaviour” and other management issues. Since May, limited Club and Café activities have recommenced. The Boathouse has had to remained closed to the public due to the design of its facilities being such that the Trust has not been able to provide a “Covid-19” secure environment.

Freehold purchase.

The Trust successfully concluded the purchase of the Freehold of Manvers Lake and surrounding leisure area from Rotherham Council.

Environment Agency land leased.

The Trust has successfully completed negotiations with the Environment Agency for approximately 2 km of Fishing and boating rights on a stretch of the River Dearne at Darfield and the River Don at Kilnhurst. The water, approximately 2 km at each site includes access to and along the river banks.

Harron residential leaseholds acquired.

The negotiations for the Trust to obtain the freehold of 98 houses owned by Harron Homes [Phases 1,2, and 3] have been completed and were transferred to the Trust within the year.

British Canoeing lease surrender.

At the request of the Trust the board of British Canoeing agreed in December 2019 to surrender, then transfer and merge the British Canoe Union 2008 Lease of the lake and original boat house into the ownership of the Trust. Legal details are on-going for all matters to be completed during 2021-22.

TCN/Express Park Land purchased.

The Trust completed the purchase of a small parcel of TCN/Express Park Land adjacent to the Boathouse.

Car Park improvement.

In June to discharge part of a Rotherham Council planning condition the Trust tarmacked and white lined the boathouse car park, providing 2 bays for the disabled and 2 bays for electric cars together with the associated charging equipment. The trust has also improved the lighting around the car park and the slalom pond.

Land and buildings ownership and management

The Freehold of various plots of land to the North of Manvers Way, the South side of the Lake between the RSPB in the West to Station Road in the East, were transferred to the Trust in 2015. The Trust maintains the land and manages the collection of an “Estate” service charge and Freehold levy from applicable lessees. The money raised is a ring fenced contribution to the on-going maintenance of specific geographical areas and facilities open to the public. Covid-19 unexpectedly increased substantially the local footfall onto the “Estate” and as a consequence a significant amount of additional resource has had to be put into not only dealing with practical site issues such as grass cutting, litter removal, dog faeces, reed removal, bridge repairs, and anti-social behaviour but, also into handling ongoing leaseholder and residents queries.

Estate services delivery.

Delivery of “Estate” services is mainly achieved by working in partnership with volunteers from the club, other organisations such as local litter picking groups and the Manvers Lake and Dearne Valley Trading Ltd. “Trading” the operational delivery arm of the Trust. We all work together to ensure the lake and surrounding parkland is well maintained, safe and kept clean and tidy. We strive to deliver good value for money for managing this space for the local community and lake visitors.

One on-going big issue is site inconsistencies. It should not be forgotten that this whole site was remediated and regenerated out of the Manvers Main Colliery and Wath coking works. Though now decontaminated and fully built up there is a jigsaw historical legacy of Leases and freeholds. Working with all appropriate partners the Trust is attempting on a once and for all basis to identify anomalies, thence to clean up, merge and rectify. This effort has proved to be more complex, lengthy and costly than anticipated and though much has been achieved it will be ongoing for at least the coming year.

Boat Store Annex

While the Trust has invested a significant amount time and resources and into the first 3 phases of developing the boathouse Annex. The work so far has enable the Trust and Club to continue its good work to increase lake and site use. The predicted rise in participation has occurred and though the Annex has given us more room to store canoes, boats, event, safety and site maintenance equipment, it is already full to capacity and further 3 phases are planned during 2021 and 2022.

Visitors to Manvers Lake

The number of visitors to Manvers Lake and the reason for their visits are recorded daily. Using these statistics, it is possible to estimate that the lake has attracted approximately 300,000 visitors during the year.

We record the number of people that use the building, this includes club member visits, café users, people that hire rooms etc. This was just over 51,000 in the year.

All that the trust and its linked companies have achieved last year would not have been possible without the support of employees, the club members, volunteers, donors, affiliates, local residents, committee, directors and trustees.

AALA

The Trust provides Outdoor Adventurous Activities to young persons and holds the requisite AALA license so that it can arrange activities for under 18s who are not members of the club.

Websites

The Trust and the Club operates three websites. These continue to develop and offer both club members and the general public information.

Café

The café provides light snacks and drinks to Boathouse and lake users. Because of Covid-19 regulations the inside facilities have been out of use for 11 months with a take away service operating when Covid-19 guidelines allowed.

Dearne Valley College – RNN

The strategic partnership with the College continues to grow and develop. The Trust sees this partnership and its future as extremely beneficial to both parties. The rural environment of the lake compliments the urban environment of the college. Hence the college can offer additional education and sporting opportunities to their students and the Trust and the Club can offer a pathway into participation coaching and management of several sports.

Reserve Policy

Given the relative stability and wide spread of income the trustees feel that a minimum of 3 months running costs would be sufficient to be kept in reserve. We have achieved this and will continue with this policy. Reserves during the year have increased to 4 months and will be subject to annual and seasonal review and will be increased further as appropriate to reflect changes in turnover and liabilities.

Financial review of the year

During the year the trustees feel the organisation has performed well given the “unprecedented” Covid-19 pandemic.

Risk management

The trustees have assessed the major risks to which the charity is exposed and are satisfied that adequate and appropriate systems are in place to mitigate the exposure to both financial and other risks.

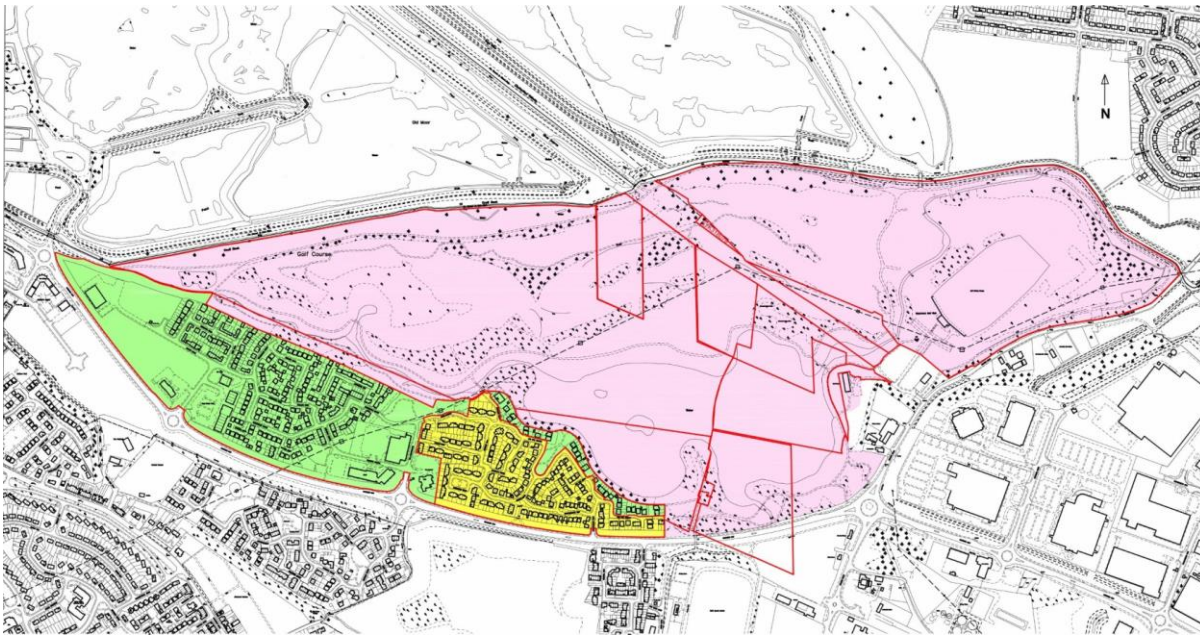
Manvers Lake and Dearne Valley Trust Limited
The Directors (trustees) present their annual report
for the year ended 31st January 2021

Land Ownership

The Trust, now has the Freehold ownership of Manvers lake, the southside of the lake and land around the boathouse. Coloured Pink on the Map below.

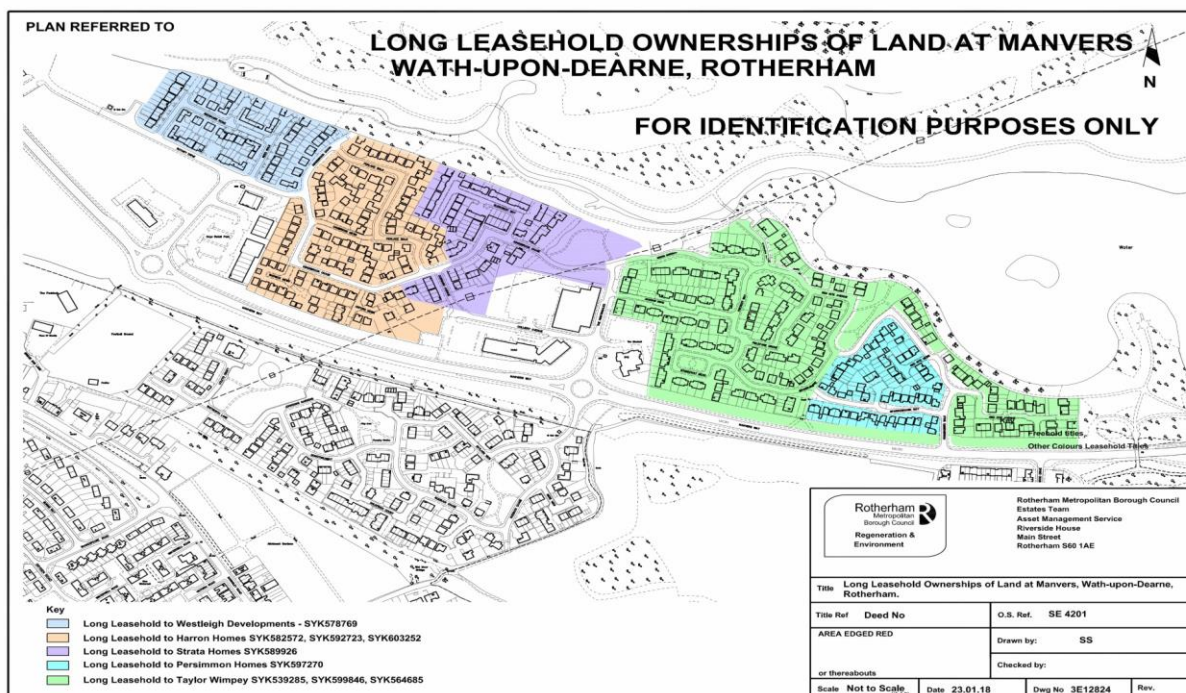
A “Estate” levy is paid by residents and business occupiers towards maintenance of this area. Known as “The Southside”. The Trust annually reports and publishes an abstract of these accounts to tenants and hosts an annual budget review meeting each autumn.

Freehold Map for Identification only.



Pink – Trust Leisure land Freehold.
Green – Estate “Southside” Levy payers.
Yellow - Avon Ground Rents

Residential Leasehold Plans.



Manvers Lake and Dearne Valley Trust Limited
The Directors (trustees) present their annual report
for the year ended 31st January 2021

Plans for the future

There is still much work to be done by the Trust. Grant aid nationally appears to be reducing, hence limiting potential grant aid for projects that we wish to undertake. Therefore patience, saving and fund raising is needed in equal measure.

Statement of Directors and Trustees' responsibilities

The trustees (who are also the directors of the Company for the purposes of company law) are responsible for preparing the Trustees' Annual Report and the financial statements in accordance with applicable law and United Kingdom Accounting Standards (United Kingdom Generally Accepted Accounting Practice).

Company law requires the trustees to prepare financial statements for each financial year which give a true and fair view of the state of affairs of the charitable company and the group and of the incoming resources and application of resources, including the income and expenditure of the charitable company and the group for that period. In preparing these financial statements, the trustees are required to:

- select suitable accounting policies and then apply them consistently;
- observe the methods and principles in the charities SORP;
- make judgements and estimates that are reasonable and prudent;
- state whether applicable UK Accounting Standards have been followed, subject to any material departures disclosed and explained in the financial statements;
- prepare the financial statements on the going concern basis unless it is inappropriate to presume that the charitable company will continue in business.

The trustees are responsible for keeping proper accounting records which disclose with reasonable accuracy at any time the financial position of the charitable company and of the group and enable them to ensure that the financial statements comply with the Companies Act 2006. They are also responsible for safeguarding the assets of the charitable company and the group and hence for taking reasonable steps for the prevention and detection of fraud and other irregularities.

The trustees declare that they have approved the above report. Signed on behalf of the trustees

Signed: 
Name and position: Chris Hawkesworth, Director

Date: 21st September 2021

Signed: 
Name and position: Mark Benton, Director

Date: 21st September 2021

**Independent examiners report to the trustees of
Manvers Lake and Dearne Valley Trust Limited
for the year ended 31st January 2021**

I report on the financial statements of the Manvers Lake and Dearne Valley Trust Limited for the period ended 31st January 2021 which are set out on pages 8 to 13.

Respective responsibilities of trustees and examiner

The charity's trustees (who are also the directors of the Company for the purposes of company law) are responsible for the preparation of the accounts. The charity's trustees consider that an audit is not required for this year under section 144(2) of the Charities Act 2011 (the 2011 Act) and that an independent examination is needed.

Having satisfied myself that the charity is not subject to audit under company law and is eligible for independent examination, it is my responsibility to:

- examine the accounts under section 145 of the 2011 Act;
- follow the procedures laid down in the general Directions given by the Charity Commission under section 145(5)(b) of the 2011 Act; and
- state whether particular matters have come to my attention.

Basis of independent examiner's report

My examination was carried out in accordance with the general Directions given by the Charity Commission. An examination includes a review of the accounting records kept by the charity and a comparison of the accounts presented with those records. It also includes consideration of any unusual items or disclosures in the accounts, and seeking explanations from you as trustees concerning any such matters. The procedures undertaken do not provide all the evidence that would be required in an audit and consequently no opinion is given as to whether the accounts present a "true and fair view" and the report is limited to those matters set out in the statement below.

Independent examiner's statement

In connection with my examination, no matter has come to my attention:

1. which gives me reasonable cause to believe that, in any material respect, the requirements:

- to keep accounting records in accordance with section 386 of the Companies Act 2006; and
- to prepare accounts which accord with the accounting records and comply with the accounting requirements of section 396 of the Companies Act 2006 and with the methods and principles of the Statement of Recommended Practice: Accounting and Reporting by Charities:

have not been met; or

2. to which, in my opinion, attention should be drawn in order to enable a proper understanding of the accounts to be reached.



Mr Heera Singh FMAAT
HSL Accountancy Solutions Ltd
Enterprise House
61a Carr House
Doncaster
DN1 2BY

Date: 21st September 2021

Manvers Lake and Dearne Valley Trust Limited
Statement of Financial Activities (Incorporating the Income and Expenditure Account)
for the year ended 31st January 2021

	Unrestricted Funds	Restricted Funds	Total 2021	Total 2020
	£	£	£	£
Income and endowments from:				
Grants and donations	112,505		112,505	44,833
Charitable activities	61,752		61,752	46,385
Other	1,729		1,729	384
Total	175,986	0	175,986	91,602
Expenditure on:				
Raising funds	452		452	1,015
Charitable activities	75,611	3,139	78,750	87,545
Other				0
Total	76,063	3,139	79,202	88,560
Net income/(expenditure)	99,922	-3,139	96,784	3,042
Total funds brought forward	225,558	313,826	539,384	537,035
Prior year adjustment	0	0	0	-693
Total funds carried forward	325,480	310,687	636,168	539,384

The Statement of Financial Activities includes all gains and losses in the year and therefore a statement of total recognised gains and losses has not been prepared. All the above amounts relate to continuing activities.

Manvers Lake and Dearne Valley Trust Limited
Balance sheet
As at 31st January 2021

	Notes	2021 £	2020 £
Fixed Assets		540,280	486,851
Current Assets			
Debtors		32,069	24,871
Cash at bank & in hand		<u>64,418</u>	<u>36,379</u>
		96,488	61,250
Current Liabilities			
Creditors - amounts due within one year		<u>-600</u>	<u>-8,716</u>
Net current assets		95,888	52,533
Long Term Liabilities			
Creditors - amounts due after one year		0	0
Net assets		<u>636,168</u>	<u>539,384</u>
Funds of the company			
Unrestricted Funds		325,480	225,558
Restricted Funds		<u>310,687</u>	<u>313,826</u>
Total funds		<u>636,168</u>	<u>539,384</u>

For the year ended 31st January 2021, the company is entitled to the audit exemption under section 477 (2) of the Companies Act 2006.

The members have not required the company to obtain an audit in accordance with section 476 of the Companies Act 2006.

The directors acknowledge their responsibilities for:

- a) ensuring the company keeps accounting records which comply with section 386; and
- b) preparing accounts which give a true and fair view of the state of affairs of the company as at the end of the financial year, and its profit or loss for the financial year, in accordance with the requirement of the companies Act 2006 relating to accounts, so far as is applicable to the company.

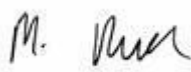
These accounts have been prepared in accordance with the provisions applicable to companies subject to small companies' regime.

The directors declare that they have approved the accounts above.

Signed on behalf of the company's directors:

Signed: 
 Name and position: Chris Hawkesworth, Director

Date: 21st September 2021

Signed: 
 Name and position: Mark Benton, Director

Date: 21st September 2021

1. Accounting policies

1.1.1. Basis of preparation

These accounts (financial statements) have been prepared under the historic cost convention, with items recognised at cost or transaction value, unless otherwise stated in the relevant note(s), in accordance with:

- The Charities Act 2011
- The Companies Act 2006
- The Financial Reporting Standard applicable in the UK and the Republic of Ireland: FRS102
- Accounting & Reporting by Charities: Statement of Recommended Practice (Charities SORP FRS102) (effective January 2015)

1.1.2. The charity meets the definition of a public benefit entity as defined by FRS 102

1.1.3. The trustees consider that there are no material uncertainties about the charity's ability to continue as a going concern.

1.2. Incoming resources

These are included in the Statement of Financial Activities. Incoming resources are recognised when:

- the company becomes entitled to the resources
- the trustees are virtually certain they will receive the resources; and
- the monetary value can be measured with sufficient reliability

Where incoming resources have related expenditure (as with fund-raising or contract income) the incoming resources and related expenditure are reported gross in the Statement of Financial Activities.

Grants and donations are only included in the Statement of Financial Activities when the company has unconditional entitlement to the resources.

Contractual income is only included in the Statement of Financial Activities once the related goods or performance related services have been delivered. Investment income is included in the accounts when receivable.

1.3. Expenditure

Expenditure is charged to the Statement of Financial Activities on an accruals basis, inclusive of any VAT which cannot be recovered. Expenditure is classified under headings that aggregate all costs related to that category. Where costs cannot be directly attributed to particular headings they have been allocated to activities on a basis consistent with the use of resources.

Charitable expenditure comprises those costs incurred in the delivery of the charity's activities and services for its beneficiaries, including both direct and support costs. The expenditure has been analysed but usage. Professional fees include those costs associated with meeting constitutional and statutory requirements, including Accountancy fees.

1.4. Fund accounting

Restricted funds are funds received from donors which are subject to restrictions on the purposes for which they may be used of which have been raised for a specific project. Unrestricted funds are those where there are no externally imposed restrictions. These include funds freely available to the charity for expenditure or appropriation to reserves for internally designated purposes.

1.5 Assets

Tangible assets are capitalised if they can be used for more than one year, and cost at least £250. They are valued at cost, or, if gifted, at the value to the company on receipt.

The rates applicable are;

Kitchen furniture and equipment	20% Straight line
Furniture	20% Straight line
Land and buildings	1% Reducing balance

1.6. Debtors

Debtors are recognised at the settlement amount due. Prepayments are valued at the amount prepaid.

1.7. Cash

Cash comprises bank deposits repayable on demand and any short-term highly liquid investments with a maturity date of three months or less from the date of acquisition or opening of the deposit or similar account.

Manvers Lake and Dearne Valley Trust Limited
Notes to the financial statements
for the year ended 31st January 2021

1.8. Creditors

Creditors are recognised where the charity has a present obligation resulting from a past event that will probably result in the transfer of funds to a third party and the amount due to settle the obligation can be measured or estimated reliably. Creditors are normally recognised at their settlement amount, usually the invoice amount. Accrued charges are normally valued at their settlement amount.

1.9. Taxes

The company is not VAT registered. As a Charity the company is exempt from taxation on income and gains falling within section 505 of the Taxes Act 1988 or s256 of the Taxation of chargeable gains Act section 505 of the Taxes Act 1988 or s256 of the Taxation of chargeable gains Act 1992 to the extent that these are applied to its charitable objects.

2. Grants

During the period of these accounts the Charity did not receive any grants.

3. Expenditure on

	General Fund £	Restricted Fund £	Total 2021 £	Total 2020 £
Bank charges	4,688		4,688	4,572
Building maintenance and development	6,713		6,713	763
Building security	144		144	6,334
Building sundries	1,798		1,798	1,617
Car parking machine	701		701	526
Cost of raising funds	452		452	1,015
Depreciation	6,792	3,139	9,931	8,355
Donations	40		40	200
Equipment, repairs and renewals	950		950	2,692
Insurances	4,066		4,066	6,886
Licenses	230		230	493
Professional fees	1,280		1,280	1,020
Rates	310		310	2,344
Staff costs	4,500		4,500	0
Telephone and internet	1,214		1,214	1,181
Utilities	7,675		7,675	17,664
Volunteers hours	32,500		32,500	32,800
Volunteer expenses	2,010		2,010	98
Total	76,063	3,139	79,202	88,560

4. Tangible fixed assets

	Land & Buildings £	General equipment £	Total £
Cost	505,419	13,883	519,302
Additions	57,309	6,050	63,360
Disposals			0
At 31st January 2021	562,728	19,934	582,662
Depreciation			
At 1st February 2020	25,257	7,195	32,452
Charge this period	5,300	4,631	9,931
Disposals			
At 31st January 2021	30,556	11,826	42,382
Net book value at 31st January 2021	532,172	8,108	540,280
Net book value at 31st January 2020	480,162	6,688	486,851

Manvers Lake and Dearne Valley Trust Limited
Notes to the financial statements
for the year ended 31st January 2021

5. Debtors and creditors

	2021	2020
	£	£
Debtors		
Prepayments	1,247	326
Trade debtors	30,823	24,545
	<u>32,069</u>	<u>24,871</u>
Creditors - due within one year		
Trade creditors	-600	-600
Loan repayment*	0	-8,116
	<u>-600</u>	<u>-8,716</u>

6. Movement of funds

	Balance at 01/02/2020	Incoming Resources	Expended Resources	Transfers	Balance at 31/01/2021
	£	£	£	£	£
Unrestricted funds					
General funds	225,558	175,986	-76,063	0	325,480
Restricted funds					
Veolia Environmental Trust	33,313	0	-333	0	32,980
Coalfields Regeneration Trust	23,772	0	-238	0	23,535
Sport England	228,214	0	-2,282	0	225,931
Key Fund	28,527	0	-285	0	28,242
Total funds	<u>539,384</u>	<u>175,986</u>	<u>-79,202</u>	<u>0</u>	<u>636,168</u>

Veolia Environmental Trust funding was towards the building foundations.

Coalfields Regeneration Trust, Coalfields Community Enterprise Award funding was towards the construction costs of the new building

Sport England funding was a contribution towards the new building.

Key Fund who were working on behalf of "Power to Change" who are funded by The Big Lottery Fund– this was a grant towards completion of the building.

The above grant expenditure has been capitalised and will be reduced by the charge of depreciation on an annual basis.

7. Staff costs

During the financial year there were no employees. Independent contractors were engaged as and when required.

8. Trustees remuneration, benefits and expenses

Trustees received no remuneration or benefits in this period. All amounts reimbursed to trustees were in respect expenses properly incurred.

9. In-kind contribution and third party relations

Manvers Waterfront Boat Club Limited have supported the establishment of Manvers Lake and Dearne Valley Trust Limited (The Trust), and continue to support its development. During the year the Club donated £15,200 to the Trust.

During the period of these accounts, Manvers Lake and Dearne Valley Trading Limited (Co. number 08239180) not make any repayments against the loan given to them by the Trust. £25,950 is still owed to the Trust. There is no interest to be calculated on the loan and repayments are flexible. The terms of the loan will be reviewed annually. The company also made donations to the value of £45,000.

9. In-kind contribution and third party relations

During the period of these accounts, Manvers Lake and Dearne Valley Events Limited (Co. number 08239187) donated £2,900 to the Trust.

During the period of these accounts, the Trustees recognise the support of their Volunteer. The value of their support amounts to £32,500 of donated time.

10. Building development and land ownership

The trust manages the boathouse that is currently owned by the BCU, there is a gentleman's agreement that the building will be sold to the Trust for £100 in 2018.

In early 2015 TCN (uk) Ltd having developed/built out the site, and sold all the plots, wished to exit the site and in doing so they offered the Trust their residual interests in the form of their 999 year lease. This lease also included some unoccupied parcels of land, some public access land and land around the Boat House.

On December 25th 2015 the Trust acquired all TCN (uk) Ltd's remaining interests in their Manvers Waterfront Site and with it the ability to Invoice and receive the levy and recover any arrears.

The expenditure that makes up the Levy is a Management Fee, Insurance, plus various onsite maintenance obligations, Litter collection, Grass cutting, hard surfaces, bridges, security and signage being examples of the main TCN (uk) Ltd outgoings.

Using the Fair Value approach, the Trustees have decided that the land has a value and should be shown as an asset of £15,000.

11. Previous year's comparison

Previous year's figures have been included where available.