

**ESCAPE INTERVENTION SERVICES LTD.
DIRECTORS' REPORT AND
FINANCIAL STATEMENTS
FOR THE YEAR ENDED 28 FEBRUARY 2025**

Escape Intervention Services Ltd.
Contents

| | Page |
|---|-------------|
| Company Information | 1 |
| Directors' Report | 2 |
| Trustees' Annual Report | 3 |
| Accountant's Report | 7 |
| Income and Expenditure Account | 8 |
| Balance Sheet | 9 |
| Notes to the Financial Statements | 10-12 |

The following pages do not form part of the statutory accounts:

**Escape Intervention Services Ltd.
Company Information
For The Year Ended 28 February 2025**

Directors

Mrs Christine Rushton
Mr Malcolm Payne
Mrs Angela Jones
Mrs Nicola Cramer
Mr Philip Cox

Secretary

Mrs Angela Jones

Company Number

05366111

Registered Office

3 Waverley
Market Dock
South Shields
Tyne And Wear
NE33 1LE

Accountants

KP Simpson Ltd
Certified Public Accountants
172-174 Albert Road
Hebburn
NE32 5JA

Escape Intervention Services Ltd.
Company No. 05366111
Directors' Report For The Year Ended 28 February 2025

The directors present their report and the financial statements for the year ended 28 February 2025.

Directors

The trustees who held office during the year were as follows:

Mrs Christine Rushton
Mr Malcolm Payne
Mrs Angela Jones
Mrs Nicola Cramer
Mr Philip Cox

Statement of Directors' Responsibilities

The directors are responsible for preparing the Directors' Report and the financial statements in accordance with applicable law and regulations.

Company law requires the directors to prepare financial statements for each financial year. Under that law the directors have elected to prepare the financial statements in accordance with United Kingdom Generally Accepted Accounting Practice (United Kingdom Accounting Standards and applicable law). Under company law the directors must not approve the financial statements unless they are satisfied that they give a true and fair view of the state of affairs of the company and of the surplus or deficit of the company for that period. In preparing the financial statements the directors are required to:

- select suitable accounting policies and then apply them consistently;
- make judgments and accounting estimates that are reasonable and prudent;
- prepare the financial statements on the going concern basis unless it is inappropriate to presume that the company will continue in business.

The directors are responsible for keeping adequate accounting records that are sufficient to show and explain the company's transactions and disclose with reasonable accuracy at any time the financial position of the company and enable them to ensure that the financial statements comply with the Companies Act 2006. They are also responsible for safeguarding the assets of the company and hence for taking reasonable steps for the prevention and detection of fraud and other irregularities.

The directors are responsible for the maintenance and integrity of the corporate and financial information included on the company's website. Legislation in the United Kingdom governing the preparation and dissemination of financial statements may differ from legislation in other jurisdictions.

Small Company Rules

This report has been prepared in accordance with the special provisions relating to companies subject to the small companies regime within Part 15 of the Companies Act 2006.

On behalf of the board



Mr Philip Cox
Director
22/07/2025

**ESCAPE INTERVENTION SERVICES LTD
COMPANY LIMITED BY GUARANTEE
TRUSTEES' ANNUAL REPORT
YEAR ENDED 28 FEBRUARY 2025**

This year we achieved our aims by delivering the following services:

- **Counselling**
- **Personal development through outdoor/creative activities**
- **Volunteering opportunities**
- **Sessional staff opportunities**
- **Complementary therapies**
- **Donations of clothing, household items, feminine hygiene products, toiletries, cleaning products etc**

Our services complement both Local and National Government Strategic plans and priorities, and we participate in local forums and working parties that contribute to aligning the development of future services with the needs of local children, young people, and families.

Achievement and Performance:

- We continued to provide face-to-face sessions for counselling, having received 312 referrals this year.
- We worked within Public Health priorities outlined in the Mental Health Transformation Plan to deliver both short-term and long-term counselling dependent on the issues and traumatic experiences of clients, by delivering 3150 counselling sessions throughout the year, which included 900 being delivered in schools. Our full-time Counsellor and sessional Counsellors/Psychotherapists were funded through the generous donations from National Lottery Community Fund, Awards for All, William Leech Charity and the Magdalen Hospital Trust.
- We carried out 301 assessments for counselling/psychotherapy.
- We have worked with 16 qualified Sessional Counsellors/Psychotherapists and 2 trainee Counsellors/Psychotherapists, who have contributed to the success of our counselling provision, which has seen clients progress and address their mental health issues, including bereavement/loss and adverse childhood experiences.
- We have worked with approximately 400 young people through our activity programmes, as we have returned to normal delivery levels. These outdoor and creative activities include:
 - kayaking, surfing, paddle boarding
 - ghyll-scrambling in the Lake District
 - cycling repair and maintenance sessions, and expeditions
 - bowling, quasar laser fun activities
 - art/creative groups for young women and young men
 - climbing sessions at Simonside Climbing Wall
 - boxing sessions at Harton & Westoe Boxing Club
 - fishing on the River Tyne
 - family events
 - weekend residential experiences at Mounthooly in Northumberland, Whithaugh Park in the Borders, Dalby Forest in Yorkshire (skiing/snowboarding), and the Ocean Youth Trust training vessel James Cook. The Youth Hostel Association donated a free weekend for families in their accommodation at Buttermere, so 40 people attended and this was a huge success which is going to be repeated each year.

These activities have been made possible by funding from The Hedley Foundation, Cleadon Rotary Club, Know Your Neighbourhood Fund and Sport England.

- We have utilised 8 Sessional Activity Workers throughout the year to support delivery of activities and enhance the life chances and experiences of young people attached to our service.
- We continued to work in complementary partnership with other statutory and voluntary organisations to enhance the South Tyneside offer that supports children, young people, and families, including kinship carers, to become physically, mentally, emotionally, and psychologically healthier. These organisations include: CREST, Key (homelessness), Matrix, Women's Aid (Refuge), Lifecycle, Children and Young People's Service (CYPs), WAVES, Auxilia Youth, schools, GP practices, Humankind, Leaving Care, Changing Lives, Liaison and Diversion Team, Social Workers, Early Help Team, Young Carers, Families First, Youth Justice Service, Impact Family Services and Health Visitors, Tyneside Outdoors etc.

- We reviewed our Policies and Procedures in line with Local Authority recommendations.
- Our Volunteer Complementary Therapist delivered 191 therapy sessions to reduce anxiety, depression, and stress, together with promoting positive physical health benefits of regular massage etc.

**ESCAPE INTERVENTION SERVICES LTD
COMPANY LIMITED BY GUARANTEE
TRUSTEES' ANNUAL REPORT (continued)
YEAR ENDED 28 FEBRUARY 2025**

Provision:

The Service Manager oversees every aspect of service delivery and its development.

Counselling:

We have offered a range of therapies including Cognitive Behavioural Therapy (CBT), Psychotherapy, Play Therapy, Person-Centred Therapy, and Integrative Therapy as a direct response to the diverse range of presenting issues.

We received 312 referrals for counselling and assessments were carried out to ascertain suitability for our interventions. All cases were deemed suitable, and clients were then put onto our allocation list, which is impacted by the fact that we do not deliver time-limited interventions due to the complexity of the trauma experienced by children, young people and adults accessing our services.

- ❖ 18 Counsellors/Psychotherapists have delivered sessions at our office base and in schools.
- ❖ Funding from the Awards for All, National Lottery Community Fund, Know Your Neighbourhood Fund, The Magdalen Hospital Trust, The Postcode Neighbourhood Trust and William Leech Charity have enabled us to remunerate 16 Qualified Sessional Counsellors and Psychotherapists for their professional delivery of counselling and reimburse travel expenses for two trainees.
- ❖ All Counsellors and Psychotherapists receive external monthly Clinical Supervision in line with BACP and UKCP guidelines.
- ❖ 301 assessments for mental health support were carried out.
- ❖ 3150 sessions of counselling were delivered.
- ❖ 280 clients aged 4-25years and their parents/carers received counselling.
- ❖ We currently have 65 clients on our waiting list.

Complementary Therapies:

These are delivered by our qualified Therapist who offers six free sessions to young people and adults associated with our service, which include:

- ❖ Aromatherapy massage
- ❖ Hand, arm and back massage
- ❖ Indian head massage
- ❖ Hot stones massage
- ❖ Reflexology
- ❖ Crystal healing
- ❖ Reiki

191 sessions were delivered to 40 clients to alleviate symptoms of anxiety, depression, stress, and physical ailments impacting on their health and wellbeing.

Activity Programmes:

We have delivered a range of outdoor, adventurous, and creative activities since employing our dedicated Activity Co-ordinator through National Lottery Community funding. She has been instrumental in adopting our holistic approach to the health and wellbeing of local youth by supporting them directly and indirectly through liaising with their parents/carers so we are kept aware of any additional challenges they may experience that is impacting on their lives. We have been mindful of the increased anxieties felt by young people aged 11-18 years, many of whom have become accustomed to being socially isolated and reticent about socialising with others, including at school. We are hopeful that the coming year will enable us to deliver more activities to complement our counselling provision and benefit our community by encouraging young people to become more active, through a range of grants, including Sport England, who have supported our work for several years.

We continue to struggle to recruit Sessional Youth Workers; however, several of our young people have now become Volunteers, which is beneficial for them and our organisation. Our pool of Sessional Activity Workers and Volunteers have been instrumental in enabling us to deliver high quality, adventurous and creative pursuits.

We have delivered the following:

- ❖ 400 young people have participated in a programme of activities including:
- ❖ kayaking, surfing, paddle boarding
- ❖ ghyll-scrambling in the Lake District
- ❖ cycling repair and maintenance sessions, and expeditions
- ❖ bowling, quasar laser fun activities

- ❖ art/creative writing group for young women
- ❖ weekend residential experiences at Mounthooly in Northumberland, Whithaugh Park in the Borders, Dalby Forest in Yorkshire, Buttermere in the Lake District, and the Ocean Youth Trust training vessel James Cook
- ❖ 3 x arts and crafts 10-week programmes
- ❖ 4 x 10 week climbing sessions
- ❖ 4 x 10 week boxing sessions

These activities have been made possible by funding from National Lottery Know Your Neighbourhood Fund, The Hedley Foundation, Cleadon Rotary Club, and Sport England. We have delivered 180 evening activities, 47 full-day activities and 5 residential experiences during this fiscal year.

Resilience Programmes:

We have delivered resilience sessions at our office base to groups of young people as these are instrumental in assisting young people to increase their resilience and face life's challenges. Individual sessions are incorporated into counselling provision too.

Family Mediation:

The Service Manager has delivered several mediation sessions between young people and their parents to help build positive relationships within families and increase community cohesion.

Steering Group:

We have continued to work with our Steering Group of 15 young people to plan, organise, budget for, and evaluate our activity programmes. They have enjoyed meeting fortnightly as social evenings have been arranged and they have also participated in activities they have organised for their peers.

Feedback from clients and participants:

We continue to collate feedback from our counselling clients, parents/carers and participants of our activity programmes to appreciate the impact of our interventions and to understand where, if necessary, any amendments or additions are required to fully address the diverse needs of those individuals accessing our services.

Examples of feedback are as follows:

What has your overall experience been like with Escape?

'Meeting new friends and learning new skills. Trying something new and sharing my experience with others.'

'Overall experience has been amazing, helped massively with bonding with my son.'

'Honestly just amazing. Everyone is so friendly, welcoming, non-judgmental, helpful and very professional.'

The opportunities that escape have given both myself and more so my son is unexplainable. The friendships we have both made thanks to escape are lifelong.

I honestly do not know where my son and I would be without them, both mentally, physically and within our relationship.'

'Our overall experience has been excellent. Communication is always great. Elisha is very good with the kids and is always very friendly and approachable. There has been a good variety of activities that my kids have been involved with and it has given them a chance to try some activities they've never done before – my daughter tried mountain biking, but she wouldn't do it again, but she still gave it a go. Both my kids have SEND and they have been able to join in on all activities and felt included.'

What has been the biggest difference you have seen in your child since being involved with Escape?

'Positive behaviour changes. More courage and bravery. More self-respect and becoming healthier and focusing more on their self-image.'

'Big confidence boost and day to day life and behaviour changes.'

'Since joining Escape my son has grown so much in confidence, maturity, he's trying things he never would do normally. He's starting to recognise his own triggers and emotions a lot more than he used to.'

At one point my son wouldn't let me be out of his sight. Now he goes and waves me off and doesn't even look back

Escape have brought my son on leaps and bounds with all of the activities, counselling and friendships he has made. As cheesy as it sounds, but escape has become more of an extended family to me and my son rather than just a 'service'. Honestly can't thank everyone at escape for everything they do.'

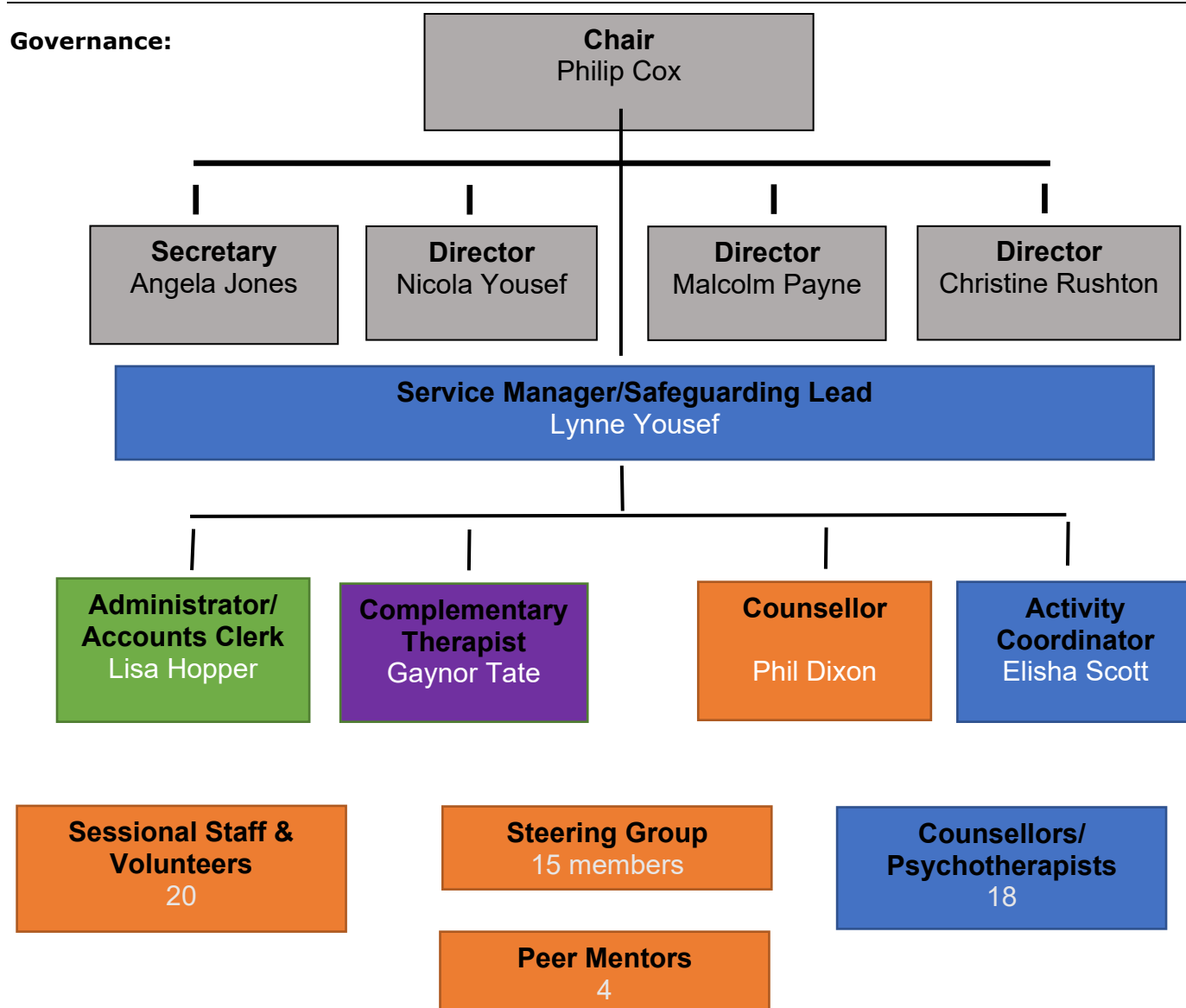
'My daughter is quite quiet, shy and struggled with friendships. Attending activities has given her the opportunity to meet more girls of a similar age and she is starting to build new friendships which is huge for her.'

My son is on the younger side of the age range but has attended some activities both with and without his sister. Attending the activities without his sister has helped him to gain confidence and feel included in a group of kids without his sister being there.

As parents we really do appreciate this service.'

ESCAPE INTERVENTION SERVICES LTD
COMPANY LIMITED BY GUARANTEE
TRUSTEES' ANNUAL REPORT (continued)
YEAR ENDED 28 FEBRUARY 2025

Governance:



External 1-1 Clinical Supervision

Escape Intervention Services Ltd is an organisational member of the British Association of Counsellors and Psychotherapists (BACP) and individuals are also members of the United Kingdom Council for Psychotherapy.

**ESCAPE INTERVENTION SERVICES LTD
COMPANY LIMITED BY GUARANTEE
TRUSTEES' ANNUAL REPORT (continued)
YEAR ENDED 28 FEBRUARY 2025**

Team working:

Escape Intervention Services has a strong team working ethic, which is understood by all Committee Members, staff, sessional staff, volunteers and young people who form part of our Steering Group. Everyone associated with Escape recognises the family values on which Escape has developed and flourished, with all team members being informed of developments, training opportunities and plans for the future.

Due to the nature of our team structure, it is difficult to get everyone together at one time as most of our volunteers and sessional staff work full-time and have their own commitments. We communicate regularly with them through email and keep them abreast of changes or new items to consider. We also have an annual celebration to which everyone is invited, to thank everyone for their commitment and support of our services.

Our celebration event this year was held on Sunday 1 September 2024 at South Shields Football Club, who have become one of our supporters, having given us use of their marquee for free. This event was officially opened by the Mayoress of South Tyneside, Mrs Stella Matthewson, and the Deputy Mayoress, Councillor Audrey Huntley. It was a very successful event attended by almost 200 people and we were entertained by young musicians, Platonic, who were an inspiration to the young people in attendance as they have become very popular on the local music scene due to their talents. This event raised £1,900 towards our core costs and demonstrates the generosity of families associated with our charity.

Plans for the future:

1. We intend to maintain current levels of delivery by identifying and applying for funding through grants and contracts that may be relevant to developing our services.
2. We aim to increase our activity programmes to work with more young people and improve their life chances by engaging them in pursuits they would not normally have access to due to the financial constraints of their families.
3. We shall remain responsive to demand and consider Saturday opening, if and when required, for those who cannot attend our evening sessions which usually end at 8.00pm.
4. We have discussed our future plans to build a purpose-built therapeutic centre with the Chief Planning Officer at the Planning Department of the Local Authority, who is receptive to the idea of a community asset. Discussions are ongoing.
5. We will ensure that policies and procedures are kept up to date and that Governance is conducted professionally.
6. We will continue to contribute to the Local and National Plans and invest in our relationships with partner agencies to ensure young people and families grow and thrive.
7. We are developing a Succession Plan in preparation for the retirement of the Service Manager and to mitigate against any unforeseen changes in the Chair and Trustees' roles.

**ESCAPE INTERVENTION SERVICES LTD
COMPANY LIMITED BY GUARANTEE
TRUSTEES' ANNUAL REPORT (continued)
YEAR ENDED 28 FEBRUARY 2025**

The main financial contributors to assisting us to sustain our charity this year are as follows:

Awards for All
National Lottery Community Fund
National Lottery Know Your Neighbourhood Fund
William Leech Charity
Sport England
Bernard Sunley – pledged
Sir James Knott
Albert Hunt Trust
Ballinger Charitable Trust
Barbour Foundation
Hedley Foundation
Cleaton Rotary Club
The Joicey Trust
Garfield Weston Foundation
Coalfields Regeneration Trust
Asda Foundation
Postcode Neighbourhood Trust
Healthier Together Champions Fund
Rothley Trust
Trusthouse Charitable Foundation
Magdalen Hospital Trust

Escape Intervention Services Ltd.
Accountant's Report
For The Year Ended 28 February 2025

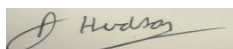
In accordance with the engagement letter dated 17 September 2018, and in order to assist you to fulfil your duties under the Companies Act 2006, we have compiled the financial statements of the company from the accounting records and information and explanations you have given to us.

This report is made to the directors in accordance with the terms of our engagement. Our work has been undertaken to prepare for approval by the directors the financial statements that we have been engaged to compile, to report to the directors that we have done so, and to state those matters that we have agreed to state to them in this report and for no other purpose. To the fullest extent permitted by law, we do not accept or assume responsibility to anyone other than the Company and the Company's directors for our work or for this report.

You have acknowledged on the balance sheet as at year ended 28 February 2024 your duty to ensure that the company has kept proper accounting records and to prepare financial statements that give a true and fair view under the Companies Act 2006. You consider that the company is exempt from the statutory requirement for an audit for the year.

We have not been instructed to carry out an audit of the financial statements. For this reason, we have not verified the accuracy or completeness of the accounting records or information and explanations you have given to us and we do not, therefore, express any opinion on the financial statements.

Signed



22/07/25

KP Simpson Ltd
Certified Public Accountants
172-174 Albert Road
Hebburn
NE32 5JA

**Escape Intervention Services Ltd.
Income and Expenditure Account
For The Year Ended 28 February 2025**

| Notes | Restricted Funds 2025 | Unrestricted Funds 2025 | Total Funds 2025 |
|-------------------------------------|-----------------------------|-------------------------------|------------------------|
| Income From: | | | |
| Donations | 120,682 | 104,178 | 224,860 |
| Total Income | <u>120,682</u> | <u>104,178</u> | <u>224,860</u> |
| Expenditure on: Program Delivery | 148,376 | 59,675 | 208,051 |
| Total Expenditure | <u>148,376</u> | <u>59,675</u> | <u>208,051</u> |
| Operating (Deficit)/Surplus | (27,694) | 44,503 | 16,809 |
| Tax on surplus | | 99 | 99 |
| Net movement in Funds | <u>(27,694)</u> | <u>44,602</u> | <u>16,908</u> |
| Reconciliation of Funds | | | |
| Total funds brought forward | 70,724 | -25,051 | 45,673 |
| Net movement in funds | (27,694) | 44,602 | 16,908 |
| Total funds carried forward | <u>43,030</u> | <u>19,551</u> | <u>62,581</u> |

The statement of financial activities includes all gains and losses recognised in the year

Escape Intervention Services Ltd.
Balance Sheet
As At 28 February 2025

| | | 2025 | | 2024 | |
|---|-------|-----------------|---------------|-----------------|---------------|
| | Notes | £ | £ | £ | £ |
| FIXED ASSETS | | | | | |
| Tangible Assets | 4 | | 5,318 | | 5,841 |
| | | | 5,318 | | 5,841 |
| CURRENT ASSETS | | | | | |
| Debtors | 5 | 100 | | - | |
| Cash at bank and in hand | | 64,689 | | 47,256 | |
| | | 64,789 | | 47,256 | |
| Creditors: Amounts Falling Due Within One Year | 6 | (6,516) | | (6,314) | |
| NET CURRENT ASSETS (LIABILITIES) | | | 58,273 | | 40,942 |
| TOTAL ASSETS LESS CURRENT LIABILITIES | | | 63,591 | | 46,783 |
| PROVISIONS FOR LIABILITIES | | | | | |
| Deferred Taxation | | | (1,010) | | (1,110) |
| NET ASSETS | | | 62,581 | | 45,673 |
| Income and Expenditure Account | | | 62,581 | | 45,673 |
| MEMBERS' FUNDS | | | 62,581 | | 45,673 |

For the year ending 28 February 2025 the company was entitled to exemption from audit under section 477 of the Companies Act 2006 relating to small companies.

The members have not required the company to obtain an audit in accordance with section 476 of the Companies Act 2006.

The directors acknowledge their responsibilities for complying with the requirements of the Act with respect to accounting records and the preparation of accounts.

These accounts have been prepared in accordance with the provisions applicable to companies subject to the small companies' regime.

On behalf of the board

PCox

Mr Philip Cox
Director

22/07/2025

The notes on page 7 form part of these financial statements.

**Escape Intervention Services Ltd.
Notes to the Financial Statements
For The Year Ended 28 February 2025**

1. General Information

Escape Intervention Services Ltd. is a private company, limited by guarantee, incorporated in England & Wales, registered number 05366111. The registered office is 3 Waverley, Market Dock, South Shields, Tyne And Wear, NE33 1LE

The company is also a registered charity under the registration number 1149516, which also gives the company exemption from corporation tax.

2. Accounting Policies

2.1. Basis of Preparation of Financial Statements

The financial statements have been prepared under the historical cost convention and in accordance with Financial Reporting Standard 102 section 1A Small Entities "The Financial Reporting Standard applicable in the UK and Republic of Ireland" and the Companies Act 2006.

2.2. Turnover

Turnover is measured at the fair value of the consideration received or receivable, net of discounts and value added taxes. Turnover includes revenue earned from the sale of goods and from the rendering of services. Turnover is reduced for estimated customer returns, rebates and other similar allowances.

Sale of goods

Turnover from the sale of goods is recognised when the significant risks and rewards of ownership of the goods has transferred to the buyer. This is usually at the point that the customer has signed for the delivery of the goods.

Rendering of services

Turnover from the rendering of services is recognised by reference to the stage of completion of the contract. The stage of completion of a contract is measured by comparing the costs incurred for work performed to date to the total estimated contract costs. Turnover is only recognised to the extent of recoverable expenses when the outcome of a contract cannot be estimated reliably.

2.3. Tangible Fixed Assets and Depreciation

Tangible fixed assets are measured at cost less accumulated depreciation and any accumulated impairment losses. Depreciation is provided at rates calculated to write off the cost of the fixed assets, less their estimated residual value, over their expected useful lives on the following bases:

| | |
|---------------------|----------------------|
| Fixtures & Fittings | 25% reducing balance |
| Computer Equipment | 25% reducing balance |

2.4. Taxation

Income tax expense represents the sum of the tax currently payable and deferred tax.

The tax currently payable is based on taxable surplus for the year. Taxable surplus differs from surplus as reported in the statement of comprehensive income because of items of income or expense that are taxable or deductible in other year and items that are never taxable or deductible. The company's liability for current tax is calculated using tax rates that have been enacted or substantively enacted by the end of the reporting period.

Deferred tax is recognised on timing differences between the carrying amounts of assets and liabilities in the financial statements and the corresponding tax bases used in the computation of taxable surplus. Deferred tax liabilities are generally recognised for all taxable timing differences. Deferred tax assets are generally recognised for all deductible temporary differences to the extent that it is probable that taxable surplus will be available against which those deductible timing differences can be utilised. The carrying amount of deferred tax assets is reviewed at the end of each reporting period and reduced to the extent that it is no longer probable that sufficient taxable surplus will be available to allow all or part of the asset to be recovered.

Deferred tax assets and liabilities are measured at the tax rates that are expected to apply in the period in which the liability is settled or the asset realised, based on tax rates (and tax laws) that have been enacted or substantively enacted by the end of the reporting period. Deferred tax liabilities are presented within provisions for liabilities and deferred tax assets within debtors. The measurement of deferred tax liabilities and asset reflects the tax consequences that would follow from the manner in which the Company expects, at the end of the reporting period, to recover or settle the carrying amount of its assets and liabilities.

Current or deferred tax for the year is recognised in surplus or deficit, except when they related to items that are recognised in other comprehensive income or directly in equity, in which case, the current and deferred tax is also recognised in other comprehensive income or directly in equity respectively.

3. Average Number of Employees

Average number of employees, including directors, during the year was: 4 (2024: 4)

Escape Intervention Services Ltd.
Notes to the Financial Statements (continued)
For The Year Ended 28 February 2025

4. Tangible Assets

| | Fixtures & Fittings £ | Computer Equipment £ | Total £ |
|--------------------------------------|--|-------------------------------------|--------------------|
| Cost | | | |
| As at 29 February 2024 | 886 | 28,166 | 29,052 |
| As at 28 February 2025 | 886 | 29,124 | 30,010 |
| Depreciation | | | |
| As at 29 February 2024 | 788 | 22,423 | 23,211 |
| Provided during the period | 25 | 1,456 | 1,481 |
| As at 28 February 2025 | 813 | 23,879 | 24,692 |
| Net Book Value | | | |
| As at 28 February 2025 | 73 | 5,245 | 5,318 |
| As at 29 th February 2024 | 98 | 5,743 | 5,841 |

5. Debtors

| | 2025 £ | 2024 £ |
|----------------------------|-------------------|-------------------|
| Due within one year | | |
| Trade debtors | 100 | - |

6. Creditors: Amounts Falling Due Within One Year

| | 2025 £ | 2024 £ |
|------------------------------|-------------------|-------------------|
| Trade creditors | 3,241 | 3,000 |
| Paye account | 2,454 | 2,497 |
| Pension account | 461 | 457 |
| Accruals and deferred income | 360 | 360 |
| | 6,516 | 6,314 |

7. Company limited by guarantee

The company is limited by guarantee and has no share capital.

Every member of the company undertakes to contribute to the assets of the company, in the event of a winding up, such an amount as may be required not exceeding £1.

Escape Intervention Services Ltd.
Notes to the Financial Statements (continued)
For The Year Ended 28 February 2025

8. Restricted Funds

| <u>Restricted Funds</u> | Balance b/f | Incoming | Outgoing | Balance 29th Feb'25 |
|---|------------------------|-----------------|-----------------|------------------------------------|
| Awards for All | 3,380 | 20,000 | 19,740 | 3,640 |
| National Lottery Community Fund | 53,402 | 56,955 | 89,888 | 20,469 |
| National Lottery Know Your Neighbourhood | 5,941 | 18,739 | 23,945 | 735 |
| Percy Bilton | 481 | - | 481 | - |
| William Leech | 5,000 | 5,000 | 5,000 | 5,000 |
| PCC NE Youth Ltd | 1,244 | - | 1,244 | - |
| Sir James Knott | 1,276 | - | 1,276 | - |
| Magdalen Trust | - | 1,400 | 1,400 | - |
| Sport England | - | 14,998 | 2,200 | 12,798 |
| Hedley Foundation | - | 2,000 | 1,612 | 388 |
| Rotary Club | - | 790 | 790 | - |
| Rothley Trust | - | 800 | 800 | - |
| Totals | 70,724 | 120,682 | 148,376 | 43,030 |