



# FIGHTING DISADVANTAGES FEEDING HOPE...

Mishon  
Annual report and financial statements  
31 March 2021  
Charity Registration number: 1149271



# 2021

## AT A GLANCE:

**10,806**

HOURS OF  
VOLUNTEERING

**45**

DEVOTED  
VOLUNTEERS

**11,213**

FOOD  
PARCELS

HOLIDAY ACTIVITIES

CRISIS GRANTS

RESPITE BREAKS

FURNITURE /CLOTHING

EMOTIONAL THERAPY



**"BEHIND EVERY EFFECTIVE  
ORGANISATION, IS A GREAT  
TEAM OF PEOPLE"**

# NURTURING HOPE FOR A BETTER — FUTURE —



## MESSAGE FROM CHAIRMAN

Dear Colleagues

**2020 was a year that will not be forgotten.**

The covid19 pandemic uniquely affected children and families in different ways by disrupting routines, changing relationships and roles, altering usual childcare, school and recreational activities.

Families faced threats they had not known before through social isolation, financial and employment insecurity, housing instabilities and changes to health and social care access.

Yet, despite the challenges and at times risks involved the team at Mishon rose above it all and reached out to all those desperate for help and support.

So **thank you**—friends, volunteers and donors, we could not have done this without you. Your sheer determination to continue serving the many in need was and remains inspirational.

Looking to the future we need to assess and evaluate the best way forward. We want to put people 'back on their feet' and move away from regular charity daily dependence, bearing in mind the health and safety of our beneficiaries and the due diligence of our charity.

We can and we will emerge from the pandemic stronger than ever before. We must hold on tight and continue to look to the future with hope and aspiration and together we will build a **stronger better normal**.

With best wishes for a brighter future,

Mrs N Wiess

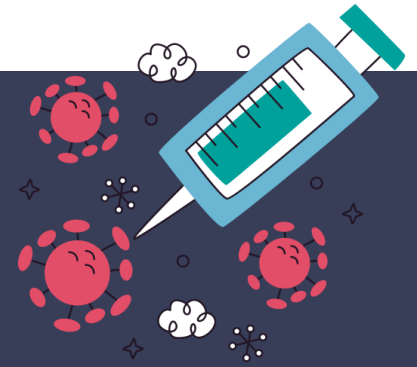
Chair of Mishon

# OUR MISSION

**MAKE A DIFFERENCE**  
TO NEEDY FAMILIES  
BRINGING HOPE



# OUR VISION



DESPITE THE IMPLICATIONS COVID HAS LEFT ON THE ECONOMY, OUR EMOTIONAL AND PHYSICAL HEALTH AND WELLBEING, WE LOOK TOWARDS THE FUTURE WITH HOPE AND ASPIRE TO A BRIGHTER FUTURE OF RECOVERY AND GROWTH. .



# FOOD PARCELS



Covid 19 left many families struggling to make ends meet and the ability to provide basic food staples for their young families. The start of the pandemic and government regulations forced the closure of our food bank, despite this and with an increasing demand of over 80% we were able to reach out and provide food parcels consisting of fresh fruit, veg, fish, meat and grocery supplies to local families. For those who wanted to 'try and piece their lives together' again, we provided food vouchers so they were able to go out and buy food items of their choice even though they did not have the actual funds.

Committed to the health and safety of our volunteers, beneficiaries and all involved, food parcels were packed in line with government guidance with the use of PPE, maintaining social distancing and then delivered with a door to door delivery service thus minimising any social interaction.

# HOLIDAY ACTIVITIES

Families from disadvantaged backgrounds can not afford basic holiday activities, trips or other. Mishon provided a range of holiday activities including:

**Treasure chests:** delivered to those isolating and alone bringing joy and entertainment to their homes.

**Playscheme:**

- \*For small groups of children in line with government guidance.

- \*Subsidising activities in other youth programmes working together with schools and social workers ensuring the most vulnerable children health and safety needs were met.



# CRISIS GRANTS

Sometime an 'emergency item' can make or break a family. Mishon assessed each case and with the trustees' recommendation provided some with furniture, others with clothing whilst some needed emergency emotional therapy to avoid further breakdown.



# HEALTHY MEALS



Those isolating, ill and the elderly were not only struggling with covid 19 symptoms. They faced the daily need for a 'healthy and nutritious meal' to aid recovery. With the help and support of local bakeries, groceries and restaurants, surplus food was collected, packed and delivered to those in need.

# CLOTHING AND HOUSEHOLD HELP

For our beneficiaries a broken fridge is reason for panic. A new one is a dream for 'when I will be rich'. At Mishon, we match up and distribute both new and second hand furniture, clothes and toys ensuring the disadvantaged amongst us have basic household items.



## OUR FUNDERS

בס"ד  
**Jewish Children's Holiday Fund**

Founded 1888 Registered Charity No. 295361



Department  
for Environment  
Food & Rural Affairs

THE ARBIB LUCAS CHARITY



**Haringey**  
LONDON

**East End**  
COMMUNITY FOUNDATION

**CITY  
BRIDGE  
TRUST**



## Board of Trustees

Mrs. Nicha Weiss  
Mr. Isaac Honig  
Mr. Naftoli Chaim Blau

## Auditor

Carl Rosen  
50 Craven Park Road  
South Tottenham  
London N15 6AB

## Charity Office

2 Filey Avenue  
London N16 6NT

## Bankers

TSB  
174 Clapton Common  
London E5 9AQ

Registered charity name: Mishon  
Charity Number: 1149271

## Mishon Report of the Trustees

### Reserves Policy

Free reserves of the charity stand at £21,786 as restricted monies have been received towards the end of the year for particular projects in the following year. This is lower than the anticipated level of reserves the trustees aim to maintain which is generally a level of at least six months running costs. However, in response to the pandemic felt it was sensible to provide support to beneficiaries at such difficult times rather than maintain the expected level of reserves.

### Status and Administration

Mishon is constituted under a trust deed, dated 20th September 2012 and is a Registered Charity with a registered number 1149271. Recruitment and appointment of new trustees would be in line with the Trust Deed and with the consent of the trustees. The criteria set for the suitable candidate would be someone who is sensitive to the needs and demands of the organisation. There is no chief executive officer. The day-to-day affairs are undertaken by a devoted team of individuals on a voluntary basis on behalf of the trustees. All major decisions are taken collectively by the trustees and all the trustees give of their time freely. The trustees are unpaid and details of any related party transactions are disclosed as applicable in the notes to the accounts. The arrangements for setting the pay of the charity's employees is the sole domain of the trustees.

### Public Benefit

The trustees confirm that they have referred to the guidance contained in the Charity Commission's general guidance on public benefit when reviewing the charity's aims and objectives and in planning future activities and setting grant making policy for the year.

### Grant Making Policy

The charity is funded by donations and grants. The charity gives out crisis grants in line with the above objects. The charity paid out a total of £4988 in grants to individuals falling in line with the charity's objects.

### Responsibilities of the Trustees

Charity Law requires the Trustees to prepare financial statements for each financial year which which give a true and fair view of the state of affairs of the charity as at the Balance Sheet date, and of its incoming resources, including income and expenditure for the financial year.

In preparing those financial statements, the Trustees should follow best practice and:

- Select suitable accounting policies and the apply them consistently.
- Make judgements and estimates that are reasonable and prudent.
- Follow applicable accounting standards and the Charities SORP 2015, updated May 2008 disclosing and explaining any departures in the financial statements.
- Prepare the financial statements on the going concern basis unless it is inappropriate to assume that the charity will continue in operation.

The Trustees are responsible for maintaining proper accounting records which disclose with reasonable accuracy at any time the financial position of the charity and to enable them as Trustees to ensure that the financial statements comply with the Charity Law. The Trustees are also responsible for safeguarding the charity's assets and hence for taking reasonable steps for the prevention and detection of fraud and other regularities.

### Board Of Trustees

The members of the Board Of Trustees are set out on Page 1.

Approved by The Trustees of on 9 January 2022  
and signed on behalf of them all.

Trustee  
Mrs. Nicha Weiss

## Mishon

## Statement Of Financial Activities

For The Year Ended 31 March 2021

	Notes	Unrestricted Funds £	Restricted Funds £	2021 Total Funds £	2020 Total Funds £
<b>INCOMING RESOURCES</b>					
Activities to further the Charitable Activities	2	<u>22,922</u>	<u>113,749</u>	<u>136,671</u>	<u>27,921</u>
<b>Total Incoming Resources</b>		<b>22,922</b>	<b>113,749</b>	<b>136,671</b>	<b>27,921</b>
<b>RESOURCES EXPENDED</b>					
Cost of Generating Funds		<u>0</u>	<u>0</u>	<u>0</u>	<u>404</u>
<b>Net Incoming Resources Available For Charitable Application</b>		<b>22,922</b>	<b>113,749</b>	<b>136,671</b>	<b>27,517</b>
Cost of Activities In Furtherance of the Charitable Activities	3	19,035	86,506	105,541	30,711
Governance Costs	5	<u>606</u>	<u>0</u>	<u>606</u>	<u>500</u>
<b>Total Charitable Expenditure</b>		<b>19,641</b>	<b>86,506</b>	<b>106,147</b>	<b>31,211</b>
<b>Total Resources Expended</b>	3	<b><u>19,641</u></b>	<b><u>86,506</u></b>	<b><u>106,147</u></b>	<b><u>31,615</u></b>
<b>Net Movement In Funds</b>		<b>3,281</b>	<b>27,243</b>	<b>30,524</b>	<b>(3,694)</b>
Transfer To / (From) Reserves		<u>0</u>	<u>0</u>	<u>0</u>	<u>0</u>
<b>Net Reserves for the Year</b>		<b><u>3,281</u></b>	<b><u>27,243</u></b>	<b><u>30,524</u></b>	<b><u>(3,694)</u></b>
<b>Total Funds Brought Forward</b>		<b>18,505</b>	<b>0</b>	<b>18,505</b>	<b>22,199</b>
<b>Total Funds Carried Forward</b>	10	<b><u>£ 21,786</u></b>	<b><u>£ 27,243</u></b>	<b><u>£ 49,029</u></b>	<b><u>£ 18,505</u></b>

## Mishon

## Balance Sheet at 31 March 2021

	Notes	2021 £	2020 £
<b>Current Assets</b>			
Cash at Bank and in Hand		<u>49,529</u>	<u>19,005</u>
<b>Creditors</b> : Amounts falling due within one year	8	<u>(500)</u>	<u>(500)</u>
<b>Net Current Assets</b>		<b><u>49,029</u></b>	<b><u>18,505</u></b>
<b>Total Assets less Current Liabilities</b>		<b><u>49,029</u></b>	<b><u>18,505</u></b>
<b>Net Assets</b>	9	<b><u>£ 49,029</u></b>	<b><u>£ 18,505</u></b>
<b>Restricted Funds</b>	10	27,243	0
<b>Unrestricted Funds</b>	11	<u>21,786</u>	<u>18,505</u>
<b>Total Funds</b>		<b><u>£ 49,029</u></b>	<b><u>£ 18,505</u></b>

Approved by the Trustees on 9 January 2022, and signed on behalf of them all.

---

 Mrs. Nicha Weiss  
Trustee

The notes on pages 6 to 8 form part of these accounts.

Mishon

Notes To The Accounts - 31 March 2021

1) Principal Accounting Policies

**Basis of Accounting**

These financial statements have been prepared in compliance with FRS 102, 'The Financial Reporting Standard applicable in the UK and the Republic of Ireland', the Statement of Recommended Practice applicable to charities preparing their accounts in accordance with the Financial Reporting Standard applicable in the UK and Republic of Ireland (FRS 102) (Charities SORP (FRS 102)) and the Charities Act 2011.

**Cash Flow**

The accounts do not include a cash flow statement because the charity as a small reporting entity is exempt from the requirement to prepare such a statement.

**Donations and Fund Accounting**

Donations received for the general and main purposes of the Charity is included as unrestricted funds in the Statement of Financial Activities when receivable.  
Donations and Grants for activities restricted by the donors are taken to restricted funds if the wishes and conditions of the donor are legally binding on the Trustees.

**Resources Expended**

Management and administration costs are those incurred in connection with administration of the charity and compliance with constitutional and statutory requirements.

The irrecoverable element of VAT is included with the item of expense to which it relates.

	Unrestricted Funds £	Restricted Funds £	Total 2021 £	Unrestricted Funds	Restricted Funds	Total 2020 £
<b>2) Incoming Funds</b>						
Donations	19,130	0	19,130	12,645	0	12,645
Fundraising Income	0		0	2,776		2,776
Job Retention Support	<u>3,792</u>	<u>0</u>	<u>3,792</u>	<u>0</u>	<u>0</u>	<u>0</u>
<b>Total Donations and Fees</b>	<b>22,922</b>	<b>0</b>	<b>22,922</b>	<b>15,421</b>	<b>0</b>	<b>15,421</b>
<b>Grants Received</b>						
Arbib Lucas		300	300		0	0
Bruce Wake		0	0		1,500	1,500
City Bridge Trust		25,000	25,000		0	0
Defra Government Grant		30,000	30,000		0	0
East End Community Fund		14,859	14,859		0	0
Edward Gostling		0	0		3,000	3,000
Haringey Giving		5,000	5,000		0	0
Henry Smith		0	0		2,150	2,150
Jewish Child Holiday Fund		3,300	3,300		3,000	3,000
London Borough of Hackney		24,150	24,150		0	0
London Borough of Haringey		1,610	1,610		0	0
National Lottery Response Fund		9,530	9,530		0	0
Respite Association		0	0		2,850	2,850
Tottenham Grant		0	0		0	0
<b>Total Grants</b>	<b>0</b>	<b>113,749</b>	<b>113,749</b>	<b>0</b>	<b>12,500</b>	<b>12,500</b>
<b>Total Income Generated</b>	<b>£ 22,922</b>	<b>£ 113,749</b>	<b>£ 136,671</b>	<b>£ 15,421</b>	<b>£ 12,500</b>	<b>£ 27,921</b>

Mishon

Notes To The Accounts - 31 March 2021

	Unrestricted Funds £	Restricted Funds £	Total 2021 £	Unrestricted Funds £	Restricted Funds £	Total 2020 £
<b>3) Analysis of Total Resources Expended</b>						
<b>Charitable Activities</b>						
Cost of Activities In Furtherance of the Charitable Activities						
Charitable Activities						
Advertising	480	120	600	100	0	100
Entertainment and Trips	0	0	0	1,170	7,575	8,745
Food Parcels	8,663	76,391	85,054	2,732	420	3,152
Grants	3,288	1,700	4,988	1,945	2,555	4,500
Holiday Activities	560	4,850	5,410	0	1,950	1,950
Office Costs	115	0	115	273	0	273
Toys and Stationery	74	1,008	1,082	3,462	1,035	4,497
Volunteer Costs	60	42	102	690	0	690
Staff Costs	<u>5,795</u>	<u>2,395</u>	<u>8,190</u>	<u>6,804</u>	<u>0</u>	<u>6,804</u>
<b>Total Charitable Activities</b>	<b>19,035</b>	<b>86,506</b>	<b>105,541</b>	<b>17,176</b>	<b>13,535</b>	<b>30,711</b>
<b>Total Cost of Activities In Furtherance of the Charitable Activities</b>	<b>£ 19,035</b>	<b>£ 86,506</b>	<b>£ 105,541</b>			<b>£ 30,711</b>
Staff Costs include Payments from the Furlough Job Retention Scheme.						

**4) Cost of Generating Funds** **£ 0** **£ 404**

<b>5) Governance Costs</b>			
Accountancy	606		500
Bank Charges	0		0
Governance	0		0
	<b>£ 606</b>		<b>£ 500</b>

<b>6) Taxation</b>			
The Charity is exempt from taxation on its charitable activities.			
<b>7) The average number of Employees during the year, on a full time equivalent basis was</b>		2021 <u>2</u>	2020 <u>1</u>
No Employee was paid above £60,000 per year.			

**8) Related Party Transactions**  
No trustee nor any person connected with them received any remuneration, or claimed any expense, during the year, from this or any related Charity.  
There were no Related Party Transactions in the Year.

**Mishon**  
**Notes To The Accounts - 31 March 2021**

**8) Creditors: Amounts falling due within one year**

	2021 £	2020 £
Accruals	500	500
	<u>£ 500</u>	<u>£ 500</u>

**9) Net Assets of The Charity's Funds**

	Fixed Assets £	Net Current Assets £	Long Term Liabilities £	Fund Balances £
Restricted Funds	0	27,243	0	27,243
Unrestricted Funds	0	21,786	0	21,786
<b>Total Funds</b>	<b>£ 0</b>	<b>£ 49,029</b>	<b>£ 0</b>	<b>£ 49,029</b>

**10) Restricted Funds : Movements In The Year**

	Balance at 31 March 2020 £	Income £	Expended £	Transfer To /(From) Reserves	Balance at 31 March 2021 £
	0	113,749	86,506	0	27,243
<b>Total Funds</b>	<b>£ 0</b>	<b>£ 113,749</b>	<b>£ 86,506</b>	<b>£ 0</b>	<b>£ 27,243</b>

**11) Unrestricted Funds : Movements In The Year**

	Balance at 31 March 2020 £	Income £	Expended £	Transfer To /(From) Reserves	Balance at 31 March 2021 £
General Reserve	18,505	22,922	19,641	0	21,786
<b>Total Funds</b>	<b>£ 18,505</b>	<b>£ 22,922</b>	<b>£ 19,641</b>	<b>£ 0</b>	<b>£ 21,786</b>

**12) Related Party Transactions**

No trustee nor any person connected with them received any remuneration, or claimed any expense, during the year, from this or any related Charity.  
There were no Related Party Transactions in the Year.

**Accountants Report to the Trustees on the Unaudited Accounts of the Charity**  
**Mishon**  
**For The Year Ended 31 March 2021**

We report on the financial statements of Mishon for the year ended 31 March 2021 which comprise the Statement of Financial Activities, the Balance Sheet and the related notes. These financial statements have been prepared, under the historical cost convention, and in accordance with the recommendations in Accounting and Reporting By Charities: Statement of Recommended Practice (Issued 2015), and the Financial Reporting Standard for Smaller Entities 102 (effective 2016), and the accounting policies set out therein.

**Respective Responsibilities Of Trustees and Reporting Accountants**

As described on page 3, the trustees of the charity are responsible for the preparation of the accounts, and they consider that the audit requirement of section 144 of the Charities Act 2011 (the Act) does not apply. It is our responsibility to state, on the basis of procedures specified in the General Directions given by the Charity Commissioners under section 249 of the Act, whether particular matters have come to our attention.

**Basis of Accountant's Report**

Our examination was carried out in accordance with the General Directions given by the Charity Commissioners.

An examination includes a review of the accounting records kept by the charity and a comparison of the accounts presented with those records. It also includes consideration of any unusual items or disclosures in the accounts, and seeking explanations from you as trustees concerning any such matters.

These procedures provide only the assurance expressed in our opinion.

The procedures undertaken do not provide all the evidence that would be required in an audit, and consequently we do not express an audit opinion on the view given by the accounts.

**Opinion**

In our opinion, no matter has come to our attention,

- 1) which gives us reasonable cause to believe that, in any material respect, the requirements
  - a) to keep accounting records in accordance with section 130 of the Act; and
  - b) to prepare accounts which accord with the accounting records and to comply with the accounting requirements of the 2011 Act have not been met; or
- 2) to which, in our opinion, attention should be drawn in order to enable a proper understanding of the accounts to be reached.

Date 9 January 2022

**Reporting Accountant**

C. Rosen

[illegible][illegible][illegible][illegible]