

MISHON

England & Wales - Charity number 1149271

Details

Status Registered

Legal form Trust

Registered 2012-10-10

Register [View on the Charity Commission register](#)

Contact

Address 2 Filey Avenue
London
N16 6NT

Phone 02088062009

Email mishon1@hotmail.co.uk

Activities

Objects: 1. TO PROMOTE AND PROTECT THE PHYSICAL AND MENTAL HEALTH OF FAMILIES WHO ARE IN NEED BECAUSE OF THEIR SOCIAL OR ECONOMIC CIRCUMSTANCES THROUGH THE PROVISION OF FINANCIAL ASSISTANCE, SUPPORT, THERAPEUTIC ACTIVITIES AND/OR PRACTICAL ADVICE. 2. THE PROMOTION OF ANY OTHER EXCLUSIVELY CHARITABLE OBJECTS AND PURPOSES AS THE TRUSTEES SEE FIT, PROVIDED THAT THEY ARE REGARDED AS CHARITABLE BY THE LAW OF ENGLAND AND WALES.

Activities: To promote and protect the physical and mental health of families who are in need because of their social or economic circumstances through the provision of financial assistance, support, therapeutic activities and/or practical advice.

Classification

- **How:** Makes Grants To Individuals, Provides Human Resources, Provides Services, Provides Advocacy/advice/information
- **What:** General Charitable Purposes, Education/training, The Advancement Of Health Or Saving Of Lives, Disability, The Prevention Or Relief Of Poverty, Arts/culture/heritage/science, Amateur Sport, Recreation
- **Who:** Children/young People, People With Disabilities

Geography

- Barnet
- Hackney
- Haringey

Finances

Period end	Income	Expenditure	Assets	Employees
2025-03-31	£255,046	£251,853	-	-
2024-03-31	£250,778	£261,338	-	-
2023-03-31	£193,166	£133,684	-	-
2022-03-31	£169,430	£169,173	-	-
2021-03-31	£136,671	£106,147	-	-

Trustees

Name	Role	Appointed
ISAAC HONIG		2012-07-10
NAFTOLI CHAIM BLAU		2012-07-10
NICHA WEISS		2012-07-10

MISHON

England & Wales - Charity number 1149271

Accounts

LEGO

OF THE PAST : TOGETHER WE
BUILD A HOPEFUL FUTURE

mishon
A mission to build families.

Mishon annual report and financial statement 31st March 2025



Charity Information



TRUSTEES:

Mrs Nicha Weiss
Mr Isaac Honig
Mr Naftoli Chaim Blau

INDEPENDENT EXAMINER:

DECLARON LTD UNIT A
3 THE VALE
LONDON NW11 8SB

BANKERS:

TSB 174 CLAPTON COMMON
LONDON
E5 9AQ

REGISTERED CHARITY

NUMBER:

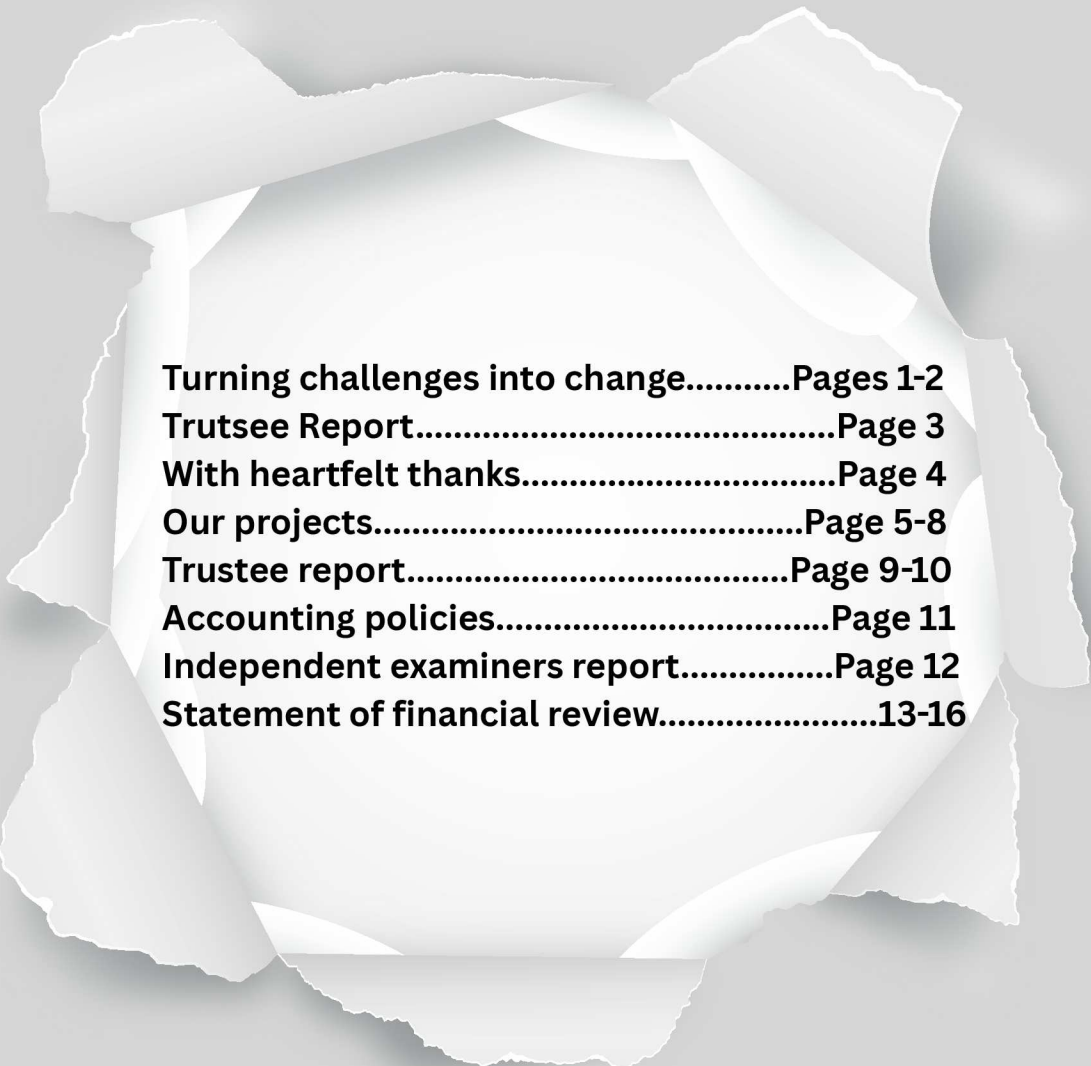
1149271

CHARITY OFFICE:

2 FILEY AVENUE N16 6NT

INFO@MISHONSUPPORT.CO.UK
[HTTPS://MISHONSUPPORT.CO.UK](https://MISHONSUPPORT.CO.UK)

Table of contents



- Turning challenges into change.....Pages 1-2
- Trutsee Report.....Page 3
- With heartfelt thanks.....Page 4
- Our projects.....Page 5-8
- Trustee report.....Page 9-10
- Accounting policies.....Page 11
- Independent examiners report.....Page 12
- Statement of financial review.....13-16

Turning challenges into change

"Happiness doesn't result from what we get, but from what we give." – Ben Carson

RACHEL REPORTS:

On February 24th 2012, a 16-year-old boy from the neighborhood—whom I recognized as Steve stood outside my house. Without any preamble, he simply asked, "Can I come in for a few minutes?" I welcomed him inside, prepared him something to eat, and observed as he consumed every bite as if he had not had a proper meal in days. Only once his immediate hunger was satisfied did he begin to share his story, albeit in small, hesitant fragments.

He explained his home situation: with divorced parents he along with his younger siblings, who reside with their mother face daily challenges. Days when there is no electricity, days when there is little food and days when the children, despite their pride, must knock on neighbours' doors to request assistance. Steve did not recount this with dramatization; he presented it as an ordinary part of life—a boy who has learned that help will not come, and so he simply continues to survive.

That night, I found it impossible to sleep. I kept visualizing him at my table, eating quickly, hoping for more.

That experience marked the inception of Mishon. Having witnessed firsthand the profound struggles faced by Steve and countless others like him, Mrs. Chippy Flohr and Mrs. Rachel Frenkel felt a compelling duty to intervene. Motivated by compassion, understanding, and a commitment to preserving dignity, they resolved to develop a means of providing meaningful support and stability to those in need.

Mishon is a London-based, non-profit organization dedicated to offering practical, financial, and emotional assistance to individuals facing crises resulting from unemployment, illness, or other financial hardships.

Our Mission

We aim to address the emotional, practical and physical needs of the vulnerable and disadvantaged through offering a holistic, compassionate and comprehensive approach in our support so that we may empower them to break free from hardship and build a sustainable, hopeful future.

Our Vision

We envision a future where no family is left behind, and all individuals have access to the emotional, practical, and physical resources they need to build a brighter, more secure life.

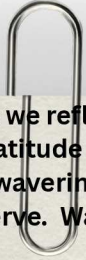
A world where every individual is empowered to overcome hardship, achieve independence, and thrive in a supportive, compassionate community

Our Values

- **Compassion:** We approach every person with kindness, understanding, and a caring heart, recognizing the dignity in everyone we serve.
- **Empowerment:** We believe in uplifting individuals and communities, helping them to build stronger, self-sufficient futures.
- **Hope:** We foster a positive outlook, inspiring hope and resilience in those facing hardship.
- **Integrity:** We act with honesty, transparency, and respect in everything we do, earning trust and building genuine relationships.
- **Collaboration:** We work hand-in-hand with communities, partners, and volunteers, believing that together, we can create lasting change.
- **Inclusivity:** We embrace diversity and ensure our services and actions are welcoming and accessible to all.



Trustees Report



As we reflect on this past year, we are overwhelmed with a profound sense of gratitude and hope. It has been a year marked by resilience, compassion, and unwavering dedication—both from our team and the incredible community we serve. Watching lives transform, seeing children smile again, and witnessing families find moments of relief has touched me deeply.

Throughout the year, our charity has been at the forefront of making a real difference in the lives of those who need it most. We have dedicated ourselves wholeheartedly to delivering a diverse range of programs and services, each thoughtfully designed to address the unique and pressing needs of the communities we serve. From alleviating hardship to promoting holistic well-being, our efforts have been driven by a deep commitment to create opportunities and spark hope for disadvantaged children and families.

At the heart of our mission is a simple yet powerful belief: **"Every Meal Matters."** But for us, a meal is more than just nourishment—it's a symbol of care, connection, and community. Whether it's a warm meal that restores strength or a moment of social interaction that lifts spirits, each act reinforces our conviction that no one should face hardship alone. Through this lens, we have worked tirelessly to reach out to those facing adversity, ensuring they know they are valued and supported.

The incredible progress we've achieved this year would not have been possible without the unwavering support of our funders, sponsors, and volunteers. Their generosity and dedication have allowed us to expand our reach and deepen our impact. Together, we have been able to provide not just food and supplies, but also hope, dignity, and a sense of belonging to countless individuals who need it most. Every donation, every volunteer hour, and every act of kindness has helped uphold the vital principle that every meal, every act of kindness, truly matters.

Mrs. Ancha Weiss *Mr. Massimo Blau*
A Weiss *M Blau*

With heartfelt thanks

Mayor of
London

Haringey
Council

Carmella and
Ronnie
Pignatelli
foundation

Big lottery

Arnold
Clarke

London
Hackney
Council

Respite
association

Arbib
Lucas

Sport England

BBC Crisis grant

**Alone we can do so little;
together we can do so much.**

We would like to thank our volunteers for their time, commitment and generosity, which are central to the delivery of our services and the impact we achieve. It is their dedication which keeps our mission moving forward, and we couldn't do it without their unwavering commitment.



Our projects

EAT WELL/ LIVE WELL

With a focus on Every Meal Matters children and young people were supported through a new weekend initiative, ensuring individuals had access to nutritious meals over weekends when they need them most, helping to relieve hunger, reduce stress and support physical and emotional wellbeing. By providing consistent, thoughtful food support, we reinforced the message that no one should go without and that each meal is an opportunity to offer care, stability, and hope.

Shifting support from simply providing food to supporting dignity, autonomy, and wellbeing, our food voucher scheme helped people feel valued rather than dependent. The project delivered compassionate, responsive food support to vulnerable individuals and families experiencing food insecurity or financial hardship whilst supporting better nutrition. The food voucher schemes enabled residents to make their own food choices, thus reducing food waste at the same time.

Freshly prepared cooked meals and ready food boxes for those unable to cook or shop for themselves ensured support is flexible respectful and tailored. Beyond meeting physical needs, the food boxes reduce stress and anxiety associated with hunger, ease financial pressure, and provide a sense of care and support. By meeting people at their point of need this support prevents crisis, promotes wellbeing, and creates a foundation from which individuals can begin to regain stability and confidence.

Together we are ensuring no child goes hungry, one meal at a time.

Our projects

Footprints of care

Mishon is rooted in compassion and kindness, dedicated to walking alongside those in need. Through our efforts, we've provided countless individuals with the simple comfort of new shoes and clothing, helping them feel valued, cared for, and ready to embrace each new day. We work with generosity and care, sourcing clothing from end-of-season sales and giving it to those in need free of charge as well as sourcing shoe vouchers so individuals can make their own choices. Every pair of shoes and piece of clothing we share represents a step toward hope, dignity, and a brighter future for the families and communities we serve.

Together, we're making a difference – one step at a time.

Comfort & dignity

Mishon is committed to ensuring that no one has to face daily challenges alone. Through our home essentials project, we provided vital items like toilet paper, soaps, and sanitary pads to those in need, helping them maintain dignity, comfort, and good health. These simple essentials are often out of reach for many, yet they are fundamental to everyday wellbeing. By sharing these necessities, we aim to ease their struggles, promote hygiene, and remind every individual that they are valued and cared for.

Together, we're helping build healthier, more dignified lives—one essential at a time.

Warmth & Wellbeing

The overwhelming choice of 'heating or eating' for the elderly and vulnerable was addressed through our fuel vouchers distribution. With rising energy costs creating extra worry, the vouchers offered practical help and peace of mind, allowing people to heat their homes without fear of falling behind on bills. Above all, the project was about offering kindness, reassurance, and support, ensuring that no one felt alone or left in the cold.

Together warming the vulnerable - one heart at a time



Our projects

Money skills



Focusing on helping people make their income stretch further, manage essential household costs, and plan for unexpected expenses, budgeting workshops help individuals feel more confident, informed, and in control of their finances, supporting improved wellbeing and long-term financial stability.

One-to-one budgeting workshops, ensure each participant receives personalised attention and advice tailored to their individual circumstances.

*Together we are empowering individuals
- one person at a time.*

Critical Support

Our crises grants are tailored to meet the unique needs of the individual, ensuring that support is both timely and effective.

With a compassionate Crisis Grant program immediate financial support was given to individuals and families facing urgent hardships.

When unexpected events such as job loss, illness, or other emergencies threaten their stability, we step in with grants that help cover essential needs like utilities, food, medical expenses and for some it may be the need for a holiday, helping them regain their footing and restore hope.

*Together we are reducing hardship,
preventing homelessness
- one Pound at a time*

Splash of opportunities

Our vibrant active living club empowers disadvantaged children & young people through sport. These after-school swim activities help young people facing barriers build confidence, develop essential life skills and unlock potential. By offering a safe and supportive environment, we encourage our young participants to stay engaged with active lifestyles well beyond grasping the skill of swimming.

Together we are building confidence, one splash at a time."

Our projects

Brighter futures

Holiday clubs during school holiday periods provided a safe, inclusive, and engaging environment where young people took part in a wide range of enrichment activities designed to support their social, emotional, and physical wellbeing. Throughout programmes, participants had access to creative workshops, team based activities, and structured sports sessions encouraging confidence, collaboration, and positive relationships. Alongside these opportunities, young people benefitted from healthy, nutritious meals and snacks, ensuring they stayed well nourished and energised.

By combining enrichment, routine, and support, young people feel valued, capable, and optimistic about their future.



Future



Playing a crucial role in strengthening mental health and resilience among vulnerable people we work with; the charity looks towards the future with an aim of introducing accessible, preventative and strength based projects.

*You must let go of who you are
to become who you will
be.*



TRUSTEE REPORT FOR YEAR ENDING MARCH 2025

OBJECTIVES AND AIMS

The Aims of the Charity are as follows

- 1) To promote and protect the physical and mental health of families who are in need because of their social or economic circumstances through the provision of financial assistance, support, therapeutic activities and/or practical advice.
- 2) The promotion of any other exclusively charitable objects and purposes as the trustees see fit, provided that they are regarded as charitable by the law of England and Wales.

Public benefit

The trustees confirm that they have referred to the guidance contained in the Charity Commissions general guidance on public benefit when reviewing the charity's aims and objectives and in planning future activities and setting grant making policy for the year

FINANCIAL REVIEW

Grant making policy

The charity is funded by donations and grants. The charity gives out grants in line with the above objects. The charity paid out a total of £9,310.35 in grants to individuals comprising of holiday grants as well as grants falling in line with the charity's objects.

Reserves Policy

The Trustees aim to maintain unrestricted funds, which are the free reserves of the Charity at a level of at least three to six months running costs and up to one year's running costs. The Trustees are pleased to have achieved a level of reserves for the Charity this past year, in accordance with their aim.

STRUCTURE GOVERNANCE AND MANAGEMENT

Charity constitution

Mishon is constituted under a trust deed, dated 20th September 2012 and is a Registered Charity with a registered number 1149271.

Recruitment and appointment of new trustees would be in line with the Trust Deed and with the consent of the trustees.

The criteria set for the suitable candidate would be someone who is sensitive to the needs and demands of the organisation.

There is no chief executive officer. The day to day affairs are undertaken by a devoted team of individuals on a voluntary basis on behalf of the trustees.

All major decisions are taken collectively by the trustees and all the trustees give of their time freely. The trustees are unpaid and details of any related party transactions are disclosed as applicable in the notes to the accounts. The arrangements for setting the pay of the charity's employees is the sole domain of the trustees

TRUSTEE REPORT FOR YEAR ENDING MARCH 2025

Responsibilities of the Trustees

Charity Law requires the Trustees to prepare financial statements for each financial year which give a true and fair view of the state of affairs of the charity as at the Balance Sheet date, and of its incoming resources, including income and expenditure for the financial year. In preparing those financial statements, the Trustees should follow best practice and:

- a) Select suitable accounting policies and apply them consistently.
- b) Make judgements and estimates that are reasonable and prudent.
- c) Follow applicable accounting standards and the Charities SORP 2015, updated May 2008 disclosing and explaining any departures in the financial statements.
- d) Prepare the financial statements on the going concern basis unless it is inappropriate to assume that the charity will continue in operation.

The Trustees are responsible for maintaining proper accounting records which disclose with reasonable accuracy at any time the financial position of the charity and to enable them as Trustees to ensure that the financial statements comply with the Charity Law. The Trustees are also responsible for safeguarding the charity's assets and hence for taking reasonable steps for the prevention and detection of fraud and other regularities.

Risk management' The trustees have assessed the major risks to which the charity is exposed, in particular those related to the operations and finances of the charity, and are satisfied that systems are in place to mitigate their exposure to major risks.

Risk management'

The trustees have assessed the major risks to which the charity is exposed, in particular those related to the operations and finances of the charity, and are satisfied that systems are in place to mitigate their exposure to major risks.

Auditor

An independent examiners unqualified report will be prepared by De Claron Ltd Approved by The Trustees and signed on behalf of them all.

31/12/2025

TRUSTEE

MRS NICHIA WEISS



Accounting Policies

Basic of accounting

The accounts have been prepared under the historical cost convention in accordance with the Charities Act (Accounts and Reports) 2011, and the Financial Reporting Standard for Smaller Entities 102, and follow the recommendations in Accounting and Reporting By Charities: Statement of Recommended Practice (effective from April 2015)

Income

Donations received for the general and main purpose of the Charity is included as unrestricted funds in the statement of Financial Activities when receivable. Donations and Grants for activities restricted by the donors are taken to restricted funds if the wishes and conditions of the donor are legally binding on the trustees

Expenditure

Resources expended are accounted for on an accrual basis. Certain expenditure is appointed to cost categories based on the estimated amount attributable to that activity in the year. These estimates are based on the time and level of activity as appropriate. Governance costs are those incurred in connection with administration of the charity and compliance with constitutional and statutory requirements. The irrecoverable element of VAT is included with the item of expense to which it relates

Independent Examiner's unqualified report

Independent Examiner's Report to the Trustees of Mishon I report on the accounts of the Charity for the year ended 31 March 2025, which are set out on pages 5 to 7.

Respective responsibilities of trustees and examiner

The charity's trustees are responsible for the preparation of the accounts. The charity's trustees consider that an audit is not required for this year under the Charities Act 2022 (the 2022 Act)) and that an independent examination is needed. It is my responsibility to

- examine the accounts (under the 2022 Act);
- to follow the procedures laid down in the General Directions given by the Charity Commissioners (under the 2022 Act); and
- to state whether particular matters have come to my attention.

Basis of independent examiner's report

My examination was carried out in accordance with the General Directions given by the Charity Commissioners. An examination includes a review of the accounting records kept by the charity and a comparison of the accounts presented with those records. It also includes consideration of any unusual items or disclosures in the accounts, and seeking explanations from you as trustees concerning any such matters. The procedures undertaken do not provide all the evidence that would be required in an audit, and consequently I do not express an audit opinion on the view given by the accounts.

Independent examiner's statement

In connection with my examination, no matter has come to my attention:

(1) which gives me reasonable cause to believe that in any material respect the requirements

- to keep accounting records in accordance with the 2022 Act; and
- to prepare accounts which accord with the accounting records and comply with the accounting requirements of the 2022 Act have not been met; or

(2) to which, in my opinion, attention should be drawn in order to enable a proper understanding of the accounts to be reached.

De Claron Ltd.

3a The Vale

LONDON NW11 8SB:

31 December 2025



Statement of financial review

	y/e 31.03.2025			y/e 31.03.2024		
	£	£	£	£	£	£
	Unrestricted Funds	Restricted Funds	Total Funds	Unrestricted Funds	Restricted Funds	Total Funds
INCOMING RESOURCES						
Donations Received						
Donations	28,621.11		28,621.11	32,847.49		32,847.49
Grants Received		226,424.45	226,424.45		217,930.50	217,930.50
	<u>28,621.11</u>	<u>226,424.45</u>	<u>255,045.56</u>	<u>32,847.49</u>	<u>217,930.50</u>	<u>250,777.99</u>
Activities to further the Charitable Activities			-			-
Total Incoming Resources	28,621.11	226,424.45	255,045.56	32,847.49	217,930.50	250,777.99
RESOURCES EXPENDED						
Cost of Generating Funds	4,840.00		4,840.00	3,921.00		3,921.00
Net Incoming Resources Available For Charitable Application	23,781.11	226,424.45	250,205.56	28,926.49	217,930.50	246,856.99
Cost of Activities in Furtherance or the Charitable Activities						
Food Parcels and Vouchers	13,544.07	138,487.29	152,031.36		182,844.35	182,844.35
Crisis Grants	6,123.37	3,186.98	9,310.35	2,417.04	9,931.84	12,348.88
Holiday Activities / Trips		40,733.26	40,733.26		21,238.00	21,238.00
Instructors		4,831.25	4,831.25		4,918.75	4,918.75
Staff Costs	7,690.00	22,652.28	30,342.28	5,879.25	16,310.00	22,189.25
Toys	3,830.00		3,830.00	4,842.00		4,842.00
Home Essentials	545.91		545.91	822.40		822.40
Venue Hire		6,792.50	6,792.50		4,315.00	4,315.00
Volunteer Costs	187.40		187.40		953.50	953.50
	<u>31,920.75</u>	<u>216,683.56</u>	<u>248,604.31</u>	<u>13,960.69</u>	<u>239,811.44</u>	<u>253,772.13</u>
ADMINISTRATIVE EXPENSES						
Governance Costs			-	67.96		67.96
IT Exp	-		-		1,550.00	1,550.00
Telephone	-		-	85.63	105.05	190.68
Advertising	-		-	355.00		355.00
Professional Fee & Acc	1,131.40		1,131.40	677.56		609.60
Insurance	291.76		291.76	214.48		214.48
Stationery & Office Supply	1,760.44		1,760.44	97.26	560.00	657.26



Statement of financial review

	y/e 31.03.2025			y/e 31.03.2024		
	£	£	£	£	£	£
	Unrestricted Funds	Restricted Funds	Total Funds	Unrestricted Funds	Restricted Funds	Total Funds
	3,183.60	-	3,183.60	1,429.93	2,215.05	3,644.98
Total Charitable Expenditure	31,920.75	216,683.56	248,604.31	13,960.69	239,811.44	253,772.13
Total Resources Expended	35,104.35	216,683.56	251,787.91	15,390.62	242,026.49	257,417.11
Net Movement in Funds	(11,323.24)	9,740.89	(1,582.35)	13,535.87	(24,095.99)	(10,560.12)
Transfer To / (From) Reserves			-			-
Net Reserves for the Year	(11,323.24)	9,740.89	(1,582.35)	13,535.87	(24,095.99)	(10,560.12)
Total Funds Brought Forward	79,723.13	15,564.01	95,287.14	66,187.26	39,660.00	105,847.26
Total Funds Carried Forward	68,399.89	25,304.90	93,704.79	79,723.13	15,564.01	95,287.14

Draft Balance Sheet

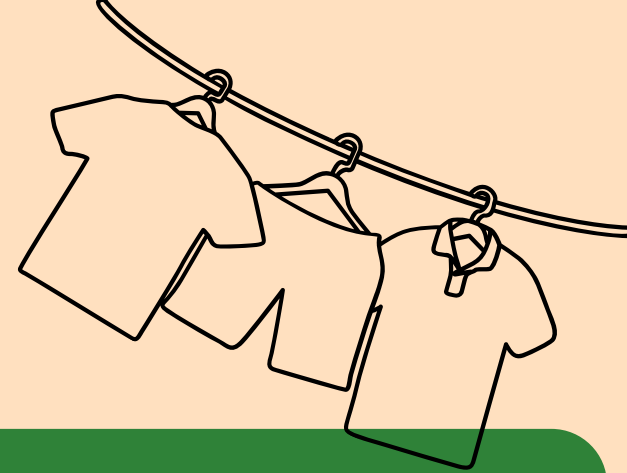
	y/e 31.03.2025		y/e 31.03.2024	
	£	£	£	£
CURRENT ASSETS				
CASH IN HAND & BANK	93,704.79		95,287.14	
		93,704.79		95,287.14
CURRENT LIABILITIES				
CREDITORS: Accruals			-	
NET ASSETS		93,704.79		95,287.14
FUND ACCOUNT				
Restricted Funds		25,304.90		15,564.01
Unrestricted Funds		68,399.89		79,723.13
Total Funds		93,704.79		95,287.14



MISHON

England & Wales - Charity number 1149271

Accounts



EMPOWERING TODAY FOR A BETTER TOMORROW

MISHON ANNUAL REPORT AND FINANCIAL STATEMENTS
31 MARCH 2024

“COMPASSION

IS DOING SOMETHING TO ALLEVIATE
THE SUFFERING OF ANOTHER.”



AFTER WITNESSING COUNTLESS FAMILIES STRUGGLING DESPERATELY TO STAY AFLOAT, MRS. CHIPPY FLOHR AND MRS. RACHEL FRENKEL FELT COMPELLED TO DO SOMETHING ABOUT THE PAINFUL SITUATION. THEY RESOLVED TO FIND A WAY TO PROVIDE SUPPORT AND STABILITY FOR FAMILIES –WITH COMPASSION, UNDERSTANDING, AND DIGNITY.

THAT’S WHEN MISHON WAS BORN. MISHON IS A LONDON-BASED, NON-PROFIT ORGANIZATION THAT PROVIDES PRACTICAL, FINANCIAL AND EMOTIONAL SUPPORT TO THOSE FACING CRISES DUE TO LOSS OF EMPLOYMENT, ILLNESS OR OTHER FINANCIAL PREDICAMENTS.

MISHON HELPS BUILD BACKBONE—THE ABILITY AND CONFIDENCE TO PUSH FORWARD—ENABLING FAMILIES TO RAISE THEMSELVES TOWARD FINANCIAL STABILITY AND SELF-SUFFICIENCY.

MISHON

TRUSTEES:

MRS NICHA WEISS
MR ISAAC HONIG
MR NAFTOLI CHAIM BLAU

INDEPENDENT EXAMINER:

DECLARON LTD
UNIT A
3 THE VALE
LONDON
NW11 8SB

BANKERS:

TSB
174 CLAPTON COMMON
LONDON
E5 9AQ

REGISTERED CHARITY NUMBER:

1149271

CHARITY OFFICE:

2 FILEY AVENUE N16 6NT
INFO@MISHONSUPPORT.CO.UK
HTTPS://MISHONSUPPORT.CO.UK/

A MESSAGE FROM THE BOARD



This year, we embarked on a profound journey, unwavering in our commitment to champion community-led solutions while facing an unprecedented rise in hunger, disadvantage, and urgent needs born from relentless inflation and surging food prices.

In a world rapidly evolving and often uncertain, our charity has been inundated with heartfelt pleas for assistance. Individuals grappling with sudden job losses, unforeseen illnesses, and crushingly unexpected expenses find themselves at the brink, navigating emotional turmoil that can fracture families and shatter dreams.

Yet, amid this tempest of challenges, we made an unwavering promise: we will not turn our backs on them. We stand resolute, hand in hand with our community, defying despair with compassion and unwavering support.

With the invaluable support of kind-hearted individuals, generous philanthropic trusts, and local authorities—including: **Hackney Council - Haringey Council - Arbib Lucas Charitable Trust - JAPH - Hackney Giving - BBC Children in need - Mayor of London - Bruce Wake - Caring Family Foundation - Duchy of Lancaster - The Respite Association - Clevedon Forbes** we have been able to illuminate the darkness enveloping so many lives.

Your steadfast belief in our mission has empowered us to respond dynamically to the burgeoning needs around us. It is through the selfless dedication and extraordinary innovation of our volunteers and partners that we have reached this pivotal moment. Together, we have empowered those who confront daily struggles to not merely endure but to thrive, igniting a spark of hope in the unlikely of circumstances.

We are incredibly grateful for the Hackney Council's Infrastructure Grant, which has been instrumental in allowing us to recruit a dedicated Development Manager/Fundraiser. This vital addition to our team empowers us to enhance our partnership work with existing funders and forge new alliances, expanding our outreach to even more individuals in need. This investment not only strengthens our infrastructure but also amplifies our impact, enabling us to connect with a diverse range of clients and ensure that the vital resources and support they require are accessible. Together, with this newfound capacity, we are not just confronting challenges; we are building a robust community network that stands ready to uplift and empower every voice in need.

In our relentless pursuit of alleviating hardship and fostering resilience, we have set forth on a path of innovation. We are pioneering transformative programs designed to not only bridge immediate gaps but to build a sturdy foundation for brighter futures—futures where families can flourish and communities can thrive. Our joint efforts resonate with the understanding that together, we can weather any storm, cultivating strength and tenacity in the face of adversity.

As we reflect on our journey together, we are deeply grateful for your unwavering dedication to our mission and your passionate empathy for those we are honoured to serve. Together, we are not just advocates; we are beacons of hope, united in our resolve to create a more just and compassionate world.

With heartfelt appreciation and warmest regards,

OUR MISSION

At the heart of our organization lies a passionate commitment to empower those who face barriers and adversity, opening the door to essential resources and abundant opportunities for personal growth.

We believe that by fostering self-sufficiency, we can help individuals build unwavering foundations for a brighter, more hopeful future.

OUR VALUES

Compassion - We wholeheartedly embrace the intrinsic worth and dignity of every individual. Our deep well of empathy drives us to act with kindness, respect, and fairness, ensuring that everyone can feel seen and valued, especially in times of need.

Empowerment - We are advocates for transformation, dedicated to empowering individuals to lead independent and fulfilling lives. Through unwavering support and encouragement, we light the path toward self-sufficiency and personal growth, enabling everyone to unlock their true potential.

Hope and Empathy - We believe fervently in the transformative power of hope and the incredible capacity for positive change. We strive to inspire hope in every individual we touch, nurturing resilience and providing the vital support necessary to overcome adversity.

We approach every challenge with understanding and empathy, recognizing the unique journeys each person undertakes. Together, we create a community anchored in hope, compassion, and the promise of a brighter tomorrow.

**"VOLUNTEERS WITH VISION:
INSPIRING CHANGE, SPARKING HOPE!"**

your time, your impact - thank you for making a difference

Our organization leads a range of impactful programs designed to uplift and empower our community, but the true magic happens through the invaluable contributions and insights of our dedicated volunteers. They are the lifeblood of our initiatives, helping us to tailor our efforts so they resonate deeply with the needs of the people we serve. For instance, we may have a structured food drive program that aims to alleviate hunger, but it's our volunteers, who actively participate and share their experiences that help us understand the unique challenges faced by families in our community. Their feedback allows us to adjust our approach, ensuring we not only provide food but also create a welcoming atmosphere where individuals feel valued and supported. Among our extraordinary volunteers is Peri, our youngest member, who has shattered expectations by raising an astounding £15,000 this year for our organization. Her passion for our mission is infectious, and her tireless efforts in fundraising demonstrate not just her commitment but also her belief in the potential of every child we serve. Peri inspires us all, proving that age is no barrier to making a significant impact, and her dedication is a shining example of how one individual can truly change lives.

**"TOGETHER WE THRIVE;
YOUR SUPPORT FUELS
OUR MISSION!"**



2024 & BEYOND

We are committed to pursuing greater impact and expanding our efforts to support those in need in the future.

WE WILL continue to engage with the community and stakeholders in a transparent way

WE WILL seek partnerships with other organisations to broaden the scope of what we can achieve

WE WILL develop a strategic plan to outline how we intend to expand services

WE WILL actively involve supporters, volunteers and beneficiaries in brainstorming sessions for future initiatives

WE WILL establish a preventative approach in services we offer



"NOURISH THEIR FUTURE END HUNGER WITH LOVE"

Hunger can affect people from all walks of life. But hunger doesn't affect everyone equally - some groups like children and seniors are at much higher rate effecting health, development and wellbeing.

The charity provided nourishment and support through

* Access to essential and nutritious cooked meals for individuals and families, supporting 260 families with brunch food boxes over the holiday period as well as warm lunches for youth throughout all holiday schemes

* Voucher scheme - providing beneficiaries including the elderly with the opportunity to choose and purchase their own food, allowing them to maintain their dignity and autonomy

* Senior food hamper boxes delivered to pensioners.

* Throughout the year, we have provided thousands of warm, and nutritious meals to children and families, each plate filled with care and devotion. These meals not only brighten their days with delicious flavours, but they also nourish their bodies and spirits, empowering them to learn, grow, and thrive.

Through our partnership with the Felix Project, as well as the support from our volunteers, we were also able to rescue good food, fruits and vegetables from local wholesalers, restaurants and other from going to waste and distribute to local families in need making healthier food the easier choice for struggling families

With every parcel we deliver and every family we uplift, we affirm our commitment to ensuring that no person should have to face hunger alone, transforming lives and restoring hope one meal at a time.



"EMPOWERING FUTURES THROUGH SWIM: TRANSFORMING LIVES ONE STROKE AT A TIME!"

Over the past year, our vibrant swim programs at Mishon have not only achieved remarkable success but have also become a beacon of hope for young participants from disadvantaged backgrounds who might never have had the chance to swim. Welcoming 100 enthusiastic children aged 8 to 13, we've not only taught them essential swimming techniques but have empowered many to master all four competitive strokes. This program stands as a heartfelt testament to our unwavering commitment to uplift youth and enhance their lives through accessible sports initiatives. By nurturing a passion for swimming, we are not just providing critical life skills; we are instilling a profound sense of confidence and resilience, helping these young individuals dream bigger and embrace a brighter future, all from the transformative experience of being in the water.



"EVERY CHILD'S SMILE - A HOLIDAY RIGHT"

Our holiday clubs were offered through all school holidays, offering Children and young people a wide range of activities and opportunities to socialize, learn and have fun in a safe environment. Creative activities, sports, health nutrition workshops and trips were offered allowing individuals to make new friends, develop skills and explore new interests and environments, encourage self expression and nurture talent. Acting as a Kitchen social hub, nourishing meals and healthy snacks were also provided throughout the holiday provision, ensuring children and young people have access to wholesome foods and do not face holiday hunger.



"STEP INTO NORMALCY: EVERY CHILD DESERVES DIGNITY!"

Our clothing drives are more than just distributions; they are lifelines that instil confidence and restore dignity in children and families facing financial hardships. With each pair of shoes and clothing item we provide, we offer them a chance to step into normalcy and feel just like their peers. In addition to our regular collection and distribution of brand new garments which we collect from retail stores, the charity were able to successfully distribute shoe vouchers to over 500 children/young people, enabling them to shop in local stores for shoes at heavily subsidised costs.

"WARM HEARTS IN COLD TIMES: BRINGING HEAT TO THOSE IN NEED"



As winter cast its chilling grip, countless families faced crises and struggled to keep their homes warm, often forced to choose between heating their living spaces and providing for basic necessities. We stepped in to provide vital support, distributing gas and electric vouchers to those gripped by the energy crisis.

"IN THEIR DARKEST HOUR, WE BRING LIGHT"



At a time when hope seemed a distant memory, our crisis grants offered a lifeline to individuals battling profound challenges and facing immediate and severe hardships. Crisis grants were given in response to situations where individuals were unable to meet their urgent and essential needs due to unforeseen circumstances helping them to stabilize their situation and put them back on their feet. With support from the JAPH Charitable foundation ; additional support was provided to those with physical disabilities , empowering them towards a brighter future.

"ESSENTIALS THAT EMPOWER: A FRESH START FOR EVERYONE"



In the past year, with the invaluable support of In Kind Direct, Mishon has ignited hope through our home essentials assist scheme, delivering life-changing items that transform houses into nurturing sanctuaries for disadvantaged families and children. We've provided not just cleaning supplies, but the essential building blocks of dignity and comfort—soaps, shampoos, toothbrushes, toilet paper, and other vital sanitary products—that ensure every home feels warm, safe, and cared for. Each item we distribute is not just a necessity; it's a symbol of our commitment to empower these families, helping them reclaim their sense of belonging and well-being in an often challenging world.

TRUSTEE REPORT FOR YEAR ENDING MARCH 2024

THE TRUSTEES PRESENT THEIR ANNUAL REPORT WITH ACCOUNTS OF THE CHARITY FOR THE YEAR ENDED 31 MARCH 2024

OBJECTIVES AND ACTIVITIES

Objectives and aims

The Aims of the Charity are as follows 1) To promote and protect the physical and mental health of families who are in need because of their social or economic circumstances through the provision of financial assistance, support, therapeutic activities and/or practical advice. 2) The promotion of any other exclusively charitable objects and purposes as the trustees see fit, provided that they are regarded as charitable by the law of England and Wales.

Public benefit

The trustees confirm that they have referred to the guidance contained in the Charity Commission's general guidance on public benefit when reviewing the charity's aims and objectives and in planning future activities and setting grant making policy for the year.

FINANCIAL REVIEW

Reserves policy

The Trustees aim to maintain unrestricted funds, which are the free reserves of the Charity at a level of 3 – 6 months running costs and up to one year's running costs. Free reserves stand at £ which is lower than the anticipated level of reserves the trustees aim to maintain which is generally at least six months running costs.

Grant making policy

The charity is funded by donations and grants. The charity allocates crises grants in line with the above objects. The charity paid out a total of in grants to individuals; with particular focus on those with physical disabilities in partnership with the JAPH charitable trust.

STRUCTURE GOVERNANCE AND MANAGEMENT

Charity constitution

Mishon is constituted under a trust deed, dated 20th September 2012 and is a Registered Charity with a registered number 1149271.

Recruitment and appointment of new trustees

Recruitment and appointment of new trustees would be in line with the Trust Deed and with the consent of the trustees. The criteria set for the suitable candidate would be someone who is sensitive to the needs and demands of the organization as well as those with lived experience of the challenges which our beneficiaries face. .

Organisational structure

There is no chief executive officer. The day-to-day affairs are undertaken by a devoted team of individuals on a voluntary basis on behalf of the trustees. All major decisions are taken collectively by the trustees and all the trustees give of their time freely with no beneficial interest in the charity.

Risk management

The trustees have assessed the major risks to which the charity is exposed, in particular those related to the operations and finances of the charity, and are satisfied that systems are in place to mitigate their exposure to major risks.

Responsibilities of the Trustees

Charity Law requires the Trustees to prepare financial statements for each financial year which give a true and fair view of the state of affairs of the charity as at the Balance Sheet date, and of its incoming resources, including income and expenditure for the financial year.

In preparing those financial statements, the Trustees should follow best practice and:

- Select suitable accounting policies and the apply them consistently.
- Make judgements and estimates that are reasonable and prudent.
- Follow applicable accounting standards and the Charities SORP 2015, updated May 2008 disclosing and explaining any departures in the financial statements.
- Prepare the financial statements on the going concern basis unless it is inappropriate to assume that the charity will continue in operation.

The Trustees are responsible for maintaining proper accounting records which disclose with reasonable accuracy at any time the financial position of the charity and to enable them as Trustees to ensure that the financial statements comply with the Charity Law. The Trustees are also responsible for safeguarding the charity's assets and hence for taking reasonable steps for the prevention and detection of fraud and other regularities.

Auditor

An independent examiners unqualified report will be prepared by De Claron Ltd Approved by The Trustees on and signed on behalf of them all.

Trustee
Mrs. Nicha Weiss

INDEPENDENT EXAMINER'S UNQUALIFIED REPORT

Independent Examiner's Report to the Trustees of Mishon

I report on the accounts of the Charity for the year ended 31 March 2024, which are set out on pages 5 to 7.

Respective responsibilities of trustees and examiner

The charity's trustees are responsible for the preparation of the accounts. The charity's trustees consider that an audit is not required for this year under the Charities Act 2022 (the 2022 Act) and that an independent examination is needed.

It is my responsibility to

- examine the accounts (under the 2022 Act);
- to follow the procedures laid down in the General Directions given by the Charity Commissioners (under the 2022 Act); and
- to state whether particular matters have come to my attention.

Basis of independent examiner's report

My examination was carried out in accordance with the General Directions given by the Charity Commissioners. An examination includes a review of the accounting records kept by the charity and a comparison of the accounts presented with those records. It also includes consideration of any unusual items or disclosures in the accounts, and seeking explanations from you as trustees concerning any such matters. The procedures undertaken do not provide all the evidence that would be required in an audit, and consequently I do not express an audit opinion on the view given by the accounts.

Independent examiner's statement

In connection with my examination, no matter has come to my attention:

(1) which gives me reasonable cause to believe that in any material respect the requirements

- to keep accounting records in accordance with the 2022 Act; and
- to prepare accounts which accord with the accounting records and comply with

the accounting requirements of the 2022 Act have not been met; or

(2) to which, in my opinion, attention should be drawn in order to enable a proper understanding of the accounts to be reached.



De Claron Ltd.
3a The Vale
LONDON NW11 8SB:
30 December 2024

ACCOUNTING POLICIES

Basis of Accounting

The accounts have been prepared under the historical cost convention in accordance with the Charities Act (Accounts and Reports) 2011, and the Financial Reporting Standard for Smaller Entities 102, and follow the recommendations in Accounting and Reporting By Charities: Statement of Recommended Practice (effective from April 2015)

Income

Donations received for the general and main purpose of the Charity is included as unrestricted funds in the statement of Financial Activities when receivable.

Donations and Grants for activities restricted by the donors are taken to restricted funds if the wishes and conditions of the donor are legally binding on the trustees

Expenditure

Resources expended are accounted for on an accrual basis. Certain expenditure is appointed to cost categories based on the estimated amount attributable to that activity in the year. These estimates are based on the time and level of activity as appropriate.

Governance costs are those incurred in connection with administration of the charity and compliance with constitutional and statutory requirements.

The irrecoverable element of VAT is included with the item of expense to which it relates.

Mishon - y/e 31.03.2024

Statement of Financial Activities

	v/e 31.03.2024			v/e 31.03.2023		
	£	£	£	£	£	£
	Unrestricted Funds	Restricted Funds	Total Funds	Unrestricted Funds	Restricted Funds	Total Funds
INCOMING RESOURCES						
Donations Received						
Donations	32,847.49		32,847.49	19,582.62		19,582.62
Grants Received		217,930.50	217,930.50			
			-	21,332.00	152,251.19	173,583.19
	<u>32,847.49</u>	<u>217,930.50</u>	<u>250,777.99</u>	<u>40,914.62</u>	<u>152,251.19</u>	<u>173,583.19</u>
Activities to further the Charitable Activities			-	40,914.62	152,251.19	193,165.81
Total Incoming Resources	32,847.49	217,930.50	250,777.99	40,914.62	152,251.19	193,165.81
RESOURCES EXPENDED						
Cost of Generating Funds	3,921.00		3,921.00	2,921.00		2,921.00
Net Incoming Resources Available For Charitable Application	28,926.49	217,930.50	246,856.99	37,993.62	152,251.19	190,244.81
Cost of Activities in Furtherance or the Charitable Activities						
Food Parcels and Vouchers		182,844.35	182,844.35		96,346.00	96,346.00
Crisis Grants	2,417.04	9,931.84	12,348.88		3,540.00	3,540.00
Holiday Activities / Trips		21,238.00	21,238.00		19,469.00	19,469.00
Home Essentials	822.40		822.40		1,705.00	1,705.00
Instructors		4,218.00	4,218.00			
Staff Costs	5,879.25	16,310.00	22,189.25	-	7,533.19	7,533.19
Toys	4,842.00		4,842.00			
Venue Hire		4,315.00	4,315.00		2,500.00	2,500.00
Volunteer Costs		953.50	953.50		750.00	750.00
	<u>13,960.69</u>	<u>239,810.69</u>	<u>253,771.38</u>	<u>-</u>	<u>131,843.19</u>	<u>131,843.19</u>
ADMINISTRATIVE EXPENSES						
IT Exp		1,550.00	1,550.00	658.00		658.00
Telephone	85.63	105.05	190.68			
Advertising	355.00		355.00	206.50		206.50
Professional Fee & Acc	677.56		677.56	563.00		563.00
Insurance	214.48		214.48	214.48		214.48
Stationery & Office Supply	97.26	560.00	657.26	198.38	-	198.38

Mishon - y/e 31.03.2024
Statement of Financial Activities

	y/e 31.03.2024			y/e 31.03.2023		
	£	£	£	£	£	£
	Unrestricted Funds	Restricted Funds	Total Funds	Unrestricted Funds	Restricted Funds	Total Funds
	1,429.93	2,215.05	3,644.98	1,840.36	-	1,840.36
Total Charitable Expenditure	13,960.69	239,810.69	253,771.38	-	131,843.19	131,843.19
Total Resources Expended	15,390.62	242,025.74	257,416.36	1,840.36	131,843.19	133,683.55
Net Movement in Funds	13,535.87	(24,095.24)	(10,559.37)	36,153.26	20,408.00	56,561.26
Transfer To / (From) Reserves			-			-
Net Reserves for the Year	13,535.87	(24,095.24)	(10,559.37)	36,153.26	20,408.00	56,561.26
Total Funds Brought Forward	66,187.26	39,660.00	105,847.26	30,034.00	19,252.00	49,286.00
Total Funds Carried Forward	79,723.13	15,564.76	95,287.89	66,187.26	39,660.00	105,847.26

Draft Balance Sheet

	y/e 31.03.2024		y/e 31.03.2023	
	£	£	£	£
CURRENT ASSETS				
CASH IN HAND & BANK	95,287.14		105,847.26	
		95,287.14		105,847.26
CURRENT LIABILITIES				
CREDITORS: Accruals	-		-	
NET ASSETS		95,287.14		105,847.26
FUND ACCOUNT				
Restricted Funds		15,564.76		39,660.00
Unrestricted Funds Total		79,723.13		66,187.26
Funds		95,287.89		105,847.26

MISHON

England & Wales - Charity number 1149271

Accounts

EMPOWERING TODAY FOR A THRIVING TOMMOROW



S H A R E W H A T Y O U C A N

BUILDING

Backbone

MISHON ANNUAL REPORT AND FINANCIAL STATEMENTS
31 MARCH 2023



A Message from the Chair

This year we continued to focus on community-led solutions to deal with the exacerbated level of hunger, disadvantage and need caused by inflation and rising food prices.

Living in a time of rapid change, the charity faced an increased volume of referrals for budgetary relief from those facing sudden job loss, illness and/or unexpected expense with many facing family breakdowns as a result of emotional ill health – all threatening their future in an instant

Yet, we did not desert them. We did not abandon them.

With the support of compassionate people, trusts, and local authorities including the Tallulah Lewis Trust, Arbib Lucas, Respite Association, JAPH, JCHF, McCarthy and Stone Foundation, Julia and Hans Rausing Trust, Sport England, Henry Smith, Hackney Council (HAF and HSF programme) and Haringey Council (HAF and HSF programme), we were able to stand boldly beside them during the darkest hours and meet the rising need.

Compassion, determination and innovation from our many dedicated volunteers and partners have helped us reach where we are today. Together we have enabled people facing daily challenges to weather life's storms and hope for a better future. Together we will continue to pioneer new methods for sourcing and delivering additional programmes to help BUILD BACKBONE –and build stronger families and brighter futures.

Thank you for your steadfast support of our mission and your empathy to support those in need

Best Wishes

N Weiss
Chair

Our Mission

To empower those facing barriers and adversity by providing access to essential resources and opportunities for personal development and fostering self sufficiency to create foundations for a brighter future.

Our Values

1. **Compassion**- we believe in the inherent worth and dignity of every individual and have a deep sense of empathy and compassion for those in need. We recognise that everyone deserves to be treated with kindness, respect and fairness.
2. **Empowerment**- We believe in empowering individuals to lead independent, fulfilling lives and work towards providing support to enable self-sufficiency and personal growth.
3. **Hope and Empathy**- We believe in the power of hope and the capacity for positive change. We inspire hope in individuals, foster resistance and provide support to overcome adversity, while also displaying empathy and understanding for the unique challenges faced by those in need.



GIVING BACK

Together

Meet Peri:



Peri is our youngest volunteer. She has helped her parents for a number of years as they sort, pack and deliver food parcels for Mishon as Mrs F. quotes: Its an absolute privilege to be a volunteer for Mishon. Its not driving that gives me the joy – its seeing the delightful faces of children as we deliver the packages of food and they know that this is their basic nourishment... Going in her parents' footsteps, Peri at the young age of 15 created her own Go fund me and raised a total of **£7500** to support children in need!! *It is with the support of people like Peri and our large bank of 80 volunteers who provide additional resources and manpower which has helped us carry out our mission in the most cost effective manner ensuring funds are allocated directly to benefit beneficiaries.*

EMPOWERMENT *chronicles* Meet David:

David unfortunately tasted misery as a child. With battling parents over children's custody, young David struggled trying to act as big brother and helping his father out with caring for his siblings. But when his mother ran off his pain know no bounds. Mishon stepped in to find starving children, a kitchen that could barely be called so and a father torn between earning a living and caring for his children. Mishon made sure to send in daily nourishing hot food, stocked the cupboards and refrigerator with food and snacks and got volunteers to refurbish the kitchen so that it can rightly be called kitchen again. We also brought in volunteers to spend time with the children and mentor them in their educational lessons.

David faced, doom and gloom. Given the tools, resources and support to gain control, confidence and autonomy in his life, David and many others like him are able to succeed in their journey from disempowerment to empowerment.



Meet Sari:



Sari's sister has recently been diagnosed with cancer. Last month was the long-awaited appointment to amputate her leg. Since her diagnosis, the family have hardly seen their parents and sister as they've been more in hospital than at home. 18-year-old Sari has taken over the burden of running the home and keeping the children occupied.

Together with Mishon, she's doing an amazing job. "I was so worried about the upcoming holidays" she told our support worker Haya. "How would I occupy all my siblings when there's no school, no homework, no routine and no parents? Just an atmosphere of gloom pervading the house.

Yet with your support of daily boxes of food and novelties for the kids, vouchers for the grocery store so that the children can choose food of their liking, crafts and guess what? even vouchers to the toy shop so each child could choose their own toys! This didn't even fit into our dreams!

Her relief is palpable.

With feelings of joy, magic transformation and moments of respite and happiness our young participants look forward to holiday periods which create memories to cherish forever.

2023 & BEYOND DOING MORE...

- We will **DO MORE** to maximize sourcing and provide more nutritious meals
- We will **DO MORE** to invest in those disproportionately impacted by hunger
- We will **DO MORE** to improve economic pathways out of the poverty cycle
 - We will **DO MORE** to meet increased demand
 - We will **DO MORE** to support the vulnerable including the elderly and disabled
- We will **DO MORE** to address the root causes of poverty and disadvantage, not just the symptoms.

OUR Approach

Individuals facing poverty and disadvantage often encounter a range of challenges that can further perpetuate their disadvantaged circumstances. Including limited access to basic needs such as food, limited social support, isolation and exclusion, mental and emotional health issues due to increased stress, anxiety caused by the constant struggle and uncertainty

Addressing these challenges, the charity provided a comprehensive and multi-faceted approach with a focus on poverty alleviation, nutrition education and social support.

Home essentials assist

With support from In Kind Direct, the charity was able to introduce a home essential assist scheme providing crucial items for ensuring a comfortable and safe living environment including Cleaning Supplies and personal Care Items: Soap, shampoo, toothbrushes, toilet paper, and other basic sanitary products.

Food aid express

Hunger can affect people from all walks of life with many just one job loss, missed paycheque or emergency away from hunger. But hunger doesn't affect everyone equally - some groups like children and seniors are at much higher rate effecting health, development and wellbeing.

The charity provided nourishment and support through

- * Access to essential and nutritious cooked meals for individuals and families
 - * Voucher scheme – providing beneficiaries with the opportunity to choose and purchase their own food, allowing them to maintain their dignity and autonomy
 - * Senior food hamper boxes delivered to pensioners over the holiday period
 - * Mobile pantries – beneficiaries were able to buy good quality food at a low cost with a package value of £15 - £20 at a cost of £3.50 - £4.00
- With thanks to our volunteers, we were also able to rescue good food from local wholesalers, restaurants and other from going to waste and distribute to local families in need making healthier food the easier choice for struggling families

Crisis Grants

Crisis grants were given in response to situations where individuals were facing immediate and severe hardships and emergencies and unable to meet their urgent and essential needs due to unforeseen circumstances such as unexpected medical expenses, essential household items and respite breaks where individuals were on the verge of breakdown.

These grants helped individuals stabilize their situation and put them back on their feet

Holiday Clubs

Holiday clubs providing a wide range of activities and opportunities for children and young people to socialize, learn, and have fun in a safe and supervised environment were provided during school holidays. Creative activities, sports, health nutrition workshops, and trips were offered allowing individuals to make new friends, develop skills and explore new interests and environments, encourage self-expression, and nurture talent. Healthy meals and snacks were also provided through the holiday provision, ensuring children and young people received the necessary nutrients for their day and did not face holiday hunger.

Clothing Drive

With a mission to bring brightness and confidence to individuals and families facing financial hardships, our clothing drive focuses on collecting and distributing brand-new garments to ensure that recipients receive high-quality, unworn clothing.

The charity collaborates with retail stores, and clothing brands to solicit generous contributions of new clothing items. This collaborative approach ensures a diverse selection of styles, sizes, and seasons, catering to the diverse needs of the recipients.

We implement a thoughtful and dignified distribution process, where individuals and families can choose the garments that suit their style and size. This approach promotes inclusivity and allows recipients to select clothing they feel confident in, empowering them to face the challenges they may be experiencing.

Furniture Drive

Where it is a piece of furniture that has broken or is missing and there is a need for replacement, the charity conducts a thorough needs assessment with beneficiaries to determine their specific furniture requirements – for some it may be not enough beds for the children, a broken fridge, or a dryer. Once we are clear on their living situation, family size, and any specific needs or preferences they may have we can match up furniture others may be looking to give away. We ensure only items of good quality are received by beneficiaries. If we cannot match up, we will look at securing sponsors to cover the costs of a new item.

Sport Programme

Our swim club operates with a clear mission, offering swimming classes tailored to various age groups focusing on teaching proper swimming techniques, improving endurance and speed, and fostering overall skill development with an emphasize on the importance of discipline, teamwork, and sportsmanship.

REPORT OF THE TRUSTEES

The Trustees present their annual report with accounts of the Charity for the Year Ended 31 March 2023.

Status and Administration

Mishon is constituted by trust deed, dated 20th September 2012 and is a Registered Charity with number 1149271. Recruitment and appointment of new trustees would be in line with the Trust deed and with the consent of the trustees. The criteria set for the suitable candidate would be someone who is sensitive to the needs and demands of the organisation as well as those with lived experience of the challenges which our beneficiaries face. There is no chief executive officer. The day-to-day affairs are undertaken by a devoted team of individuals on a voluntary basis on behalf of the trustees. All major decisions are taken collectively by the trustees. No trustee has any beneficial interest in the charity and all the trustees give their time freely.

Public Benefit

The trustees confirm that they have referred to the guidance contained in the Charity Commissions' general guidance on public benefit when reviewing the charity's aims and objectives and in planning future activities and setting grant making policy for the year.

Board of Trustees

The Trustees in office throughout the year were:

Mrs Nicha Weiss
Mr Isaac Honig
Mr Naftoli Chaim Blau

Objectives and Activities

The Aims of the charity are as follows:

1. To promote and protect the physical and mental health of families who are in need because of their social or economic circumstances, through the provision of financial assistance, support, therapeutic activities and/or practical advice.
2. The promotion of any other exclusively charitable objects and purposes as the trustees see fit, provided that they are regarded as charitable by the law of England and Wales

The trustees have been delighted with the level of support from the community and are satisfied with progress made. The trustees confirm their compliance with the duty to have due regard to the public benefit guidance published by the Charity Commission when reviewing the charity's aims and objectives and in planning future activities.

Reserves policy

Free reserves of the charity stand at £66,187 and restricted at £39,660 of which £31,500 was paid out at the beginning of April 2023 for activities which took place in March 2022. Restricted monies have been received towards the end of the year for particular projects in the following year, of which £7490 is allocated for our Swim group running till December 2023. Free reserves stand at approx. 6 months current running costs. However, the trustees feel this is in line with increase in demand for our services as a result of the Cost of Living Crisis and will be used in the event where we are unable to secure funds to support the additional people reaching out to us with food parcels in the future

RISK ASSESEMENTS

The trustees have assessed the major risks to which the charity is exposed, in particular those related to the operations and finances of the charity, and are satisfied that systems are in place to mitigate their exposure to major risks.

Grant making policy

The charity is funded by donations and grants. The charity gives out crisis grants in line with the above objects. The charity paid out a total of £4540 in grants to individuals falling in line with the charity's objects.

Responsibilities of the trustees

Charity Law requires the Trustees to prepare financial statements for each financial year which give a true and fair view of the state of affairs of the charity as at the Balance Sheet date and of its incoming resources, including income and expenditure for the financial year.

In preparing those financial statements, the Trustees should follow best practice and:

- a) Select suitable accounting policies and apply them consistently
- b) Make judgements and estimate that are reasonable and prudent
- c) Follow applicable accounting standards and the Charities SORP 2015

Updated May 2008 disclosing and explaining any departures in the financial statements

Prepare the financial statements on the going concern basis unless it is inappropriate to assume that the charity will continue in operation. The trustees are responsible for safeguarding the charity's assets and hence for taking reasonable steps for the prevention and detection of fraud and other regularities

Auditor

An independent examiner's unqualified report will be prepared by De Claron Ltd

Approved by the Trustees on 21 January 2024
And signed on behalf of them all

Trustee
Mrs Nicha Weiss

ACCOUNTING POLICIES

1. Basis of Accounting

The Accounts have been prepared under the historical cost convention in accordance with the Charities Act (Accounts and Reports) 2011, and the Financial Reporting Standard for Smaller Entities 102, and follow the recommendations in Accounting and Reporting By Charities: Statement of Recommended Practice (effective from April 2015)

Donations and Fund Accounting

Donations received for the general and main purpose of the Charity is included as unrestricted funds in the statement of Financial Activities when receivable. Donations and Grants for activities restricted by the donors are taken to restricted funds if the wishes and conditions of the donor are legally binding on the trustees

Resources expended

Resources expended are accounted for on an accrual basis. Certain expenditure is appointed to cost categories based on the estimated amount attributable to that activity in the year. These estimates are based on the time and level of activity as appropriate. Governance Costs are those incurred in connection with the administration of the charity and compliance with constitutional and statutory requirements. The irrecoverable element of VAT is included with the item of expense to which it relates.

2. Net incoming resources

During the year no trustees received any remuneration, benefits in kind or reimbursement of expenses.

3. Income from Donations

2023 RESTRICTED	2023 UNRESTRICTED	2023 TOTAL	2022 TOTAL
£152,251	£40,914	£ 193,165	£169,430

3. Resources expended on charitable activities

Venue hire	£2500
Food parcels and vouchers	£96346
Crisis grants	£3540
Holiday activities and trips	£19469
Volunteer costs	£750
Home essentials	£1706
Staff	£7533

A total of £31,500 which is on accrual basis was paid out at the beginning of April 2023 for activities which took place in March 2023.

Restricted monies have been received towards the end of the year for particular projects in the following year of which £7490 is allocated for our swim group running till December 2023.

INDEPENDENT EXAMINER'S UNQUALIFIED REPORT TO THE MEMBERS OF MISHON

Independent Examiner's Report to the Trustees of Mishon

I report on the accounts of the Charity for the year ended 31 March 2023, which are set out on pages 5 to 7.

Respective responsibilities of trustees and examiner

The charity's trustees are responsible for the preparation of the accounts. The charity's trustees consider that an audit is not required for this year under the Charities Act 2022 (the 2022 Act) and that an independent examination is needed.

It is my responsibility to:

- examine the accounts (under the 2022 Act);
- to follow the procedures laid down in the General Directions given by the Charity
- to state whether particular matters have come to my attention.

Basis of independent examiner's report

My examination was carried out in accordance with the General Directions given by the Charity Commissioners. An examination includes a review of the accounting records kept by the charity and a comparison of the accounts presented with those records. It also includes consideration of any unusual items or disclosures in the accounts, and seeking explanations from you as trustees concerning any such matters. The procedures undertaken do not provide all the evidence that would be required in an audit, and consequently I do not express an audit opinion on the view given by the accounts.

Independent examiner's statement

My examination was carried out in accordance with the General Directions given by the Charity Commissioners. An examination includes a review of the accounting records kept by the charity and a comparison of the accounts presented with those records. It also includes consideration of any unusual items or disclosures in the accounts, and seeking explanations from you as trustees concerning any such matters. The procedures undertaken do not provide all the evidence that would be required in an audit, and consequently I do not express an audit opinion on the view given by the accounts.

Independent examiner's statement

In connection with my examination, no matter has come to my attention:

- (1) which gives me reasonable cause to believe that in any material respect the requirements
- to keep accounting records in accordance with the 2022 Act; and
 - to prepare accounts which accord with the accounting records and comply with the accounting requirements of the 2022 Act have not been met; or
- (2) to which, in my opinion, attention should be drawn in order to enable a proper understanding of the accounts to be reached.



De Claron Ltd.
LONDON NW11 8SB:
22 January 2024



Mishon

The board of trustees

Mrs. Nicha Weiss

Mr. Isaac Honig

Mr. Naftoli Chaim Blau

Independent Examiner

De Claron Ltd

Unit A

3 The Vale

London NW11 8SB

Charity Office

2 Filey Avenue London

N16 6NT

info@mishonsupport.co.uk

Bankers TSB

174 Clapton Common London

E5 9AQ

Registered charity name:

Mishon

Charity Number: 1149271



*Mishon - y/e 31.03.2023**Statement of Financial Activities*

	y/e 31.03.2023			y/e 31.03.2022		
	£	£	£	£	£	£
	Unrestricted Funds	Restricted Funds	Total Funds	Unrestricted Funds	Restricted Funds	Total Funds
INCOMING RESOURCES						
Donations & Fees						
Donations	19,582.62		19,582.62	11,251.00	250.00	11,501.00
Parental Contributions	-	-	-	2,000.00	-	2,000.00
	<u>19,582.62</u>	<u>-</u>	<u>19,582.62</u>	<u>13,251.00</u>	<u>250.00</u>	<u>13,501.00</u>
Grants Received	21,332.00	152,251.19	173,583.19	1,000.00	154,929.00	155,929.00
	<u>40,914.62</u>	<u>152,251.19</u>	<u>193,165.81</u>	<u>14,251.00</u>	<u>155,179.00</u>	<u>169,430.00</u>
Activities to further the Charitable Acto	40,914.62	152,251.19	193,165.81	14,251.00	155,179.00	169,430.00
	<u>40,914.62</u>	<u>152,251.19</u>	<u>193,165.81</u>	<u>14,251.00</u>	<u>155,179.00</u>	<u>169,430.00</u>
Total Incoming Resources	40,914.62	152,251.19	193,165.81	14,251.00	155,179.00	169,430.00
RESOURCES EXPENDED						
Cost of Generating Funds	2,921.00		2,921.00	-	-	-
Net Incoming Resources Available For Charitable Application	37,993.62	152,251.19	190,244.81	14,251.00	155,179.00	169,430.00
Cost of Activities in Furtherance or the Charitable Activities						
Venue Hire		2,500.00	2,500.00			
Food Parcels and Vouchers		96,346.00	96,346.00		118,622.00	118,622.00
Crisis Grants		3,540.00	3,540.00		4,407.00	4,407.00
Holiday Activities / Trips		19,469.00	19,469.00		28,137.00	28,137.00
Toys and Stationery			-		1,590.00	1,590.00
Volunteer Costs		750.00	750.00	200.00	250.00	450.00
Home Essentials		1,705.00	1,705.00			-
Staff Costs	-	7,533.19	7,533.19	5,139.00	9,850.00	14,989.00
	<u>-</u>	<u>131,843.19</u>	<u>131,843.19</u>	<u>5,339.00</u>	<u>162,856.00</u>	<u>168,195.00</u>
	-	131,843.19	131,843.19	5,339.00	162,856.00	168,195.00

ADMINISTRATIVE EXPENSES						
Governance Costs			-	340.00	-	340.00
IT Exp	658.00		658.00			-
Advertising	206.50		206.50	110.00		110.00
Professional Fee & Acc	563.00		563.00			-
Insurance	214.48		214.48			-
Stationery & Office Supply	198.38	-	198.38	214.00	314.00	528.00
	1,840.36	-	1,840.36	664.00	314.00	978.00
Total Charitable Expenditure	-	131,843.19	131,843.19	5,339.00	162,856.00	168,195.00
Total Resources Expended	1,840.36	131,843.19	133,683.55	6,003.00	163,170.00	169,173.00
Net Movement in Funds	36,153.26	20,408.00	56,561.26	8,248.00	7,991.00	257.00
Transfer To / (From) Reserves			-	-	-	-
Net Reserves for the Year	36,153.26	20,408.00	56,561.26	8,248.00	7,991.00	257.00
Total Funds Brought Forward	30,034.00	19,252.00	49,286.00	21,786.00	27,243.00	49,029.00
Total Funds Carried Forward	66,187.26	39,660.00	105,847.26	30,034.00	19,252.00	49,286.00

Draft Balance Sheet

	y/e 31.03.2023		y/e 31.03.2022	
	£	£	£	£
CURRENT ASSETS				
CASH IN HAND & BANK	105,847.26		49,626.00	
		105,847.26		49,626.00
CURRENT LIABILITIES				
CREDITORS: Accruals	-		340.00	
			340.00	
NET ASSETS		105,847.26		49,286.00
FUND ACCOUNT				
Restricted Funds	39,660.00		19,252.00	
Unrestricted Funds	66,187.26		30,034.00	
Total Funds		105,847.26		49,286.00



**‘EMBRACE THE SPIRIT OF
BENEVOLENCE, IGNITE
TRANSFORMATION’**

EMPOWERING TODAY FOR A THRIVING TOMMOROW

MISHON

England & Wales - Charity number 1149271

Accounts

A BOLD ASPIRATION

For a better tomorrow



MISHON ANNUAL REPORT AND FINANCIAL STATEMENTS 31 MARCH 2022

Charity Registration number: 1149271

POVERTY IS A VERY COMPLICATED ISSUE, BUT FEEDING A CHILD ISN'T.

15160
hours of
volunteering

16780
Food
parcels

48
devoted
volunteers



message from chair

Mishon continues to mature as an organisation as it nears its 10th anniversary

The organisation saw yet another increase in activity due largely to Covid 19 pandemic as well as the cost of living crisis. The rise in food prices and the cut of the £20 uplift in universal credit both contributed to the numbers of those experiencing poverty increasing.

This was seen in the demand for food, both raw and cooked as well as food vouchers. There is a lot of panic amongst people which is affecting emotional health too - we need to continue to support the young and old and empower each person to overcome the adversity they face. If they stumble, we're there to pick them back up and offer support to pull themselves together and move their lives forward

The trustees would like to express immense gratitude to:

-Our fantastic team of volunteers – your time, skills, energy and dedication are crucial to the operations of our work. We would never have managed without you

-We are immensely grateful to all our partners, foundations, trust and individuals who supported our work. Together we accomplished tremendous achievements amid extraordinary circumstances. We know we can do even more – and with you as our partners, we will.

Thank you for your steadfast support of our mission to support the vulnerable and disadvantaged, this enabled us to deliver services with significant growth

Despite the outlook not being great we continue to look to the future with hope and aspiration.

Together we join hands, and with strength and determination will continue to march forward to address and tackle poverty and disadvantage through our wide range of services that address both the causes and consequences of poverty.

We will stay strong, to be strong in rough times together and emerge victorious over the challenges faced

With best wishes for a promising future

OUR MISSION

→ **TO EMPOWER** ←
THOSE FACING COMPLEX BARRIERS AND
ADVERSITY TO TURN THEIR LIVES AROUND,
move forward and build a better future.



OUR VISION

WE EMPOWER AND ENCOURAGE EACH PERSON TO
OVERCOME THE ADVERSITY THEY FACE. IF THEY STUMBLE,
WE'RE THERE TO PICK THEM BACK UP. WE WANT TO SEE
A SOCIETY WHERE THOSE FACING COMPLEX BARRIERS ARE
GIVEN THE OPPORTUNITY AND ENCOURAGEMENT TO MOVE
THEIR LIVES FORWARD.
WE WANT TO SEE A SOCIETY, WHERE NO PERSON SHOULD
GO HUNGRY OR HAVE TO MAKE THE DIFFICULT DECISION OF
EATING OR HEATING.

FOOD PARCELS

Many households are struggling to feed themselves and their families, let alone maintain healthy diets and many children are going without adequate food and nutrition.

Individuals including the young and old we supported are those at risk of hunger, malnutrition and/or social isolation. This includes families with young children from socio- economically disadvantaged communities and households, those with no recourse to public funds or support and those facing physical and/or mental health challenges.

The charity collected surplus foods from retailers and wholesalers and redistributed to many grateful recipients. Most of this food would otherwise have gone to waste or landfill.

With our mission of 'building backbone', not wanting to take away independence and to encourage autonomy the charity distributed food vouchers as well as food parcels to local needy residents including the elderly.

The food voucher system has multiple advantages:

- * Overall, using food vouchers offers a more dignified option, allowing people to choose the food they want instead of working within the limited parameters of a food parcel
- * Reduces loneliness and isolation, as people still have to go out and 'shop' for their food rather than it just being given to them. They meet friends and socialize at the same time
- * Resources are maximised. The charity pre-arranges with local shops for use of vouchers and are able to secure discounts and best value



HOLIDAY ACTIVITIES

The Challenge

For most families, holidays are a period of time to look forward to. A time of fun, laughter and quality family time. However, for our users' holidays are a nightmare. These vulnerable disadvantaged children have little to look forward to. Holidays tend to be the most stressful and difficult times for them, as resources are limited for them either due to family circumstances or financial restraint. They struggle with boredom which ultimately leads to high stress levels and inability to function normally. They face the risk of experiencing food insecurity, depression, anxiety, and social isolation

Our Response...

At Mishon, we aim to give these children / young people the very best in life and opportunities they richly deserve so they can anticipate a future that is as productive and fulfilling as possible. The charity were able to support children and young people to access fun filled days with lots of enriching activities during the summer, winter and Easter school holiday. These included a large range of on site activities as well as trips to the coast, parks and farms to embrace and interest all C&YP regardless of age / ability.

The schemes encouraged C&YP to eat more healthy and be more active. Young people also gained a greater knowledge of health and nutrition as a result of all the workshops and hands on activities



HEALTHY MEALS

There are many experiencing food hunger, yet tones of surplus fresh food is thrown away every day. Mission aim to bring about change so no-one should have to miss a meal. Our team of volunteers collect and pack surplus food from local caterers and shops, which is then delivered to those who may otherwise go to bed on an empty stomach either due to poverty, disability and/or dysfunction. We get the right food to the right people at the right time.



CRISIS GRANTS



Sometimes an 'emergency item' can make or break a family. Mission assessed each case and with the trustees' recommendation provided some with furniture, others with clothing whilst some needed emergency emotional therapy to avoid further breakdown

The charity also provided help and support to new mothers, those with disabled children and others going through ill health with respite grants. This enabled them to have much needed respite, and aided recovery



CLOTHING AND HOUSEHOLD HELP

For our beneficiaries a broken fridge is reason for panic. A new one is a dream for 'when I will be rich'. At Mishon, we match up and distribute both new and second-hand furniture, clothes and toys ensuring the disadvantaged amongst us have basic household items.

Treasure chests:

Its always hard in the run up to Chanukah, when the kids are making 'wish lists' of gifts they want from parents and grandparents. Our families are counting pennies to make sure they have food, never mind gifts. Mishon packed up 'treasure chests' filled with toys and games and dropped off to 45 local families, to enjoy over the Chanukah holiday period.



2022 and BEYOND



The cost of living crisis, however, continues. Rising inflation and increases in taxes and energy costs are yet to leave millions worse off. In addition the war in Ukraine has caused uncertainty over oil supply, pushing prices even higher.

The outlook is not great, and we know there will be further increase in demand for services including from the elderly who were on low paid jobs and are now struggling to survive on state pension and are now having to make the choice of heating or eating and from individual who may be seeking asylum due to war in their homeland.

GOALS FOR 2023

- Stabilise the organisation after significant growth during and in response to the pandemic, becoming more efficient
- Explore, evaluate and decide how best to diversify the charity's income streams, to allow the charity to plan with greater certainty, meeting the ever-increasing demand to feed the hungry, deliver holiday programmes amongst others
- To develop further services and programmes to address the root causes of financial crisis, disadvantage and reduce the need for charity and/or food aid
- To expand our holiday provision to include an after school sport programme mainly addressing lack of physical activity within the communities we serve as well as the sedentary lifestyles young people have become accustomed to as a result of the pandemic.

OUR FUNDERS

 Hackney

Haringey
LONDON

The
Respite
Association

The
Henry Smith
Charity
founded in 1628



The
CHARLES S FRENCH
CHARITABLE
TRUST

Arnold Clark
**COMMUNITY
FUND**

Jewish Child's Day

Transforming the lives of children in need

THE ARBIB LUCAS CHARITY
Registered Charity No. 208666

**ANTHONY BOURNE
FOUNDATION**



Board of Trustees

Mrs. Nicha Weiss

Mr. Isaac Honig

Mr. Naftoli Chaim Blau

Independent Examiner

C. Rosen & Co

149a Clapton Common

London E5 9AE

Charity Office

2 Filey Avenue

London N16 6NT

Bankers

TSB

174 Clapton Common

London E5 9AQ

Registered charity name: Mishon

Charity Number: 1149271

Mishon Report of the Trustees

The Trustees present their annual report with accounts of the Charity for the Year Ended 31 March 2022.

Status and Administration

Mishon is constituted by trust deed, dated 20th September 2012 and is a Registered Charity.

Trustees

The Trustees in office throughout the year were:

Mrs. Nicha Weiss

Mr. Isaac Honig

Mr. Naftoli Chaim Blau

No trustee has any beneficial interest in the Charity and all gave their time voluntarily.

Objectives and Activities

The Aims of the Charity are as follows

- 1) To promote and protect the physical and mental health of families who are in need because of their social or economic circumstances, through the provision of financial assistance, support, therapeutic activities and/or practical advice.
- 2) The promotion of any other exclusively charitable objects and purposes as the trustees see fit, provided that they are regarded as charitable by the law of England and Wales.

The trustees have been delighted with the level of support from the community and are satisfied with progress made.

The trustees confirm their compliance with the duty to have due regard to the public benefit guidance published by the Charity Commission when reviewing the charity's aims and objectives and in planning future activities

Report of the Trustees

Reserves Policy

Free reserves of the charity stand at £30,334 and restricted at £19,252 of which £11,184 was paid out at the beginning of April 2022 for activities which took place in March 2022 .

Restricted monies have been received towards the end of the year for particular projects in the following year.

Free reserves stand at lower than the anticipated level of reserves the trustees aim to maintain which is generally a level of at least six months running costs . However, in response to the current economic environment, it was felt sensible to provide support to beneficiaries at such difficult times rather than maintain the expected level of reserves.

Status and Administration

Mishon is constituted under a trust deed, dated 20th September 2012 and is a Registered Charity

with a registered number 1149271. Recruitment and appointment of new trustees would be in line with the Trust Deed and with the consent of the trustees. The criteria set for the suitable candidate would be someone who is sensitive to the needs and demands of the organisation as well as those with lived experience of the challenges which our beneficiaries face.

There is no chief executive officer. The day-to-day affairs are undertaken by a devoted team of individuals on a voluntary basis on behalf of the trustees. All major decisions are taken collectively by the trustees and all the trustees give of their time freely. The trustees are unpaid and details of any related party transactions are disclosed as applicable in the notes to the accounts. The arrangements for setting the pay of the charity's employees is the sole domain of the trustees.

Public Benefit

The trustees confirm that they have referred to the guidance contained in the Charity Commission's general guidance on public benefit when reviewing the charity's aims and objectives and in planning future activities and setting grant making policy for the year.

Grant Making Policy

The charity is funded by donations and grants. The charity gives out crisis grants in line with the above objects. The charity paid out a total of £4,407 in grants to individuals falling in line with the charity's objects.

Responsibilities of the Trustees

Charity Law requires the Trustees to prepare financial statements for each financial year which which give a true and fair view of the state of affairs of the charity as at the Balance Sheet date, and of its incoming resources, including income and expenditure for the financial year.

In preparing those financial statements, the Trustees should follow best practice and:

- a) Select suitable accounting policies and the apply them consistently.
- b) Make judgements and estimates that are reasonable and prudent.
- c) Follow applicable accounting standards and the Charities SORP 2015, updated May 2008 disclosing and explaining any departures in the financial statements.
- d) Prepare the financial statements on the going concern basis unless it is inappropriate to assume that the charity will continue in operation.

The Trustees are responsible for maintaining proper accounting records which disclose with reasonable accuracy at any time the financial position of the charity and to enable them as Trustees to ensure that the financial statements comply with the Charity Law. The Trustees are also responsible for safeguarding the charity's assets and hence for taking reasonable steps for the prevention and detection of fraud and other regularities.

Board Of Trustees

The members of the Board Of Trustees are set out on Page 1.

Approved by The Trustees on 9 January 2023
and signed on behalf of them all.

Trustee
Mrs. Nicha Weiss

Mishon					
Statement Of Financial Activities					
For The Year Ended 31 March 2022					
	Notes	Unrestricted Funds £	Restricted Funds £	2022 Total Funds £	2021 Total Funds £
INCOMING RESOURCES					
Activities to further the Charitable Activities	2	<u>14,251</u>	<u>155,179</u>	<u>169,430</u>	<u>136,671</u>
Total Incoming Resources		14,251	155,179	169,430	136,671
RESOURCES EXPENDED					
Cost of Generating Funds		<u>0</u>	<u>0</u>	<u>0</u>	<u>0</u>
Net Incoming Resources Available For Charitable Application		14,251	155,179	169,430	136,671
Cost of Activities In Furtherance of the Charitable Activities	3	5,663	163,170	168,833	105,541
Governance Costs	5	<u>340</u>	<u>0</u>	<u>340</u>	<u>606</u>
Total Charitable Expenditure		6,003	163,170	169,173	106,147
Total Resources Expended	3	<u>6,003</u>	<u>163,170</u>	<u>169,173</u>	<u>106,147</u>
Net Movement In Funds		8,248	(7,991)	257	30,524
Transfer To / (From) Reserves		<u>0</u>	<u>0</u>	<u>0</u>	<u>0</u>
Net Reserves for the Year		<u>8,248</u>	<u>(7,991)</u>	<u>257</u>	<u>30,524</u>
Total Funds Brought Forward		21,786	27,243	49,029	18,505
Total Funds Carried Forward	10	<u>£ 30,034</u>	<u>£ 19,252</u>	<u>£ 49,286</u>	<u>£ 49,029</u>

Mishon			
Balance Sheet at 31 March 2022			
	Notes	2022 £	2021 £
Current Assets			
Cash at Bank and in Hand		<u>49,626</u>	<u>49,529</u>
		49,626	49,529
Creditors : Amounts falling due within one year	8	<u>(340)</u>	<u>(500)</u>
Net Current Assets		<u>49,286</u>	<u>49,029</u>
Total Assets less Current Liabilities		<u>49,286</u>	<u>49,029</u>
Net Assets	9	<u>£ 49,286</u>	<u>£ 49,029</u>
Restricted Funds	10	19,252	27,243
Unrestricted Funds	11	<u>30,034</u>	<u>21,786</u>
Total Funds		<u>£ 49,286</u>	<u>£ 49,029</u>

Approved by the Trustees on 9 January 2023, and signed on behalf of them all.

Mrs. Nicha Weiss
Trustee

The notes on pages 6 to 8 form part of these accounts.

Notes To The Accounts - 31 March 2022

1) Principal Accounting Policies

Basis of Accounting

The Accounts have been prepared under the historical cost convention in accordance with the Charities Act (Accounts and Reports) 2011, and the Financial Reporting Standard for Smaller Entities 102, and follow the recommendations in Accounting and Reporting By Charities: Statement of Recommended Practice (effective from April 2015).

Cash Flow

The accounts do not include a cash flow statement because the charity as a small reporting entity is exempt from the requirement to prepare such a statement.

Donations and Fund Accounting

Donations received for the general and main purposes of the Charity is included as unrestricted funds in the Statement of Financial Activities when receivable.

Donations and Grants for activities restricted by the donors are taken to restricted funds if the wishes and conditions of the donor are legally binding on the Trustees.

Resources Expended

Resources expended are accounted for on an accruals basis. Certain expenditure is apportioned to cost categories based on estimated amount attributable to that activity in the year. These estimates are based on the time and level of activity as appropriate.

Governance Costs are those incurred in connection with administration of the charity and compliance with constitutional and statutory requirements.

The irrecoverable element of VAT is included with the item of expense to which it relates.

	Unrestricted Funds £	Restricted Funds £	Total 2022 £	Unrestricted Funds £	Restricted Funds £	Total 2021 £
2) Incoming Funds						
Donations	11,251	250	11,501	19,130	0	19,130
Parental Contributions	2,000	0	2,000	0	0	0
Job Retention Support	0	0	0	3,792	0	3,792
Total Donations and Fees	13,251	250	13,501	22,922	0	22,922
Grants Received						
Arbib Lucas	0	250	250		300	300
Anthony Bourne		2,950	2,950			
Anrold Clarke	1,000	0	1,000		0	0
Charles S French		3,750	3,750			0
City Bridge Trust	0	0	0		25,000	25,000
Defra Government Grant	0	0	0		30,000	30,000
East End Community Fund	0	0	0		14,859	14,859
Haringey Giving	0	0	0		5,000	5,000
Henry Smith	0	2,357	2,357		0	0
JAPH		500	500		0	0
Jewish Child Holiday Fund	0	2,500	2,500		3,300	3,300
London Borough of Hackney	0	124,122	124,122		24,150	24,150
London Borough of Haringey	0	17,150	17,150		1,610	1,610
National Lottery Response Func	0	0	0		9,530	9,530
Respite Association	0	1,350	1,350		0	0
Total Grants	1,000	154,929	155,929	0	113,749	113,749
Total Income Generated	£ 14,251	£ 155,179	£ 169,430	£ 22,922	£ 113,749	£ 136,671

Notes To The Accounts - 31 March 2022

	Unrestricted Funds £	Restricted Funds £	Total 2022 £	Unrestricted Funds £	Restricted Funds £	Total 2021 £
3) Analysis of Total Resources Expended						
Charitable Activities						
Cost of Activities In Furtherance of the Charitable Activities						
Charitable Activities						
Advertising	110	0	110	480	120	600
Entertainment and Trips	0	9,200	9,200	0	0	0
Food Parcels and Vouchers	0	118,622	118,622	8,663	76,391	85,054
Grants	0	4,407	4,407	3,288	1,700	4,988
Holiday Activities	0	18,937	18,937	560	4,850	5,410
Office Costs	214	314	528	115	0	115
Toys and Stationery	0	1,590	1,590	74	1,008	1,082
Volunteer Costs	200	250	450	60	42	102
Staff Costs	<u>5,139</u>	<u>9,850</u>	<u>14,989</u>	<u>5,795</u>	<u>2,395</u>	<u>8,190</u>
Total Charitable Activities	5,663	163,170	168,833	19,035	86,506	105,541
Total Cost of Activities In Furtherance of the Charitable Activities	<u>£ 5,663</u>	<u>£ 163,170</u>	<u>£ 168,833</u>	<u>£ 19,035</u>	<u>£ 86,506</u>	<u>£ 105,541</u>
Staff Costs include Payments from the Furlough Job Retention Scheme.						
4) Cost of Generating Funds			£ 0			£ 0
5) Governance Costs						
Accountancy			340			606
			<u>£ 340</u>			<u>£ 606</u>
6) Taxation						
The Charity is exempt from taxation on its charitable activities.						
7) The average number of Employees during the year, on a full time equivalent basis was				2022	2021	
				<u>2</u>	<u>2</u>	
No Employee was paid above £60,000 per year.						
The charity employed the equivalent of 2 full time employees during the year as well as sessional staff for holiday activities.						
8) Related Party Transactions						
No trustee nor any person connected with them received any remuneration, or claimed any expense, during the year, from this or any related Charity.						
There were no Related Party Transactions in the Year.						

Mishon
Notes To The Accounts - 31 March 2022

8) Creditors: Amounts falling due within one year

	2022	2021
	£	£
Accruals	340	500
	<u>£ 340</u>	<u>£ 500</u>

9) Net Assets of The Charity's Funds

	Fixed Assets	Net Current Assets	Long Term Liabilities	Fund Balances
	£	£	£	£
Restricted Funds	0	19,252	0	19,252
Unrestricted Funds	0	30,034	0	30,034
Total Funds	£ 0	£ 49,286	£ 0	£ 49,286

10) Restricted Funds : Movements In The Year

	Balance at 31 March 2021	Income	Expended	Transfer To /(From) Reserves	Balance at 31 March 2022
	£	£	£	£	£
	27,243	155,179	163,170	0	19,252
Total Funds	£ 27,243	£ 155,179	£ 163,170	£ 0	£ 19,252

11) Unrestricted Funds : Movements In The Year

	Balance at 31 March 2021	Income	Expended	Transfer To /(From) Reserves	Balance at 31 March 2022
	£	£	£	£	£
General Reserve	21,786	14,251	6,003	0	30,034
Total Funds	£ 21,786	£ 14,251	£ 6,003	£ 0	£ 30,034

12) Related Party Transactions

No trustee nor any person connected with them received any remuneration, or claimed any expense, during the year, from this or any related Charity.

There were no Related Party Transactions in the Year.

Included within the restricted income funds are amounts totalling £11,884 which were paid out at the beginning of April 2022 in respect of holiday activities as well as food parcels provided in March 2022.

**Independent Examiner's Report to the Trustees on the Unaudited Accounts of the Charity
Mishon
For The Year Ended 31 March 2022**

We report on the financial statements of Mishon for the year ended 31 March 2022 which comprise the Statement of Financial Activities, the Balance Sheet and the related notes. These financial statements have been prepared, under the historical cost convention, and in accordance with the recommendations in Accounting and Reporting By Charities: Statement of Recommended Practice (Issued 2015), and the Financial Reporting Standard for Smaller Entities 102 (effective 2016), and the accounting policies set out therein.

Respective Responsibilities Of Trustees and Independent Examiner

As described on page 3, the trustees of the charity are responsible for the preparation of the accounts, and they consider that the audit requirement of section 144 of the Charities Act 2011 (the Act) does not apply. It is our responsibility to state, on the basis of procedures specified in the General Directions given by the Charity Commissioners under section 144 of the Act, whether particular matters have come to our attention.

Basis of Independent Examiner's Report

Our examination was carried out in accordance with the General Directions given by the Charity Commissioners.

An examination includes a review of the accounting records kept by the charity and a comparison of the accounts presented with those records. It also includes consideration of any unusual items or disclosures in the accounts, and seeking explanations from you as trustees concerning any such matters.

These procedures provide only the assurance expressed in our opinion.

The procedures undertaken do not provide all the evidence that would be required in an audit, and consequently we do not express an audit opinion on the view given by the accounts.

Opinion

In our opinion, no matter has come to our attention,

- 1) which gives us reasonable cause to believe that, in any material respect, the requirements
 - a) to keep accounting records in accordance with section 130 of the Act; and
 - b) to prepare accounts which accord with the accounting records and to comply with the accounting requirements of the 2011 Act have not been met; or
- 2) to which, in our opinion, attention should be drawn in order to enable a proper understanding of the accounts to be reached.

Date 9 January 2023

Independent Examiner
C. Rosen

**"COMPASSION MEANS
THAT YOU DO SOMETHING
TO ALLEVIATE THE
SUFFERING OF ANOTHER"**



MISHON

England & Wales - Charity number 1149271

Accounts



FIGHTING DISADVANTAGES FEEDING HOPE...

Mishon
Annual report and financial statements
31 March 2021
Charity Registration number: 1149271



2021

AT A GLANCE:

10,806

HOURS OF
VOLUNTEERING

45

DEVOTED
VOLUNTEERS

11,213

FOOD
PARCELS

HOLIDAY ACTIVITIES

CRISIS GRANTS

RESPITE BREAKS

FURNITURE /CLOTHING

EMOTIONAL THERAPY



**"BEHIND EVERY EFFECTIVE
ORGANISATION, IS A GREAT
TEAM OF PEOPLE"**

NURTURING HOPE FOR A BETTER — FUTURE —



MESSAGE FROM CHAIRMAN

Dear Colleagues

2020 was a year that will not be forgotten.

The covid19 pandemic uniquely affected children and families in different ways by disrupting routines, changing relationships and roles, altering usual childcare, school and recreational activities.

Families faced threats they had not known before through social isolation, financial and employment insecurity, housing instabilities and changes to health and social care access.

Yet, despite the challenges and at times risks involved the team at Mishon rose above it all and reached out to all those desperate for help and support.

So **thank you**—friends, volunteers and donors, we could not have done this without you. Your sheer determination to continue serving the many in need was and remains inspirational.

Looking to the future we need to assess and evaluate the best way forward. We want to put people ‘back on their feet’ and move away from regular charity daily dependence, bearing in mind the health and safety of our beneficiaries and the due diligence of our charity.

We can and we will emerge from the pandemic stronger than ever before. We must hold on tight and continue to look to the future with hope and aspiration and together we will build a **stronger better normal**.

With best wishes for a brighter future,

Mrs N Wiess

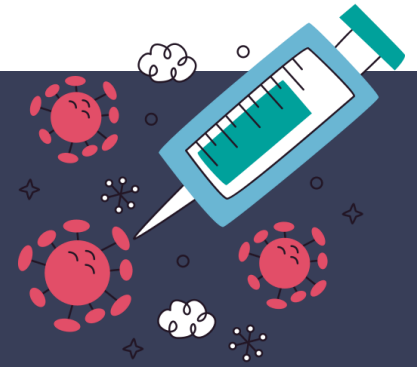
Chair of Mishon

OUR MISSION

MAKE A DIFFERENCE
TO NEEDY FAMILIES
BRINGING HOPE



OUR VISION



DESPITE THE IMPLICATIONS COVID HAS LEFT ON THE ECONOMY, OUR EMOTIONAL AND PHYSICAL HEALTH AND WELLBEING, WE LOOK TOWARDS THE FUTURE WITH HOPE AND ASPIRE TO A BRIGHTER FUTURE OF RECOVERY AND GROWTH. .



FOOD PARCELS

Covid 19 left many families struggling to make ends meet and the ability to provide basic food staples for their young families. The start of the pandemic and government regulations forced the closure of our food bank, despite this and with an increasing demand of over 80% we were able to reach out and provide food parcels consisting of fresh fruit, veg, fish, meat and grocery supplies to local families. For those who wanted to 'try and piece their lives together' again, we provided food vouchers so they were able to go out and buy food items of their choice even though they did not have the actual funds.

Committed to the health and safety of our volunteers, beneficiaries and all involved, food parcels were packed in line with government guidance with the use of PPE, maintaining social distancing and then delivered with a door to door delivery service thus minimising any social interaction.

HOLIDAY ACTIVITIES

Families from disadvantaged backgrounds can not afford basic holiday activities, trips or other. Mishon provided a range of holiday activities including:

Treasure chests: delivered to those isolating and alone bringing joy and entertainment to their homes.

Playscheme:

- *For small groups of children in line with government guidance.

- *Subsidising activities in other youth programmes working together with schools and social workers ensuring the most vulnerable children health and safety needs were met.



CRISIS GRANTS

Sometime an 'emergency item' can make or break a family. Mishon assessed each case and with the trustees' recommendation provided some with furniture, others with clothing whilst some needed emergency emotional therapy to avoid further breakdown.



HEALTHY MEALS



Those isolating, ill and the elderly were not only struggling with covid 19 symptoms. They faced the daily need for a 'healthy and nutritious meal' to aid recovery. With the help and support of local bakeries, groceries and restaurants, surplus food was collected, packed and delivered to those in need.

CLOTHING AND HOUSEHOLD HELP

For our beneficiaries a broken fridge is reason for panic. A new one is a dream for 'when I will be rich'. At Mishon, we match up and distribute both new and second hand furniture, clothes and toys ensuring the disadvantaged amongst us have basic household items.



OUR FUNDERS

Jewish Children's Holiday Fund ^{בסייד}

Founded 1888 Registered Charity No. 295361

 **Hackney**

 **THE NATIONAL LOTTERY**



Department
for Environment
Food & Rural Affairs

THE ARBIB LUCAS CHARITY

Haringey Giving



Haringey
LONDON

East End
COMMUNITY FOUNDATION

CITY BRIDGE TRUST



Board of Trustees

Mrs. Nicha Weiss
Mr. Isaac Honig
Mr. Naftoli Chaim Blau

Auditor

Carl Rosen
50 Craven Park Road
South Tottenham
London N15 6AB

Charity Office

2 Filey Avenue
London N16 6NT

Bankers

TSB
174 Clapton Common
London E5 9AQ

Registered charity name: Mishon
Charity Number: 1149271

Mishon Report of the Trustees

Reserves Policy

Free reserves of the charity stand at £21,786 as restricted monies have been received towards the end of the year for particular projects in the following year. This is lower than the anticipated level of reserves the trustees aim to maintain which is generally a level of at least six months running costs. However, in response to the pandemic felt it was sensible to provide support to beneficiaries at such difficult times rather than maintain the expected level of reserves.

Status and Administration

Mishon is constituted under a trust deed, dated 20th September 2012 and is a Registered Charity with a registered number 1149271. Recruitment and appointment of new trustees would be in line with the Trust Deed and with the consent of the trustees. The criteria set for the suitable candidate would be someone who is sensitive to the needs and demands of the organisation. There is no chief executive officer. The day-to-day affairs are undertaken by a devoted team of individuals on a voluntary basis on behalf of the trustees. All major decisions are taken collectively by the trustees and all the trustees give of their time freely. The trustees are unpaid and details of any related party transactions are disclosed as applicable in the notes to the accounts. The arrangements for setting the pay of the charity's employees is the sole domain of the trustees.

Public Benefit

The trustees confirm that they have referred to the guidance contained in the Charity Commission's general guidance on public benefit when reviewing the charity's aims and objectives and in planning future activities and setting grant making policy for the year.

Grant Making Policy

The charity is funded by donations and grants. The charity gives out crisis grants in line with the above objects. The charity paid out a total of £4988 in grants to individuals falling in line with the charity's objects.

Responsibilities of the Trustees

Charity Law requires the Trustees to prepare financial statements for each financial year which which give a true and fair view of the state of affairs of the charity as at the Balance Sheet date, and of its incoming resources, including income and expenditure for the financial year.

In preparing those financial statements, the Trustees should follow best practice and:

- Select suitable accounting policies and the apply them consistently.
- Make judgements and estimates that are reasonable and prudent.
- Follow applicable accounting standards and the Charities SORP 2015, updated May 2008 disclosing and explaining any departures in the financial statements.
- Prepare the financial statements on the going concern basis unless it is inappropriate to assume that the charity will continue in operation.

The Trustees are responsible for maintaining proper accounting records which disclose with reasonable accuracy at any time the financial position of the charity and to enable them as Trustees to ensure that the financial statements comply with the Charity Law. The Trustees are also responsible for safeguarding the charity's assets and hence for taking reasonable steps for the prevention and detection of fraud and other regularities.

Board Of Trustees

The members of the Board Of Trustees are set out on Page 1.
Approved by The Trustees of on 9 January 2022
and signed on behalf of them all.

Trustee
Mrs. Nicha Weiss

Mishon					
Statement Of Financial Activities					
For The Year Ended 31 March 2021					
	Notes	Unrestricted Funds £	Restricted Funds £	2021 Total Funds £	2020 Total Funds £
INCOMING RESOURCES					
Activities to further the Charitable Activities	2	<u>22,922</u>	<u>113,749</u>	<u>136,671</u>	<u>27,921</u>
Total Incoming Resources		22,922	113,749	136,671	27,921
RESOURCES EXPENDED					
Cost of Generating Funds		<u>0</u>	<u>0</u>	<u>0</u>	<u>404</u>
Net Incoming Resources Available For Charitable Application		22,922	113,749	136,671	27,517
Cost of Activities In Furtherance of the Charitable Activities	3	19,035	86,506	105,541	30,711
Governance Costs	5	<u>606</u>	<u>0</u>	<u>606</u>	<u>500</u>
Total Charitable Expenditure		19,641	86,506	106,147	31,211
Total Resources Expended	3	<u>19,641</u>	<u>86,506</u>	<u>106,147</u>	<u>31,615</u>
Net Movement In Funds		3,281	27,243	30,524	(3,694)
Transfer To / (From) Reserves		<u>0</u>	<u>0</u>	<u>0</u>	<u>0</u>
Net Reserves for the Year		<u>3,281</u>	<u>27,243</u>	<u>30,524</u>	<u>(3,694)</u>
Total Funds Brought Forward		18,505	0	18,505	22,199
Total Funds Carried Forward	10	<u>£ 21,786</u>	<u>£ 27,243</u>	<u>£ 49,029</u>	<u>£ 18,505</u>

Mishon			
Balance Sheet at 31 March 2021			
	Notes	2021 £	2020 £
Current Assets			
Cash at Bank and in Hand		<u>49,529</u>	<u>19,005</u>
Creditors : Amounts falling due within one year	8	<u>(500)</u>	<u>(500)</u>
Net Current Assets		<u>49,029</u>	<u>18,505</u>
Total Assets less Current Liabilities		<u>49,029</u>	<u>18,505</u>
Net Assets	9	<u>£ 49,029</u>	<u>£ 18,505</u>
Restricted Funds	10	27,243	0
Unrestricted Funds	11	<u>21,786</u>	<u>18,505</u>
Total Funds		<u>£ 49,029</u>	<u>£ 18,505</u>

Approved by the Trustees on 9 January 2022, and signed on behalf of them all.

Mrs. Nicha Weiss
Trustee

The notes on pages 6 to 8 form part of these accounts.

Mishon

Notes To The Accounts - 31 March 2021

1) Principal Accounting Policies

Basis of Accounting

These financial statements have been prepared in compliance with FRS 102, 'The Financial Reporting Standard applicable in the UK and the Republic of Ireland', the Statement of Recommended Practice applicable to charities preparing their accounts in accordance with the Financial Reporting Standard applicable in the UK and Republic of Ireland (FRS 102) (Charities SORP (FRS 102)) and the Charities Act 2011.

Cash Flow

The accounts do not include a cash flow statement because the charity as a small reporting entity is exempt from the requirement to prepare such a statement.

Donations and Fund Accounting

Donations received for the general and main purposes of the Charity is included as unrestricted funds in the Statement of Financial Activities when receivable.

Donations and Grants for activities restricted by the donors are taken to restricted funds if the wishes and conditions of the donor are legally binding on the Trustees.

Resources Expended

Management and administration costs are those incurred in connection with administration of the charity and compliance with constitutional and statutory requirements.

The irrecoverable element of VAT is included with the item of expense to which it relates.

	Unrestricted Funds	Restricted Funds	Total 2021	Unrestricted Funds	Restricted Funds	Total 2020
	£	£	£	£	£	£
2) Incoming Funds						
Donations	19,130	0	19,130	12,645	0	12,645
Fundraising Income	0		0	2,776		2,776
Job Retention Support	<u>3,792</u>	<u>0</u>	<u>3,792</u>	<u>0</u>	<u>0</u>	<u>0</u>
Total Donations and Fees	22,922	0	22,922	15,421	0	15,421
Grants Received						
Arbib Lucas		300	300		0	0
Bruce Wake		0	0		1,500	1,500
City Bridge Trust		25,000	25,000		0	0
Defra Government Grant		30,000	30,000		0	0
East End Community Fund		14,859	14,859		0	0
Edward Gostling		0	0		3,000	3,000
Haringey Giving		5,000	5,000		0	0
Henry Smith		0	0		2,150	2,150
Jewish Child Holiday Fund		3,300	3,300		3,000	3,000
London Borough of Hackney		24,150	24,150		0	0
London Borough of Haringey		1,610	1,610		0	0
National Lottery Response Fund		9,530	9,530		0	0
Respite Association		0	0		2,850	2,850
Tottenham Grant		0	0		0	0
Total Grants	<u>0</u>	<u>113,749</u>	<u>113,749</u>	<u>0</u>	<u>12,500</u>	<u>12,500</u>
Total Income Generated	£ 22,922	£ 113,749	£ 136,671	£ 15,421	£ 12,500	£ 27,921

Mishon

Notes To The Accounts - 31 March 2021

	Unrestricted Funds	Restricted Funds	Total 2021	Unrestricted Funds	Restricted Funds	Total 2020
	£	£	£	£	£	£
3) Analysis of Total Resources Expended Charitable Activities						
Cost of Activities In Furtherance of the Charitable Activities						
Charitable Activities						
Advertising	480	120	600	100	0	100
Entertainment and Trips	0	0	0	1,170	7,575	8,745
Food Parcels	8,663	76,391	85,054	2,732	420	3,152
Grants	3,288	1,700	4,988	1,945	2,555	4,500
Holiday Activities	560	4,850	5,410	0	1,950	1,950
Office Costs	115	0	115	273	0	273
Toys and Stationery	74	1,008	1,082	3,462	1,035	4,497
Volunteer Costs	60	42	102	690	0	690
Staff Costs	<u>5,795</u>	<u>2,395</u>	<u>8,190</u>	<u>6,804</u>	<u>0</u>	<u>6,804</u>
Total Charitable Activities	19,035	86,506	105,541	17,176	13,535	30,711
Total Cost of Activities In Furtherance of the Charitable Activities	<u>£ 19,035</u>	<u>£ 86,506</u>	<u>£ 105,541</u>			<u>£ 30,711</u>
Staff Costs include Payments from the Furlough Job Retention Scheme.						

4) Cost of Generating Funds		£ 0	£ 404
5) Governance Costs			
Accountancy	606		500
Bank Charges	0		0
Governance	<u>0</u>		<u>0</u>
	£ 606		£ 500

6) Taxation

The Charity is exempt from taxation on its charitable activities.

7) The average number of Employees during the year, on a full time equivalent basis was		2021	2020
		<u>2</u>	<u>1</u>
No Employee was paid above £60,000 per year.			

8) Related Party Transactions

No trustee nor any person connected with them received any remuneration, or claimed any expense, during the year, from this or any related Charity.
There were no Related Party Transactions in the Year.

Mishon
Notes To The Accounts - 31 March 2021

Accountants Report to the Trustees on the Unaudited Accounts of the Charity
Mishon
For The Year Ended 31 March 2021

8) Creditors: Amounts falling due within one year

	2021	2020
	£	£
Accruals	500	500
	<u>£ 500</u>	<u>£ 500</u>

9) Net Assets of The Charity's Funds

	Fixed Assets	Net Current Assets	Long Term Liabilities	Fund Balances
	£	£	£	£
Restricted Funds	0	27,243	0	27,243
Unrestricted Funds	0	21,786	0	21,786
Total Funds	£ 0	£ 49,029	£ 0	£ 49,029

We report on the financial statements of Mishon for the year ended 31 March 2021 which comprise the Statement of Financial Activities, the Balance Sheet and the related notes. These financial statements have been prepared, under the historical cost convention, and in accordance with the recommendations in Accounting and Reporting By Charities: Statement of Recommended Practice (Issued 2015), and the Financial Reporting Standard for Smaller Entities 102 (effective 2016), and the accounting policies set out therein.

Respective Responsibilities Of Trustees and Reporting Accountants

As described on page 3, the trustees of the charity are responsible for the preparation of the accounts, and they consider that the audit requirement of section 144 of the Charities Act 2011 (the Act) does not apply. It is our responsibility to state, on the basis of procedures specified in the General Directions given by the Charity Commissioners under section 249 of the Act, whether particular matters have come to our attention.

Basis of Accountant's Report

Our examination was carried out in accordance with the General Directions given by the Charity Commissioners.

An examination includes a review of the accounting records kept by the charity and a comparison of the accounts presented with those records. It also includes consideration of any unusual items or disclosures in the accounts, and seeking explanations from you as trustees concerning any such matters.

These procedures provide only the assurance expressed in our opinion.

The procedures undertaken do not provide all the evidence that would be required in an audit, and consequently we do not express an audit opinion on the view given by the accounts.

Opinion

In our opinion, no matter has come to our attention,

- 1) which gives us reasonable cause to believe that, in any material respect, the requirements
 - a) to keep accounting records in accordance with section 130 of the Act; and
 - b) to prepare accounts which accord with the accounting records and to comply with the accounting requirements of the 2011 Act have not been met; or
- 2) to which, in our opinion, attention should be drawn in order to enable a proper understanding of the accounts to be reached.

Reporting Accountant

C. Rosen

Date 9 January 2022

10) Restricted Funds : Movements In The Year

Balance at 31 March 2020	Income	Expended	Transfer To /(From) Reserves	Balance at 31 March 2021
£	£	£	£	£
0	113,749	86,506	0	27,243
£ 0	£ 113,749	£ 86,506	£ 0	£ 27,243

11) Unrestricted Funds : Movements In The Year

Balance at 31 March 2020	Income	Expended	Transfer To /(From) Reserves	Balance at 31 March 2021
£	£	£	£	£
18,505	22,922	19,641	0	21,786
£ 18,505	£ 22,922	£ 19,641	£ 0	£ 21,786

12) Related Party Transactions

No trustee nor any person connected with them received any remuneration, or claimed any expense, during the year, from this or any related Charity.

There were no Related Party Transactions in the Year.

"COMPASSION MEANS
that you do something
to alleviate the suffering
OF ANOTHER."

GIVE

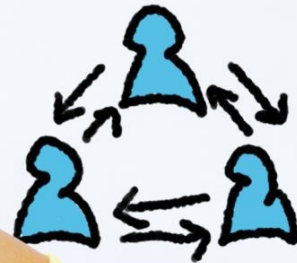


CHARITY

DONATE

Help

VOLUNTEER



SAVING

ment

