



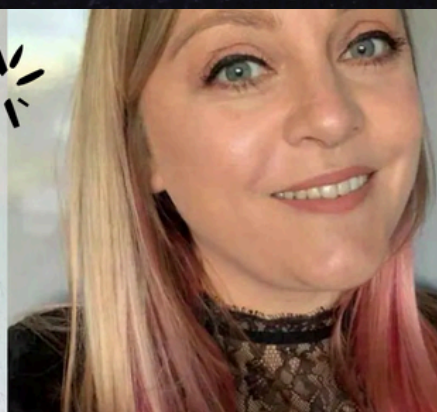
ANNUAL REPORT

FOR PERIOD ENDING MARCH 2025



BOARD OF TRUSTEES

- **Mark Freeman**, Founder
- **Craig Hargreaves**, Chair
- **Kerry-Ann Jervis-Scott**, Treasurer
- **Claire Pearce**
- **Sara Hawkins**
- **John Cass**
- **Natashia Cedeno**



MESSAGE FROM THE CHAIR & CEO



It has been another challenging year for the charity sector, with a turbulent external market forcing many of us to focus on managing our rising costs, and building our long-term financial stability. At times like this, it is vital that we work harder than ever to support our beneficiaries – and we're proud to say that The Robin Cancer Trust has never been more dedicated to the germ cell cancer community.

2024 saw the launch of our podcast, Thrive Against Cancer, in which we give a voice to the cancer community. Every week, our incredible guests share their stories, lessons, and advice; many listeners have already spoken to us about how much these stories have helped them, so we'd like to say a huge thank you to all of our guests this year. In 2025, we are looking to grow the podcast further, with some amazing guests lined up, so watch this space!

This was also the year that we secured the funding needed to expand our community team nationally. This means we can continue to deliver our life-saving talks to new communities across the UK, engaging new audiences and raising awareness, keeping our culture and values at the heart of everything we do.

Our team has expanded further this year, with the addition of a Head of Operations role, which has already made a huge difference to our operational efficiency. We've also recognised the vital importance of clinical expertise within the charity, and to that end we've not only recruited a Clinical Nurse Specialist into the team, but also onto our Board of Trustees. This expertise will help ensure that The Robin Cancer Trust continues to engage with the cancer community in ways that really make a difference.

We'd like to offer my sincere thanks to our amazing staff team and Board of Trustees, whose passion and hard work remains a constant source of inspiration. Most importantly, we'd like to thank all of our donors, fundraisers, volunteers, and ambassadors for everything you do in supporting The Robin Cancer Trust and the entire cancer community. You are all amazing and we couldn't exist without you.

2025 promises to be another exciting year – we look forward to seeing what we can all achieve together.

**Craig Hargreaves, Chair
Toby Freeman, CEO**





EDUCATE



This year we continued on our mission to reach **thousands of students** with our life-saving educational talks by continuing to attend schools, colleges and universities across the region with our fun and engaging talks.

We delivered our Cancer Education Programme both in-person and virtually to make our information as accessible as possible. We even had our life saving awareness leaflets translated into 8 different languages!

Our Freshers Fair program remains a huge success and saw us attending 6 fairs, expanding our reach into Cambridge, Suffolk and Hertfordshire as well as local Essex Universities of Chelmsford and Colchester. With our attendance growing year on year, we are delivering our testicular and ovarian cancer awareness information to **thousands of young people** at a vital time in their lives. We continue to develop our relations with these students by onboarding student Charity Champions.

We have expanded our reach with a new Community Engagement Officer located in the East Midlands, helping us to engage with more people and spread the message further!





ENGAGE



Through our engaging awareness raising campaigns, we aim to break the stigma of talking about germ cell cancers. We work to raise awareness of the potential signs and symptoms and encourage people to contact their GP promptly to enable earlier diagnosis.

We continue to grow our nationally recognised cancer awareness campaigns – #TalkingBollocks and #NotOvaryacting – working with national partners to reach as many young people as possible.

These campaigns work to highlight the importance of early detection, promote awareness of the signs and symptoms, and tackle embarrassment experienced by young men and women which can prevent or delay them in seeking treatments.

We reached millions of young adults online and tens of thousand of people in the community, with our award-winning #TalkingBollocks and #NotOvaryacting campaigns





EMPOWER



Thanks to the amazing support received, the Thriver Program continues to grow across the UK, providing free cancer support packs to those who need them most. We're especially grateful to our dedicated partners on the front lines of healthcare—in hospitals and community organisations—who help us deliver these vital resources to the germ cell cancer community.

Alongside this, we have our dedicated Thriver resources on our website to help people navigate their journey and our blog series has allowed our community to share their stories, raw and uncut.

- This year, we provided Thriver packs to 51 people, helping support our community during the most difficult time of their life.
- We recruited a dedicated Clinical Nurse Specialist to create, manage and support online germ cell cancer community forums and put lived-experience at the forefront of our support programmes.
- We launched the Thrive Against Cancer podcast – giving a voice to the cancer community. We host open and honest conversations with people affected by cancer, their loved ones, health professionals and the organisations and charities that support them. We have seen some common themes evolve that we hope to continue to explore.



WHAT DO OUR GUESTS SAY?



THE POWER OF LISTENING TO YOUR BODY

A recurring piece of advice is to trust your instincts – everyone who pushed for answers found diagnoses that were otherwise missed.



NAVIGATING HEALTHCARE

A recurring piece of advice is to trust your instincts – everyone who pushed for answers found diagnoses that were otherwise missed.

EMOTIONAL AND PSYCHOLOGICAL IMPACT

Cancer is not just physical – there's deep emotional trauma, grief, fear of recurrence and mental health challenges.

LIFE AFTER DIAGNOSIS/ A NEW NORMAL



Life is divided into before cancer and after cancer.

WHAT ADVICE DO THEY SHARE?



BODY IMAGE AND IDENTITY

Changes like hair loss, mastectomy, stomas, or infertility deeply affect body image and confidence.



RESILIENCE AND MINDSET SHIFTS

Many spoke of choosing hope over fear, using humor, faith or determination to survive and thrive.

ADVOCACY LEGACY AND PURPOSE

Most guests became advocates, founders or storytellers, using their experience to support others.

SUPPORT SYSTEMS: FAMILY, FRIENDS AND COMMUNITY



The importance of emotional and practical support from loved ones, peers and community organisations.



EVENTS



We've had another amazing year of events – and we're so proud of every single one of our supporters who organised, entered or fundraised in aid of us!

Our flagship community event, the Colchester Half Marathon, hit a record high this year—with over 3,000 incredible runners hitting the streets to raise vital funds and awareness.

Our events calendar is bigger and better than ever, offering something for everyone – from scenic walks and epic treks to adrenaline-filled skydives. Behind every step, stride and leap is our amazing staff team, making sure every supporter feels celebrated and supported on their journey.

- Thank you to all our amazing fundraisers, donors, partners and supporters for helping us raise vital funds for germ cell cancer awareness, education and support!





THE NEXT 12 MONTHS



Our organisational goals for the next 12 months are to increase the reach and impact of our life-saving cancer campaigns and to expand our education, awareness and support programmes so that we can support as many people as possible across the UK!

To achieve this, we will be focusing on four key areas:



EDUCATION

The next steps in our Cancer Education Programme will be to expand our reach and staff base across the country even further into the North East of England, locating staff and cancer education at the heart of communities who need it most. It will also see us launch our truly amazing cancer education video getting our key messages to even more audiences.



AWARENESS

We will continue working closely with partners to create diverse, inclusive and representative resources, to help us achieve our goal of 'awareness for all' – helping us reach communities and audiences all across the UK.

SUPPORT

As part of our work to advocate for and empower our community, we will share resources that were co-created by our community to help those affected by germ cell cancer, with the help of our recently appointed Clinical Nurse Specialists and the voice of the community with our podcast.



INCOME GENERATION



Sustainable growth and strong partnerships are essential to providing life-saving support to our community.

By fundraising strategically, we're strengthening our future. Partnerships are being built throughout the UK as we expand into more regions. It is an honour to have secured places for the next 4 years for the London Marathon, which will not only provide income but also raise awareness and foster a sense of community. Additionally, our podcast listenership and community continue to grow, allowing us to diversify our income.

While there are far too many people to thank individually, we would like to thank every single donor, fundraiser, volunteer, business, organisation and partner who has supported The Robin Cancer Trust in the past year. Thanks to you we are able to continue to support the UK's germ cell cancer community and to deliver life-saving cancer awareness, education and support to young adults all across the UK..



THANK YOU!

**THANKS TO YOU WE ARE ABLE TO CONTINUE TO SUPPORT THE
UK'S GERM CELL CANCER COMMUNITY – AND TO DELIVER
LIFE-SAVING CANCER AWARENESS, EDUCATION AND
SUPPORT TO YOUNG ADULTS ACROSS THE UK.**



**we
save
lives**

Stay in Touch

 @rctcharity

 The Robin Cancer Trust

 @rctcharity

 www.robincancertrust.org



Charity registration number 1148999 (England and Wales)

THE ROBIN CANCER TRUST
ANNUAL REPORT AND UNAUDITED FINANCIAL STATEMENTS
FOR THE YEAR ENDED 31 MARCH 2025

THE ROBIN CANCER TRUST



LEGAL AND ADMINISTRATIVE INFORMATION

Trustees	Mr M Freeman (Co-Founder)	
	Mr C Hargreaves (Chair)	
	Ms K Jervis-Scott (Treasurer)	
	Mrs S Hawkins	
	Ms N Cedenó	(Appointed 14 May 2024)
	Ms R Taylor	(Appointed 9 December 2025)
Chief Executive Officer	Mr T Freeman	
Charity number	1148999	
Principal address	29 Queens Road Wivenhoe Colchester CO7 9JJ	
Independent examiner	Daniel Insley BA FCA c/o The Old Exchange 64 West Stockwell Street Colchester Essex CO1 1HE	
Bankers	Metro Bank PLC One Southampton Row London WC1B 5HA	

THE ROBIN CANCER TRUST



CONTENTS

	Page
Trustees' report	1 - 3
Independent examiner's report	4
Statement of financial activities	5
Balance sheet	6
Notes to the financial statements	7 - 16

TRUSTEES' REPORT

FOR THE YEAR ENDED 31 MARCH 2025

The trustees present their annual report and financial statements for the year ended 31 March 2025.

The financial statements have been prepared in accordance with the accounting policies set out in note 1 to the financial statements and comply with the charity's governing document, the Charities Act 2011 and "Accounting and Reporting by Charities: Statement of Recommended Practice applicable to charities preparing their accounts in accordance with the Financial Reporting Standard applicable in the UK and Republic of Ireland (FRS 102)" (effective 1 January 2019).

Objectives and activities

Our Vision

To stop young adults dying from germ cell cancer.

Our Mission

To reach every young person in the UK with our life-saving cancer campaigns.

Our Hope

No other family has to go through what we did.

Our Impact

We educate young people to give them the best chance of surviving germ cell cancer.

We engage young people with humour to break the stigma of talking about germ cell cancer.

We empower young people effected by germ cell cancer to thrive.

Public benefit

The trustees have paid due regard to guidance issued by the Charity Commission in deciding what activities the charity should undertake.

Achievements and performance

Significant activities and achievements against objectives

Over the course of the year we undertook countless activities to raise awareness of germ cell cancer and raise much needed funds with the help of our supporters, volunteers and team members.

Education

Alongside our in-person educational talks, we have developed a library of free digital resources for educational establishments to use for their students - allowing us to reach a national audience with our life-saving message.

Awareness

Our mantra is "awareness for all" because we believe everyone deserves access to our life-saving cancer campaigns.

Over the past 12 months we have created, curated, and collaborated with partners so that we can reach as many people and communities as possible with our "# Talking Bollocks" and "# NotOvaryActing" cancer campaigns.

This year we launched the Thrive Against Cancer podcast - giving a voice to the cancer community.

THE ROBIN CANCER TRUST



TRUSTEES' REPORT (CONTINUED)

FOR THE YEAR ENDED 31 MARCH 2025

Support

Our "Thrivers" cancer support packs have continued to help those going through the hardest time of their lives.

We have continued to work alongside our community to empower those people affected by germ cell cancer to thrive. Listening to the experience of others to better shape our services and programmes so we can better serve our beneficiaries and have a positive impact on their lives.

This year we have also recruited a dedicated Clinical Nurse Specialist to create, manage, and support online germ cell cancer community forums and put lived-experience at the forefront of our support programmes.

Financial review

At the 31 March 2025 the total reserves of the Charity were £136,837 (2024: £105,938), of which £106,339 (2024: £74,852) were unrestricted funds, and £30,498 (2024: £31,086) were restricted funds.

Reserves policy

It is the policy of the charity that unrestricted funds which have not been designated for a specific use should be maintained at a level equivalent to between three and six months expenditure. The trustees consider that reserves at this level will ensure that, in the event of a significant drop in funding, they will be able to continue the charity's current activities while consideration is given to ways in which additional funds may be raised. This level of reserves has been maintained throughout the year.

Structure, governance and management

The trustees who served during the year and up to the date of signature of the financial statements were:

Mr M Freeman (Co-Founder)

Mr C Hargreaves (Chair)

Ms K Jarvis-Scott (Treasurer)

Mrs C Pearce

(Resigned 15 April 2025)

Mrs S Hawkins

Mr J Cass

(Resigned 15 July 2025)

Ms N Cedeno

(Appointed 14 May 2024)

Ms R Taylor

(Appointed 9 December 2025)

Recruitment and appointment of trustees

The management of the Charity is the responsibility of the Trustees who are elected under the terms of the Trust Deed.

The Board of Trustees has the power to appoint and remove trustees on a majority basis, with the Chair of Trustees having the casting vote where necessary.

Organisational structure

The Board of Trustees have oversight management of the Charity, delegating the operational management to the CEO who is supported by a Community Manager, and marketing, social media, and communications staff. Financial operations are managed by the Treasurer with the support of the Head of Operations.

THE ROBIN CANCER TRUST



TRUSTEES' REPORT (CONTINUED) *FOR THE YEAR ENDED 31 MARCH 2025*

The trustees' report was approved by the Board of Trustees.

A handwritten signature in black ink, appearing to read 'C Hargreaves'.

Mr C Hargreaves (Chair)

9 December 2025

THE ROBIN CANCER TRUST



INDEPENDENT EXAMINER'S REPORT

TO THE TRUSTEES OF THE ROBIN CANCER TRUST

I report to the trustees on my examination of the financial statements of The Robin Cancer Trust (the charity) for the year ended 31 March 2025.

Responsibilities and basis of report

As the trustees of the charity you are responsible for the preparation of the financial statements in accordance with the requirements of the Charities Act 2011.

I report in respect of my examination of the charity's financial statements carried out under section 145 of the Charities Act 2011. In carrying out my examination I have followed the Directions given by the Charity Commission under section 145(5)(b) of the Charities Act 2011.

Independent examiner's statement

Since the charity's gross income exceeded £250,000, the independent examiner must be a member of a body listed in section 145 of the Charities Act 2011. I confirm that I am qualified to undertake the examination because I am a member of The Institute of Chartered Accountants in England and Wales, which is one of the listed bodies.

Your attention is drawn to the fact that the charity has prepared the financial statements in accordance with the relevant version of the Statement of Recommended Practice applicable to charities preparing their financial statements in accordance with the Financial Reporting Standard applicable in the UK and Republic of Ireland (FRS 102) in preference to the Accounting and Reporting by Charities: Statement of Recommended Practice issued on 1 April 2005 which is referred to in the extant regulations but has now been withdrawn. I understand that this has been done in order for the financial statements to provide a true and fair view in accordance with UK Generally Accepted Accounting Practice.

I have completed my examination. I confirm that no matters have come to my attention in connection with the examination giving me cause to believe that in any material respect:

- 1 accounting records were not kept in respect of the charity as required by section 130 of the Charities Act 2011.
- 2 the financial statements do not accord with those records; or
- 3 the financial statements do not comply with the applicable requirements concerning the form and content of financial statements set out in the Charities (Accounts and Reports) Regulations 2008 other than any requirement that the financial statements give a true and fair view, which is not a matter considered as part of an independent examination.

I have no concerns and have come across no other matters in connection with the examination to which attention should be drawn in this report in order to enable a proper understanding of the financial statements to be reached.

Daniel Insley BA FCA
c/o The Old Exchange
64 West Stockwell Street
Colchester
Essex
CO1 1HE
9 December 2025

THE ROBIN CANCER TRUST



STATEMENT OF FINANCIAL ACTIVITIES INCLUDING INCOME AND EXPENDITURE ACCOUNT

FOR THE YEAR ENDED 31 MARCH 2025

		Unrestricted funds 2025 £	Restricted funds 2025 £	Total 2025 £	Unrestricted funds 2024 £	Restricted funds 2024 £	Total 2024 £
	Notes						
Income from:							
Donations and legacies	3	291,449	69,665	361,114	315,419	57,142	372,561
Investments	4	678	-	678	762	-	762
Total income		<u>292,127</u>	<u>69,665</u>	<u>361,792</u>	<u>316,181</u>	<u>57,142</u>	<u>373,323</u>
Expenditure on:							
Raising funds	5	17,643	-	17,643	15,427	-	15,427
Charitable activities	6	242,997	70,253	313,250	279,569	44,297	323,866
Total expenditure		<u>260,640</u>	<u>70,253</u>	<u>330,893</u>	<u>294,996</u>	<u>44,297</u>	<u>339,293</u>
Net income/(expenditure) and movement in funds		31,487	(588)	30,899	21,185	12,845	34,030
Reconciliation of funds:							
Fund balances at 1 April 2024		<u>74,852</u>	<u>31,086</u>	<u>105,938</u>	<u>53,667</u>	<u>18,241</u>	<u>71,908</u>
Fund balances at 31 March 2025		<u>106,339</u>	<u>30,498</u>	<u>136,837</u>	<u>74,852</u>	<u>31,086</u>	<u>105,938</u>

The statement of financial activities includes all gains and losses recognised in the year. All income and expenditure derive from continuing activities.

THE ROBIN CANCER TRUST



BALANCE SHEET

AS AT 31 MARCH 2025

		2025		2024	
	Notes	£	£	£	£
Fixed assets					
Tangible assets	12		4,053		1,099
Current assets					
Debtors	13	11,071		17,303	
Cash at bank and in hand		144,364		149,557	
		155,435		166,860	
Creditors: amounts falling due within one year	14	(22,651)		(62,021)	
Net current assets			132,784		104,839
Total assets less current liabilities			136,837		105,938
The funds of the charity					
Restricted income funds	16	30,498		31,086	
Unrestricted funds	17	106,339		74,852	
		136,837		105,938	

The financial statements were approved by the trustees on 9 December 2025

Mr C Hargreaves (Chair)

NOTES TO THE FINANCIAL STATEMENTS

FOR THE YEAR ENDED 31 MARCH 2025

1 Accounting policies

Charity information

The Robin Cancer Trust is a charity, registered with the Charity Commission for England and Wales and is regulated by the Trust Deed dated 14 September 2012.

1.1 Accounting convention

The financial statements have been prepared in accordance with the charity's governing document, the Charities Act 2011, FRS 102 "The Financial Reporting Standard applicable in the UK and Republic of Ireland" and the Charities SORP "Accounting and Reporting by Charities: Statement of Recommended Practice applicable to charities preparing their accounts in accordance with the Financial Reporting Standard applicable in the UK and Republic of Ireland (FRS 102)". The charity is a Public Benefit Entity as defined by FRS 102.

The charity has taken advantage of the provisions in the SORP for charities not to prepare a statement of cash flows.

The financial statements have departed from the Charities (Accounts and Reports) Regulations 2008 only to the extent required to provide a true and fair view. This departure has involved following the Statement of Recommended Practice for charities applying FRS 102 rather than the version of the Statement of Recommended Practice which is referred to in the Regulations but which has since been withdrawn.

The financial statements are prepared in sterling, which is the functional currency of the charity. Monetary amounts in these financial statements are rounded to the nearest £.

The financial statements have been prepared under the historical cost convention. The principal accounting policies adopted are set out below.

1.2 Going concern

At the time of approving the financial statements, the trustees have a reasonable expectation that the charity has adequate resources to continue in operational existence for the foreseeable future. Thus the trustees continue to adopt the going concern basis of accounting in preparing the financial statements.

1.3 Charitable funds

Unrestricted funds are available for use at the discretion of the trustees in furtherance of their charitable objectives.

Restricted funds are subject to specific conditions by donors or grantors as to how they may be used. The purposes and uses of the restricted funds are set out in the notes to the financial statements.

1.4 Income

Income is recognised when the charity is legally entitled to it after any performance conditions have been met, the amounts can be measured reliably, and it is probable that income will be received.

Cash donations are recognised on receipt. Other donations are recognised once the charity has been notified of the donation, unless performance conditions require deferral of the amount. Income tax recoverable in relation to donations received under Gift Aid or deeds of covenant is recognised at the time of the donation.

Legacies are recognised on receipt or otherwise if the charity has been notified of an impending distribution, the amount is known, and receipt is expected. If the amount is not known, the legacy is treated as a contingent asset.

NOTES TO THE FINANCIAL STATEMENTS (CONTINUED)

FOR THE YEAR ENDED 31 MARCH 2025

1 Accounting policies

(Continued)

1.5 Expenditure

Expenditure is recognised once there is a legal or constructive obligation to transfer economic benefit to a third party, it is probable that a transfer of economic benefits will be required in settlement, and the amount of the obligation can be measured reliably.

Expenditure is classified by activity. The costs of each activity are made up of the total of direct costs and shared costs, including support costs involved in undertaking each activity. Direct costs attributable to a single activity are allocated directly to that activity. Shared costs which contribute to more than one activity and support costs which are not attributable to a single activity are apportioned between those activities on a basis consistent with the use of resources. Central staff costs are allocated on the basis of time spent, and depreciation charges are allocated on the portion of the asset's use.

1.6 Tangible fixed assets

Tangible fixed assets are initially measured at cost and subsequently measured at cost or valuation, net of depreciation and any impairment losses.

Depreciation is recognised so as to write off the cost or valuation of assets less their residual values over their useful lives on the following bases:

Plant and equipment	20% Reducing Balance
Fixtures and fittings	3 Year Straight Line
Computers	3 Year Straight Line

The gain or loss arising on the disposal of an asset is determined as the difference between the sale proceeds and the carrying value of the asset, and is recognised in the statement of financial activities.

1.7 Impairment of fixed assets

At each reporting end date, the charity reviews the carrying amounts of its tangible assets to determine whether there is any indication that those assets have suffered an impairment loss. If any such indication exists, the recoverable amount of the asset is estimated in order to determine the extent of the impairment loss (if any).

1.8 Cash and cash equivalents

Cash and cash equivalents include cash in hand, deposits held at call with banks, other short-term liquid investments with original maturities of three months or less, and bank overdrafts. Bank overdrafts are shown within borrowings in current liabilities.

NOTES TO THE FINANCIAL STATEMENTS (CONTINUED)

FOR THE YEAR ENDED 31 MARCH 2025

1 Accounting policies

(Continued)

1.9 Financial instruments

The charity has elected to apply the provisions of Section 11 'Basic Financial Instruments' and Section 12 'Other Financial Instruments Issues' of FRS 102 to all of its financial instruments.

Financial instruments are recognised in the charity's balance sheet when the charity becomes party to the contractual provisions of the instrument.

Financial assets and liabilities are offset, with the net amounts presented in the financial statements, when there is a legally enforceable right to set off the recognised amounts and there is an intention to settle on a net basis or to realise the asset and settle the liability simultaneously.

Basic financial instruments are initially recognised at transaction value and subsequently measured at amortised cost. Financial assets comprise cash at bank and in hand, together with trade and other debtors. A specific provision is made for debts for which recoverability is in doubt. Cash at bank and in hand is defined as all cash held in instant access bank accounts and used as working capital. Financial liabilities held at amortised cost comprise all creditors except social security and other taxes, deferred income and provisions.

1.10 Employee benefits

The cost of any unused holiday entitlement is recognised in the period in which the employee's services are received.

Termination benefits are recognised immediately as an expense when the charity is demonstrably committed to terminate the employment of an employee or to provide termination benefits.

1.11 Retirement benefits

Payments to defined contribution retirement benefit schemes are charged as an expense as they fall due.

2 Critical accounting estimates and judgements

In the application of the charity's accounting policies, the trustees are required to make judgements, estimates and assumptions about the carrying amount of assets and liabilities that are not readily apparent from other sources. The estimates and associated assumptions are based on historical experience and other factors that are considered to be relevant. Actual results may differ from these estimates.

The estimates and underlying assumptions are reviewed on an ongoing basis. Revisions to accounting estimates are recognised in the period in which the estimate is revised where the revision affects only that period, or in the period of the revision and future periods where the revision affects both current and future periods.

THE ROBIN CANCER TRUST



NOTES TO THE FINANCIAL STATEMENTS (CONTINUED)

FOR THE YEAR ENDED 31 MARCH 2025

3 Donations and legacies

	Unrestricted funds	Restricted funds	Total	Unrestricted funds	Restricted funds	Total
	2025	2025	2025	2024	2024	2024
	£	£	£	£	£	£
Donations and gifts	205,296	69,665	274,961	268,661	57,142	325,803
Other Grant Income	69,665	-	69,665	46,082	-	46,082
Gift Aid	16,488	-	16,488	676	-	676
	<u>291,449</u>	<u>69,665</u>	<u>361,114</u>	<u>315,419</u>	<u>57,142</u>	<u>372,561</u>

4 Income from investments

	Unrestricted funds 2025 £	Unrestricted funds 2024 £
Interest receivable	<u>678</u>	<u>762</u>

THE ROBIN CANCER TRUST



NOTES TO THE FINANCIAL STATEMENTS (CONTINUED)

FOR THE YEAR ENDED 31 MARCH 2025

5 Raising funds

	Unrestricted funds	Unrestricted funds
	2025	2024
	£	£
<u>Fundraising and publicity</u>		
Seeking donations, grants and legacies	1,060	7,005
Advertising	16,583	8,422
	<hr/>	<hr/>
Fundraising and publicity	17,643	15,427
	<hr/>	<hr/>
	17,643	15,427
	<hr/>	<hr/>

6 Expenditure on charitable activities

	Charitable Activities	Charitable Activities
	2025	2024
	£	£
Direct costs		
Staff costs	184,974	136,240
Depreciation and impairment	1,009	450
Staff and Other Overheads	92,216	140,967
	<hr/>	<hr/>
	278,199	277,657
	<hr/>	<hr/>
Share of support and governance costs (see note 7)		
Support	25,270	23,859
Governance	9,781	22,350
	<hr/>	<hr/>
	313,250	323,866
	<hr/>	<hr/>
Analysis by fund		
Unrestricted funds	242,997	279,569
Restricted funds	70,253	44,297
	<hr/>	<hr/>
	313,250	323,866
	<hr/>	<hr/>

THE ROBIN CANCER TRUST



NOTES TO THE FINANCIAL STATEMENTS (CONTINUED)

FOR THE YEAR ENDED 31 MARCH 2025

7 Support costs allocated to activities

	2025	2024
	£	£
Insurance	374	271
It Software, Telephone & Consumables	2,549	1,927
Office Equipment & Consumables	3,192	6,502
Rent	2,038	2,229
Repairs	522	510
Postage, Freight & Courier	708	817
General Expenses	1,083	625
Travel	6,432	2,667
Bank Charges	8,372	8,311
Governance costs	9,781	22,350
	<u>35,051</u>	<u>46,209</u>
Analysed between:		
Charitable Activities	<u>35,051</u>	<u>46,209</u>

8 Net movement in funds

	2025	2024
	£	£
The net movement in funds is stated after charging/ (crediting):		
Fees payable for the independent examination of the charity's financial statements	1,872	1,764
Depreciation of owned tangible fixed assets	1,009	450
	<u>2,881</u>	<u>2,214</u>

9 Trustees

None of the trustees (or any persons connected with them) received any remuneration during the year. (2024-one trustee reimbursed £76 for travelling expenses).

10 Employees

The average monthly number of employees during the year was:

2025	2024
Number	Number
7	4
<u>7</u>	<u>4</u>

THE ROBIN CANCER TRUST



NOTES TO THE FINANCIAL STATEMENTS (CONTINUED)

FOR THE YEAR ENDED 31 MARCH 2025

10 Employees (Continued)

Employment costs	2025 £	2024 £
Wages and salaries	170,516	127,731
Social security costs	10,307	5,723
Other pension costs	4,151	2,786
	<u>184,974</u>	<u>136,240</u>

There were no employees whose annual remuneration was more than £60,000.

11 Taxation

The charity is exempt from tax on income and gains falling within section 505 of the Taxes Act 1988 or section 252 of the Taxation of Chargeable Gains Act 1992 to the extent that these are applied to its charitable objects.

12 Tangible fixed assets

	Plant and equipment £	Fixtures and fittings £	Computers £	Total £
Cost				
At 1 April 2024	-	365	1,376	1,741
Additions	567	-	3,395	3,962
	<u>567</u>	<u>365</u>	<u>4,771</u>	<u>5,703</u>
At 31 March 2025	567	365	4,771	5,703
Depreciation and impairment				
At 1 April 2024	-	136	505	641
Depreciation charged in the year	23	122	864	1,009
	<u>23</u>	<u>258</u>	<u>1,369</u>	<u>1,650</u>
At 31 March 2025	23	258	1,369	1,650
Carrying amount				
At 31 March 2025	<u>544</u>	<u>107</u>	<u>3,402</u>	<u>4,053</u>
At 31 March 2024	<u>-</u>	<u>229</u>	<u>870</u>	<u>1,099</u>

THE ROBIN CANCER TRUST



NOTES TO THE FINANCIAL STATEMENTS (CONTINUED)

FOR THE YEAR ENDED 31 MARCH 2025

13 Debtors

	2025	2024
	£	£
Amounts falling due within one year:		
Trade debtors	135	5,000
Other debtors	1,524	12,303
Prepayments and accrued income	9,412	-
	<u>11,071</u>	<u>17,303</u>

14 Creditors: amounts falling due within one year

	2025	2024
	£	£
Other taxation and social security	4,303	2,490
Trade creditors	10,071	50,800
Other creditors	6,079	5,203
Accruals and deferred income	2,198	3,528
	<u>22,651</u>	<u>62,021</u>

15 Retirement benefit schemes

	2025	2024
	£	£
Defined contribution schemes		
Charge to profit or loss in respect of defined contribution schemes	4,151	2,786
	<u>4,151</u>	<u>2,786</u>

The charity operates a defined contribution pension scheme for all qualifying employees. The assets of the scheme are held separately from those of the charity in an independently administered fund.

16 Restricted funds

The restricted funds of the charity comprise the unexpended balances of donations and grants held on trust subject to specific conditions by donors as to how they may be used.

At 1 April 2024	Incoming resources	Resources expended	At 31 March 2025
£	£	£	£
31,086	69,665	(70,253)	30,498
<u>31,086</u>	<u>69,665</u>	<u>(70,253)</u>	<u>30,498</u>

THE ROBIN CANCER TRUST



NOTES TO THE FINANCIAL STATEMENTS (CONTINUED)

FOR THE YEAR ENDED 31 MARCH 2025

16 Restricted funds (Continued)

Previous period:	At 1 April 2023	Incoming resources	Resources expended	At 31 March 2024
	£	£	£	£
	18,241	57,142	(44,297)	31,086
	<u> </u>	<u> </u>	<u> </u>	<u> </u>

17 Unrestricted funds

The unrestricted funds of the charity comprise the unexpended balances of donations and grants which are not subject to specific conditions by donors and grantors as to how they may be used. These include designated funds which have been set aside out of unrestricted funds by the trustees for specific purposes.

	At 1 April 2024	Incoming resources	Resources expended	At 31 March 2025
	£	£	£	£
General funds	74,852	292,127	(260,640)	106,339
	<u> </u>	<u> </u>	<u> </u>	<u> </u>

Previous period:	At 1 April 2023	Incoming resources	Resources expended	At 31 March 2024
	£	£	£	£
General funds	53,667	316,181	(294,996)	74,852
	<u> </u>	<u> </u>	<u> </u>	<u> </u>

18 Analysis of net assets between funds

	Unrestricted funds	Restricted funds	Total
	2025	2025	2025
	£	£	£
At 31 March 2025:			
Tangible assets	4,053	-	4,053
Current assets/(liabilities)	102,286	30,498	132,784
	<u> </u>	<u> </u>	<u> </u>
	106,339	30,498	136,837
	<u> </u>	<u> </u>	<u> </u>

THE ROBIN CANCER TRUST



NOTES TO THE FINANCIAL STATEMENTS (CONTINUED)

FOR THE YEAR ENDED 31 MARCH 2025

18 Analysis of net assets between funds

(Continued)

	Unrestricted funds 2024 £	Restricted funds 2024 £	Total 2024 £
At 31 March 2024:			
Tangible assets	1,099	-	1,099
Current assets/(liabilities)	73,753	31,086	104,839
	<u>74,852</u>	<u>31,086</u>	<u>105,938</u>

19 Related party transactions

There were no disclosable related party transactions during the year (2024 - none).

The Robin Cancer Trust Final Accounts Year ended 31 March 2025


Final Audit Report


2025-12-13


Created:	2025-12-12
By:	Daniel Insley (dinsley@streetsweb.co.uk)
Status:	Signed
Transaction ID:	CBJCHBCAABAA2wF02PTYQ2d7Wt4q1i9sgIYYN1OZYN3A


"The Robin Cancer Trust Final Accounts Year ended 31 March 2025" History

 Document created by Daniel Insley (dinsley@streetsweb.co.uk)
2025-12-12 - 16:57:05 GMT

 Document emailed to Craig Hargreaves (craig@therobincancertrust.org) for signature
2025-12-12 - 16:57:50 GMT

 Email viewed by Craig Hargreaves (craig@therobincancertrust.org)
2025-12-13 - 16:16:02 GMT

 Document e-signed by Craig Hargreaves (craig@therobincancertrust.org)
Signature Date: 2025-12-13 - 16:17:33 GMT - Time Source: server

 Agreement completed.
2025-12-13 - 16:17:33 GMT