

# Woodhouse Close Church Community Centre

## Annual Report 2024-2025

Charity Number: 1148458

Website: [www.woodhouseclosechurch.org](http://www.woodhouseclosechurch.org)

Email: [whcclosecomm@gmail.com](mailto:whcclosecomm@gmail.com)

Facebook: [woodhouseclosechurchandcommunitycentre](https://www.facebook.com/woodhouseclosechurchandcommunitycentre)

## Woodhouse Close Church Community Centre

### Annual Report 24-25

#### Chairpersons Report

**‘Volunteers do not necessarily have the time; they just have the heart’ - Elizabeth Andrew**

This quote captured the very essence of Woodhouse Close Church Community Centre.

As Chair of the Trustees, I have the privilege of witnessing the extraordinary commitment of our team - Staff, volunteers and partners - who give of their time, energy and compassion to help others, often in the most difficult of circumstances.

In an area ranked among the top 10% most deprived areas in England, the work of our Centre is not just important, it is **ESSENTIAL**.

This past year, we have continued to provide a lifeline to many in our community. From crisis support and food provision, to warm spaces, well being activities and opportunities for skill-building and connection, the Centre remains a place where people are welcomed, supported and valued.

We do this, not in isolation, but in partnership, with local authorities, charities, faith groups and most importantly, the people of Woodhouse Close themselves. Their resilience, generosity and sense of community are the driving force behind all we do.

Thank you to everyone who has supported the Centre this year, as their contributions - whether time, talent or trust - are helping us make real and lasting change, right at the heart of our community.

***‘For a community to be whole and healthy, it must be based on people’s love and concern for each other’***

Jane Crawford

Chairperson of the Trustees of Woodhouse Close Church Community Centre

## **Woodhouse Close Church Community Centre**

### **Annual Report 24-25**

The Management Committee have pleasure in presenting their report and the financial statements of the charity for the year ended March 2025

#### **Objectives and Activities**

- a) Promote the benefit of the inhabitants of Woodhouse Close Estate and the Neighbourhood defined deprivation by Woodhouse Close Ward (hereinafter called the ('area of benefit') without distinction of sex, sexual orientation, race or of political, religious or other opinions, by associating together the said inhabitants and the local authorities, voluntary and other organisations in a common effort to advance education and to provide facilities in the interest of social welfare, with the objective of improving the conditions of life for the said inhabitants.
- b) Promote such other charitable purposes as may from time to time be determined.

We are a local charity situated in the middle of Woodhouse Close Central Ward within Bishop Auckland, which is statistically in the top 10% most deprived areas of England. Considering this level of socio-economic deprivation, community space, support and spirit is arguably more vital and contributes more significantly to the health and well being of our neighbourhood.

The purpose of Woodhouse Close Church Community Centre is to provide for all in the community, particularly those facing hardship or crisis situations and in need of welfare support.

We work alongside a myriad of organisations in a common effort to provide facilities, services and activities in the interest of social welfare, with the objective of improving quality of life and standards of living.

We offer activities and services for local people and the community based on need and interest.

We have a small dedicated staff team who understand and execute the ethos of the organisation throughout their work, understanding the value and importance of volunteers and supporting them to develop skills, abilities and aspirations that enables the centre and Church to continue supporting local people and the community.

## Woodhouse Close Church Community Centre

### Annual Report 24-25

#### Foreword from Centre Manager

As we reflect on another very busy year here at Woodhouse Close Church Community Centre, I am proud to present our annual report that evidences the work we do and support we give and offer to the local people and communities of Bishop Auckland and surrounding areas.

I continue to be in awe of our staff and volunteers' resilience and dedication in achieving the core ethos and aims and objectives of the charity and I am truly grateful for their continued support.



Deanna—Community Champion  
Tesco

We have had some remarkable achievements over the past year and have made many tangible differences to the lives of those accessing our services—especially in relation to our Crisis Intervention Project and Older Peoples Social Participation.

We are confident that by continuing to work together with other like minded organisations in the area that we will continue to offer our activities and services based on need and interest.

We are committed to ensuring our services are accessible to all who need them and believe that by working together we can achieve a positive and lasting difference.

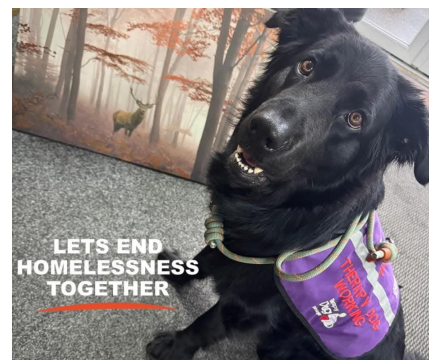
We have been extremely lucky to have had continuous donations and support from local supermarkets, churches, organisations, businesses, people and funders that has enabled us to continue to provide our services and projects for those in need.

**‘Too often we underestimate the power of a touch, a smile, a kind word, a listening ear, an honest compliment, or the smallest act of caring, all of which have the potential to turn a life around’**

- Leo Buscaglia -

**‘ The heart of a volunteer is not measured in size, but by the depth of the commitment to make a difference in the lives of others’**

- DeAnn Hollis -



Cornerstone—Bob the Dog

## Woodhouse Close Church Community Centre

### Annual Report 24-25

#### Challenges, Progress, Achievements and Funding

##### Successful Grants



£20,000 to enable us to continue our older people's social participation activities. This is a core priority for our charity as we firmly believe that everyone needs social connections to survive and thrive. Being alone may leave older people more vulnerable to loneliness and social isolation, which can affect their health and well-being. Elderly activities with a social focus are crucial to overall wellness, when older people constantly engage in social activities they experience significant improvements in their physical, mental and emotional health outcomes.



**Bishop Auckland Town Council** - Overwhelming consistent support to us funding maintenance for the community centre, an Easter activity for children and families, Meals on Wheels and our annual Christmas Lunch for volunteers and users of our activities .

**Durham County Council's Household Support Fund** - providing discretionary support to low income and vulnerable households who are struggling with their energy and food costs, or who need other essential household items.



**National Lottery Community Fund** - in partnership with Auckland Youth and Community Centre's Building Community Resilience Project 2 - has enabled us to supply an extra 30 hours per week of crisis intervention support for those facing financial hardship.



Better for everyone

**BASH AAP** - £14,206 towards the salary of our Senior Crisis Worker (40 hours per week).

**Durham County Councillor—Cathy Hunt, Neighbourhood Budget** - support towards maintenance of community centre.



**Greggs Foundation** - £40,000 towards the salary of our Senior Crisis Worker



Final year of support towards Centre Manager salary.



Final year of support for older peoples social participation activities



**Gaunless Gateway Big Local** - £5,000 towards the salary of our Senior Crisis Worker.

## Woodhouse Close Church Community Centre

### Annual report 24-25



**UK SPF (UK Shared Prosperity Fund)** - £12,833 for IT equipment, which will enable us to support local people with digital inclusion.

**Scotto Trust** - support towards maintenance of community centre.

### **AND THE MANY PEOPLE THAT GIVE ON A WEEKLY BASIS TO SUPPORT THE COMMUNITY CENTRE AND CRISIS INTERVENTION PROJECT**

#### **Achievements**

- New volunteers on board, welcome to Dominique, John and Simon—you're help is invaluable.
- Increased partnership working with Lifeline Community Action, Cornerstone, Gaunless Gateway, Shildon Alive, Little Chefs Big Chefs (LCBC), Auckland Youth and Community Centre (AYCC).
- £2,000 donation from British Gas.
- Developed good relations with new Tesco Community Champion Deanna.
- Chosen by the Newgate Centre as a recipient of the Christmas Giving Tree (toys for those less fortunate) to contribute towards our annual toy appeal which is really needed through these times of financial hardship.
- Increase in Meals on Wheels users.
- New groups established from outside providers - Little Movers, Probation Men's Group and a weekly Asylum Seeker and refugee drop in through Communities Together Durham.
- Continued to break down barriers for people to access other services and support as well as what we offer.



#### **Challenges**

It is a constant challenge to acquire funding to enable us to meet the demand for activities and services for people's needs and interests including staff salaries, however, we work tirelessly to overcome this challenge.

#### **Progress**

We continue to play a vital role, offering spaces for social interaction, learning and recreation, fostering community cohesion and addressing local needs.

**'Individually we are one drop. TOGETHER we are an ocean'**

**Ryynosuke Satoro**

## Woodhouse Close Church Community Centre

### Annual report 24-25

Below is a summary of progress from each of our regular services and activities as well as a snap shot of some of the work relating to specific projects over the past year:

#### **Meals on Wheels and Lunch Club**

Our Meals on Wheels service continues to provide, hot, nutritious and low cost meals to those elderly people who are housebound/isolated or needing to maintain their independence, available on Tuesdays and Thursdays, £4.00 for a main and dessert. Our Lunch Club is open on a Tuesday and Thursday at 12 noon.

This year we have catered **4187** main meals and **3409** desserts and our annual Christmas lunch catered for 140. Thank you once again to our 2 amazing cooks, Catherine and Victoria and our dedicated volunteer drivers, Tess (who also helps prepare the meals), Alan, Liz, Roger, Jean, Nobby and our new volunteers Dominique and John, we are truly grateful for all your help and support over the past year.

#### **Seated Exercise**—Mondays 1p.m.-1.45p.m.



Organised and ran through Thrive—Durham County Council, chair based exercises to help loosen the limbs through fun activities. First week free then £3.00 per session.

#### **Lavender Group**—Every other Friday—10.30a.m.-12noon

Set up in July 2022 by stroke survivors as a place to meet. The group provides activities that help with confidence, hand and eye co-ordination and verbal interaction, quizzes which help memory development and retention. This club brings like minded people together as a group offering support and friendship building by offering compassion and empathy and a safe space to meet and have fun. Funded through Bishop Auckland Town Council.

#### **Solar Connor Fawcett Coffee Morning**—Wednesday 9.30 a.m. to 12 noon

Team Solan were established in 2015 to help improve the quality of life of children and adults who have been affected by a cancer diagnosis or bereavement. Everyone's journey is unique and they try to create a sense of calm and normality at a time when people are also dealing with the obstacles of daily life. This coffee morning is open for everyone to enjoy refreshments and have fun in a warm, friendly, safe and social environment.

#### **D.Kett Toddler Group**—

Monday 9.30a.m.—11.30 a.m.

Wednesday—12.30 p.m.—2.30p.m.

Cost: £1.00

A small friendly group giving the opportunity for children to play and learn together which really helps children understand social cues and learn how to make friends.



## Woodhouse Close Church Community Centre

### Annual Report 24-25

#### Christmas Lunch



Once again we held our annual Christmas lunch for volunteers and users of our activities within the centre. Thank you to Bishop Auckland Town Council who very kindly funded the event and great fun was had by all who attended.



The turnout was the biggest yet, with 140 lunches given out across the event within the centre and our Meals on Wheels service.

Thank you to everyone who came, all our volunteers and staff ....we even had a visit from Santa's elves.

**Well Being Group**—Mondays  
1p.m.—3p.m.



Crafting has long been recognised for its therapeutic benefits, when we add the social element to the mix, these benefits are magnified.

This group offers numerous benefits to those participating, such as: stress reduction, improved mental health, enhanced social skills and a boost in self esteem, all while fostering creativity and a sense of community. A really fun group to be a part of.

#### **Summer Family Activities**

We held 2 activities over the summer holidays for children and parents, very kindly funded through Sainsbury's, thank you so much for putting us forward Elaine, we offered a craft and activity session and a sports day with lunch included.



Engaging in family crafts offers numerous benefits such as: fostering creativity, enhancing fine motor skills, promoting family bonding and boosting self-esteem and confidence, whilst also providing a fun, stress-reducing activity for everyone. Not only does it give a sense of achievement, it is also a meaningful route to self expression.





## Woodhouse Close Church Community Centre

### Annual report 24-25

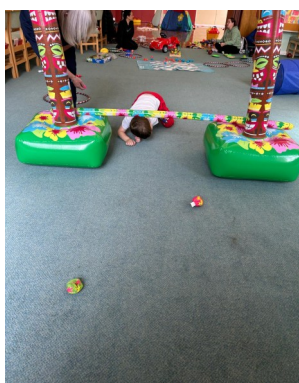


We offered: 3D butterfly making, cake and biscuit decorating, cards, paper plate art, button snails, play dough, 3D pasta art, lollypops, marble runs and Lego making. Lunch was provided and everyone said how much they enjoyed the session.

Our sports day helped to develop social skills and showcased the joy and exhilaration that comes with physical activity—celebrating movement and the capabilities of our bodies in a fun and supportive environment.



Even the Centre Manager tried out the tunnel for the obstacle course, and then outside in the sunshine (which eventually came out) for apple bobbing - a wet end to a great day.



### Food Support/Parcels and Food Waste

Our extension is now fully operational and is the dedicated space for the food element of our Crisis Intervention Project. It has proven to be a godsend for the volunteers making up the food parcels and storing the food that is donated or bought. We continue to support the food waste initiative by picking food up from local supermarkets that is too good to bin and using within our Meals on Wheels Service and Lunch Club as well as offering to local people to take what they can use. Usually available on a Tuesday and Wednesday.





## Woodhouse Close Church Community Centre

### Annual Report 24 - 25

#### Older People's Social Participation Activities:

##### Monday Craft Group

As mentioned earlier in this report this group is also a part of our well-being activities. The emphasis of this group is friendship, fun, creativity and the odd glue gun burn!! We have attempted many different crafts, including: jewellery making, gift tags, wool work and foam flowers to name but a few. We have also held a 10 week course on various forms of printing hosted by Dawn in partnership with Daisy Arts. The group continues to grow with people joining from other groups within the centre, we also meet at a café once per month and have meals out together as a large group further strengthening the bonds of friendship.

##### Chooseday Tuesday - Tuesday 9.30 a.m. to 1.30 p.m.



I would say Chooseday Tuesday is a quiet and reserved group comprising of approximately 12 reserved and gentle women and 5 gentlemen.....but I would be lying!!!!!! It's a lively group which runs on innuendos, jokes and laughter...which is exactly what the members of the group need. Each week there may be a quiz, crafts, games and cards - whilst the men tend to like to play dominoes. Tea, coffee and biscuits are plentiful with the majority staying for lunch. The group



have really gelled, new members are warmly welcomed and great friendships have formed and strengthened.

##### Day Club - Thursday 9.30 a.m. to 2.30 p.m.



Aided and abetted by the wonderful Iris, the Day Club continues doing well. Four new members have recently joined and have settled into the rhythm of the group with everyone actively participating in the activities on offer and of course BINGO. Unfortunately two of our long standing members no longer attend due to ill health, however, they are greatly missed by us all.

The group enjoy morning crafts, especially card making, word searches, colouring and dominoes, they have even learned the art of flower arranging, which they thoroughly enjoyed and showed off their decorations proudly.

A visit on the Weardale Railway and alighting for afternoon tea is planned for summertime.



## Woodhouse Close Church Community Centre

### Annual Report 24-25

**DAISY ARTS** is a locally based arts organisation that has been delivering creative projects for the benefit of the Woodhouse community for 28 years. As a collective of self-employed artists, they believe that engaging in arts and cultural activities strengthens communities, builds confidence, raises aspirations, and supports positive mental health and well-being.

---

#### Woodhouse Art Group

“Art washes away from the soul the dust of everyday life.” – Pablo Picasso

This welcoming adult art group invites people of all abilities to come together in friendship every Tuesday evening from 6pm to 8pm. The sessions offer a unique sense of calm and creativity, where participants are free to explore a variety of mediums, including watercolour, pencil, acrylic, and oil. Members are encouraged to find the artistic style that suits them best and proudly showcase their work in the group’s Winter and Summer exhibitions.

When: Tuesdays, 6pm – 8pm

Cost: £3 per week

Funding: F&PC Scotto Trust

---

#### W.A.S.H. Youth Theatre

“To have a place where young people can come and share ideas, work together as a team, form friendships, and expand in knowledge — not only of the world around them but also of themselves as individuals.”

W.A.S.H. Youth Theatre works with young people aged 10 to 18, offering more than just a weekly two-hour session. This dynamic group fosters a diverse and inclusive environment where theatre and the arts are used as tools to teach life skills, build self-esteem, and nurture personal growth. W.A.S.H. empowers young people to discover their voices and take pride in their creative journey.

When: Mondays, 6pm – 8pm

Cost: £2 per week

Funding: Bishop Auckland Town Council Mayor’s Funding

#### DAISY ARTS

[www.daisyarts.org](http://www.daisyarts.org)

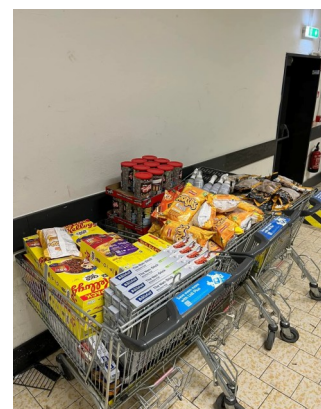
Facebook & Instagram: @daisyartscic



## Woodhouse Close Church Community Centre

### Annual Report 24-25

This is just a snapshot of support we have had over the past year, which includes: sandwiches from St. Johns School that we collect on a weekly basis, Goodall Centre, Lidl, Tesco, Morrisons, Sainsburys, Asda, Lifeline Community Action with cleaning packs, Mathew and Seb, Buston Maughan Ltd, The Newgate Centre and St. Philip and St. James Church Witton le Wear. It is astounding the amount of support and goodwill that we receive on a weekly basis. Thank you so much everyone.



### In House Fundraising

We held a fundraiser within the centre and had cakes, pies, toys, games, crafts and clothes for sale. In two hours we raised £665.00 towards the running of the community centre. Thank you to staff and volunteers who gave up their time on a Saturday and also everyone who came along.



## Woodhouse Close Church Community Centre

### Annual Report 24-25

**Waythrough** - Monday 10.00 a.m. to 11.30 a.m.

Support for up to mental health, alcohol, drugs and housing related issues.



**DASH (Durham Action on Single Housing)** - Monday 10.00 a.m. to 11.30 a.m.

Providing supported housing to single adults over the age of 18 years who are residents of County Durham with mid to high support needs and who are homeless or at risk of homelessness.

**Citizen's Advice Drop In Point** - Tuesday 9 a.m. to 12 noon (by appointment only) through QR code in the community centre, [citizensadvice.org.uk](https://citizensadvice.org.uk) or on the Advice Line on 0808 278 7821.

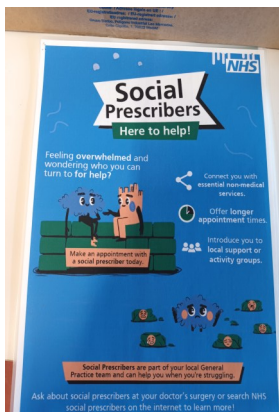


**Social Prescribers** - Wednesday 10.00 a.m. to 12 noon

Connecting individuals to community based activities and services that address their social, emotional and practical needs, ultimately improving their health and well-being.

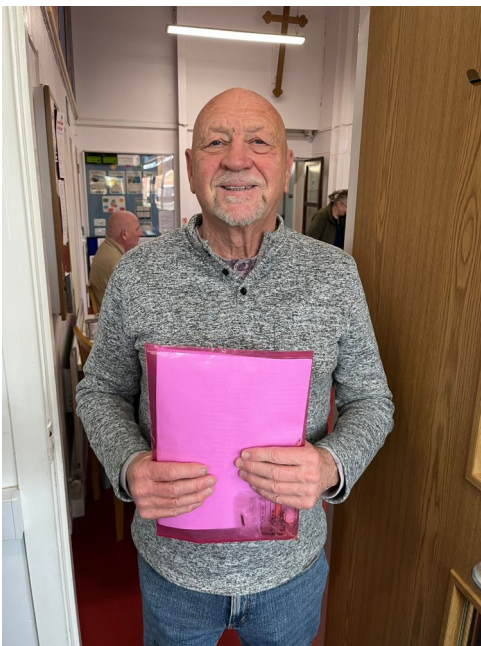
**Little Movers** - Friday 9.30 a.m. - 11.15 a.m.

Expand your child's love of dance, sports and exercise in fun, energetic classes whilst fitness, self-confidence and social skills are developed through dance and creative play. Book direct through Little Movers Darlington.



### SPOTLIGHT ON A VOLUNTEER—ALAN ANDERSON

Alan has been involved in supporting our Meals on Wheels service as a driver and deliverer of the meals for 4 years now, at the beginning he found out we were short of drivers and volunteered to help out, he has been amazing in the amount of support he has offered over the years.



He has been involved in charity work across the area since 1991, holding numerous positions that have all helped and supported local groups and communities of Bishop Auckland, such as:

- School Governor
- Bishop the Boar
- District Councillor
- Town Councillor
- Mayor of Bishop Auckland 2008-2009
- Chair of Gaunless Gateway Big Local

He even finds time to be Santa Claus for local group Christmas parties and the Weardale Railway.

**THANK YOU ALAN, WE LOVE YOU.**



## Woodhouse Close Church Community Centre

### Annual report 24-25

A huge thank you to everyone who has supported us over the past year. We cannot express our gratitude enough for the generosity and kindness shown and given that enables us to provide help in addressing issues facing local people and our community.

Tesco and Community Champion  
Deanna  
Shildon Alive  
Local Cllrs—Cathy Hunt and Joanne Howey  
Morrisons and Community  
Champion Carolyn  
Bishop Auckland Town Council  
Witton Park Church  
St. Mary's & St. Wilfrid's Church  
The Auckland Project  
Darlington Building Society  
Bishop Auckland Ladies Football Club  
Sainsburys' and Elaine  
Asda  
Lidl  
Lifeline Community Action  
Matthew and Seb  
Bishop Auckland Rotary Club  
CAB  
Woodhouse Close Church  
Wear Valley Christian Centre  
St. Anne's CE Primary & Nursery School  
Little Movers  
St. Wilfrid's Catholic Primary School  
Etherley Church  
No. 42

Chloe Walker  
LCBC CIC  
Aclet Close Nursery School  
Cassies Kitchen  
Katie  
Trades 4 Care  
Anonymous Donors and Supporters  
St. Chad's Catholic Primary School  
AYCC  
Solan Connor Fawcett Family Cancer Trust  
Cornerstone Supported Housing and Counselling  
Currys Distribution Centre  
Spennymoor—Jackie and Joanne  
Pollards Allotment Association  
Pollards Inn—Chris  
Cockfield Chapel  
Witton Park Methodist Church  
Dene Vally Methodist Church  
Cockton Hill Infants School  
St. Johns School & Sixth Form College  
St. Philip & St. James Church Witton  
le wear  
Saving Nemo  
The May Bakery  
Newgate Shopping Centre  
British Gas—Adam Spanswick

Exemplar Health Care  
Paul Simpson—Bishop Auckland Art Nostalgia  
Papa Kels  
Catherine & David Brown  
Crook & District Athletic Club  
Buston & Maughan Ltd  
Cultivate For Life  
Jason Heels  
Oakleaf Community Projects CIC  
Family Action  
The Goodall Centre  
Shannon Simpson—Roo's Perfect Gifts  
Bishop Auckland Girls Football Club  
The Well  
Sara Land & Theresa Fairy  
Godmother Atkinson  
Chloe—Ian's granddaughter  
Well Being for Life Service  
Treetops Children's Occupational Therapy Services—Newton Aycliffe  
Hamsterley  
Saxon Church Escomb  
Happily Crafted  
R Lightfoot Electrical

**Woodhouse Close Church Community Centre**  
**Crisis Intervention Project Report April 2024 to March 2025**

During this year we have dealt with 1317 visits; a decrease of 24% on the previous year. The number of separate cases for the year has fallen from 719 to 615. The origin of the referrals have largely remained unchanged with the exception of referral from JCP (down 4%age points and the Police (up 2%age points)

**Frequency of visits and locations**

369 cases visited once (60%): up by 3%age points to last year.

The table attached gives a full breakdown of locations, and the ratios are largely replicated from the previous year. The majority of visits, 573, come from Bishop Auckland (44% down from 48%. Other areas remained fairly static

**Reasons for needing help**

The reasons again remain largely on a par with last year.

The areas that have shown a change are:

Hardships has risen by 2%points. The JCP referrals in particular show that people are experiencing hardship because their private rentals are circa £450 but the benefit allowance is £393. Some people are also still struggling with the bedroom tax.

Relocation and moving house have also increased by 2%age points.

Sanctions have decreased by 2% points.

**Network of Contacts who refer to us and to whom we refer clients**

We have seen a number of new organisations referring individuals to us and this is also reflected in the increase in the area we cover - particularly to the east- which indicates how far we now reach across the county.

The Percentages of those agencies who refer year on year remain much the same with the exception of:

JCP – down 4%points (down to 35% from 39%)

Police – up 2%age points (up from 2%points to 4%points)

Once again all the staff and volunteers have shown wonderful commitment, knowledge, patience and expertise to effectively support those who come to us. They work so hard to ensure people can access what they need - from listening and assessing those needs, helping them to engage/re-engage with organisations that can help them, making sure all are kept safe, answering phone calls and looking after visitors, to accepting and managing the massive amount of food donations and packing food parcels ready for delivery and making sure the community knows how grateful we are for their support. Thank you.

Finally, we would not be able to continue to provide support to people who need a help up without the help of funders and individuals. We are indebted to our tremendously supportive Bishop Auckland and Shildon Area Action Partnership as well as our local councillors. We are very grateful too, to the many local supermarkets and retailers who promote what we do, collect provisions and give their spare food. We receive donations of money, as well as food donations, from church members throughout the deanery, circuit and the member churches of Bishop Auckland Fellowship of Christian Churches as well as many individual donations. All your support is very much appreciated.

# Woodhouse Close Church Community Centre

## Accounts

For the Year Ending

31 March 2025



Charity Number 1148458

# Woodhouse Close Church Community Centre

## Accounts

Year Ending 31 March 2025

<b>Contents</b>	<b>Page</b>
Reference and Administrative Details	2
Structure, Governance and Management	3
Financial Review	4
Independent Examiner's report to the trustees	5
Receipts and payments accounts	6
Statement of assets and liabilities	7
Community Centre accounts	8
Lunch Club accounts	11
Summary of Funds	12

# Woodhouse Close Church Community Centre

## Accounts

Year Ending 31 March 2025

### Reference and Administrative Details

<b>Registered charity name</b>	Woodhouse Close Church Community Centre
<b>Charity registration number</b>	1148458
<b>Principal office</b>	Woodhouse Close Church Proudfoot Drive Bishop Auckland DL14 6PD

### **The Trustees**

The trustees who served the charity during the year were as follows:

Ms Jane Crawford (Chair)  
Rev. David Payne (Vice Chair)  
Heather Graber (Treasurer)  
Monica Fleming  
Malcolm Aspinall  
John Lethbridge (Ald)

<b>Secretary</b>	Mrs Jane Armstrong M.B.E.
------------------	---------------------------

<b>Independent Examiner</b>	Jane Ascroft Jane Ascroft Accountancy Ltd Enterprise House Harmire Enterprise Park Barnard Castle County Durham DL12 8XT
-----------------------------	--



# Woodhouse Close Church Community Centre

## Trustees' Annual Report

Year Ending 31 March 2025

### Bankers

Barclays Bank plc  
Jenkins House  
Bob Hardisty Drive  
Bishop Auckland  
Co Durham  
DL14 7TH

### Structure, Governance and Management

We are an unincorporated association. The governing document is the constitution which was adopted on 17 May 2006 (updated 2012). The Centre was registered as a charity on 7 August 2012, registered charity number 1148458.

Elected members of the Management Committee are responsible for formally monitoring and reviewing progress and making decisions on major policy changes and new initiatives. The Management Committee has seven full members and meets six times a year.

The list of trustees will be updated at the AGM on 8<sup>th</sup> July 2025. Subject to agreement, the elected members of the Management Committee will effectively become the trustees of the Management Committee.

Together with six workers and a Centre Manager, 35 volunteers carry out the day-to-day tasks of the Centre's projects and functions which include: Crisis Intervention; Lunch Club / Day Club / Meals on Wheels; and office administration. Operational responsibilities for the centre's day-to-day running rest with the Centre Manager, under the supervision of the Management Committee. The line management responsibility for staff rests with the Centre Manager although the Cleaner/Caretaker is managed by the Centre Manager on behalf of the Church. The Centre Manager is managed by the Chair of the Management Committee

### **Public Benefit**

Our main activities and who we help are described elsewhere in this report. All our charitable activities are undertaken to further our charitable purposes for the public benefit. The Management Committee have had regard to the Charity Commission's guidance on public benefit throughout the year when deciding on the activities of the charity.

# Woodhouse Close Church Community Centre

## Trustees' Annual Report

Year Ending 31 March 2025

### Financial Review


Total income for the year was £272,634 (2024 - £294,095) and total expenditure was £195,417 (2024 - £340,549) giving an overall surplus of £77,217 (2024 - deficit of £46,454). Included in 2024 expenditure is capital expenditure of £160,458.

At 31st March 2025 the charity held total bank balances of £252,575 (2024 - £175,358).

### **Reserves Policy**

The charity aims to hold between 3 and 6 months' centre running costs in reserve. At 31<sup>st</sup> March 2025 this was estimated to be between £5,000 and £10,000 excluding staff costs and between £12,500 and £25,000 including the wage of the Centre Co-ordinator. At 31<sup>st</sup> March 2025 actual centre reserves were £8,358.

Signed by order of the trustees:

A handwritten signature in black ink, appearing to read 'Jane Crawford', with a large, stylized initial 'J'.

Miss JANE CRAWFORD  
Chair

Date: 8<sup>th</sup> July 2025

# Woodhouse Close Church Community Centre

## Independent Examiner's Report to the Trustees of Woodhouse Close Church Community Centre

Year Ending 31 March 2025

I report on the accounts of the charity for the year ending 31 March 2025 set out on pages 13 to 19.

### Respective Responsibilities of Trustees and Independent Examiner

The charity's trustees are responsible for the preparation of the accounts. The charity's trustees consider that an audit is not required for this year under section 144(2) of the Charities Act 2011 (the 2011 Act) and that an independent examination is needed.

It is my responsibility to:

- examine the accounts under section 145 of the 2011 Act;
- to follow the procedures laid down in the General Directions given by the Charity Commission under section 145(5)(b) of the 2011 Act; and
- to state whether particular matters have come to my attention.

### Basis of Independent Examiner's Statement

My examination was carried out in accordance with the General Directions given by the Charity Commission. An examination includes a review of the accounting records kept by the charity and a comparison of the accounts presented with those records. It also includes consideration of any unusual items or disclosures in the accounts, and seeking explanations from you as trustees concerning any such matters. The procedures undertaken do not provide all the evidence that would be required in an audit, and consequently I do not express an audit opinion on whether the accounts present a 'true and fair view'.

### Independent Examiner's Statement

In connection with my examination, no matter has come to my attention:

(1) which gives me reasonable cause to believe that in any material respect the trustees have not met the requirements to ensure that:

- proper accounting records are kept in accordance with section 130 of the Act; and
- accounts are prepared which agree with the accounting records and comply with the accounting requirements of the 2011 Act; or

(2) to which, in my opinion, attention should be drawn in order to enable a proper understanding of the accounts to be reached.



Jane Ascroft  
Chartered Accountant  
Independent examiner

Enterprise House  
Harmire Enterprise Park  
Barnard Castle  
County Durham  
DL12 8XT

Date: 8<sup>th</sup> July 2025

# Woodhouse Close Church Community Centre

## Receipts and Payments Summary

Year Ending 31 March 2025

	Unrestricted Funds (£)	Restricted Funds (£)	TOTAL 2025 (£)	TOTAL 2024 (£)
<b>Receipts</b>				
Community Centre	20,600	225,549	246,149	263,592
Lunch Club	<u>14,985</u>	<u>11,500</u>	<u>26,485</u>	<u>30,503</u>
	<u>35,585</u>	<u>237,049</u>	<u>272,634</u>	<u>294,095</u>
<b>Payments</b>				
Community Centre	12,418	155,076	167,494	319,608
Lunch Club	<u>16,423</u>	<u>11,500</u>	<u>27,923</u>	<u>20,941</u>
	<u>28,841</u>	<u>166,576</u>	<u>195,417</u>	<u>340,549</u>
<b>Receipts less payments</b>	<b>6,744</b>	<b>70,473</b>	<b>77,217</b>	<b>(46,454)</b>
Transfers	(3,715)	3,715	-	-
Bank and cash balances b/fwd	<u>41,024</u>	<u>134,334</u>	<u>175,358</u>	<u>221,813</u>
<b>Bank and cash balances c/fwd</b>	<b><u>44,053</u></b>	<b><u>208,522</u></b>	<b><u>252,575</u></b>	<b><u>175,358</u></b>

# Woodhouse Close Church Community Centre

## Statement of Assets and Liabilities

As at 31 March 2025

	31 March 2025		31 March
	£	£	2024
			£
<b>Current Assets</b>			
Community Centre current account	252,164		174,984
Petty cash	411		374
		252,575	175,358
<b>Current Liabilities</b>			
Accountancy accrual		(400)	(400)
		252,175	174,958
<b>Net Assets</b>			
Unrestricted funds		7,958	3,681
Designated funds		35,695	36,943
Restricted funds		208,522	134,334
		252,175	174,958

These accounts were approved by the members of the committee on the 8<sup>th</sup> July 2025 and are signed on their behalf by:

Jane Crawford

Chair of Woodhouse Close Church Community Centre  
On behalf of the Board of Trustees



# Woodhouse Close Church Community Centre

Year Ending 31 March 2025

## Community Centre Receipts

	Unrestricted Funds (£)	Restricted Funds (£)	TOTAL 2025 (£)	TOTAL 2024 (£)
<u>Gifts and Donations</u>				
Gifts and Donations	8,914	1,306	10,220	2,457
Building extension donations	-	1,685	1,685	1,006
Crisis donations	-	26,005	26,005	34,382
Fundraising events	665	-	665	555
	<u>9,579</u>	<u>28,996</u>	<u>38,575</u>	<u>38,400</u>
<u>Grants</u>				
Awards For All – Day Club	-	20,000	20,000	-
B.A.T.C – UKSPF Digital Project	-	12,833	12,833	-
Durham C.C. – Crisis Worker	-	14,206	14,206	-
Durham C.C. – Household	-	31,668	31,668	-
Support Fund				
Durham C.C. – Building	-	-	-	87,400
Extension				
Durham C.C. – Day Club	-	-	-	14,720
Durham C.C. – Fun & Food	-	-	-	6,710
CDCF - Crisis	-	-	-	20,000
Tudor Trust – Centre Manager	-	36,000	36,000	36,000
Ballinger Charitable Trust – Day Club	-	10,000	10,000	10,000
AYCC – Crisis grants	-	27,958	27,958	27,118
Greggs – Senior Crisis Worker	-	20,800	20,800	
Scotto Trust	-	3,000	3,000	3,010
Other grants	6,866	5,137	12,003	3,527
Total grants	<u>6,866</u>	<u>181,602</u>	<u>188,468</u>	<u>208,485</u>
<u>Other income</u>				
Photocopying and other sales	3,642	6,699	10,341	7,313
Reimbursements	513	8,252	8,765	9,395
	<u>4,155</u>	<u>14,951</u>	<u>19,106</u>	<u>16,708</u>
<b>TOTAL RECEIPTS</b>	<b><u>20,600</u></b>	<b><u>225,549</u></b>	<b><u>246,091</u></b>	<b><u>263,592</u></b>

# Woodhouse Close Church Community Centre

Year Ending 31 March 2025

## Community Centre Payments

	Unrestricted Funds (£)	Restricted Funds (£)	TOTAL 2025 (£)	TOTAL 2024 (£)
<b>Project Costs</b>				
Crisis payments	-	30,740	30,740	37,360
Digital project equipment	-	12,833	12,833	-
Crisis Workers	-	41,874	41,874	33,896
Day Club worker	-	12,330	12,330	10,942
Other project wages	-	8,252	8,252	14,496
Transport costs	-	426	426	2,699
Activities	-	<u>1,169</u>	<u>1,169</u>	<u>5,031</u>
	-	<u>107,624</u>	<u>107,624</u>	<u>104,424</u>
<b>Centre Running Costs</b>				
Office Costs	7,692	6,137	13,829	16,078
Community Co-ordinator	-	28,569	28,569	28,565
Equipment/Capital spend	3,100	10,412	13,512	160,458
Insurance	1,182	1,875	3,057	2,421
Professional fees	396	-	396	4,907
Sundry costs	<u>48</u>	<u>459</u>	<u>507</u>	<u>1,755</u>
	<u>12,418</u>	<u>47,452</u>	<u>59,870</u>	<u>215,184</u>
<b>TOTAL PAYMENTS</b>	<u>12,418</u>	<u>155,076</u>	<u>167,494</u>	<u>319,608</u>
<b>Receipts less payments</b>	8,182	70,473	78,597	(56,016)
<b>Transfers</b>	(3,905)	3,715	(190)	(1,200)
<b>Bank balances b/fwd</b>	<u>4,081</u>	<u>134,334</u>	<u>138,415</u>	<u>195,632</u>
<b>Bank balances c/fwd</b>	<u>8,358</u>	<u>208,522</u>	<u>216,822</u>	<u>138,415</u>

# Woodhouse Close Church Community Centre

Year Ending 31 March 2025

## Lunch Club

	Unrestricted Funds (£)	Restricted Funds (£)	TOTAL 2025 (£)	TOTAL 2024 (£)
<u>Receipts</u>				
Meals, transport & activities	14,839	-	14,839	11,993
Donations	146	-	146	7,510
Ballinger Charitable Trust	-	10,000	10,000	10,000
Bishop Auckland T.C.	-	1,500	1,500	-
Other grants	=	=	=	<u>1,000</u>
	<u>14,985</u>	<u>11,500</u>	<u>26,485</u>	<u>30,503</u>
<u>Payments</u>				
Food	2,736	-	2,736	2,508
Rent	1,800	-	1,800	-
Wages & salaries	5,597	11,500	16,597	15,333
Equipment	4,943	-	4,943	
Volunteer expenses	1,709	-	1,709	1,644
Other costs	<u>138</u>	=	<u>138</u>	<u>1,456</u>
	<u>16,423</u>	<u>11,500</u>	<u>27,923</u>	<u>20,941</u>
Receipts less payments	(1,438)	-	(1,438)	9,562
Transfers	(910)	-	(910)	(600)
Cash & Bank b/fwd	<u>23,031</u>	=	<u>23,031</u>	<u>14,069</u>
Cash & Bank c/fwd	<u>20,683</u>	=	<u>20,683</u>	<u>23,031</u>

# Woodhouse Close Church Community Centre

Year Ending 31 March 2025

## Summary of Funds

	B/fwd at 1/4/24	Receipts	Payments	Transfers	C/fwd at 31/3/25
<b>Restricted Funds</b>					
Building Extension	2,099	1,685	(3,784)	-	-
Community Co-ordinator	60,052	37,970	(28,569)	500	69,953
Church funds	(2,105)	8,252	(8,252)	2,105	-
Community Fund - Crisis	20,437	20,272	(21,218)	(19,491)	-
Crisis Funds	27,629	55,159	(40,650)	(15,500)	26,638
Crisis Worker	5,110	-	(9,010)	15,000	11,100
Day Club	16,122	40,015	(15,654)	(200)	40,283
Greggs - Crisis	-	35,456	(7,073)	19,491	47,874
Grief & Bereavement	330	-	(1,302)	972	-
Lavender Group	-	734	(33)	-	701
Lottery – Crisis Worker	-	12,666	(4,373)	-	8,293
Monday Craft Group	-	696	(48)	-	648
Toddler Group	686	-	-	-	686
Van	326	40	(1,601)	1,810	575
WASH	96	-	(7)	-	89
Other funds	<u>3,552</u>	<u>12,604</u>	<u>(13,502)</u>	<u>(972)</u>	<u>1,682</u>
<b>Total Restricted Funds</b>	<b>134,334</b>	<b>225,549</b>	<b>(155,076)</b>	<b>3,715</b>	<b>208,522</b>
<b>Unrestricted Funds</b>	<b><u>4,081</u></b>	<b><u>20,600</u></b>	<b><u>(12,418)</u></b>	<b><u>(3,905)</u></b>	<b><u>8,358</u></b>
<b>Total Centre Funds</b>	<b>138,415</b>	<b>246,149</b>	<b>(167,494)</b>	<b>(190)</b>	<b>216,880</b>
<b>Designated Funds</b>					
Redundancy costs	13,912	-	-	1,100	15,012
Lunch Club	<u>23,031</u>	<u>26,485</u>	<u>(27,923)</u>	<u>(910)</u>	<u>20,683</u>
<b>Total Designated Funds</b>	<b><u>36,943</u></b>	<b><u>26,485</u></b>	<b><u>(27,923)</u></b>	<b><u>190</u></b>	<b><u>35,695</u></b>
<b>Total Charity Funds</b>	<b><u>175,358</u></b>	<b><u>272,634</u></b>	<b><u>(195,417)</u></b>	<b>=</b>	<b><u>252,575</u></b>

# Woodhouse Close Church Community Centre

## Accounts

For the Year Ending

31 March 2025



Charity Number 1148458

# **Woodhouse Close Church Community Centre**

## **Accounts**

**Year Ending 31 March 2025**

<b>Contents</b>	<b>Page</b>
Reference and Administrative Details	2
Structure, Governance and Management	3
Financial Review	4
Independent Examiner's report to the trustees	5
Receipts and payments accounts	6
Statement of assets and liabilities	7
Community Centre accounts	8
Lunch Club accounts	11
Summary of Funds	12

# Woodhouse Close Church Community Centre

## Accounts

Year Ending 31 March 2025

### Reference and Administrative Details

<b>Registered charity name</b>	Woodhouse Close Church Community Centre
<b>Charity registration number</b>	1148458
<b>Principal office</b>	Woodhouse Close Church Proudfoot Drive Bishop Auckland DL14 6PD

### **The Trustees**

The trustees who served the charity during the year were as follows:

Ms Jane Crawford (Chair)  
Rev. David Payne (Vice Chair)  
Heather Graber (Treasurer)  
Monica Fleming  
Malcolm Aspinall  
John Lethbridge (Ald)

<b>Secretary</b>	Mrs Jane Armstrong M.B.E.
------------------	---------------------------

<b>Independent Examiner</b>	Jane Ascroft Jane Ascroft Accountancy Ltd Enterprise House Harmire Enterprise Park Barnard Castle County Durham DL12 8XT
-----------------------------	--



# Woodhouse Close Church Community Centre

## Trustees' Annual Report

Year Ending 31 March 2025

### Bankers

Barclays Bank plc  
Jenkins House  
Bob Hardisty Drive  
Bishop Auckland  
Co Durham  
DL14 7TH

### Structure, Governance and Management

We are an unincorporated association. The governing document is the constitution which was adopted on 17 May 2006 (updated 2012). The Centre was registered as a charity on 7 August 2012, registered charity number 1148458.

Elected members of the Management Committee are responsible for formally monitoring and reviewing progress and making decisions on major policy changes and new initiatives. The Management Committee has seven full members and meets six times a year.

The list of trustees will be updated at the AGM on 8<sup>th</sup> July 2025. Subject to agreement, the elected members of the Management Committee will effectively become the trustees of the Management Committee.

Together with six workers and a Centre Manager, 35 volunteers carry out the day-to-day tasks of the Centre's projects and functions which include: Crisis Intervention; Lunch Club / Day Club / Meals on Wheels; and office administration. Operational responsibilities for the centre's day-to-day running rest with the Centre Manager, under the supervision of the Management Committee. The line management responsibility for staff rests with the Centre Manager although the Cleaner/Caretaker is managed by the Centre Manager on behalf of the Church. The Centre Manager is managed by the Chair of the Management Committee

### **Public Benefit**

Our main activities and who we help are described elsewhere in this report. All our charitable activities are undertaken to further our charitable purposes for the public benefit. The Management Committee have had regard to the Charity Commission's guidance on public benefit throughout the year when deciding on the activities of the charity.

# Woodhouse Close Church Community Centre

## Trustees' Annual Report

Year Ending 31 March 2025

### Financial Review


Total income for the year was £272,634 (2024 - £294,095) and total expenditure was £195,417 (2024 - £340,549) giving an overall surplus of £77,217 (2024 - deficit of £46,454). Included in 2024 expenditure is capital expenditure of £160,458.

At 31st March 2025 the charity held total bank balances of £252,575 (2024 - £175,358).

### **Reserves Policy**

The charity aims to hold between 3 and 6 months' centre running costs in reserve. At 31<sup>st</sup> March 2025 this was estimated to be between £5,000 and £10,000 excluding staff costs and between £12,500 and £25,000 including the wage of the Centre Co-ordinator. At 31<sup>st</sup> March 2025 actual centre reserves were £8,358.

Signed by order of the trustees:

A handwritten signature in black ink, appearing to read 'Jane Crawford', with a large, stylized initial 'J'.

Miss JANE CRAWFORD  
Chair

Date: 8<sup>th</sup> July 2025

# Woodhouse Close Church Community Centre

## Independent Examiner's Report to the Trustees of Woodhouse Close Church Community Centre

Year Ending 31 March 2025

I report on the accounts of the charity for the year ending 31 March 2025 set out on pages 13 to 19.

### Respective Responsibilities of Trustees and Independent Examiner

The charity's trustees are responsible for the preparation of the accounts. The charity's trustees consider that an audit is not required for this year under section 144(2) of the Charities Act 2011 (the 2011 Act) and that an independent examination is needed.

It is my responsibility to:

- examine the accounts under section 145 of the 2011 Act;
- to follow the procedures laid down in the General Directions given by the Charity Commission under section 145(5)(b) of the 2011 Act; and
- to state whether particular matters have come to my attention.

### Basis of Independent Examiner's Statement

My examination was carried out in accordance with the General Directions given by the Charity Commission. An examination includes a review of the accounting records kept by the charity and a comparison of the accounts presented with those records. It also includes consideration of any unusual items or disclosures in the accounts, and seeking explanations from you as trustees concerning any such matters. The procedures undertaken do not provide all the evidence that would be required in an audit, and consequently I do not express an audit opinion on whether the accounts present a 'true and fair view'.

### Independent Examiner's Statement

In connection with my examination, no matter has come to my attention:

(1) which gives me reasonable cause to believe that in any material respect the trustees have not met the requirements to ensure that:

- proper accounting records are kept in accordance with section 130 of the Act; and
- accounts are prepared which agree with the accounting records and comply with the accounting requirements of the 2011 Act; or

(2) to which, in my opinion, attention should be drawn in order to enable a proper understanding of the accounts to be reached.



Jane Ascroft  
Chartered Accountant  
Independent examiner

Enterprise House  
Harmire Enterprise Park  
Barnard Castle  
County Durham  
DL12 8XT

Date: 8<sup>th</sup> July 2025

# Woodhouse Close Church Community Centre

## Receipts and Payments Summary

Year Ending 31 March 2025

	Unrestricted Funds (£)	Restricted Funds (£)	TOTAL 2025 (£)	TOTAL 2024 (£)
<b>Receipts</b>				
Community Centre	20,600	225,549	246,149	263,592
Lunch Club	<u>14,985</u>	<u>11,500</u>	<u>26,485</u>	<u>30,503</u>
	<u>35,585</u>	<u>237,049</u>	<u>272,634</u>	<u>294,095</u>
<b>Payments</b>				
Community Centre	12,418	155,076	167,494	319,608
Lunch Club	<u>16,423</u>	<u>11,500</u>	<u>27,923</u>	<u>20,941</u>
	<u>28,841</u>	<u>166,576</u>	<u>195,417</u>	<u>340,549</u>
<b>Receipts less payments</b>	<b>6,744</b>	<b>70,473</b>	<b>77,217</b>	<b>(46,454)</b>
Transfers	(3,715)	3,715	-	-
Bank and cash balances b/fwd	<u>41,024</u>	<u>134,334</u>	<u>175,358</u>	<u>221,813</u>
<b>Bank and cash balances c/fwd</b>	<b><u>44,053</u></b>	<b><u>208,522</u></b>	<b><u>252,575</u></b>	<b><u>175,358</u></b>

# Woodhouse Close Church Community Centre

## Statement of Assets and Liabilities

As at 31 March 2025

	31 March 2025		31 March
	£	£	2024
			£
<b>Current Assets</b>			
Community Centre current account	252,164		174,984
Petty cash	411		374
		252,575	175,358
<b>Current Liabilities</b>			
Accountancy accrual		(400)	(400)
		252,175	174,958
<b>Net Assets</b>			
Unrestricted funds		7,958	3,681
Designated funds		35,695	36,943
Restricted funds		208,522	134,334
		252,175	174,958

These accounts were approved by the members of the committee on the 8<sup>th</sup> July 2025 and are signed on their behalf by:

Jane Crawford

Chair of Woodhouse Close Church Community Centre  
On behalf of the Board of Trustees

# Woodhouse Close Church Community Centre

Year Ending 31 March 2025

## Community Centre Receipts

	Unrestricted Funds (£)	Restricted Funds (£)	TOTAL 2025 (£)	TOTAL 2024 (£)
<u>Gifts and Donations</u>				
Gifts and Donations	8,914	1,306	10,220	2,457
Building extension donations	-	1,685	1,685	1,006
Crisis donations	-	26,005	26,005	34,382
Fundraising events	665	-	665	555
	<u>9,579</u>	<u>28,996</u>	<u>38,575</u>	<u>38,400</u>
<u>Grants</u>				
Awards For All – Day Club	-	20,000	20,000	-
B.A.T.C – UKSPF Digital Project	-	12,833	12,833	-
Durham C.C. – Crisis Worker	-	14,206	14,206	-
Durham C.C. – Household	-	31,668	31,668	-
Support Fund				
Durham C.C. – Building	-	-	-	87,400
Extension				
Durham C.C. – Day Club	-	-	-	14,720
Durham C.C. – Fun & Food	-	-	-	6,710
CDCF - Crisis	-	-	-	20,000
Tudor Trust – Centre Manager	-	36,000	36,000	36,000
Ballinger Charitable Trust – Day Club	-	10,000	10,000	10,000
AYCC – Crisis grants	-	27,958	27,958	27,118
Greggs – Senior Crisis Worker	-	20,800	20,800	
Scotto Trust	-	3,000	3,000	3,010
Other grants	6,866	5,137	12,003	3,527
Total grants	<u>6,866</u>	<u>181,602</u>	<u>188,468</u>	<u>208,485</u>
<u>Other income</u>				
Photocopying and other sales	3,642	6,699	10,341	7,313
Reimbursements	513	8,252	8,765	9,395
	<u>4,155</u>	<u>14,951</u>	<u>19,106</u>	<u>16,708</u>
<b>TOTAL RECEIPTS</b>	<b><u>20,600</u></b>	<b><u>225,549</u></b>	<b><u>246,091</u></b>	<b><u>263,592</u></b>

# Woodhouse Close Church Community Centre

Year Ending 31 March 2025

## Community Centre Payments

	Unrestricted Funds (£)	Restricted Funds (£)	TOTAL 2025 (£)	TOTAL 2024 (£)
<b>Project Costs</b>				
Crisis payments	-	30,740	30,740	37,360
Digital project equipment	-	12,833	12,833	-
Crisis Workers	-	41,874	41,874	33,896
Day Club worker	-	12,330	12,330	10,942
Other project wages	-	8,252	8,252	14,496
Transport costs	-	426	426	2,699
Activities	-	<u>1,169</u>	<u>1,169</u>	<u>5,031</u>
	-	<u>107,624</u>	<u>107,624</u>	<u>104,424</u>
<b>Centre Running Costs</b>				
Office Costs	7,692	6,137	13,829	16,078
Community Co-ordinator	-	28,569	28,569	28,565
Equipment/Capital spend	3,100	10,412	13,512	160,458
Insurance	1,182	1,875	3,057	2,421
Professional fees	396	-	396	4,907
Sundry costs	<u>48</u>	<u>459</u>	<u>507</u>	<u>1,755</u>
	<u>12,418</u>	<u>47,452</u>	<u>59,870</u>	<u>215,184</u>
<b>TOTAL PAYMENTS</b>	<u>12,418</u>	<u>155,076</u>	<u>167,494</u>	<u>319,608</u>
<b>Receipts less payments</b>	8,182	70,473	78,597	(56,016)
<b>Transfers</b>	(3,905)	3,715	(190)	(1,200)
<b>Bank balances b/fwd</b>	<u>4,081</u>	<u>134,334</u>	<u>138,415</u>	<u>195,632</u>
<b>Bank balances c/fwd</b>	<u>8,358</u>	<u>208,522</u>	<u>216,822</u>	<u>138,415</u>

# Woodhouse Close Church Community Centre

Year Ending 31 March 2025

## Lunch Club

	Unrestricted Funds (£)	Restricted Funds (£)	TOTAL 2025 (£)	TOTAL 2024 (£)
<u>Receipts</u>				
Meals, transport & activities	14,839	-	14,839	11,993
Donations	146	-	146	7,510
Ballinger Charitable Trust	-	10,000	10,000	10,000
Bishop Auckland T.C.	-	1,500	1,500	-
Other grants	=	=	=	<u>1,000</u>
	<u>14,985</u>	<u>11,500</u>	<u>26,485</u>	<u>30,503</u>
<u>Payments</u>				
Food	2,736	-	2,736	2,508
Rent	1,800	-	1,800	-
Wages & salaries	5,597	11,500	16,597	15,333
Equipment	4,943	-	4,943	
Volunteer expenses	1,709	-	1,709	1,644
Other costs	<u>138</u>	=	<u>138</u>	<u>1,456</u>
	<u>16,423</u>	<u>11,500</u>	<u>27,923</u>	<u>20,941</u>
Receipts less payments	(1,438)	-	(1,438)	9,562
Transfers	(910)	-	(910)	(600)
Cash & Bank b/fwd	<u>23,031</u>	=	<u>23,031</u>	<u>14,069</u>
Cash & Bank c/fwd	<u>20,683</u>	=	<u>20,683</u>	<u>23,031</u>



# Woodhouse Close Church Community Centre

Year Ending 31 March 2025

## Summary of Funds

	B/fwd at 1/4/24	Receipts	Payments	Transfers	C/fwd at 31/3/25
<b>Restricted Funds</b>					
Building Extension	2,099	1,685	(3,784)	-	-
Community Co-ordinator	60,052	37,970	(28,569)	500	69,953
Church funds	(2,105)	8,252	(8,252)	2,105	-
Community Fund - Crisis	20,437	20,272	(21,218)	(19,491)	-
Crisis Funds	27,629	55,159	(40,650)	(15,500)	26,638
Crisis Worker	5,110	-	(9,010)	15,000	11,100
Day Club	16,122	40,015	(15,654)	(200)	40,283
Greggs - Crisis	-	35,456	(7,073)	19,491	47,874
Grief & Bereavement	330	-	(1,302)	972	-
Lavender Group	-	734	(33)	-	701
Lottery – Crisis Worker	-	12,666	(4,373)	-	8,293
Monday Craft Group	-	696	(48)	-	648
Toddler Group	686	-	-	-	686
Van	326	40	(1,601)	1,810	575
WASH	96	-	(7)	-	89
Other funds	<u>3,552</u>	<u>12,604</u>	<u>(13,502)</u>	<u>(972)</u>	<u>1,682</u>
<b>Total Restricted Funds</b>	<b>134,334</b>	<b>225,549</b>	<b>(155,076)</b>	<b>3,715</b>	<b>208,522</b>
<b>Unrestricted Funds</b>	<b><u>4,081</u></b>	<b><u>20,600</u></b>	<b><u>(12,418)</u></b>	<b><u>(3,905)</u></b>	<b><u>8,358</u></b>
<b>Total Centre Funds</b>	<b>138,415</b>	<b>246,149</b>	<b>(167,494)</b>	<b>(190)</b>	<b>216,880</b>
<b>Designated Funds</b>					
Redundancy costs	13,912	-	-	1,100	15,012
Lunch Club	<u>23,031</u>	<u>26,485</u>	<u>(27,923)</u>	<u>(910)</u>	<u>20,683</u>
<b>Total Designated Funds</b>	<b><u>36,943</u></b>	<b><u>26,485</u></b>	<b><u>(27,923)</u></b>	<b><u>190</u></b>	<b><u>35,695</u></b>
<b>Total Charity Funds</b>	<b><u>175,358</u></b>	<b><u>272,634</u></b>	<b><u>(195,417)</u></b>	<b>=</b>	<b><u>252,575</u></b>