

# Woodhouse Close Church Community Centre

## Annual Report 2021-2022

Charity Number: 1148458

Website: [www.woodhouseclosechurch.org](http://www.woodhouseclosechurch.org)

Email: [whcclosecomm@gmail.com](mailto:whcclosecomm@gmail.com)

Facebook: [woodhouseclosechurchandcommunitycentre](https://www.facebook.com/woodhouseclosechurchandcommunitycentre)

## Woodhouse Close Church Community Centre

### Annual Report 21-22

#### Chairpersons Report

As a Governor at Woodhouse Primary School, I chose to make a number of points to the last Ofsted Inspector. A major point was that the school was and is a beacon for this estate and it affects the lives of many. As Chairperson of Woodhouse Close Church Community Centre, may I make the same point concerning the centre and its work.....**IT IS A BEACON!** We need the bricks and mortar which make our centre, but above all, it is the people who gather here and work here, who make it the humanitarian and Christian pulse. I firmly believe that each individual counts, and with it a responsibility to our fellow human beings.

Having read through our annual report, I take it upon myself to offer sincere thanks to our devoted staff and volunteers. Their commitment to the Community Centre and its work explains why it is well-known beyond any Parish boundaries.

Our Crisis Intervention Project works tirelessly to help people in need, the £20 increase to those on Universal Credit during Covid, helped many families, however, its removal marks a growing number of people who are now making enquiries for support to our crisis project, trying to manage the economic storms being sent through the system. Choices between heating and eating are unacceptable, deprivation raises moral and ethical questions which should be answered.

My thanks must extend to all Churches and organisations who donate money, food and other help, as well as to the local supermarkets donating food which would otherwise be wasted. We have built up a bond with those who care.

If I may digress on a point of sadness, my presence here as Chair, is due to the passing of a dear friend and colleague, David Fleming. I have known and worked with David for many years, and what a pleasure it was for me to join with him at the 100th birthday party celebration of Margaret Avery within the community centre.

In my opinion, his mayoralty, with the help of his wife Monica, put Bishop Auckland and Woodhouse centre stage, his enjoyment and integrity glows from those photographs on page 12 of our report. David's smile exudes his pleasure at its best—helping people! We will all miss you David and our thoughts are with Monica.

I could write on, detailing projects and their successes, but I will close with a quotation from a rather special 5 year old.

***'Remember this Grandad, we are all infinitely precious' - Freya Isabella Lethbridge 16.12.20***

God Bless

John Lethbridge (Ald)

Chairperson for the board of trustees

Woodhouse Close Church Community Centre

## **Woodhouse Close Church Community Centre**

### **Annual Report 21-22**

The Management Committee have pleasure in presenting their report and the financial statements of the charity for the year ended March 2021.

#### **Objectives and Activities**

- a) Promote the benefit of the inhabitants of Woodhouse Close Estate and the Neighbourhood defined deprivation by Woodhouse Close Ward (hereinafter called the ('area of benefit') without distinction of sex, sexual orientation, race or of political, religious or other opinions, by associating together the said inhabitants and the local authorities, voluntary and other organisations in a common effort to advance education and to provide facilities in the interest of social welfare, with the objective of improving the conditions of life for the said inhabitants.
- b) Promote such other charitable purposes as may from time to time be determined.

We are a local charity situated in the middle of Woodhouse Close Central Ward within Bishop Auckland, which is statistically in the top 10% most deprived areas of England. Considering this level of socio-economic deprivation, community space, support and spirit is arguably more vital and contributes more significantly to the health and well being of our neighbourhood.

The purpose of Woodhouse Close Church Community Centre is to provide for all in the community, particularly those facing hardship or crisis situations and in need of welfare support.

We work alongside a myriad of organisations in a common effort to provide facilities, services and activities in the interest of social welfare, with the objective of improving quality of life and standards of living.

We offer activities and services for local people and the community based on need and interest.

We have a small dedicated staff team who understand and execute the ethos of the organisation throughout their work, understanding the value and importance of volunteers and supporting them to develop skills, abilities and aspirations that enables the centre and Church to continue supporting local people and the community.

## Woodhouse Close Church Community Centre

### Annual Report 21-22

#### Foreword from Centre Manager

Eventually we are back to some semblance of normality after the past 2 years of Covid stipulations. We have tried our best to continue to deliver our services and activities based on community need and interest in very uncertain times, but we can finally say, we are now back to resuming all but one of our services. Our lunch club will hopefully resume in April. Local people, Churches, groups and organisations have continued to be extremely supportive over the past year, donating food and



Students from Bishop Auckland College—as part of their BTEC Employability Skills course chose us to learn more about our work and fundraise for our food

fundraising that has enabled us to continue delivering our services for those in need and doing what we do best—listening and responding in a pro-active way.

A huge thank you goes out to all the staff, volunteers, funders, supermarkets, local people and organisations who have helped to make Woodhouse Close Church Community Centre continue to thrive .

**‘The most truly generous persons are those that give silently, without hope of praise or reward —  
Carol Ryrie Brink**

We have continued to develop collaborative partnership work with The Auckland Project (TAP), Auckland Youth and Community Centre (AYCC) and Gaunless Gateway in relation to our Crisis Intervention work and supporting people with their health and well-being through creative family sessions.

Our Day Club and other older peoples activities has been re-vamped due to the employment of a new Day Club Co-ordinator, welcome to the team Kaye. Your confidence has grown immensely over the years and you are a great asset to the organisation advocating active ageing.



After years of our food bank working out of a cupboard, we are now well on the way to having a dream extension built that will be a functional bespoke space that will house all elements of the food bank. Thank you so much to the funders involved in this for all their support, especially BASH AAP (Bishop Auckland and Shildon Area Action Partnership), TAP and Woodhouse Close Ward Local Councillors.

With great sadness we said goodbye to our Chairperson David Fleming. We will be forever grateful for all his hard work and commitment he gave to Woodhouse Close Church Community Centre over the years. Rest in peace Dave, you are a great miss.

**‘Our lives were blessed through your friendship, may you find blessings in the next life dear friend’.**



Paul Simpson—donating food and presents from his Prints for Presents Appeal



Paige from Sainsbury's baked brownies and cheesecakes and raffled to colleagues, to buy a trolley full of food for our foodbank





## Woodhouse Close Church Community Centre

### Annual Report 21-22

#### Challenges, Progress, Achievements and Funding

2021-22 has been a significant year in getting back to 'normal' after our 2 years in a covid pandemic. Our team of amazing staff and volunteers have gone above and beyond in enabling the community centre to thrive and continue to listen and respond to need in the community.

This years successes, challenges and good news:

Our new van is currently on order and should hopefully be in situ by July 2022. Thank you to all the funders who have made this possible (Bernard Sunley Foundation, BASH AAP, Local Councillors, Methodist Church Darlington District, BAS Methodist Church and Gaunless Gateway).

We have continued to increase our social media presence, putting out information for the local community. Huge thanks goes to Debbie who is our social media genius.



We were successful in gaining funding from Durham County Councils Fun and Food programme which allowed us to provide free holiday activities with packed lunches throughout the summer and Christmas holidays. We had trips to Beamish Museum and Darlington Hippodrome to see Cinderella and a Children's Christmas Party. A lot of fun was had by all at all the events.



We held a grand raffle in the centre and a bag pack at Sainsbury's—raising £2,000 towards our Meals on Wheels service. Thank you to Debbie for arranging the raffle, the prizes were amazing.



The Day Club were successful in gaining funding from The Scotto Trust for salaries and resources and had a donation of £500 from the Buffs to support in meaningful ageing activities.

After 2 years of social distancing etc. we were finally able to hold our annual Christmas lunch. Money was raised through

Elaine at Sainsbury's that allowed us to cater for 100 people. What a lovely occasion it was, people were thrilled to once again be able to get together and chat and have a lovely Christmas dinner.



## Woodhouse Close Church Community Centre

### Annual Report 21-22

We have still had to adhere to Covid guidelines and restrictions throughout the year, which has at times been difficult, however, staff, volunteers and users of our activities and services have been amazing in keeping themselves and others safe, everyone working together to get through the difficult times.

We continue to increase our working relationships with the Auckland Project with a new staff member joining to support with health and well-being. Welcome aboard Jo Grant.

Raising funds for all the salaries, activities and services is always a challenge, but we continue to try every avenue in order to continue our work for and with our communities.



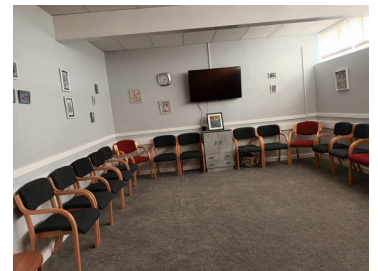
We are in the process of raising funds to allow us to build an extension that will fully house all aspects of the food bank. This will be an amazing achievement and so helpful to be able to free up space within the centre as well as giving the food bank volunteers a safe and comfortable space to carry out their work and store the made up parcels. £85,000 has been raised so far.

We appointed a new Chairperson, welcome to John Lethbridge, previous Woodhouse Close Ward Councillor and newly appointed Alderman.

Congratulations John.

In partnership with The Auckland Project we were able to decorate and refurbish our Fylands and Tindale rooms, making it more inviting and up to date, with newly decorated walls and new furniture, it's made a huge difference.

Once again we would like to say a huge thank you to all the staff, volunteers, funders, organisations and the community for their continued support over the years, we could not do what we do without your support, dedication and commitment. Long may we continue to provide for our local community and its people.



Inspirational quotes that sum up our community and its supporters:

***'There is immense power when a group with similar interests get together to work toward the same goals' - Idowu Koyenikan***

***'When we all lend a hand in helping in the community, we improve everyone's quality of life'***

***- Germany Kent***

***'Community is much more than belonging to something; it's about doing something together that makes belonging matter' - Brian Solis***

## Woodhouse Close Church Community Centre

### Annual Report 21-22

Below is a summary of progress from each of our regular services and activities as well as a snap shot of some of the work relating to specific projects over the past year:

#### Meals on Wheels

Our Meals on Wheels service continues to provide, hot, nutritious and low cost meals to those elderly people who are housebound/isolated or needing to maintain their independence.

This year we have catered 2863 main meals and 2100 desserts. Thank you once again to our 2 amazing cooks, Catherine and Victoria.

We are hopeful that our Lunch Club will resume in April 2022.

#### Thrift Shop



The Thrift Shop continues to play an integral part in supporting our Crisis Intervention Project and the local community to enable them to purchase essential household and clothing items at a very low cost.



#### Reducing Landfill and Food Waste



We continue to work in partnership with Morrisons, Lidl, Asda and Tesco in their food waste scheme. We continue to be overwhelmed by the support given from our local supermarkets, donating surplus food that would otherwise have gone to landfill.

Local people and the community continue to benefit from this scheme and have fed back to us how this has helped them to eke out their income or benefits over the weeks and with the rising cost of food this has been a godsend to them.

#### Holiday Hunger

Through Durham County Council's Fun and Food programme we were able to provide packed lunches throughout the summer and October holidays and hold 3 events; a trip to Beamish, a trip to the pantomime to see Cinderella and a children's Christmas party.

##### **Beamish Museum**



49 people attended our Beamish trip consisting of 21 adults and 28 children with 49 packed lunches being provided.

*'You have excelled yourself today, absolutely brilliant'*

*'I haven't taken my kids out for so long, thank you for the opportunity'*



## Woodhouse Close Church Community Centre

### Annual Report 21-22

#### Pantomime



68 people attended our trip to Darlington Hippodrome to watch Cinderella consisting of 24 adults and 44 children. 68 packed lunches were provided.

*'Thank you for organising such a lovely pre-Christmas treat. The boys had a lovely time.'*

*'We loved having ice-cream and it was a very magical experience before Christmas.'*

#### Christmas Party



61 people attended our children's Christmas party at the centre consisting of 23 adults and 38 children. 61 party lunches were provided, with games, prizes, a disco and a visit from Santa. Selection boxes were kindly provided by CA Group in Evenwood and each child received a one from Santa.

*'Brilliant day, my 4 children loved it, thank you.'*

*'Fantastic day, kids really enjoyed it and made some special memories, thank you.'*

*'Kids have had a blast, thanks, Merry Christmas.'*

#### The Auckland Project

We continue to work with the Auckland Project in relation to their focus on supporting Woodhouse Close estate regarding health and well being and using an arts focus to reduce mental health and confidence issues. The Creative Families sessions has a core group of parents and children meeting up and using craft and art activities as a mechanism that can enhance self-esteem, improve memory, reasoning and resilience and help improve mental health through creativity. There is also a walking group that promotes and maintains motivation and good health and enables socialising with like minded people therefore reducing the impact of social isolation.

#### Doreen Kett Toddler Group



From opening our doors fully again in September 2021, we have welcomed over 41 families (made up of 48 children and 41 adults) into our group totalling 348 visits, most of which were new faces to the centre. In this short amount of time we have had a successful Autumn party, Christmas party with a visit from Santa, a visit to Darlington Hippodrome to see Cinderella in Panto and an Easter Party. In the Summer, we hope to have our annual South Shields trip and have planned ahead for our panto trip and parties for the future year. The group is successfully led by volunteers Natalie Fox, Margaret Nodding and Claire Lowes. We have had the opportunity of a work placement student from Bishop Auckland College working towards her studies, welcome aboard Shannon.

Day; Wednesday

Time: 12.45 p.m.—2.30 p.m.

Cost: £1.00 per session



## Woodhouse Close Church Community Centre

### Annual Report 21-22

#### Credit Union

It's been a strange year!!! We are now back up and running at the Church and Community Centre again, but the response is not as good as before the pandemic started. People got used to paying in at the Post Office during lockdown and we are assuming that some are continuing this method. We hope to carry out a publicity drive after Easter and restart the collections at Woodhouse Close Community Primary School. Sadly one of our regular members and savers, Clive Geary, died recently. He saved with us for a long time and we shall miss his visits.

Our volunteers continue to be very committed each week, of which we are extremely grateful for their support. Speak to us if you want to save or require a loan—all new customers are very welcome. Its amazing how quick you can save—even if it's just a few pennies per week—it all adds up.

Day: Thursday

Time: 9.30 a.m.—11.30 a.m.

#### Thursday Day Club



Welcome back

The club started back up on 1st July 2021 from 10 a.m.—2 p.m. with 7 members, 1 Co-ordinator and 1 volunteer. The club has been extremely successful since then with 11 regular members attending each session and we have extended the session by 1 hour so the new time of the group is 9.30 a.m. to 2.30 p.m.

The club follows a regular format, refreshments on arrival and throughout the session. If there is no planned craft activity members can choose to do colouring, word searches and puzzles which help with their hand eye co-ordination and gets the brain cells moving. We have a quiz and a game such as play your cards right.

Members have also played card bingo which proved a hit. Not only are these activities fun, it also gives the opportunity to pick up on areas of potential struggles.

Bingo is still a major crowd pleaser which takes up most of the afternoon session.

Regular craft activities have been introduced as stand alone or part of our themed days. Members have participated in making bookmarks, photo frames, sparklers, paper chains, fridge magnets and wreaths. These activities encourage fine motor and social skills as they encourage and compliment each other to complete their masterpiece.



She may be little but she has a mighty aim

Our themed days have included a carnival, Halloween, bonfire night and Christmas. Although a little hesitant at first, all members participated and enjoyed the sessions, especially the ring toss, ping pong bounce and tin can alley. It was truly enjoyable watching them and their fun and laughter caught the attention of many within the centre.



Masterpieces

## Woodhouse Close Church Community Centre

### Annual report 21-22

Trips out have been on hold partly because of the virus and partly getting accustomed to each other again, Ideas have been put forward for visits out, such as: Redcar, South Shields, Blackpool!!!, Coronation Street, Stockton Market and Preston Park. Hopefully, as the weather warms up and covid levels decrease we can organise something soon.

Future activities will include Easter and we will be celebrating the Queen's platinum Jubilee. We are also hoping to acquire our own piece of garden at the back of the Church so we can create a safe and colourful area for members to enjoy in the nice weather.



It was clear from the first week back to see how lockdown had impacted on mobility, confidence and social interactions. It has been really rewarding watching everyone bloom, seeing friendships being rekindled and the twinkle returning to their eyes.

#### **Bereavement Support Group**

This group is for anyone that has lost someone they have cared about—no matter how recent or long ago—to have the opportunity for quiet time and to reflect and talk to others if needed who have all suffered loss. 1-1 support is given as and when needed.



**Look at that smile**

One suicide has been averted by being listened to and responded to in an empathic and understanding way. We also signpost and link users of the group to other agencies and organisations, such as Cruse, that help with more in-depth needs and support.

Following the sudden and unexpected loss of a much loved and precious family member in November 2021, the group was put on hold to allow the Co-ordinator time to grieve. The intention is to restart the group in May on a monthly drop in basis as part of Church pastoral care.

#### **Tuesday Chooseday**

This group has been a slow started, but is now beginning to come into its own. It runs on a Tuesday (surprise) from 10 a.m. until 12 noon. Although numbers are still low, there are regular members who really enjoy the sessions. The drop-in aspect is an important part of the session which allows anyone that comes into the building to drop in for a cuppa and chat or just for a change of scenery. This format has supported people that have needed help from our Crisis Intervention Project and we are keen to continue this support to all especially those most in need and vulnerable. There are some exciting ideas in the pipeline to further develop, expand and move this group forward.....so watch this space for updates!!!

## Woodhouse Close Church Community Centre

### Annual Report 21-22

#### Woodhouse Art Group: Daisy Arts



*"Happy are the painters, for they shall not be lonely. Light and colour, peace and hope, will keep them company to the end of the day."* Winston Churchill

When: Tuesday 6pm – 8pm

Cost: £3 per week

Ages: 18+

A weekly group for learning and enjoying the calmness that doing art brings. Delivery practitioners share their knowledge of different art techniques, guiding those attending to find their own unique style. Our sector is all about collaborating and locally we work alongside a great number of organisations to support the provision of opportunities far and beyond this weekly 2-hour sessions.

Daisy Arts contact: Jane Crawford

E: [info@daisyarts.org](mailto:info@daisyarts.org)

FACEBOOK & INSTAGRAM: [@daisyartscic](#)

[www.daisyarts.org](http://www.daisyarts.org)

#### W.A.S.H. Youth Theatre: Daisy Arts

*"To have a place where young people can come & share ideas, work together as a team, form friendships and expand in knowledge, not only of the world around them but also of themselves as individuals."*

When: Monday 6pm – 8pm

Cost: £2 per week

Ages: 10 – 16

Our aim is to share our specific expertise of working with young people to provide regular weekly sessions to help in combating loneliness, anxiety and poor mental health – story development, improvisation, creative writing, music, performance; offering a chance for young people to come together. Through the development of a meaningful and fun delivery package, we provide a safe space where young people can develop skills, share thoughts and ideas, and share of themselves; what's happening in their lives, what's important to them... often things that aren't coherently acknowledged and supported within a school environment, PLUS, participation in cultural or art activities offer amazing experiences for those taking part.



*"We have a role, to help young people become like themselves instead of more like everyone else"* Daisy Arts contact: Jane Crawford

E: [info@daisyarts.org](mailto:info@daisyarts.org)

FACEBOOK & INSTAGRAM: [@daisyartscic](#)

[www.daisyarts.org](http://www.daisyarts.org)



## Woodhouse Close Church Community Centre

### Annual Report 21-22

#### Tribute to David Fleming



Sadly, our dear friend and Chairperson Dave Fleming passed away after a short illness in June 2021.

Dave was a highly valued and respected member of Bishop Auckland Town Council for over 7 years and was Mayor of Bishop Auckland in 2013 and again in 2018.

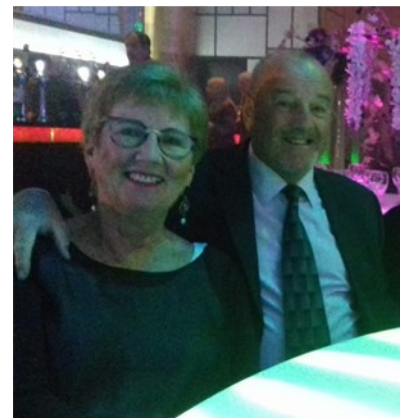
He picked Woodhouse Close Church Community Centre's food bank element of the Crisis Intervention Project as his chosen charity in 2018 and raised £5,287.93 to help us to continue to support those facing financial hardship and crisis situations. Dave said ***'the amount raised is a fantastic example of the goodwill the local community has for charity fundraising'***.

He held various events throughout his Mayoral year such as Mayors Civic Ball, St. Patricks Day Celebration, Meet the Mayor Afternoon Tea and a Christmas Quiz, he managed to get Barclays to match fund anything raised and the total was amazing for our cause.

He was totally dedicated and committed to supporting our ethos of listening and responding to need in a pro-active way without judgement or prejudice.

Dave was down to earth and straight to the point, especially around issues close to his heart, food poverty, community well-being and wanting to improve Bishop Auckland for local people.

He viewed the food bank as a much needed resource that offers comfort and support to those who are in most need and considered the charity vital to the welfare of many local people in desperate need and was a cause close to his heart as Monica (his devoted wife) is one of the fantastic volunteers who gives their time freely to help others at the centre.



Dave was a huge support to the Centre Manager in the daily operations of the centre, being on hand as a listening ear and offering advice and guidance when and where needed. He was an all round amazing person with a wicked sense of humour, who would do anything to help if he could, you could always find him in the kitchen washing up after a community event, he attended a 100th birthday party celebration for our longest surviving member Margaret Avery and opened many events. He was an amazing person with a heart of pure gold and a true gentleman.



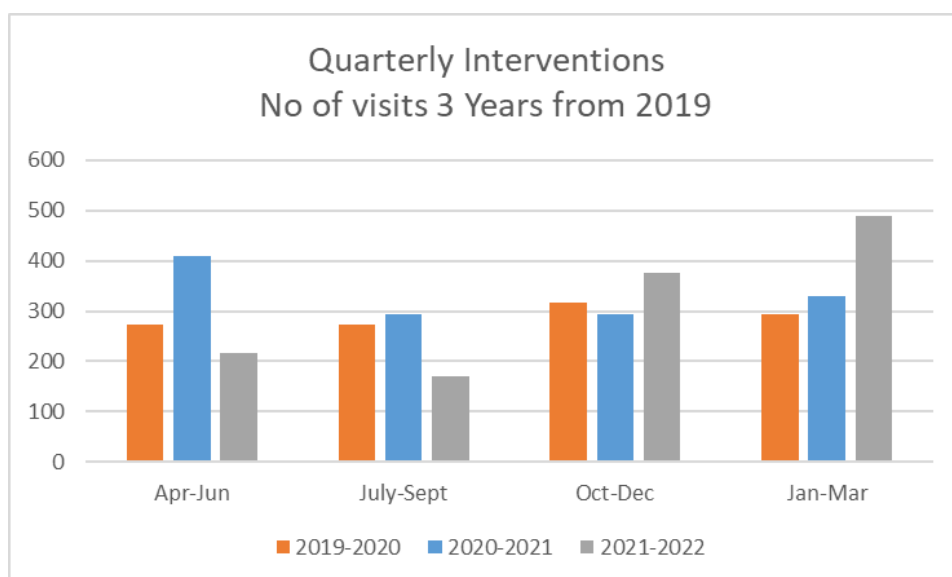
**Always in our hearts, gone but never forgotten**



# WOODHOUSE CLOSE CHURCH COMMUNITY CENTRE CRISIS SUPPORT ANALYSIS APRIL 2019 TO MARCH 2022

Visits	2019-2020	2020-2021	2021-2022
Apr-Jun	272	410	216
July-Sept	274	293	171
Oct-Dec	317	294	375
Jan-Mar	295	330	489
total	1158	1327	1251

People	2019-2020	2020-2021	2021-2022
Apr-Jun	512	962	427
July-Sept	493	700	358
Oct-Dec	682	673	821
Jan-Mar*	500	784	1017
total	2087	3119	2623



Total Number of adults 1620

Total number of children 1003

## Frequency 2021 -'22

Times visited	Cases	% of cases	No of visits
1	314	57%	314
2	94	17%	188
3	43	8%	129
4	31	6%	124
5	25	5%	125
6	11	2%	66
7	8	1%	56
8	6	1%	48
9	3	1%	27
10	2	0%	20
11	1	0%	11
12	1	0%	12
13	1	0%	13
14	1	0%	14
15	3	1%	45
18	1	0%	18
20	1	0%	20
21	1	0%	21
	547		1251

## Reasons for needing help

Reason	visits	% of total visits	2020-'21 visits
Budgeting	858	69%	50%
Hardship	88	7%	6%
Benefit sanction	55	4%	3%
Benefit Transition			
Delay	49	4%	6%
Illness	37	3%	2%
Debt	36	3%	4%
homeless	27	2%	1%
Domestic Abuse	15	1%	1%
mental health	15	1%	1%
moved house	11	1%	0%
COVID	9	1%	0%
other	9	1%	1%
Lost job	8	1%	3%
Ben Trans	7	1%	0%
Lost money/purse/wallet	6	0%	1%
Money Stolen	5	0%	0%
Covid - isolating	3	0%	8%
Covid restrictions	3	0%	0%
Relocation	3	0%	0%
power cut	2	0%	0%
Bereavment	2	0%	0%
Between jobs	1	0%	0%
Covid - Furloughed	1	0%	1%
victim of crime	1	0%	0%

## Woodhouse Close Church Community Centre

By Location	Visits	% of 546			Referrals	% 2020-2021		
		Cases	cases			Visits	% of visits	2021
Bishop Auckland	766	287	53%		Self	549	44%	66%
Shildon	89	47	9%		JCP/UC	234	19%	2%
Coundon & Coundon								
Grange	87	48	9%		Goodall Centre	74	6%	2%
St Helen Auckland	44	15	3%		Citizens Advice	38	3%	1%
Evenwood	32	15	3%		Families First	29	2%	1%
Eldon & Eldon Lane	25	47	9%		Probation	28	2%	3%
Ferryhill	23	16	3%		Saddler House	29	2%	1%
Close House	20	7	1%		Homegroup	27	2%	8%
Crook	18	11	2%		Health Visitor	25	2%	2%
West Auckland	17	11	2%		Social Services	24	2%	5%
Leeholme	12	6	1%		Family member/Friend/Neighbour	23	2%	0%
Spennymoor	12	5	1%		Teesdale House	19	2%	0%
Willington	11	4	1%		Humankind/CastleBridge Centre	22	2%	1%
Witton Park	10	6	1%		DCC Community Hub	12	1%	
Cockfield	7	5	1%		One Point	11	1%	
Howden le Wear	7	3	1%		Coney Avenue	9	1%	0%
Newton Aycliffe	7	6	1%		welfare assistance	8	1%	
Chilton	6	4	0%		WHCCCC	7	1%	
Croxdale	5	2	0%		School	6	0%	
Barnard Castle	4	2	0%		Police	6	0%	
Frosterley	4	2	0%		AYCC	5	0%	
homeless	4	3	0%		Believe Housing	5	0%	
Ludworth	4	1	0%		DCC Housing Solutions	5	0%	
Tow Law	4	4	0%		Centrepont	4	0%	
Witton le Wear	4	3	0%		Trussell Trust	4	0%	
Byers Green	3	3	0%		Changing lives	3	0%	
Fir Tree	3	1	0%		DCC	3	0%	
Staindrop	3	2	0%		DCC Support&Recovery	3	0%	
West Cornforth	3	3	0%		Father Dennis	3	0%	
Binchester	2	1	0%		Cornforth Partnership	2	0%	
Roddymoor	2	2	0%		GP practice	2	0%	
Sunnyside	2		0%		Harbour	2	0%	
Billy Row	1		0%		MPs Office	2	0%	
Cotherstone	1		0%		Stockton Daryl House	2	0%	
Durham	1		0%		SW	2	0%	
Escomb	1		0%		Woodhouse primary school	2	0%	
Houghton le Spring	1		0%		Womens Refug	2	0%	
Middleton in Teesdale	1		0%		Alcohol Service	1	0%	
Sunnybrow	1		0%		Care coordinator	1	0%	
Toronto	1		0%		Catch 22	1	0%	
Trimdon	1		0%		College	1	0%	
Trimdon Station	1		0%		<b>Continued on next page</b>			
Wheatley Hill	1		0%					
Grand Count	1251							

## Woodhouse Close Church Community Centre

Dales Locality Team	1	0%
DCC Employability	1	0%
Durham foodbank	1	0%
Facebook	1	0%
Family worker	1	0%
Groundwork	1	0%
Landlord	1	0%
NHS	1	0%
Princes Trust	1	0%
Sainsburys	1	0%
Salvation Army	1	0%
Shildon & Chiltern family fund	1	0%
South learning disability team	1	0%
St Johns School	1	0%
Thirteen	1	0%
thrift shop	1	0%

## **Woodhouse Close Church Community Centre**

### **Crisis Intervention Project Report April 2021 to March 2022**

During this year we have dealt with 1251 visits, representing 546 separate cases.

This last years details have thrown up an interesting trend. The number of visits and people needing help fell significantly for the first two quarters of the year. The number of people helped From April until June fell by 55% (962 down to 427). The people who were helped from July until September also fell by 49% (700 down to 358).

However, the third and fourth quarters saw a rise in need. From October to December there was a rise of 22% (673 up to 821) and from December until the end of March this year, there was a further rise of 30% (784 up to 1017).

It would be reasonable to assume that the reduction in need was as a result of the Universal Credit uplift, for the first part of the year. The subsequent increase in need from October, which has escalated from January to March this year.

The evidence seems to be borne out by the fact that of the total cases for the year (546), 335 cases (61%) cited budgeting and the highest percentage of budgeting cases (55%) occurred during the six months from October.

Given the expected increases in the cost of living over the next months, this present year will undoubtedly present even more challenges to the work that is carried out.

#### **Frequency of visits**

313 cases visited once (57%), up one percentage point on last year, 89 visited twice (16%) down 3 percentage points on last year. Whilst those coming to us 3 and 4 times remained largely the same proportions as the previous year (14%, up 1 percentage point), we have experienced a significant rise in those cases where people have requested help 10 or more times in the year. Last year this accounted for 1% of all cases and this year the figure is 4%.

#### **Locations by Cases**

The table attached gives a full breakdown of locations, and whilst the majority, 287, come from Bishop Auckland (53%), 48 (9%) cases came from Coundon, 47 from Shildon (9%), 54 (10%) from Eldon, Eldon Lane and Close House , 16 (3%) from Ferryhill, 15 (3%) from St Helen Auckland, 15 (3%) from Evenwood, and 11 (3%) respectively from Crook and West Auckland. The number of cases shown indicate that some people have moved to different locations during the year.

#### **Network of Contacts who refer to us and to whom we refer clients**

From the attached table it can be seen the number and variety of support organisations who use our project and to whom we refer clients, has grown significantly once again.

Last year, largely due to the pandemic, the number of self-referrals rose to 66% of all visits. This year that figure has decreased to 44%

One area where agency referrals have increased significantly is from the community Mental Health Teams. Last year we had 25 referrals but this year we have seen a threefold increase to 74.

There was also an increase in referrals from JobCentre Plus from 21 to 234 this year.

As restrictions eased over the year, we have also seen increases in referrals from Citizens Advice (38) up from 9 last year), Families First (29), up from 9 last year. The referrals from Homegroup have decreased this year, from 11 down to 27.



## Woodhouse Close Church Community Centre

Once again, volunteers have been brilliant in keeping the foodbank operational – from making sure all are kept safe, answering phone calls and looking after visitors, to accepting and managing the massive amount of food donations and packing food parcels ready for delivery. Thank you to you all, we truly appreciate your help and support and we could not continue to do what we do without your never ending commitment and dedication to the project.

We would not be able to continue to provide support to people who need a help up without the support of funders and individuals. We are indebted to our tremendously supportive Bishop Auckland and Shildon Area Action Partnership (AAP), as well as our local councillors. We receive donations of money, as well as food donations, from church members throughout the deanery, circuit and the member churches of Bishop Auckland Fellowship of Christian Churches as well as donations from many individuals.

All your support is very much appreciated.

***‘Giving is not just about making a donation,  
it is about making a difference’***

Kathy Calvin

### **Case Studies**

As stated in the previous pages we have many people requiring support from our Crisis Intervention Project. Below are a few case studies to highlight the variety of need that we support.

1. A call was taken from a young woman who was struggling with providing food and utilities. She had no referral, but stated she had recently given up a well paid job to foster her nephew who was 3 weeks old. It was advised that her social worker could refer her but she did not want them to think she could not cope.

Although she will have to claim benefits and will be entitled to fostering allowance, none of these items were yet in place and it would probably be some weeks before she receives them as her final salary from her employment would be taken into account.

Unfortunately, as the baby was passed to her without essential items, she had to spend her disposable income on necessities for the baby, including a pram, cot, car seat, bedding and nappies, and although she does have the support of her mother, she is carer of her 2 older grandchildren and has recently had her guardianship funding cut.

The woman was invited down to the centre and in the meantime Job Centre Plus were contacted for any support and direction of the way forward. Regrettably they did not have a record of her Universal Credit claim as this would be complicated by the claim for fostering allowance, which had not yet been processed.

When she arrived at the centre, we were able to help with food, nappies, baby wipes and sanitary products for herself, as well as help with fuel costs. Although her prepayment was made via her mobile phone she was able to demonstrate the top up and sent a record of the payment for our accounts.

## **Woodhouse Close Church Community Centre**

### **Annual Report 21-22**

We introduced her to the volunteers in the Thrift Shop whereby, they sourced items she requires to care for the baby. A number of items had been identified such as; a moses basket, changing mat, blankets, sheets, and a bouncy chair, the cost of which was covered by the crisis intervention project funds.

We encouraged her to come back to the thrift shop as and when and if she requires further items for the baby as well as coming back for food and fuel support.

2. DG was referred to us by the local Job Centre in December—they were at a loss as how to help him and hoped that we could. He has a mild learning difficulty and unfortunately he was present when his brother suddenly passed away in the family home. DG and his brother moved to the area from London a couple of years ago following the death of their parents.

A worker was introduced to DG over the telephone and it was explained that assistance would be given with whatever he felt was needed. He disclosed that he had not eaten properly for a couple of days, had no credit on his mobile phone and had no idea what he was supposed to do about funeral arrangements.

That afternoon, we dropped a food parcel off at his home, his gas and electric were topped up as well as a mobile phone top up voucher given. We also provided him with a hot meal from a local takeaway. As this was near Christmas, we had been donated Christmas presents for those facing hardship situations, so we made up a bag of male gifts and took them to him.

The following day we arranged to pick him up and bring him to the community centre, we were then able to contact the hospital and Coroners office to ascertain where his brother was, and then contacted the Registry Office to obtain the death certificate (which we paid for). Local funeral directors were contacted for support and we then began the process of applying for the funeral expenses payment through the government and then arranged the funeral. Unfortunately, DG had no money or savings, therefore a cremation took place where he was not allowed to attend. At the community centre we offered emotional support through our Bereavement Support group and offered to hold a private memorial service at the Church if he would like.

One of the crisis workers kept in touch over the Christmas holidays and also dropped off a Christmas lunch for him.

We have kept in touch with DG, offering support as and when he requires. He has asked if we could assist him in moving house to somewhere more central and affordable and if a worker would accompany him to GP appointments, of which we have said of course we can.

We are now in the process of working together to complete all the relevant applications to apply for social housing.

## **Woodhouse Close Church Community Centre**

### **Annual Report 21-22**

**3.** A woman came to the community centre to ask if we could help her to find a new home for her and her family. She disclosed she had been suffering terrible anti-social behaviour from her next door neighbours, which was having an impact on her mental health and resulted in her relapse back into drug addiction.

A meeting was arranged between her, the current landlord, the local councillor/local MP's assistant and a crisis worker from the community centre. It was organised for the neighbourhood warden and Police to do extra patrols in the area.

We helped complete forms for both Believe Housing and Accent Housing and obtained a copy of her birth certificate from the Registry Office to proceed with the application. Next we helped to apply for her daughters place at Secondary school and liaised with both Primary and Secondary schools to provide a new school uniform.

We also assisted her husband due to him being sanctioned, arranged an interview and spoke to his work coach regarding the family's situation and reinstating Universal Credit.

The woman then referred herself to the Drug and Alcohol Recovery Service and Social Services became involved. A crisis worker from the community centre was asked to be part of the TAF (Team Around the Family) meetings that followed the Social Services referral.

Since then, things have escalated, to further meetings regarding the families welfare. Our crisis worker was invited by the woman and her social worker to take part in an Initial Child Protection Conference, whereby, a report was provided detailing the work and support given to the family by one of our Crisis Intervention worker here at the community centre, listing any further worries or concerns we have.

During the conference, it was decided that the child should be made subject to a protection plan and that the crisis worker will continue to assist with her housing application in order to provide a safer home for the child. A follow up core group meeting has been arranged.

# **Woodhouse Close Church Community Centre**

## **Accounts**

**For the Year Ending**

**31 March 2022**



**Charity Number 1148458**



# **Woodhouse Close Church Community Centre**

## **Accounts**

**Year Ending 31 March 2021**

<b>Contents</b>	<b>Page</b>
Reference and Administrative Details	<b>2</b>
Structure, Governance and Management	<b>3</b>
Financial Review	<b>4</b>
Independent Examiner's report to the trustees	<b>5</b>
Receipts and payments accounts	<b>6</b>
Statement of assets and liabilities	<b>7</b>
Community Centre accounts	<b>8</b>
Lunch Club accounts	<b>11</b>
Summary of Funds	<b>12</b>

# **Woodhouse Close Church Community Centre**

## **Accounts**

**Year Ending 31 March 2022**

### **Reference and Administrative Details**

**Registered charity name** Woodhouse Close Church Community Centre

**Charity registration number** 1148458

**Principal office** Woodhouse Close Church  
Proudfoot Drive  
Bishop Auckland  
DL14 6PD

### **The Trustees**

The trustees who served the charity during the year were as follows:

John Lethbridge (Chair)  
David Payne (Vice Chair)  
Heather Graber (Treasurer)  
Mr Malcolm Aspinall  
Mr Peter Hall  
Mrs Monica Fleming  
Ms Jane Crawford  
Mr David Fleming (deceased)

**Secretary** Mrs Jane Armstrong M.B.E.

**Independent Examiner** Jane Ascroft  
Jane Ascroft Accountancy Ltd  
Enterprise House  
Harmire Enterprise Park  
Barnard Castle  
County Durham  
DL12 8XT

# **Woodhouse Close Church Community Centre**

## **Trustees' Annual Report**

**Year Ending 31 March 2022**

### **Bankers**

Barclays Bank plc  
Jenkins House  
Bob Hardisty Drive  
Bishop Auckland  
Co Durham  
DL14 7TH

### **Structure, Governance and Management**

We are an unincorporated association. The governing document is the constitution which was adopted on 17 May 2006 (updated 2012). The Centre was registered as a charity on 7 August 2012, registered charity number 1148458.

Elected members of the Management Committee are responsible for formally monitoring and reviewing progress and making decisions on major policy changes and new initiatives. The Management Committee has nine full members and meets six times a year.

The list of trustees will be updated at the AGM on 5<sup>th</sup> July 2022. Subject to agreement, the elected members of the Management Committee will effectively become the trustees of the Management Committee.

Together with seven part-time workers and a full time Church Centre Manager, 45 volunteers carry out the day-to-day tasks of the Centre's projects and functions which include: Crisis Intervention; Lunch Club / Day Club / Meals on Wheels; Thrift Shop; and office administration. Operational responsibilities for the centre's day-to-day running rest with the Church Centre Manager, under the supervision of the Management Committee. The line management responsibility for part-time staff rests with the Church Centre Manager although the Cleaner/Caretaker is managed by the Church Centre Manager on behalf of the Church. The Church Centre Manager is managed by the Chair of the Management Committee

### **Public Benefit**

Our main activities and who we help are described elsewhere in this report. All our charitable activities are undertaken to further our charitable purposes for the public benefit. The Management Committee have had regard to the Charity Commission's guidance on public benefit throughout the year when deciding on the activities of the charity.

# **Woodhouse Close Church Community Centre**

## **Trustees' Annual Report**

### **Year Ending 31 March 2022**

#### **Financial Review**

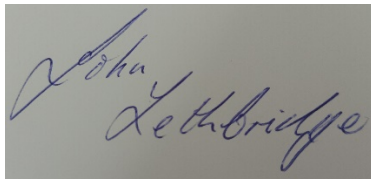
Total income for the year was £155,506 (2021 - £173,035) and total expenditure was £120,275 (2021 - £133,334) giving an overall surplus of £35,231 (2021 - £39,701).

At 31st March 2022 the charity held total bank balances of £188,803 (2021 - £152,802).

#### **Reserves Policy**

The charity aims to hold between 3 and 6 months' centre running costs in reserve. At 31<sup>st</sup> March 2022 this was estimated to be between £4,000 and £8,000 excluding staff costs and between £10,000 and £20,000 including the wage of the Centre Co-ordinator. At 31<sup>st</sup> March 2022 actual centre reserves were £7,205.

Signed by order of the trustees

A handwritten signature in blue ink, reading 'John Lethbridge', is shown on a light-colored background.

Mr John Lethbridge  
Chair

Date: 5<sup>th</sup> July 2022



# **Woodhouse Close Church Community Centre**

## **Independent Examiner's Report to the Trustees of Woodhouse Close Church Community Centre**

**Year Ending 31 March 2022**

I report on the accounts of the charity for the year ending 31 March 2022 set out on pages 13 to 19.

### **Respective Responsibilities of Trustees and Independent Examiner**

The charity's trustees are responsible for the preparation of the accounts. The charity's trustees consider that an audit is not required for this year under section 144(2) of the Charities Act 2011 (the 2011 Act) and that an independent examination is needed.

It is my responsibility to:

- examine the accounts under section 145 of the 2011 Act;
- to follow the procedures laid down in the General Directions given by the Charity Commission under section 145(5)(b) of the 2011 Act; and
- to state whether particular matters have come to my attention.

### **Basis of Independent Examiner's Statement**

My examination was carried out in accordance with the General Directions given by the Charity Commission. An examination includes a review of the accounting records kept by the charity and a comparison of the accounts presented with those records. It also includes consideration of any unusual items or disclosures in the accounts, and seeking explanations from you as trustees concerning any such matters. The procedures undertaken do not provide all the evidence that would be required in an audit, and consequently I do not express an audit opinion on whether the accounts present a 'true and fair view'.

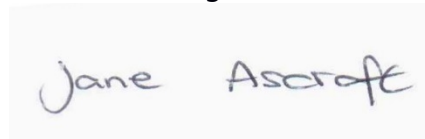
### **Independent Examiner's Statement**

In connection with my examination, no matter has come to my attention:

(1) which gives me reasonable cause to believe that in any material respect the trustees have met the requirements to ensure that:

- proper accounting records are kept in accordance with section 130 of the Act; and
- accounts are prepared which agree with the accounting records and comply with the accounting requirements of the 2011 Act; or

(2) to which, in my opinion, attention should be drawn in order to enable a proper understanding of the accounts to be reached.



Jane Ascroft  
Chartered Accountant  
Independent examiner

Enterprise House  
Harmire Enterprise Park  
Barnard Castle  
County Durham

DL12 8XT

Date: 2022

# Woodhouse Close Church Community Centre

## Receipts and Payments Summary

Year Ending 31 March 2022

	Unrestrict ed Funds (£)	Restricted Funds (£)	TOTAL 2022 (£)	TOTAL 2021 (£)
<b>Receipts</b>				
Community Centre	9,687	132,148	141,835	146,990
Lunch Club	<u>13,671</u>	-	<u>13,671</u>	<u>26,045</u>
	<u>23,358</u>	<u>132,148</u>	<u>155,506</u>	<u>173,035</u>
<b>Payments</b>				
Community Centre	15,282	83,511	98,793	116,420
Lunch Club	<u>21,482</u>	-	<u>21,482</u>	<u>16,914</u>
	<u>36,764</u>	<u>83,511</u>	<u>120,275</u>	<u>133,334</u>
<b>Receipts less payments</b>	<b>(13,406)</b>	<b>48,637</b>	<b>35,231</b>	<b>39,701</b>
Transfers	(120)	120	-	-
Bank and cash balances b/fwd	<u>38,225</u>	<u>114,577</u>	<u>152,802</u>	<u>113,101</u>
<b>Bank and cash balances c/fwd</b>	<u><b>24,699</b></u>	<u><b>163,334</b></u>	<u><b>188,033</b></u>	<u><b>152,802</b></u>

# Woodhouse Close Church Community Centre

## Statement of Assets and Liabilities

## As at 31 March 2022

[illegible]

**7,205**  
13,760  
Designated funds

**17,094**  
24,065  
Restricted funds

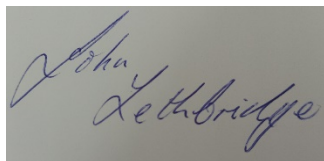
**163,334**  
114,577

=====

**187,633**  
152,402

=====

These accounts were approved by the members of the committee on the 5<sup>th</sup> July 2022 and are signed on their behalf by:

A handwritten signature in blue ink that reads "John Lethbridge". The signature is written in a cursive style with a large initial 'J'.

John Lethbridge  
Chair of the management board of trustees

Date: 5<sup>th</sup> July 2022

# Woodhouse Close Church Community Centre

Year Ending 31 March 2022

## Community Centre Receipts

	Unrestrict ed Funds (£)	Restricted Funds (£)	TOTAL 2022 (£)	TOTAL 2021 (£)
<u>Gifts and Donations</u>				
Gifts and Donations	4,807	30,121	34,928	48,400
Auckland Project donation	-	25,000	25,000	-
Fundraising events	-	<u>6,339</u>	<u>6,339</u>	<u>(2,022)</u>
	<u>4,807</u>	<u>61,460</u>	<u>66,267</u>	<u>46,378</u>
<u>Grants</u>				
Durham C.C. - Crisis grants	-	3,947	3,947	-
Durham C.C. - Covid grant	-	-	-	5,000
Veolia - Toilet grant	-	-	-	22,858
Garfield Weston - Centre Manager	-	-	-	25,000
CAF Online - Crisis grant	-	-	-	6,000
BASH AAP - Co-ordinator	-	10,000	10,000	
BASH AAP - Van	-	16,500	16,500	
Gaunless Gateway	-	-	-	6,500
NEA Project	-	4,170	4,170	
AYCC - Crisis grant	-	5,844	5,844	11,755
Bernard Sunley Foundation - Van	-	5,000	5,000	
Scotto Trust - Day Club	-	7,560	7,560	
Arnold Clark - Day Club	-	1,000	1,000	
Other grants	-	<u>2,381</u>	<u>2,381</u>	<u>2,241</u>
Total grants	-	<u>56,402</u>	<u>56,402</u>	<u>79,354</u>
<u>Other income</u>				
Photocopying and other sales	2,682	6,004	8,686	480
Reimbursements	<u>2,198</u>	<u>8,282</u>	<u>10,480</u>	<u>20,778</u>
	<u>4,880</u>	<u>14,286</u>	<u>19,166</u>	<u>21,258</u>
<b>TOTAL RECEIPTS</b>	<b><u>9,687</u></b>	<b><u>132,148</u></b>	<b><u>141,835</u></b>	<b><u>146,990</u></b>



# Woodhouse Close Church Community Centre

Year Ending 31 March 2022

## Community Centre Payments

	Unrestricted Funds (£)	Restricted Funds (£)	TOTAL 2022 (£)	TOTAL 2021 (£)
<u>Project Costs</u>				
Crisis payments	-	20,862	20,862	11,058
Activities	-	<u>4,955</u>	<u>4,955</u>	<u>1,756</u>
	-	<u>25,817</u>	<u>25,817</u>	<u>12,814</u>
<u>Centre Running Costs</u>				
Office Costs	6,061	2,082	8,143	7,804
Community Co-ordinator	-	12,517	12,517	20,918
Other wages	3,726	37,333	41,059	31,740
Equipment/Capital spend	2,665	941	3,606	34,836
Insurance	764	628	1,392	1,461
Professional fees	360	2,100	2,460	3,618
Sundry costs	<u>1,706</u>	<u>2,093</u>	<u>3,799</u>	<u>3,229</u>
	<u>15,282</u>	<u>57,694</u>	<u>72,976</u>	<u>103,606</u>
<b>TOTAL PAYMENTS</b>	<b><u>15,282</u></b>	<b><u>83,511</u></b>	<b><u>98,793</u></b>	<b><u>116,420</u></b>
<b>Receipts less payments</b>	<b>(5,595)</b>	<b>48,637</b>	<b>43,042</b>	<b>30,570</b>
<b>Transfers</b>	<b>(960)</b>	<b>120</b>	<b>(840)</b>	<b>(5,210)</b>
<b>Bank balances b/fwd</b>	<b><u>14,160</u></b>	<b><u>114,577</u></b>	<b><u>128,737</u></b>	<b><u>103,377</u></b>
<b>Bank balances c/fwd</b>	<b><u>7,605</u></b>	<b><u>163,334</u></b>	<b><u>170,939</u></b>	<b><u>128,737</u></b>

# Woodhouse Close Church Community Centre

Year Ending 31 March 2022

## Lunch Club

	Unrestricted Funds (£)	Restricted Funds (£)	TOTAL 2022 (£)	TOTAL 2021 (£)
<u>Receipts</u>				
Meals, transport & activities	10,587	-	10,587	4,971
Awards For All	-	-	-	10,000
William Leech Charity	-	-	-	2,000
Scotto Trust	-	-	-	4,000
Other income	<u>3,084</u>	-	<u>3,084</u>	<u>5,074</u>
	<u>13,671</u>	-	<u>13,671</u>	<u>26,045</u>
<u>Payments</u>				
Food	1,927	-	1,927	618
Transport	142	-	142	261
Rent	1,300	-	1,300	500
Wages & salaries	16,378	-	16,378	14,617
Volunteer expenses	1,119	-	1,119	596
Other costs	<u>616</u>	-	<u>616</u>	<u>322</u>
	<u>21,482</u>	-	<u>21,482</u>	<u>16,914</u>
Receipts less payments	(7,811)	-	(7,811)	9,131
Transfers	(960)	-	(960)	(240)
Cash & Bank b/fwd	<u>18,615</u>	-	<u>18,615</u>	<u>9,724</u>
Cash & Bank c/fwd	<u>9,844</u>	-	<u>9,844</u>	<u>18,615</u>

# Woodhouse Close Church Community Centre

Year Ending 31 March 2022

## Summary of Funds

	B/fwd at 1/4/21	Receipt s	Payment s	Transfers	C/fwd at 31/3/22
<b><u>Restricted Funds</u></b>					
Building Extension	-	25,000	-	-	25,000
Community Co-ordinator	40,425	11,465	(12,517)	-	39,373
Church funds	2,098	9,144	(7,662)	-	3,580
Community Fund - Crisis	8,234	12,250	(10,931)	-	9,553
Crisis Funds	32,050	32,023	(30,777)	(960)	32,336
Crisis Worker	20,404	-	(9,052)	-	11,352
Day Club	2,334	13,978	(9,042)	-	7,270
Van	8,270	21,844	(1,384)	1,080	29,810
WASH	762	168	(799)	-	131
Other funds	-	<u>6,276</u>	<u>(1,347)</u>	-	<u>4,929</u>
<b>Total Restricted Funds</b>	<b>114,577</b>	<b>132,148</b>	<b>(83,511)</b>	<b>120</b>	<b>163,334</b>
<b>Unrestricted Funds</b>	<b><u>14,160</u></b>	<b><u>9,687</u></b>	<b><u>(15,282)</u></b>	<b><u>(960)</u></b>	<b><u>7,605</u></b>
<b>Total Centre Funds</b>	<b>128,737</b>	<b>141,835</b>	<b>(98,793)</b>	<b>(840)</b>	<b>170,939</b>
<b><u>Designated Funds</u></b>					
Redundancy costs	5,450	-	-	1,800	7,250
Lunch Club	<u>18,615</u>	<u>13,671</u>	<u>(21,482)</u>	<u>(960)</u>	<u>9,844</u>
<b>Total Designated Funds</b>	<b><u>24,065</u></b>	<b><u>13,671</u></b>	<b><u>(21,482)</u></b>	<b><u>840</u></b>	<b><u>17,094</u></b>
<b>Total Charity Funds</b>	<b><u>152,802</u></b>	<b><u>155,506</u></b>	<b><u>(120,275)</u></b>	<b><u>-</u></b>	<b><u>188,033</u></b>

# **Woodhouse Close Church Community Centre**

## **Accounts**

**For the Year Ending**

**31 March 2022**



**Charity Number 1148458**

# **Woodhouse Close Church Community Centre**

## **Accounts**

**Year Ending 31 March 2021**

<b>Contents</b>	<b>Page</b>
Reference and Administrative Details	<b>2</b>
Structure, Governance and Management	<b>3</b>
Financial Review	<b>4</b>
Independent Examiner's report to the trustees	<b>5</b>
Receipts and payments accounts	<b>6</b>
Statement of assets and liabilities	<b>7</b>
Community Centre accounts	<b>8</b>
Lunch Club accounts	<b>11</b>
Summary of Funds	<b>12</b>

# **Woodhouse Close Church Community Centre**

## **Accounts**

**Year Ending 31 March 2022**

### **Reference and Administrative Details**

**Registered charity name** Woodhouse Close Church Community Centre

**Charity registration number** 1148458

**Principal office** Woodhouse Close Church  
Proudfoot Drive  
Bishop Auckland  
DL14 6PD

### **The Trustees**

The trustees who served the charity during the year were as follows:

John Lethbridge (Chair)  
David Payne (Vice Chair)  
Heather Graber (Treasurer)  
Mr Malcolm Aspinall  
Mr Peter Hall  
Mrs Monica Fleming  
Ms Jane Crawford  
Mr David Fleming (deceased)

**Secretary** Mrs Jane Armstrong M.B.E.

**Independent Examiner** Jane Ascroft  
Jane Ascroft Accountancy Ltd  
Enterprise House  
Harmire Enterprise Park  
Barnard Castle  
County Durham  
DL12 8XT



# **Woodhouse Close Church Community Centre**

## **Trustees' Annual Report**

**Year Ending 31 March 2022**

### **Bankers**

Barclays Bank plc  
Jenkins House  
Bob Hardisty Drive  
Bishop Auckland  
Co Durham  
DL14 7TH

### **Structure, Governance and Management**

We are an unincorporated association. The governing document is the constitution which was adopted on 17 May 2006 (updated 2012). The Centre was registered as a charity on 7 August 2012, registered charity number 1148458.

Elected members of the Management Committee are responsible for formally monitoring and reviewing progress and making decisions on major policy changes and new initiatives. The Management Committee has nine full members and meets six times a year.

The list of trustees will be updated at the AGM on 5<sup>th</sup> July 2022. Subject to agreement, the elected members of the Management Committee will effectively become the trustees of the Management Committee.

Together with seven part-time workers and a full time Church Centre Manager, 45 volunteers carry out the day-to-day tasks of the Centre's projects and functions which include: Crisis Intervention; Lunch Club / Day Club / Meals on Wheels; Thrift Shop; and office administration. Operational responsibilities for the centre's day-to-day running rest with the Church Centre Manager, under the supervision of the Management Committee. The line management responsibility for part-time staff rests with the Church Centre Manager although the Cleaner/Caretaker is managed by the Church Centre Manager on behalf of the Church. The Church Centre Manager is managed by the Chair of the Management Committee

### **Public Benefit**

Our main activities and who we help are described elsewhere in this report. All our charitable activities are undertaken to further our charitable purposes for the public benefit. The Management Committee have had regard to the Charity Commission's guidance on public benefit throughout the year when deciding on the activities of the charity.

# **Woodhouse Close Church Community Centre**

## **Trustees' Annual Report**

### **Year Ending 31 March 2022**

#### **Financial Review**

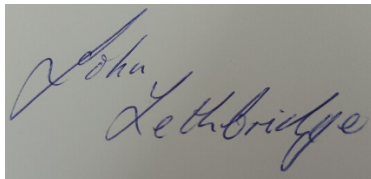
Total income for the year was £155,506 (2021 - £173,035) and total expenditure was £120,275 (2021 - £133,334) giving an overall surplus of £35,231 (2021 - £39,701).

At 31st March 2022 the charity held total bank balances of £188,803 (2021 - £152,802).

#### **Reserves Policy**

The charity aims to hold between 3 and 6 months' centre running costs in reserve. At 31<sup>st</sup> March 2022 this was estimated to be between £4,000 and £8,000 excluding staff costs and between £10,000 and £20,000 including the wage of the Centre Co-ordinator. At 31<sup>st</sup> March 2022 actual centre reserves were £7,205.

Signed by order of the trustees

A handwritten signature in blue ink, reading "John Lethbridge", is shown on a light-colored background.

Mr John Lethbridge  
Chair

Date: 5<sup>th</sup> July 2022

# **Woodhouse Close Church Community Centre**

## **Independent Examiner's Report to the Trustees of Woodhouse Close Church Community Centre**

**Year Ending 31 March 2022**

I report on the accounts of the charity for the year ending 31 March 2022 set out on pages 13 to 19.

### **Respective Responsibilities of Trustees and Independent Examiner**

The charity's trustees are responsible for the preparation of the accounts. The charity's trustees consider that an audit is not required for this year under section 144(2) of the Charities Act 2011 (the 2011 Act) and that an independent examination is needed.

It is my responsibility to:

- examine the accounts under section 145 of the 2011 Act;
- to follow the procedures laid down in the General Directions given by the Charity Commission under section 145(5)(b) of the 2011 Act; and
- to state whether particular matters have come to my attention.

### **Basis of Independent Examiner's Statement**

My examination was carried out in accordance with the General Directions given by the Charity Commission. An examination includes a review of the accounting records kept by the charity and a comparison of the accounts presented with those records. It also includes consideration of any unusual items or disclosures in the accounts, and seeking explanations from you as trustees concerning any such matters. The procedures undertaken do not provide all the evidence that would be required in an audit, and consequently I do not express an audit opinion on whether the accounts present a 'true and fair view'.

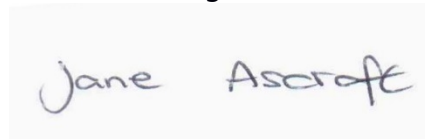
### **Independent Examiner's Statement**

In connection with my examination, no matter has come to my attention:

(1) which gives me reasonable cause to believe that in any material respect the trustees have met the requirements to ensure that:

- proper accounting records are kept in accordance with section 130 of the Act; and
- accounts are prepared which agree with the accounting records and comply with the accounting requirements of the 2011 Act; or

(2) to which, in my opinion, attention should be drawn in order to enable a proper understanding of the accounts to be reached.



Jane Ascroft  
Chartered Accountant  
Independent examiner

Enterprise House  
Harmire Enterprise Park  
Barnard Castle  
County Durham

DL12 8XT

Date: 2022

# Woodhouse Close Church Community Centre

## Receipts and Payments Summary

Year Ending 31 March 2022

	Unrestrict ed Funds (£)	Restricted Funds (£)	TOTAL 2022 (£)	TOTAL 2021 (£)
<b>Receipts</b>				
Community Centre	9,687	132,148	141,835	146,990
Lunch Club	<u>13,671</u>	-	<u>13,671</u>	<u>26,045</u>
	<u>23,358</u>	<u>132,148</u>	<u>155,506</u>	<u>173,035</u>
<b>Payments</b>				
Community Centre	15,282	83,511	98,793	116,420
Lunch Club	<u>21,482</u>	-	<u>21,482</u>	<u>16,914</u>
	<u>36,764</u>	<u>83,511</u>	<u>120,275</u>	<u>133,334</u>
<b>Receipts less payments</b>	<b>(13,406)</b>	<b>48,637</b>	<b>35,231</b>	<b>39,701</b>
Transfers	(120)	120	-	-
Bank and cash balances b/fwd	<u>38,225</u>	<u>114,577</u>	<u>152,802</u>	<u>113,101</u>
<b>Bank and cash balances c/fwd</b>	<b><u>24,699</u></b>	<b><u>163,334</u></b>	<b><u>188,033</u></b>	<b><u>152,802</u></b>

# Woodhouse Close Church Community Centre

## Statement of Assets and Liabilities

As at 31 March 2022

	31 March 2022		31 March
	£	£	2021
			£
<b>Current Assets</b>			
Community Centre current account			
<b>187,684</b>			
<b>152,091</b>			
Petty cash			
<b>349</b>			
<b>711</b>			
			=====
			=====
			<b>188,033</b>
			152,802
<b>Current Liabilities</b>			
Accountancy accrual			
<b>(400)</b>			
(400)			
			=====
			=====
			<b>187,633</b>
152,402			=====
			=====
<b>Net Assets</b>			
Unrestricted funds			



**7,205**  
13,760  
Designated funds

**17,094**  
24,065  
Restricted funds

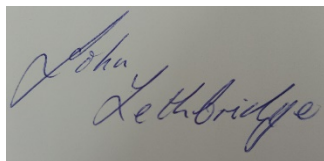
**163,334**  
114,577

=====

**187,633**  
152,402

=====

These accounts were approved by the members of the committee on the 5<sup>th</sup> July 2022 and are signed on their behalf by:

A handwritten signature in blue ink that reads "John Lethbridge". The signature is written in a cursive style with a large initial 'J'.

John Lethbridge  
Chair of the management board of trustees

Date: 5<sup>th</sup> July 2022

# Woodhouse Close Church Community Centre

Year Ending 31 March 2022

## Community Centre Receipts

	Unrestrict ed Funds (£)	Restricted Funds (£)	TOTAL 2022 (£)	TOTAL 2021 (£)
<u>Gifts and Donations</u>				
Gifts and Donations	4,807	30,121	34,928	48,400
Auckland Project donation	-	25,000	25,000	-
Fundraising events	-	<u>6,339</u>	<u>6,339</u>	<u>(2,022)</u>
	<u>4,807</u>	<u>61,460</u>	<u>66,267</u>	<u>46,378</u>
<u>Grants</u>				
Durham C.C. - Crisis grants	-	3,947	3,947	-
Durham C.C. - Covid grant	-	-	-	5,000
Veolia - Toilet grant	-	-	-	22,858
Garfield Weston - Centre Manager	-	-	-	25,000
CAF Online - Crisis grant	-	-	-	6,000
BASH AAP - Co-ordinator	-	10,000	10,000	
BASH AAP - Van	-	16,500	16,500	
Gaunless Gateway	-	-	-	6,500
NEA Project	-	4,170	4,170	
AYCC - Crisis grant	-	5,844	5,844	11,755
Bernard Sunley Foundation - Van	-	5,000	5,000	
Scotto Trust - Day Club	-	7,560	7,560	
Arnold Clark - Day Club	-	1,000	1,000	
Other grants	-	<u>2,381</u>	<u>2,381</u>	<u>2,241</u>
Total grants	-	<u>56,402</u>	<u>56,402</u>	<u>79,354</u>
<u>Other income</u>				
Photocopying and other sales	2,682	6,004	8,686	480
Reimbursements	<u>2,198</u>	<u>8,282</u>	<u>10,480</u>	<u>20,778</u>
	<u>4,880</u>	<u>14,286</u>	<u>19,166</u>	<u>21,258</u>
<b>TOTAL RECEIPTS</b>	<b><u>9,687</u></b>	<b><u>132,148</u></b>	<b><u>141,835</u></b>	<b><u>146,990</u></b>

# Woodhouse Close Church Community Centre

Year Ending 31 March 2022

## Community Centre Payments

	Unrestricted Funds (£)	Restricted Funds (£)	TOTAL 2022 (£)	TOTAL 2021 (£)
<u>Project Costs</u>				
Crisis payments	-	20,862	20,862	11,058
Activities	-	<u>4,955</u>	<u>4,955</u>	<u>1,756</u>
	-	<u>25,817</u>	<u>25,817</u>	<u>12,814</u>
<u>Centre Running Costs</u>				
Office Costs	6,061	2,082	8,143	7,804
Community Co-ordinator	-	12,517	12,517	20,918
Other wages	3,726	37,333	41,059	31,740
Equipment/Capital spend	2,665	941	3,606	34,836
Insurance	764	628	1,392	1,461
Professional fees	360	2,100	2,460	3,618
Sundry costs	<u>1,706</u>	<u>2,093</u>	<u>3,799</u>	<u>3,229</u>
	<u>15,282</u>	<u>57,694</u>	<u>72,976</u>	<u>103,606</u>
<b>TOTAL PAYMENTS</b>	<b><u>15,282</u></b>	<b><u>83,511</u></b>	<b><u>98,793</u></b>	<b><u>116,420</u></b>
<b>Receipts less payments</b>	<b>(5,595)</b>	<b>48,637</b>	<b>43,042</b>	<b>30,570</b>
<b>Transfers</b>	<b>(960)</b>	<b>120</b>	<b>(840)</b>	<b>(5,210)</b>
<b>Bank balances b/fwd</b>	<b><u>14,160</u></b>	<b><u>114,577</u></b>	<b><u>128,737</u></b>	<b><u>103,377</u></b>
<b>Bank balances c/fwd</b>	<b><u>7,605</u></b>	<b><u>163,334</u></b>	<b><u>170,939</u></b>	<b><u>128,737</u></b>

# Woodhouse Close Church Community Centre

Year Ending 31 March 2022

## Lunch Club

	Unrestricted Funds (£)	Restricted Funds (£)	TOTAL 2022 (£)	TOTAL 2021 (£)
<u>Receipts</u>				
Meals, transport & activities	10,587	-	10,587	4,971
Awards For All	-	-	-	10,000
William Leech Charity	-	-	-	2,000
Scotto Trust	-	-	-	4,000
Other income	<u>3,084</u>	-	<u>3,084</u>	<u>5,074</u>
	<u>13,671</u>	-	<u>13,671</u>	<u>26,045</u>
<u>Payments</u>				
Food	1,927	-	1,927	618
Transport	142	-	142	261
Rent	1,300	-	1,300	500
Wages & salaries	16,378	-	16,378	14,617
Volunteer expenses	1,119	-	1,119	596
Other costs	<u>616</u>	-	<u>616</u>	<u>322</u>
	<u>21,482</u>	-	<u>21,482</u>	<u>16,914</u>
Receipts less payments	(7,811)	-	(7,811)	9,131
Transfers	(960)	-	(960)	(240)
Cash & Bank b/fwd	<u>18,615</u>	-	<u>18,615</u>	<u>9,724</u>
Cash & Bank c/fwd	<u>9,844</u>	-	<u>9,844</u>	<u>18,615</u>

# Woodhouse Close Church Community Centre

Year Ending 31 March 2022

## Summary of Funds

	B/fwd at 1/4/21	Receipt s	Payment s	Transfers	C/fwd at 31/3/22
<b><u>Restricted Funds</u></b>					
Building Extension	-	25,000	-	-	25,000
Community Co-ordinator	40,425	11,465	(12,517)	-	39,373
Church funds	2,098	9,144	(7,662)	-	3,580
Community Fund - Crisis	8,234	12,250	(10,931)	-	9,553
Crisis Funds	32,050	32,023	(30,777)	(960)	32,336
Crisis Worker	20,404	-	(9,052)	-	11,352
Day Club	2,334	13,978	(9,042)	-	7,270
Van	8,270	21,844	(1,384)	1,080	29,810
WASH	762	168	(799)	-	131
Other funds	-	<u>6,276</u>	<u>(1,347)</u>	-	<u>4,929</u>
<b>Total Restricted Funds</b>	<b>114,577</b>	<b>132,148</b>	<b>(83,511)</b>	<b>120</b>	<b>163,334</b>
<b>Unrestricted Funds</b>	<b><u>14,160</u></b>	<b><u>9,687</u></b>	<b><u>(15,282)</u></b>	<b><u>(960)</u></b>	<b><u>7,605</u></b>
<b>Total Centre Funds</b>	<b>128,737</b>	<b>141,835</b>	<b>(98,793)</b>	<b>(840)</b>	<b>170,939</b>
<b><u>Designated Funds</u></b>					
Redundancy costs	5,450	-	-	1,800	7,250
Lunch Club	<u>18,615</u>	<u>13,671</u>	<u>(21,482)</u>	<u>(960)</u>	<u>9,844</u>
<b>Total Designated Funds</b>	<b><u>24,065</u></b>	<b><u>13,671</u></b>	<b><u>(21,482)</u></b>	<b><u>840</u></b>	<b><u>17,094</u></b>
<b>Total Charity Funds</b>	<b><u>152,802</u></b>	<b><u>155,506</u></b>	<b><u>(120,275)</u></b>	<b><u>-</u></b>	<b><u>188,033</u></b>