

# Annual Report

1st April 2024 to 31st March 2025

Because  
Childhood  
Can't Wait



## Contents

	Page No.
Chair's Report: Catherine Landau	1
Strategic Lead's Report: Caia Bryant-Griffiths	3
Operational Lead's Report: Vikki Thomas	4
Corporate & Community Development Lead's Report: Sharon Uppal	5
Public Benefit Report	7
A Taste of Home-Start—feedback	8
Objectives for 2025/2026	9
The Home-Start Telford & Wrekin Family	10
Who were our Supporters?	Inside back cover
<b>Contact us</b>	Back cover

### Mission Statement

Home-Start offers support, friendship and practical help to parents with young children in local communities throughout the UK and with British Forces in Germany and Cyprus.

Home-Start offers a unique service. We recruit and train volunteers who are usually parents themselves, to visit families with at least one child under 5, at home, and offer them informal, friendly and confidential support. We also support through groups.

### Introduction

Home-Start Telford & Wrekin has been supporting local families for 36 years this year; we provide a core home-visiting service, self-esteem courses, mental health support drop-ins, young parent support and parent and child groups. The core service of Home-Start is to provide weekly home visits to young families under pressure to give parents the support they need to give their children the best possible start in life. We work with carefully selected, vetted, and trained volunteers who are matched with parents to provide friendship and emotional and practical support. In addition to volunteer and group support we have active social media channels providing information and signposting to other sources of help.

This report was adopted by Trustees on 16th October 2025

Signed: 

Catherine Landau, Chair, on behalf of Trustees

# Chair's Report

For the year ended 31<sup>st</sup> March 2025

## What is resilience?

Resilience is the ability to bounce back or adapt successfully to adversity, trauma, or stress. It's a process of adapting well in the face of difficult situations, and it's not something you're born with, but something that can be developed and strengthened through experiences and relationships. Resilience is the cornerstone of our work at Home Start Telford & Wrekin. This year, as we reflect on the challenges faced and the triumphs achieved, we are united by the shared goal of fostering resilience within our community. Whether among our users, volunteers, trustee board members, staff, or donors, the spirit of resilience has been evident in every interaction and initiative we have undertaken.

## Our Families

For the families and individuals we support, resilience has been a journey of discovery and empowerment. Many have faced difficult circumstances—be it financial, emotional, or social challenges. Through our range of programmes and home-visiting, users have built the strength to navigate adversity and embrace opportunities for growth. For instance, one mother shared how being part of our network gave her the confidence to return to work after long-term unemployment, while others spoke of the sense of connection and hope fostered in their lives. These stories remind us that resilience is not just about surviving but thriving, as both individuals and as parents.

## The Contribution of Volunteers

Our volunteers are the very backbone of Home Start, embodying resilience in every act of service. Their unwavering dedication enabled us to deliver vital ongoing support throughout the year. From mentoring and supporting families within home-visiting, to contributing to organising community and fund raising events, volunteers have demonstrated that resilience often manifests through collective action. One volunteer reflected on how working with families facing hardship strengthened their own understanding of resilience, remarking, "Helping others has taught me the power of persistence and the importance of building connections."

## Our staff

Our amazing staff exemplify resilience: the ability to adapt and even thrive in the face of challenges and adversity. Resilience is not just about bouncing back from difficult situations, but also about growing stronger and more capable as a result. It involves a combination of mental toughness, emotional strength, and a positive outlook, enabling individuals to navigate through obstacles and emerge even more determined and resourceful - as you will see in the coming year!

## Trustee Board Members and Chair's Perspective

As trustees and leaders, resilience has been integral to our strategic decision-making. This year, our board faced the challenge of changing funding landscapes and evolving community needs. Through collaborative efforts and a common vision, we ensured the continuity of our services and the expansion of our outreach. As Chair, I have witnessed the resilience of my fellow trustees, who have met these challenges with creativity and steadfast commitment.



### **The Role of Donors**

Our donors have always played a critical role in building resilience within the organisation. Their support has enabled us to maintain vital programs and offer resources to those in need. Contributions, whether financial or in-kind, have been a testament to the trust and belief in our mission. One donor shared their motivation: “I give to Home Start because I see the impact it has on real lives. Knowing my contribution helps build resilience in families makes it deeply fulfilling.” This generosity has not gone unnoticed, and we are immensely grateful for the direct impact it has had on our ability to deliver services.

### **Conclusion**

Building resilience is a collective endeavour that requires commitment, compassion, and vision. We are proud of the strides we have made this year in empowering users, supporting volunteers, collaborating as trustees, and engaging donors. Each perspective highlights the ways in which resilience transforms lives and strengthens community bonds. As we look to the future, we remain dedicated to fostering resilience in all its forms and continuing our mission of supporting families and individuals in meaningful, impactful ways. I personally thank each and every one of you for all you have, and continue to do.

**Catherine Landau**



## **Strategic Lead's Report**

For the year ended 31st March 2025

Our AGM and annual report this year is focussed on building resilience, which is what Home-Start is all about – our overall aim is to build resilience in children and their parents, and my specific work/aim within the team is to help build organisational resilience. Therefore, with my specific role in mind, I am delighted to report that our on-going resilience is in a good place at the end of the year following recruitment of valuable new team members, a successful National Lottery bid and a stable financial outlook.

The two new team members, Fiona Edwards and Amy Moss, were recruited in April and August last year and have proved invaluable to the team. They both have excellent skills, work well together, and have had some amazing outcomes for families through the excellent work they have done.

The National Lottery bid included funding for a new Community Engagement Co-ordinator. This new role has been developed specifically to reach minority groups and to increase our diversity as well as our volunteer numbers. Recruiting sufficient volunteers to deliver our service has become increasingly challenging in recent years and it is hoped that this new post will address this issue, enable us to support more ethnic minority families and make us more resilient and sustainable.

Our financial resilience is always an on-going challenge and I'm very grateful to Sharon Uppal, our Corporate and Community Development Lead, for her invaluable support in helping us build our resilience by diversifying and increasing our funding streams – particularly for her work in engaging corporate partners and developing sponsorship event funding.

Sharon is also the driving force behind achieving the Kings Award for Voluntary Service and this was a highlight of our year and something which will help us build ongoing resilience as it is a testament to our quality - invaluable when looking for support, be it in recruitment of volunteers or in convincing businesses that we are a reputable organisation to invest in. The award also gave us many opportunities to improve our PR as we were able to celebrate the presentation of the award by The Princess Royal, the celebration we organised for volunteers with a further presentation for them by His Majesty's Lord Lieutenant of Shropshire and an invitation to a Buckingham Palace Garden party – a year of celebrations!

I can't finish my report without mentioning our wider team and the part they all play in making Home-Start Telford & Wrekin the wonderful family support organisation it is – thank you to the rest of our staff team not mentioned above (Naomi, Vikki, Heidi, Elysia and Tash), thank you to all our trustee volunteers for all their support to me and the staff team, thank you to all our family support volunteers for all your hard work and the amazing impact you have.

**Caia Bryant-Griffiths**





## Operational Lead's Report

For the year ended 31st March 2025

Writing my report this year has been a bittersweet moment because, as most of you will know, it will be my last report, as I am retiring at the end of October.

The theme of our annual report and AGM this year is 'Building Resilience'. I am very proud to say that I believe we **have** built resilience into our organisation by recruiting such an amazing trustee, staff and volunteer team, meaning I am confident that Home-Start Telford & Wrekin will continue supporting families in Telford for many years to come.

As Caia has covered, 2024-2025 was an incredible year for our scheme. My personal highs have included attending the Royal Carol Service at Westminster Abbey, welcoming brilliant new staff, Amy & Fee, through to running my regular weekly drop-in group, ME TIME, and working with amazing volunteers and fabulous families.

Much of the work we do at Home-Start is focused on building resilience in families, helping them to develop the capacity to cope with life's ups and downs, and to 'bounce back' from adversity.

Sadly, much as we'd like to, we can't protect our families from adversity. Issues such as poverty, isolation, unstable relationships, developmental or behavioural concerns about the children, poor mental or physical health of the parent or child, poor housing etc will all have an impact on the family's resilience.

However, our wonderful volunteers visit their families each week providing a friendly, listening ear, bespoke emotional and practical support with a passion and dedication that is truly amazing. Through all their hard work, we help our families to weather those storms and sometimes, even learn to dance in the rain!

So, I'd like to say a huge THANK YOU to our outstanding team of volunteers, without them, we would have no Home-Start Telford & Wrekin.

**Vikki Thomas**



## Corporate & Community Development Lead's Report

For the year ended 31st March 2025

Another year has flown by, and while reflecting on what we, as an organisation, have achieved, it is so easy to forget the small wins and the people met along the way. These individuals have signed up for challenge events, hosting quizzes or supporting the Christmas gift wrap. Their dedication and enthusiasm has been the heartbeat of our fundraising success, and I would not have managed without their unwavering support. I hope you know who you are, and, if I haven't said it before, thank you from the bottom of my heart!



To start the year, we had our wonderful Darren and his fellow running partner, Simon, complete the Ironbridge Half Marathon for us. Their determination was remarkable—Simon unfortunately injured himself 5 miles into the run, but soldiered on to the end. They were cheered through the finishing line raising a fantastic £725.



August saw Home-Start's first ever Skydive event at Tilstock Airfield, with 4 amazing and incredibly brave individuals taking part! The day was filled with excitement and anticipation as volunteers, colleagues, family and friends gathered to support Ruth, Helen, Michelle, and Zoe as they jumped out of a plane! Their courage and determination was truly inspiring, and together they raised an impressive £2,681 to support the work we do. It was a day we will never forget!



In September, we had another two runners wave the flag for Home-Start, when Leanne and Dan took part in the Great North Run in Newcastle. Our Trustee (and Dan's mum), Jen, went along to support them, with everyone wearing Home-Start T-shirts to raise our profile. They raised £1,109.



Then came my 2 biggest challenges of the year: the Big Give campaign and Christmas wrap. This was the second year of participating in Big Give, and after a slightly anxious week, I was delighted to see that we had exceeded our target of £10,000 and the final amount raised totalled £14,539.89!

I have to say a huge thank you to volunteers Linda and Natasha, who supported heavily with the Christmas Gift Wrap, giving their time at such a busy time of year, to help wrap presents whilst raising awareness of Home-Start and the work we do.

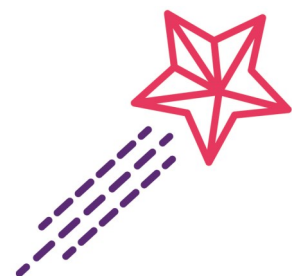


I also need to send special thanks to Lisa O, who organised a very successful quiz evening for us.

In January 2025, I was offered a new position and had to make the tough decision of reducing my hours with Home-Start. This was a challenge itself, not least because it meant passing the running of our Young Parents' group to someone else. Tash and Courtney stepped in and have been doing an amazing job, being there for those young mums who turn up each week for a chat and take part in activities.

I'm extremely fortunate to continue working for Home-Start and see first hand the wonderful work taking place. Thank you so much to all our supporters who help me bring new ideas to fruition and to all our volunteers, without whom we would not be able to make the difference to families lives that we do.

**Sharon Uppal**







## Public Benefit Report

For the year ended 31st March 2025

The following is a report illustrating how our work this year has related to our governing objectives:

The objects for which Home-Start is established are:

To safeguard, protect and preserve the good health, both mental and physical of children and parents of children.

*In order to meet this object all volunteers and staff are vetted and comprehensively trained. Safeguarding training is refreshed annually. Volunteers are carefully matched, supported and supervised. Families are supported with a range of issues and our work is aimed at promoting wellbeing – both mental and physical. Newly referred families receive telephone/online support in the interim between referral and the placement of a home-visiting volunteer, ensuring families are supported from the outset. Our National Lottery funded Parents Matter project supports families with issues of isolation, mental and physical health problems and domestic abuse. Home support visits are supplemented by ‘Me Time’ groups, where parents experiencing low mood/mental health issues can meet and talk. The format for these groups includes exercises to improve mental health and self esteem, and talks by relevant professionals. Our Children in Need and Family Hubs funded Teenage Parents’ project delivers well-being support to children and young people experiencing teenage parenthood. Activities aim to improve confidence, reduce isolation and improve relationships. A Family Hubs funded 0-1s group supports parents with a pregnancy and/or child up to the age of 1 year. Family Hubs also funded our Dads project which aimed to reduce isolation amongst fathers—support included a monthly meet at a soft play centre and WhatsApp support. Chatterbox and Playing Together groups held at Hadley Learning Community, aim to improve social interaction of both parents and children, with activities including crafts, song time and healthy snacks. We also deliver Something More Self Esteem Courses for vulnerable women.*

To prevent cruelty to or maltreatment of children.

*As above plus we maintain effective working relationships with other professionals in the sector. We attend safeguarding and family support meetings. The designated Trustee Board member and the staff Operational Lead both complete Designated Safeguarding Lead Level 3 training.*

To relieve sickness, poverty and need amongst children and parents of children.

*We signpost and accompany families to access specialist financial advice plus we help them think about ways to maximise their income, including introduction to community grocery stores and cooking on a budget. We access grants for items such as fridges and cookers and regularly make referrals to local food banks. Donations of food hampers, and items such as shoes and slow cookers are distributed to those most in need. Families are supported with medical issues and appointments, and a healthy lifestyle is encouraged.*

To promote the education of the public in better standards of child care within the area of Telford & Wrekin and its environs.

*The needs of the child are paramount throughout Home-Start’s work.*

*Our volunteer preparation courses include content on ‘Meeting the Needs of Children’. All staff and volunteers agree to model and encourage positive interaction with children. All groups and courses aim to offer support and information to enhance parents’ skills in raising their children.*

## A Taste of Home-Start Support

### Family 1549:

Family support feedback:

*"When homestart first worked with me up until now, it has changed my life, I was able to go to group settings and meet other parents which enabled me to socialise, do crafts and have open discussions. I had 2 volunteers support me for a short period of time, they were really nice and helpful and helped my house feel more like a home with practical support, the other volunteer we spent time doing playful things as a family. I would recommend homestart to other families, I think it would be really helpful for them, I didn't feel judged. I also got to go on a family day out which was great for me and my little one."*

### 0-1s Baby Group attendee:

*"I have found this group so useful to connect with other mums and Fee is so friendly and makes me feel comfortable to open up. I can't express enough how much I have needed baby groups whilst on maternity leave, they have been crucial for my mental health. And the Monday group is lovely as the venue and toys are good and I love when Fee gets people in to do different things. This is such a great group my baby loves interacting with other babies there. Keep up the good work!"*

### Referrer feedback

Perinatal Community Mental Health Nurse—February 2025:

*"All I can say is that I am not sure Perinatal services would know what to do without the help and support from Homestart with some of our very socially complex ladies. I have had 2 ladies in about 1 year come under your support and they have needed 1:1 support with housing issues, childcare issues, general day to day support. Also support for them to help refer into other services. The knowledge from the family workers who work for home start are incredible, and an invaluable asset to supporting families."*

### Family 1570:

Wonderland Trip feedback, Spring 2025:

*"my 3-year-old has been asking to go to Wonderland for ages but we couldn't afford it. I told him that you need a "magic ticket "to get in. This morning, I woke him up by saying "mate, we've got some magic tickets! We can go to Wonderland!!"*

By the time the family arrived, the little boy was positively shaking with excitement. He spent the whole day grinning from ear to ear! He even managed to persuade 'Goldilocks' to let him have one more go on each of the rides after everyone else had left.



## Objectives for 2025/2026

Develop further corporate relationships  
and continue to diversify funding

Recruit more volunteers to  
enable us to support more  
families

Increase the diversity of volunteers and  
supported families

Progress our EEDI  
plan

Access continuation funding for  
grants finishing within the year

Recruit a Marketing & Communications Champion

Recruit to replace Caia and  
Vikki when they retire

Progress our new five year  
strategic plan

# The Home-Start Telford & Wrekin Family

For the year ended 31st March 2025

## Home-Start UK

for legal guidance, quality resources, training, policies, Quality Assurance etc

## Home-Start families

(home-visited, Me Time group, Teenage Parent group, Dads project, 0-1s group Wellington, Chatterbox and Playing Together groups). Some families access more than one project.

## Volunteers

Alison, Amy M, Amy S, Bernice, Brenda, Brian, Caroline, Claire F, Claire R, Courtney, Deanne, Deb, Donna, Hannah, Jem, Jessica, Jude, June, Katherine, Lianne, Linda, Lisa O, Lisa P, Marg, Michelle H, Michelle P, Natasha G, Nicky, Pat, Paula, Ray, Sandra, Sara, Sarah, Saranjit, Tanya, Tash, Tina, Vicky and Wendy,

## Staff Team

**Caia Bryant-Griffiths**, Strategic Lead  
**Naomi Calabrese**, Charity Administrator  
**Heidi Carter**, Administrator & Project Co-ordinator  
**Tash Crews**, Group Facilitator  
**Fee Edwards**, Family Support Practitioner  
**Amy Moss**, Family Support Practitioner  
**Vikki Thomas**, Operational Lead  
**Sharon Uppal**, Corporate & Community Development Lead

## Management Committee for the 2024-25 year

Kelly Chang, Trustee  
Andrea Cole, Trustee  
Wendy Holton, Trustee  
Lynn Howarth, Trustee  
Cathy Landau, Trustee, Chairperson  
Jen Morris, Trustee  
Linda Sabini, Trustee

## Professional Services

**Chartered Accountant:** Stephanie James  
**Independent Examiner:** Hilary Payne  
**Bankers:** CAF Bank Ltd, 25 Kings Hill Avenue, Kings Hill, West Malling, Kent, ME19 4JQ  
Unity Trust Bank plc, 4 Brindley Place, Birmingham, B1 2JB  
**Insurers:** Zurich Insurance plc, The Zurich Centre, 3000 Parkway, Whiteley, Fareham, Hampshire, PO15 7JZ

Home-Start Telford & Wrekin is a charitable company limited by guarantee which is governed by Memorandum and Articles of Association. A Board of Trustees is responsible for the governance and management of the charity and employ a team of staff to recruit and train a team of volunteers who deliver support to families. New Trustees are recruited to the Board after consideration of an application form, references and Trustee Declaration and are subject to relevant checks. Trustees receive their initial training through an induction process where they meet with the Chairperson and staff and are provided with a range of information regarding the Charity including a full set of Policies and Procedures. All Trustees are offered the opportunity to attend induction training with Home-Start UK as well as on-going opportunities for both in-house and Home-Start UK in-service training.



## Who were our Supporters?

For the year ended 31st March 2025

Sincere thanks to all the organisations and individuals who supported Home-Start Telford & Wrekin in various ways over the past financial year, including Corporate & Community Development Lead, **Sharon Uppal, and our amazing supporters who took part in challenge and fundraising events.** Thanks also go to players of the People's Postcode Lottery.

Asda Foundation  
Jasmeet Aujla  
Deanne Barnes  
Big Give Trust  
Cadent Gas Ltd/Centre for Warmth  
Children in Need  
Christmas Smile  
Dr Julie Dakin  
Roy Evans  
Lady Forester Trust  
HMRC Charities (Gift Aid)  
Ironbridge Lions  
Sarah Jones  
Michelle Le Long  
Lloyds Foundation  
McPhillips  
Meole Brace Golf Club  
Millichope Foundation  
Amy Moss  
National Lottery  
Nisa  
Michelle Pearson  
Pertemps  
Postcode Lottery Community Trust  
Rotary Club of Wellington  
Saputo (Dairy Crest)  
Shrewsbury Unitarian Church  
Shropshire Community Foundation  
Henry Smith Charity  
Telford & Wrekin Council: Councillor's Pride  
Telford & Wrekin Council: Family Hubs  
Turas Accountants  
Waitrose (John Lewis Partnership)  
Mrs Wingfield's Charitable Trust  
Woodward Trust

## **Contact us**

### **Home-Start Telford & Wrekin**

Room 71  
Meeting Point House  
Southwater Square  
Telford  
TF3 4HS

Telephone: 01952 872280

E-mail: [info@homestarttandw.org.uk](mailto:info@homestarttandw.org.uk)

Website: [www.homestarttelfordandwrekin.co.uk](http://www.homestarttelfordandwrekin.co.uk)

Facebook: Home-Start Telford and Wrekin

Twitter: [homestarttw](https://twitter.com/homestarttw)

## **Other useful contact details:**

### **Chief Executive, Home-Start UK**

Clarence House, 46 Humberstone Gate, Leicester, LE1 3PJ

T: 0116 464 5490

E: [info@home-start.org.uk](mailto:info@home-start.org.uk)

### **Charity Commission**

T: 0300 066 9197

W: <https://www.gov.uk/government/organisations/charity-commission>

### **Companies House**

T: 0303 123 4500

E: [enquiries@companieshouse.gov.uk](mailto:enquiries@companieshouse.gov.uk)

### **Home-Start Telford & Wrekin**

Registered Charity Number: 1148269

Company Limited by Guarantee Number: 07004506

**HOME-START TELFORD & WREKIN  
ACCOUNTS  
FOR THE YEAR ENDED 31 MARCH 2025**

## **Treasurer's Report**

*For the year ended 31 March 2025*

The accounts have been prepared in accordance with *Accounting and Reporting by Charities: Statement of Recommended Practice* applicable to charities preparing their accounts in accordance with the Financial Reporting Standard in the UK and Republic of Ireland (Charities SORP FRS 102, October 2019), and with the Companies Act 2006.

The organisation's funds are held in one current and two deposit accounts. A portion of income is designated for specific purposes and/or governed by Service Level Agreements (SLAs) and may carry restrictions on its use.

### **Financial position at the year end:**

Total reserves of the charity have increased by 15.2% from £124,828 to £143,798. Free cash reserves – those available for use across any of the charity's aims – have also increased by approximately 2.4% from £40,986 to £41,956. These reserves are sufficient to cover around six months of unfunded salaries and core costs should no further funding be secured. The 2025–26 budget anticipates a balanced position, with income expected to meet or exceed expenditure without drawing on reserves.

### **Main sources of income in 2024–25 included:**

- The Henry Smith Foundation
- Telford & Wrekin Family Hubs
- National Lottery
- Peoples' Postcode Lottery/Postcode Community Trust

### **Grants and donations of £1,000 or more were also received from:**

- The Big Give Trust
- Children in Need - Teenage Parents
- The Lady Forester Trust
- The Mrs Wingfield Charitable Trust
- HSUK/Cadent
- The Millichope Foundation
- Shropshire Community Foundation/McPhillips
- NISA (Making a Difference Locally)
- The Woodward Trust

### **Fundraising income totalled £4,805 from activities including:**

- Ironbridge Half Marathon
- Great North Run
- Telford & Wrekin Community Lottery
- Other Just Giving fundraising



We are immensely grateful to all our funders and community supporters whose generosity enables us to continue delivering our services across Telford & Wrekin.

**Investment policy and objectives:**

Home-Start Telford & Wrekin receives modest interest income from its bank accounts. The charity does not currently hold other investments. A long-term aim remains to build a sustainable investment fund to generate additional income for the organisation.

**Designated funds/reserves:**

The Trustees continue to hold £84,700 as a designated contingency reserve to cover potential redundancy and pension liabilities, reviewed and recalculated annually.

**Principal risks:**

While the charity remains in a stable financial position, there is continued reliance on a small number of key funders, and many of these funding streams are short-term in nature. Notably, National Lottery and Children in Need funding will conclude in the 2025–26 financial year, and work is ongoing to secure funding for the future.

Trustees regularly monitor financial performance against budget on a bi-monthly basis, alongside an annual review of reserves and the budget. Sub-groups comprising management team members actively monitor organisational needs, risk, and funding strategy.

Sustaining services across the Borough in the long term will require more consistent, guaranteed sources of income.

**Looking ahead:**

With the strategic review (funded by the Lloyds Foundation and Home-Start UK) now complete, the organisation is progressing work on a new 5-year strategy. Continued efforts by the Corporate and Community Development Lead are expanding and diversifying the funding base, and the organisation benefits from growing national partnerships facilitated by Home-Start UK.

We remain deeply thankful to all our partners and funders for their continued support.

**Kelly Chang**

Trustee & Treasurer

# HOME-START TELFORD & WREKIN

## STATEMENT OF FINANCIAL ACTIVITIES FOR THE YEAR ENDED 31 MARCH 2025

	2025 Unrestricted Funds £	2025 Restricted Funds £	2025 Total £	2024 Total £
<b>INCOME:</b>				
Donations and legacies (notes 2.1 & 7.1)	67,216	123,204	190,420	190,580
Investment Income	3,458	-	3,458	2,724
<b>Total Income</b>	<b>70,674</b>	<b>123,204</b>	<b>193,878</b>	<b>193,304</b>
<b>EXPENDITURE:</b>				
Raising Funds (note 3.1)	(1,358)	-	(1,358)	(1,146)
Charitable activities (note 3.2 & 7.1)	(62,643)	(110,907)	(173,550)	(162,148)
<b>Total expenditure</b>	<b>(64,001)</b>	<b>(110,907)</b>	<b>(174,908)</b>	<b>(163,294)</b>
<b>Net income/(expenditure)</b>	<b>6,673</b>	<b>12,297</b>	<b>18,970</b>	<b>30,010</b>
<b>Transfer of funds</b>	<b>-</b>	<b>-</b>	<b>-</b>	<b>-</b>
<b>Total funds brought forward</b>	<b>115,427</b>	<b>9,401</b>	<b>124,828</b>	<b>94,818</b>
<b>Total funds carried forward</b>	<b>122,100</b>	<b>21,698</b>	<b>143,798</b>	<b>124,828</b>

The statement of financial activities includes all gains and losses recognised in the year.  
All income and expenditure derives from continuing activities.

# HOME-START TELFORD & WREKIN

## BALANCE SHEET AS AT 31 MARCH 2025

### Non-current Assets

Equipment (note 4)

### Current Assets

Debtors (note 5)

Cash at bank and in hand

### Total current assets

### Current Liabilities

Creditors (note 6)

### Net assets

### Funds of the charity

Restricted funds (note 7.1)

Unrestricted funds (note 7.2)

### Total funds

2025	2024
£	£
679	1,131
497	3,557
148,618	145,180
149,115	148,737
(5,996)	(25,040)
143,798	124,828
21,698	9,401
122,100	115,427
143,798	124,828

# HOME-START TELFORD WREKIN

## NOTES TO THE ACCOUNTS FOR THE YEAR ENDED 31 MARCH 2025

### Note 1 Accounting Policies

#### 1.1 Basis of preparation

These accounts have been prepared in accordance with Accounting and Reporting by Charities: Statement of Recommended Practice applicable to charities preparing their accounts in accordance with the Financial Reporting Standard in the UK and Republic of Ireland (Charities SORP FRS 102, October 2019 ), and with the Companies Act 2006.

#### 1.2 Preparation of the accounts on a going concern basis

The charity has secured funding for at least the next 12 months. The trustees consider the charity to be a going concern.

#### 1.3 Income

Grant income is recognised when the charity has entitlement to the funds, any performance conditions attached to the grants have been met, it is probable that the income will be received and the amount can be measured reliably.

Donations are included in the year in which they are receivable, which is when the charity becomes entitled to the resource.

#### 1.4 Interest receivable

Interest on funds is included when receivable and the amount can be measured reliably by the charity. This is normally upon notification of the interest paid by the bank.

#### 1.5 Fund accounting

Unrestricted funds are available to spend on activities that further any of the purposes of the charity. Designated funds are unrestricted funds that the trustees have decided at their discretion to set aside for a specific purpose. Restricted funds are solely used for particular areas of the charity's work specified by the donor.

#### 1.6 Funds received as an agent

Funds received by the charity acting as an agent are not recognised as an asset in the accounts because the funds are not within its control. Consequently, the receipt of funds as agent is not recognised as income nor is its distribution recognised as expenditure in the statement of financial activities.

#### 1.7 Expenditure

Expenditure is recognised once there is a legal or constructive obligation to make a payment to a third party, it is probable that settlement will be required and the amount of the obligation can be measured reliably.

#### 1.8 Tangible fixed assets

Costs are capitalised if the asset can be used for more than one year. Tangible fixed assets are initially measured at cost and subsequently measured at cost, net of depreciation and any impairment losses.

Depreciation is recognised to write off the cost of assets less their residual values over their useful lives on the following basis:

Equipment	25% straight line
-----------	-------------------

#### 1.9 Debtors

Prepayments are valued at the amount prepaid

#### 1.10 Cash at bank and in hand

Cash at bank and in hand includes cash and short term highly liquid investment.



# HOME-START TELFORD WREKIN

## NOTES TO THE ACCOUNTS FOR THE YEAR ENDED 31 MARCH 2025

### 1.11 Creditors

Other creditors are recognised where the charity has a present obligation resulting from a past event that will probably result in the transfer of funds to a third party and the amount due to settle the obligation can be measured reliably.

### 1.12 Pensions

Home-Start contributes 5% of employees' salaries into pension schemes of staff.

## Note 2 Income

### 2.1 Analysis of donations and legacies from unrestricted funds

	This year £	Last year £
Grants & Trust Income	56,405	47,935
Donations	5,406	12,986
Fundraising	4,805	12,461
Family Events	600	720
	<u>67,216</u>	<u>74,102</u>

## Note 3 Expenditure

### 3.1 Analysis of expenditure on raising funds

	This year £	Last year £
Fundraising costs	<u>1,358</u>	<u>1,146</u>

### 3.2 Analysis of expenditure on charitable activities

	This year £	Last year £
Staff costs	131,342	122,663
Staff travel expenses	1,999	1,437
Staff away days	160	140
Accounting	4,912	4,777
Volunteers' travel expenses	1,953	1,782
Volunteers' events & gifts	781	137
Management committee expenses	60	-
Courses/training	348	272
Printing, postage & stationery	167	239
Telephone & Internet	814	1,088
Creche	4,684	4,155
Rent and room hire	7,512	8,053
Insurance/data protection	2,024	1,833
Home-Start UK	3,425	1,993
Equipment expensed	506	474
Licences, repairs and servicing	1,937	920
CRM	713	3,284
Depreciation	452	2,059
Family Events	1,369	1,050
Materials	437	616
Refreshments	1,695	1,142
DBS Checks	484	243
Advertising	5,148	2,918
Miscellaneous	628	873
	<u>173,550</u>	<u>162,148</u>

# HOME-START TELFORD WREKIN

## NOTES TO THE ACCOUNTS FOR THE YEAR ENDED 31 MARCH 2025

### 3.3 Trustees expenses

	This year	Last year
Number of trustees who were paid expenses	1	0
Total amount paid for travel expenses	£60	£0

### 3.4 Staff costs

	This year	Last year
	£	£
Gross salaries	123,263	94,619
Employer's national insurance costs	2,743	1,586
Pension costs	5,336	4,084
	<u>131,342</u>	<u>100,289</u>

### 3.5 Average number of employees in the year

	This year	Last year
Charitable activities	8	7

### 3.6 Independent examiner

Payments made for the independent examination of the accounts totalled £200.

## Note 4 Tangible Fixed Assets

### 4.1 Analysis of Tangible Fixed Assets

	Equipment £
<u>Cost</u>	
Balance at 1 April 2024	8,234
Balance at 31 March 2025	<u>8,234</u>
<u>Depreciation</u>	
Balance at 1 April 2024	7,103
Charge for the year	452
Balance at 31 March 2025	<u>7,555</u>
<u>Net Book Value</u>	
Balance at 1 April 2024	1,131
Balance at 31 March 2025	<u>679</u>

## Note 5 Debtors and Prepayments

### 5.1 Analysis of Debtors

	Amounts falling due within 1 year	
	This year	Last year
	£	£
Accrued income	-	3,000
Prepayments	497	557
	<u>497</u>	<u>3,557</u>

**HOME-START TELFORD WREKIN****NOTES TO THE ACCOUNTS FOR THE YEAR ENDED 31 MARCH 2025****Note 6 Creditors and accruals****6.1 Analysis of creditors**

	Amounts falling due within 1 year	
	This year	Last year
	£	£
Accruals	3,127	3,067
Short-term compensated absences (holiday pay)	1,226	1,958
PAYE/NI Liability	1,643	1,696
Deferred income	-	18,319
	<u>5,996</u>	<u>25,040</u>

Deferred income in the previous year relates to funding from The National Lottery and Children In Need.

**Note 7 Funds****Note 7.1 Restricted income funds**

	Balance at 01/04/2024	Income	Expenditure	Transfer from/(to) unrestricted funds	Balance at 31/03/2025
Asda Foundation	-	270	(270)	-	-
Children in Need - Teenage Parents	(1,688)	5,835	(4,147)	-	-
Councillor's Pride	-	500	(500)	-	-
Henry Smith	-	36,700	(36,700)	-	-
HSUK/Cadent	-	4,375	(4,375)	-	-
Ironbridge Half Marathon Fundraising	-	368	(368)	-	-
John Lewis (1)	310	-	(184)	-	126
John Lewis (2)	-	250	(250)	-	-
National Lottery	(2,165)	35,606	(33,441)	-	-
NHS - Smoking Cessation	6,730	-	-	-	6,730
NISA (Making a Difference Locally)	-	500	-	-	500
Shropshire Community Foundation/McPhillips	-	2,800	-	-	2,800
Telford & Wrekin Family Hubs	6,214	36,000	(30,672)	-	11,542
	<u>9,401</u>	<u>123,204</u>	<u>(110,907)</u>	<u>-</u>	<u>21,698</u>

Asda Foundation: Funding towards the costs incurred in delivering a volunteer preparation course.

Children in Need: Teenage Project: To deliver well-being support to children and young people experiencing teenage parenthood in Telford & Wrekin. Activities aim to improve confidence, reduce isolation and improve relationships.

Councillor's Pride: Funding to be used towards volunteer preparation course costs

Henry Smith: Funding to cover core costs, and towards staff hours for a PR/fundraising role. The aim of this role is to diversify funding and improve use of technology and social media in order to strengthen and improve the charity's profile, as well as to raise funding from new sources, making it less reliant on grants.

HSUK/Cadent: Towards the provision of Chatterbox and Playing Together groups, held in term-time at Hadley Learning Community, for parents and pre-school children. The groups encourage social interaction and include craft activities, song time and the provision of healthy snacks.

Ironbridge Half Marathon Fundraising: Raising funds specifically for the annual seaside visit to Rhyl.

John Lewis (1): Provision of £400 worth of John Lewis Partnership vouchers as part of the Healthy, Happy Home initiative.

John Lewis (2) : Funding specifically for food for the Rhyl seaside trip

## HOME-START TELFORD WREKIN

### NOTES TO THE ACCOUNTS FOR THE YEAR ENDED 31 MARCH 2025

The National Lottery: This grant will enable work with more children and families impacted by issues including isolation, mental or physical health problems, and domestic abuse. As well as increasing the number of families worked with through core home-visiting work, the grant will also fund a 'Me Time' group, spread geographically across the Borough. These groups will enable mothers experiencing low mood/mental health issues to meet and talk to others in similar circumstances and enjoy time to themselves while their children are cared for in a creche. The groups will include exercises to improve mental health and self-esteem as well as talks by relevant professionals.

NHS Smoking Cessation: To provide support to mothers who have quit smoking during pregnancy, to remain smoke free after the birth of their child.

NISA (Making a Difference Locally): Funds to be used for emergency items for families

Shropshire Community Foundation/McPhillips: Provision of a Something More self-esteem course for vulnerable women.

Telford & Wrekin Family Hubs: Funding for 3 projects in the 2024-25 financial year: Teenage Parents Me Time – a term-time, weekly meet up for teenage parents, with creche provision for their children. Activities include visiting professionals, soft play and crafting. Dad Squad – initially a term-time, weekly group for dads and pre-school children which has evolved to a monthly meet at a local play centre, accompanied by support provided on WhatsApp. 0-1s Bump to Baby, High Ercall – a term-time weekly meet for parent with a pregnancy or child up to the age of 1 year. Initially held in Wellington, the group now meets in High Ercall.

#### Note 7.2 Designated Funds

£84,700 of the unrestricted funds are designated funds which have been set aside for potential redundancy costs.

#### Note 8 Other information

Home-Start Telford & Wrekin is a private company limited by guarantee and incorporated in England. Its registered office is:

Meeting Point House, Southwater Square, Telford TF3 4HS





**CHARITY COMMISSION**  
FOR ENGLAND AND WALES

## Independent examiner's report on the accounts

### Section A

### Independent Examiner's Report

**Report to the trustees/  
members of**

HOME-START TELFORD & WREKIN

**On accounts for the year  
ended**

31 MARCH 2025

**Charity no  
(if any)**

1148269

**Set out on pages**

I report to the trustees on my examination of the accounts of the above charity ("the Trust") for the year ended 31/03/2025.

**Responsibilities and  
basis of report**

As the charity's trustees, you are responsible for the preparation of the accounts in accordance with the requirements of the Charities Act 2011 ("the Act").

I report in respect of my examination of the Trust's accounts carried out under section 145 of the 2011 Act and in carrying out my examination, I have followed all the applicable Directions given by the Charity Commission under section 145(5)(b) of the Act.

**Independent  
examiner's statement**

I have completed my examination. I confirm that no material matters have come to my attention in connection with the examination which gives me cause to believe that in, any material respect:

- the accounting records were not kept in accordance with section 130 of the Charities Act; or
- the accounts did not accord with the accounting records; or
- the accounts did not comply with the applicable requirements concerning the form and content of accounts set out in the Charities (Accounts and Reports) Regulations 2008 other than any requirement that the accounts give a 'true and fair' view which is not a matter considered as part of an independent examination.

I have no concerns and have come across no other matters in connection with the examination to which attention should be drawn in this report in order to enable a proper understanding of the accounts to be reached.

**Signed:**

*Hilary Payne*

**Date:**

29/08/2025

**Name:**

Hilary Payne

**Relevant professional  
qualification(s) or body  
(if any):**

AAT Level 4

**Address:**

12 Mill Farm Drive, Randlay, Telford TF3 2NA

## Section B

## Disclosure

Only complete if the examiner needs to highlight material matters of concern (see CC32, Independent examination of charity accounts: directions and guidance for examiners).

Give here brief details of any items that the examiner wishes to disclose.

**HOME-START TELFORD & WREKIN  
ACCOUNTS  
FOR THE YEAR ENDED 31 MARCH 2025**

## **Treasurer's Report**

*For the year ended 31 March 2025*

The accounts have been prepared in accordance with *Accounting and Reporting by Charities: Statement of Recommended Practice* applicable to charities preparing their accounts in accordance with the Financial Reporting Standard in the UK and Republic of Ireland (Charities SORP FRS 102, October 2019), and with the Companies Act 2006.

The organisation's funds are held in one current and two deposit accounts. A portion of income is designated for specific purposes and/or governed by Service Level Agreements (SLAs) and may carry restrictions on its use.

### **Financial position at the year end:**

Total reserves of the charity have increased by 15.2% from £124,828 to £143,798. Free cash reserves – those available for use across any of the charity's aims – have also increased by approximately 2.4% from £40,986 to £41,956. These reserves are sufficient to cover around six months of unfunded salaries and core costs should no further funding be secured. The 2025–26 budget anticipates a balanced position, with income expected to meet or exceed expenditure without drawing on reserves.

### **Main sources of income in 2024–25 included:**

- The Henry Smith Foundation
- Telford & Wrekin Family Hubs
- National Lottery
- Peoples' Postcode Lottery/Postcode Community Trust

### **Grants and donations of £1,000 or more were also received from:**

- The Big Give Trust
- Children in Need - Teenage Parents
- The Lady Forester Trust
- The Mrs Wingfield Charitable Trust
- HSUK/Cadent
- The Millichope Foundation
- Shropshire Community Foundation/McPhillips
- NISA (Making a Difference Locally)
- The Woodward Trust

### **Fundraising income totalled £4,805 from activities including:**

- Ironbridge Half Marathon
- Great North Run
- Telford & Wrekin Community Lottery
- Other Just Giving fundraising

We are immensely grateful to all our funders and community supporters whose generosity enables us to continue delivering our services across Telford & Wrekin.

**Investment policy and objectives:**

Home-Start Telford & Wrekin receives modest interest income from its bank accounts. The charity does not currently hold other investments. A long-term aim remains to build a sustainable investment fund to generate additional income for the organisation.

**Designated funds/reserves:**

The Trustees continue to hold £84,700 as a designated contingency reserve to cover potential redundancy and pension liabilities, reviewed and recalculated annually.

**Principal risks:**

While the charity remains in a stable financial position, there is continued reliance on a small number of key funders, and many of these funding streams are short-term in nature. Notably, National Lottery and Children in Need funding will conclude in the 2025–26 financial year, and work is ongoing to secure funding for the future.

Trustees regularly monitor financial performance against budget on a bi-monthly basis, alongside an annual review of reserves and the budget. Sub-groups comprising management team members actively monitor organisational needs, risk, and funding strategy.

Sustaining services across the Borough in the long term will require more consistent, guaranteed sources of income.

**Looking ahead:**

With the strategic review (funded by the Lloyds Foundation and Home-Start UK) now complete, the organisation is progressing work on a new 5-year strategy. Continued efforts by the Corporate and Community Development Lead are expanding and diversifying the funding base, and the organisation benefits from growing national partnerships facilitated by Home-Start UK.

We remain deeply thankful to all our partners and funders for their continued support.

**Kelly Chang**

Trustee & Treasurer

# HOME-START TELFORD & WREKIN

## STATEMENT OF FINANCIAL ACTIVITIES FOR THE YEAR ENDED 31 MARCH 2025

	2025 Unrestricted Funds £	2025 Restricted Funds £	2025 Total £	2024 Total £
<b>INCOME:</b>				
Donations and legacies (notes 2.1 & 7.1)	67,216	123,204	190,420	190,580
Investment Income	3,458	-	3,458	2,724
<b>Total Income</b>	<b>70,674</b>	<b>123,204</b>	<b>193,878</b>	<b>193,304</b>
<b>EXPENDITURE:</b>				
Raising Funds (note 3.1)	(1,358)	-	(1,358)	(1,146)
Charitable activities (note 3.2 & 7.1)	(62,643)	(110,907)	(173,550)	(162,148)
<b>Total expenditure</b>	<b>(64,001)</b>	<b>(110,907)</b>	<b>(174,908)</b>	<b>(163,294)</b>
<b>Net income/(expenditure)</b>	<b>6,673</b>	<b>12,297</b>	<b>18,970</b>	<b>30,010</b>
<b>Transfer of funds</b>	<b>-</b>	<b>-</b>	<b>-</b>	<b>-</b>
<b>Total funds brought forward</b>	<b>115,427</b>	<b>9,401</b>	<b>124,828</b>	<b>94,818</b>
<b>Total funds carried forward</b>	<b>122,100</b>	<b>21,698</b>	<b>143,798</b>	<b>124,828</b>

The statement of financial activities includes all gains and losses recognised in the year.  
All income and expenditure derives from continuing activities.

# HOME-START TELFORD & WREKIN

## BALANCE SHEET AS AT 31 MARCH 2025

### Non-current Assets

Equipment (note 4)

### Current Assets

Debtors (note 5)

Cash at bank and in hand

### Total current assets

### Current Liabilities

Creditors (note 6)

### Net assets

### Funds of the charity

Restricted funds (note 7.1)

Unrestricted funds (note 7.2)

### Total funds

2025	2024
£	£
679	1,131
497	3,557
148,618	145,180
149,115	148,737
(5,996)	(25,040)
143,798	124,828
21,698	9,401
122,100	115,427
143,798	124,828

# HOME-START TELFORD WREKIN

## NOTES TO THE ACCOUNTS FOR THE YEAR ENDED 31 MARCH 2025

### Note 1 Accounting Policies

#### 1.1 Basis of preparation

These accounts have been prepared in accordance with Accounting and Reporting by Charities: Statement of Recommended Practice applicable to charities preparing their accounts in accordance with the Financial Reporting Standard in the UK and Republic of Ireland (Charities SORP FRS 102, October 2019 ), and with the Companies Act 2006.

#### 1.2 Preparation of the accounts on a going concern basis

The charity has secured funding for at least the next 12 months. The trustees consider the charity to be a going concern.

#### 1.3 Income

Grant income is recognised when the charity has entitlement to the funds, any performance conditions attached to the grants have been met, it is probable that the income will be received and the amount can be measured reliably.

Donations are included in the year in which they are receivable, which is when the charity becomes entitled to the resource.

#### 1.4 Interest receivable

Interest on funds is included when receivable and the amount can be measured reliably by the charity. This is normally upon notification of the interest paid by the bank.

#### 1.5 Fund accounting

Unrestricted funds are available to spend on activities that further any of the purposes of the charity. Designated funds are unrestricted funds that the trustees have decided at their discretion to set aside for a specific purpose. Restricted funds are solely used for particular areas of the charity's work specified by the donor.

#### 1.6 Funds received as an agent

Funds received by the charity acting as an agent are not recognised as an asset in the accounts because the funds are not within its control. Consequently, the receipt of funds as agent is not recognised as income nor is its distribution recognised as expenditure in the statement of financial activities.

#### 1.7 Expenditure

Expenditure is recognised once there is a legal or constructive obligation to make a payment to a third party, it is probable that settlement will be required and the amount of the obligation can be measured reliably.

#### 1.8 Tangible fixed assets

Costs are capitalised if the asset can be used for more than one year. Tangible fixed assets are initially measured at cost and subsequently measured at cost, net of depreciation and any impairment losses.

Depreciation is recognised to write off the cost of assets less their residual values over their useful lives on the following basis:

Equipment	25% straight line
-----------	-------------------

#### 1.9 Debtors

Prepayments are valued at the amount prepaid

#### 1.10 Cash at bank and in hand

Cash at bank and in hand includes cash and short term highly liquid investment.



# HOME-START TELFORD WREKIN

## NOTES TO THE ACCOUNTS FOR THE YEAR ENDED 31 MARCH 2025

### 1.11 Creditors

Other creditors are recognised where the charity has a present obligation resulting from a past event that will probably result in the transfer of funds to a third party and the amount due to settle the obligation can be measured reliably.

### 1.12 Pensions

Home-Start contributes 5% of employees' salaries into pension schemes of staff.

## Note 2 Income

### 2.1 Analysis of donations and legacies from unrestricted funds

	This year £	Last year £
Grants & Trust Income	56,405	47,935
Donations	5,406	12,986
Fundraising	4,805	12,461
Family Events	600	720
	<u>67,216</u>	<u>74,102</u>

## Note 3 Expenditure

### 3.1 Analysis of expenditure on raising funds

	This year £	Last year £
Fundraising costs	<u>1,358</u>	<u>1,146</u>

### 3.2 Analysis of expenditure on charitable activities

	This year £	Last year £
Staff costs	131,342	122,663
Staff travel expenses	1,999	1,437
Staff away days	160	140
Accounting	4,912	4,777
Volunteers' travel expenses	1,953	1,782
Volunteers' events & gifts	781	137
Management committee expenses	60	-
Courses/training	348	272
Printing, postage & stationery	167	239
Telephone & Internet	814	1,088
Creche	4,684	4,155
Rent and room hire	7,512	8,053
Insurance/data protection	2,024	1,833
Home-Start UK	3,425	1,993
Equipment expensed	506	474
Licences, repairs and servicing	1,937	920
CRM	713	3,284
Depreciation	452	2,059
Family Events	1,369	1,050
Materials	437	616
Refreshments	1,695	1,142
DBS Checks	484	243
Advertising	5,148	2,918
Miscellaneous	628	873
	<u>173,550</u>	<u>162,148</u>

# HOME-START TELFORD WREKIN

## NOTES TO THE ACCOUNTS FOR THE YEAR ENDED 31 MARCH 2025

### 3.3 Trustees expenses

	This year	Last year
Number of trustees who were paid expenses	1	0
Total amount paid for travel expenses	£60	£0

### 3.4 Staff costs

	This year	Last year
	£	£
Gross salaries	123,263	94,619
Employer's national insurance costs	2,743	1,586
Pension costs	5,336	4,084
	<u>131,342</u>	<u>100,289</u>

### 3.5 Average number of employees in the year

	This year	Last year
Charitable activities	8	7

### 3.6 Independent examiner

Payments made for the independent examination of the accounts totalled £200.

## Note 4 Tangible Fixed Assets

### 4.1 Analysis of Tangible Fixed Assets

	Equipment £
<u>Cost</u>	
Balance at 1 April 2024	8,234
Balance at 31 March 2025	<u>8,234</u>
<u>Depreciation</u>	
Balance at 1 April 2024	7,103
Charge for the year	452
Balance at 31 March 2025	<u>7,555</u>
<u>Net Book Value</u>	
Balance at 1 April 2024	1,131
Balance at 31 March 2025	<u>679</u>

## Note 5 Debtors and Prepayments

### 5.1 Analysis of Debtors

	Amounts falling due within 1 year	
	This year	Last year
	£	£
Accrued income	-	3,000
Prepayments	497	557
	<u>497</u>	<u>3,557</u>

**HOME-START TELFORD WREKIN****NOTES TO THE ACCOUNTS FOR THE YEAR ENDED 31 MARCH 2025****Note 6 Creditors and accruals****6.1 Analysis of creditors**

	Amounts falling due within 1 year	
	This year	Last year
	£	£
Accruals	3,127	3,067
Short-term compensated absences (holiday pay)	1,226	1,958
PAYE/Ni Liability	1,643	1,696
Deferred income	-	18,319
	<u>5,996</u>	<u>25,040</u>

Deferred income in the previous year relates to funding from The National Lottery and Children In Need.

**Note 7 Funds****Note 7.1 Restricted income funds**

	Balance at 01/04/2024	Income	Expenditure	Transfer from/(to) unrestricted funds	Balance at 31/03/2025
Asda Foundation	-	270	(270)	-	-
Children in Need - Teenage Parents	(1,688)	5,835	(4,147)	-	-
Councillor's Pride	-	500	(500)	-	-
Henry Smith	-	36,700	(36,700)	-	-
HSUK/Cadent	-	4,375	(4,375)	-	-
Ironbridge Half Marathon Fundraising	-	368	(368)	-	-
John Lewis (1)	310	-	(184)	-	126
John Lewis (2)	-	250	(250)	-	-
National Lottery	(2,165)	35,606	(33,441)	-	-
NHS - Smoking Cessation	6,730	-	-	-	6,730
NISA (Making a Difference Locally)	-	500	-	-	500
Shropshire Community Foundation/McPhillips	-	2,800	-	-	2,800
Telford & Wrekin Family Hubs	6,214	36,000	(30,672)	-	11,542
	<u>9,401</u>	<u>123,204</u>	<u>(110,907)</u>	<u>-</u>	<u>21,698</u>

Asda Foundation: Funding towards the costs incurred in delivering a volunteer preparation course.

Children in Need: Teenage Project: To deliver well-being support to children and young people experiencing teenage parenthood in Telford & Wrekin. Activities aim to improve confidence, reduce isolation and improve relationships.

Councillor's Pride: Funding to be used towards volunteer preparation course costs

Henry Smith: Funding to cover core costs, and towards staff hours for a PR/fundraising role. The aim of this role is to diversify funding and improve use of technology and social media in order to strengthen and improve the charity's profile, as well as to raise funding from new sources, making it less reliant on grants.

HSUK/Cadent: Towards the provision of Chatterbox and Playing Together groups, held in term-time at Hadley Learning Community, for parents and pre-school children. The groups encourage social interaction and include craft activities, song time and the provision of healthy snacks.

Ironbridge Half Marathon Fundraising: Raising funds specifically for the annual seaside visit to Rhyl.

John Lewis (1): Provision of £400 worth of John Lewis Partnership vouchers as part of the Healthy, Happy Home initiative.

John Lewis (2) : Funding specifically for food for the Rhyl seaside trip

## HOME-START TELFORD WREKIN

### NOTES TO THE ACCOUNTS FOR THE YEAR ENDED 31 MARCH 2025

The National Lottery: This grant will enable work with more children and families impacted by issues including isolation, mental or physical health problems, and domestic abuse. As well as increasing the number of families worked with through core home-visiting work, the grant will also fund a 'Me Time' group, spread geographically across the Borough. These groups will enable mothers experiencing low mood/mental health issues to meet and talk to others in similar circumstances and enjoy time to themselves while their children are cared for in a creche. The groups will include exercises to improve mental health and self-esteem as well as talks by relevant professionals.

NHS Smoking Cessation: To provide support to mothers who have quit smoking during pregnancy, to remain smoke free after the birth of their child.

NISA (Making a Difference Locally): Funds to be used for emergency items for families

Shropshire Community Foundation/McPhillips: Provision of a Something More self-esteem course for vulnerable women.

Telford & Wrekin Family Hubs: Funding for 3 projects in the 2024-25 financial year: Teenage Parents Me Time – a term-time, weekly meet up for teenage parents, with creche provision for their children. Activities include visiting professionals, soft play and crafting. Dad Squad – initially a term-time, weekly group for dads and pre-school children which has evolved to a monthly meet at a local play centre, accompanied by support provided on WhatsApp. 0-1s Bump to Baby, High Ercall – a term-time weekly meet for parent with a pregnancy or child up to the age of 1 year. Initially held in Wellington, the group now meets in High Ercall.

#### Note 7.2 Designated Funds

£84,700 of the unrestricted funds are designated funds which have been set aside for potential redundancy costs.

#### Note 8 Other information

Home-Start Telford & Wrekin is a private company limited by guarantee and incorporated in England. Its registered office is:

Meeting Point House, Southwater Square, Telford TF3 4HS



**CHARITY COMMISSION**  
FOR ENGLAND AND WALES

## Independent examiner's report on the accounts

### Section A

### Independent Examiner's Report

**Report to the trustees/  
members of**

HOME-START TELFORD & WREKIN

**On accounts for the year  
ended**

31 MARCH 2025

**Charity no  
(if any)**

1148269

**Set out on pages**

I report to the trustees on my examination of the accounts of the above charity ("the Trust") for the year ended 31/03/2025.

**Responsibilities and  
basis of report**

As the charity's trustees, you are responsible for the preparation of the accounts in accordance with the requirements of the Charities Act 2011 ("the Act").

I report in respect of my examination of the Trust's accounts carried out under section 145 of the 2011 Act and in carrying out my examination, I have followed all the applicable Directions given by the Charity Commission under section 145(5)(b) of the Act.

**Independent  
examiner's statement**

I have completed my examination. I confirm that no material matters have come to my attention in connection with the examination which gives me cause to believe that in, any material respect:

- the accounting records were not kept in accordance with section 130 of the Charities Act; or
- the accounts did not accord with the accounting records; or
- the accounts did not comply with the applicable requirements concerning the form and content of accounts set out in the Charities (Accounts and Reports) Regulations 2008 other than any requirement that the accounts give a 'true and fair' view which is not a matter considered as part of an independent examination.

I have no concerns and have come across no other matters in connection with the examination to which attention should be drawn in this report in order to enable a proper understanding of the accounts to be reached.

**Signed:**

*Hilary Payne*

**Date:**

29/08/2025

**Name:**

Hilary Payne

**Relevant professional  
qualification(s) or body  
(if any):**

AAT Level 4

**Address:**

12 Mill Farm Drive, Randlay, Telford TF3 2NA

## Section B

## Disclosure

Only complete if the examiner needs to highlight material matters of concern (see CC32, Independent examination of charity accounts: directions and guidance for examiners).

Give here brief details of any items that the examiner wishes to disclose.